



wwPDB EM Validation Summary Report ⓘ

Nov 29, 2022 – 05:44 AM EST

PDB ID : 7V0K
EMDB ID : EMD-26943
Title : Consensus refinement of human erythrocyte ankyrin-1 complex (Composite map)
Authors : Vallese, F.; Kim, K.; Yen, L.Y.; Johnston, J.D.; Noble, A.J.; Cali, T.; Clarke, O.B.
Deposited on : 2022-05-10
Resolution : 2.40 Å (reported)
Based on initial model : 4YZF

This is a wwPDB EM Validation Summary Report for a publicly released PDB entry.

We welcome your comments at validation@mail.wwpdb.org

A user guide is available at

<https://www.wwpdb.org/validation/2017/EMValidationReportHelp>

with specific help available everywhere you see the ⓘ symbol.

The types of validation reports are described at

<http://www.wwpdb.org/validation/2017/FAQs#types>.

The following versions of software and data (see [references ⓘ](#)) were used in the production of this report:

EMDB validation analysis : 0.0.1.dev43
Mogul : 1.8.5 (274361), CSD as541be (2020)
MolProbity : 4.02b-467
buster-report : 1.1.7 (2018)
Percentile statistics : 20191225.v01 (using entries in the PDB archive December 25th 2019)
MapQ : 1.9.9
Ideal geometry (proteins) : Engh & Huber (2001)
Ideal geometry (DNA, RNA) : Parkinson et al. (1996)
Validation Pipeline (wwPDB-VP) : 2.31.2

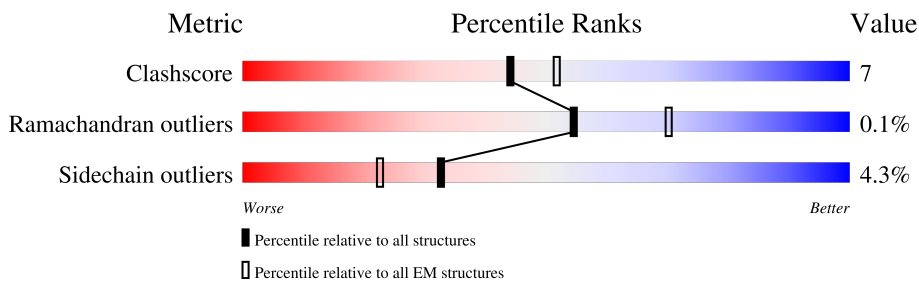
1 Overall quality at a glance i

The following experimental techniques were used to determine the structure:

ELECTRON MICROSCOPY

The reported resolution of this entry is 2.40 Å.

Percentile scores (ranging between 0-100) for global validation metrics of the entry are shown in the following graphic. The table shows the number of entries on which the scores are based.





Metric	Whole archive (#Entries)	EM structures (#Entries)
Clashscore	158937	4297
Ramachandran outliers	154571	4023
Sidechain outliers	154315	3826

The table below summarises the geometric issues observed across the polymeric chains and their fit to the map. The red, orange, yellow and green segments of the bar indicate the fraction of residues that contain outliers for ≥ 3 , 2, 1 and 0 types of geometric quality criteria respectively. A grey segment represents the fraction of residues that are not modelled. The numeric value for each fraction is indicated below the corresponding segment, with a dot representing fractions $\leq 5\%$. The upper red bar (where present) indicates the fraction of residues that have poor fit to the EM map (all-atom inclusion $< 40\%$). The numeric value is given above the bar.

Mol	Chain	Length	Quality of chain
1	K	417	
2	L	409	
2	Q	409	
3	H	1881	
4	O	911	
4	P	911	
4	W	911	
5	X	691	

Continued on next page...

Continued from previous page...

Mol	Chain	Length	Quality of chain
6	D	150	 18% 7% 73%
6	N	150	 7% 21% 5% 73%

2 Entry composition [i](#)

There are 12 unique types of molecules in this entry. The entry contains 32037 atoms, of which 0 are hydrogens and 0 are deuteriums.

In the tables below, the AltConf column contains the number of residues with at least one atom in alternate conformation and the Trace column contains the number of residues modelled with at most 2 atoms.

- Molecule 1 is a protein called Blood group Rh(CE) polypeptide.

Mol	Chain	Residues	Atoms					AltConf	Trace
			Total	C	N	O	S		
1	K	380	2954	1968	477	491	18	3	0

- Molecule 2 is a protein called Ammonium transporter Rh type A.

Mol	Chain	Residues	Atoms					AltConf	Trace
			Total	C	N	O	S		
2	L	388	2938	1928	473	513	24	0	0
2	Q	390	2954	1940	475	515	24	0	0

- Molecule 3 is a protein called Ankyrin-1.

Mol	Chain	Residues	Atoms					AltConf	Trace
			Total	C	N	O	S		
3	H	451	3431	2144	643	632	12	0	0

- Molecule 4 is a protein called Band 3 anion transport protein.

Mol	Chain	Residues	Atoms					AltConf	Trace
			Total	C	N	O	S		
4	W	32	233	142	34	54	3	0	0
4	O	804	6339	4170	1047	1098	24	0	0
4	P	814	6406	4207	1060	1115	24	0	0

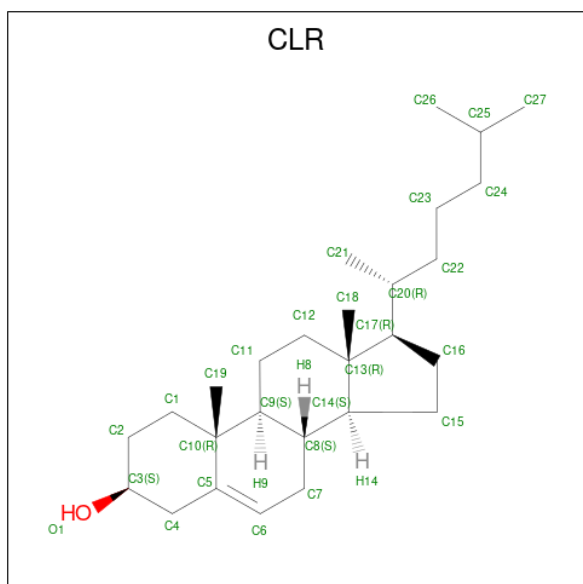
- Molecule 5 is a protein called Protein 4.2.

Mol	Chain	Residues	Atoms					AltConf	Trace
			Total	C	N	O	S		
5	X	658	5174	3282	916	953	23	0	0

- Molecule 6 is a protein called Glycophorin-A.

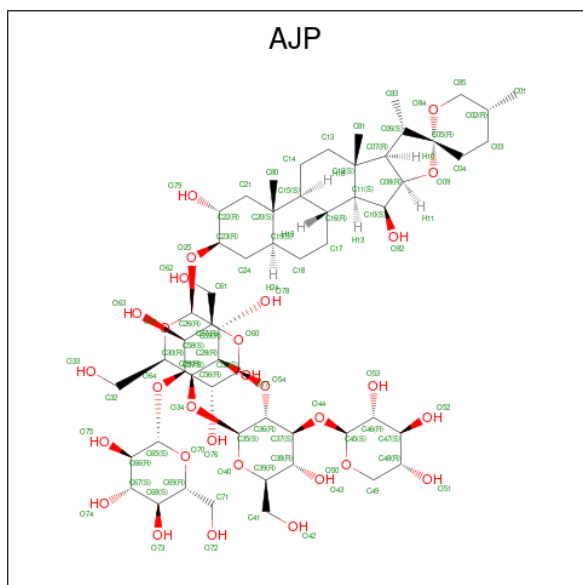
Mol	Chain	Residues	Atoms					AltConf	Trace
			Total	C	N	O	S		
6	N	40	Total	C	N	O	S	0	0
			302	198	51	52	1		
6	D	40	Total	C	N	O	S	0	0
			302	198	51	52	1		

- Molecule 7 is CHOLESTEROL (three-letter code: CLR) (formula: $C_{27}H_{46}O$).



Mol	Chain	Residues	Atoms			AltConf
			Total	C	O	
7	L	1	Total	C	O	0
			56	54	2	
7	L	1	Total	C	O	0
			56	54	2	
7	O	1	Total	C	O	0
			56	54	2	
7	O	1	Total	C	O	0
			56	54	2	
7	P	1	Total	C	O	0
			56	54	2	
7	P	1	Total	C	O	0
			56	54	2	

- Molecule 8 is Digitonin (three-letter code: AJP) (formula: $C_{56}H_{92}O_{29}$).



Mol	Chain	Residues	Atoms			AltConf
8	Q	1	Total	C	O	0
			75	60	15	
8	Q	1	Total	C	O	0
			75	60	15	

- Molecule 9 is 2-acetamido-2-deoxy-beta-D-glucopyranose (three-letter code: NAG) (formula: $C_8H_{15}NO_6$).



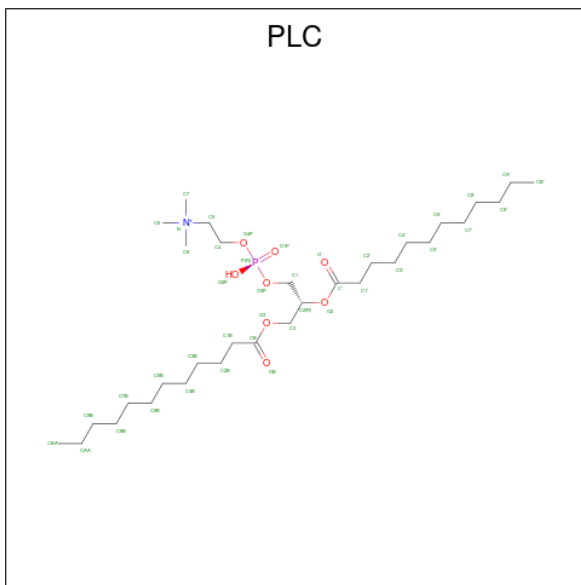
Mol	Chain	Residues	Atoms				AltConf
9	O	1	Total	C	N	O	0
			14	8	1	5	

Continued on next page...

Continued from previous page...

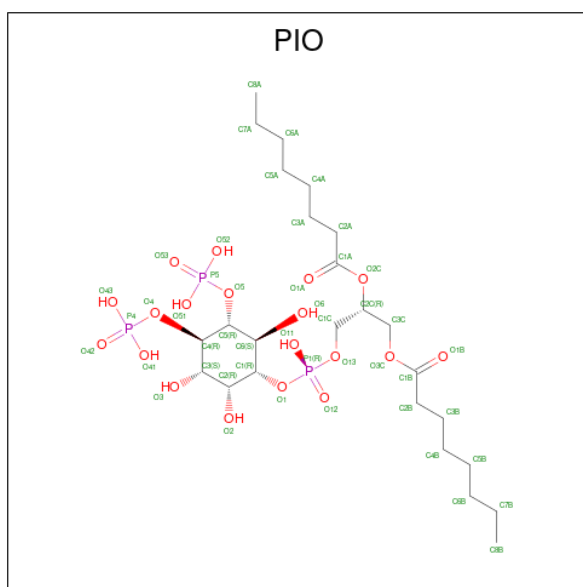
Mol	Chain	Residues	Atoms				AltConf
			Total	C	N	O	
9	P	1	14	8	1	5	0

- Molecule 10 is DIUNDECYL PHOSPHATIDYL CHOLINE (three-letter code: PLC) (formula: $C_{32}H_{65}NO_8P$).



Mol	Chain	Residues	Atoms					AltConf
			Total	C	N	O	P	
10	O	1	42	32	1	8	1	0
10	P	1	42	32	1	8	1	0

- Molecule 11 is [(2R)-2-octanoyloxy-3-[oxidanyl-[(1R,2R,3S,4R,5R,6S)-2,3,6-tris(oxidanyl)-4,5-diphosphonoxy-cyclohexyl]oxy-phosphoryl]oxy-propyl] octanoate (three-letter code: PIO) (formula: $C_{25}H_{49}O_{19}P_3$) (labeled as "Ligand of Interest" by depositor).



Mol	Chain	Residues	Atoms				AltConf
11	P	1	Total	C	O	P	0
			94	50	38	6	
11	P	1	Total	C	O	P	0
			94	50	38	6	

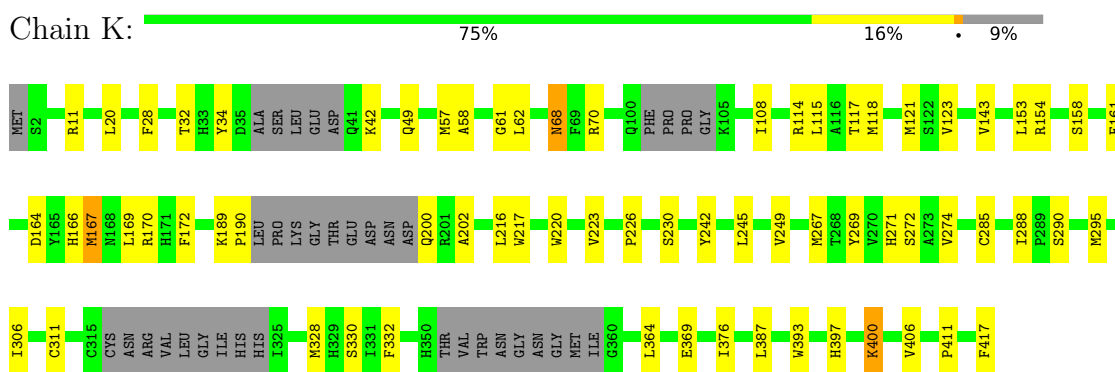
- Molecule 12 is water.

Mol	Chain	Residues	Atoms		AltConf
12	K	54	Total	O	0
			54	54	
12	L	89	Total	O	0
			89	89	
12	Q	80	Total	O	0
			80	80	
12	H	76	Total	O	1
			77	77	
12	W	1	Total	O	0
			1	1	
12	X	190	Total	O	0
			190	190	
12	O	11	Total	O	0
			11	11	
12	P	53	Total	O	0
			53	53	

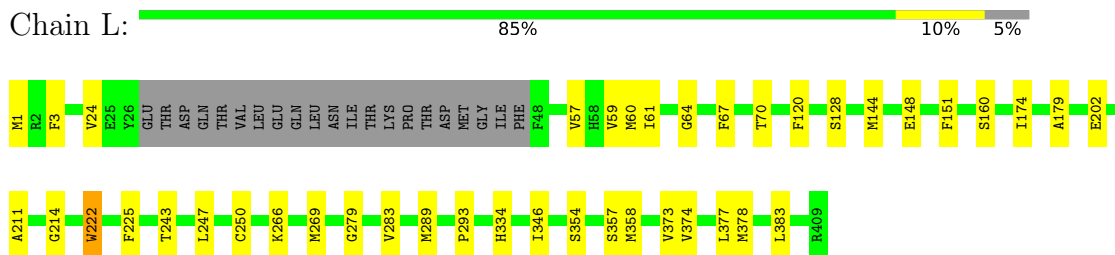
3 Residue-property plots [i](#)

These plots are drawn for all protein, RNA, DNA and oligosaccharide chains in the entry. The first graphic for a chain summarises the proportions of the various outlier classes displayed in the second graphic. The second graphic shows the sequence view annotated by issues in geometry and atom inclusion in map density. Residues are color-coded according to the number of geometric quality criteria for which they contain at least one outlier: green = 0, yellow = 1, orange = 2 and red = 3 or more. A red diamond above a residue indicates a poor fit to the EM map for this residue (all-atom inclusion < 40%). Stretches of 2 or more consecutive residues without any outlier are shown as a green connector. Residues present in the sample, but not in the model, are shown in grey.

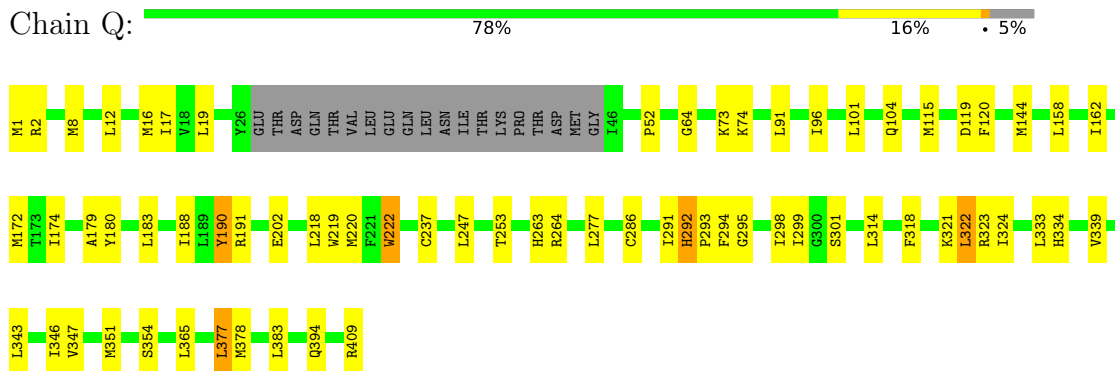
- Molecule 1: Blood group Rh(CE) polypeptide



- Molecule 2: Ammonium transporter Rh type A



- Molecule 2: Ammonium transporter Rh type A



● Molecule 6: Glycophorin-A



MET TYR GLY LYS ILE ILE PHE VAL LEU LEU LEU LEU LEU SER GLU ILE VAL VAL THR ILE SER ALA SER SER THR THR GLY VAL VAL ALA MET HIS THR SER THR SER SER SER VAL THR LYS TYR ILE SER SER GLN THR LYS ASN ASP THR HIS LYS ARG ASP THR TYR ALA ALA PRO ARG HIS

GLU VAL SER GLU ILE SER VAL ARG THR VAL TYR PRO GLU GLU THR G78 E79 F87 S88 E89 P90 E91 E92 T93 L94 V103 I104 I107 L108 L109 I110 I114 R115 R116 L117 ILE LYS LYS SER PRO SER ASP VAL LYS LEU PRO SER ASP THR VAL PRO

LEU SER VAL GLU ILE GLU ASN PRO THR SER ASP GLN

4 Experimental information

Property	Value	Source
EM reconstruction method	SINGLE PARTICLE	Depositor
Imposed symmetry	POINT, C1	Depositor
Number of particles used	710734	Depositor
Resolution determination method	FSC 0.143 CUT-OFF	Depositor
CTF correction method	PHASE FLIPPING AND AMPLITUDE CORRECTION; Patch CTF (cryoSPARC v3) followed by per particle defocus refinement and refinement of higher order aberrations (cryoSPARC v3)	Depositor
Microscope	FEI TITAN KRIOS	Depositor
Voltage (kV)	300	Depositor
Electron dose ($e^-/\text{\AA}^2$)	58	Depositor
Minimum defocus (nm)	500	Depositor
Maximum defocus (nm)	1500	Depositor
Magnification	Not provided	
Image detector	GATAN K3 (6k x 4k)	Depositor
Maximum map value	6.688	Depositor
Minimum map value	-0.119	Depositor
Average map value	0.006	Depositor
Map value standard deviation	0.085	Depositor
Recommended contour level	0.2	Depositor
Map size (Å)	373.5, 373.5, 373.5	wwPDB
Map dimensions	900, 900, 900	wwPDB
Map angles (°)	90.0, 90.0, 90.0	wwPDB
Pixel spacing (Å)	0.415, 0.415, 0.415	Depositor

5 Model quality

5.1 Standard geometry

Bond lengths and bond angles in the following residue types are not validated in this section: AJP, PLC, PIO, NAG, CLR

The Z score for a bond length (or angle) is the number of standard deviations the observed value is removed from the expected value. A bond length (or angle) with $|Z| > 5$ is considered an outlier worth inspection. RMSZ is the root-mean-square of all Z scores of the bond lengths (or angles).

Mol	Chain	Bond lengths		Bond angles	
		RMSZ	# Z >5	RMSZ	# Z >5
1	K	0.27	0/3028	0.50	0/4121
2	L	0.27	0/3008	0.46	0/4075
2	Q	0.36	0/3025	0.50	0/4098
3	H	0.25	0/3490	0.48	0/4740
4	O	0.28	0/6489	0.51	0/8822
4	P	0.27	0/6556	0.51	0/8913
4	W	0.26	0/236	0.57	0/321
5	X	0.28	0/5281	0.53	0/7164
6	D	0.25	0/307	0.60	0/415
6	N	0.25	0/307	0.51	0/415
All	All	0.28	0/31727	0.50	0/43084

There are no bond length outliers.

There are no bond angle outliers.

There are no chirality outliers.

There are no planarity outliers.

5.2 Too-close contacts

In the following table, the Non-H and H(model) columns list the number of non-hydrogen atoms and hydrogen atoms in the chain respectively. The H(added) column lists the number of hydrogen atoms added and optimized by MolProbity. The Clashes column lists the number of clashes within the asymmetric unit, whereas Symm-Clashes lists symmetry-related clashes.

Mol	Chain	Non-H	H(model)	H(added)	Clashes	Symm-Clashes
1	K	2954	0	3064	34	0
2	L	2938	0	2978	24	0
2	Q	2954	0	2989	57	0

Continued on next page...

Continued from previous page...

Mol	Chain	Non-H	H(model)	H(added)	Clashes	Symm-Clashes
3	H	3431	0	3489	24	0
4	O	6339	0	6541	120	0
4	P	6406	0	6572	128	0
4	W	233	0	166	0	0
5	X	5174	0	5183	46	0
6	D	302	0	309	9	0
6	N	302	0	309	5	0
7	L	56	0	92	3	0
7	O	56	0	92	16	0
7	P	56	0	92	14	0
8	Q	75	0	0	7	0
9	O	14	0	13	0	0
9	P	14	0	13	0	0
10	O	42	0	64	3	0
10	P	42	0	64	1	0
11	P	94	0	88	31	0
12	H	77	0	0	0	0
12	K	54	0	0	1	0
12	L	89	0	0	0	0
12	O	11	0	0	0	0
12	P	53	0	0	0	0
12	Q	80	0	0	1	0
12	W	1	0	0	0	0
12	X	190	0	0	1	0
All	All	32037	0	32118	439	0

The all-atom clashscore is defined as the number of clashes found per 1000 atoms (including hydrogen atoms). The all-atom clashscore for this structure is 7.

The worst 5 of 439 close contacts within the same asymmetric unit are listed below, sorted by their clash magnitude.

Atom-1	Atom-2	Interatomic distance (Å)	Clash overlap (Å)
2:Q:190:TYR:HB2	12:Q:649:HOH:O	1.54	1.06
4:P:816:PRO:HG3	7:P:1003:CLR:H151	1.40	1.01
2:Q:318:PHE:O	2:Q:322:LEU:HB2	1.71	0.91
11:P:1006:PIO:H6BA	11:P:1006:PIO:H4A	1.63	0.80
2:Q:318:PHE:HA	2:Q:322:LEU:HB2	1.62	0.80

There are no symmetry-related clashes.

5.3 Torsion angles [i](#)

5.3.1 Protein backbone [i](#)

In the following table, the Percentiles column shows the percent Ramachandran outliers of the chain as a percentile score with respect to all PDB entries followed by that with respect to all EM entries.

The Analysed column shows the number of residues for which the backbone conformation was analysed, and the total number of residues.

Mol	Chain	Analysed	Favoured	Allowed	Outliers	Percentiles	
1	K	371/417 (89%)	366 (99%)	5 (1%)	0	100	100
2	L	384/409 (94%)	380 (99%)	4 (1%)	0	100	100
2	Q	386/409 (94%)	376 (97%)	8 (2%)	2 (0%)	29	41
3	H	449/1881 (24%)	438 (98%)	11 (2%)	0	100	100
4	O	796/911 (87%)	780 (98%)	14 (2%)	2 (0%)	41	55
4	P	804/911 (88%)	790 (98%)	13 (2%)	1 (0%)	51	68
4	W	30/911 (3%)	26 (87%)	4 (13%)	0	100	100
5	X	650/691 (94%)	643 (99%)	7 (1%)	0	100	100
6	D	38/150 (25%)	37 (97%)	1 (3%)	0	100	100
6	N	38/150 (25%)	35 (92%)	3 (8%)	0	100	100
All	All	3946/6840 (58%)	3871 (98%)	70 (2%)	5 (0%)	54	68

All (5) Ramachandran outliers are listed below:

Mol	Chain	Res	Type
2	Q	2	ARG
4	O	83	GLN
2	Q	292	HIS
4	P	597	PHE
4	O	597	PHE

5.3.2 Protein sidechains [i](#)

In the following table, the Percentiles column shows the percent sidechain outliers of the chain as a percentile score with respect to all PDB entries followed by that with respect to all EM entries.

The Analysed column shows the number of residues for which the sidechain conformation was analysed, and the total number of residues.

Mol	Chain	Analysed	Rotameric	Outliers	Percentiles	
1	K	318/348 (91%)	300 (94%)	18 (6%)	20	33
2	L	307/328 (94%)	302 (98%)	5 (2%)	62	79
2	Q	308/328 (94%)	292 (95%)	16 (5%)	23	38
3	H	367/1594 (23%)	353 (96%)	14 (4%)	33	51
4	O	689/786 (88%)	649 (94%)	40 (6%)	20	32
4	P	692/786 (88%)	660 (95%)	32 (5%)	27	43
4	W	20/786 (2%)	20 (100%)	0	100	100
5	X	559/588 (95%)	543 (97%)	16 (3%)	42	62
6	D	31/136 (23%)	29 (94%)	2 (6%)	17	27
6	N	31/136 (23%)	30 (97%)	1 (3%)	39	59
All	All	3322/5816 (57%)	3178 (96%)	144 (4%)	33	46

5 of 144 residues with a non-rotameric sidechain are listed below:

Mol	Chain	Res	Type
4	P	139	PHE
4	P	856	SER
4	P	194	SER
4	P	646	ARG
3	H	421	LYS

Sometimes sidechains can be flipped to improve hydrogen bonding and reduce clashes. All (1) such sidechains are listed below:

Mol	Chain	Res	Type
4	O	819	HIS

5.3.3 RNA [i](#)

There are no RNA molecules in this entry.

5.4 Non-standard residues in protein, DNA, RNA chains [i](#)

There are no non-standard protein/DNA/RNA residues in this entry.

5.5 Carbohydrates [i](#)

There are no monosaccharides in this entry.

5.6 Ligand geometry

14 ligands are modelled in this entry.

In the following table, the Counts columns list the number of bonds (or angles) for which Mogul statistics could be retrieved, the number of bonds (or angles) that are observed in the model and the number of bonds (or angles) that are defined in the Chemical Component Dictionary. The Link column lists molecule types, if any, to which the group is linked. The Z score for a bond length (or angle) is the number of standard deviations the observed value is removed from the expected value. A bond length (or angle) with $|Z| > 2$ is considered an outlier worth inspection. RMSZ is the root-mean-square of all Z scores of the bond lengths (or angles).

Mol	Type	Chain	Res	Link	Bond lengths			Bond angles		
					Counts	RMSZ	# Z > 2	Counts	RMSZ	# Z > 2
8	AJP	Q	501	-	37,37,95	0.48	0	58,62,149	0.59	1 (1%)
9	NAG	O	1002	4	14,14,15	0.43	0	17,19,21	0.64	0
9	NAG	P	1002	4	14,14,15	0.25	0	17,19,21	0.39	0
7	CLR	P	1003	-	31,31,31	0.31	0	48,48,48	0.43	0
7	CLR	P	1001	-	31,31,31	0.39	0	48,48,48	0.53	0
10	PLC	O	1004	-	41,41,41	0.51	0	47,49,49	0.51	0
11	PIO	P	1006	-	47,47,47	0.47	0	61,65,65	0.43	0
7	CLR	L	502	-	31,31,31	0.43	0	48,48,48	0.82	1 (2%)
8	AJP	Q	502	-	49,49,95	0.40	0	74,80,149	0.38	0
7	CLR	L	501	-	31,31,31	0.39	0	48,48,48	0.65	0
7	CLR	O	1001	-	31,31,31	0.38	0	48,48,48	0.68	0
11	PIO	P	1005	-	47,47,47	0.46	0	61,65,65	0.43	0
7	CLR	O	1003	-	31,31,31	0.30	0	48,48,48	0.40	0
10	PLC	P	1004	-	41,41,41	0.51	0	47,49,49	0.51	0

In the following table, the Chirals column lists the number of chiral outliers, the number of chiral centers analysed, the number of these observed in the model and the number defined in the Chemical Component Dictionary. Similar counts are reported in the Torsion and Rings columns. '-' means no outliers of that kind were identified.

Mol	Type	Chain	Res	Link	Chirals	Torsions	Rings
9	NAG	O	1002	4	-	2/6/23/26	0/1/1/1
8	AJP	Q	501	-	-	-	0/6/6/11
9	NAG	P	1002	4	-	0/6/23/26	0/1/1/1
7	CLR	P	1003	-	-	9/10/68/68	0/4/4/4
7	CLR	P	1001	-	-	8/10/68/68	0/4/4/4
10	PLC	O	1004	-	-	17/45/45/45	-
11	PIO	P	1006	-	-	19/44/68/68	0/1/1/1
7	CLR	L	502	-	-	2/10/68/68	0/4/4/4
8	AJP	Q	502	-	-	2/6/121/220	0/7/7/11

Continued on next page...

Continued from previous page...

Mol	Type	Chain	Res	Link	Chirals	Torsions	Rings
7	CLR	L	501	-	-	6/10/68/68	0/4/4/4
7	CLR	O	1001	-	-	8/10/68/68	0/4/4/4
11	PIO	P	1005	-	-	27/44/68/68	0/1/1/1
7	CLR	O	1003	-	-	8/10/68/68	0/4/4/4
10	PLC	P	1004	-	-	20/45/45/45	-

There are no bond length outliers.

All (2) bond angle outliers are listed below:

Mol	Chain	Res	Type	Atoms	Z	Observed(°)	Ideal(°)
7	L	502	CLR	C16-C15-C14	-2.98	99.23	105.13
8	Q	501	AJP	C19-C24-C23	-2.61	111.58	114.46

There are no chirality outliers.

5 of 128 torsion outliers are listed below:

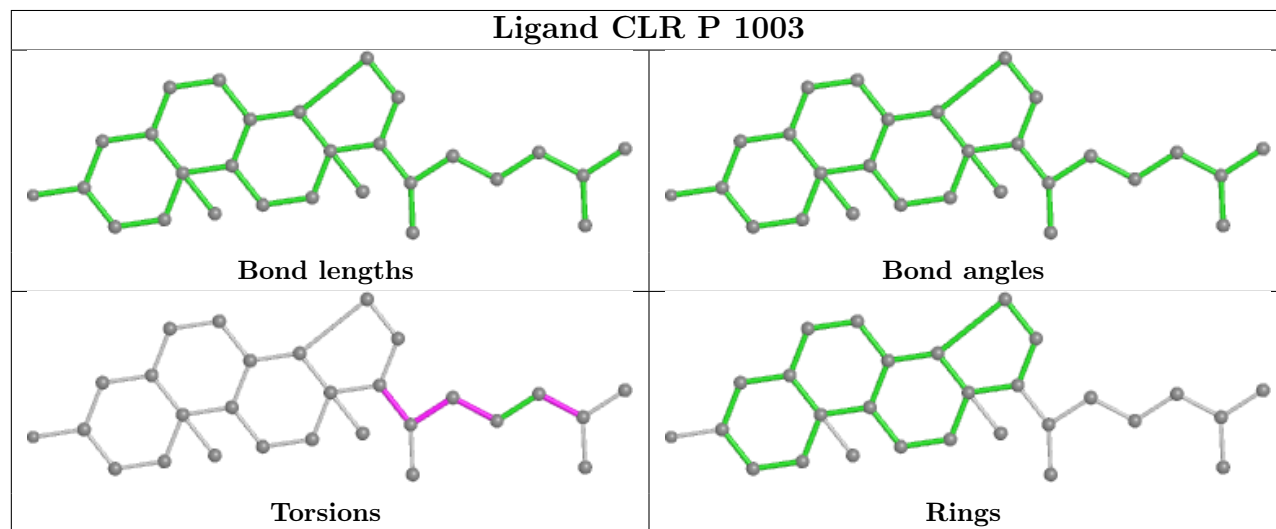
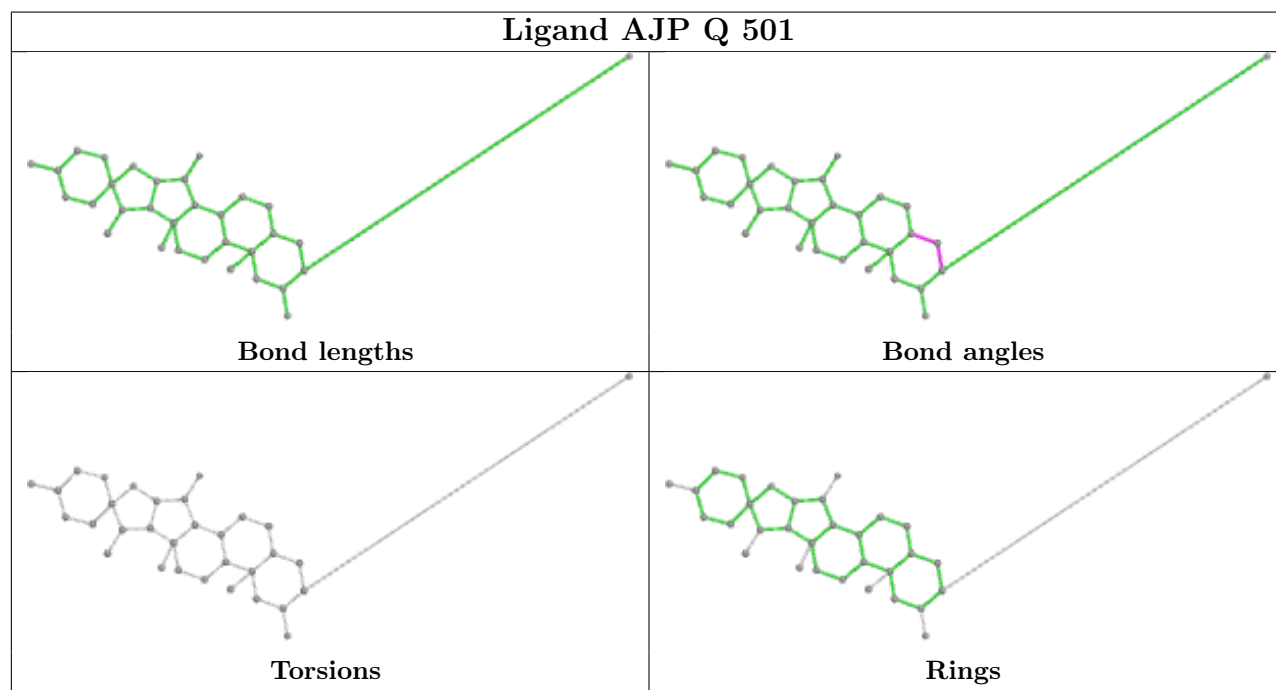
Mol	Chain	Res	Type	Atoms
10	O	1004	PLC	C4-O4P-P-O2P
10	P	1004	PLC	O4P-C4-C5-N
10	P	1004	PLC	C1'-C'-O2-C2
10	P	1004	PLC	C4-O4P-P-O3P
11	P	1005	PIO	C1C-O13-P1-O11

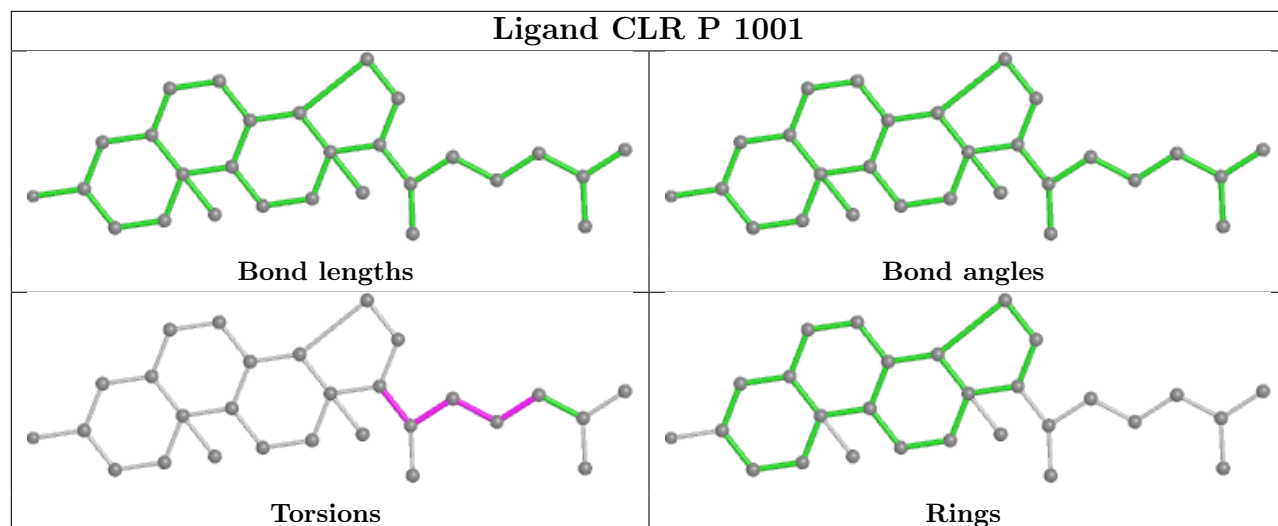
There are no ring outliers.

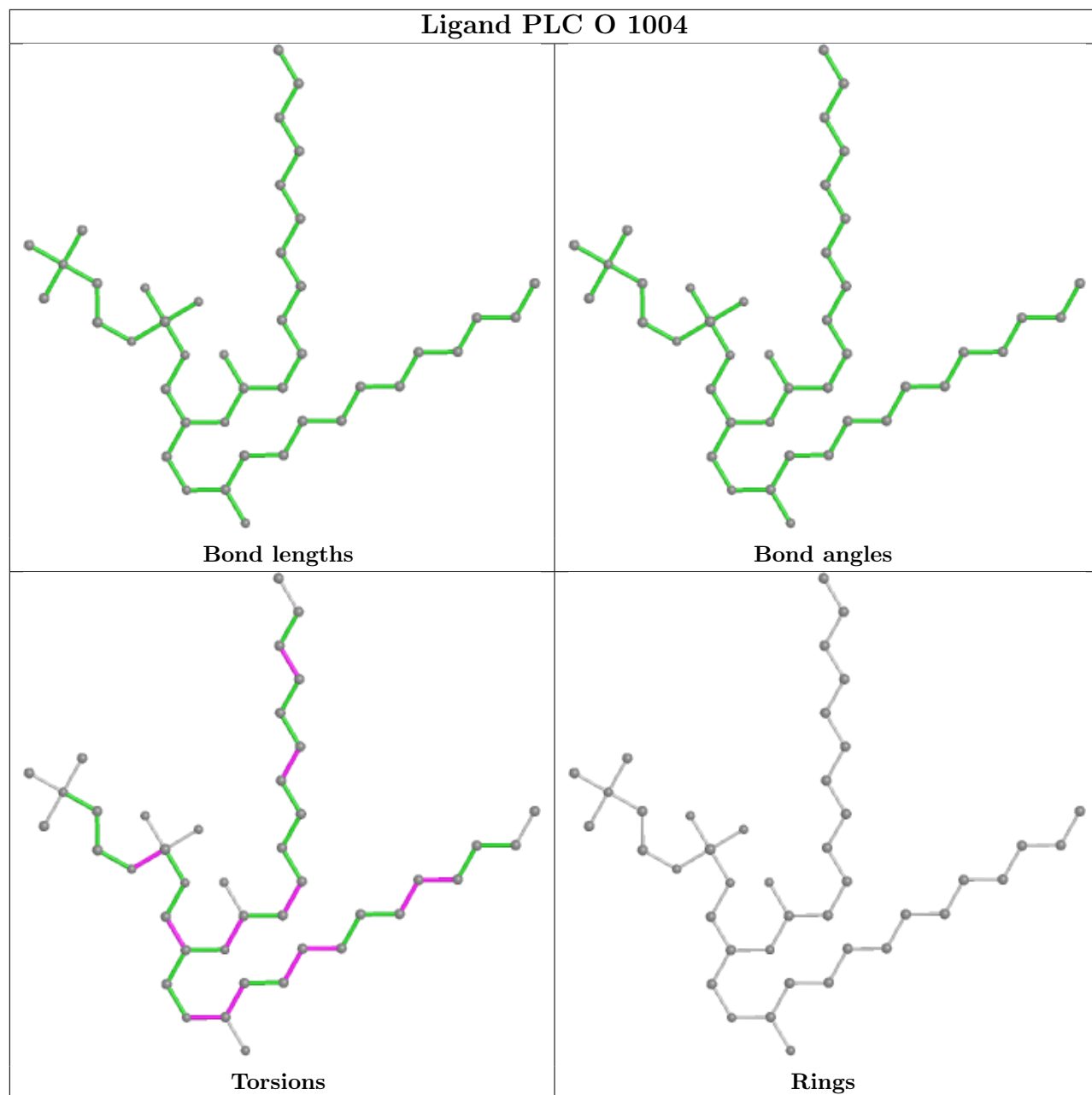
12 monomers are involved in 67 short contacts:

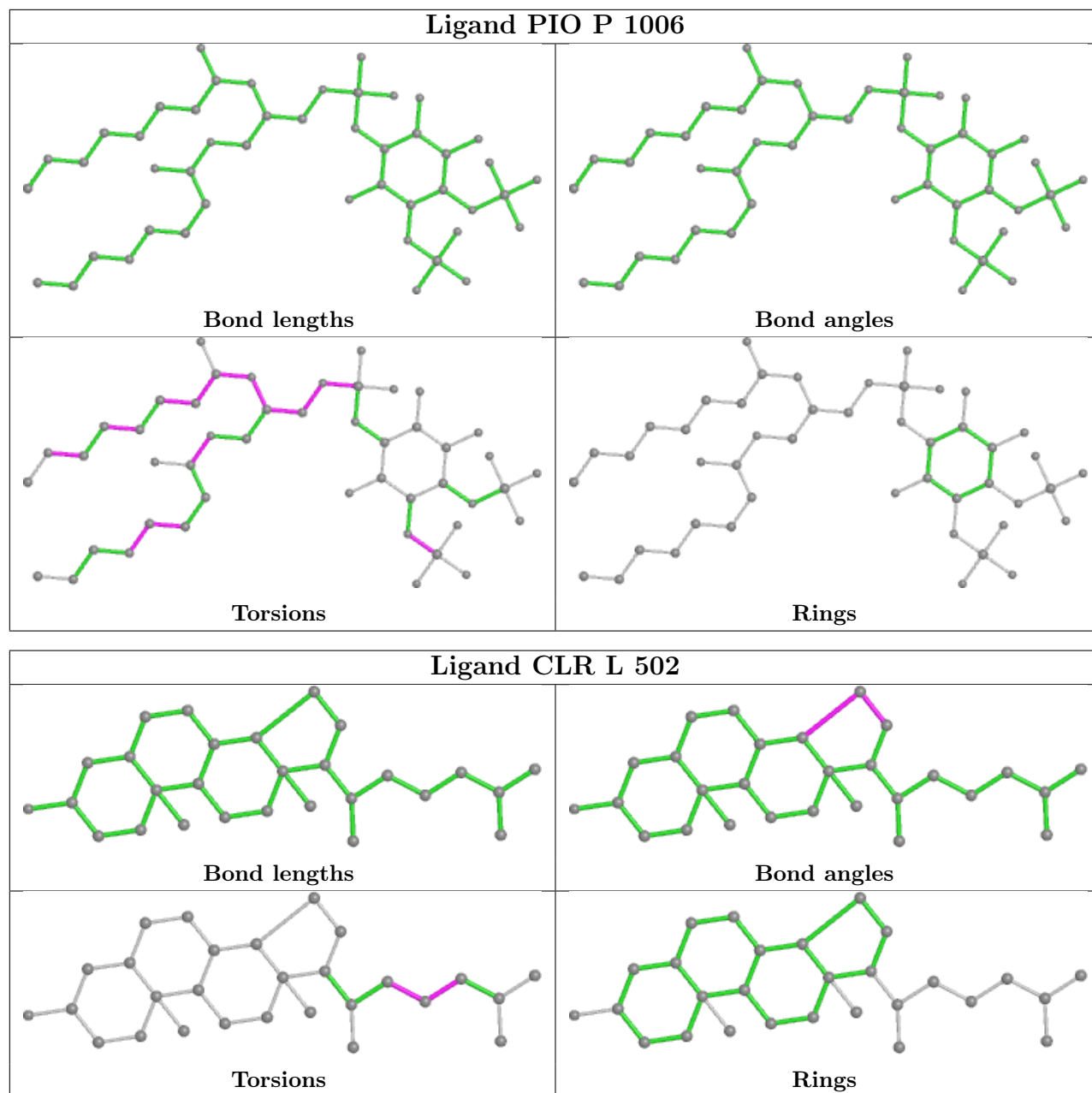
Mol	Chain	Res	Type	Clashes	Symm-Clashes
8	Q	501	AJP	2	0
7	P	1003	CLR	12	0
7	P	1001	CLR	2	0
10	O	1004	PLC	3	0
11	P	1006	PIO	16	0
7	L	502	CLR	2	0
8	Q	502	AJP	5	0
7	L	501	CLR	1	0
7	O	1001	CLR	2	0
11	P	1005	PIO	15	0
7	O	1003	CLR	14	0
10	P	1004	PLC	1	0

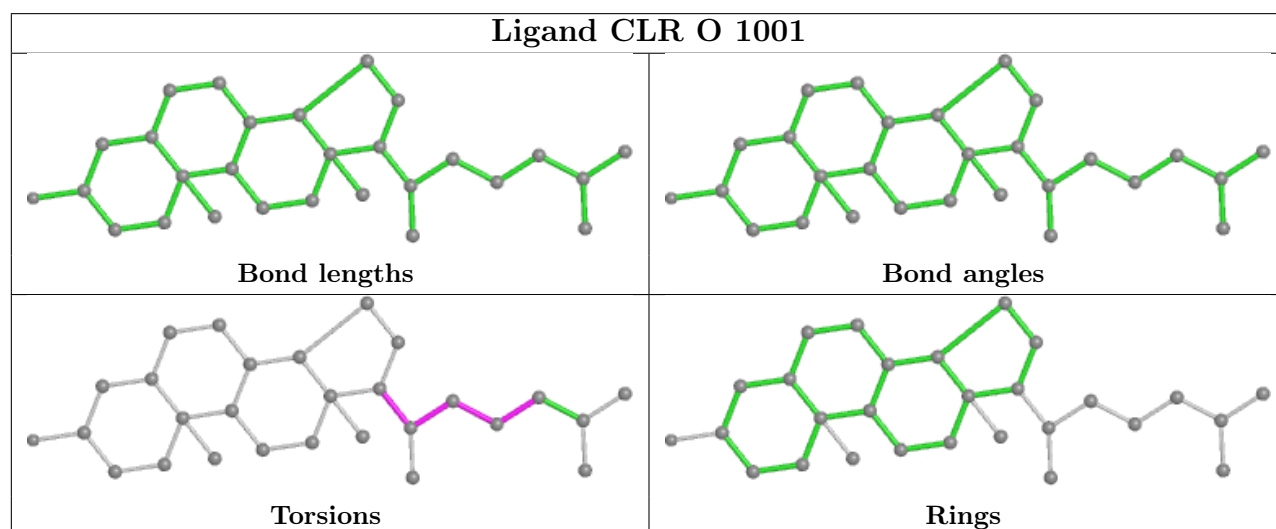
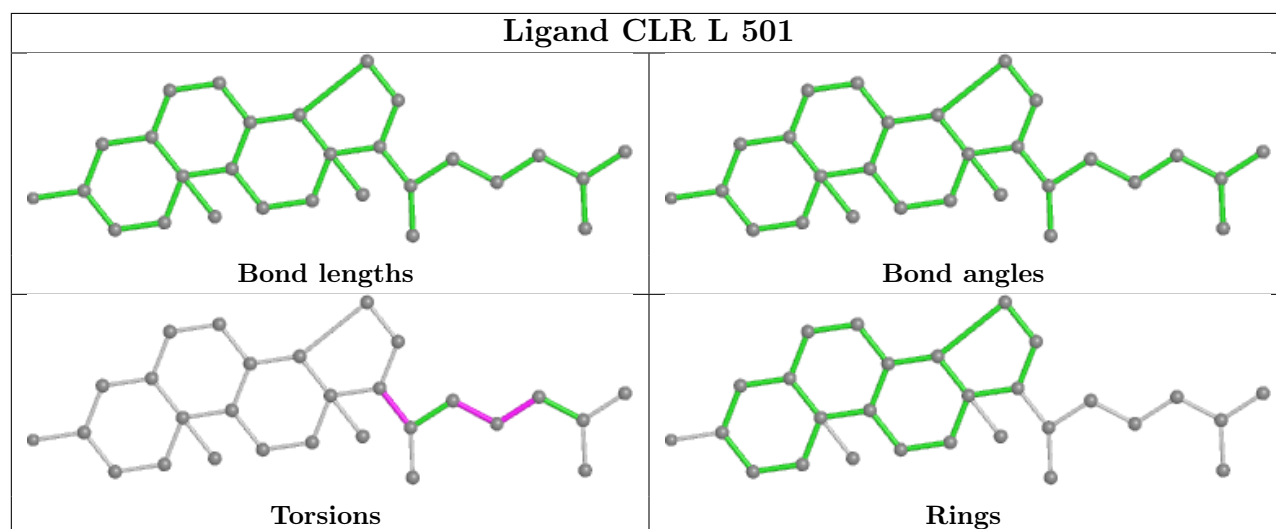
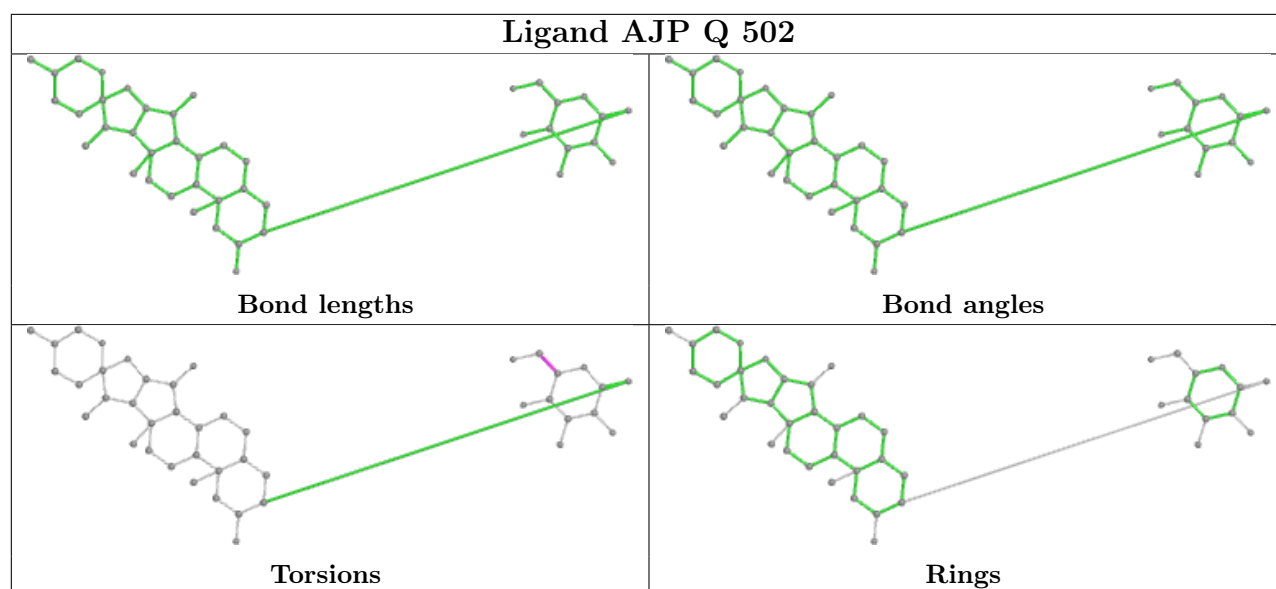
The following is a two-dimensional graphical depiction of Mogul quality analysis of bond lengths, bond angles, torsion angles, and ring geometry for all instances of the Ligand of Interest. In addition, ligands with molecular weight > 250 and outliers as shown on the validation Tables will also be included. For torsion angles, if less than 5% of the Mogul distribution of torsion angles is within 10 degrees of the torsion angle in question, then that torsion angle is considered an outlier. Any bond that is central to one or more torsion angles identified as an outlier by Mogul will be highlighted in the graph. For rings, the root-mean-square deviation (RMSD) between the ring in question and similar rings identified by Mogul is calculated over all ring torsion angles. If the average RMSD is greater than 60 degrees and the minimal RMSD between the ring in question and any Mogul-identified rings is also greater than 60 degrees, then that ring is considered an outlier. The outliers are highlighted in purple. The color gray indicates Mogul did not find sufficient equivalents in the CSD to analyse the geometry.

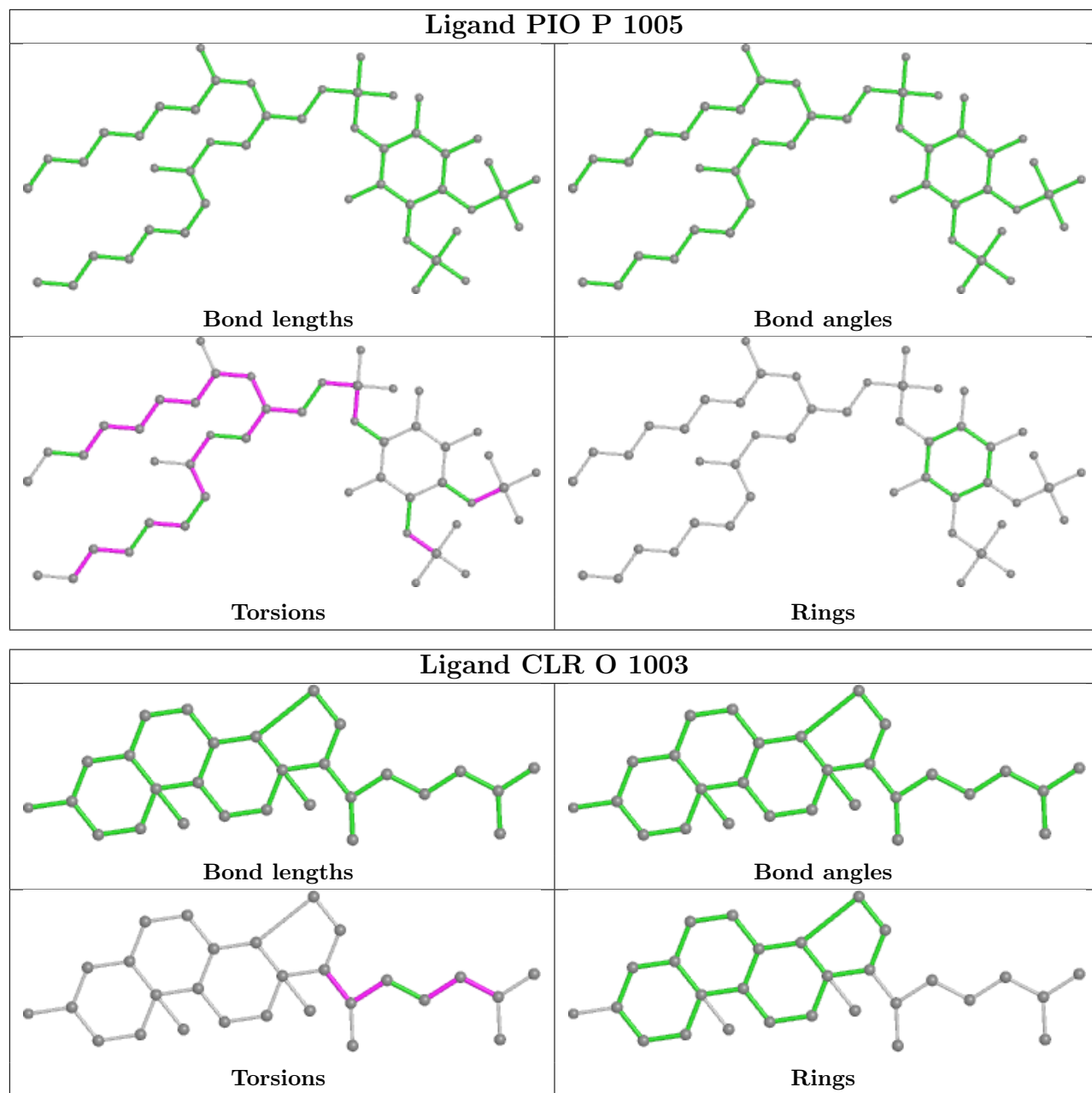


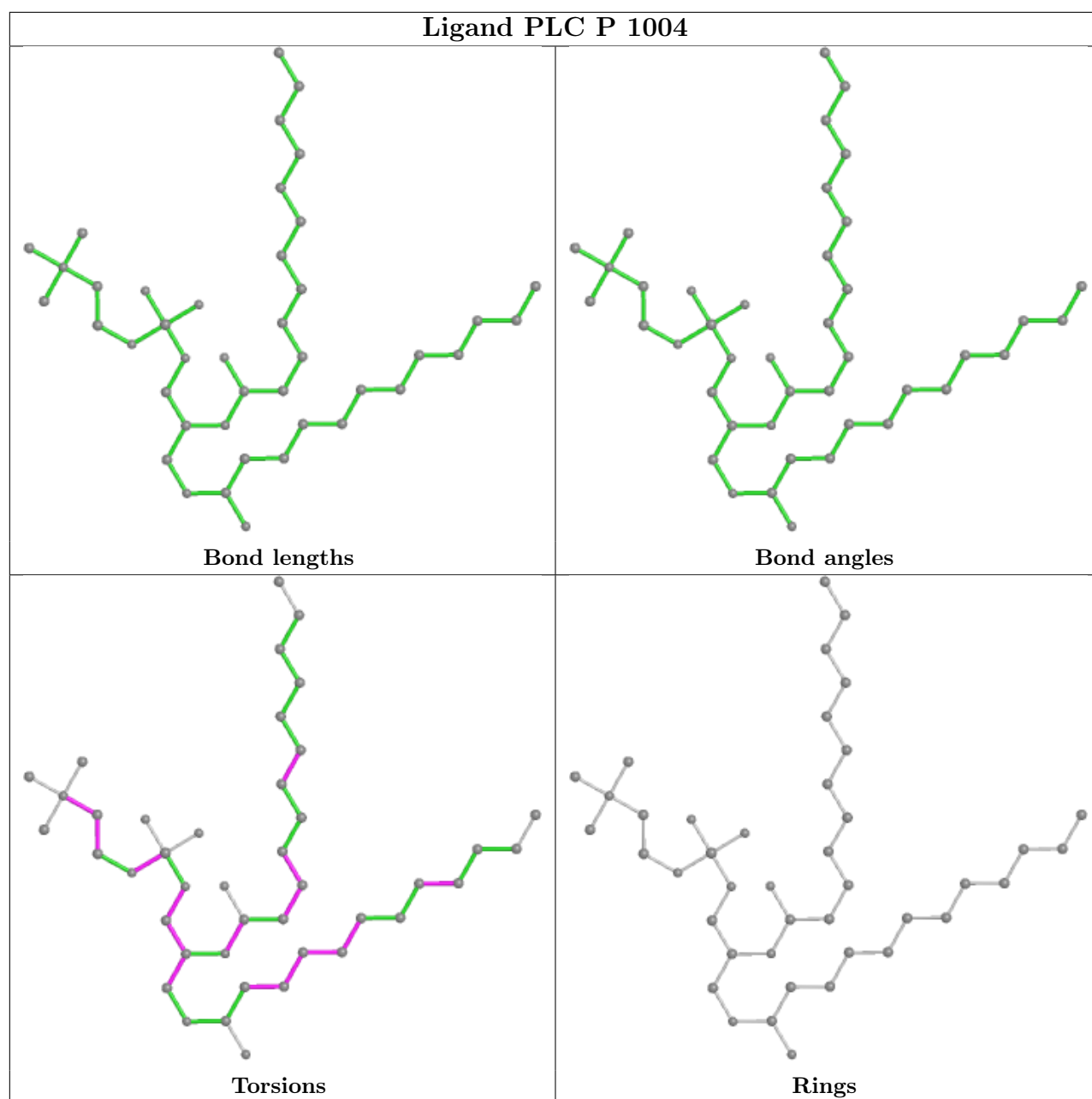












5.7 Other polymers [i](#)

There are no such residues in this entry.

5.8 Polymer linkage issues [i](#)

There are no chain breaks in this entry.

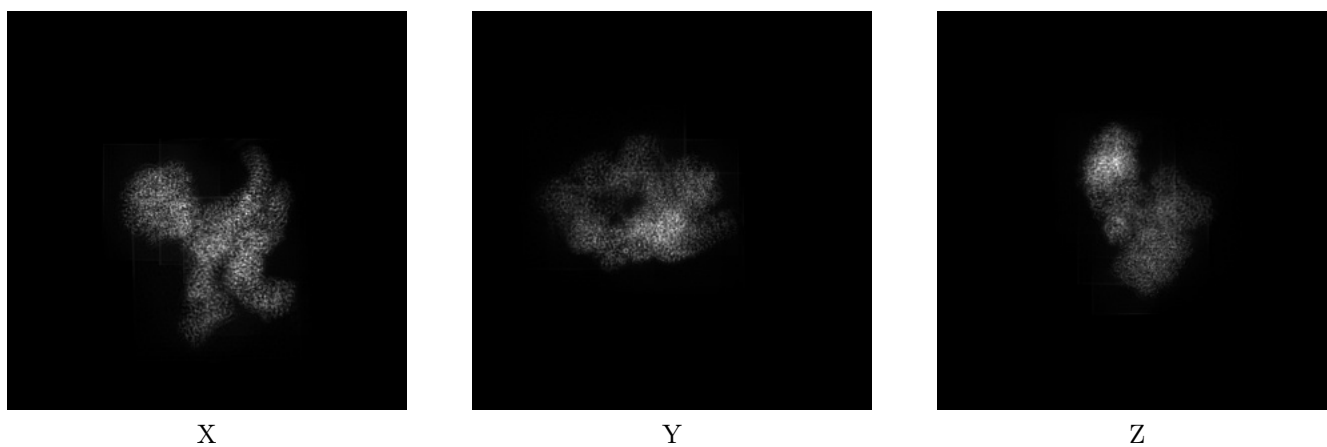
6 Map visualisation [i](#)

This section contains visualisations of the EMDB entry EMD-26943. These allow visual inspection of the internal detail of the map and identification of artifacts.

No raw map or half-maps were deposited for this entry and therefore no images, graphs, etc. pertaining to the raw map can be shown.

6.1 Orthogonal projections [i](#)

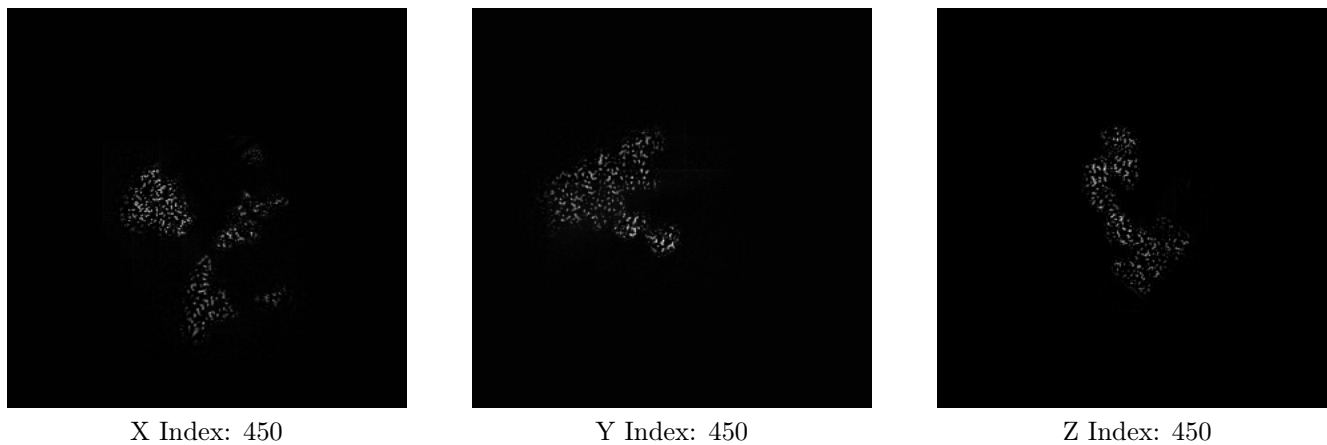
6.1.1 Primary map



The images above show the map projected in three orthogonal directions.

6.2 Central slices [i](#)

6.2.1 Primary map



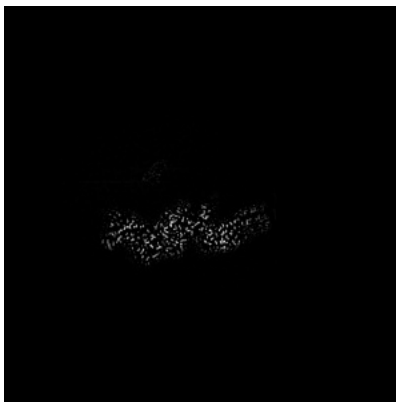
The images above show central slices of the map in three orthogonal directions.

6.3 Largest variance slices [i](#)

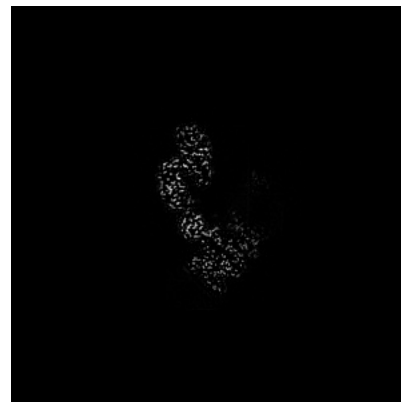
6.3.1 Primary map



X Index: 405



Y Index: 555



Z Index: 441

The images above show the largest variance slices of the map in three orthogonal directions.

6.4 Orthogonal surface views [i](#)

6.4.1 Primary map



X



Y



Z

The images above show the 3D surface view of the map at the recommended contour level 0.2. These images, in conjunction with the slice images, may facilitate assessment of whether an appropriate contour level has been provided.

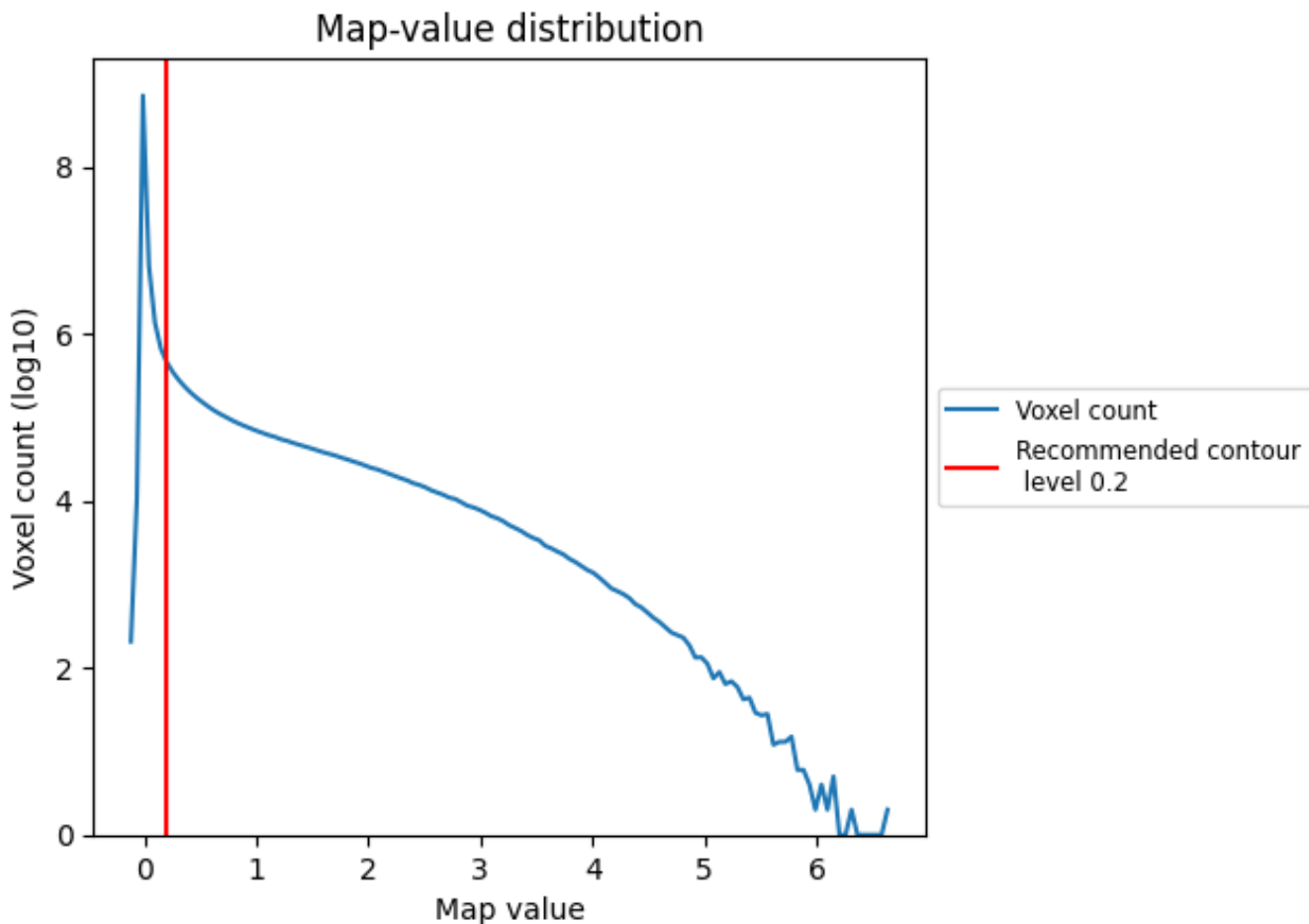
6.5 Mask visualisation

This section was not generated. No masks/segmentation were deposited.

7 Map analysis [i](#)

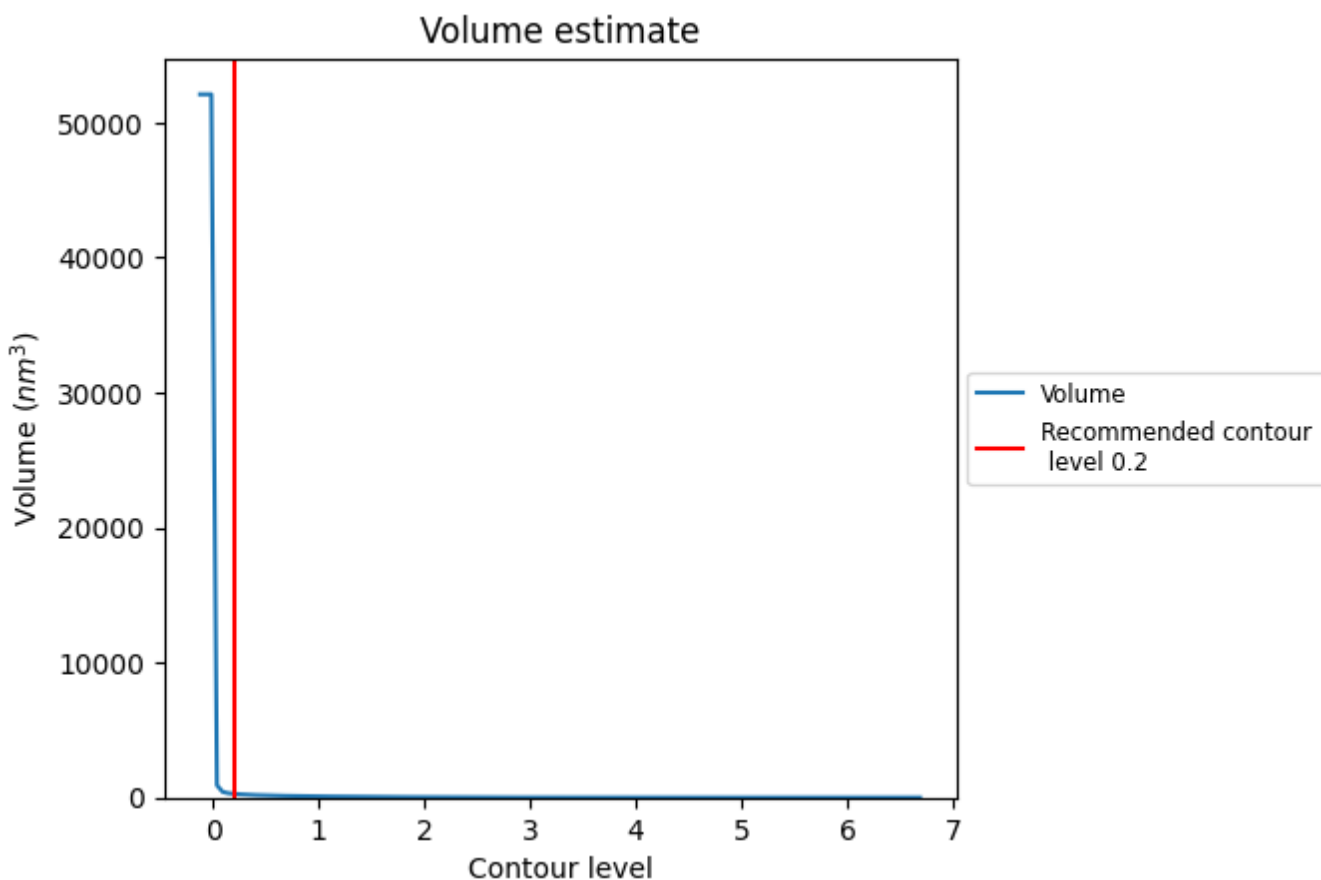
This section contains the results of statistical analysis of the map.

7.1 Map-value distribution [i](#)



The map-value distribution is plotted in 128 intervals along the x-axis. The y-axis is logarithmic. A spike in this graph at zero usually indicates that the volume has been masked.

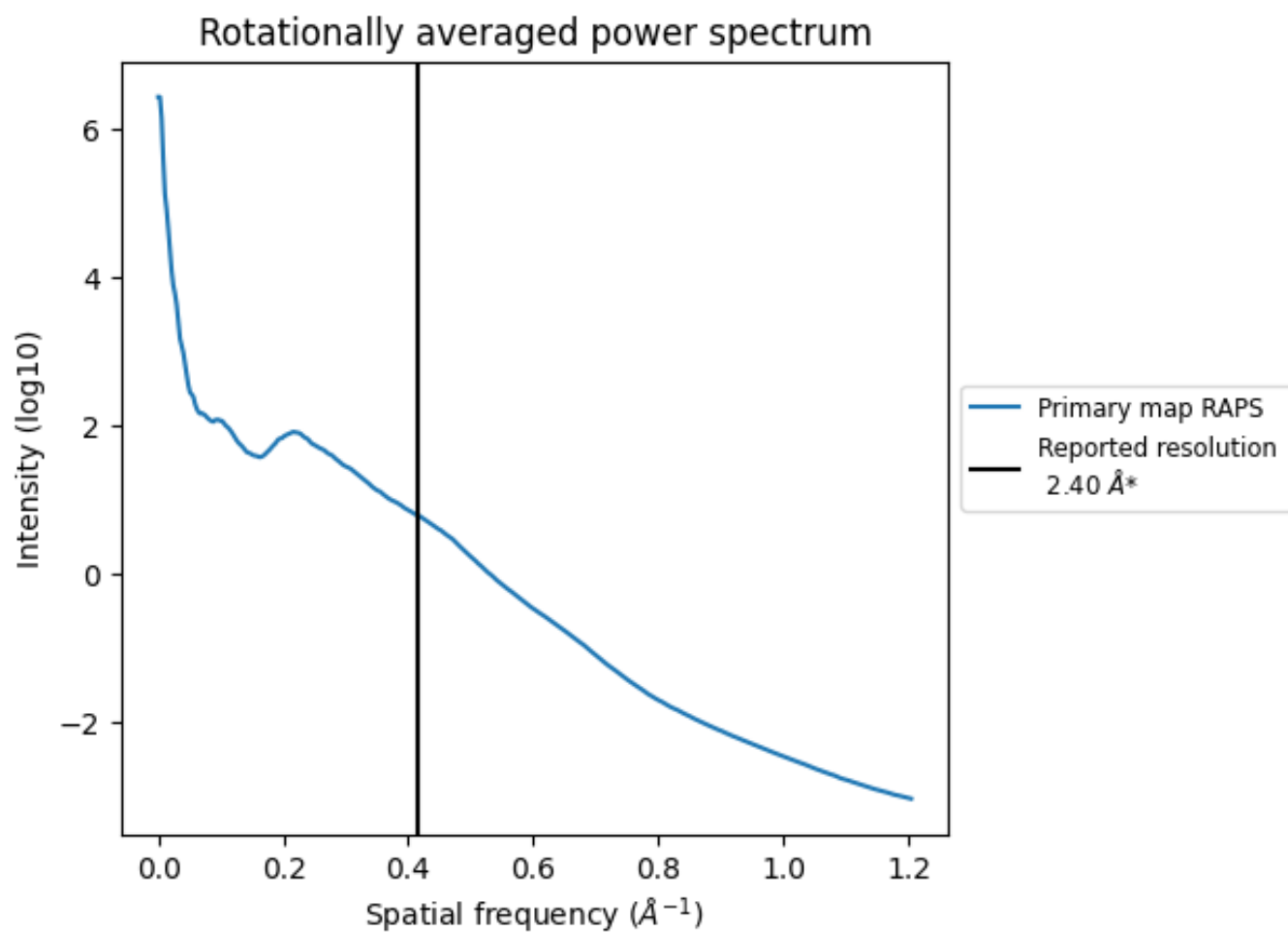
7.2 Volume estimate [i](#)



The volume at the recommended contour level is 275 nm^3 ; this corresponds to an approximate mass of 249 kDa.

The volume estimate graph shows how the enclosed volume varies with the contour level. The recommended contour level is shown as a vertical line and the intersection between the line and the curve gives the volume of the enclosed surface at the given level.

7.3 Rotationally averaged power spectrum [i](#)

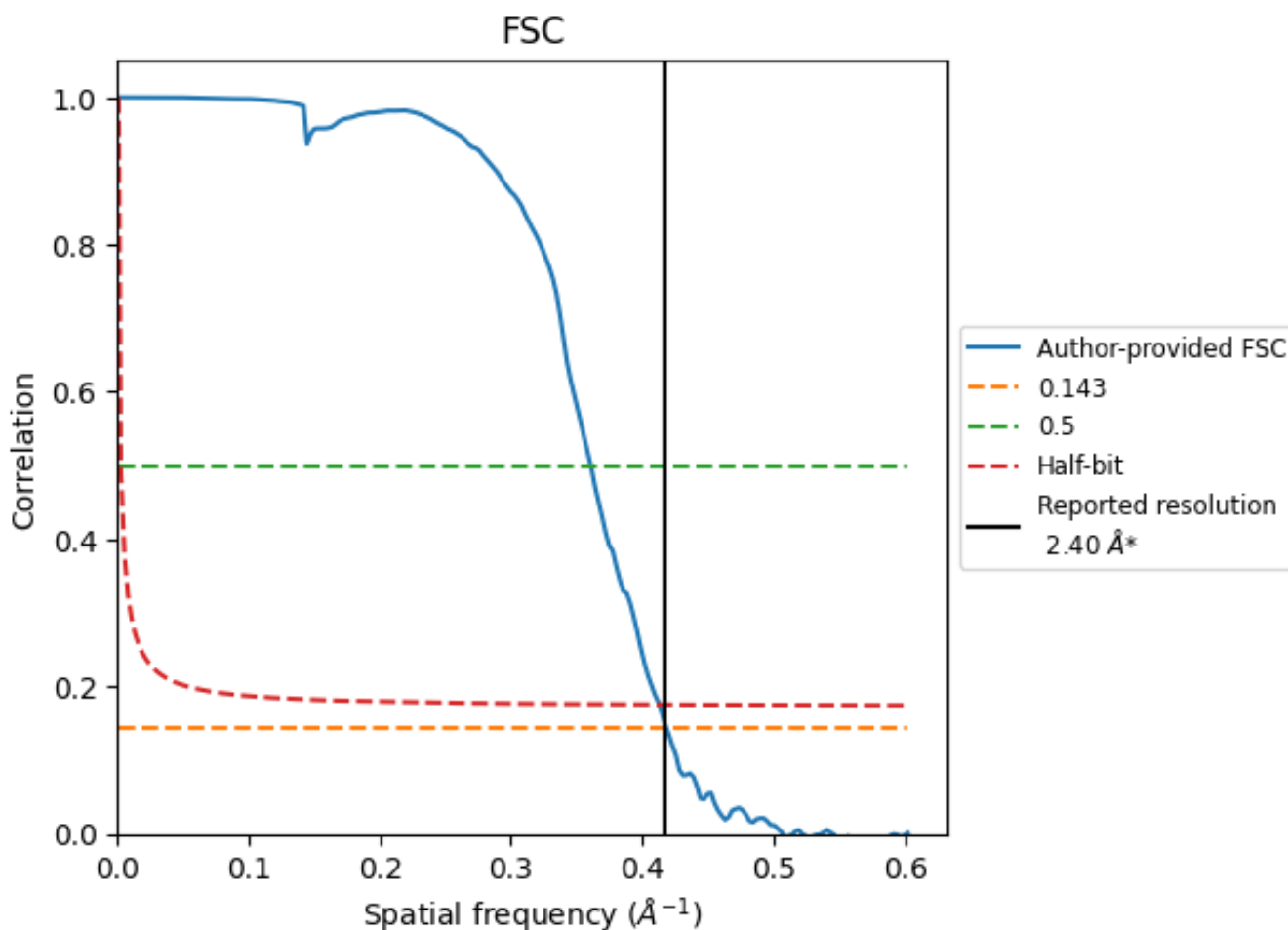


*Reported resolution corresponds to spatial frequency of 0.417 Å⁻¹

8 Fourier-Shell correlation [i](#)

Fourier-Shell Correlation (FSC) is the most commonly used method to estimate the resolution of single-particle and subtomogram-averaged maps. The shape of the curve depends on the imposed symmetry, mask and whether or not the two 3D reconstructions used were processed from a common reference. The reported resolution is shown as a black line. A curve is displayed for the half-bit criterion in addition to lines showing the 0.143 gold standard cut-off and 0.5 cut-off.

8.1 FSC [i](#)



*Reported resolution corresponds to spatial frequency of 0.417 Å⁻¹

8.2 Resolution estimates [i](#)

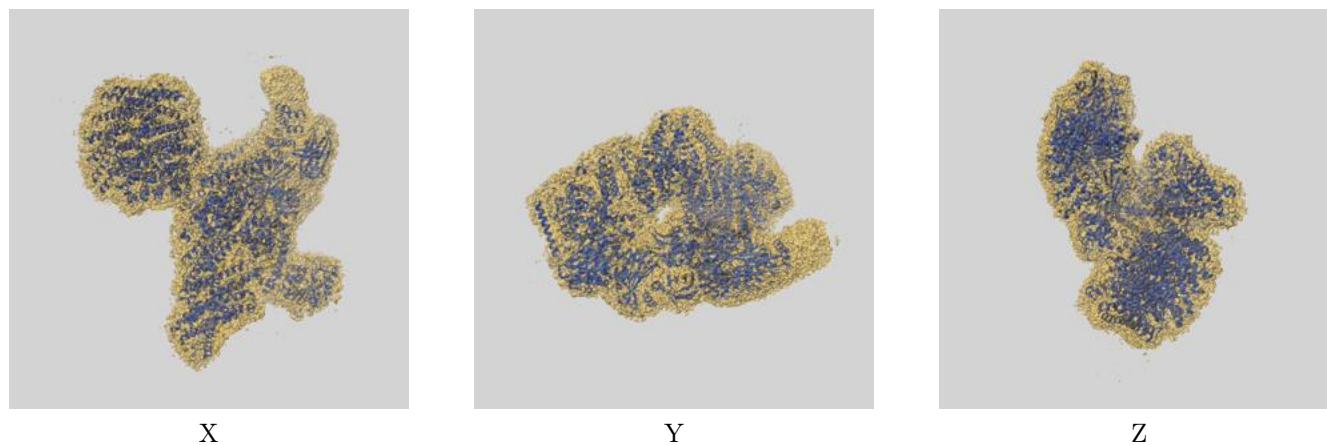
Resolution estimate (Å)	Estimation criterion (FSC cut-off)		
	0.143	0.5	Half-bit
Reported by author	2.40	-	-
Author-provided FSC curve	2.39	2.77	2.42
Unmasked-calculated*	-	-	-

*Resolution estimate based on FSC curve calculated by comparison of deposited half-maps.

9 Map-model fit [i](#)

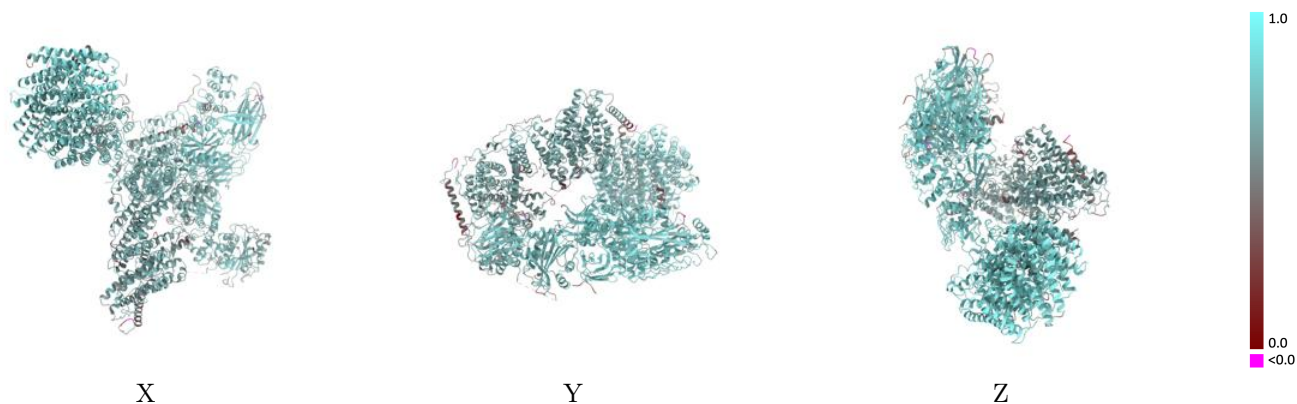
This section contains information regarding the fit between EMDB map EMD-26943 and PDB model 7V0K. Per-residue inclusion information can be found in section 3 on page 9.

9.1 Map-model overlay [i](#)



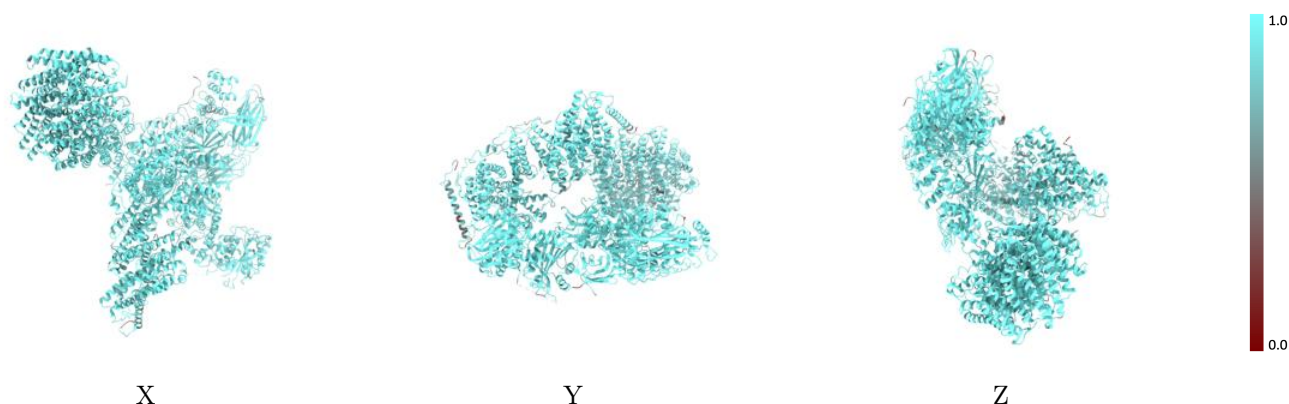
The images above show the 3D surface view of the map at the recommended contour level 0.2 at 50% transparency in yellow overlaid with a ribbon representation of the model coloured in blue. These images allow for the visual assessment of the quality of fit between the atomic model and the map.

9.2 Q-score mapped to coordinate model [i](#)



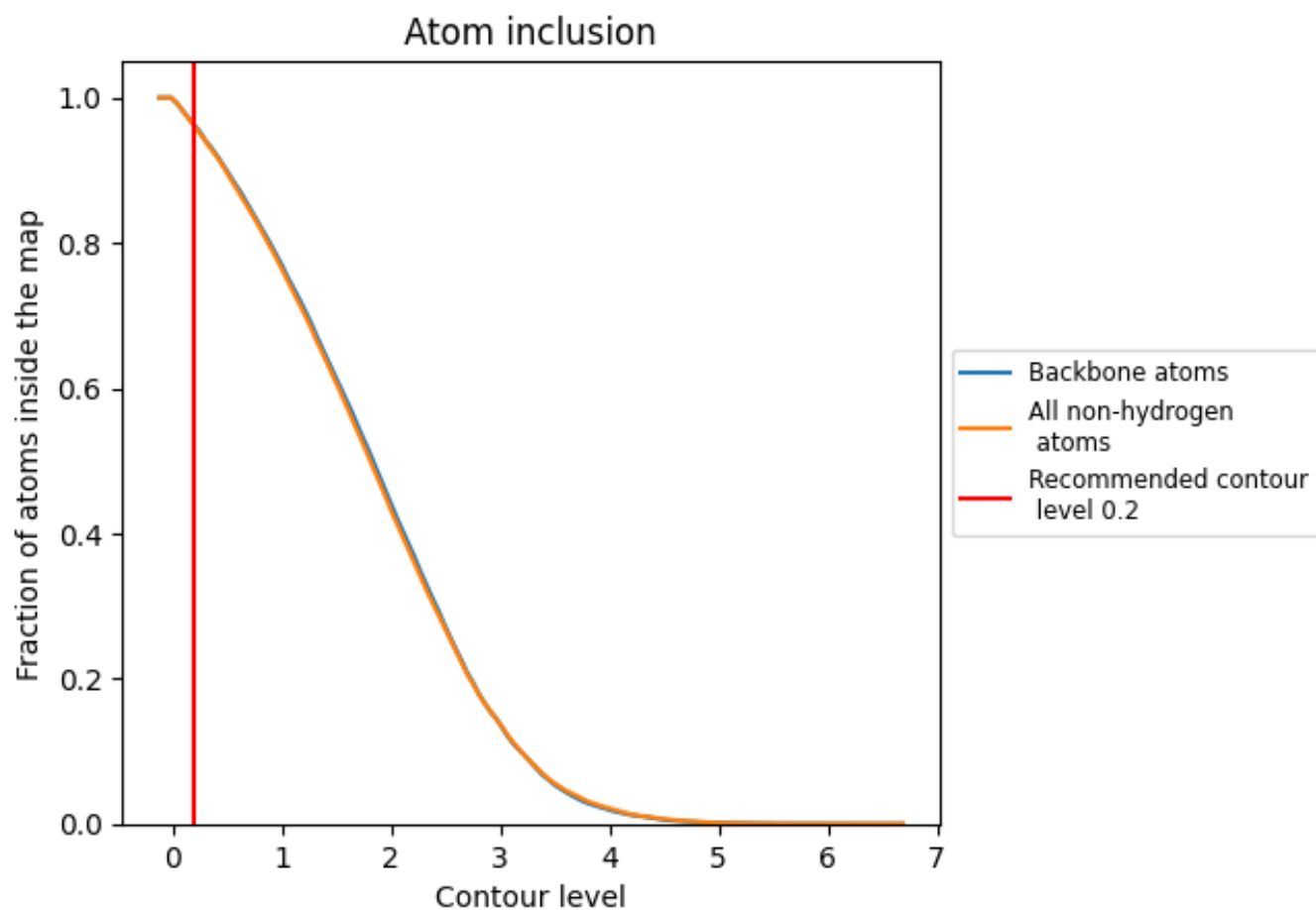
The images above show the model with each residue coloured according its Q-score. This shows their resolvability in the map with higher Q-score values reflecting better resolvability. Please note: Q-score is calculating the resolvability of atoms, and thus high values are only expected at resolutions at which atoms can be resolved. Low Q-score values may therefore be expected for many entries.

9.3 Atom inclusion mapped to coordinate model [i](#)



The images above show the model with each residue coloured according to its atom inclusion. This shows to what extent they are inside the map at the recommended contour level (0.2).























9.4 Atom inclusion [i](#)



At the recommended contour level, 96% of all backbone atoms, 96% of all non-hydrogen atoms, are inside the map.

9.5 Map-model fit summary

The table lists the average atom inclusion at the recommended contour level (0.2) and Q-score for the entire model and for each chain.

Chain	Atom inclusion	Q-score
All	 0.9605	 0.7030
D	 0.7980	 0.4420
H	 0.9920	 0.7510
K	 0.9750	 0.7460
L	 0.9919	 0.8060
N	 0.6498	 0.3790
O	 0.9424	 0.6240
P	 0.9492	 0.6390
Q	 0.9840	 0.7880
W	 0.8355	 0.6070
X	 0.9763	 0.7540

