



Full wwPDB X-ray Structure Validation Report ⓘ

Oct 10, 2023 – 11:27 PM EDT

PDB ID : 7JUY
Title : Crystal Structure of KSR1:MEK1 in complex with AMP-PNP, and allosteric MEK inhibitor Cobimetinib
Authors : Khan, Z.M.; Dar, A.C.
Deposited on : 2020-08-20
Resolution : 3.10 Å(reported)

This is a Full wwPDB X-ray Structure Validation Report for a publicly released PDB entry.

We welcome your comments at validation@mail.wwpdb.org

A user guide is available at

<https://www.wwpdb.org/validation/2017/XrayValidationReportHelp>

with specific help available everywhere you see the ⓘ symbol.

The types of validation reports are described at

<http://www.wwpdb.org/validation/2017/FAQs#types>.

The following versions of software and data (see [references ⓘ](#)) were used in the production of this report:

MolProbity : 4.02b-467
Mogul : 1.8.5 (274361), CSD as541be (2020)
Xtriage (Phenix) : 1.13
EDS : 2.35.1
buster-report : 1.1.7 (2018)
Percentile statistics : 20191225.v01 (using entries in the PDB archive December 25th 2019)
Refmac : 5.8.0158
CCP4 : 7.0.044 (Gargrove)
Ideal geometry (proteins) : Engh & Huber (2001)
Ideal geometry (DNA, RNA) : Parkinson et al. (1996)
Validation Pipeline (wwPDB-VP) : 2.35.1

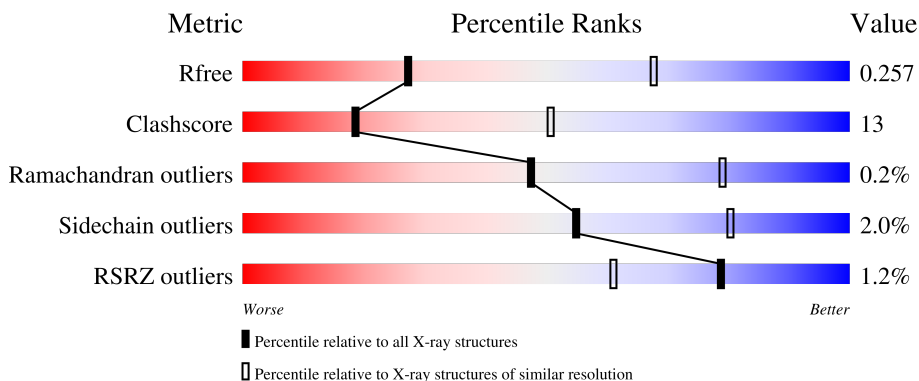
1 Overall quality at a glance

The following experimental techniques were used to determine the structure:

X-RAY DIFFRACTION

The reported resolution of this entry is 3.10 Å.

Percentile scores (ranging between 0-100) for global validation metrics of the entry are shown in the following graphic. The table shows the number of entries on which the scores are based.



Metric	Whole archive (#Entries)	Similar resolution (#Entries, resolution range(Å))
R_{free}	130704	1094 (3.10-3.10)
Clashscore	141614	1184 (3.10-3.10)
Ramachandran outliers	138981	1141 (3.10-3.10)
Sidechain outliers	138945	1141 (3.10-3.10)
RSRZ outliers	127900	1067 (3.10-3.10)

The table below summarises the geometric issues observed across the polymeric chains and their fit to the electron density. The red, orange, yellow and green segments of the lower bar indicate the fraction of residues that contain outliers for ≥ 3 , 2, 1 and 0 types of geometric quality criteria respectively. A grey segment represents the fraction of residues that are not modelled. The numeric value for each fraction is indicated below the corresponding segment, with a dot representing fractions $\leq 5\%$. The upper red bar (where present) indicates the fraction of residues that have poor fit to the electron density. The numeric value is given above the bar.

Mol	Chain	Length	Quality of chain
1	B	334	
2	C	384	

2 Entry composition i

There are 6 unique types of molecules in this entry. The entry contains 4763 atoms, of which 0 are hydrogens and 0 are deuteriums.

In the tables below, the ZeroOcc column contains the number of atoms modelled with zero occupancy, the AltConf column contains the number of residues with at least one atom in alternate conformation and the Trace column contains the number of residues modelled with at most 2 atoms.

- Molecule 1 is a protein called Kinase suppressor of Ras 1.

Mol	Chain	Residues	Atoms					ZeroOcc	AltConf	Trace
			Total	C	N	O	S			
1	B	276	2221	1422	387	399	13	0	0	0

There are 26 discrepancies between the modelled and reference sequences:

Chain	Residue	Modelled	Actual	Comment	Reference
B	566	MET	-	initiating methionine	UNP Q8IVT5
B	567	SER	-	expression tag	UNP Q8IVT5
B	568	TYR	-	expression tag	UNP Q8IVT5
B	569	TYR	-	expression tag	UNP Q8IVT5
B	570	HIS	-	expression tag	UNP Q8IVT5
B	571	HIS	-	expression tag	UNP Q8IVT5
B	572	HIS	-	expression tag	UNP Q8IVT5
B	573	HIS	-	expression tag	UNP Q8IVT5
B	574	HIS	-	expression tag	UNP Q8IVT5
B	575	HIS	-	expression tag	UNP Q8IVT5
B	576	ASP	-	expression tag	UNP Q8IVT5
B	577	TYR	-	expression tag	UNP Q8IVT5
B	578	ASP	-	expression tag	UNP Q8IVT5
B	579	ILE	-	expression tag	UNP Q8IVT5
B	580	PRO	-	expression tag	UNP Q8IVT5
B	581	THR	-	expression tag	UNP Q8IVT5
B	582	THR	-	expression tag	UNP Q8IVT5
B	583	GLU	-	expression tag	UNP Q8IVT5
B	584	ASN	-	expression tag	UNP Q8IVT5
B	585	LEU	-	expression tag	UNP Q8IVT5
B	586	TYR	-	expression tag	UNP Q8IVT5
B	587	PHE	-	expression tag	UNP Q8IVT5
B	588	GLN	-	expression tag	UNP Q8IVT5
B	589	GLY	-	expression tag	UNP Q8IVT5
B	590	ALA	-	expression tag	UNP Q8IVT5
B	898	GLU	ASP	conflict	UNP Q8IVT5

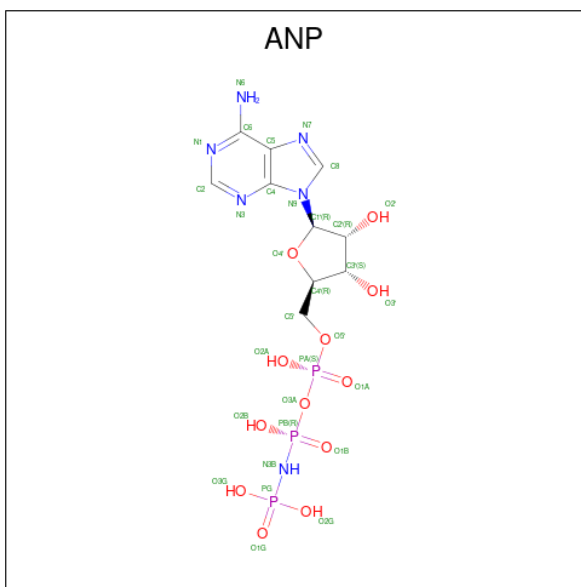
- Molecule 2 is a protein called Dual specificity mitogen-activated protein kinase kinase 1.

Mol	Chain	Residues	Atoms					ZeroOcc	AltConf	Trace
			Total	C	N	O	S			
2	C	311	2447	1562	417	452	16	0	0	0

There are 25 discrepancies between the modelled and reference sequences:

Chain	Residue	Modelled	Actual	Comment	Reference
C	10	MET	-	initiating methionine	UNP P29678
C	11	SER	-	expression tag	UNP P29678
C	12	TYR	-	expression tag	UNP P29678
C	13	TYR	-	expression tag	UNP P29678
C	14	HIS	-	expression tag	UNP P29678
C	15	HIS	-	expression tag	UNP P29678
C	16	HIS	-	expression tag	UNP P29678
C	17	HIS	-	expression tag	UNP P29678
C	18	HIS	-	expression tag	UNP P29678
C	19	HIS	-	expression tag	UNP P29678
C	20	ASP	-	expression tag	UNP P29678
C	21	TYR	-	expression tag	UNP P29678
C	22	ASP	-	expression tag	UNP P29678
C	23	ILE	-	expression tag	UNP P29678
C	24	PRO	-	expression tag	UNP P29678
C	25	THR	-	expression tag	UNP P29678
C	26	THR	-	expression tag	UNP P29678
C	27	GLU	-	expression tag	UNP P29678
C	28	ASN	-	expression tag	UNP P29678
C	29	LEU	-	expression tag	UNP P29678
C	30	TYR	-	expression tag	UNP P29678
C	31	PHE	-	expression tag	UNP P29678
C	32	GLN	-	expression tag	UNP P29678
C	33	GLY	-	expression tag	UNP P29678
C	34	ALA	-	expression tag	UNP P29678

- Molecule 3 is PHOSPHOAMINOPHOSPHONIC ACID-ADENYLATE ESTER (three-letter code: ANP) (formula: C₁₀H₁₇N₆O₁₂P₃) (labeled as "Ligand of Interest" by depositor).

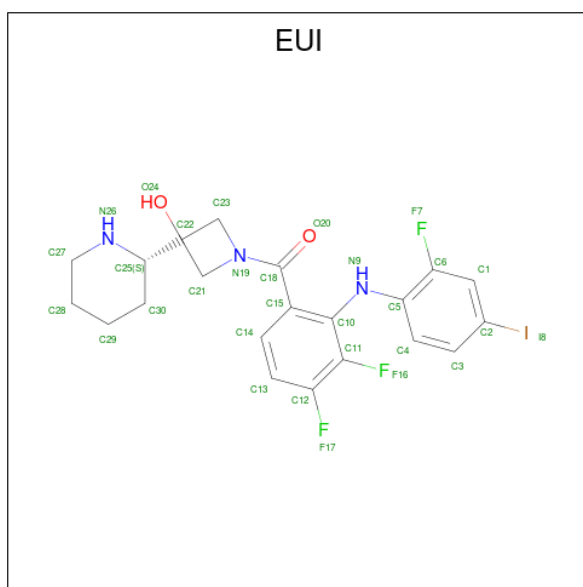


Mol	Chain	Residues	Atoms					ZeroOcc	AltConf
			Total	C	N	O	P		
3	B	1	31	10	6	12	3	0	0
3	C	1	31	10	6	12	3	0	0

- Molecule 4 is MAGNESIUM ION (three-letter code: MG) (formula: Mg) (labeled as "Ligand of Interest" by depositor).

Mol	Chain	Residues	Atoms		ZeroOcc	AltConf
			Total	Mg		
4	B	1	1	1	0	0
4	C	1	1	1	0	0

- Molecule 5 is [3,4-BIS(FLUORANYL)-2-[(2-FLUORANYL-4-IODANYL-PHENYL)AMINO]PHENYL]-[3-OXIDANYL-3-[(2S)-PIPERIDIN-2-YL]AZETIDIN-1-YL]METHANONE (three-letter code: EUI) (formula: C₂₁H₂₁F₃IN₃O₂) (labeled as "Ligand of Interest" by depositor).



Mol	Chain	Residues	Atoms					ZeroOcc	AltConf	
			Total	C	F	I	N			O
5	C	1	30	21	3	1	3	2	0	0

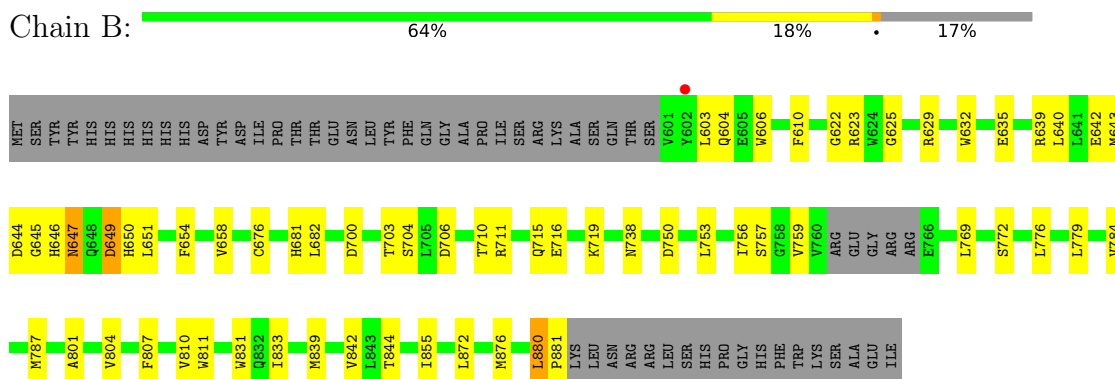
- Molecule 6 is water.

Mol	Chain	Residues	Atoms		ZeroOcc	AltConf
6	B	1	Total	O	0	0
			1	1		

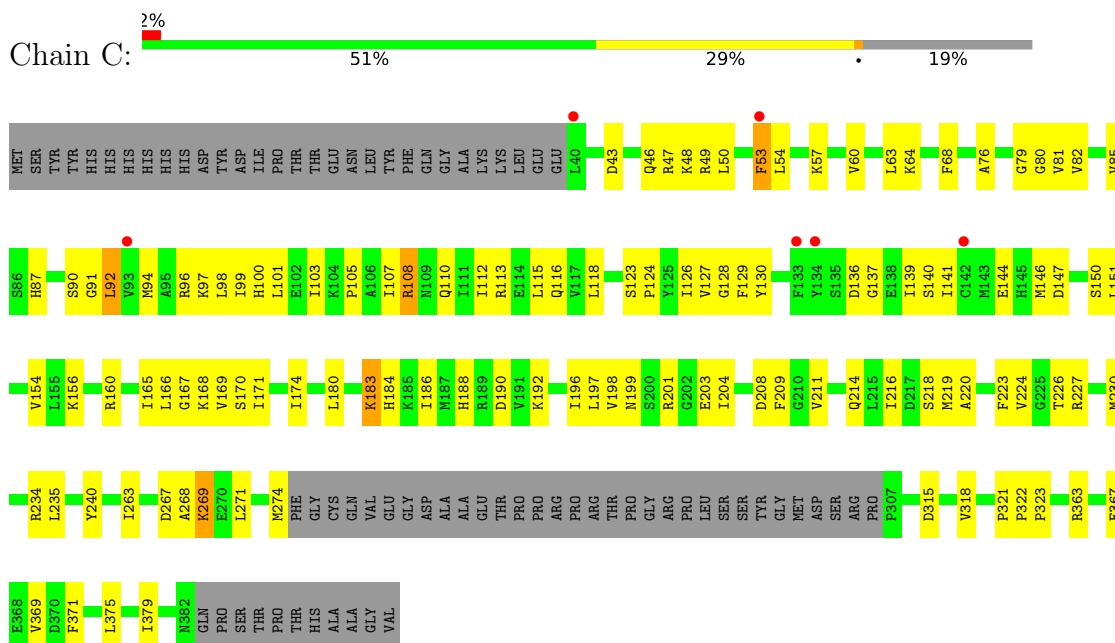
3 Residue-property plots [i](#)

These plots are drawn for all protein, RNA, DNA and oligosaccharide chains in the entry. The first graphic for a chain summarises the proportions of the various outlier classes displayed in the second graphic. The second graphic shows the sequence view annotated by issues in geometry and electron density. Residues are color-coded according to the number of geometric quality criteria for which they contain at least one outlier: green = 0, yellow = 1, orange = 2 and red = 3 or more. A red dot above a residue indicates a poor fit to the electron density ($RSRZ > 2$). Stretches of 2 or more consecutive residues without any outlier are shown as a green connector. Residues present in the sample, but not in the model, are shown in grey.

- Molecule 1: Kinase suppressor of Ras 1



- Molecule 2: Dual specificity mitogen-activated protein kinase kinase 1



4 Data and refinement statistics

Property	Value	Source
Space group	P 61 2 2	Depositor
Cell constants a, b, c, α , β , γ	136.00Å 136.00Å 219.00Å 90.00° 90.00° 120.00°	Depositor
Resolution (Å)	49.65 – 3.10 49.65 – 3.10	Depositor EDS
% Data completeness (in resolution range)	99.6 (49.65-3.10) 99.7 (49.65-3.10)	Depositor EDS
R_{merge}	(Not available)	Depositor
R_{sym}	(Not available)	Depositor
$\langle I/\sigma(I) \rangle$ ¹	1.43 (at 3.12Å)	Xtrriage
Refinement program	PHENIX (1.14rc1_3177)	Depositor
R, R_{free}	0.247 , 0.257 0.247 , 0.257	Depositor DCC
R_{free} test set	1163 reflections (5.19%)	wwPDB-VP
Wilson B-factor (Å ²)	116.6	Xtrriage
Anisotropy	0.141	Xtrriage
Bulk solvent k_{sol} (e/Å ³), B_{sol} (Å ²)	0.29 , 64.1	EDS
L-test for twinning ²	$\langle L \rangle = 0.50$, $\langle L^2 \rangle = 0.33$	Xtrriage
Estimated twinning fraction	No twinning to report.	Xtrriage
F_o, F_c correlation	0.94	EDS
Total number of atoms	4763	wwPDB-VP
Average B, all atoms (Å ²)	117.0	wwPDB-VP

Xtrriage's analysis on translational NCS is as follows: *The largest off-origin peak in the Patterson function is 2.50% of the height of the origin peak. No significant pseudotranslation is detected.*

¹Intensities estimated from amplitudes.

²Theoretical values of $\langle |L| \rangle$, $\langle L^2 \rangle$ for acentric reflections are 0.5, 0.333 respectively for untwinned datasets, and 0.375, 0.2 for perfectly twinned datasets.

5 Model quality [i](#)

5.1 Standard geometry [i](#)

Bond lengths and bond angles in the following residue types are not validated in this section: EUI, ANP, MG

The Z score for a bond length (or angle) is the number of standard deviations the observed value is removed from the expected value. A bond length (or angle) with $|Z| > 5$ is considered an outlier worth inspection. RMSZ is the root-mean-square of all Z scores of the bond lengths (or angles).

Mol	Chain	Bond lengths		Bond angles	
		RMSZ	# Z >5	RMSZ	# Z >5
1	B	0.34	0/2274	0.61	3/3068 (0.1%)
2	C	0.35	0/2494	0.61	1/3358 (0.0%)
All	All	0.34	0/4768	0.61	4/6426 (0.1%)

Chiral center outliers are detected by calculating the chiral volume of a chiral center and verifying if the center is modelled as a planar moiety or with the opposite hand. A planarity outlier is detected by checking planarity of atoms in a peptide group, atoms in a mainchain group or atoms of a sidechain that are expected to be planar.

Mol	Chain	#Chirality outliers	#Planarity outliers
1	B	0	1
2	C	0	1
All	All	0	2

There are no bond length outliers.

All (4) bond angle outliers are listed below:

Mol	Chain	Res	Type	Atoms	Z	Observed($^{\circ}$)	Ideal($^{\circ}$)
1	B	880	LEU	CA-CB-CG	8.32	134.45	115.30
1	B	872	LEU	CA-CB-CG	5.83	128.72	115.30
2	C	92	LEU	CA-CB-CG	5.42	127.76	115.30
1	B	647	ASN	CB-CA-C	5.14	120.68	110.40

There are no chirality outliers.

All (2) planarity outliers are listed below:

Mol	Chain	Res	Type	Group
1	B	844	THR	Peptide
2	C	79	GLY	Mainchain

5.2 Too-close contacts [i](#)

In the following table, the Non-H and H(model) columns list the number of non-hydrogen atoms and hydrogen atoms in the chain respectively. The H(added) column lists the number of hydrogen atoms added and optimized by MolProbity. The Clashes column lists the number of clashes within the asymmetric unit, whereas Symm-Clashes lists symmetry-related clashes.

Mol	Chain	Non-H	H(model)	H(added)	Clashes	Symm-Clashes
1	B	2221	0	2199	39	0
2	C	2447	0	2486	86	0
3	B	31	0	13	3	0
3	C	31	0	13	1	0
4	B	1	0	0	0	0
4	C	1	0	0	0	0
5	C	30	0	21	6	0
6	B	1	0	0	1	0
All	All	4763	0	4732	125	0

The all-atom clashscore is defined as the number of clashes found per 1000 atoms (including hydrogen atoms). The all-atom clashscore for this structure is 13.

All (125) close contacts within the same asymmetric unit are listed below, sorted by their clash magnitude.

Atom-1	Atom-2	Interatomic distance (Å)	Clash overlap (Å)
2:C:127:VAL:HG23	5:C:402:EUI:I8	2.56	0.76
2:C:180:LEU:HD22	2:C:186:ILE:HD11	1.70	0.74
2:C:63:LEU:HD22	2:C:68:PHE:HZ	1.56	0.71
1:B:644:ASP:OD1	1:B:645:GLY:N	2.25	0.69
2:C:127:VAL:HG11	2:C:197:LEU:HD12	1.75	0.67
2:C:190:ASP:OD2	2:C:192:LYS:NZ	2.27	0.67
2:C:68:PHE:HB3	2:C:85:VAL:HG21	1.77	0.66
1:B:811:TRP:CE2	1:B:855:ILE:HD11	2.31	0.65
2:C:166:LEU:HA	2:C:169:VAL:HG22	1.78	0.65
2:C:160:ARG:NH2	2:C:274:MET:O	2.29	0.64
2:C:115:LEU:HD11	2:C:141:ILE:HD11	1.78	0.64
2:C:49:ARG:HH22	2:C:201:ARG:NH2	1.96	0.63
2:C:168:LYS:HE3	2:C:369:VAL:HG12	1.80	0.63
2:C:165:ILE:HD11	2:C:371:PHE:CD2	2.34	0.62
1:B:784:VAL:HA	1:B:787:MET:HG3	1.81	0.61
2:C:43:ASP:HB3	2:C:46:GLN:HG3	1.82	0.60
2:C:208:ASP:OD2	5:C:402:EUI:H211	2.02	0.60
2:C:98:LEU:HD23	2:C:140:SER:HB3	1.85	0.58
1:B:711:ARG:HB2	1:B:880:LEU:HD11	1.85	0.58

Continued on next page...

Continued from previous page...

Atom-1	Atom-2	Interatomic distance (Å)	Clash overlap (Å)
2:C:230:MET:HE3	2:C:234:ARG:HB3	1.85	0.57
1:B:855:ILE:HG22	1:B:876:MET:HE2	1.86	0.57
2:C:167:GLY:O	2:C:171:ILE:HG13	2.05	0.57
2:C:108:ARG:NH1	2:C:137:GLY:HA2	2.20	0.56
2:C:68:PHE:HB3	2:C:85:VAL:CG2	2.36	0.55
1:B:716:GLU:OE1	1:B:719:LYS:NZ	2.32	0.55
2:C:234:ARG:HG3	2:C:240:TYR:CD1	2.42	0.55
2:C:123:SER:HB3	2:C:126:ILE:HG12	1.88	0.55
2:C:170:SER:O	2:C:174:ILE:HG13	2.07	0.54
1:B:839:MET:HA	1:B:842:VAL:HG12	1.88	0.54
1:B:644:ASP:HB3	1:B:759:VAL:HG22	1.89	0.54
2:C:219:MET:HG2	2:C:223:PHE:HE1	1.73	0.54
2:C:99:ILE:CD1	2:C:139:ILE:HB	2.38	0.54
2:C:151:LEU:HA	2:C:154:VAL:HB	1.89	0.54
2:C:112:ILE:O	2:C:116:GLN:HG2	2.08	0.54
1:B:642:GLU:CD	1:B:681:HIS:HD1	2.11	0.53
2:C:63:LEU:O	2:C:64:LYS:HG2	2.08	0.53
1:B:622:GLY:HA3	3:B:901:ANP:O3G	2.08	0.53
1:B:769:LEU:HB2	2:C:224:VAL:HG13	1.90	0.53
2:C:50:LEU:HD11	2:C:124:PRO:HD3	1.89	0.53
2:C:94:MET:HE1	2:C:130:TYR:CG	2.44	0.53
2:C:101:LEU:HD21	2:C:219:MET:SD	2.49	0.53
2:C:108:ARG:HH12	2:C:137:GLY:HA2	1.73	0.52
1:B:629:ARG:NE	1:B:635:GLU:OE1	2.33	0.52
2:C:60:VAL:HG13	2:C:87:HIS:CE1	2.45	0.52
2:C:267:ASP:OD2	2:C:269:LYS:NZ	2.32	0.52
1:B:647:ASN:O	1:B:649:ASP:N	2.43	0.52
2:C:99:ILE:HD11	2:C:139:ILE:HB	1.90	0.52
2:C:214:GLN:NE2	2:C:218:SER:OG	2.42	0.52
1:B:645:GLY:O	1:B:647:ASN:N	2.36	0.51
1:B:811:TRP:CD2	1:B:855:ILE:HD11	2.45	0.51
2:C:105:PRO:O	2:C:108:ARG:HG2	2.10	0.51
1:B:700:ASP:HB3	1:B:703:THR:OG1	2.11	0.51
2:C:230:MET:HE2	2:C:235:LEU:HD23	1.91	0.51
1:B:711:ARG:O	1:B:715:GLN:HG3	2.11	0.50
2:C:103:ILE:HD13	2:C:107:ILE:HG13	1.93	0.50
2:C:226:THR:HG23	2:C:227:ARG:HG3	1.93	0.50
2:C:63:LEU:HD22	2:C:68:PHE:CZ	2.40	0.50
1:B:623:ARG:HG3	3:B:901:ANP:O1G	2.12	0.50
1:B:625:GLY:HA3	1:B:640:LEU:O	2.12	0.50
1:B:831:TRP:CZ2	2:C:318:VAL:HG11	2.47	0.49

Continued on next page...

Continued from previous page...

Atom-1	Atom-2	Interatomic distance (Å)	Clash overlap (Å)
2:C:53:PHE:O	2:C:57:LYS:HB2	2.11	0.49
1:B:776:LEU:HA	1:B:779:LEU:HD12	1.94	0.49
2:C:110:GLN:HG3	2:C:113:ARG:NH2	2.27	0.49
2:C:90:SER:O	2:C:92:LEU:N	2.46	0.49
1:B:610:PHE:HB2	1:B:632:TRP:CZ2	2.48	0.49
2:C:76:ALA:CB	2:C:81:VAL:HG12	2.43	0.49
2:C:99:ILE:HD13	2:C:101:LEU:HD23	1.94	0.49
2:C:47:ARG:NH1	2:C:48:LYS:HD3	2.28	0.49
1:B:623:ARG:NH1	3:B:901:ANP:O1G	2.46	0.48
2:C:80:GLY:HA3	2:C:99:ILE:HG22	1.94	0.48
2:C:127:VAL:CG2	5:C:402:EUI:I8	3.31	0.48
2:C:54:LEU:O	2:C:57:LYS:HB3	2.13	0.48
1:B:756:ILE:HG22	1:B:757:SER:H	1.79	0.48
1:B:801:ALA:O	1:B:804:VAL:HG22	2.13	0.48
2:C:363:ARG:O	2:C:367:GLU:HG3	2.13	0.48
1:B:643:MET:HG2	1:B:682:LEU:HD11	1.95	0.48
2:C:118:LEU:HD21	2:C:211:VAL:HG11	1.96	0.48
2:C:99:ILE:HD12	2:C:99:ILE:O	2.14	0.48
2:C:219:MET:HE2	2:C:223:PHE:HZ	1.79	0.48
2:C:82:VAL:HG12	2:C:97:LYS:HA	1.96	0.47
1:B:738:ASN:OD1	6:B:1001:HOH:O	2.20	0.47
2:C:188:HIS:CD2	2:C:209:PHE:HB3	2.50	0.47
1:B:654:PHE:O	1:B:658:VAL:HG22	2.15	0.47
2:C:150:SER:HA	2:C:196:ILE:O	2.15	0.47
5:C:402:EUI:H231	5:C:402:EUI:H302	1.63	0.47
1:B:645:GLY:O	1:B:646:HIS:CG	2.68	0.46
2:C:76:ALA:HB2	2:C:81:VAL:HG12	1.98	0.46
2:C:198:VAL:HG12	2:C:204:ILE:HD13	1.96	0.46
2:C:375:LEU:O	2:C:379:ILE:HG13	2.16	0.46
2:C:97:LYS:O	2:C:140:SER:HA	2.16	0.45
1:B:807:PHE:HA	1:B:810:VAL:HG12	1.97	0.45
5:C:402:EUI:H4	5:C:402:EUI:F16	2.07	0.45
1:B:603:LEU:HD12	1:B:606:TRP:HD1	1.81	0.45
2:C:57:LYS:HE3	2:C:129:PHE:O	2.17	0.44
2:C:100:HIS:C	2:C:101:LEU:HD22	2.37	0.44
1:B:706:ASP:O	1:B:710:THR:HG23	2.18	0.44
2:C:156:LYS:HA	2:C:156:LYS:HD2	1.74	0.44
2:C:150:SER:HB3	3:C:401:ANP:O2'	2.18	0.43
5:C:402:EUI:H4	5:C:402:EUI:C11	2.48	0.43
2:C:268:ALA:HA	2:C:271:LEU:HD12	2.00	0.43
2:C:147:ASP:N	2:C:147:ASP:OD2	2.52	0.43

Continued on next page...

Continued from previous page...

Atom-1	Atom-2	Interatomic distance (Å)	Clash overlap (Å)
2:C:112:ILE:HD11	2:C:139:ILE:HG12	2.00	0.43
1:B:643:MET:CE	1:B:650:HIS:HB3	2.49	0.43
1:B:831:TRP:HE1	2:C:315:ASP:HA	1.83	0.43
2:C:166:LEU:O	2:C:170:SER:OG	2.22	0.43
2:C:263:ILE:HG23	2:C:323:PRO:HG3	2.00	0.43
2:C:199:ASN:ND2	2:C:203:GLU:OE1	2.46	0.43
2:C:216:ILE:HA	2:C:220:ALA:HB3	2.01	0.43
2:C:183:LYS:HG2	2:C:184:HIS:CD2	2.54	0.43
2:C:321:PRO:HA	2:C:322:PRO:HD3	1.87	0.43
1:B:880:LEU:HB2	1:B:881:PRO:HD2	2.02	0.42
2:C:96:ARG:HE	2:C:140:SER:HB2	1.85	0.42
2:C:60:VAL:HG22	2:C:90:SER:OG	2.19	0.41
1:B:651:LEU:HD12	1:B:651:LEU:H	1.86	0.41
2:C:64:LYS:HD3	2:C:64:LYS:HA	1.77	0.41
2:C:136:ASP:CG	2:C:136:ASP:O	2.59	0.41
2:C:53:PHE:HE1	2:C:130:TYR:CE1	2.37	0.41
2:C:128:GLY:HA3	2:C:144:GLU:HG3	2.02	0.41
2:C:50:LEU:HD11	2:C:124:PRO:CD	2.51	0.41
2:C:50:LEU:HD23	2:C:50:LEU:HA	1.92	0.41
1:B:639:ARG:NH2	1:B:750:ASP:OD1	2.51	0.41
2:C:82:VAL:HA	2:C:96:ARG:O	2.21	0.41
1:B:603:LEU:HA	1:B:606:TRP:CD1	2.56	0.41
1:B:784:VAL:HG11	1:B:833:ILE:HG21	2.03	0.41
2:C:146:MET:HG2	2:C:197:LEU:HB3	2.02	0.40

There are no symmetry-related clashes.

5.3 Torsion angles [\(i\)](#)

5.3.1 Protein backbone [\(i\)](#)

In the following table, the Percentiles column shows the percent Ramachandran outliers of the chain as a percentile score with respect to all X-ray entries followed by that with respect to entries of similar resolution.

The Analysed column shows the number of residues for which the backbone conformation was analysed, and the total number of residues.

Mol	Chain	Analysed	Favoured	Allowed	Outliers	Percentiles
1	B	270/334 (81%)	251 (93%)	19 (7%)	0	100 100

Continued on next page...

Continued from previous page...

Mol	Chain	Analysed	Favoured	Allowed	Outliers	Percentiles	
2	C	307/384 (80%)	294 (96%)	12 (4%)	1 (0%)	41	73
All	All	577/718 (80%)	545 (94%)	31 (5%)	1 (0%)	47	79

All (1) Ramachandran outliers are listed below:

Mol	Chain	Res	Type
2	C	91	GLY

5.3.2 Protein sidechains [i](#)

In the following table, the Percentiles column shows the percent sidechain outliers of the chain as a percentile score with respect to all X-ray entries followed by that with respect to entries of similar resolution.

The Analysed column shows the number of residues for which the sidechain conformation was analysed, and the total number of residues.

Mol	Chain	Analysed	Rotameric	Outliers	Percentiles	
1	B	238/291 (82%)	232 (98%)	6 (2%)	47	75
2	C	271/333 (81%)	267 (98%)	4 (2%)	65	85
All	All	509/624 (82%)	499 (98%)	10 (2%)	55	80

All (10) residues with a non-rotameric sidechain are listed below:

Mol	Chain	Res	Type
1	B	604	GLN
1	B	649	ASP
1	B	676	CYS
1	B	704	SER
1	B	753	LEU
1	B	772	SER
2	C	53	PHE
2	C	108	ARG
2	C	183	LYS
2	C	269	LYS

Sometimes sidechains can be flipped to improve hydrogen bonding and reduce clashes. All (1) such sidechains are listed below:

Mol	Chain	Res	Type
2	C	214	GLN

5.3.3 RNA [i](#)

There are no RNA molecules in this entry.

5.4 Non-standard residues in protein, DNA, RNA chains [i](#)

There are no non-standard protein/DNA/RNA residues in this entry.

5.5 Carbohydrates [i](#)

There are no monosaccharides in this entry.

5.6 Ligand geometry [i](#)

Of 5 ligands modelled in this entry, 2 are monoatomic - leaving 3 for Mogul analysis.

In the following table, the Counts columns list the number of bonds (or angles) for which Mogul statistics could be retrieved, the number of bonds (or angles) that are observed in the model and the number of bonds (or angles) that are defined in the Chemical Component Dictionary. The Link column lists molecule types, if any, to which the group is linked. The Z score for a bond length (or angle) is the number of standard deviations the observed value is removed from the expected value. A bond length (or angle) with $|Z| > 2$ is considered an outlier worth inspection. RMSZ is the root-mean-square of all Z scores of the bond lengths (or angles).

Mol	Type	Chain	Res	Link	Bond lengths			Bond angles		
					Counts	RMSZ	# $ Z > 2$	Counts	RMSZ	# $ Z > 2$
3	ANP	B	901	4	29,33,33	1.02	3 (10%)	31,52,52	0.97	2 (6%)
5	EUI	C	402	-	30,33,33	1.49	4 (13%)	37,49,49	1.77	8 (21%)
3	ANP	C	401	4	29,33,33	1.04	4 (13%)	31,52,52	1.21	3 (9%)

In the following table, the Chirals column lists the number of chiral outliers, the number of chiral centers analysed, the number of these observed in the model and the number defined in the Chemical Component Dictionary. Similar counts are reported in the Torsion and Rings columns. '-' means no outliers of that kind were identified.

Mol	Type	Chain	Res	Link	Chirals	Torsions	Rings
3	ANP	B	901	4	-	8/14/38/38	0/3/3/3
5	EUI	C	402	-	-	0/12/36/36	0/4/4/4

Continued on next page...

Continued from previous page...

Mol	Type	Chain	Res	Link	Chirals	Torsions	Rings
3	ANP	C	401	4	-	4/14/38/38	0/3/3/3

All (11) bond length outliers are listed below:

Mol	Chain	Res	Type	Atoms	Z	Observed(Å)	Ideal(Å)
5	C	402	EUI	C18-N19	4.72	1.45	1.34
5	C	402	EUI	C5-N9	2.88	1.47	1.39
5	C	402	EUI	O24-C22	-2.56	1.40	1.44
3	C	401	ANP	PG-N3B	2.37	1.69	1.63
3	B	901	ANP	PG-N3B	2.37	1.69	1.63
3	B	901	ANP	PB-O1B	2.27	1.49	1.46
3	C	401	ANP	PB-O1B	2.26	1.49	1.46
5	C	402	EUI	C15-C18	2.17	1.53	1.50
3	C	401	ANP	PB-O3A	-2.15	1.56	1.59
3	C	401	ANP	PG-O1G	2.01	1.49	1.46
3	B	901	ANP	PG-O1G	2.00	1.49	1.46

All (13) bond angle outliers are listed below:

Mol	Chain	Res	Type	Atoms	Z	Observed(°)	Ideal(°)
5	C	402	EUI	C21-N19-C23	-5.47	89.43	95.19
3	C	401	ANP	PB-O3A-PA	-3.81	119.20	132.62
5	C	402	EUI	C15-C10-C11	3.45	119.95	117.04
5	C	402	EUI	C28-C29-C30	3.26	118.07	111.42
5	C	402	EUI	C1-C2-I8	3.15	123.39	119.37
3	C	401	ANP	C5-C6-N6	2.59	124.29	120.35
5	C	402	EUI	C1-C6-C5	-2.58	121.04	123.50
3	B	901	ANP	PB-O3A-PA	-2.53	123.71	132.62
5	C	402	EUI	C3-C2-C1	-2.52	118.12	121.09
5	C	402	EUI	C15-C10-N9	-2.44	116.05	120.14
5	C	402	EUI	O20-C18-N19	-2.27	118.58	122.34
3	C	401	ANP	O2G-PG-O1G	-2.22	107.88	113.45
3	B	901	ANP	O3G-PG-O1G	-2.21	107.89	113.45

There are no chirality outliers.

All (12) torsion outliers are listed below:

Mol	Chain	Res	Type	Atoms
3	B	901	ANP	PG-N3B-PB-O1B
3	B	901	ANP	PA-O3A-PB-O1B
3	B	901	ANP	PA-O3A-PB-O2B

Continued on next page...

Continued from previous page...

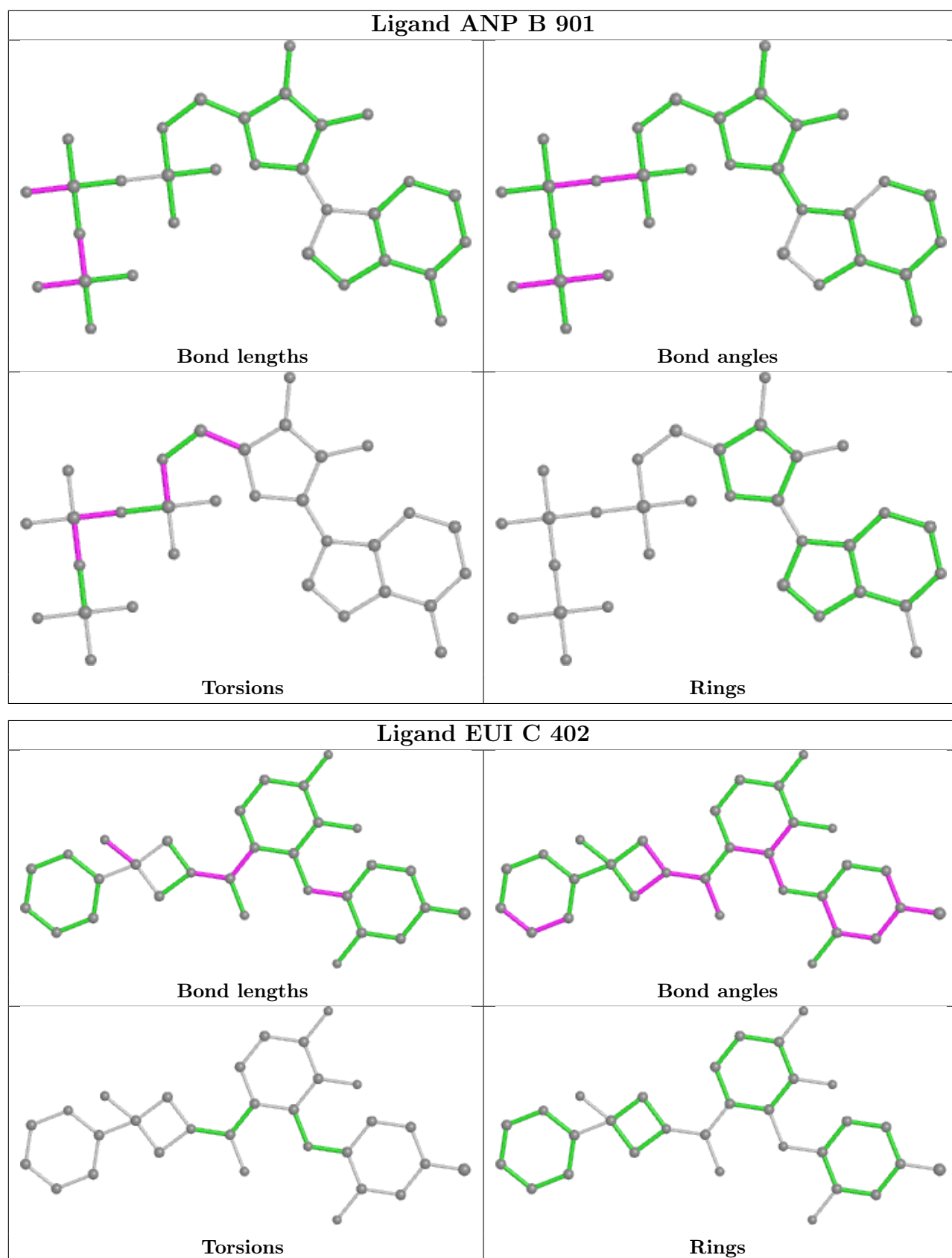
Mol	Chain	Res	Type	Atoms
3	B	901	ANP	C5'-O5'-PA-O2A
3	C	401	ANP	PB-N3B-PG-O1G
3	C	401	ANP	PG-N3B-PB-O1B
3	C	401	ANP	PA-O3A-PB-O1B
3	B	901	ANP	C3'-C4'-C5'-O5'
3	B	901	ANP	O4'-C4'-C5'-O5'
3	B	901	ANP	C5'-O5'-PA-O3A
3	B	901	ANP	C5'-O5'-PA-O1A
3	C	401	ANP	PA-O3A-PB-O2B

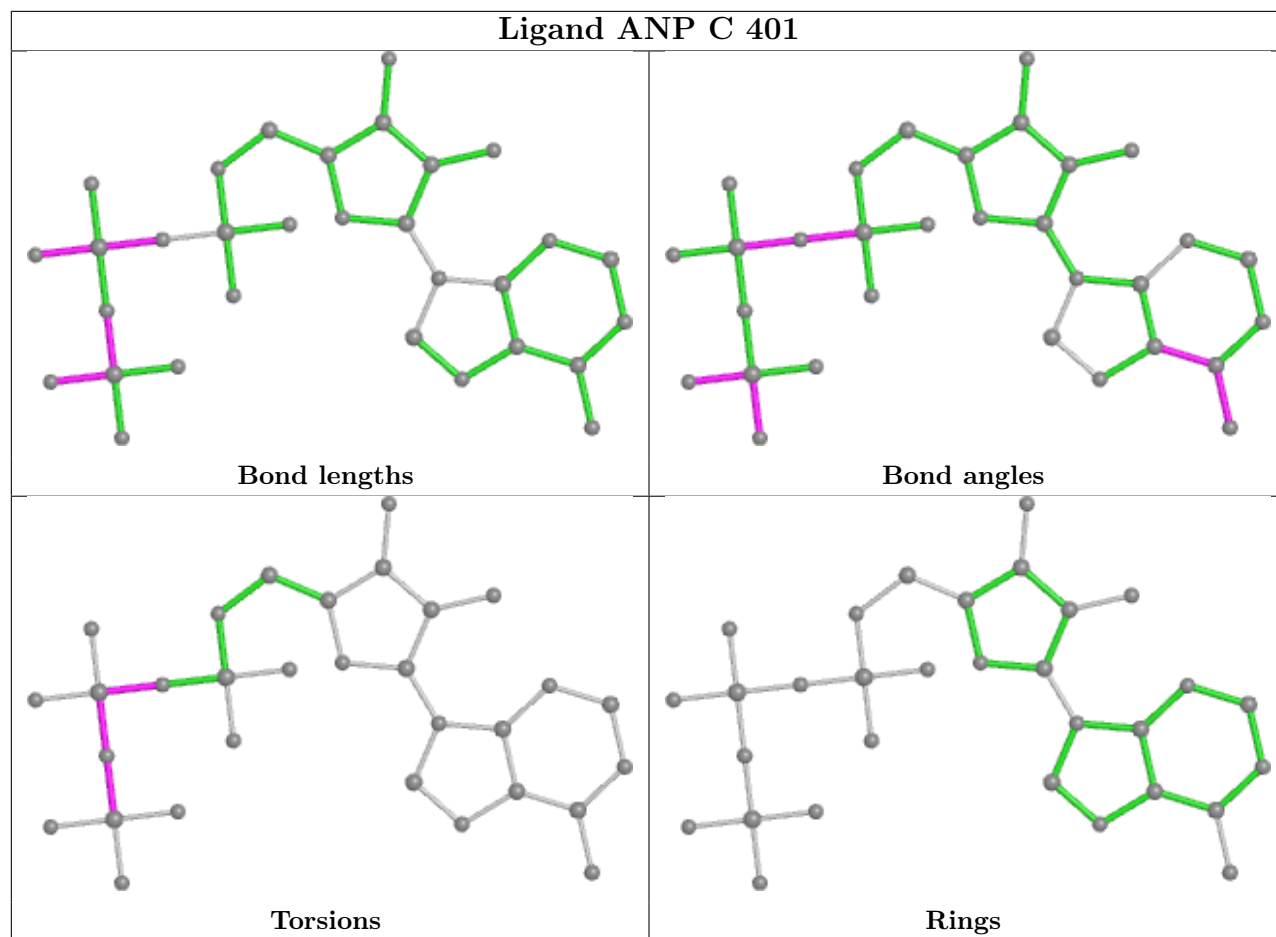
There are no ring outliers.

3 monomers are involved in 10 short contacts:

Mol	Chain	Res	Type	Clashes	Symm-Clashes
3	B	901	ANP	3	0
5	C	402	EUI	6	0
3	C	401	ANP	1	0

The following is a two-dimensional graphical depiction of Mogul quality analysis of bond lengths, bond angles, torsion angles, and ring geometry for all instances of the Ligand of Interest. In addition, ligands with molecular weight > 250 and outliers as shown on the validation Tables will also be included. For torsion angles, if less than 5% of the Mogul distribution of torsion angles is within 10 degrees of the torsion angle in question, then that torsion angle is considered an outlier. Any bond that is central to one or more torsion angles identified as an outlier by Mogul will be highlighted in the graph. For rings, the root-mean-square deviation (RMSD) between the ring in question and similar rings identified by Mogul is calculated over all ring torsion angles. If the average RMSD is greater than 60 degrees and the minimal RMSD between the ring in question and any Mogul-identified rings is also greater than 60 degrees, then that ring is considered an outlier. The outliers are highlighted in purple. The color gray indicates Mogul did not find sufficient equivalents in the CSD to analyse the geometry.





5.7 Other polymers [i](#)

There are no such residues in this entry.

5.8 Polymer linkage issues [i](#)

The following chains have linkage breaks:

Mol	Chain	Number of breaks
1	B	1

All chain breaks are listed below:

Model	Chain	Residue-1	Atom-1	Residue-2	Atom-2	Distance (Å)
1	B	632:TRP	C	633:HIS	N	5.18

6 Fit of model and data [i](#)

6.1 Protein, DNA and RNA chains [i](#)

In the following table, the column labelled ‘#RSRZ> 2’ contains the number (and percentage) of RSRZ outliers, followed by percent RSRZ outliers for the chain as percentile scores relative to all X-ray entries and entries of similar resolution. The OWAB column contains the minimum, median, 95th percentile and maximum values of the occupancy-weighted average B-factor per residue. The column labelled ‘Q< 0.9’ lists the number of (and percentage) of residues with an average occupancy less than 0.9.

Mol	Chain	Analysed	<RSRZ>	#RSRZ>2	OWAB(Å ²)	Q<0.9
1	B	276/334 (82%)	-0.12	1 (0%) 92 84	71, 98, 135, 178	0
2	C	311/384 (80%)	0.15	6 (1%) 66 46	79, 131, 169, 183	0
All	All	587/718 (81%)	0.02	7 (1%) 79 61	71, 113, 165, 183	0

All (7) RSRZ outliers are listed below:

Mol	Chain	Res	Type	RSRZ
2	C	93	VAL	3.4
2	C	133	PHE	2.7
2	C	134	TYR	2.4
2	C	40	LEU	2.3
2	C	53	PHE	2.3
2	C	142	CYS	2.0
1	B	602	TYR	2.0

6.2 Non-standard residues in protein, DNA, RNA chains [i](#)

There are no non-standard protein/DNA/RNA residues in this entry.

6.3 Carbohydrates [i](#)

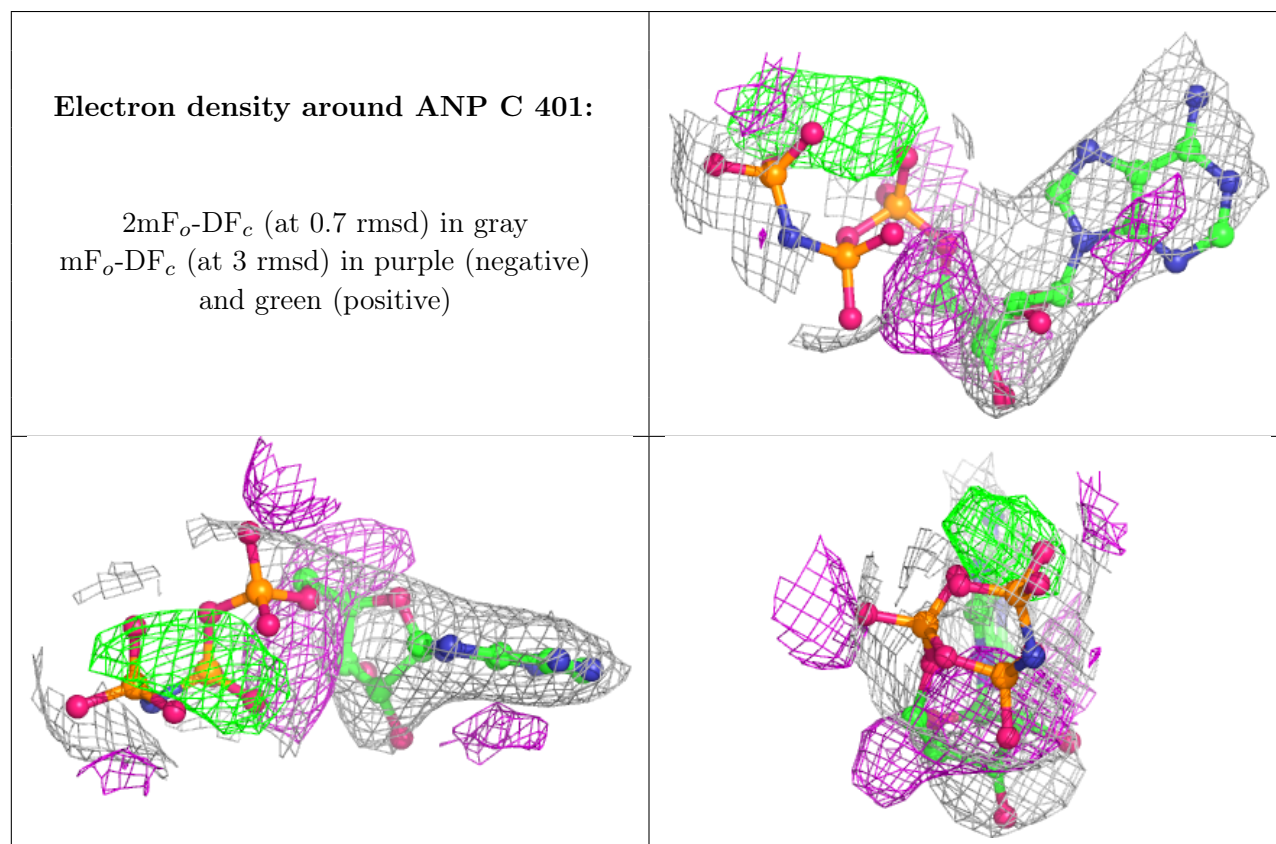
There are no monosaccharides in this entry.

6.4 Ligands [i](#)

In the following table, the Atoms column lists the number of modelled atoms in the group and the number defined in the chemical component dictionary. The B-factors column lists the minimum, median, 95th percentile and maximum values of B factors of atoms in the group. The column labelled ‘Q< 0.9’ lists the number of atoms with occupancy less than 0.9.

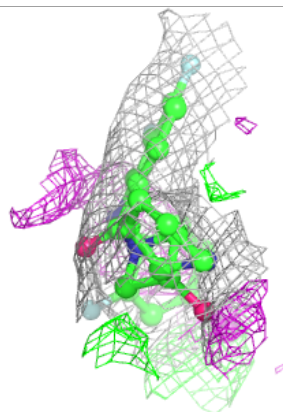
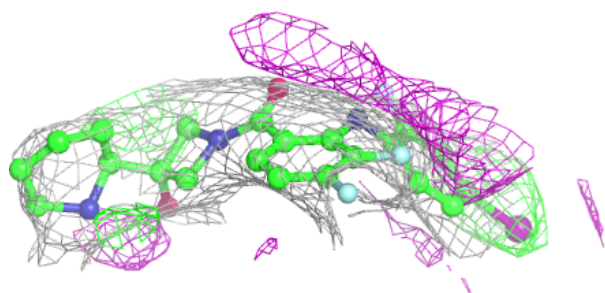
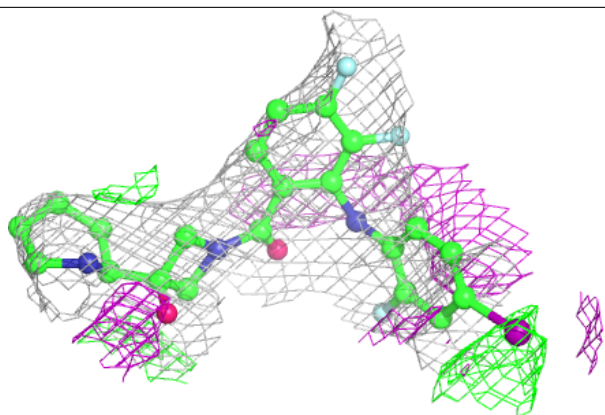
Mol	Type	Chain	Res	Atoms	RSCC	RSR	B-factors(\AA^2)	Q<0.9
3	ANP	C	401	31/31	0.84	0.30	120,135,147,149	0
5	EUI	C	402	30/30	0.85	0.31	117,125,146,192	0
3	ANP	B	901	31/31	0.92	0.20	86,103,131,135	0
4	MG	B	902	1/1	0.93	0.17	99,99,99,99	0
4	MG	C	403	1/1	0.95	0.38	122,122,122,122	0

The following is a graphical depiction of the model fit to experimental electron density of all instances of the Ligand of Interest. In addition, ligands with molecular weight > 250 and outliers as shown on the geometry validation Tables will also be included. Each fit is shown from different orientation to approximate a three-dimensional view.

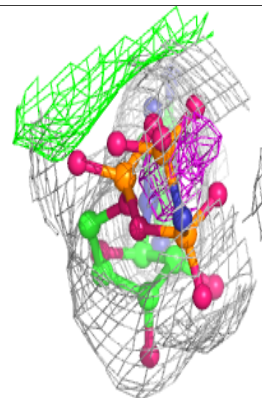
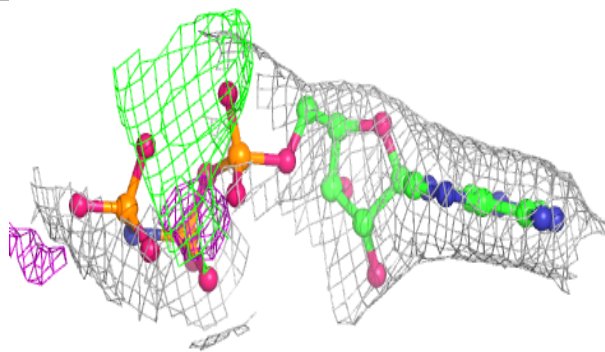
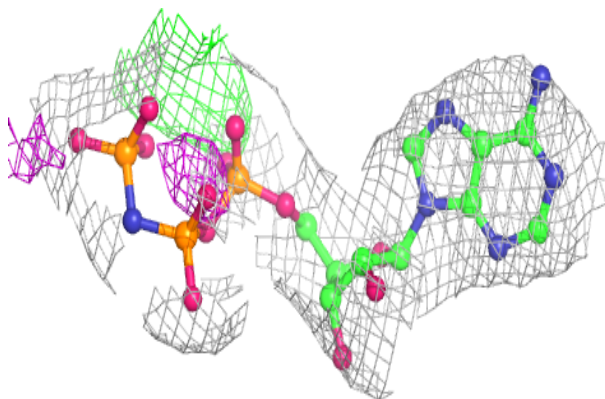


Electron density around EUI C 402:

$2mF_o-DF_c$ (at 0.7 rmsd) in gray
 mF_o-DF_c (at 3 rmsd) in purple (negative)
and green (positive)

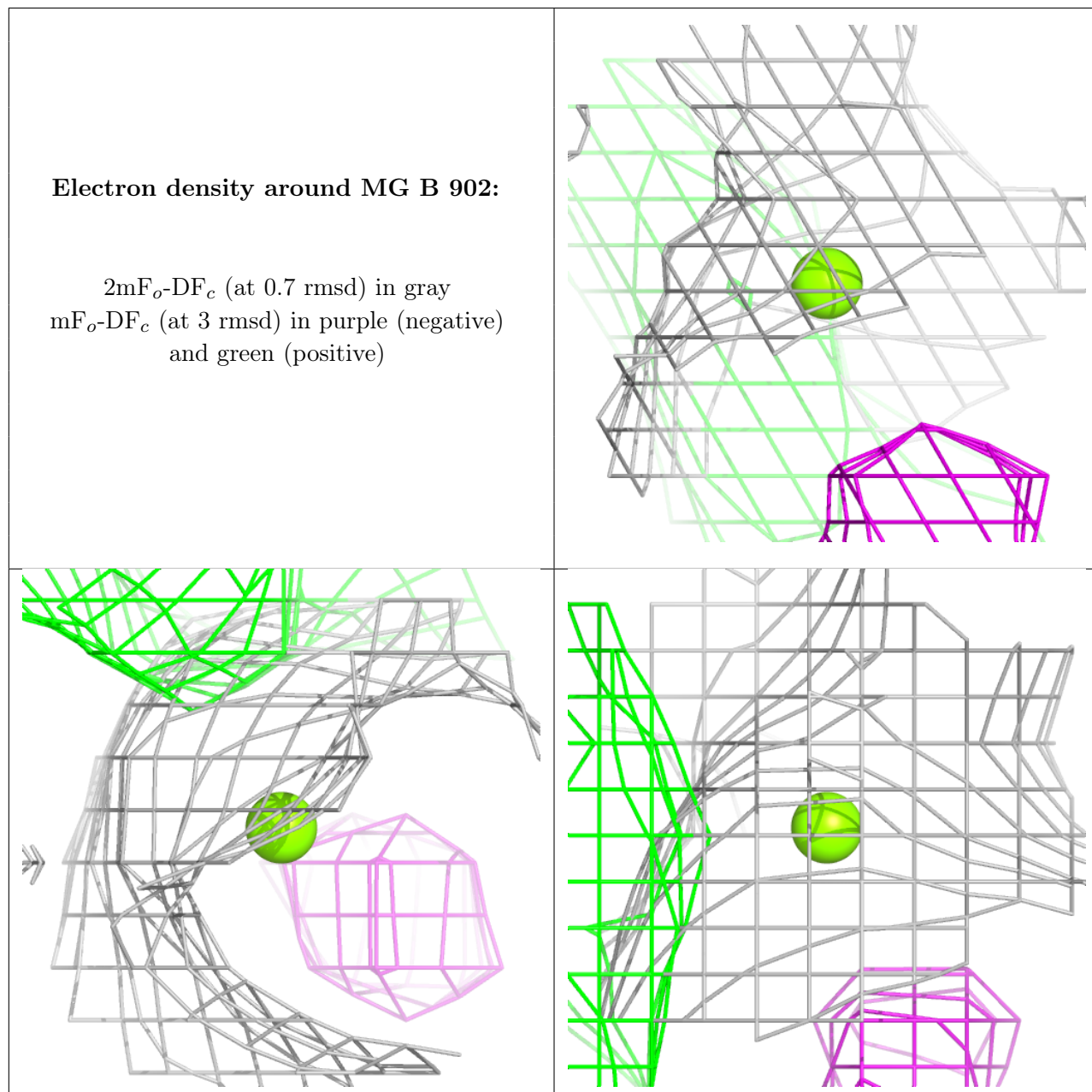
**Electron density around ANP B 901:**

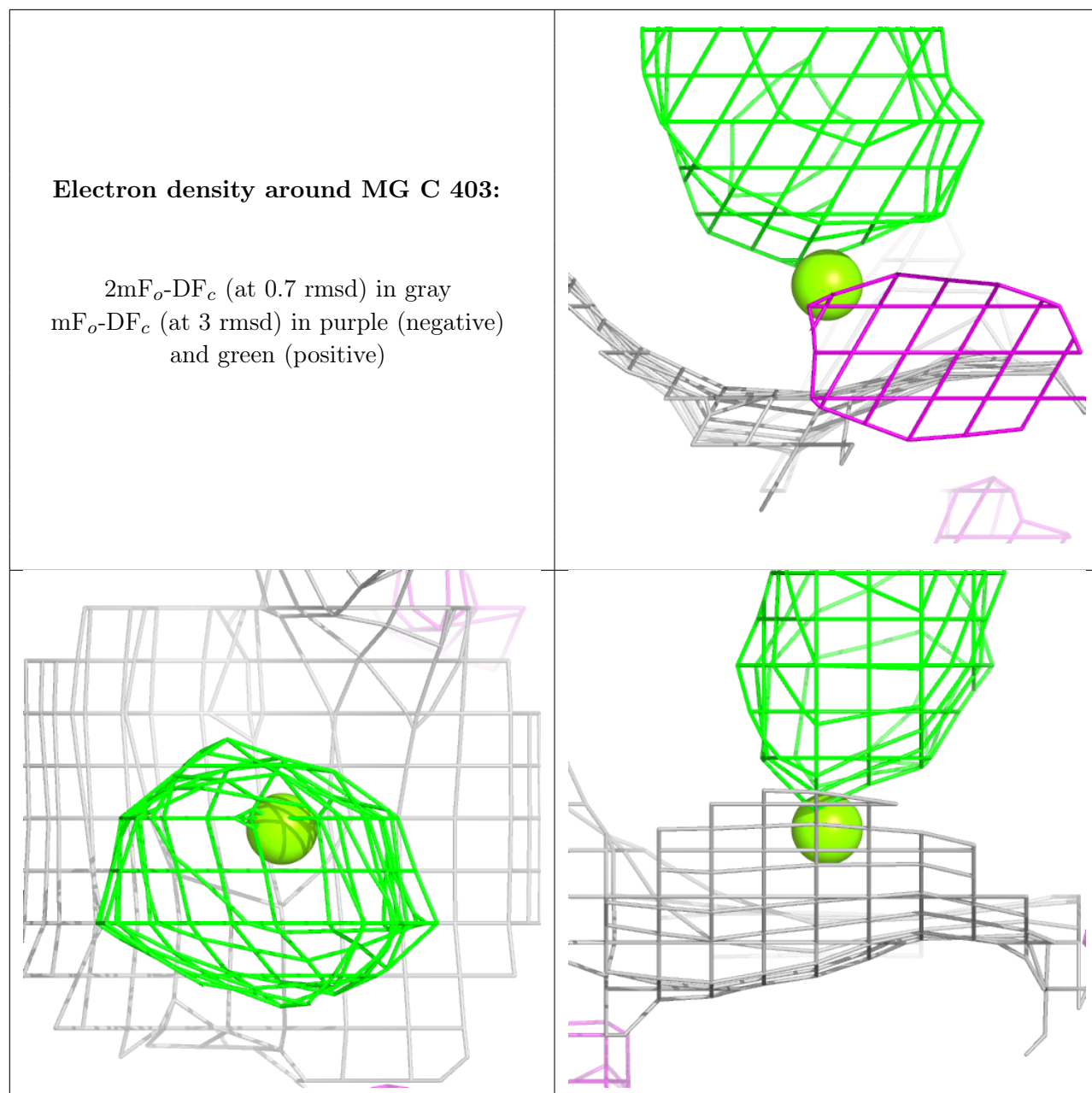
$2mF_o-DF_c$ (at 0.7 rmsd) in gray
 mF_o-DF_c (at 3 rmsd) in purple (negative)
and green (positive)



Electron density around MG B 902:

$2mF_o-DF_c$ (at 0.7 rmsd) in gray
 mF_o-DF_c (at 3 rmsd) in purple (negative)
and green (positive)





6.5 Other polymers [i](#)

There are no such residues in this entry.