



wwPDB X-ray Structure Validation Summary Report ⓘ

Feb 7, 2023 – 04:43 PM EST

PDB ID : 7FSU
Title : SDCBP PanDDA analysis group deposition – The PDZ domains of SDCBP in complex with Z729726784
Authors : Bradshaw, W.J.; Katis, V.L.; Bountra, C.; von Delft, F.; Brennan, P.E.
Deposited on : 2023-01-24
Resolution : 1.97 Å(reported)

This is a wwPDB X-ray Structure Validation Summary Report for a publicly released PDB entry.

We welcome your comments at validation@mail.wwpdb.org

A user guide is available at

<https://www.wwpdb.org/validation/2017/XrayValidationReportHelp>

with specific help available everywhere you see the ⓘ symbol.

The types of validation reports are described at

<http://www.wwpdb.org/validation/2017/FAQs#types>.

The following versions of software and data (see [references ⓘ](#)) were used in the production of this report:

MolProbity : 4.02b-467
Mogul : 1.8.5 (274361), CSD as541be (2020)
Xtriage (Phenix) : 1.13
EDS : 2.32.1
buster-report : 1.1.7 (2018)
Percentile statistics : 20191225.v01 (using entries in the PDB archive December 25th 2019)
Refmac : 5.8.0158
CCP4 : 7.0.044 (Gargrove)
Ideal geometry (proteins) : Engh & Huber (2001)
Ideal geometry (DNA, RNA) : Parkinson et al. (1996)
Validation Pipeline (wwPDB-VP) : 2.32.1

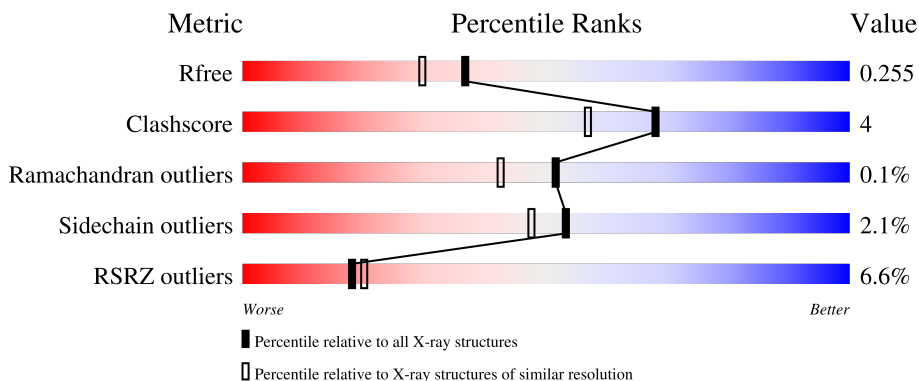
1 Overall quality at a glance

The following experimental techniques were used to determine the structure:

X-RAY DIFFRACTION

The reported resolution of this entry is 1.97 Å.

Percentile scores (ranging between 0-100) for global validation metrics of the entry are shown in the following graphic. The table shows the number of entries on which the scores are based.



Metric	Whole archive (#Entries)	Similar resolution (#Entries, resolution range(Å))
R_{free}	130704	11647 (2.00-1.96)
Clashscore	141614	1014 (1.98-1.98)
Ramachandran outliers	138981	1006 (1.98-1.98)
Sidechain outliers	138945	1006 (1.98-1.98)
RSRZ outliers	127900	11410 (2.00-1.96)

The table below summarises the geometric issues observed across the polymeric chains and their fit to the electron density. The red, orange, yellow and green segments of the lower bar indicate the fraction of residues that contain outliers for ≥ 3 , 2, 1 and 0 types of geometric quality criteria respectively. A grey segment represents the fraction of residues that are not modelled. The numeric value for each fraction is indicated below the corresponding segment, with a dot representing fractions $\leq 5\%$. The upper red bar (where present) indicates the fraction of residues that have poor fit to the electron density. The numeric value is given above the bar.

Mol	Chain	Length	Quality of chain
1	A	195	 11% 88% 10%
1	B	195	 6% 87% 11%
1	C	195	 7% 88% 10%
1	D	195	 3% 88% 10%

The following table lists non-polymeric compounds, carbohydrate monomers and non-standard

residues in protein, DNA, RNA chains that are outliers for geometric or electron-density-fit criteria:

Mol	Type	Chain	Res	Chirality	Geometry	Clashes	Electron density
6	SO4	D	304	-	-	-	X

2 Entry composition [i](#)

There are 8 unique types of molecules in this entry. The entry contains 6424 atoms, of which 0 are hydrogens and 0 are deuteriums.

In the tables below, the ZeroOcc column contains the number of atoms modelled with zero occupancy, the AltConf column contains the number of residues with at least one atom in alternate conformation and the Trace column contains the number of residues modelled with at most 2 atoms.

- Molecule 1 is a protein called Syntenin-1.

Mol	Chain	Residues	Atoms					ZeroOcc	AltConf	Trace
			Total	C	N	O	S			
1	A	191	1481	935	262	275	9	0	1	0
1	B	193	1495	943	264	279	9	0	1	0
1	C	193	1514	953	270	282	9	0	3	0
1	D	191	1489	939	263	278	9	0	2	0

There are 8 discrepancies between the modelled and reference sequences:

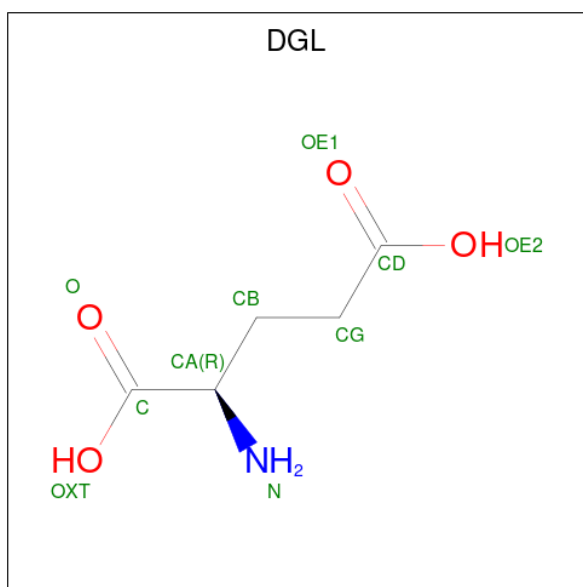
Chain	Residue	Modelled	Actual	Comment	Reference
A	104	SER	-	expression tag	UNP O00560
A	105	MET	-	expression tag	UNP O00560
B	104	SER	-	expression tag	UNP O00560
B	105	MET	-	expression tag	UNP O00560
C	104	SER	-	expression tag	UNP O00560
C	105	MET	-	expression tag	UNP O00560
D	104	SER	-	expression tag	UNP O00560
D	105	MET	-	expression tag	UNP O00560

- Molecule 2 is 1,2-ETHANEDIOL (three-letter code: EDO) (formula: C₂H₆O₂).



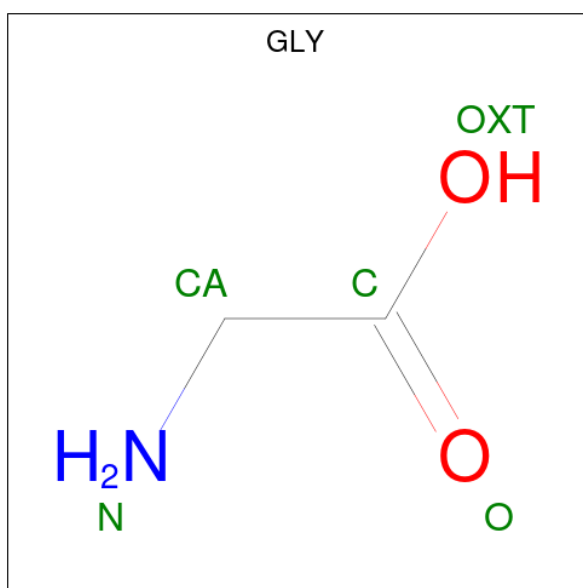
Mol	Chain	Residues	Atoms	ZeroOcc	AltConf
2	A	1	Total C O 4 2 2	0	0
2	B	1	Total C O 4 2 2	0	0
2	B	1	Total C O 4 2 2	0	0
2	C	1	Total C O 4 2 2	0	0
2	C	1	Total C O 4 2 2	0	0
2	C	1	Total C O 4 2 2	0	0
2	D	1	Total C O 4 2 2	0	0
2	D	1	Total C O 4 2 2	0	0

- Molecule 3 is D-GLUTAMIC ACID (three-letter code: DGL) (formula: C₅H₉NO₄).



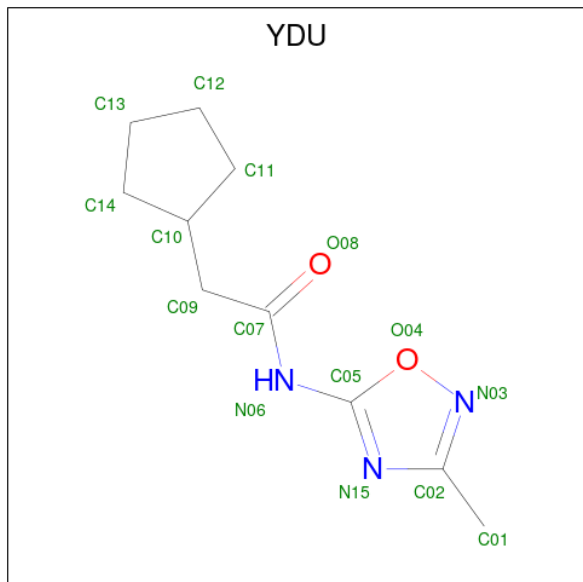
Mol	Chain	Residues	Atoms				ZeroOcc	AltConf
			Total	C	N	O		
3	B	1	10	5	1	4	0	0
3	D	1	10	5	1	4	0	0

- Molecule 4 is GLYCINE (three-letter code: GLY) (formula: $C_2H_5NO_2$).



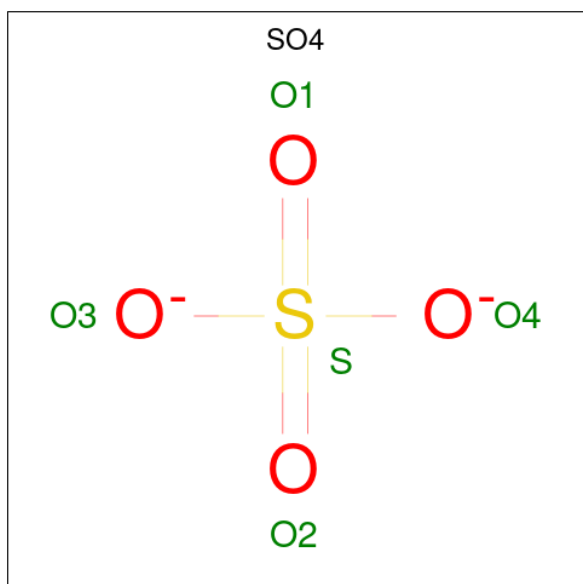
Mol	Chain	Residues	Atoms				ZeroOcc	AltConf
			Total	C	N	O		
4	C	1	5	2	1	2	0	0
4	D	1	5	2	1	2	0	0

- Molecule 5 is 2-cyclopentyl-N-(3-methyl-1,2,4-oxadiazol-5-yl)acetamide (three-letter code: YDU) (formula: $C_{10}H_{15}N_3O_2$) (labeled as "Ligand of Interest" by depositor).



Mol	Chain	Residues	Atoms				ZeroOcc	AltConf
			Total	C	N	O		
5	D	1	15	10	3	2	0	0

- Molecule 6 is SULFATE ION (three-letter code: SO4) (formula: O_4S).



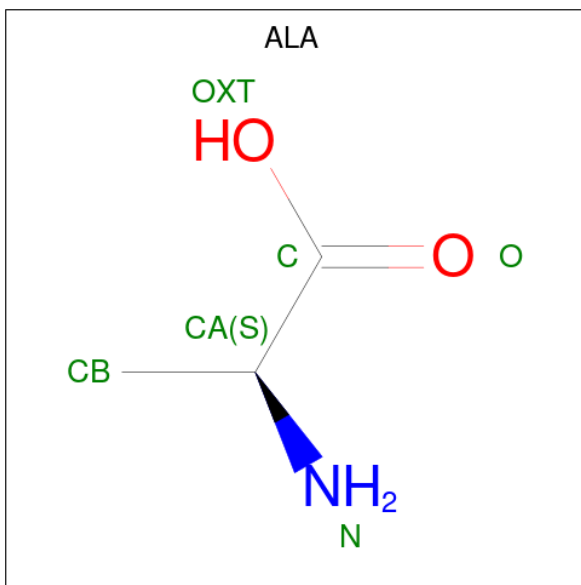
Mol	Chain	Residues	Atoms			ZeroOcc	AltConf
			Total	O	S		
6	D	1	5	4	1	0	0

Continued on next page...

Continued from previous page...

Mol	Chain	Residues	Atoms			ZeroOcc	AltConf
6	D	1	Total	O	S	0	0
			5	4	1		
6	D	1	Total	O	S	0	0
			5	4	1		

- Molecule 7 is ALANINE (three-letter code: ALA) (formula: C₃H₇NO₂).



Mol	Chain	Residues	Atoms				ZeroOcc	AltConf
7	D	1	Total	C	N	O	0	0
			6	3	1	2		

- Molecule 8 is water.

Mol	Chain	Residues	Atoms		ZeroOcc	AltConf
8	A	46	Total	O	0	0
			46	46		
8	B	105	Total	O	0	1
			105	105		
8	C	73	Total	O	0	1
			74	74		
8	D	121	Total	O	0	2
			122	122		

4 Data and refinement statistics

Property	Value	Source
Space group	P 1 21 1	Depositor
Cell constants a, b, c, α , β , γ	80.95Å 49.45Å 114.74Å 90.00° 94.96° 90.00°	Depositor
Resolution (Å)	114.30 – 1.97 114.31 – 1.97	Depositor EDS
% Data completeness (in resolution range)	99.7 (114.30-1.97) 99.7 (114.31-1.97)	Depositor EDS
R_{merge}	0.12	Depositor
R_{sym}	(Not available)	Depositor
$\langle I/\sigma(I) \rangle$ ¹	1.19 (at 1.97Å)	Xtrriage
Refinement program	REFMAC 5.8.0267	Depositor
R, R_{free}	0.200 , 0.248 0.215 , 0.255	Depositor DCC
R_{free} test set	3118 reflections (4.86%)	wwPDB-VP
Wilson B-factor (Å ²)	35.3	Xtrriage
Anisotropy	0.159	Xtrriage
Bulk solvent k_{sol} (e/Å ³), B_{sol} (Å ²)	0.32 , 39.8	EDS
L-test for twinning ²	$\langle L \rangle = 0.49$, $\langle L^2 \rangle = 0.33$	Xtrriage
Estimated twinning fraction	No twinning to report.	Xtrriage
F_o, F_c correlation	0.95	EDS
Total number of atoms	6424	wwPDB-VP
Average B, all atoms (Å ²)	45.0	wwPDB-VP

Xtrriage's analysis on translational NCS is as follows: *The analyses of the Patterson function reveals a significant off-origin peak that is 23.81 % of the origin peak, indicating pseudo-translational symmetry. The chance of finding a peak of this or larger height randomly in a structure without pseudo-translational symmetry is equal to 4.3314e-03. The detected translational NCS is most likely also responsible for the elevated intensity ratio.*

¹Intensities estimated from amplitudes.

²Theoretical values of $\langle |L| \rangle$, $\langle L^2 \rangle$ for acentric reflections are 0.5, 0.333 respectively for untwinned datasets, and 0.375, 0.2 for perfectly twinned datasets.

5 Model quality [i](#)

5.1 Standard geometry [i](#)

Bond lengths and bond angles in the following residue types are not validated in this section: YDU, EDO, SO4, DGL

The Z score for a bond length (or angle) is the number of standard deviations the observed value is removed from the expected value. A bond length (or angle) with $|Z| > 5$ is considered an outlier worth inspection. RMSZ is the root-mean-square of all Z scores of the bond lengths (or angles).

Mol	Chain	Bond lengths		Bond angles	
		RMSZ	# Z >5	RMSZ	# Z >5
1	A	0.77	0/1502	0.98	1/2019 (0.0%)
1	B	0.83	0/1516	1.00	2/2038 (0.1%)
1	C	0.83	0/1535	0.98	1/2063 (0.0%)
1	D	0.90	1/1510 (0.1%)	1.04	0/2030
All	All	0.83	1/6063 (0.0%)	1.00	4/8150 (0.0%)

Chiral center outliers are detected by calculating the chiral volume of a chiral center and verifying if the center is modelled as a planar moiety or with the opposite hand. A planarity outlier is detected by checking planarity of atoms in a peptide group, atoms in a mainchain group or atoms of a sidechain that are expected to be planar.

Mol	Chain	#Chirality outliers	#Planarity outliers
1	C	0	1
1	D	0	1
All	All	0	2

All (1) bond length outliers are listed below:

Mol	Chain	Res	Type	Atoms	Z	Observed(Å)	Ideal(Å)
1	D	190	ILE	C-O	5.09	1.33	1.23

All (4) bond angle outliers are listed below:

Mol	Chain	Res	Type	Atoms	Z	Observed(°)	Ideal(°)
1	A	197	ARG	NE-CZ-NH2	-6.56	117.02	120.30
1	B	198	THR	CA-CB-OG1	-6.28	95.82	109.00
1	B	294	THR	CB-CA-C	-5.74	96.10	111.60
1	C	198	THR	CA-CB-OG1	-5.53	97.39	109.00

There are no chirality outliers.

All (2) planarity outliers are listed below:

Mol	Chain	Res	Type	Group
1	C	183	GLY	Peptide
1	D	111	GLY	Peptide

5.2 Too-close contacts [i](#)

In the following table, the Non-H and H(model) columns list the number of non-hydrogen atoms and hydrogen atoms in the chain respectively. The H(added) column lists the number of hydrogen atoms added and optimized by MolProbity. The Clashes column lists the number of clashes within the asymmetric unit, whereas Symm-Clashes lists symmetry-related clashes.

Mol	Chain	Non-H	H(model)	H(added)	Clashes	Symm-Clashes
1	A	1481	0	1530	11	0
1	B	1495	0	1541	12	0
1	C	1514	0	1558	15	0
1	D	1489	0	1533	11	0
2	A	4	0	6	0	0
2	B	8	0	12	0	0
2	C	12	0	18	0	0
2	D	8	0	12	0	0
3	B	10	0	7	0	0
3	D	10	0	7	0	0
4	C	5	0	2	0	0
4	D	5	0	2	0	0
5	D	15	0	0	0	0
6	D	15	0	0	0	0
7	D	6	0	4	0	0
8	A	46	0	0	1	0
8	B	105	0	0	2	0
8	C	74	0	0	0	0
8	D	122	0	0	3	0
All	All	6424	0	6232	47	0

The all-atom clashscore is defined as the number of clashes found per 1000 atoms (including hydrogen atoms). The all-atom clashscore for this structure is 4.

The worst 5 of 47 close contacts within the same asymmetric unit are listed below, sorted by their clash magnitude.

Atom-1	Atom-2	Interatomic distance (Å)	Clash overlap (Å)
1:D:197:ARG:NH2	8:D:401:HOH:O	2.07	0.78

Continued on next page...

Continued from previous page...

Atom-1	Atom-2	Interatomic distance (Å)	Clash overlap (Å)
1:B:294:THR:HG22	8:B:431:HOH:O	1.92	0.70
1:A:121:GLN:HG3	8:A:441:HOH:O	1.96	0.64
1:B:286:ILE:HG23	1:B:290:LEU:HD12	1.81	0.62
1:A:292:ASP:OD1	1:A:294:THR:OG1	2.20	0.60

There are no symmetry-related clashes.

5.3 Torsion angles [i](#)

5.3.1 Protein backbone [i](#)

In the following table, the Percentiles column shows the percent Ramachandran outliers of the chain as a percentile score with respect to all X-ray entries followed by that with respect to entries of similar resolution.

The Analysed column shows the number of residues for which the backbone conformation was analysed, and the total number of residues.

Mol	Chain	Analysed	Favoured	Allowed	Outliers	Percentiles	
1	A	190/195 (97%)	181 (95%)	8 (4%)	1 (0%)	29	16
1	B	192/195 (98%)	187 (97%)	5 (3%)	0	100	100
1	C	194/195 (100%)	182 (94%)	12 (6%)	0	100	100
1	D	191/195 (98%)	186 (97%)	5 (3%)	0	100	100
All	All	767/780 (98%)	736 (96%)	30 (4%)	1 (0%)	51	42

All (1) Ramachandran outliers are listed below:

Mol	Chain	Res	Type
1	A	182	PHE

5.3.2 Protein sidechains [i](#)

In the following table, the Percentiles column shows the percent sidechain outliers of the chain as a percentile score with respect to all X-ray entries followed by that with respect to entries of similar resolution.

The Analysed column shows the number of residues for which the sidechain conformation was analysed, and the total number of residues.

Mol	Chain	Analysed	Rotameric	Outliers	Percentiles	
1	A	166/168 (99%)	163 (98%)	3 (2%)	59	51
1	B	167/168 (99%)	161 (96%)	6 (4%)	35	23
1	C	169/168 (101%)	166 (98%)	3 (2%)	59	51
1	D	167/168 (99%)	165 (99%)	2 (1%)	71	67
All	All	669/672 (100%)	655 (98%)	14 (2%)	53	47

5 of 14 residues with a non-rotameric sidechain are listed below:

Mol	Chain	Res	Type
1	B	220	SER
1	B	294	THR
1	D	297	GLU
1	C	297	GLU
1	D	117	LEU

Sometimes sidechains can be flipped to improve hydrogen bonding and reduce clashes. 5 of 7 such sidechains are listed below:

Mol	Chain	Res	Type
1	B	142	GLN
1	C	139	GLN
1	D	215	ASN
1	D	139	GLN
1	A	237	ASN

5.3.3 RNA [i](#)

There are no RNA molecules in this entry.

5.4 Non-standard residues in protein, DNA, RNA chains [i](#)

There are no non-standard protein/DNA/RNA residues in this entry.

5.5 Carbohydrates [i](#)

There are no monosaccharides in this entry.

5.6 Ligand geometry [i](#)

17 ligands are modelled in this entry.

In the following table, the Counts columns list the number of bonds (or angles) for which Mogul statistics could be retrieved, the number of bonds (or angles) that are observed in the model and the number of bonds (or angles) that are defined in the Chemical Component Dictionary. The Link column lists molecule types, if any, to which the group is linked. The Z score for a bond length (or angle) is the number of standard deviations the observed value is removed from the expected value. A bond length (or angle) with $|Z| > 2$ is considered an outlier worth inspection. RMSZ is the root-mean-square of all Z scores of the bond lengths (or angles).

Mol	Type	Chain	Res	Link	Bond lengths			Bond angles		
					Counts	RMSZ	# Z > 2	Counts	RMSZ	# Z > 2
3	DGL	D	308	-	8,9,9	1.09	0	10,11,11	1.07	0
3	DGL	B	303	-	8,9,9	1.02	0	10,11,11	1.58	2 (20%)
2	EDO	C	302	-	3,3,3	0.14	0	2,2,2	0.17	0
4	GLY	D	309	-	4,4,4	1.22	1 (25%)	3,4,4	1.31	0
2	EDO	B	302	-	3,3,3	0.47	0	2,2,2	0.33	0
2	EDO	B	301	-	3,3,3	0.35	0	2,2,2	0.16	0
6	SO4	D	304	-	4,4,4	0.39	0	6,6,6	0.05	0
2	EDO	C	303	-	3,3,3	0.16	0	2,2,2	0.43	0
6	SO4	D	305	-	4,4,4	0.30	0	6,6,6	0.07	0
2	EDO	D	302	-	3,3,3	0.12	0	2,2,2	0.13	0
5	YDU	D	301	-	14,16,16	2.43	5 (35%)	12,21,21	1.44	3 (25%)
2	EDO	A	301	-	3,3,3	0.09	0	2,2,2	0.13	0
6	SO4	D	306	-	4,4,4	0.39	0	6,6,6	0.07	0
4	GLY	C	304	-	4,4,4	1.02	0	3,4,4	1.61	0
7	ALA	D	307	-	5,5,5	1.10	0	6,6,6	1.04	1 (16%)
2	EDO	C	301	-	3,3,3	0.21	0	2,2,2	0.27	0
2	EDO	D	303	-	3,3,3	0.37	0	2,2,2	0.17	0

In the following table, the Chirals column lists the number of chiral outliers, the number of chiral centers analysed, the number of these observed in the model and the number defined in the Chemical Component Dictionary. Similar counts are reported in the Torsion and Rings columns. ^{1,2} means no outliers of that kind were identified.

Mol	Type	Chain	Res	Link	Chirals	Torsions	Rings
3	DGL	D	308	-	-	4/9/9/9	-
3	DGL	B	303	-	-	4/9/9/9	-
2	EDO	C	302	-	-	0/1/1/1	-
4	GLY	D	309	-	-	0/2/2/2	-
2	EDO	B	302	-	-	0/1/1/1	-
2	EDO	B	301	-	-	1/1/1/1	-

Continued on next page...

Continued from previous page...

Mol	Type	Chain	Res	Link	Chirals	Torsions	Rings
2	EDO	C	303	-	-	1/1/1/1	-
2	EDO	D	302	-	-	0/1/1/1	-
5	YDU	D	301	-	-	0/6/15/15	0/2/2/2
2	EDO	A	301	-	-	0/1/1/1	-
4	GLY	C	304	-	-	0/2/2/2	-
7	ALA	D	307	-	-	0/4/4/4	-
2	EDO	C	301	-	-	0/1/1/1	-
2	EDO	D	303	-	-	1/1/1/1	-

The worst 5 of 6 bond length outliers are listed below:

Mol	Chain	Res	Type	Atoms	Z	Observed(Å)	Ideal(Å)
5	D	301	YDU	C07-N06	4.87	1.46	1.35
5	D	301	YDU	C05-N06	4.52	1.44	1.36
5	D	301	YDU	C13-C14	-3.39	1.37	1.51
5	D	301	YDU	C11-C10	-2.72	1.38	1.53
5	D	301	YDU	C14-C10	2.49	1.67	1.53

The worst 5 of 6 bond angle outliers are listed below:

Mol	Chain	Res	Type	Atoms	Z	Observed(°)	Ideal(°)
3	B	303	DGL	OXT-C-O	-3.37	116.44	124.09
5	D	301	YDU	C05-N06-C07	-2.93	121.62	129.54
5	D	301	YDU	C01-C02-N03	2.56	126.15	120.04
5	D	301	YDU	C01-C02-N15	2.17	125.92	120.49
7	D	307	ALA	OXT-C-O	-2.09	119.33	124.09

There are no chirality outliers.

5 of 11 torsion outliers are listed below:

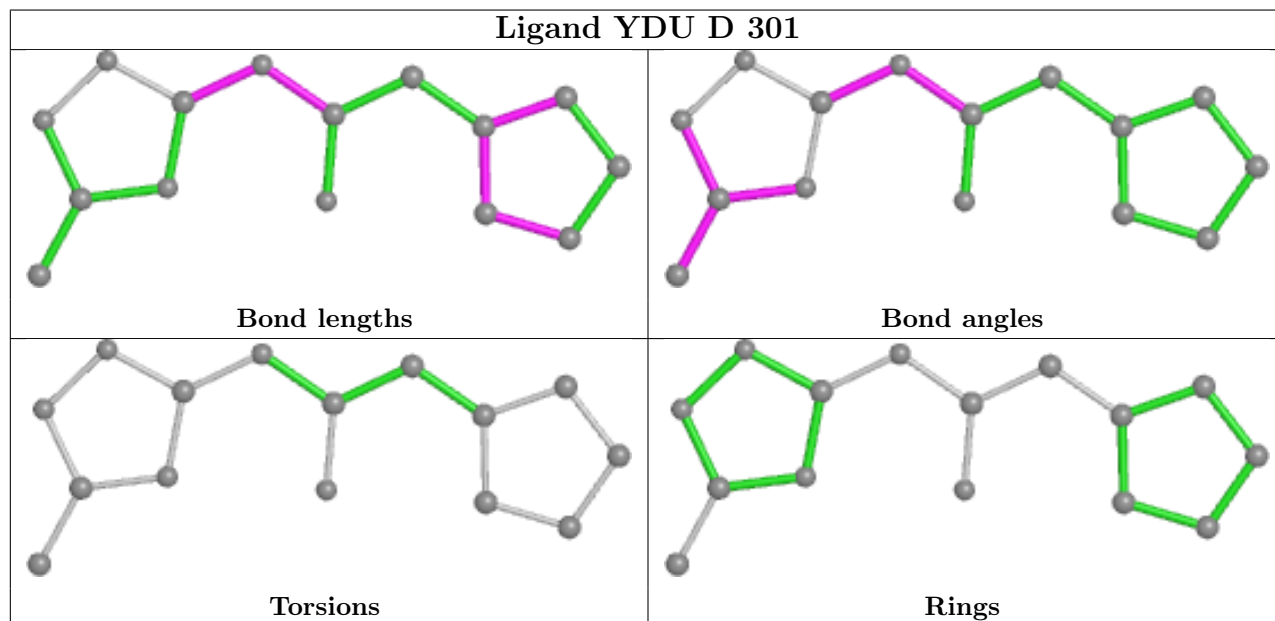
Mol	Chain	Res	Type	Atoms
2	C	303	EDO	O1-C1-C2-O2
3	D	308	DGL	OXT-C-CA-CB
3	D	308	DGL	CA-CB-CG-CD
2	D	303	EDO	O1-C1-C2-O2
3	D	308	DGL	O-C-CA-CB

There are no ring outliers.

No monomer is involved in short contacts.

The following is a two-dimensional graphical depiction of Mogul quality analysis of bond lengths, bond angles, torsion angles, and ring geometry for all instances of the Ligand of Interest. In

addition, ligands with molecular weight > 250 and outliers as shown on the validation Tables will also be included. For torsion angles, if less than 5% of the Mogul distribution of torsion angles is within 10 degrees of the torsion angle in question, then that torsion angle is considered an outlier. Any bond that is central to one or more torsion angles identified as an outlier by Mogul will be highlighted in the graph. For rings, the root-mean-square deviation (RMSD) between the ring in question and similar rings identified by Mogul is calculated over all ring torsion angles. If the average RMSD is greater than 60 degrees and the minimal RMSD between the ring in question and any Mogul-identified rings is also greater than 60 degrees, then that ring is considered an outlier. The outliers are highlighted in purple. The color gray indicates Mogul did not find sufficient equivalents in the CSD to analyse the geometry.



5.7 Other polymers [i](#)

There are no such residues in this entry.

5.8 Polymer linkage issues [i](#)

There are no chain breaks in this entry.

6 Fit of model and data [i](#)

6.1 Protein, DNA and RNA chains [i](#)

In the following table, the column labelled ‘#RSRZ > 2’ contains the number (and percentage) of RSRZ outliers, followed by percent RSRZ outliers for the chain as percentile scores relative to all X-ray entries and entries of similar resolution. The OWAB column contains the minimum, median, 95th percentile and maximum values of the occupancy-weighted average B-factor per residue. The column labelled ‘Q < 0.9’ lists the number of (and percentage) of residues with an average occupancy less than 0.9.

Mol	Chain	Analysed	<RSRZ>	#RSRZ>2	OWAB(Å ²)	Q<0.9
1	A	191/195 (97%)	0.61	21 (10%) 5 6	34, 52, 85, 113	13 (6%)
1	B	193/195 (98%)	0.25	11 (5%) 23 25	27, 40, 59, 71	12 (6%)
1	C	193/195 (98%)	0.28	13 (6%) 17 19	31, 44, 68, 103	9 (4%)
1	D	191/195 (97%)	0.01	6 (3%) 49 51	24, 34, 53, 77	6 (3%)
All	All	768/780 (98%)	0.29	51 (6%) 18 20	24, 43, 72, 113	40 (5%)

The worst 5 of 51 RSRZ outliers are listed below:

Mol	Chain	Res	Type	RSRZ
1	A	110	GLN	13.8
1	B	108	ILE	9.7
1	C	110	GLN	8.7
1	C	108	ILE	8.6
1	B	112	ILE	8.5

6.2 Non-standard residues in protein, DNA, RNA chains [i](#)

There are no non-standard protein/DNA/RNA residues in this entry.

6.3 Carbohydrates [i](#)

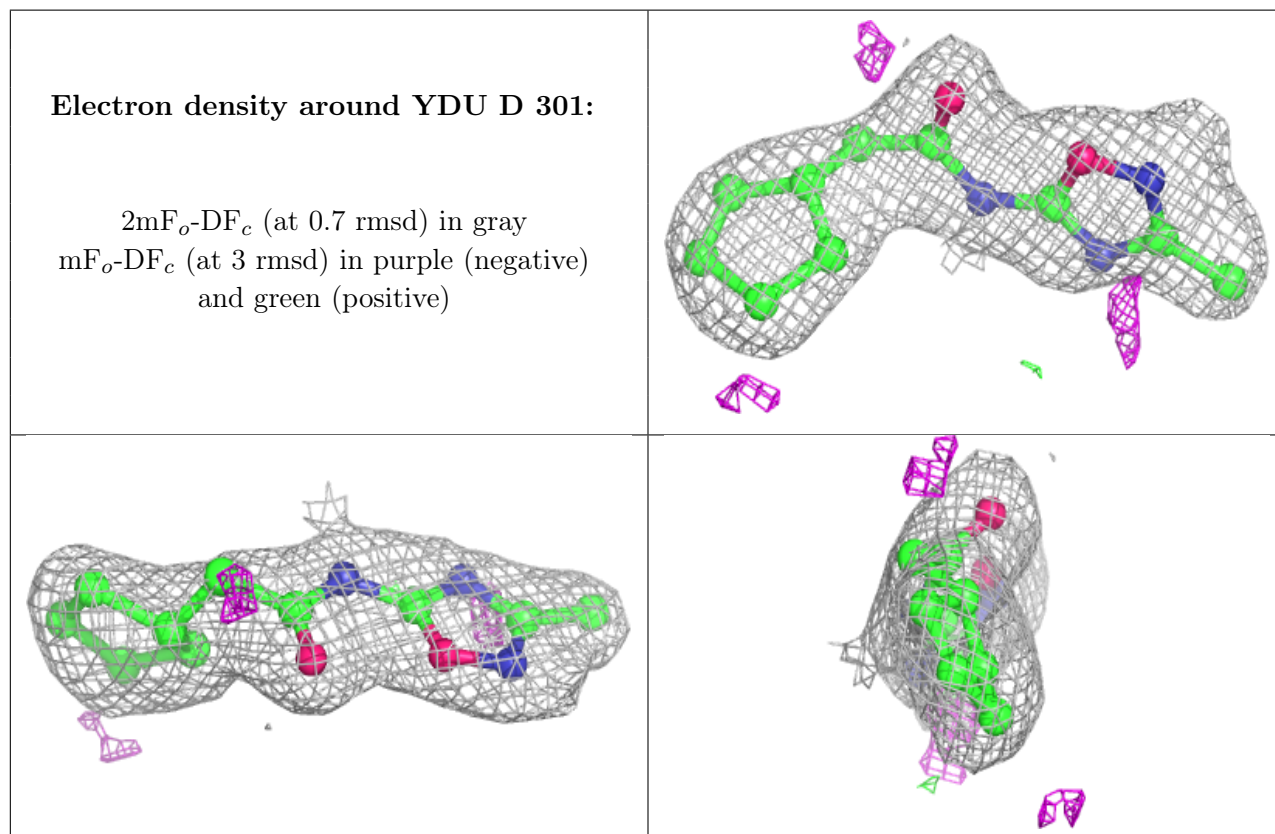
There are no monosaccharides in this entry.

6.4 Ligands [i](#)

In the following table, the Atoms column lists the number of modelled atoms in the group and the number defined in the chemical component dictionary. The B-factors column lists the minimum, median, 95th percentile and maximum values of B factors of atoms in the group. The column labelled ‘Q < 0.9’ lists the number of atoms with occupancy less than 0.9.

Mol	Type	Chain	Res	Atoms	RSCC	RSR	B-factors(\AA^2)	Q<0.9
6	SO4	D	304	5/5	0.66	0.93	211,214,216,216	5
2	EDO	C	302	4/4	0.84	0.12	49,54,55,55	0
6	SO4	D	306	5/5	0.85	0.25	63,64,68,70	5
3	DGL	B	303	10/10	0.87	0.18	46,62,69,72	0
6	SO4	D	305	5/5	0.89	0.15	63,73,86,96	0
3	DGL	D	308	10/10	0.90	0.21	32,55,63,69	0
2	EDO	C	303	4/4	0.90	0.13	62,62,66,71	0
5	YDU	D	301	15/15	0.91	0.11	43,48,49,49	0
4	GLY	C	304	5/5	0.92	0.14	47,49,53,55	0
7	ALA	D	307	6/6	0.92	0.12	51,57,61,65	0
2	EDO	A	301	4/4	0.93	0.12	46,50,52,52	0
2	EDO	B	301	4/4	0.93	0.13	33,37,39,44	0
2	EDO	B	302	4/4	0.95	0.13	27,32,37,38	0
4	GLY	D	309	5/5	0.96	0.19	55,62,68,70	0
2	EDO	D	302	4/4	0.96	0.14	26,27,28,32	0
2	EDO	C	301	4/4	0.96	0.12	35,36,40,41	0
2	EDO	D	303	4/4	0.97	0.25	38,43,43,44	0

The following is a graphical depiction of the model fit to experimental electron density of all instances of the Ligand of Interest. In addition, ligands with molecular weight > 250 and outliers as shown on the geometry validation Tables will also be included. Each fit is shown from different orientation to approximate a three-dimensional view.



6.5 Other polymers [i](#)

There are no such residues in this entry.