



wwPDB EM Validation Summary Report ⓘ

Dec 12, 2022 – 06:55 am GMT

PDB ID : 6Y5D
EMDB ID : EMD-10694
Title : Structure of human cGAS (K394E) bound to the nucleosome
Authors : Pathare, G.R.; Cavadini, S.; Kempf, G.; Thoma, N.H.
Deposited on : 2020-02-25
Resolution : 4.10 Å(reported)

This is a wwPDB EM Validation Summary Report for a publicly released PDB entry.

We welcome your comments at validation@mail.wwpdb.org

A user guide is available at

<https://www.wwpdb.org/validation/2017/EMValidationReportHelp>

with specific help available everywhere you see the ⓘ symbol.

The types of validation reports are described at

<http://www.wwpdb.org/validation/2017/FAQs#types>.

The following versions of software and data (see [references ⓘ](#)) were used in the production of this report:

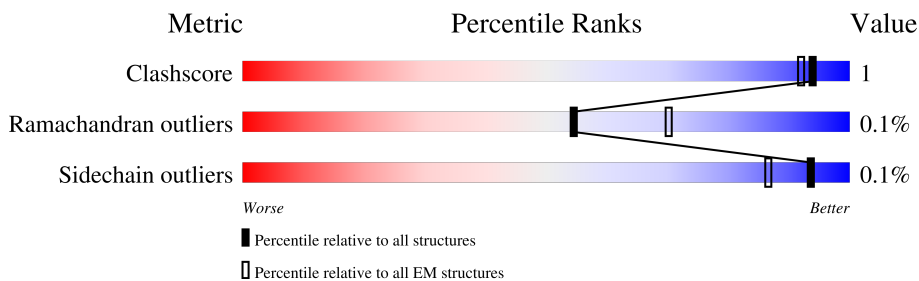
EMDB validation analysis : 0.0.1.dev43
Mogul : 1.8.4, CSD as541be (2020)
MolProbity : 4.02b-467
Percentile statistics : 20191225.v01 (using entries in the PDB archive December 25th 2019)
MapQ : 1.9.9
Ideal geometry (proteins) : Engh & Huber (2001)
Ideal geometry (DNA, RNA) : Parkinson et al. (1996)
Validation Pipeline (wwPDB-VP) : 2.31.3

1 Overall quality at a glance

The following experimental techniques were used to determine the structure:
ELECTRON MICROSCOPY

The reported resolution of this entry is 4.10 Å.

Percentile scores (ranging between 0-100) for global validation metrics of the entry are shown in the following graphic. The table shows the number of entries on which the scores are based.



Metric	Whole archive (#Entries)	EM structures (#Entries)
Clashscore	158937	4297
Ramachandran outliers	154571	4023
Sidechain outliers	154315	3826

The table below summarises the geometric issues observed across the polymeric chains and their fit to the map. The red, orange, yellow and green segments of the bar indicate the fraction of residues that contain outliers for ≥ 3 , 2, 1 and 0 types of geometric quality criteria respectively. A grey segment represents the fraction of residues that are not modelled. The numeric value for each fraction is indicated below the corresponding segment, with a dot representing fractions $\leq 5\%$. The upper red bar (where present) indicates the fraction of residues that have poor fit to the EM map (all-atom inclusion $< 40\%$). The numeric value is given above the bar.

Mol	Chain	Length	Quality of chain
1	A	98	92% (green), 6% (yellow), 2% (grey)
1	E	98	92% (green), 6% (yellow), 2% (grey)
1	M	98	94% (green), 4% (yellow), 2% (grey)
1	Q	98	7% (red), 94% (green), 4% (yellow), 2% (grey)
2	B	103	72% (green), 7% (yellow), 21% (grey)
2	F	103	73% (green), 8% (yellow), 19% (grey)
2	N	103	76% (green), 23% (grey)
2	R	103	5% (red), 75% (green), 20% (grey)

Continued on next page...

Continued from previous page...

Mol	Chain	Length	Quality of chain
3	C	130	 76% 6% 18%
3	G	130	 77% 6% 17%
3	O	130	 6% 79% 19%
3	S	130	 75% 22%
4	D	126	 71% 26%
4	H	126	 71% 25%
4	P	126	 71% 29%
4	T	126	 74% 26%
5	I	153	 99%
5	U	153	 10% 99%
6	J	153	 97%
6	V	153	 11% 97%
7	K	362	 98%
7	L	362	 25% 97%

2 Entry composition i

There are 9 unique types of molecules in this entry. The entry contains 30372 atoms, of which 0 are hydrogens and 0 are deuteriums.

In the tables below, the AltConf column contains the number of residues with at least one atom in alternate conformation and the Trace column contains the number of residues modelled with at most 2 atoms.

- Molecule 1 is a protein called Histone H3.2.

Mol	Chain	Residues	Atoms					AltConf	Trace
			Total	C	N	O	S		
1	A	96	789	499	151	137	2	0	0
1	E	96	789	499	151	137	2	0	0
1	M	96	789	499	151	137	2	0	0
1	Q	94	772	488	147	135	2	0	0

There are 4 discrepancies between the modelled and reference sequences:

Chain	Residue	Modelled	Actual	Comment	Reference
A	111	ALA	CYS	conflict	UNP Q71DI3
E	111	ALA	CYS	conflict	UNP Q71DI3
M	111	ALA	CYS	conflict	UNP Q71DI3
Q	111	ALA	CYS	conflict	UNP Q71DI3

- Molecule 2 is a protein called Histone H4.

Mol	Chain	Residues	Atoms					AltConf	Trace
			Total	C	N	O	S		
2	B	81	646	407	126	112	1	0	0
2	F	83	662	418	129	114	1	0	0
2	N	79	627	395	121	110	1	0	0
2	R	77	618	391	119	107	1	0	0

- Molecule 3 is a protein called Histone H2A type 2-A.

Mol	Chain	Residues	Atoms					AltConf	Trace
3	C	107	Total	C	N	O	S	0	0
			822	518	161	142	1		
3	G	108	Total	C	N	O	S	0	0
			831	524	163	143	1		
3	O	105	Total	C	N	O	S	0	0
			806	509	156	140	1		
3	S	102	Total	C	N	O	S	0	0
			787	493	156	137	1		

- Molecule 4 is a protein called Histone H2B type 1-K.

Mol	Chain	Residues	Atoms					AltConf	Trace
4	D	93	Total	C	N	O	S	0	0
			724	455	130	137	2		
4	H	94	Total	C	N	O	S	0	0
			735	461	134	138	2		
4	P	90	Total	C	N	O	S	0	0
			698	440	123	133	2		
4	T	93	Total	C	N	O	S	0	0
			724	455	130	137	2		

- Molecule 5 is a DNA chain called DNA (153-MER).

Mol	Chain	Residues	Atoms					AltConf	Trace
5	I	153	Total	C	N	O	P	0	0
			3119	1482	564	920	153		
5	U	153	Total	C	N	O	P	0	0
			3119	1482	564	920	153		

- Molecule 6 is a DNA chain called DNA (153-MER).

Mol	Chain	Residues	Atoms					AltConf	Trace
6	J	153	Total	C	N	O	P	0	0
			3154	1493	592	916	153		
6	V	153	Total	C	N	O	P	0	0
			3154	1493	592	916	153		

- Molecule 7 is a protein called Cyclic GMP-AMP synthase.

Mol	Chain	Residues	Atoms					AltConf	Trace
7	K	362	Total	C	N	O	S	0	0
			2980	1903	514	548	15		

Continued on next page...

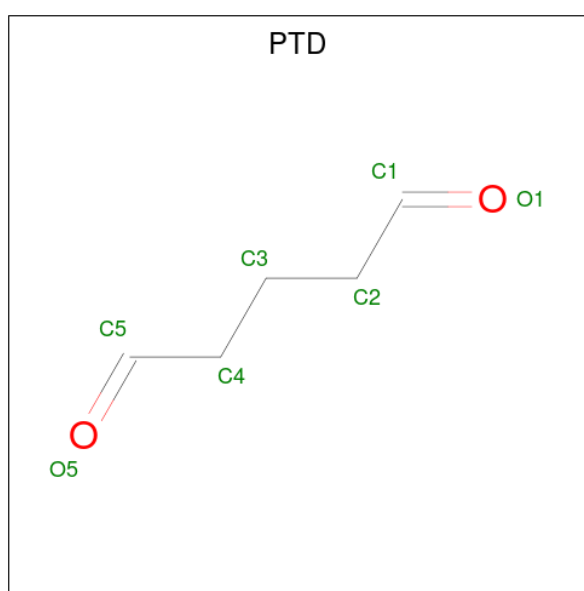
Continued from previous page...

Mol	Chain	Residues	Atoms					AltConf	Trace
			Total	C	N	O	S		
7	L	362	2980	1903	514	548	15	0	0

There are 2 discrepancies between the modelled and reference sequences:

Chain	Residue	Modelled	Actual	Comment	Reference
K	394	GLU	LYS	conflict	UNP Q8N884
L	394	GLU	LYS	conflict	UNP Q8N884

- Molecule 8 is PENTANEDIAL (three-letter code: PTD) (formula: $C_5H_8O_2$).



Mol	Chain	Residues	Atoms		AltConf
8	A	1	Total	C	0
			5	5	
8	C	1	Total	C	0
			5	5	
8	G	1	Total	C	0
			5	5	
8	H	1	Total	C	0
			10	10	
8	H	1	Total	C	0
			10	10	
8	M	1	Total	C	0
			5	5	
8	O	1	Total	C	0
			5	5	

Continued on next page...

Continued from previous page...

Mol	Chain	Residues	Atoms	AltConf
8	S	1	Total C 10 10	0
8	S	1	Total C 10 10	0

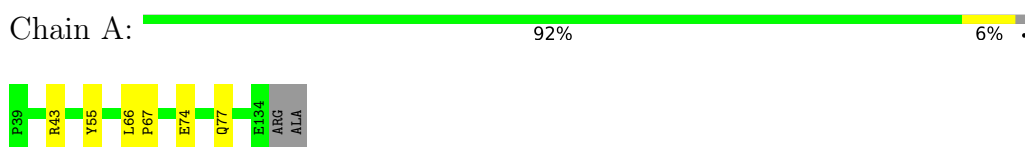
- Molecule 9 is ZINC ION (three-letter code: ZN) (formula: Zn).

Mol	Chain	Residues	Atoms	AltConf
9	K	1	Total Zn 1 1	0
9	L	1	Total Zn 1 1	0

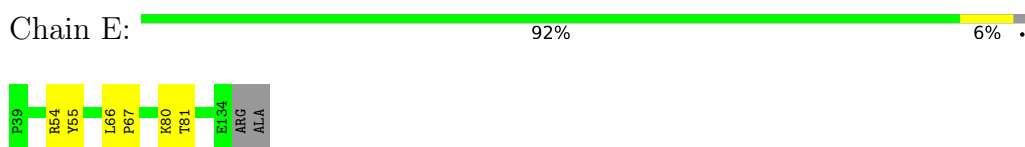
3 Residue-property plots [i](#)

These plots are drawn for all protein, RNA, DNA and oligosaccharide chains in the entry. The first graphic for a chain summarises the proportions of the various outlier classes displayed in the second graphic. The second graphic shows the sequence view annotated by issues in geometry and atom inclusion in map density. Residues are color-coded according to the number of geometric quality criteria for which they contain at least one outlier: green = 0, yellow = 1, orange = 2 and red = 3 or more. A red diamond above a residue indicates a poor fit to the EM map for this residue (all-atom inclusion < 40%). Stretches of 2 or more consecutive residues without any outlier are shown as a green connector. Residues present in the sample, but not in the model, are shown in grey.

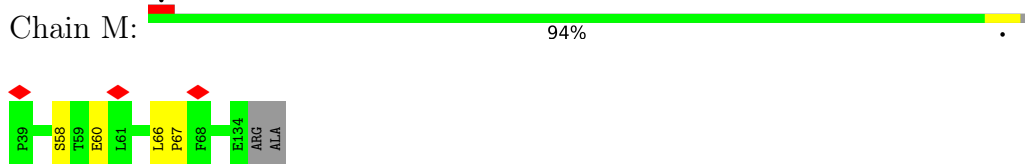
- Molecule 1: Histone H3.2



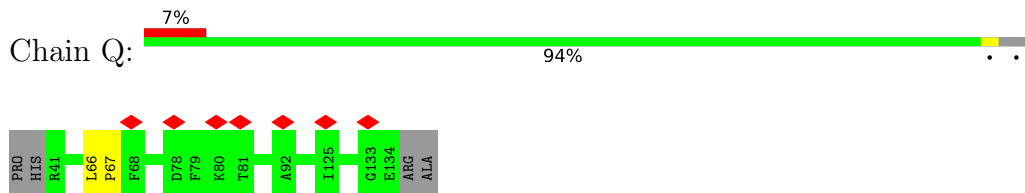
- Molecule 1: Histone H3.2



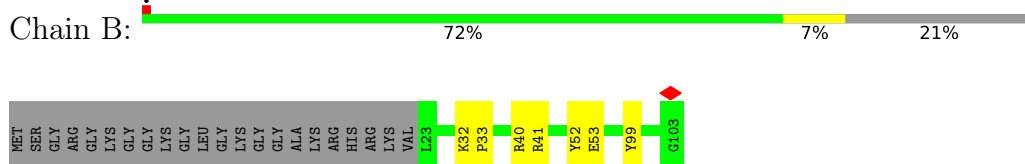
- Molecule 1: Histone H3.2



- Molecule 1: Histone H3.2



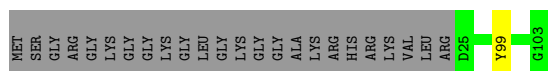
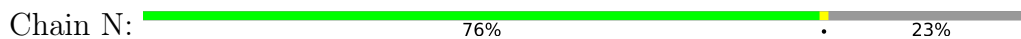
- Molecule 2: Histone H4



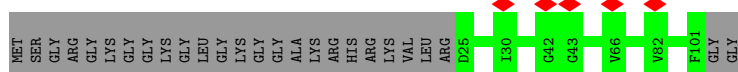
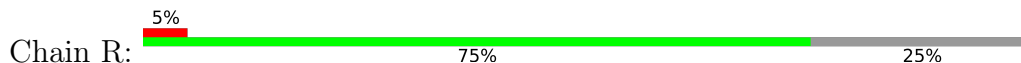
- Molecule 2: Histone H4



• Molecule 2: Histone H4



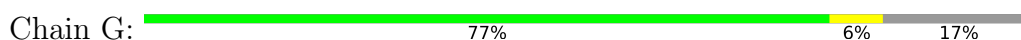
• Molecule 2: Histone H4



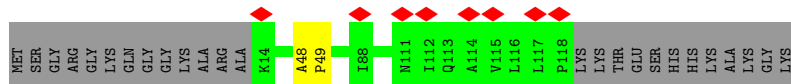
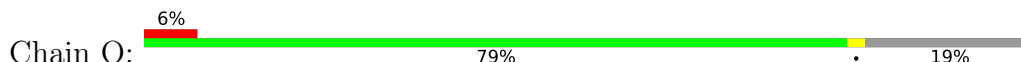
• Molecule 3: Histone H2A type 2-A



• Molecule 3: Histone H2A type 2-A



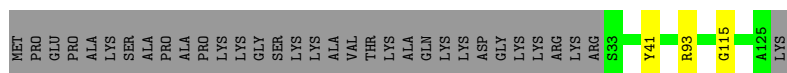
• Molecule 3: Histone H2A type 2-A



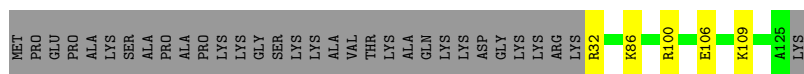
• Molecule 3: Histone H2A type 2-A



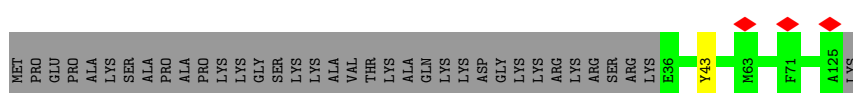
• Molecule 4: Histone H2B type 1-K



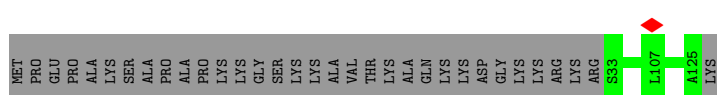
● Molecule 4: Histone H2B type 1-K



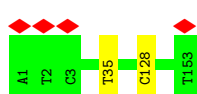
● Molecule 4: Histone H2B type 1-K



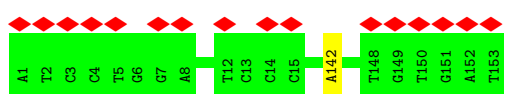
● Molecule 4: Histone H2B type 1-K



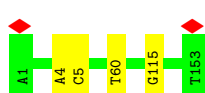
● Molecule 5: DNA (153-MER)



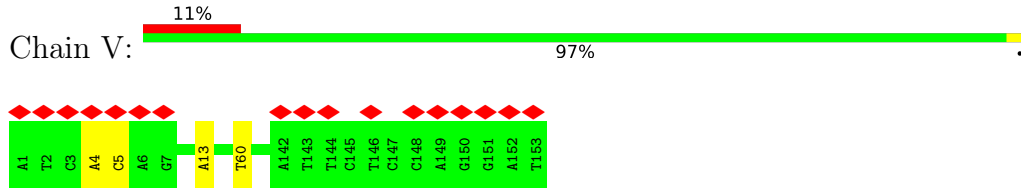
● Molecule 5: DNA (153-MER)



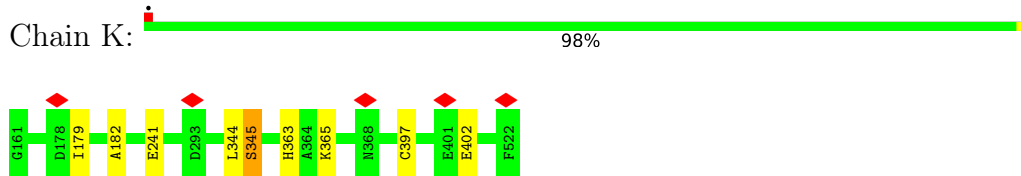
● Molecule 6: DNA (153-MER)



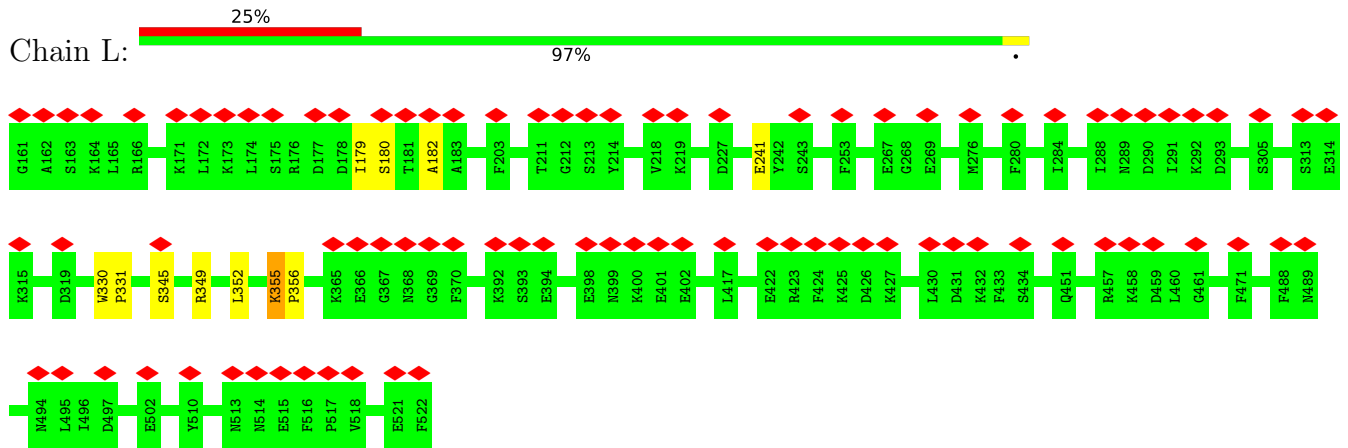
• Molecule 6: DNA (153-MER)



• Molecule 7: Cyclic GMP-AMP synthase



• Molecule 7: Cyclic GMP-AMP synthase



4 Experimental information

Property	Value	Source
EM reconstruction method	SINGLE PARTICLE	Depositor
Imposed symmetry	POINT, C1	Depositor
Number of particles used	13943	Depositor
Resolution determination method	FSC 0.143 CUT-OFF	Depositor
CTF correction method	PHASE FLIPPING AND AMPLITUDE CORRECTION	Depositor
Microscope	FEI TITAN KRIOS	Depositor
Voltage (kV)	300	Depositor
Electron dose ($e^-/\text{\AA}^2$)	45	Depositor
Minimum defocus (nm)	Not provided	
Maximum defocus (nm)	Not provided	
Magnification	Not provided	
Image detector	GATAN K2 QUANTUM (4k x 4k)	Depositor
Maximum map value	0.712	Depositor
Minimum map value	-0.232	Depositor
Average map value	0.006	Depositor
Map value standard deviation	0.040	Depositor
Recommended contour level	0.124	Depositor
Map size (Å)	275.2, 275.2, 275.2	wwPDB
Map dimensions	320, 320, 320	wwPDB
Map angles (°)	90.0, 90.0, 90.0	wwPDB
Pixel spacing (Å)	0.86, 0.86, 0.86	Depositor

5 Model quality i

5.1 Standard geometry i

Bond lengths and bond angles in the following residue types are not validated in this section: ZN, PTD

The Z score for a bond length (or angle) is the number of standard deviations the observed value is removed from the expected value. A bond length (or angle) with $|Z| > 5$ is considered an outlier worth inspection. RMSZ is the root-mean-square of all Z scores of the bond lengths (or angles).

Mol	Chain	Bond lengths		Bond angles	
		RMSZ	# Z >5	RMSZ	# Z >5
1	A	1.00	1/801 (0.1%)	0.69	0/1075
1	E	0.99	0/801	0.66	0/1075
1	M	0.84	0/801	0.67	0/1075
1	Q	0.82	0/782	0.69	0/1049
2	B	0.98	0/653	0.78	2/873 (0.2%)
2	F	0.84	0/669	0.73	0/894
2	N	0.81	0/634	0.74	1/848 (0.1%)
2	R	0.78	0/625	0.69	0/838
3	C	0.89	0/832	0.65	0/1121
3	G	0.91	3/841 (0.4%)	0.65	0/1132
3	O	0.80	0/816	0.63	0/1100
3	S	0.80	0/796	0.68	0/1070
4	D	1.00	0/735	0.73	2/989 (0.2%)
4	H	0.88	0/746	0.68	0/1003
4	P	0.84	0/709	0.73	1/956 (0.1%)
4	T	0.81	0/735	0.68	0/989
5	I	0.52	0/3494	0.92	0/5386
5	U	0.52	0/3494	0.92	0/5386
6	J	0.53	0/3542	0.92	0/5469
6	V	0.53	0/3542	0.92	0/5469
7	K	0.86	1/3040 (0.0%)	0.71	0/4076
7	L	0.84	1/3040 (0.0%)	0.70	1/4076 (0.0%)
All	All	0.74	6/32128 (0.0%)	0.81	7/45949 (0.0%)

The worst 5 of 6 bond length outliers are listed below:

Mol	Chain	Res	Type	Atoms	Z	Observed(Å)	Ideal(Å)
7	L	241	GLU	CG-CD	-5.49	1.43	1.51
3	G	30	ARG	CG-CD	-5.25	1.38	1.51
3	G	33	ARG	CG-CD	-5.13	1.39	1.51
7	K	241	GLU	CG-CD	-5.11	1.44	1.51

Continued on next page...

Continued from previous page...

Mol	Chain	Res	Type	Atoms	Z	Observed(Å)	Ideal(Å)
3	G	93	GLU	CD-OE1	-5.09	1.20	1.25

The worst 5 of 7 bond angle outliers are listed below:

Mol	Chain	Res	Type	Atoms	Z	Observed(°)	Ideal(°)
4	P	43	TYR	CB-CG-CD1	-7.11	116.74	121.00
2	N	99	TYR	CB-CG-CD2	-5.35	117.79	121.00
4	D	93	ARG	NE-CZ-NH2	-5.30	117.65	120.30
4	D	41	TYR	CB-CG-CD1	-5.26	117.84	121.00
2	B	40	ARG	NE-CZ-NH2	-5.23	117.68	120.30

There are no chirality outliers.

There are no planarity outliers.

5.2 Too-close contacts [i](#)

In the following table, the Non-H and H(model) columns list the number of non-hydrogen atoms and hydrogen atoms in the chain respectively. The H(added) column lists the number of hydrogen atoms added and optimized by MolProbity. The Clashes column lists the number of clashes within the asymmetric unit, whereas Symm-Clashes lists symmetry-related clashes.

Mol	Chain	Non-H	H(model)	H(added)	Clashes	Symm-Clashes
1	A	789	0	824	4	0
1	E	789	0	826	6	0
1	M	789	0	823	2	0
1	Q	772	0	811	1	0
2	B	646	0	685	4	0
2	F	662	0	709	6	0
2	N	627	0	661	0	0
2	R	618	0	657	0	0
3	C	822	0	874	7	0
3	G	831	0	889	4	0
3	O	806	0	860	1	0
3	S	787	0	831	3	0
4	D	724	0	741	1	0
4	H	735	0	752	3	0
4	P	698	0	709	0	0
4	T	724	0	743	0	0
5	I	3119	0	1719	2	0
5	U	3119	0	1719	1	0
6	J	3154	0	1717	3	0

Continued on next page...

Continued from previous page...

Mol	Chain	Non-H	H(model)	H(added)	Clashes	Symm-Clashes
6	V	3154	0	1717	3	0
7	K	2980	0	3009	5	0
7	L	2980	0	3009	5	0
8	A	5	0	6	0	0
8	C	5	0	6	0	0
8	G	5	0	6	0	0
8	H	10	0	12	0	0
8	M	5	0	6	0	0
8	O	5	0	6	0	0
8	S	10	0	12	0	0
9	K	1	0	0	0	0
9	L	1	0	0	0	0
All	All	30372	0	25339	53	0

The all-atom clashscore is defined as the number of clashes found per 1000 atoms (including hydrogen atoms). The all-atom clashscore for this structure is 1.

The worst 5 of 53 close contacts within the same asymmetric unit are listed below, sorted by their clash magnitude.

Atom-1	Atom-2	Interatomic distance (Å)	Clash overlap (Å)
4:H:106:GLU:HG3	4:H:109:LYS:HE2	1.85	0.57
2:F:32:LYS:HB3	2:F:33:PRO:HD3	1.86	0.57
3:G:48:ALA:N	3:G:49:PRO:HD2	2.20	0.57
3:C:48:ALA:N	3:C:49:PRO:CD	2.68	0.56
2:F:32:LYS:HE3	2:F:52:TYR:CE2	2.42	0.55

There are no symmetry-related clashes.

5.3 Torsion angles [i](#)

5.3.1 Protein backbone [i](#)

In the following table, the Percentiles column shows the percent Ramachandran outliers of the chain as a percentile score with respect to all PDB entries followed by that with respect to all EM entries.

The Analysed column shows the number of residues for which the backbone conformation was analysed, and the total number of residues.

Mol	Chain	Analysed	Favoured	Allowed	Outliers	Percentiles	
1	A	94/98 (96%)	94 (100%)	0	0	100	100
1	E	94/98 (96%)	94 (100%)	0	0	100	100
1	M	94/98 (96%)	93 (99%)	1 (1%)	0	100	100
1	Q	92/98 (94%)	92 (100%)	0	0	100	100
2	B	79/103 (77%)	77 (98%)	2 (2%)	0	100	100
2	F	81/103 (79%)	81 (100%)	0	0	100	100
2	N	77/103 (75%)	75 (97%)	2 (3%)	0	100	100
2	R	75/103 (73%)	74 (99%)	1 (1%)	0	100	100
3	C	105/130 (81%)	104 (99%)	1 (1%)	0	100	100
3	G	106/130 (82%)	104 (98%)	2 (2%)	0	100	100
3	O	103/130 (79%)	103 (100%)	0	0	100	100
3	S	100/130 (77%)	100 (100%)	0	0	100	100
4	D	91/126 (72%)	90 (99%)	1 (1%)	0	100	100
4	H	92/126 (73%)	90 (98%)	2 (2%)	0	100	100
4	P	88/126 (70%)	87 (99%)	1 (1%)	0	100	100
4	T	91/126 (72%)	90 (99%)	1 (1%)	0	100	100
7	K	360/362 (99%)	344 (96%)	15 (4%)	1 (0%)	41	75
7	L	360/362 (99%)	345 (96%)	14 (4%)	1 (0%)	41	75
All	All	2182/2552 (86%)	2137 (98%)	43 (2%)	2 (0%)	54	84

All (2) Ramachandran outliers are listed below:

Mol	Chain	Res	Type
7	K	345	SER
7	L	345	SER

5.3.2 Protein sidechains [i](#)

In the following table, the Percentiles column shows the percent sidechain outliers of the chain as a percentile score with respect to all PDB entries followed by that with respect to all EM entries.

The Analysed column shows the number of residues for which the sidechain conformation was analysed, and the total number of residues.

Mol	Chain	Analysed	Rotameric	Outliers	Percentiles	
1	A	83/84 (99%)	83 (100%)	0	100	100
1	E	83/84 (99%)	83 (100%)	0	100	100
1	M	83/84 (99%)	83 (100%)	0	100	100
1	Q	81/84 (96%)	81 (100%)	0	100	100
2	B	66/79 (84%)	66 (100%)	0	100	100
2	F	68/79 (86%)	68 (100%)	0	100	100
2	N	64/79 (81%)	64 (100%)	0	100	100
2	R	64/79 (81%)	64 (100%)	0	100	100
3	C	83/99 (84%)	83 (100%)	0	100	100
3	G	84/99 (85%)	84 (100%)	0	100	100
3	O	82/99 (83%)	82 (100%)	0	100	100
3	S	79/99 (80%)	79 (100%)	0	100	100
4	D	79/105 (75%)	79 (100%)	0	100	100
4	H	80/105 (76%)	79 (99%)	1 (1%)	69	81
4	P	76/105 (72%)	76 (100%)	0	100	100
4	T	79/105 (75%)	79 (100%)	0	100	100
7	K	334/334 (100%)	334 (100%)	0	100	100
7	L	334/334 (100%)	333 (100%)	1 (0%)	92	95
All	All	1902/2136 (89%)	1900 (100%)	2 (0%)	93	97

All (2) residues with a non-rotameric sidechain are listed below:

Mol	Chain	Res	Type
4	H	86	LYS
7	L	355	LYS

Sometimes sidechains can be flipped to improve hydrogen bonding and reduce clashes. There are no such sidechains identified.

5.3.3 RNA [i](#)

There are no RNA molecules in this entry.

5.4 Non-standard residues in protein, DNA, RNA chains [i](#)

There are no non-standard protein/DNA/RNA residues in this entry.

5.5 Carbohydrates [i](#)

There are no monosaccharides in this entry.

5.6 Ligand geometry [i](#)

Of 11 ligands modelled in this entry, 2 are monoatomic - leaving 9 for Mogul analysis.

In the following table, the Counts columns list the number of bonds (or angles) for which Mogul statistics could be retrieved, the number of bonds (or angles) that are observed in the model and the number of bonds (or angles) that are defined in the Chemical Component Dictionary. The Link column lists molecule types, if any, to which the group is linked. The Z score for a bond length (or angle) is the number of standard deviations the observed value is removed from the expected value. A bond length (or angle) with $|Z| > 2$ is considered an outlier worth inspection. RMSZ is the root-mean-square of all Z scores of the bond lengths (or angles).

Mol	Type	Chain	Res	Link	Bond lengths			Bond angles		
					Counts	RMSZ	$\# Z > 2$	Counts	RMSZ	$\# Z > 2$
8	PTD	C	201	3	4,4,6	0.38	0	3,3,5	0.48	0
8	PTD	G	701	3,7	4,4,6	0.47	0	3,3,5	0.43	0
8	PTD	S	702	3,4	4,4,6	0.39	0	3,3,5	0.46	0
8	PTD	S	701	3,7	4,4,6	0.42	0	3,3,5	0.36	0
8	PTD	A	201	1,2	4,4,6	0.49	0	3,3,5	0.35	0
8	PTD	H	301	4	4,4,6	0.41	0	3,3,5	0.42	0
8	PTD	H	302	3,4	4,4,6	0.45	0	3,3,5	0.41	0
8	PTD	M	201	1,2	4,4,6	0.44	0	3,3,5	0.45	0
8	PTD	O	201	3	4,4,6	0.41	0	3,3,5	0.40	0

In the following table, the Chirals column lists the number of chiral outliers, the number of chiral centers analysed, the number of these observed in the model and the number defined in the Chemical Component Dictionary. Similar counts are reported in the Torsion and Rings columns. '-' means no outliers of that kind were identified.

Mol	Type	Chain	Res	Link	Chirals	Torsions	Rings
8	PTD	C	201	3	-	0/2/2/4	-
8	PTD	G	701	3,7	-	1/2/2/4	-
8	PTD	S	702	3,4	-	1/2/2/4	-
8	PTD	S	701	3,7	-	0/2/2/4	-
8	PTD	A	201	1,2	-	1/2/2/4	-
8	PTD	H	301	4	-	1/2/2/4	-

Continued on next page...

Continued from previous page...

Mol	Type	Chain	Res	Link	Chirals	Torsions	Rings
8	PTD	H	302	3,4	-	1/2/2/4	-
8	PTD	M	201	1,2	-	0/2/2/4	-
8	PTD	O	201	3	-	0/2/2/4	-

There are no bond length outliers.

There are no bond angle outliers.

There are no chirality outliers.

All (5) torsion outliers are listed below:

Mol	Chain	Res	Type	Atoms
8	S	702	PTD	C1-C2-C3-C4
8	A	201	PTD	C2-C3-C4-C5
8	G	701	PTD	C2-C3-C4-C5
8	H	301	PTD	C1-C2-C3-C4
8	H	302	PTD	C1-C2-C3-C4

There are no ring outliers.

No monomer is involved in short contacts.

5.7 Other polymers [i](#)

There are no such residues in this entry.

5.8 Polymer linkage issues [i](#)

There are no chain breaks in this entry.

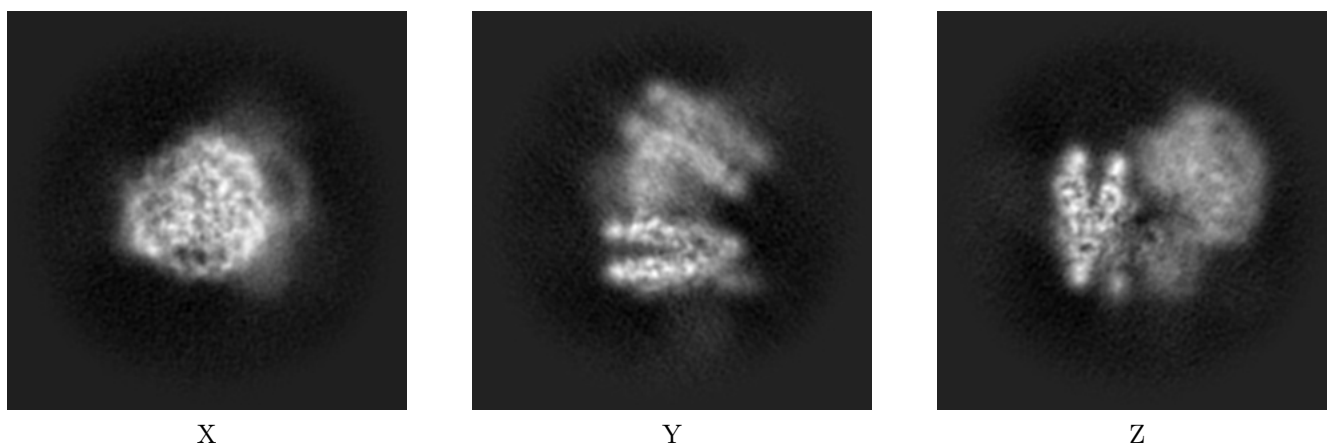
6 Map visualisation [i](#)

This section contains visualisations of the EMDB entry EMD-10694. These allow visual inspection of the internal detail of the map and identification of artifacts.

No raw map or half-maps were deposited for this entry and therefore no images, graphs, etc. pertaining to the raw map can be shown.

6.1 Orthogonal projections [i](#)

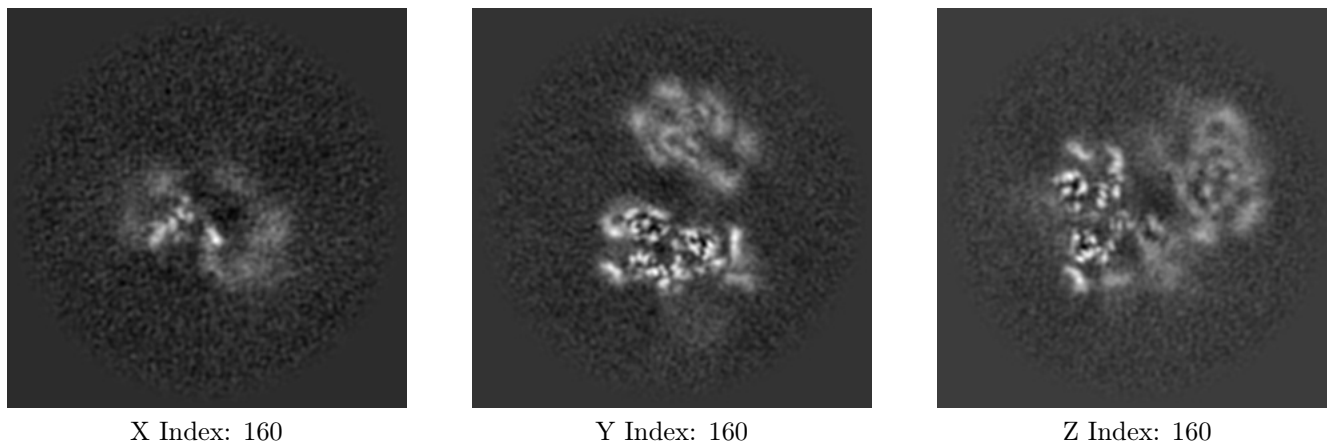
6.1.1 Primary map



The images above show the map projected in three orthogonal directions.

6.2 Central slices [i](#)

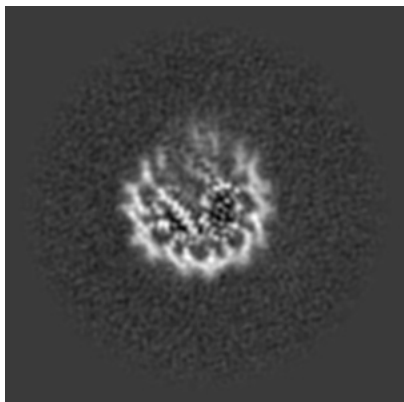
6.2.1 Primary map



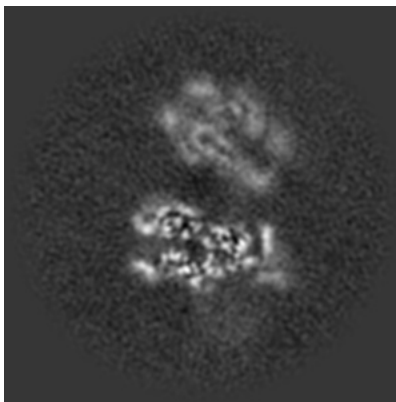
The images above show central slices of the map in three orthogonal directions.

6.3 Largest variance slices [i](#)

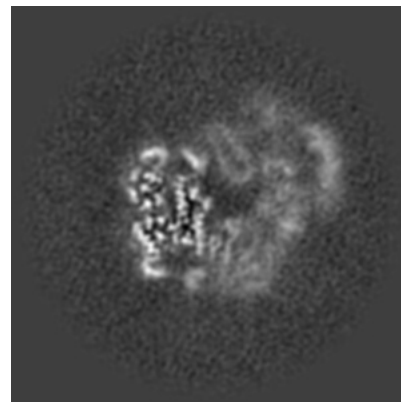
6.3.1 Primary map



X Index: 111



Y Index: 161

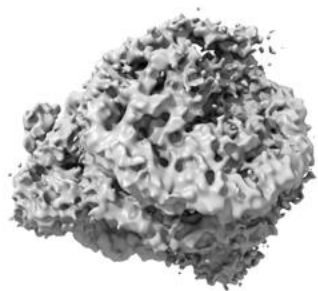


Z Index: 145

The images above show the largest variance slices of the map in three orthogonal directions.

6.4 Orthogonal surface views [i](#)

6.4.1 Primary map



X



Y



Z

The images above show the 3D surface view of the map at the recommended contour level 0.124. These images, in conjunction with the slice images, may facilitate assessment of whether an appropriate contour level has been provided.

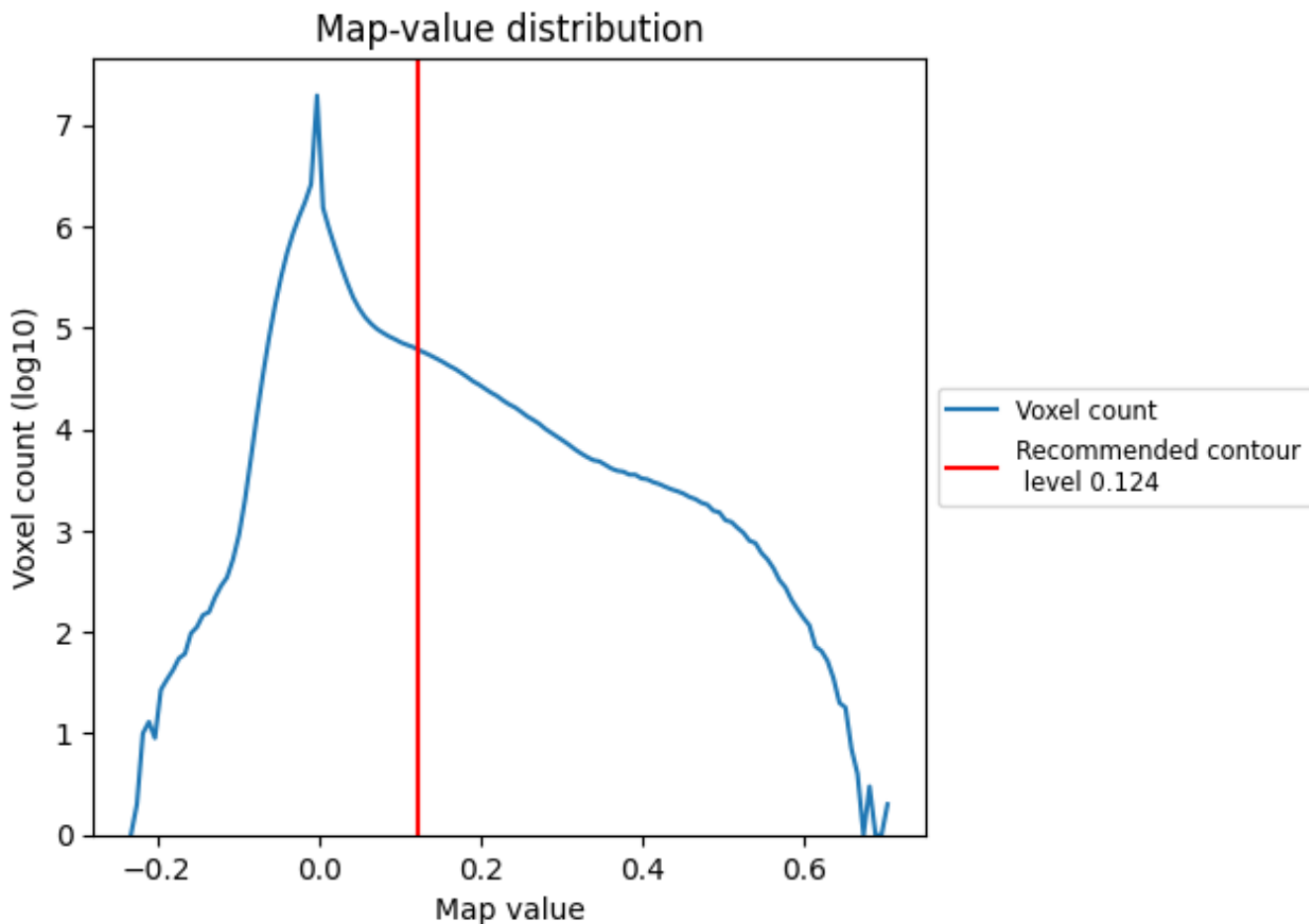
6.5 Mask visualisation

This section was not generated. No masks/segmentation were deposited.

7 Map analysis [i](#)

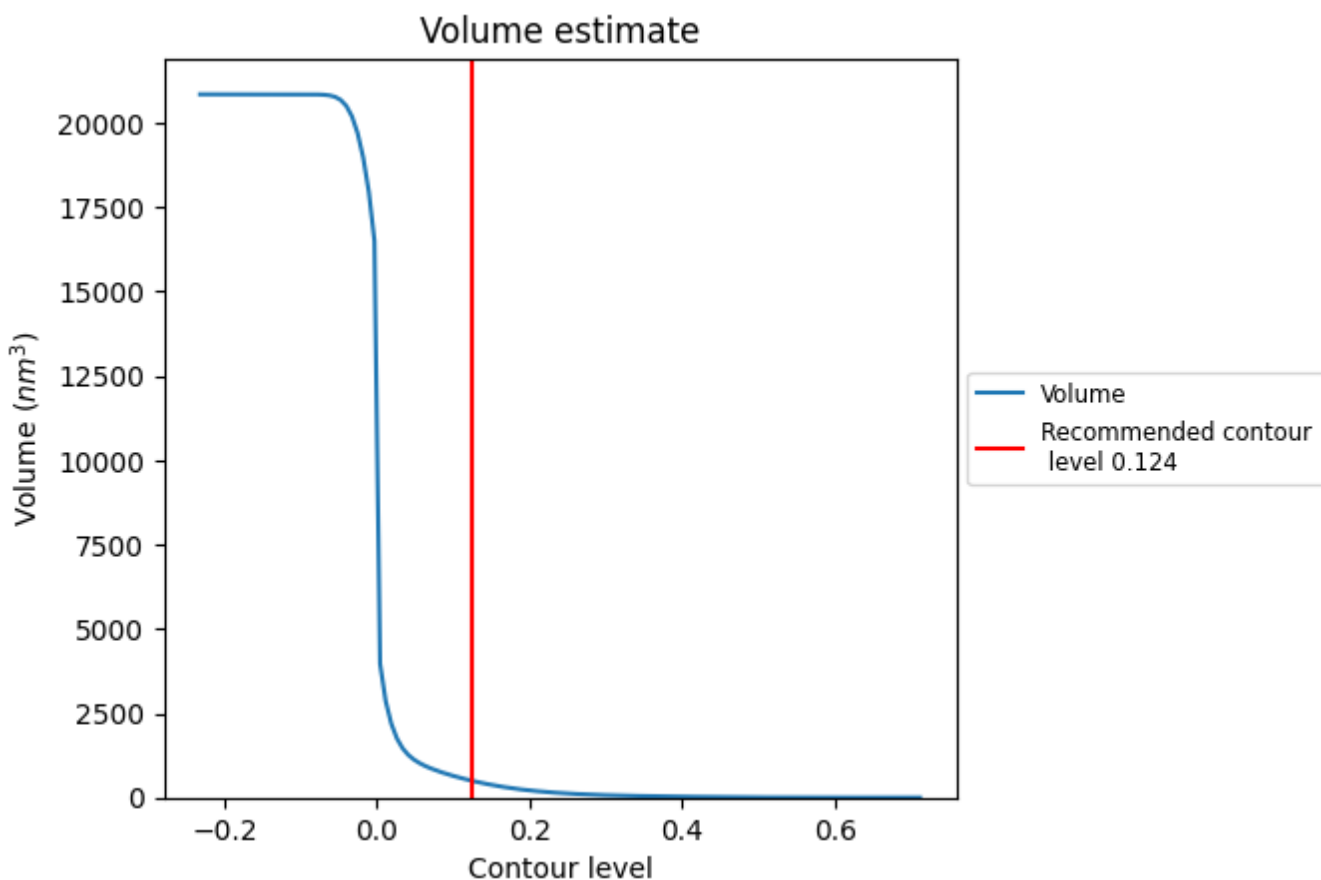
This section contains the results of statistical analysis of the map.

7.1 Map-value distribution [i](#)



The map-value distribution is plotted in 128 intervals along the x-axis. The y-axis is logarithmic. A spike in this graph at zero usually indicates that the volume has been masked.

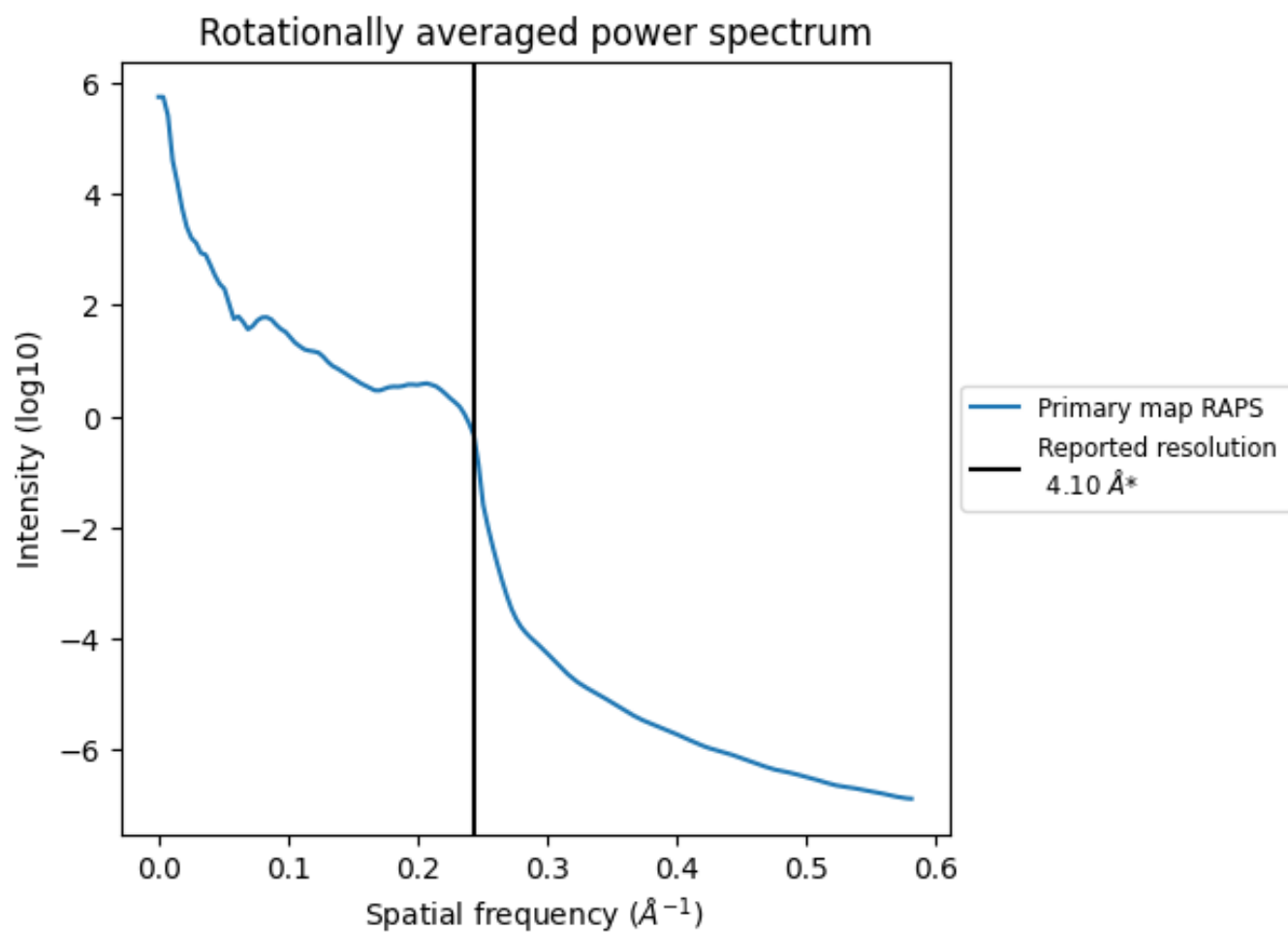
7.2 Volume estimate [i](#)



The volume at the recommended contour level is 500 nm^3 ; this corresponds to an approximate mass of 452 kDa.

The volume estimate graph shows how the enclosed volume varies with the contour level. The recommended contour level is shown as a vertical line and the intersection between the line and the curve gives the volume of the enclosed surface at the given level.

7.3 Rotationally averaged power spectrum [i](#)



*Reported resolution corresponds to spatial frequency of 0.244\AA^{-1}

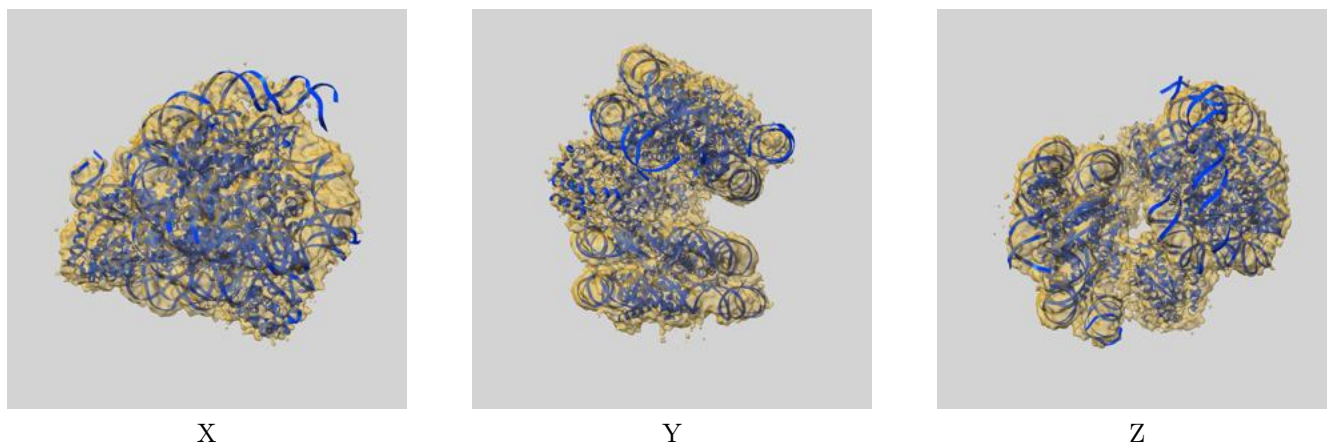
8 Fourier-Shell correlation

This section was not generated. No FSC curve or half-maps provided.

9 Map-model fit [i](#)

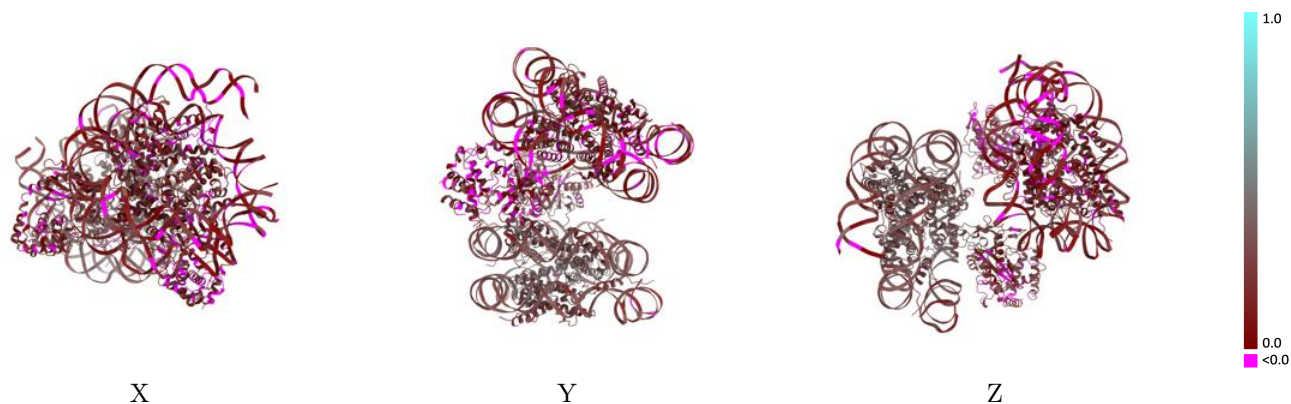
This section contains information regarding the fit between EMDB map EMD-10694 and PDB model 6Y5D. Per-residue inclusion information can be found in section 3 on page 8.

9.1 Map-model overlay [i](#)



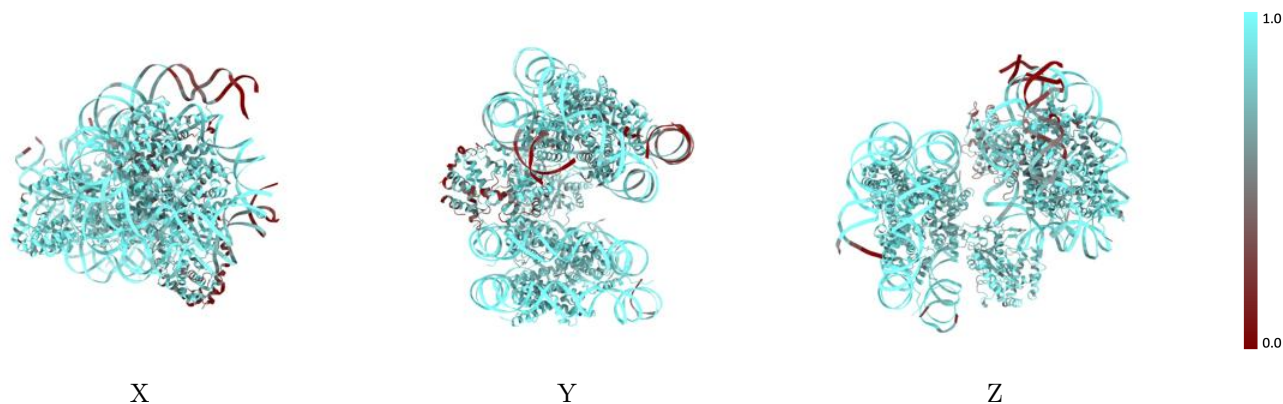
The images above show the 3D surface view of the map at the recommended contour level 0.124 at 50% transparency in yellow overlaid with a ribbon representation of the model coloured in blue. These images allow for the visual assessment of the quality of fit between the atomic model and the map.

9.2 Q-score mapped to coordinate model [i](#)



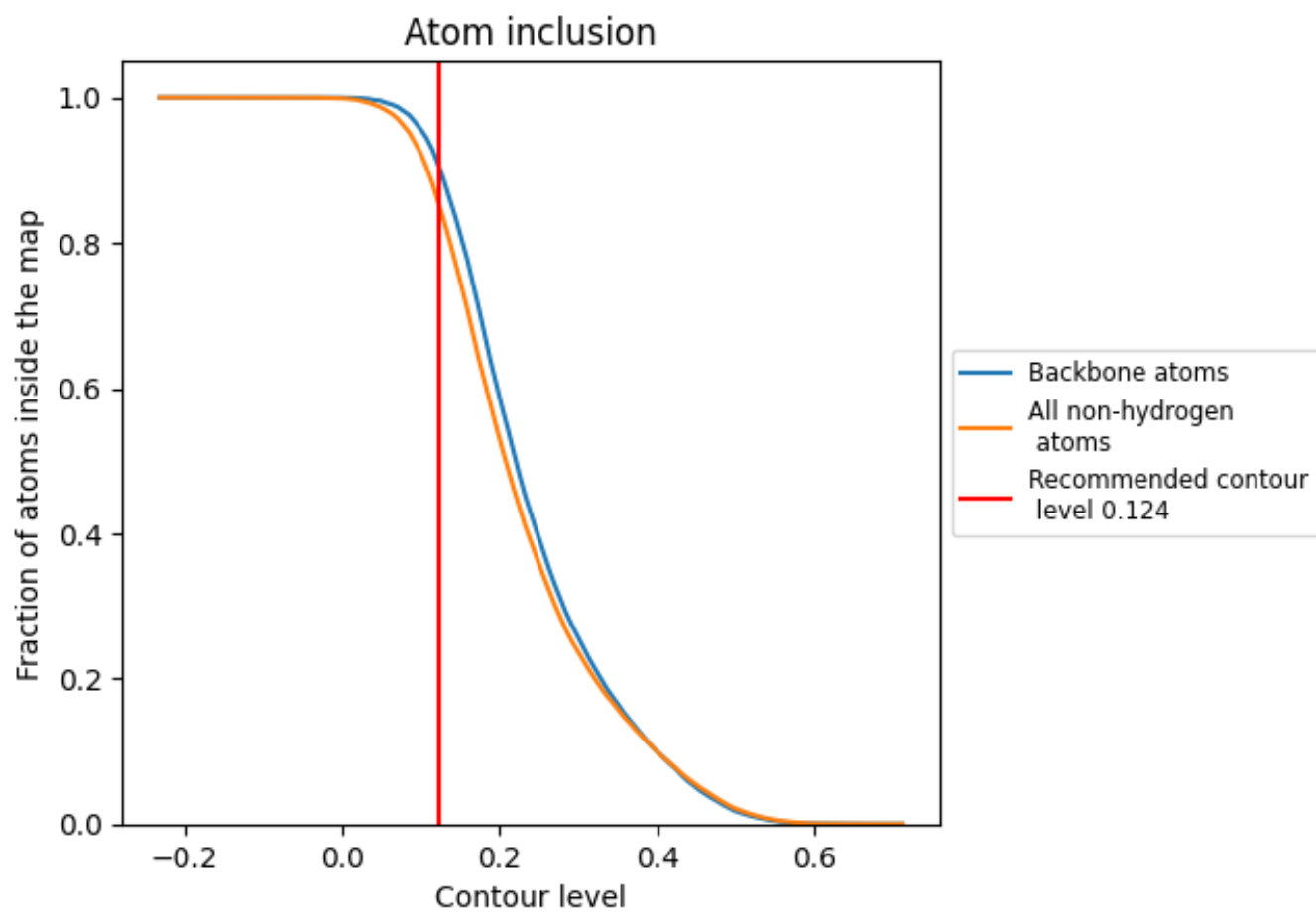
The images above show the model with each residue coloured according to its Q-score. This shows their resolvability in the map with higher Q-score values reflecting better resolvability. Please note: Q-score is calculating the resolvability of atoms, and thus high values are only expected at resolutions at which atoms can be resolved. Low Q-score values may therefore be expected for many entries.

9.3 Atom inclusion mapped to coordinate model [i](#)



The images above show the model with each residue coloured according to its atom inclusion. This shows to what extent they are inside the map at the recommended contour level (0.124).















































9.4 Atom inclusion [i](#)



At the recommended contour level, 90% of all backbone atoms, 85% of all non-hydrogen atoms, are inside the map.

9.5 Map-model fit summary

The table lists the average atom inclusion at the recommended contour level (0.124) and Q-score for the entire model and for each chain.

Chain	Atom inclusion	Q-score
All	 0.8492	 0.1950
A	 0.9216	 0.3290
B	 0.9097	 0.3440
C	 0.9140	 0.3270
D	 0.9123	 0.3070
E	 0.8934	 0.3090
F	 0.8664	 0.3240
G	 0.8792	 0.3140
H	 0.8994	 0.3120
I	 0.9583	 0.2850
J	 0.9731	 0.2750
K	 0.8725	 0.1590
L	 0.6658	 0.0770
M	 0.8614	 0.1680
N	 0.8358	 0.1680
O	 0.8198	 0.1290
P	 0.8404	 0.1540
Q	 0.8089	 0.1090
R	 0.7710	 0.1280
S	 0.8459	 0.1540
T	 0.8755	 0.1790
U	 0.7679	 0.1090
V	 0.7806	 0.1060

