



Full wwPDB X-ray Structure Validation Report ⓘ

Oct 9, 2023 – 12:03 PM EDT

PDB ID : 6WQA
Title : 2.0A angstrom A2a adenosine receptor structure using XFEL data collected in helium atmosphere.
Authors : Lee, M.-Y.; Geiger, J.; Ishchenko, A.; Han, G.W.; Barty, A.; White, T.A.; Gati, C.; Batyuk, A.; Hunter, M.S.; Aquila, A.; Boutet, S.; Weierstall, U.; Cherezov, V.; Liu, W.
Deposited on : 2020-04-28
Resolution : 2.00 Å(reported)

This is a Full wwPDB X-ray Structure Validation Report for a publicly released PDB entry.

We welcome your comments at validation@mail.wwpdb.org

A user guide is available at

<https://www.wwpdb.org/validation/2017/XrayValidationReportHelp>

with specific help available everywhere you see the ⓘ symbol.

The types of validation reports are described at

<http://www.wwpdb.org/validation/2017/FAQs#types>.

The following versions of software and data (see [references](#) ①) were used in the production of this report:

MolProbity : 4.02b-467
Mogul : 1.8.5 (274361), CSD as541be (2020)
Xtrriage (Phenix) : 1.13
EDS : 2.35.1
buster-report : 1.1.7 (2018)
Percentile statistics : 20191225.v01 (using entries in the PDB archive December 25th 2019)
Refmac : 5.8.0158
CCP4 : 7.0.044 (Gargrove)
Ideal geometry (proteins) : Engh & Huber (2001)
Ideal geometry (DNA, RNA) : Parkinson et al. (1996)
Validation Pipeline (wwPDB-VP) : 2.35.1

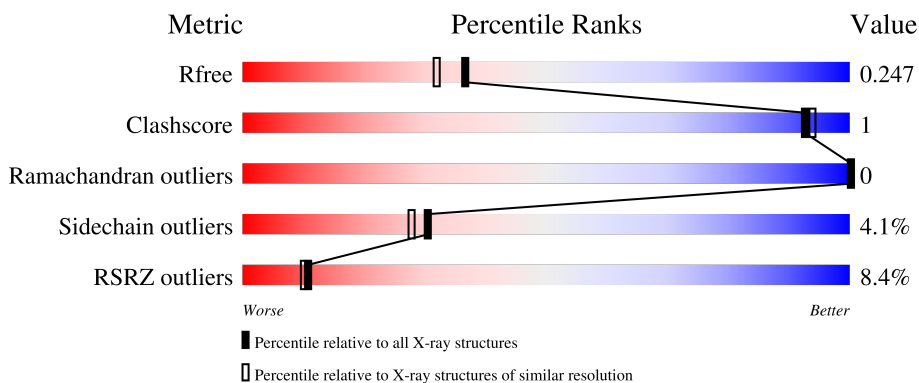
1 Overall quality at a glance i

The following experimental techniques were used to determine the structure:

X-RAY DIFFRACTION

The reported resolution of this entry is 2.00 Å.

Percentile scores (ranging between 0-100) for global validation metrics of the entry are shown in the following graphic. The table shows the number of entries on which the scores are based.



Metric	Whole archive (#Entries)	Similar resolution (#Entries, resolution range(Å))
R_{free}	130704	8085 (2.00-2.00)
Clashscore	141614	9178 (2.00-2.00)
Ramachandran outliers	138981	9054 (2.00-2.00)
Sidechain outliers	138945	9053 (2.00-2.00)
RSRZ outliers	127900	7900 (2.00-2.00)

The table below summarises the geometric issues observed across the polymeric chains and their fit to the electron density. The red, orange, yellow and green segments of the lower bar indicate the fraction of residues that contain outliers for ≥ 3 , 2, 1 and 0 types of geometric quality criteria respectively. A grey segment represents the fraction of residues that are not modelled. The numeric value for each fraction is indicated below the corresponding segment, with a dot representing fractions $\leq 5\%$. The upper red bar (where present) indicates the fraction of residues that have poor fit to the electron density. The numeric value is given above the bar.

Mol	Chain	Length	Quality of chain
1	A	447	<div style="display: flex; align-items: center;"> <div style="width: 7%; height: 10px; background-color: red; margin-right: 5px;"></div> <div style="width: 82%; height: 10px; background-color: green; margin-right: 5px;"></div> <div style="width: 5%; height: 10px; background-color: yellow; margin-right: 5px;"></div> <div style="width: 13%; height: 10px; background-color: grey;"></div> </div>

2 Entry composition [i](#)

There are 9 unique types of molecules in this entry. The entry contains 3500 atoms, of which 23 are hydrogens and 0 are deuteriums.

In the tables below, the ZeroOcc column contains the number of atoms modelled with zero occupancy, the AltConf column contains the number of residues with at least one atom in alternate conformation and the Trace column contains the number of residues modelled with at most 2 atoms.

- Molecule 1 is a protein called Adenosine receptor A2a/Soluble cytochrome b562 chimera.

Mol	Chain	Residues	Atoms					ZeroOcc	AltConf	Trace
			Total	C	N	O	S			
1	A	391	2978	1942	499	516	21	0	6	0

There are 39 discrepancies between the modelled and reference sequences:

Chain	Residue	Modelled	Actual	Comment	Reference
A	-24	MET	-	initiating methionine	UNP P29274
A	-23	LYS	-	expression tag	UNP P29274
A	-22	THR	-	expression tag	UNP P29274
A	-21	ILE	-	expression tag	UNP P29274
A	-20	ILE	-	expression tag	UNP P29274
A	-19	ALA	-	expression tag	UNP P29274
A	-18	LEU	-	expression tag	UNP P29274
A	-17	SER	-	expression tag	UNP P29274
A	-16	TYR	-	expression tag	UNP P29274
A	-15	ILE	-	expression tag	UNP P29274
A	-14	PHE	-	expression tag	UNP P29274
A	-13	CYS	-	expression tag	UNP P29274
A	-12	LEU	-	expression tag	UNP P29274
A	-11	VAL	-	expression tag	UNP P29274
A	-10	PHE	-	expression tag	UNP P29274
A	-9	ALA	-	expression tag	UNP P29274
A	-8	ASP	-	expression tag	UNP P29274
A	-7	TYR	-	expression tag	UNP P29274
A	-6	LYS	-	expression tag	UNP P29274
A	-5	ASP	-	expression tag	UNP P29274
A	-4	ASP	-	expression tag	UNP P29274
A	-3	ASP	-	expression tag	UNP P29274
A	-2	ASP	-	expression tag	UNP P29274
A	-1	GLY	-	expression tag	UNP P29274
A	0	ALA	-	expression tag	UNP P29274
A	1	PRO	-	expression tag	UNP P29274
A	1007	TRP	MET	conflict	UNP P0ABE7

Continued on next page...

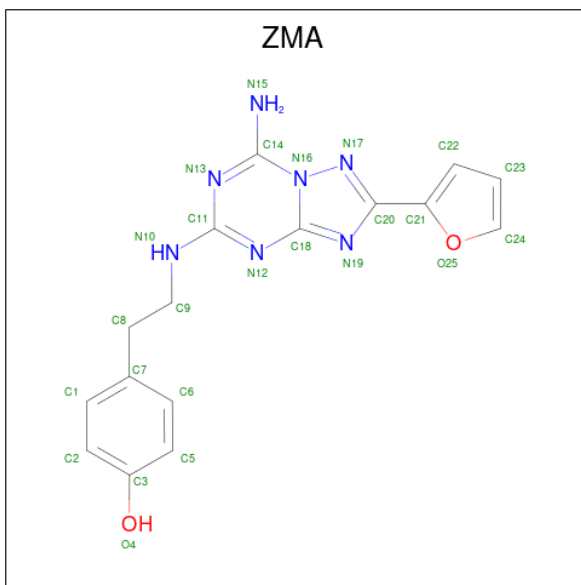
Continued from previous page...

Chain	Residue	Modelled	Actual	Comment	Reference
A	1102	ILE	HIS	conflict	UNP P0ABE7
A	1106	LEU	-	linker	UNP P0ABE7
A	317	HIS	-	expression tag	UNP P29274
A	318	HIS	-	expression tag	UNP P29274
A	319	HIS	-	expression tag	UNP P29274
A	320	HIS	-	expression tag	UNP P29274
A	321	HIS	-	expression tag	UNP P29274
A	322	HIS	-	expression tag	UNP P29274
A	323	HIS	-	expression tag	UNP P29274
A	324	HIS	-	expression tag	UNP P29274
A	325	HIS	-	expression tag	UNP P29274
A	326	HIS	-	expression tag	UNP P29274

- Molecule 2 is SODIUM ION (three-letter code: NA) (formula: Na).

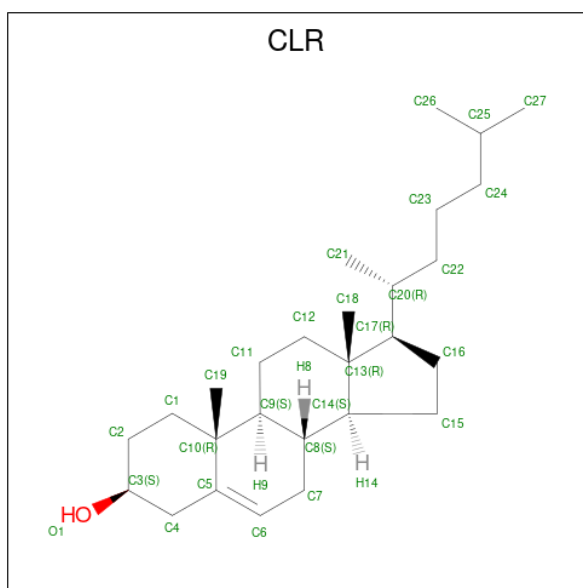
Mol	Chain	Residues	Atoms	ZeroOcc	AltConf
2	A	1	Total Na 1 1	0	0

- Molecule 3 is 4-{2-[(7-amino-2-furan-2-yl)[1,2,4]triazolo[1,5-a][1,3,5]triazin-5-yl)amino]ethyl}phenol (three-letter code: ZMA) (formula: C₁₆H₁₅N₇O₂).



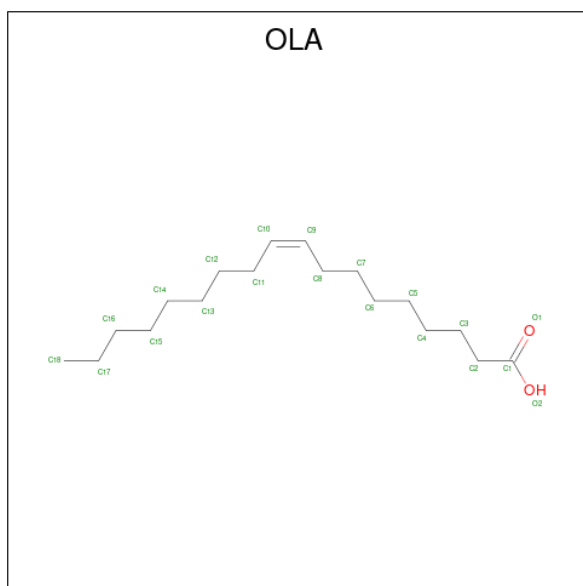
Mol	Chain	Residues	Atoms	ZeroOcc	AltConf
3	A	1	Total C N O 25 16 7 2	0	0

- Molecule 4 is CHOLESTEROL (three-letter code: CLR) (formula: $C_{27}H_{46}O$).



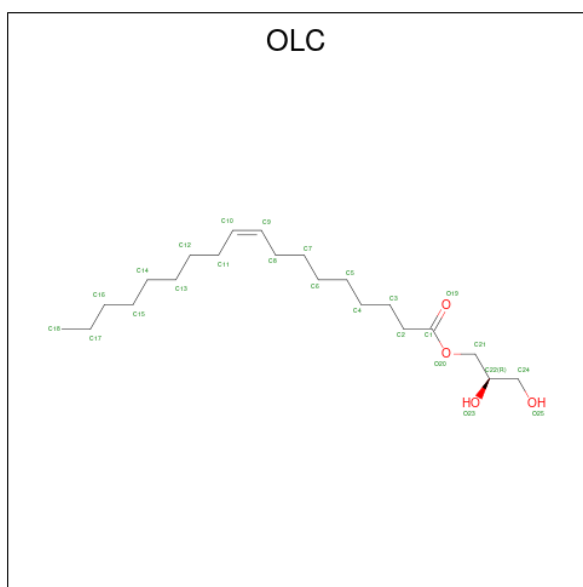
Mol	Chain	Residues	Atoms	ZeroOcc	AltConf
4	A	1	Total C O 28 27 1	0	0
4	A	1	Total C O 28 27 1	0	0
4	A	1	Total C O 28 27 1	0	0

- Molecule 5 is OLEIC ACID (three-letter code: OLA) (formula: $C_{18}H_{34}O_2$).



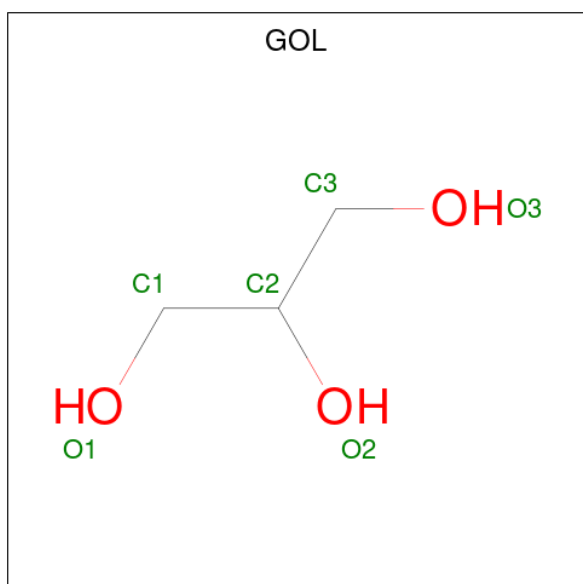
Mol	Chain	Residues	Atoms			ZeroOcc	AltConf
5	A	1	Total	C	O	0	0
			13	11	2		
5	A	1	Total	C	O	0	0
			9	7	2		
5	A	1	Total	C	O	0	0
			18	16	2		
5	A	1	Total	C	O	0	0
			10	8	2		
5	A	1	Total	C	O	0	0
			18	16	2		
5	A	1	Total	C	O	0	0
			20	18	2		
5	A	1	Total	C	O	0	0
			11	9	2		
5	A	1	Total	C	O	0	0
			13	11	2		
5	A	1	Total	C	O	0	0
			12	10	2		
5	A	1	Total	C	O	0	0
			9	7	2		
5	A	1	Total	C	O	0	0
			10	8	2		
5	A	1	Total	C	O	0	0
			15	13	2		
5	A	1	Total	C	O	0	0
			11	9	2		
5	A	1	Total	C	O	0	0
			14	12	2		
5	A	1	Total	C	O	0	0
			9	7	2		

- Molecule 6 is (2R)-2,3-dihydroxypropyl (9Z)-octadec-9-enoate (three-letter code: OLC) (formula: C₂₁H₄₀O₄).



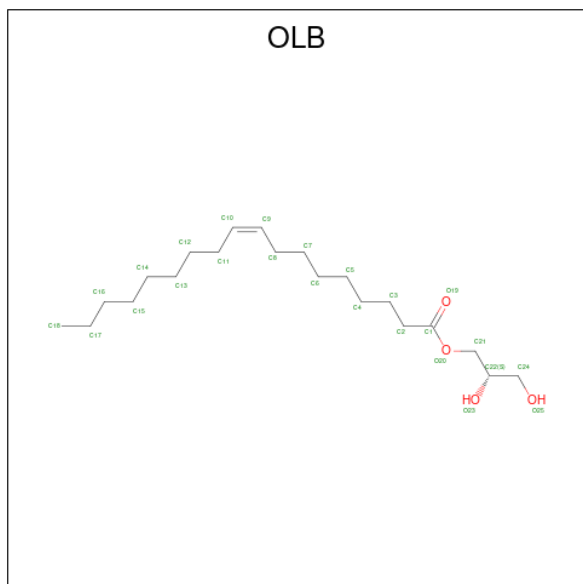
Mol	Chain	Residues	Atoms	ZeroOcc	AltConf
6	A	1	Total C O 17 13 4	0	0
6	A	1	Total C O 22 18 4	0	0
6	A	1	Total C 14 14	0	0
6	A	1	Total C O 19 15 4	0	0
6	A	1	Total C H O 40 13 23 4	0	0

- Molecule 7 is GLYCEROL (three-letter code: GOL) (formula: C₃H₈O₃).



Mol	Chain	Residues	Atoms		ZeroOcc	AltConf
7	A	1	Total	C O	0	0
			6	3 3		

- Molecule 8 is (2S)-2,3-dihydroxypropyl (9Z)-octadec-9-enoate (three-letter code: OLB) (formula: C₂₁H₄₀O₄).



Mol	Chain	Residues	Atoms		ZeroOcc	AltConf
8	A	1	Total	C O	0	0
			18	14 4		


- Molecule 9 is water.

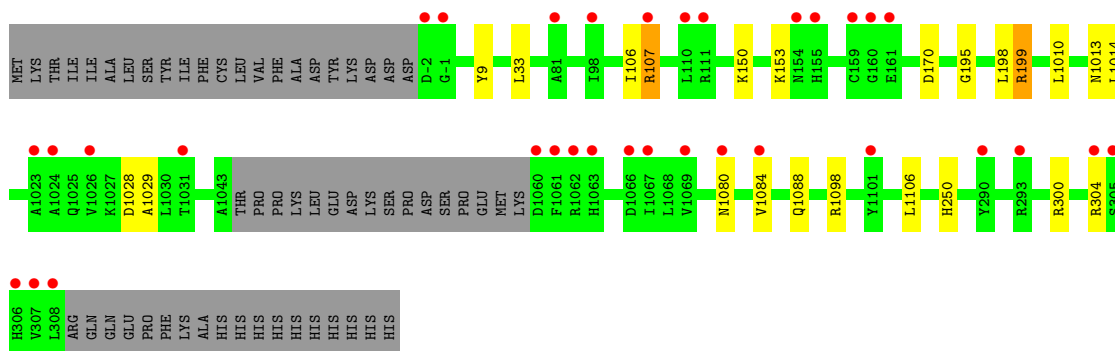
Mol	Chain	Residues	Atoms		ZeroOcc	AltConf
9	A	84	Total	O	0	0
			84	84		

3 Residue-property plots [i](#)

These plots are drawn for all protein, RNA, DNA and oligosaccharide chains in the entry. The first graphic for a chain summarises the proportions of the various outlier classes displayed in the second graphic. The second graphic shows the sequence view annotated by issues in geometry and electron density. Residues are color-coded according to the number of geometric quality criteria for which they contain at least one outlier: green = 0, yellow = 1, orange = 2 and red = 3 or more. A red dot above a residue indicates a poor fit to the electron density ($RSRZ > 2$). Stretches of 2 or more consecutive residues without any outlier are shown as a green connector. Residues present in the sample, but not in the model, are shown in grey.

- Molecule 1: Adenosine receptor A2a/Soluble cytochrome b562 chimera

Chain A: 



4 Data and refinement statistics

Property	Value	Source
Space group	C 2 2 21	Depositor
Cell constants a, b, c, α , β , γ	40.35Å 180.50Å 142.70Å 90.00° 90.00° 90.00°	Depositor
Resolution (Å)	27.70 – 2.00 27.21 – 2.00	Depositor EDS
% Data completeness (in resolution range)	100.0 (27.70-2.00) 100.0 (27.21-2.00)	Depositor EDS
R_{merge}	(Not available)	Depositor
R_{sym}	(Not available)	Depositor
$\langle I/\sigma(I) \rangle$ ¹	1.15 (at 1.99Å)	Xtrriage
Refinement program	BUSTER 2.10.2	Depositor
R, R_{free}	0.193 , 0.216 0.213 , 0.247	Depositor DCC
R_{free} test set	2000 reflections (5.58%)	wwPDB-VP
Wilson B-factor (Å ²)	33.3	Xtrriage
Anisotropy	0.094	Xtrriage
Bulk solvent k_{sol} (e/Å ³), B_{sol} (Å ²)	0.34 , 87.7	EDS
L-test for twinning ²	$\langle L \rangle = 0.48$, $\langle L^2 \rangle = 0.32$	Xtrriage
Estimated twinning fraction	No twinning to report.	Xtrriage
F_o, F_c correlation	0.95	EDS
Total number of atoms	3500	wwPDB-VP
Average B, all atoms (Å ²)	48.0	wwPDB-VP

Xtrriage's analysis on translational NCS is as follows: *The largest off-origin peak in the Patterson function is 6.14% of the height of the origin peak. No significant pseudotranslation is detected.*

¹Intensities estimated from amplitudes.

²Theoretical values of $\langle |L| \rangle$, $\langle L^2 \rangle$ for acentric reflections are 0.5, 0.333 respectively for untwinned datasets, and 0.375, 0.2 for perfectly twinned datasets.

5 Model quality [i](#)

5.1 Standard geometry [i](#)

Bond lengths and bond angles in the following residue types are not validated in this section: OLB, ZMA, GOL, OLC, CLR, NA, OLA

The Z score for a bond length (or angle) is the number of standard deviations the observed value is removed from the expected value. A bond length (or angle) with $|Z| > 5$ is considered an outlier worth inspection. RMSZ is the root-mean-square of all Z scores of the bond lengths (or angles).

Mol	Chain	Bond lengths		Bond angles	
		RMSZ	# Z >5	RMSZ	# Z >5
1	A	0.50	0/3042	0.55	0/4158

There are no bond length outliers.

There are no bond angle outliers.

There are no chirality outliers.

There are no planarity outliers.

5.2 Too-close contacts [i](#)

In the following table, the Non-H and H(model) columns list the number of non-hydrogen atoms and hydrogen atoms in the chain respectively. The H(added) column lists the number of hydrogen atoms added and optimized by MolProbity. The Clashes column lists the number of clashes within the asymmetric unit, whereas Symm-Clashes lists symmetry-related clashes.

Mol	Chain	Non-H	H(model)	H(added)	Clashes	Symm-Clashes
1	A	2978	0	2946	8	0
2	A	1	0	0	0	0
3	A	25	0	14	1	0
4	A	84	0	138	1	0
5	A	192	0	252	2	0
6	A	89	23	122	1	0
7	A	6	0	8	0	0
8	A	18	0	23	1	0
9	A	84	0	0	0	0
All	All	3477	23	3503	10	0

The all-atom clashscore is defined as the number of clashes found per 1000 atoms (including hydrogen atoms). The all-atom clashscore for this structure is 1.

All (10) close contacts within the same asymmetric unit are listed below, sorted by their clash magnitude.

Atom-1	Atom-2	Interatomic distance (Å)	Clash overlap (Å)
4:A:1217:CLR:H3	6:A:1227:OLC:H24A	1.66	0.78
1:A:250:HIS:CE1	3:A:1202:ZMA:H24	2.40	0.56
1:A:1084:VAL:HG22	1:A:1088:GLN:HE21	1.79	0.48
5:A:1221:OLA:H121	8:A:1223:OLB:H221	1.96	0.46
1:A:300:ARG:O	1:A:304:ARG:HG2	2.15	0.46
1:A:1013:ASN:HD22	1:A:1029:ALA:HA	1.82	0.44
1:A:153:LYS:HE3	1:A:170:ASP:OD2	2.20	0.42
1:A:195:GLY:O	1:A:199:ARG:HD2	2.20	0.41
1:A:107:ARG:HD3	1:A:107:ARG:HA	1.86	0.41
1:A:9:TYR:HB2	5:A:1208:OLA:H41	2.03	0.40

There are no symmetry-related clashes.

5.3 Torsion angles [i](#)

5.3.1 Protein backbone [i](#)

In the following table, the Percentiles column shows the percent Ramachandran outliers of the chain as a percentile score with respect to all X-ray entries followed by that with respect to entries of similar resolution.

The Analysed column shows the number of residues for which the backbone conformation was analysed, and the total number of residues.

Mol	Chain	Analysed	Favoured	Allowed	Outliers	Percentiles
1	A	393/447 (88%)	386 (98%)	7 (2%)	0	100 100

There are no Ramachandran outliers to report.

5.3.2 Protein sidechains [i](#)

In the following table, the Percentiles column shows the percent sidechain outliers of the chain as a percentile score with respect to all X-ray entries followed by that with respect to entries of similar resolution.

The Analysed column shows the number of residues for which the sidechain conformation was analysed, and the total number of residues.

Mol	Chain	Analysed	Rotameric	Outliers	Percentiles
1	A	299/374 (80%)	287 (96%)	12 (4%)	31 29

All (12) residues with a non-rotameric sidechain are listed below:

Mol	Chain	Res	Type
1	A	33	LEU
1	A	106	ILE
1	A	107	ARG
1	A	150	LYS
1	A	198	LEU
1	A	199	ARG
1	A	1010	LEU
1	A	1014	LEU
1	A	1028	ASP
1	A	1080	ASN
1	A	1098	ARG
1	A	1106	LEU

Sometimes sidechains can be flipped to improve hydrogen bonding and reduce clashes. All (2) such sidechains are listed below:

Mol	Chain	Res	Type
1	A	1013	ASN
1	A	1088	GLN

5.3.3 RNA [i](#)

There are no RNA molecules in this entry.

5.4 Non-standard residues in protein, DNA, RNA chains [i](#)

There are no non-standard protein/DNA/RNA residues in this entry.

5.5 Carbohydrates [i](#)

There are no monosaccharides in this entry.

5.6 Ligand geometry [i](#)

Of 27 ligands modelled in this entry, 1 is monoatomic - leaving 26 for Mogul analysis.

In the following table, the Counts columns list the number of bonds (or angles) for which Mogul statistics could be retrieved, the number of bonds (or angles) that are observed in the model and the number of bonds (or angles) that are defined in the Chemical Component Dictionary. The Link column lists molecule types, if any, to which the group is linked. The Z score for a bond length (or angle) is the number of standard deviations the observed value is removed from the expected value. A bond length (or angle) with $|Z| > 2$ is considered an outlier worth inspection. RMSZ is the root-mean-square of all Z scores of the bond lengths (or angles).

Mol	Type	Chain	Res	Link	Bond lengths			Bond angles		
					Counts	RMSZ	# $ Z > 2$	Counts	RMSZ	# $ Z > 2$
5	OLA	A	1224	-	13,13,19	0.60	0	12,13,19	0.99	0
5	OLA	A	1204	-	12,12,19	0.64	0	12,12,19	1.01	0
5	OLA	A	1220	-	9,9,19	0.67	0	9,9,19	1.12	0
4	CLR	A	1217	-	31,31,31	0.60	0	48,48,48	0.96	3 (6%)
5	OLA	A	1208	-	17,17,19	0.51	0	17,17,19	0.90	1 (5%)
5	OLA	A	1206	-	17,17,19	0.51	0	17,17,19	0.91	1 (5%)
3	ZMA	A	1202	-	21,28,28	0.71	0	20,39,39	2.52	4 (20%)
6	OLC	A	1211	-	16,16,24	0.39	0	17,17,25	1.03	1 (5%)
5	OLA	A	1205	-	8,8,19	0.72	0	8,8,19	1.14	1 (12%)
6	OLC	A	1215	-	21,21,24	0.31	0	22,22,25	0.88	1 (4%)
5	OLA	A	1222	-	10,10,19	0.65	0	10,10,19	1.08	1 (10%)
5	OLA	A	1214	-	11,11,19	0.65	0	11,11,19	1.17	1 (9%)
5	OLA	A	1209	-	19,19,19	0.49	0	19,19,19	0.97	2 (10%)
7	GOL	A	1213	-	5,5,5	0.05	0	5,5,5	0.15	0
5	OLA	A	1210	-	10,10,19	0.59	0	10,10,19	1.23	1 (10%)
5	OLA	A	1219	-	8,8,19	0.67	0	8,8,19	1.36	2 (25%)
6	OLC	A	1227	-	16,16,24	1.03	2 (12%)	17,17,25	1.42	2 (11%)
6	OLC	A	1226	-	18,18,24	0.37	0	18,19,25	0.91	1 (5%)
5	OLA	A	1221	-	14,14,19	0.60	0	14,14,19	0.91	1 (7%)
4	CLR	A	1216	-	31,31,31	0.66	0	48,48,48	1.25	6 (12%)
4	CLR	A	1203	-	31,31,31	0.64	0	48,48,48	1.09	3 (6%)
6	OLC	A	1218	-	13,13,24	0.30	0	12,12,25	0.41	0
5	OLA	A	1212	-	12,12,19	0.66	0	12,12,19	1.05	2 (16%)
8	OLB	A	1223	-	17,17,24	0.37	0	18,18,25	0.99	1 (5%)
5	OLA	A	1225	-	8,8,19	0.70	0	8,8,19	1.23	1 (12%)
5	OLA	A	1207	-	9,9,19	0.67	0	9,9,19	1.09	1 (11%)

In the following table, the Chirals column lists the number of chiral outliers, the number of chiral centers analysed, the number of these observed in the model and the number defined in the Chemical Component Dictionary. Similar counts are reported in the Torsion and Rings columns.

'-' means no outliers of that kind were identified.

Mol	Type	Chain	Res	Link	Chirals	Torsions	Rings
5	OLA	A	1224	-	-	7/11/11/17	-
5	OLA	A	1204	-	-	6/10/10/17	-
5	OLA	A	1220	-	-	6/7/7/17	-
4	CLR	A	1217	-	-	3/10/68/68	0/4/4/4
5	OLA	A	1208	-	-	12/15/15/17	-
5	OLA	A	1206	-	-	9/15/15/17	-
3	ZMA	A	1202	-	-	0/6/10/10	0/4/4/4
6	OLC	A	1211	-	-	12/16/16/24	-
5	OLA	A	1205	-	-	3/6/6/17	-
6	OLC	A	1215	-	-	8/21/21/24	-
5	OLA	A	1222	-	-	3/8/8/17	-
5	OLA	A	1214	-	-	5/9/9/17	-
5	OLA	A	1209	-	-	13/17/17/17	-
7	GOL	A	1213	-	-	0/4/4/4	-
5	OLA	A	1210	-	-	4/8/8/17	-
5	OLA	A	1219	-	-	5/6/6/17	-
6	OLC	A	1227	-	-	2/16/16/24	-
6	OLC	A	1226	-	-	10/18/18/24	-
5	OLA	A	1221	-	-	3/12/12/17	-
4	CLR	A	1216	-	-	3/10/68/68	0/4/4/4
4	CLR	A	1203	-	-	2/10/68/68	0/4/4/4
6	OLC	A	1218	-	-	7/11/11/24	-
5	OLA	A	1212	-	-	4/10/10/17	-
8	OLB	A	1223	-	-	7/17/17/24	-
5	OLA	A	1225	-	-	2/6/6/17	-
5	OLA	A	1207	-	-	4/7/7/17	-

All (2) bond length outliers are listed below:

Mol	Chain	Res	Type	Atoms	Z	Observed(Å)	Ideal(Å)
6	A	1227	OLC	O20-C1	2.96	1.42	1.33
6	A	1227	OLC	O20-C21	-2.01	1.40	1.45

All (37) bond angle outliers are listed below:

Mol	Chain	Res	Type	Atoms	Z	Observed(°)	Ideal(°)
3	A	1202	ZMA	N15-C14-N16	8.35	123.59	117.97
3	A	1202	ZMA	C23-C22-C21	-4.42	102.61	108.39
3	A	1202	ZMA	N12-C11-N13	-3.95	119.98	126.23
4	A	1216	CLR	C4-C5-C10	3.71	121.34	116.42
6	A	1227	OLC	O20-C1-C2	3.53	122.98	111.91
4	A	1216	CLR	C1-C2-C3	3.14	114.50	110.47
4	A	1216	CLR	C4-C5-C6	-3.04	116.23	120.61
4	A	1217	CLR	C4-C5-C10	2.91	120.28	116.42
4	A	1203	CLR	C7-C8-C14	2.78	114.93	110.91
6	A	1211	OLC	O20-C1-C2	2.74	120.49	111.91
6	A	1227	OLC	O20-C1-O19	-2.66	116.88	123.59
6	A	1215	OLC	O20-C1-C2	2.62	120.13	111.91
8	A	1223	OLB	O20-C1-C2	2.61	120.08	111.91
4	A	1216	CLR	C7-C8-C14	2.52	114.55	110.91
4	A	1217	CLR	C4-C5-C6	-2.50	117.00	120.61
4	A	1203	CLR	C21-C20-C22	-2.43	106.55	110.36
5	A	1219	OLA	O2-C1-C2	2.42	121.80	114.03
5	A	1225	OLA	O2-C1-C2	2.38	121.68	114.03
6	A	1226	OLC	O20-C1-C2	2.37	119.35	111.91
5	A	1221	OLA	O2-C1-O1	-2.24	117.71	123.30
4	A	1216	CLR	C21-C20-C22	-2.23	106.86	110.36
5	A	1214	OLA	O2-C1-C2	2.22	121.15	114.03
5	A	1210	OLA	O2-C1-C2	2.21	121.13	114.03
5	A	1209	OLA	O2-C1-C2	2.19	121.07	114.03
5	A	1205	OLA	O2-C1-O1	-2.18	117.86	123.30
4	A	1203	CLR	C4-C5-C10	2.18	119.31	116.42
3	A	1202	ZMA	C9-C8-C7	-2.16	107.87	112.87
5	A	1219	OLA	O2-C1-O1	-2.15	117.95	123.30
4	A	1217	CLR	C1-C2-C3	2.12	113.19	110.47
5	A	1207	OLA	O2-C1-O1	-2.12	118.02	123.30
4	A	1216	CLR	C12-C11-C9	2.09	116.73	113.11
5	A	1206	OLA	O2-C1-O1	-2.09	118.10	123.30
5	A	1212	OLA	O2-C1-O1	-2.09	118.10	123.30
5	A	1209	OLA	C3-C2-C1	-2.06	109.28	114.47
5	A	1212	OLA	O2-C1-C2	2.05	120.62	114.03
5	A	1208	OLA	O2-C1-C2	2.04	120.59	114.03
5	A	1222	OLA	O2-C1-O1	-2.02	118.27	123.30

There are no chirality outliers.

All (140) torsion outliers are listed below:

Mol	Chain	Res	Type	Atoms
5	A	1221	OLA	C10-C11-C12-C13

Continued on next page...

Continued from previous page...

Mol	Chain	Res	Type	Atoms
5	A	1224	OLA	C9-C10-C11-C12
6	A	1211	OLC	C21-C22-C24-O25
6	A	1226	OLC	C21-C22-C24-O25
6	A	1215	OLC	O19-C1-O20-C21
6	A	1215	OLC	C2-C1-O20-C21
6	A	1211	OLC	C2-C1-O20-C21
6	A	1226	OLC	C2-C1-O20-C21
6	A	1226	OLC	O19-C1-O20-C21
6	A	1211	OLC	C1-C2-C3-C4
6	A	1226	OLC	C1-C2-C3-C4
5	A	1208	OLA	C1-C2-C3-C4
5	A	1212	OLA	C1-C2-C3-C4
5	A	1214	OLA	C1-C2-C3-C4
5	A	1221	OLA	C1-C2-C3-C4
6	A	1215	OLC	C1-C2-C3-C4
6	A	1211	OLC	O19-C1-O20-C21
6	A	1226	OLC	O20-C21-C22-O23
8	A	1223	OLB	C2-C1-O20-C21
5	A	1219	OLA	C3-C4-C5-C6
5	A	1210	OLA	C4-C5-C6-C7
6	A	1215	OLC	C11-C12-C13-C14
6	A	1226	OLC	O20-C21-C22-C24
5	A	1209	OLA	C4-C5-C6-C7
6	A	1215	OLC	C2-C3-C4-C5
5	A	1212	OLA	C5-C6-C7-C8
5	A	1204	OLA	C2-C3-C4-C5
4	A	1216	CLR	C23-C24-C25-C27
5	A	1224	OLA	C4-C5-C6-C7
6	A	1215	OLC	C3-C4-C5-C6
5	A	1206	OLA	C12-C13-C14-C15
5	A	1207	OLA	C2-C3-C4-C5
5	A	1224	OLA	C2-C3-C4-C5
8	A	1223	OLB	C2-C3-C4-C5
5	A	1209	OLA	C5-C6-C7-C8
5	A	1221	OLA	C4-C5-C6-C7
5	A	1208	OLA	C6-C7-C8-C9
5	A	1204	OLA	C5-C6-C7-C8
5	A	1206	OLA	C5-C6-C7-C8
6	A	1226	OLC	C5-C6-C7-C8
5	A	1204	OLA	C4-C5-C6-C7
6	A	1211	OLC	C5-C6-C7-C8
5	A	1220	OLA	C4-C5-C6-C7

Continued on next page...

Continued from previous page...

Mol	Chain	Res	Type	Atoms
5	A	1208	OLA	C4-C5-C6-C7
8	A	1223	OLB	C3-C4-C5-C6
5	A	1208	OLA	C2-C3-C4-C5
5	A	1208	OLA	C10-C11-C12-C13
6	A	1215	OLC	C10-C11-C12-C13
4	A	1216	CLR	C23-C24-C25-C26
8	A	1223	OLB	O19-C1-O20-C21
5	A	1209	OLA	C13-C14-C15-C16
5	A	1208	OLA	C12-C13-C14-C15
6	A	1218	OLC	C3-C4-C5-C6
6	A	1226	OLC	C2-C3-C4-C5
5	A	1207	OLA	C1-C2-C3-C4
5	A	1207	OLA	C4-C5-C6-C7
4	A	1217	CLR	C20-C22-C23-C24
6	A	1226	OLC	C3-C4-C5-C6
5	A	1219	OLA	C1-C2-C3-C4
4	A	1217	CLR	C23-C24-C25-C27
4	A	1216	CLR	C22-C23-C24-C25
5	A	1214	OLA	C3-C4-C5-C6
5	A	1206	OLA	C10-C11-C12-C13
8	A	1223	OLB	C1-C2-C3-C4
5	A	1225	OLA	C3-C4-C5-C6
4	A	1217	CLR	C23-C24-C25-C26
5	A	1208	OLA	C3-C4-C5-C6
5	A	1210	OLA	C1-C2-C3-C4
5	A	1224	OLA	C3-C4-C5-C6
5	A	1214	OLA	C4-C5-C6-C7
5	A	1209	OLA	C15-C16-C17-C18
5	A	1206	OLA	C13-C14-C15-C16
6	A	1211	OLC	O23-C22-C24-O25
6	A	1226	OLC	O23-C22-C24-O25
5	A	1209	OLA	C10-C11-C12-C13
6	A	1211	OLC	O20-C21-C22-O23
5	A	1209	OLA	C11-C12-C13-C14
6	A	1211	OLC	C3-C4-C5-C6
5	A	1208	OLA	C13-C14-C15-C16
5	A	1220	OLA	C3-C4-C5-C6
6	A	1218	OLC	C5-C6-C7-C8
5	A	1220	OLA	C2-C3-C4-C5
5	A	1209	OLA	C12-C13-C14-C15
5	A	1224	OLA	C5-C6-C7-C8
6	A	1218	OLC	C4-C5-C6-C7

Continued on next page...

Continued from previous page...

Mol	Chain	Res	Type	Atoms
6	A	1218	OLC	C11-C12-C13-C14
6	A	1218	OLC	C2-C3-C4-C5
5	A	1222	OLA	C4-C5-C6-C7
8	A	1223	OLB	C5-C6-C7-C8
5	A	1222	OLA	C6-C7-C8-C9
5	A	1204	OLA	C6-C7-C8-C9
4	A	1203	CLR	C23-C24-C25-C27
6	A	1227	OLC	C7-C8-C9-C10
5	A	1219	OLA	C2-C3-C4-C5
6	A	1227	OLC	C6-C7-C8-C9
5	A	1209	OLA	C1-C2-C3-C4
5	A	1207	OLA	C5-C6-C7-C8
4	A	1203	CLR	C23-C24-C25-C26
5	A	1206	OLA	C2-C3-C4-C5
5	A	1206	OLA	C11-C12-C13-C14
5	A	1206	OLA	C4-C5-C6-C7
5	A	1214	OLA	O1-C1-C2-C3
5	A	1208	OLA	O2-C1-C2-C3
5	A	1209	OLA	O2-C1-C2-C3
6	A	1218	OLC	C6-C7-C8-C9
5	A	1210	OLA	O1-C1-C2-C3
5	A	1209	OLA	C9-C10-C11-C12
5	A	1219	OLA	O1-C1-C2-C3
5	A	1219	OLA	O2-C1-C2-C3
5	A	1210	OLA	O2-C1-C2-C3
5	A	1222	OLA	C5-C6-C7-C8
5	A	1220	OLA	O1-C1-C2-C3
5	A	1224	OLA	O1-C1-C2-C3
5	A	1208	OLA	O1-C1-C2-C3
5	A	1209	OLA	C2-C3-C4-C5
5	A	1214	OLA	O2-C1-C2-C3
5	A	1204	OLA	O1-C1-C2-C3
8	A	1223	OLB	C4-C5-C6-C7
5	A	1209	OLA	O1-C1-C2-C3
5	A	1204	OLA	O2-C1-C2-C3
5	A	1224	OLA	O2-C1-C2-C3
5	A	1212	OLA	O2-C1-C2-C3
5	A	1220	OLA	O2-C1-C2-C3
5	A	1206	OLA	C7-C8-C9-C10
5	A	1206	OLA	C9-C10-C11-C12
5	A	1209	OLA	C7-C8-C9-C10
6	A	1215	OLC	C9-C10-C11-C12

Continued on next page...

Continued from previous page...

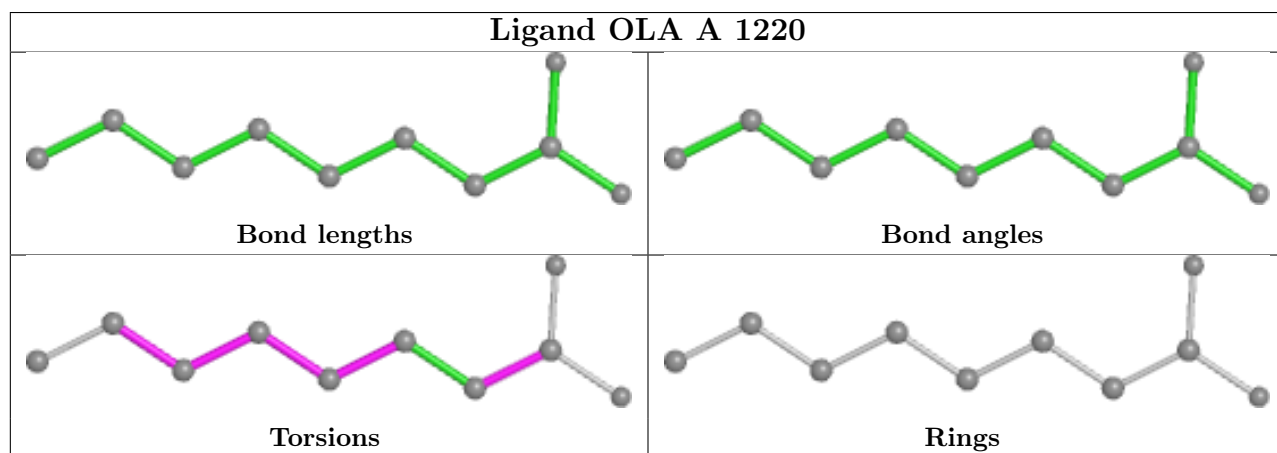
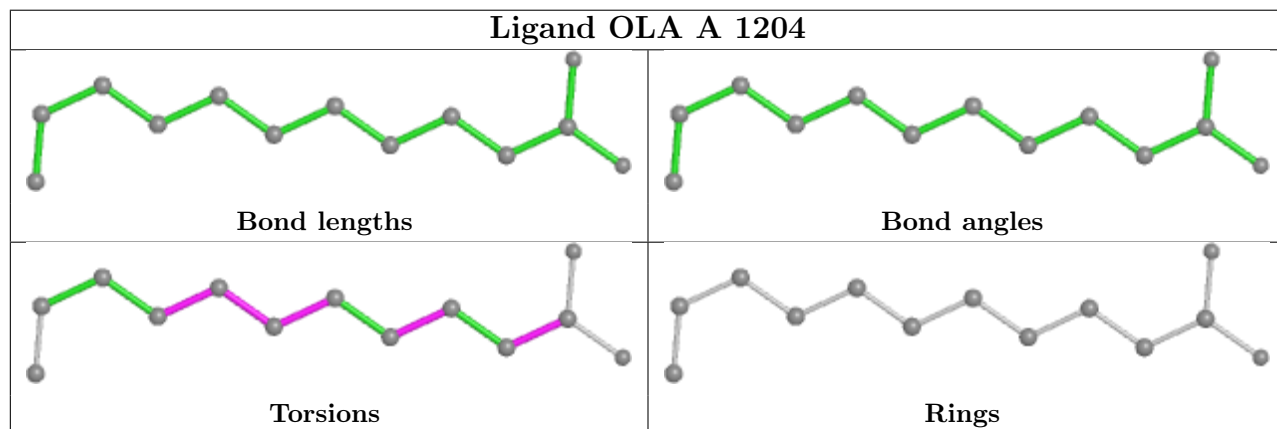
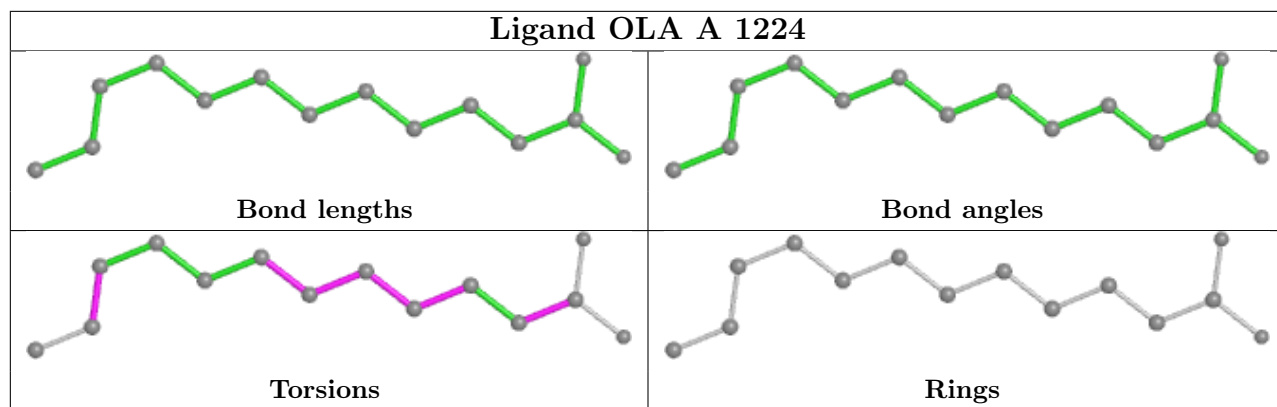
Mol	Chain	Res	Type	Atoms
5	A	1205	OLA	C1-C2-C3-C4
5	A	1212	OLA	O1-C1-C2-C3
5	A	1208	OLA	C9-C10-C11-C12
6	A	1211	OLC	O20-C1-C2-C3
6	A	1218	OLC	C7-C8-C9-C10
5	A	1208	OLA	C7-C8-C9-C10
5	A	1205	OLA	O2-C1-C2-C3
6	A	1211	OLC	C2-C3-C4-C5
6	A	1211	OLC	O19-C1-C2-C3
5	A	1205	OLA	O1-C1-C2-C3
6	A	1211	OLC	C4-C5-C6-C7
5	A	1220	OLA	C5-C6-C7-C8
5	A	1225	OLA	O2-C1-C2-C3

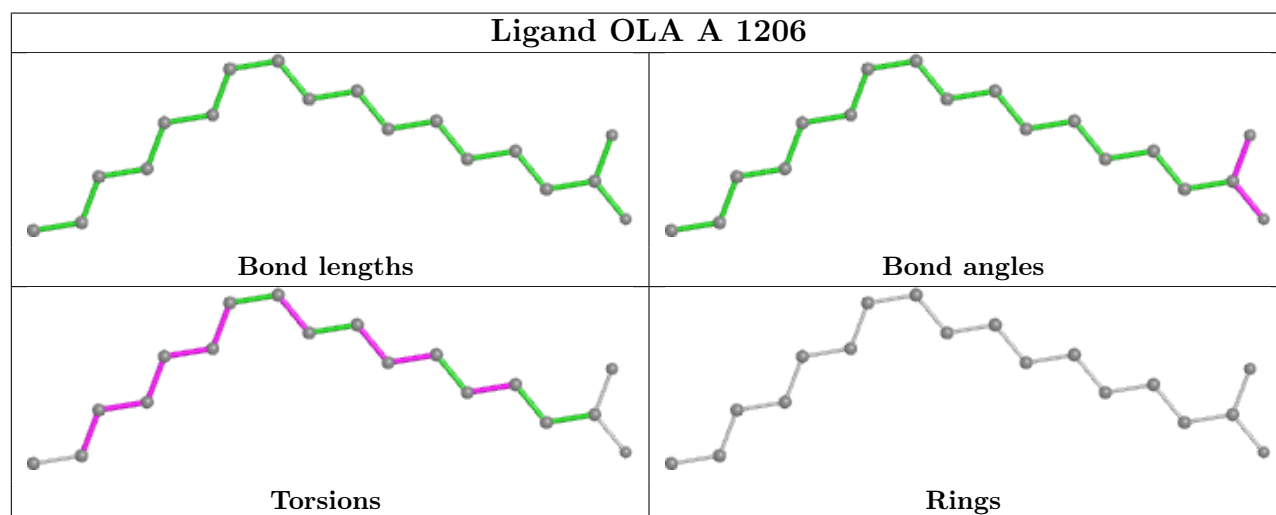
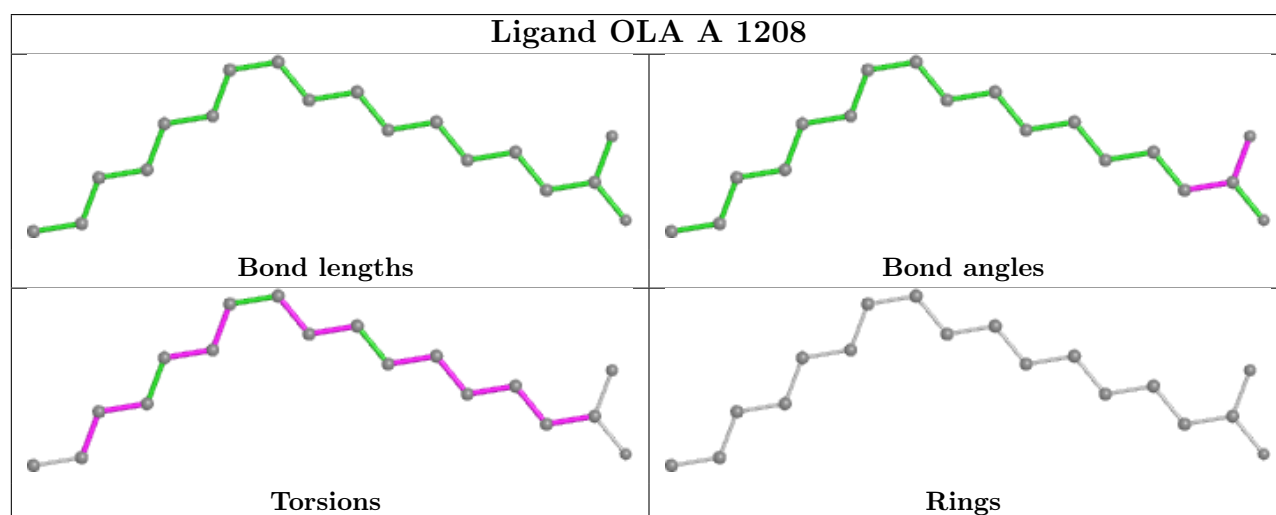
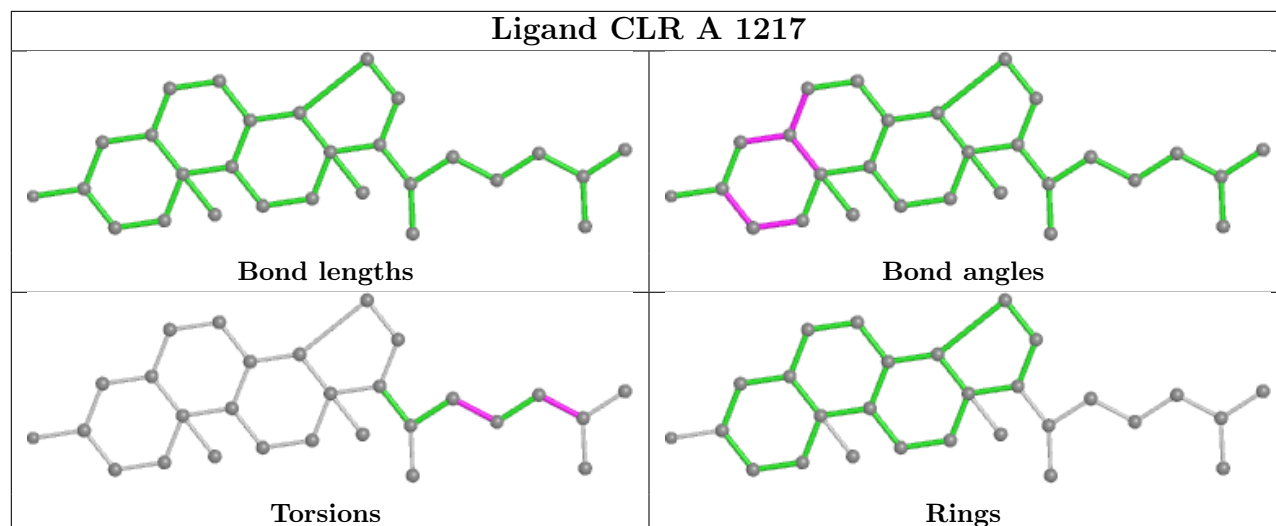
There are no ring outliers.

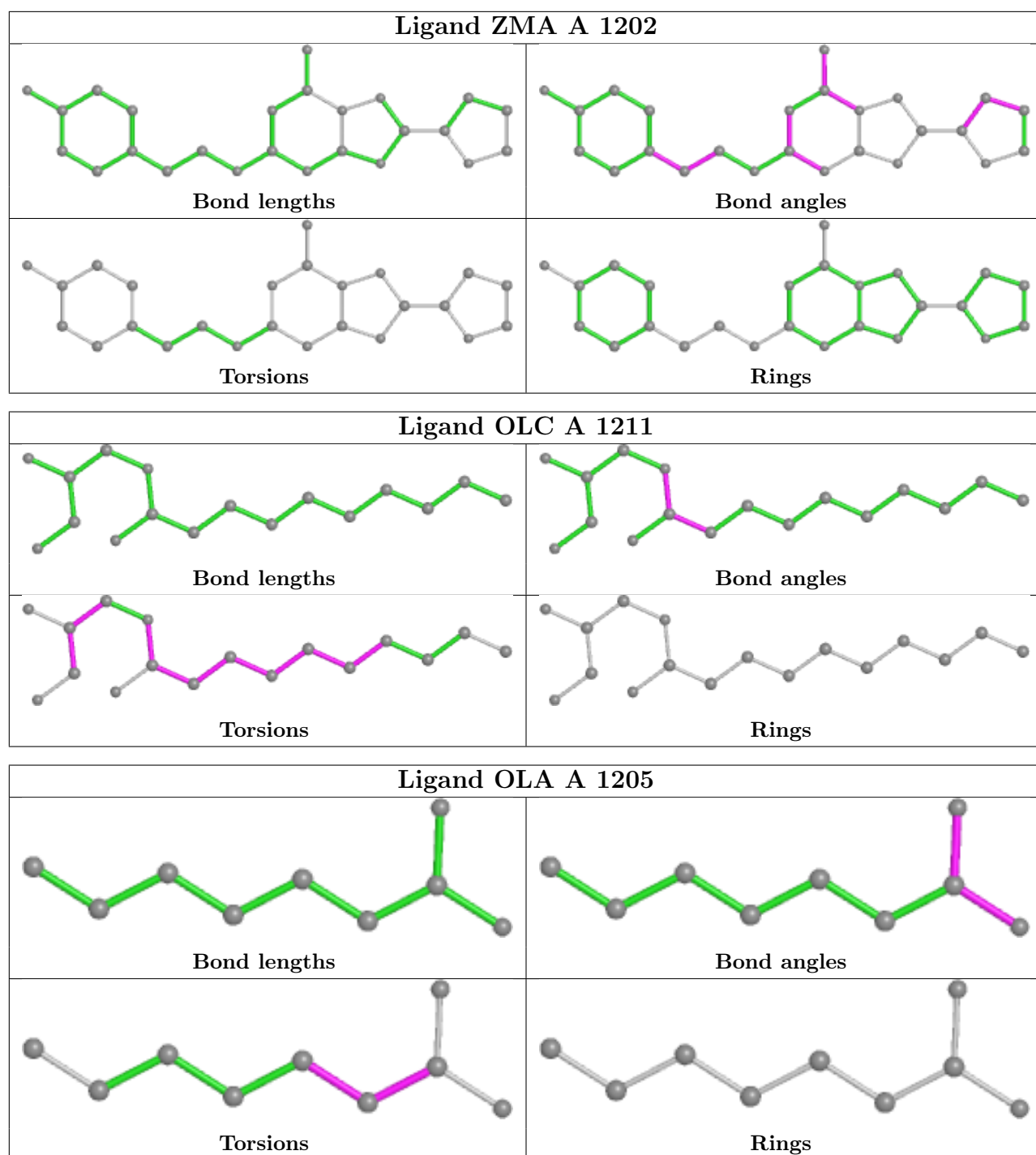
6 monomers are involved in 4 short contacts:

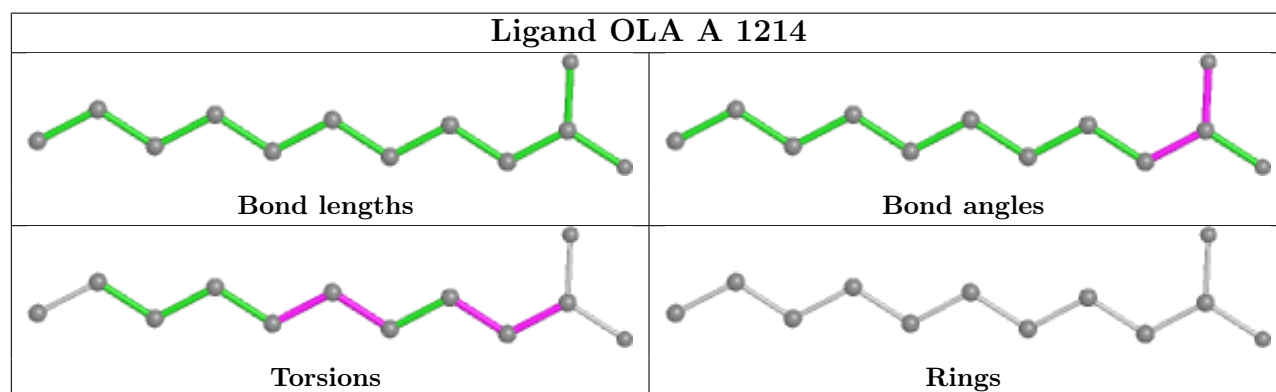
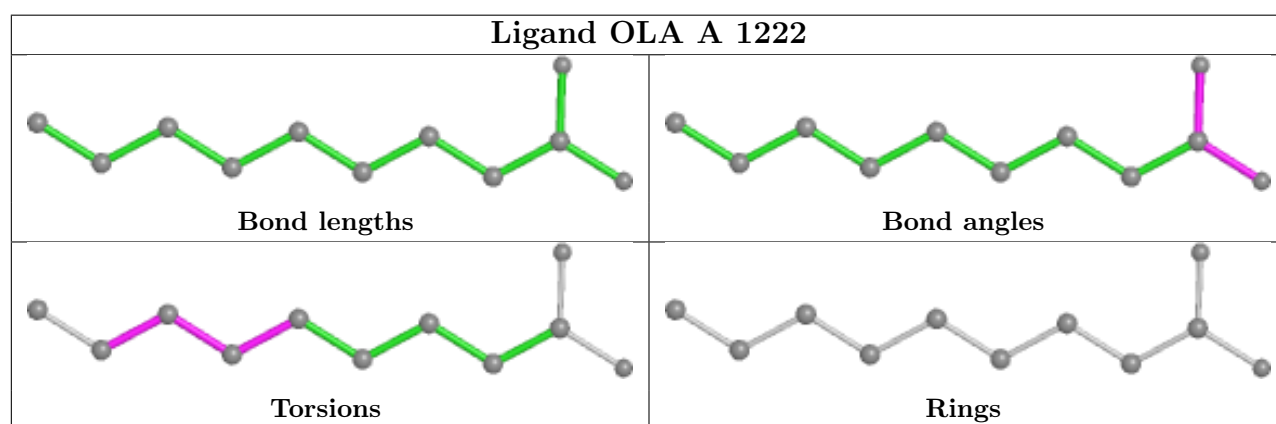
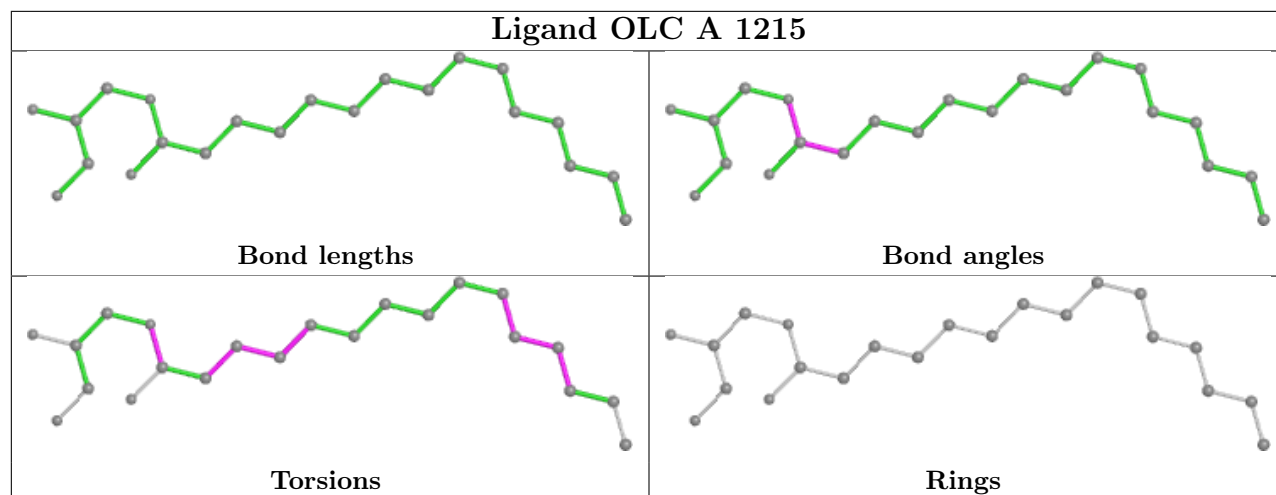
Mol	Chain	Res	Type	Clashes	Symm-Clashes
4	A	1217	CLR	1	0
5	A	1208	OLA	1	0
3	A	1202	ZMA	1	0
6	A	1227	OLC	1	0
5	A	1221	OLA	1	0
8	A	1223	OLB	1	0

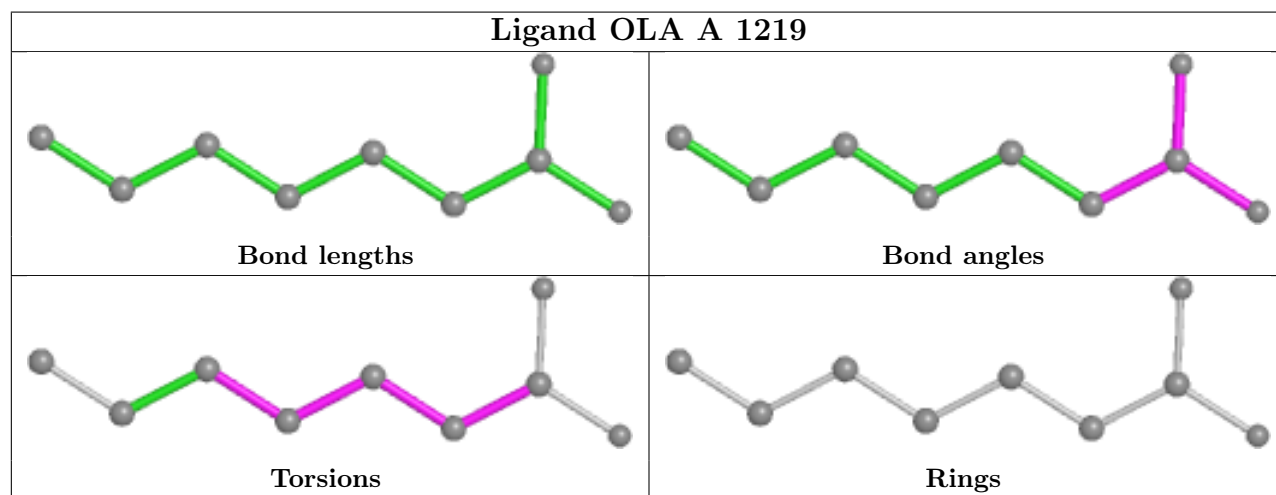
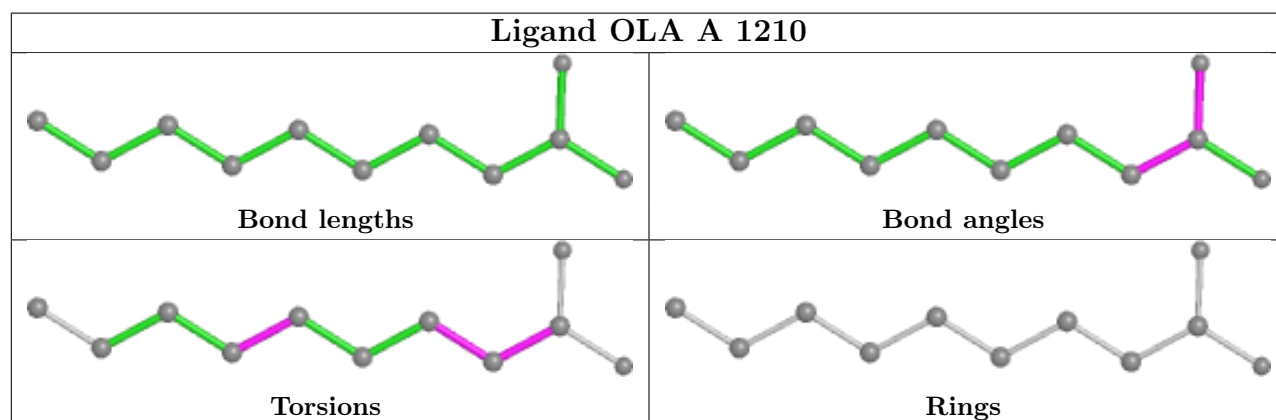
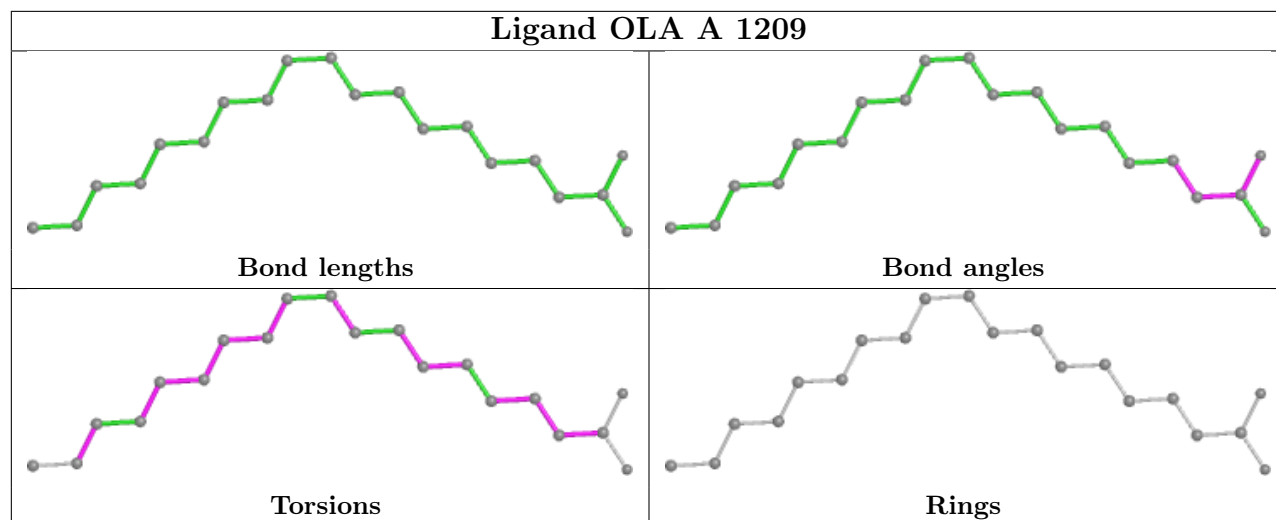
The following is a two-dimensional graphical depiction of Mogul quality analysis of bond lengths, bond angles, torsion angles, and ring geometry for all instances of the Ligand of Interest. In addition, ligands with molecular weight > 250 and outliers as shown on the validation Tables will also be included. For torsion angles, if less than 5% of the Mogul distribution of torsion angles is within 10 degrees of the torsion angle in question, then that torsion angle is considered an outlier. Any bond that is central to one or more torsion angles identified as an outlier by Mogul will be highlighted in the graph. For rings, the root-mean-square deviation (RMSD) between the ring in question and similar rings identified by Mogul is calculated over all ring torsion angles. If the average RMSD is greater than 60 degrees and the minimal RMSD between the ring in question and any Mogul-identified rings is also greater than 60 degrees, then that ring is considered an outlier. The outliers are highlighted in purple. The color gray indicates Mogul did not find sufficient equivalents in the CSD to analyse the geometry.

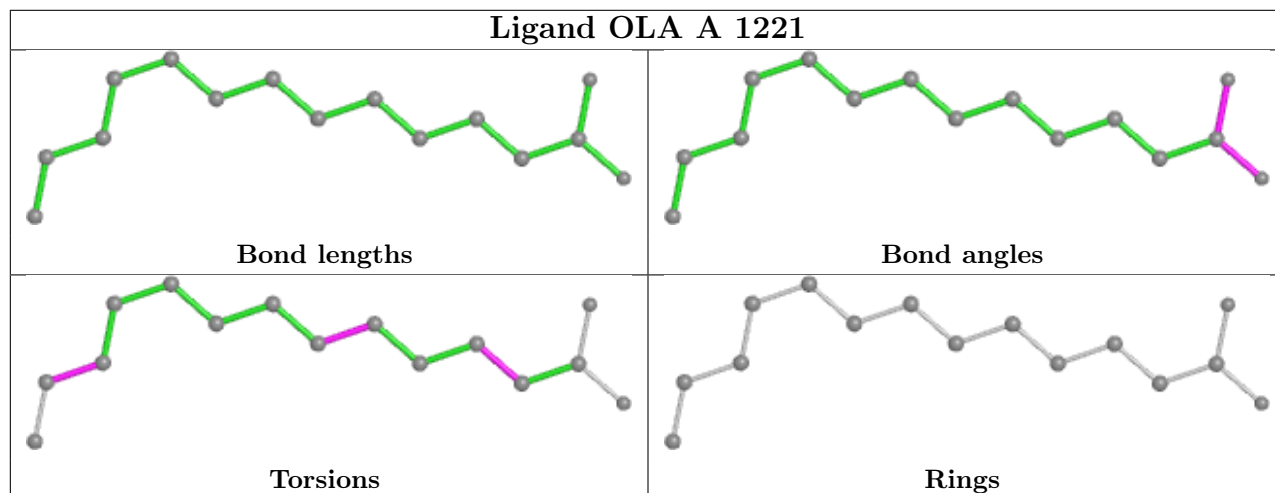
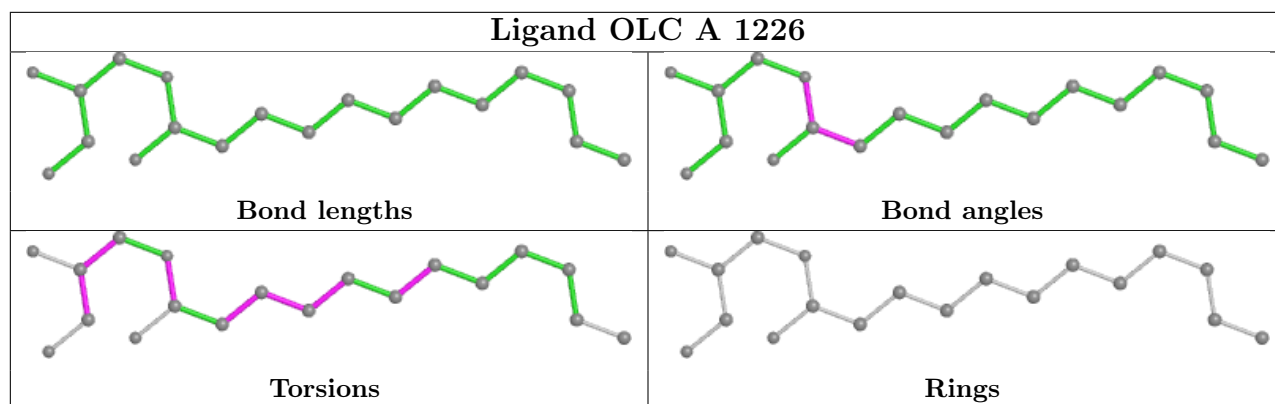
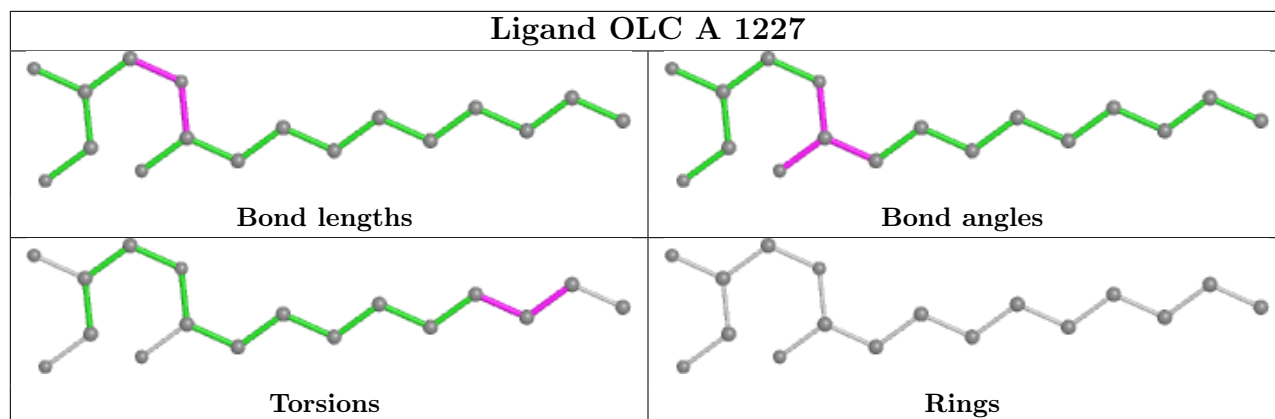


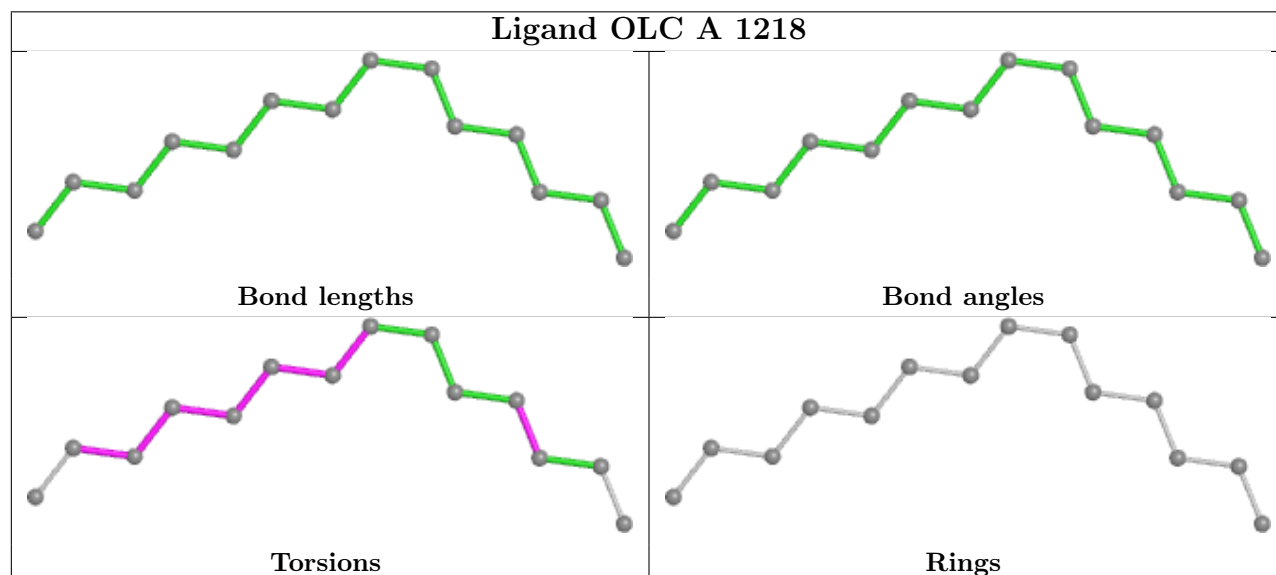
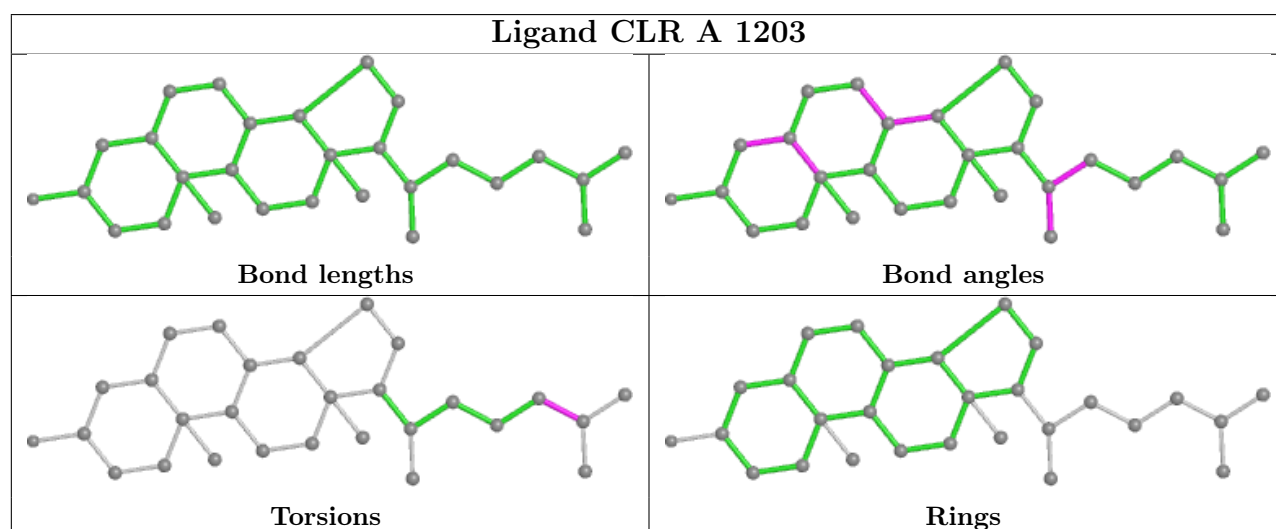
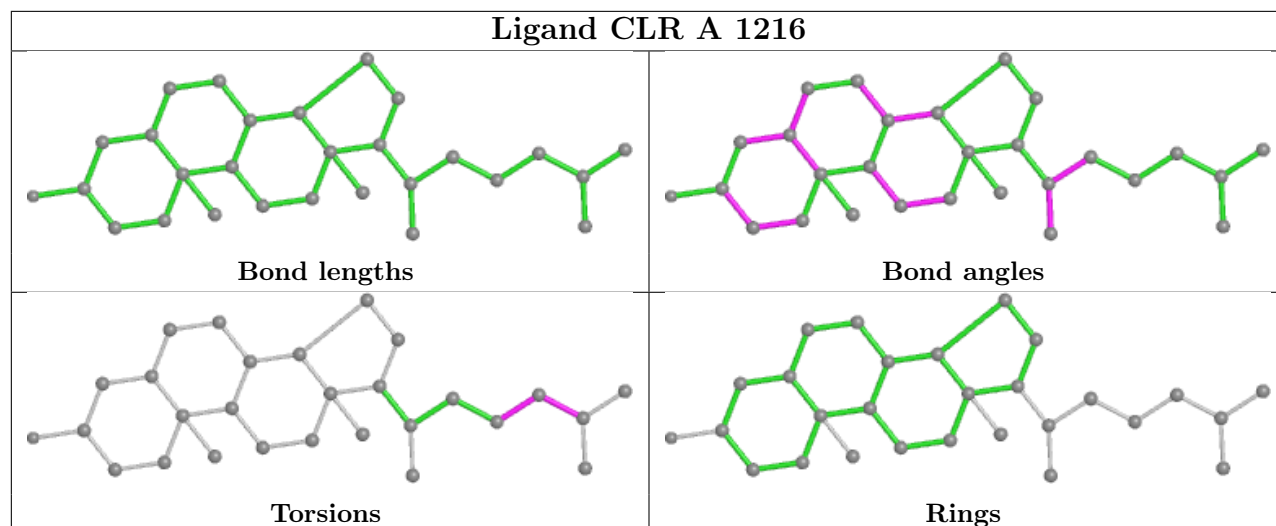


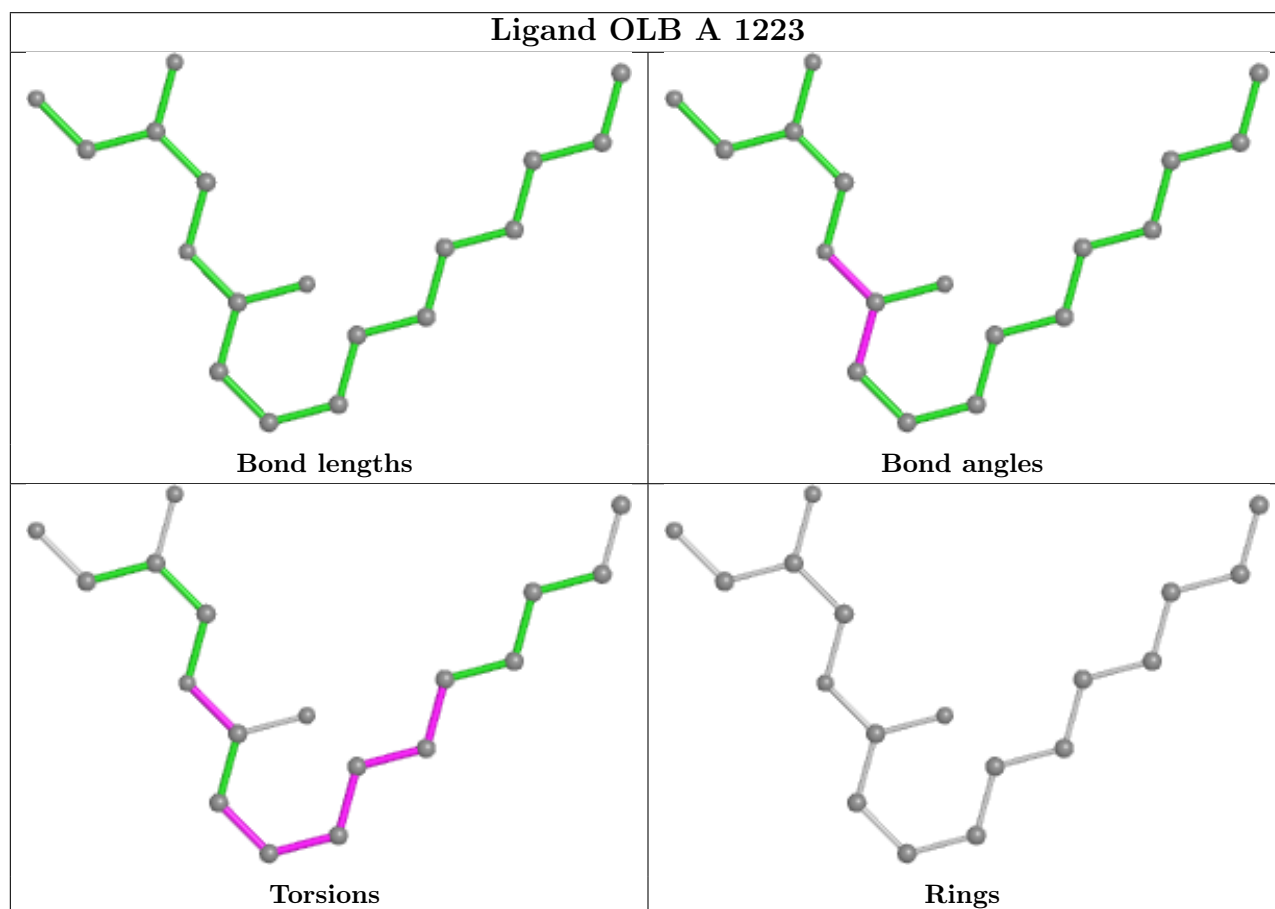
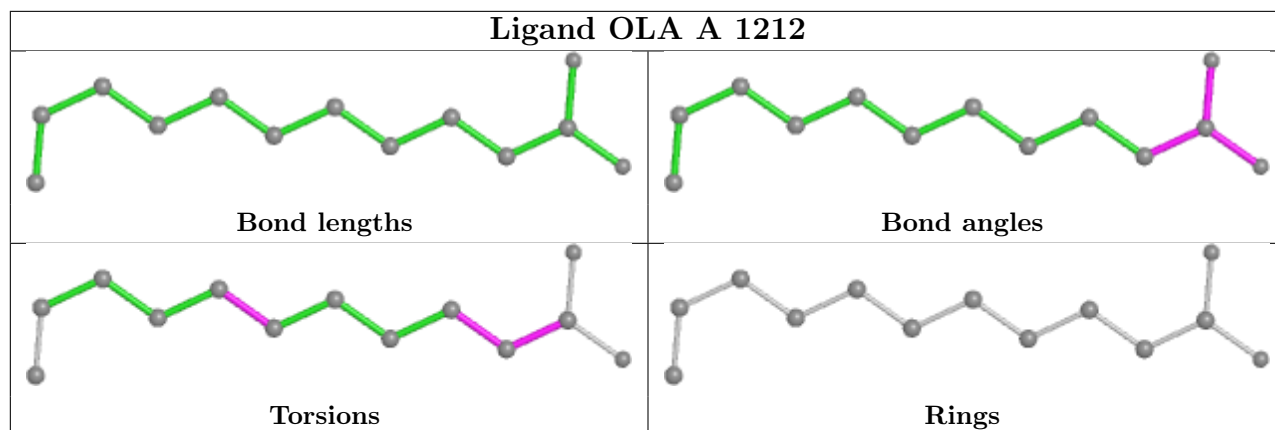


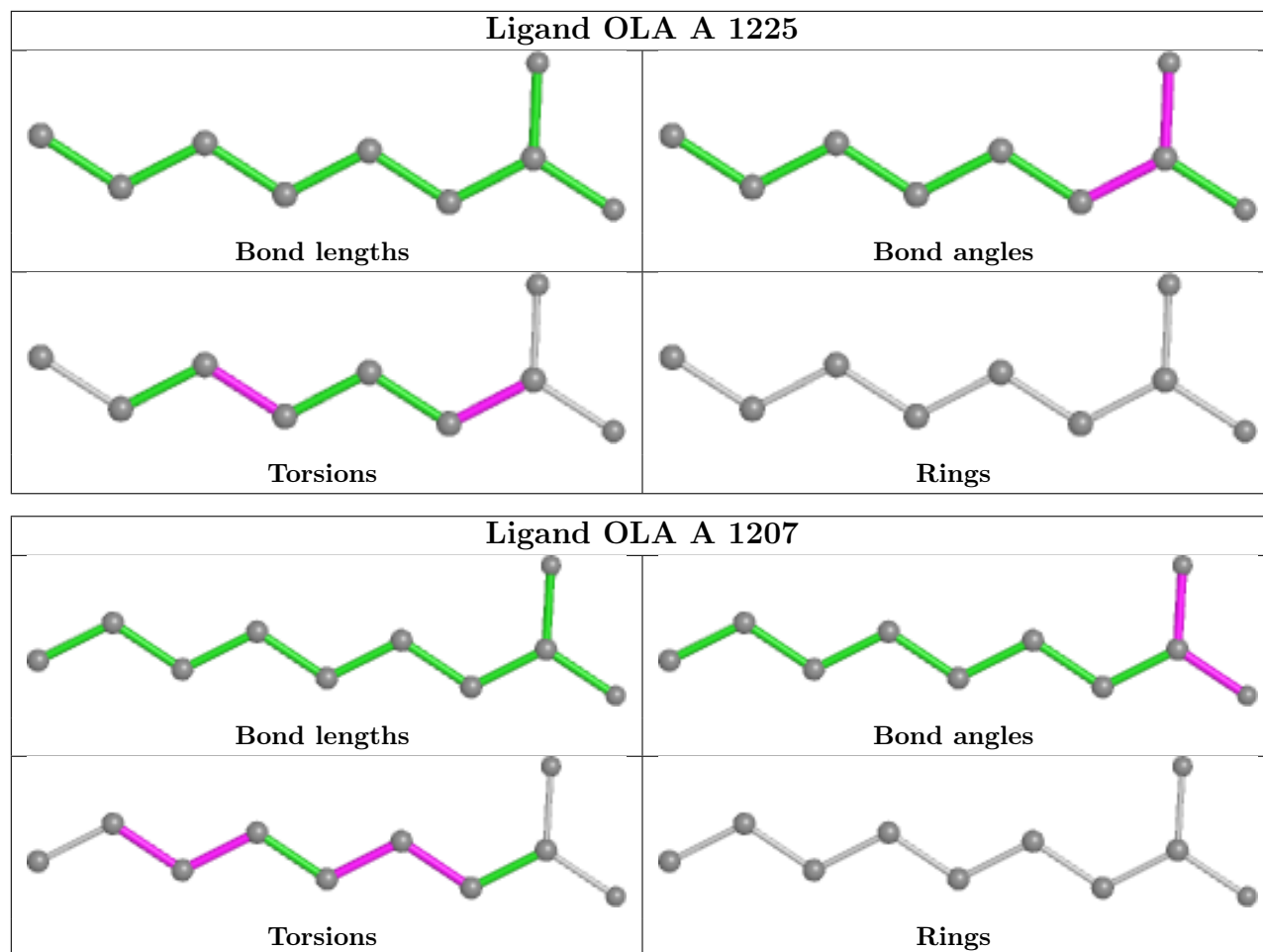












5.7 Other polymers [i](#)

There are no such residues in this entry.

5.8 Polymer linkage issues [i](#)

There are no chain breaks in this entry.

6 Fit of model and data

6.1 Protein, DNA and RNA chains

In the following table, the column labelled ‘#RSRZ > 2’ contains the number (and percentage) of RSRZ outliers, followed by percent RSRZ outliers for the chain as percentile scores relative to all X-ray entries and entries of similar resolution. The OWAB column contains the minimum, median, 95th percentile and maximum values of the occupancy-weighted average B-factor per residue. The column labelled ‘Q < 0.9’ lists the number of (and percentage) of residues with an average occupancy less than 0.9.

Mol	Chain	Analysed	<RSRZ>	#RSRZ>2	OWAB(Å ²)	Q<0.9
1	A	391/447 (87%)	0.44	33 (8%) 11 10	25, 38, 86, 112	0

All (33) RSRZ outliers are listed below:

Mol	Chain	Res	Type	RSRZ
1	A	1024	ALA	6.8
1	A	306	HIS	6.7
1	A	1061	PHE	6.4
1	A	307	VAL	6.3
1	A	1023	ALA	6.0
1	A	1026	VAL	5.0
1	A	-1	GLY	4.9
1	A	305	SER	4.6
1	A	1063	HIS	4.2
1	A	308	LEU	4.0
1	A	111	ARG	3.9
1	A	1062	ARG	3.9
1	A	161	GLU	3.5
1	A	1060	ASP	3.3
1	A	1031	THR	3.2
1	A	1084	VAL	2.9
1	A	1069	VAL	2.8
1	A	1080	ASN	2.8
1	A	-2	ASP	2.5
1	A	304	ARG	2.5
1	A	110	LEU	2.5
1	A	293	ARG	2.4
1	A	1101	TYR	2.4
1	A	154[A]	ASN	2.4
1	A	81	ALA	2.4
1	A	159	CYS	2.3
1	A	98	ILE	2.3

Continued on next page...

Continued from previous page...

Mol	Chain	Res	Type	RSRZ
1	A	155	HIS	2.2
1	A	290	TYR	2.2
1	A	1067	ILE	2.1
1	A	107	ARG	2.1
1	A	1066	ASP	2.0
1	A	160	GLY	2.0

6.2 Non-standard residues in protein, DNA, RNA chains [i](#)

There are no non-standard protein/DNA/RNA residues in this entry.

6.3 Carbohydrates [i](#)

There are no monosaccharides in this entry.

6.4 Ligands [i](#)

In the following table, the Atoms column lists the number of modelled atoms in the group and the number defined in the chemical component dictionary. The B-factors column lists the minimum, median, 95th percentile and maximum values of B factors of atoms in the group. The column labelled 'Q<0.9' lists the number of atoms with occupancy less than 0.9.

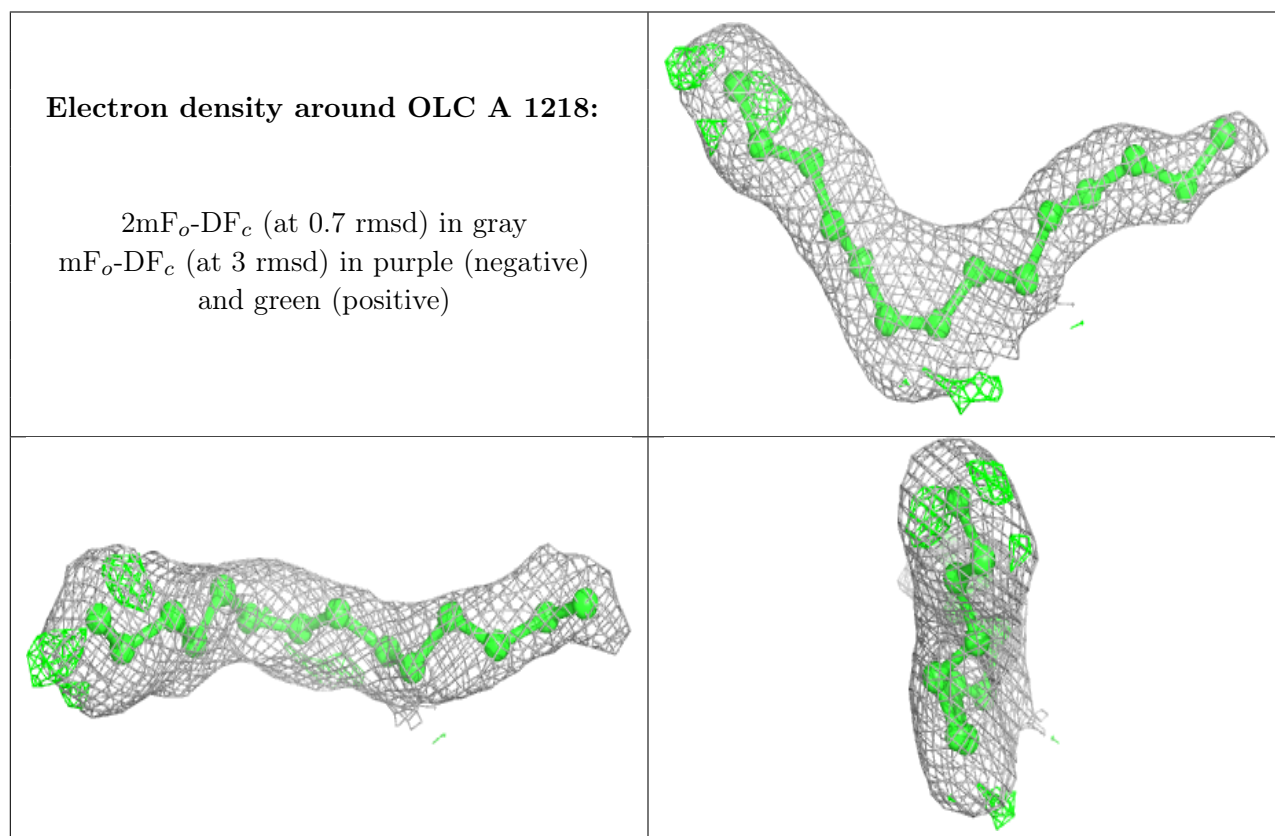
Mol	Type	Chain	Res	Atoms	RSCC	RSR	B-factors(Å ²)	Q<0.9
6	OLC	A	1218	14/25	0.44	0.25	66,68,71,71	0
5	OLA	A	1224	14/20	0.47	0.24	61,72,82,83	0
5	OLA	A	1225	9/20	0.56	0.21	72,73,77,78	0
6	OLC	A	1211	17/25	0.60	0.33	71,78,83,85	0
6	OLC	A	1215	22/25	0.64	0.40	91,101,106,106	0
5	OLA	A	1207	10/20	0.64	0.22	76,78,83,84	0
5	OLA	A	1204	13/20	0.65	0.22	80,84,89,90	0
5	OLA	A	1210	11/20	0.68	0.17	82,83,90,91	0
5	OLA	A	1209	20/20	0.68	0.24	89,90,100,100	0
8	OLB	A	1223	18/25	0.68	0.21	75,80,86,87	0
5	OLA	A	1214	12/20	0.71	0.26	49,61,73,74	0
5	OLA	A	1221	15/20	0.71	0.23	65,67,75,77	0
6	OLC	A	1226	19/25	0.75	0.27	56,66,73,76	0
5	OLA	A	1212	13/20	0.78	0.21	58,61,73,74	0
5	OLA	A	1206	18/20	0.78	0.22	66,69,74,74	0
5	OLA	A	1222	11/20	0.79	0.15	84,85,87,88	0
5	OLA	A	1220	10/20	0.79	0.16	85,86,86,86	0

Continued on next page...

Continued from previous page...

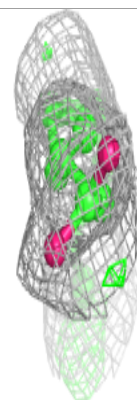
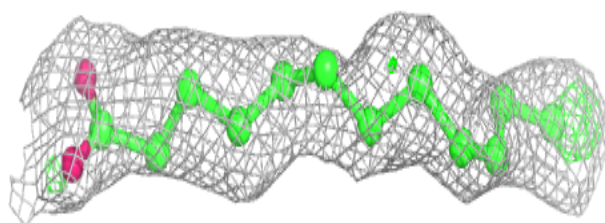
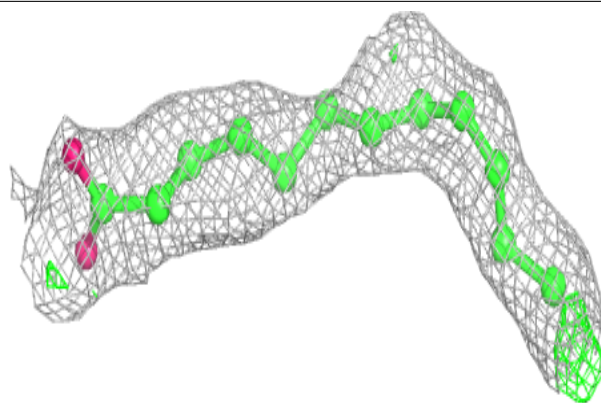
Mol	Type	Chain	Res	Atoms	RSCC	RSR	B-factors(\AA^2)	Q<0.9
6	OLC	A	1227	17/25	0.81	0.29	20,20,20,20	0
5	OLA	A	1205	9/20	0.81	0.19	81,81,86,87	0
5	OLA	A	1208	18/20	0.84	0.17	66,67,78,80	0
7	GOL	A	1213	6/6	0.85	0.19	67,68,69,70	0
5	OLA	A	1219	9/20	0.86	0.27	56,59,64,64	0
4	CLR	A	1217	28/28	0.87	0.15	40,43,61,62	0
4	CLR	A	1216	28/28	0.92	0.12	39,44,52,56	0
4	CLR	A	1203	28/28	0.94	0.12	34,38,60,61	0
3	ZMA	A	1202	25/25	0.95	0.16	23,28,48,51	0
2	NA	A	1201	1/1	0.98	0.08	35,35,35,35	0

The following is a graphical depiction of the model fit to experimental electron density of all instances of the Ligand of Interest. In addition, ligands with molecular weight > 250 and outliers as shown on the geometry validation Tables will also be included. Each fit is shown from different orientation to approximate a three-dimensional view.

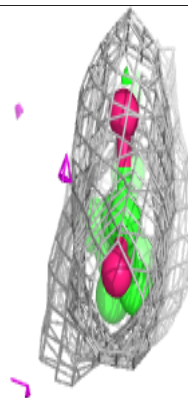
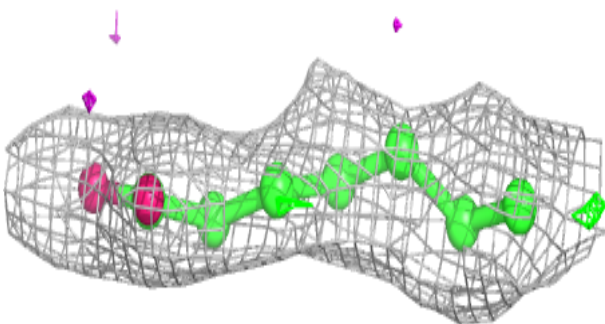
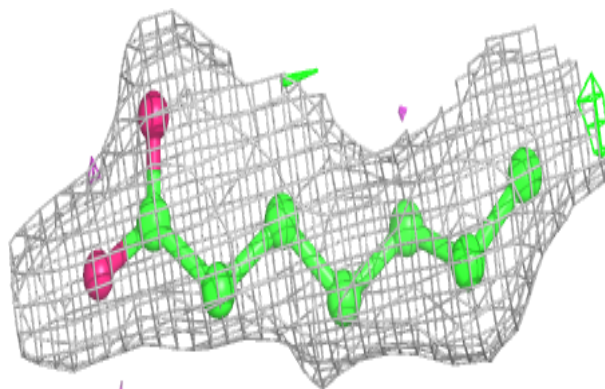


Electron density around OLA A 1224:

$2mF_o-DF_c$ (at 0.7 rmsd) in gray
 mF_o-DF_c (at 3 rmsd) in purple (negative)
and green (positive)

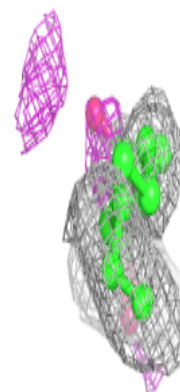
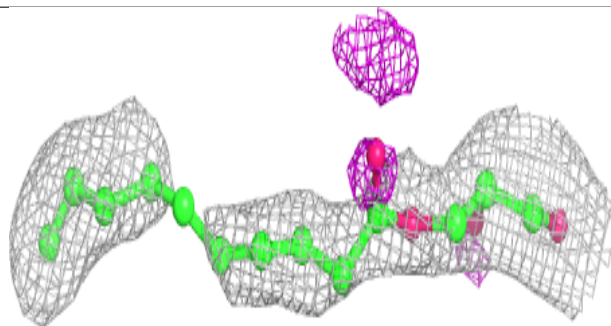
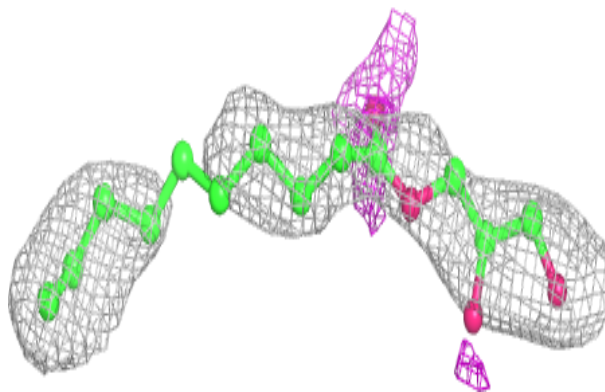
**Electron density around OLA A 1225:**

$2mF_o-DF_c$ (at 0.7 rmsd) in gray
 mF_o-DF_c (at 3 rmsd) in purple (negative)
and green (positive)

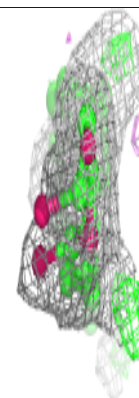
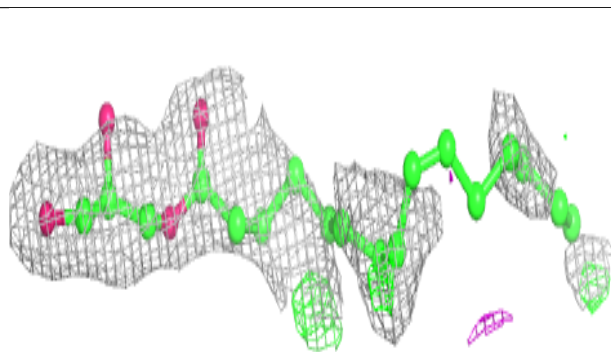
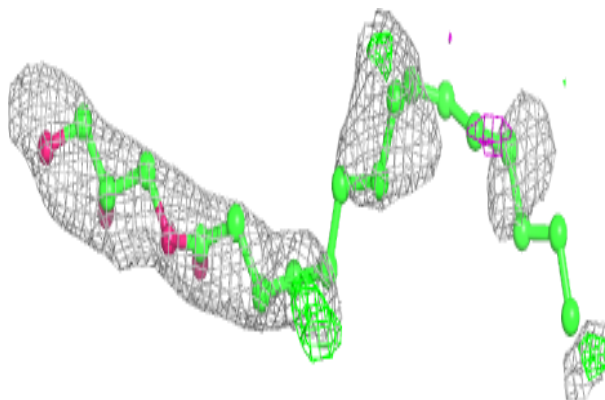


Electron density around OLC A 1211:

$2mF_o-DF_c$ (at 0.7 rmsd) in gray
 mF_o-DF_c (at 3 rmsd) in purple (negative)
and green (positive)

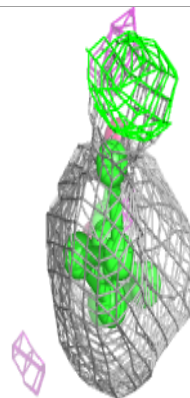
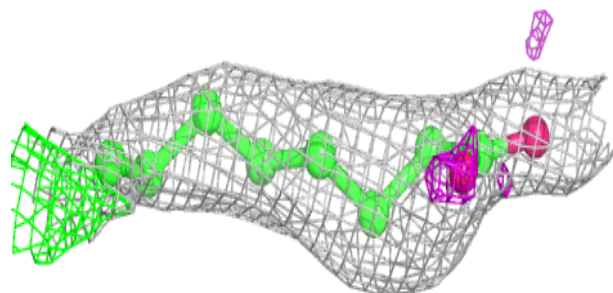
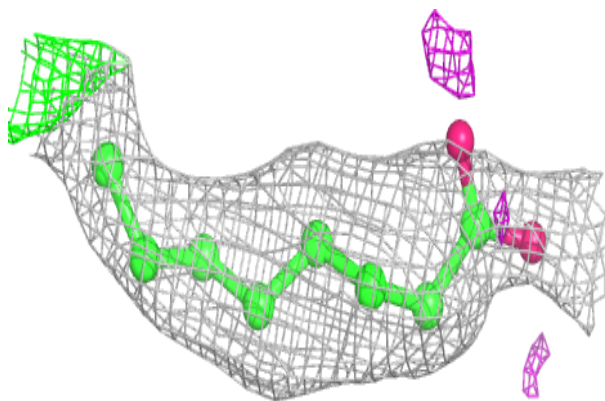
**Electron density around OLC A 1215:**

$2mF_o-DF_c$ (at 0.7 rmsd) in gray
 mF_o-DF_c (at 3 rmsd) in purple (negative)
and green (positive)

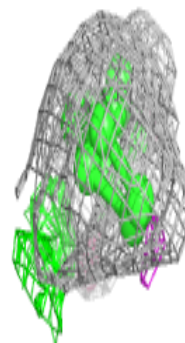
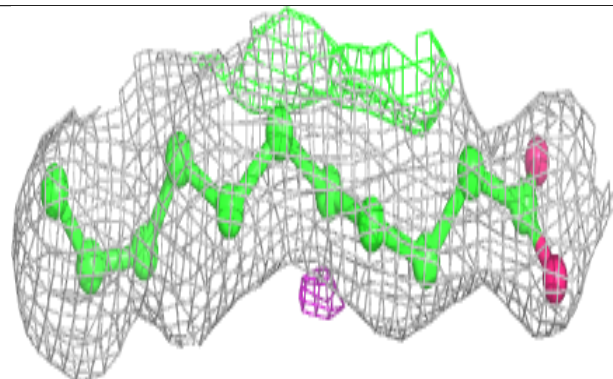
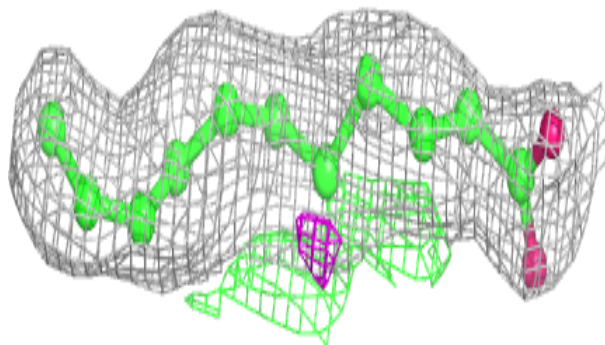


Electron density around OLA A 1207:

$2mF_o-DF_c$ (at 0.7 rmsd) in gray
 mF_o-DF_c (at 3 rmsd) in purple (negative)
and green (positive)

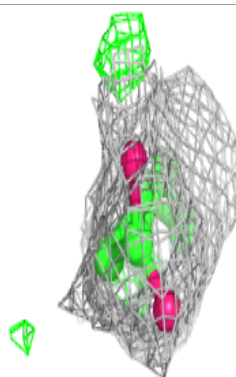
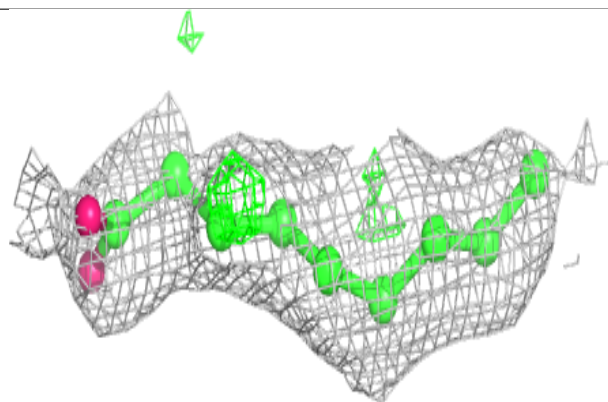
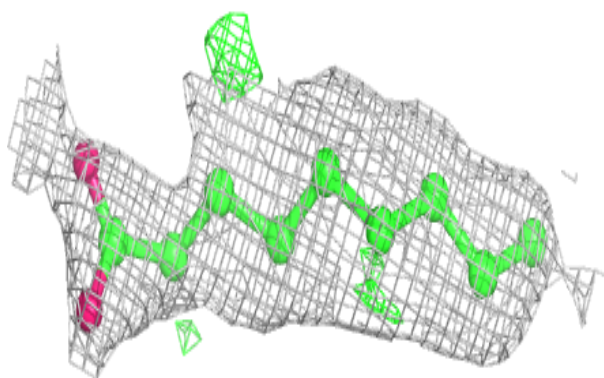
**Electron density around OLA A 1204:**

$2mF_o-DF_c$ (at 0.7 rmsd) in gray
 mF_o-DF_c (at 3 rmsd) in purple (negative)
and green (positive)

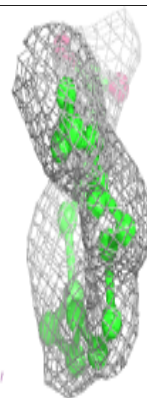
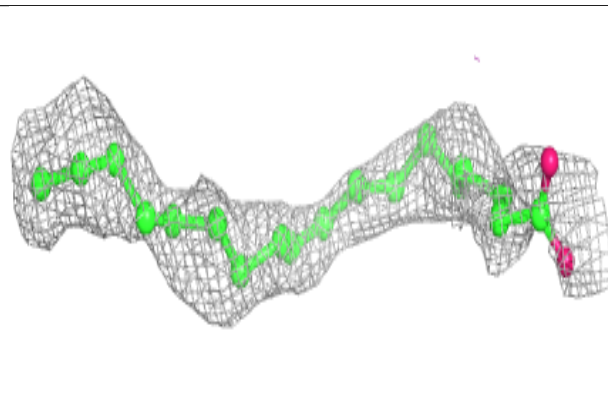
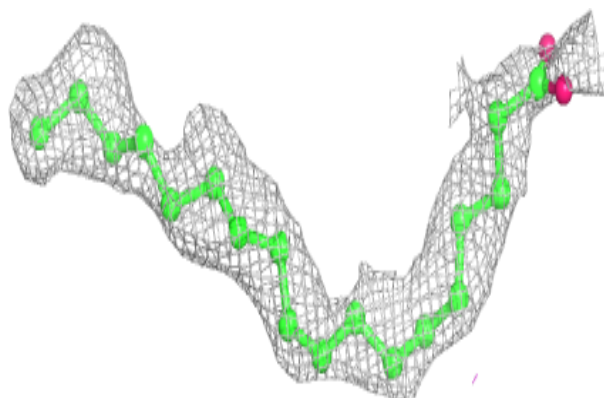


Electron density around OLA A 1210:

$2mF_o-DF_c$ (at 0.7 rmsd) in gray
 mF_o-DF_c (at 3 rmsd) in purple (negative)
and green (positive)

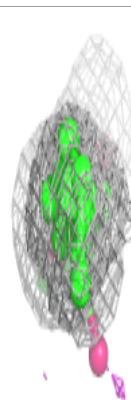
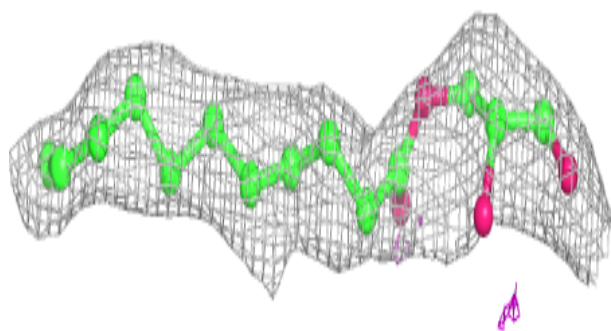
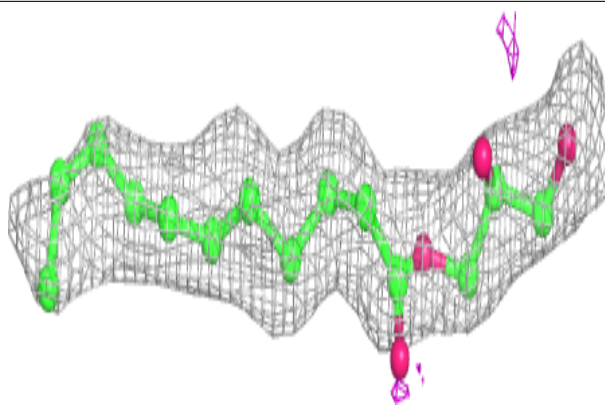
**Electron density around OLA A 1209:**

$2mF_o-DF_c$ (at 0.7 rmsd) in gray
 mF_o-DF_c (at 3 rmsd) in purple (negative)
and green (positive)

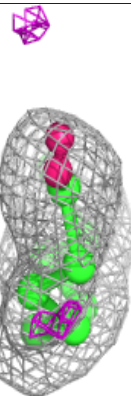
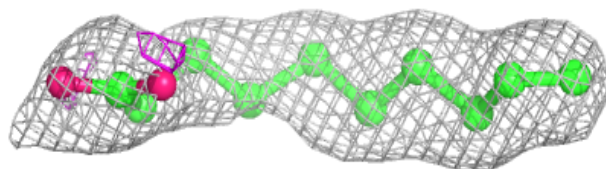
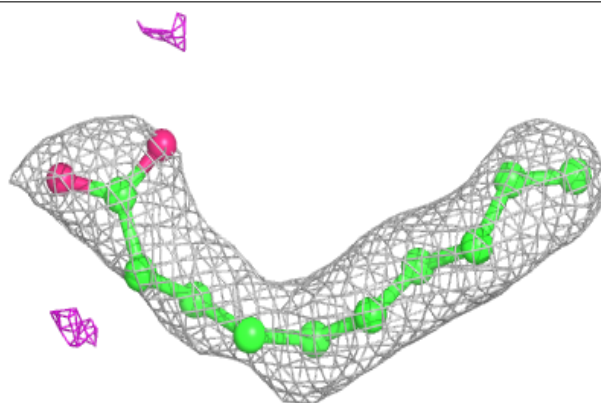


Electron density around OLB A 1223:

$2mF_o-DF_c$ (at 0.7 rmsd) in gray
 mF_o-DF_c (at 3 rmsd) in purple (negative)
and green (positive)

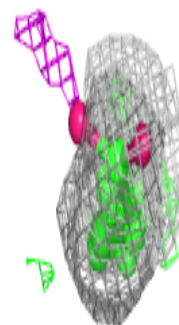
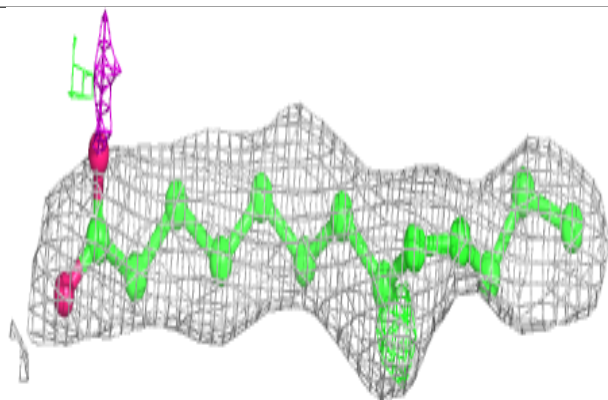
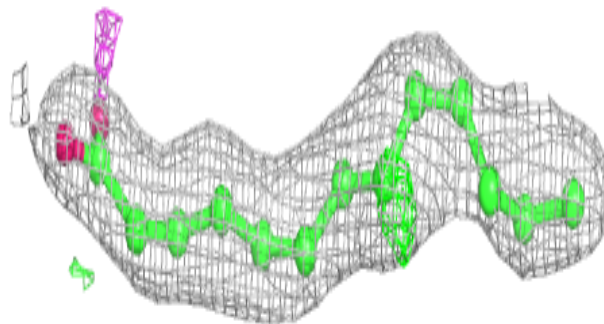
**Electron density around OLA A 1214:**

$2mF_o-DF_c$ (at 0.7 rmsd) in gray
 mF_o-DF_c (at 3 rmsd) in purple (negative)
and green (positive)

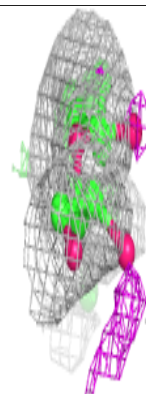
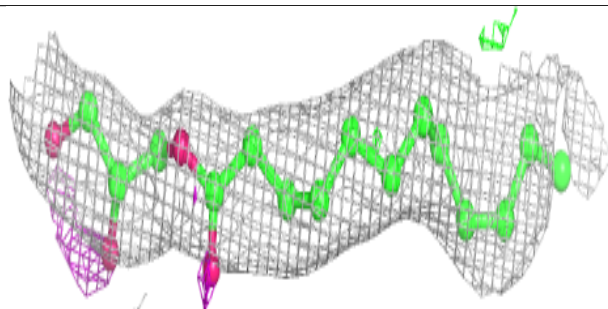
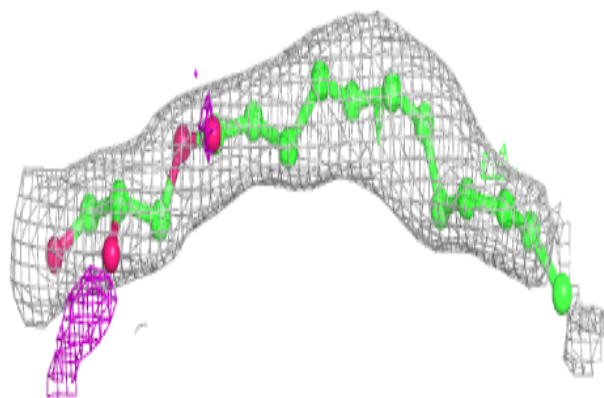


Electron density around OLA A 1221:

$2mF_o-DF_c$ (at 0.7 rmsd) in gray
 mF_o-DF_c (at 3 rmsd) in purple (negative)
and green (positive)

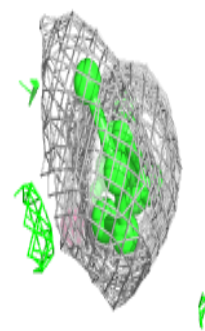
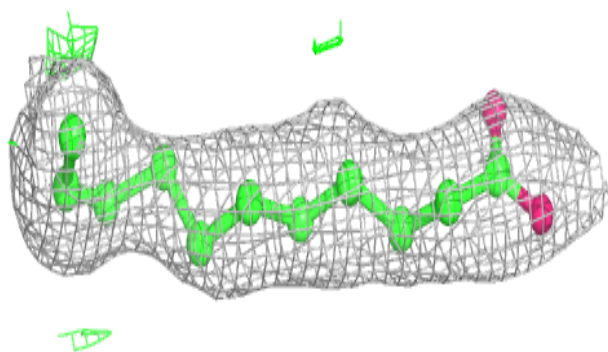
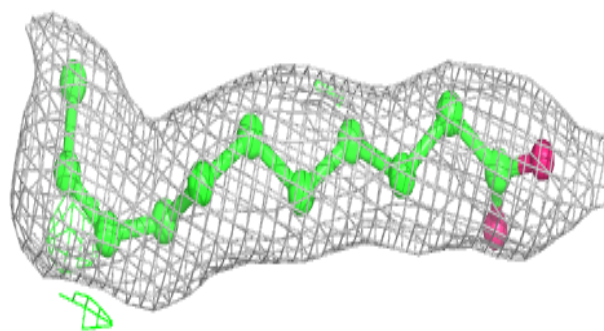
**Electron density around OLC A 1226:**

$2mF_o-DF_c$ (at 0.7 rmsd) in gray
 mF_o-DF_c (at 3 rmsd) in purple (negative)
and green (positive)

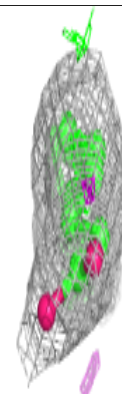
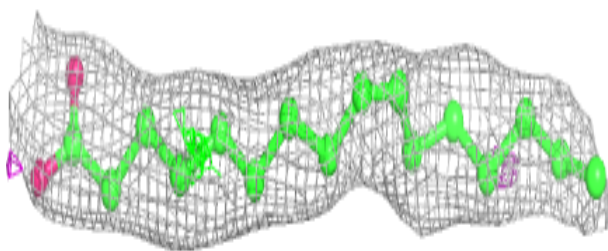
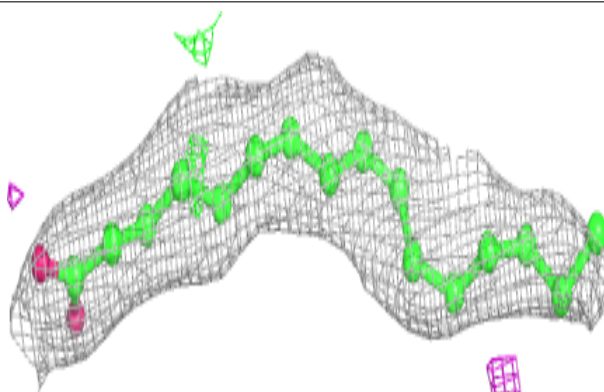


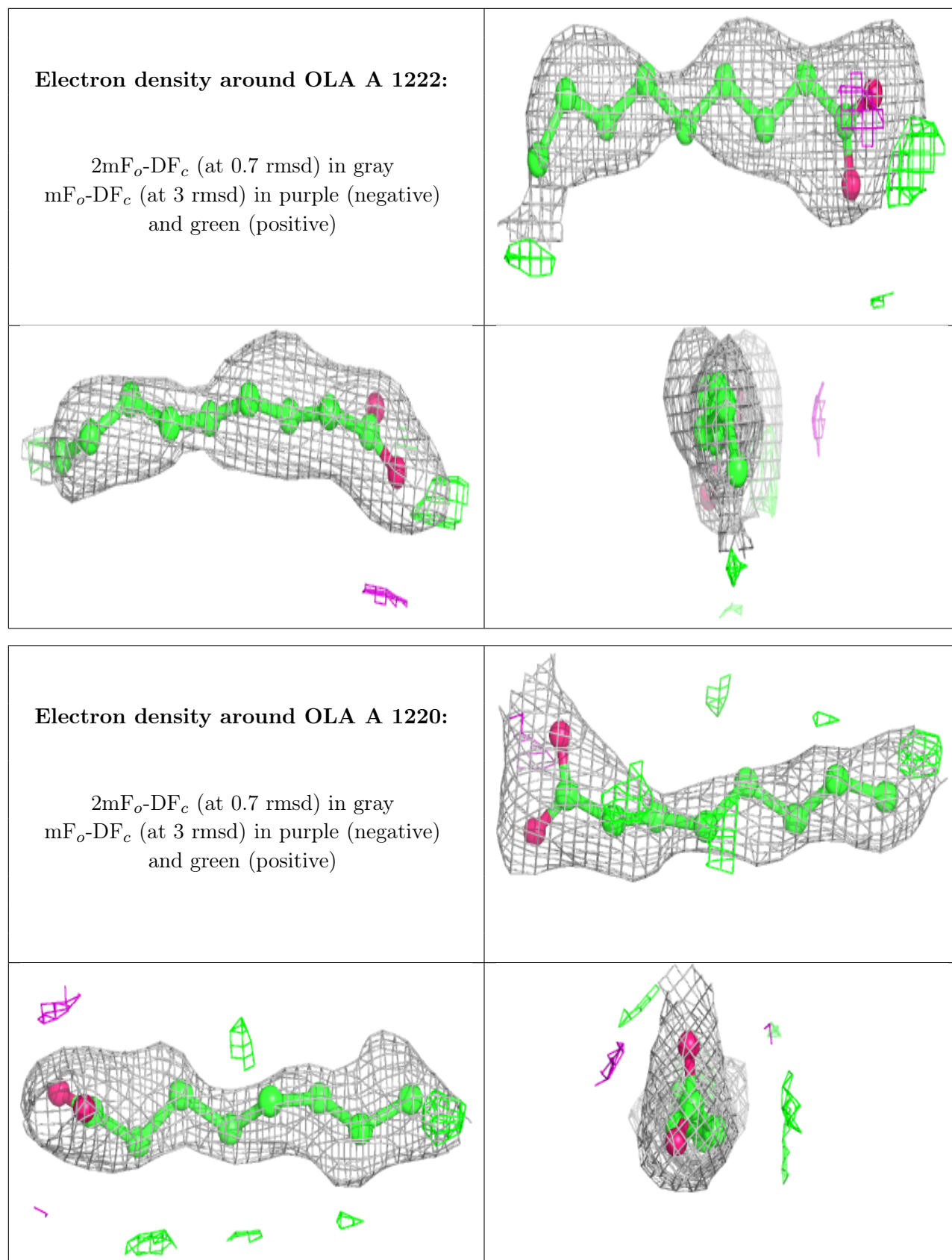
Electron density around OLA A 1212:

$2mF_o-DF_c$ (at 0.7 rmsd) in gray
 mF_o-DF_c (at 3 rmsd) in purple (negative)
and green (positive)

**Electron density around OLA A 1206:**

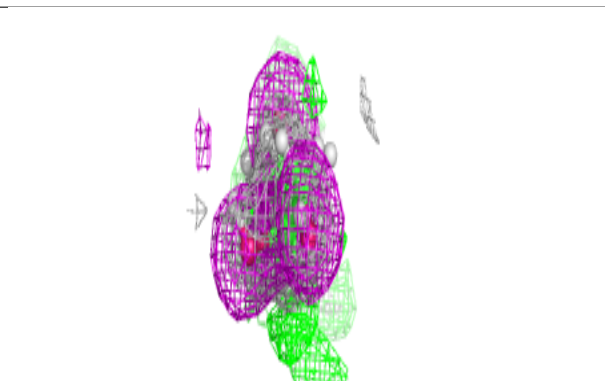
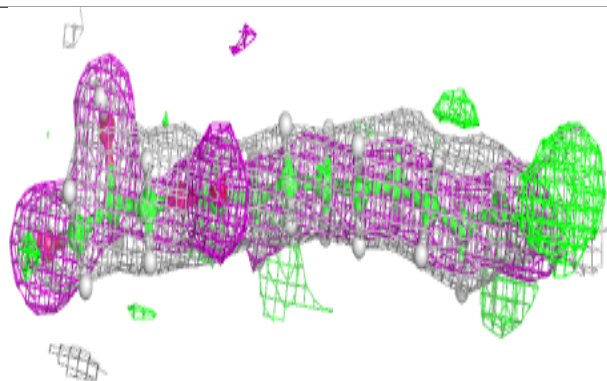
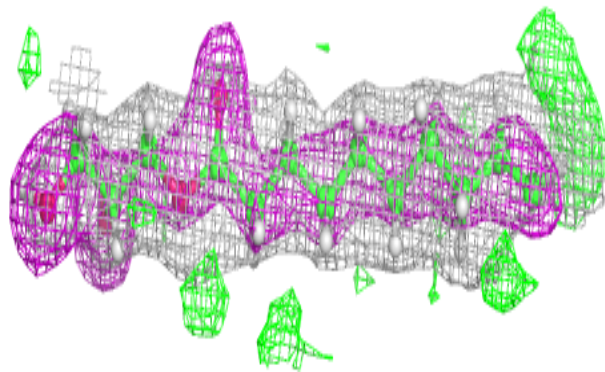
$2mF_o-DF_c$ (at 0.7 rmsd) in gray
 mF_o-DF_c (at 3 rmsd) in purple (negative)
and green (positive)



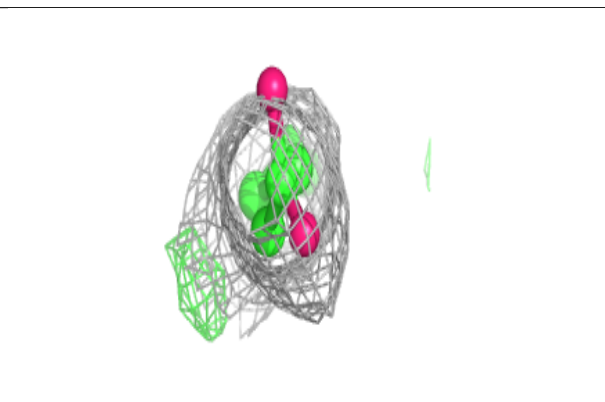
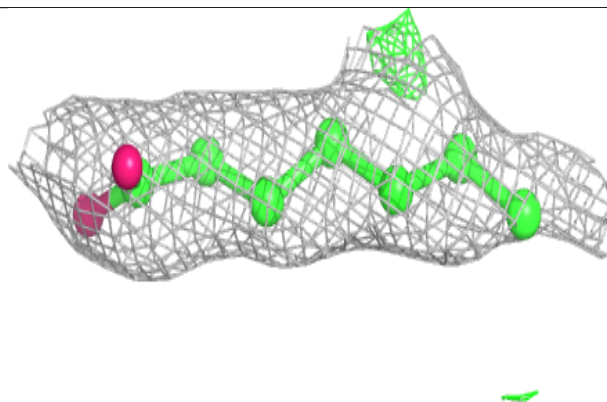
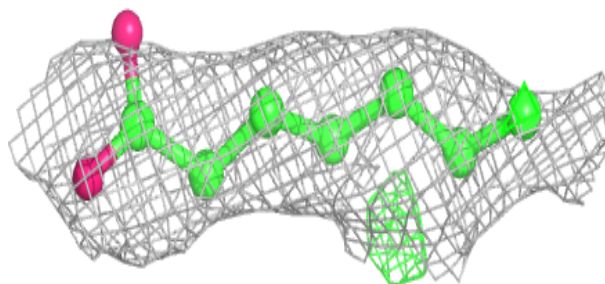


Electron density around OLC A 1227:

$2mF_o-DF_c$ (at 0.7 rmsd) in gray
 mF_o-DF_c (at 3 rmsd) in purple (negative)
and green (positive)

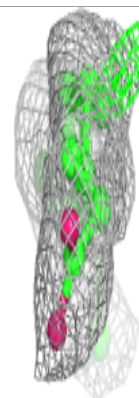
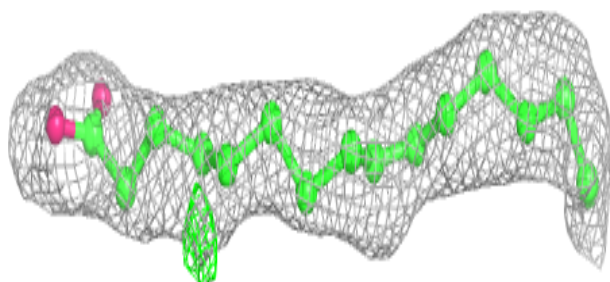
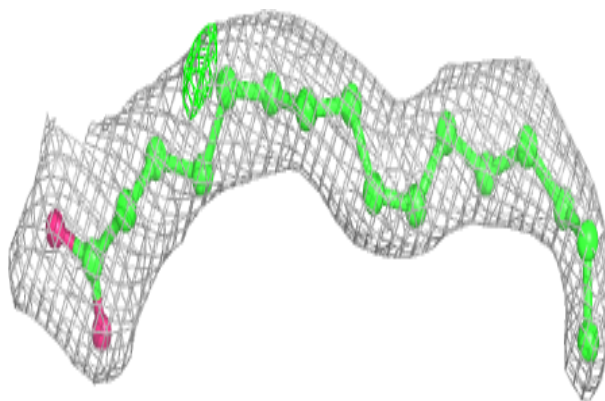
**Electron density around OLA A 1205:**

$2mF_o-DF_c$ (at 0.7 rmsd) in gray
 mF_o-DF_c (at 3 rmsd) in purple (negative)
and green (positive)

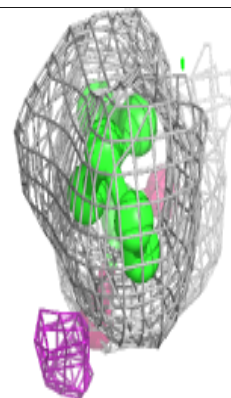
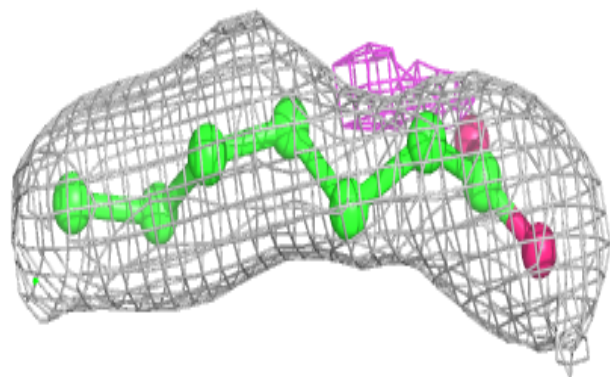
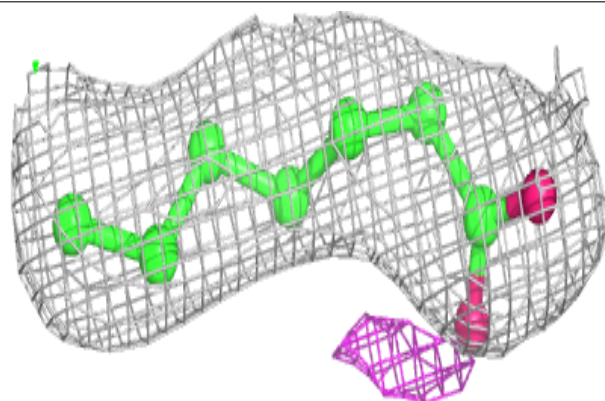


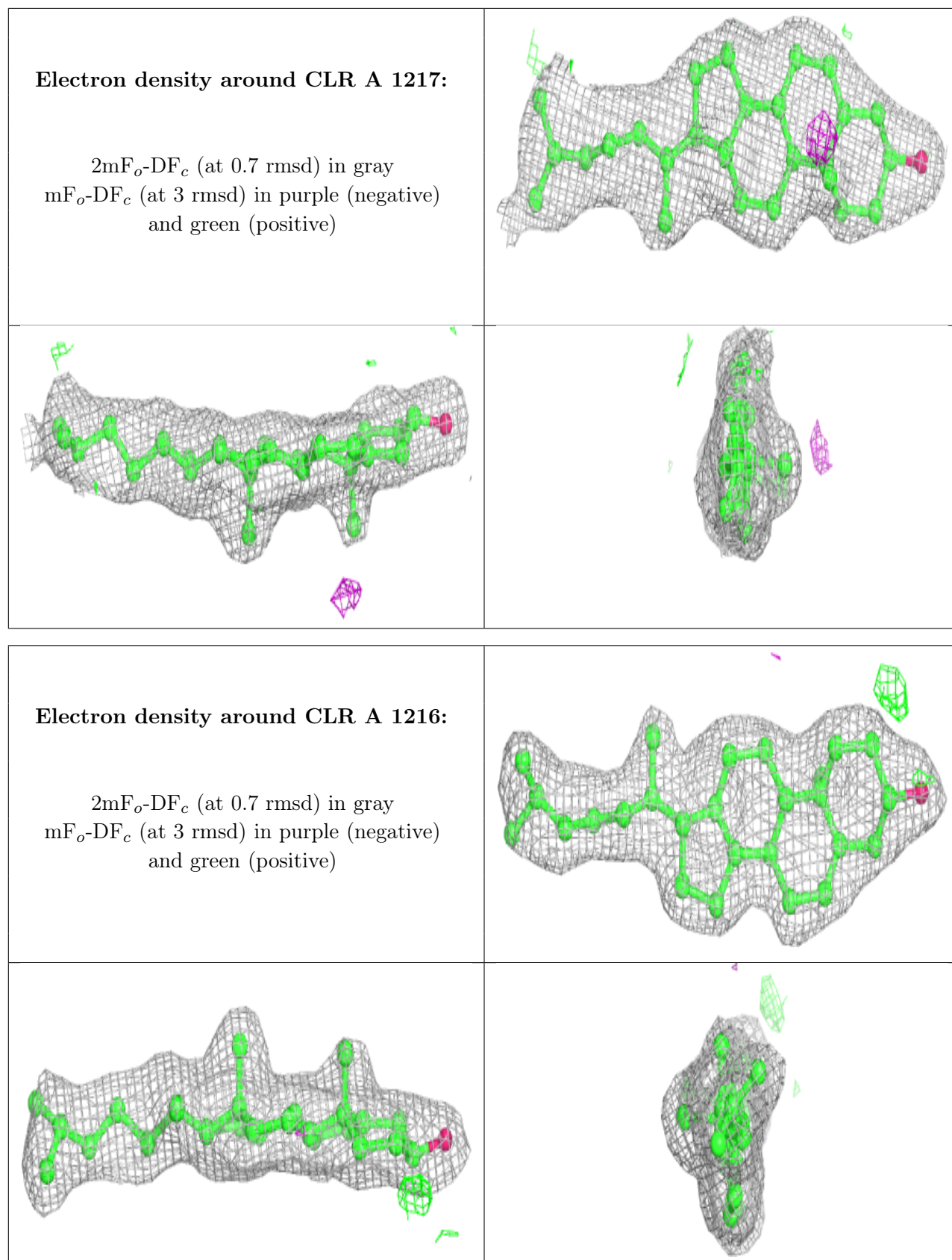
Electron density around OLA A 1208:

$2mF_o-DF_c$ (at 0.7 rmsd) in gray
 mF_o-DF_c (at 3 rmsd) in purple (negative)
and green (positive)

**Electron density around OLA A 1219:**

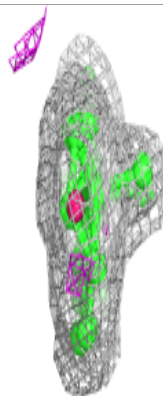
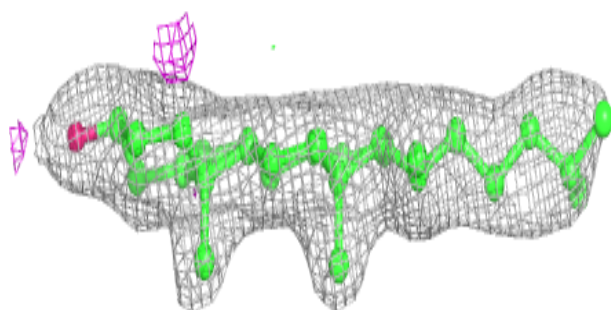
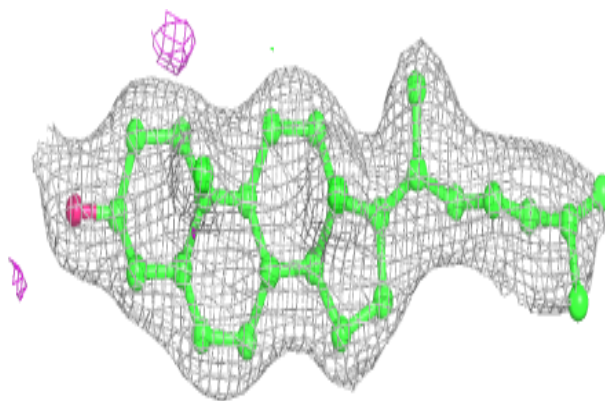
$2mF_o-DF_c$ (at 0.7 rmsd) in gray
 mF_o-DF_c (at 3 rmsd) in purple (negative)
and green (positive)



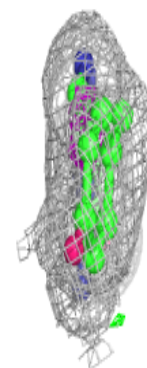
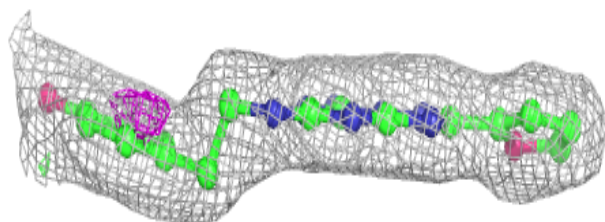
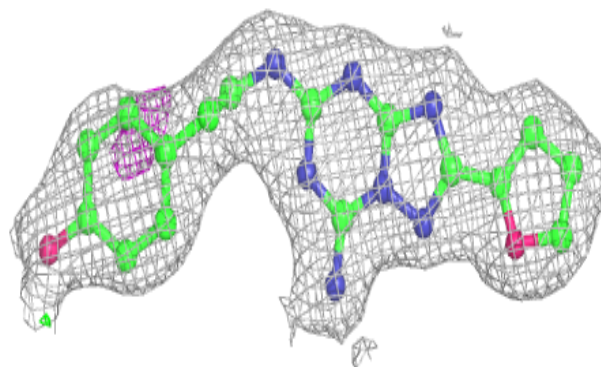


Electron density around CLR A 1203:

$2mF_o-DF_c$ (at 0.7 rmsd) in gray
 mF_o-DF_c (at 3 rmsd) in purple (negative)
and green (positive)

**Electron density around ZMA A 1202:**

$2mF_o-DF_c$ (at 0.7 rmsd) in gray
 mF_o-DF_c (at 3 rmsd) in purple (negative)
and green (positive)



6.5 Other polymers [i](#)

There are no such residues in this entry.