



wwPDB X-ray Structure Validation Summary Report ⓘ

Oct 5, 2023 – 06:24 AM EDT

PDB ID : 6V63
Title : SETD3 WT in Complex with an Actin Peptide with His73 Replaced with Glutamine
Authors : Dai, S.; Horton, J.R.; Cheng, X.
Deposited on : 2019-12-04
Resolution : 2.02 Å(reported)

This is a wwPDB X-ray Structure Validation Summary Report for a publicly released PDB entry.

We welcome your comments at validation@mail.wwpdb.org

A user guide is available at

<https://www.wwpdb.org/validation/2017/XrayValidationReportHelp>

with specific help available everywhere you see the ⓘ symbol.

The types of validation reports are described at

<http://www.wwpdb.org/validation/2017/FAQs#types>.

The following versions of software and data (see [references ⓘ](#)) were used in the production of this report:

MolProbity : **FAILED**
Mogul : 1.8.5 (274361), CSD as541be (2020)
Xtrriage (Phenix) : 1.13
EDS : **FAILED**
buster-report : 1.1.7 (2018)
Percentile statistics : 20191225.v01 (using entries in the PDB archive December 25th 2019)
Ideal geometry (proteins) : Engh & Huber (2001)
Ideal geometry (DNA, RNA) : Parkinson et al. (1996)
Validation Pipeline (wwPDB-VP) : 2.35.1

1 Overall quality at a glance

The following experimental techniques were used to determine the structure:

X-RAY DIFFRACTION

The reported resolution of this entry is 2.02 Å.

There are no overall percentile quality scores available for this entry.

MolProbity and EDS failed to run properly - the sequence quality summary graphics cannot be shown.

2 Entry composition [i](#)

There are 7 unique types of molecules in this entry. The entry contains 8985 atoms, of which 0 are hydrogens and 0 are deuteriums.

In the tables below, the ZeroOcc column contains the number of atoms modelled with zero occupancy, the AltConf column contains the number of residues with at least one atom in alternate conformation and the Trace column contains the number of residues modelled with at most 2 atoms.

- Molecule 1 is a protein called Actin, cytoplasmic 1.

Mol	Chain	Residues	Atoms					ZeroOcc	AltConf	Trace
			Total	C	N	O	S			
1	Y	19	149	96	23	29	1	0	0	0
1	Z	19	149	96	23	29	1	0	0	0

There are 2 discrepancies between the modelled and reference sequences:

Chain	Residue	Modelled	Actual	Comment	Reference
Y	73	GLN	HIS	engineered mutation	UNP C9JUM1
Z	73	GLN	HIS	engineered mutation	UNP C9JUM1

- Molecule 2 is a protein called Actin-histidine N-methyltransferase.

Mol	Chain	Residues	Atoms					ZeroOcc	AltConf	Trace
			Total	C	N	O	S			
2	A	484	3911	2504	656	734	17	0	6	0
2	B	483	3896	2495	655	728	18	0	4	0

There are 4 discrepancies between the modelled and reference sequences:

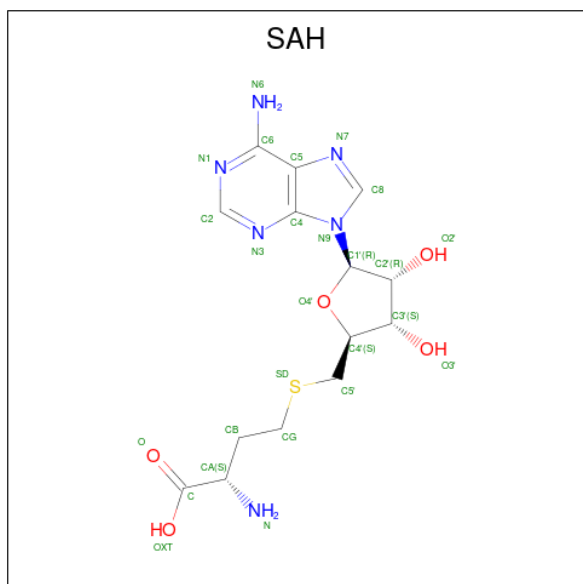
Chain	Residue	Modelled	Actual	Comment	Reference
A	-2	GLY	-	expression tag	UNP Q86TU7
A	-1	SER	-	expression tag	UNP Q86TU7
B	-2	GLY	-	expression tag	UNP Q86TU7
B	-1	SER	-	expression tag	UNP Q86TU7

- Molecule 3 is GLYCEROL (three-letter code: GOL) (formula: C₃H₈O₃).



Mol	Chain	Residues	Atoms			ZeroOcc	AltConf
3	Y	1	Total	C	O	0	0
			6	3	3		
3	A	1	Total	C	O	0	0
			6	3	3		

- Molecule 4 is S-ADENOSYL-L-HOMOCYSTEINE (three-letter code: SAH) (formula: $C_{14}H_{20}N_6O_5S$).



Mol	Chain	Residues	Atoms					ZeroOcc	AltConf
4	A	1	Total	C	N	O	S	0	0
			26	14	6	5	1		

Continued on next page...

Continued from previous page...

Mol	Chain	Residues	Atoms					ZeroOcc	AltConf
			Total	C	N	O	S		
4	B	1	26	14	6	5	1	0	0

- Molecule 5 is 1,2-ETHANEDIOL (three-letter code: EDO) (formula: C₂H₆O₂).



Mol	Chain	Residues	Atoms			ZeroOcc	AltConf
5	A	1	Total	C	O	0	0
			4	2	2		
5	A	1	Total	C	O	0	0
			4	2	2		
5	A	1	Total	C	O	0	0
			4	2	2		
5	A	1	Total	C	O	0	0
			4	2	2		
5	A	1	Total	C	O	0	0
			4	2	2		
5	A	1	Total	C	O	0	0
			4	2	2		
5	A	1	Total	C	O	0	0
			4	2	2		

Continued on next page...

Continued from previous page...

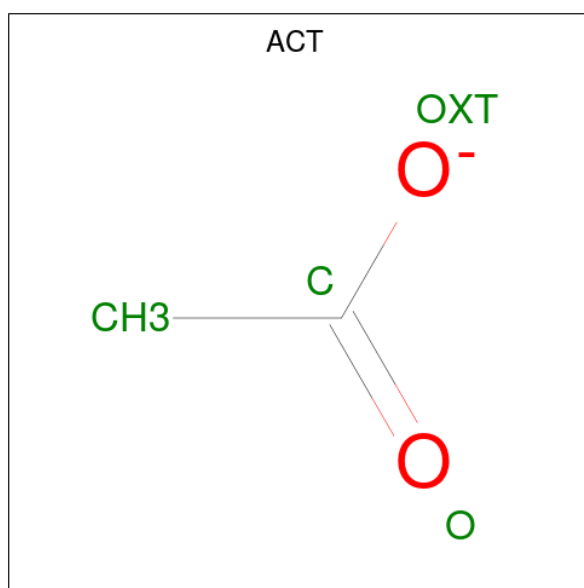
Mol	Chain	Residues	Atoms			ZeroOcc	AltConf
5	A	1	Total 4	C 2	O 2	0	0
5	A	1	Total 4	C 2	O 2	0	0
5	A	1	Total 4	C 2	O 2	0	0
5	A	1	Total 4	C 2	O 2	0	0
5	A	1	Total 4	C 2	O 2	0	0
5	A	1	Total 4	C 2	O 2	0	0
5	A	1	Total 4	C 2	O 2	0	0
5	A	1	Total 4	C 2	O 2	0	0
5	A	1	Total 4	C 2	O 2	0	0
5	A	1	Total 4	C 2	O 2	0	0
5	Z	1	Total 4	C 2	O 2	0	0
5	B	1	Total 4	C 2	O 2	0	0
5	B	1	Total 4	C 2	O 2	0	0
5	B	1	Total 4	C 2	O 2	0	0
5	B	1	Total 4	C 2	O 2	0	0
5	B	1	Total 4	C 2	O 2	0	0
5	B	1	Total 4	C 2	O 2	0	0
5	B	1	Total 4	C 2	O 2	0	0
5	B	1	Total 4	C 2	O 2	0	0
5	B	1	Total 4	C 2	O 2	0	0
5	B	1	Total 4	C 2	O 2	0	0

Continued on next page...

Continued from previous page...

Mol	Chain	Residues	Atoms			ZeroOcc	AltConf
5	B	1	Total	C	O	0	0
			4	2	2		
5	B	1	Total	C	O	0	0
			4	2	2		
5	B	1	Total	C	O	0	0
			4	2	2		
5	B	1	Total	C	O	0	0
			4	2	2		

- Molecule 6 is ACETATE ION (three-letter code: ACT) (formula: C₂H₃O₂).



Mol	Chain	Residues	Atoms			ZeroOcc	AltConf
6	A	1	Total	C	O	0	0
			4	2	2		

- Molecule 7 is water.

Mol	Chain	Residues	Atoms		ZeroOcc	AltConf
7	Y	12	Total	O	0	0
			12	12		
7	A	330	Total	O	0	1
			331	331		
7	Z	12	Total	O	0	0
			12	12		

Continued on next page...

Continued from previous page...

Mol	Chain	Residues	Atoms		ZeroOcc	AltConf
7	B	313	Total 313	O 313	0	0

MolProbity and EDS failed to run properly - this section is therefore empty.

3 Data and refinement statistics i

EDS failed to run properly - this section is therefore incomplete.

Property	Value	Source
Space group	P 1 21 1	Depositor
Cell constants a, b, c, α , β , γ	60.34Å 175.79Å 66.81Å 90.00° 92.37° 90.00°	Depositor
Resolution (Å)	36.71 – 2.02	Depositor
% Data completeness (in resolution range)	92.9 (36.71-2.02)	Depositor
R_{merge}	(Not available)	Depositor
R_{sym}	(Not available)	Depositor
$\langle I/\sigma(I) \rangle$ ¹	1.39 (at 2.01Å)	Xtrriage
Refinement program	PHENIX (1.15.2_3472)	Depositor
R, R_{free}	0.166 , 0.199	Depositor
Wilson B-factor (Å ²)	23.2	Xtrriage
Anisotropy	0.712	Xtrriage
L-test for twinning ²	$\langle L \rangle = 0.49$, $\langle L^2 \rangle = 0.32$	Xtrriage
Estimated twinning fraction	0.039 for h,-k,-l	Xtrriage
Total number of atoms	8985	wwPDB-VP
Average B, all atoms (Å ²)	27.0	wwPDB-VP

Xtrriage's analysis on translational NCS is as follows: *The largest off-origin peak in the Patterson function is 4.23% of the height of the origin peak. No significant pseudotranslation is detected.*

¹Intensities estimated from amplitudes.

²Theoretical values of $\langle |L| \rangle$, $\langle L^2 \rangle$ for acentric reflections are 0.5, 0.333 respectively for untwinned datasets, and 0.375, 0.2 for perfectly twinned datasets.

4 Model quality [i](#)

4.1 Standard geometry [i](#)

MolProbity failed to run properly - this section is therefore empty.

4.2 Too-close contacts [i](#)

MolProbity failed to run properly - this section is therefore empty.

4.3 Torsion angles [i](#)

4.3.1 Protein backbone [i](#)

MolProbity failed to run properly - this section is therefore empty.

4.3.2 Protein sidechains [i](#)

MolProbity failed to run properly - this section is therefore empty.

4.3.3 RNA [i](#)

MolProbity failed to run properly - this section is therefore empty.

4.4 Non-standard residues in protein, DNA, RNA chains [i](#)

There are no non-standard protein/DNA/RNA residues in this entry.

4.5 Carbohydrates [i](#)

There are no monosaccharides in this entry.

4.6 Ligand geometry [i](#)

41 ligands are modelled in this entry.

In the following table, the Counts columns list the number of bonds (or angles) for which Mogul statistics could be retrieved, the number of bonds (or angles) that are observed in the model and the number of bonds (or angles) that are defined in the Chemical Component Dictionary. The Link column lists molecule types, if any, to which the group is linked. The Z score for a bond

length (or angle) is the number of standard deviations the observed value is removed from the expected value. A bond length (or angle) with $|Z| > 2$ is considered an outlier worth inspection. RMSZ is the root-mean-square of all Z scores of the bond lengths (or angles).

Mol	Type	Chain	Res	Link	Bond lengths			Bond angles		
					Counts	RMSZ	# Z > 2	Counts	RMSZ	# Z > 2
5	EDO	A	603	-	3,3,3	0.41	0	2,2,2	0.70	0
5	EDO	A	622	-	3,3,3	0.46	0	2,2,2	0.33	0
5	EDO	Z	101	-	3,3,3	0.45	0	2,2,2	0.35	0
5	EDO	A	605	-	3,3,3	0.38	0	2,2,2	0.53	0
5	EDO	B	1009	-	3,3,3	0.47	0	2,2,2	0.33	0
5	EDO	B	1005	-	3,3,3	0.47	0	2,2,2	0.33	0
3	GOL	A	602	-	5,5,5	0.93	0	5,5,5	0.96	0
3	GOL	Y	101	-	5,5,5	1.03	0	5,5,5	0.85	0
5	EDO	A	609	-	3,3,3	0.43	0	2,2,2	0.39	0
5	EDO	A	620	-	3,3,3	0.45	0	2,2,2	0.18	0
5	EDO	A	611	-	3,3,3	0.44	0	2,2,2	0.35	0
5	EDO	B	1006	-	3,3,3	0.43	0	2,2,2	0.41	0
5	EDO	A	604	-	3,3,3	0.48	0	2,2,2	0.35	0
5	EDO	A	606	-	3,3,3	0.46	0	2,2,2	0.39	0
5	EDO	A	616	-	3,3,3	0.51	0	2,2,2	0.24	0
5	EDO	B	1008	-	3,3,3	0.45	0	2,2,2	0.50	0
5	EDO	B	1014	-	3,3,3	0.41	0	2,2,2	0.49	0
5	EDO	A	614	-	3,3,3	0.47	0	2,2,2	0.20	0
5	EDO	B	1003	-	3,3,3	0.45	0	2,2,2	0.47	0
5	EDO	A	607	-	3,3,3	0.50	0	2,2,2	0.23	0
5	EDO	B	1007	-	3,3,3	0.48	0	2,2,2	0.37	0
5	EDO	B	1004	-	3,3,3	0.48	0	2,2,2	0.43	0
5	EDO	B	1013	-	3,3,3	0.54	0	2,2,2	0.22	0
5	EDO	B	1015	-	3,3,3	0.45	0	2,2,2	0.40	0
5	EDO	B	1016	-	3,3,3	0.51	0	2,2,2	0.20	0
5	EDO	B	1012	-	3,3,3	0.45	0	2,2,2	0.37	0
5	EDO	A	612	-	3,3,3	0.46	0	2,2,2	0.35	0
5	EDO	A	613	-	3,3,3	0.45	0	2,2,2	0.42	0
5	EDO	A	623	-	3,3,3	0.49	0	2,2,2	0.32	0
5	EDO	B	1010	-	3,3,3	0.44	0	2,2,2	0.40	0
4	SAH	A	601	-	24,28,28	1.15	2 (8%)	25,40,40	1.59	5 (20%)
6	ACT	A	621	-	3,3,3	1.34	0	3,3,3	1.51	0
5	EDO	A	618	-	3,3,3	0.43	0	2,2,2	0.47	0
5	EDO	B	1011	-	3,3,3	0.47	0	2,2,2	0.41	0
5	EDO	A	617	-	3,3,3	0.50	0	2,2,2	0.14	0
5	EDO	A	615	-	3,3,3	0.44	0	2,2,2	0.48	0
5	EDO	A	610	-	3,3,3	0.50	0	2,2,2	0.31	0
4	SAH	B	1001	-	24,28,28	1.14	3 (12%)	25,40,40	1.61	4 (16%)
5	EDO	B	1002	-	3,3,3	0.48	0	2,2,2	0.25	0

Mol	Type	Chain	Res	Link	Bond lengths			Bond angles		
					Counts	RMSZ	# Z > 2	Counts	RMSZ	# Z > 2
5	EDO	A	608	-	3,3,3	0.41	0	2,2,2	0.60	0
5	EDO	A	619	-	3,3,3	0.51	0	2,2,2	0.28	0

In the following table, the Chirals column lists the number of chiral outliers, the number of chiral centers analysed, the number of these observed in the model and the number defined in the Chemical Component Dictionary. Similar counts are reported in the Torsion and Rings columns. '2' means no outliers of that kind were identified.

Mol	Type	Chain	Res	Link	Chirals	Torsions	Rings
5	EDO	A	603	-	-	1/1/1/1	-
5	EDO	A	622	-	-	0/1/1/1	-
5	EDO	Z	101	-	-	0/1/1/1	-
5	EDO	A	605	-	-	0/1/1/1	-
5	EDO	B	1009	-	-	0/1/1/1	-
5	EDO	B	1005	-	-	0/1/1/1	-
3	GOL	A	602	-	-	0/4/4/4	-
3	GOL	Y	101	-	-	2/4/4/4	-
5	EDO	A	609	-	-	0/1/1/1	-
5	EDO	A	620	-	-	0/1/1/1	-
5	EDO	A	611	-	-	0/1/1/1	-
5	EDO	B	1006	-	-	0/1/1/1	-
5	EDO	A	604	-	-	0/1/1/1	-
5	EDO	A	606	-	-	0/1/1/1	-
5	EDO	A	616	-	-	0/1/1/1	-
5	EDO	B	1008	-	-	0/1/1/1	-
5	EDO	B	1014	-	-	0/1/1/1	-
5	EDO	A	614	-	-	0/1/1/1	-
5	EDO	B	1003	-	-	0/1/1/1	-
5	EDO	A	607	-	-	0/1/1/1	-
5	EDO	B	1007	-	-	0/1/1/1	-
5	EDO	B	1004	-	-	0/1/1/1	-
5	EDO	B	1013	-	-	0/1/1/1	-
5	EDO	B	1015	-	-	0/1/1/1	-
5	EDO	B	1016	-	-	1/1/1/1	-
5	EDO	B	1012	-	-	0/1/1/1	-
5	EDO	A	612	-	-	0/1/1/1	-
5	EDO	A	613	-	-	0/1/1/1	-
5	EDO	A	623	-	-	0/1/1/1	-
5	EDO	B	1010	-	-	0/1/1/1	-
4	SAH	A	601	-	-	2/11/31/31	0/3/3/3
5	EDO	A	618	-	-	0/1/1/1	-
5	EDO	B	1011	-	-	1/1/1/1	-

Continued on next page...

Continued from previous page...

Mol	Type	Chain	Res	Link	Chirals	Torsions	Rings
5	EDO	A	617	-	-	0/1/1/1	-
5	EDO	A	615	-	-	0/1/1/1	-
5	EDO	A	610	-	-	1/1/1/1	-
4	SAH	B	1001	-	-	2/11/31/31	0/3/3/3
5	EDO	B	1002	-	-	0/1/1/1	-
5	EDO	A	608	-	-	0/1/1/1	-
5	EDO	A	619	-	-	0/1/1/1	-

All (5) bond length outliers are listed below:

Mol	Chain	Res	Type	Atoms	Z	Observed(Å)	Ideal(Å)
4	A	601	SAH	C2-N3	3.64	1.38	1.32
4	B	1001	SAH	C2-N3	3.60	1.37	1.32
4	B	1001	SAH	C2-N1	2.21	1.38	1.33
4	A	601	SAH	C2-N1	2.20	1.38	1.33
4	B	1001	SAH	OXT-C	-2.03	1.23	1.30

The worst 5 of 9 bond angle outliers are listed below:

Mol	Chain	Res	Type	Atoms	Z	Observed(°)	Ideal(°)
4	B	1001	SAH	N3-C2-N1	-5.54	120.02	128.68
4	A	601	SAH	N3-C2-N1	-5.49	120.10	128.68
4	B	1001	SAH	C5'-SD-CG	-2.71	94.14	102.27
4	B	1001	SAH	OXT-C-O	-2.67	118.02	124.09
4	B	1001	SAH	OXT-C-CA	2.48	121.83	113.38

There are no chirality outliers.

5 of 10 torsion outliers are listed below:

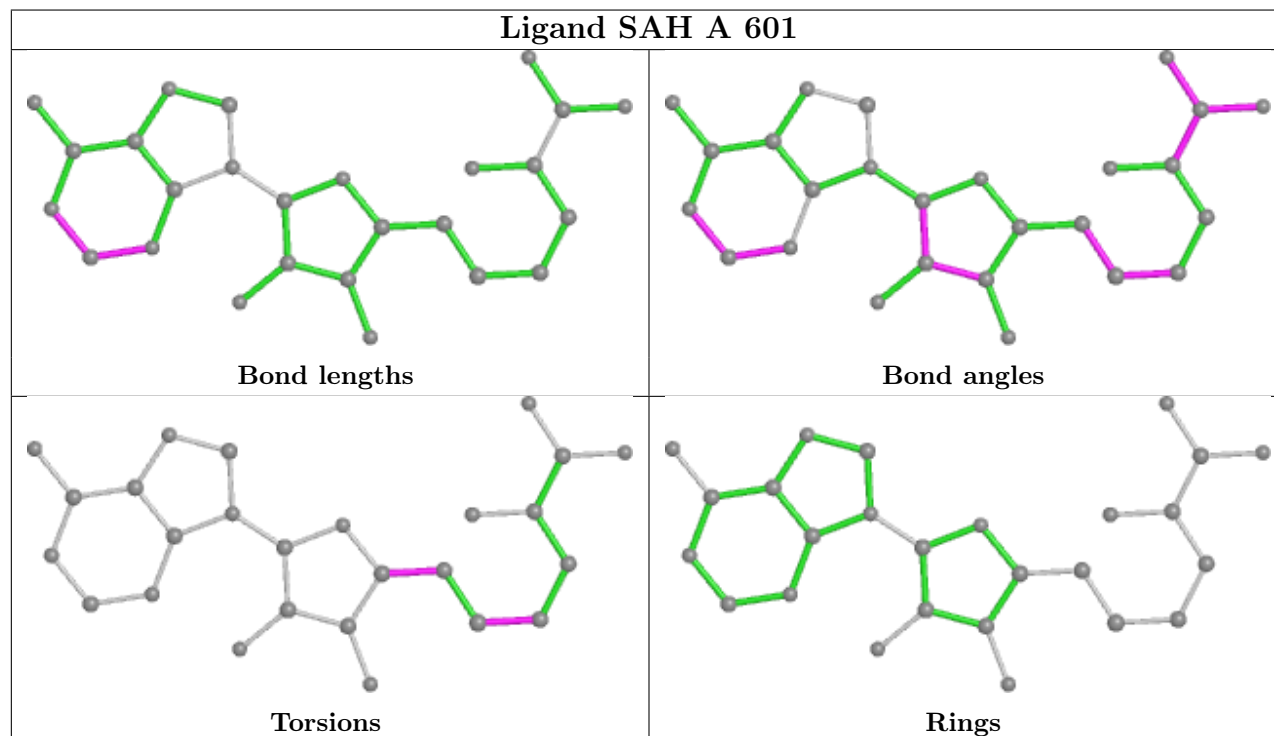
Mol	Chain	Res	Type	Atoms
5	A	610	EDO	O1-C1-C2-O2
4	A	601	SAH	C3'-C4'-C5'-SD
4	B	1001	SAH	C3'-C4'-C5'-SD
4	A	601	SAH	CB-CG-SD-C5'
4	B	1001	SAH	CB-CG-SD-C5'

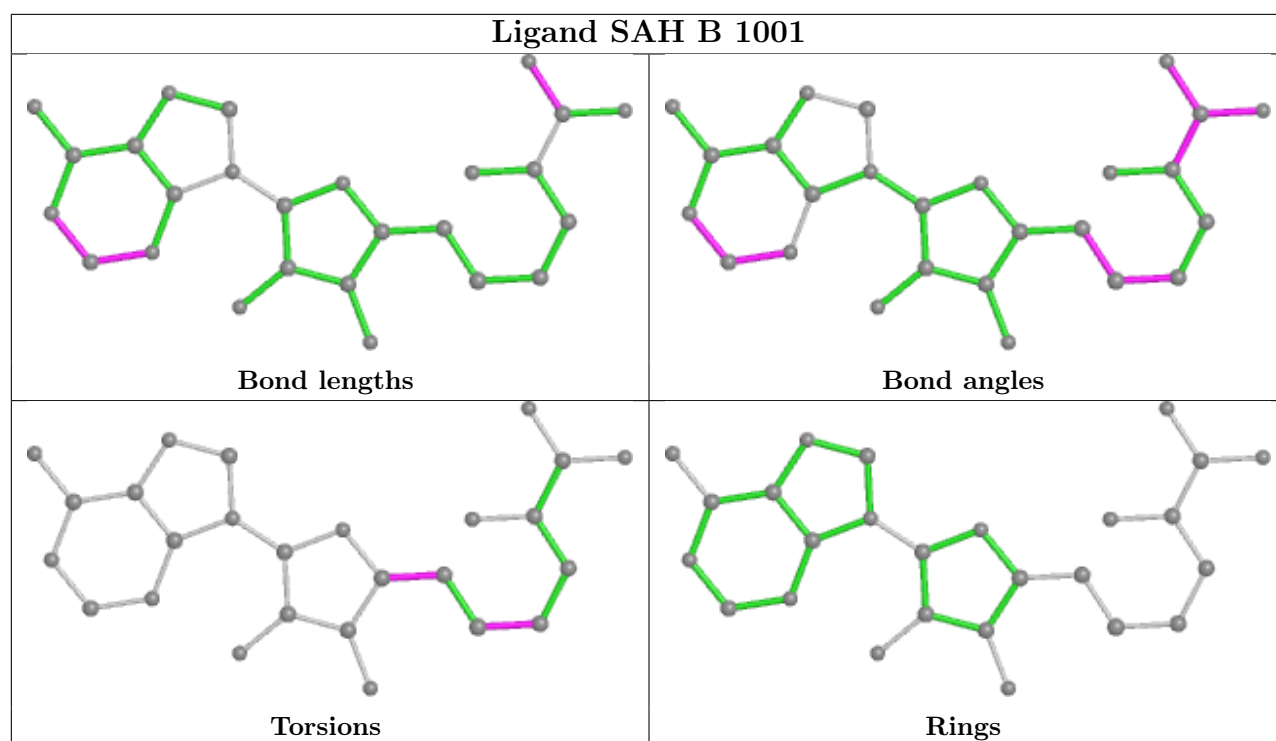
There are no ring outliers.

No monomer is involved in short contacts.

The following is a two-dimensional graphical depiction of Mogul quality analysis of bond lengths, bond angles, torsion angles, and ring geometry for all instances of the Ligand of Interest. In

addition, ligands with molecular weight > 250 and outliers as shown on the validation Tables will also be included. For torsion angles, if less than 5% of the Mogul distribution of torsion angles is within 10 degrees of the torsion angle in question, then that torsion angle is considered an outlier. Any bond that is central to one or more torsion angles identified as an outlier by Mogul will be highlighted in the graph. For rings, the root-mean-square deviation (RMSD) between the ring in question and similar rings identified by Mogul is calculated over all ring torsion angles. If the average RMSD is greater than 60 degrees and the minimal RMSD between the ring in question and any Mogul-identified rings is also greater than 60 degrees, then that ring is considered an outlier. The outliers are highlighted in purple. The color gray indicates Mogul did not find sufficient equivalents in the CSD to analyse the geometry.





4.7 Other polymers [i](#)

There are no such residues in this entry.

4.8 Polymer linkage issues [i](#)

There are no chain breaks in this entry.

5 Fit of model and data

5.1 Protein, DNA and RNA chains

EDS failed to run properly - this section is therefore empty.

5.2 Non-standard residues in protein, DNA, RNA chains

EDS failed to run properly - this section is therefore empty.

5.3 Carbohydrates

EDS failed to run properly - this section is therefore empty.

5.4 Ligands

EDS failed to run properly - this section is therefore empty.

5.5 Other polymers

EDS failed to run properly - this section is therefore empty.