



Full wwPDB EM Validation Report ⓘ

May 18, 2024 – 07:19 pm BST

PDB ID : 6T9J
EMDB ID : EMD-10413
Title : SAGA Tra1 module
Authors : Wang, H.; Cheung, A.; Cramer, P.
Deposited on : 2019-10-28
Resolution : 3.40 Å (reported)

This is a Full wwPDB EM Validation Report for a publicly released PDB entry.

We welcome your comments at validation@mail.wwpdb.org

A user guide is available at

<https://www.wwpdb.org/validation/2017/EMValidationReportHelp>

with specific help available everywhere you see the ⓘ symbol.

The types of validation reports are described at

<http://www.wwpdb.org/validation/2017/FAQs#types>.

The following versions of software and data (see [references ⓘ](#)) were used in the production of this report:

EMDB validation analysis : 0.0.1.dev92
MolProbity : 4.02b-467
Percentile statistics : 20191225.v01 (using entries in the PDB archive December 25th 2019)
MapQ : 1.9.13
Ideal geometry (proteins) : Engh & Huber (2001)
Ideal geometry (DNA, RNA) : Parkinson et al. (1996)
Validation Pipeline (wwPDB-VP) : 2.36.2

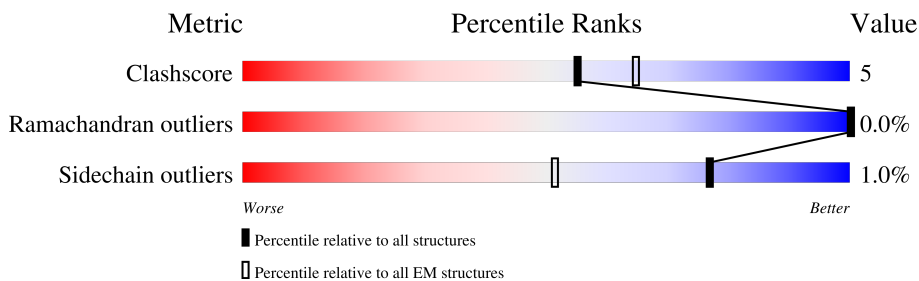
1 Overall quality at a glance

The following experimental techniques were used to determine the structure:

ELECTRON MICROSCOPY

The reported resolution of this entry is 3.40 Å.

Percentile scores (ranging between 0-100) for global validation metrics of the entry are shown in the following graphic. The table shows the number of entries on which the scores are based.



Metric	Whole archive (#Entries)	EM structures (#Entries)
Clashscore	158937	4297
Ramachandran outliers	154571	4023
Sidechain outliers	154315	3826

The table below summarises the geometric issues observed across the polymeric chains and their fit to the map. The red, orange, yellow and green segments of the bar indicate the fraction of residues that contain outliers for ≥ 3 , 2, 1 and 0 types of geometric quality criteria respectively. A grey segment represents the fraction of residues that are not modelled. The numeric value for each fraction is indicated below the corresponding segment, with a dot representing fractions $\leq 5\%$. The upper red bar (where present) indicates the fraction of residues that have poor fit to the EM map (all-atom inclusion $< 40\%$). The numeric value is given above the bar.

Mol	Chain	Length	Quality of chain
1	B	604	5% . 93%
2	I	539	9% . 89%
3	T	3744	10% 80% 14% 6%

2 Entry composition [i](#)

There are 3 unique types of molecules in this entry. The entry contains 29550 atoms, of which 0 are hydrogens and 0 are deuteriums.

In the tables below, the AltConf column contains the number of residues with at least one atom in alternate conformation and the Trace column contains the number of residues modelled with at most 2 atoms.

- Molecule 1 is a protein called Transcription factor SPT20.

Mol	Chain	Residues	Atoms					AltConf	Trace
			Total	C	N	O	S		
1	B	43	365	232	64	67	2	0	0

- Molecule 2 is a protein called Transcription initiation factor TFIID subunit 12.

Mol	Chain	Residues	Atoms					AltConf	Trace
			Total	C	N	O	S		
2	I	61	456	284	79	91	2	0	0

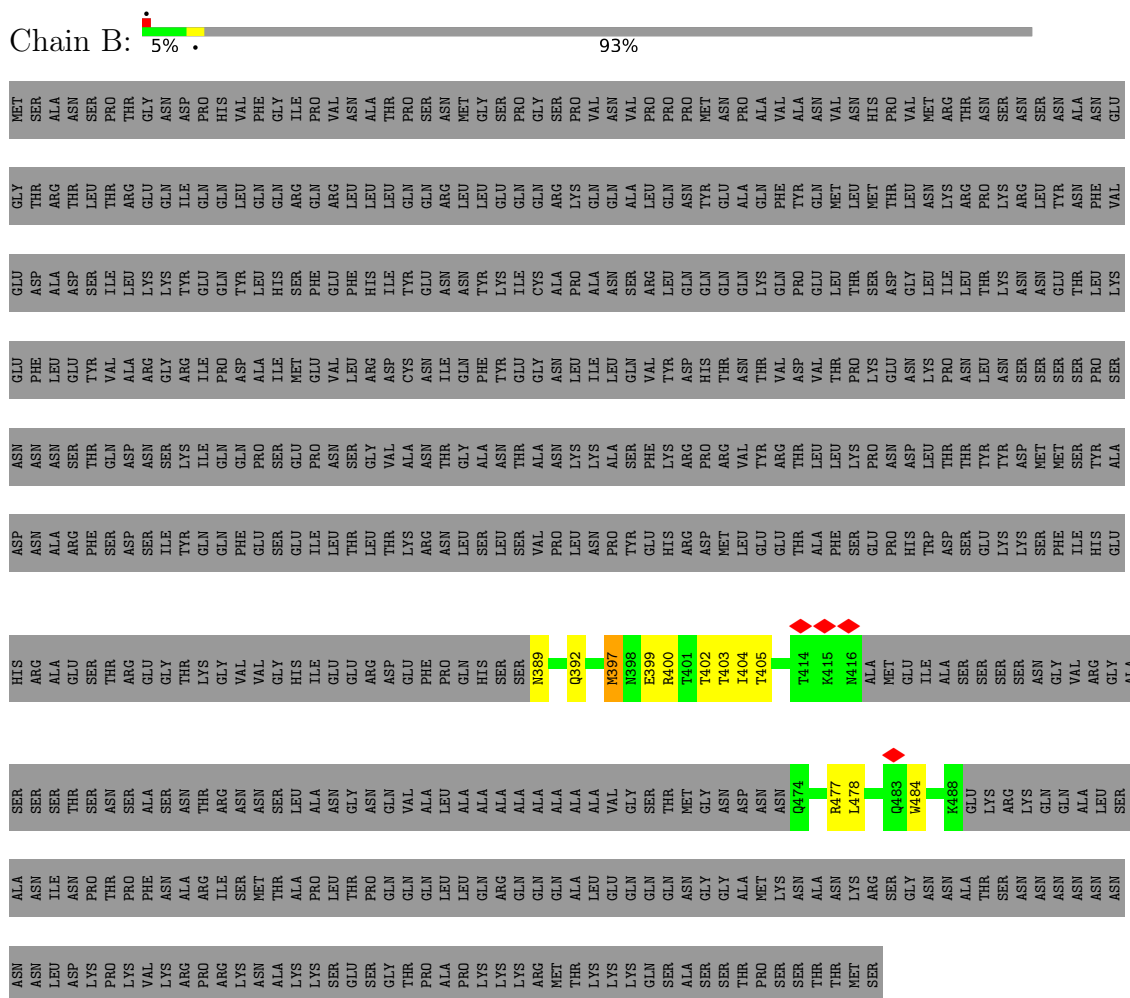
- Molecule 3 is a protein called Transcription-associated protein 1.

Mol	Chain	Residues	Atoms					AltConf	Trace
			Total	C	N	O	S		
3	T	3513	28729	18596	4776	5237	120	0	0

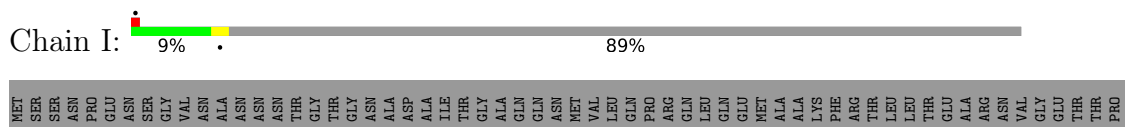
3 Residue-property plots

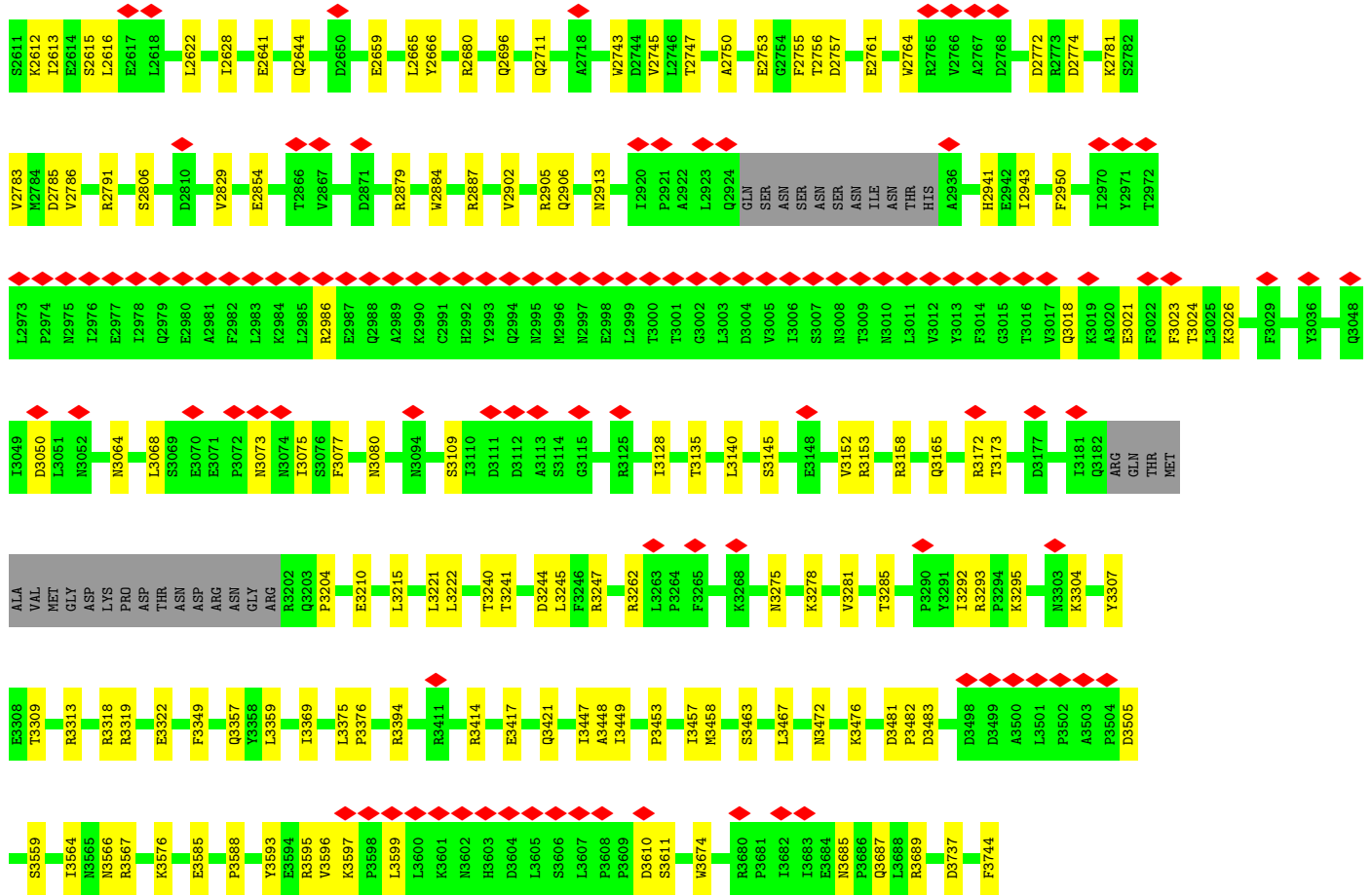
These plots are drawn for all protein, RNA, DNA and oligosaccharide chains in the entry. The first graphic for a chain summarises the proportions of the various outlier classes displayed in the second graphic. The second graphic shows the sequence view annotated by issues in geometry and atom inclusion in map density. Residues are color-coded according to the number of geometric quality criteria for which they contain at least one outlier: green = 0, yellow = 1, orange = 2 and red = 3 or more. A red diamond above a residue indicates a poor fit to the EM map for this residue (all-atom inclusion < 40%). Stretches of 2 or more consecutive residues without any outlier are shown as a green connector. Residues present in the sample, but not in the model, are shown in grey.

- Molecule 1: Transcription factor SPT20



- Molecule 2: Transcription initiation factor TFIID subunit 12





4 Experimental information

Property	Value	Source
EM reconstruction method	SINGLE PARTICLE	Depositor
Imposed symmetry	POINT, C1	Depositor
Number of particles used	27602	Depositor
Resolution determination method	FSC 0.143 CUT-OFF	Depositor
CTF correction method	PHASE FLIPPING AND AMPLITUDE CORRECTION	Depositor
Microscope	FEI TITAN KRIOS	Depositor
Voltage (kV)	300	Depositor
Electron dose ($e^-/\text{\AA}^2$)	42.45	Depositor
Minimum defocus (nm)	Not provided	
Maximum defocus (nm)	Not provided	
Magnification	Not provided	
Image detector	GATAN K2 SUMMIT (4k x 4k)	Depositor
Maximum map value	0.549	Depositor
Minimum map value	-0.267	Depositor
Average map value	0.001	Depositor
Map value standard deviation	0.009	Depositor
Recommended contour level	0.07	Depositor
Map size (Å)	419.99997, 419.99997, 419.99997	wwPDB
Map dimensions	400, 400, 400	wwPDB
Map angles (°)	90.0, 90.0, 90.0	wwPDB
Pixel spacing (Å)	1.05, 1.05, 1.05	Depositor

5 Model quality [i](#)

5.1 Standard geometry [i](#)

The Z score for a bond length (or angle) is the number of standard deviations the observed value is removed from the expected value. A bond length (or angle) with $|Z| > 5$ is considered an outlier worth inspection. RMSZ is the root-mean-square of all Z scores of the bond lengths (or angles).

Mol	Chain	Bond lengths		Bond angles	
		RMSZ	# Z >5	RMSZ	# Z >5
1	B	0.33	0/369	0.51	0/494
2	I	0.40	0/466	0.70	1/638 (0.2%)
3	T	0.39	0/29358	0.60	13/39779 (0.0%)
All	All	0.39	0/30193	0.60	14/40911 (0.0%)

There are no bond length outliers.

All (14) bond angle outliers are listed below:

Mol	Chain	Res	Type	Atoms	Z	Observed(°)	Ideal(°)
3	T	1291	ASP	CB-CG-OD2	6.86	124.48	118.30
3	T	855	ARG	NE-CZ-NH1	6.79	123.70	120.30
3	T	2504	LEU	CA-CB-CG	6.42	130.06	115.30
3	T	785	LEU	CA-CB-CG	6.34	129.89	115.30
3	T	1368	LEU	CA-CB-CG	6.29	129.77	115.30
3	T	62	VAL	CA-CB-CG1	6.27	120.31	110.90
3	T	2301	LEU	CA-CB-CG	5.78	128.59	115.30
3	T	252	LEU	CA-CB-CG	5.75	128.53	115.30
3	T	1586	LEU	CA-CB-CG	5.55	128.07	115.30
3	T	872	LEU	CA-CB-CG	5.48	127.90	115.30
3	T	2465	ASP	C-N-CA	5.14	134.56	121.70
2	I	385	ILE	C-N-CA	5.14	134.56	121.70
3	T	851	LEU	CA-CB-CG	5.12	127.08	115.30
3	T	241	LEU	CA-CB-CG	5.12	127.08	115.30

There are no chirality outliers.

There are no planarity outliers.

5.2 Too-close contacts [i](#)

In the following table, the Non-H and H(model) columns list the number of non-hydrogen atoms and hydrogen atoms in the chain respectively. The H(added) column lists the number of hydrogen

atoms added and optimized by MolProbity. The Clashes column lists the number of clashes within the asymmetric unit, whereas Symm-Clashes lists symmetry-related clashes.

Mol	Chain	Non-H	H(model)	H(added)	Clashes	Symm-Clashes
1	B	365	0	371	10	0
2	I	456	0	460	8	0
3	T	28729	0	29144	309	0
All	All	29550	0	29975	318	0

The all-atom clashscore is defined as the number of clashes found per 1000 atoms (including hydrogen atoms). The all-atom clashscore for this structure is 5.

All (318) close contacts within the same asymmetric unit are listed below, sorted by their clash magnitude.

Atom-1	Atom-2	Interatomic distance (Å)	Clash overlap (Å)
3:T:3073:ASN:HD21	3:T:3689:ARG:HG2	1.53	0.73
3:T:1007:TYR:HA	3:T:1014:ARG:HH22	1.55	0.71
3:T:2167:VAL:HA	3:T:2170:VAL:HG12	1.74	0.69
3:T:863:ILE:HG13	3:T:864:THR:HG23	1.78	0.65
3:T:867:VAL:HG21	3:T:872:LEU:HA	1.79	0.64
3:T:1685:LEU:HB3	3:T:1688:LYS:HB3	1.80	0.64
3:T:843:ASN:O	3:T:855:ARG:NH1	2.31	0.63
3:T:2373:ALA:HA	3:T:2415:ARG:HH12	1.63	0.63
3:T:2613:ILE:HG22	3:T:2615:SER:H	1.65	0.62
3:T:305:LEU:HA	3:T:308:VAL:HG22	1.81	0.62
3:T:3128:ILE:HD11	3:T:3158:ARG:HD2	1.83	0.61
1:B:399:GLU:OE1	2:I:379:ARG:NH1	2.33	0.61
3:T:612:THR:HB	3:T:1532:VAL:HG11	1.83	0.61
3:T:2761:GLU:HB3	3:T:2764:TRP:HB3	1.83	0.60
3:T:1504:SER:HB2	3:T:1558:ILE:HG22	1.83	0.60
3:T:81:ASP:HA	3:T:84:ASN:HD22	1.66	0.60
3:T:940:ALA:O	3:T:944:ASN:ND2	2.36	0.59
3:T:3145:SER:HA	3:T:3204:PRO:HG3	1.85	0.58
1:B:400:ARG:HA	2:I:381:ASN:HB3	1.85	0.57
3:T:2175:LYS:HB3	3:T:2179:TRP:HB3	1.86	0.57
3:T:2272:VAL:HG23	3:T:2273:PRO:HD3	1.87	0.57
3:T:2422:VAL:HA	3:T:2463:ILE:HD11	1.86	0.57
3:T:2310:LEU:HA	3:T:2313:LYS:HD2	1.87	0.56
3:T:2986:ARG:NH2	3:T:3018:GLN:OE1	2.39	0.56
3:T:2262:VAL:O	3:T:2266:ASN:ND2	2.38	0.56
3:T:3165:GLN:HG3	3:T:3222:LEU:HD21	1.88	0.56
1:B:389:ASN:N	1:B:392:GLN:OE1	2.39	0.56
3:T:339:GLU:HB2	3:T:1897:GLU:HB2	1.87	0.56

Continued on next page...

Continued from previous page...

Atom-1	Atom-2	Interatomic distance (Å)	Clash overlap (Å)
3:T:1327:ASP:O	3:T:1330:LYS:NZ	2.39	0.55
3:T:1756:ILE:HG13	3:T:1757:LYS:HG2	1.87	0.55
3:T:3611:SER:HB3	3:T:3674:TRP:HE1	1.71	0.55
3:T:1750:PHE:O	3:T:1799:ARG:NH1	2.39	0.55
3:T:2474:GLN:HG2	3:T:2546:ILE:HD12	1.87	0.55
3:T:1706:ILE:HG12	3:T:1713:ILE:HG22	1.88	0.55
3:T:2206:LEU:HA	3:T:2209:VAL:HG12	1.89	0.55
3:T:2284:LYS:HA	3:T:2287:LYS:HG2	1.89	0.55
3:T:3285:THR:O	3:T:3293:ARG:NH2	2.39	0.55
3:T:1141:ASP:OD1	3:T:1141:ASP:N	2.39	0.55
3:T:2444:GLU:O	3:T:2450:ARG:NE	2.40	0.55
3:T:373:GLU:O	3:T:374:ARG:NH1	2.39	0.55
3:T:934:PRO:HD3	3:T:2829:VAL:HG21	1.88	0.55
3:T:997:ILE:HD11	3:T:1024:VAL:HG11	1.89	0.55
3:T:2628:ILE:HG13	3:T:2665:LEU:HD21	1.88	0.54
3:T:3244:ASP:OD1	3:T:3247:ARG:NH1	2.41	0.54
3:T:415:ILE:HD11	3:T:463:LEU:HD22	1.89	0.54
3:T:2036:LEU:HD13	3:T:2123:ILE:HG13	1.89	0.54
3:T:93:GLN:HE22	3:T:134:GLN:HB3	1.72	0.54
3:T:1516:VAL:HG21	3:T:1565:GLN:HG2	1.89	0.54
3:T:106:VAL:HG11	3:T:115:GLY:HA3	1.88	0.54
1:B:477:ARG:NH2	3:T:2753:GLU:OE2	2.40	0.54
3:T:85:ARG:NH2	3:T:1975:VAL:O	2.41	0.54
3:T:3564:ILE:HA	3:T:3588:PRO:HA	1.89	0.54
3:T:1386:ASP:OD2	3:T:1412:ARG:NH1	2.40	0.53
3:T:381:PHE:HB2	3:T:1858:ASP:H	1.73	0.53
2:I:376:VAL:HG11	3:T:2786:VAL:HG12	1.91	0.53
3:T:3153:ARG:NH1	3:T:3210:GLU:OE2	2.41	0.53
3:T:310:ILE:HG12	3:T:353:HIS:HB3	1.90	0.53
3:T:3481:ASP:OD1	3:T:3481:ASP:N	2.40	0.53
3:T:2415:ARG:HE	3:T:2419:PRO:HG3	1.73	0.53
3:T:2774:ASP:OD1	3:T:2774:ASP:N	2.41	0.53
3:T:1770:ILE:HG12	3:T:1810:THR:HB	1.91	0.52
3:T:1827:GLU:HG2	3:T:1829:LYS:HG2	1.91	0.52
3:T:3505:ASP:OD1	3:T:3505:ASP:N	2.42	0.52
3:T:3483:ASP:N	3:T:3483:ASP:OD1	2.43	0.52
3:T:678:ASP:OD1	3:T:678:ASP:N	2.43	0.52
3:T:3610:ASP:OD1	3:T:3610:ASP:N	2.42	0.52
3:T:3318:ARG:NH1	3:T:3322:GLU:OE1	2.42	0.52
3:T:624:ARG:H	3:T:694:ASP:HB2	1.75	0.52
3:T:1775:ASN:N	3:T:1775:ASN:OD1	2.41	0.52

Continued on next page...

Continued from previous page...

Atom-1	Atom-2	Interatomic distance (Å)	Clash overlap (Å)
3:T:3075:ILE:HG22	3:T:3077:PHE:H	1.75	0.52
3:T:840:GLN:NE2	3:T:878:PHE:O	2.42	0.52
3:T:1063:LEU:HD13	3:T:3319:ARG:HD3	1.92	0.52
3:T:1667:THR:HG22	3:T:1721:SER:HB3	1.90	0.52
3:T:2488:LEU:HD12	3:T:2491:ILE:HD13	1.91	0.52
3:T:3021:GLU:HA	3:T:3024:THR:HG22	1.92	0.52
3:T:2610:ILE:HD12	3:T:2616:LEU:HD11	1.90	0.51
3:T:773:VAL:HG21	3:T:784:LEU:HD22	1.93	0.51
3:T:447:LEU:HD11	3:T:600:ASP:HB3	1.91	0.51
3:T:1852:ASP:N	3:T:1852:ASP:OD1	2.43	0.51
3:T:3221:LEU:HB3	3:T:3349:PHE:HE2	1.75	0.51
3:T:2089:SER:OG	3:T:2090:LEU:N	2.42	0.51
3:T:2906:GLN:HG2	3:T:2943:ILE:HG23	1.92	0.51
3:T:76:ARG:HH12	3:T:116:ILE:HG13	1.75	0.51
3:T:285:ILE:HG21	3:T:289:PRO:HD3	1.92	0.51
3:T:1601:ASN:ND2	3:T:1632:GLU:O	2.44	0.51
2:I:382:ARG:HG2	2:I:384:THR:HG23	1.92	0.51
3:T:93:GLN:NE2	3:T:134:GLN:OE1	2.44	0.51
3:T:365:PRO:HB3	3:T:398:PHE:HZ	1.76	0.51
3:T:1818:SER:OG	3:T:1819:GLY:N	2.43	0.51
3:T:793:LEU:HG	3:T:831:ILE:HD11	1.93	0.51
3:T:1531:ARG:HB2	3:T:1534:VAL:HG12	1.93	0.51
3:T:412:GLU:HG2	3:T:463:LEU:HD21	1.92	0.51
3:T:3109:SER:OG	3:T:3689:ARG:NH1	2.44	0.51
3:T:17:ASP:OD1	3:T:26:SER:OG	2.29	0.51
3:T:2887:ARG:O	3:T:2905:ARG:NH2	2.38	0.51
3:T:3140:LEU:HD22	3:T:3152:VAL:HG23	1.93	0.51
3:T:507:ILE:HD12	3:T:2168:LEU:HD23	1.92	0.50
3:T:839:LEU:O	3:T:843:ASN:HB2	2.11	0.50
3:T:3597:LYS:HG2	3:T:3599:LEU:H	1.77	0.50
3:T:691:MET:HG2	3:T:730:GLU:HG3	1.93	0.50
3:T:1300:ASN:HB3	3:T:1303:VAL:HG12	1.94	0.50
3:T:2011:MET:HA	3:T:2014:ILE:HG22	1.94	0.50
3:T:9:GLN:O	3:T:13:ARG:NH2	2.44	0.50
3:T:727:LEU:HD13	3:T:772:SER:HB3	1.93	0.50
1:B:403:THR:OG1	1:B:404:ILE:N	2.44	0.50
1:B:484:TRP:HE1	3:T:2745:VAL:HG22	1.77	0.50
3:T:1342:LEU:HD12	3:T:1345:LEU:HD12	1.93	0.50
3:T:3559:SER:HA	3:T:3564:ILE:HG12	1.94	0.50
3:T:610:GLU:OE2	3:T:1582:ARG:NH2	2.44	0.50
3:T:3448:ALA:HB2	3:T:3458:MET:HG3	1.94	0.50

Continued on next page...

Continued from previous page...

Atom-1	Atom-2	Interatomic distance (Å)	Clash overlap (Å)
3:T:1105:ASN:ND2	3:T:2529:SER:OG	2.45	0.49
3:T:2484:LYS:HE3	3:T:2535:ARG:HD2	1.92	0.49
3:T:577:ASN:ND2	3:T:582:ASP:OD2	2.44	0.49
3:T:3319:ARG:HH22	3:T:3476:LYS:HZ2	1.59	0.49
3:T:3359:LEU:HD12	3:T:3447:ILE:HG23	1.95	0.49
1:B:478:LEU:HD22	3:T:2711:GLN:HB3	1.93	0.49
3:T:1774:SER:O	3:T:1774:SER:OG	2.30	0.49
3:T:1503:LEU:O	3:T:1507:LEU:HB2	2.13	0.49
3:T:1062:ASP:N	3:T:1062:ASP:OD1	2.45	0.49
3:T:2289:HIS:HD2	3:T:2292:ILE:HD11	1.77	0.49
3:T:1397:GLN:NE2	3:T:1400:THR:O	2.39	0.49
3:T:2104:VAL:HG21	3:T:2121:ILE:HD11	1.95	0.49
1:B:405:THR:HG21	3:T:2755:PHE:HA	1.95	0.48
2:I:386:THR:HG22	2:I:392:ASN:HB3	1.95	0.48
3:T:1931:LEU:HD13	3:T:1973:VAL:HG11	1.95	0.48
3:T:2581:ARG:HA	3:T:2584:ILE:HD12	1.94	0.48
3:T:3304:LYS:O	3:T:3309:THR:OG1	2.31	0.48
3:T:712:ARG:NH2	3:T:715:GLU:OE2	2.46	0.48
3:T:3467:LEU:HB3	3:T:3744:PHE:HE2	1.78	0.48
3:T:2214:MET:HG2	3:T:2266:ASN:HD21	1.78	0.48
3:T:2461:GLU:O	3:T:2594:ARG:NH2	2.46	0.48
3:T:2470:ASN:HB2	3:T:2556:ILE:HD13	1.96	0.48
3:T:3135:THR:O	3:T:3421:GLN:NE2	2.47	0.48
3:T:1426:GLU:OE1	3:T:1427:GLU:N	2.47	0.48
3:T:2641:GLU:OE2	3:T:2666:TYR:OH	2.31	0.48
3:T:1840:LYS:O	3:T:1840:LYS:NZ	2.35	0.48
3:T:3357:GLN:HE22	3:T:3369:ILE:H	1.61	0.48
3:T:138:ASP:OD1	3:T:138:ASP:N	2.45	0.47
3:T:1199:HIS:HE1	3:T:3376:PRO:HB2	1.79	0.47
3:T:2184:LEU:HD23	3:T:2187:ILE:HD11	1.96	0.47
3:T:2316:TYR:O	3:T:2320:LEU:HB2	2.13	0.47
3:T:1537:THR:O	3:T:1541:GLN:NE2	2.47	0.47
3:T:1377:LEU:HA	3:T:1380:GLU:HG2	1.96	0.47
3:T:1477:LEU:O	3:T:1481:GLY:N	2.46	0.47
3:T:3414:ARG:NH1	3:T:3417:GLU:OE2	2.48	0.47
3:T:2177:LYS:HG3	3:T:2179:TRP:HB2	1.97	0.47
3:T:355:LEU:HD21	3:T:364:LEU:HD23	1.97	0.47
3:T:588:ARG:HG3	3:T:685:TYR:HE2	1.80	0.47
3:T:1234:GLN:NE2	3:T:1271:THR:OG1	2.48	0.47
3:T:1409:VAL:HG22	3:T:1455:ILE:HD11	1.96	0.47
3:T:1911:TYR:HE1	3:T:1948:VAL:HG21	1.79	0.47

Continued on next page...

Continued from previous page...

Atom-1	Atom-2	Interatomic distance (Å)	Clash overlap (Å)
3:T:2217:ILE:HD11	3:T:2266:ASN:HD22	1.80	0.47
3:T:2476:LEU:O	3:T:2479:SER:OG	2.32	0.47
3:T:2750:ALA:HB2	3:T:2757:ASP:HB3	1.97	0.47
3:T:3449:ILE:HG23	3:T:3457:ILE:HG13	1.97	0.47
3:T:843:ASN:HD21	3:T:859:VAL:HG12	1.80	0.46
3:T:130:LYS:NZ	3:T:224:LEU:O	2.43	0.46
3:T:1098:ASP:N	3:T:1098:ASP:OD1	2.47	0.46
3:T:1217:LYS:HB3	3:T:1263:LEU:HD11	1.97	0.46
3:T:1382:ILE:HD12	3:T:1415:CYS:HB2	1.97	0.46
3:T:1844:ASN:HD22	3:T:1889:PHE:HA	1.80	0.46
3:T:2169:TYR:HA	3:T:2172:PHE:HB3	1.98	0.46
3:T:740:LEU:HD21	3:T:765:LEU:HD12	1.98	0.46
2:I:394:SER:O	2:I:394:SER:OG	2.31	0.46
3:T:1811:LEU:HD23	3:T:1811:LEU:HA	1.83	0.46
3:T:3023:PHE:HA	3:T:3026:LYS:HD2	1.98	0.46
3:T:2680:ARG:NH2	3:T:2696:GLN:OE1	2.43	0.46
3:T:249:PHE:O	3:T:288:ARG:NH1	2.49	0.45
3:T:76:ARG:HH22	3:T:116:ILE:H	1.63	0.45
3:T:2518:GLU:HA	3:T:2521:ASN:HD21	1.82	0.45
3:T:1774:SER:OG	3:T:1777:GLU:OE2	2.33	0.45
3:T:3050:ASP:OD1	3:T:3050:ASP:N	2.48	0.45
3:T:80:LEU:O	3:T:84:ASN:ND2	2.50	0.45
3:T:1278:GLU:HG2	3:T:1320:ILE:HG12	1.99	0.45
3:T:110:GLU:O	3:T:215:ARG:NH2	2.43	0.45
3:T:3685:ASN:ND2	3:T:3687:GLN:OE1	2.49	0.45
3:T:62:VAL:HG23	3:T:72:GLU:HG3	1.98	0.45
3:T:479:ASN:ND2	3:T:640:GLU:OE1	2.45	0.45
3:T:1379:GLN:HA	3:T:1382:ILE:HG22	1.99	0.45
3:T:1396:ILE:HD12	3:T:1398:LYS:HG2	1.98	0.45
3:T:285:ILE:HG23	3:T:288:ARG:HH21	1.82	0.45
3:T:460:ALA:O	3:T:463:LEU:HB2	2.17	0.45
3:T:2854:GLU:OE1	3:T:2884:TRP:NE1	2.49	0.45
3:T:3566:ASN:OD1	3:T:3566:ASN:N	2.50	0.45
3:T:346:GLU:HA	3:T:349:HIS:HB2	1.98	0.44
3:T:478:LEU:HD22	3:T:586:LEU:HD23	1.99	0.44
3:T:1825:LEU:HD12	3:T:1828:ASP:HA	2.00	0.44
3:T:2425:ARG:HD3	3:T:2463:ILE:HD12	1.98	0.44
3:T:485:ILE:HG23	3:T:579:PRO:HB2	1.99	0.44
3:T:3245:LEU:HD22	3:T:3292:ILE:HD12	1.98	0.44
3:T:44:TYR:O	3:T:48:LEU:N	2.48	0.44
3:T:467:ILE:O	3:T:470:SER:OG	2.27	0.44

Continued on next page...

Continued from previous page...

Atom-1	Atom-2	Interatomic distance (Å)	Clash overlap (Å)
3:T:1844:ASN:N	3:T:1844:ASN:OD1	2.50	0.44
3:T:2785:ASP:OD1	3:T:2785:ASP:N	2.51	0.44
3:T:483:ASP:OD1	3:T:483:ASP:N	2.51	0.44
3:T:1102:LEU:HD12	3:T:2533:LEU:HD21	2.00	0.44
3:T:2249:GLU:HG2	3:T:2251:SER:H	1.81	0.44
3:T:3275:ASN:HA	3:T:3278:LYS:HG2	1.99	0.44
3:T:222:LYS:HD3	3:T:234:LEU:HD22	1.99	0.44
3:T:1116:ASN:ND2	3:T:2501:GLN:OE1	2.50	0.44
3:T:744:LEU:HD11	3:T:765:LEU:HB3	2.00	0.44
3:T:2031:LEU:O	3:T:2034:LEU:HB3	2.18	0.44
3:T:2287:LYS:HB2	3:T:2287:LYS:HE3	1.81	0.44
3:T:2593:THR:HA	3:T:2596:ILE:HG13	2.00	0.44
3:T:1844:ASN:HA	3:T:1848:ILE:HG13	1.99	0.44
3:T:106:VAL:HG13	3:T:109:LYS:HE3	2.00	0.43
3:T:466:ILE:O	3:T:469:ASP:HB3	2.16	0.43
3:T:2275:LEU:HA	3:T:2278:LEU:HD13	2.00	0.43
3:T:3068:LEU:HD21	3:T:3073:ASN:HB3	2.00	0.43
3:T:3593:TYR:HB2	3:T:3596:VAL:HG12	2.00	0.43
3:T:1038:ASN:OD1	3:T:1038:ASN:N	2.51	0.43
3:T:1137:ASN:OD1	3:T:1137:ASN:N	2.50	0.43
3:T:973:ASP:OD1	3:T:2558:ARG:NH2	2.48	0.43
3:T:2783:VAL:HG13	3:T:2791:ARG:HD2	2.00	0.43
3:T:217:SER:O	3:T:217:SER:OG	2.36	0.43
3:T:1342:LEU:HD22	3:T:1374:LEU:HD11	2.00	0.43
3:T:2294:GLN:HG2	3:T:2295:PRO:HD3	1.99	0.43
3:T:1327:ASP:OD1	3:T:1327:ASP:N	2.47	0.43
3:T:2772:ASP:OD1	3:T:2772:ASP:N	2.52	0.43
3:T:2913:ASN:HD21	3:T:2941:HIS:HA	1.84	0.43
3:T:1655:ILE:HG12	3:T:1662:VAL:HG23	2.00	0.43
3:T:2781:LYS:HA	3:T:2781:LYS:HD3	1.87	0.43
3:T:1829:LYS:HA	3:T:1829:LYS:HD3	1.79	0.43
3:T:2540:ASP:OD1	3:T:2540:ASP:N	2.52	0.43
2:I:359:GLU:OE2	3:T:2879:ARG:NH2	2.50	0.43
3:T:2123:ILE:O	3:T:2127:LEU:HB2	2.19	0.43
3:T:2184:LEU:O	3:T:2188:GLN:HB2	2.19	0.43
3:T:3685:ASN:OD1	3:T:3685:ASN:N	2.51	0.43
3:T:850:ARG:HB3	3:T:852:PRO:HD3	1.99	0.43
3:T:1282:ASN:OD1	3:T:1282:ASN:N	2.48	0.43
3:T:1911:TYR:HD1	3:T:1948:VAL:HG11	1.83	0.43
3:T:2412:ILE:HD12	3:T:2412:ILE:HA	1.84	0.43
3:T:3262:ARG:NH2	3:T:3737:ASP:OD1	2.52	0.43

Continued on next page...

Continued from previous page...

Atom-1	Atom-2	Interatomic distance (Å)	Clash overlap (Å)
3:T:3278:LYS:HA	3:T:3281:VAL:HG12	2.01	0.43
3:T:3304:LYS:HE2	3:T:3313:ARG:HG3	2.00	0.43
3:T:1942:VAL:HG21	3:T:1985:LEU:HD21	2.01	0.43
3:T:2377:THR:OG1	3:T:2415:ARG:NH2	2.52	0.43
3:T:1970:VAL:O	3:T:1974:MET:HB2	2.18	0.42
3:T:3567:ARG:NH2	3:T:3585:GLU:O	2.50	0.42
3:T:1081:ARG:HA	3:T:1081:ARG:HD3	1.90	0.42
3:T:984:GLY:HA3	3:T:2447:ILE:HG22	2.01	0.42
3:T:1234:GLN:HG3	3:T:1271:THR:HG21	2.02	0.42
3:T:1327:ASP:OD1	3:T:1328:HIS:ND1	2.53	0.42
3:T:2304:ALA:HA	3:T:2307:THR:HG22	2.02	0.42
3:T:3295:LYS:HA	3:T:3295:LYS:HD2	1.89	0.42
3:T:928:LEU:HD22	3:T:945:VAL:HG13	2.00	0.42
3:T:1072:TYR:HD1	3:T:2492:TYR:HE1	1.66	0.42
3:T:1109:HIS:HD2	3:T:2526:HIS:HE1	1.67	0.42
3:T:1444:PHE:HB3	3:T:1463:LEU:HD21	2.01	0.42
3:T:1509:LEU:O	3:T:1513:TYR:OH	2.26	0.42
3:T:1686:LYS:HA	3:T:1686:LYS:HD3	1.82	0.42
3:T:1804:LYS:HG3	3:T:1863:GLU:HB2	2.00	0.42
3:T:785:LEU:HB2	3:T:827:LEU:HD21	2.00	0.42
3:T:1054:ARG:HA	3:T:1054:ARG:HD2	1.85	0.42
3:T:1704:LYS:HA	3:T:1704:LYS:HD2	1.88	0.42
3:T:2028:ALA:O	3:T:2031:LEU:HB2	2.19	0.42
3:T:944:ASN:OD1	3:T:947:ARG:NH2	2.52	0.42
3:T:1423:LEU:HD22	3:T:1440:ILE:HD11	2.02	0.42
3:T:2608:ASP:OD1	3:T:2612:LYS:NZ	2.53	0.42
3:T:2756:THR:HG21	3:T:2783:VAL:HG21	2.02	0.42
3:T:3172:ARG:HH22	3:T:3215:LEU:HD23	1.84	0.42
3:T:961:LYS:HB2	3:T:961:LYS:HE3	1.79	0.42
3:T:1840:LYS:HZ3	3:T:1848:ILE:HD11	1.85	0.42
3:T:3463:SER:HA	3:T:3576:LYS:HE2	2.02	0.42
3:T:3472:ASN:ND2	3:T:3482:PRO:HG3	2.34	0.42
3:T:118:CYS:SG	3:T:119:MET:N	2.92	0.42
3:T:150:ASN:HA	3:T:153:ASN:HD22	1.85	0.42
3:T:1520:ARG:HH12	3:T:1568:MET:HG3	1.85	0.42
3:T:2376:LEU:HG	3:T:2394:PHE:HE1	1.85	0.42
3:T:80:LEU:HD11	3:T:120:LYS:HB2	2.01	0.41
3:T:1437:ARG:HH11	3:T:1441:LEU:HD11	1.84	0.41
3:T:1861:ARG:HB3	3:T:1893:PHE:HE1	1.84	0.41
3:T:3064:ASN:HD21	3:T:3080:ASN:HD22	1.68	0.41
1:B:397:MET:HB2	3:T:2622:LEU:HB3	2.02	0.41

Continued on next page...

Continued from previous page...

Atom-1	Atom-2	Interatomic distance (Å)	Clash overlap (Å)
3:T:632:ILE:HD13	3:T:632:ILE:HA	1.92	0.41
3:T:2644:GLN:HE22	3:T:2659:GLU:HG2	1.86	0.41
3:T:3173:THR:HA	3:T:3453:PRO:HD3	2.02	0.41
3:T:299:ILE:HD13	3:T:299:ILE:HA	1.89	0.41
3:T:1712:TYR:HB3	3:T:1715:HIS:NE2	2.35	0.41
3:T:1867:LEU:HA	3:T:1870:ILE:HD12	2.02	0.41
3:T:132:ILE:O	3:T:134:GLN:NE2	2.53	0.41
3:T:402:ILE:HG13	3:T:403:ARG:H	1.85	0.41
3:T:993:VAL:HG11	3:T:1027:LEU:HD12	2.02	0.41
3:T:2743:TRP:O	3:T:2747:THR:OG1	2.33	0.41
3:T:677:LYS:HE3	3:T:677:LYS:HB2	1.90	0.41
3:T:2350:ARG:HA	3:T:2353:VAL:HG22	2.01	0.41
3:T:2806:SER:O	3:T:2806:SER:OG	2.35	0.41
3:T:327:ASP:OD2	3:T:327:ASP:N	2.50	0.41
3:T:1027:LEU:HD23	3:T:1027:LEU:HA	1.84	0.41
3:T:1224:LYS:HE3	3:T:1224:LYS:HB2	1.87	0.41
3:T:1596:LEU:HD12	3:T:1596:LEU:HA	1.88	0.41
3:T:1683:GLU:O	3:T:1686:LYS:NZ	2.35	0.41
3:T:1743:LEU:HD22	3:T:1765:PHE:HE2	1.85	0.41
3:T:2316:TYR:O	3:T:2320:LEU:CB	2.68	0.41
3:T:2450:ARG:HD2	3:T:2479:SER:HB3	2.02	0.41
3:T:1328:HIS:O	3:T:1331:GLN:NE2	2.54	0.41
3:T:2568:TYR:CZ	3:T:2616:LEU:HD23	2.56	0.41
2:I:404:LEU:HA	2:I:405:PRO:HD3	1.97	0.41
3:T:510:ASN:HD21	3:T:2210:LEU:HD13	1.86	0.41
3:T:712:ARG:HA	3:T:712:ARG:HD3	1.86	0.41
3:T:2206:LEU:HA	3:T:2206:LEU:HD23	1.93	0.41
3:T:3375:LEU:HD21	3:T:3394:ARG:HB2	2.03	0.41
1:B:402:THR:HG22	1:B:403:THR:HG22	2.03	0.40
3:T:478:LEU:HD12	3:T:478:LEU:HA	1.90	0.40
3:T:1618:ARG:NH1	3:T:1668:ASN:OD1	2.47	0.40
3:T:1834:LEU:O	3:T:1838:HIS:ND1	2.43	0.40
3:T:2011:MET:HB3	3:T:2031:LEU:HD12	2.03	0.40
3:T:2375:ILE:HD12	3:T:2375:ILE:HA	1.91	0.40
3:T:1060:ASN:HD21	3:T:1134:LYS:HB2	1.86	0.40
3:T:615:ASN:OD1	3:T:615:ASN:N	2.53	0.40
3:T:978:ALA:HB2	3:T:2488:LEU:HD23	2.03	0.40
3:T:1389:ASP:OD1	3:T:1389:ASP:N	2.51	0.40
3:T:2421:LEU:HD12	3:T:2462:PHE:HD2	1.87	0.40
3:T:2902:VAL:HG21	3:T:2950:PHE:HB2	2.04	0.40
3:T:3599:LEU:HD23	3:T:3599:LEU:HA	1.95	0.40

Continued on next page...

Continued from previous page...

Atom-1	Atom-2	Interatomic distance (Å)	Clash overlap (Å)
3:T:1703:LEU:HD23	3:T:1703:LEU:HA	1.93	0.40
3:T:1742:PRO:HA	3:T:1745:LEU:HB2	2.03	0.40
3:T:3240:THR:OG1	3:T:3241:THR:N	2.55	0.40

There are no symmetry-related clashes.

5.3 Torsion angles [i](#)

5.3.1 Protein backbone [i](#)

In the following table, the Percentiles column shows the percent Ramachandran outliers of the chain as a percentile score with respect to all PDB entries followed by that with respect to all EM entries.

The Analysed column shows the number of residues for which the backbone conformation was analysed, and the total number of residues.

Mol	Chain	Analysed	Favoured	Allowed	Outliers	Percentiles	
1	B	39/604 (6%)	39 (100%)	0	0	100	100
2	I	59/539 (11%)	55 (93%)	4 (7%)	0	100	100
3	T	3489/3744 (93%)	3205 (92%)	283 (8%)	1 (0%)	100	100
All	All	3587/4887 (73%)	3299 (92%)	287 (8%)	1 (0%)	100	100

All (1) Ramachandran outliers are listed below:

Mol	Chain	Res	Type
3	T	851	LEU

5.3.2 Protein sidechains [i](#)

In the following table, the Percentiles column shows the percent sidechain outliers of the chain as a percentile score with respect to all PDB entries followed by that with respect to all EM entries.

The Analysed column shows the number of residues for which the sidechain conformation was analysed, and the total number of residues.

Mol	Chain	Analysed	Rotameric	Outliers	Percentiles	
1	B	42/536 (8%)	41 (98%)	1 (2%)	49	74

Continued on next page...

Continued from previous page...

Mol	Chain	Analysed	Rotameric	Outliers	Percentiles	
2	I	51/483 (11%)	49 (96%)	2 (4%)	32	61
3	T	3238/3452 (94%)	3209 (99%)	29 (1%)	78	90
All	All	3331/4471 (74%)	3299 (99%)	32 (1%)	77	88

All (32) residues with a non-rotameric sidechain are listed below:

Mol	Chain	Res	Type
1	B	397	MET
2	I	382	ARG
2	I	389	SER
3	T	13	ARG
3	T	15	ARG
3	T	16	ASP
3	T	119	MET
3	T	291	TYR
3	T	295	ILE
3	T	296	LEU
3	T	300	LYS
3	T	311	ARG
3	T	576	THR
3	T	855	ARG
3	T	907	ASN
3	T	908	LEU
3	T	909	THR
3	T	964	THR
3	T	1021	LEU
3	T	1585	ARG
3	T	1775	ASN
3	T	1804	LYS
3	T	1830	LYS
3	T	1849	LEU
3	T	1851	TYR
3	T	1852	ASP
3	T	1853	VAL
3	T	2181	MET
3	T	2272	VAL
3	T	2276	THR
3	T	3307	TYR
3	T	3595	ARG

Sometimes sidechains can be flipped to improve hydrogen bonding and reduce clashes. All (59) such sidechains are listed below:

Mol	Chain	Res	Type
3	T	77	ASN
3	T	84	ASN
3	T	93	GLN
3	T	134	GLN
3	T	150	ASN
3	T	153	ASN
3	T	400	HIS
3	T	441	ASN
3	T	510	ASN
3	T	565	ASN
3	T	639	HIS
3	T	794	ASN
3	T	840	GLN
3	T	843	ASN
3	T	896	GLN
3	T	1105	ASN
3	T	1109	HIS
3	T	1234	GLN
3	T	1298	ASN
3	T	1479	GLN
3	T	1587	GLN
3	T	1619	GLN
3	T	1626	ASN
3	T	1629	GLN
3	T	1654	ASN
3	T	1659	GLN
3	T	1719	ASN
3	T	1781	ASN
3	T	1856	HIS
3	T	1857	HIS
3	T	1892	ASN
3	T	1968	ASN
3	T	2203	GLN
3	T	2266	ASN
3	T	2289	HIS
3	T	2354	ASN
3	T	2441	ASN
3	T	2470	ASN
3	T	2521	ASN
3	T	2668	ASN
3	T	2770	ASN
3	T	2792	GLN
3	T	2802	ASN

Continued on next page...

Continued from previous page...

Mol	Chain	Res	Type
3	T	2822	GLN
3	T	2906	GLN
3	T	2910	GLN
3	T	2952	HIS
3	T	3040	ASN
3	T	3064	ASN
3	T	3250	ASN
3	T	3259	ASN
3	T	3261	ASN
3	T	3340	HIS
3	T	3357	GLN
3	T	3421	GLN
3	T	3442	GLN
3	T	3472	ASN
3	T	3486	GLN
3	T	3537	GLN

5.3.3 RNA [i](#)

There are no RNA molecules in this entry.

5.4 Non-standard residues in protein, DNA, RNA chains [i](#)

There are no non-standard protein/DNA/RNA residues in this entry.

5.5 Carbohydrates [i](#)

There are no monosaccharides in this entry.

5.6 Ligand geometry [i](#)

There are no ligands in this entry.

5.7 Other polymers [i](#)

There are no such residues in this entry.

5.8 Polymer linkage issues

There are no chain breaks in this entry.

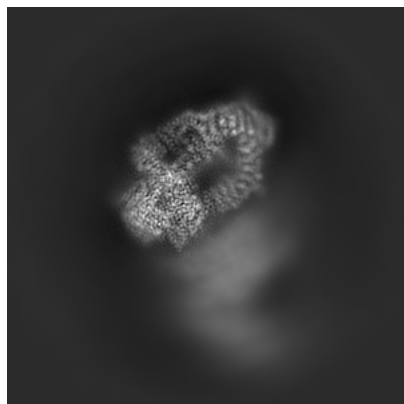
6 Map visualisation [i](#)

This section contains visualisations of the EMDB entry EMD-10413. These allow visual inspection of the internal detail of the map and identification of artifacts.

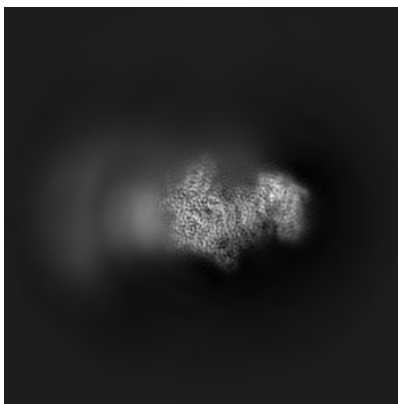
Images derived from a raw map, generated by summing the deposited half-maps, are presented below the corresponding image components of the primary map to allow further visual inspection and comparison with those of the primary map.

6.1 Orthogonal projections [i](#)

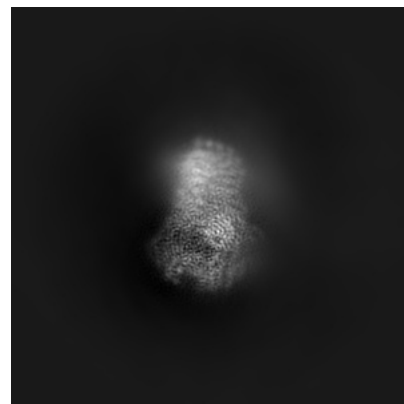
6.1.1 Primary map



X

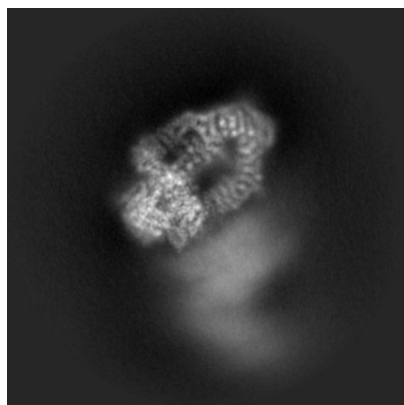


Y

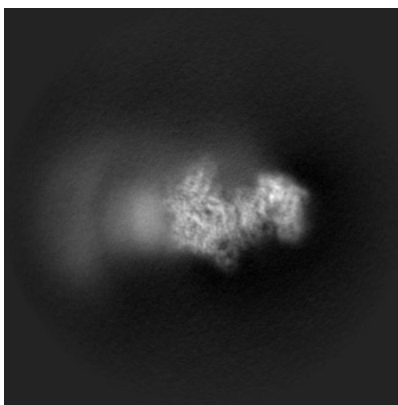


Z

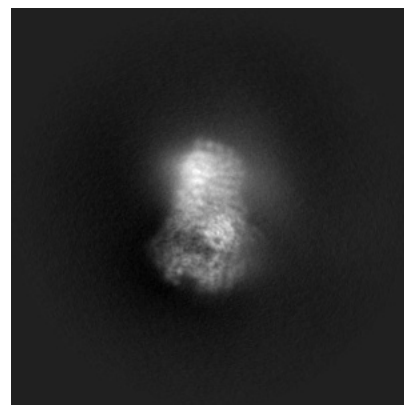
6.1.2 Raw map



X



Y

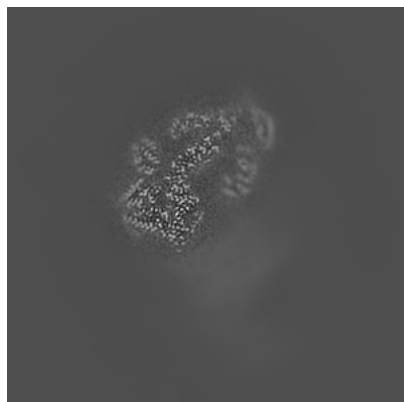


Z

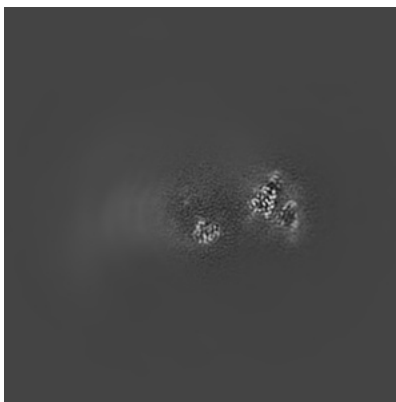
The images above show the map projected in three orthogonal directions.

6.2 Central slices [i](#)

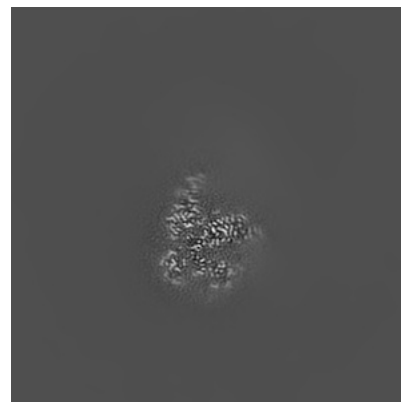
6.2.1 Primary map



X Index: 200

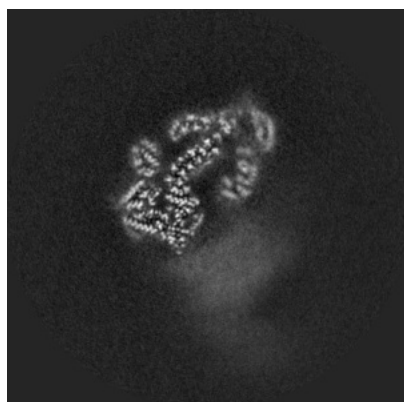


Y Index: 200

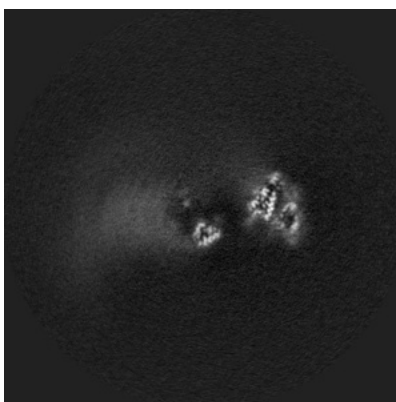


Z Index: 200

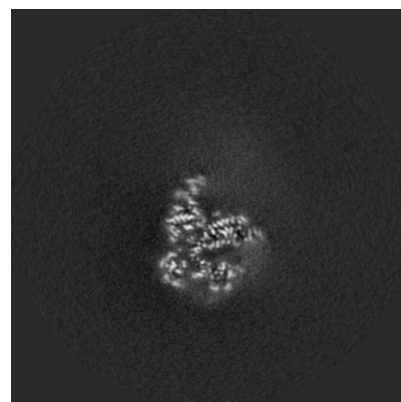
6.2.2 Raw map



X Index: 200



Y Index: 200

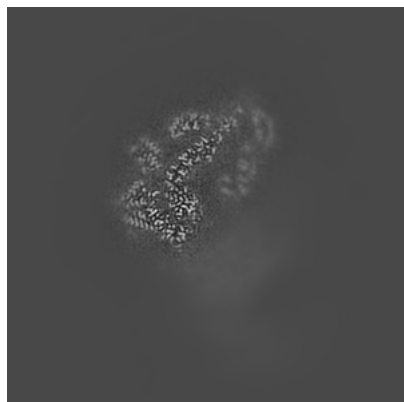


Z Index: 200

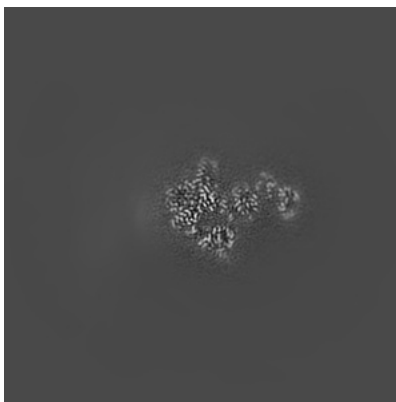
The images above show central slices of the map in three orthogonal directions.

6.3 Largest variance slices [i](#)

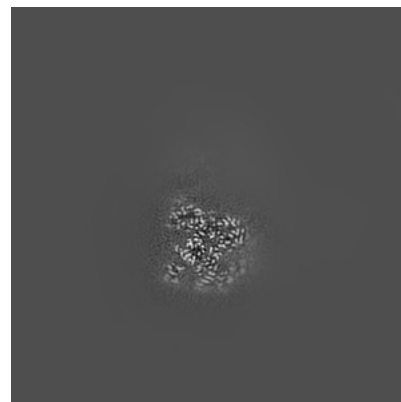
6.3.1 Primary map



X Index: 202

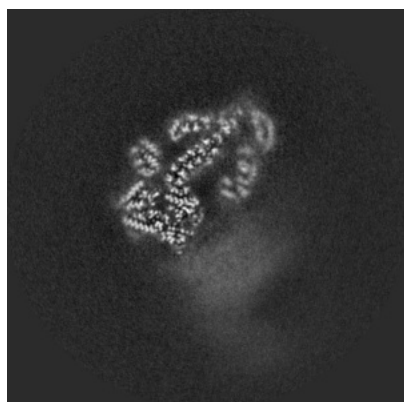


Y Index: 177

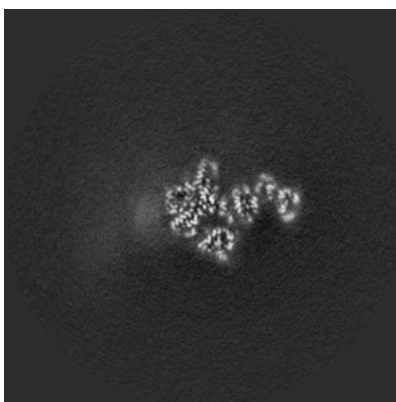


Z Index: 193

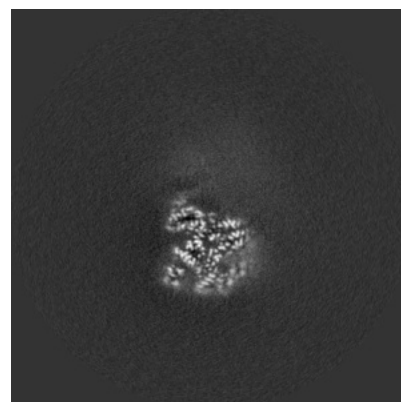
6.3.2 Raw map



X Index: 201



Y Index: 177

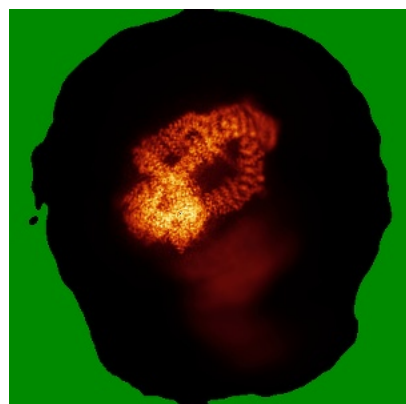


Z Index: 193

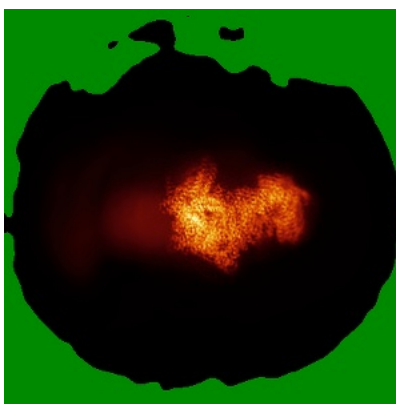
The images above show the largest variance slices of the map in three orthogonal directions.

6.4 Orthogonal standard-deviation projections (False-color) [i](#)

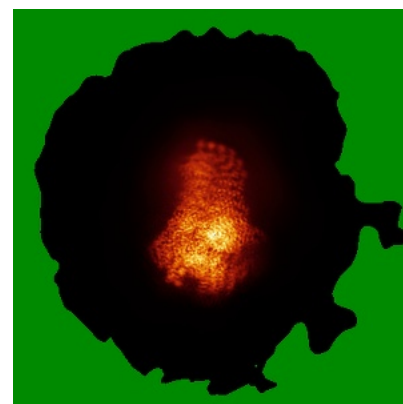
6.4.1 Primary map



X

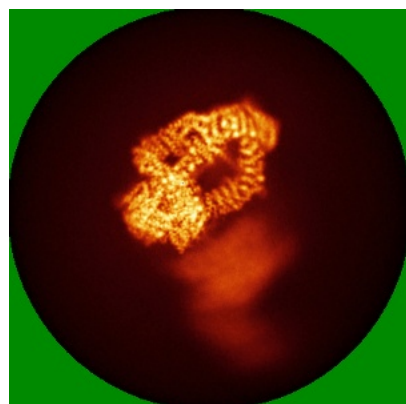


Y

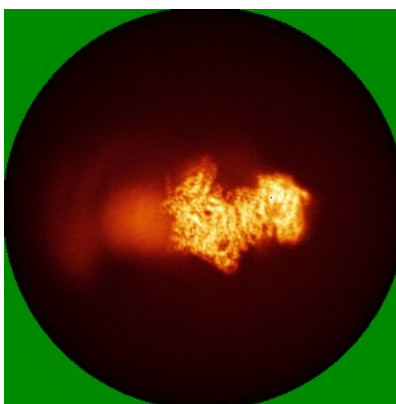


Z

6.4.2 Raw map



X



Y



Z

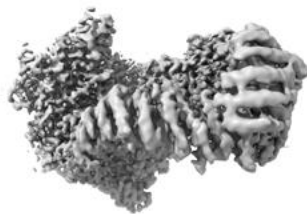
The images above show the map standard deviation projections with false color in three orthogonal directions. Minimum values are shown in green, max in blue, and dark to light orange shades represent small to large values respectively.

6.5 Orthogonal surface views [i](#)

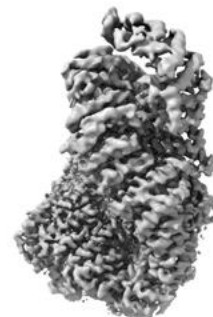
6.5.1 Primary map



X



Y



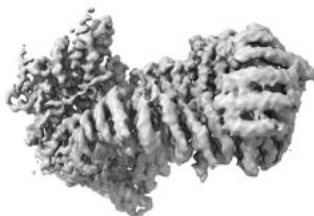
Z

The images above show the 3D surface view of the map at the recommended contour level 0.07. These images, in conjunction with the slice images, may facilitate assessment of whether an appropriate contour level has been provided.

6.5.2 Raw map



X



Y



Z

These images show the 3D surface of the raw map. The raw map's contour level was selected so that its surface encloses the same volume as the primary map does at its recommended contour level.

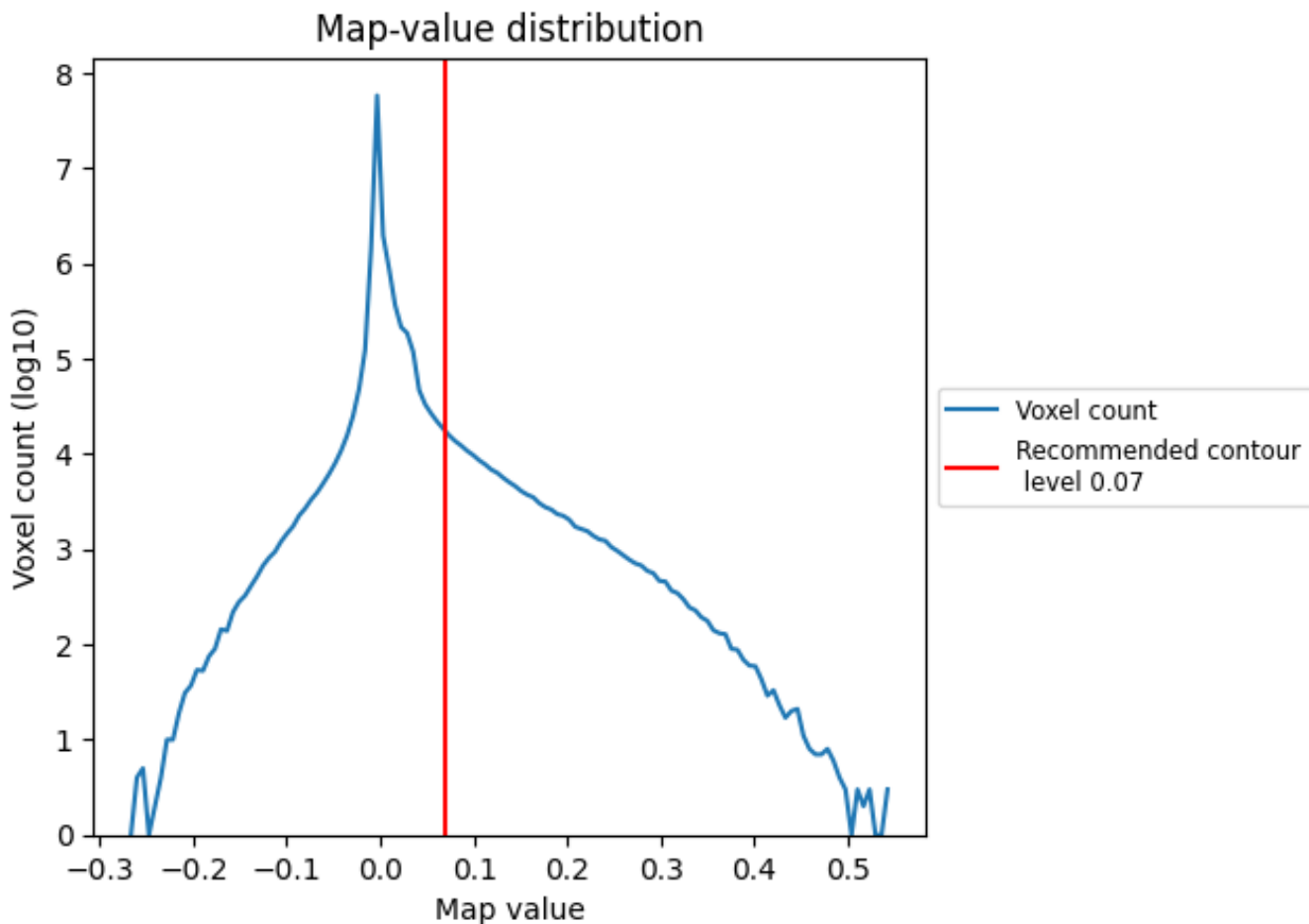
6.6 Mask visualisation [i](#)

This section was not generated. No masks/segmentation were deposited.

7 Map analysis [i](#)

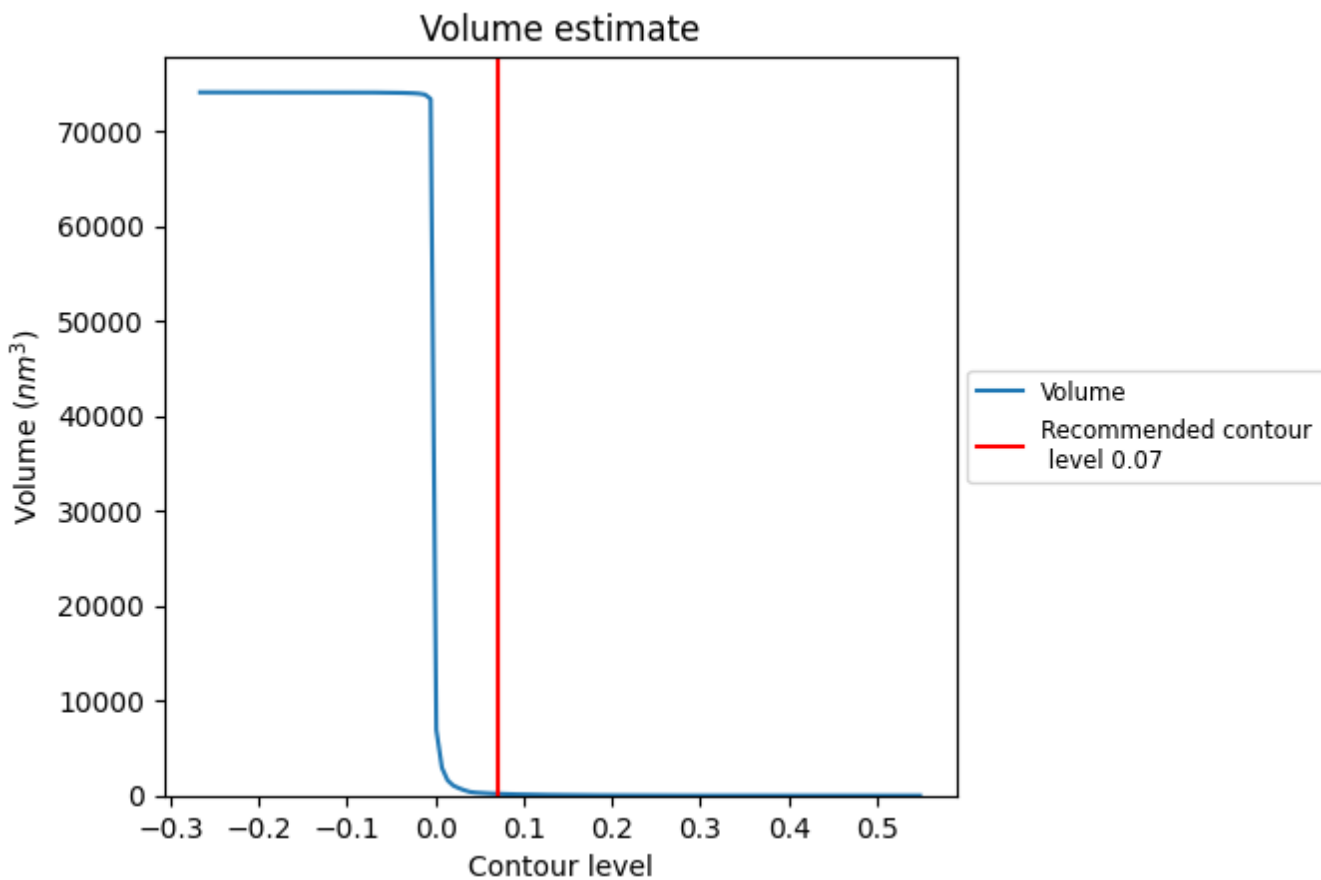
This section contains the results of statistical analysis of the map.

7.1 Map-value distribution [i](#)



The map-value distribution is plotted in 128 intervals along the x-axis. The y-axis is logarithmic. A spike in this graph at zero usually indicates that the volume has been masked.

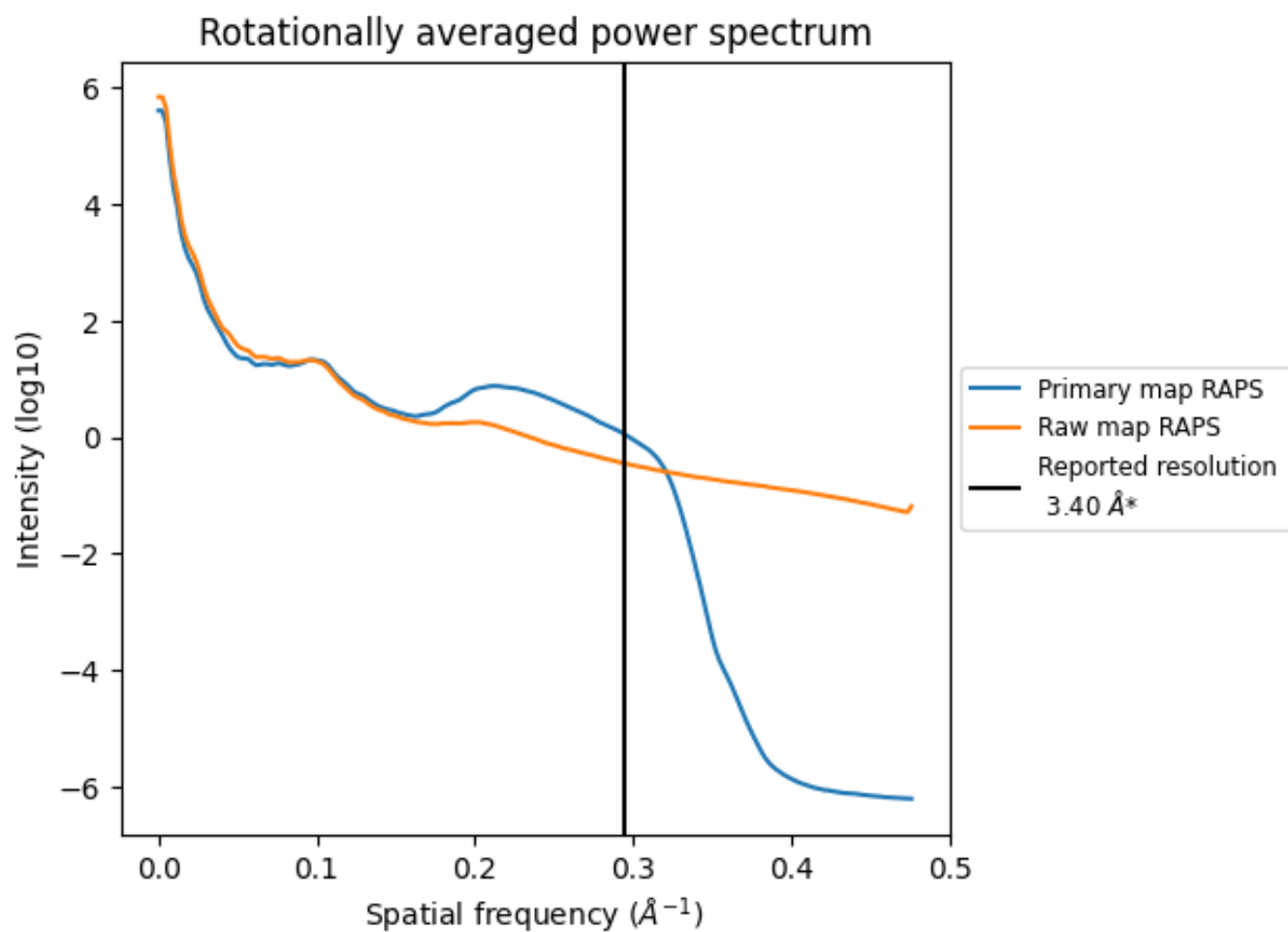
7.2 Volume estimate [i](#)



The volume at the recommended contour level is 189 nm^3 ; this corresponds to an approximate mass of 170 kDa.

The volume estimate graph shows how the enclosed volume varies with the contour level. The recommended contour level is shown as a vertical line and the intersection between the line and the curve gives the volume of the enclosed surface at the given level.

7.3 Rotationally averaged power spectrum i

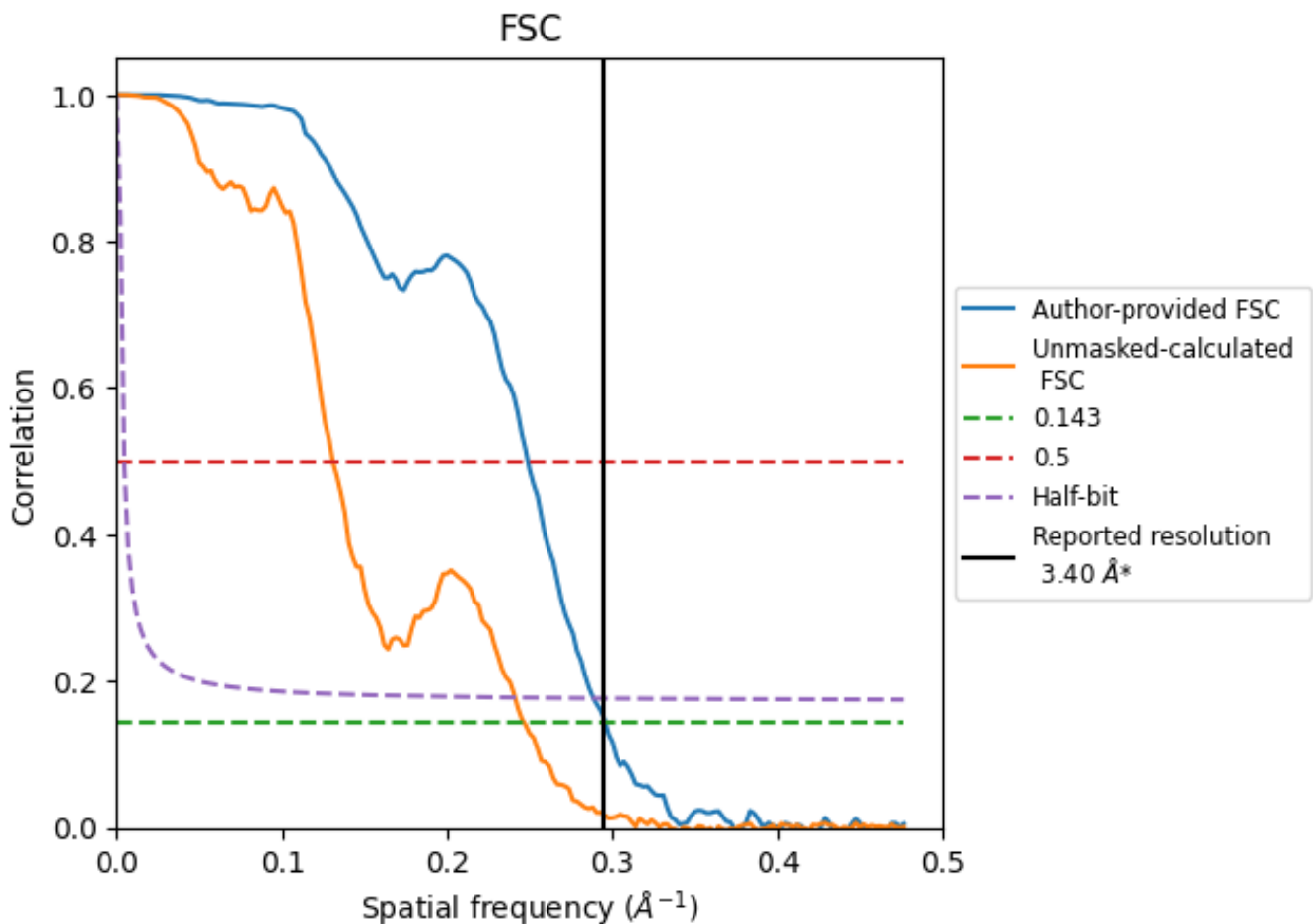


*Reported resolution corresponds to spatial frequency of 0.294 \AA^{-1}

8 Fourier-Shell correlation [i](#)

Fourier-Shell Correlation (FSC) is the most commonly used method to estimate the resolution of single-particle and subtomogram-averaged maps. The shape of the curve depends on the imposed symmetry, mask and whether or not the two 3D reconstructions used were processed from a common reference. The reported resolution is shown as a black line. A curve is displayed for the half-bit criterion in addition to lines showing the 0.143 gold standard cut-off and 0.5 cut-off.

8.1 FSC [i](#)



*Reported resolution corresponds to spatial frequency of 0.294 Å⁻¹

8.2 Resolution estimates [i](#)

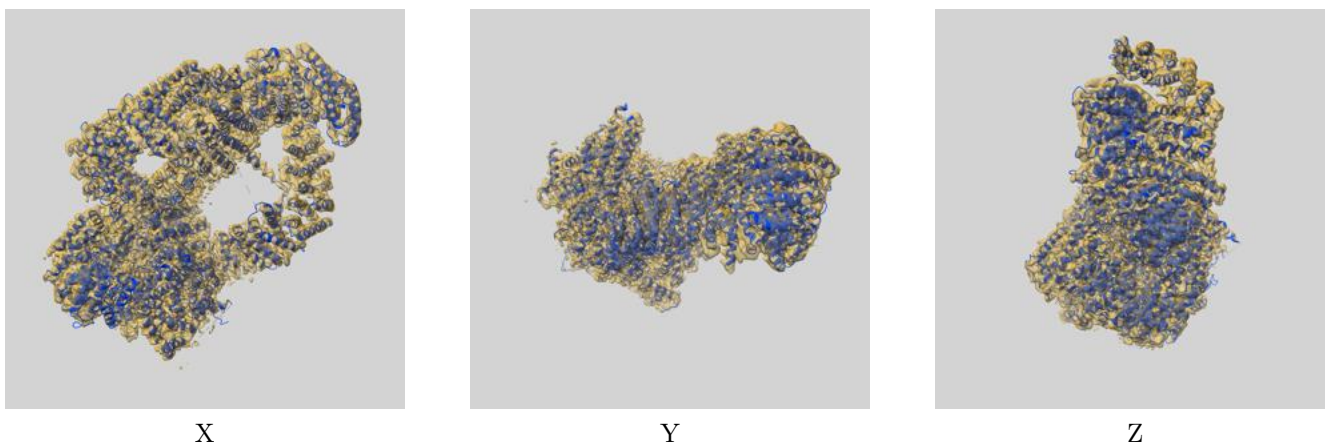
Resolution estimate (Å)	Estimation criterion (FSC cut-off)		
	0.143	0.5	Half-bit
Reported by author	3.40	-	-
Author-provided FSC curve	3.38	4.02	3.47
Unmasked-calculated*	4.05	7.65	4.15

*Resolution estimate based on FSC curve calculated by comparison of deposited half-maps. The value from deposited half-maps intersecting FSC 0.143 CUT-OFF 4.05 differs from the reported value 3.4 by more than 10 %

9 Map-model fit [i](#)

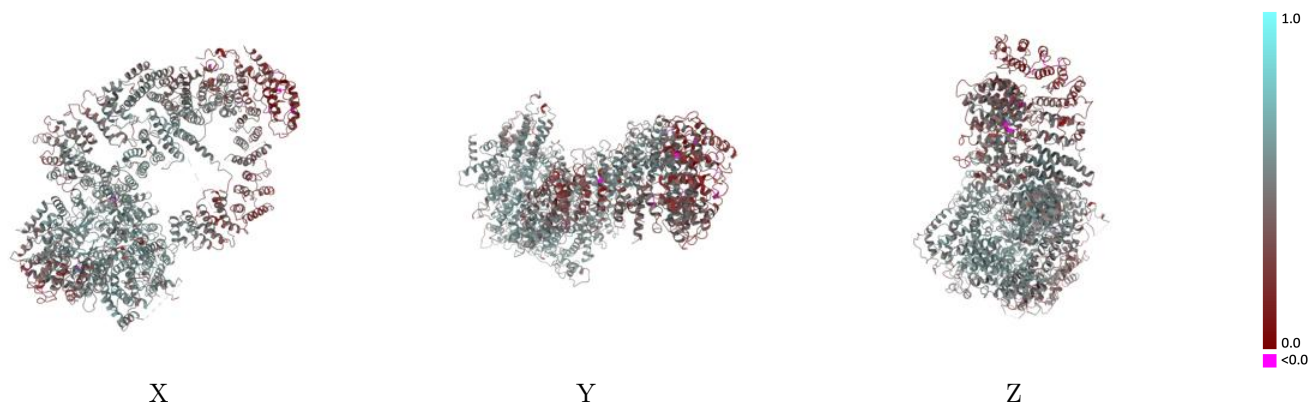
This section contains information regarding the fit between EMDB map EMD-10413 and PDB model 6T9J. Per-residue inclusion information can be found in section 3 on page 4.

9.1 Map-model overlay [i](#)



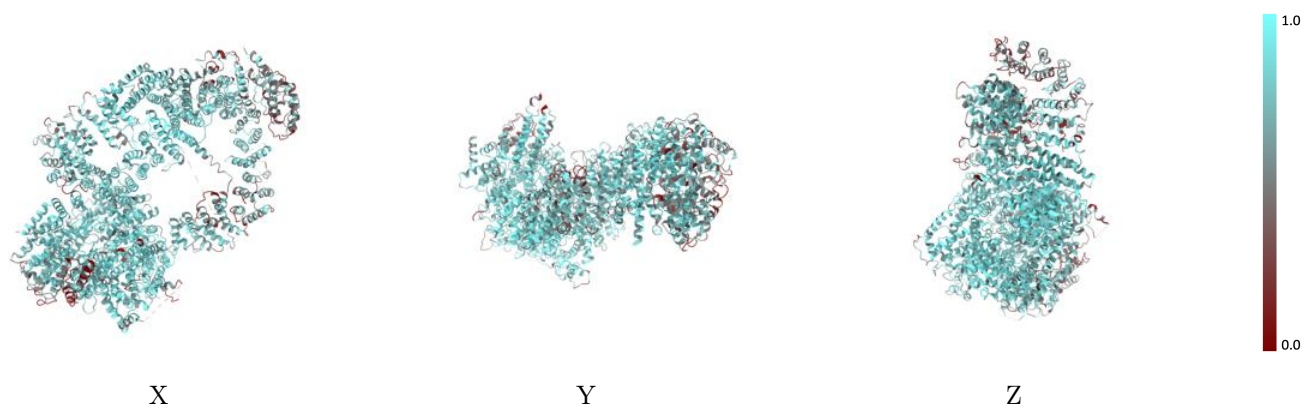
The images above show the 3D surface view of the map at the recommended contour level 0.07 at 50% transparency in yellow overlaid with a ribbon representation of the model coloured in blue. These images allow for the visual assessment of the quality of fit between the atomic model and the map.

9.2 Q-score mapped to coordinate model [i](#)



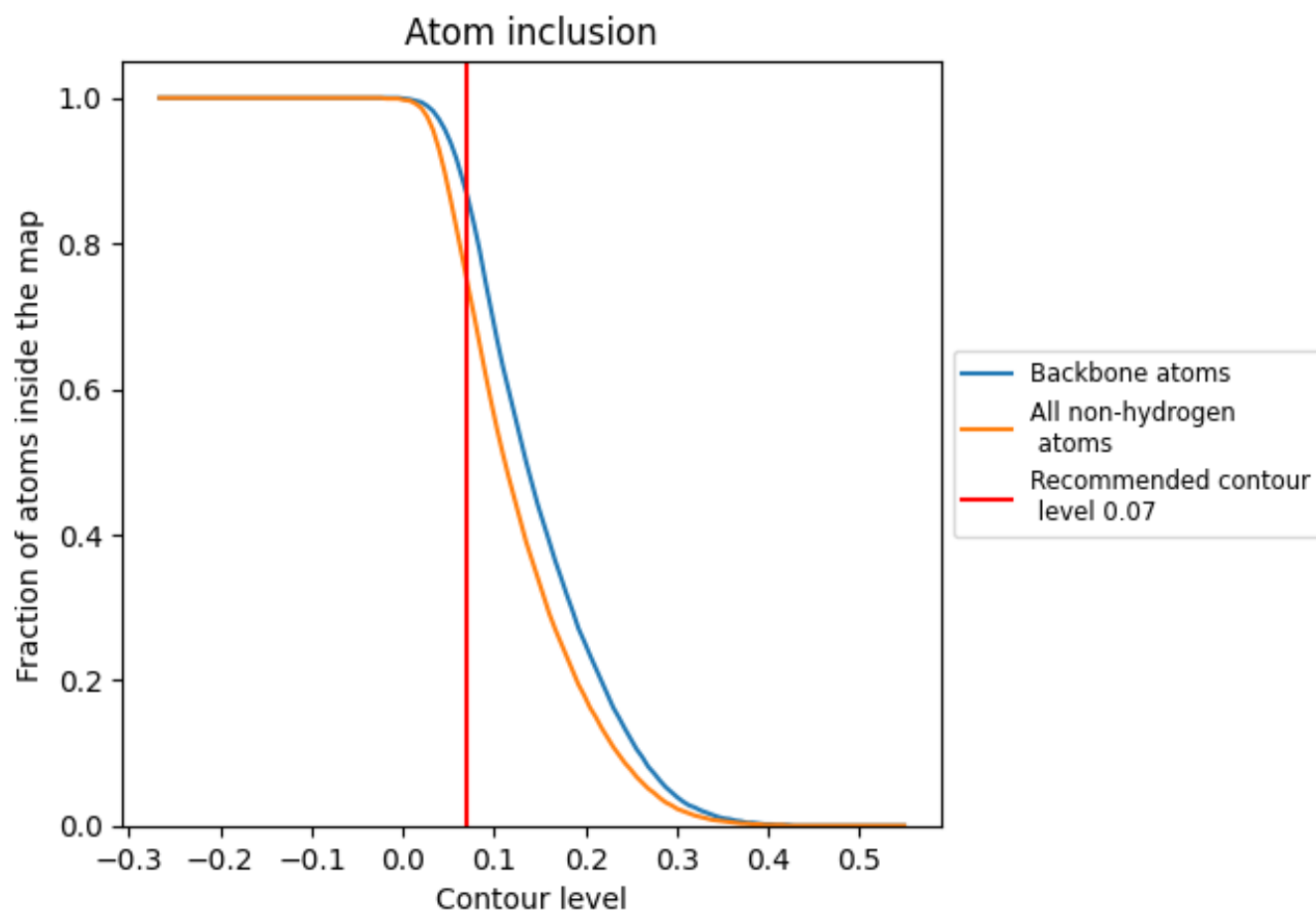
The images above show the model with each residue coloured according to its Q-score. This shows their resolvability in the map with higher Q-score values reflecting better resolvability. Please note: Q-score is calculating the resolvability of atoms, and thus high values are only expected at resolutions at which atoms can be resolved. Low Q-score values may therefore be expected for many entries.

9.3 Atom inclusion mapped to coordinate model [i](#)



The images above show the model with each residue coloured according to its atom inclusion. This shows to what extent they are inside the map at the recommended contour level (0.07).









9.4 Atom inclusion [i](#)



At the recommended contour level, 87% of all backbone atoms, 75% of all non-hydrogen atoms, are inside the map.

9.5 Map-model fit summary

The table lists the average atom inclusion at the recommended contour level (0.07) and Q-score for the entire model and for each chain.

Chain	Atom inclusion	Q-score
All	 0.7480	 0.4580
B	 0.6890	 0.5110
I	 0.7460	 0.5130
T	 0.7490	 0.4560

