



wwPDB X-ray Structure Validation Summary Report ⓘ

Aug 7, 2020 – 03:58 PM BST

PDB ID : 6RUE
Title : Wolinella succinogenes L-asparaginase mutant V23Q,K24T with L-Asp
Authors : Timofeev, V.I.; Kuranova, I.P.
Deposited on : 2019-05-28
Resolution : 1.65 Å(reported)

This is a wwPDB X-ray Structure Validation Summary Report for a publicly released PDB entry.

We welcome your comments at validation@mail.wwpdb.org

A user guide is available at

<https://www.wwpdb.org/validation/2017/XrayValidationReportHelp>

with specific help available everywhere you see the ⓘ symbol.

The following versions of software and data (see [references ⓘ](#)) were used in the production of this report:

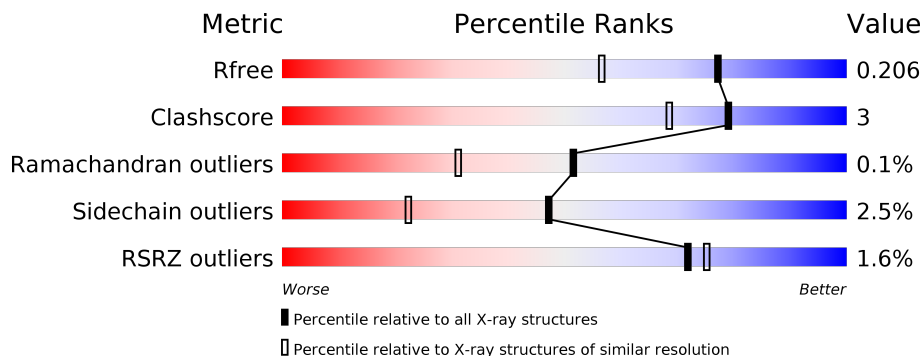
MolProbity : 4.02b-467
Xtriage (Phenix) : 1.13
EDS : 2.13.1
Percentile statistics : 20191225.v01 (using entries in the PDB archive December 25th 2019)
Refmac : 5.8.0158
CCP4 : 7.0.044 (Gargrove)
Ideal geometry (proteins) : Engh & Huber (2001)
Ideal geometry (DNA, RNA) : Parkinson et al. (1996)
Validation Pipeline (wwPDB-VP) : 2.13.1

1 Overall quality at a glance

The following experimental techniques were used to determine the structure:
X-RAY DIFFRACTION

The reported resolution of this entry is 1.65 Å.

Percentile scores (ranging between 0-100) for global validation metrics of the entry are shown in the following graphic. The table shows the number of entries on which the scores are based.



Metric	Whole archive (#Entries)	Similar resolution (#Entries, resolution range(Å))
R_{free}	130704	1827 (1.66-1.66)
Clashscore	141614	1931 (1.66-1.66)
Ramachandran outliers	138981	1891 (1.66-1.66)
Sidechain outliers	138945	1891 (1.66-1.66)
RSRZ outliers	127900	1791 (1.66-1.66)

The table below summarises the geometric issues observed across the polymeric chains and their fit to the electron density. The red, orange, yellow and green segments on the lower bar indicate the fraction of residues that contain outliers for ≥ 3 , 2, 1 and 0 types of geometric quality criteria respectively. A grey segment represents the fraction of residues that are not modelled. The numeric value for each fraction is indicated below the corresponding segment, with a dot representing fractions $\leq 5\%$. The upper red bar (where present) indicates the fraction of residues that have poor fit to the electron density. The numeric value is given above the bar.

Mol	Chain	Length	Quality of chain
1	A	318	
2	B	314	
3	C	315	
4	D	317	

2 Entry composition [i](#)

There are 6 unique types of molecules in this entry. The entry contains 10218 atoms, of which 0 are hydrogens and 0 are deuteriums.

In the tables below, the ZeroOcc column contains the number of atoms modelled with zero occupancy, the AltConf column contains the number of residues with at least one atom in alternate conformation and the Trace column contains the number of residues modelled with at most 2 atoms.

- Molecule 1 is a protein called L-asparaginase.

Mol	Chain	Residues	Atoms					ZeroOcc	AltConf	Trace
			Total	C	N	O	S			
1	A	318	2363	1484	407	464	8	0	0	0

There are 11 discrepancies between the modelled and reference sequences:

Chain	Residue	Modelled	Actual	Comment	Reference
A	?	-	GLY	deletion	UNP P50286
A	?	-	GLU	deletion	UNP P50286
A	?	-	SER	deletion	UNP P50286
A	?	-	SER	deletion	UNP P50286
A	?	-	VAL	deletion	UNP P50286
A	?	-	LYS	deletion	UNP P50286
A	?	-	SER	deletion	UNP P50286
A	?	-	SER	deletion	UNP P50286
A	?	-	TYR	deletion	UNP P50286
A	?	-	SER	deletion	UNP P50286
A	121	PRO	SER	conflict	UNP P50286

- Molecule 2 is a protein called L-asparaginase.

Mol	Chain	Residues	Atoms					ZeroOcc	AltConf	Trace
			Total	C	N	O	S			
2	B	314	2343	1473	403	459	8	0	0	0

There are 15 discrepancies between the modelled and reference sequences:

Chain	Residue	Modelled	Actual	Comment	Reference
B	?	-	SER	deletion	UNP P50286
B	?	-	GLY	deletion	UNP P50286
B	?	-	GLU	deletion	UNP P50286
B	?	-	SER	deletion	UNP P50286
B	?	-	SER	deletion	UNP P50286

Continued on next page...

Continued from previous page...

Chain	Residue	Modelled	Actual	Comment	Reference
B	?	-	VAL	deletion	UNP P50286
B	?	-	LYS	deletion	UNP P50286
B	?	-	SER	deletion	UNP P50286
B	?	-	SER	deletion	UNP P50286
B	?	-	TYR	deletion	UNP P50286
B	?	-	SER	deletion	UNP P50286
B	?	-	ALA	deletion	UNP P50286
B	?	-	GLY	deletion	UNP P50286
B	?	-	ALA	deletion	UNP P50286
B	121	PRO	SER	conflict	UNP P50286

- Molecule 3 is a protein called L-asparaginase.

Mol	Chain	Residues	Atoms					ZeroOcc	AltConf	Trace
3	C	315	Total	C	N	O	S	0	0	0
			2348	1476	404	460	8			

There are 14 discrepancies between the modelled and reference sequences:

Chain	Residue	Modelled	Actual	Comment	Reference
C	?	-	SER	deletion	UNP P50286
C	?	-	GLY	deletion	UNP P50286
C	?	-	GLU	deletion	UNP P50286
C	?	-	SER	deletion	UNP P50286
C	?	-	SER	deletion	UNP P50286
C	?	-	VAL	deletion	UNP P50286
C	?	-	LYS	deletion	UNP P50286
C	?	-	SER	deletion	UNP P50286
C	?	-	SER	deletion	UNP P50286
C	?	-	TYR	deletion	UNP P50286
C	?	-	SER	deletion	UNP P50286
C	?	-	ALA	deletion	UNP P50286
C	?	-	GLY	deletion	UNP P50286
C	121	PRO	SER	conflict	UNP P50286

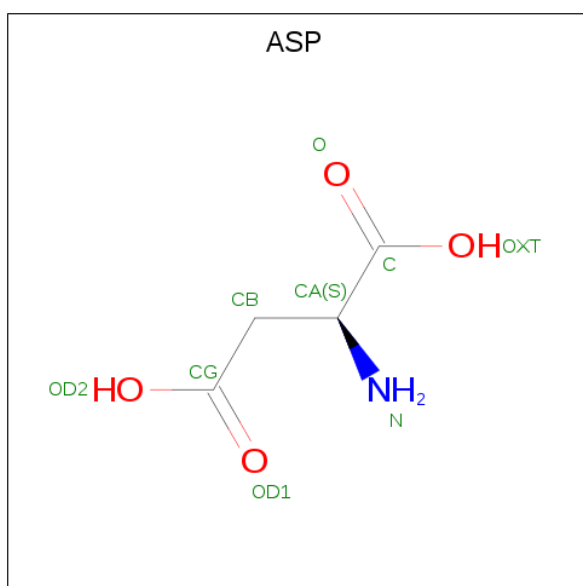
- Molecule 4 is a protein called L-asparaginase.

Mol	Chain	Residues	Atoms					ZeroOcc	AltConf	Trace
4	D	317	Total	C	N	O	S	0	0	0
			2358	1481	406	463	8			

There are 12 discrepancies between the modelled and reference sequences:

Chain	Residue	Modelled	Actual	Comment	Reference
D	?	-	GLU	deletion	UNP P50286
D	?	-	SER	deletion	UNP P50286
D	?	-	SER	deletion	UNP P50286
D	?	-	VAL	deletion	UNP P50286
D	?	-	LYS	deletion	UNP P50286
D	?	-	SER	deletion	UNP P50286
D	?	-	SER	deletion	UNP P50286
D	?	-	TYR	deletion	UNP P50286
D	?	-	SER	deletion	UNP P50286
D	?	-	ALA	deletion	UNP P50286
D	?	-	GLY	deletion	UNP P50286
D	121	PRO	SER	conflict	UNP P50286

- Molecule 5 is ASPARTIC ACID (three-letter code: ASP) (formula: C₄H₇NO₄).



Mol	Chain	Residues	Atoms				ZeroOcc	AltConf
			Total	C	N	O		
5	A	1	9	4	1	4	0	0
5	B	1	9	4	1	4	0	0
5	C	1	9	4	1	4	0	0
5	D	1	9	4	1	4	0	0

- Molecule 6 is water.

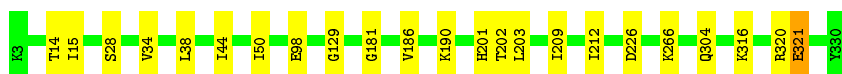
Mol	Chain	Residues	Atoms		ZeroOcc	AltConf
6	A	217	Total 217	O 217	0	0
6	B	192	Total 192	O 192	0	0
6	C	185	Total 185	O 185	0	0
6	D	176	Total 176	O 176	0	0

3 Residue-property plots [i](#)

These plots are drawn for all protein, RNA, DNA and oligosaccharide chains in the entry. The first graphic for a chain summarises the proportions of the various outlier classes displayed in the second graphic. The second graphic shows the sequence view annotated by issues in geometry and electron density. Residues are color-coded according to the number of geometric quality criteria for which they contain at least one outlier: green = 0, yellow = 1, orange = 2 and red = 3 or more. A red dot above a residue indicates a poor fit to the electron density ($RSRZ > 2$). Stretches of 2 or more consecutive residues without any outlier are shown as a green connector. Residues present in the sample, but not in the model, are shown in grey.

- Molecule 1: L-asparaginase

Chain A: 

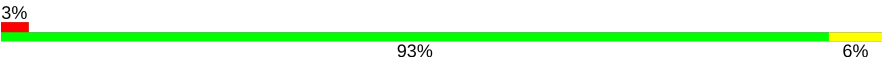


- Molecule 2: L-asparaginase

Chain B: 

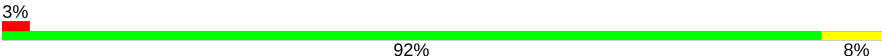


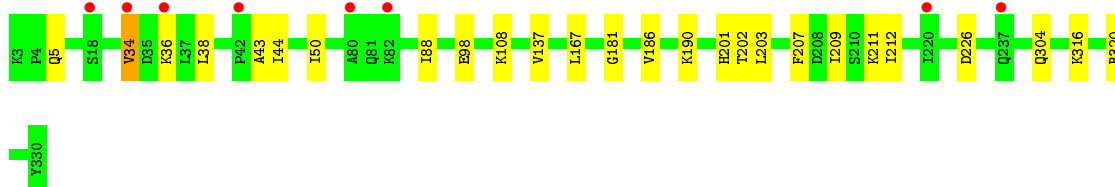
- Molecule 3: L-asparaginase

Chain C: 



- Molecule 4: L-asparaginase

Chain D: 



4 Data and refinement statistics

Property	Value	Source
Space group	P 1 21 1	Depositor
Cell constants a, b, c, α , β , γ	64.92Å 134.36Å 73.15Å 90.00° 93.70° 90.00°	Depositor
Resolution (Å)	30.00 – 1.65 29.82 – 1.65	Depositor EDS
% Data completeness (in resolution range)	97.4 (30.00-1.65) 97.5 (29.82-1.65)	Depositor EDS
R_{merge}	(Not available)	Depositor
R_{sym}	(Not available)	Depositor
$\langle I/\sigma(I) \rangle$ ¹	2.74 (at 1.65Å)	Xtrriage
Refinement program	REFMAC 5.8.0238	Depositor
R, R_{free}	0.169 , 0.200 0.178 , 0.206	Depositor DCC
R_{free} test set	7333 reflections (5.02%)	wwPDB-VP
Wilson B-factor (Å ²)	16.2	Xtrriage
Anisotropy	0.022	Xtrriage
Bulk solvent k_{sol} (e/Å ³), B_{sol} (Å ²)	0.33 , 35.1	EDS
L-test for twinning ²	$\langle L \rangle = 0.48$, $\langle L^2 \rangle = 0.31$	Xtrriage
Estimated twinning fraction	No twinning to report.	Xtrriage
F_o, F_c correlation	0.96	EDS
Total number of atoms	10218	wwPDB-VP
Average B, all atoms (Å ²)	18.0	wwPDB-VP

Xtrriage's analysis on translational NCS is as follows: *The largest off-origin peak in the Patterson function is 4.09% of the height of the origin peak. No significant pseudotranslation is detected.*

¹Intensities estimated from amplitudes.

²Theoretical values of $\langle |L| \rangle$, $\langle L^2 \rangle$ for acentric reflections are 0.5, 0.333 respectively for untwinned datasets, and 0.375, 0.2 for perfectly twinned datasets.

5 Model quality [i](#)

5.1 Standard geometry [i](#)

The Z score for a bond length (or angle) is the number of standard deviations the observed value is removed from the expected value. A bond length (or angle) with $|Z| > 5$ is considered an outlier worth inspection. RMSZ is the root-mean-square of all Z scores of the bond lengths (or angles).

Mol	Chain	Bond lengths		Bond angles	
		RMSZ	# Z >5	RMSZ	# Z >5
1	A	0.77	1/2394 (0.0%)	0.87	0/3245
2	B	0.76	1/2374 (0.0%)	0.88	0/3218
3	C	0.76	0/2379	0.91	1/3225 (0.0%)
4	D	0.76	0/2389	0.86	0/3238
All	All	0.76	2/9536 (0.0%)	0.88	1/12926 (0.0%)

All (2) bond length outliers are listed below:

Mol	Chain	Res	Type	Atoms	Z	Observed(Å)	Ideal(Å)
2	B	321	GLU	CD-OE1	5.55	1.31	1.25
1	A	321	GLU	CD-OE1	5.47	1.31	1.25

All (1) bond angle outliers are listed below:

Mol	Chain	Res	Type	Atoms	Z	Observed(°)	Ideal(°)
3	C	320	ARG	NE-CZ-NH1	6.28	123.44	120.30

There are no chirality outliers.

There are no planarity outliers.

5.2 Too-close contacts [i](#)

In the following table, the Non-H and H(model) columns list the number of non-hydrogen atoms and hydrogen atoms in the chain respectively. The H(added) column lists the number of hydrogen atoms added and optimized by MolProbity. The Clashes column lists the number of clashes within the asymmetric unit, whereas Symm-Clashes lists symmetry related clashes.

Mol	Chain	Non-H	H(model)	H(added)	Clashes	Symm-Clashes
1	A	2363	0	2424	12	0
2	B	2343	0	2406	16	0
3	C	2348	0	2411	16	0

Continued on next page...

Continued from previous page...

Mol	Chain	Non-H	H(model)	H(added)	Clashes	Symm-Clashes
4	D	2358	0	2419	13	0
5	A	9	0	3	0	0
5	B	9	0	3	0	0
5	C	9	0	3	2	0
5	D	9	0	3	0	0
6	A	217	0	0	3	0
6	B	192	0	0	1	0
6	C	185	0	0	3	0
6	D	176	0	0	2	0
All	All	10218	0	9672	54	0

The all-atom clashscore is defined as the number of clashes found per 1000 atoms (including hydrogen atoms). The all-atom clashscore for this structure is 3.

The worst 5 of 54 close contacts within the same asymmetric unit are listed below, sorted by their clash magnitude.

Atom-1	Atom-2	Interatomic distance (Å)	Clash overlap (Å)
3:C:38:LEU:HD23	3:C:44:ILE:HD11	1.17	1.15
3:C:3:LYS:N	6:C:501:HOH:O	1.91	1.01
3:C:38:LEU:CD2	3:C:44:ILE:HD11	1.91	0.99
6:A:692:HOH:O	3:C:14:THR:HG21	1.87	0.73
3:C:5:GLN:HG2	6:C:542:HOH:O	1.91	0.70

There are no symmetry-related clashes.

5.3 Torsion angles [i](#)

5.3.1 Protein backbone [i](#)

In the following table, the Percentiles column shows the percent Ramachandran outliers of the chain as a percentile score with respect to all X-ray entries followed by that with respect to entries of similar resolution.

The Analysed column shows the number of residues for which the backbone conformation was analysed, and the total number of residues.

Mol	Chain	Analysed	Favoured	Allowed	Outliers	Percentiles
1	A	314/318 (99%)	305 (97%)	9 (3%)	0	100 100
2	B	310/314 (99%)	301 (97%)	9 (3%)	0	100 100

Continued on next page...

Continued from previous page...

Mol	Chain	Analysed	Favoured	Allowed	Outliers	Percentiles	
3	C	311/315 (99%)	301 (97%)	10 (3%)	0	100	100
4	D	313/317 (99%)	301 (96%)	11 (4%)	1 (0%)	41	22
All	All	1248/1264 (99%)	1208 (97%)	39 (3%)	1 (0%)	51	31

All (1) Ramachandran outliers are listed below:

Mol	Chain	Res	Type
4	D	43	ALA

5.3.2 Protein sidechains [i](#)

In the following table, the Percentiles column shows the percent sidechain outliers of the chain as a percentile score with respect to all X-ray entries followed by that with respect to entries of similar resolution.

The Analysed column shows the number of residues for which the sidechain conformation was analysed, and the total number of residues.

Mol	Chain	Analysed	Rotameric	Outliers	Percentiles	
1	A	255/255 (100%)	249 (98%)	6 (2%)	49	23
2	B	254/254 (100%)	248 (98%)	6 (2%)	49	23
3	C	254/254 (100%)	247 (97%)	7 (3%)	43	18
4	D	255/255 (100%)	248 (97%)	7 (3%)	44	19
All	All	1018/1018 (100%)	992 (97%)	26 (3%)	47	21

5 of 26 residues with a non-rotameric sidechain are listed below:

Mol	Chain	Res	Type
2	B	316	LYS
3	C	36	LYS
4	D	226	ASP
3	C	14	THR
3	C	35	ASP

Some sidechains can be flipped to improve hydrogen bonding and reduce clashes. 5 of 15 such sidechains are listed below:

Mol	Chain	Res	Type
2	B	259	ASN

Continued on next page...

Continued from previous page...

Mol	Chain	Res	Type
3	C	81	GLN
4	D	110	GLN
2	B	201	HIS
4	D	81	GLN

5.3.3 RNA [i](#)

There are no RNA molecules in this entry.

5.4 Non-standard residues in protein, DNA, RNA chains [i](#)

There are no non-standard protein/DNA/RNA residues in this entry.

5.5 Carbohydrates [i](#)

There are no monosaccharides in this entry.

5.6 Ligand geometry [i](#)

4 ligands are modelled in this entry.

There are no bond length outliers.

There are no bond angle outliers.

There are no chirality outliers.

There are no torsion outliers.

There are no ring outliers.

No monomer is involved in short contacts.

5.7 Other polymers [i](#)

There are no such residues in this entry.

5.8 Polymer linkage issues [i](#)

The following chains have linkage breaks:

Mol	Chain	Number of breaks
2	B	1
1	A	1
4	D	1
3	C	1

All chain breaks are listed below:

Model	Chain	Residue-1	Atom-1	Residue-2	Atom-2	Distance (Å)
1	A	17:GLY	C	28:SER	N	17.13
1	D	19:GLY	C	31:ALA	N	9.05
1	C	17:GLY	C	31:ALA	N	6.49
1	B	17:GLY	C	32:VAL	N	5.48

6 Fit of model and data [i](#)

6.1 Protein, DNA and RNA chains [i](#)

In the following table, the column labelled '#RSRZ > 2' contains the number (and percentage) of RSRZ outliers, followed by percent RSRZ outliers for the chain as percentile scores relative to all X-ray entries and entries of similar resolution. The OWAB column contains the minimum, median, 95th percentile and maximum values of the occupancy-weighted average B-factor per residue. The column labelled 'Q < 0.9' lists the number of (and percentage) of residues with an average occupancy less than 0.9.

Mol	Chain	Analysed	<RSRZ>	#RSRZ>2	OWAB(Å ²)	Q<0.9
1	A	318/318 (100%)	-0.22	0 100 100	10, 14, 26, 35	0
2	B	314/314 (100%)	-0.09	4 (1%) 77 80	10, 16, 35, 59	0
3	C	315/315 (100%)	-0.00	8 (2%) 57 58	10, 16, 34, 58	0
4	D	317/317 (100%)	0.04	8 (2%) 57 58	11, 17, 38, 53	0
All	All	1264/1264 (100%)	-0.07	20 (1%) 72 75	10, 16, 34, 59	0

The worst 5 of 20 RSRZ outliers are listed below:

Mol	Chain	Res	Type	RSRZ
3	C	31	ALA	5.4
3	C	33	THR	5.1
3	C	38	LEU	4.5
2	B	33	THR	4.3
4	D	42	PRO	4.0

6.2 Non-standard residues in protein, DNA, RNA chains [i](#)

There are no non-standard protein/DNA/RNA residues in this entry.

6.3 Carbohydrates [i](#)

There are no monosaccharides in this entry.

6.4 Ligands [i](#)

In the following table, the Atoms column lists the number of modelled atoms in the group and the number defined in the chemical component dictionary. The B-factors column lists the minimum, median, 95th percentile and maximum values of B factors of atoms in the group. The column labelled 'Q < 0.9' lists the number of atoms with occupancy less than 0.9.

Mol	Type	Chain	Res	Atoms	RSCC	RSR	B-factors(\AA^2)	Q<0.9
5	ASP	A	400	9/9	0.93	0.11	12,20,28,30	0
5	ASP	D	400	9/9	0.97	0.07	12,14,17,17	0
5	ASP	B	400	9/9	0.97	0.07	13,14,15,16	0
5	ASP	C	400	9/9	0.98	0.06	13,16,17,18	0

6.5 Other polymers [i](#)

There are no such residues in this entry.