



wwPDB X-ray Structure Validation Summary Report ⓘ

Jun 7, 2020 – 03:27 am BST

PDB ID : 6IAG
Title : Crystal structure of human phosphodiesterase 4D2 catalytic domain with inhibitor NPD-637
Authors : Singh, A.K.; Brown, D.G.
Deposited on : 2018-11-26
Resolution : 2.00 Å(reported)

This is a wwPDB X-ray Structure Validation Summary Report for a publicly released PDB entry.

We welcome your comments at validation@mail.wwpdb.org

A user guide is available at

<https://www.wwpdb.org/validation/2017/XrayValidationReportHelp>

with specific help available everywhere you see the ⓘ symbol.

The following versions of software and data (see [references ⓘ](#)) were used in the production of this report:

MolProbity : 4.02b-467
Mogul : 1.8.5 (274361), CSD as541be (2020)
Xtriage (Phenix) : 1.13
EDS : 2.11
buster-report : 1.1.7 (2018)
Percentile statistics : 20191225.v01 (using entries in the PDB archive December 25th 2019)
Refmac : 5.8.0158
CCP4 : 7.0.044 (Gargrove)
Ideal geometry (proteins) : Engh & Huber (2001)
Ideal geometry (DNA, RNA) : Parkinson et al. (1996)
Validation Pipeline (wwPDB-VP) : 2.11

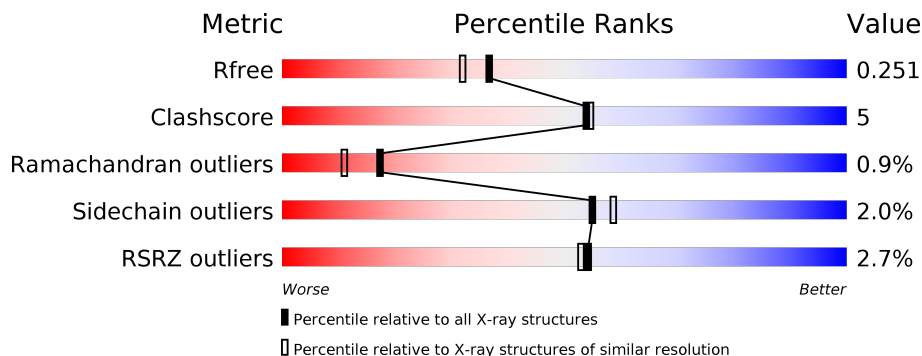
1 Overall quality at a glance

The following experimental techniques were used to determine the structure:

X-RAY DIFFRACTION

The reported resolution of this entry is 2.00 Å.

Percentile scores (ranging between 0-100) for global validation metrics of the entry are shown in the following graphic. The table shows the number of entries on which the scores are based.



Metric	Whole archive (#Entries)	Similar resolution (#Entries, resolution range(Å))
R_{free}	130704	8085 (2.00-2.00)
Clashscore	141614	9178 (2.00-2.00)
Ramachandran outliers	138981	9054 (2.00-2.00)
Sidechain outliers	138945	9053 (2.00-2.00)
RSRZ outliers	127900	7900 (2.00-2.00)

The table below summarises the geometric issues observed across the polymeric chains and their fit to the electron density. The red, orange, yellow and green segments on the lower bar indicate the fraction of residues that contain outliers for ≥ 3 , 2, 1 and 0 types of geometric quality criteria respectively. A grey segment represents the fraction of residues that are not modelled. The numeric value for each fraction is indicated below the corresponding segment, with a dot representing fractions $\leq 5\%$. The upper red bar (where present) indicates the fraction of residues that have poor fit to the electron density. The numeric value is given above the bar.

Mol	Chain	Length	Quality of chain
1	A	364	 5% 81% 8% • 10%
1	B	364	 81% 7% • 11%
1	C	364	 3% 77% 10% • 11%
1	D	364	 78% 10% • 11%

The following table lists non-polymeric compounds, carbohydrate monomers and non-standard residues in protein, DNA, RNA chains that are outliers for geometric or electron-density-fit crite-

ria:

Mol	Type	Chain	Res	Chirality	Geometry	Clashes	Electron density
5	E3Q	A	513	-	-	-	X

2 Entry composition i

There are 8 unique types of molecules in this entry. The entry contains 11530 atoms, of which 0 are hydrogens and 0 are deuteriums.

In the tables below, the ZeroOcc column contains the number of atoms modelled with zero occupancy, the AltConf column contains the number of residues with at least one atom in alternate conformation and the Trace column contains the number of residues modelled with at most 2 atoms.

- Molecule 1 is a protein called cAMP-specific 3',5'-cyclic phosphodiesterase 4D.

Mol	Chain	Residues	Atoms					ZeroOcc	AltConf	Trace
			Total	C	N	O	S			
1	A	329	Total 2658	C 1681	N 454	O 509	S 14	0	0	0
1	B	324	Total 2622	C 1659	N 448	O 501	S 14	0	0	0
1	C	323	Total 2613	C 1654	N 446	O 499	S 14	0	0	0
1	D	324	Total 2628	C 1663	N 449	O 502	S 14	0	1	0

There are 16 discrepancies between the modelled and reference sequences:

Chain	Residue	Modelled	Actual	Comment	Reference
A	75	GLY	-	expression tag	UNP Q08499
A	76	SER	-	expression tag	UNP Q08499
A	77	HIS	-	expression tag	UNP Q08499
A	78	MET	-	expression tag	UNP Q08499
B	75	GLY	-	expression tag	UNP Q08499
B	76	SER	-	expression tag	UNP Q08499
B	77	HIS	-	expression tag	UNP Q08499
B	78	MET	-	expression tag	UNP Q08499
C	75	GLY	-	expression tag	UNP Q08499
C	76	SER	-	expression tag	UNP Q08499
C	77	HIS	-	expression tag	UNP Q08499
C	78	MET	-	expression tag	UNP Q08499
D	75	GLY	-	expression tag	UNP Q08499
D	76	SER	-	expression tag	UNP Q08499
D	77	HIS	-	expression tag	UNP Q08499
D	78	MET	-	expression tag	UNP Q08499

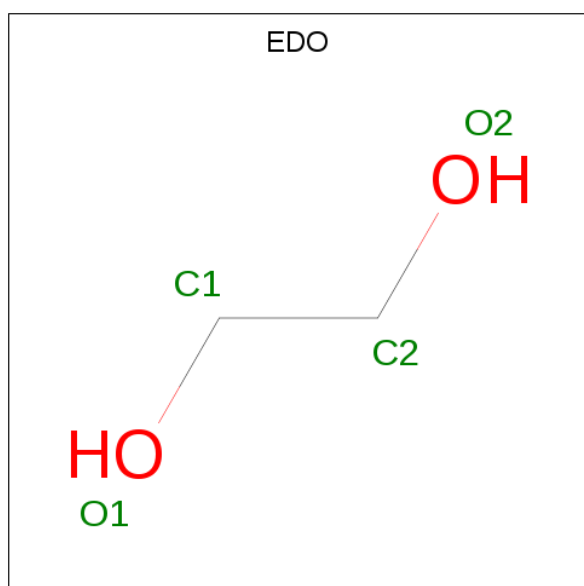
- Molecule 2 is ZINC ION (three-letter code: ZN) (formula: Zn).

Mol	Chain	Residues	Atoms	ZeroOcc	AltConf
2	B	1	Total Zn 1 1	0	0
2	A	1	Total Zn 1 1	0	0
2	D	1	Total Zn 1 1	0	0
2	C	1	Total Zn 1 1	0	0

- Molecule 3 is MAGNESIUM ION (three-letter code: MG) (formula: Mg).

Mol	Chain	Residues	Atoms	ZeroOcc	AltConf
3	B	1	Total Mg 1 1	0	0
3	A	1	Total Mg 1 1	0	0
3	D	1	Total Mg 1 1	0	0
3	C	1	Total Mg 1 1	0	0

- Molecule 4 is 1,2-ETHANEDIOL (three-letter code: EDO) (formula: C₂H₆O₂).



Mol	Chain	Residues	Atoms	ZeroOcc	AltConf
4	A	1	Total C O 4 2 2	0	0
4	A	1	Total C O 4 2 2	0	0

Continued on next page...

Continued from previous page...

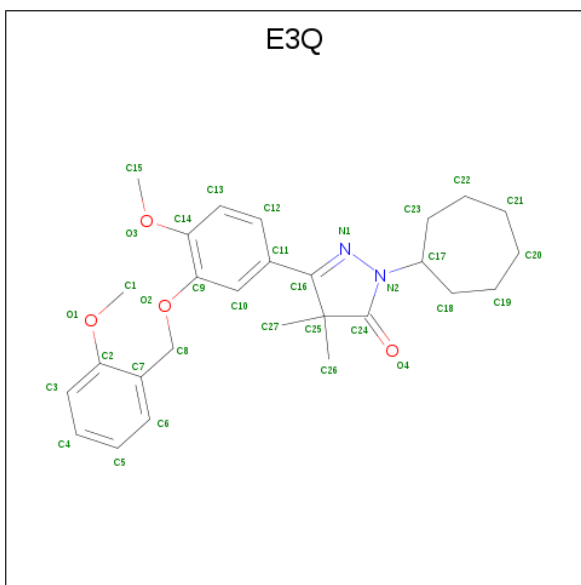
Mol	Chain	Residues	Atoms			ZeroOcc	AltConf
4	A	1	Total	C	O	0	0
			4	2	2		
4	A	1	Total	C	O	0	0
			4	2	2		
4	A	1	Total	C	O	0	0
			4	2	2		
4	A	1	Total	C	O	0	0
			4	2	2		
4	A	1	Total	C	O	0	0
			4	2	2		
4	A	1	Total	C	O	0	0
			4	2	2		
4	A	1	Total	C	O	0	0
			4	2	2		
4	B	1	Total	C	O	0	0
			4	2	2		
4	B	1	Total	C	O	0	0
			4	2	2		
4	B	1	Total	C	O	0	0
			4	2	2		
4	B	1	Total	C	O	0	0
			4	2	2		
4	B	1	Total	C	O	0	0
			4	2	2		
4	B	1	Total	C	O	0	0
			4	2	2		
4	C	1	Total	C	O	0	0
			4	2	2		
4	C	1	Total	C	O	0	0
			4	2	2		
4	C	1	Total	C	O	0	0
			4	2	2		
4	C	1	Total	C	O	0	0
			4	2	2		
4	C	1	Total	C	O	0	0
			4	2	2		
4	D	1	Total	C	O	0	0
			4	2	2		
4	D	1	Total	C	O	0	0
			4	2	2		

Continued on next page...

Continued from previous page...

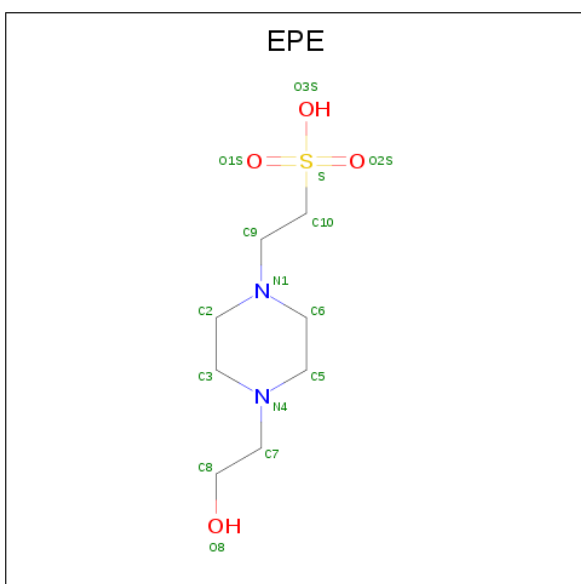
Mol	Chain	Residues	Atoms			ZeroOcc	AltConf
4	D	1	Total	C	O	0	0
			4	2	2		
4	D	1	Total	C	O	0	0
			4	2	2		
4	D	1	Total	C	O	0	0
			4	2	2		
4	D	1	Total	C	O	0	0
			4	2	2		
4	D	1	Total	C	O	0	0
			4	2	2		
4	D	1	Total	C	O	0	0
			4	2	2		
4	D	1	Total	C	O	0	0
			4	2	2		
4	D	1	Total	C	O	0	0
			4	2	2		
4	D	1	Total	C	O	0	0
			4	2	2		

- Molecule 5 is 1-cycloheptyl-3-{4-methoxy-3-[(2-methoxyphenyl)methoxy]phenyl}-4,4-dimethyl-4,5-dihydro-1H-pyrazol-5-one (three-letter code: E3Q) (formula: C₂₇H₃₄N₂O₄) (labeled as "Ligand of Interest" by author).



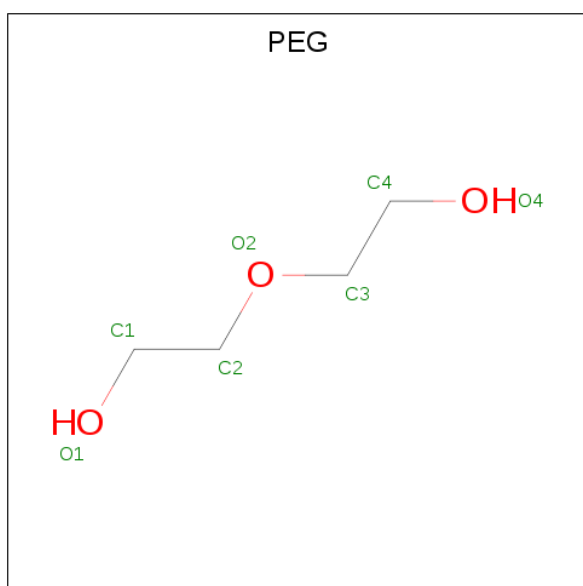
Mol	Chain	Residues	Atoms				ZeroOcc	AltConf
			Total	C	N	O		
5	A	1	Total	C	N	O	0	0
			33	27	2	4		
5	B	1	Total	C	N	O	0	0
			33	27	2	4		
5	C	1	Total	C	N	O	0	0
			33	27	2	4		
5	D	1	Total	C	N	O	0	0
			33	27	2	4		

- Molecule 6 is 4-(2-HYDROXYETHYL)-1-PIPERAZINE ETHANESULFONIC ACID (three-letter code: EPE) (formula: C₈H₁₈N₂O₄S).



Mol	Chain	Residues	Atoms					ZeroOcc	AltConf
6	B	1	Total	C	N	O	S	0	0
			15	8	2	4	1		
6	B	1	Total	C	N	O	S	0	0
			15	8	2	4	1		
6	C	1	Total	C	N	O	S	0	0
			15	8	2	4	1		
6	D	1	Total	C	N	O	S	0	0
			15	8	2	4	1		

- Molecule 7 is DI(HYDROXYETHYL)ETHER (three-letter code: PEG) (formula: C₄H₁₀O₃).



Mol	Chain	Residues	Atoms			ZeroOcc	AltConf
7	D	1	Total	C	O	0	0
			7	4	3		
7	D	1	Total	C	O	0	0
			7	4	3		

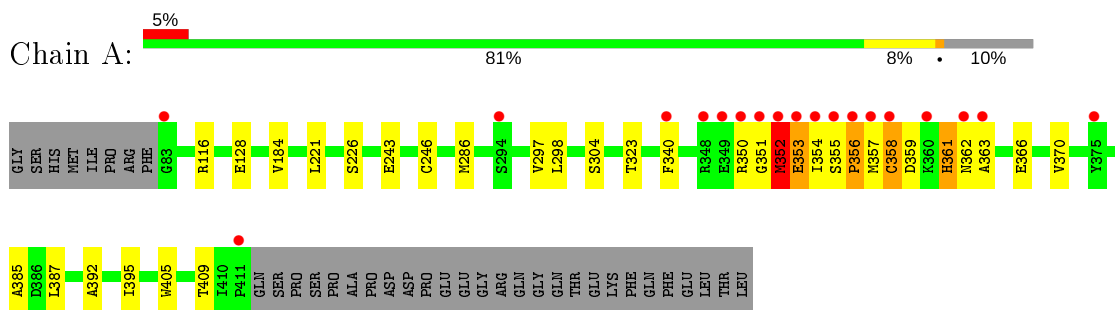
- Molecule 8 is water.

Mol	Chain	Residues	Atoms		ZeroOcc	AltConf
8	A	165	Total	O	0	0
			165	165		
8	B	161	Total	O	0	0
			161	161		
8	C	129	Total	O	0	0
			129	129		
8	D	200	Total	O	0	0
			200	200		

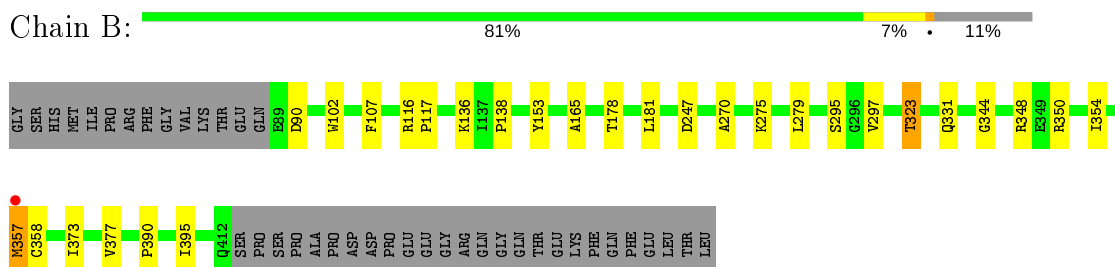
3 Residue-property plots [i](#)

These plots are drawn for all protein, RNA and DNA chains in the entry. The first graphic for a chain summarises the proportions of the various outlier classes displayed in the second graphic. The second graphic shows the sequence view annotated by issues in geometry and electron density. Residues are color-coded according to the number of geometric quality criteria for which they contain at least one outlier: green = 0, yellow = 1, orange = 2 and red = 3 or more. A red dot above a residue indicates a poor fit to the electron density ($RSRZ > 2$). Stretches of 2 or more consecutive residues without any outlier are shown as a green connector. Residues present in the sample, but not in the model, are shown in grey.

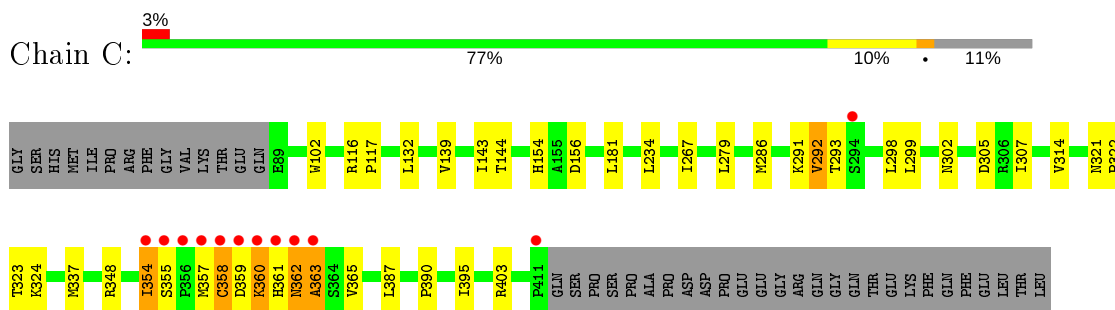
- Molecule 1: cAMP-specific 3',5'-cyclic phosphodiesterase 4D



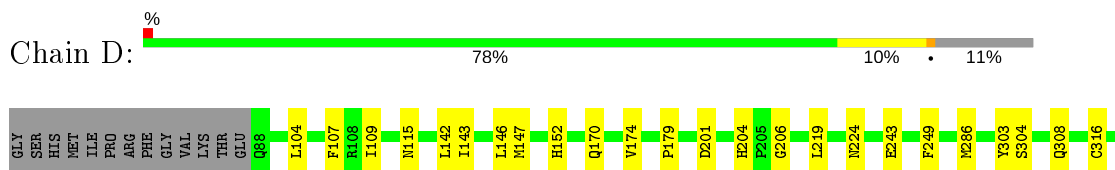
- Molecule 1: cAMP-specific 3',5'-cyclic phosphodiesterase 4D



- Molecule 1: cAMP-specific 3',5'-cyclic phosphodiesterase 4D



- Molecule 1: cAMP-specific 3',5'-cyclic phosphodiesterase 4D





4 Data and refinement statistics

Property	Value	Source
Space group	P 21 21 21	Depositor
Cell constants a, b, c, α , β , γ	99.11Å 110.31Å 160.72Å 90.00° 90.00° 90.00°	Depositor
Resolution (Å)	84.50 – 2.00 84.36 – 2.00	Depositor EDS
% Data completeness (in resolution range)	98.1 (84.50-2.00) 98.1 (84.36-2.00)	Depositor EDS
R_{merge}	0.12	Depositor
R_{sym}	(Not available)	Depositor
$\langle I/\sigma(I) \rangle$ ¹	2.15 (at 2.00Å)	Xtrriage
Refinement program	REFMAC 5.8.0238	Depositor
R, R_{free}	0.200 , 0.246 0.210 , 0.251	Depositor DCC
R_{free} test set	5902 reflections (5.04%)	wwPDB-VP
Wilson B-factor (Å ²)	27.9	Xtrriage
Anisotropy	0.165	Xtrriage
Bulk solvent k_{sol} (e/Å ³), B_{sol} (Å ²)	0.36 , 51.2	EDS
L-test for twinning ²	$\langle L \rangle = 0.50$, $\langle L^2 \rangle = 0.33$	Xtrriage
Estimated twinning fraction	No twinning to report.	Xtrriage
F_o, F_c correlation	0.95	EDS
Total number of atoms	11530	wwPDB-VP
Average B, all atoms (Å ²)	38.0	wwPDB-VP

Xtrriage's analysis on translational NCS is as follows: *The largest off-origin peak in the Patterson function is 2.92% of the height of the origin peak. No significant pseudotranslation is detected.*

¹Intensities estimated from amplitudes.

²Theoretical values of $\langle |L| \rangle$, $\langle L^2 \rangle$ for acentric reflections are 0.5, 0.333 respectively for untwinned datasets, and 0.375, 0.2 for perfectly twinned datasets.

5 Model quality [i](#)

5.1 Standard geometry [i](#)

Bond lengths and bond angles in the following residue types are not validated in this section: MG, PEG, E3Q, ZN, EDO, EPE

The Z score for a bond length (or angle) is the number of standard deviations the observed value is removed from the expected value. A bond length (or angle) with $|Z| > 5$ is considered an outlier worth inspection. RMSZ is the root-mean-square of all Z scores of the bond lengths (or angles).

Mol	Chain	Bond lengths		Bond angles	
		RMSZ	# $ Z > 5$	RMSZ	# $ Z > 5$
1	A	0.77	1/2712 (0.0%)	0.80	0/3684
1	B	0.74	0/2676	0.81	0/3636
1	C	0.74	0/2667	0.80	0/3624
1	D	0.74	0/2685	0.79	0/3648
All	All	0.75	1/10740 (0.0%)	0.80	0/14592

All (1) bond length outliers are listed below:

Mol	Chain	Res	Type	Atoms	Z	Observed(Å)	Ideal(Å)
1	A	116	ARG	C-N	8.48	1.50	1.34

There are no bond angle outliers.

There are no chirality outliers.

There are no planarity outliers.

5.2 Too-close contacts [i](#)

In the following table, the Non-H and H(model) columns list the number of non-hydrogen atoms and hydrogen atoms in the chain respectively. The H(added) column lists the number of hydrogen atoms added and optimized by MolProbity. The Clashes column lists the number of clashes within the asymmetric unit, whereas Symm-Clashes lists symmetry related clashes.

Mol	Chain	Non-H	H(model)	H(added)	Clashes	Symm-Clashes
1	A	2658	0	2616	24	0
1	B	2622	0	2578	22	0
1	C	2613	0	2570	34	0
1	D	2628	0	2586	32	0
2	A	1	0	0	0	0
2	B	1	0	0	0	0

Continued on next page...

Continued from previous page...

Mol	Chain	Non-H	H(model)	H(added)	Clashes	Symm-Clashes
2	C	1	0	0	0	0
2	D	1	0	0	0	0
3	A	1	0	0	0	0
3	B	1	0	0	0	0
3	C	1	0	0	0	0
3	D	1	0	0	0	0
4	A	40	0	60	1	0
4	B	24	0	36	3	0
4	C	20	0	30	0	0
4	D	56	0	84	9	0
5	A	33	0	0	2	0
5	B	33	0	0	1	0
5	C	33	0	0	0	0
5	D	33	0	0	1	0
6	B	30	0	34	3	0
6	C	15	0	18	0	0
6	D	15	0	18	1	0
7	D	14	0	20	3	0
8	A	165	0	0	0	0
8	B	161	0	0	3	0
8	C	129	0	0	0	0
8	D	200	0	0	3	0
All	All	11530	0	10650	113	0

The all-atom clashscore is defined as the number of clashes found per 1000 atoms (including hydrogen atoms). The all-atom clashscore for this structure is 5.

The worst 5 of 113 close contacts within the same asymmetric unit are listed below, sorted by their clash magnitude.

Atom-1	Atom-2	Interatomic distance (Å)	Clash overlap (Å)
1:A:351:GLY:O	1:A:353:GLU:N	1.61	1.31
1:A:359:ASP:O	1:A:363:ALA:HB3	1.27	1.30
1:C:359:ASP:O	1:C:361:HIS:N	1.93	1.01
1:C:358:CYS:O	1:C:359:ASP:OD1	1.79	0.99
1:B:354:ILE:HG12	8:B:602:HOH:O	1.66	0.94

There are no symmetry-related clashes.

5.3 Torsion angles [i](#)

5.3.1 Protein backbone [i](#)

In the following table, the Percentiles column shows the percent Ramachandran outliers of the chain as a percentile score with respect to all X-ray entries followed by that with respect to entries of similar resolution.

The Analysed column shows the number of residues for which the backbone conformation was analysed, and the total number of residues.

Mol	Chain	Analysed	Favoured	Allowed	Outliers	Percentiles	
1	A	327/364 (90%)	310 (95%)	12 (4%)	5 (2%)	10	4
1	B	322/364 (88%)	317 (98%)	5 (2%)	0	100	100
1	C	321/364 (88%)	307 (96%)	11 (3%)	3 (1%)	17	11
1	D	323/364 (89%)	315 (98%)	5 (2%)	3 (1%)	17	11
All	All	1293/1456 (89%)	1249 (97%)	33 (3%)	11 (1%)	17	11

5 of 11 Ramachandran outliers are listed below:

Mol	Chain	Res	Type
1	A	352	MET
1	A	362	ASN
1	C	302	ASN
1	C	360	LYS
1	A	353	GLU

5.3.2 Protein sidechains [i](#)

In the following table, the Percentiles column shows the percent sidechain outliers of the chain as a percentile score with respect to all X-ray entries followed by that with respect to entries of similar resolution.

The Analysed column shows the number of residues for which the sidechain conformation was analysed, and the total number of residues.

Mol	Chain	Analysed	Rotameric	Outliers	Percentiles	
1	A	300/331 (91%)	293 (98%)	7 (2%)	50	53
1	B	296/331 (89%)	291 (98%)	5 (2%)	60	65
1	C	295/331 (89%)	285 (97%)	10 (3%)	37	36
1	D	297/331 (90%)	295 (99%)	2 (1%)	84	88
All	All	1188/1324 (90%)	1164 (98%)	24 (2%)	55	58

5 of 24 residues with a non-rotameric sidechain are listed below:

Mol	Chain	Res	Type
1	B	357	MET
1	C	291	LYS
1	D	357	MET
1	B	390	PRO
1	C	132	LEU

Some sidechains can be flipped to improve hydrogen bonding and reduce clashes. All (3) such sidechains are listed below:

Mol	Chain	Res	Type
1	A	224	ASN
1	B	331	GLN
1	D	88	GLN

5.3.3 RNA [i](#)

There are no RNA molecules in this entry.

5.4 Non-standard residues in protein, DNA, RNA chains [i](#)

There are no non-standard protein/DNA/RNA residues in this entry.

5.5 Carbohydrates [i](#)

There are no carbohydrates in this entry.

5.6 Ligand geometry [i](#)

Of 53 ligands modelled in this entry, 8 are monoatomic - leaving 45 for Mogul analysis.

In the following table, the Counts columns list the number of bonds (or angles) for which Mogul statistics could be retrieved, the number of bonds (or angles) that are observed in the model and the number of bonds (or angles) that are defined in the Chemical Component Dictionary. The Link column lists molecule types, if any, to which the group is linked. The Z score for a bond length (or angle) is the number of standard deviations the observed value is removed from the expected value. A bond length (or angle) with $|Z| > 2$ is considered an outlier worth inspection. RMSZ is the root-mean-square of all Z scores of the bond lengths (or angles).

Mol	Type	Chain	Res	Link	Bond lengths			Bond angles		
					Counts	RMSZ	# Z > 2	Counts	RMSZ	# Z > 2
4	EDO	D	503	-	3,3,3	0.24	0	2,2,2	0.16	0
4	EDO	A	512	-	3,3,3	0.06	0	2,2,2	0.22	0
4	EDO	D	510	-	3,3,3	0.39	0	2,2,2	0.04	0
5	E3Q	D	517	-	35,36,36	0.92	2 (5%)	43,51,51	1.08	5 (11%)
4	EDO	A	506	-	3,3,3	0.20	0	2,2,2	0.49	0
5	E3Q	A	513	-	35,36,36	1.32	1 (2%)	43,51,51	1.27	5 (11%)
4	EDO	A	507	-	3,3,3	0.15	0	2,2,2	0.37	0
4	EDO	A	503	-	3,3,3	0.02	0	2,2,2	0.00	0
7	PEG	D	512	-	6,6,6	0.38	0	5,5,5	0.50	0
4	EDO	D	505	-	3,3,3	0.11	0	2,2,2	0.47	0
6	EPE	D	516	-	15,15,15	1.94	1 (6%)	18,20,20	6.42	5 (27%)
4	EDO	C	503	-	3,3,3	0.13	0	2,2,2	0.34	0
4	EDO	C	509	-	3,3,3	0.09	0	2,2,2	0.20	0
4	EDO	D	513	-	3,3,3	0.13	0	2,2,2	0.29	0
4	EDO	D	508	-	3,3,3	0.25	0	2,2,2	0.38	0
4	EDO	D	515	-	3,3,3	0.38	0	2,2,2	0.30	0
4	EDO	B	506	-	3,3,3	0.25	0	2,2,2	0.49	0
4	EDO	D	518	-	3,3,3	0.31	0	2,2,2	0.49	0
4	EDO	D	519	-	3,3,3	0.31	0	2,2,2	0.38	0
4	EDO	A	508	-	3,3,3	0.09	0	2,2,2	0.22	0
4	EDO	B	504	-	3,3,3	0.19	0	2,2,2	0.14	0
4	EDO	B	507	-	3,3,3	0.13	0	2,2,2	0.09	0
4	EDO	D	514	-	3,3,3	0.19	0	2,2,2	0.21	0
4	EDO	A	505	-	3,3,3	0.20	0	2,2,2	0.14	0
5	E3Q	B	509	-	35,36,36	0.95	2 (5%)	43,51,51	1.07	3 (6%)
4	EDO	D	507	-	3,3,3	1.06	0	2,2,2	0.91	0
4	EDO	D	506	-	3,3,3	0.11	0	2,2,2	0.17	0
4	EDO	A	511	-	3,3,3	0.11	0	2,2,2	0.21	0
4	EDO	A	510	-	3,3,3	0.28	0	2,2,2	0.34	0
7	PEG	D	511	-	6,6,6	0.28	0	5,5,5	0.38	0
4	EDO	B	505	-	3,3,3	0.17	0	2,2,2	0.29	0
4	EDO	C	508	-	3,3,3	0.23	0	2,2,2	0.27	0
4	EDO	D	509	-	3,3,3	0.13	0	2,2,2	0.13	0
4	EDO	D	504	-	3,3,3	0.05	0	2,2,2	0.14	0
4	EDO	B	503	-	3,3,3	0.11	0	2,2,2	0.34	0
6	EPE	B	508	-	15,15,15	2.82	2 (13%)	18,20,20	1.62	3 (16%)
4	EDO	C	506	-	3,3,3	0.17	0	2,2,2	0.21	0
4	EDO	D	520	-	3,3,3	0.12	0	2,2,2	0.15	0
5	E3Q	C	507	-	35,36,36	0.89	1 (2%)	43,51,51	1.11	5 (11%)
6	EPE	B	511	-	15,15,15	1.82	1 (6%)	18,20,20	1.53	3 (16%)
4	EDO	A	504	-	3,3,3	0.72	0	2,2,2	0.44	0

Mol	Type	Chain	Res	Link	Bond lengths			Bond angles		
					Counts	RMSZ	# Z > 2	Counts	RMSZ	# Z > 2
4	EDO	C	504	-	3,3,3	0.17	0	2,2,2	0.23	0
6	EPE	C	505	-	15,15,15	2.38	1 (6%)	18,20,20	1.54	4 (22%)
4	EDO	A	509	-	3,3,3	0.54	0	2,2,2	0.44	0
4	EDO	B	510	-	3,3,3	0.21	0	2,2,2	0.16	0

In the following table, the Chirals column lists the number of chiral outliers, the number of chiral centers analysed, the number of these observed in the model and the number defined in the Chemical Component Dictionary. Similar counts are reported in the Torsion and Rings columns. '-' means no outliers of that kind were identified.

Mol	Type	Chain	Res	Link	Chirals	Torsions	Rings
4	EDO	D	503	-	-	1/1/1/1	-
4	EDO	A	512	-	-	1/1/1/1	-
4	EDO	D	510	-	-	1/1/1/1	-
5	E3Q	D	517	-	-	2/15/46/46	0/4/4/4
4	EDO	A	506	-	-	1/1/1/1	-
5	E3Q	A	513	-	-	1/15/46/46	0/4/4/4
4	EDO	A	507	-	-	1/1/1/1	-
4	EDO	A	503	-	-	1/1/1/1	-
7	PEG	D	512	-	-	1/4/4/4	-
4	EDO	D	505	-	-	1/1/1/1	-
6	EPE	D	516	-	-	1/9/19/19	0/1/1/1
4	EDO	C	503	-	-	1/1/1/1	-
4	EDO	C	509	-	-	1/1/1/1	-
4	EDO	D	513	-	-	0/1/1/1	-
4	EDO	D	508	-	-	1/1/1/1	-
4	EDO	D	515	-	-	1/1/1/1	-
4	EDO	B	506	-	-	1/1/1/1	-
4	EDO	D	518	-	-	0/1/1/1	-
4	EDO	D	519	-	-	1/1/1/1	-
4	EDO	A	508	-	-	1/1/1/1	-
4	EDO	B	504	-	-	1/1/1/1	-
4	EDO	B	507	-	-	1/1/1/1	-
4	EDO	D	514	-	-	1/1/1/1	-
4	EDO	A	505	-	-	1/1/1/1	-
5	E3Q	B	509	-	-	3/15/46/46	0/4/4/4
4	EDO	D	507	-	-	1/1/1/1	-
4	EDO	D	506	-	-	0/1/1/1	-
4	EDO	A	511	-	-	0/1/1/1	-
4	EDO	A	510	-	-	0/1/1/1	-
7	PEG	D	511	-	-	3/4/4/4	-
4	EDO	B	505	-	-	0/1/1/1	-

Continued on next page...

Continued from previous page...

Mol	Type	Chain	Res	Link	Chirals	Torsions	Rings
4	EDO	C	508	-	-	1/1/1/1	-
4	EDO	D	509	-	-	0/1/1/1	-
4	EDO	D	504	-	-	1/1/1/1	-
4	EDO	B	503	-	-	1/1/1/1	-
6	EPE	B	508	-	-	6/9/19/19	0/1/1/1
4	EDO	C	506	-	-	1/1/1/1	-
4	EDO	D	520	-	-	1/1/1/1	-
5	E3Q	C	507	-	-	6/15/46/46	0/4/4/4
6	EPE	B	511	-	-	4/9/19/19	0/1/1/1
4	EDO	A	504	-	-	1/1/1/1	-
4	EDO	C	504	-	-	1/1/1/1	-
6	EPE	C	505	-	-	5/9/19/19	0/1/1/1
4	EDO	A	509	-	-	0/1/1/1	-
4	EDO	B	510	-	-	1/1/1/1	-

The worst 5 of 11 bond length outliers are listed below:

Mol	Chain	Res	Type	Atoms	Z	Observed(Å)	Ideal(Å)
6	B	508	EPE	C10-S	-10.46	1.62	1.77
6	C	505	EPE	C10-S	-8.76	1.65	1.77
6	D	516	EPE	C10-S	-7.18	1.67	1.77
6	B	511	EPE	C10-S	-6.81	1.67	1.77
5	A	513	E3Q	C25-C16	-6.80	1.42	1.53

The worst 5 of 33 bond angle outliers are listed below:

Mol	Chain	Res	Type	Atoms	Z	Observed(°)	Ideal(°)
6	D	516	EPE	O2S-S-C10	-17.83	85.45	106.92
6	D	516	EPE	O1S-S-C10	-16.22	87.38	106.92
6	D	516	EPE	O3S-S-C10	-11.34	87.43	105.77
6	B	511	EPE	O1S-S-C10	4.30	112.09	106.92
5	C	507	E3Q	C11-C16-N1	-4.26	113.30	119.65

There are no chirality outliers.

5 of 59 torsion outliers are listed below:

Mol	Chain	Res	Type	Atoms
6	C	505	EPE	C10-C9-N1-C2
6	C	505	EPE	C10-C9-N1-C6
6	C	505	EPE	C9-C10-S-O1S
6	B	508	EPE	C8-C7-N4-C3

Continued on next page...

Continued from previous page...

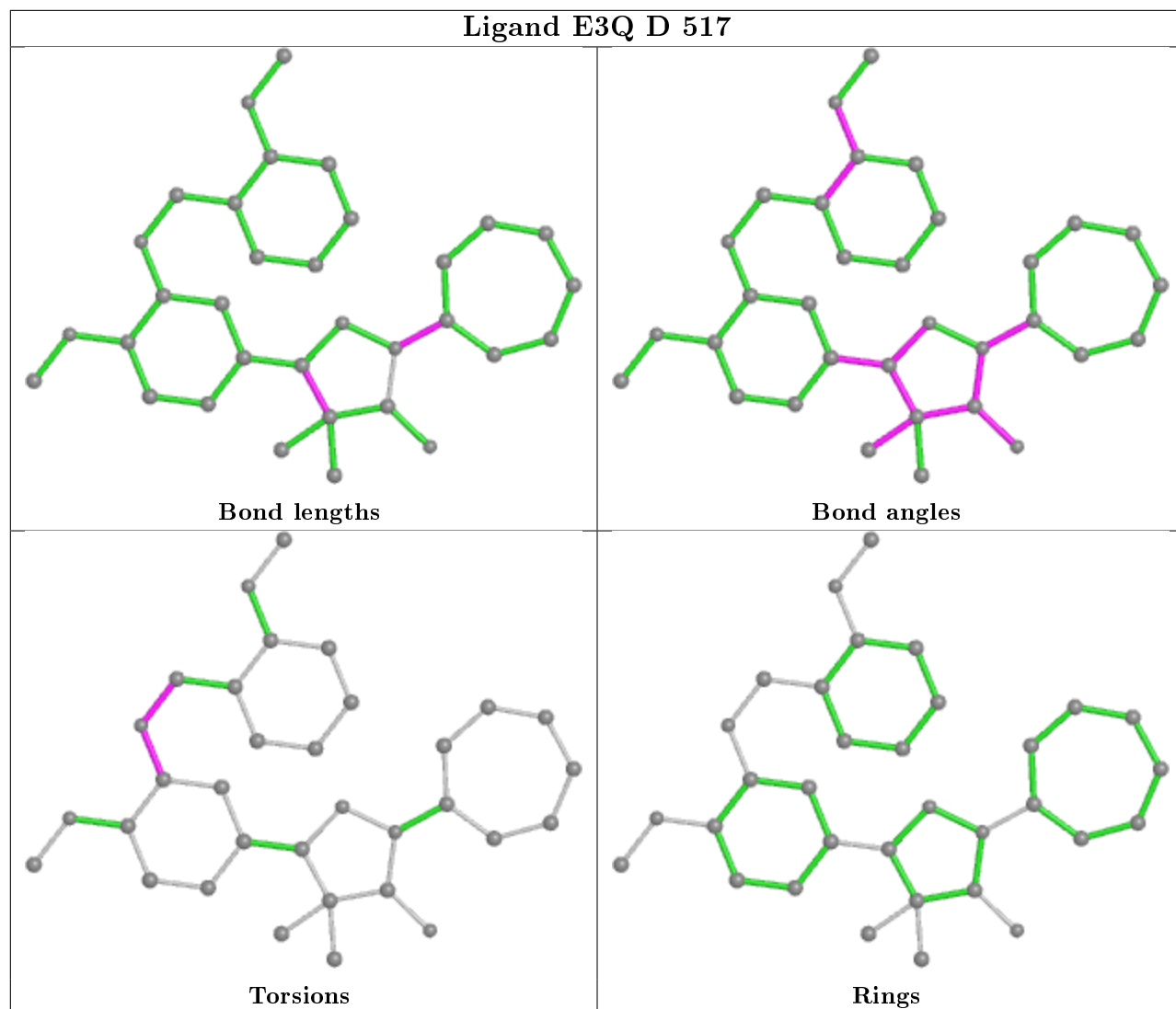
Mol	Chain	Res	Type	Atoms
6	B	508	EPE	S-C10-C9-N1

There are no ring outliers.

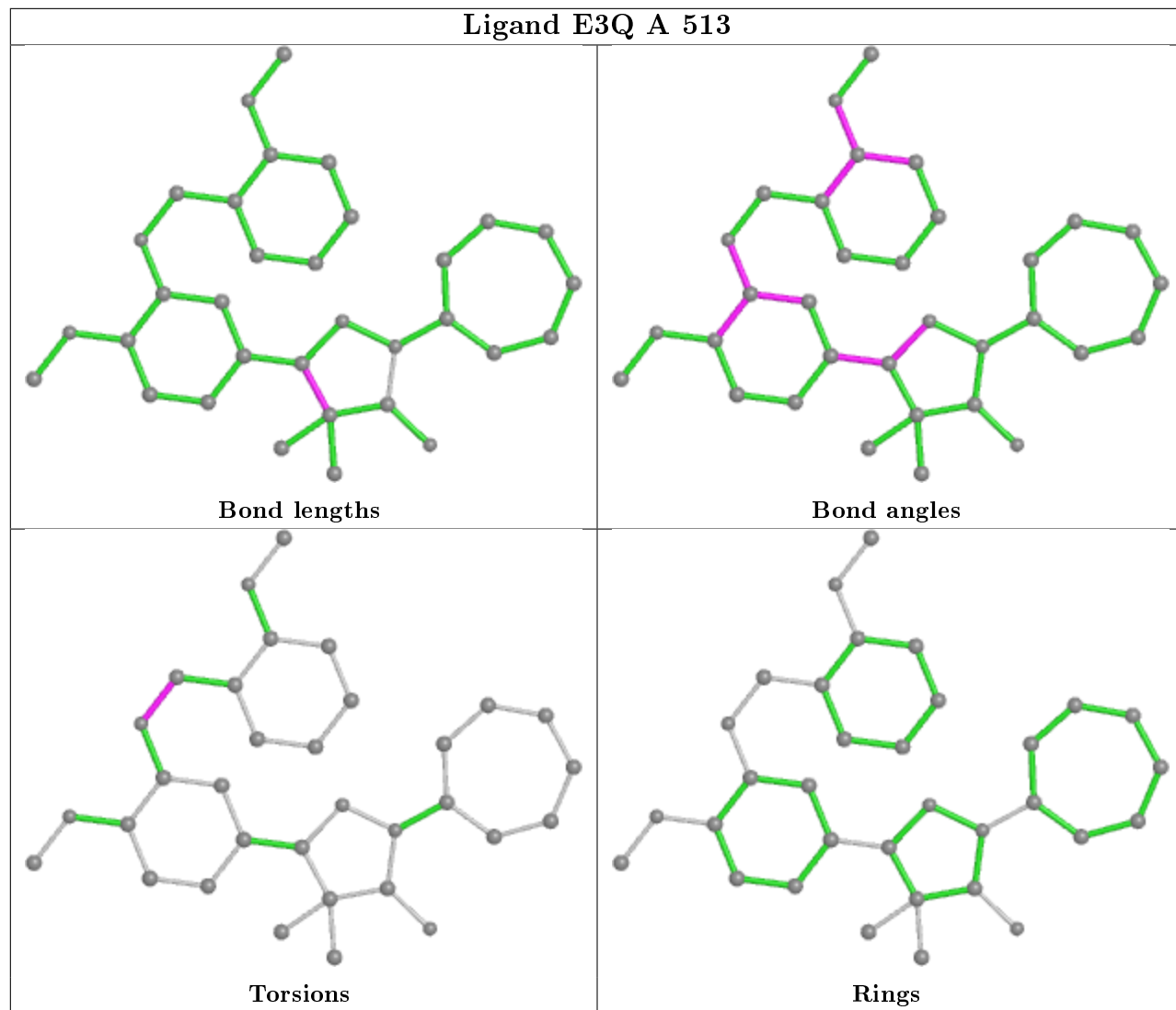
14 monomers are involved in 24 short contacts:

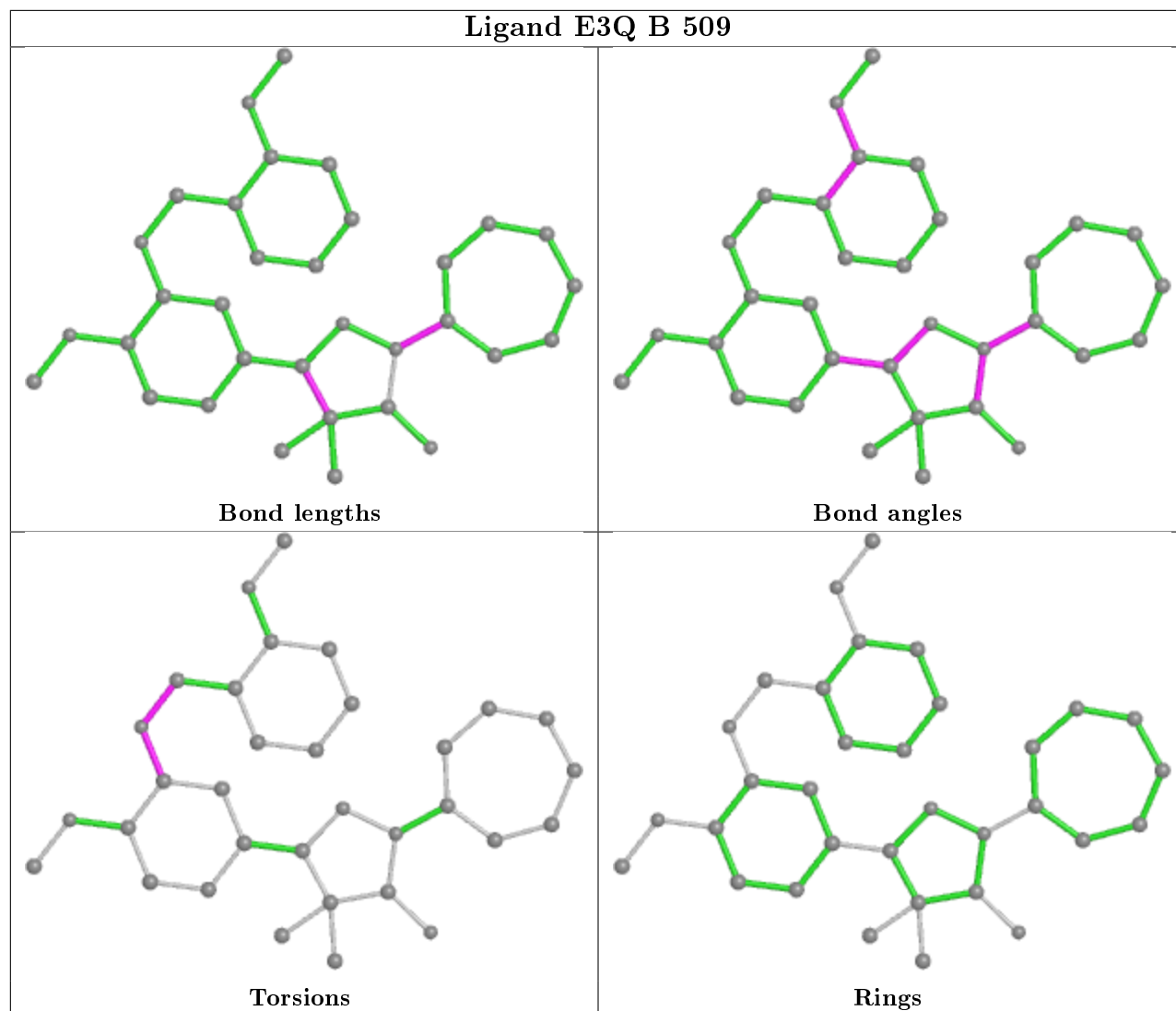
Mol	Chain	Res	Type	Clashes	Symm-Clashes
4	D	503	EDO	1	0
4	A	512	EDO	1	0
5	D	517	E3Q	1	0
5	A	513	E3Q	2	0
7	D	512	PEG	2	0
4	D	505	EDO	3	0
6	D	516	EPE	1	0
4	D	515	EDO	3	0
4	D	518	EDO	1	0
5	B	509	E3Q	1	0
7	D	511	PEG	1	0
4	D	509	EDO	1	0
6	B	508	EPE	3	0
4	B	510	EDO	3	0

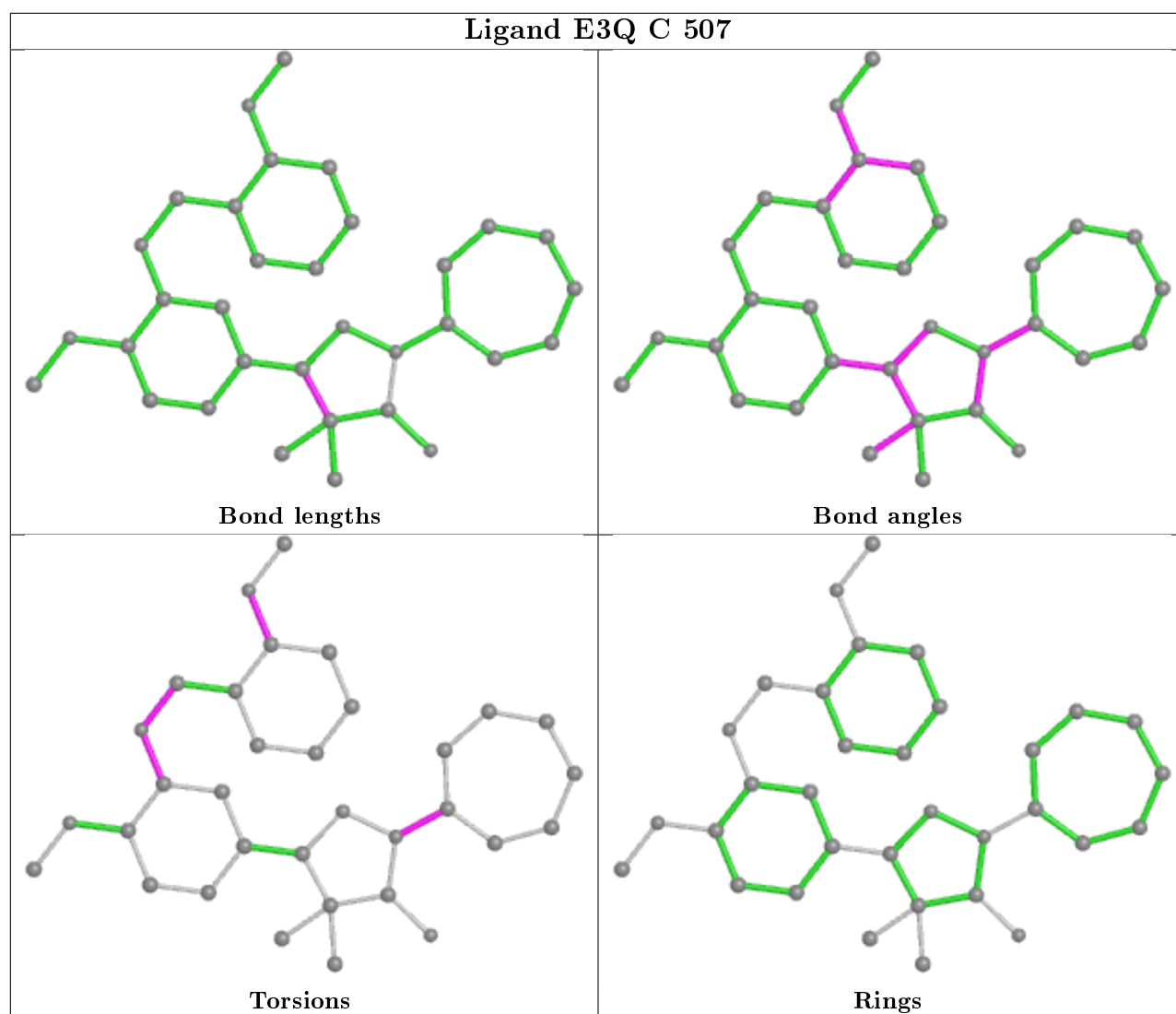
The following is a two-dimensional graphical depiction of Mogul quality analysis of bond lengths, bond angles, torsion angles, and ring geometry for all instances of the Ligand of Interest. In addition, ligands with molecular weight > 250 and outliers as shown on the validation Tables will also be included. For torsion angles, if less than 5% of the Mogul distribution of torsion angles is within 10 degrees of the torsion angle in question, then that torsion angle is considered an outlier. Any bond that is central to one or more torsion angles identified as an outlier by Mogul will be highlighted in the graph. For rings, the root-mean-square deviation (RMSD) between the ring in question and similar rings identified by Mogul is calculated over all ring torsion angles. If the average RMSD is greater than 60 degrees and the minimal RMSD between the ring in question and any Mogul-identified rings is also greater than 60 degrees, then that ring is considered an outlier. The outliers are highlighted in purple. The color gray indicates Mogul did not find sufficient equivalents in the CSD to analyse the geometry.



Ligand E3Q A 513







5.7 Other polymers [\(i\)](#)

There are no such residues in this entry.

5.8 Polymer linkage issues [\(i\)](#)

There are no chain breaks in this entry.

6 Fit of model and data [i](#)

6.1 Protein, DNA and RNA chains [i](#)

In the following table, the column labelled ‘#RSRZ> 2’ contains the number (and percentage) of RSRZ outliers, followed by percent RSRZ outliers for the chain as percentile scores relative to all X-ray entries and entries of similar resolution. The OWAB column contains the minimum, median, 95th percentile and maximum values of the occupancy-weighted average B-factor per residue. The column labelled ‘Q< 0.9’ lists the number of (and percentage) of residues with an average occupancy less than 0.9.

Mol	Chain	Analysed	<RSRZ>	#RSRZ>2	OWAB(Å ²)	Q<0.9
1	A	329/364 (90%)	0.18	19 (5%) 23 22	19, 34, 71, 104	13 (3%)
1	B	324/364 (89%)	-0.07	1 (0%) 94 93	21, 37, 57, 88	0
1	C	323/364 (88%)	0.13	12 (3%) 41 41	21, 36, 71, 93	11 (3%)
1	D	324/364 (89%)	-0.06	3 (0%) 84 83	19, 28, 58, 98	0
All	All	1300/1456 (89%)	0.05	35 (2%) 54 53	19, 34, 65, 104	24 (1%)

The worst 5 of 35 RSRZ outliers are listed below:

Mol	Chain	Res	Type	RSRZ
1	C	358	CYS	12.3
1	A	357	MET	9.6
1	A	362	ASN	8.6
1	C	357	MET	7.0
1	A	352	MET	6.6

6.2 Non-standard residues in protein, DNA, RNA chains [i](#)

There are no non-standard protein/DNA/RNA residues in this entry.

6.3 Carbohydrates [i](#)

There are no carbohydrates in this entry.

6.4 Ligands [i](#)

In the following table, the Atoms column lists the number of modelled atoms in the group and the number defined in the chemical component dictionary. The B-factors column lists the minimum, median, 95th percentile and maximum values of B factors of atoms in the group. The column labelled ‘Q< 0.9’ lists the number of atoms with occupancy less than 0.9.

Mol	Type	Chain	Res	Atoms	RSCC	RSR	B-factors(Å ²)	Q<0.9
4	EDO	C	508	4/4	0.69	0.18	53,53,53,62	0
4	EDO	D	506	4/4	0.71	0.25	74,77,78,80	0
5	E3Q	A	513	33/33	0.72	0.48	64,92,101,103	0
4	EDO	D	519	4/4	0.73	0.15	48,51,54,63	0
5	E3Q	B	509	33/33	0.79	0.24	39,59,81,89	0
4	EDO	C	504	4/4	0.80	0.23	56,56,57,61	0
4	EDO	A	508	4/4	0.83	0.15	58,63,63,70	0
4	EDO	D	513	4/4	0.83	0.20	55,56,60,61	0
4	EDO	D	507	4/4	0.83	0.23	34,42,45,46	0
4	EDO	B	504	4/4	0.84	0.26	53,54,54,61	0
5	E3Q	D	517	33/33	0.85	0.29	48,59,85,93	0
4	EDO	D	520	4/4	0.85	0.16	61,61,62,65	0
5	E3Q	C	507	33/33	0.85	0.29	52,64,83,85	0
4	EDO	D	515	4/4	0.85	0.16	41,44,44,46	0
4	EDO	D	509	4/4	0.87	0.25	44,51,57,67	0
4	EDO	A	507	4/4	0.87	0.15	57,57,57,58	0
7	PEG	D	512	7/7	0.87	0.18	32,35,42,47	0
4	EDO	A	504	4/4	0.88	0.21	32,44,46,47	0
4	EDO	C	506	4/4	0.88	0.18	50,52,55,56	0
4	EDO	A	510	4/4	0.89	0.19	32,40,40,50	0
4	EDO	B	505	4/4	0.89	0.27	50,52,54,61	0
6	EPE	B	511	15/15	0.89	0.27	62,72,78,78	0
4	EDO	A	506	4/4	0.89	0.15	45,49,50,62	0
4	EDO	B	506	4/4	0.89	0.20	58,59,60,61	0
4	EDO	B	510	4/4	0.89	0.20	40,42,46,56	0
4	EDO	A	512	4/4	0.90	0.26	62,74,80,87	0
4	EDO	A	503	4/4	0.90	0.19	50,55,60,72	0
4	EDO	D	508	4/4	0.90	0.22	61,64,65,67	0
4	EDO	D	505	4/4	0.91	0.20	44,46,48,49	0
4	EDO	A	511	4/4	0.91	0.17	53,54,54,55	0
4	EDO	C	509	4/4	0.92	0.17	53,55,55,59	0
4	EDO	D	503	4/4	0.92	0.21	52,52,58,61	0
4	EDO	D	514	4/4	0.92	0.14	50,56,60,63	0
7	PEG	D	511	7/7	0.92	0.25	39,40,44,46	0
4	EDO	D	518	4/4	0.92	0.24	41,46,50,54	0
4	EDO	D	510	4/4	0.92	0.14	38,44,44,47	0
4	EDO	B	503	4/4	0.92	0.13	48,53,55,57	0
4	EDO	A	509	4/4	0.93	0.18	35,35,38,41	0
4	EDO	C	503	4/4	0.93	0.13	45,45,46,46	0
4	EDO	A	505	4/4	0.94	0.13	34,34,34,35	0
4	EDO	B	507	4/4	0.94	0.11	55,56,57,58	0
6	EPE	B	508	15/15	0.95	0.16	45,79,87,89	0
4	EDO	D	504	4/4	0.95	0.12	34,36,38,41	0

Continued on next page...

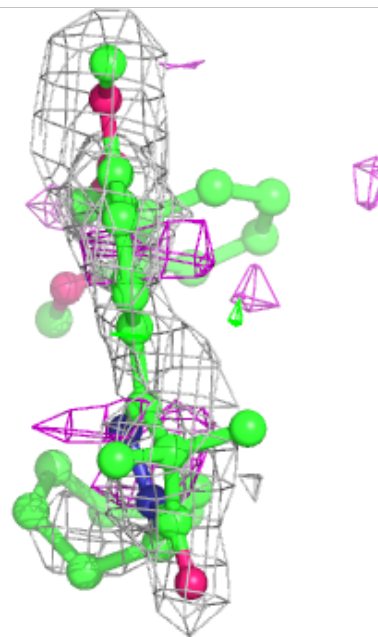
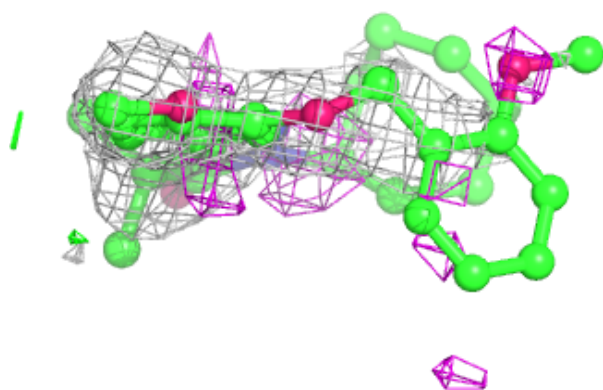
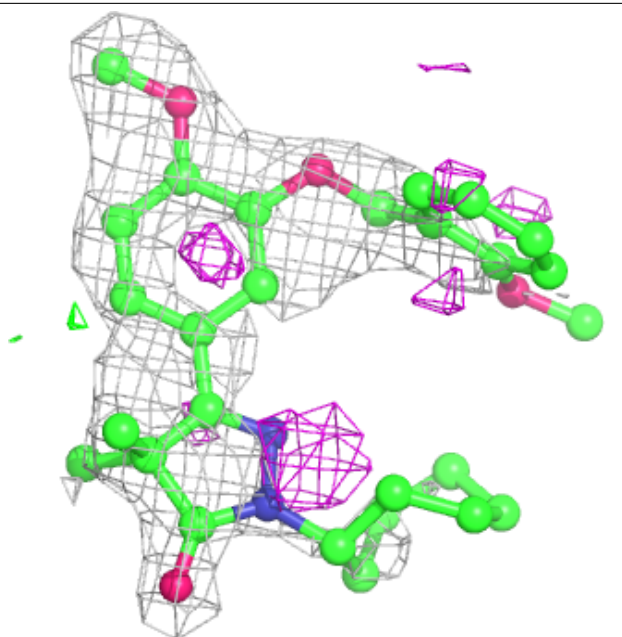
Continued from previous page...

Mol	Type	Chain	Res	Atoms	RSCC	RSR	B-factors(Å²)	Q<0.9
6	EPE	D	516	15/15	0.95	0.17	37,69,85,88	0
6	EPE	C	505	15/15	0.97	0.20	37,50,67,74	0
3	MG	A	502	1/1	0.97	0.13	19,19,19,19	0
3	MG	B	502	1/1	0.98	0.09	17,17,17,17	0
3	MG	C	502	1/1	0.98	0.08	17,17,17,17	0
2	ZN	B	501	1/1	0.99	0.09	31,31,31,31	0
2	ZN	C	501	1/1	1.00	0.09	31,31,31,31	0
2	ZN	A	501	1/1	1.00	0.12	29,29,29,29	0
3	MG	D	502	1/1	1.00	0.07	15,15,15,15	0
2	ZN	D	501	1/1	1.00	0.11	26,26,26,26	0

The following is a graphical depiction of the model fit to experimental electron density of all instances of the Ligand of Interest. In addition, ligands with molecular weight > 250 and outliers as shown on the geometry validation Tables will also be included. Each fit is shown from different orientation to approximate a three-dimensional view.

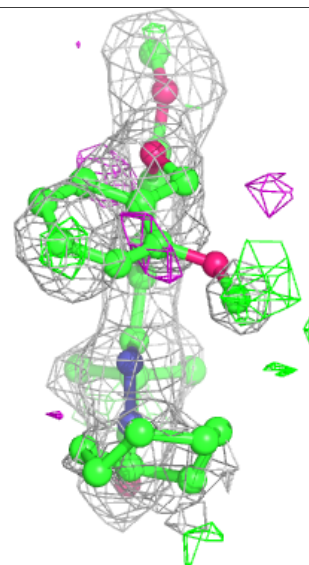
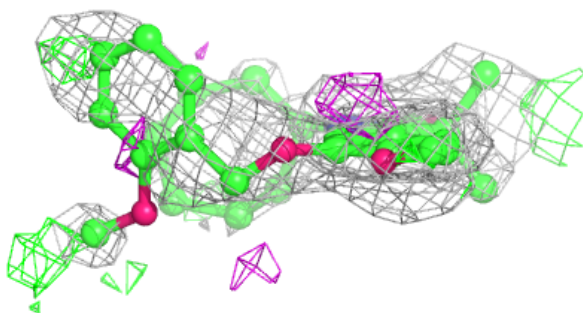
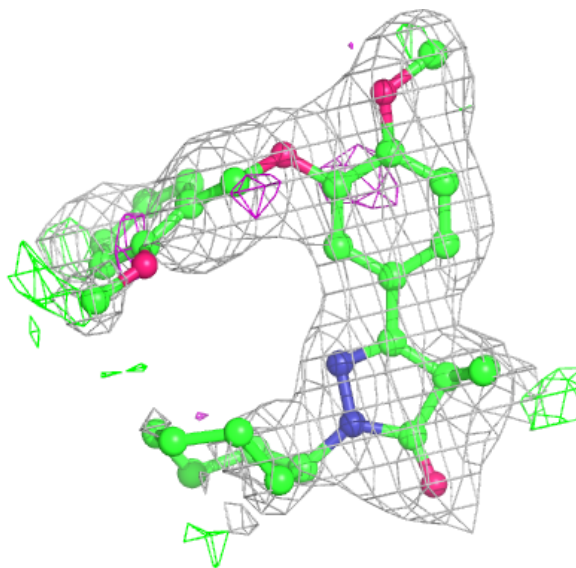
Electron density around E3Q A 513:

$2mF_o-DF_c$ (at 0.7 rmsd) in gray
 mF_o-DF_c (at 3 rmsd) in purple (negative)
and green (positive)



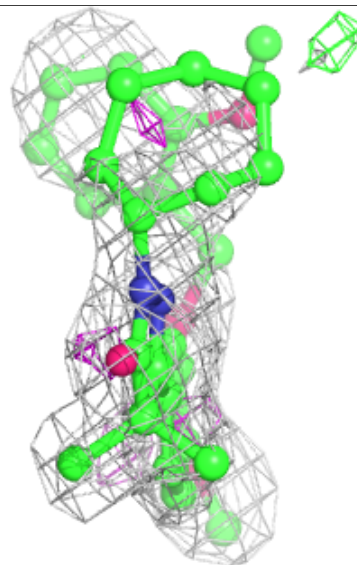
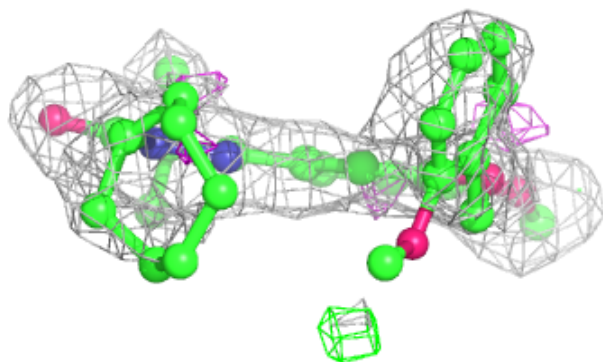
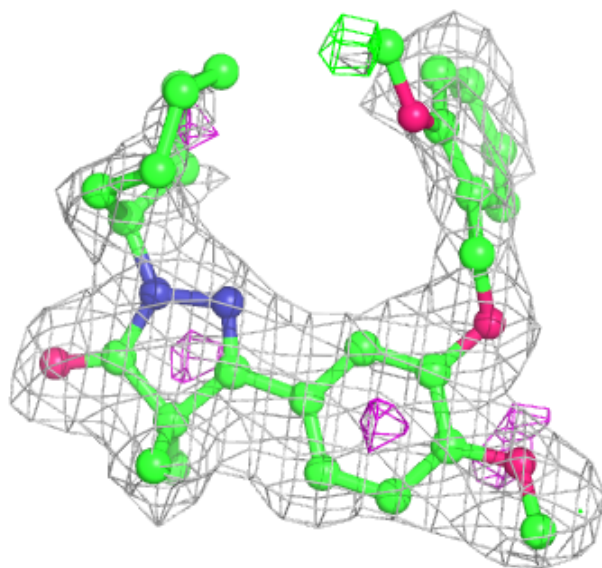
Electron density around E3Q B 509:

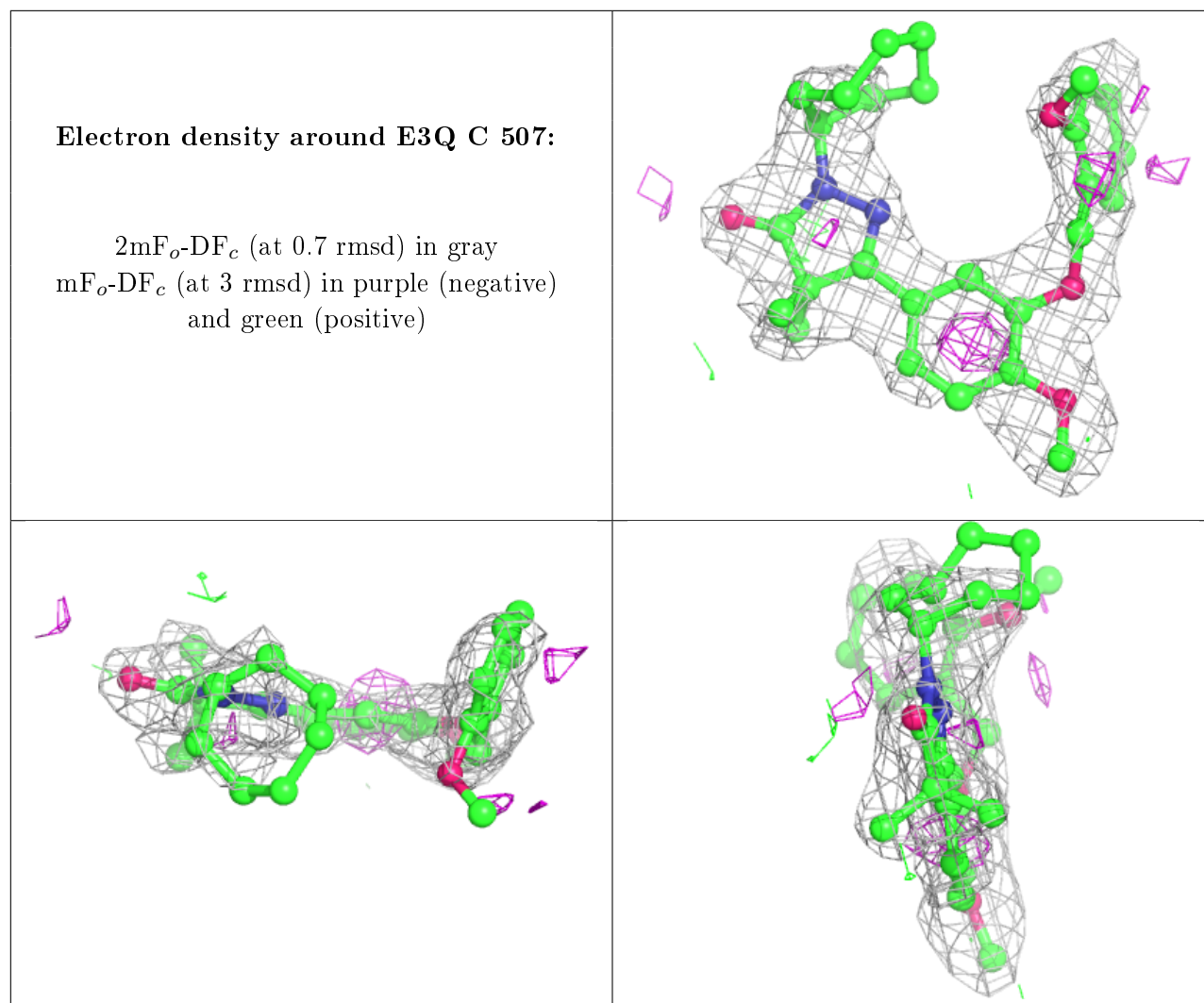
$2mF_o-DF_c$ (at 0.7 rmsd) in gray
 mF_o-DF_c (at 3 rmsd) in purple (negative)
and green (positive)



Electron density around E3Q D 517:

$2mF_o-DF_c$ (at 0.7 rmsd) in gray
 mF_o-DF_c (at 3 rmsd) in purple (negative)
and green (positive)





6.5 Other polymers [i](#)

There are no such residues in this entry.