



wwPDB X-ray Structure Validation Summary Report ⓘ

Aug 6, 2020 – 02:34 PM BST

PDB ID : 6G95
Title : Crystal structure of Ebolavirus glycoprotein in complex with thioridazine
Authors : Zhao, Y.; Ren, J.; Fry, E.E.; Xiao, J.; Townsend, A.R.; Stuart, D.I.
Deposited on : 2018-04-10
Resolution : 2.31 Å(reported)

This is a wwPDB X-ray Structure Validation Summary Report for a publicly released PDB entry.

We welcome your comments at validation@mail.wwpdb.org

A user guide is available at

<https://www.wwpdb.org/validation/2017/XrayValidationReportHelp>

with specific help available everywhere you see the ⓘ symbol.

The following versions of software and data (see [references ⓘ](#)) were used in the production of this report:

MolProbity : 4.02b-467
Mogul : 1.8.5 (274361), CSD as541be (2020)
Xtriage (Phenix) : 1.13
EDS : 2.13.1
buster-report : 1.1.7 (2018)
Percentile statistics : 20191225.v01 (using entries in the PDB archive December 25th 2019)
Refmac : 5.8.0158
CCP4 : 7.0.044 (Gargrove)
Ideal geometry (proteins) : Engh & Huber (2001)
Ideal geometry (DNA, RNA) : Parkinson et al. (1996)
Validation Pipeline (wwPDB-VP) : 2.13.1

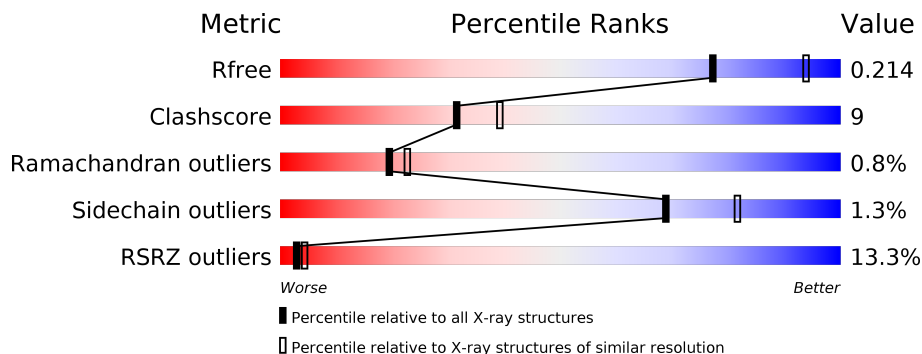
1 Overall quality at a glance

The following experimental techniques were used to determine the structure:

X-RAY DIFFRACTION

The reported resolution of this entry is 2.31 Å.

Percentile scores (ranging between 0-100) for global validation metrics of the entry are shown in the following graphic. The table shows the number of entries on which the scores are based.



Metric	Whole archive (#Entries)	Similar resolution (#Entries, resolution range(Å))
R_{free}	130704	5974 (2.34-2.30)
Clashscore	141614	6604 (2.34-2.30)
Ramachandran outliers	138981	6523 (2.34-2.30)
Sidechain outliers	138945	6523 (2.34-2.30)
RSRZ outliers	127900	5855 (2.34-2.30)

The table below summarises the geometric issues observed across the polymeric chains and their fit to the electron density. The red, orange, yellow and green segments on the lower bar indicate the fraction of residues that contain outliers for ≥ 3 , 2, 1 and 0 types of geometric quality criteria respectively. A grey segment represents the fraction of residues that are not modelled. The numeric value for each fraction is indicated below the corresponding segment, with a dot representing fractions $\leq 5\%$. The upper red bar (where present) indicates the fraction of residues that have poor fit to the electron density. The numeric value is given above the bar.

Mol	Chain	Length	Quality of chain
1	A	330	 9% 65% 11% 23%
2	B	168	 12% 61% 16% 23%
3	C	4	 25% 75%

2 Entry composition [i](#)

There are 8 unique types of molecules in this entry. The entry contains 3321 atoms, of which 0 are hydrogens and 0 are deuteriums.

In the tables below, the ZeroOcc column contains the number of atoms modelled with zero occupancy, the AltConf column contains the number of residues with at least one atom in alternate conformation and the Trace column contains the number of residues modelled with at most 2 atoms.

- Molecule 1 is a protein called Envelope glycoprotein.

Mol	Chain	Residues	Atoms					ZeroOcc	AltConf	Trace
			Total	C	N	O	S			
1	A	254	2027	1292	339	391	5	0	7	0

There are 51 discrepancies between the modelled and reference sequences:

Chain	Residue	Modelled	Actual	Comment	Reference
A	28	GLU	-	expression tag	UNP Q05320
A	29	THR	-	expression tag	UNP Q05320
A	30	GLY	-	expression tag	UNP Q05320
A	31	ARG	-	expression tag	UNP Q05320
A	42	ALA	THR	engineered mutation	UNP Q05320
A	471	UNK	-	expression tag	UNP Q05320
A	472	UNK	-	expression tag	UNP Q05320
A	473	UNK	-	expression tag	UNP Q05320
A	474	UNK	-	expression tag	UNP Q05320
A	475	UNK	-	expression tag	UNP Q05320
A	476	UNK	-	expression tag	UNP Q05320
A	477	UNK	-	expression tag	UNP Q05320
A	478	SER	-	expression tag	UNP Q05320
A	479	THR	-	expression tag	UNP Q05320
A	480	HIS	-	expression tag	UNP Q05320
A	481	HIS	-	expression tag	UNP Q05320
A	482	GLN	-	expression tag	UNP Q05320
A	483	ASP	-	expression tag	UNP Q05320
A	484	THR	-	expression tag	UNP Q05320
A	485	GLY	-	expression tag	UNP Q05320
A	486	GLU	-	expression tag	UNP Q05320
A	487	GLU	-	expression tag	UNP Q05320
A	488	SER	-	expression tag	UNP Q05320
A	489	ALA	-	expression tag	UNP Q05320
A	490	SER	-	expression tag	UNP Q05320
A	491	SER	-	expression tag	UNP Q05320
A	492	GLY	-	expression tag	UNP Q05320

Continued on next page...

Continued from previous page...

Chain	Residue	Modelled	Actual	Comment	Reference
A	493	LYS	-	expression tag	UNP Q05320
A	494	LEU	-	expression tag	UNP Q05320
A	495	GLY	-	expression tag	UNP Q05320
A	496	LEU	-	expression tag	UNP Q05320
A	497	ILE	-	expression tag	UNP Q05320
A	498	THR	-	expression tag	UNP Q05320
A	499	ASN	-	expression tag	UNP Q05320
A	500	THR	-	expression tag	UNP Q05320
A	501	ILE	-	expression tag	UNP Q05320
A	502	ALA	-	expression tag	UNP Q05320
A	503	GLY	-	expression tag	UNP Q05320
A	504	VAL	-	expression tag	UNP Q05320
A	505	ALA	-	expression tag	UNP Q05320
A	506	GLY	-	expression tag	UNP Q05320
A	507	LEU	-	expression tag	UNP Q05320
A	508	ILE	-	expression tag	UNP Q05320
A	509	THR	-	expression tag	UNP Q05320
A	510	GLY	-	expression tag	UNP Q05320
A	511	GLY	-	expression tag	UNP Q05320
A	512	ARG	-	expression tag	UNP Q05320
A	513	ARG	-	expression tag	UNP Q05320
A	514	THR	-	expression tag	UNP Q05320
A	515	ARG	-	expression tag	UNP Q05320
A	516	ARG	-	expression tag	UNP Q05320

- Molecule 2 is a protein called Envelope glycoprotein.

Mol	Chain	Residues	Atoms					ZeroOcc	AltConf	Trace
			Total	C	N	O	S			
2	B	130	1033	660	177	190	6	0	1	0

There are 38 discrepancies between the modelled and reference sequences:

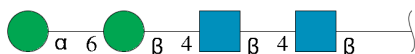
Chain	Residue	Modelled	Actual	Comment	Reference
B	613	ALA	HIS	engineered mutation	UNP Q05320
B	633	GLY	-	expression tag	UNP Q05320
B	634	SER	-	expression tag	UNP Q05320
B	635	GLY	-	expression tag	UNP Q05320
B	636	TYR	-	expression tag	UNP Q05320
B	637	ILE	-	expression tag	UNP Q05320
B	638	PRO	-	expression tag	UNP Q05320
B	639	GLU	-	expression tag	UNP Q05320

Continued on next page...

Continued from previous page...

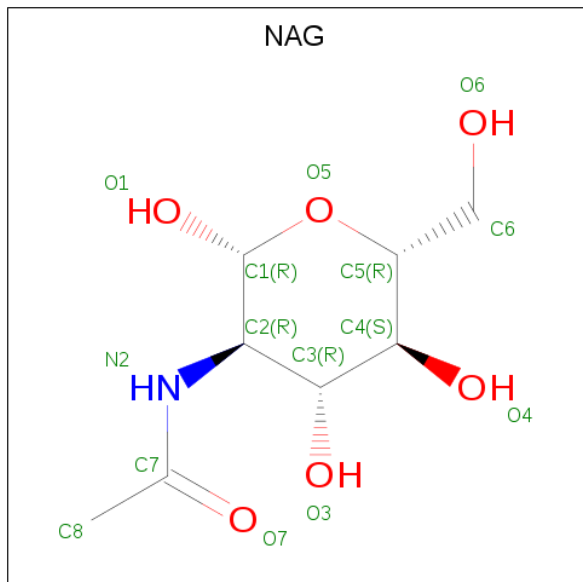
Chain	Residue	Modelled	Actual	Comment	Reference
B	640	ALA	-	expression tag	UNP Q05320
B	641	PRO	-	expression tag	UNP Q05320
B	642	ARG	-	expression tag	UNP Q05320
B	643	ASP	-	expression tag	UNP Q05320
B	644	GLY	-	expression tag	UNP Q05320
B	645	GLN	-	expression tag	UNP Q05320
B	646	ALA	-	expression tag	UNP Q05320
B	647	TYR	-	expression tag	UNP Q05320
B	648	VAL	-	expression tag	UNP Q05320
B	649	ARG	-	expression tag	UNP Q05320
B	650	LYS	-	expression tag	UNP Q05320
B	651	ASP	-	expression tag	UNP Q05320
B	652	GLY	-	expression tag	UNP Q05320
B	653	GLU	-	expression tag	UNP Q05320
B	654	TRP	-	expression tag	UNP Q05320
B	655	VAL	-	expression tag	UNP Q05320
B	656	LEU	-	expression tag	UNP Q05320
B	657	LEU	-	expression tag	UNP Q05320
B	658	SER	-	expression tag	UNP Q05320
B	659	THR	-	expression tag	UNP Q05320
B	660	PHE	-	expression tag	UNP Q05320
B	661	LEU	-	expression tag	UNP Q05320
B	662	GLY	-	expression tag	UNP Q05320
B	663	THR	-	expression tag	UNP Q05320
B	664	HIS	-	expression tag	UNP Q05320
B	665	HIS	-	expression tag	UNP Q05320
B	666	HIS	-	expression tag	UNP Q05320
B	667	HIS	-	expression tag	UNP Q05320
B	668	HIS	-	expression tag	UNP Q05320
B	669	HIS	-	expression tag	UNP Q05320

- Molecule 3 is an oligosaccharide called alpha-D-mannopyranose-(1-6)-beta-D-mannopyranose-(1-4)-2-acetamido-2-deoxy-beta-D-glucopyranose-(1-4)-2-acetamido-2-deoxy-beta-D-glucopyranose.



Mol	Chain	Residues	Atoms			ZeroOcc	AltConf	Trace	
			Total	C	N				O
3	C	4	50	28	2	20	0	0	0

- Molecule 4 is 2-acetamido-2-deoxy-beta-D-glucopyranose (three-letter code: NAG) (formula: $C_8H_{15}NO_6$).



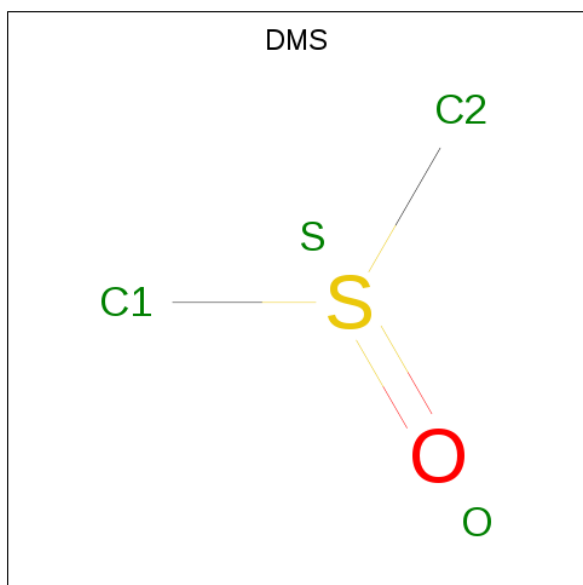
Mol	Chain	Residues	Atoms				ZeroOcc	AltConf
			Total	C	N	O		
4	A	1	Total	C	N	O	0	0
			14	8	1	5		
4	A	1	Total	C	N	O	0	0
			14	8	1	5		
4	A	1	Total	C	N	O	0	0
			14	8	1	5		
4	A	1	Total	C	N	O	0	0
			14	8	1	5		

- Molecule 5 is GLYCEROL (three-letter code: GOL) (formula: $C_3H_8O_3$).



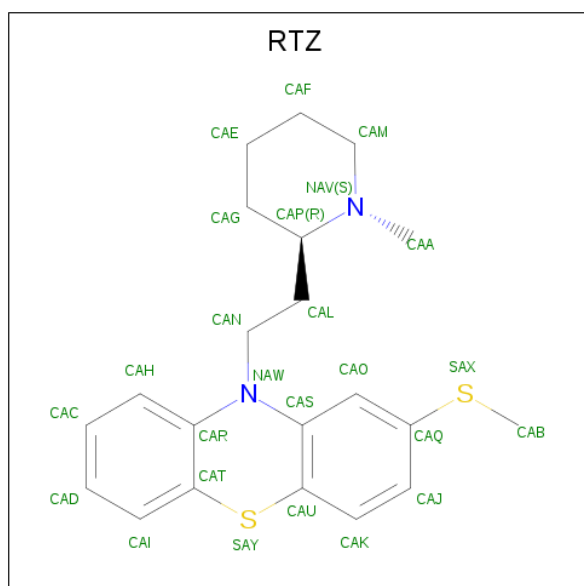
Mol	Chain	Residues	Atoms	ZeroOcc	AltConf
5	A	1	Total C O 6 3 3	0	0
5	A	1	Total C O 6 3 3	0	0
5	B	1	Total C O 6 3 3	0	0
5	B	1	Total C O 6 3 3	0	0

- Molecule 6 is DIMETHYL SULFOXIDE (three-letter code: DMS) (formula: C₂H₆OS).



Mol	Chain	Residues	Atoms				ZeroOcc	AltConf
6	A	1	Total	C	O	S	0	0
			4	2	1	1		
6	A	1	Total	C	O	S	0	0
			4	2	1	1		
6	B	1	Total	C	O	S	0	0
			4	2	1	1		

- Molecule 7 is 10-{2-[(2R)-1-methylpiperidin-2-yl]ethyl}-2-(methylsulfanyl)-10H-phenothiazine (three-letter code: RTZ) (formula: C₂₁H₂₆N₂S₂) (labeled as "Ligand of Interest" by author).



Mol	Chain	Residues	Atoms				ZeroOcc	AltConf
7	B	1	Total	C	N	S	0	0
			25	21	2	2		

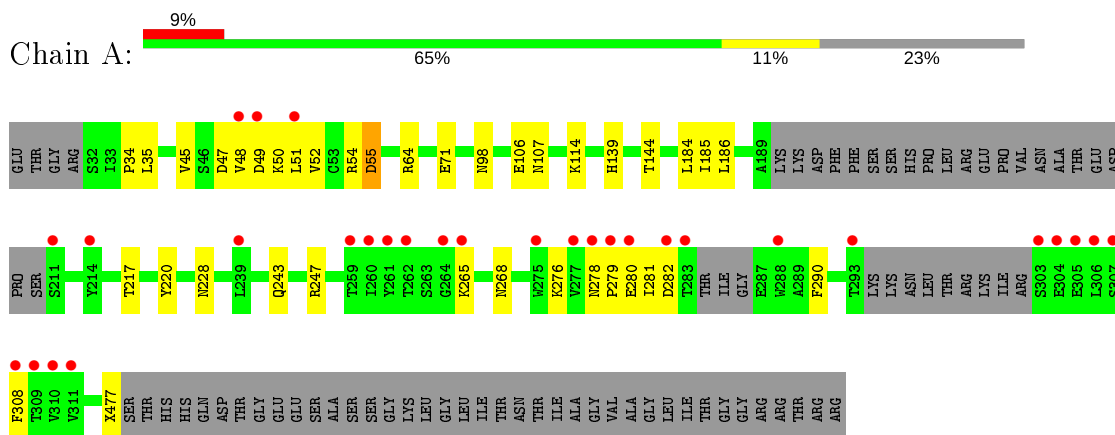
- Molecule 8 is water.

Mol	Chain	Residues	Atoms		ZeroOcc	AltConf
8	A	56	Total	O	0	0
			56	56		
8	B	38	Total	O	0	0
			38	38		

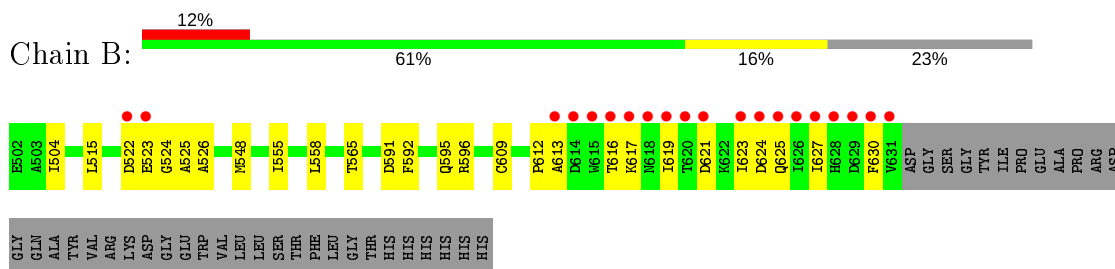
3 Residue-property plots [i](#)

These plots are drawn for all protein, RNA, DNA and oligosaccharide chains in the entry. The first graphic for a chain summarises the proportions of the various outlier classes displayed in the second graphic. The second graphic shows the sequence view annotated by issues in geometry and electron density. Residues are color-coded according to the number of geometric quality criteria for which they contain at least one outlier: green = 0, yellow = 1, orange = 2 and red = 3 or more. A red dot above a residue indicates a poor fit to the electron density ($RSRZ > 2$). Stretches of 2 or more consecutive residues without any outlier are shown as a green connector. Residues present in the sample, but not in the model, are shown in grey.

- Molecule 1: Envelope glycoprotein



- Molecule 2: Envelope glycoprotein



- Molecule 3: alpha-D-mannopyranose-(1-6)-beta-D-mannopyranose-(1-4)-2-acetamido-2-deoxy-beta-D-glucopyranose-(1-4)-2-acetamido-2-deoxy-beta-D-glucopyranose



4 Data and refinement statistics

Property	Value	Source
Space group	H 3 2	Depositor
Cell constants a, b, c, α , β , γ	113.97Å 113.97Å 305.66Å 90.00° 90.00° 120.00°	Depositor
Resolution (Å)	51.97 – 2.31 82.91 – 2.31	Depositor EDS
% Data completeness (in resolution range)	99.8 (51.97-2.31) 99.8 (82.91-2.31)	Depositor EDS
R_{merge}	0.08	Depositor
R_{sym}	(Not available)	Depositor
$\langle I/\sigma(I) \rangle$ ¹	1.89 (at 2.32Å)	Xtrriage
Refinement program	PHENIX (1.13_2998: ???)	Depositor
R, R_{free}	0.184 , 0.211 0.186 , 0.214	Depositor DCC
R_{free} test set	1652 reflections (4.87%)	wwPDB-VP
Wilson B-factor (Å ²)	59.2	Xtrriage
Anisotropy	0.413	Xtrriage
Bulk solvent k_{sol} (e/Å ³), B_{sol} (Å ²)	0.32 , 63.7	EDS
L-test for twinning ²	$\langle L \rangle = 0.50$, $\langle L^2 \rangle = 0.34$	Xtrriage
Estimated twinning fraction	No twinning to report.	Xtrriage
F_o, F_c correlation	0.96	EDS
Total number of atoms	3321	wwPDB-VP
Average B, all atoms (Å ²)	86.0	wwPDB-VP

Xtrriage's analysis on translational NCS is as follows: *The largest off-origin peak in the Patterson function is 3.05% of the height of the origin peak. No significant pseudotranslation is detected.*

¹Intensities estimated from amplitudes.

²Theoretical values of $\langle |L| \rangle$, $\langle L^2 \rangle$ for acentric reflections are 0.5, 0.333 respectively for untwinned datasets, and 0.375, 0.2 for perfectly twinned datasets.

5 Model quality

5.1 Standard geometry

Bond lengths and bond angles in the following residue types are not validated in this section: GOL, BMA, NAG, DMS, RTZ, MAN

The Z score for a bond length (or angle) is the number of standard deviations the observed value is removed from the expected value. A bond length (or angle) with $|Z| > 5$ is considered an outlier worth inspection. RMSZ is the root-mean-square of all Z scores of the bond lengths (or angles).

Mol	Chain	Bond lengths		Bond angles	
		RMSZ	# Z >5	RMSZ	# Z >5
1	A	0.36	0/2038	0.53	0/2769
2	B	0.35	0/1061	0.47	0/1446
All	All	0.36	0/3099	0.51	0/4215

There are no bond length outliers.

There are no bond angle outliers.

There are no chirality outliers.

There are no planarity outliers.

5.2 Too-close contacts

In the following table, the Non-H and H(model) columns list the number of non-hydrogen atoms and hydrogen atoms in the chain respectively. The H(added) column lists the number of hydrogen atoms added and optimized by MolProbity. The Clashes column lists the number of clashes within the asymmetric unit, whereas Symm-Clashes lists symmetry related clashes.

Mol	Chain	Non-H	H(model)	H(added)	Clashes	Symm-Clashes
1	A	2027	0	1933	36	0
2	B	1033	0	1005	33	0
3	C	50	0	43	0	0
4	A	56	0	52	2	0
5	A	12	0	16	3	0
5	B	12	0	16	0	0
6	A	8	0	12	0	0
6	B	4	0	6	0	0
7	B	25	0	26	4	0
8	A	56	0	0	0	0
8	B	38	0	0	2	0
All	All	3321	0	3109	57	0

The all-atom clashscore is defined as the number of clashes found per 1000 atoms (including hydrogen atoms). The all-atom clashscore for this structure is 9.

The worst 5 of 57 close contacts within the same asymmetric unit are listed below, sorted by their clash magnitude.

Atom-1	Atom-2	Interatomic distance (Å)	Clash overlap (Å)
1:A:45:VAL:HG23	2:B:504:ILE:HD11	1.39	1.03
1:A:49[B]:ASP:HA	2:B:595:GLN:HG2	1.58	0.84
1:A:106:GLU:HG3	1:A:290:PHE:CD1	2.13	0.82
2:B:623:ILE:O	2:B:627:ILE:HG22	1.80	0.81
1:A:45:VAL:CG2	2:B:504:ILE:HD11	2.14	0.77

There are no symmetry-related clashes.

5.3 Torsion angles [i](#)

5.3.1 Protein backbone [i](#)

In the following table, the Percentiles column shows the percent Ramachandran outliers of the chain as a percentile score with respect to all X-ray entries followed by that with respect to entries of similar resolution.

The Analysed column shows the number of residues for which the backbone conformation was analysed, and the total number of residues.

Mol	Chain	Analysed	Favoured	Allowed	Outliers	Percentiles	
1	A	246/330 (74%)	242 (98%)	4 (2%)	0	100	100
2	B	129/168 (77%)	121 (94%)	5 (4%)	3 (2%)	6	4
All	All	375/498 (75%)	363 (97%)	9 (2%)	3 (1%)	19	23

All (3) Ramachandran outliers are listed below:

Mol	Chain	Res	Type
2	B	525	ALA
2	B	613	ALA
2	B	624	ASP

5.3.2 Protein sidechains [i](#)

In the following table, the Percentiles column shows the percent sidechain outliers of the chain as a percentile score with respect to all X-ray entries followed by that with respect to entries of similar

resolution.

The Analysed column shows the number of residues for which the sidechain conformation was analysed, and the total number of residues.

Mol	Chain	Analysed	Rotameric	Outliers	Percentiles	
1	A	217/273 (80%)	215 (99%)	2 (1%)	78	89
2	B	109/139 (78%)	107 (98%)	2 (2%)	59	74
All	All	326/412 (79%)	322 (99%)	4 (1%)	69	83

All (4) residues with a non-rotameric sidechain are listed below:

Mol	Chain	Res	Type
1	A	55	ASP
1	A	98	ASN
2	B	522	ASP
2	B	630	PHE

Some sidechains can be flipped to improve hydrogen bonding and reduce clashes. All (4) such sidechains are listed below:

Mol	Chain	Res	Type
1	A	139	HIS
1	A	278	ASN
2	B	508	GLN
2	B	595	GLN

5.3.3 RNA [i](#)

There are no RNA molecules in this entry.

5.4 Non-standard residues in protein, DNA, RNA chains [i](#)

There are no non-standard protein/DNA/RNA residues in this entry.

5.5 Carbohydrates [i](#)

4 monosaccharides are modelled in this entry.

In the following table, the Counts columns list the number of bonds (or angles) for which Mogul statistics could be retrieved, the number of bonds (or angles) that are observed in the model and the number of bonds (or angles) that are defined in the Chemical Component Dictionary. The Link column lists molecule types, if any, to which the group is linked. The Z score for a bond

length (or angle) is the number of standard deviations the observed value is removed from the expected value. A bond length (or angle) with $|Z| > 2$ is considered an outlier worth inspection. RMSZ is the root-mean-square of all Z scores of the bond lengths (or angles).

Mol	Type	Chain	Res	Link	Bond lengths			Bond angles		
					Counts	RMSZ	# Z > 2	Counts	RMSZ	# Z > 2
3	NAG	C	1	3,2	14,14,15	0.50	0	17,19,21	0.77	1 (5%)
3	NAG	C	2	3	14,14,15	0.31	0	17,19,21	0.66	1 (5%)
3	BMA	C	3	3	11,11,12	0.71	0	15,15,17	0.79	0
3	MAN	C	4	3	11,11,12	1.41	2 (18%)	15,15,17	1.95	4 (26%)

In the following table, the Chirals column lists the number of chiral outliers, the number of chiral centers analysed, the number of these observed in the model and the number defined in the Chemical Component Dictionary. Similar counts are reported in the Torsion and Rings columns. '-' means no outliers of that kind were identified.

Mol	Type	Chain	Res	Link	Chirals	Torsions	Rings
3	NAG	C	1	3,2	-	0/6/23/26	0/1/1/1
3	NAG	C	2	3	-	0/6/23/26	0/1/1/1
3	BMA	C	3	3	-	2/2/19/22	0/1/1/1
3	MAN	C	4	3	-	0/2/19/22	0/1/1/1

All (2) bond length outliers are listed below:

Mol	Chain	Res	Type	Atoms	Z	Observed(Å)	Ideal(Å)
3	C	4	MAN	C1-C2	3.83	1.60	1.52
3	C	4	MAN	O5-C1	2.15	1.47	1.43

The worst 5 of 6 bond angle outliers are listed below:

Mol	Chain	Res	Type	Atoms	Z	Observed(°)	Ideal(°)
3	C	4	MAN	C1-O5-C5	4.92	118.86	112.19
3	C	4	MAN	C1-C2-C3	3.59	114.08	109.67
3	C	4	MAN	O5-C1-C2	2.94	115.31	110.77
3	C	1	NAG	C1-O5-C5	2.69	115.83	112.19
3	C	2	NAG	C1-O5-C5	2.24	115.22	112.19

There are no chirality outliers.

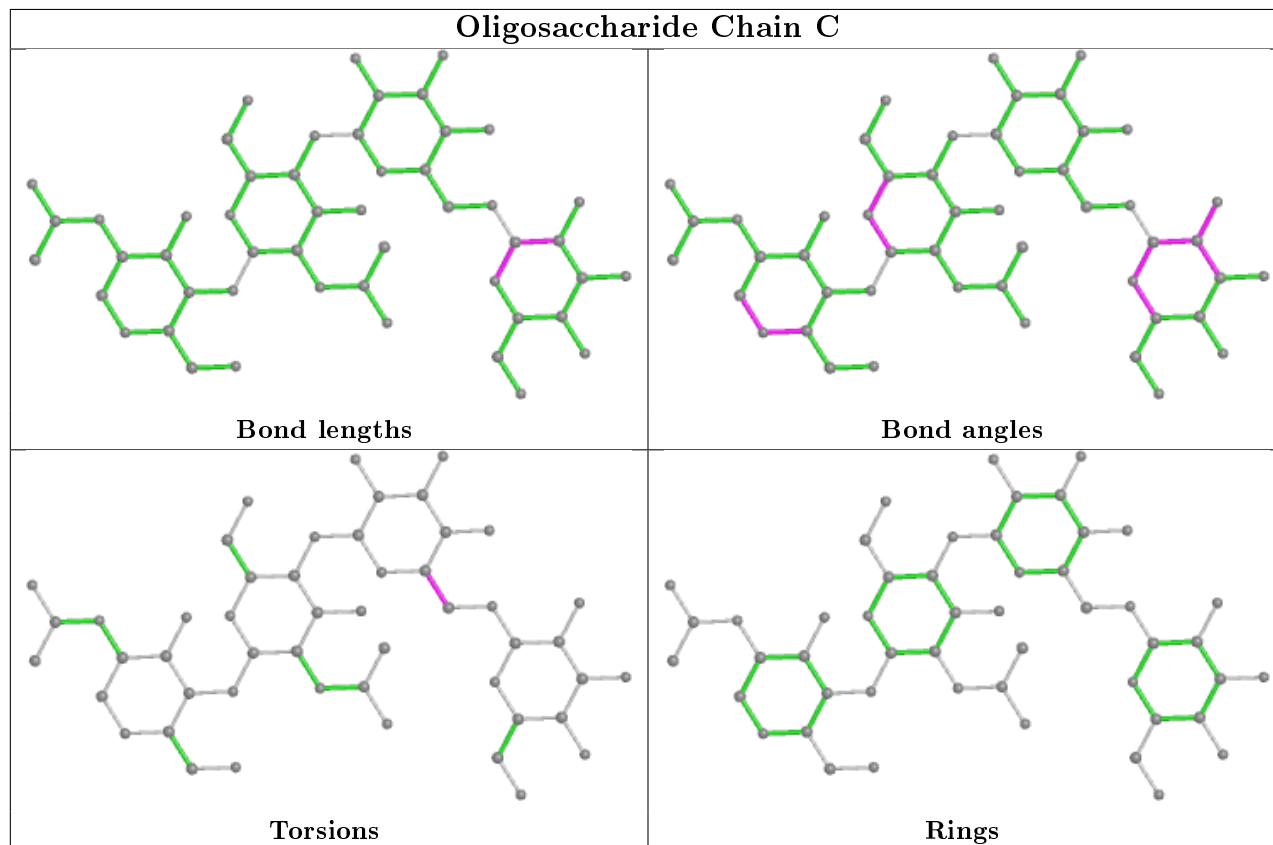
All (2) torsion outliers are listed below:

Mol	Chain	Res	Type	Atoms
3	C	3	BMA	O5-C5-C6-O6
3	C	3	BMA	C4-C5-C6-O6

There are no ring outliers.

No monomer is involved in short contacts.

The following is a two-dimensional graphical depiction of Mogul quality analysis of bond lengths, bond angles, torsion angles, and ring geometry for oligosaccharide.



5.6 Ligand geometry [i](#)

12 ligands are modelled in this entry.

In the following table, the Counts columns list the number of bonds (or angles) for which Mogul statistics could be retrieved, the number of bonds (or angles) that are observed in the model and the number of bonds (or angles) that are defined in the Chemical Component Dictionary. The Link column lists molecule types, if any, to which the group is linked. The Z score for a bond length (or angle) is the number of standard deviations the observed value is removed from the expected value. A bond length (or angle) with $|Z| > 2$ is considered an outlier worth inspection. RMSZ is the root-mean-square of all Z scores of the bond lengths (or angles).

Mol	Type	Chain	Res	Link	Bond lengths			Bond angles		
					Counts	RMSZ	$\# Z > 2$	Counts	RMSZ	$\# Z > 2$
6	DMS	A	606	-	3,3,3	0.67	0	3,3,3	0.53	0
4	NAG	A	602	1	14,14,15	0.38	0	17,19,21	0.44	0
5	GOL	B	706	-	5,5,5	0.92	0	5,5,5	0.98	0
5	GOL	A	605	-	5,5,5	0.90	0	5,5,5	0.97	0

Mol	Type	Chain	Res	Link	Bond lengths			Bond angles		
					Counts	RMSZ	# Z > 2	Counts	RMSZ	# Z > 2
5	GOL	B	705	-	5,5,5	0.99	0	5,5,5	0.96	0
4	NAG	A	601	1	14,14,15	0.26	0	17,19,21	0.60	0
6	DMS	A	608	-	3,3,3	0.66	0	3,3,3	0.52	0
7	RTZ	B	708	-	27,28,28	4.31	5 (18%)	35,39,39	1.92	4 (11%)
4	NAG	A	603	1	14,14,15	0.35	0	17,19,21	0.41	0
5	GOL	A	607	-	5,5,5	0.99	0	5,5,5	1.01	0
4	NAG	A	604	1	14,14,15	0.36	0	17,19,21	0.56	0
6	DMS	B	707	-	3,3,3	0.64	0	3,3,3	0.52	0

In the following table, the Chirals column lists the number of chiral outliers, the number of chiral centers analysed, the number of these observed in the model and the number defined in the Chemical Component Dictionary. Similar counts are reported in the Torsion and Rings columns. '-' means no outliers of that kind were identified.

Mol	Type	Chain	Res	Link	Chirals	Torsions	Rings
4	NAG	A	602	1	-	2/6/23/26	0/1/1/1
5	GOL	B	706	-	-	0/4/4/4	-
4	NAG	A	601	1	-	2/6/23/26	0/1/1/1
5	GOL	B	705	-	-	0/4/4/4	-
5	GOL	A	605	-	-	2/4/4/4	-
7	RTZ	B	708	-	-	5/7/30/30	0/3/4/4
4	NAG	A	603	1	-	0/6/23/26	0/1/1/1
4	NAG	A	604	1	-	2/6/23/26	0/1/1/1
5	GOL	A	607	-	-	1/4/4/4	-

All (5) bond length outliers are listed below:

Mol	Chain	Res	Type	Atoms	Z	Observed(Å)	Ideal(Å)
7	B	708	RTZ	CAS-NAW	15.02	1.64	1.40
7	B	708	RTZ	CAR-NAW	14.50	1.63	1.40
7	B	708	RTZ	CAU-SAY	-5.26	1.67	1.76
7	B	708	RTZ	CAT-SAY	-4.79	1.68	1.76
7	B	708	RTZ	CAQ-SAX	2.31	1.81	1.76

All (4) bond angle outliers are listed below:

Mol	Chain	Res	Type	Atoms	Z	Observed(°)	Ideal(°)
7	B	708	RTZ	CAU-SAY-CAT	6.86	116.89	100.44
7	B	708	RTZ	CAL-CAP-CAG	-5.09	104.83	112.58
7	B	708	RTZ	CAN-NAW-CAR	-4.88	112.67	119.03
7	B	708	RTZ	CAB-SAX-CAQ	2.50	109.39	103.38

There are no chirality outliers.

5 of 14 torsion outliers are listed below:

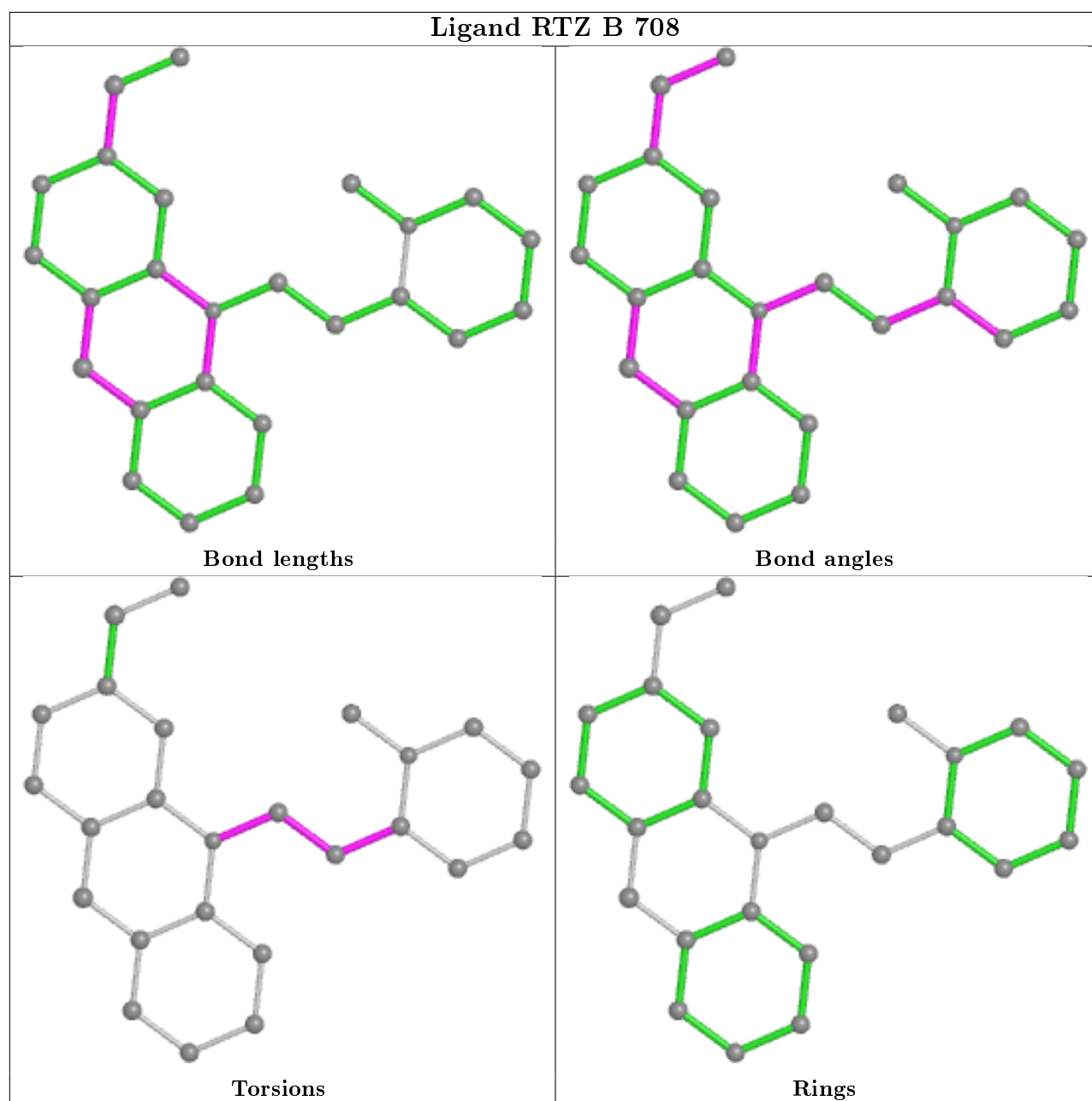
Mol	Chain	Res	Type	Atoms
7	B	708	RTZ	CAP-CAL-CAN-NAW
7	B	708	RTZ	CAN-CAL-CAP-CAG
7	B	708	RTZ	CAN-CAL-CAP-NAV
7	B	708	RTZ	CAL-CAN-NAW-CAS
4	A	601	NAG	C4-C5-C6-O6

There are no ring outliers.

4 monomers are involved in 9 short contacts:

Mol	Chain	Res	Type	Clashes	Symm-Clashes
4	A	601	NAG	1	0
7	B	708	RTZ	4	0
5	A	607	GOL	3	0
4	A	604	NAG	1	0

The following is a two-dimensional graphical depiction of Mogul quality analysis of bond lengths, bond angles, torsion angles, and ring geometry for all instances of the Ligand of Interest. In addition, ligands with molecular weight > 250 and outliers as shown on the validation Tables will also be included. For torsion angles, if less than 5% of the Mogul distribution of torsion angles is within 10 degrees of the torsion angle in question, then that torsion angle is considered an outlier. Any bond that is central to one or more torsion angles identified as an outlier by Mogul will be highlighted in the graph. For rings, the root-mean-square deviation (RMSD) between the ring in question and similar rings identified by Mogul is calculated over all ring torsion angles. If the average RMSD is greater than 60 degrees and the minimal RMSD between the ring in question and any Mogul-identified rings is also greater than 60 degrees, then that ring is considered an outlier. The outliers are highlighted in purple. The color gray indicates Mogul did not find sufficient equivalents in the CSD to analyse the geometry.



5.7 Other polymers [i](#)

There are no such residues in this entry.

5.8 Polymer linkage issues [i](#)

The following chains have linkage breaks:

Mol	Chain	Number of breaks
1	A	1

All chain breaks are listed below:

Model	Chain	Residue-1	Atom-1	Residue-2	Atom-2	Distance (Å)
1	A	311:VAL	C	471:UNK	N	11.38

6 Fit of model and data [i](#)

6.1 Protein, DNA and RNA chains [i](#)

In the following table, the column labelled '#RSRZ> 2' contains the number (and percentage) of RSRZ outliers, followed by percent RSRZ outliers for the chain as percentile scores relative to all X-ray entries and entries of similar resolution. The OWAB column contains the minimum, median, 95th percentile and maximum values of the occupancy-weighted average B-factor per residue. The column labelled 'Q< 0.9' lists the number of (and percentage) of residues with an average occupancy less than 0.9.

Mol	Chain	Analysed	<RSRZ>	#RSRZ>2	OWAB(Å ²)	Q<0.9
1	A	247/330 (74%)	0.91	30 (12%) 4 6	47, 69, 153, 197	0
2	B	130/168 (77%)	1.15	20 (15%) 2 3	49, 65, 193, 206	0
All	All	377/498 (75%)	0.99	50 (13%) 3 4	47, 67, 169, 206	0

The worst 5 of 50 RSRZ outliers are listed below:

Mol	Chain	Res	Type	RSRZ
1	A	308	PHE	9.7
2	B	620	THR	9.6
2	B	619	ILE	8.6
2	B	627	ILE	7.6
2	B	626	ILE	7.5

6.2 Non-standard residues in protein, DNA, RNA chains [i](#)

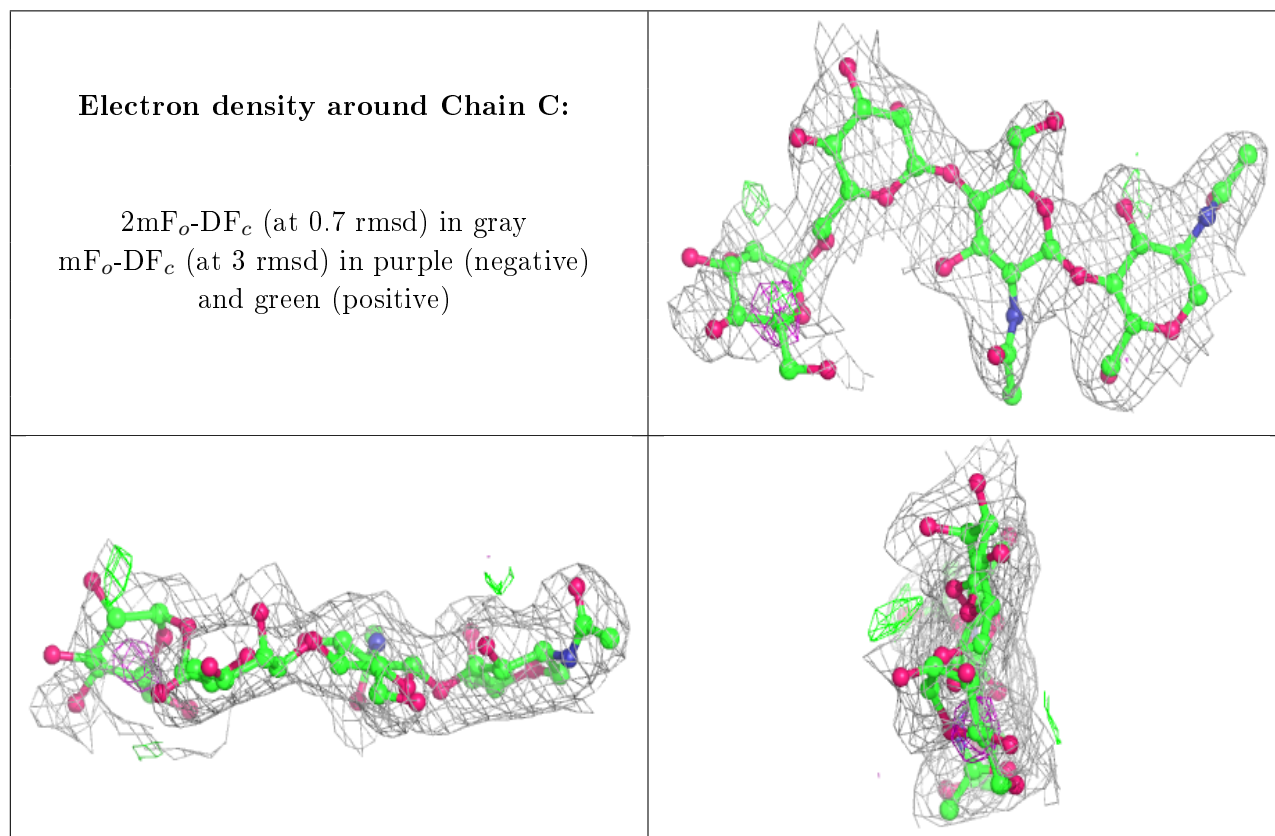
There are no non-standard protein/DNA/RNA residues in this entry.

6.3 Carbohydrates [i](#)

In the following table, the Atoms column lists the number of modelled atoms in the group and the number defined in the chemical component dictionary. The B-factors column lists the minimum, median, 95th percentile and maximum values of B factors of atoms in the group. The column labelled 'Q< 0.9' lists the number of atoms with occupancy less than 0.9.

Mol	Type	Chain	Res	Atoms	RSCC	RSR	B-factors(Å ²)	Q<0.9
3	MAN	C	4	11/12	0.54	0.37	166,180,183,184	0
3	BMA	C	3	11/12	0.73	0.14	131,140,154,161	0
3	NAG	C	2	14/15	0.87	0.16	101,110,124,137	0
3	NAG	C	1	14/15	0.97	0.13	49,59,66,81	0

The following is a graphical depiction of the model fit to experimental electron density for oligosaccharide. Each fit is shown from different orientation to approximate a three-dimensional view.

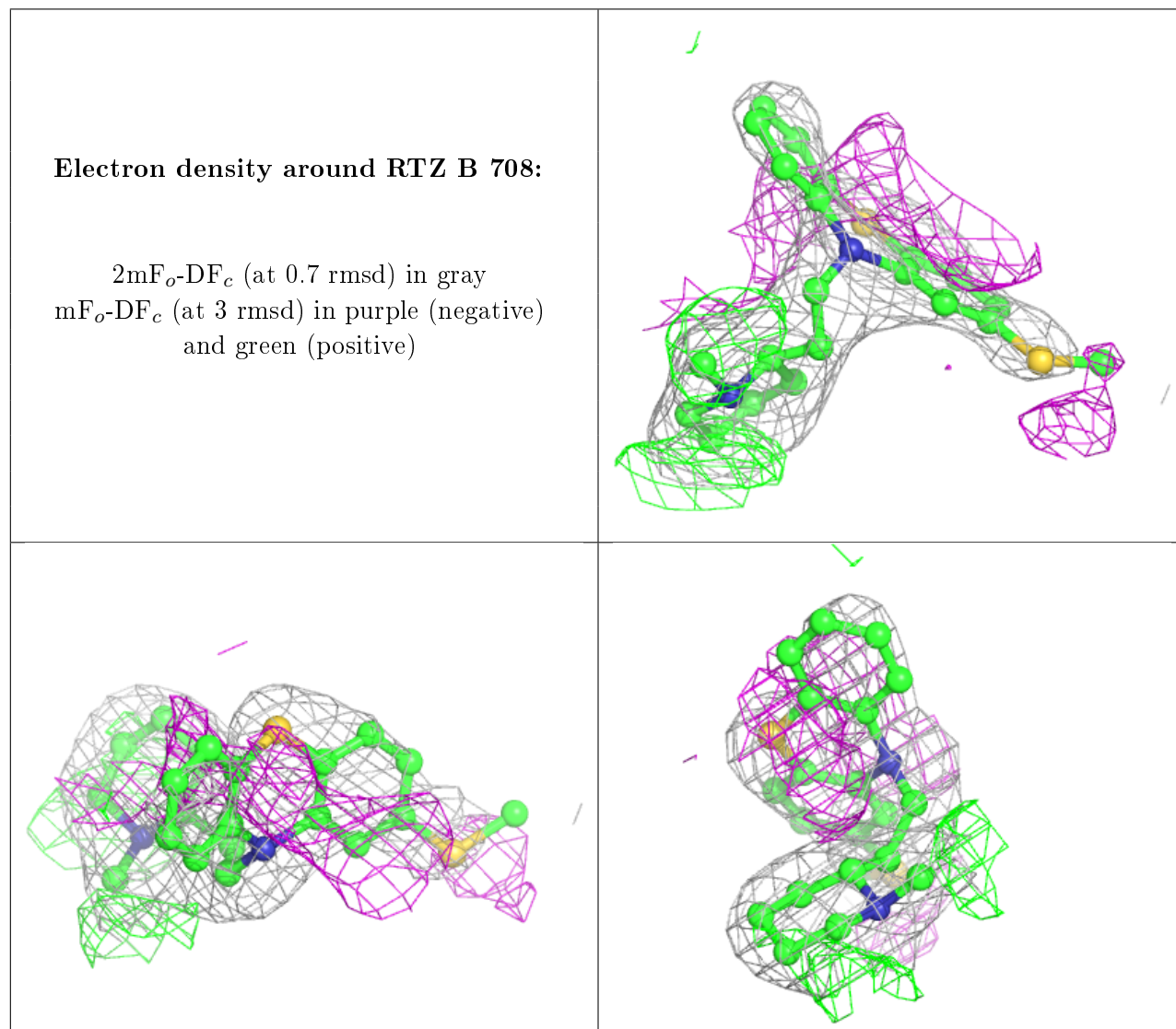


6.4 Ligands [i](#)

In the following table, the Atoms column lists the number of modelled atoms in the group and the number defined in the chemical component dictionary. The B-factors column lists the minimum, median, 95th percentile and maximum values of B factors of atoms in the group. The column labelled 'Q< 0.9' lists the number of atoms with occupancy less than 0.9.

Mol	Type	Chain	Res	Atoms	RSCC	RSR	B-factors(Å ²)	Q<0.9
4	NAG	A	602	14/15	0.71	0.36	159,174,182,183	0
5	GOL	B	706	6/6	0.71	0.34	105,116,118,123	0
7	RTZ	B	708	25/25	0.73	0.32	80,135,147,164	0
6	DMS	A	606	4/4	0.76	0.28	138,138,142,144	0
4	NAG	A	604	14/15	0.81	0.71	126,157,165,166	0
5	GOL	A	605	6/6	0.83	0.30	89,92,99,103	0
5	GOL	A	607	6/6	0.85	0.35	105,114,118,118	0
6	DMS	B	707	4/4	0.86	0.32	194,195,195,203	0
6	DMS	A	608	4/4	0.90	0.20	124,124,128,130	0
4	NAG	A	603	14/15	0.91	0.17	106,119,128,128	0
5	GOL	B	705	6/6	0.94	0.21	72,89,94,95	0
4	NAG	A	601	14/15	0.94	0.17	67,87,107,119	0

The following is a graphical depiction of the model fit to experimental electron density of all instances of the Ligand of Interest. In addition, ligands with molecular weight > 250 and outliers as shown on the geometry validation Tables will also be included. Each fit is shown from different orientation to approximate a three-dimensional view.



6.5 Other polymers [i](#)

There are no such residues in this entry.