



# Full wwPDB X-ray Structure Validation Report ⓘ

Sep 24, 2025 – 06:18 am BST

PDB ID : 6FKM / pdb\_00006fkm  
Title : Drosophila Plexin A in complex with Semaphorin 1b  
Authors : Rozbesky, D.; Harlos, K.; Jones, E.Y.  
Deposited on : 2018-01-24  
Resolution : 2.96 Å(reported)

This is a Full wwPDB X-ray Structure Validation Report for a publicly released PDB entry.

We welcome your comments at [validation@mail.wwpdb.org](mailto:validation@mail.wwpdb.org)

A user guide is available at

<https://www.wwpdb.org/validation/2017/XrayValidationReportHelp>

with specific help available everywhere you see the ⓘ symbol.

The types of validation reports are described at

<http://www.wwpdb.org/validation/2017/FAQs#types>.

---

The following versions of software and data (see [references ⓘ](#)) were used in the production of this report:

MolProbity	:	4-5-2 with Phenix2.0
Mogul	:	1.8.4, CSD as541be (2020)
Xtriage (Phenix)	:	2.0
EDS	:	3.0
Percentile statistics	:	20231227.v01 (using entries in the PDB archive December 27th 2023)
CCP4	:	9.0.010 (Gargrove)
Density-Fitness	:	1.0.12
Ideal geometry (proteins)	:	Engh & Huber (2001)
Ideal geometry (DNA, RNA)	:	Parkinson et al. (1996)
Validation Pipeline (wwPDB-VP)	:	2.46

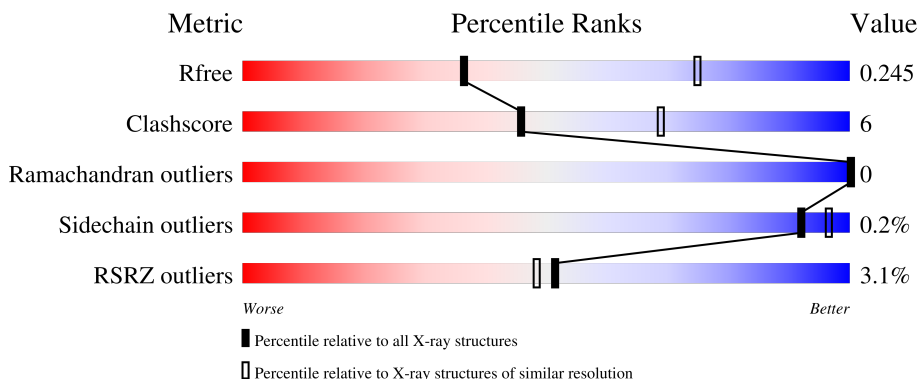
# 1 Overall quality at a glance

The following experimental techniques were used to determine the structure:

## *X-RAY DIFFRACTION*

The reported resolution of this entry is 2.96 Å.

Percentile scores (ranging between 0-100) for global validation metrics of the entry are shown in the following graphic. The table shows the number of entries on which the scores are based.



Metric	Whole archive (#Entries)	Similar resolution (#Entries, resolution range(Å))
$R_{free}$	164625	1044 (2.98-2.94)
Clashscore	180529	1097 (2.98-2.94)
Ramachandran outliers	177936	1049 (2.98-2.94)
Sidechain outliers	177891	1049 (2.98-2.94)
RSRZ outliers	164620	1044 (2.98-2.94)

The table below summarises the geometric issues observed across the polymeric chains and their fit to the electron density. The red, orange, yellow and green segments of the lower bar indicate the fraction of residues that contain outliers for  $\geq 3$ , 2, 1 and 0 types of geometric quality criteria respectively. A grey segment represents the fraction of residues that are not modelled. The numeric value for each fraction is indicated below the corresponding segment, with a dot representing fractions  $\leq 5\%$ . The upper red bar (where present) indicates the fraction of residues that have poor fit to the electron density. The numeric value is given above the bar.

Mol	Chain	Length	Quality of chain
1	A	715	<div> <div>4%</div> <div>61% 11% 28%</div> </div>
2	B	578	<div> <div>4%</div> <div>75% 13% 12%</div> </div>
3	C	5	<div> <div>40% 60%</div> </div>
3	D	5	<div> <div>60% 40%</div> </div>

## 2 Entry composition

There are 4 unique types of molecules in this entry. The entry contains 8119 atoms, of which 0 are hydrogens and 0 are deuteriums.

In the tables below, the ZeroOcc column contains the number of atoms modelled with zero occupancy, the AltConf column contains the number of residues with at least one atom in alternate conformation and the Trace column contains the number of residues modelled with at most 2 atoms.

- Molecule 1 is a protein called Plexin A, isoform A.

Mol	Chain	Residues	Atoms					ZeroOcc	AltConf	Trace
1	A	512	Total	C	N	O	S	0	0	0
			3931	2470	656	779	26			

There are 12 discrepancies between the modelled and reference sequences:

Chain	Residue	Modelled	Actual	Comment	Reference
A	25	GLU	-	expression tag	UNP Q9V491
A	26	THR	-	expression tag	UNP Q9V491
A	27	GLY	-	expression tag	UNP Q9V491
A	731	GLY	-	expression tag	UNP Q9V491
A	732	THR	-	expression tag	UNP Q9V491
A	733	LYS	-	expression tag	UNP Q9V491
A	734	HIS	-	expression tag	UNP Q9V491
A	735	HIS	-	expression tag	UNP Q9V491
A	736	HIS	-	expression tag	UNP Q9V491
A	737	HIS	-	expression tag	UNP Q9V491
A	738	HIS	-	expression tag	UNP Q9V491
A	739	HIS	-	expression tag	UNP Q9V491

- Molecule 2 is a protein called MIP07328p.

Mol	Chain	Residues	Atoms					ZeroOcc	AltConf	Trace
2	B	510	Total	C	N	O	S	0	0	0
			4010	2543	698	750	19			

There are 12 discrepancies between the modelled and reference sequences:

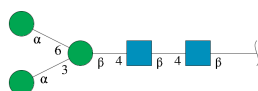
Chain	Residue	Modelled	Actual	Comment	Reference
B	34	GLU	-	expression tag	UNP Q7KK54
B	35	THR	-	expression tag	UNP Q7KK54
B	36	GLY	-	expression tag	UNP Q7KK54
B	603	GLY	-	expression tag	UNP Q7KK54

*Continued on next page...*

Continued from previous page...

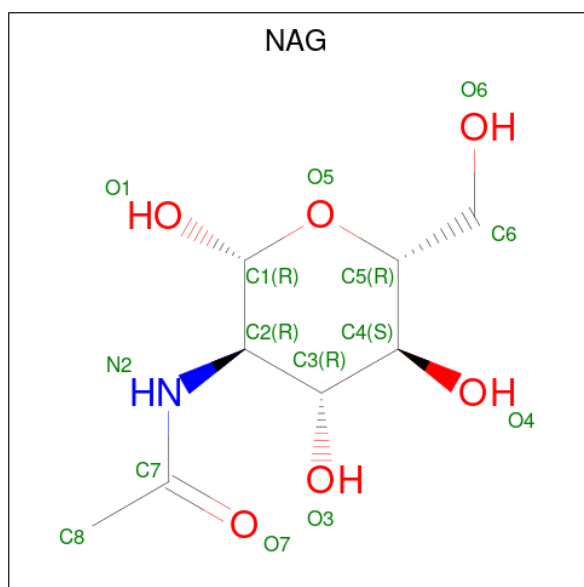
Chain	Residue	Modelled	Actual	Comment	Reference
B	604	THR	-	expression tag	UNP Q7KK54
B	605	LYS	-	expression tag	UNP Q7KK54
B	606	HIS	-	expression tag	UNP Q7KK54
B	607	HIS	-	expression tag	UNP Q7KK54
B	608	HIS	-	expression tag	UNP Q7KK54
B	609	HIS	-	expression tag	UNP Q7KK54
B	610	HIS	-	expression tag	UNP Q7KK54
B	611	HIS	-	expression tag	UNP Q7KK54

- Molecule 3 is an oligosaccharide called alpha-D-mannopyranose-(1-3)-[alpha-D-mannopyranose-(1-6)]beta-D-mannopyranose-(1-4)-2-acetamido-2-deoxy-beta-D-glucopyranose-(1-4)-2-acetamido-2-deoxy-beta-D-glucopyranose.



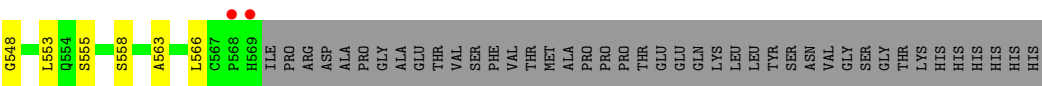
Mol	Chain	Residues	Atoms				ZeroOcc	AltConf	Trace
3	C	5	Total	C	N	O	0	0	0
			61	34	2	25			
3	D	5	Total	C	N	O	0	0	0
			61	34	2	25			

- Molecule 4 is 2-acetamido-2-deoxy-beta-D-glucopyranose (CCD ID: NAG) (formula: C<sub>8</sub>H<sub>15</sub>NO<sub>6</sub>).



Mol	Chain	Residues	Atoms				ZeroOcc	AltConf
4	A	1	Total	C	N	O	0	0
			14	8	1	5		
4	A	1	Total	C	N	O	0	0
			14	8	1	5		
4	A	1	Total	C	N	O	0	0
			14	8	1	5		
4	A	1	Total	C	N	O	0	0
			14	8	1	5		





● Molecule 3: alpha-D-mannopyranose-(1-3)-[alpha-D-mannopyranose-(1-6)]beta-D-mannopyranose-(1-4)-2-acetamido-2-deoxy-beta-D-glucopyranose-(1-4)-2-acetamido-2-deoxy-beta-D-glucopyranose



● Molecule 3: alpha-D-mannopyranose-(1-3)-[alpha-D-mannopyranose-(1-6)]beta-D-mannopyranose-(1-4)-2-acetamido-2-deoxy-beta-D-glucopyranose-(1-4)-2-acetamido-2-deoxy-beta-D-glucopyranose



## 4 Data and refinement statistics

Property	Value	Source
Space group	C 2 2 21	Depositor
Cell constants a, b, c, $\alpha$ , $\beta$ , $\gamma$	130.94Å 195.09Å 124.84Å 90.00° 90.00° 90.00°	Depositor
Resolution (Å)	76.86 – 2.96 76.86 – 2.96	Depositor EDS
% Data completeness (in resolution range)	93.8 (76.86-2.96) 88.0 (76.86-2.96)	Depositor EDS
$R_{merge}$	0.17	Depositor
$R_{sym}$	(Not available)	Depositor
$\langle I/\sigma(I) \rangle$ <sup>1</sup>	1.43 (at 2.96Å)	Xtriage
Refinement program	PHENIX (1.13rc2_2986: ???)	Depositor
R, $R_{free}$	0.186 , 0.246 0.185 , 0.245	Depositor DCC
$R_{free}$ test set	1515 reflections (4.50%)	wwPDB-VP
Wilson B-factor (Å <sup>2</sup> )	63.5	Xtriage
Anisotropy	0.310	Xtriage
Bulk solvent $k_{sol}$ (e/Å <sup>3</sup> ), $B_{sol}$ (Å <sup>2</sup> )	0.32 , 44.3	EDS
L-test for twinning <sup>2</sup>	$\langle  L  \rangle = 0.47$ , $\langle L^2 \rangle = 0.30$	Xtriage
Estimated twinning fraction	No twinning to report.	Xtriage
$F_o, F_c$ correlation	0.93	EDS
Total number of atoms	8119	wwPDB-VP
Average B, all atoms (Å <sup>2</sup> )	74.0	wwPDB-VP

Xtriage's analysis on translational NCS is as follows: *The largest off-origin peak in the Patterson function is 2.59% of the height of the origin peak. No significant pseudotranslation is detected.*

<sup>1</sup>Intensities estimated from amplitudes.

<sup>2</sup>Theoretical values of  $\langle |L| \rangle$ ,  $\langle L^2 \rangle$  for acentric reflections are 0.5, 0.333 respectively for untwinned datasets, and 0.375, 0.2 for perfectly twinned datasets.



## 5 Model quality

### 5.1 Standard geometry

Bond lengths and bond angles in the following residue types are not validated in this section: NAG, MAN, BMA

The Z score for a bond length (or angle) is the number of standard deviations the observed value is removed from the expected value. A bond length (or angle) with  $|Z| > 5$  is considered an outlier worth inspection. RMSZ is the root-mean-square of all Z scores of the bond lengths (or angles).

Mol	Chain	Bond lengths		Bond angles	
		RMSZ	$\# Z  > 5$	RMSZ	$\# Z  > 5$
1	A	0.23	0/4010	0.44	0/5450
2	B	0.21	0/4108	0.41	0/5582
All	All	0.22	0/8118	0.42	0/11032

There are no bond length outliers.

There are no bond angle outliers.

There are no chirality outliers.

There are no planarity outliers.

### 5.2 Too-close contacts

In the following table, the Non-H and H(model) columns list the number of non-hydrogen atoms and hydrogen atoms in the chain respectively. The H(added) column lists the number of hydrogen atoms added and optimized by MolProbity. The Clashes column lists the number of clashes within the asymmetric unit, whereas Symm-Clashes lists symmetry-related clashes.

Mol	Chain	Non-H	H(model)	H(added)	Clashes	Symm-Clashes
1	A	3931	0	3831	52	0
2	B	4010	0	3928	42	0
3	C	61	0	52	0	0
3	D	61	0	52	0	0
4	A	56	0	51	1	0
All	All	8119	0	7914	91	0

The all-atom clashscore is defined as the number of clashes found per 1000 atoms (including hydrogen atoms). The all-atom clashscore for this structure is 6.

All (91) close contacts within the same asymmetric unit are listed below, sorted by their clash magnitude.

Atom-1	Atom-2	Interatomic distance (Å)	Clash overlap (Å)
1:A:311:PRO:HG2	1:A:433:PRO:HB3	1.66	0.77
2:B:348:GLY:O	2:B:372:ARG:NH1	2.17	0.77
2:B:209:LEU:HD13	2:B:211:TYR:HB2	1.76	0.68
1:A:199:HIS:O	1:A:201:VAL:N	2.25	0.66
1:A:464:THR:HG22	1:A:466:ASP:H	1.59	0.65
2:B:238:GLY:HA2	2:B:267:LYS:HE2	1.81	0.63
1:A:148:ARG:NH1	1:A:234:MET:HE1	2.14	0.62
2:B:534:THR:HG22	2:B:536:GLU:H	1.65	0.62
1:A:138:LYS:HB2	1:A:180:VAL:HG11	1.82	0.61
2:B:129:GLU:HG3	2:B:146:THR:HG22	1.83	0.60
2:B:553:LEU:HD21	2:B:566:LEU:HB3	1.82	0.60
1:A:315:ILE:HD12	1:A:323:LYS:HG2	1.85	0.59
1:A:148:ARG:HH12	1:A:234:MET:HE1	1.68	0.58
2:B:59:ASP:HB3	2:B:76:LYS:HB2	1.85	0.58
1:A:345:ILE:HG22	1:A:376:LYS:HD3	1.86	0.57
2:B:412:LYS:HD2	2:B:419:LEU:HD11	1.86	0.57
1:A:410:THR:HG22	1:A:412:LEU:H	1.70	0.56
1:A:215:SER:HB3	1:A:218:ARG:HG2	1.86	0.56
1:A:464:THR:HB	1:A:468:PHE:H	1.69	0.56
2:B:521:LEU:HB3	2:B:563:ALA:HB1	1.86	0.56
1:A:72:ASP:OD1	1:A:96:TYR:OH	2.21	0.55
2:B:377:VAL:HG11	2:B:383:LEU:HD21	1.89	0.55
1:A:282:SER:HB3	1:A:399:ASP:OD2	2.08	0.54
1:A:343:LEU:HD13	1:A:374:SER:HB3	1.89	0.54
1:A:495:ASN:OD1	1:A:496:ARG:N	2.40	0.54
1:A:544:SER:N	1:A:564:TYR:O	2.39	0.53
1:A:180:VAL:HG13	1:A:188:THR:HG21	1.91	0.53
1:A:274:PHE:HB2	1:A:295:VAL:HB	1.90	0.53
1:A:396:ARG:HD2	1:A:427:PRO:HD2	1.91	0.53
1:A:426:SER:HB2	1:A:427:PRO:HD3	1.90	0.53
2:B:250:GLU:OE1	2:B:261:ARG:NH1	2.40	0.53
2:B:453:ASN:HB3	2:B:466:LEU:HD11	1.91	0.52
2:B:212:ARG:HG2	2:B:213:GLU:H	1.75	0.51
1:A:453:SER:OG	1:A:458:THR:HG22	2.10	0.50
1:A:423:ASP:HB2	2:B:108:LYS:HE3	1.93	0.50
1:A:399:ASP:OD1	1:A:399:ASP:N	2.43	0.50
1:A:181:ALA:HA	1:A:218:ARG:HH22	1.78	0.48
1:A:130:ARG:O	4:A:1003:NAG:H82	2.13	0.48
1:A:183:ASP:OD1	1:A:184:ALA:N	2.45	0.48
2:B:144:HIS:HB2	2:B:170:ARG:HB3	1.95	0.48
2:B:361:LEU:HB3	2:B:362:PRO:HD2	1.96	0.48
1:A:541:GLY:HA3	1:A:565:TRP:CE2	2.49	0.48

Continued on next page...

*Continued from previous page...*

Atom-1	Atom-2	Interatomic distance (Å)	Clash overlap (Å)
1:A:75:LEU:HD13	1:A:510:MET:HE2	1.95	0.47
2:B:476:VAL:HG11	2:B:497:VAL:HG21	1.96	0.47
1:A:442:PHE:CD1	1:A:446:LEU:HD11	2.50	0.47
2:B:199:THR:OG1	2:B:200:VAL:N	2.48	0.47
1:A:175:VAL:HG21	1:A:235:PHE:HD2	1.79	0.47
1:A:552:ARG:HG2	1:A:565:TRP:CE2	2.50	0.46
2:B:136:ASN:HB3	2:B:139:LYS:O	2.16	0.46
1:A:83:ILE:HG13	1:A:84:THR:HG23	1.96	0.46
2:B:531:ASP:OD1	2:B:532:LEU:N	2.48	0.46
1:A:552:ARG:HG2	1:A:565:TRP:CD2	2.51	0.46
1:A:390:PHE:CD2	1:A:412:LEU:HD12	2.50	0.46
1:A:292:THR:HG22	1:A:312:VAL:HB	1.98	0.45
1:A:422:LEU:O	1:A:426:SER:OG	2.28	0.45
2:B:219:GLN:HG2	2:B:220:TYR:CD2	2.51	0.45
2:B:351:LYS:HD2	2:B:396:LEU:HD23	1.98	0.45
1:A:247:ARG:HG3	1:A:247:ARG:HH11	1.82	0.45
1:A:175:VAL:HG21	1:A:235:PHE:CD2	2.51	0.45
1:A:424:VAL:HG12	2:B:108:LYS:HD2	1.99	0.45
2:B:555:SER:OG	2:B:558:SER:OG	2.34	0.44
1:A:313:GLU:HB3	1:A:315:ILE:HD11	1.99	0.44
1:A:295:VAL:HG22	1:A:309:GLU:HG2	1.98	0.44
1:A:158:GLY:HA3	1:A:180:VAL:O	2.16	0.44
2:B:50:LEU:HD21	2:B:507:PRO:HG3	1.99	0.44
2:B:52:HIS:HB2	2:B:54:ILE:HD11	1.99	0.44
1:A:332:LEU:HD11	1:A:350:ASP:HB3	2.00	0.44
1:A:465:SER:HA	1:A:493:GLU:HG3	2.00	0.44
2:B:121:VAL:HB	2:B:133:CYS:HB2	2.00	0.43
2:B:135:THR:HB	2:B:180:TYR:O	2.19	0.43
2:B:221:ASP:OD1	2:B:223:LYS:HG2	2.18	0.43
2:B:323:THR:HB	2:B:418:ARG:NH1	2.34	0.43
1:A:178:ALA:HB1	1:A:221:ILE:HD11	2.00	0.43
1:A:439:VAL:HB	1:A:480:ALA:HB3	2.01	0.42
1:A:556:GLN:HG3	1:A:558:ASP:H	1.84	0.42
2:B:321:VAL:HG23	2:B:422:ILE:HB	2.01	0.42
1:A:165:LEU:HD23	1:A:165:LEU:HA	1.83	0.42
2:B:355:ASP:N	2:B:355:ASP:OD1	2.52	0.42
1:A:475:GLU:CD	1:A:569:LYS:HZ2	2.21	0.42
2:B:118:TYR:O	2:B:135:THR:HG23	2.20	0.41
2:B:349:GLU:OE2	2:B:365:ARG:NH1	2.47	0.41
2:B:502:SER:O	2:B:503:LEU:HD23	2.20	0.41
2:B:104:LEU:O	2:B:108:LYS:HG3	2.20	0.41

*Continued on next page...*

*Continued from previous page...*

Atom-1	Atom-2	Interatomic distance (Å)	Clash overlap (Å)
2:B:485:GLU:O	2:B:486:LEU:HD23	2.20	0.41
2:B:546:LYS:O	2:B:548:GLY:N	2.52	0.41
1:A:412:LEU:HD23	1:A:412:LEU:HA	1.74	0.41
2:B:310:VAL:HG13	2:B:426:PRO:HB3	2.02	0.41
1:A:412:LEU:HD23	2:B:107:LEU:HD11	2.03	0.41
2:B:196:TYR:CE2	2:B:212:ARG:HD3	2.56	0.41
2:B:247:LEU:HD23	2:B:247:LEU:HA	1.88	0.40
1:A:173:HIS:CE1	1:A:175:VAL:HG12	2.56	0.40

There are no symmetry-related clashes.

## 5.3 Torsion angles [i](#)

### 5.3.1 Protein backbone [i](#)

In the following table, the Percentiles column shows the percent Ramachandran outliers of the chain as a percentile score with respect to all X-ray entries followed by that with respect to entries of similar resolution.

The Analysed column shows the number of residues for which the backbone conformation was analysed, and the total number of residues.

Mol	Chain	Analysed	Favoured	Allowed	Outliers	Percentiles	
1	A	510/715 (71%)	487 (96%)	23 (4%)	0	100	100
2	B	506/578 (88%)	481 (95%)	25 (5%)	0	100	100
All	All	1016/1293 (79%)	968 (95%)	48 (5%)	0	100	100

There are no Ramachandran outliers to report.

### 5.3.2 Protein sidechains [i](#)

In the following table, the Percentiles column shows the percent sidechain outliers of the chain as a percentile score with respect to all X-ray entries followed by that with respect to entries of similar resolution.

The Analysed column shows the number of residues for which the sidechain conformation was analysed, and the total number of residues.

Mol	Chain	Analysed	Rotameric	Outliers	Percentiles	
1	A	452/633 (71%)	450 (100%)	2 (0%)	89	95

*Continued on next page...*

Continued from previous page...

Mol	Chain	Analysed	Rotameric	Outliers	Percentiles	
2	B	447/502 (89%)	447 (100%)	0	100	100
All	All	899/1135 (79%)	897 (100%)	2 (0%)	92	96

All (2) residues with a non-rotameric sidechain are listed below:

Mol	Chain	Res	Type
1	A	297	ILE
1	A	371	CYS

Sometimes sidechains can be flipped to improve hydrogen bonding and reduce clashes. All (2) such sidechains are listed below:

Mol	Chain	Res	Type
1	A	76	ASN
1	A	137	ASN

### 5.3.3 RNA ⓘ

There are no RNA molecules in this entry.

## 5.4 Non-standard residues in protein, DNA, RNA chains ⓘ

There are no non-standard protein/DNA/RNA residues in this entry.

## 5.5 Carbohydrates ⓘ

10 monosaccharides are modelled in this entry.

In the following table, the Counts columns list the number of bonds (or angles) for which Mogul statistics could be retrieved, the number of bonds (or angles) that are observed in the model and the number of bonds (or angles) that are defined in the Chemical Component Dictionary. The Link column lists molecule types, if any, to which the group is linked. The Z score for a bond length (or angle) is the number of standard deviations the observed value is removed from the expected value. A bond length (or angle) with  $|Z| > 2$  is considered an outlier worth inspection. RMSZ is the root-mean-square of all Z scores of the bond lengths (or angles).

Mol	Type	Chain	Res	Link	Bond lengths			Bond angles		
					Counts	RMSZ	$\# Z  > 2$	Counts	RMSZ	$\# Z  > 2$
3	NAG	C	1	3,2	14,14,15	0.34	0	17,19,21	0.48	0
3	NAG	C	2	3	14,14,15	0.29	0	17,19,21	0.48	0

Mol	Type	Chain	Res	Link	Bond lengths			Bond angles		
					Counts	RMSZ	# Z  > 2	Counts	RMSZ	# Z  > 2
3	BMA	C	3	3	11,11,12	0.89	0	15,15,17	1.62	2 (13%)
3	MAN	C	4	3	11,11,12	1.01	0	15,15,17	1.04	2 (13%)
3	MAN	C	5	3	11,11,12	0.91	1 (9%)	15,15,17	1.20	2 (13%)
3	NAG	D	1	3,2	14,14,15	0.31	0	17,19,21	0.51	0
3	NAG	D	2	3	14,14,15	0.35	0	17,19,21	0.50	0
3	BMA	D	3	3	11,11,12	0.83	0	15,15,17	0.76	0
3	MAN	D	4	3	11,11,12	0.94	1 (9%)	15,15,17	1.22	2 (13%)
3	MAN	D	5	3	11,11,12	0.82	0	15,15,17	1.09	1 (6%)

In the following table, the Chirals column lists the number of chiral outliers, the number of chiral centers analysed, the number of these observed in the model and the number defined in the Chemical Component Dictionary. Similar counts are reported in the Torsion and Rings columns. '-' means no outliers of that kind were identified.

Mol	Type	Chain	Res	Link	Chirals	Torsions	Rings
3	NAG	C	1	3,2	-	2/6/23/26	0/1/1/1
3	NAG	C	2	3	-	2/6/23/26	0/1/1/1
3	BMA	C	3	3	-	2/2/19/22	0/1/1/1
3	MAN	C	4	3	-	0/2/19/22	0/1/1/1
3	MAN	C	5	3	-	1/2/19/22	0/1/1/1
3	NAG	D	1	3,2	-	1/6/23/26	0/1/1/1
3	NAG	D	2	3	-	0/6/23/26	0/1/1/1
3	BMA	D	3	3	-	2/2/19/22	0/1/1/1
3	MAN	D	4	3	-	0/2/19/22	0/1/1/1
3	MAN	D	5	3	-	0/2/19/22	0/1/1/1

All (2) bond length outliers are listed below:

Mol	Chain	Res	Type	Atoms	Z	Observed(Å)	Ideal(Å)
3	C	5	MAN	C1-C2	2.52	1.58	1.52
3	D	4	MAN	C1-C2	2.43	1.57	1.52

All (9) bond angle outliers are listed below:

Mol	Chain	Res	Type	Atoms	Z	Observed(°)	Ideal(°)
3	C	3	BMA	C1-C2-C3	-3.94	104.82	109.67
3	C	3	BMA	O3-C3-C2	3.87	117.41	109.99
3	D	4	MAN	C1-O5-C5	3.42	116.82	112.19
3	D	5	MAN	C1-O5-C5	3.12	116.42	112.19
3	C	5	MAN	C1-O5-C5	2.85	116.05	112.19

Continued on next page...

*Continued from previous page...*

Mol	Chain	Res	Type	Atoms	Z	Observed(°)	Ideal(°)
3	C	4	MAN	C1-O5-C5	2.52	115.61	112.19
3	C	5	MAN	O2-C2-C3	-2.30	105.54	110.14
3	D	4	MAN	O2-C2-C3	-2.20	105.74	110.14
3	C	4	MAN	O2-C2-C3	-2.08	105.98	110.14

There are no chirality outliers.

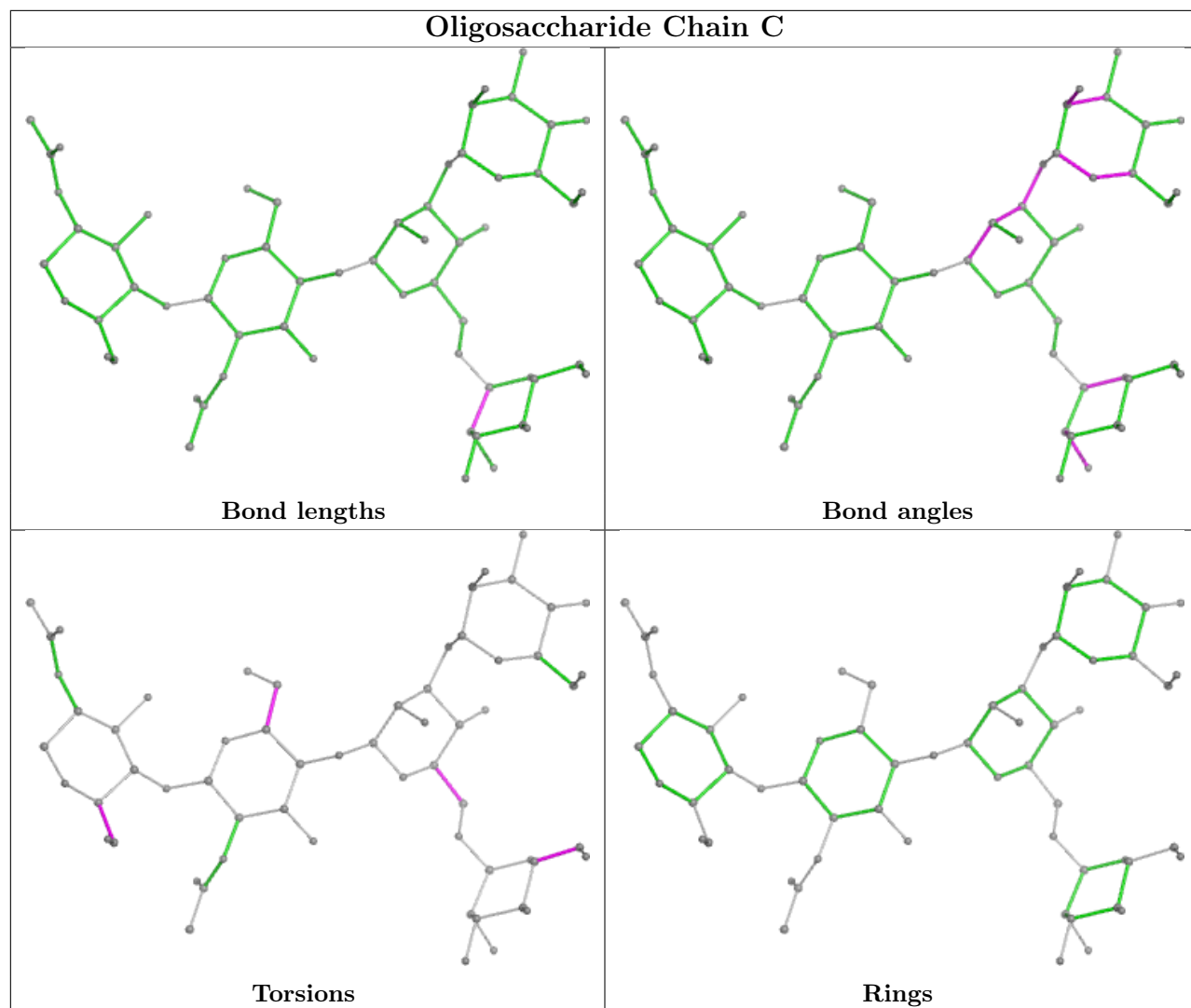
All (10) torsion outliers are listed below:

Mol	Chain	Res	Type	Atoms
3	C	2	NAG	O5-C5-C6-O6
3	C	3	BMA	O5-C5-C6-O6
3	C	2	NAG	C4-C5-C6-O6
3	C	3	BMA	C4-C5-C6-O6
3	C	1	NAG	O5-C5-C6-O6
3	C	1	NAG	C4-C5-C6-O6
3	C	5	MAN	O5-C5-C6-O6
3	D	1	NAG	C1-C2-N2-C7
3	D	3	BMA	C4-C5-C6-O6
3	D	3	BMA	O5-C5-C6-O6

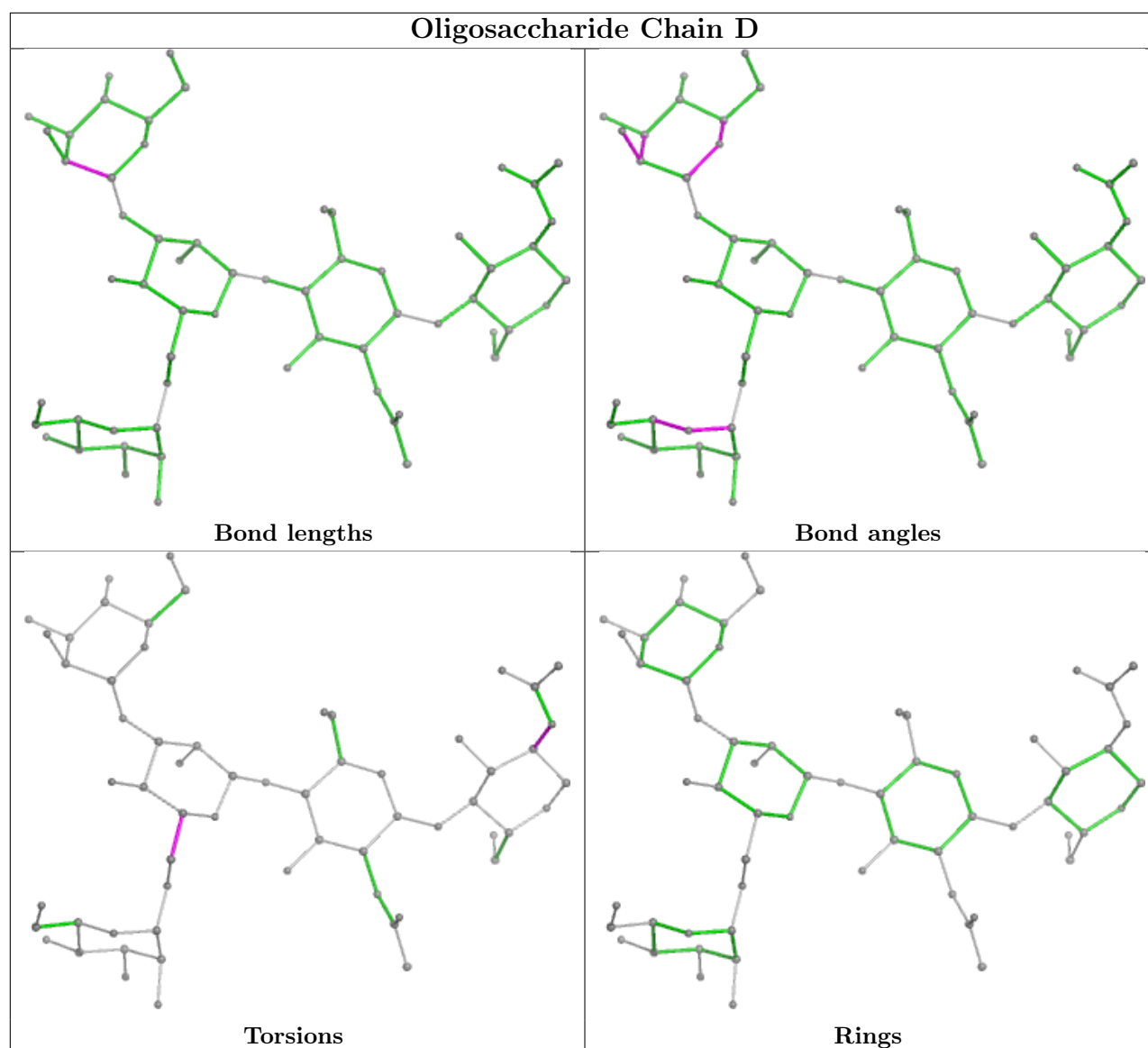
There are no ring outliers.

No monomer is involved in short contacts.

The following is a two-dimensional graphical depiction of Mogul quality analysis of bond lengths, bond angles, torsion angles, and ring geometry for oligosaccharide.







## 5.6 Ligand geometry [i](#)

4 ligands are modelled in this entry.

In the following table, the Counts columns list the number of bonds (or angles) for which Mogul statistics could be retrieved, the number of bonds (or angles) that are observed in the model and the number of bonds (or angles) that are defined in the Chemical Component Dictionary. The Link column lists molecule types, if any, to which the group is linked. The Z score for a bond length (or angle) is the number of standard deviations the observed value is removed from the expected value. A bond length (or angle) with  $|Z| > 2$  is considered an outlier worth inspection. RMSZ is the root-mean-square of all Z scores of the bond lengths (or angles).

Mol	Type	Chain	Res	Link	Bond lengths			Bond angles		
					Counts	RMSZ	$\# Z  > 2$	Counts	RMSZ	$\# Z  > 2$
4	NAG	A	1002	1	14,14,15	0.44	0	17,19,21	0.76	0

Mol	Type	Chain	Res	Link	Bond lengths			Bond angles		
					Counts	RMSZ	# Z  > 2	Counts	RMSZ	# Z  > 2
4	NAG	A	1001	1	14,14,15	0.22	0	17,19,21	0.58	0
4	NAG	A	1000	1	14,14,15	0.23	0	17,19,21	0.78	0
4	NAG	A	1003	1	14,14,15	0.60	1 (7%)	17,19,21	0.44	0

In the following table, the Chirals column lists the number of chiral outliers, the number of chiral centers analysed, the number of these observed in the model and the number defined in the Chemical Component Dictionary. Similar counts are reported in the Torsion and Rings columns. '-' means no outliers of that kind were identified.

Mol	Type	Chain	Res	Link	Chirals	Torsions	Rings
4	NAG	A	1002	1	-	2/6/23/26	0/1/1/1
4	NAG	A	1001	1	-	2/6/23/26	0/1/1/1
4	NAG	A	1000	1	-	1/6/23/26	0/1/1/1
4	NAG	A	1003	1	-	4/6/23/26	0/1/1/1

All (1) bond length outliers are listed below:

Mol	Chain	Res	Type	Atoms	Z	Observed(Å)	Ideal(Å)
4	A	1003	NAG	C1-C2	2.04	1.55	1.52

There are no bond angle outliers.

There are no chirality outliers.

All (9) torsion outliers are listed below:

Mol	Chain	Res	Type	Atoms
4	A	1002	NAG	O5-C5-C6-O6
4	A	1002	NAG	C4-C5-C6-O6
4	A	1003	NAG	C1-C2-N2-C7
4	A	1000	NAG	C3-C2-N2-C7
4	A	1003	NAG	C4-C5-C6-O6
4	A	1001	NAG	C4-C5-C6-O6
4	A	1003	NAG	O5-C5-C6-O6
4	A	1001	NAG	O5-C5-C6-O6
4	A	1003	NAG	C3-C2-N2-C7

There are no ring outliers.

1 monomer is involved in 1 short contact:

Mol	Chain	Res	Type	Clashes	Symm-Clashes
4	A	1003	NAG	1	0

## 5.7 Other polymers [i](#)

There are no such residues in this entry.

## 5.8 Polymer linkage issues [i](#)

There are no chain breaks in this entry.

## 6 Fit of model and data

### 6.1 Protein, DNA and RNA chains

In the following table, the column labelled ‘#RSRZ > 2’ contains the number (and percentage) of RSRZ outliers, followed by percent RSRZ outliers for the chain as percentile scores relative to all X-ray entries and entries of similar resolution. The OWAB column contains the minimum, median, 95<sup>th</sup> percentile and maximum values of the occupancy-weighted average B-factor per residue. The column labelled ‘Q < 0.9’ lists the number of (and percentage) of residues with an average occupancy less than 0.9.

Mol	Chain	Analysed	<RSRZ>	#RSRZ>2	OWAB(Å <sup>2</sup> )	Q<0.9
1	A	512/715 (71%)	-0.12	10 (1%) 64 63	39, 62, 125, 188	0
2	B	510/578 (88%)	-0.06	22 (4%) 40 38	36, 64, 153, 248	0
All	All	1022/1293 (79%)	-0.09	32 (3%) 51 48	36, 63, 139, 248	0

All (32) RSRZ outliers are listed below:

Mol	Chain	Res	Type	RSRZ
2	B	251	VAL	4.2
2	B	463	VAL	4.0
1	A	287	PRO	3.5
2	B	510	HIS	3.4
1	A	570	THR	3.2
1	A	426	SER	3.2
2	B	253	ASN	3.0
2	B	361	LEU	2.9
1	A	573	CYS	2.9
1	A	197	PRO	2.9
2	B	462	THR	2.9
2	B	249	MET	2.8
1	A	283	HIS	2.8
2	B	385	SER	2.7
1	A	200	PRO	2.6
2	B	461	SER	2.4
2	B	569	HIS	2.4
1	A	457	TYR	2.3
2	B	57	SER	2.3
2	B	214	ASN	2.3
2	B	457	THR	2.3
1	A	528	THR	2.3
1	A	285	SER	2.1
2	B	254	PHE	2.1

*Continued on next page...*

*Continued from previous page...*

Mol	Chain	Res	Type	RSRZ
2	B	358	SER	2.1
2	B	512	SER	2.0
2	B	460	ASN	2.0
2	B	360	TRP	2.0
2	B	547	PHE	2.0
2	B	545	HIS	2.0
2	B	568	PRO	2.0
2	B	252	MET	2.0

## 6.2 Non-standard residues in protein, DNA, RNA chains [i](#)

There are no non-standard protein/DNA/RNA residues in this entry.

## 6.3 Carbohydrates [i](#)

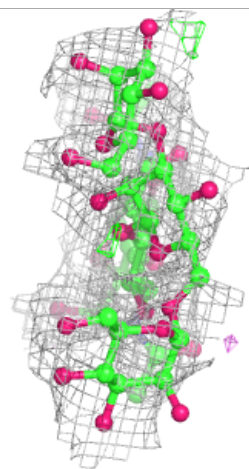
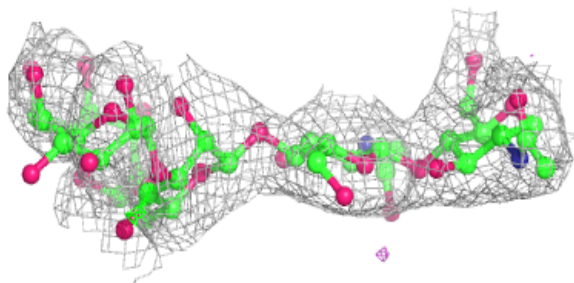
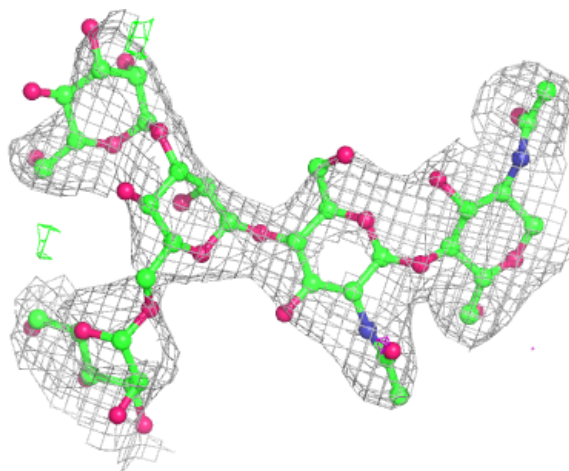
In the following table, the Atoms column lists the number of modelled atoms in the group and the number defined in the chemical component dictionary. The B-factors column lists the minimum, median, 95<sup>th</sup> percentile and maximum values of B factors of atoms in the group. The column labelled 'Q< 0.9' lists the number of atoms with occupancy less than 0.9.

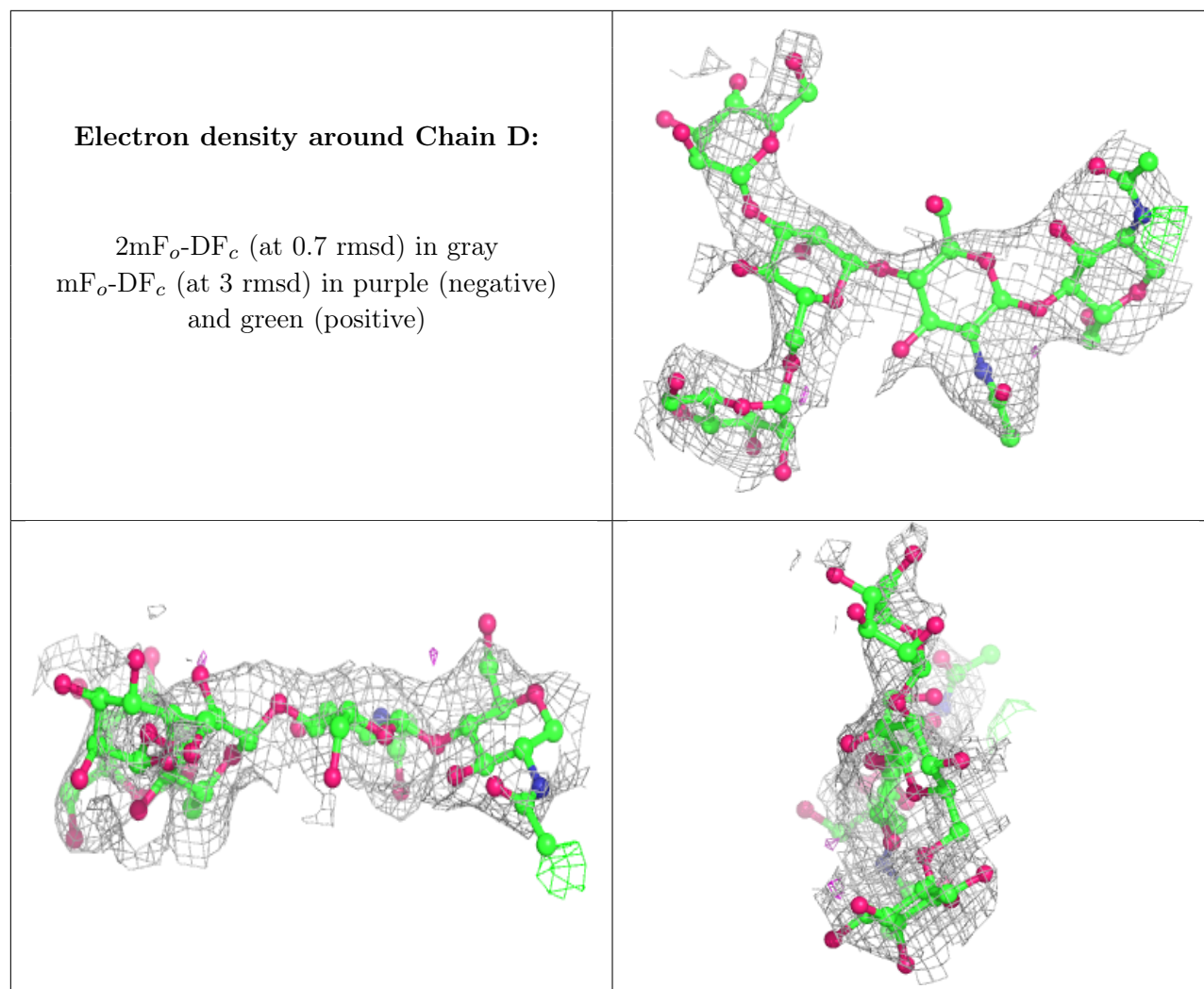
Mol	Type	Chain	Res	Atoms	RSCC	RSR	B-factors( $\text{\AA}^2$ )	Q<0.9
3	MAN	D	5	11/12	0.39	0.12	141,158,167,168	0
3	MAN	C	5	11/12	0.60	0.11	114,165,172,174	0
3	MAN	C	4	11/12	0.60	0.12	105,125,136,136	0
3	MAN	D	4	11/12	0.63	0.10	124,165,183,187	0
3	BMA	D	3	11/12	0.64	0.10	170,177,186,188	0
3	BMA	C	3	11/12	0.75	0.10	136,144,162,168	0
3	NAG	D	2	14/15	0.79	0.11	103,136,148,162	0
3	NAG	D	1	14/15	0.81	0.13	97,114,119,128	0
3	NAG	C	2	14/15	0.89	0.11	66,83,105,123	0
3	NAG	C	1	14/15	0.95	0.06	43,54,70,83	0

The following is a graphical depiction of the model fit to experimental electron density for oligosaccharide. Each fit is shown from different orientation to approximate a three-dimensional view.

**Electron density around Chain C:**

$2mF_o-DF_c$  (at 0.7 rmsd) in gray  
 $mF_o-DF_c$  (at 3 rmsd) in purple (negative)  
and green (positive)





## 6.4 Ligands [i](#)

In the following table, the Atoms column lists the number of modelled atoms in the group and the number defined in the chemical component dictionary. The B-factors column lists the minimum, median, 95<sup>th</sup> percentile and maximum values of B factors of atoms in the group. The column labelled 'Q< 0.9' lists the number of atoms with occupancy less than 0.9.

Mol	Type	Chain	Res	Atoms	RSCC	RSR	B-factors( $\text{\AA}^2$ )	Q<0.9
4	NAG	A	1002	14/15	0.57	0.17	102,140,163,169	0
4	NAG	A	1003	14/15	0.62	0.14	139,149,156,156	0
4	NAG	A	1001	14/15	0.70	0.12	96,121,126,128	0
4	NAG	A	1000	14/15	0.89	0.10	88,101,114,124	0

## 6.5 Other polymers [i](#)

There are no such residues in this entry.