



Full wwPDB EM Validation Report ⓘ

Nov 7, 2022 – 10:51 PM EST

PDB ID : 6DR0
EMDB ID : EMD-7987
Title : Class 5 IP3-bound human type 3 1,4,5-inositol trisphosphate receptor
Authors : Hite, R.K.; Paknejad, N.
Deposited on : 2018-06-11
Resolution : 4.47 Å (reported)

This is a Full wwPDB EM Validation Report for a publicly released PDB entry.

We welcome your comments at validation@mail.wwpdb.org

A user guide is available at

<https://www.wwpdb.org/validation/2017/EMValidationReportHelp>

with specific help available everywhere you see the ⓘ symbol.

The types of validation reports are described at

<http://www.wwpdb.org/validation/2017/FAQs#types>.

The following versions of software and data (see [references ⓘ](#)) were used in the production of this report:

EMDB validation analysis : 0.0.1.dev43
Mogul : 1.8.5 (274361), CSD as541be (2020)
MolProbity : 4.02b-467
buster-report : 1.1.7 (2018)
Percentile statistics : 20191225.v01 (using entries in the PDB archive December 25th 2019)
MapQ : 1.9.9
Ideal geometry (proteins) : Engh & Huber (2001)
Ideal geometry (DNA, RNA) : Parkinson et al. (1996)
Validation Pipeline (wwPDB-VP) : 2.31.2

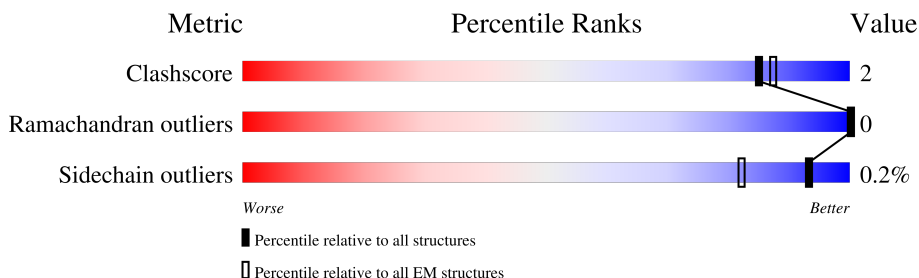
1 Overall quality at a glance i

The following experimental techniques were used to determine the structure:

ELECTRON MICROSCOPY

The reported resolution of this entry is 4.47 Å.

Percentile scores (ranging between 0-100) for global validation metrics of the entry are shown in the following graphic. The table shows the number of entries on which the scores are based.



Metric	Whole archive (#Entries)	EM structures (#Entries)
Clashscore	158937	4297
Ramachandran outliers	154571	4023
Sidechain outliers	154315	3826

The table below summarises the geometric issues observed across the polymeric chains and their fit to the map. The red, orange, yellow and green segments of the bar indicate the fraction of residues that contain outliers for ≥ 3 , 2, 1 and 0 types of geometric quality criteria respectively. A grey segment represents the fraction of residues that are not modelled. The numeric value for each fraction is indicated below the corresponding segment, with a dot representing fractions $\leq 5\%$. The upper red bar (where present) indicates the fraction of residues that have poor fit to the EM map (all-atom inclusion $< 40\%$). The numeric value is given above the bar.

Mol	Chain	Length	Quality of chain
1	A	2671	
1	B	2671	
1	C	2671	
1	D	2671	

2 Entry composition [i](#)

There are 3 unique types of molecules in this entry. The entry contains 140024 atoms, of which 70049 are hydrogens and 0 are deuteriums.

In the tables below, the AltConf column contains the number of residues with at least one atom in alternate conformation and the Trace column contains the number of residues modelled with at most 2 atoms.

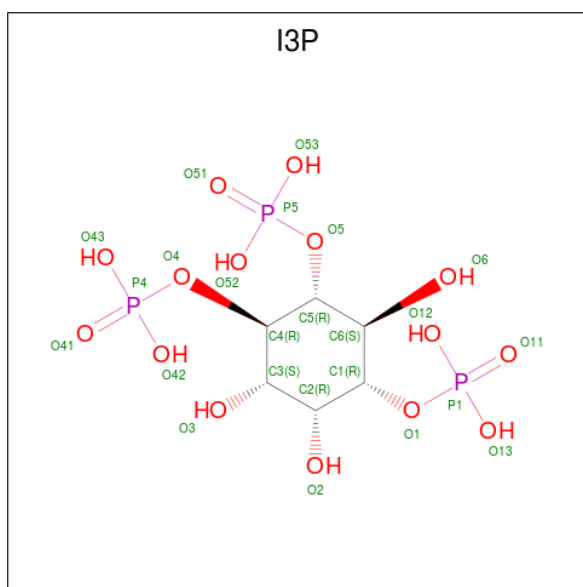
- Molecule 1 is a protein called Inositol 1,4,5-trisphosphate receptor type 3.

Mol	Chain	Residues	Atoms					AltConf	Trace	
			Total	C	H	N	O			S
1	A	2188	35063	11176	17553	3000	3228	106	0	0
1	B	2188	35065	11176	17555	3000	3228	106	0	0
1	C	2193	35140	11199	17593	3006	3236	106	0	0
1	D	2181	34620	11035	17312	2979	3191	103	0	0

- Molecule 2 is ZINC ION (three-letter code: ZN) (formula: Zn).

Mol	Chain	Residues	Atoms		AltConf
			Total	Zn	
2	A	1	1	1	0
2	B	1	1	1	0
2	C	1	1	1	0
2	D	1	1	1	0

- Molecule 3 is D-MYO-INOSITOL-1,4,5-TRIPHOSPHATE (three-letter code: I3P) (formula: $C_6H_{15}O_{15}P_3$).

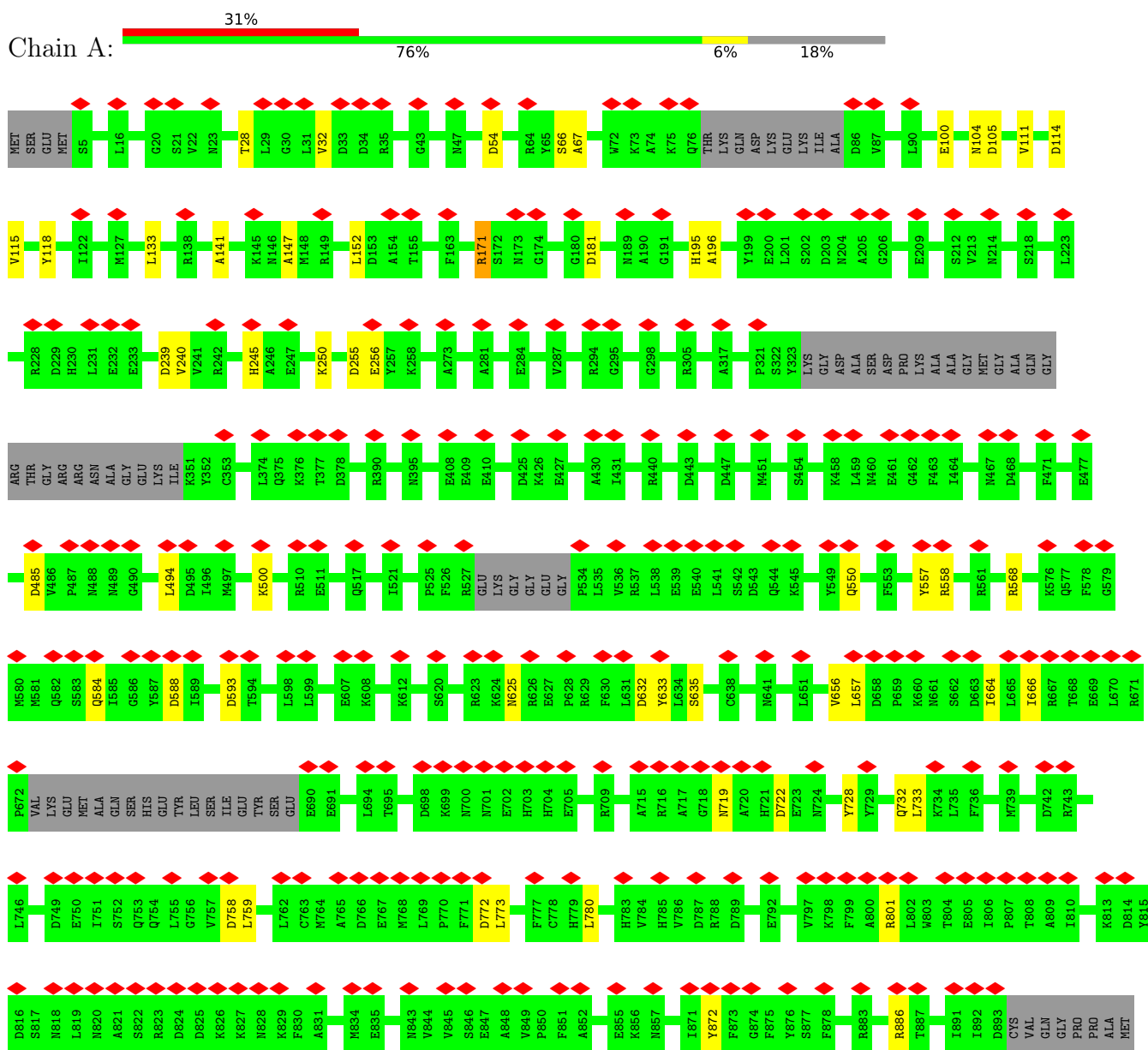


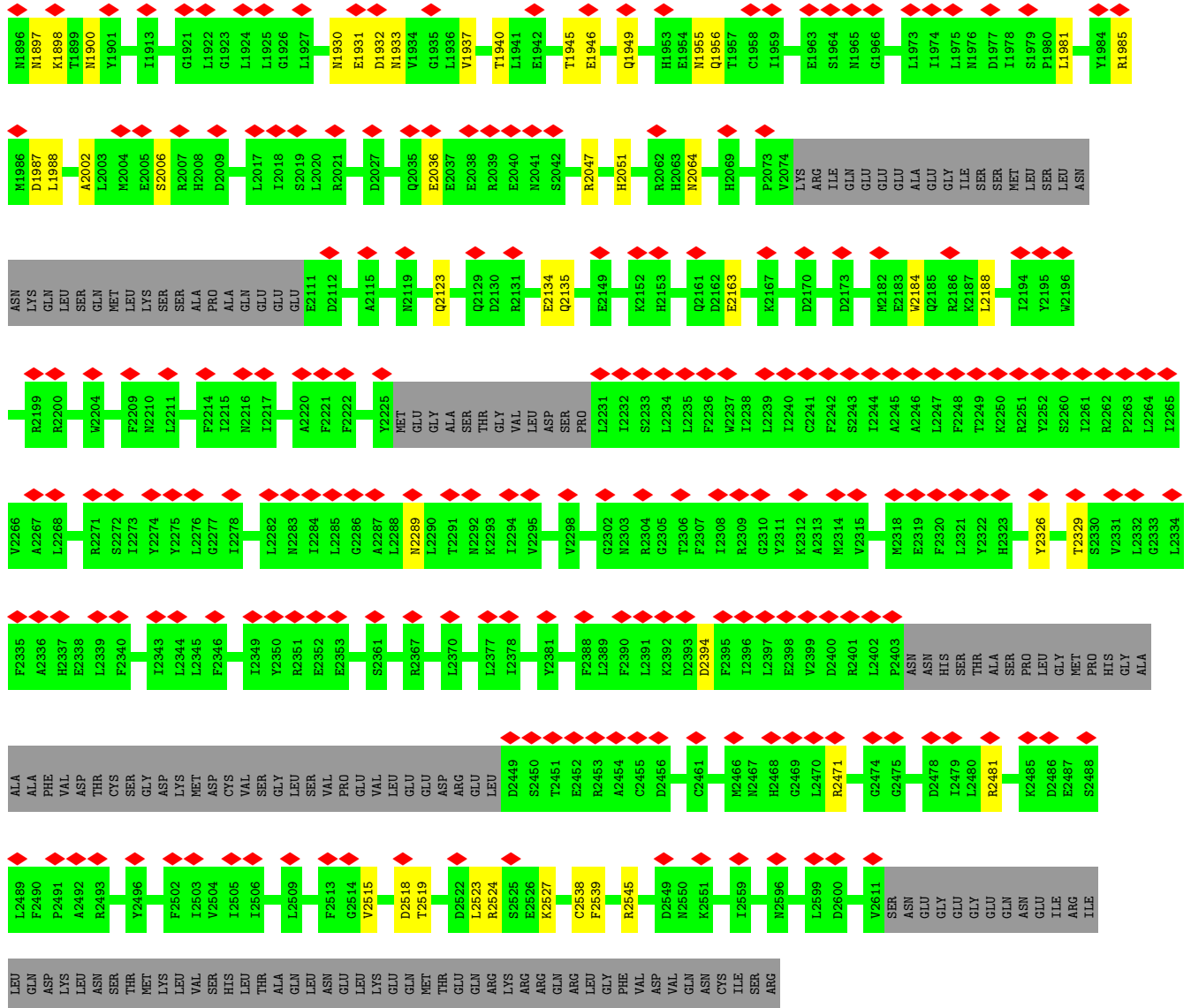
Mol	Chain	Residues	Atoms					AltConf
			Total	C	H	O	P	
3	A	1	Total	C	H	O	P	0
			33	6	9	15	3	
3	B	1	Total	C	H	O	P	0
			33	6	9	15	3	
3	C	1	Total	C	H	O	P	0
			33	6	9	15	3	
3	D	1	Total	C	H	O	P	0
			33	6	9	15	3	

3 Residue-property plots [i](#)

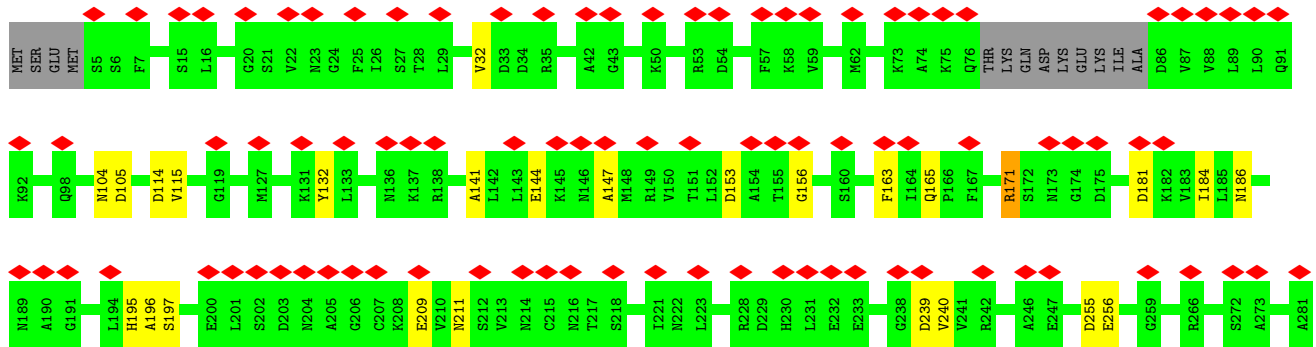
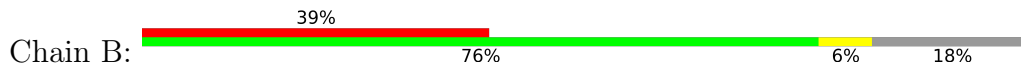
These plots are drawn for all protein, RNA, DNA and oligosaccharide chains in the entry. The first graphic for a chain summarises the proportions of the various outlier classes displayed in the second graphic. The second graphic shows the sequence view annotated by issues in geometry and atom inclusion in map density. Residues are color-coded according to the number of geometric quality criteria for which they contain at least one outlier: green = 0, yellow = 1, orange = 2 and red = 3 or more. A red diamond above a residue indicates a poor fit to the EM map for this residue (all-atom inclusion < 40%). Stretches of 2 or more consecutive residues without any outlier are shown as a green connector. Residues present in the sample, but not in the model, are shown in grey.

- Molecule 1: Inositol 1,4,5-trisphosphate receptor type 3

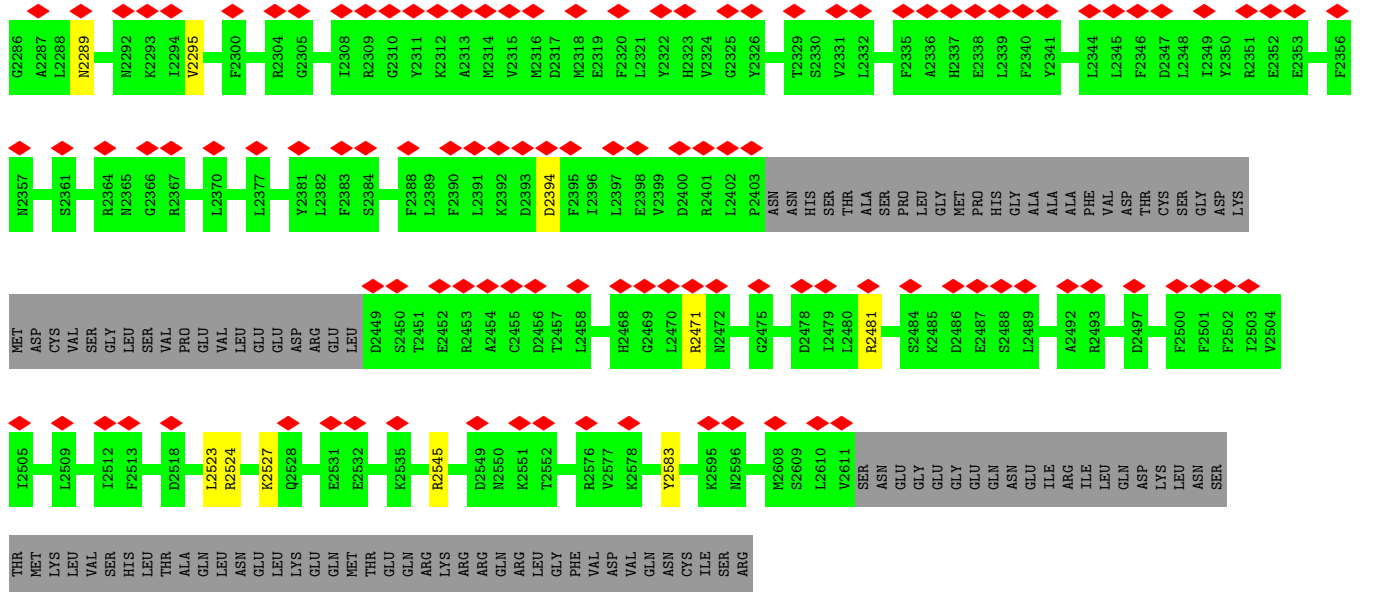




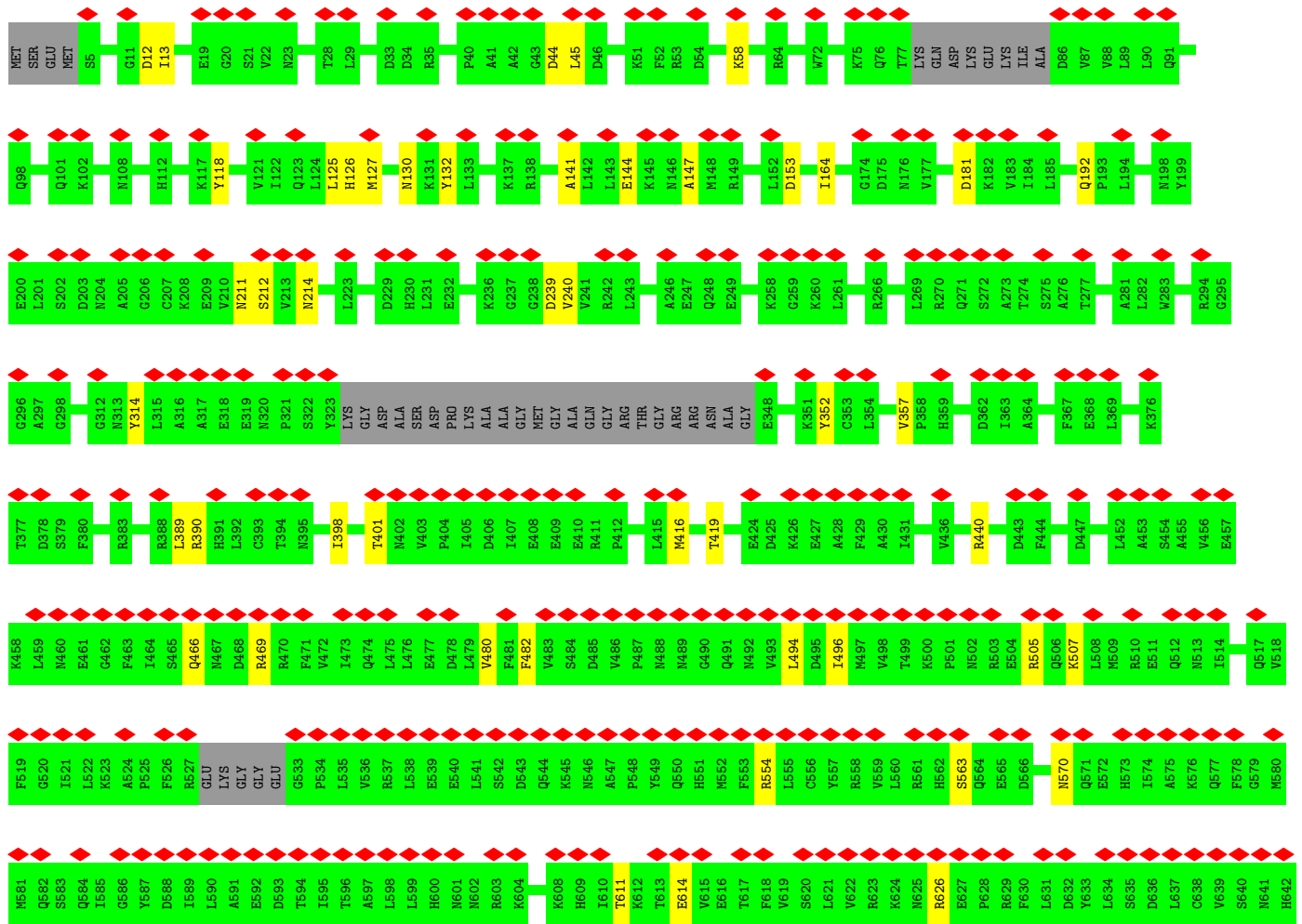
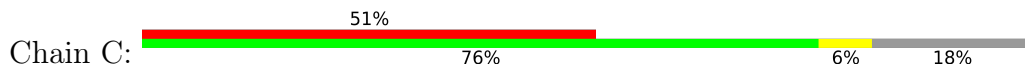
• Molecule 1: Inositol 1,4,5-trisphosphate receptor type 3



L1269	L1270	Q1273	L1274	C1275	S1276	E1277	E1280	P1281	V1282	H1285	F1286	V1287	H1288	L1289	L1290	H1293	G1294	R1295	H1296	V1297	Q1298	V1299	F1302	L1303	H1304	T1305	K1308	A1309	E1310	G1311	K1312	Y1313	V1314	K1315	K1316	C1317	Q1318	D1319	M1320	I1321	M1322	T1323	E1324	M1327	A1328	G1329	D1330	D1331	V1332	V1333	V1334	F1335				
Y1336	M1337	D1338	K1339	A1340	S1341	L1342	A1343	H1344	L1345	L1346	D1347	M1348	M1349	K1350	A1351	A1352	R1353	D1354	G1355	V1356	E1357	D1358	H1359	H1365	I1366	S1367	D1370	L1371	L1372	A1373	A1374	C1375	A1376	E1377	G1378	K1379	N1380	V1381	Y1382	T1383	E1384	Q1385	K1386	C1387	L1390	L1391	E1394	D1395	V1396	V1397	S1398	V1399	V1400	T1401	H1402	
E1403	D1404	C1405	I1406	T1407	E1408	V1409	K1410	M1411	A1412	Y1413	V1414	M1418	H1419	C1420	Y1421	V1422	D1423	T1424	E1425	V1426	E1427	M1428	K1429	E1430	T1433	S1434	M1435	H1436	I1437	T1439	L1440	F1441	E1442	M1443	F1444	L1446	D1447	M1448	A1449	R1450	V1451	C1452	S1453	K1454	R1455	GLU	LYS	ARG	VAL	ALA	ASP	PRO	T1463	L1464	E1465	
K1466	Y1467	V1468	L1469	S1470	V1471	V1472	L1473	D1474	T1475	I1476	M1477	A1478	F1479	F1480	S1481	S1482	PHE	SER	GLU	ASN	THR	SER	LEU	GLN	THR	HIS	GLN	ILE	VAL	VAL	GLN	LEU	GLN	LEU	ARG	LEU	LEU	CYS	PRO	TRP	LEU	GLN	GLN	GLN	HIS	LYS	C1452	S1453	VAL	VAL	GLU	ALA	CYS			
ILE	ARG	THR	LEU	A1490	M1491	V1492	A1493	K1494	G1495	R1496	A1497	I1498	L1499	L1500	P1501	M1502	D1503	L1504	D1505	A1506	H1507	I1508	SER	MET	LEU	SER	GLY	A1515	S1516	C1517	A1518	A1519	A1520	A1521	Q1522	R1523	M1524	S1526	S1527	Y1528	K1529	A1530	I1531	T1532	R1533	A1541	F1542	P1543	R1544	V1545	V1546	P1547	T1548	A1549	N1550	Q1551
M1552	D1587	Y1588	I1591	I1592	E1593	K1594	Q1596	D1597	A1601	E1604	R1605	V1610	E1613	V1616	H1622	L1627	F1628	L1629	E1630	G1631	Q1636	R1637	C1638	E1639	S1640	G1641	G1642	F1643	K1646	L1647	I1648	D1653	L1654	M1655	E1656	S1657	E1658	I1663	K1664	V1665	L1666	R1667	K1675	K1676	T1677											
K1678	Y1679	G1680	D1681	Q1685	K1686	M1689	Q1692	M1693	Q1696	ASN	ARG	LYS	SER	THR	ARG	GLY	ASP	PRO	ASP	PRO	ILE	GLY	THR	GLY	LEU	ASP	PRO	PRO	ASP	ASP	W1718	A1720	A1723	D1729	K1730	E1731	K1735	C1738	D1739	S1743	E1747	E1752	G1755	D1762												
K1770	H1773	M1777	S1778	D1779	R1784	F1785	F1786	K1787	D1791	A1796	E1799	T1800	K1801	S1802	T1803	V1804	ALA	VAL	ASN	MET	ASN	ASP	LEU	GLY	SER	GLN	PRO	HIS	PRO	GLU	ASP	W1718	A1720	VAL	ASP	PRO	THR	THR	GLY	ARG	VAL	ALA	SER	PHE	SER	ILE	PRO	GLY	SER	SER	ARG					
T1940	L1941	E1942	E1946	Q1949	C1952	M1955	Q1956	T1957	C1958	T1961	H1962	E1963	S1964	M1965	G1966	I1970	T1971	A1972	L1973	M1976	D1977	L1981	C1982	K1983	Y1984	R1985	L2000	L2001	A2002	E2005	S2006	R2007	H2008	A2013	E2014	R2015	I2018	S2019	L2020	R2021	P2022	Q2023	D2027	K2031												
Q2035	E2036	E2037	E2038	R2039	E2040	N2041	S2042	E2043	R2047	H2051	N2052	L2053	Y2054	L2055	L2056	A2057	R2062	H2063	N2064	K2065	H2069	P2073	LYS	ARG	ILE	GLN	GLU	GLU	ALA	GLU	ILE	SER	SER	MET	LEU	SER	LEU	ASN	ASN	LYS	GLN	LEU	MET	LEU	LYS	SER	SER	ALA								
PRO	ALA	GLN	GLU	GLU	GLU	E2111	A2115	Q2123	I2124	E2125	E2134	Q2135	G2142	Q2145	F2146	L2147	T2148	E2149	E2150	T2151	R2154	E2163	K2167	D2173	R2186	K2187	L2188	R2189	S2190	M2191	F2197	S2198	R2199	R2200	M2201	T2202	L2203	V2204	G2205	F2209	N2210	L2211	A2212	V2213	F2214	A2220										
F2221	V2225	MET	GLU	GLY	ALA	SER	THR	GLY	VAL	LEU	ASP	PRO	L2231	L2232	S2233	L2234	L2235	F2236	W2237	L2238	L2239	L2240	C2241	F2242	S2243	L2244	A2245	A2246	L2247	F2248	T2249	K2250	R2251	V2252	S2260	L2261	R2262	P2263	L2264	V2266	A2267	L2268	L2269	L2270	R2271	S2272	L2273	V2274	V2275	G2279	P2280	N2283	L2284	L2285		

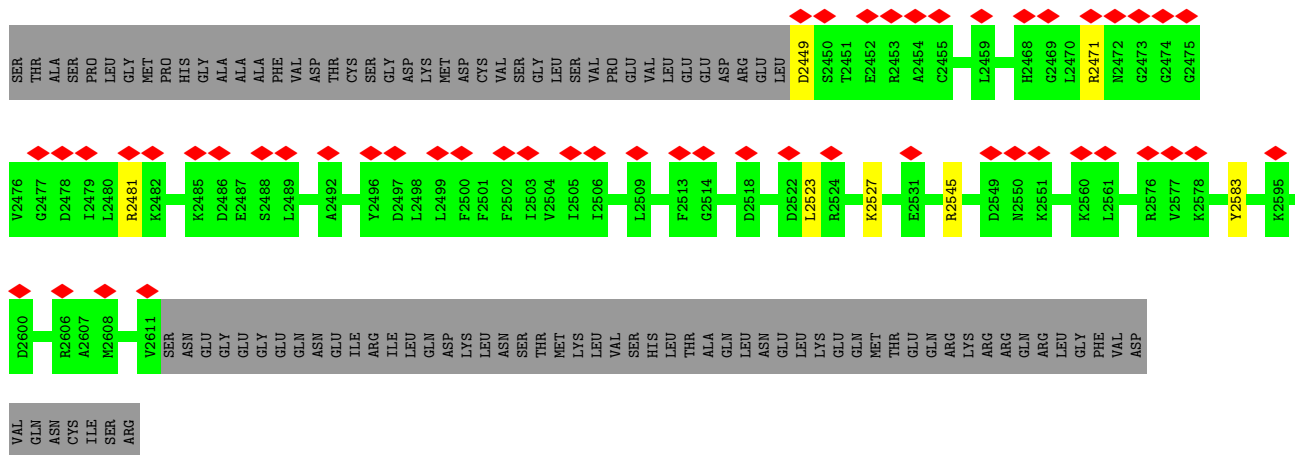


• Molecule 1: Inositol 1,4,5-trisphosphate receptor type 3

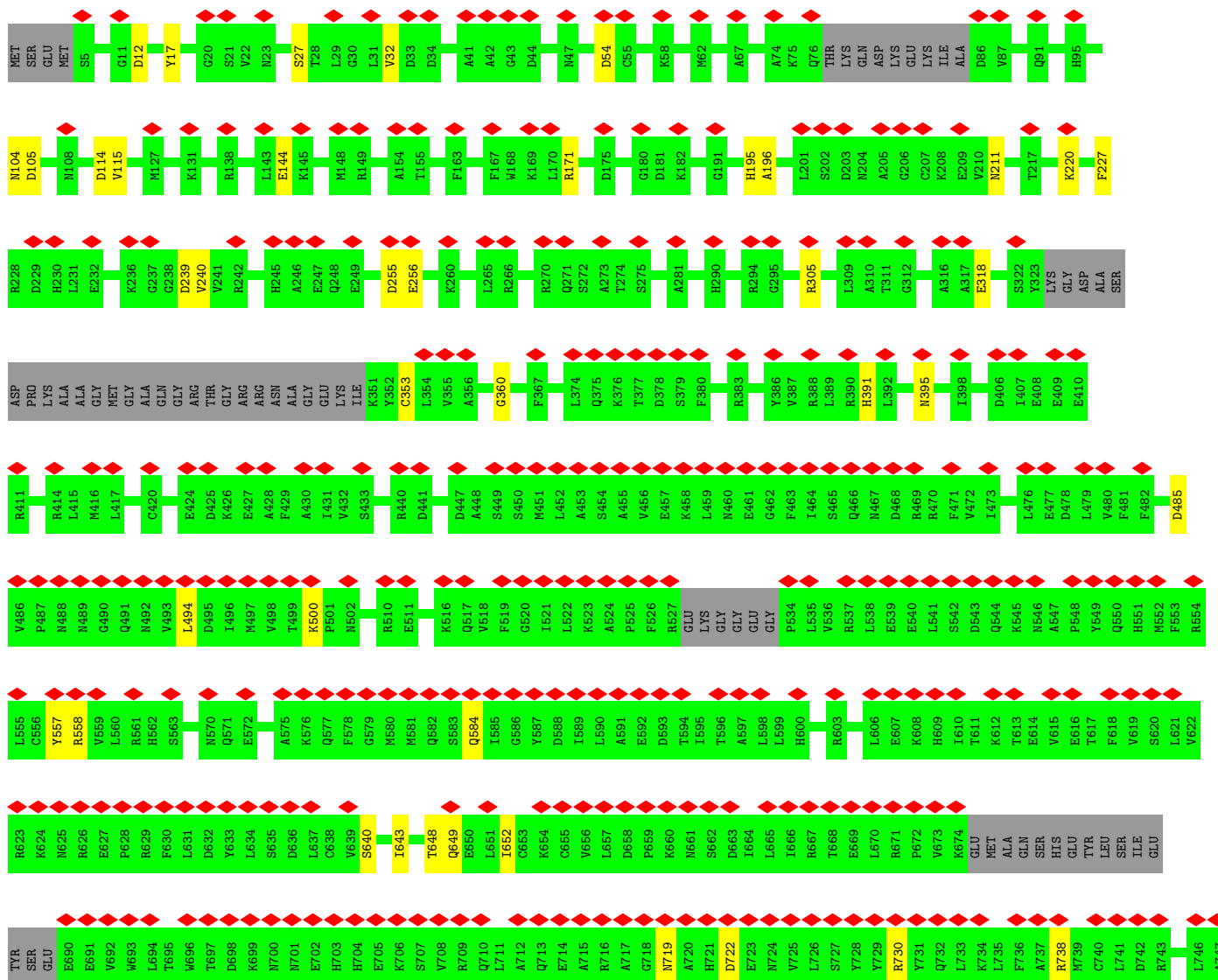
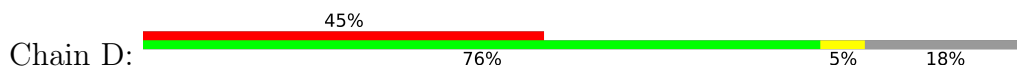


I643	A644	T648	Q649	E650	L651	K654	C655	V656	L657	D658	P659	K660	M661	S662	D663	I664	L665	I666	R667	T668	E669	L670	R671	P672	VAL	LYS	GLU	MET	GLN	ALA	SER	HIS	THR	LEU	TRP	LEU	SER	ILE	GLY	TYR	GLU	E690	E691	L694	T695	M696	T697	D698	K699	N700	N701	E702	H703	H704	E705	K706					
S707	V708	R709	Q710	L711	A712	Q713	E714	R715	R716	A717	Q718	N719	A720	H721	D722	E723	N724	V725	L726	S727	V728	V729	R730	V731	Q732	L733	F736	A737	R801	R738	M739	C740	L741	D742	R743	Q744	Y745	T808	L746	A747	I748	D749	E750	I751	S752	Y815	Q753	Q754	L755	D758	L759	I760	F761	L762	D824	C763	M764	A765	D766	E767	M768
L769	P770	F771	D772	L773	R774	A775	S776	F777	H779	L780	M781	L782	H783	V784	H785	R788	Q791	E792	L793	V794	T795	P796	V797	K798	F799	A800	R801	L802	W803	T804	E805	I806	P807	T808	A809	G874	I810	I811	I812	K813	D814	Y815	D816	S817	N818	L819	N820	A821	S822	R823	D824	D825	K826	K827	N828	K829	F830				
A831	N832	T833	M834	E835	F836	V837	E838	D839	Y840	N841	N842	N843	V844	V845	S846	E847	A848	F851	A852	N853	E854	E855	K856	N857	K858	L859	T860	F861	E862	H868	N869	L870	I871	Y872	F873	F874	F875	Y876	Y877	F878	S879	L880	L881	L882	L883	L884	T885	R886	T887	L888	L889	G890	I891	I892	D893	CYS	VAL				
GLN	GLY	PRO	ALA	MET	LEU	GLN	TYR	ASP	PRO	GLY	LYS	ASN	VAL	ARG	ARG	SER	ILE	GLN	VAL	GLY	HIS	MET	SER	THR	MET	LEU	SER	ARG	ALA	PRO	LEU	SER	LEU	SER	GLY	ALA	GLY	GLY	ALA	ALA	PRO	LEU	ASP	ARG	SER	LYS															
PHE	GLU	GLU	ASN	GLU	D961	I962	V963	N964	M965	E966	T967	K968	L969	L972	E973	I974	L975	Q976	F977	V981	R982	L983	D984	Y985	R986	I987	S988	Y989	L990	L991	S992	V993	F994	K995	K996	E997	F998	V999	E1000	V1001	F1002	P1003	MET	GLN	ASP	SER	GLY	ALA	GLY	GLY	THR	ALA	PRO	ALA	PHE	ASP	SER				
THR	THR	ALA	ASN	MET	M1024	L1025	D1026	R1027	I1028	G1029	E1030	Q1031	A1032	E1033	A1034	M1035	F1036	G1037	VAL	GLY	THR	SER	S1043	M1044	L1045	E1046	V1047	D1048	D1049	I1050	G1051	G1052	R1053	M1054	F1055	L1056	R1057	V1058	L1059	I1060	H1061	M1064	H1065	D1066	Y1067	A1068	P1069	L1070	V1071	G1072	G1073	A1074	L1075	L1078	F1079	K1080					
H1081	F1082	R1085	Q1086	E1087	M1088	M1089	H1090	T1091	F1092	Q1093	V1095	Q1096	L1097	L1098	I1099	S1100	A1101	Q1102	D1103	V1104	E1105	M1106	Y1107	K1108	V1109	I1110	K1111	S1112	L1113	L1114	D1115	R1116	L1117	R1118	T1119	M1120	V1121	E1122	K1123	S1124	E1125	L1126	V1127	V1128	L1129	LYS	LYS	GLY	SER	GLY	LYS	GLY	GLU	VAL	ALA						
GLY	ALA	LYS	ASP	LYS	GLU	ARG	THR	ASP	GLU	GLY	PHE	HIS	PRO	PRO	GLY	GLU	LYS	SER	S1166	E1167	M1168	Y1169	Q1170	I1171	V1172	K1173	G1174	I1175	L1176	E1177	L1178	M1180	K1181	M1182	C1183	G1184	V1185	G1186	E1187	Q1188	M1189	R1190	K1191	K1192	Q1193	Q1194	L1195	L1196	L1197	K1198	M1199	M1200	D1201								
A1202	H1203	K1204	V1205	M1206	L1207	D1208	L1209	L1210	Q1211	I1212	P1213	Y1214	D1215	K1216	G1217	D1218	A1219	K1220	M1221	M1222	E1223	I1224	L1225	R1226	Y1227	T1228	H1229	Q1230	F1231	L1232	Q1233	K1234	F1235	C1236	A1237	G1238	M1239	P1240	G1241	M1242	Q1243	A1244	L1245	L1246	H1247	K1248	H1249	L1250	H1251	L1252	F1253	L1254	T1255	P1256	G1257	L1258	L1259	E1260	A1261		
E1262	T1263	M1264	Q1265	H1266	I1267	F1268	L1269	M1270	N1271	Y1272	Q1273	L1274	C1275	S1276	E1277	S1279	E1280	P1281	L1282	V1283	Q1284	H1285	F1286	V1287	H1288	L1289	L1290	A1291	T1292	L1293	G1294	R1295	H1296	V1297	Q1298	Y1299	L1300	D1301	F1302	L1303	H1304	T1305	V1306	I1307	K1308	A1309	E1310	G1311	K1312	Y1313	F1314	K1315	K1316	C1317	Q1318	D1319	M1320	I1321			
M1322	T1323	E1324	L1325	M1326	T1327	A1328	G1329	D1330	D1331	V1332	V1333	F1334	F1335	Y1336	M1337	D1338	K1339	A1340	S1341	L1342	A1343	H1344	L1345	L1346	D1347	M1348	M1349	K1350	A1351	A1352	R1353	D1354	V1355	V1356	E1357	L1358	H1359	S1360	P1361	L1362	M1363	Y1364	H1365	I1366	S1367	L1368	V1369	D1370	L1371	L1372	A1373	C1374	A1375	A1376	E1377	G1378	K1379	M1380	V1381		
Y1382	T1383	E1384	L1385	K1386	G1387	T1388	S1389	L1390	L1391	P1392	L1393	E1394	L1395	V1396	V1397	S1398	K1399	V1400	T1401	H1402	E1403	D1404	C1405	I1406	L1407	E1408	V1409	K1410	M1411	A1412	Y1413	V1414	N1415	F1416	V1417	M1418	H1419	C1420	Y1421	V1422	D1423	T1424	E1425	V1426	E1427	M1428	K1429	E1430	T1431	Y1432	T1433	S1434	L1435	H1436	T1437	V1438	L1439	L1440	F1441		

E1442	N1443	F1444	T1445	L1446	D1447	M1448	A1449	R1450	L1451	C1452	S1453	K1454	R1455	GLU	LYS	ARG	VAL	ALA	ASP	PRO	T1463	L1464	E1465	K1466	Y1467	V1468	L1469	S1470	V1471	V1472	L1473	D1474	T1475	I1476	N1477	A1478	F1479	F1480	S1481	S1482	F1483	PHE	SER	GLU	ASN	ASN	THR	SER	LEU	GLN	THR	HIS	GLN	THR	THR	ILE	VAL	VAL	GLN	LEU
L1627	F1628	E1629	G1630	H1631	S1632	E1633	Y1634	A1635	Q1636	R1637	C1638	E1639	S1640	G1641	G1642	F1643	K1646	I1648	H1650	M1650	Q1651	M1652	D1653	L1654	M1655	E1656	S1657	E1658	E1659	I1663	K1664	R1667	Q1671	M1672	L1673	L1674	K1675	K1676	T1677	K1678	L1609	Y1679	G1680	I1681	Q1682	G1683	N1684	Q1685	L1686	R1687	K1688	M1689	N1693	Y1694						
L1695	Q1696	ASN	ARG	LYS	SER	THR	ARG	GLY	ASP	LEU	PRO	ASP	ILE	THR	GLY	ASP	ASP	W1718	S1719	A1720	A1723	L1728	D1729	K1730	E1731	G1732	K1735	L1736	V1737	C1738	D1739	L1740	I1741	T1742	S1743	T1744	K1745	M1746	E1747	K1748	I1749	F1750	S1753	L1754	G1755	D1762	G1763	G1764												
F1772	H1773	N1774	L1775	M1776	M1777	S1778	D1779	K1780	R1784	F1785	R1792	K1793	M1794	R1796	A1796	E1799	S1802	T1803	V1804	ALA	VAL	ASN	MET	ASN	ASP	LEU	GLY	SER	GLN	PRO	H1889	M1890	F1891	L1892	R1893	C1894	Q1895	M1896	M1897	K1898	Y1901	E1906	D1912	I1913	T1918	T1919	L1922	G1923	L1924	L1925										
ARG	TYR	SER	LEU	GLY	PRO	SER	LEU	ARG	GLY	HIS	GLU	VAL	SER	GLU	ARG	VAL	GLN	SER	SER	GLU	M1863	G1864	T1865	S1866	V1867	R1875	F1876	L1877	Q1878	R1886	Q1889	M1890	F1891	L1892	R1893	C1894	Q1895	M1896	M1897	K1898	Y1901	E1906	D1912	I1913	T1918	T1919	L1922	G1923	L1924	L1925										
G1926	L1927	M1930	E1931	D1932	M1933	V1934	G1935	A1936	V1937	I1938	Q1939	T1940	E1946	Y1947	C1948	Q1949	H1953	Q1956	T1961	H1962	E1963	S1964	M1965	G1966	A1972	L1973	I1974	L1975	M1976	D1977	L1981	C1982	K1983	Y1984	R1985	M1986	L1992	K1998	L2001	A2002	L2003	M2004	E2005	S2006	R2007	H2008	D2009	S2010												
A2013	E2014	R2015	I2018	R2021	P2022	Q2023	E2024	D2027	K2031	A2032	Y2033	L2034	Q2035	E2036	E2037	E2038	R2039	E2040	S2042	E2043	H2051	L2058	Q2059	R2062	H2063	N2064	K2065	Q2068	H2069	P2073	V2074	LYS	ARG	ILE	GLN	GLU	GLU	GLU	ALA	GLU	GLY	ILE	SER	MET	LEU	LEU	ASN													
ASN	LYS	GLN	LEU	SER	GLN	MET	LEU	LYS	SER	ALA	ALA	GLN	GLU	GLU	E2111	A2115	Y2116	N2119	Q2123	Q2129	D2130	R2131	E2134	Q2135	F2146	L2147	T2148	E2149	E2150	T2151	K2152	H2153	T2155	Q2161	D2162	E2163	K2167	D2170	D2173	F2177	L2178	H2179	M2182																	
E2183	S2190	M2191	L2193	T2194	Y2195	W2196	F2197	S2198	R2199	R2200	M2201	W2204	F2209	A2212	V2213	F2214	I2215	N2216	I2217	L2218	I2219	A2220	F2221	F2222	Y2225	MET	GLU	GLY	ALA	SER	THR	GLY	VAL	LEU	ASP	SER	PRO	L2231	L2232	S2233	L2234	L2235	F2236	W2237	L2238	L2239	I2240	C2241	F2242	S2243	I2244	A2245	A2246							
L2247	F2248	T2249	K2250	R2251	Y2252	S2260	P2263	L2264	A2267	L2268	R2271	S2272	I2273	Y2274	Y2275	L2276	G2277	I2278	G2279	P2280	T2281	L2282	N2283	L2284	L2285	G2286	A2287	L2288	N2289	I2294	V2295	F2296	V2297	V2298	G2302	N2303	R2304	G2305	T2306	F2307	I2308	R2309	G2310	Y2311	K2312	A2313	M2314	V2315	M2316	D2317	M2318	E2319	F2320	L2321						
Y2322	H2323	V2324	G2325	V2331	L2332	F2335	A2336	H2337	E2338	L2339	F2340	Y2341	L2344	L2345	F2346	D2347	L2348	L2349	Y2350	P2351	E2352	E2353	F2356	K2360	S2361	R2364	R2367	A2373	L2374	L2377	L2378	Y2381	F2388	K2392	D2393	D2394	F2395	L2396	V2399	D2400	R2401	L2402	F2403	ASN	ASN	HIS														



● Molecule 1: Inositol 1,4,5-trisphosphate receptor type 3



L1462	L1463	L1465	L1466	L1467	L1468	S1469	V1470	E1471	A1472	C1473	I1474	T1475	S1444	V1445	V1446	L1447	D1448	T1449	I1450	N1451	A1452	F1453	F1454	SER	PRO	PHE	SER	GLU	ASN	SER	THR	L1492	L1493	P1494	H1495	D1496	L1497	D1498	A1499	H1500	I1501	S1503																			
L1371	L1372	A1373	A1374	A1375	C1376	E1377	G1378	K1379	L1380	V1381	Y1382	T1383	E1384	I1385	K1386	C1387	T1388	S1389	L1390	L1391	P1392	L1393	E1394	D1395	V1396	V1397	S1398	V1399	V1400	T1401	H1402	L1403	E1404	C1405	I1406	T1407	E1408	V1409	K1410	M1411	A1412	Y1413	V1414	N1415	F1416	V1417	N1418	H1419	C1420	Y1421	V1422	D1423	THR	GLU	VAL	GLU	GLU	MET	LYS	GLU	D1370
G1311	K1312	Y1313	V1314	K1315	K1316	C1317	Q1318	D1319	M1320	I1321	M1322	T1323	E1324	L1325	T1326	M1327	A1328	G1329	D1330	D1331	V1332	V1333	V1334	V1335	V1336	M1337	D1338	K1339	A1340	S1341	L1342	L1343	A1344	L1345	L1346	D1347	M1348	M1349	K1350	A1351	A1352	R1353	D1354	V1355	V1356	E1357	D1358	H1359	S1360	P1361	L1362	M1363	H1364	H1365	I1366	S1367	L1368	V1369			
L1250	H1251	L1252	F1253	L1254	T1255	P1256	G1257	L1258	L1259	E1260	A1261	E1262	Q1265	H1266	I1267	F1268	L1269	N1270	M1271	Y1272	Q1273	L1274	C1275	S1276	E1277	I1278	S1279	E1280	P1281	V1282	L1283	Q1284	H1285	F1286	V1287	H1288	L1289	L1290	A1291	T1292	H1293	G1294	R1295	H1296	V1297	Q1298	Y1299	L1300	D1301	F1302	L1303	H1304	T1305	V1306	I1307	K1308	A1309	E1310			
R1190	K1191	K1192	Q1193	Q1194	R1195	L1196	L1197	K1198	M1199	M1200	D1201	A1202	H1203	K1204	V1205	M1206	L1207	D1208	L1209	L1210	Q1211	I1212	P1213	V1214	D1215	K1216	G1217	D1218	A1219	K1220	M1221	M1222	E1223	L1224	L1225	Y1226	R1227	Y1228	H1229	Q1230	F1231	L1232	Q1233	K1234	F1235	C1236	A1237	G1238	M1239	P1240	G1241	M1242	Q1243	A1244	L1245	L1246	H1247	K1248	H1249		
L11060	H1061	L1062	M1063	H1064	H1065	D1066	Y1067	P1069	L1070	L1077	L1078	F1079	K1080	H1081	F1082	R1085	H1090	T1091	F1092	K1093	Q1094	L1097	L1098	L1099	S1100	A1101	Q1102	D1103	V1104	E1105	M1106	Y1107	K1108	V1109	I1110	K1111	S1112	E1113	L1114	D1115	R1116	L1117	L1118	T1119	M1120	E1122	K1123	S1124	E1125	L1126	L1127	Y1128	ASP								
V999	E1000	V1001	F1002	PRO	MET	GLN	ASP	GLY	ALA	ALA	ASP	THR	ALA	ALA	THR	ALA	ASN	ALA	ASN	MET	N1024	L1025	D1026	R1027	I1028	G1029	E1030	Q1031	A1032	E1033	A1034	M1035	F1036	G1037	V1038	LYS	THR	SER	S1043	M1044	L1045	E1046	V1047	D1048	D1049	S992	V993	G1051	F994	R1053	M1054	F1055	L1056	R1057							
PHE	SER	ALA	PRO	LEU	SER	ALA	GLY	ALA	ALA	GLY	PRO	LEU	ASP	ARG	LYS	VAL	GLN	GLY	PRO	PRO	ALA	MET	VAL	ALA	TNR	GLU	GLY	ASP	PRO	GLY	LYS	VAL	ARG	ARG	ARG	LYS	GLY	VAL	HIS	MET	MET	SER	THR	MET	VAL	LEU	ARG	LYS	LYS	GLN	SER	VAL									
I748	D749	E750	I751	S752	Q753	Q754	L755	G756	V757	D758	L759	I760	F761	L762	C763	M764	A765	D766	E767	M768	L769	F770	F771	D772	L773	R774	A775	F776	F777	C778	H779	H783	V784	H785	H786	D787	R788	D789	E792	L793	V794	T795	F796	V797	K798	F799	A800	R801	L802	W803	T804	I806	P807	T808	A809	I810					
T811	I812	K813	D814	Y815	D816	S817	N818	L819	N820	A821	S822	R823	D824	D825	K826	K827	N828	K829	F830	A831	N832	T833	M834	E835	F836	V837	E838	D839	F840	L841	N842	N843	V844	V845	S846	E847	A848	V849	P850	F851	M852	N853	E854	E855	K856	N857	K858	L859	T860	V863	L866	A867	H868	I871	Y872	F873					
G874	F875	Y876	S877	F878	S879	L882	R883	L884	T885	R886	L889	G890	I891	I892	D893	CYS	VAL	GLN	GLY	PRO	PRO	ALA	MET	LEU	GLN	TNR	GLU	GLY	ASP	PRO	GLY	LYS	VAL	ARG	ARG	ILE	GLY	VAL	GLY	HIS	MET	MET	SER	THR	MET	VAL	LEU	ARG	LYS	GLN	SER	VAL									

M1504	L1505	L1506	S1507	G1508	A1515	S1516	C1517	A1518	A1519	A1520	A1521	Q1522	R1523	M1524	A1525	S1526	S1527	Y1528	K1529	A1530	T1531	T1532	R1533	A1541	F1542	P1543	R1544	V1545	T1546	P1547	T1548	A1549	M1550	Q1551	W1552	D1587	Y1588	K1589	M1590	E1593	K1594	L1595	Q1596	D1597	I1598	I1599	E1603	E1604	R1605	F1608	L1609	V1616	H1622	W1623							
P1624	L1627	F1628	L1629	E1630	G1631	E1632	E1633	A1634	Y1635	Q1636	R1637	C1638	E1639	G1642	F1643	K1646	L1647	H1650	T1651	K1652	L1654	M1655	E1656	S1657	E1658	E1659	I1663	L1666	Q1670	Q1671	M1672	L1673	L1674	K1675	K1676	T1677	K1678	Y1679	G1680	D1681	R1682	Q1685	L1686	R1687	K1688	M1689	Q1692	N1693													
Q1696	ASN	ARG	LYS	SER	THR	ARG	GLY	ASP	LEU	PRO	PRO	ILE	GLY	ASN	THR	GLY	LEU	ASP	PRO	D1717	W1718	S1719	Q1725	D1729	K1730	E1731	K1734	T1735	L1736	W1737	C1738	D1739	L1740	I1741	T1742	S1743	E1747	S1753	H1759	L1760	L1761	D1762	G1763	G1764	Q1769	F1772	H1773	M1776	M1777												
S1778	D1779	K1780	S1781	Y1782	E1783	R1784	F1785	S1802	T1803	V1804	ALA	VAL	ASN	MET	ASN	ASP	LEU	GLY	SER	GLN	PRO	HIS	GLU	ASP	ARG	GLU	PRO	VAL	ASP	PRO	THR	THR	LYS	GLY	VAL	ALA	SER	PHE	ILE	GLY	SER	SER	ARG	TYR	SER	LEU	SER	GLY	PRO	SER	LEU	ARG	ARG	GLY	HIS						
GLU	VAL	SER	GLU	ARG	VAL	SER	SER	M1863	G1864	T1865	S1866	P1872	F1876	L1877	Q1878	L1879	L1880	C1881	E1882	N1883	Q1889	N1890	M1896	N1897	K1898	T1899	F1910	I1913	S1917	G1920	G1921	L1922	L1925	G1926	Y1928	D1932	M1933	V1937	I1938	Q1939	T1940	T1945	E1946																		
Q1949	G1950	P1951	C1952	H1953	Q1956	E1963	S1964	H1965	D1968	L1975	N1976	D1977	I1978	C1982	K1983	D1987	L2001	A2002	L2003	M2004	E2005	S2006	R2007	H2008	N2012	A2013	E2014	R2015	L2016	L2017	L2018	S2019	L2020	R2021	E2037	E2038	R2039	E2040	N2041	S2042	E2043	R2047	L2058	S2061	R2062	Q2066															
H2069	L2070	L2071	K2072	P2073	V2074	ARG	ILE	G1216	D2162	E2163	Q2164	G2165	S2166	K2167	D2173	N1976	D1977	I1978	C1982	K1983	D1987	L2001	A2002	L2003	M2004	E2005	S2006	R2007	H2008	N2012	A2013	E2014	R2015	L2016	L2017	L2018	S2019	L2020	R2021	E2037	E2038	R2039	E2040	N2041	S2042	E2043	R2047	L2058	S2061	R2062	Q2066										
L2147	E2150	R2154	Q2161	D2162	E2163	Q2164	G2165	S2166	K2167	D2173	N1976	D1977	I1978	C1982	K1983	D1987	L2001	A2002	L2003	M2004	E2005	S2006	R2007	H2008	N2012	A2013	E2014	R2015	L2016	L2017	L2018	S2019	L2020	R2021	E2037	E2038	R2039	E2040	N2041	S2042	E2043	R2047	L2058	S2061	R2062	Q2066															
L2235	F2236	W2237	L2238	L2239	L2240	C2241	F2242	S2243	L2244	A2245	A2246	L2247	F2248	T2249	R2250	R2251	Y2252	S2260	I2261	R2262	P2263	L2264	Y2265	V2266	A2267	L2268	I2269	L2270	R2271	S2272	L2273	Y2274	Y2275	L2276	G2277	I2278	G2279	P2280	T2281	L2282	N2283	I2284	L2285	G2286	A2287	L2288	N2289	L2290	N2292	K2293	L2294	V2295	F2296	F2300	V2301	G2302	N2303				
R2304	G2305	T2306	F2307	I2308	R2309	G2310	F2311	K2312	A2313	M2314	V2315	M2316	D2317	M2318	L2321	Y2322	Y2326	T2329	L2332	F2335	A2336	H2337	E2338	L2339	F2340	Y2341	L2344	L2345	F2346	D2347	L2348	I2349	Y2350	R2351	E2352	N2357	K2360	S2361	R2367	L2374	L2377	I2378	L2379	V2380	Y2381	L2382	I2385														
F2388	L2391	K2392	D2393	D2394	F2395	L2396	L2397	E2398	V2399	D2400	R2401	L2402	P2403	ASN	ASN	HIS	SER	THR	GLU	GLY	GLN	PRO	LEU	GLY	MET	PRO	HIS	GLY	ALA	ALA	ALA	PHE	VAL	ASP	THR	CYS	LYS	GLY	LYS	ASP	MET	ASP	CYS	VAL	SER	GLY	LEU	SER	VAL	VAL	PRO	PRO	GLU	VAL	VAL	LEU	GLU	GLU	ASP	ARG	GLU
L2449	S2450	T2451	E2452	R2453	A2454	C2455	D2456	T2457	L2458	L2459	M2466	N2467	H2468	G2469	L2470	R2471	N2472	G2473	G2474	G2475	D2476	L2479	L2480	R2481	S2484	K2485	A2492	Y2496	D2497	L2498	L2499	F2502	I2503	V2504	I2505	I2506	L2509	G2514	D2518	L2523	R2524	S2525	E2526	K2527	L2534	R2545															
D2549	T2552	V2553	V2590	A2591	D2592	H2593	L2594	K2595	L2596	N2597	M2608	V2611	SER	ASN	GLU	GLY	GLU	GLY	GLY	GLN	ASN	GLU	ILE	ILE	ILE	GLN	ASP	GLN	LYS	LEU	ASN	THR	THR	MET	LYS	VAL	SER	HIS	THR	THR	ALA	GLN	LEU	ASN	GLU	GLU	THR	GLU	GLN												

ARG
LYS
ARG
ARG
GLN
ARG
LEU
GLY
PHE
VAL
ASP
VAL
GLN
ASN
CYS
ILE
SER
ARG

4 Experimental information

Property	Value	Source
EM reconstruction method	SINGLE PARTICLE	Depositor
Imposed symmetry	POINT, Not provided	
Number of particles used	27334	Depositor
Resolution determination method	FSC 0.143 CUT-OFF	Depositor
CTF correction method	PHASE FLIPPING AND AMPLITUDE CORRECTION	Depositor
Microscope	FEI TITAN KRIOS	Depositor
Voltage (kV)	300	Depositor
Electron dose ($e^-/\text{\AA}^2$)	61	Depositor
Minimum defocus (nm)	1000	Depositor
Maximum defocus (nm)	Not provided	
Magnification	22500	Depositor
Image detector	GATAN K2 SUMMIT (4k x 4k)	Depositor
Maximum map value	11.858	Depositor
Minimum map value	-6.272	Depositor
Average map value	-0.006	Depositor
Map value standard deviation	0.551	Depositor
Recommended contour level	3.06	Depositor
Map size (Å)	417.79202, 417.79202, 417.79202	wwPDB
Map dimensions	384, 384, 384	wwPDB
Map angles (°)	90.0, 90.0, 90.0	wwPDB
Pixel spacing (Å)	1.088, 1.088, 1.088	Depositor

5 Model quality i

5.1 Standard geometry i

Bond lengths and bond angles in the following residue types are not validated in this section: I3P, ZN

The Z score for a bond length (or angle) is the number of standard deviations the observed value is removed from the expected value. A bond length (or angle) with $|Z| > 5$ is considered an outlier worth inspection. RMSZ is the root-mean-square of all Z scores of the bond lengths (or angles).

Mol	Chain	Bond lengths		Bond angles	
		RMSZ	# Z >5	RMSZ	# Z >5
1	A	0.26	0/17827	0.47	3/24087 (0.0%)
1	B	0.25	0/17827	0.47	3/24087 (0.0%)
1	C	0.25	0/17864	0.46	3/24137 (0.0%)
1	D	0.25	0/17613	0.47	4/23801 (0.0%)
All	All	0.25	0/71131	0.47	13/96112 (0.0%)

There are no bond length outliers.

All (13) bond angle outliers are listed below:

Mol	Chain	Res	Type	Atoms	Z	Observed(°)	Ideal(°)
1	D	1547	PRO	N-CA-CB	5.71	110.15	103.30
1	C	1547	PRO	N-CA-CB	5.66	110.09	103.30
1	C	1501	PRO	N-CA-CB	5.61	110.04	103.30
1	C	1543	PRO	N-CA-CB	5.61	110.03	103.30
1	B	1547	PRO	N-CA-CB	5.61	110.03	103.30
1	D	1436	PRO	N-CA-CB	5.59	110.01	103.30
1	D	1494	PRO	N-CA-CB	5.58	109.99	103.30
1	A	1547	PRO	N-CA-CB	5.57	109.99	103.30
1	A	1501	PRO	N-CA-CB	5.57	109.99	103.30
1	D	1543	PRO	N-CA-CB	5.56	109.97	103.30
1	A	1543	PRO	N-CA-CB	5.53	109.94	103.30
1	B	1501	PRO	N-CA-CB	5.51	109.92	103.30
1	B	1543	PRO	N-CA-CB	5.51	109.91	103.30

There are no chirality outliers.

There are no planarity outliers.

5.2 Too-close contacts [i](#)

In the following table, the Non-H and H(model) columns list the number of non-hydrogen atoms and hydrogen atoms in the chain respectively. The H(added) column lists the number of hydrogen atoms added and optimized by MolProbity. The Clashes column lists the number of clashes within the asymmetric unit, whereas Symm-Clashes lists symmetry-related clashes.

Mol	Chain	Non-H	H(model)	H(added)	Clashes	Symm-Clashes
1	A	17510	17553	17452	77	0
1	B	17510	17555	17453	75	0
1	C	17547	17593	17492	85	0
1	D	17308	17312	17141	74	0
2	A	1	0	0	0	0
2	B	1	0	0	0	0
2	C	1	0	0	0	0
2	D	1	0	0	0	0
3	A	24	9	9	1	0
3	B	24	9	9	0	0
3	C	24	9	9	1	0
3	D	24	9	9	0	0
All	All	69975	70049	69574	304	0

The all-atom clashscore is defined as the number of clashes found per 1000 atoms (including hydrogen atoms). The all-atom clashscore for this structure is 2.

All (304) close contacts within the same asymmetric unit are listed below, sorted by their clash magnitude.

Atom-1	Atom-2	Interatomic distance (Å)	Clash overlap (Å)
1:A:1054:MET:SD	1:A:1057:ARG:NH2	2.59	0.75
1:C:2163:GLU:O	1:D:2545:ARG:NH1	2.21	0.74
1:A:1085:ARG:NH1	1:A:1613:GLU:OE2	2.20	0.74
1:A:2545:ARG:NH1	1:D:2163:GLU:O	2.22	0.73
1:D:749:ASP:O	1:D:753:GLN:NE2	2.22	0.73
1:D:1987:ASP:OD1	1:D:2042:SER:OG	2.06	0.72
1:B:1085:ARG:NH1	1:B:1613:GLU:OE2	2.23	0.72
1:C:401:THR:OG1	1:C:416:MET:O	2.08	0.71
1:C:1956:GLN:NE2	1:C:2002:ALA:O	2.24	0.70
1:C:2394:ASP:OD1	1:C:2481:ARG:NH2	2.25	0.70
1:B:171:ARG:NH1	1:B:181:ASP:OD2	2.24	0.70
1:A:1889:GLN:NE2	1:A:1946:GLU:O	2.25	0.70
1:A:2394:ASP:OD1	1:A:2481:ARG:NH2	2.25	0.70
1:B:557:TYR:OH	1:B:584:GLN:OE1	2.08	0.69
1:C:1735:LYS:NZ	1:C:1739:ASP:OD2	2.26	0.69

Continued on next page...

Continued from previous page...

Atom-1	Atom-2	Interatomic distance (Å)	Clash overlap (Å)
1:D:1053:ARG:NE	1:D:1693:ASN:O	2.25	0.69
1:B:733:LEU:HD12	1:B:780:LEU:HD22	1.75	0.69
1:B:2394:ASP:OD1	1:B:2481:ARG:NH2	2.25	0.69
1:B:743:ARG:NH2	1:B:791:GLN:O	2.26	0.69
1:D:649:GLN:NE2	1:D:738:ARG:O	2.26	0.68
1:D:12:ASP:OD1	1:D:227:PHE:N	2.26	0.68
1:B:1054:MET:SD	1:B:1057:ARG:NH2	2.67	0.68
1:A:1214:TYR:OH	1:A:1222:MET:SD	2.51	0.68
1:C:127:MET:O	1:C:440:ARG:NH2	2.27	0.68
1:C:611:THR:OG1	1:C:614:GLU:OE1	2.10	0.67
1:C:1054:MET:SD	1:C:1057:ARG:NH2	2.67	0.67
1:C:1949:GLN:NE2	1:C:2583:TYR:O	2.27	0.67
1:C:743:ARG:NH2	1:C:791:GLN:O	2.27	0.67
1:D:1725:GLN:NE2	1:D:1759:HIS:O	2.28	0.67
1:C:806:ILE:O	1:C:995:LYS:NZ	2.23	0.66
1:D:2038:GLU:OE2	1:D:2042:SER:OG	2.12	0.66
1:D:2394:ASP:OD1	1:D:2481:ARG:NH2	2.28	0.66
1:B:1956:GLN:NE2	1:B:2002:ALA:O	2.28	0.66
1:B:2163:GLU:O	1:C:2545:ARG:NH1	2.29	0.66
1:B:1214:TYR:OH	1:B:1222:MET:SD	2.50	0.65
1:A:118:TYR:OH	1:A:181:ASP:OD2	2.14	0.65
1:A:733:LEU:HD12	1:A:780:LEU:HD22	1.79	0.65
1:A:632:ASP:O	1:A:635:SER:OG	2.08	0.65
1:C:663:ASP:OD1	1:C:697:THR:OG1	2.14	0.65
1:B:2123:GLN:OE1	1:B:2135:GLN:NE2	2.30	0.64
1:A:886:ARG:NH1	1:A:1047:VAL:O	2.31	0.64
1:B:1937:VAL:O	1:B:1940:THR:OG1	2.10	0.64
1:B:1787:LYS:NZ	1:B:1791:ASP:OD2	2.31	0.64
1:A:1937:VAL:O	1:A:1940:THR:OG1	2.11	0.64
1:D:1735:LYS:NZ	1:D:1739:ASP:OD2	2.19	0.64
1:D:1235:PHE:O	1:D:1242:ASN:ND2	2.31	0.64
1:A:195:HIS:ND1	1:A:196:ALA:O	2.31	0.63
1:A:557:TYR:OH	1:A:584:GLN:OE1	2.17	0.63
1:C:507:LYS:NZ	3:C:2702:I3P:O53	2.27	0.63
1:C:2123:GLN:OE1	1:C:2135:GLN:NE2	2.31	0.62
1:C:192:GLN:O	1:C:212:SER:OG	2.17	0.62
1:B:886:ARG:NH1	1:B:1047:VAL:O	2.32	0.62
1:D:1107:TYR:OH	1:D:1200:MET:SD	2.50	0.62
1:B:2187:LYS:O	1:B:2190:SER:OG	2.14	0.62
1:C:1878:GLN:OE1	1:C:1939:GLN:NE2	2.31	0.62
1:D:195:HIS:ND1	1:D:196:ALA:O	2.33	0.62

Continued on next page...

Continued from previous page...

Atom-1	Atom-2	Interatomic distance (Å)	Clash overlap (Å)
1:C:144:GLU:OE2	1:C:211:ASN:ND2	2.33	0.61
1:C:1385:ILE:O	1:C:1388:THR:OG1	2.18	0.61
1:B:144:GLU:OE2	1:B:211:ASN:ND2	2.33	0.61
1:A:2163:GLU:O	1:B:2545:ARG:NH1	2.34	0.61
1:A:1385:ILE:O	1:A:1388:THR:OG1	2.15	0.61
1:A:485:ASP:OD2	1:A:500:LYS:NZ	2.35	0.60
1:A:1254:LEU:O	1:A:1285:HIS:NE2	2.35	0.59
1:A:1243:GLN:OE1	1:A:1271:ASN:ND2	2.36	0.59
1:D:1350:LYS:O	1:D:1353:ARG:NH1	2.37	0.58
1:B:892:ILE:HG21	1:B:1058:VAL:HG13	1.85	0.58
1:C:2010:SER:O	1:C:2014:GLU:N	2.35	0.58
1:B:1735:LYS:NZ	1:B:1739:ASP:OD2	2.36	0.58
1:C:1890:ASN:OD1	1:C:1893:ARG:NH2	2.36	0.58
1:D:2123:GLN:OE1	1:D:2135:GLN:NE2	2.37	0.57
1:B:1890:ASN:OD1	1:B:1893:ARG:NH2	2.36	0.57
1:D:1945:THR:O	1:D:1949:GLN:N	2.37	0.57
1:A:1490:ALA:O	1:A:1494:LYS:N	2.38	0.57
1:B:195:HIS:ND1	1:B:196:ALA:O	2.37	0.57
1:C:2367:ARG:NE	1:D:2352:GLU:OE2	2.37	0.57
1:C:626:ARG:NH2	1:C:663:ASP:OD2	2.37	0.57
1:C:656:VAL:HG13	1:C:657:LEU:HD22	1.87	0.57
1:D:2523:LEU:O	1:D:2527:LYS:N	2.38	0.57
1:C:314:TYR:N	1:C:357:VAL:O	2.38	0.57
1:C:389:LEU:HB2	1:C:398:ILE:HD12	1.86	0.57
1:B:163:PHE:N	1:B:186:ASN:O	2.35	0.56
1:B:1889:GLN:NE2	1:B:1946:GLU:O	2.38	0.56
1:B:656:VAL:HG13	1:B:657:LEU:HD22	1.87	0.56
1:D:1937:VAL:O	1:D:1940:THR:OG1	2.21	0.56
1:D:1782:SER:OG	1:D:1897:ASN:OD1	2.21	0.56
1:D:1178:ARG:O	1:D:1182:MET:N	2.39	0.56
1:B:1391:LEU:O	1:B:1421:TYR:OH	2.24	0.55
1:A:1890:ASN:OD1	1:A:1893:ARG:NH2	2.39	0.55
1:C:1397:VAL:O	1:C:1401:THR:OG1	2.17	0.55
1:D:640:SER:O	1:D:643:ILE:N	2.39	0.55
1:D:1951:PRO:O	1:D:1956:GLN:NE2	2.40	0.55
1:A:1391:LEU:O	1:A:1421:TYR:OH	2.24	0.55
1:B:1893:ARG:NH1	1:B:1955:ASN:OD1	2.39	0.55
1:D:1764:GLY:O	1:D:1883:ASN:ND2	2.39	0.55
1:C:886:ARG:NH1	1:C:1047:VAL:O	2.40	0.55
1:A:1787:LYS:NZ	1:A:1791:ASP:OD2	2.40	0.55
1:D:27:SER:OG	1:D:54:ASP:OD2	2.19	0.55

Continued on next page...

Continued from previous page...

Atom-1	Atom-2	Interatomic distance (Å)	Clash overlap (Å)
1:A:2123:GLN:OE1	1:A:2135:GLN:NE2	2.41	0.54
1:C:1085:ARG:NH1	1:C:1613:GLU:OE2	2.40	0.54
1:C:1087:GLU:O	1:C:1091:THR:OG1	2.18	0.54
1:C:1103:ASP:OD2	1:C:1192:LYS:NZ	2.39	0.54
1:A:171:ARG:NH1	1:A:181:ASP:OD2	2.41	0.54
1:C:2523:LEU:O	1:C:2527:LYS:N	2.39	0.54
1:A:1783:GLU:OE1	1:A:1897:ASN:ND2	2.41	0.54
1:D:827:LYS:O	1:D:831:ALA:N	2.39	0.54
1:C:2360:LYS:O	1:C:2364:ARG:N	2.39	0.53
1:A:656:VAL:HG13	1:A:657:LEU:HD22	1.91	0.53
1:A:1956:GLN:NE2	1:A:2002:ALA:O	2.42	0.53
1:A:2524:ARG:NE	1:D:2518:ASP:OD2	2.43	0.52
1:C:1254:LEU:O	1:C:1285:HIS:NE2	2.43	0.52
1:D:1953:HIS:NE2	1:D:2006:SER:O	2.43	0.52
1:A:2184:TRP:O	1:A:2188:LEU:N	2.43	0.51
1:A:664:ILE:O	1:A:728:TYR:OH	2.20	0.51
1:B:1319:ASP:OD1	1:B:1380:ASN:ND2	2.44	0.51
1:C:2006:SER:OG	1:C:2134:GLU:OE1	2.22	0.51
1:D:1889:GLN:NE2	1:D:1946:GLU:O	2.44	0.51
1:C:1103:ASP:O	1:C:1107:TYR:N	2.42	0.51
1:D:391:HIS:O	1:D:395:ASN:N	2.43	0.50
1:A:568:ARG:NH2	3:A:2702:I3P:O11	2.45	0.50
1:B:663:ASP:OD1	1:B:697:THR:OG1	2.13	0.50
1:D:2003:LEU:O	1:D:2012:ASN:ND2	2.44	0.50
1:A:1103:ASP:OD2	1:A:1192:LYS:NZ	2.44	0.50
1:C:314:TYR:O	1:C:357:VAL:N	2.45	0.50
1:C:1747:GLU:OE1	1:C:1792:ARG:NH1	2.45	0.50
1:A:1981:LEU:O	1:A:1985:ARG:N	2.43	0.50
1:B:801:ARG:NH2	1:B:984:ASP:OD1	2.44	0.50
1:B:104:ASN:OD1	1:B:105:ASP:N	2.44	0.49
1:B:1103:ASP:O	1:B:1107:TYR:N	2.46	0.49
1:D:2006:SER:OG	1:D:2134:GLU:OE1	2.20	0.49
1:D:730:ARG:NH2	1:D:772:ASP:OD2	2.45	0.49
1:C:482:PHE:O	1:C:505:ARG:NH1	2.46	0.49
1:D:1928:TYR:O	1:D:1933:ASN:ND2	2.45	0.49
1:C:563:SER:O	1:C:570:ASN:ND2	2.46	0.49
1:B:153:ASP:OD2	1:B:156:GLY:N	2.43	0.49
1:D:2401:ARG:NE	1:D:2449:ASP:OD2	2.45	0.49
1:B:1046:GLU:OE2	1:B:1052:GLY:N	2.45	0.49
1:C:58:LYS:N	1:C:125:LEU:O	2.45	0.48
1:D:1965:ASN:OD1	1:D:2015:ARG:NH2	2.45	0.48

Continued on next page...

Continued from previous page...

Atom-1	Atom-2	Interatomic distance (Å)	Clash overlap (Å)
1:A:2047:ARG:O	1:A:2051:HIS:ND1	2.46	0.48
1:C:118:TYR:OH	1:C:181:ASP:OD2	2.31	0.48
1:D:719:ASN:ND2	1:D:722:ASP:OD2	2.45	0.48
1:D:1280:GLU:OE2	1:D:1284:GLN:NE2	2.46	0.48
1:D:1878:GLN:OE1	1:D:1939:GLN:NE2	2.43	0.48
1:D:485:ASP:OD2	1:D:500:LYS:NZ	2.43	0.48
1:D:872:TYR:OH	1:D:973:GLU:O	2.31	0.48
1:D:557:TYR:OH	1:D:584:GLN:OE1	2.32	0.48
1:D:1932:ASP:OD1	1:D:1933:ASN:N	2.47	0.48
1:B:1337:ASN:OD1	1:B:1338:ASP:N	2.46	0.48
1:C:1223:GLU:OE1	1:C:1226:ARG:NH2	2.46	0.48
1:A:2518:ASP:OD2	1:B:2524:ARG:NE	2.45	0.48
1:C:1932:ASP:OD1	1:C:1933:ASN:N	2.47	0.48
1:B:1081:HIS:O	1:B:1084:GLN:NE2	2.46	0.47
1:C:352:TYR:O	1:C:419:THR:OG1	2.27	0.47
1:C:12:ASP:OD1	1:C:13:ILE:N	2.48	0.47
1:D:104:ASN:OD1	1:D:105:ASP:N	2.47	0.47
1:A:1337:ASN:OD1	1:A:1338:ASP:N	2.47	0.47
1:B:255:ASP:OD1	1:B:256:GLU:N	2.48	0.47
1:B:1397:VAL:O	1:B:1401:THR:OG1	2.16	0.47
1:D:17:TYR:O	1:D:220:LYS:N	2.47	0.47
1:B:314:TYR:N	1:B:357:VAL:O	2.45	0.47
1:B:2047:ARG:O	1:B:2051:HIS:ND1	2.44	0.47
1:D:114:ASP:OD1	1:D:115:VAL:N	2.47	0.47
1:B:434:VAL:HG11	1:B:439:ILE:HD11	1.97	0.46
1:C:892:ILE:HG21	1:C:1058:VAL:HG13	1.96	0.46
1:C:988:SER:O	1:C:992:SER:OG	2.31	0.46
1:C:2007:ARG:O	1:C:2062:ARG:NH2	2.48	0.46
1:D:758:ASP:OD1	1:D:759:LEU:N	2.48	0.46
1:D:1048:ASP:OD1	1:D:1049:ASP:N	2.48	0.46
1:B:305:ARG:NE	1:B:360:GLY:O	2.48	0.46
1:B:1930:ASN:OD1	1:B:1931:GLU:N	2.49	0.46
1:A:1893:ARG:NH1	1:A:1955:ASN:OD1	2.48	0.46
1:A:2326:TYR:O	1:A:2329:THR:OG1	2.32	0.46
1:B:543:ASP:OD2	1:B:545:LYS:NZ	2.49	0.46
1:B:114:ASP:OD1	1:B:115:VAL:N	2.47	0.46
1:B:758:ASP:OD1	1:B:759:LEU:N	2.49	0.46
1:C:758:ASP:OD1	1:C:759:LEU:N	2.49	0.46
1:B:1048:ASP:OD1	1:B:1049:ASP:N	2.49	0.46
1:C:466:GLN:OE1	1:C:469:ARG:NH2	2.48	0.46
1:A:66:SER:N	1:A:100:GLU:OE2	2.48	0.46

Continued on next page...

Continued from previous page...

Atom-1	Atom-2	Interatomic distance (Å)	Clash overlap (Å)
1:B:165:GLN:O	1:B:184:ILE:N	2.45	0.46
1:A:104:ASN:OD1	1:A:105:ASP:N	2.49	0.45
1:A:239:ASP:OD1	1:A:240:VAL:N	2.49	0.45
1:A:255:ASP:OD1	1:A:256:GLU:N	2.47	0.45
1:C:1337:ASN:OD1	1:C:1338:ASP:N	2.49	0.45
1:A:114:ASP:OD1	1:A:115:VAL:N	2.49	0.45
1:A:1048:ASP:OD1	1:A:1049:ASP:N	2.49	0.45
1:B:371:PRO:O	1:B:388:ARG:NH1	2.50	0.45
1:C:1048:ASP:OD1	1:C:1049:ASP:N	2.49	0.45
1:D:801:ARG:NH2	1:D:984:ASP:OD1	2.47	0.45
1:A:2036:GLU:OE2	1:A:2047:ARG:NH2	2.49	0.45
1:B:1981:LEU:O	1:B:1985:ARG:N	2.47	0.45
1:C:132:TYR:N	1:C:153:ASP:O	2.50	0.45
1:D:305:ARG:NE	1:D:360:GLY:O	2.49	0.45
1:A:32:VAL:HG12	1:A:32:VAL:O	2.17	0.45
1:B:132:TYR:N	1:B:153:ASP:O	2.50	0.45
1:D:882:LEU:O	1:D:885:THR:OG1	2.25	0.45
1:A:1109:VAL:O	1:A:1113:GLU:N	2.49	0.45
1:C:1889:GLN:NE2	1:C:1946:GLU:O	2.50	0.45
1:A:494:LEU:O	1:A:558:ARG:NH2	2.50	0.45
1:A:1932:ASP:OD1	1:A:1933:ASN:N	2.50	0.45
1:C:1319:ASP:OD1	1:C:1380:ASN:ND2	2.49	0.45
1:D:32:VAL:HG12	1:D:32:VAL:O	2.17	0.45
1:B:2151:THR:HG23	1:B:2154:ARG:HH21	1.82	0.45
1:D:2058:LEU:O	1:D:2061:SER:OG	2.28	0.45
1:B:1887:ASP:O	1:B:1891:PHE:N	2.49	0.44
1:C:764:MET:O	1:C:774:ARG:NH2	2.49	0.44
1:C:1391:LEU:O	1:C:1421:TYR:OH	2.35	0.44
1:A:141:ALA:N	1:A:147:ALA:O	2.47	0.44
1:C:141:ALA:N	1:C:147:ALA:O	2.44	0.44
1:B:239:ASP:OD1	1:B:240:VAL:N	2.50	0.44
1:D:1783:GLU:OE1	1:D:1899:THR:OG1	2.34	0.44
1:A:758:ASP:OD1	1:A:759:LEU:N	2.50	0.44
1:A:1894:CYS:SG	1:A:1900:ASN:ND2	2.91	0.44
1:C:164:ILE:HG23	1:C:164:ILE:O	2.17	0.44
1:C:1033:GLU:OE2	1:C:1085:ARG:NH2	2.51	0.44
1:C:1523:ARG:O	1:C:1527:SER:N	2.49	0.44
1:A:1897:ASN:OD1	1:A:1898:LYS:N	2.51	0.44
1:C:1981:LEU:O	1:C:1985:ARG:N	2.46	0.44
1:B:141:ALA:N	1:B:147:ALA:O	2.48	0.44
1:A:2515:VAL:O	1:A:2519:THR:N	2.50	0.44

Continued on next page...

Continued from previous page...

Atom-1	Atom-2	Interatomic distance (Å)	Clash overlap (Å)
1:B:32:VAL:HG12	1:B:32:VAL:O	2.16	0.44
1:C:44:ASP:OD1	1:C:45:LEU:N	2.50	0.44
1:C:1891:PHE:O	1:C:1895:GLN:NE2	2.50	0.44
1:D:1681:ASP:OD1	1:D:1682:ARG:N	2.51	0.44
1:A:1735:LYS:NZ	1:A:1739:ASP:OD2	2.51	0.44
1:A:1749:ILE:O	1:A:1753:SER:N	2.50	0.44
1:B:632:ASP:O	1:B:635:SER:OG	2.22	0.44
1:B:1115:ASP:OD1	1:B:1116:ARG:N	2.50	0.44
1:D:1736:LEU:O	1:D:1740:LEU:N	2.46	0.44
1:D:2296:PHE:O	1:D:2300:PHE:N	2.48	0.44
1:D:2552:THR:HG23	1:D:2553:VAL:HG13	2.00	0.44
1:C:126:HIS:O	1:C:130:ASN:N	2.47	0.44
1:D:494:LEU:O	1:D:558:ARG:NH2	2.51	0.44
1:B:485:ASP:OD2	1:B:500:LYS:NZ	2.50	0.43
1:C:2218:ILE:HG21	1:C:2282:LEU:HD21	2.00	0.43
1:B:1932:ASP:OD1	1:B:1933:ASN:N	2.52	0.43
1:D:2590:VAL:O	1:D:2593:MET:N	2.51	0.43
1:A:666:ILE:HG22	1:A:732:GLN:HG2	2.01	0.43
1:C:1115:ASP:OD1	1:C:1116:ARG:N	2.52	0.43
1:C:1930:ASN:OD1	1:C:1931:GLU:N	2.52	0.43
1:D:239:ASP:OD1	1:D:240:VAL:N	2.50	0.43
1:D:1290:LEU:HD23	1:D:1332:VAL:HG13	2.00	0.43
1:B:1970:ILE:HG21	1:B:2000:LEU:HD21	2.00	0.43
1:D:255:ASP:OD1	1:D:256:GLU:N	2.49	0.43
1:A:2538:CYS:SG	1:A:2539:PHE:N	2.92	0.43
1:B:593:ASP:OD1	1:B:633:TYR:OH	2.19	0.43
1:B:2006:SER:OG	1:B:2134:GLU:OE1	2.30	0.43
1:C:1740:LEU:O	1:C:1744:THR:HG22	2.18	0.43
1:A:2523:LEU:O	1:A:2527:LYS:N	2.48	0.43
1:A:1053:ARG:NH2	1:A:1627:LEU:O	2.52	0.43
1:A:67:ALA:N	1:A:100:GLU:OE1	2.50	0.43
1:A:1987:ASP:OD1	1:A:1988:LEU:N	2.52	0.43
1:B:843:ASN:O	1:B:846:SER:OG	2.32	0.43
1:C:239:ASP:OD1	1:C:240:VAL:N	2.53	0.42
1:D:1068:ALA:HB3	1:D:1069:PRO:HD3	2.00	0.42
1:A:872:TYR:OH	1:A:973:GLU:O	2.36	0.42
1:C:1897:ASN:OD1	1:C:1898:LYS:N	2.50	0.42
1:D:648:THR:HG22	1:D:652:ILE:HD12	2.01	0.42
1:A:1286:PHE:O	1:A:1290:LEU:N	2.50	0.42
1:A:1930:ASN:OD1	1:A:1931:GLU:N	2.51	0.42
1:D:2260:SER:OG	1:D:2261:ILE:N	2.53	0.42

Continued on next page...

Continued from previous page...

Atom-1	Atom-2	Interatomic distance (Å)	Clash overlap (Å)
1:A:719:ASN:ND2	1:A:722:ASP:OD2	2.52	0.42
1:A:550:GLN:OE1	1:A:588:ASP:OD2	2.38	0.42
1:A:772:ASP:OD1	1:A:773:LEU:N	2.53	0.42
1:B:1897:ASN:OD1	1:B:1898:LYS:N	2.52	0.42
1:D:968:LYS:HA	1:D:971:ILE:HD12	2.00	0.42
1:C:1937:VAL:O	1:C:1940:THR:OG1	2.29	0.42
1:A:1945:THR:O	1:A:1949:GLN:N	2.45	0.41
1:C:192:GLN:NE2	1:C:214:ASN:OD1	2.51	0.41
1:C:480:VAL:HG12	1:C:496:ILE:HD11	2.02	0.41
1:A:593:ASP:OD1	1:A:633:TYR:OH	2.23	0.41
1:A:801:ARG:NH2	1:A:984:ASP:OD1	2.46	0.41
1:B:550:GLN:OE1	1:B:588:ASP:OD2	2.38	0.41
1:B:197:SER:OG	1:B:209:GLU:O	2.27	0.41
1:B:1053:ARG:NH2	1:B:1627:LEU:O	2.53	0.41
1:B:2523:LEU:O	1:B:2527:LYS:N	2.49	0.41
1:D:2012:ASN:O	1:D:2016:ILE:HD12	2.21	0.41
1:B:2053:ILE:O	1:B:2057:ALA:N	2.51	0.41
1:C:2401:ARG:NE	1:C:2449:ASP:OD2	2.53	0.41
1:D:2498:LEU:HD12	1:D:2502:PHE:HE2	1.85	0.41
1:A:133:LEU:HA	1:A:152:LEU:HD23	2.02	0.41
1:B:1949:GLN:NE2	1:B:2583:TYR:O	2.54	0.41
1:C:494:LEU:HD21	1:C:554:ARG:HB3	2.02	0.41
1:C:1043:SER:OG	1:C:1044:MET:N	2.53	0.41
1:C:1749:ILE:O	1:C:1753:SER:N	2.53	0.41
1:D:318:GLU:O	1:D:353:CYS:N	2.54	0.41
1:A:111:VAL:O	1:A:111:VAL:HG12	2.21	0.41
1:A:245:HIS:N	1:A:250:LYS:O	2.54	0.41
1:C:871:ILE:HD13	1:C:974:ILE:HG23	2.03	0.41
1:D:144:GLU:OE2	1:D:211:ASN:ND2	2.48	0.41
1:D:1225:LEU:O	1:D:1228:THR:OG1	2.28	0.41
1:A:28:THR:N	1:A:54:ASP:OD2	2.54	0.40
1:A:2006:SER:OG	1:A:2134:GLU:OE1	2.28	0.40
1:C:1930:ASN:N	1:C:1933:ASN:OD1	2.50	0.40
1:B:772:ASP:OD1	1:B:773:LEU:N	2.54	0.40
1:D:2237:TRP:O	1:D:2241:CYS:N	2.51	0.40
1:B:2007:ARG:O	1:B:2062:ARG:NH2	2.54	0.40
1:C:2148:THR:HG1	1:C:2151:THR:HG1	1.67	0.40
1:C:2192:PRO:O	1:C:2196:TRP:N	2.51	0.40
1:B:1891:PHE:O	1:B:1895:GLN:NE2	2.55	0.40
1:B:2204:TRP:CE2	1:B:2295:VAL:HG11	2.57	0.40
1:C:772:ASP:OD1	1:C:773:LEU:N	2.55	0.40

Continued on next page...

Continued from previous page...

Atom-1	Atom-2	Interatomic distance (Å)	Clash overlap (Å)
1:A:1309:ALA:HB3	1:A:1312:LYS:O	2.21	0.40
1:C:882:LEU:O	1:C:885:THR:OG1	2.29	0.40

There are no symmetry-related clashes.

5.3 Torsion angles [i](#)

5.3.1 Protein backbone [i](#)

In the following table, the Percentiles column shows the percent Ramachandran outliers of the chain as a percentile score with respect to all PDB entries followed by that with respect to all EM entries.

The Analysed column shows the number of residues for which the backbone conformation was analysed, and the total number of residues.

Mol	Chain	Analysed	Favoured	Allowed	Outliers	Percentiles	
1	A	2148/2671 (80%)	2067 (96%)	81 (4%)	0	100	100
1	B	2148/2671 (80%)	2067 (96%)	81 (4%)	0	100	100
1	C	2153/2671 (81%)	2070 (96%)	83 (4%)	0	100	100
1	D	2139/2671 (80%)	2063 (96%)	76 (4%)	0	100	100
All	All	8588/10684 (80%)	8267 (96%)	321 (4%)	0	100	100

There are no Ramachandran outliers to report.

5.3.2 Protein sidechains [i](#)

In the following table, the Percentiles column shows the percent sidechain outliers of the chain as a percentile score with respect to all PDB entries followed by that with respect to all EM entries.

The Analysed column shows the number of residues for which the sidechain conformation was analysed, and the total number of residues.

Mol	Chain	Analysed	Rotameric	Outliers	Percentiles	
1	A	1924/2385 (81%)	1919 (100%)	5 (0%)	92	95
1	B	1924/2385 (81%)	1919 (100%)	5 (0%)	92	95
1	C	1928/2385 (81%)	1924 (100%)	4 (0%)	93	96

Continued on next page...

Continued from previous page...

Mol	Chain	Analysed	Rotameric	Outliers	Percentiles	
1	D	1875/2385 (79%)	1870 (100%)	5 (0%)	92	95
All	All	7651/9540 (80%)	7632 (100%)	19 (0%)	93	96

All (19) residues with a non-rotameric sidechain are listed below:

Mol	Chain	Res	Type
1	A	171	ARG
1	A	625	ASN
1	A	2064	ASN
1	A	2289	ASN
1	A	2471	ARG
1	B	171	ARG
1	B	1106	ASN
1	B	2064	ASN
1	B	2289	ASN
1	B	2471	ARG
1	C	390	ARG
1	C	2064	ASN
1	C	2289	ASN
1	C	2471	ARG
1	D	171	ARG
1	D	1897	ASN
1	D	1976	ASN
1	D	2289	ASN
1	D	2471	ARG

Sometimes sidechains can be flipped to improve hydrogen bonding and reduce clashes. There are no such sidechains identified.

5.3.3 RNA [i](#)

There are no RNA molecules in this entry.

5.4 Non-standard residues in protein, DNA, RNA chains [i](#)

There are no non-standard protein/DNA/RNA residues in this entry.

5.5 Carbohydrates [i](#)

There are no monosaccharides in this entry.

5.6 Ligand geometry

Of 8 ligands modelled in this entry, 4 are monoatomic - leaving 4 for Mogul analysis.

In the following table, the Counts columns list the number of bonds (or angles) for which Mogul statistics could be retrieved, the number of bonds (or angles) that are observed in the model and the number of bonds (or angles) that are defined in the Chemical Component Dictionary. The Link column lists molecule types, if any, to which the group is linked. The Z score for a bond length (or angle) is the number of standard deviations the observed value is removed from the expected value. A bond length (or angle) with $|Z| > 2$ is considered an outlier worth inspection. RMSZ is the root-mean-square of all Z scores of the bond lengths (or angles).

Mol	Type	Chain	Res	Link	Bond lengths			Bond angles		
					Counts	RMSZ	# Z > 2	Counts	RMSZ	# Z > 2
3	I3P	B	2702	-	24,24,24	1.28	3 (12%)	36,39,39	0.57	0
3	I3P	D	2702	-	24,24,24	1.29	3 (12%)	36,39,39	0.64	0
3	I3P	A	2702	-	24,24,24	1.26	3 (12%)	36,39,39	0.59	0
3	I3P	C	2702	-	24,24,24	1.29	3 (12%)	36,39,39	0.70	1 (2%)

In the following table, the Chirals column lists the number of chiral outliers, the number of chiral centers analysed, the number of these observed in the model and the number defined in the Chemical Component Dictionary. Similar counts are reported in the Torsion and Rings columns. '-' means no outliers of that kind were identified.

Mol	Type	Chain	Res	Link	Chirals	Torsions	Rings
3	I3P	B	2702	-	-	2/15/39/39	0/1/1/1
3	I3P	D	2702	-	-	2/15/39/39	0/1/1/1
3	I3P	A	2702	-	-	0/15/39/39	0/1/1/1
3	I3P	C	2702	-	-	0/15/39/39	0/1/1/1

All (12) bond length outliers are listed below:

Mol	Chain	Res	Type	Atoms	Z	Observed(Å)	Ideal(Å)
3	D	2702	I3P	P4-O4	3.21	1.65	1.59
3	D	2702	I3P	P1-O1	3.15	1.65	1.59
3	C	2702	I3P	P1-O1	3.14	1.65	1.59
3	C	2702	I3P	P4-O4	3.11	1.65	1.59
3	A	2702	I3P	P1-O1	3.10	1.65	1.59
3	B	2702	I3P	P1-O1	3.10	1.65	1.59
3	B	2702	I3P	P4-O4	3.10	1.65	1.59
3	A	2702	I3P	P4-O4	3.05	1.65	1.59
3	C	2702	I3P	P5-O5	3.04	1.65	1.59
3	D	2702	I3P	P5-O5	3.00	1.65	1.59
3	B	2702	I3P	P5-O5	2.96	1.64	1.59

Continued on next page...

Continued from previous page...

Mol	Chain	Res	Type	Atoms	Z	Observed(Å)	Ideal(Å)
3	A	2702	I3P	P5-O5	2.90	1.64	1.59

All (1) bond angle outliers are listed below:

Mol	Chain	Res	Type	Atoms	Z	Observed(°)	Ideal(°)
3	C	2702	I3P	C5-C6-C1	2.20	113.53	108.96

There are no chirality outliers.

All (4) torsion outliers are listed below:

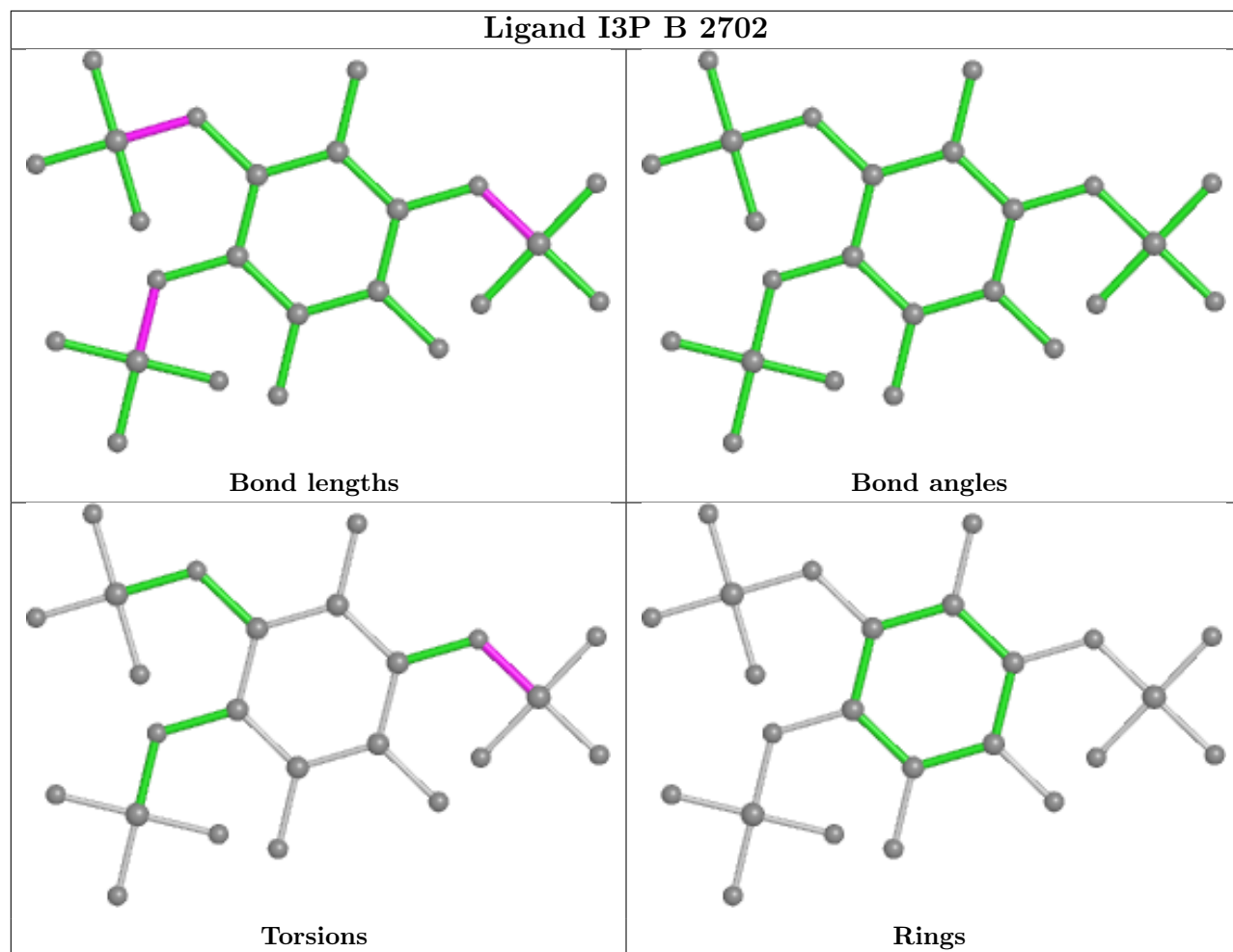
Mol	Chain	Res	Type	Atoms
3	B	2702	I3P	C1-O1-P1-O11
3	B	2702	I3P	C1-O1-P1-O12
3	D	2702	I3P	C3-C4-O4-P4
3	D	2702	I3P	C4-O4-P4-O43

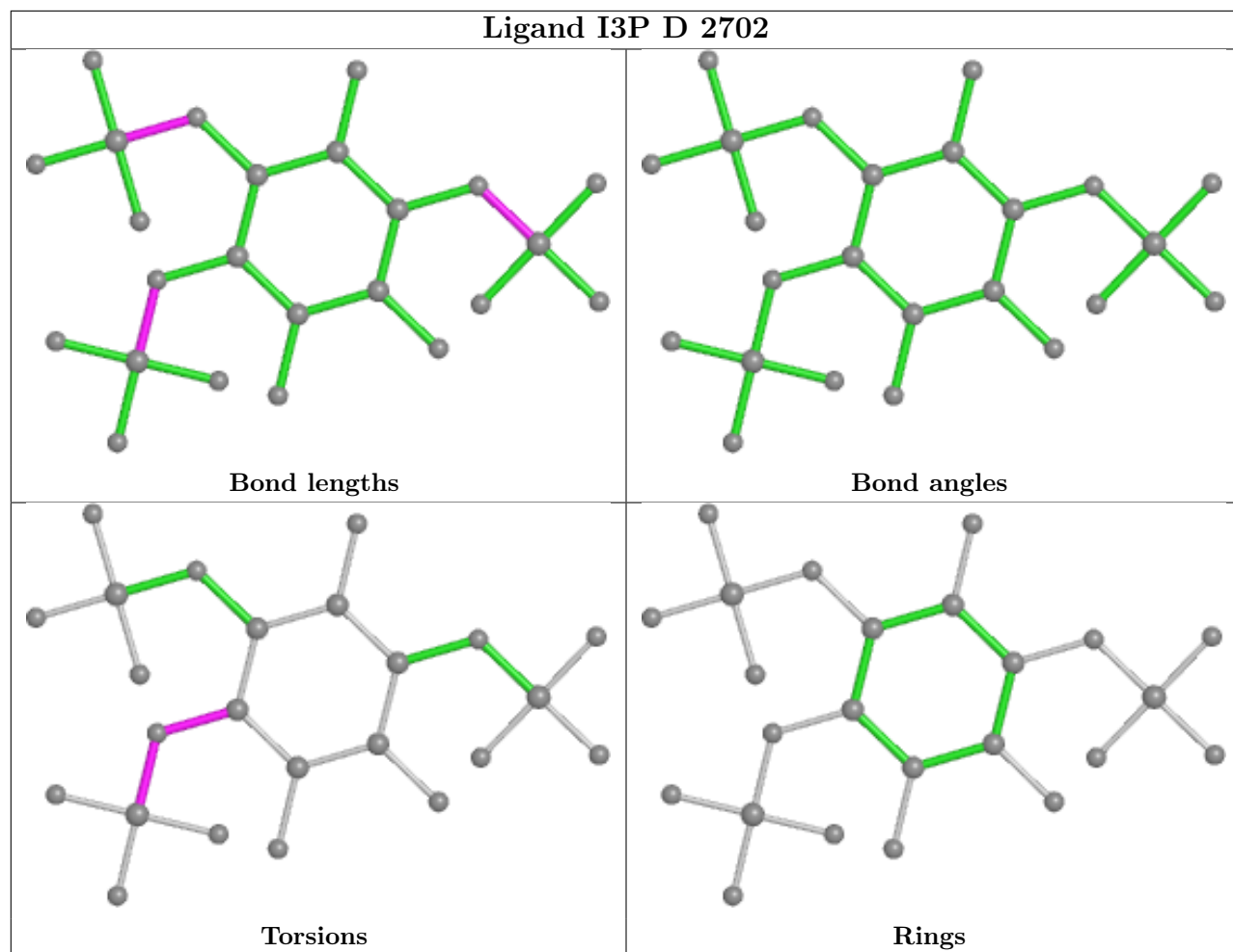
There are no ring outliers.

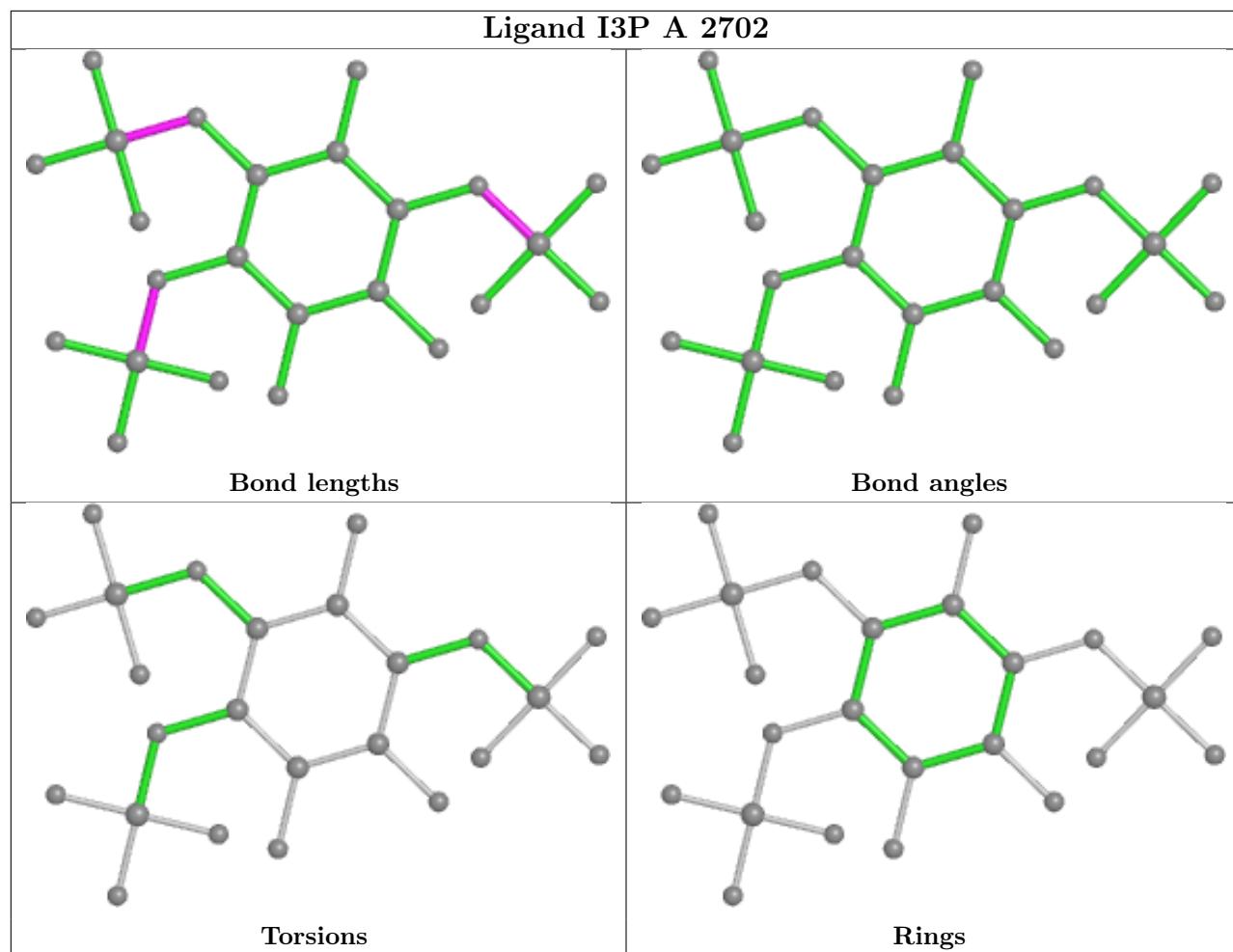
2 monomers are involved in 2 short contacts:

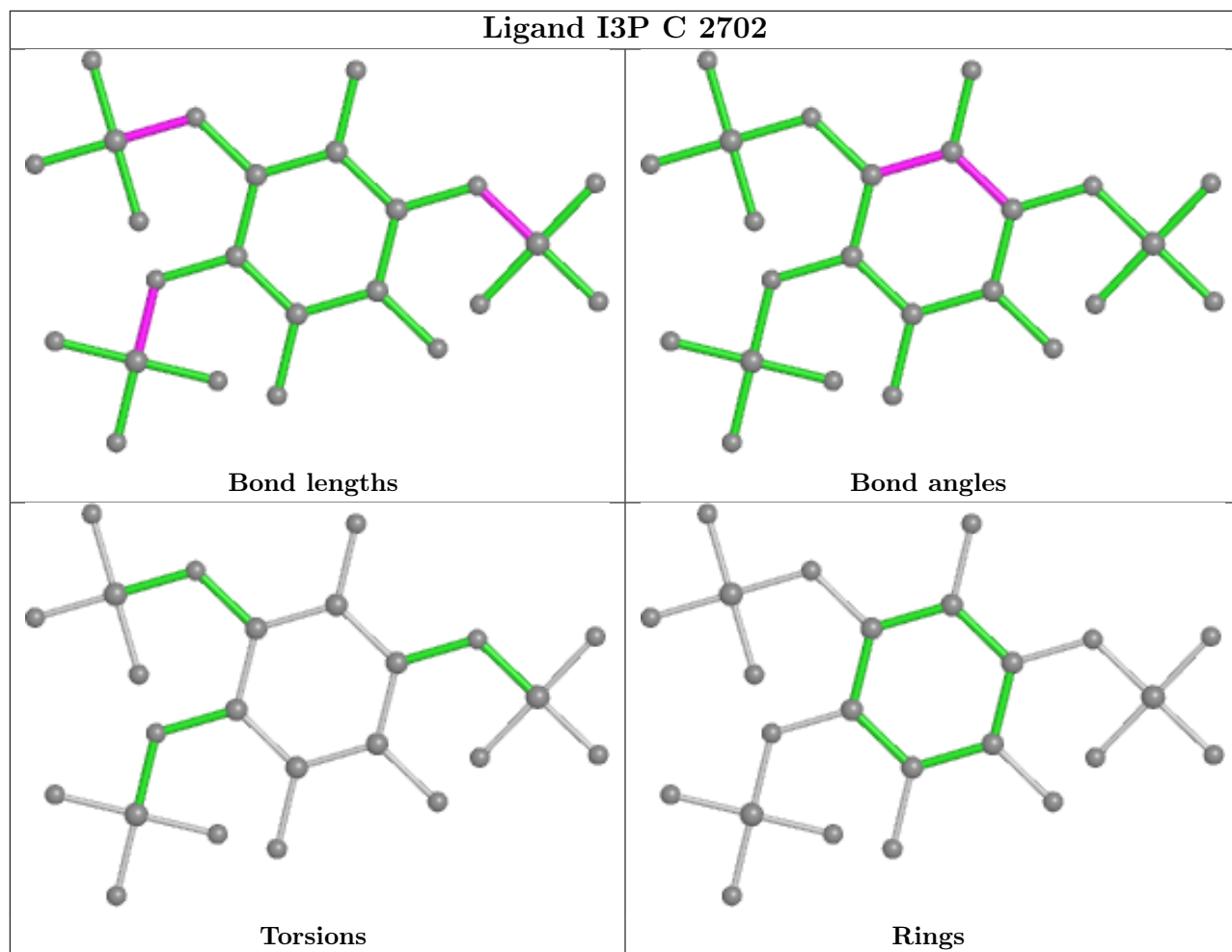
Mol	Chain	Res	Type	Clashes	Symm-Clashes
3	A	2702	I3P	1	0
3	C	2702	I3P	1	0

The following is a two-dimensional graphical depiction of Mogul quality analysis of bond lengths, bond angles, torsion angles, and ring geometry for all instances of the Ligand of Interest. In addition, ligands with molecular weight > 250 and outliers as shown on the validation Tables will also be included. For torsion angles, if less than 5% of the Mogul distribution of torsion angles is within 10 degrees of the torsion angle in question, then that torsion angle is considered an outlier. Any bond that is central to one or more torsion angles identified as an outlier by Mogul will be highlighted in the graph. For rings, the root-mean-square deviation (RMSD) between the ring in question and similar rings identified by Mogul is calculated over all ring torsion angles. If the average RMSD is greater than 60 degrees and the minimal RMSD between the ring in question and any Mogul-identified rings is also greater than 60 degrees, then that ring is considered an outlier. The outliers are highlighted in purple. The color gray indicates Mogul did not find sufficient equivalents in the CSD to analyse the geometry.









5.7 Other polymers [i](#)

There are no such residues in this entry.

5.8 Polymer linkage issues [i](#)

The following chains have linkage breaks:

Mol	Chain	Number of breaks
1	D	5
1	A	3
1	C	3
1	B	3

All chain breaks are listed below:

Model	Chain	Residue-1	Atom-1	Residue-2	Atom-2	Distance (Å)
1	A	1552:TRP	C	1587:ASP	N	50.16

Continued on next page...

Continued from previous page...

Model	Chain	Residue-1	Atom-1	Residue-2	Atom-2	Distance (Å)
1	D	1552:TRP	C	1587:ASP	N	50.02
1	C	1552:TRP	C	1587:ASP	N	48.78
1	B	1552:TRP	C	1587:ASP	N	48.53
1	D	1484:ARG	C	1490:ALA	N	15.83
1	A	1533:ARG	C	1541:ALA	N	15.74
1	B	1533:ARG	C	1541:ALA	N	15.65
1	D	1533:ARG	C	1541:ALA	N	15.40
1	C	1533:ARG	C	1541:ALA	N	14.97
1	D	1508:GLY	C	1515:ALA	N	7.98
1	C	2252:TYR	C	2260:SER	N	6.60
1	D	2252:TYR	C	2260:SER	N	6.26
1	A	2252:TYR	C	2260:SER	N	6.08
1	B	2252:TYR	C	2260:SER	N	5.65

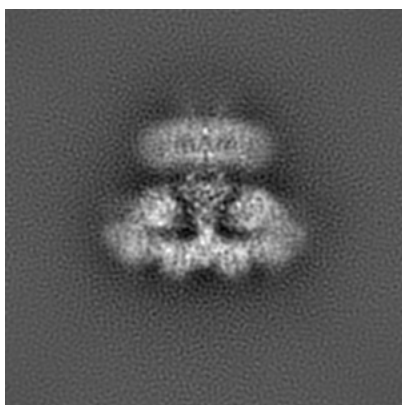
6 Map visualisation [i](#)

This section contains visualisations of the EMDB entry EMD-7987. These allow visual inspection of the internal detail of the map and identification of artifacts.

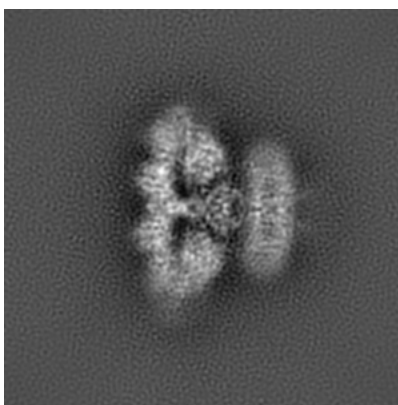
No raw map or half-maps were deposited for this entry and therefore no images, graphs, etc. pertaining to the raw map can be shown.

6.1 Orthogonal projections [i](#)

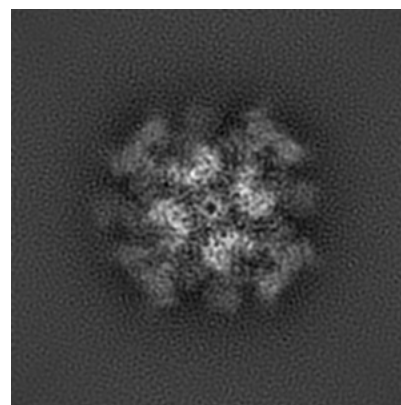
6.1.1 Primary map



X



Y

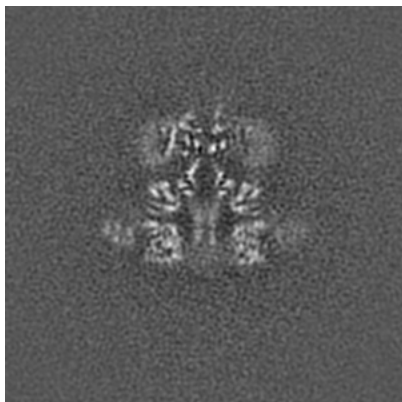


Z

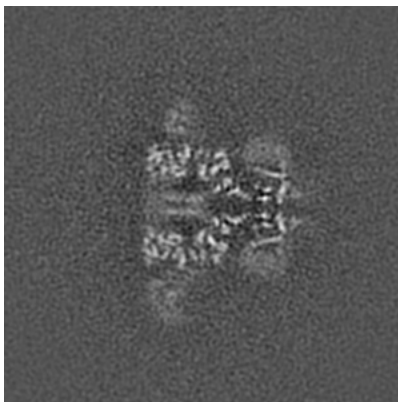
The images above show the map projected in three orthogonal directions.

6.2 Central slices [i](#)

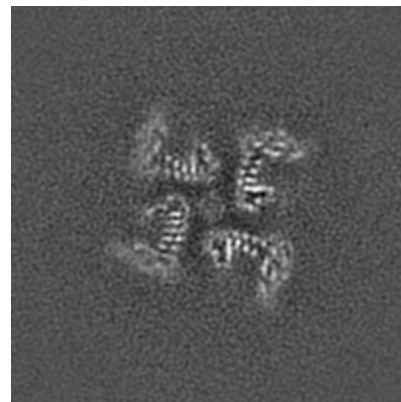
6.2.1 Primary map



X Index: 192



Y Index: 192

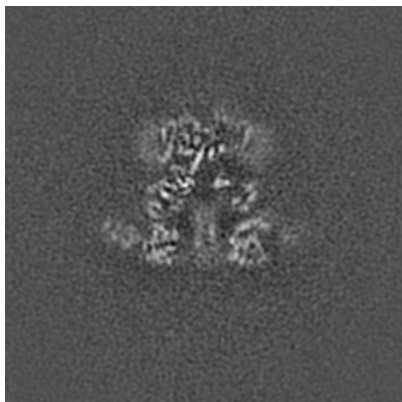


Z Index: 192

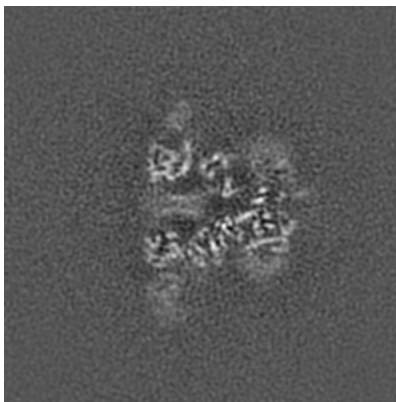
The images above show central slices of the map in three orthogonal directions.

6.3 Largest variance slices [i](#)

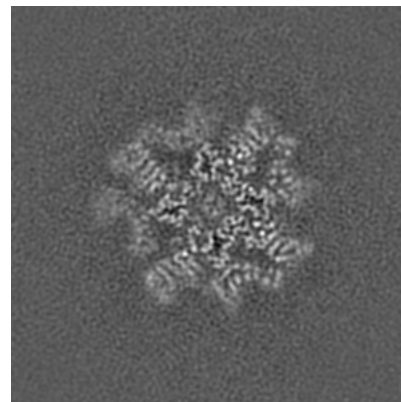
6.3.1 Primary map



X Index: 195



Y Index: 189

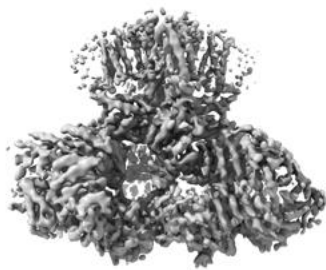


Z Index: 155

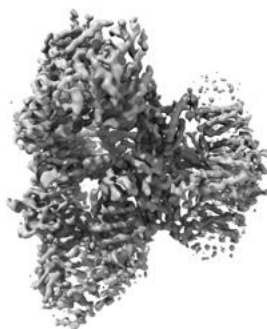
The images above show the largest variance slices of the map in three orthogonal directions.

6.4 Orthogonal surface views [i](#)

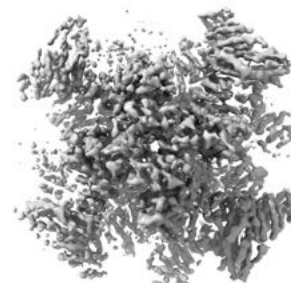
6.4.1 Primary map



X



Y



Z

The images above show the 3D surface view of the map at the recommended contour level 3.06. These images, in conjunction with the slice images, may facilitate assessment of whether an appropriate contour level has been provided.

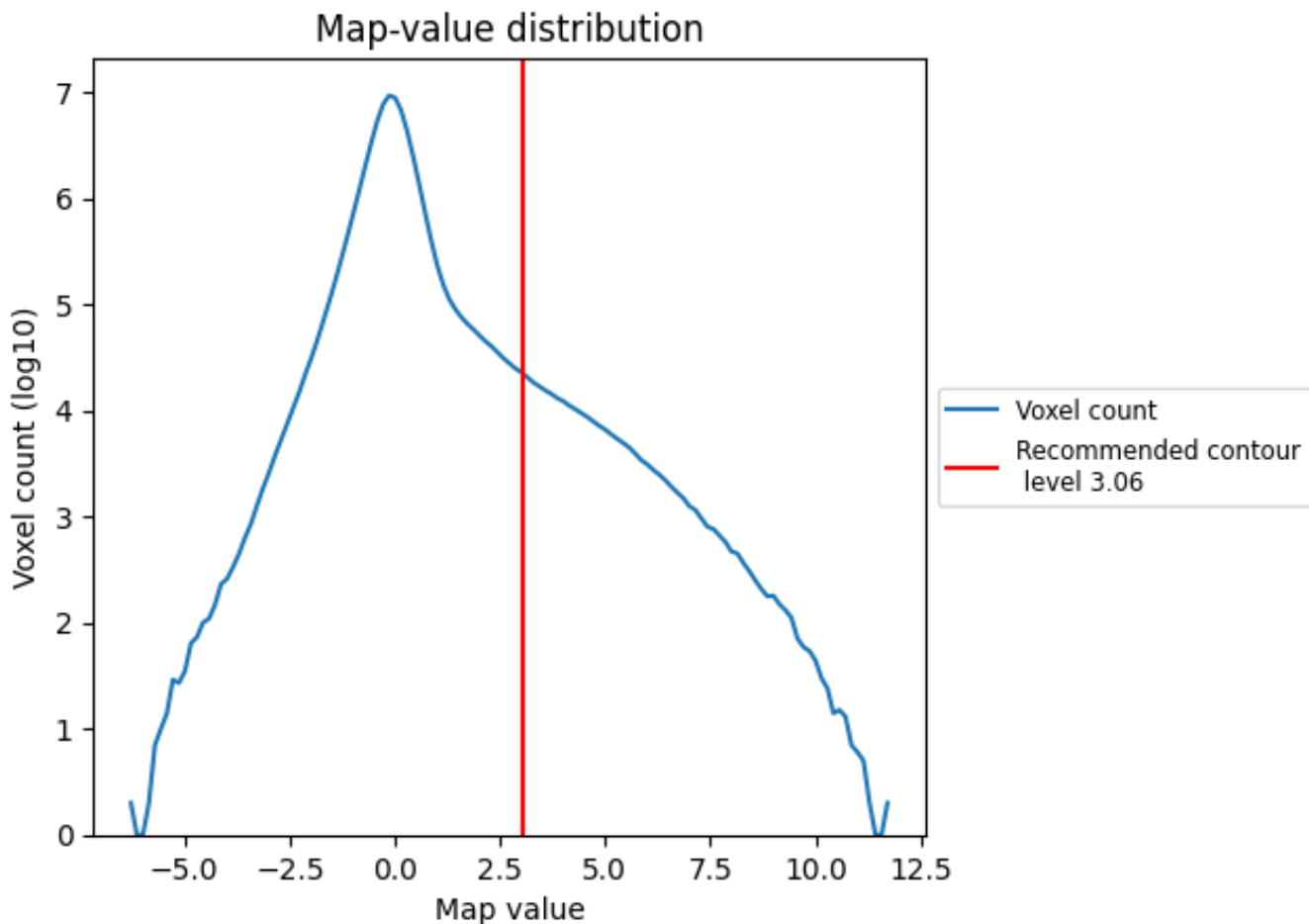
6.5 Mask visualisation

This section was not generated. No masks/segmentation were deposited.

7 Map analysis [i](#)

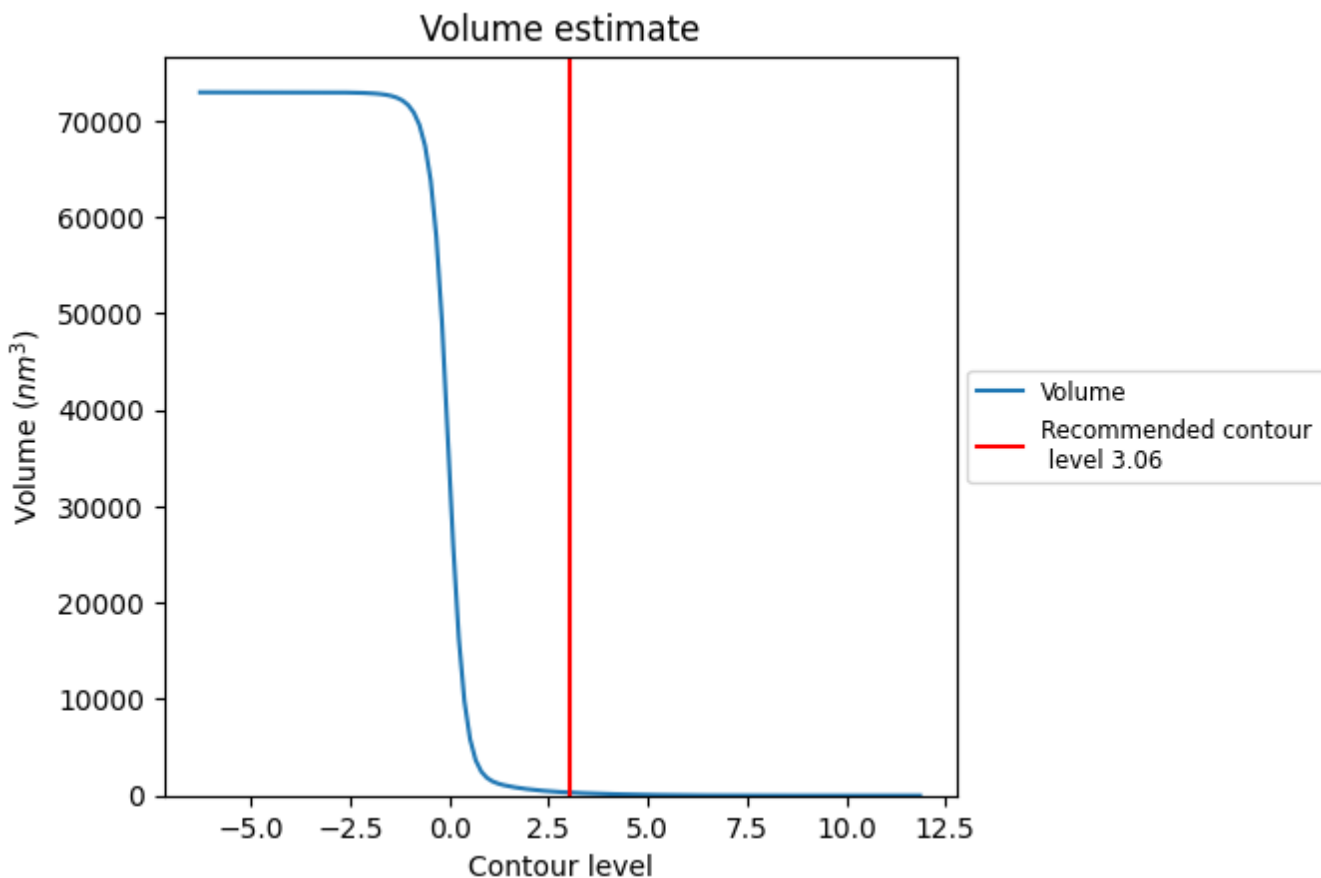
This section contains the results of statistical analysis of the map.

7.1 Map-value distribution [i](#)



The map-value distribution is plotted in 128 intervals along the x-axis. The y-axis is logarithmic. A spike in this graph at zero usually indicates that the volume has been masked.

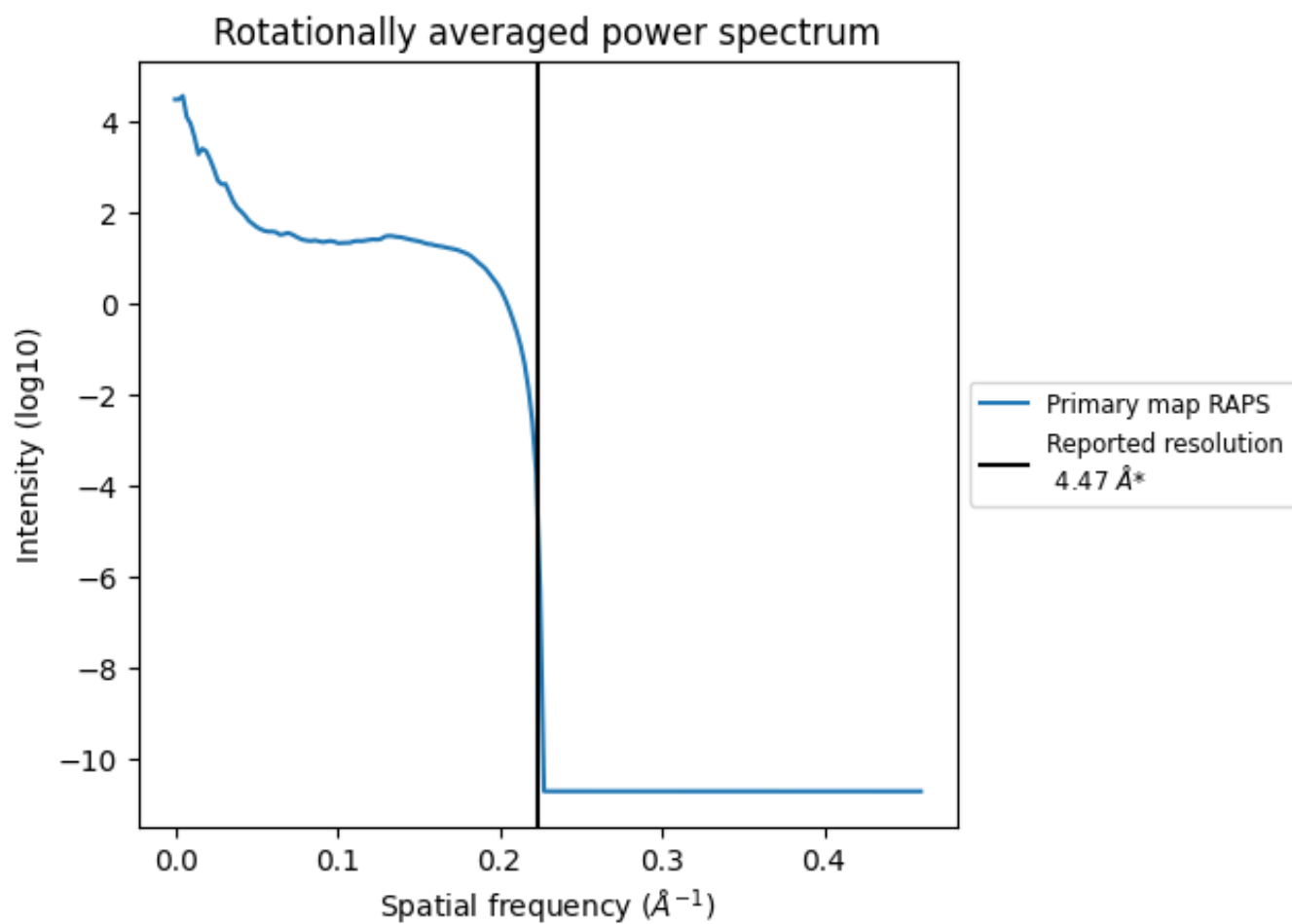
7.2 Volume estimate [i](#)



The volume at the recommended contour level is 308 nm³; this corresponds to an approximate mass of 278 kDa.

The volume estimate graph shows how the enclosed volume varies with the contour level. The recommended contour level is shown as a vertical line and the intersection between the line and the curve gives the volume of the enclosed surface at the given level.

7.3 Rotationally averaged power spectrum [\(i\)](#)



*Reported resolution corresponds to spatial frequency of 0.224 Å⁻¹

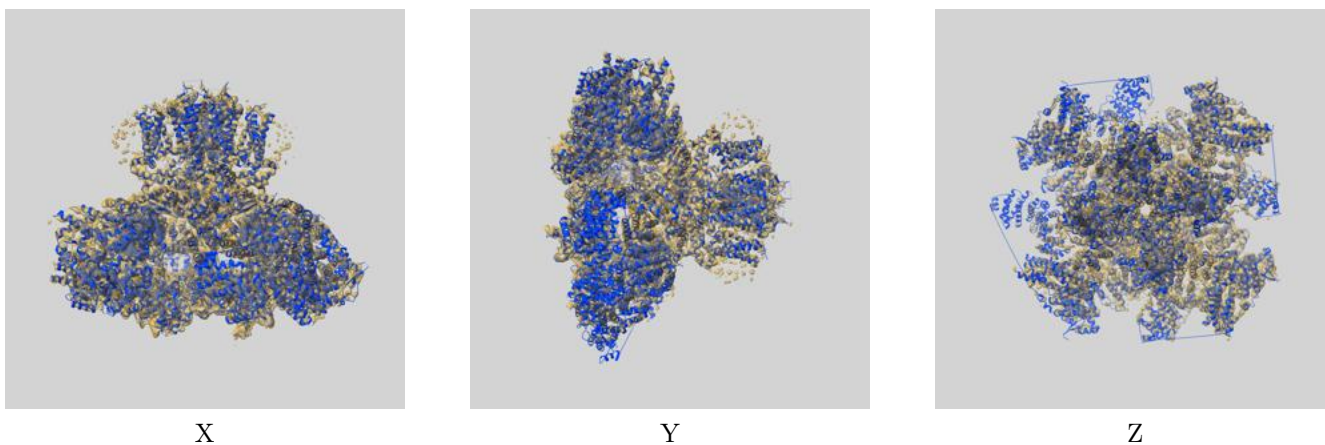
8 Fourier-Shell correlation

This section was not generated. No FSC curve or half-maps provided.

9 Map-model fit [i](#)

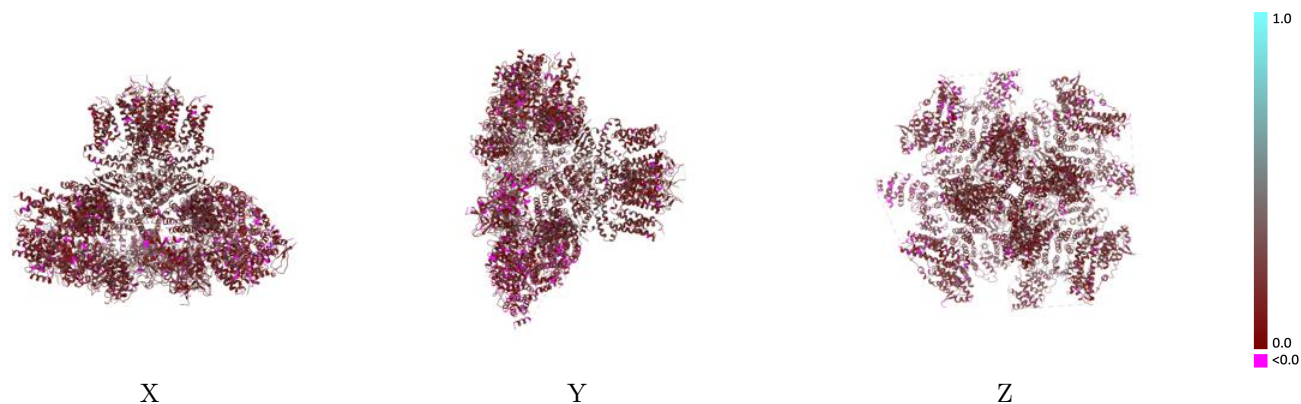
This section contains information regarding the fit between EMDB map EMD-7987 and PDB model 6DR0. Per-residue inclusion information can be found in section 3 on page 5.

9.1 Map-model overlay [i](#)



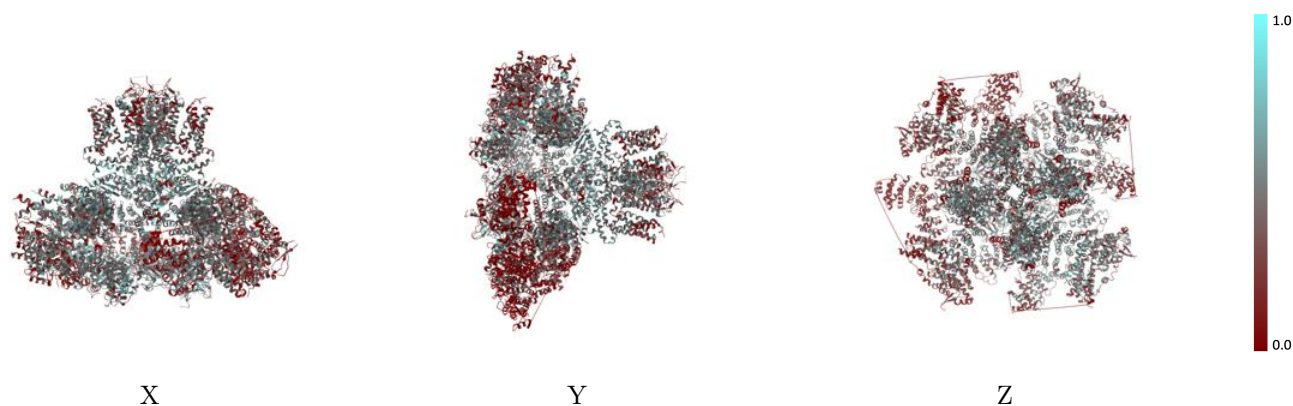
The images above show the 3D surface view of the map at the recommended contour level 3.06 at 50% transparency in yellow overlaid with a ribbon representation of the model coloured in blue. These images allow for the visual assessment of the quality of fit between the atomic model and the map.

9.2 Q-score mapped to coordinate model [i](#)



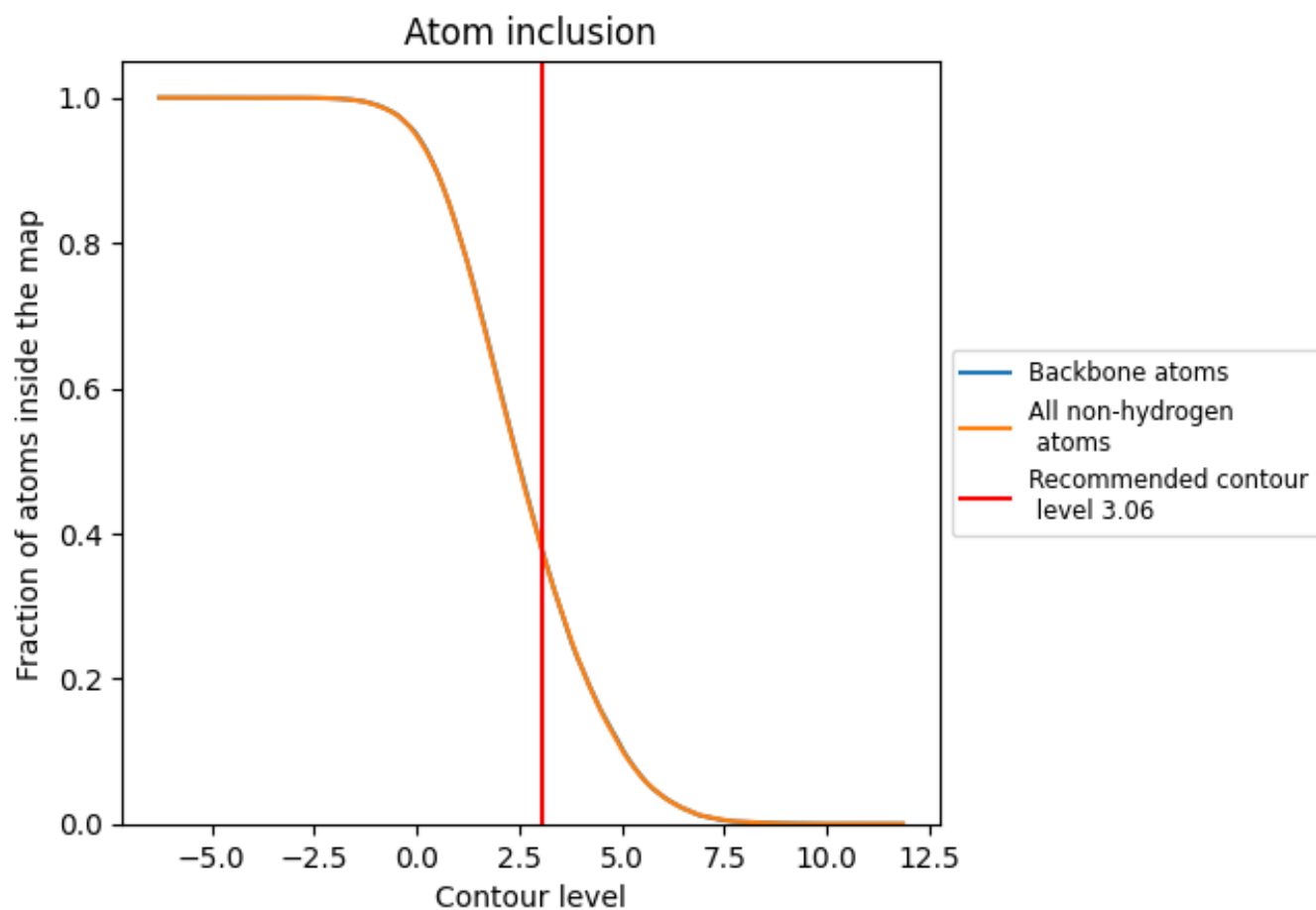
The images above show the model with each residue coloured according to its Q-score. This shows their resolvability in the map with higher Q-score values reflecting better resolvability. Please note: Q-score is calculating the resolvability of atoms, and thus high values are only expected at resolutions at which atoms can be resolved. Low Q-score values may therefore be expected for many entries.

9.3 Atom inclusion mapped to coordinate model [i](#)



The images above show the model with each residue coloured according to its atom inclusion. This shows to what extent they are inside the map at the recommended contour level (3.06).











9.4 Atom inclusion [i](#)



At the recommended contour level, 38% of all backbone atoms, 38% of all non-hydrogen atoms, are inside the map.

9.5 Map-model fit summary [i](#)

The table lists the average atom inclusion at the recommended contour level (3.06) and Q-score for the entire model and for each chain.

Chain	Atom inclusion	Q-score
All	 0.3759	 0.1920
A	 0.4514	 0.2070
B	 0.4068	 0.2020
C	 0.3124	 0.1760
D	 0.3518	 0.1850

