



# Full wwPDB X-ray Structure Validation Report ⓘ

Sep 26, 2023 – 09:46 PM EDT

PDB ID : 6CIF  
Title : Structure of the human endothelial nitric oxide synthase heme domain in complex with N-(1-(Piperidin-4-yl)indolin-5-yl)thiophene-2-carboximidamide  
Authors : Chreifi, G.; Li, H.; Poulos, T.L.  
Deposited on : 2018-02-23  
Resolution : 2.20 Å(reported)

This is a Full wwPDB X-ray Structure Validation Report for a publicly released PDB entry.

We welcome your comments at [validation@mail.wwpdb.org](mailto:validation@mail.wwpdb.org)

A user guide is available at

<https://www.wwpdb.org/validation/2017/XrayValidationReportHelp>

with specific help available everywhere you see the ⓘ symbol.

The types of validation reports are described at

<http://www.wwpdb.org/validation/2017/FAQs#types>.

---

The following versions of software and data (see [references ⓘ](#)) were used in the production of this report:

MolProbity : 4.02b-467  
Mogul : 1.8.5 (274361), CSD as541be (2020)  
Xtrriage (Phenix) : 1.13  
EDS : 2.35.1  
buster-report : 1.1.7 (2018)  
Percentile statistics : 20191225.v01 (using entries in the PDB archive December 25th 2019)  
Refmac : 5.8.0158  
CCP4 : 7.0.044 (Gargrove)  
Ideal geometry (proteins) : Engh & Huber (2001)  
Ideal geometry (DNA, RNA) : Parkinson et al. (1996)  
Validation Pipeline (wwPDB-VP) : 2.35.1

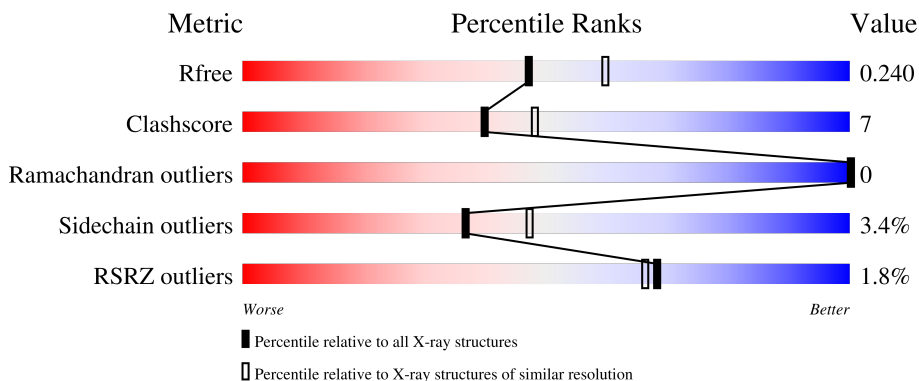
# 1 Overall quality at a glance

The following experimental techniques were used to determine the structure:

*X-RAY DIFFRACTION*

The reported resolution of this entry is 2.20 Å.

Percentile scores (ranging between 0-100) for global validation metrics of the entry are shown in the following graphic. The table shows the number of entries on which the scores are based.



Metric	Whole archive (#Entries)	Similar resolution (#Entries, resolution range(Å))
$R_{free}$	130704	4898 (2.20-2.20)
Clashscore	141614	5594 (2.20-2.20)
Ramachandran outliers	138981	5503 (2.20-2.20)
Sidechain outliers	138945	5504 (2.20-2.20)
RSRZ outliers	127900	4800 (2.20-2.20)

The table below summarises the geometric issues observed across the polymeric chains and their fit to the electron density. The red, orange, yellow and green segments of the lower bar indicate the fraction of residues that contain outliers for  $\geq 3$ , 2, 1 and 0 types of geometric quality criteria respectively. A grey segment represents the fraction of residues that are not modelled. The numeric value for each fraction is indicated below the corresponding segment, with a dot representing fractions  $\leq 5\%$ . The upper red bar (where present) indicates the fraction of residues that have poor fit to the electron density. The numeric value is given above the bar.

Mol	Chain	Length	Quality of chain
1	A	440	 4% 77% 13% • 8%
1	B	440	 79% 12% • 8%
1	C	440	 2% 71% 19% • 9%
1	D	440	 81% 9% • 8%

The following table lists non-polymeric compounds, carbohydrate monomers and non-standard residues in protein, DNA, RNA chains that are outliers for geometric or electron-density-fit criteria:

<b>Mol</b>	<b>Type</b>	<b>Chain</b>	<b>Res</b>	<b>Chirality</b>	<b>Geometry</b>	<b>Clashes</b>	<b>Electron density</b>
5	BTB	B	505	-	-	X	-

## 2 Entry composition [i](#)

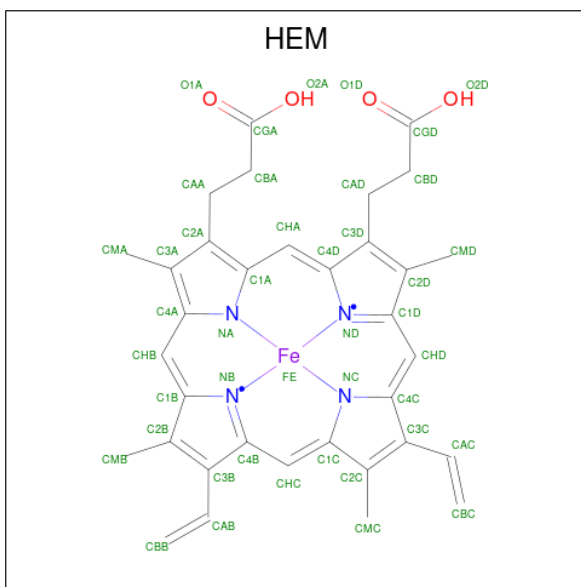
There are 10 unique types of molecules in this entry. The entry contains 13986 atoms, of which 0 are hydrogens and 0 are deuteriums.

In the tables below, the ZeroOcc column contains the number of atoms modelled with zero occupancy, the AltConf column contains the number of residues with at least one atom in alternate conformation and the Trace column contains the number of residues modelled with at most 2 atoms.

- Molecule 1 is a protein called Nitric oxide synthase, endothelial.

Mol	Chain	Residues	Atoms					ZeroOcc	AltConf	Trace
			Total	C	N	O	S			
1	A	404	Total 3237	C 2062	N 570	O 589	S 16	0	2	0
1	B	403	Total 3226	C 2054	N 569	O 587	S 16	0	2	0
1	C	401	Total 3209	C 2044	N 563	O 586	S 16	0	2	0
1	D	404	Total 3241	C 2063	N 572	O 589	S 17	0	3	0

- Molecule 2 is PROTOPORPHYRIN IX CONTAINING FE (three-letter code: HEM) (formula:  $C_{34}H_{32}FeN_4O_4$ ).



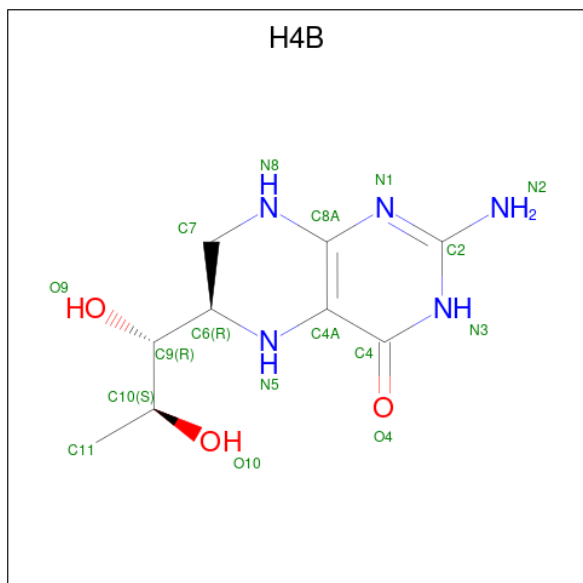
Mol	Chain	Residues	Atoms				ZeroOcc	AltConf	
			Total	C	Fe	N			O
2	A	1	Total 43	C 34	Fe 1	N 4	O 4	0	0
2	B	1	Total 43	C 34	Fe 1	N 4	O 4	0	0

*Continued on next page...*

Continued from previous page...

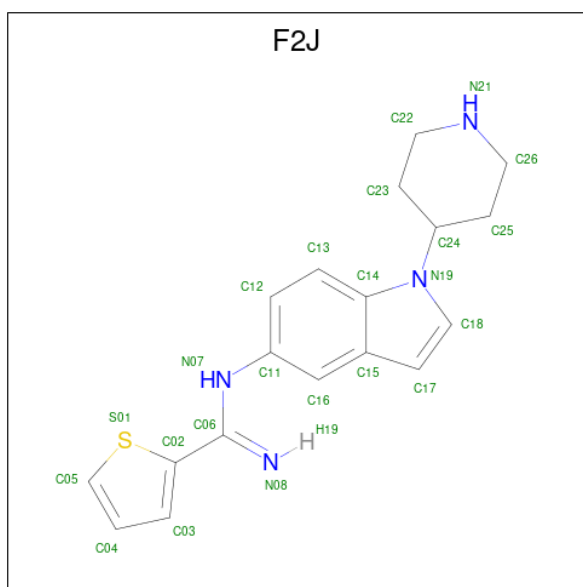
Mol	Chain	Residues	Atoms				ZeroOcc	AltConf	
2	C	1	Total	C	Fe	N	O	0	0
			43	34	1	4	4		
2	D	1	Total	C	Fe	N	O	0	0
			43	34	1	4	4		

- Molecule 3 is 5,6,7,8-TETRAHYDROBIOPTERIN (three-letter code: H4B) (formula:  $C_9H_{15}N_5O_3$ ).



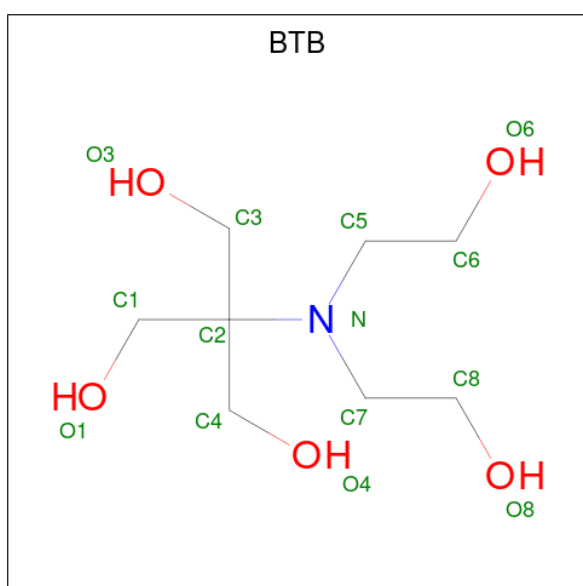
Mol	Chain	Residues	Atoms				ZeroOcc	AltConf
3	A	1	Total	C	N	O	0	0
			17	9	5	3		
3	B	1	Total	C	N	O	0	0
			17	9	5	3		
3	C	1	Total	C	N	O	0	0
			17	9	5	3		
3	D	1	Total	C	N	O	0	0
			17	9	5	3		

- Molecule 4 is N-[1-(piperidin-4-yl)-1H-indol-5-yl]thiophene-2-carboximidamide (three-letter code: F2J) (formula:  $C_{18}H_{20}N_4S$ ).



Mol	Chain	Residues	Atoms				ZeroOcc	AltConf
			Total	C	N	S		
4	A	1	Total	C	N	S	0	0
			23	18	4	1		
4	B	1	Total	C	N	S	0	0
			23	18	4	1		
4	C	1	Total	C	N	S	0	0
			23	18	4	1		
4	D	1	Total	C	N	S	0	0
			23	18	4	1		

- Molecule 5 is 2-[BIS-(2-HYDROXY-ETHYL)-AMINO]-2-HYDROXYMETHYL-PROPAN E-1,3-DIOL (three-letter code: BTB) (formula: C<sub>8</sub>H<sub>19</sub>NO<sub>5</sub>).



Mol	Chain	Residues	Atoms				ZeroOcc	AltConf
5	A	1	Total	C	N	O	0	0
			14	8	1	5		
5	A	1	Total	C	N	O	0	0
			14	8	1	5		
5	B	1	Total	C	N	O	0	0
			14	8	1	5		
5	B	1	Total	C	N	O	0	0
			14	8	1	5		
5	B	1	Total	C	N	O	0	0
			14	8	1	5		
5	C	1	Total	C	N	O	0	0
			14	8	1	5		
5	C	1	Total	C	N	O	0	0
			14	8	1	5		
5	C	1	Total	C	N	O	0	0
			14	8	1	5		
5	D	1	Total	C	N	O	0	0
			14	8	1	5		
5	D	1	Total	C	N	O	0	0
			14	8	1	5		
5	D	1	Total	C	N	O	0	0
			14	8	1	5		

- Molecule 6 is ZINC ION (three-letter code: ZN) (formula: Zn).

Mol	Chain	Residues	Atoms		ZeroOcc	AltConf
6	A	1	Total	Zn	0	0
			1	1		
6	C	1	Total	Zn	0	0
			1	1		

- Molecule 7 is GLYCEROL (three-letter code: GOL) (formula: C<sub>3</sub>H<sub>8</sub>O<sub>3</sub>).



Mol	Chain	Residues	Atoms	ZeroOcc	AltConf
7	A	1	Total C O 6 3 3	0	0
7	C	1	Total C O 6 3 3	0	0

- Molecule 8 is CHLORIDE ION (three-letter code: CL) (formula: Cl).

Mol	Chain	Residues	Atoms	ZeroOcc	AltConf
8	A	1	Total Cl 1 1	0	0
8	B	1	Total Cl 1 1	0	0
8	C	1	Total Cl 1 1	0	0
8	D	1	Total Cl 1 1	0	0

- Molecule 9 is GADOLINIUM ATOM (three-letter code: GD) (formula: Gd).

Mol	Chain	Residues	Atoms	ZeroOcc	AltConf
9	A	1	Total Gd 1 1	0	0
9	B	1	Total Gd 1 1	0	0
9	C	1	Total Gd 1 1	0	0

*Continued on next page...*



*Continued from previous page...*

Mol	Chain	Residues	Atoms		ZeroOcc	AltConf
9	D	1	Total 1	Gd 1	0	0

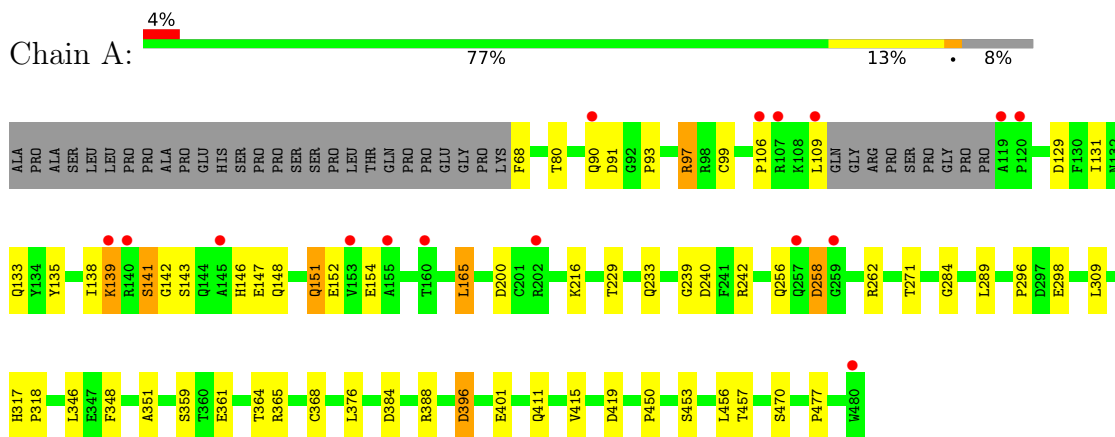
- Molecule 10 is water.

Mol	Chain	Residues	Atoms		ZeroOcc	AltConf
10	A	102	Total 102	O 102	0	0
10	B	185	Total 185	O 185	0	0
10	C	116	Total 116	O 116	0	0
10	D	162	Total 162	O 162	0	0

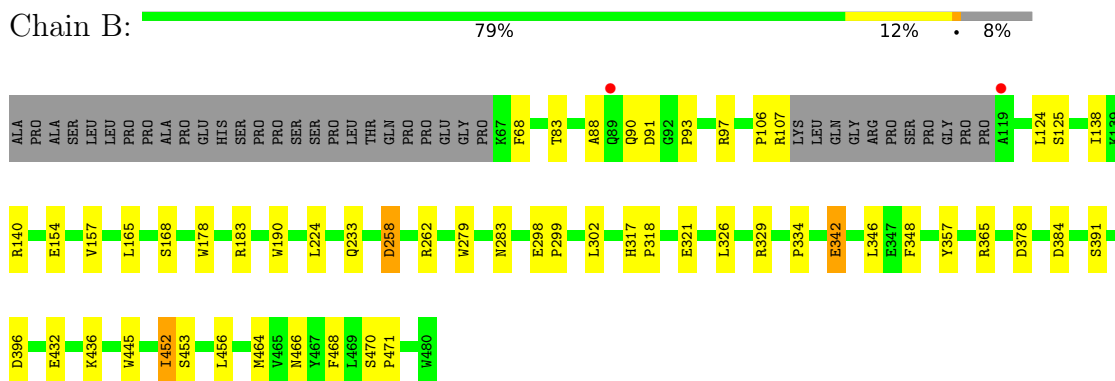
### 3 Residue-property plots

These plots are drawn for all protein, RNA, DNA and oligosaccharide chains in the entry. The first graphic for a chain summarises the proportions of the various outlier classes displayed in the second graphic. The second graphic shows the sequence view annotated by issues in geometry and electron density. Residues are color-coded according to the number of geometric quality criteria for which they contain at least one outlier: green = 0, yellow = 1, orange = 2 and red = 3 or more. A red dot above a residue indicates a poor fit to the electron density ( $RSRZ > 2$ ). Stretches of 2 or more consecutive residues without any outlier are shown as a green connector. Residues present in the sample, but not in the model, are shown in grey.

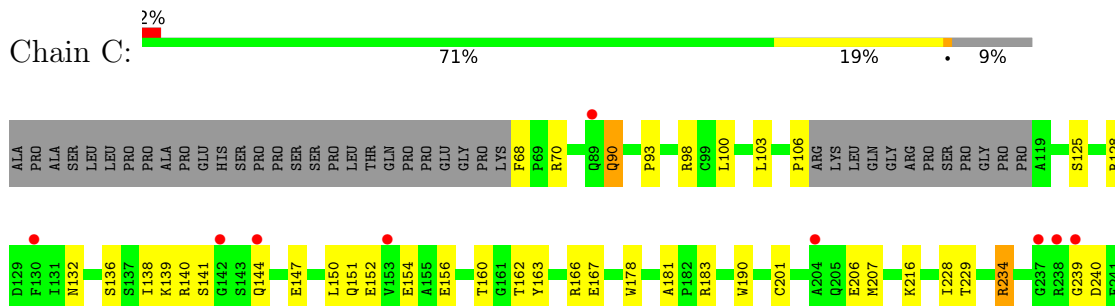
- Molecule 1: Nitric oxide synthase, endothelial

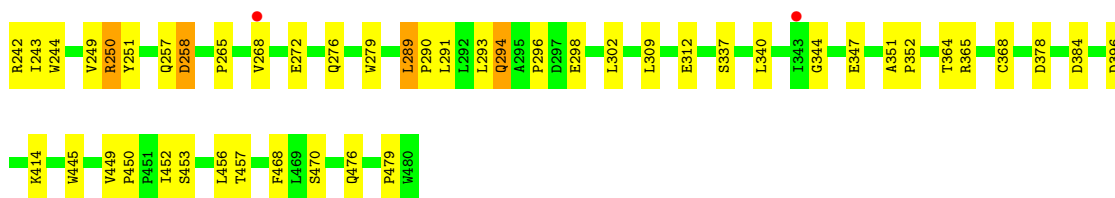


- Molecule 1: Nitric oxide synthase, endothelial



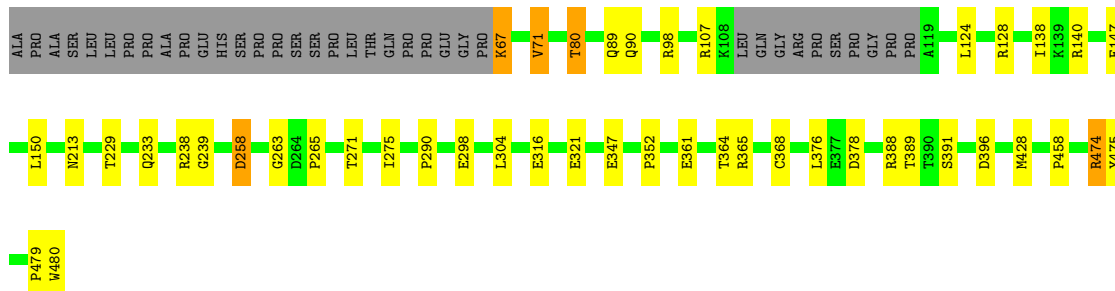
- Molecule 1: Nitric oxide synthase, endothelial





- Molecule 1: Nitric oxide synthase, endothelial

Chain D: 81% 9% 8%



## 4 Data and refinement statistics i

Property	Value	Source
Space group	P 1 21 1	Depositor
Cell constants a, b, c, $\alpha$ , $\beta$ , $\gamma$	59.79Å 152.58Å 108.69Å 90.00° 90.81° 90.00°	Depositor
Resolution (Å)	46.06 – 2.20 88.52 – 2.20	Depositor EDS
% Data completeness (in resolution range)	94.1 (46.06-2.20) 95.5 (88.52-2.20)	Depositor EDS
$R_{merge}$	0.21	Depositor
$R_{sym}$	0.21	Depositor
$\langle I/\sigma(I) \rangle$ <sup>1</sup>	1.75 (at 2.20Å)	Xtrriage
Refinement program	PHENIX (1.11.1-2575_1496: ???)	Depositor
R, $R_{free}$	0.189 , 0.246 0.183 , 0.240	Depositor DCC
$R_{free}$ test set	4712 reflections (5.01%)	wwPDB-VP
Wilson B-factor (Å <sup>2</sup> )	32.4	Xtrriage
Anisotropy	0.745	Xtrriage
Bulk solvent $k_{sol}$ (e/Å <sup>3</sup> ), $B_{sol}$ (Å <sup>2</sup> )	0.35 , 50.7	EDS
L-test for twinning <sup>2</sup>	$\langle  L  \rangle = 0.49$ , $\langle L^2 \rangle = 0.33$	Xtrriage
Estimated twinning fraction	0.098 for h,-k,-l	Xtrriage
$F_o, F_c$ correlation	0.95	EDS
Total number of atoms	13986	wwPDB-VP
Average B, all atoms (Å <sup>2</sup> )	47.0	wwPDB-VP

Xtrriage's analysis on translational NCS is as follows: *The largest off-origin peak in the Patterson function is 3.55% of the height of the origin peak. No significant pseudotranslation is detected.*

<sup>1</sup>Intensities estimated from amplitudes.

<sup>2</sup>Theoretical values of  $\langle |L| \rangle$ ,  $\langle L^2 \rangle$  for acentric reflections are 0.5, 0.333 respectively for untwinned datasets, and 0.375, 0.2 for perfectly twinned datasets.

## 5 Model quality [i](#)

### 5.1 Standard geometry [i](#)

Bond lengths and bond angles in the following residue types are not validated in this section: BTB, HEM, CL, H4B, GOL, F2J, ZN, GD

The Z score for a bond length (or angle) is the number of standard deviations the observed value is removed from the expected value. A bond length (or angle) with  $|Z| > 5$  is considered an outlier worth inspection. RMSZ is the root-mean-square of all Z scores of the bond lengths (or angles).

Mol	Chain	Bond lengths		Bond angles	
		RMSZ	# Z  >5	RMSZ	# Z  >5
1	A	0.39	0/3335	0.56	0/4543
1	B	0.43	0/3324	0.57	0/4528
1	C	0.38	0/3307	0.52	0/4507
1	D	0.42	0/3339	0.56	0/4548
All	All	0.41	0/13305	0.55	0/18126

Chiral center outliers are detected by calculating the chiral volume of a chiral center and verifying if the center is modelled as a planar moiety or with the opposite hand. A planarity outlier is detected by checking planarity of atoms in a peptide group, atoms in a mainchain group or atoms of a sidechain that are expected to be planar.

Mol	Chain	#Chirality outliers	#Planarity outliers
1	D	0	1

There are no bond length outliers.

There are no bond angle outliers.

There are no chirality outliers.

All (1) planarity outliers are listed below:

Mol	Chain	Res	Type	Group
1	D	89	GLN	Peptide

### 5.2 Too-close contacts [i](#)

In the following table, the Non-H and H(model) columns list the number of non-hydrogen atoms and hydrogen atoms in the chain respectively. The H(added) column lists the number of hydrogen atoms added and optimized by MolProbity. The Clashes column lists the number of clashes within the asymmetric unit, whereas Symm-Clashes lists symmetry-related clashes.

Mol	Chain	Non-H	H(model)	H(added)	Clashes	Symm-Clashes
1	A	3237	0	3146	47	0
1	B	3226	0	3134	36	0
1	C	3209	0	3109	60	1
1	D	3241	0	3152	30	0
2	A	43	0	30	1	0
2	B	43	0	30	2	0
2	C	43	0	30	3	0
2	D	43	0	30	2	0
3	A	17	0	15	1	0
3	B	17	0	15	1	0
3	C	17	0	15	1	0
3	D	17	0	15	1	0
4	A	23	0	0	1	0
4	B	23	0	0	0	0
4	C	23	0	0	0	0
4	D	23	0	0	1	0
5	A	28	0	38	4	0
5	B	42	0	54	13	1
5	C	42	0	57	10	0
5	D	42	0	56	10	0
6	A	1	0	0	0	0
6	C	1	0	0	0	0
7	A	6	0	8	0	0
7	C	6	0	8	0	0
8	A	1	0	0	0	0
8	B	1	0	0	0	0
8	C	1	0	0	0	0
8	D	1	0	0	0	0
9	A	1	0	0	0	0
9	B	1	0	0	0	0
9	C	1	0	0	0	0
9	D	1	0	0	0	0
10	A	102	0	0	6	0
10	B	185	0	0	2	0
10	C	116	0	0	10	0
10	D	162	0	0	2	0
All	All	13986	0	12942	192	1

The all-atom clashscore is defined as the number of clashes found per 1000 atoms (including hydrogen atoms). The all-atom clashscore for this structure is 7.

All (192) close contacts within the same asymmetric unit are listed below, sorted by their clash magnitude.

Atom-1	Atom-2	Interatomic distance (Å)	Clash overlap (Å)
1:A:239:GLY:HA3	1:A:296:PRO:HB3	1.46	0.96
1:A:68:PHE:N	10:A:602:HOH:O	2.17	0.78
1:A:256:GLN:NE2	10:A:603:HOH:O	2.18	0.76
2:A:501:HEM:HBB2	2:A:501:HEM:HHC	1.68	0.75
1:D:321:GLU:OE1	5:D:504:BTB:O4	2.05	0.75
1:D:475:TYR:OH	2:D:501:HEM:O2D	2.04	0.74
1:B:258:ASP:OD1	1:B:258:ASP:N	2.18	0.74
1:C:68:PHE:N	10:C:603:HOH:O	2.21	0.72
1:C:258:ASP:OD1	1:C:258:ASP:N	2.23	0.72
1:D:233:GLN:O	1:D:238:ARG:NH2	2.23	0.71
1:A:388:ARG:NH1	1:C:257:GLN:OE1	2.24	0.71
1:C:167:GLU:OE1	10:C:601:HOH:O	2.08	0.70
1:C:160:THR:HG23	1:C:162:THR:H	1.57	0.70
1:B:342:GLU:OE2	10:B:601:HOH:O	2.10	0.70
1:D:258:ASP:OD1	1:D:258:ASP:N	2.18	0.70
1:A:453:SER:HB3	1:A:456:LEU:HD12	1.77	0.67
1:C:279:TRP:HB2	1:C:302:LEU:HD21	1.77	0.67
1:A:388:ARG:HH22	1:C:257:GLN:HE22	1.44	0.65
1:B:445:TRP:HA	1:B:464:MET:CE	2.26	0.65
1:A:298:GLU:OE2	10:A:601:HOH:O	2.14	0.64
1:D:238:ARG:NH1	1:D:239:GLY:O	2.30	0.64
1:D:107:ARG:NH2	10:D:602:HOH:O	2.31	0.64
1:C:365:ARG:HH12	3:C:502:H4B:C4	2.10	0.64
2:C:501:HEM:HBB2	2:C:501:HEM:HHC	1.80	0.64
1:B:138:ILE:HD12	1:B:140:ARG:HD3	1.80	0.63
1:D:71:VAL:HG22	1:D:80:THR:HG22	1.80	0.63
1:A:364:THR:O	1:A:368:CYS:HB2	1.99	0.62
1:C:151:GLN:O	1:C:154:GLU:HG2	2.00	0.61
1:A:384:ASP:OD2	5:A:504:BTB:O3	2.14	0.61
1:A:453:SER:HA	1:B:452:ILE:HG22	1.83	0.60
1:C:234:ARG:NH1	1:C:347:GLU:OE1	2.33	0.60
1:A:135:TYR:CD1	1:A:138:ILE:HD11	2.37	0.60
1:B:298:GLU:OE2	5:B:505:BTB:N	2.34	0.59
1:B:90:GLN:HB3	1:B:468:PHE:CD1	2.38	0.59
1:C:90:GLN:HB2	1:C:468:PHE:CD1	2.38	0.59
1:C:147:GLU:HA	1:C:150:LEU:HD12	1.84	0.59
1:A:233:GLN:HB3	1:A:348:PHE:CE2	2.37	0.59
1:A:365:ARG:HH12	3:A:502:H4B:C4	2.16	0.58
1:B:279:TRP:HB2	1:B:302:LEU:HD21	1.84	0.58
1:C:70:ARG:NH2	10:C:616:HOH:O	2.35	0.58
5:B:505:BTB:O3	5:B:505:BTB:O1	2.16	0.58
1:D:213:ASN:HB3	10:D:742:HOH:O	2.02	0.58

*Continued on next page...*

*Continued from previous page...*

Atom-1	Atom-2	Interatomic distance (Å)	Clash overlap (Å)
1:A:242:ARG:NH2	1:A:477:PRO:O	2.37	0.58
1:A:384:ASP:OD2	5:A:504:BTB:H72	2.05	0.57
1:D:365:ARG:HH12	3:D:502:H4B:C4	2.18	0.57
1:C:244:TRP:NE1	1:C:294:GLN:OE1	2.36	0.56
1:A:151:GLN:HA	1:A:154:GLU:HB3	1.87	0.56
1:C:291:LEU:HD13	1:C:293:LEU:HD21	1.89	0.55
1:B:298:GLU:CD	5:B:505:BTB:H31	2.26	0.55
1:C:234:ARG:O	10:C:602:HOH:O	2.18	0.55
1:A:317:HIS:NE2	1:A:401:GLU:OE1	2.35	0.55
1:B:183:ARG:HB2	2:B:501:HEM:HBD2	1.88	0.55
2:B:501:HEM:HHC	2:B:501:HEM:HBB2	1.89	0.54
1:C:228:ILE:HD11	1:C:351:ALA:HB1	1.89	0.54
1:A:411:GLN:NE2	10:A:613:HOH:O	2.41	0.54
2:D:501:HEM:HBB2	2:D:501:HEM:HHC	1.90	0.54
5:D:506:BTB:O3	5:D:506:BTB:O1	2.21	0.54
1:A:317:HIS:CG	1:A:318:PRO:HD2	2.43	0.54
1:B:445:TRP:HA	1:B:464:MET:HE1	1.89	0.53
5:B:506:BTB:O3	5:B:506:BTB:O4	2.26	0.53
1:B:262:ARG:NE	1:B:283:ASN:O	2.39	0.53
1:C:132:ASN:O	1:C:136:SER:OG	2.17	0.53
1:C:207:MET:HG2	1:C:293:LEU:HD13	1.91	0.53
1:C:125:SER:HA	1:C:128:ARG:NH2	2.24	0.53
1:C:229:THR:O	1:C:351:ALA:HA	2.09	0.53
1:A:262:ARG:HE	1:A:284:GLY:HA2	1.73	0.53
1:C:139:LYS:NZ	10:C:621:HOH:O	2.42	0.52
1:C:384:ASP:OD2	5:C:504:BTB:O6	2.25	0.52
1:D:361:GLU:OE1	4:D:503:F2J:N07	2.42	0.52
1:A:216:LYS:HG3	1:A:309:LEU:HD11	1.92	0.52
1:A:450:PRO:HG2	1:A:457:THR:HG21	1.92	0.51
1:C:272:GLU:O	1:C:276:GLN:HG3	2.10	0.51
1:D:128:ARG:HG3	1:D:150:LEU:HD22	1.93	0.51
1:C:156:GLU:O	1:C:160:THR:HG22	2.11	0.51
1:C:183:ARG:HB2	2:C:501:HEM:HBD2	1.92	0.51
1:C:242:ARG:HD3	1:C:479:PRO:HG3	1.93	0.51
1:D:271:THR:O	1:D:275:ILE:HG12	2.11	0.51
1:C:181:ALA:HB1	2:C:501:HEM:HBD1	1.92	0.50
1:A:388:ARG:HH12	1:C:257:GLN:CD	2.12	0.50
1:D:378:ASP:OD1	5:D:506:BTB:H72	2.11	0.50
1:B:453:SER:HB3	1:B:456:LEU:HD12	1.92	0.50
1:B:321:GLU:HB2	1:C:378:ASP:OD2	2.11	0.50
1:D:479:PRO:HD2	1:D:480:TRP:CE3	2.47	0.50

*Continued on next page...*



*Continued from previous page...*

Atom-1	Atom-2	Interatomic distance (Å)	Clash overlap (Å)
1:A:258:ASP:N	1:A:258:ASP:OD1	2.45	0.50
1:C:450:PRO:HG2	1:C:457:THR:HG21	1.92	0.49
1:B:445:TRP:HA	1:B:464:MET:HE2	1.92	0.49
1:C:298:GLU:OE1	5:C:506:BTB:H11	2.12	0.49
1:A:361:GLU:OE1	4:A:503:F2J:N07	2.45	0.49
1:D:479:PRO:HD2	1:D:480:TRP:CZ3	2.48	0.49
1:C:239:GLY:CA	1:C:296:PRO:HB3	2.43	0.49
1:C:144:GLN:NE2	10:C:624:HOH:O	2.46	0.48
1:D:290:PRO:HB3	1:D:304:LEU:HD23	1.96	0.48
1:A:141:SER:HG	1:A:142:GLY:H	1.61	0.48
1:C:453:SER:HB3	1:C:456:LEU:HD12	1.94	0.48
1:A:90:GLN:NE2	10:A:615:HOH:O	2.46	0.48
1:C:289:LEU:HD12	1:C:290:PRO:HD2	1.95	0.48
1:B:93:PRO:HG3	1:B:106:PRO:HB3	1.95	0.47
1:D:298:GLU:OE2	5:D:505:BTB:O4	2.31	0.47
1:B:342:GLU:HG3	1:B:342:GLU:O	2.13	0.47
1:A:97:ARG:HG3	1:B:88:ALA:HB3	1.95	0.47
1:C:251:TYR:OH	1:C:312:GLU:OE2	2.25	0.47
1:D:138:ILE:HG13	1:D:140:ARG:HB3	1.97	0.47
5:B:505:BTB:O3	5:B:505:BTB:H51	2.15	0.47
1:D:378:ASP:OD1	5:D:506:BTB:H11	2.15	0.46
1:D:364:THR:O	1:D:368:CYS:HB2	2.15	0.46
1:C:239:GLY:HA2	1:C:296:PRO:HB3	1.98	0.46
1:A:141:SER:OG	1:A:142:GLY:N	2.48	0.46
5:B:506:BTB:H71	5:B:506:BTB:H61	1.30	0.46
1:A:91:ASP:OD1	1:B:97:ARG:NH1	2.48	0.46
1:A:139:LYS:NZ	1:A:139:LYS:HB3	2.29	0.46
1:A:415:VAL:O	10:A:604:HOH:O	2.21	0.46
1:C:364:THR:O	1:C:368:CYS:HB2	2.16	0.46
1:D:147:GLU:HA	1:D:150:LEU:HD12	1.97	0.46
1:D:389:THR:HG22	1:D:391:SER:H	1.81	0.46
1:B:68:PHE:CD1	1:B:83:THR:HA	2.50	0.45
5:A:505:BTB:H51	5:A:505:BTB:O3	2.16	0.45
5:D:504:BTB:H32	5:D:504:BTB:H51	1.65	0.45
1:B:124:LEU:HD21	1:B:154:GLU:HG2	1.98	0.45
1:D:229:THR:O	1:D:352:PRO:HD2	2.17	0.45
5:A:504:BTB:H52	5:A:504:BTB:H41	1.39	0.45
1:A:141:SER:HG	1:A:142:GLY:N	2.15	0.45
1:C:290:PRO:HG2	1:C:302:LEU:HD11	1.99	0.45
1:C:298:GLU:CD	5:C:506:BTB:H11	2.37	0.45
1:C:364:THR:HG21	1:C:452:ILE:HG23	1.98	0.45

*Continued on next page...*

*Continued from previous page...*

Atom-1	Atom-2	Interatomic distance (Å)	Clash overlap (Å)
5:C:505:BTB:H41	5:C:505:BTB:H71	1.43	0.45
5:C:506:BTB:H12	5:C:506:BTB:H51	1.83	0.44
1:D:124:LEU:HA	1:D:124:LEU:HD23	1.66	0.44
1:D:388:ARG:HE	1:D:388:ARG:HB2	1.49	0.44
1:C:201:CYS:SG	1:C:206:GLU:HG2	2.57	0.44
1:B:317:HIS:CG	1:B:318:PRO:HD2	2.53	0.44
1:A:165:LEU:HD22	1:A:346:LEU:HD12	2.00	0.44
1:A:216:LYS:CG	1:A:309:LEU:HD11	2.48	0.44
5:D:506:BTB:H72	5:D:506:BTB:H11	1.56	0.44
1:C:141:SER:N	10:C:610:HOH:O	2.51	0.44
1:D:347:GLU:OE2	1:D:474:ARG:NH2	2.51	0.43
1:B:365:ARG:HH12	3:B:502:H4B:C4	2.31	0.43
1:C:229:THR:O	1:C:352:PRO:HD2	2.17	0.43
5:B:504:BTB:H12	5:B:504:BTB:H72	1.61	0.43
5:B:505:BTB:H52	5:B:505:BTB:H11	1.90	0.43
1:B:432:GLU:HG3	1:B:436:LYS:NZ	2.33	0.43
1:C:100:LEU:HB3	1:C:103:LEU:HD12	2.00	0.43
1:B:233:GLN:HB3	1:B:348:PHE:CE2	2.53	0.43
5:B:504:BTB:H62	10:B:603:HOH:O	2.19	0.43
1:B:178:TRP:CE3	1:B:190:TRP:HA	2.54	0.43
1:C:216:LYS:HB2	1:C:309:LEU:HD11	2.01	0.43
1:C:265:PRO:HA	1:C:268:VAL:HG13	2.01	0.43
1:C:93:PRO:HB3	1:C:106:PRO:HB2	2.00	0.43
1:C:445:TRP:CZ2	1:C:449:VAL:HG21	2.54	0.43
5:C:504:BTB:H52	5:C:504:BTB:H12	1.66	0.42
1:A:93:PRO:HG3	1:A:106:PRO:HB3	2.01	0.42
5:B:504:BTB:H51	5:B:504:BTB:H32	1.59	0.42
5:B:506:BTB:H32	5:B:506:BTB:H52	1.45	0.42
1:A:200:ASP:OD1	1:A:200:ASP:N	2.51	0.42
1:A:271:THR:OG1	1:A:289:LEU:HD21	2.20	0.42
1:A:229:THR:O	1:A:351:ALA:HA	2.20	0.42
5:B:505:BTB:HO1	5:B:505:BTB:HO3	1.60	0.42
5:D:506:BTB:O3	5:D:506:BTB:O4	2.33	0.42
1:A:368:CYS:SG	1:A:376:LEU:HD13	2.59	0.42
1:A:388:ARG:NH2	1:C:257:GLN:HE22	2.16	0.42
1:C:178:TRP:CE3	1:C:190:TRP:HA	2.55	0.42
1:C:249:VAL:O	1:C:250:ARG:HG2	2.19	0.42
1:A:99:CYS:HB3	1:B:466:ASN:HB3	2.02	0.42
1:C:340:LEU:HD12	1:C:476:GLN:OE1	2.20	0.42
1:D:263:GLY:O	1:D:265:PRO:HD3	2.20	0.42
1:A:143:SER:HA	1:A:147:GLU:CD	2.40	0.42

*Continued on next page...*

Continued from previous page...

Atom-1	Atom-2	Interatomic distance (Å)	Clash overlap (Å)
1:B:445:TRP:CA	1:B:464:MET:HE2	2.50	0.42
1:B:165:LEU:HG	1:B:346:LEU:HD12	2.02	0.41
5:C:506:BTB:H41	5:C:506:BTB:H71	1.86	0.41
1:B:124:LEU:HD13	1:B:157:VAL:HG21	2.02	0.41
1:B:470:SER:HA	1:B:471:PRO:C	2.41	0.41
5:D:505:BTB:H12	5:D:505:BTB:H71	1.80	0.41
1:A:141:SER:HG	1:A:146:HIS:CE1	2.37	0.41
1:C:242:ARG:NH1	10:C:620:HOH:O	2.41	0.41
1:A:359:SER:OG	1:A:419:ASP:HA	2.20	0.41
1:C:138:ILE:O	1:C:139:LYS:HB3	2.20	0.41
5:C:506:BTB:O8	5:C:506:BTB:H52	2.19	0.41
1:A:129:ASP:O	1:A:133:GLN:HG3	2.21	0.41
1:A:396:ASP:OD1	1:A:396:ASP:N	2.54	0.41
1:B:384:ASP:OD2	5:C:505:BTB:H62	2.20	0.41
1:C:163:TYR:OH	1:C:344:GLY:O	2.33	0.41
1:D:428:MET:HG3	1:D:458:PRO:HB2	2.02	0.41
1:C:243:ILE:HB	1:C:337:SER:O	2.21	0.41
5:C:505:BTB:H11	5:C:505:BTB:H51	1.85	0.41
1:D:67:LYS:NZ	1:D:67:LYS:HB3	2.36	0.41
1:D:368:CYS:SG	1:D:376:LEU:HD13	2.61	0.41
5:D:505:BTB:H32	5:D:505:BTB:H51	1.70	0.41
1:B:378:ASP:OD2	5:B:506:BTB:H81	2.21	0.40
1:C:166:ARG:NH1	10:C:613:HOH:O	2.32	0.40
1:B:334:PRO:HB3	1:B:357:TYR:CZ	2.56	0.40
1:C:103:LEU:O	10:C:604:HOH:O	2.22	0.40
1:B:90:GLN:HG3	1:B:91:ASP:N	2.36	0.40
1:B:298:GLU:HG3	1:B:299:PRO:HD2	2.04	0.40

All (1) symmetry-related close contacts are listed below. The label for Atom-2 includes the symmetry operator and encoded unit-cell translations to be applied.

Atom-1	Atom-2	Interatomic distance (Å)	Clash overlap (Å)
1:C:152:GLU:OE2	5:B:505:BTB:O3[2_352]	2.13	0.07

## 5.3 Torsion angles [i](#)

### 5.3.1 Protein backbone [i](#)

In the following table, the Percentiles column shows the percent Ramachandran outliers of the chain as a percentile score with respect to all X-ray entries followed by that with respect to entries

of similar resolution.

The Analysed column shows the number of residues for which the backbone conformation was analysed, and the total number of residues.

Mol	Chain	Analysed	Favoured	Allowed	Outliers	Percentiles	
1	A	402/440 (91%)	379 (94%)	23 (6%)	0	100	100
1	B	401/440 (91%)	391 (98%)	10 (2%)	0	100	100
1	C	399/440 (91%)	382 (96%)	17 (4%)	0	100	100
1	D	403/440 (92%)	395 (98%)	8 (2%)	0	100	100
All	All	1605/1760 (91%)	1547 (96%)	58 (4%)	0	100	100

There are no Ramachandran outliers to report.

### 5.3.2 Protein sidechains [i](#)

In the following table, the Percentiles column shows the percent sidechain outliers of the chain as a percentile score with respect to all X-ray entries followed by that with respect to entries of similar resolution.

The Analysed column shows the number of residues for which the sidechain conformation was analysed, and the total number of residues.

Mol	Chain	Analysed	Rotameric	Outliers	Percentiles	
1	A	345/373 (92%)	331 (96%)	14 (4%)	30	39
1	B	344/373 (92%)	332 (96%)	12 (4%)	36	46
1	C	342/373 (92%)	330 (96%)	12 (4%)	36	46
1	D	346/373 (93%)	337 (97%)	9 (3%)	46	58
All	All	1377/1492 (92%)	1330 (97%)	47 (3%)	37	47

All (47) residues with a non-rotameric sidechain are listed below:

Mol	Chain	Res	Type
1	A	80	THR
1	A	97	ARG
1	A	109	LEU
1	A	131	ILE
1	A	139	LYS
1	A	141	SER
1	A	148	GLN
1	A	151	GLN

*Continued on next page...*

*Continued from previous page...*

Mol	Chain	Res	Type
1	A	152	GLU
1	A	165	LEU
1	A	240	ASP
1	A	258	ASP
1	A	396	ASP
1	A	470	SER
1	B	107	ARG
1	B	125	SER
1	B	168[A]	SER
1	B	168[B]	SER
1	B	224	LEU
1	B	258	ASP
1	B	326	LEU
1	B	329	ARG
1	B	342	GLU
1	B	391	SER
1	B	396	ASP
1	B	452	ILE
1	C	90	GLN
1	C	98	ARG
1	C	140	ARG
1	C	234	ARG
1	C	240	ASP
1	C	250	ARG
1	C	258	ASP
1	C	289	LEU
1	C	294	GLN
1	C	396	ASP
1	C	414	LYS
1	C	470	SER
1	D	67	LYS
1	D	71	VAL
1	D	80	THR
1	D	90	GLN
1	D	98	ARG
1	D	258	ASP
1	D	316	GLU
1	D	396	ASP
1	D	474	ARG

Sometimes sidechains can be flipped to improve hydrogen bonding and reduce clashes. There are no such sidechains identified.

### 5.3.3 RNA [i](#)

There are no RNA molecules in this entry.

## 5.4 Non-standard residues in protein, DNA, RNA chains [i](#)

There are no non-standard protein/DNA/RNA residues in this entry.

## 5.5 Carbohydrates [i](#)

There are no monosaccharides in this entry.

## 5.6 Ligand geometry [i](#)

Of 35 ligands modelled in this entry, 10 are monoatomic - leaving 25 for Mogul analysis.

In the following table, the Counts columns list the number of bonds (or angles) for which Mogul statistics could be retrieved, the number of bonds (or angles) that are observed in the model and the number of bonds (or angles) that are defined in the Chemical Component Dictionary. The Link column lists molecule types, if any, to which the group is linked. The Z score for a bond length (or angle) is the number of standard deviations the observed value is removed from the expected value. A bond length (or angle) with  $|Z| > 2$  is considered an outlier worth inspection. RMSZ is the root-mean-square of all Z scores of the bond lengths (or angles).

Mol	Type	Chain	Res	Link	Bond lengths			Bond angles		
					Counts	RMSZ	# Z  > 2	Counts	RMSZ	# Z  > 2
4	F2J	C	503	-	24,26,26	1.75	5 (20%)	22,36,36	2.62	6 (27%)
2	HEM	B	501	1	41,50,50	1.51	6 (14%)	45,82,82	1.87	12 (26%)
3	H4B	B	502	-	16,18,18	1.03	2 (12%)	11,26,26	2.68	5 (45%)
5	BTB	C	505	-	13,13,13	0.61	0	7,16,16	1.06	0
7	GOL	A	507	-	5,5,5	0.32	0	5,5,5	0.40	0
5	BTB	D	504	9	13,13,13	0.42	0	7,16,16	0.52	0
5	BTB	D	506	-	13,13,13	0.58	0	7,16,16	1.06	0
4	F2J	A	503	-	24,26,26	1.74	6 (25%)	22,36,36	2.93	8 (36%)
2	HEM	A	501	1	41,50,50	1.57	6 (14%)	45,82,82	1.69	12 (26%)
5	BTB	B	506	-	13,13,13	0.42	0	7,16,16	0.62	0
5	BTB	A	504	-	13,13,13	0.66	0	7,16,16	0.74	0
5	BTB	C	504	-	13,13,13	0.49	0	7,16,16	0.69	0
7	GOL	C	508	-	5,5,5	0.32	0	5,5,5	0.44	0
3	H4B	C	502	-	16,18,18	1.03	0	11,26,26	2.60	4 (36%)
5	BTB	C	506	-	13,13,13	0.35	0	7,16,16	0.45	0
5	BTB	A	505	-	13,13,13	0.69	0	7,16,16	1.18	0

Mol	Type	Chain	Res	Link	Bond lengths			Bond angles		
					Counts	RMSZ	# Z  > 2	Counts	RMSZ	# Z  > 2
5	BTB	B	504	9	13,13,13	0.41	0	7,16,16	0.55	0
5	BTB	D	505	-	13,13,13	0.51	0	7,16,16	1.02	1 (14%)
2	HEM	C	501	1	41,50,50	1.62	8 (19%)	45,82,82	1.50	7 (15%)
4	F2J	D	503	-	24,26,26	1.79	6 (25%)	22,36,36	2.71	7 (31%)
4	F2J	B	503	-	24,26,26	1.76	6 (25%)	22,36,36	2.76	7 (31%)
3	H4B	A	502	-	16,18,18	0.91	0	11,26,26	2.56	6 (54%)
3	H4B	D	502	-	16,18,18	1.01	1 (6%)	11,26,26	2.75	5 (45%)
2	HEM	D	501	1	41,50,50	1.63	6 (14%)	45,82,82	1.88	11 (24%)
5	BTB	B	505	-	13,13,13	0.62	0	7,16,16	0.96	1 (14%)

In the following table, the Chirals column lists the number of chiral outliers, the number of chiral centers analysed, the number of these observed in the model and the number defined in the Chemical Component Dictionary. Similar counts are reported in the Torsion and Rings columns. '-' means no outliers of that kind were identified.

Mol	Type	Chain	Res	Link	Chirals	Torsions	Rings
4	F2J	C	503	-	-	0/4/20/20	0/4/4/4
2	HEM	B	501	1	-	3/12/54/54	-
3	H4B	B	502	-	-	3/8/17/17	0/2/2/2
5	BTB	C	505	-	-	14/21/21/21	-
7	GOL	A	507	-	-	4/4/4/4	-
5	BTB	D	504	9	-	4/21/21/21	-
5	BTB	D	506	-	-	0/21/21/21	-
4	F2J	A	503	-	-	0/4/20/20	0/4/4/4
2	HEM	A	501	1	-	6/12/54/54	-
5	BTB	B	506	-	-	5/21/21/21	-
5	BTB	A	504	-	-	16/21/21/21	-
5	BTB	C	504	-	-	11/21/21/21	-
7	GOL	C	508	-	-	4/4/4/4	-
3	H4B	C	502	-	-	0/8/17/17	0/2/2/2
5	BTB	C	506	-	-	3/21/21/21	-
5	BTB	A	505	-	-	3/21/21/21	-
5	BTB	B	504	9	-	4/21/21/21	-
5	BTB	D	505	-	-	12/21/21/21	-
2	HEM	C	501	1	-	4/12/54/54	-
4	F2J	D	503	-	-	0/4/20/20	0/4/4/4
4	F2J	B	503	-	-	0/4/20/20	0/4/4/4

Continued on next page...

Continued from previous page...

Mol	Type	Chain	Res	Link	Chirals	Torsions	Rings
3	H4B	A	502	-	-	0/8/17/17	0/2/2/2
3	H4B	D	502	-	-	3/8/17/17	0/2/2/2
2	HEM	D	501	1	-	2/12/54/54	-
5	BTB	B	505	-	-	5/21/21/21	-

All (52) bond length outliers are listed below:

Mol	Chain	Res	Type	Atoms	Z	Observed(Å)	Ideal(Å)
4	C	503	F2J	C18-N19	5.02	1.46	1.37
4	D	503	F2J	C18-N19	4.90	1.46	1.37
4	B	503	F2J	C18-N19	4.68	1.46	1.37
4	A	503	F2J	C18-N19	4.62	1.46	1.37
2	D	501	HEM	C3C-C2C	-4.22	1.34	1.40
2	A	501	HEM	C3C-C2C	-3.89	1.35	1.40
2	D	501	HEM	C3C-CAC	3.88	1.55	1.47
2	C	501	HEM	C3C-C2C	-3.80	1.35	1.40
2	C	501	HEM	C3C-CAC	3.61	1.55	1.47
2	B	501	HEM	C3C-CAC	3.56	1.55	1.47
2	B	501	HEM	C3C-C2C	-3.52	1.35	1.40
2	C	501	HEM	FE-NB	3.45	2.13	1.96
4	C	503	F2J	C18-C17	3.33	1.55	1.37
2	A	501	HEM	C3C-CAC	3.33	1.54	1.47
4	D	503	F2J	C18-C17	3.27	1.54	1.37
4	B	503	F2J	C18-C17	3.26	1.54	1.37
4	A	503	F2J	C18-C17	3.26	1.54	1.37
2	D	501	HEM	FE-NB	3.23	2.12	1.96
4	D	503	F2J	C06-N07	-3.22	1.32	1.39
2	B	501	HEM	CAB-C3B	3.20	1.56	1.47
4	C	503	F2J	C06-N07	-2.97	1.32	1.39
2	A	501	HEM	FE-ND	2.96	2.11	1.96
2	A	501	HEM	CAB-C3B	2.93	1.55	1.47
2	D	501	HEM	FE-ND	2.90	2.11	1.96
4	A	503	F2J	C11-N07	-2.88	1.35	1.41
4	B	503	F2J	C06-N07	-2.88	1.33	1.39
4	A	503	F2J	C06-N07	-2.86	1.33	1.39
4	C	503	F2J	C11-N07	-2.84	1.35	1.41
4	B	503	F2J	C15-C14	-2.75	1.35	1.41
2	B	501	HEM	FE-NB	2.75	2.10	1.96
2	C	501	HEM	CAB-C3B	2.74	1.54	1.47
4	D	503	F2J	C11-N07	-2.74	1.36	1.41
2	D	501	HEM	CAB-C3B	2.65	1.54	1.47
2	C	501	HEM	FE-ND	2.65	2.10	1.96

Continued on next page...



*Continued from previous page...*

Mol	Chain	Res	Type	Atoms	Z	Observed(Å)	Ideal(Å)
4	D	503	F2J	C15-C14	-2.45	1.36	1.41
2	C	501	HEM	CAA-C2A	2.37	1.55	1.52
4	B	503	F2J	C02-C06	2.34	1.49	1.45
2	B	501	HEM	FE-ND	2.33	2.08	1.96
2	D	501	HEM	CMB-C2B	2.31	1.55	1.50
4	A	503	F2J	C02-C06	2.31	1.48	1.45
2	C	501	HEM	CMD-C2D	2.31	1.55	1.50
2	A	501	HEM	FE-NB	2.29	2.08	1.96
2	A	501	HEM	CMB-C2B	2.28	1.55	1.50
2	B	501	HEM	CMD-C2D	2.27	1.55	1.50
2	C	501	HEM	CMB-C2B	2.27	1.55	1.50
4	B	503	F2J	C11-N07	-2.21	1.37	1.41
4	D	503	F2J	C04-C05	2.20	1.41	1.34
4	C	503	F2J	C15-C14	-2.20	1.36	1.41
3	B	502	H4B	C7-C6	2.16	1.54	1.52
4	A	503	F2J	C15-C14	-2.16	1.36	1.41
3	D	502	H4B	C4-N3	2.09	1.36	1.33
3	B	502	H4B	C4-N3	2.02	1.36	1.33

All (92) bond angle outliers are listed below:

Mol	Chain	Res	Type	Atoms	Z	Observed(°)	Ideal(°)
4	A	503	F2J	C04-C05-S01	-8.61	105.99	112.98
4	D	503	F2J	C04-C05-S01	-8.19	106.33	112.98
4	B	503	F2J	C04-C05-S01	-8.18	106.34	112.98
4	C	503	F2J	C04-C05-S01	-7.38	106.99	112.98
3	D	502	H4B	C8A-C4A-C4	5.85	119.76	114.57
3	A	502	H4B	C8A-C4A-C4	5.73	119.66	114.57
3	C	502	H4B	C8A-C4A-C4	5.64	119.58	114.57
4	D	503	F2J	C13-C14-N19	-5.54	127.39	132.11
4	A	503	F2J	C18-N19-C24	-5.40	120.06	125.40
4	C	503	F2J	C17-C15-C14	5.30	110.73	106.20
4	B	503	F2J	C17-C15-C14	5.03	110.50	106.20
2	D	501	HEM	CBA-CAA-C2A	-5.00	104.08	112.62
4	C	503	F2J	C13-C14-N19	-5.00	127.86	132.11
4	B	503	F2J	C13-C14-N19	-4.91	127.92	132.11
4	A	503	F2J	C17-C15-C14	4.91	110.40	106.20
2	D	501	HEM	CAD-CBD-CGD	-4.89	103.09	113.60
2	B	501	HEM	CBA-CAA-C2A	-4.83	104.37	112.62
3	B	502	H4B	C8A-C4A-C4	4.58	118.64	114.57
4	D	503	F2J	C17-C15-C14	4.58	110.11	106.20
4	A	503	F2J	C13-C14-N19	-4.57	128.22	132.11

*Continued on next page...*

*Continued from previous page...*

Mol	Chain	Res	Type	Atoms	Z	Observed(°)	Ideal(°)
2	B	501	HEM	CBD-CAD-C3D	-4.50	100.13	112.63
2	A	501	HEM	CBD-CAD-C3D	-4.10	101.23	112.63
2	C	501	HEM	C4B-CHC-C1C	3.92	127.73	122.56
4	C	503	F2J	C18-N19-C24	-3.89	121.56	125.40
4	B	503	F2J	C18-N19-C24	-3.75	121.69	125.40
4	A	503	F2J	C26-C25-C24	3.70	113.33	110.44
3	B	502	H4B	N1-C2-N3	-3.63	119.72	125.42
4	B	503	F2J	C22-C23-C24	-3.58	107.64	110.44
2	D	501	HEM	C1B-NB-C4B	3.49	108.68	105.07
3	C	502	H4B	N1-C2-N3	-3.47	119.97	125.42
2	A	501	HEM	C4B-CHC-C1C	3.42	127.08	122.56
2	C	501	HEM	C1B-NB-C4B	3.41	108.59	105.07
4	D	503	F2J	C18-N19-C24	-3.33	122.10	125.40
3	B	502	H4B	C2-N3-C4	3.33	121.21	115.93
2	B	501	HEM	C4B-CHC-C1C	3.31	126.92	122.56
3	D	502	H4B	N1-C2-N3	-3.30	120.24	125.42
3	B	502	H4B	C4-C4A-N5	3.22	121.82	119.12
2	B	501	HEM	C4D-ND-C1D	3.14	108.31	105.07
2	A	501	HEM	C1B-NB-C4B	3.10	108.27	105.07
2	B	501	HEM	C1B-NB-C4B	3.08	108.26	105.07
2	D	501	HEM	C4D-ND-C1D	3.07	108.25	105.07
3	C	502	H4B	C2-N3-C4	3.05	120.78	115.93
2	B	501	HEM	CMC-C2C-C3C	3.05	130.38	124.68
3	D	502	H4B	C2-N1-C8A	3.02	121.31	114.54
3	B	502	H4B	C2-N1-C8A	2.98	121.22	114.54
3	A	502	H4B	C2-N3-C4	2.97	120.64	115.93
3	A	502	H4B	N1-C2-N3	-2.96	120.78	125.42
2	C	501	HEM	CBD-CAD-C3D	-2.95	104.43	112.63
3	C	502	H4B	C2-N1-C8A	2.92	121.08	114.54
2	B	501	HEM	C3B-C2B-C1B	2.86	108.61	106.49
2	D	501	HEM	C3D-C4D-ND	-2.85	107.00	110.17
3	D	502	H4B	C2-N3-C4	2.80	120.38	115.93
3	D	502	H4B	C4-C4A-N5	2.69	121.38	119.12
4	D	503	F2J	C12-C13-C14	-2.67	115.60	119.70
3	A	502	H4B	C2-N1-C8A	2.63	120.44	114.54
2	B	501	HEM	CHC-C4B-C3B	2.62	128.58	124.57
2	C	501	HEM	C4A-C3A-C2A	2.61	108.81	107.00
2	B	501	HEM	C4C-CHD-C1D	2.59	125.98	122.56
2	B	501	HEM	C3D-C4D-ND	-2.57	107.31	110.17
2	C	501	HEM	CHC-C4B-C3B	2.55	128.47	124.57
2	A	501	HEM	C4D-ND-C1D	2.55	107.71	105.07
2	A	501	HEM	CMA-C3A-C4A	-2.54	124.55	128.46

*Continued on next page...*

Continued from previous page...

Mol	Chain	Res	Type	Atoms	Z	Observed(°)	Ideal(°)
4	D	503	F2J	C11-C16-C15	-2.53	116.58	120.29
2	D	501	HEM	CMC-C2C-C3C	2.52	129.39	124.68
2	D	501	HEM	C3B-C2B-C1B	2.48	108.33	106.49
2	B	501	HEM	CMA-C3A-C4A	-2.44	124.72	128.46
2	C	501	HEM	C3B-C2B-C1B	2.38	108.25	106.49
2	D	501	HEM	CHC-C4B-C3B	2.37	128.20	124.57
2	A	501	HEM	C4A-C3A-C2A	2.36	108.64	107.00
2	D	501	HEM	C4B-CHC-C1C	2.35	125.67	122.56
4	A	503	F2J	C11-C16-C15	-2.33	116.87	120.29
4	A	503	F2J	C17-C15-C16	-2.32	128.24	136.62
2	A	501	HEM	C3D-C4D-ND	-2.31	107.60	110.17
5	B	505	BTB	O4-C4-C2	-2.29	105.16	111.44
2	D	501	HEM	C4A-C3A-C2A	2.27	108.57	107.00
4	D	503	F2J	C17-C15-C16	-2.25	128.49	136.62
4	C	503	F2J	C11-C16-C15	-2.24	117.00	120.29
2	A	501	HEM	O1D-CGD-CBD	-2.24	115.88	123.08
4	B	503	F2J	C17-C15-C16	-2.22	128.59	136.62
4	C	503	F2J	C17-C15-C16	-2.21	128.64	136.62
2	A	501	HEM	C3B-C2B-C1B	2.19	108.11	106.49
4	B	503	F2J	C12-C13-C14	-2.15	116.39	119.70
2	D	501	HEM	C2B-C1B-NB	-2.14	107.30	109.84
4	A	503	F2J	C12-C13-C14	-2.13	116.43	119.70
2	A	501	HEM	CMB-C2B-C1B	2.12	128.26	125.04
2	C	501	HEM	C4D-ND-C1D	2.10	107.25	105.07
3	A	502	H4B	N2-C2-N3	2.10	120.52	117.25
2	A	501	HEM	CMC-C2C-C3C	2.10	128.61	124.68
5	D	505	BTB	O1-C1-C2	-2.07	105.78	111.44
2	A	501	HEM	C2C-C3C-C4C	2.07	108.34	106.90
2	B	501	HEM	CHD-C1D-ND	2.06	126.67	124.43
3	A	502	H4B	C4-C4A-N5	2.03	120.82	119.12

There are no chirality outliers.

All (106) torsion outliers are listed below:

Mol	Chain	Res	Type	Atoms
2	A	501	HEM	C1A-C2A-CAA-CBA
2	A	501	HEM	C3A-C2A-CAA-CBA
2	C	501	HEM	C1A-C2A-CAA-CBA
2	C	501	HEM	C3A-C2A-CAA-CBA
2	C	501	HEM	C2A-CAA-CBA-CGA
3	D	502	H4B	C7-C6-C9-O9
3	D	502	H4B	C7-C6-C9-C10

Continued on next page...

*Continued from previous page...*

Mol	Chain	Res	Type	Atoms
5	A	504	BTB	O1-C1-C2-C3
5	A	504	BTB	O1-C1-C2-C4
5	A	504	BTB	O1-C1-C2-N
5	A	504	BTB	C1-C2-C3-O3
5	A	504	BTB	C4-C2-C3-O3
5	A	504	BTB	N-C2-C3-O3
5	A	504	BTB	C1-C2-C4-O4
5	A	504	BTB	C3-C2-C4-O4
5	A	504	BTB	N-C2-C4-O4
5	A	504	BTB	C1-C2-N-C5
5	A	504	BTB	C3-C2-N-C5
5	A	504	BTB	C3-C2-N-C7
5	A	504	BTB	C4-C2-N-C5
5	A	504	BTB	C6-C5-N-C7
5	A	504	BTB	N-C7-C8-O8
5	A	505	BTB	O1-C1-C2-N
5	B	504	BTB	O1-C1-C2-C3
5	B	505	BTB	O1-C1-C2-C3
5	B	505	BTB	O1-C1-C2-C4
5	B	505	BTB	O1-C1-C2-N
5	B	506	BTB	O1-C1-C2-C3
5	B	506	BTB	O1-C1-C2-C4
5	B	506	BTB	O1-C1-C2-N
5	B	506	BTB	C6-C5-N-C7
5	C	504	BTB	O1-C1-C2-C3
5	C	504	BTB	O1-C1-C2-C4
5	C	504	BTB	O1-C1-C2-N
5	C	504	BTB	C1-C2-N-C5
5	C	504	BTB	C1-C2-N-C7
5	C	504	BTB	C3-C2-N-C7
5	C	504	BTB	C4-C2-N-C7
5	C	505	BTB	C1-C2-C3-O3
5	C	505	BTB	C4-C2-C3-O3
5	C	505	BTB	N-C2-C3-O3
5	C	505	BTB	C1-C2-C4-O4
5	C	505	BTB	C3-C2-C4-O4
5	C	505	BTB	N-C2-C4-O4
5	C	505	BTB	C1-C2-N-C5
5	C	505	BTB	C1-C2-N-C7
5	C	505	BTB	C3-C2-N-C5
5	C	505	BTB	C3-C2-N-C7
5	C	505	BTB	C4-C2-N-C5

*Continued on next page...*

*Continued from previous page...*

Mol	Chain	Res	Type	Atoms
5	C	505	BTB	C4-C2-N-C7
5	C	505	BTB	C8-C7-N-C5
5	C	505	BTB	N-C5-C6-O6
5	C	506	BTB	C1-C2-C3-O3
5	D	504	BTB	O1-C1-C2-C3
5	D	504	BTB	O1-C1-C2-C4
5	D	504	BTB	O1-C1-C2-N
5	D	505	BTB	C3-C2-C4-O4
5	D	505	BTB	N-C2-C4-O4
5	D	505	BTB	C8-C7-N-C5
7	A	507	GOL	O1-C1-C2-C3
7	C	508	GOL	O1-C1-C2-C3
7	C	508	GOL	C1-C2-C3-O3
2	A	501	HEM	C2A-CAA-CBA-CGA
7	A	507	GOL	O1-C1-C2-O2
7	A	507	GOL	C1-C2-C3-O3
5	D	505	BTB	N-C5-C6-O6
7	C	508	GOL	O2-C2-C3-O3
5	D	505	BTB	N-C7-C8-O8
5	C	504	BTB	C8-C7-N-C5
5	C	506	BTB	C8-C7-N-C5
3	B	502	H4B	C7-C6-C9-O9
5	B	506	BTB	N-C5-C6-O6
2	D	501	HEM	C2A-CAA-CBA-CGA
5	B	504	BTB	N-C5-C6-O6
5	D	504	BTB	N-C5-C6-O6
7	A	507	GOL	O2-C2-C3-O3
7	C	508	GOL	O1-C1-C2-O2
3	B	502	H4B	C7-C6-C9-C10
5	C	504	BTB	N-C7-C8-O8
2	A	501	HEM	C4B-C3B-CAB-CBB
2	B	501	HEM	C4B-C3B-CAB-CBB
2	C	501	HEM	C4B-C3B-CAB-CBB
2	D	501	HEM	C4B-C3B-CAB-CBB
5	A	505	BTB	O1-C1-C2-C3
5	A	505	BTB	O1-C1-C2-C4
5	D	505	BTB	C1-C2-C4-O4
5	A	504	BTB	C1-C2-N-C7
5	B	504	BTB	O1-C1-C2-N
5	C	504	BTB	C3-C2-N-C5
5	D	505	BTB	O1-C1-C2-N
5	D	505	BTB	C1-C2-N-C7

*Continued on next page...*

*Continued from previous page...*

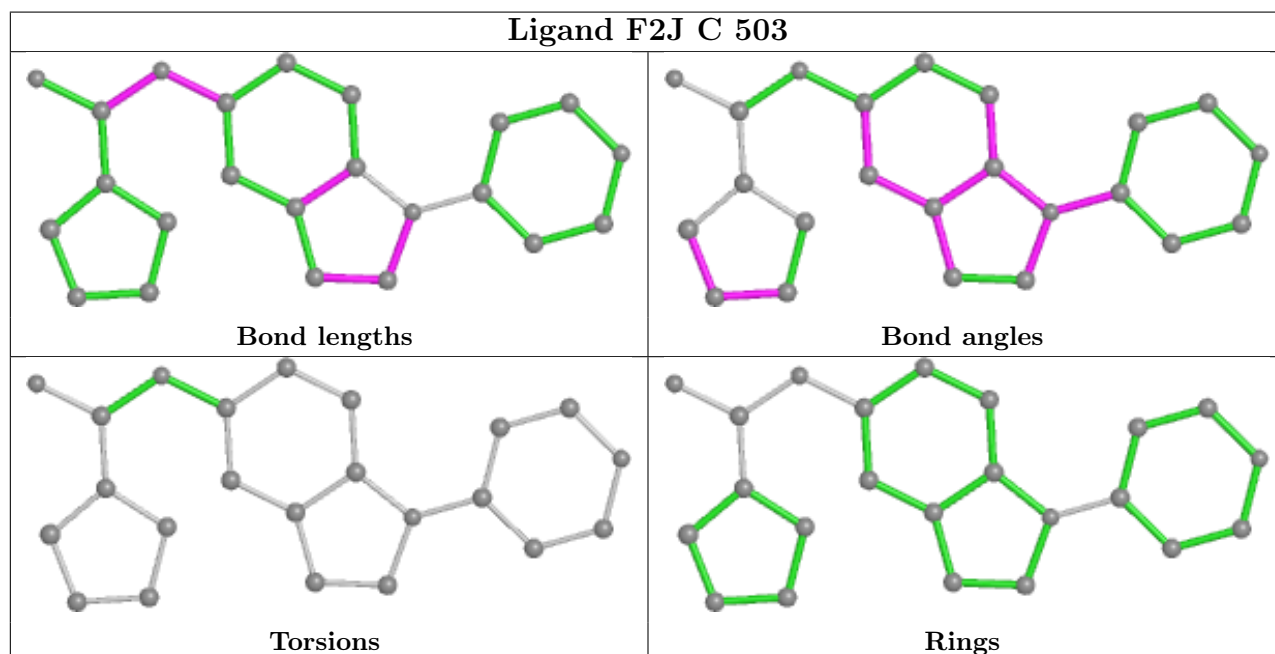
Mol	Chain	Res	Type	Atoms
5	D	505	BTB	C3-C2-N-C5
5	D	505	BTB	C3-C2-N-C7
5	D	505	BTB	C4-C2-N-C5
5	C	506	BTB	N-C7-C8-O8
5	C	504	BTB	N-C5-C6-O6
5	B	505	BTB	N-C7-C8-O8
2	B	501	HEM	CAA-CBA-CGA-O2A
2	B	501	HEM	CAA-CBA-CGA-O1A
2	A	501	HEM	CAD-CBD-CGD-O2D
3	B	502	H4B	N5-C6-C9-O9
3	D	502	H4B	N5-C6-C9-O9
5	B	504	BTB	O1-C1-C2-C4
5	B	505	BTB	C1-C2-C3-O3
5	D	505	BTB	O1-C1-C2-C4
2	A	501	HEM	CAD-CBD-CGD-O1D

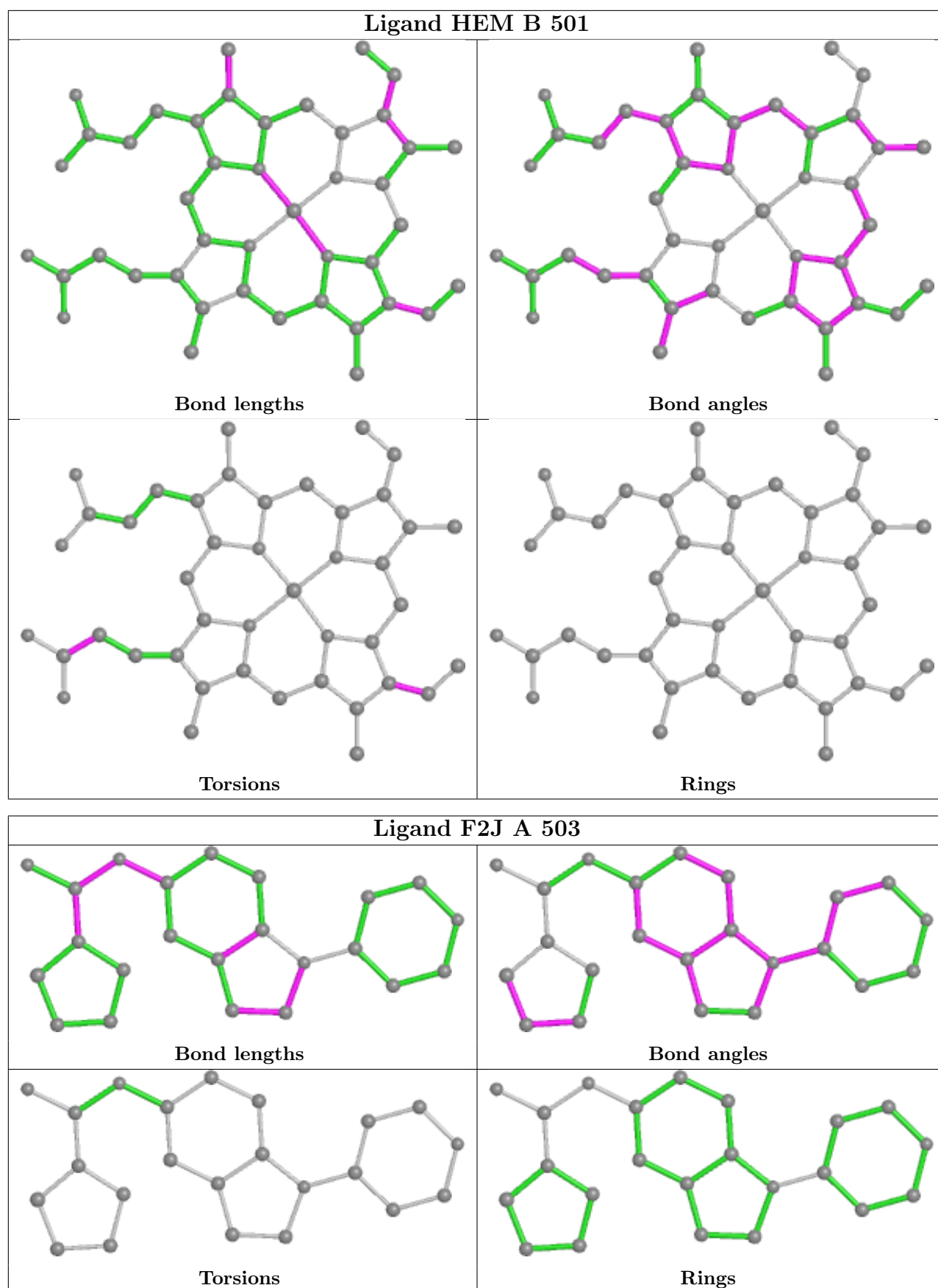
There are no ring outliers.

21 monomers are involved in 52 short contacts:

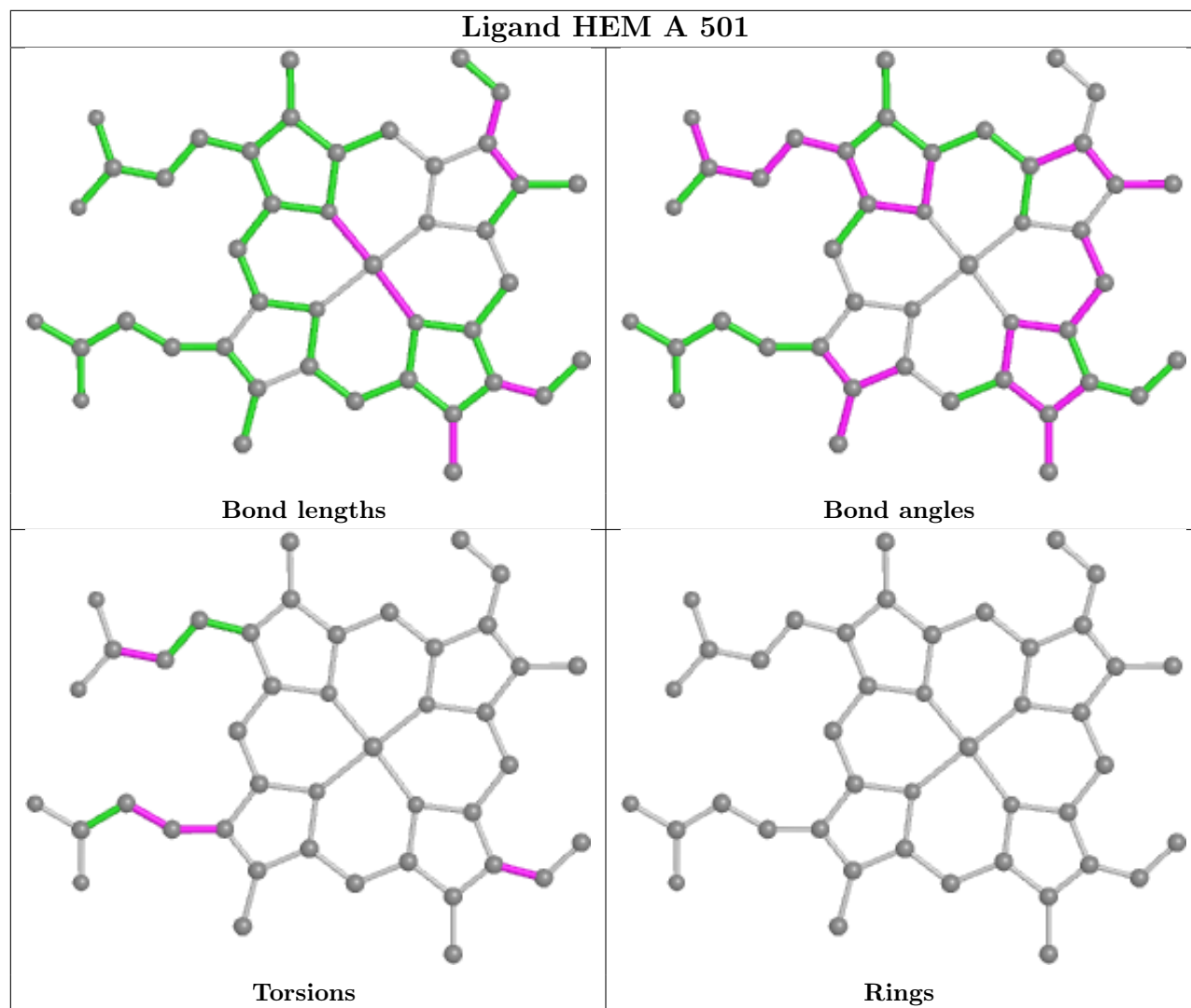
Mol	Chain	Res	Type	Clashes	Symm-Clashes
2	B	501	HEM	2	0
3	B	502	H4B	1	0
5	C	505	BTB	3	0
5	D	504	BTB	2	0
5	D	506	BTB	5	0
4	A	503	F2J	1	0
2	A	501	HEM	1	0
5	B	506	BTB	4	0
5	A	504	BTB	3	0
5	C	504	BTB	2	0
3	C	502	H4B	1	0
5	C	506	BTB	5	0
5	A	505	BTB	1	0
5	B	504	BTB	3	0
5	D	505	BTB	3	0
2	C	501	HEM	3	0
4	D	503	F2J	1	0
3	A	502	H4B	1	0
3	D	502	H4B	1	0
2	D	501	HEM	2	0
5	B	505	BTB	6	1

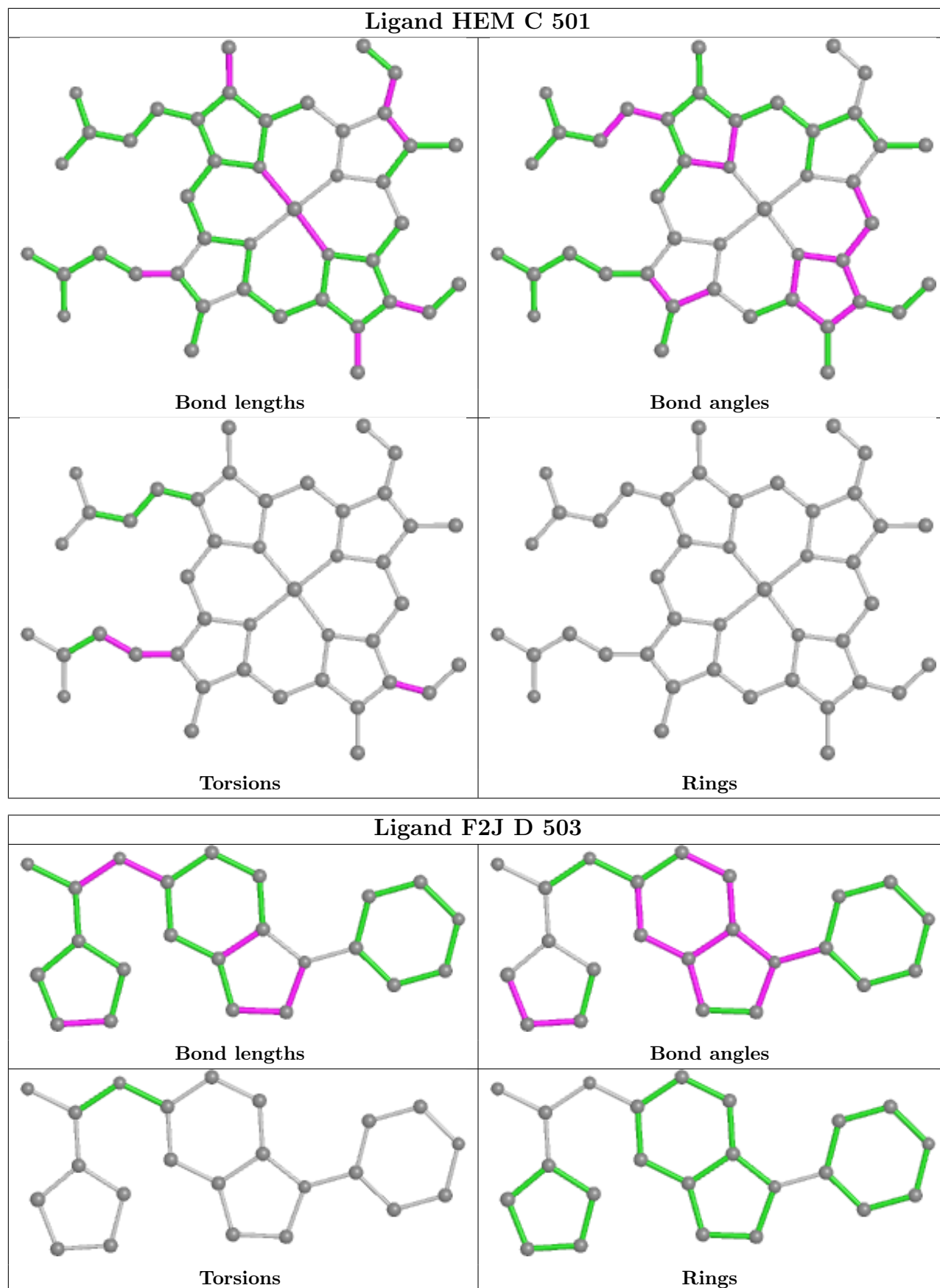
The following is a two-dimensional graphical depiction of Mogul quality analysis of bond lengths, bond angles, torsion angles, and ring geometry for all instances of the Ligand of Interest. In addition, ligands with molecular weight > 250 and outliers as shown on the validation Tables will also be included. For torsion angles, if less than 5% of the Mogul distribution of torsion angles is within 10 degrees of the torsion angle in question, then that torsion angle is considered an outlier. Any bond that is central to one or more torsion angles identified as an outlier by Mogul will be highlighted in the graph. For rings, the root-mean-square deviation (RMSD) between the ring in question and similar rings identified by Mogul is calculated over all ring torsion angles. If the average RMSD is greater than 60 degrees and the minimal RMSD between the ring in question and any Mogul-identified rings is also greater than 60 degrees, then that ring is considered an outlier. The outliers are highlighted in purple. The color gray indicates Mogul did not find sufficient equivalents in the CSD to analyse the geometry.

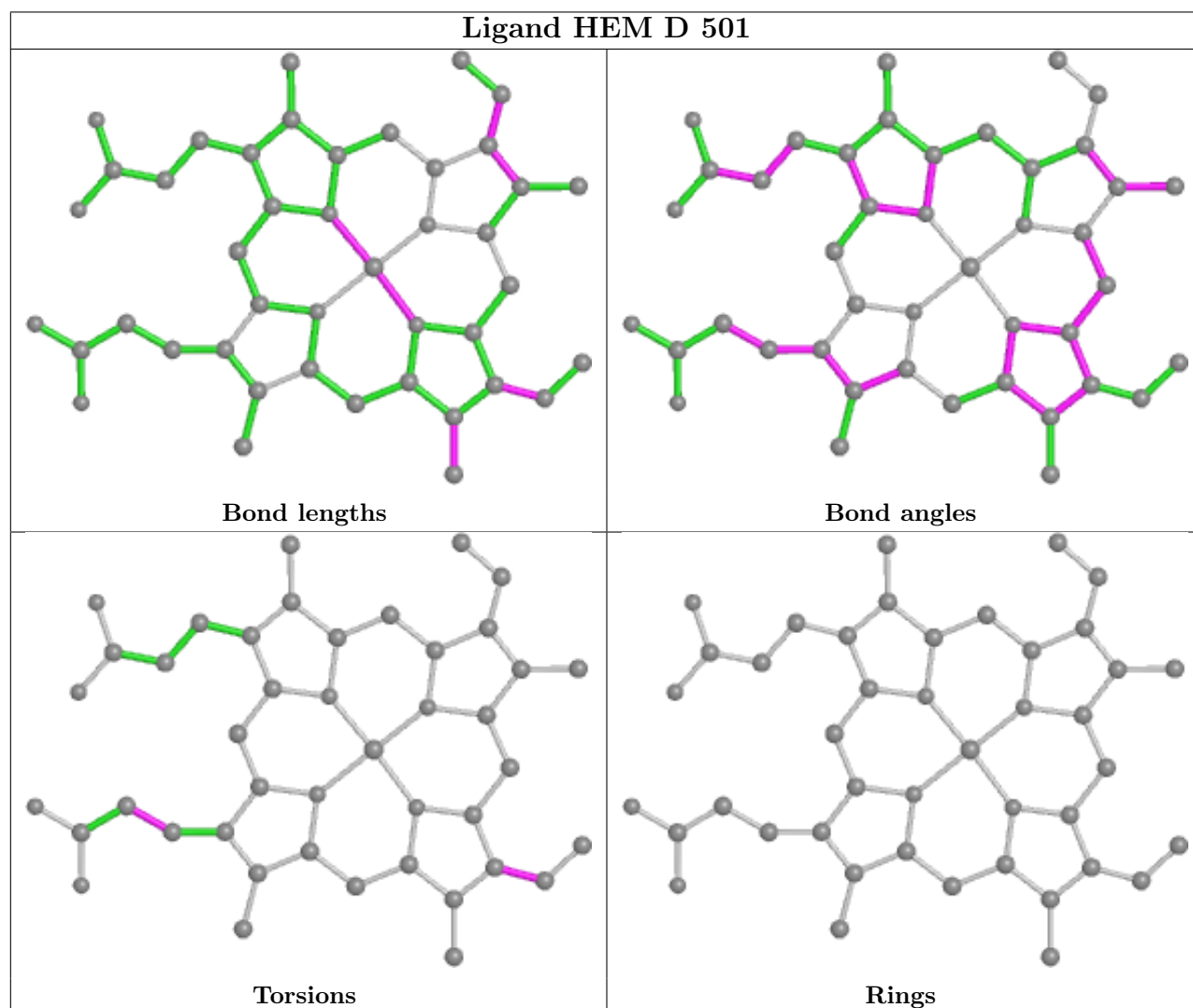
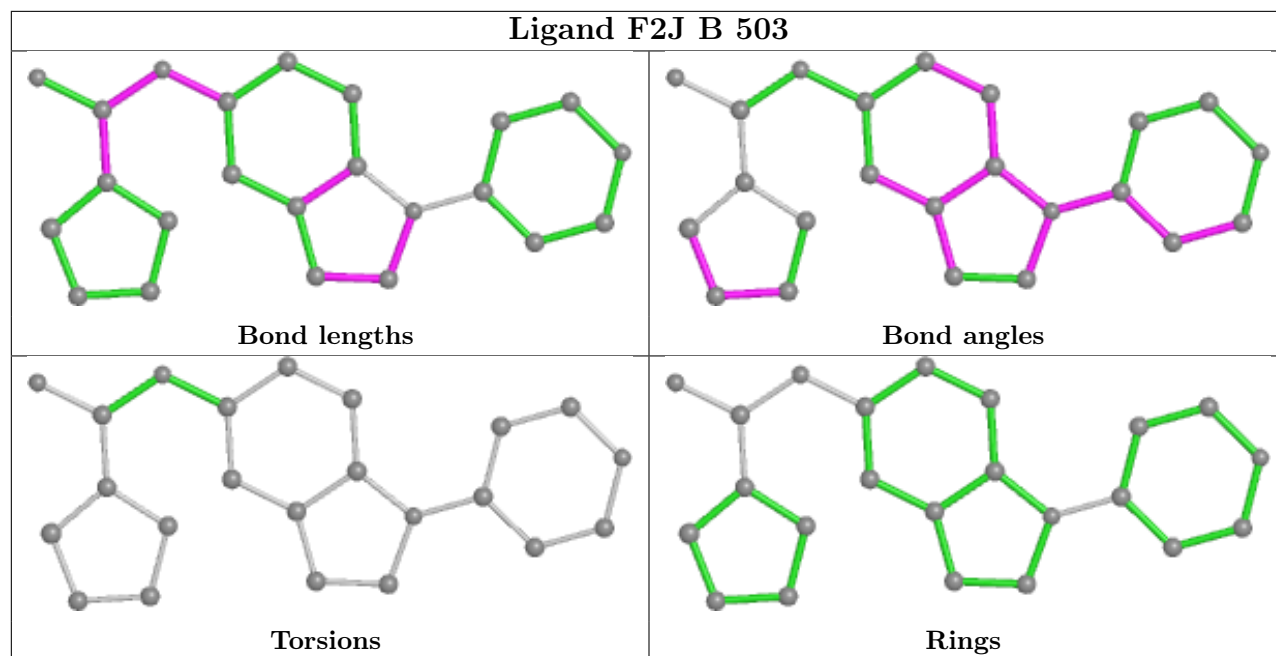












## 5.7 Other polymers [i](#)

There are no such residues in this entry.

## 5.8 Polymer linkage issues [i](#)

There are no chain breaks in this entry.

## 6 Fit of model and data

### 6.1 Protein, DNA and RNA chains

In the following table, the column labelled ‘#RSRZ > 2’ contains the number (and percentage) of RSRZ outliers, followed by percent RSRZ outliers for the chain as percentile scores relative to all X-ray entries and entries of similar resolution. The OWAB column contains the minimum, median, 95<sup>th</sup> percentile and maximum values of the occupancy-weighted average B-factor per residue. The column labelled ‘Q < 0.9’ lists the number of (and percentage) of residues with an average occupancy less than 0.9.

Mol	Chain	Analysed	<RSRZ>	#RSRZ>2	OWAB(Å <sup>2</sup> )	Q<0.9
1	A	404/440 (91%)	0.01	16 (3%) 38 36	23, 47, 96, 121	0
1	B	403/440 (91%)	-0.19	2 (0%) 91 90	21, 35, 64, 105	0
1	C	401/440 (91%)	0.14	11 (2%) 54 52	25, 50, 96, 113	0
1	D	404/440 (91%)	-0.16	0 100 100	21, 36, 71, 102	0
All	All	1612/1760 (91%)	-0.05	29 (1%) 68 66	21, 41, 87, 121	0

All (29) RSRZ outliers are listed below:

Mol	Chain	Res	Type	RSRZ
1	C	153	VAL	5.5
1	A	119	ALA	4.5
1	A	257	GLN	4.4
1	A	160	THR	3.3
1	A	202	ARG	3.2
1	A	107	ARG	3.1
1	C	343	ILE	2.9
1	B	119	ALA	2.9
1	C	238	ARG	2.9
1	A	109	LEU	2.8
1	A	145	ALA	2.8
1	C	239	GLY	2.8
1	A	259	GLY	2.7
1	C	144	GLN	2.7
1	B	89	GLN	2.6
1	A	120	PRO	2.5
1	A	106	PRO	2.5
1	C	89	GLN	2.5
1	A	480	TRP	2.4
1	C	237	GLY	2.4
1	C	130	PHE	2.4

*Continued on next page...*

*Continued from previous page...*

Mol	Chain	Res	Type	RSRZ
1	A	90	GLN	2.3
1	A	153	VAL	2.2
1	C	268	VAL	2.2
1	C	204	ALA	2.2
1	C	142	GLY	2.2
1	A	139	LYS	2.1
1	A	155	ALA	2.1
1	A	140	ARG	2.0

## 6.2 Non-standard residues in protein, DNA, RNA chains [i](#)

There are no non-standard protein/DNA/RNA residues in this entry.

## 6.3 Carbohydrates [i](#)

There are no monosaccharides in this entry.

## 6.4 Ligands [i](#)

In the following table, the Atoms column lists the number of modelled atoms in the group and the number defined in the chemical component dictionary. The B-factors column lists the minimum, median, 95<sup>th</sup> percentile and maximum values of B factors of atoms in the group. The column labelled 'Q< 0.9' lists the number of atoms with occupancy less than 0.9.

Mol	Type	Chain	Res	Atoms	RSCC	RSR	B-factors(Å <sup>2</sup> )	Q<0.9
5	BTB	A	504	14/14	0.75	0.22	58,83,94,94	0
5	BTB	C	504	14/14	0.79	0.19	99,107,114,119	0
5	BTB	B	506	14/14	0.80	0.18	57,83,90,92	0
5	BTB	B	504	14/14	0.83	0.20	34,65,78,81	0
5	BTB	D	506	14/14	0.83	0.17	77,90,99,99	0
5	BTB	C	506	14/14	0.85	0.14	77,87,98,100	0
3	H4B	A	502	17/17	0.85	0.27	41,62,75,82	0
3	H4B	C	502	17/17	0.87	0.22	50,65,88,95	0
5	BTB	B	505	14/14	0.87	0.19	51,72,94,96	0
3	H4B	D	502	17/17	0.88	0.20	28,54,72,77	0
3	H4B	B	502	17/17	0.89	0.17	29,53,62,65	0
5	BTB	C	505	14/14	0.89	0.14	56,67,76,77	0
7	GOL	A	507	6/6	0.89	0.16	57,77,80,84	0
5	BTB	D	504	14/14	0.90	0.14	42,60,72,74	0
5	BTB	D	505	14/14	0.90	0.18	58,73,87,88	0

*Continued on next page...*

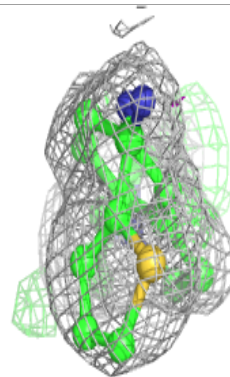
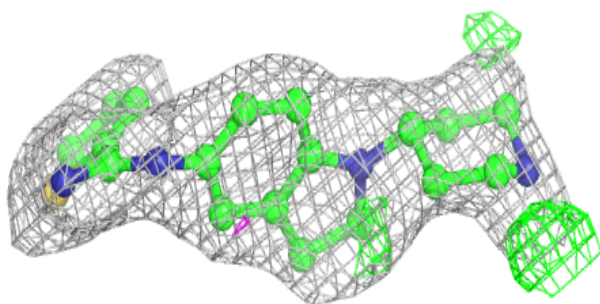
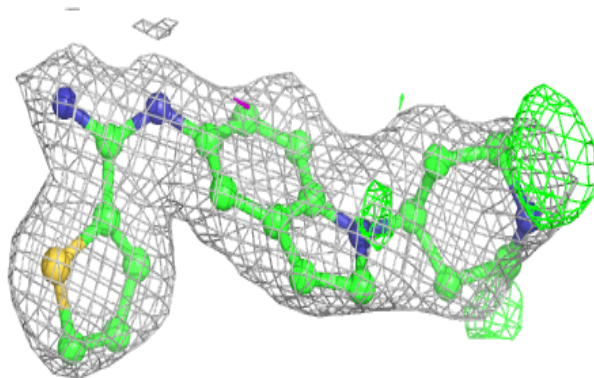
*Continued from previous page...*

Mol	Type	Chain	Res	Atoms	RSCC	RSR	B-factors( $\text{\AA}^2$ )	Q<0.9
4	F2J	A	503	23/23	0.93	0.13	27,48,72,75	0
5	BTB	A	505	14/14	0.93	0.18	26,55,69,69	0
4	F2J	C	503	23/23	0.93	0.15	32,53,77,78	0
4	F2J	B	503	23/23	0.95	0.13	19,41,61,67	0
4	F2J	D	503	23/23	0.95	0.14	19,42,76,78	0
7	GOL	C	508	6/6	0.95	0.12	47,66,85,88	0
2	HEM	C	501	43/43	0.96	0.15	26,42,70,73	0
2	HEM	A	501	43/43	0.97	0.14	27,37,78,84	0
2	HEM	D	501	43/43	0.98	0.14	18,27,69,79	0
2	HEM	B	501	43/43	0.98	0.13	19,23,55,69	0
8	CL	A	508	1/1	0.98	0.06	49,49,49,49	0
9	GD	B	508	1/1	0.98	0.17	48,48,48,48	0
8	CL	C	509	1/1	0.99	0.07	58,58,58,58	0
8	CL	D	508	1/1	0.99	0.10	34,34,34,34	0
8	CL	B	507	1/1	0.99	0.07	37,37,37,37	0
9	GD	C	510	1/1	0.99	0.11	61,61,61,61	1
9	GD	D	507	1/1	0.99	0.16	43,43,43,43	0
6	ZN	A	506	1/1	1.00	0.13	34,34,34,34	0
6	ZN	C	507	1/1	1.00	0.12	37,37,37,37	0
9	GD	A	509	1/1	1.00	0.12	60,60,60,60	1

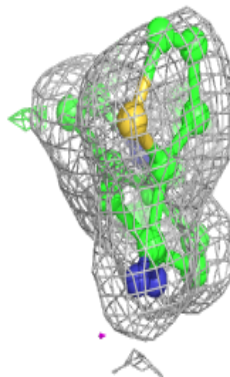
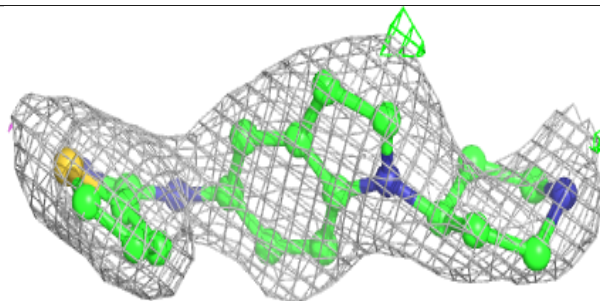
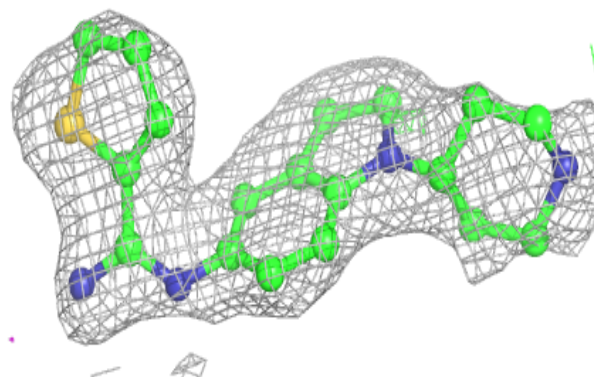
The following is a graphical depiction of the model fit to experimental electron density of all instances of the Ligand of Interest. In addition, ligands with molecular weight > 250 and outliers as shown on the geometry validation Tables will also be included. Each fit is shown from different orientation to approximate a three-dimensional view.

**Electron density around F2J A 503:**

$2mF_o-DF_c$  (at 0.7 rmsd) in gray  
 $mF_o-DF_c$  (at 3 rmsd) in purple (negative)  
and green (positive)

**Electron density around F2J C 503:**

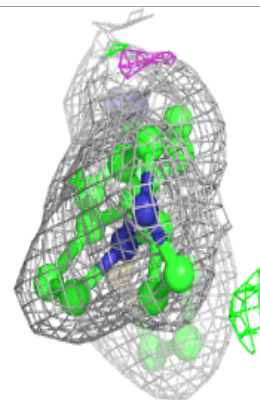
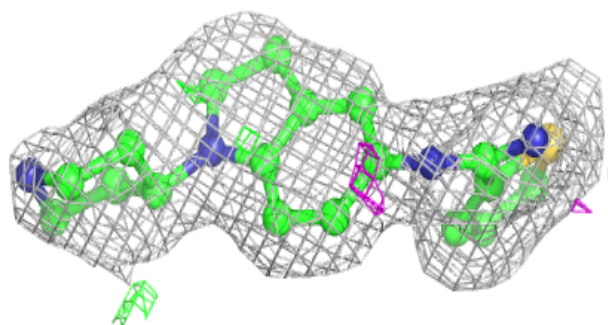
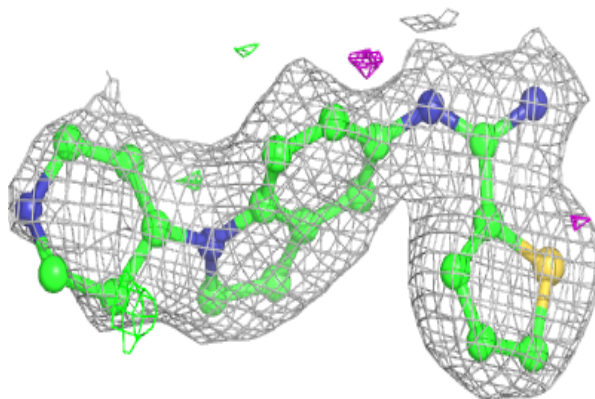
$2mF_o-DF_c$  (at 0.7 rmsd) in gray  
 $mF_o-DF_c$  (at 3 rmsd) in purple (negative)  
and green (positive)



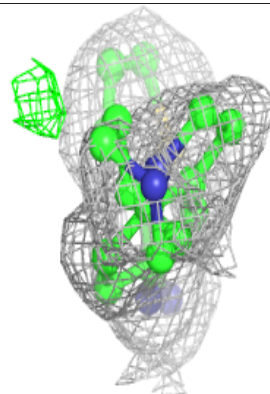
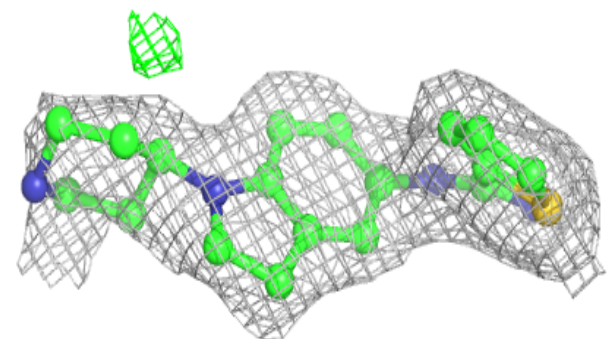
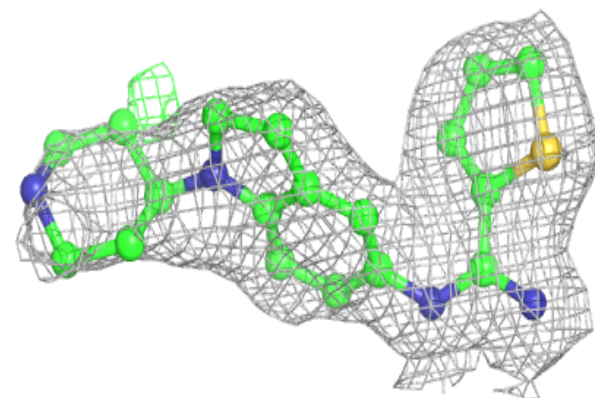


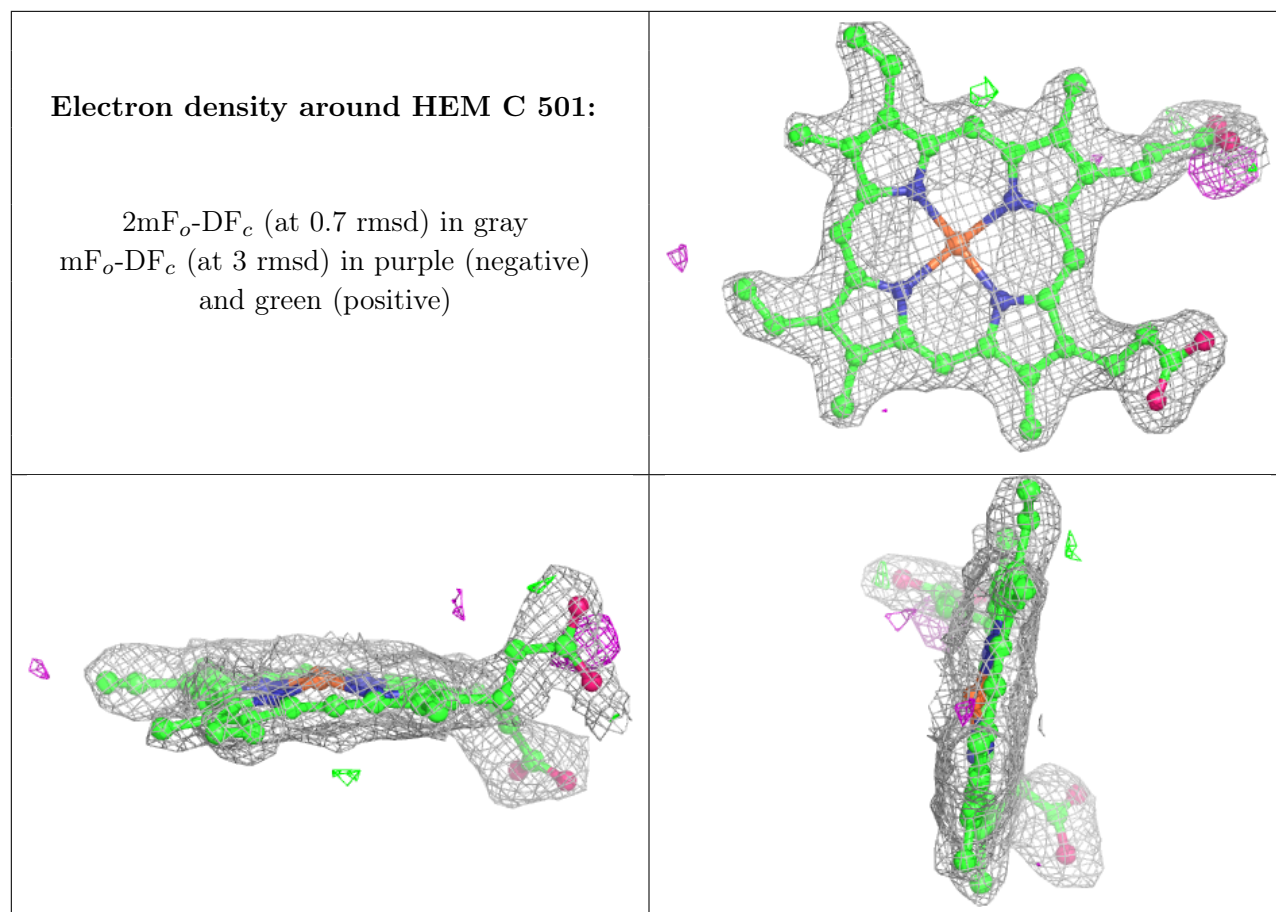
**Electron density around F2J B 503:**

$2mF_o-DF_c$  (at 0.7 rmsd) in gray  
 $mF_o-DF_c$  (at 3 rmsd) in purple (negative)  
and green (positive)

**Electron density around F2J D 503:**

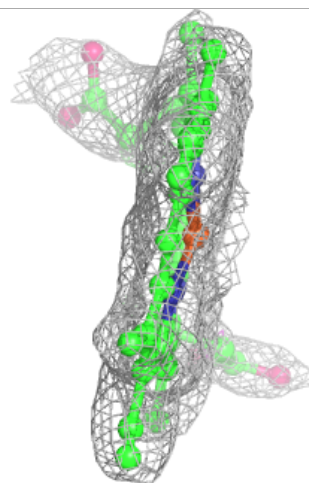
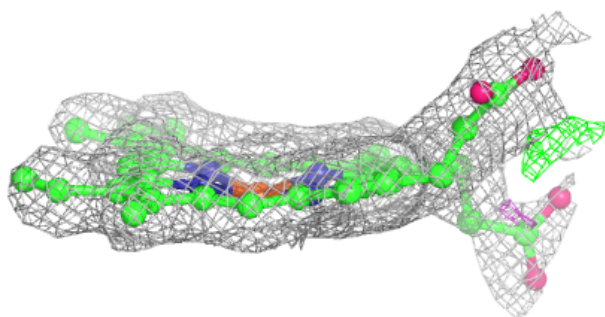
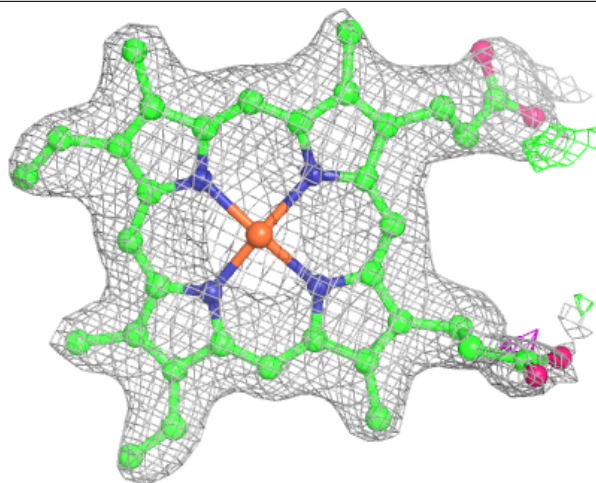
$2mF_o-DF_c$  (at 0.7 rmsd) in gray  
 $mF_o-DF_c$  (at 3 rmsd) in purple (negative)  
and green (positive)





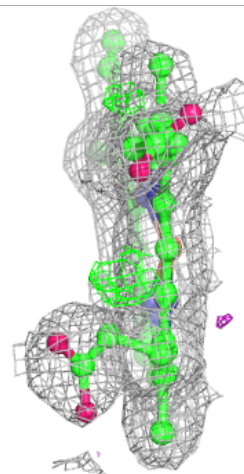
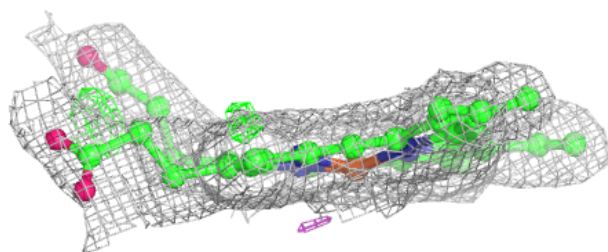
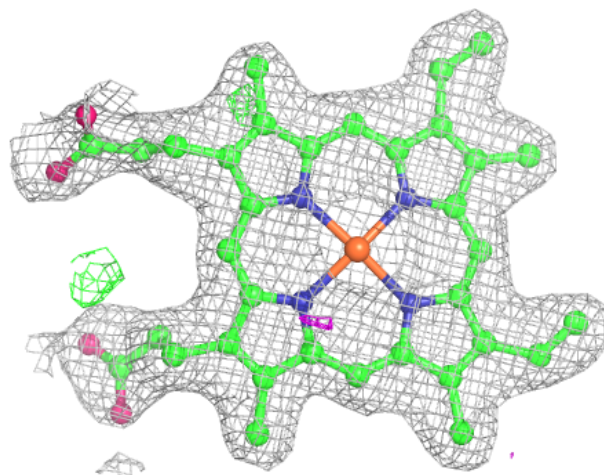
**Electron density around HEM A 501:**

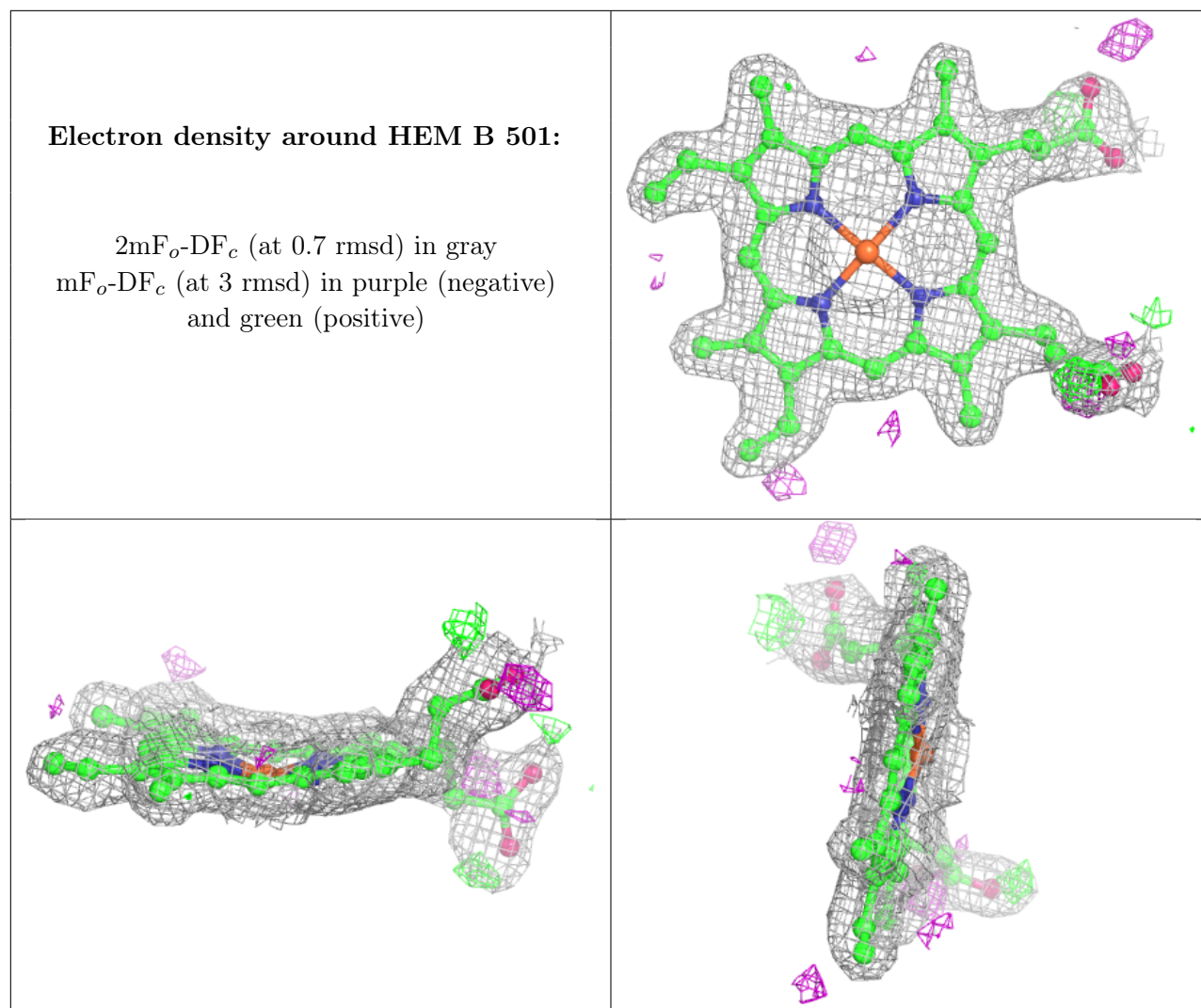
$2mF_o-DF_c$  (at 0.7 rmsd) in gray  
 $mF_o-DF_c$  (at 3 rmsd) in purple (negative)  
and green (positive)



**Electron density around HEM D 501:**

$2mF_o-DF_c$  (at 0.7 rmsd) in gray  
 $mF_o-DF_c$  (at 3 rmsd) in purple (negative)  
and green (positive)





## 6.5 Other polymers [i](#)

There are no such residues in this entry.