



# Full wwPDB X-ray Structure Validation Report ⓘ

May 18, 2020 – 01:07 am BST

PDB ID : 5YXB  
Title : A ligand binding to FXR  
Authors : Yi, L.; Yong, L.  
Deposited on : 2017-12-04  
Resolution : 2.95 Å(reported)

This is a Full wwPDB X-ray Structure Validation Report for a publicly released PDB entry.

We welcome your comments at [validation@mail.wwpdb.org](mailto:validation@mail.wwpdb.org)

A user guide is available at

<https://www.wwpdb.org/validation/2017/XrayValidationReportHelp>

with specific help available everywhere you see the ⓘ symbol.

---

The following versions of software and data (see [references ⓘ](#)) were used in the production of this report:

MolProbity : 4.02b-467  
Mogul : 1.8.5 (274361), CSD as541be (2020)  
Xtriage (Phenix) : 1.13  
EDS : 2.11  
buster-report : 1.1.7 (2018)  
Percentile statistics : 20191225.v01 (using entries in the PDB archive December 25th 2019)  
Refmac : 5.8.0158  
CCP4 : 7.0.044 (Gargrove)  
Ideal geometry (proteins) : Engh & Huber (2001)  
Ideal geometry (DNA, RNA) : Parkinson et al. (1996)  
Validation Pipeline (wwPDB-VP) : 2.11

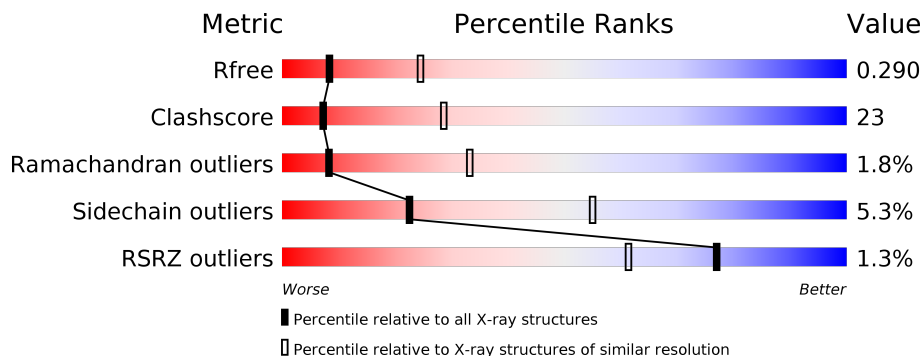
# 1 Overall quality at a glance

The following experimental techniques were used to determine the structure:

*X-RAY DIFFRACTION*

The reported resolution of this entry is 2.95 Å.

Percentile scores (ranging between 0-100) for global validation metrics of the entry are shown in the following graphic. The table shows the number of entries on which the scores are based.



Metric	Whole archive (#Entries)	Similar resolution (#Entries, resolution range(Å))
$R_{free}$	130704	3104 (3.00-2.92)
Clashscore	141614	3462 (3.00-2.92)
Ramachandran outliers	138981	3340 (3.00-2.92)
Sidechain outliers	138945	3343 (3.00-2.92)
RSRZ outliers	127900	2986 (3.00-2.92)

The table below summarises the geometric issues observed across the polymeric chains and their fit to the electron density. The red, orange, yellow and green segments on the lower bar indicate the fraction of residues that contain outliers for  $\geq 3$ , 2, 1 and 0 types of geometric quality criteria respectively. A grey segment represents the fraction of residues that are not modelled. The numeric value for each fraction is indicated below the corresponding segment, with a dot representing fractions  $\leq 5\%$ . The upper red bar (where present) indicates the fraction of residues that have poor fit to the electron density. The numeric value is given above the bar.

Mol	Chain	Length	Quality of chain
1	A	229	
2	B	11	

The following table lists non-polymeric compounds, carbohydrate monomers and non-standard residues in protein, DNA, RNA chains that are outliers for geometric or electron-density-fit criteria:

Mol	Type	Chain	Res	Chirality	Geometry	Clashes	Electron density
3	93O	A	501	-	X	-	-

## 2 Entry composition [i](#)

There are 4 unique types of molecules in this entry. The entry contains 1967 atoms, of which 0 are hydrogens and 0 are deuteriums.

In the tables below, the ZeroOcc column contains the number of atoms modelled with zero occupancy, the AltConf column contains the number of residues with at least one atom in alternate conformation and the Trace column contains the number of residues modelled with at most 2 atoms.

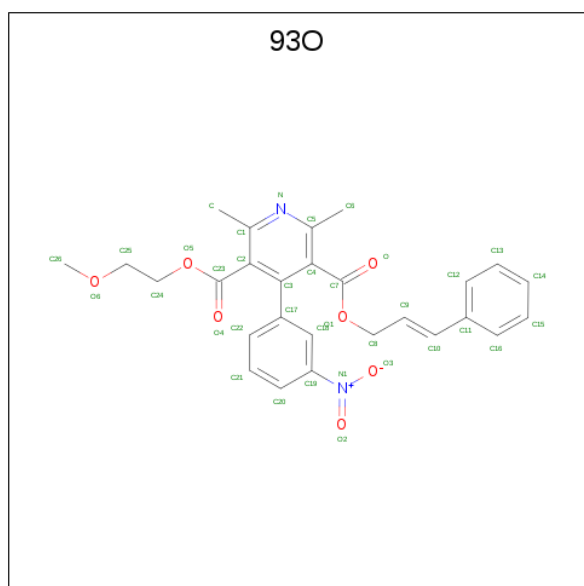
- Molecule 1 is a protein called Bile acid receptor.

Mol	Chain	Residues	Atoms					ZeroOcc	AltConf	Trace
			Total	C	N	O	S			
1	A	223	1796	1150	303	333	10	0	0	0

- Molecule 2 is a protein called Peptide from Nuclear receptor coactivator 2.

Mol	Chain	Residues	Atoms				ZeroOcc	AltConf	Trace
			Total	C	N	O			
2	B	11	83	52	15	16	0	0	0

- Molecule 3 is 2-methoxyethyl (2E)-3-phenylprop-2-en-1-yl 2,6-dimethyl-4-(3-nitrophenyl)pyridine-3,5-dicarboxylate (three-letter code: 93O) (formula: C<sub>27</sub>H<sub>26</sub>N<sub>2</sub>O<sub>7</sub>).



Mol	Chain	Residues	Atoms				ZeroOcc	AltConf
			Total	C	N	O		
3	A	1	36	27	2	7	0	0

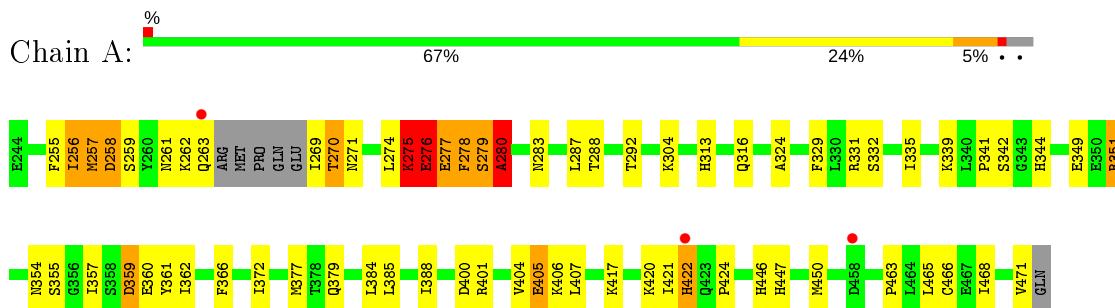
- Molecule 4 is water.

<b>Mol</b>	<b>Chain</b>	<b>Residues</b>	<b>Atoms</b>		<b>ZeroOcc</b>	<b>AltConf</b>
4	A	51	Total 51	O 51	0	0
4	B	1	Total 1	O 1	0	0

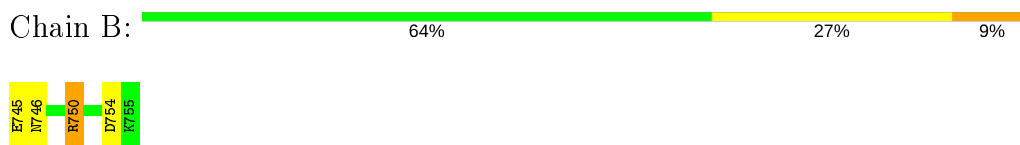
### 3 Residue-property plots [i](#)

These plots are drawn for all protein, RNA and DNA chains in the entry. The first graphic for a chain summarises the proportions of the various outlier classes displayed in the second graphic. The second graphic shows the sequence view annotated by issues in geometry and electron density. Residues are color-coded according to the number of geometric quality criteria for which they contain at least one outlier: green = 0, yellow = 1, orange = 2 and red = 3 or more. A red dot above a residue indicates a poor fit to the electron density ( $RSRZ > 2$ ). Stretches of 2 or more consecutive residues without any outlier are shown as a green connector. Residues present in the sample, but not in the model, are shown in grey.

- Molecule 1: Bile acid receptor



- Molecule 2: Peptide from Nuclear receptor coactivator 2



## 4 Data and refinement statistics

Property	Value	Source
Space group	P 42 2 2	Depositor
Cell constants a, b, c, $\alpha$ , $\beta$ , $\gamma$	86.40Å 86.40Å 75.11Å 90.00° 90.00° 90.00°	Depositor
Resolution (Å)	86.40 – 2.95 38.64 – 2.95	Depositor EDS
% Data completeness (in resolution range)	99.1 (86.40-2.95) 99.2 (38.64-2.95)	Depositor EDS
$R_{merge}$	(Not available)	Depositor
$R_{sym}$	(Not available)	Depositor
$\langle I/\sigma(I) \rangle$ <sup>1</sup>	5.09 (at 2.95Å)	Xtrriage
Refinement program	REFMAC 5.8.0189	Depositor
R, $R_{free}$	0.246 , 0.282 0.246 , 0.290	Depositor DCC
$R_{free}$ test set	349 reflections (5.50%)	wwPDB-VP
Wilson B-factor (Å <sup>2</sup> )	39.2	Xtrriage
Anisotropy	0.076	Xtrriage
Bulk solvent $k_{sol}$ (e/Å <sup>3</sup> ), $B_{sol}$ (Å <sup>2</sup> )	0.30 , 45.1	EDS
L-test for twinning <sup>2</sup>	$\langle  L  \rangle = 0.50$ , $\langle L^2 \rangle = 0.33$	Xtrriage
Estimated twinning fraction	No twinning to report.	Xtrriage
$F_o, F_c$ correlation	0.87	EDS
Total number of atoms	1967	wwPDB-VP
Average B, all atoms (Å <sup>2</sup> )	35.0	wwPDB-VP

Xtrriage's analysis on translational NCS is as follows: *The largest off-origin peak in the Patterson function is 4.80% of the height of the origin peak. No significant pseudotranslation is detected.*

<sup>1</sup> Intensities estimated from amplitudes.

<sup>2</sup> Theoretical values of  $\langle |L| \rangle$ ,  $\langle L^2 \rangle$  for acentric reflections are 0.5, 0.333 respectively for untwinned datasets, and 0.375, 0.2 for perfectly twinned datasets.

## 5 Model quality [i](#)

### 5.1 Standard geometry [i](#)

Bond lengths and bond angles in the following residue types are not validated in this section: 93O

The Z score for a bond length (or angle) is the number of standard deviations the observed value is removed from the expected value. A bond length (or angle) with  $|Z| > 5$  is considered an outlier worth inspection. RMSZ is the root-mean-square of all Z scores of the bond lengths (or angles).

Mol	Chain	Bond lengths		Bond angles	
		RMSZ	# Z  >5	RMSZ	# Z  >5
1	A	0.71	0/1833	1.15	20/2479 (0.8%)
2	B	0.83	0/82	1.04	0/110
All	All	0.71	0/1915	1.14	20/2589 (0.8%)

Chiral center outliers are detected by calculating the chiral volume of a chiral center and verifying if the center is modelled as a planar moiety or with the opposite hand. A planarity outlier is detected by checking planarity of atoms in a peptide group, atoms in a mainchain group or atoms of a sidechain that are expected to be planar.

Mol	Chain	#Chirality outliers	#Planarity outliers
1	A	0	2

There are no bond length outliers.

All (20) bond angle outliers are listed below:

Mol	Chain	Res	Type	Atoms	Z	Observed( $^{\circ}$ )	Ideal( $^{\circ}$ )
1	A	277	GLU	CB-CA-C	-11.27	87.86	110.40
1	A	339	LYS	CB-CA-C	-10.30	89.81	110.40
1	A	278	PHE	N-CA-C	8.94	135.15	111.00
1	A	277	GLU	N-CA-C	8.74	134.59	111.00
1	A	257	MET	N-CA-CB	-8.73	94.89	110.60
1	A	278	PHE	N-CA-CB	-7.86	96.46	110.60
1	A	339	LYS	N-CA-C	7.85	132.20	111.00
1	A	270	THR	N-CA-C	7.25	130.57	111.00
1	A	405	GLU	CB-CA-C	7.13	124.65	110.40
1	A	276	GLU	CB-CA-C	-6.54	97.33	110.40
1	A	275	LYS	N-CA-C	6.52	128.60	111.00
1	A	278	PHE	CB-CA-C	-6.35	97.69	110.40
1	A	280	ALA	N-CA-C	6.25	127.89	111.00
1	A	331	ARG	NE-CZ-NH2	6.22	123.41	120.30

*Continued on next page...*



*Continued from previous page...*

Mol	Chain	Res	Type	Atoms	Z	Observed(°)	Ideal(°)
1	A	270	THR	CB-CA-C	-6.00	95.40	111.60
1	A	257	MET	N-CA-C	5.62	126.17	111.00
1	A	357	ILE	N-CA-C	-5.28	96.75	111.00
1	A	400	ASP	CB-CG-OD1	5.03	122.83	118.30
1	A	263	GLN	N-CA-CB	5.03	119.66	110.60
1	A	405	GLU	N-CA-C	-5.02	97.45	111.00

There are no chirality outliers.

All (2) planarity outliers are listed below:

Mol	Chain	Res	Type	Group
1	A	280	ALA	Peptide
1	A	422	HIS	Peptide

## 5.2 Too-close contacts [\(i\)](#)

In the following table, the Non-H and H(model) columns list the number of non-hydrogen atoms and hydrogen atoms in the chain respectively. The H(added) column lists the number of hydrogen atoms added and optimized by MolProbity. The Clashes column lists the number of clashes within the asymmetric unit, whereas Symm-Clashes lists symmetry related clashes.

Mol	Chain	Non-H	H(model)	H(added)	Clashes	Symm-Clashes
1	A	1796	0	1776	72	0
2	B	83	0	81	7	0
3	A	36	0	0	16	0
4	A	51	0	0	7	0
4	B	1	0	0	0	0
All	All	1967	0	1857	85	0

The all-atom clashscore is defined as the number of clashes found per 1000 atoms (including hydrogen atoms). The all-atom clashscore for this structure is 23.

All (85) close contacts within the same asymmetric unit are listed below, sorted by their clash magnitude.

Atom-1	Atom-2	Interatomic distance (Å)	Clash overlap (Å)
2:B:745:GLU:CG	2:B:746:ASN:H	1.14	1.39
1:A:279:SER:OG	1:A:355:SER:HA	1.27	1.25
1:A:279:SER:OG	1:A:355:SER:CA	1.83	1.25
1:A:279:SER:OG	1:A:355:SER:N	1.74	1.19

*Continued on next page...*

*Continued from previous page...*

Atom-1	Atom-2	Interatomic distance (Å)	Clash overlap (Å)
2:B:745:GLU:HG3	2:B:746:ASN:H	0.99	1.16
2:B:745:GLU:CG	2:B:746:ASN:N	1.92	1.12
2:B:745:GLU:HG2	2:B:746:ASN:H	1.01	1.07
1:A:275:LYS:C	1:A:277:GLU:H	1.59	1.00
1:A:279:SER:OG	1:A:354:ASN:C	2.02	0.97
1:A:278:PHE:CB	1:A:283:ASN:ND2	2.28	0.96
1:A:275:LYS:C	1:A:277:GLU:N	2.20	0.91
1:A:424:PRO:HA	4:A:614:HOH:O	1.71	0.91
1:A:447:HIS:HA	3:A:501:93O:C	2.03	0.88
2:B:745:GLU:HG3	2:B:746:ASN:N	1.64	0.88
1:A:280:ALA:HB1	1:A:283:ASN:H	1.36	0.88
1:A:278:PHE:CB	1:A:283:ASN:HD21	1.87	0.87
1:A:279:SER:O	1:A:280:ALA:HB2	1.75	0.87
2:B:745:GLU:HG2	2:B:746:ASN:N	1.70	0.86
1:A:280:ALA:CB	1:A:283:ASN:HB2	2.10	0.82
1:A:279:SER:HG	1:A:355:SER:CA	1.89	0.81
1:A:417:LYS:O	1:A:421:ILE:CD1	2.30	0.80
1:A:279:SER:HG	1:A:355:SER:N	1.75	0.80
1:A:279:SER:HG	1:A:355:SER:HA	1.46	0.80
1:A:329:PHE:HZ	3:A:501:93O:O5	1.65	0.78
1:A:280:ALA:HB1	1:A:283:ASN:N	1.98	0.77
1:A:279:SER:CB	1:A:355:SER:HA	2.14	0.76
1:A:466:CYS:HA	1:A:471:VAL:CG2	2.16	0.75
1:A:256:ILE:O	1:A:259:SER:HB2	1.90	0.72
1:A:274:LEU:O	1:A:351:ARG:NH1	2.23	0.71
1:A:280:ALA:CB	1:A:283:ASN:H	2.04	0.71
1:A:261:ASN:OD1	1:A:379:GLN:NE2	2.26	0.69
1:A:313:HIS:HB3	4:A:643:HOH:O	1.95	0.66
1:A:417:LYS:O	1:A:421:ILE:HD12	1.94	0.66
1:A:359:ASP:HA	1:A:362:ILE:HB	1.79	0.63
3:A:501:93O:C23	3:A:501:93O:C22	2.76	0.62
3:A:501:93O:C7	3:A:501:93O:C18	2.79	0.61
1:A:417:LYS:O	1:A:421:ILE:HD13	2.01	0.60
1:A:446:HIS:HD1	3:A:501:93O:C26	2.14	0.60
1:A:446:HIS:ND1	3:A:501:93O:O6	2.33	0.59
1:A:256:ILE:O	1:A:259:SER:CB	2.52	0.58
1:A:420:LYS:HB3	1:A:421:ILE:HD12	1.86	0.57
1:A:279:SER:OG	1:A:354:ASN:O	2.22	0.57
1:A:404:VAL:O	1:A:407:LEU:HB2	2.04	0.57
1:A:255:PHE:O	1:A:259:SER:OG	2.16	0.57
1:A:324:ALA:HB3	4:A:625:HOH:O	2.04	0.57

*Continued on next page...*

Continued from previous page...

Atom-1	Atom-2	Interatomic distance (Å)	Clash overlap (Å)
1:A:280:ALA:HB2	1:A:283:ASN:HB2	1.84	0.56
1:A:275:LYS:O	1:A:277:GLU:N	2.39	0.56
1:A:465:LEU:HA	1:A:468:ILE:HG22	1.88	0.56
1:A:258:ASP:OD1	1:A:258:ASP:N	2.40	0.55
1:A:288:THR:O	1:A:292:THR:OG1	2.17	0.54
1:A:279:SER:O	1:A:280:ALA:CB	2.45	0.54
1:A:385:LEU:HA	1:A:388:ILE:HD12	1.90	0.54
1:A:450:MET:SD	3:A:501:93O:O4	2.66	0.54
1:A:446:HIS:ND1	3:A:501:93O:C26	2.71	0.53
1:A:329:PHE:CZ	3:A:501:93O:O5	2.55	0.53
1:A:446:HIS:CD2	4:A:638:HOH:O	2.61	0.53
1:A:463:PRO:O	1:A:466:CYS:HB2	2.08	0.53
1:A:280:ALA:CB	1:A:283:ASN:CB	2.86	0.52
1:A:341:PRO:HG2	1:A:344:HIS:CE1	2.44	0.52
1:A:466:CYS:HA	1:A:471:VAL:HG23	1.88	0.52
1:A:421:ILE:HD12	1:A:421:ILE:N	2.24	0.52
1:A:280:ALA:HB3	1:A:283:ASN:HB2	1.90	0.52
1:A:424:PRO:CD	1:A:424:PRO:O	2.57	0.52
3:A:501:93O:C8	3:A:501:93O:C3	2.88	0.52
1:A:361:TYR:O	3:A:501:93O:C26	2.58	0.51
1:A:332:SER:O	1:A:335:ILE:HG22	2.11	0.50
2:B:750:ARG:NH1	2:B:754:ASP:OD2	2.34	0.49
1:A:372:ILE:HD11	1:A:377:MET:HE1	1.93	0.49
1:A:255:PHE:O	1:A:255:PHE:CD1	2.65	0.49
1:A:405:GLU:O	1:A:406:LYS:CB	2.61	0.49
1:A:349:GLU:HG3	1:A:366:PHE:CZ	2.49	0.48
1:A:276:GLU:O	1:A:277:GLU:CB	2.62	0.47
3:A:501:93O:O4	3:A:501:93O:C22	2.63	0.46
1:A:404:VAL:C	1:A:405:GLU:O	2.48	0.46
1:A:313:HIS:HA	1:A:316:GLN:OE1	2.17	0.44
1:A:349:GLU:HG3	1:A:366:PHE:CE2	2.52	0.44
3:A:501:93O:C12	3:A:501:93O:O2	2.65	0.44
1:A:329:PHE:HZ	3:A:501:93O:C24	2.29	0.44
1:A:446:HIS:HD2	4:A:638:HOH:O	1.99	0.44
1:A:401:ARG:NH1	4:A:608:HOH:O	2.46	0.44
1:A:359:ASP:O	1:A:360:GLU:C	2.56	0.44
1:A:270:THR:O	1:A:270:THR:HG22	2.18	0.43
3:A:501:93O:C8	3:A:501:93O:C18	2.97	0.42
1:A:269:ILE:N	4:A:611:HOH:O	2.52	0.42
1:A:287:LEU:HD21	3:A:501:93O:O3	2.20	0.41

There are no symmetry-related clashes.

## 5.3 Torsion angles [i](#)

### 5.3.1 Protein backbone [i](#)

In the following table, the Percentiles column shows the percent Ramachandran outliers of the chain as a percentile score with respect to all X-ray entries followed by that with respect to entries of similar resolution.

The Analysed column shows the number of residues for which the backbone conformation was analysed, and the total number of residues.

Mol	Chain	Analysed	Favoured	Allowed	Outliers	Percentiles	
1	A	219/229 (96%)	194 (89%)	21 (10%)	4 (2%)	8	33
2	B	9/11 (82%)	9 (100%)	0	0	100	100
All	All	228/240 (95%)	203 (89%)	21 (9%)	4 (2%)	8	33

All (4) Ramachandran outliers are listed below:

Mol	Chain	Res	Type
1	A	257	MET
1	A	271	ASN
1	A	359	ASP
1	A	276	GLU

### 5.3.2 Protein sidechains [i](#)

In the following table, the Percentiles column shows the percent sidechain outliers of the chain as a percentile score with respect to all X-ray entries followed by that with respect to entries of similar resolution.

The Analysed column shows the number of residues for which the sidechain conformation was analysed, and the total number of residues.

Mol	Chain	Analysed	Rotameric	Outliers	Percentiles	
1	A	198/212 (93%)	188 (95%)	10 (5%)	24	56
2	B	8/10 (80%)	7 (88%)	1 (12%)	4	17
All	All	206/222 (93%)	195 (95%)	11 (5%)	22	55

All (11) residues with a non-rotameric sidechain are listed below:

Mol	Chain	Res	Type
1	A	256	ILE
1	A	258	ASP

*Continued on next page...*

*Continued from previous page...*

Mol	Chain	Res	Type
1	A	262	LYS
1	A	275	LYS
1	A	279	SER
1	A	304	LYS
1	A	342	SER
1	A	351	ARG
1	A	384	LEU
1	A	422	HIS
2	B	750	ARG

Some sidechains can be flipped to improve hydrogen bonding and reduce clashes. All (2) such sidechains are listed below:

Mol	Chain	Res	Type
1	A	271	ASN
1	A	283	ASN

### 5.3.3 RNA [i](#)

There are no RNA molecules in this entry.

## 5.4 Non-standard residues in protein, DNA, RNA chains [i](#)

There are no non-standard protein/DNA/RNA residues in this entry.

## 5.5 Carbohydrates [i](#)

There are no carbohydrates in this entry.

## 5.6 Ligand geometry [i](#)

1 ligand is modelled in this entry.

In the following table, the Counts columns list the number of bonds (or angles) for which Mogul statistics could be retrieved, the number of bonds (or angles) that are observed in the model and the number of bonds (or angles) that are defined in the Chemical Component Dictionary. The Link column lists molecule types, if any, to which the group is linked. The Z score for a bond length (or angle) is the number of standard deviations the observed value is removed from the expected value. A bond length (or angle) with  $|Z| > 2$  is considered an outlier worth inspection. RMSZ is the root-mean-square of all Z scores of the bond lengths (or angles).

Mol	Type	Chain	Res	Link	Bond lengths			Bond angles		
					Counts	RMSZ	# Z  > 2	Counts	RMSZ	# Z  > 2
3	93O	A	501	-	37,38,38	2.85	12 (32%)	49,51,51	3.80	28 (57%)

In the following table, the Chirals column lists the number of chiral outliers, the number of chiral centers analysed, the number of these observed in the model and the number defined in the Chemical Component Dictionary. Similar counts are reported in the Torsion and Rings columns. '-' means no outliers of that kind were identified.

Mol	Type	Chain	Res	Link	Chirals	Torsions	Rings
3	93O	A	501	-	-	14/26/28/28	0/3/3/3

All (12) bond length outliers are listed below:

Mol	Chain	Res	Type	Atoms	Z	Observed(Å)	Ideal(Å)
3	A	501	93O	O2-N1	10.72	1.41	1.22
3	A	501	93O	C4-C5	6.91	1.53	1.41
3	A	501	93O	O1-C7	5.86	1.48	1.33
3	A	501	93O	C2-C1	5.05	1.50	1.41
3	A	501	93O	C3-C4	4.07	1.47	1.40
3	A	501	93O	C19-N1	-3.35	1.37	1.45
3	A	501	93O	C3-C17	3.12	1.55	1.50
3	A	501	93O	C10-C9	2.38	1.39	1.31
3	A	501	93O	C-C1	-2.35	1.46	1.50
3	A	501	93O	O5-C23	2.34	1.39	1.33
3	A	501	93O	C18-C19	-2.27	1.35	1.39
3	A	501	93O	O4-C23	-2.15	1.16	1.22

All (28) bond angle outliers are listed below:

Mol	Chain	Res	Type	Atoms	Z	Observed(°)	Ideal(°)
3	A	501	93O	C3-C2-C1	9.13	128.83	119.88
3	A	501	93O	O5-C23-C2	8.32	131.07	112.33
3	A	501	93O	C-C1-C2	-7.90	112.21	122.27
3	A	501	93O	C3-C4-C5	6.49	126.25	119.88
3	A	501	93O	O5-C23-O4	-6.22	111.07	123.67
3	A	501	93O	C4-C3-C2	-6.16	102.53	117.25
3	A	501	93O	C5-N-C1	-5.93	110.91	119.64
3	A	501	93O	C22-C17-C18	-5.76	110.02	118.16
3	A	501	93O	C3-C2-C23	-5.29	110.02	120.31
3	A	501	93O	O1-C8-C9	-5.07	97.12	108.97
3	A	501	93O	C3-C4-C7	-4.83	110.91	120.31
3	A	501	93O	C8-O1-C7	4.71	135.30	115.99
3	A	501	93O	C2-C1-N	4.41	125.97	121.83

*Continued on next page...*

Continued from previous page...

Mol	Chain	Res	Type	Atoms	Z	Observed(°)	Ideal(°)
3	A	501	93O	C21-C22-C17	4.36	126.05	120.56
3	A	501	93O	C22-C17-C3	4.25	127.85	120.79
3	A	501	93O	O1-C7-O	-4.21	115.12	123.67
3	A	501	93O	C6-C5-C4	-3.94	117.25	122.27
3	A	501	93O	C4-C5-N	3.88	125.47	121.83
3	A	501	93O	C11-C10-C9	-3.81	117.46	126.99
3	A	501	93O	C-C1-N	3.45	121.82	116.49
3	A	501	93O	C18-C19-N1	-3.18	115.94	118.75
3	A	501	93O	C17-C18-C19	3.01	125.10	120.35
3	A	501	93O	C21-C20-C19	-2.98	115.28	119.41
3	A	501	93O	O1-C7-C4	2.91	118.87	112.33
3	A	501	93O	O2-N1-C19	2.45	122.26	118.80
3	A	501	93O	C20-C19-C18	2.41	123.16	120.09
3	A	501	93O	O5-C24-C25	-2.34	101.71	108.61
3	A	501	93O	C20-C19-N1	2.02	120.90	119.38

There are no chirality outliers.

All (14) torsion outliers are listed below:

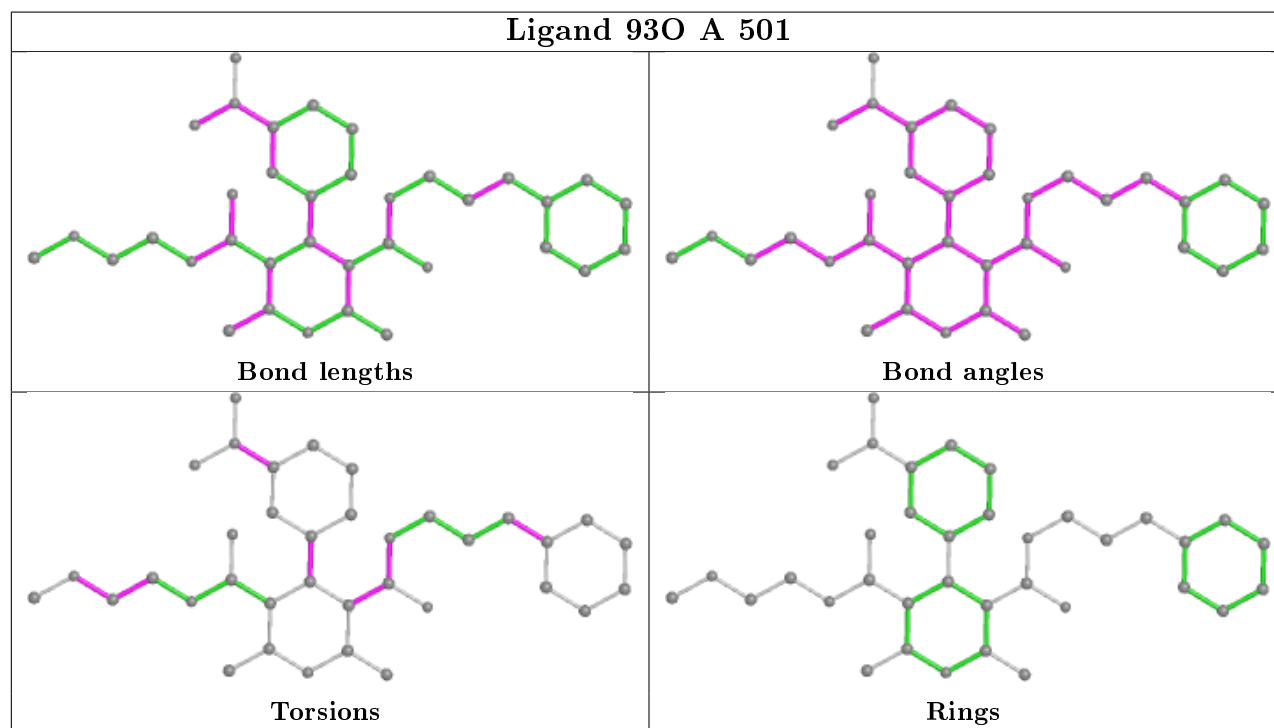
Mol	Chain	Res	Type	Atoms
3	A	501	93O	C18-C19-N1-O2
3	A	501	93O	C20-C19-N1-O2
3	A	501	93O	C18-C17-C3-C2
3	A	501	93O	C22-C17-C3-C2
3	A	501	93O	C18-C17-C3-C4
3	A	501	93O	C22-C17-C3-C4
3	A	501	93O	O-C7-O1-C8
3	A	501	93O	C4-C7-O1-C8
3	A	501	93O	O5-C24-C25-O6
3	A	501	93O	C9-C10-C11-C16
3	A	501	93O	C9-C10-C11-C12
3	A	501	93O	C24-C25-O6-C26
3	A	501	93O	C3-C4-C7-O
3	A	501	93O	C3-C4-C7-O1

There are no ring outliers.

1 monomer is involved in 16 short contacts:

Mol	Chain	Res	Type	Clashes	Symm-Clashes
3	A	501	93O	16	0

The following is a two-dimensional graphical depiction of Mogul quality analysis of bond lengths, bond angles, torsion angles, and ring geometry for all instances of the Ligand of Interest. In addition, ligands with molecular weight > 250 and outliers as shown on the validation Tables will also be included. For torsion angles, if less than 5% of the Mogul distribution of torsion angles is within 10 degrees of the torsion angle in question, then that torsion angle is considered an outlier. Any bond that is central to one or more torsion angles identified as an outlier by Mogul will be highlighted in the graph. For rings, the root-mean-square deviation (RMSD) between the ring in question and similar rings identified by Mogul is calculated over all ring torsion angles. If the average RMSD is greater than 60 degrees and the minimal RMSD between the ring in question and any Mogul-identified rings is also greater than 60 degrees, then that ring is considered an outlier. The outliers are highlighted in purple. The color gray indicates Mogul did not find sufficient equivalents in the CSD to analyse the geometry.



## 5.7 Other polymers [\(i\)](#)

There are no such residues in this entry.

## 5.8 Polymer linkage issues [\(i\)](#)

There are no chain breaks in this entry.



## 6 Fit of model and data [i](#)

### 6.1 Protein, DNA and RNA chains [i](#)

In the following table, the column labelled '#RSRZ> 2' contains the number (and percentage) of RSRZ outliers, followed by percent RSRZ outliers for the chain as percentile scores relative to all X-ray entries and entries of similar resolution. The OWAB column contains the minimum, median, 95<sup>th</sup> percentile and maximum values of the occupancy-weighted average B-factor per residue. The column labelled 'Q< 0.9' lists the number of (and percentage) of residues with an average occupancy less than 0.9.

Mol	Chain	Analysed	<RSRZ>	#RSRZ>2	OWAB(Å <sup>2</sup> )	Q<0.9
1	A	223/229 (97%)	-0.22	3 (1%) 77 61	15, 31, 66, 85	0
2	B	11/11 (100%)	-0.21	0 100 100	31, 36, 43, 50	0
All	All	234/240 (97%)	-0.22	3 (1%) 77 61	15, 32, 66, 85	0

All (3) RSRZ outliers are listed below:

Mol	Chain	Res	Type	RSRZ
1	A	422	HIS	3.1
1	A	263	GLN	2.8
1	A	458	ASP	2.0

### 6.2 Non-standard residues in protein, DNA, RNA chains [i](#)

There are no non-standard protein/DNA/RNA residues in this entry.

### 6.3 Carbohydrates [i](#)

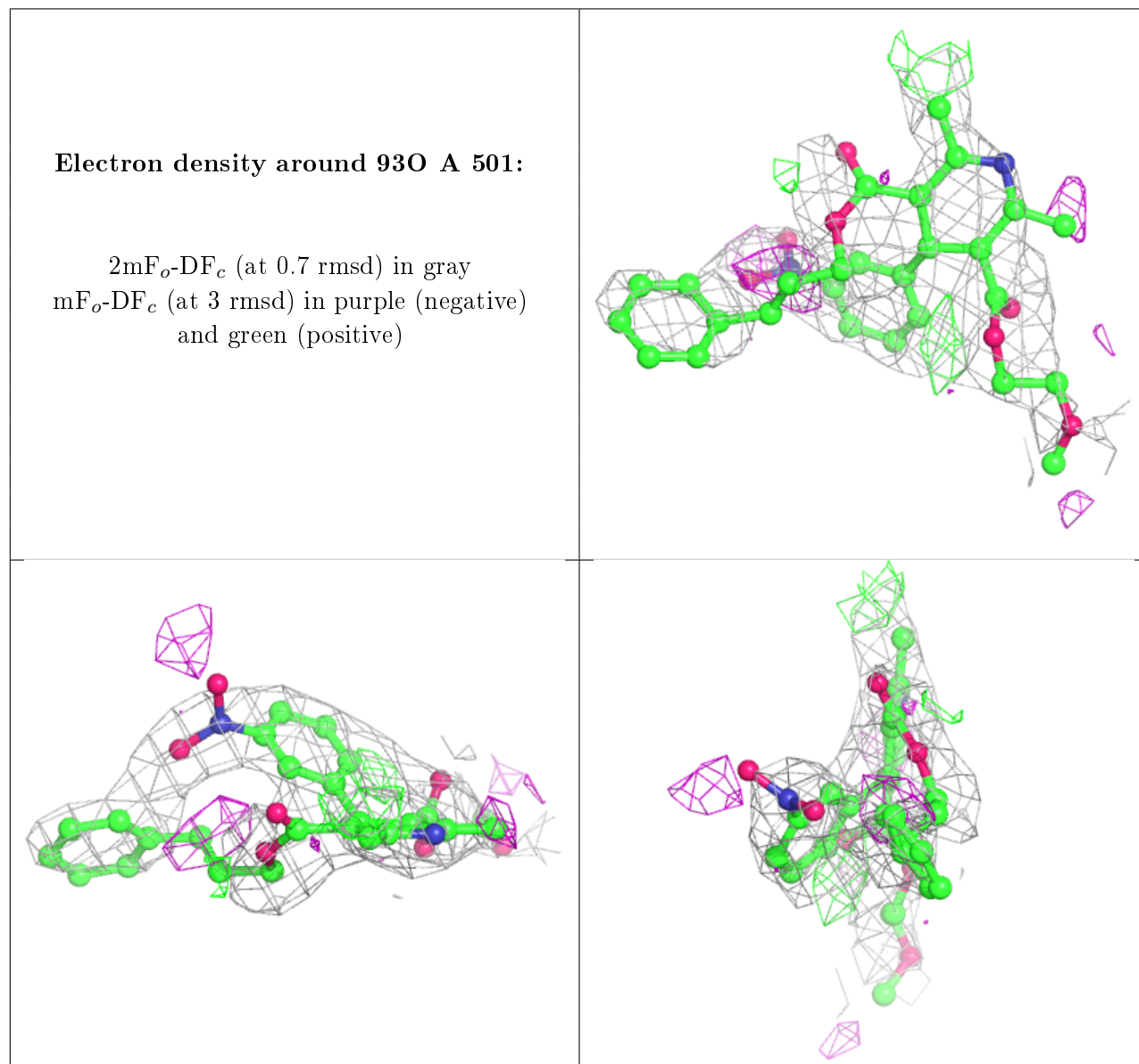
There are no carbohydrates in this entry.

### 6.4 Ligands [i](#)

In the following table, the Atoms column lists the number of modelled atoms in the group and the number defined in the chemical component dictionary. The B-factors column lists the minimum, median, 95<sup>th</sup> percentile and maximum values of B factors of atoms in the group. The column labelled 'Q< 0.9' lists the number of atoms with occupancy less than 0.9.

Mol	Type	Chain	Res	Atoms	RSCC	RSR	B-factors(Å <sup>2</sup> )	Q<0.9
3	93O	A	501	36/36	0.83	0.39	34,55,66,74	0

The following is a graphical depiction of the model fit to experimental electron density of all instances of the Ligand of Interest. In addition, ligands with molecular weight > 250 and outliers as shown on the geometry validation Tables will also be included. Each fit is shown from different orientation to approximate a three-dimensional view.



## 6.5 Other polymers [\(i\)](#)

There are no such residues in this entry.