



# Full wwPDB X-ray Structure Validation Report ⓘ

May 23, 2020 – 08:56 pm BST

PDB ID : 5Y65  
Title : Phosphoglycerate mutase 1 complexed with a small molecule inhibitor KH2  
Authors : Jiang, L.L.; Zhou, L.  
Deposited on : 2017-08-10  
Resolution : 2.55 Å(reported)

This is a Full wwPDB X-ray Structure Validation Report for a publicly released PDB entry.

We welcome your comments at [validation@mail.wwpdb.org](mailto:validation@mail.wwpdb.org)

A user guide is available at

<https://www.wwpdb.org/validation/2017/XrayValidationReportHelp>

with specific help available everywhere you see the ⓘ symbol.

---

The following versions of software and data (see [references ⓘ](#)) were used in the production of this report:

MolProbity : 4.02b-467  
Mogul : 1.8.5 (274361), CSD as541be (2020)  
Xtriage (Phenix) : 1.13  
EDS : 2.11  
buster-report : 1.1.7 (2018)  
Percentile statistics : 20191225.v01 (using entries in the PDB archive December 25th 2019)  
Refmac : 5.8.0158  
CCP4 : 7.0.044 (Gargrove)  
Ideal geometry (proteins) : Engh & Huber (2001)  
Ideal geometry (DNA, RNA) : Parkinson et al. (1996)  
Validation Pipeline (wwPDB-VP) : 2.11

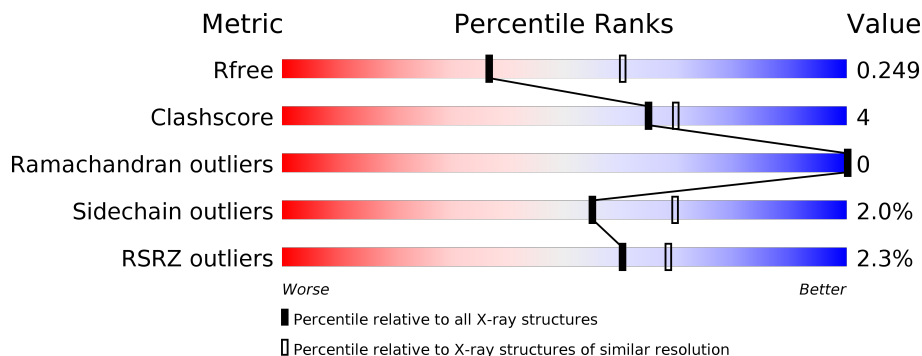
# 1 Overall quality at a glance

The following experimental techniques were used to determine the structure:

*X-RAY DIFFRACTION*

The reported resolution of this entry is 2.55 Å.

Percentile scores (ranging between 0-100) for global validation metrics of the entry are shown in the following graphic. The table shows the number of entries on which the scores are based.



Metric	Whole archive (#Entries)	Similar resolution (#Entries, resolution range(Å))
$R_{free}$	130704	1279 (2.58-2.54)
Clashscore	141614	1327 (2.58-2.54)
Ramachandran outliers	138981	1312 (2.58-2.54)
Sidechain outliers	138945	1312 (2.58-2.54)
RSRZ outliers	127900	1269 (2.58-2.54)

The table below summarises the geometric issues observed across the polymeric chains and their fit to the electron density. The red, orange, yellow and green segments on the lower bar indicate the fraction of residues that contain outliers for  $\geq 3$ , 2, 1 and 0 types of geometric quality criteria respectively. A grey segment represents the fraction of residues that are not modelled. The numeric value for each fraction is indicated below the corresponding segment, with a dot representing fractions  $\leq 5\%$ . The upper red bar (where present) indicates the fraction of residues that have poor fit to the electron density. The numeric value is given above the bar.

Mol	Chain	Length	Quality of chain
1	B	262	
2	C	262	

## 2 Entry composition

There are 6 unique types of molecules in this entry. The entry contains 3912 atoms, of which 0 are hydrogens and 0 are deuteriums.

In the tables below, the ZeroOcc column contains the number of atoms modelled with zero occupancy, the AltConf column contains the number of residues with at least one atom in alternate conformation and the Trace column contains the number of residues modelled with at most 2 atoms.

- Molecule 1 is a protein called Phosphoglycerate mutase 1.

Mol	Chain	Residues	Atoms					ZeroOcc	AltConf	Trace
			Total	C	N	O	S			
1	B	233	1882	1199	332	345	6	0	1	0

There are 8 discrepancies between the modelled and reference sequences:

Chain	Residue	Modelled	Actual	Comment	Reference
B	255	LEU	-	expression tag	UNP P18669
B	256	GLU	-	expression tag	UNP P18669
B	257	HIS	-	expression tag	UNP P18669
B	258	HIS	-	expression tag	UNP P18669
B	259	HIS	-	expression tag	UNP P18669
B	260	HIS	-	expression tag	UNP P18669
B	261	HIS	-	expression tag	UNP P18669
B	262	HIS	-	expression tag	UNP P18669

- Molecule 2 is a protein called Phosphoglycerate mutase 1.

Mol	Chain	Residues	Atoms						ZeroOcc	AltConf	Trace
			Total	C	N	O	P	S			
2	C	239	1932	1226	342	357	1	6	0	0	0

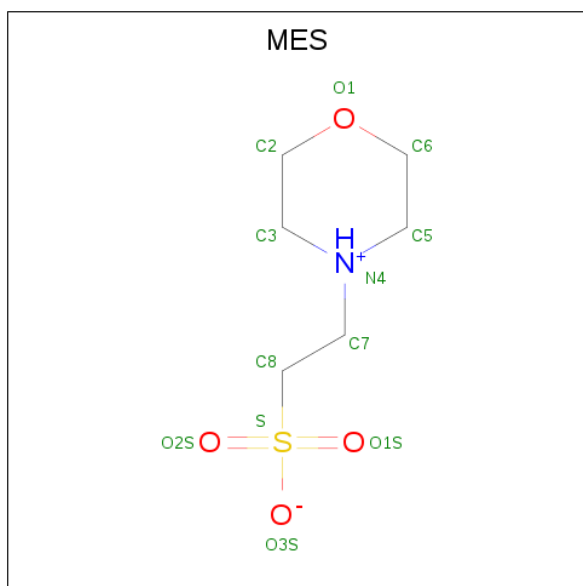
There are 8 discrepancies between the modelled and reference sequences:

Chain	Residue	Modelled	Actual	Comment	Reference
C	255	LEU	-	expression tag	UNP P18669
C	256	GLU	-	expression tag	UNP P18669
C	257	HIS	-	expression tag	UNP P18669
C	258	HIS	-	expression tag	UNP P18669
C	259	HIS	-	expression tag	UNP P18669
C	260	HIS	-	expression tag	UNP P18669
C	261	HIS	-	expression tag	UNP P18669
C	262	HIS	-	expression tag	UNP P18669

- Molecule 3 is CHLORIDE ION (three-letter code: CL) (formula: Cl).

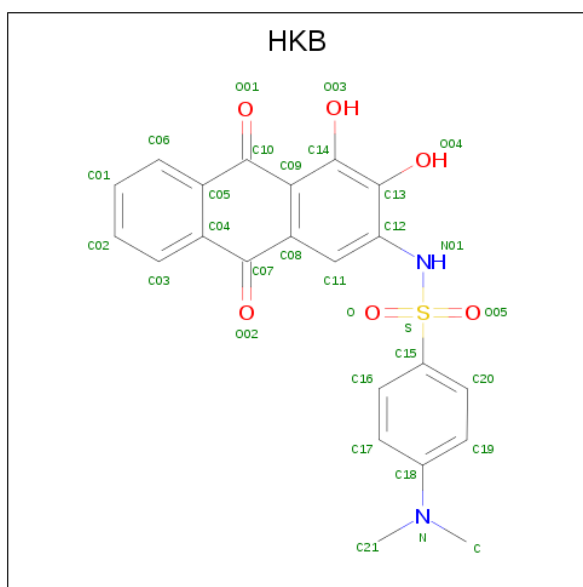
Mol	Chain	Residues	Atoms		ZeroOcc	AltConf
3	B	1	Total	Cl	0	0
			1	1		

- Molecule 4 is 2-(N-MORPHOLINO)-ETHANESULFONIC ACID (three-letter code: MES) (formula: C<sub>6</sub>H<sub>13</sub>NO<sub>4</sub>S).



Mol	Chain	Residues	Atoms				ZeroOcc	AltConf	
4	C	1	Total	C	N	O	S	0	0
			12	6	1	4	1		

- Molecule 5 is {N}-[3,4-bis(oxidanyl)-9,10-bis(oxidanylidene)anthracen-2-yl]-4-(dimethylamino)benzenesulfonamide (three-letter code: HKB) (formula: C<sub>22</sub>H<sub>18</sub>N<sub>2</sub>O<sub>6</sub>S).



Mol	Chain	Residues	Atoms					ZeroOcc	AltConf
			Total	C	N	O	S		
5	C	1	31	22	2	6	1	0	0

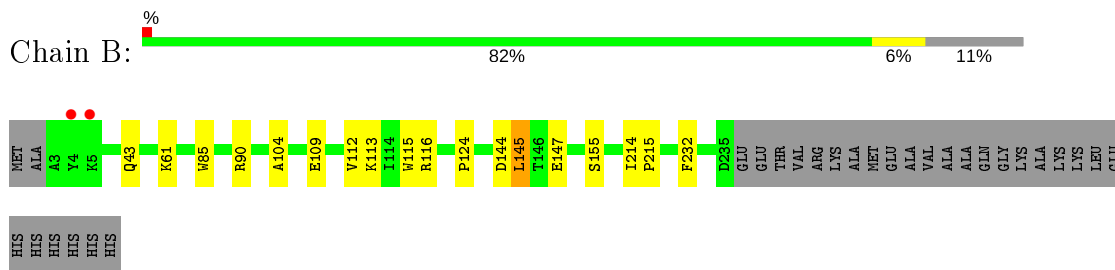
- Molecule 6 is water.

Mol	Chain	Residues	Atoms		ZeroOcc	AltConf
6	B	22	Total	O	0	0
			22	22		
6	C	32	Total	O	0	0
			32	32		

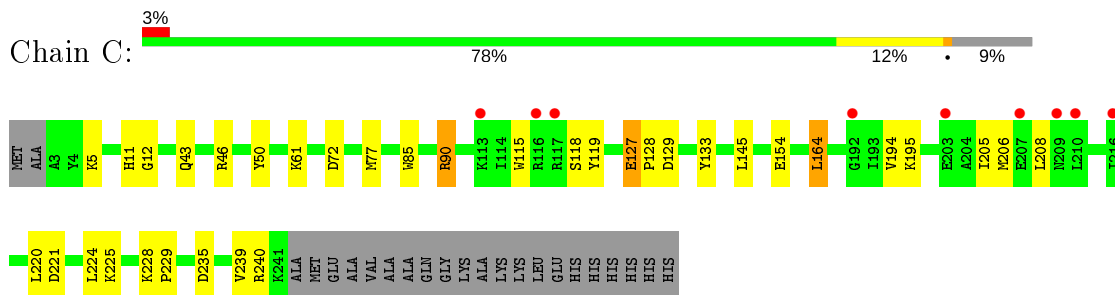
### 3 Residue-property plots [i](#)

These plots are drawn for all protein, RNA and DNA chains in the entry. The first graphic for a chain summarises the proportions of the various outlier classes displayed in the second graphic. The second graphic shows the sequence view annotated by issues in geometry and electron density. Residues are color-coded according to the number of geometric quality criteria for which they contain at least one outlier: green = 0, yellow = 1, orange = 2 and red = 3 or more. A red dot above a residue indicates a poor fit to the electron density ( $RSRZ > 2$ ). Stretches of 2 or more consecutive residues without any outlier are shown as a green connector. Residues present in the sample, but not in the model, are shown in grey.

- Molecule 1: Phosphoglycerate mutase 1



- Molecule 2: Phosphoglycerate mutase 1



## 4 Data and refinement statistics

Property	Value	Source
Space group	P 21 21 21	Depositor
Cell constants a, b, c, $\alpha$ , $\beta$ , $\gamma$	79.19Å 82.93Å 99.80Å 90.00° 90.00° 90.00°	Depositor
Resolution (Å)	49.90 – 2.55 49.90 – 2.55	Depositor EDS
% Data completeness (in resolution range)	99.4 (49.90-2.55) 99.4 (49.90-2.55)	Depositor EDS
$R_{merge}$	0.11	Depositor
$R_{sym}$	(Not available)	Depositor
$\langle I/\sigma(I) \rangle$ <sup>1</sup>	1.95 (at 2.54Å)	Xtrriage
Refinement program	PHENIX	Depositor
R, $R_{free}$	0.198 , 0.248 0.198 , 0.249	Depositor DCC
$R_{free}$ test set	1116 reflections (5.12%)	wwPDB-VP
Wilson B-factor (Å <sup>2</sup> )	51.5	Xtrriage
Anisotropy	0.087	Xtrriage
Bulk solvent $k_{sol}$ (e/Å <sup>3</sup> ), $B_{sol}$ (Å <sup>2</sup> )	0.34 , 30.5	EDS
L-test for twinning <sup>2</sup>	$\langle  L  \rangle = 0.50$ , $\langle L^2 \rangle = 0.33$	Xtrriage
Estimated twinning fraction	0.016 for k,h,-l	Xtrriage
$F_o, F_c$ correlation	0.94	EDS
Total number of atoms	3912	wwPDB-VP
Average B, all atoms (Å <sup>2</sup> )	34.0	wwPDB-VP

Xtrriage's analysis on translational NCS is as follows: *The largest off-origin peak in the Patterson function is 5.32% of the height of the origin peak. No significant pseudotranslation is detected.*

<sup>1</sup> Intensities estimated from amplitudes.

<sup>2</sup> Theoretical values of  $\langle |L| \rangle$ ,  $\langle L^2 \rangle$  for acentric reflections are 0.5, 0.333 respectively for untwinned datasets, and 0.375, 0.2 for perfectly twinned datasets.

## 5 Model quality [i](#)

### 5.1 Standard geometry [i](#)

Bond lengths and bond angles in the following residue types are not validated in this section: HKB, NEP, MES, CL

The Z score for a bond length (or angle) is the number of standard deviations the observed value is removed from the expected value. A bond length (or angle) with  $|Z| > 5$  is considered an outlier worth inspection. RMSZ is the root-mean-square of all Z scores of the bond lengths (or angles).

Mol	Chain	Bond lengths		Bond angles	
		RMSZ	# Z  >5	RMSZ	# Z  >5
1	B	0.47	0/1934	0.60	0/2624
2	C	0.47	0/1965	0.60	0/2663
All	All	0.47	0/3899	0.60	0/5287

There are no bond length outliers.

There are no bond angle outliers.

There are no chirality outliers.

There are no planarity outliers.

### 5.2 Too-close contacts [i](#)

In the following table, the Non-H and H(model) columns list the number of non-hydrogen atoms and hydrogen atoms in the chain respectively. The H(added) column lists the number of hydrogen atoms added and optimized by MolProbity. The Clashes column lists the number of clashes within the asymmetric unit, whereas Symm-Clashes lists symmetry related clashes.

Mol	Chain	Non-H	H(model)	H(added)	Clashes	Symm-Clashes
1	B	1882	0	1860	10	0
2	C	1932	0	1906	21	0
3	B	1	0	0	0	0
4	C	12	0	12	0	0
5	C	31	0	0	1	0
6	B	22	0	0	1	0
6	C	32	0	0	0	0
All	All	3912	0	3778	31	0

The all-atom clashscore is defined as the number of clashes found per 1000 atoms (including hydrogen atoms). The all-atom clashscore for this structure is 4.



All (31) close contacts within the same asymmetric unit are listed below, sorted by their clash magnitude.

Atom-1	Atom-2	Interatomic distance (Å)	Clash overlap (Å)
1:B:214:ILE:HD11	1:B:232:PHE:HB3	1.80	0.63
2:C:118:SER:O	2:C:206:MET:HE1	2.06	0.55
1:B:115:TRP:CZ2	1:B:124:PRO:HD3	2.42	0.55
2:C:85:TRP:CD1	2:C:145:LEU:HD11	2.44	0.52
1:B:112:VAL:O	1:B:116:ARG:HG3	2.12	0.50
1:B:90:ARG:HH21	1:B:155:SER:HA	1.76	0.50
2:C:43:GLN:HG2	2:C:46:ARG:HH22	1.79	0.48
2:C:235:ASP:O	2:C:239:VAL:HG23	2.14	0.48
2:C:228:LYS:HB2	2:C:229:PRO:HD2	1.96	0.47
1:B:43:GLN:HG2	6:B:419:HOH:O	2.14	0.47
1:B:115:TRP:CH2	1:B:124:PRO:HD3	2.50	0.46
2:C:72:ASP:HA	2:C:77:MET:HE2	1.98	0.46
2:C:90:ARG:HD2	2:C:154:GLU:O	2.16	0.46
2:C:119:TYR:HA	2:C:206:MET:HE3	1.98	0.46
2:C:11:NEP:ND1	2:C:12:GLY:O	2.49	0.45
2:C:195:LYS:HB2	2:C:205:ILE:HG12	1.99	0.45
2:C:164:LEU:HA	2:C:164:LEU:HD12	1.59	0.44
2:C:119:TYR:HA	2:C:206:MET:CE	2.47	0.44
2:C:221:ASP:OD2	2:C:225:LYS:HG2	2.18	0.43
2:C:194:VAL:HG11	2:C:208:LEU:HD22	2.00	0.43
1:B:85:TRP:NE1	1:B:145:LEU:HD11	2.33	0.42
2:C:5:LYS:HD3	2:C:50:TYR:CE2	2.54	0.42
1:B:214:ILE:HA	1:B:215:PRO:HD3	1.88	0.41
2:C:43:GLN:HG2	2:C:46:ARG:NH2	2.35	0.41
2:C:61:LYS:HE2	2:C:61:LYS:HB3	1.88	0.41
2:C:115:TRP:HB3	5:C:302:HKB:C02	2.51	0.41
2:C:127:GLU:HB3	2:C:129:ASP:OD1	2.21	0.41
1:B:104:ALA:HA	1:B:112:VAL:HG21	2.03	0.41
2:C:128:PRO:HA	2:C:133:TYR:CG	2.56	0.41
1:B:109:GLU:O	1:B:113:LYS:HG3	2.21	0.41
2:C:220:LEU:HB3	2:C:224:LEU:HA	2.03	0.40

There are no symmetry-related clashes.

## 5.3 Torsion angles [i](#)

### 5.3.1 Protein backbone [i](#)

In the following table, the Percentiles column shows the percent Ramachandran outliers of the chain as a percentile score with respect to all X-ray entries followed by that with respect to entries of similar resolution.

The Analysed column shows the number of residues for which the backbone conformation was analysed, and the total number of residues.

Mol	Chain	Analysed	Favoured	Allowed	Outliers	Percentiles	
1	B	232/262 (88%)	228 (98%)	4 (2%)	0	100	100
2	C	236/262 (90%)	231 (98%)	5 (2%)	0	100	100
All	All	468/524 (89%)	459 (98%)	9 (2%)	0	100	100

There are no Ramachandran outliers to report.

### 5.3.2 Protein sidechains [i](#)

In the following table, the Percentiles column shows the percent sidechain outliers of the chain as a percentile score with respect to all X-ray entries followed by that with respect to entries of similar resolution.

The Analysed column shows the number of residues for which the sidechain conformation was analysed, and the total number of residues.

Mol	Chain	Analysed	Rotameric	Outliers	Percentiles	
1	B	199/220 (90%)	194 (98%)	5 (2%)	47	61
2	C	203/219 (93%)	199 (98%)	4 (2%)	55	69
All	All	402/439 (92%)	393 (98%)	9 (2%)	55	66

All (9) residues with a non-rotameric sidechain are listed below:

Mol	Chain	Res	Type
1	B	61	LYS
1	B	144	ASP
1	B	145	LEU
1	B	147[A]	GLU
1	B	147[B]	GLU
2	C	90	ARG
2	C	127	GLU
2	C	164	LEU

*Continued on next page...*

Continued from previous page...

Mol	Chain	Res	Type
2	C	240	ARG

Some sidechains can be flipped to improve hydrogen bonding and reduce clashes. There are no such sidechains identified.

### 5.3.3 RNA [i](#)

There are no RNA molecules in this entry.

## 5.4 Non-standard residues in protein, DNA, RNA chains [i](#)

1 non-standard protein/DNA/RNA residue is modelled in this entry.

In the following table, the Counts columns list the number of bonds (or angles) for which Mogul statistics could be retrieved, the number of bonds (or angles) that are observed in the model and the number of bonds (or angles) that are defined in the Chemical Component Dictionary. The Link column lists molecule types, if any, to which the group is linked. The Z score for a bond length (or angle) is the number of standard deviations the observed value is removed from the expected value. A bond length (or angle) with  $|Z| > 2$  is considered an outlier worth inspection. RMSZ is the root-mean-square of all Z scores of the bond lengths (or angles).

Mol	Type	Chain	Res	Link	Bond lengths			Bond angles		
					Counts	RMSZ	# Z  > 2	Counts	RMSZ	# Z  > 2
2	NEP	C	11	2	10,14,15	5.86	4 (40%)	5,20,22	4.17	4 (80%)

In the following table, the Chirals column lists the number of chiral outliers, the number of chiral centers analysed, the number of these observed in the model and the number defined in the Chemical Component Dictionary. Similar counts are reported in the Torsion and Rings columns. '-' means no outliers of that kind were identified.

Mol	Type	Chain	Res	Link	Chirals	Torsions	Rings
2	NEP	C	11	2	-	0/5/12/14	0/1/1/1

All (4) bond length outliers are listed below:

Mol	Chain	Res	Type	Atoms	Z	Observed(Å)	Ideal(Å)
2	C	11	NEP	P-O3P	17.40	1.62	1.47
2	C	11	NEP	P-O2P	3.42	1.61	1.54
2	C	11	NEP	CD2-CG	3.39	1.41	1.36
2	C	11	NEP	P-O1P	-3.02	1.48	1.54

All (4) bond angle outliers are listed below:

Mol	Chain	Res	Type	Atoms	Z	Observed(°)	Ideal(°)
2	C	11	NEP	O2P-P-O3P	-7.92	96.31	113.44
2	C	11	NEP	CB-CA-C	-3.08	105.69	111.47
2	C	11	NEP	O2P-P-O1P	3.08	118.67	106.57
2	C	11	NEP	O1P-P-O3P	-2.17	108.75	113.44

There are no chirality outliers.

There are no torsion outliers.

There are no ring outliers.

1 monomer is involved in 1 short contact:

Mol	Chain	Res	Type	Clashes	Symm-Clashes
2	C	11	NEP	1	0

## 5.5 Carbohydrates [i](#)

There are no carbohydrates in this entry.

## 5.6 Ligand geometry [i](#)

Of 3 ligands modelled in this entry, 1 is monoatomic - leaving 2 for Mogul analysis.

In the following table, the Counts columns list the number of bonds (or angles) for which Mogul statistics could be retrieved, the number of bonds (or angles) that are observed in the model and the number of bonds (or angles) that are defined in the Chemical Component Dictionary. The Link column lists molecule types, if any, to which the group is linked. The Z score for a bond length (or angle) is the number of standard deviations the observed value is removed from the expected value. A bond length (or angle) with  $|Z| > 2$  is considered an outlier worth inspection. RMSZ is the root-mean-square of all Z scores of the bond lengths (or angles).

Mol	Type	Chain	Res	Link	Bond lengths			Bond angles		
					Counts	RMSZ	$\# Z  > 2$	Counts	RMSZ	$\# Z  > 2$
4	MES	C	301	-	12,12,12	2.24	1 (8%)	14,16,16	2.02	6 (42%)
5	HKB	C	302	-	34,34,34	2.27	15 (44%)	52,52,52	2.34	7 (13%)

In the following table, the Chirals column lists the number of chiral outliers, the number of chiral centers analysed, the number of these observed in the model and the number defined in the Chemical Component Dictionary. Similar counts are reported in the Torsion and Rings columns. '-' means no outliers of that kind were identified.

Mol	Type	Chain	Res	Link	Chirals	Torsions	Rings
4	MES	C	301	-	-	2/6/14/14	0/1/1/1
5	HKB	C	302	-	-	1/15/31/31	0/4/4/4

All (16) bond length outliers are listed below:

Mol	Chain	Res	Type	Atoms	Z	Observed(Å)	Ideal(Å)
4	C	301	MES	C8-S	-7.27	1.67	1.77
5	C	302	HKB	S-N01	5.36	1.72	1.63
5	C	302	HKB	C15-S	3.76	1.82	1.76
5	C	302	HKB	C06-C05	3.47	1.45	1.39
5	C	302	HKB	C18-N	3.44	1.45	1.37
5	C	302	HKB	C11-C08	3.21	1.44	1.39
5	C	302	HKB	O-S	3.17	1.47	1.43
5	C	302	HKB	C09-C14	3.01	1.47	1.41
5	C	302	HKB	O04-C13	2.93	1.43	1.37
5	C	302	HKB	C03-C04	2.91	1.44	1.39
5	C	302	HKB	C08-C09	-2.77	1.37	1.41
5	C	302	HKB	C17-C18	2.62	1.44	1.39
5	C	302	HKB	O03-C14	2.58	1.42	1.37
5	C	302	HKB	C-N	2.25	1.50	1.45
5	C	302	HKB	C12-C13	2.16	1.43	1.40
5	C	302	HKB	C02-C03	2.01	1.43	1.38

All (13) bond angle outliers are listed below:

Mol	Chain	Res	Type	Atoms	Z	Observed(°)	Ideal(°)
5	C	302	HKB	O-S-O05	-14.63	101.56	119.55
5	C	302	HKB	C15-S-N01	3.32	111.01	106.83
4	C	301	MES	C5-N4-C3	3.29	116.25	108.83
4	C	301	MES	C6-C5-N4	-3.16	105.31	110.10
4	C	301	MES	C2-C3-N4	-3.08	105.43	110.10
4	C	301	MES	O3S-S-C8	3.02	110.65	105.77
5	C	302	HKB	O05-S-C15	2.45	110.98	107.97
4	C	301	MES	C7-N4-C5	2.36	117.26	111.23
5	C	302	HKB	C13-C12-N01	2.35	122.79	118.33
5	C	302	HKB	C19-C18-N	-2.32	118.49	121.63
5	C	302	HKB	O-S-C15	2.29	110.79	107.97
4	C	301	MES	O1S-S-C8	2.10	109.44	106.92
5	C	302	HKB	O-S-N01	2.08	111.93	106.73

There are no chirality outliers.

All (3) torsion outliers are listed below:

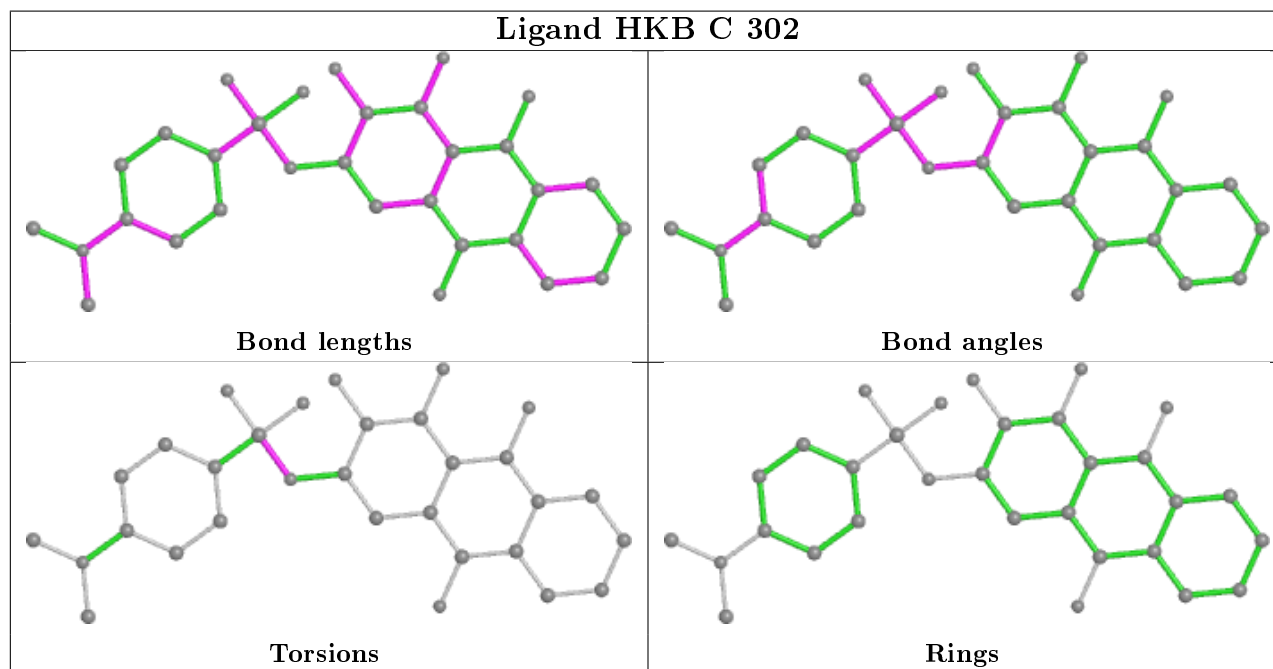
Mol	Chain	Res	Type	Atoms
5	C	302	HKB	C12-N01-S-O
4	C	301	MES	C8-C7-N4-C5
4	C	301	MES	C8-C7-N4-C3

There are no ring outliers.

1 monomer is involved in 1 short contact:

Mol	Chain	Res	Type	Clashes	Symm-Clashes
5	C	302	HKB	1	0

The following is a two-dimensional graphical depiction of Mogul quality analysis of bond lengths, bond angles, torsion angles, and ring geometry for all instances of the Ligand of Interest. In addition, ligands with molecular weight > 250 and outliers as shown on the validation Tables will also be included. For torsion angles, if less than 5% of the Mogul distribution of torsion angles is within 10 degrees of the torsion angle in question, then that torsion angle is considered an outlier. Any bond that is central to one or more torsion angles identified as an outlier by Mogul will be highlighted in the graph. For rings, the root-mean-square deviation (RMSD) between the ring in question and similar rings identified by Mogul is calculated over all ring torsion angles. If the average RMSD is greater than 60 degrees and the minimal RMSD between the ring in question and any Mogul-identified rings is also greater than 60 degrees, then that ring is considered an outlier. The outliers are highlighted in purple. The color gray indicates Mogul did not find sufficient equivalents in the CSD to analyse the geometry.



## 5.7 Other polymers [\(i\)](#)

There are no such residues in this entry.

## 5.8 Polymer linkage issues

There are no chain breaks in this entry.

## 6 Fit of model and data [i](#)

### 6.1 Protein, DNA and RNA chains [i](#)

In the following table, the column labelled '#RSRZ > 2' contains the number (and percentage) of RSRZ outliers, followed by percent RSRZ outliers for the chain as percentile scores relative to all X-ray entries and entries of similar resolution. The OWAB column contains the minimum, median, 95<sup>th</sup> percentile and maximum values of the occupancy-weighted average B-factor per residue. The column labelled 'Q < 0.9' lists the number of (and percentage) of residues with an average occupancy less than 0.9.

Mol	Chain	Analysed	<RSRZ>	#RSRZ>2	OWAB(Å <sup>2</sup> )	Q<0.9
1	B	233/262 (88%)	0.07	2 (0%) 84 89	17, 31, 55, 79	0
2	C	238/262 (90%)	0.20	9 (3%) 40 49	19, 31, 58, 76	0
All	All	471/524 (89%)	0.14	11 (2%) 60 68	17, 31, 56, 79	0

All (11) RSRZ outliers are listed below:

Mol	Chain	Res	Type	RSRZ
2	C	116	ARG	3.6
2	C	207	GLU	3.2
2	C	210	LEU	2.8
2	C	117	ARG	2.7
2	C	209	ASN	2.5
2	C	113	LYS	2.3
2	C	216	ILE	2.1
1	B	4	TYR	2.1
2	C	192	GLY	2.1
2	C	203	GLU	2.1
1	B	5	LYS	2.0

### 6.2 Non-standard residues in protein, DNA, RNA chains [i](#)

In the following table, the Atoms column lists the number of modelled atoms in the group and the number defined in the chemical component dictionary. The B-factors column lists the minimum, median, 95<sup>th</sup> percentile and maximum values of B factors of atoms in the group. The column labelled 'Q < 0.9' lists the number of atoms with occupancy less than 0.9.

Mol	Type	Chain	Res	Atoms	RSCC	RSR	B-factors(Å <sup>2</sup> )	Q<0.9
2	NEP	C	11	14/15	0.95	0.14	21,23,34,45	0



### 6.3 Carbohydrates

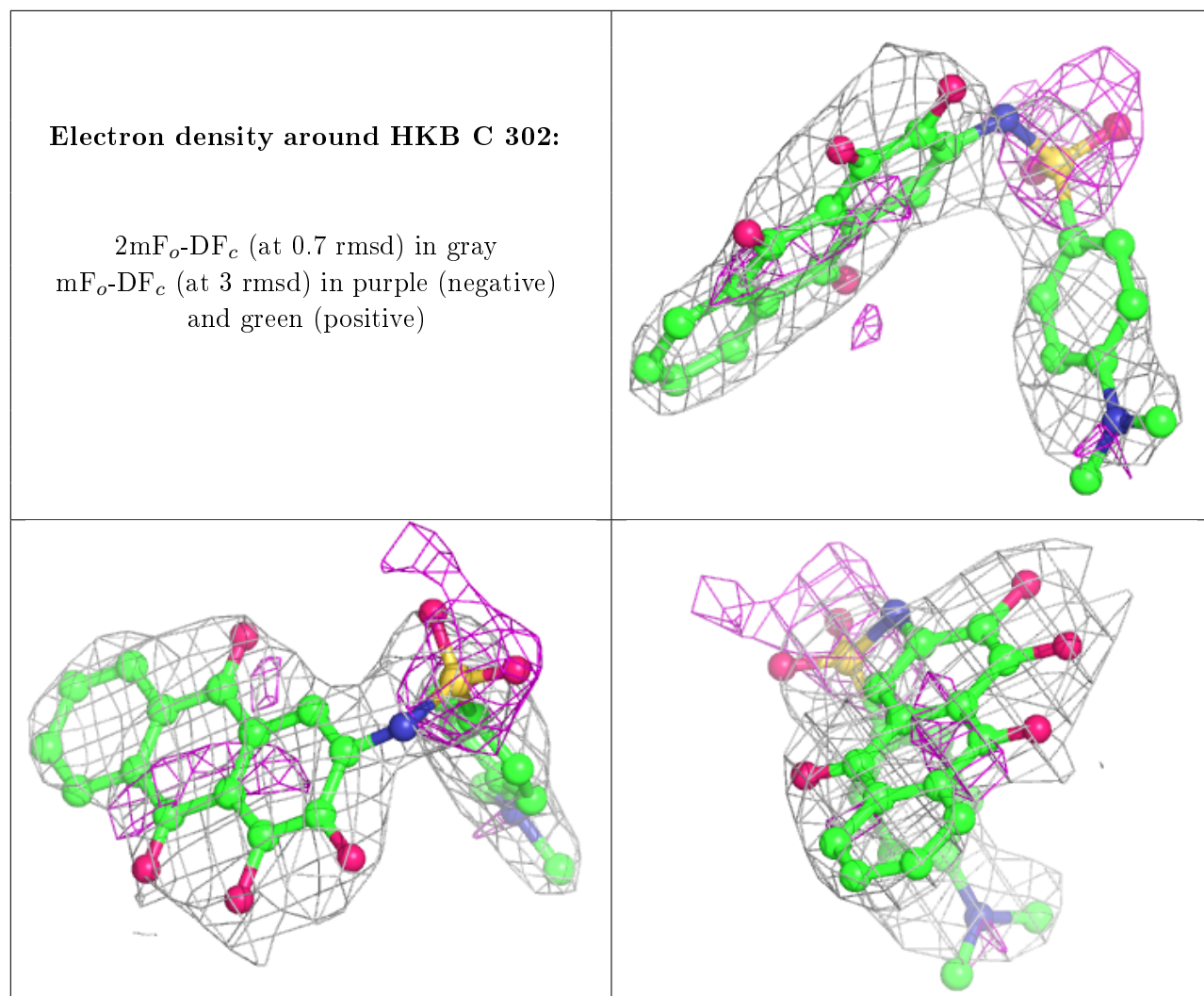
There are no carbohydrates in this entry.

### 6.4 Ligands

In the following table, the Atoms column lists the number of modelled atoms in the group and the number defined in the chemical component dictionary. The B-factors column lists the minimum, median, 95<sup>th</sup> percentile and maximum values of B factors of atoms in the group. The column labelled 'Q< 0.9' lists the number of atoms with occupancy less than 0.9.

Mol	Type	Chain	Res	Atoms	RSCC	RSR	B-factors(Å <sup>2</sup> )	Q<0.9
5	HKB	C	302	31/31	0.84	0.37	38,53,70,80	0
4	MES	C	301	12/12	0.98	0.28	25,43,54,55	0
3	CL	B	301	1/1	1.00	0.12	25,25,25,25	0

The following is a graphical depiction of the model fit to experimental electron density of all instances of the Ligand of Interest. In addition, ligands with molecular weight > 250 and outliers as shown on the geometry validation Tables will also be included. Each fit is shown from different orientation to approximate a three-dimensional view.



## 6.5 Other polymers [i](#)

There are no such residues in this entry.