



# Full wwPDB X-ray Structure Validation Report ⓘ

Feb 28, 2024 – 06:41 PM EST

PDB ID : 5S67  
Title : Tubulin-Z1896597864-complex  
Authors : Muehlethaler, T.; Gioia, D.; Protá, A.E.; Sharpe, M.E.; Cavalli, A.; Steinmetz, M.O.  
Deposited on : 2020-11-08  
Resolution : 2.10 Å(reported)

This is a Full wwPDB X-ray Structure Validation Report for a publicly released PDB entry.

We welcome your comments at [validation@mail.wwpdb.org](mailto:validation@mail.wwpdb.org)

A user guide is available at

<https://www.wwpdb.org/validation/2017/XrayValidationReportHelp>

with specific help available everywhere you see the ⓘ symbol.

The types of validation reports are described at

<http://www.wwpdb.org/validation/2017/FAQs#types>.

---

The following versions of software and data (see [references ⓘ](#)) were used in the production of this report:

MolProbity : 4.02b-467  
Mogul : 1.8.5 (274361), CSD as541be (2020)  
Xtriage (Phenix) : 1.13  
EDS : 2.36  
buster-report : 1.1.7 (2018)  
Percentile statistics : 20191225.v01 (using entries in the PDB archive December 25th 2019)  
Refmac : 5.8.0158  
CCP4 : 7.0.044 (Gargrove)  
Ideal geometry (proteins) : Engh & Huber (2001)  
Ideal geometry (DNA, RNA) : Parkinson et al. (1996)  
Validation Pipeline (wwPDB-VP) : 2.36

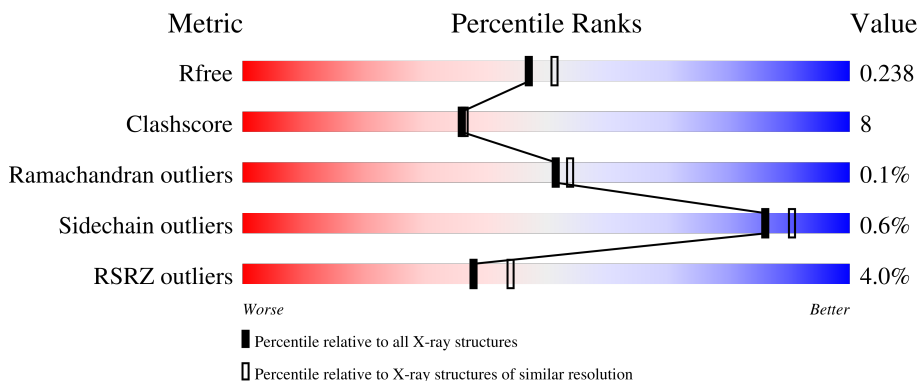
# 1 Overall quality at a glance

The following experimental techniques were used to determine the structure:

*X-RAY DIFFRACTION*

The reported resolution of this entry is 2.10 Å.

Percentile scores (ranging between 0-100) for global validation metrics of the entry are shown in the following graphic. The table shows the number of entries on which the scores are based.



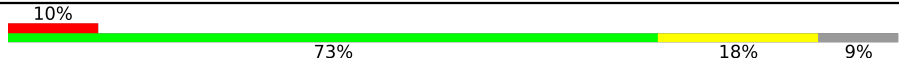
Metric	Whole archive (#Entries)	Similar resolution (#Entries, resolution range(Å))
$R_{free}$	130704	5197 (2.10-2.10)
Clashscore	141614	5710 (2.10-2.10)
Ramachandran outliers	138981	5647 (2.10-2.10)
Sidechain outliers	138945	5648 (2.10-2.10)
RSRZ outliers	127900	5083 (2.10-2.10)

The table below summarises the geometric issues observed across the polymeric chains and their fit to the electron density. The red, orange, yellow and green segments of the lower bar indicate the fraction of residues that contain outliers for  $\geq 3$ , 2, 1 and 0 types of geometric quality criteria respectively. A grey segment represents the fraction of residues that are not modelled. The numeric value for each fraction is indicated below the corresponding segment, with a dot representing fractions  $\leq 5\%$ . The upper red bar (where present) indicates the fraction of residues that have poor fit to the electron density. The numeric value is given above the bar.

Mol	Chain	Length	Quality of chain
1	A	451	 2% 81% 16%
1	C	451	 2% 82% 15%
2	B	445	 2% 77% 18%
2	D	445	 3% 79% 18%
3	E	143	 8% 70% 16% 14%

*Continued on next page...*

*Continued from previous page...*

Mol	Chain	Length	Quality of chain
4	F	384	

The following table lists non-polymeric compounds, carbohydrate monomers and non-standard residues in protein, DNA, RNA chains that are outliers for geometric or electron-density-fit criteria:

Mol	Type	Chain	Res	Chirality	Geometry	Clashes	Electron density
9	MES	B	504	-	-	-	X

## 2 Entry composition i

There are 12 unique types of molecules in this entry. The entry contains 18060 atoms, of which 12 are hydrogens and 0 are deuteriums.

In the tables below, the ZeroOcc column contains the number of atoms modelled with zero occupancy, the AltConf column contains the number of residues with at least one atom in alternate conformation and the Trace column contains the number of residues modelled with at most 2 atoms.

- Molecule 1 is a protein called Tubulin alpha-1B chain.

Mol	Chain	Residues	Atoms					ZeroOcc	AltConf	Trace
			Total	C	N	O	S			
1	A	438	Total	C	N	O	S	0	0	0
			3424	2167	582	653	22			
1	C	440	Total	C	N	O	S	0	1	0
			3443	2178	585	657	23			

- Molecule 2 is a protein called Tubulin beta-2B chain.

Mol	Chain	Residues	Atoms					ZeroOcc	AltConf	Trace
			Total	C	N	O	S			
2	B	425	Total	C	N	O	S	1	1	0
			3359	2109	577	646	27			
2	D	428	Total	C	N	O	S	5	0	0
			3353	2104	572	650	27			

- Molecule 3 is a protein called Stathmin-4.

Mol	Chain	Residues	Atoms					ZeroOcc	AltConf	Trace
			Total	C	N	O	S			
3	E	123	Total	C	N	O	S	0	0	0
			1014	625	183	201	5			

There are 2 discrepancies between the modelled and reference sequences:

Chain	Residue	Modelled	Actual	Comment	Reference
E	3	MET	-	initiating methionine	UNP P63043
E	4	ALA	-	expression tag	UNP P63043

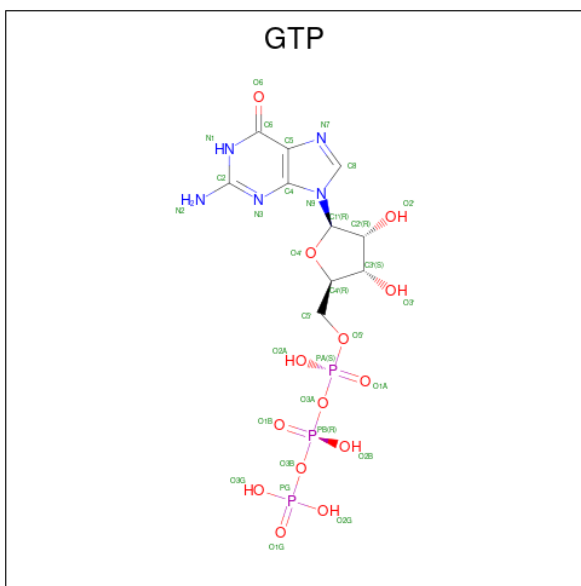
- Molecule 4 is a protein called Tubulin-Tyrosine Ligase.

Mol	Chain	Residues	Atoms					ZeroOcc	AltConf	Trace
			Total	C	N	O	S			
4	F	349	Total	C	N	O	S	0	0	0
			2863	1835	492	522	14			

There are 6 discrepancies between the modelled and reference sequences:

Chain	Residue	Modelled	Actual	Comment	Reference
F	379	HIS	-	expression tag	UNP E1BQ43
F	380	HIS	-	expression tag	UNP E1BQ43
F	381	HIS	-	expression tag	UNP E1BQ43
F	382	HIS	-	expression tag	UNP E1BQ43
F	383	HIS	-	expression tag	UNP E1BQ43
F	384	HIS	-	expression tag	UNP E1BQ43

- Molecule 5 is GUANOSINE-5'-TRIPHOSPHATE (three-letter code: GTP) (formula:  $C_{10}H_{16}N_5O_{14}P_3$ ).



Mol	Chain	Residues	Atoms					ZeroOcc	AltConf
			Total	C	N	O	P		
5	A	1	Total	C	N	O	P	0	0
			32	10	5	14	3		
5	C	1	Total	C	N	O	P	0	0
			32	10	5	14	3		

- Molecule 6 is MAGNESIUM ION (three-letter code: MG) (formula: Mg).

Mol	Chain	Residues	Atoms		ZeroOcc	AltConf
			Total	Mg		
6	A	1	Total	Mg	0	0
			1	1		
6	B	1	Total	Mg	0	0
			1	1		
6	C	1	Total	Mg	0	0
			1	1		
6	D	1	Total	Mg	0	0
			1	1		

*Continued on next page...*

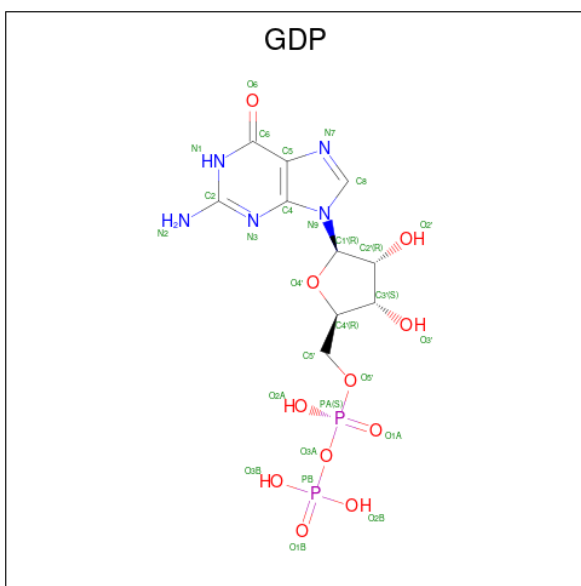
Continued from previous page...

Mol	Chain	Residues	Atoms		ZeroOcc	AltConf
6	F	1	Total	Mg	0	0
			1	1		

- Molecule 7 is CALCIUM ION (three-letter code: CA) (formula: Ca).

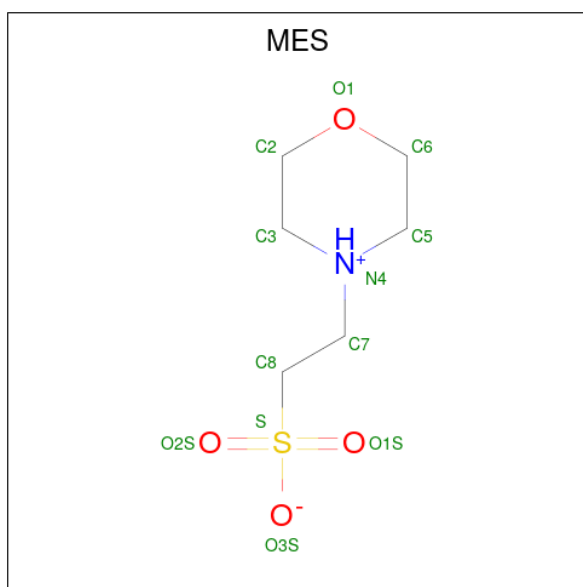
Mol	Chain	Residues	Atoms		ZeroOcc	AltConf
7	A	2	Total	Ca	0	0
			2	2		
7	B	1	Total	Ca	0	0
			1	1		
7	C	1	Total	Ca	0	0
			1	1		

- Molecule 8 is GUANOSINE-5'-DIPHOSPHATE (three-letter code: GDP) (formula: C<sub>10</sub>H<sub>15</sub>N<sub>5</sub>O<sub>11</sub>P<sub>2</sub>).



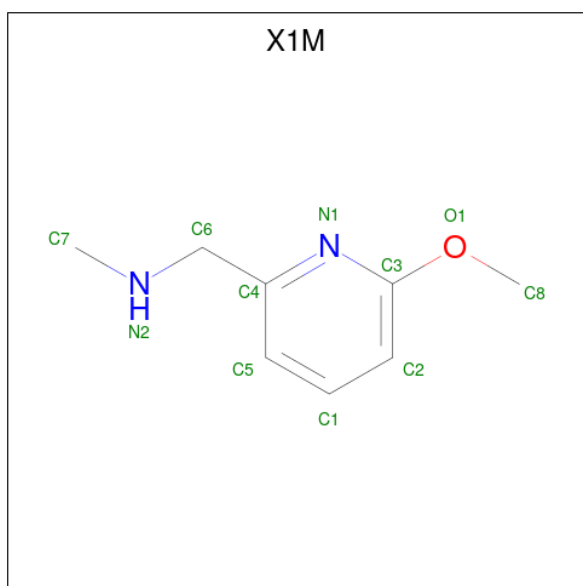
Mol	Chain	Residues	Atoms					ZeroOcc	AltConf
8	B	1	Total	C	N	O	P	0	0
			28	10	5	11	2		
8	D	1	Total	C	N	O	P	0	0
			28	10	5	11	2		

- Molecule 9 is 2-(N-MORPHOLINO)-ETHANESULFONIC ACID (three-letter code: MES) (formula: C<sub>6</sub>H<sub>13</sub>NO<sub>4</sub>S).



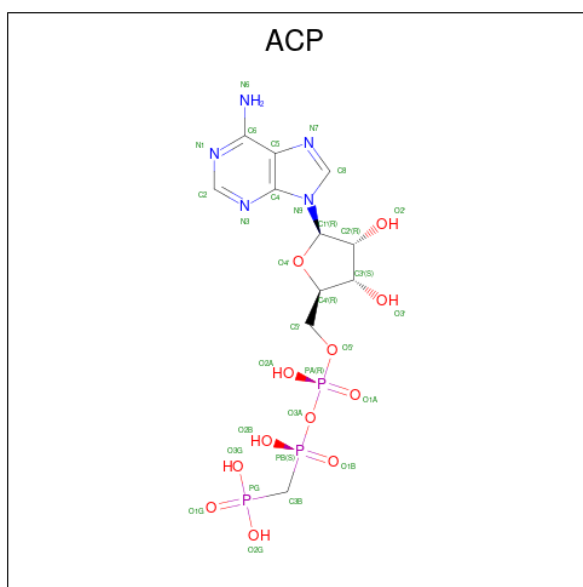
Mol	Chain	Residues	Atoms					ZeroOcc	AltConf
			Total	C	N	O	S		
9	B	1	12	6	1	4	1	0	0

- Molecule 10 is 1-(6-methoxypyridin-2-yl)-N-methylmethanamine (three-letter code: X1M) (formula: C<sub>8</sub>H<sub>12</sub>N<sub>2</sub>O) (labeled as "Ligand of Interest" by depositor).



Mol	Chain	Residues	Atoms					ZeroOcc	AltConf
			Total	C	H	N	O		
10	E	1	23	8	12	2	1	0	0

- Molecule 11 is PHOSPHOMETHYLPHOSPHONIC ACID ADENYLATE ESTER (three-letter code: ACP) (formula: C<sub>11</sub>H<sub>18</sub>N<sub>5</sub>O<sub>12</sub>P<sub>3</sub>).



Mol	Chain	Residues	Atoms					ZeroOcc	AltConf
			Total	C	N	O	P		
11	F	1	31	11	5	12	3	0	0

- Molecule 12 is water.

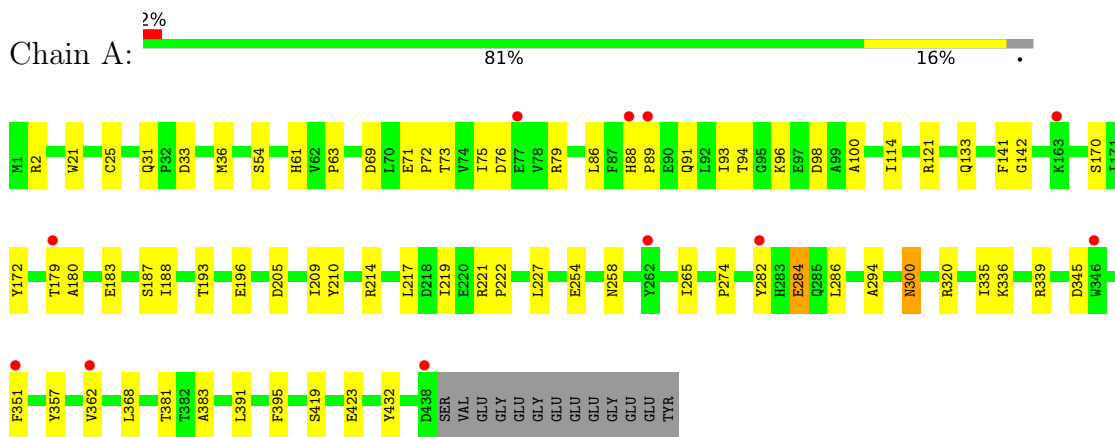
Mol	Chain	Residues	Atoms		ZeroOcc	AltConf
12	A	74	Total	O	0	0
			74	74		
12	B	78	Total	O	0	0
			78	78		
12	C	193	Total	O	0	0
			193	193		
12	D	34	Total	O	0	0
			34	34		
12	E	12	Total	O	0	0
			12	12		
12	F	18	Total	O	0	0
			18	18		



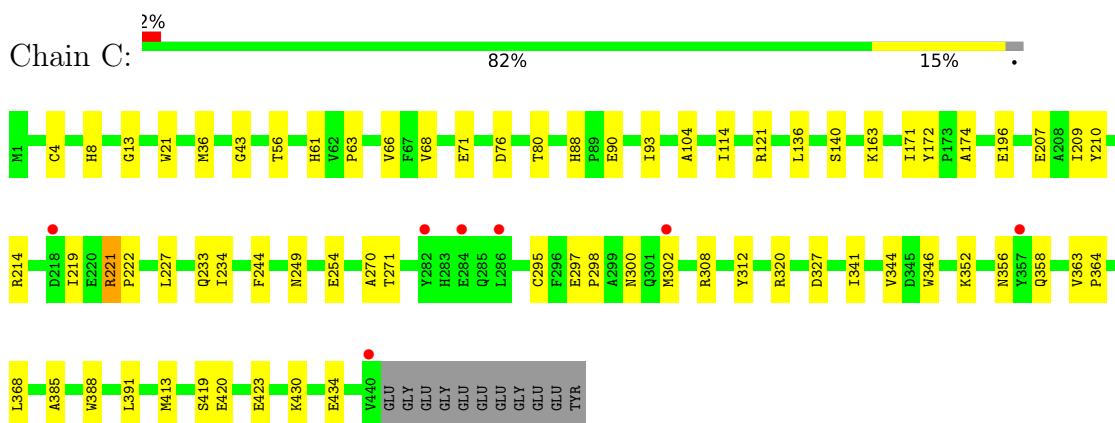
### 3 Residue-property plots [i](#)

These plots are drawn for all protein, RNA, DNA and oligosaccharide chains in the entry. The first graphic for a chain summarises the proportions of the various outlier classes displayed in the second graphic. The second graphic shows the sequence view annotated by issues in geometry and electron density. Residues are color-coded according to the number of geometric quality criteria for which they contain at least one outlier: green = 0, yellow = 1, orange = 2 and red = 3 or more. A red dot above a residue indicates a poor fit to the electron density ( $RSRZ > 2$ ). Stretches of 2 or more consecutive residues without any outlier are shown as a green connector. Residues present in the sample, but not in the model, are shown in grey.

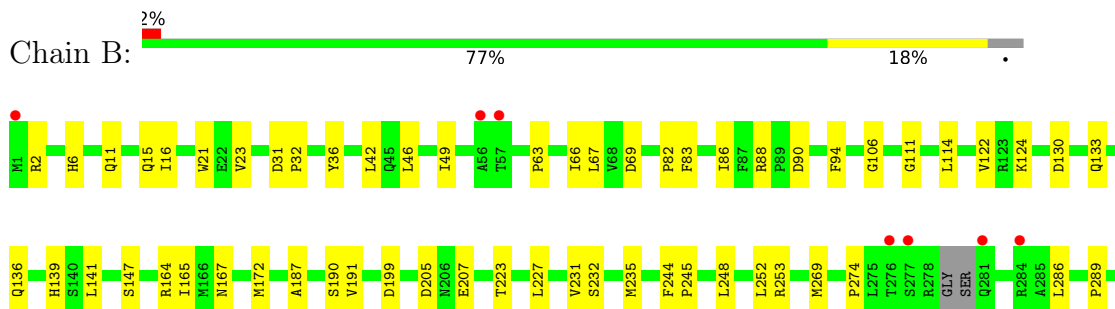
- Molecule 1: Tubulin alpha-1B chain

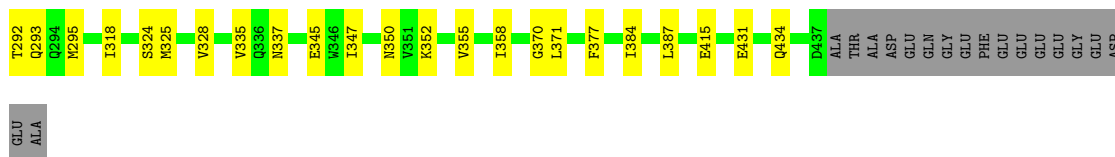


- Molecule 1: Tubulin alpha-1B chain

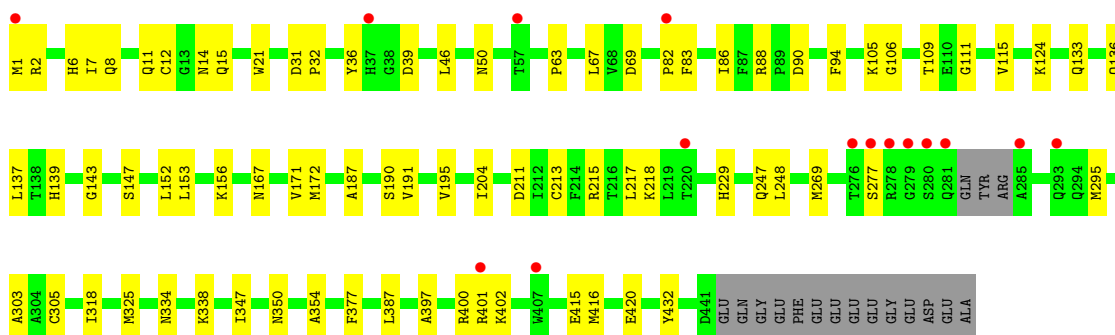
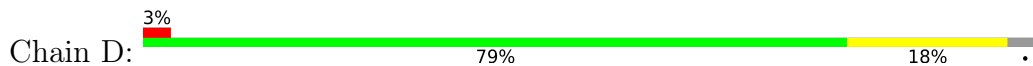


- Molecule 2: Tubulin beta-2B chain

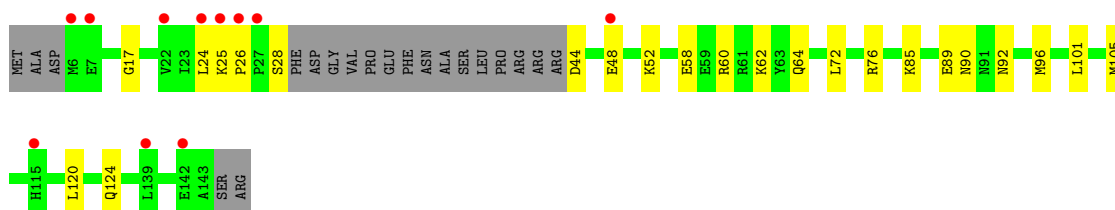




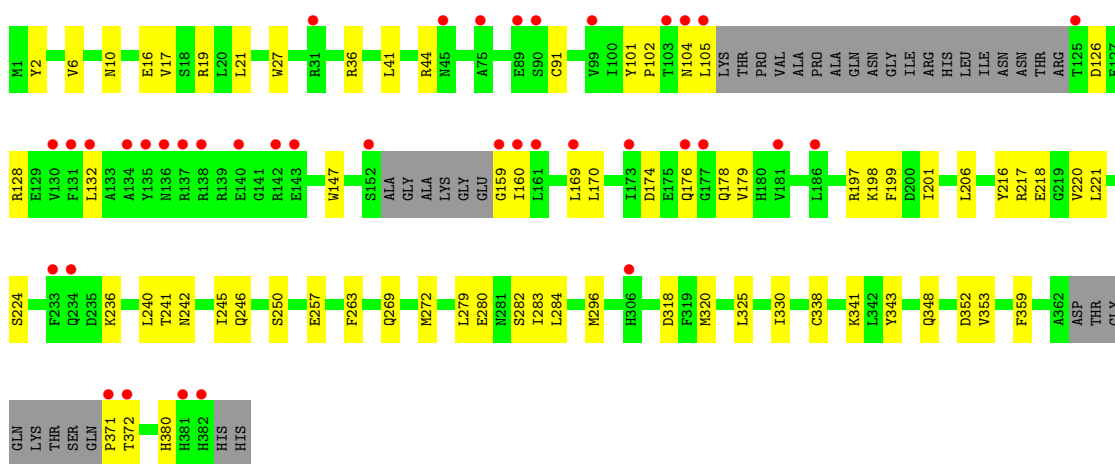
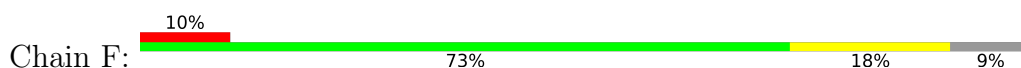
• Molecule 2: Tubulin beta-2B chain



• Molecule 3: Stathmin-4



• Molecule 4: Tubulin-Tyrosine Ligase



## 4 Data and refinement statistics

Property	Value	Source
Space group	P 21 21 21	Depositor
Cell constants a, b, c, $\alpha$ , $\beta$ , $\gamma$	104.90Å 158.96Å 179.98Å 90.00° 90.00° 90.00°	Depositor
Resolution (Å)	62.75 – 2.10 119.14 – 2.10	Depositor EDS
% Data completeness (in resolution range)	98.3 (62.75-2.10) 98.4 (119.14-2.10)	Depositor EDS
$R_{merge}$	0.09	Depositor
$R_{sym}$	(Not available)	Depositor
$\langle I/\sigma(I) \rangle$ <sup>1</sup>	1.09 (at 2.10Å)	Xtrriage
Refinement program	PHENIX 1.18.2_3874	Depositor
R, $R_{free}$	0.210 , 0.238 0.211 , 0.238	Depositor DCC
$R_{free}$ test set	8544 reflections (4.95%)	wwPDB-VP
Wilson B-factor (Å <sup>2</sup> )	52.4	Xtrriage
Anisotropy	0.206	Xtrriage
Bulk solvent $k_{sol}$ (e/Å <sup>3</sup> ), $B_{sol}$ (Å <sup>2</sup> )	0.32 , 49.7	EDS
L-test for twinning <sup>2</sup>	$\langle  L  \rangle = 0.50$ , $\langle L^2 \rangle = 0.34$	Xtrriage
Estimated twinning fraction	No twinning to report.	Xtrriage
$F_o, F_c$ correlation	0.96	EDS
Total number of atoms	18060	wwPDB-VP
Average B, all atoms (Å <sup>2</sup> )	69.0	wwPDB-VP

Xtrriage's analysis on translational NCS is as follows: *The largest off-origin peak in the Patterson function is 2.41% of the height of the origin peak. No significant pseudotranslation is detected.*

<sup>1</sup>Intensities estimated from amplitudes.

<sup>2</sup>Theoretical values of  $\langle |L| \rangle$ ,  $\langle L^2 \rangle$  for acentric reflections are 0.5, 0.333 respectively for untwinned datasets, and 0.375, 0.2 for perfectly twinned datasets.

## 5 Model quality [i](#)

### 5.1 Standard geometry [i](#)

Bond lengths and bond angles in the following residue types are not validated in this section: GTP, CA, ACP, MG, MES, X1M, GDP

The Z score for a bond length (or angle) is the number of standard deviations the observed value is removed from the expected value. A bond length (or angle) with  $|Z| > 5$  is considered an outlier worth inspection. RMSZ is the root-mean-square of all Z scores of the bond lengths (or angles).

Mol	Chain	Bond lengths		Bond angles	
		RMSZ	# Z  >5	RMSZ	# Z  >5
1	A	0.25	0/3502	0.42	0/4754
1	C	0.26	0/3521	0.44	0/4780
2	B	0.25	0/3433	0.42	0/4647
2	D	0.25	0/3426	0.41	0/4640
3	E	0.24	0/1022	0.35	0/1356
4	F	0.24	0/2930	0.40	0/3959
All	All	0.25	0/17834	0.42	0/24136

There are no bond length outliers.

There are no bond angle outliers.

There are no chirality outliers.

There are no planarity outliers.

### 5.2 Too-close contacts [i](#)

In the following table, the Non-H and H(model) columns list the number of non-hydrogen atoms and hydrogen atoms in the chain respectively. The H(added) column lists the number of hydrogen atoms added and optimized by MolProbity. The Clashes column lists the number of clashes within the asymmetric unit, whereas Symm-Clashes lists symmetry-related clashes.

Mol	Chain	Non-H	H(model)	H(added)	Clashes	Symm-Clashes
1	A	3424	0	3334	56	0
1	C	3443	0	3352	49	0
2	B	3359	0	3235	60	0
2	D	3353	0	3229	53	0
3	E	1014	0	1029	16	0
4	F	2863	0	2826	54	0
5	A	32	0	12	1	0

*Continued on next page...*

Continued from previous page...

Mol	Chain	Non-H	H(model)	H(added)	Clashes	Symm-Clashes
5	C	32	0	12	0	0
6	A	1	0	0	0	0
6	B	1	0	0	0	0
6	C	1	0	0	0	0
6	D	1	0	0	0	0
6	F	1	0	0	0	0
7	A	2	0	0	0	0
7	B	1	0	0	0	0
7	C	1	0	0	0	0
8	B	28	0	12	0	0
8	D	28	0	12	2	0
9	B	12	0	12	4	0
10	E	11	12	0	0	0
11	F	31	0	14	2	0
12	A	74	0	0	4	0
12	B	78	0	0	1	0
12	C	193	0	0	3	0
12	D	34	0	0	2	0
12	E	12	0	0	2	0
12	F	18	0	0	1	0
All	All	18048	12	17079	277	0

The all-atom clashscore is defined as the number of clashes found per 1000 atoms (including hydrogen atoms). The all-atom clashscore for this structure is 8.

All (277) close contacts within the same asymmetric unit are listed below, sorted by their clash magnitude.

Atom-1	Atom-2	Interatomic distance (Å)	Clash overlap (Å)
4:F:102:PRO:HG2	4:F:105:LEU:HD13	1.48	0.93
1:C:221:ARG:HG3	2:D:325:MET:HG2	1.52	0.92
2:D:295:MET:HE2	2:D:377:PHE:HB2	1.52	0.91
1:A:335:ILE:HG23	1:A:339:ARG:HG3	1.52	0.91
2:D:217:LEU:HA	2:D:277:SER:HB3	1.53	0.89
4:F:236:LYS:HB3	4:F:240:LEU:HD13	1.57	0.87
1:A:381:THR:HG22	1:A:383:ALA:H	1.42	0.85
1:C:234:ILE:HD13	1:C:302:MET:CE	2.11	0.80
4:F:318:ASP:OD2	11:F:401:ACP:O2G	2.01	0.79
1:C:209:ILE:HD11	1:C:302:MET:CE	2.12	0.78
2:D:334:ASN:HD21	2:D:338:LYS:HE3	1.47	0.78
1:C:93:ILE:HD11	1:C:121:ARG:HG3	1.66	0.76
2:B:147:SER:HG	2:B:190:SER:HG	1.24	0.76

Continued on next page...

*Continued from previous page...*

Atom-1	Atom-2	Interatomic distance (Å)	Clash overlap (Å)
2:B:83:PHE:O	2:B:86:ILE:HG22	1.86	0.75
2:D:397:ALA:O	2:D:401:ARG:NH1	2.19	0.75
4:F:197:ARG:NH1	4:F:257:GLU:OE2	2.19	0.75
2:D:136:GLN:HA	2:D:167:ASN:O	1.87	0.74
1:C:234:ILE:HD13	1:C:302:MET:HE1	1.72	0.72
4:F:269:GLN:HA	4:F:272:MET:HE2	1.71	0.71
4:F:10:ASN:HB2	4:F:44:ARG:HH22	1.55	0.71
1:C:327:ASP:OD2	12:C:601:HOH:O	2.07	0.70
2:B:88:ARG:HH11	2:B:90:ASP:HB2	1.54	0.70
1:C:76:ASP:O	1:C:80:THR:HG22	1.92	0.70
1:C:4[A]:CYS:SG	1:C:136:LEU:HG	2.32	0.70
4:F:132:LEU:HD21	4:F:170:LEU:HD11	1.73	0.69
2:B:274:PRO:HB3	2:B:286:LEU:HD22	1.75	0.69
2:D:269:MET:HG3	2:D:303:ALA:HB3	1.75	0.68
4:F:241:THR:OG1	11:F:401:ACP:O3'	2.11	0.68
3:E:85:LYS:O	3:E:89:GLU:HG3	1.93	0.67
1:C:209:ILE:HD11	1:C:302:MET:HE3	1.77	0.67
2:D:397:ALA:HA	2:D:400:ARG:NH1	2.10	0.66
4:F:128:ARG:NH2	4:F:174:ASP:OD1	2.30	0.65
2:D:334:ASN:ND2	2:D:338:LYS:HE3	2.12	0.65
3:E:44:ASP:OD2	12:E:701:HOH:O	2.15	0.64
2:B:164:ARG:O	9:B:504:MES:H31	1.97	0.64
3:E:85:LYS:NZ	12:E:702:HOH:O	2.31	0.64
1:A:179:THR:HA	2:B:352:LYS:HD2	1.80	0.64
2:B:16:ILE:HD13	2:B:231:VAL:HG11	1.80	0.64
2:D:69:ASP:O	2:D:94:PHE:HA	1.98	0.63
1:A:71:GLU:OE2	1:A:73:THR:OG1	2.14	0.62
1:C:419:SER:O	1:C:423:GLU:HG3	1.99	0.62
2:D:2:ARG:HB3	2:D:133:GLN:HG2	1.81	0.62
2:D:432:TYR:OH	12:D:601:HOH:O	2.15	0.62
4:F:91:CYS:HA	12:F:516:HOH:O	1.98	0.62
1:A:142:GLY:HA3	1:A:183:GLU:OE2	1.99	0.62
4:F:102:PRO:HG2	4:F:105:LEU:CD1	2.25	0.62
4:F:371:PRO:HA	4:F:372:THR:O	2.00	0.62
2:D:11:GLN:O	2:D:15:GLN:HG2	2.01	0.61
1:A:294:ALA:O	1:A:300:ASN:ND2	2.32	0.61
1:C:312:TYR:CD1	1:C:341:ILE:HG23	2.36	0.61
1:C:270:ALA:O	1:C:302:MET:HG2	2.00	0.61
1:A:21:TRP:CZ3	1:A:63:PRO:HB3	2.36	0.60
2:B:274:PRO:HB3	2:B:286:LEU:CD2	2.30	0.60
2:B:88:ARG:NH1	2:B:90:ASP:HB2	2.14	0.60

*Continued on next page...*

*Continued from previous page...*

Atom-1	Atom-2	Interatomic distance (Å)	Clash overlap (Å)
2:B:136:GLN:HA	2:B:167:ASN:O	2.01	0.60
2:B:172:MET:HG3	2:B:387:LEU:HD11	1.83	0.60
3:E:92:ASN:O	3:E:96:MET:HG2	2.01	0.60
1:C:172:TYR:CE2	1:C:391:LEU:HD22	2.37	0.59
2:D:106:GLY:O	2:D:111:GLY:HA3	2.02	0.59
2:D:21:TRP:CZ3	2:D:63:PRO:HB3	2.37	0.59
4:F:269:GLN:HA	4:F:272:MET:CE	2.32	0.59
2:D:215:ARG:O	2:D:218:LYS:HE3	2.03	0.59
2:D:83:PHE:O	2:D:86:ILE:HG22	2.03	0.58
2:D:2:ARG:NH1	12:D:602:HOH:O	2.29	0.58
4:F:371:PRO:CA	4:F:372:THR:HB	2.33	0.58
4:F:371:PRO:HA	4:F:372:THR:HB	1.85	0.58
1:C:320:ARG:HA	1:C:356:ASN:O	2.04	0.57
1:A:284:GLU:CD	1:A:284:GLU:H	2.08	0.57
2:B:42:LEU:H	2:B:42:LEU:HD12	1.69	0.57
2:B:431:GLU:O	2:B:434:GLN:HG2	2.04	0.57
2:D:1:MET:HG3	2:D:50:ASN:HB2	1.85	0.56
2:B:69:ASP:O	2:B:94:PHE:HA	2.05	0.56
1:A:217:LEU:HD21	1:A:368:LEU:HD23	1.86	0.56
3:E:120:LEU:O	3:E:124:GLN:HG3	2.04	0.56
1:C:209:ILE:HD11	1:C:302:MET:HE1	1.86	0.56
2:D:152:LEU:O	2:D:156:LYS:HG2	2.06	0.56
2:D:171:VAL:HA	2:D:204:ILE:O	2.05	0.56
2:B:231:VAL:O	2:B:235:MET:HG3	2.06	0.55
4:F:246:GLN:O	4:F:250:SER:HB3	2.06	0.55
4:F:101:TYR:N	4:F:126:ASP:OD1	2.23	0.55
4:F:159:GLY:C	4:F:160:ILE:HD12	2.27	0.55
4:F:371:PRO:HA	4:F:372:THR:C	2.25	0.55
2:B:292:THR:HG22	2:B:335:VAL:HG21	1.89	0.55
1:C:420:GLU:OE1	12:C:602:HOH:O	2.18	0.55
2:B:244:PHE:CE1	2:B:358:ILE:HD12	2.42	0.54
2:B:295:MET:CG	2:B:377:PHE:HB2	2.37	0.54
2:B:324:SER:O	2:B:328:VAL:HG23	2.07	0.54
2:B:253[A]:ARG:NH1	9:B:504:MES:O2S	2.41	0.54
1:A:196:GLU:OE1	1:A:196:GLU:HA	2.08	0.54
1:C:270:ALA:HB3	1:C:302:MET:HG3	1.90	0.54
4:F:282:SER:HB2	4:F:325:LEU:HD13	1.90	0.53
3:E:60:ARG:O	3:E:64:GLN:HG3	2.08	0.53
1:A:172:TYR:HB3	1:A:205:ASP:HA	1.90	0.53
4:F:296:MET:SD	4:F:380:HIS:HB2	2.49	0.53
1:A:320:ARG:HD2	12:A:660:HOH:O	2.09	0.53

*Continued on next page...*

*Continued from previous page...*

Atom-1	Atom-2	Interatomic distance (Å)	Clash overlap (Å)
2:B:141:LEU:HD12	2:B:172:MET:SD	2.49	0.53
1:C:93:ILE:CD1	1:C:121:ARG:HG3	2.37	0.53
1:A:188:ILE:HD12	1:A:395:PHE:HB2	1.90	0.52
2:B:205:ASP:OD1	2:B:207:GLU:N	2.38	0.52
2:D:21:TRP:CE3	2:D:63:PRO:HB3	2.44	0.52
4:F:320:MET:HG3	4:F:330:ILE:HD11	1.91	0.52
4:F:16:GLU:OE2	4:F:19:ARG:NH2	2.39	0.52
2:D:172:MET:HG3	2:D:387:LEU:HD11	1.92	0.51
4:F:242:ASN:HD22	4:F:245:ILE:HD12	1.75	0.51
1:A:214:ARG:HG2	1:A:219:ILE:O	2.11	0.51
2:D:191:VAL:O	2:D:195:VAL:HG23	2.11	0.51
4:F:216:TYR:CE2	4:F:218:GLU:HB2	2.45	0.51
3:E:72:LEU:O	3:E:76:ARG:HG2	2.10	0.51
1:A:335:ILE:CG2	1:A:339:ARG:HG3	2.34	0.51
2:B:370:GLY:O	2:B:371:LEU:HD23	2.11	0.51
4:F:17:VAL:O	4:F:21:LEU:HG	2.11	0.51
1:A:69:ASP:O	1:A:94:THR:HA	2.11	0.51
1:C:196:GLU:HG2	12:C:647:HOH:O	2.09	0.51
2:D:1:MET:HG3	2:D:50:ASN:CB	2.41	0.51
4:F:2:TYR:CE1	4:F:359:PHE:HB3	2.46	0.51
2:B:2:ARG:HB2	2:B:133:GLN:CG	2.40	0.50
1:A:209:ILE:HG22	1:A:227:LEU:HD22	1.92	0.50
2:B:106:GLY:O	2:B:111:GLY:HA3	2.10	0.50
2:B:244:PHE:HB3	2:B:245:PRO:HD2	1.93	0.50
1:C:209:ILE:HG22	1:C:227:LEU:HD22	1.94	0.50
1:C:430:LYS:HE2	1:C:434:GLU:OE2	2.12	0.50
2:B:124:LYS:HD3	2:B:124:LYS:C	2.32	0.50
1:C:298:PRO:HG2	1:C:308:ARG:NH2	2.27	0.50
1:A:362:VAL:HG22	12:A:610:HOH:O	2.11	0.49
1:C:297:GLU:HB3	1:C:300:ASN:HD22	1.77	0.49
4:F:320:MET:CG	4:F:330:ILE:HD11	2.42	0.49
1:C:244:PHE:CD1	1:C:358:GLN:HG2	2.47	0.49
2:D:2:ARG:HB3	2:D:133:GLN:CG	2.42	0.49
1:A:88:HIS:CD2	1:A:91:GLN:HG3	2.47	0.49
1:A:179:THR:HG21	2:B:248:LEU:CB	2.42	0.49
2:D:211:ASP:O	2:D:215:ARG:HB2	2.12	0.49
1:A:2:ARG:HB2	1:A:133:GLN:HE21	1.78	0.49
4:F:348:GLN:NE2	4:F:352:ASP:OD1	2.46	0.49
1:A:36:MET:HB3	1:A:61:HIS:CE1	2.48	0.48
2:B:46:LEU:HA	2:B:49:ILE:HB	1.96	0.48
1:C:104:ALA:HB2	1:C:413:MET:SD	2.53	0.48

*Continued on next page...*



*Continued from previous page...*

Atom-1	Atom-2	Interatomic distance (Å)	Clash overlap (Å)
1:A:265:ILE:HG23	1:A:432:TYR:CE1	2.49	0.48
1:A:300:ASN:HB3	12:A:601:HOH:O	2.13	0.48
3:E:48:GLU:HG2	3:E:52:LYS:HE3	1.96	0.48
2:D:124:LYS:C	2:D:124:LYS:HD3	2.34	0.48
1:A:193:THR:HG23	12:A:644:HOH:O	2.13	0.48
2:D:213:CYS:HA	2:D:217:LEU:HB2	1.96	0.48
1:A:71:GLU:HG2	1:A:72:PRO:HD2	1.96	0.47
2:B:31:ASP:HB2	2:B:32:PRO:CD	2.44	0.47
2:B:36:TYR:CD1	2:B:46:LEU:HD21	2.49	0.47
2:B:318:ILE:N	2:B:318:ILE:HD12	2.28	0.47
2:B:199:ASP:OD1	9:B:504:MES:H62	2.14	0.47
1:C:271:THR:HG21	1:C:295:CYS:O	2.13	0.47
3:E:101:LEU:O	3:E:105:MET:HG2	2.13	0.47
1:A:88:HIS:HB2	1:A:89:PRO:HD2	1.96	0.47
2:D:143:GLY:HA3	8:D:501:GDP:O3A	2.14	0.47
2:B:415:GLU:HG3	12:B:660:HOH:O	2.15	0.47
2:D:12:CYS:HB2	8:D:501:GDP:C8	2.50	0.47
1:A:335:ILE:HG23	1:A:339:ARG:CG	2.36	0.47
3:E:58:GLU:HG2	3:E:62:LYS:HE3	1.96	0.47
2:B:337:ASN:OD1	4:F:36:ARG:HD3	2.15	0.47
1:A:141:PHE:CE1	1:A:170:SER:HB3	2.50	0.46
2:B:2:ARG:HB2	2:B:133:GLN:HE21	1.80	0.46
2:B:11:GLN:O	2:B:15:GLN:HG3	2.15	0.46
2:B:295:MET:HG2	2:B:377:PHE:HB2	1.98	0.46
2:D:1:MET:CE	2:D:50:ASN:HB2	2.44	0.46
2:D:318:ILE:N	2:D:318:ILE:HD12	2.30	0.46
1:A:100:ALA:HB1	2:B:253[B]:ARG:HG2	1.97	0.46
2:D:402:LYS:HE2	2:D:415:GLU:OE1	2.14	0.46
1:A:210:TYR:CE1	1:A:222:PRO:HD2	2.50	0.46
2:B:223:THR:O	2:B:227:LEU:HD13	2.15	0.46
1:A:98:ASP:HB2	5:A:501:GTP:O2G	2.16	0.46
2:B:114:LEU:O	2:B:114:LEU:HG	2.15	0.46
4:F:147:TRP:HB2	4:F:169:LEU:HD11	1.97	0.46
1:C:66:VAL:HG12	1:C:68:VAL:HG23	1.97	0.46
1:C:249:ASN:OD1	1:C:356:ASN:ND2	2.43	0.46
2:D:347:ILE:HG22	2:D:350:ASN:HB3	1.98	0.46
1:A:419:SER:O	1:A:423:GLU:HG3	2.16	0.46
1:A:71:GLU:HG2	1:A:72:PRO:N	2.31	0.45
4:F:6:VAL:HG22	4:F:41:LEU:HD12	1.98	0.45
4:F:280:GLU:OE1	4:F:284:LEU:HD23	2.15	0.45
1:C:21:TRP:CZ3	1:C:63:PRO:HB3	2.51	0.45

*Continued on next page...*

*Continued from previous page...*

Atom-1	Atom-2	Interatomic distance (Å)	Clash overlap (Å)
3:E:25:LYS:HG2	3:E:26:PRO:HD2	1.99	0.45
2:B:289:PRO:O	2:B:293:GLN:HG3	2.17	0.45
1:C:210:TYR:CZ	1:C:222:PRO:HD2	2.51	0.45
4:F:217:ARG:HG3	4:F:218:GLU:HG2	1.99	0.45
1:C:214:ARG:HG2	1:C:219:ILE:O	2.16	0.45
2:D:115:VAL:HG23	2:D:153:LEU:HD23	1.98	0.45
1:C:43:GLY:HA2	1:C:56:THR:O	2.17	0.45
2:B:42:LEU:HD12	2:B:42:LEU:N	2.31	0.45
2:D:187:ALA:O	2:D:191:VAL:HG23	2.17	0.45
1:A:76:ASP:OD1	1:A:79:ARG:NH1	2.50	0.44
1:C:254:GLU:HG2	1:C:352:LYS:HE2	1.99	0.44
4:F:201:ILE:HG12	4:F:221:LEU:HG	1.99	0.44
1:A:336:LYS:HG3	3:E:24:LEU:HD13	1.99	0.44
2:B:23:VAL:HG21	2:B:232:SER:HB3	2.00	0.44
1:C:8:HIS:HB3	1:C:13:GLY:O	2.17	0.44
1:A:351:PHE:HE1	3:E:24:LEU:HD11	1.82	0.44
4:F:126:ASP:OD2	4:F:128:ARG:HG3	2.17	0.44
4:F:176:GLN:HB3	4:F:178:GLN:NE2	2.33	0.44
1:A:25:CYS:SG	1:A:86:LEU:HD11	2.57	0.44
2:D:387:LEU:HD23	2:D:387:LEU:C	2.38	0.44
4:F:236:LYS:HB3	4:F:240:LEU:CD1	2.38	0.44
2:B:2:ARG:HB2	2:B:133:GLN:NE2	2.33	0.44
1:A:210:TYR:CZ	1:A:222:PRO:HD2	2.52	0.44
4:F:2:TYR:HB2	4:F:27:TRP:CD2	2.51	0.44
4:F:216:TYR:CZ	4:F:218:GLU:HB2	2.52	0.44
1:A:254:GLU:HG2	1:A:258:ASN:ND2	2.33	0.44
1:A:345:ASP:HB3	3:E:28:SER:HB2	1.98	0.44
1:C:363:VAL:HG13	1:C:364:PRO:HD2	1.99	0.44
2:D:6:HIS:CD2	2:D:21:TRP:HE1	2.36	0.44
1:A:93:ILE:HD11	1:A:121:ARG:HG3	2.00	0.43
2:B:187:ALA:O	2:B:191:VAL:HG23	2.18	0.43
2:B:269:MET:HG2	2:B:384:ILE:HD13	1.99	0.43
4:F:220:VAL:HG12	4:F:263:PHE:CE1	2.54	0.43
1:A:31:GLN:HB2	1:A:33:ASP:OD1	2.18	0.43
1:C:93:ILE:HG22	1:C:114:ILE:HD11	2.01	0.43
2:D:31:ASP:HB2	2:D:32:PRO:CD	2.48	0.43
2:B:66:ILE:HD12	2:B:122:VAL:HG22	2.00	0.43
1:A:357:TYR:CE2	3:E:17:GLY:HA2	2.53	0.43
2:D:248:LEU:HD23	2:D:354:ALA:HB2	2.01	0.43
2:D:416:MET:O	2:D:420:GLU:HG3	2.18	0.43
1:A:75:ILE:HD12	1:A:94:THR:HG22	2.01	0.43

*Continued on next page...*

*Continued from previous page...*

Atom-1	Atom-2	Interatomic distance (Å)	Clash overlap (Å)
2:B:67:LEU:N	2:B:67:LEU:HD12	2.34	0.43
2:D:67:LEU:N	2:D:67:LEU:HD12	2.33	0.43
2:D:105:LYS:HA	2:D:109:THR:HB	2.00	0.43
1:A:54:SER:O	1:A:61:HIS:HA	2.18	0.43
1:A:274:PRO:HB3	1:A:286:LEU:HD12	2.01	0.43
1:C:36:MET:HB3	1:C:61:HIS:CE1	2.54	0.42
4:F:10:ASN:HB2	4:F:44:ARG:NH2	2.30	0.42
2:B:165:ILE:HG21	2:B:252:LEU:HB3	2.01	0.42
2:D:36:TYR:CD1	2:D:46:LEU:HD21	2.54	0.42
4:F:371:PRO:HA	4:F:372:THR:CB	2.47	0.42
1:A:180:ALA:HB3	1:A:183:GLU:HG3	2.00	0.42
1:C:93:ILE:HD11	1:C:121:ARG:CG	2.43	0.42
1:C:391:LEU:HD12	1:C:391:LEU:HA	1.85	0.42
4:F:101:TYR:CD2	4:F:179:VAL:HG22	2.54	0.42
4:F:240:LEU:HD12	4:F:240:LEU:N	2.35	0.42
1:A:100:ALA:CB	2:B:253[B]:ARG:HG2	2.50	0.42
1:C:312:TYR:CE1	1:C:341:ILE:HG23	2.55	0.42
1:C:385:ALA:HA	1:C:388:TRP:CD1	2.55	0.42
1:A:71:GLU:HG2	1:A:72:PRO:CD	2.50	0.42
1:A:114:ILE:O	1:A:114:ILE:HG12	2.20	0.42
2:B:6:HIS:CD2	2:B:21:TRP:HE1	2.38	0.42
2:B:347:ILE:HG22	2:B:350:ASN:HB3	2.01	0.42
4:F:147:TRP:HB2	4:F:169:LEU:CD1	2.49	0.42
4:F:279:LEU:HD12	4:F:283:ILE:HB	2.01	0.41
2:B:387:LEU:C	2:B:387:LEU:HD23	2.40	0.41
2:D:31:ASP:HB2	2:D:32:PRO:HD2	2.01	0.41
4:F:197:ARG:HB2	4:F:224:SER:O	2.20	0.41
2:B:345:GLU:OE1	2:B:345:GLU:N	2.43	0.41
1:C:174:ALA:CB	1:C:207:GLU:HB2	2.51	0.41
1:A:21:TRP:CE3	1:A:63:PRO:HB3	2.55	0.41
4:F:206:LEU:HD23	4:F:353:VAL:CG2	2.51	0.41
4:F:341:LYS:HG2	4:F:341:LYS:O	2.20	0.41
1:A:21:TRP:CH2	1:A:63:PRO:HB3	2.55	0.41
2:B:325:MET:HE2	2:B:355:VAL:HG21	2.02	0.41
1:C:270:ALA:HB3	1:C:302:MET:CG	2.50	0.41
2:D:88:ARG:NH1	2:D:90:ASP:HB2	2.36	0.41
4:F:160:ILE:HD12	4:F:160:ILE:N	2.36	0.41
4:F:198:LYS:HG2	4:F:199:PHE:H	1.85	0.41
9:B:504:MES:H81	9:B:504:MES:H51	1.73	0.41
1:C:233:GLN:HG3	1:C:368:LEU:CD1	2.51	0.41
2:D:147:SER:HB2	2:D:190:SER:OG	2.20	0.41

*Continued on next page...*

Continued from previous page...

Atom-1	Atom-2	Interatomic distance (Å)	Clash overlap (Å)
4:F:338:CYS:HB3	4:F:343:TYR:CE1	2.56	0.41
1:A:96:LYS:NZ	2:B:130:ASP:OD1	2.49	0.41
1:C:88:HIS:HE1	1:C:90:GLU:HG3	1.85	0.41
1:C:174:ALA:HB2	1:C:207:GLU:N	2.36	0.41
2:D:2:ARG:O	2:D:133:GLN:NE2	2.43	0.41
1:C:163:LYS:HG3	3:E:90:ASN:OD1	2.21	0.41
4:F:102:PRO:HB2	4:F:104:ASN:OD1	2.21	0.41
1:C:344:VAL:HG21	1:C:346:TRP:CE2	2.56	0.40
2:D:8:GLN:NE2	2:D:14:ASN:HA	2.36	0.40
1:A:187:SER:HB3	1:A:391:LEU:HD21	2.03	0.40
2:B:21:TRP:CZ3	2:B:63:PRO:HB3	2.56	0.40
2:D:7:ILE:O	2:D:137:LEU:HA	2.21	0.40
2:D:303:ALA:O	2:D:305:CYS:N	2.50	0.40
1:A:75:ILE:HB	1:A:94:THR:CG2	2.51	0.40
2:B:31:ASP:HB2	2:B:32:PRO:HD2	2.03	0.40
2:B:384:ILE:HD12	2:B:384:ILE:HA	1.95	0.40
1:C:140:SER:HA	1:C:171:ILE:HB	2.03	0.40
2:D:2:ARG:HB2	2:D:133:GLN:HE21	1.85	0.40

There are no symmetry-related clashes.

## 5.3 Torsion angles [i](#)

### 5.3.1 Protein backbone [i](#)

In the following table, the Percentiles column shows the percent Ramachandran outliers of the chain as a percentile score with respect to all X-ray entries followed by that with respect to entries of similar resolution.

The Analysed column shows the number of residues for which the backbone conformation was analysed, and the total number of residues.

Mol	Chain	Analysed	Favoured	Allowed	Outliers	Percentiles	
1	A	436/451 (97%)	428 (98%)	8 (2%)	0	100	100
1	C	439/451 (97%)	428 (98%)	11 (2%)	0	100	100
2	B	422/445 (95%)	414 (98%)	7 (2%)	1 (0%)	47	49
2	D	424/445 (95%)	411 (97%)	12 (3%)	1 (0%)	47	49
3	E	119/143 (83%)	119 (100%)	0	0	100	100
4	F	341/384 (89%)	330 (97%)	11 (3%)	0	100	100

Continued on next page...

*Continued from previous page...*

Mol	Chain	Analysed	Favoured	Allowed	Outliers	Percentiles	
All	All	2181/2319 (94%)	2130 (98%)	49 (2%)	2 (0%)	51	54

All (2) Ramachandran outliers are listed below:

Mol	Chain	Res	Type
2	B	82	PRO
2	D	82	PRO

### 5.3.2 Protein sidechains [i](#)

In the following table, the Percentiles column shows the percent sidechain outliers of the chain as a percentile score with respect to all X-ray entries followed by that with respect to entries of similar resolution.

The Analysed column shows the number of residues for which the sidechain conformation was analysed, and the total number of residues.

Mol	Chain	Analysed	Rotameric	Outliers	Percentiles	
1	A	369/379 (97%)	365 (99%)	4 (1%)	73	79
1	C	372/379 (98%)	370 (100%)	2 (0%)	88	92
2	B	368/383 (96%)	367 (100%)	1 (0%)	92	95
2	D	368/383 (96%)	364 (99%)	4 (1%)	73	79
3	E	110/127 (87%)	110 (100%)	0	100	100
4	F	315/342 (92%)	315 (100%)	0	100	100
All	All	1902/1993 (95%)	1891 (99%)	11 (1%)	86	90

All (11) residues with a non-rotameric sidechain are listed below:

Mol	Chain	Res	Type
1	A	221	ARG
1	A	282	TYR
1	A	284	GLU
1	A	300	ASN
2	B	139	HIS
1	C	71	GLU
1	C	221	ARG
2	D	39	ASP
2	D	139	HIS
2	D	229	HIS

*Continued on next page...*

*Continued from previous page...*

Mol	Chain	Res	Type
2	D	247	GLN

Sometimes sidechains can be flipped to improve hydrogen bonding and reduce clashes. All (14) such sidechains are listed below:

Mol	Chain	Res	Type
1	A	88	HIS
1	A	300	ASN
1	A	301	GLN
2	B	294	GLN
1	C	11	GLN
1	C	300	ASN
2	D	294	GLN
2	D	300	ASN
3	E	92	ASN
4	F	229	ASN
4	F	269	GLN
4	F	333	ASN
4	F	348	GLN
4	F	380	HIS

### 5.3.3 RNA [i](#)

There are no RNA molecules in this entry.

### 5.4 Non-standard residues in protein, DNA, RNA chains [i](#)

There are no non-standard protein/DNA/RNA residues in this entry.

### 5.5 Carbohydrates [i](#)

There are no monosaccharides in this entry.

### 5.6 Ligand geometry [i](#)

Of 16 ligands modelled in this entry, 9 are monoatomic - leaving 7 for Mogul analysis.

In the following table, the Counts columns list the number of bonds (or angles) for which Mogul statistics could be retrieved, the number of bonds (or angles) that are observed in the model and the number of bonds (or angles) that are defined in the Chemical Component Dictionary. The

Link column lists molecule types, if any, to which the group is linked. The Z score for a bond length (or angle) is the number of standard deviations the observed value is removed from the expected value. A bond length (or angle) with  $|Z| > 2$  is considered an outlier worth inspection. RMSZ is the root-mean-square of all Z scores of the bond lengths (or angles).

Mol	Type	Chain	Res	Link	Bond lengths			Bond angles		
					Counts	RMSZ	# Z  > 2	Counts	RMSZ	# Z  > 2
5	GTP	A	501	6	26,34,34	1.11	2 (7%)	32,54,54	1.40	6 (18%)
5	GTP	C	501	6	26,34,34	1.11	2 (7%)	32,54,54	1.42	5 (15%)
10	X1M	E	601	-	11,11,11	0.47	0	11,13,13	0.44	0
11	ACP	F	401	6	27,33,33	1.42	5 (18%)	32,52,52	1.46	4 (12%)
8	GDP	B	501	6	24,30,30	0.93	1 (4%)	30,47,47	1.10	3 (10%)
8	GDP	D	501	6	24,30,30	0.93	1 (4%)	30,47,47	1.14	3 (10%)
9	MES	B	504	-	12,12,12	2.27	1 (8%)	14,16,16	1.98	6 (42%)

In the following table, the Chirals column lists the number of chiral outliers, the number of chiral centers analysed, the number of these observed in the model and the number defined in the Chemical Component Dictionary. Similar counts are reported in the Torsion and Rings columns. '-' means no outliers of that kind were identified.

Mol	Type	Chain	Res	Link	Chirals	Torsions	Rings
5	GTP	A	501	6	-	5/18/38/38	0/3/3/3
5	GTP	C	501	6	-	9/18/38/38	0/3/3/3
10	X1M	E	601	-	-	0/4/5/5	0/1/1/1
11	ACP	F	401	6	-	7/15/38/38	0/3/3/3
8	GDP	B	501	6	-	4/12/32/32	0/3/3/3
8	GDP	D	501	6	-	4/12/32/32	0/3/3/3
9	MES	B	504	-	-	4/6/14/14	0/1/1/1

All (12) bond length outliers are listed below:

Mol	Chain	Res	Type	Atoms	Z	Observed(Å)	Ideal(Å)
9	B	504	MES	C8-S	-7.59	1.66	1.77
5	A	501	GTP	C5-C6	-3.96	1.39	1.47
5	C	501	GTP	C5-C6	-3.85	1.39	1.47
11	F	401	ACP	PG-O3G	2.99	1.61	1.54
11	F	401	ACP	PG-O2G	2.95	1.61	1.54
11	F	401	ACP	PB-O3A	2.92	1.61	1.58
11	F	401	ACP	C5-C4	2.53	1.47	1.40
8	B	501	GDP	C6-N1	-2.30	1.34	1.37
11	F	401	ACP	PB-O2B	2.25	1.61	1.56
8	D	501	GDP	C6-N1	-2.22	1.34	1.37

Continued on next page...

*Continued from previous page...*

Mol	Chain	Res	Type	Atoms	Z	Observed(Å)	Ideal(Å)
5	C	501	GTP	C2-N3	2.20	1.38	1.33
5	A	501	GTP	C2-N3	2.12	1.38	1.33

All (27) bond angle outliers are listed below:

Mol	Chain	Res	Type	Atoms	Z	Observed(°)	Ideal(°)
11	F	401	ACP	PB-O3A-PA	-4.00	119.88	132.56
9	B	504	MES	C5-N4-C3	3.65	117.05	108.83
11	F	401	ACP	C3'-C2'-C1'	3.48	106.22	100.98
9	B	504	MES	C6-C5-N4	-3.29	105.11	110.10
5	C	501	GTP	C8-N7-C5	3.22	109.13	102.99
11	F	401	ACP	N3-C2-N1	-3.13	123.79	128.68
5	A	501	GTP	C8-N7-C5	3.08	108.86	102.99
5	A	501	GTP	C5-C6-N1	3.01	119.27	113.95
5	C	501	GTP	PA-O3A-PB	-2.97	122.64	132.83
5	C	501	GTP	C5-C6-N1	2.93	119.13	113.95
5	C	501	GTP	PB-O3B-PG	-2.90	122.88	132.83
5	A	501	GTP	PA-O3A-PB	-2.90	122.88	132.83
8	B	501	GDP	PA-O3A-PB	-2.87	122.97	132.83
8	D	501	GDP	PA-O3A-PB	-2.87	122.99	132.83
5	A	501	GTP	PB-O3B-PG	-2.84	123.08	132.83
5	C	501	GTP	C2-N1-C6	-2.77	120.00	125.10
5	A	501	GTP	C2-N1-C6	-2.73	120.07	125.10
11	F	401	ACP	C4-C5-N7	-2.66	106.63	109.40
8	D	501	GDP	C8-N7-C5	2.41	107.58	102.99
8	B	501	GDP	C5-C6-N1	2.37	118.13	113.95
9	B	504	MES	O3S-S-C8	2.32	109.52	105.77
8	D	501	GDP	C5-C6-N1	2.29	118.00	113.95
9	B	504	MES	O1S-S-C8	2.29	109.67	106.92
9	B	504	MES	C7-N4-C5	2.23	116.93	111.23
8	B	501	GDP	C8-N7-C5	2.20	107.18	102.99
9	B	504	MES	O2S-S-C8	2.11	109.46	106.92
5	A	501	GTP	O6-C6-C5	-2.05	120.37	124.37

There are no chirality outliers.

All (33) torsion outliers are listed below:

Mol	Chain	Res	Type	Atoms
5	A	501	GTP	C5'-O5'-PA-O1A
5	A	501	GTP	C5'-O5'-PA-O2A
5	C	501	GTP	C5'-O5'-PA-O1A
5	C	501	GTP	C5'-O5'-PA-O2A

*Continued on next page...*



*Continued from previous page...*

Mol	Chain	Res	Type	Atoms
8	B	501	GDP	C5'-O5'-PA-O1A
8	B	501	GDP	C5'-O5'-PA-O2A
8	D	501	GDP	C5'-O5'-PA-O1A
8	D	501	GDP	C5'-O5'-PA-O2A
9	B	504	MES	C8-C7-N4-C5
9	B	504	MES	C7-C8-S-O2S
9	B	504	MES	C7-C8-S-O3S
11	F	401	ACP	PG-C3B-PB-O1B
11	F	401	ACP	PG-C3B-PB-O2B
11	F	401	ACP	PG-C3B-PB-O3A
11	F	401	ACP	O4'-C4'-C5'-O5'
11	F	401	ACP	C3'-C4'-C5'-O5'
5	C	501	GTP	PB-O3B-PG-O1G
9	B	504	MES	C7-C8-S-O1S
11	F	401	ACP	PB-C3B-PG-O2G
5	C	501	GTP	C4'-C5'-O5'-PA
11	F	401	ACP	PB-C3B-PG-O1G
5	A	501	GTP	PB-O3B-PG-O2G
5	C	501	GTP	PB-O3B-PG-O2G
5	C	501	GTP	PB-O3B-PG-O3G
8	D	501	GDP	PA-O3A-PB-O3B
5	A	501	GTP	C5'-O5'-PA-O3A
5	C	501	GTP	C5'-O5'-PA-O3A
8	B	501	GDP	C5'-O5'-PA-O3A
8	D	501	GDP	C5'-O5'-PA-O3A
5	A	501	GTP	C4'-C5'-O5'-PA
5	C	501	GTP	PB-O3A-PA-O1A
5	C	501	GTP	PB-O3A-PA-O2A
8	B	501	GDP	PB-O3A-PA-O2A

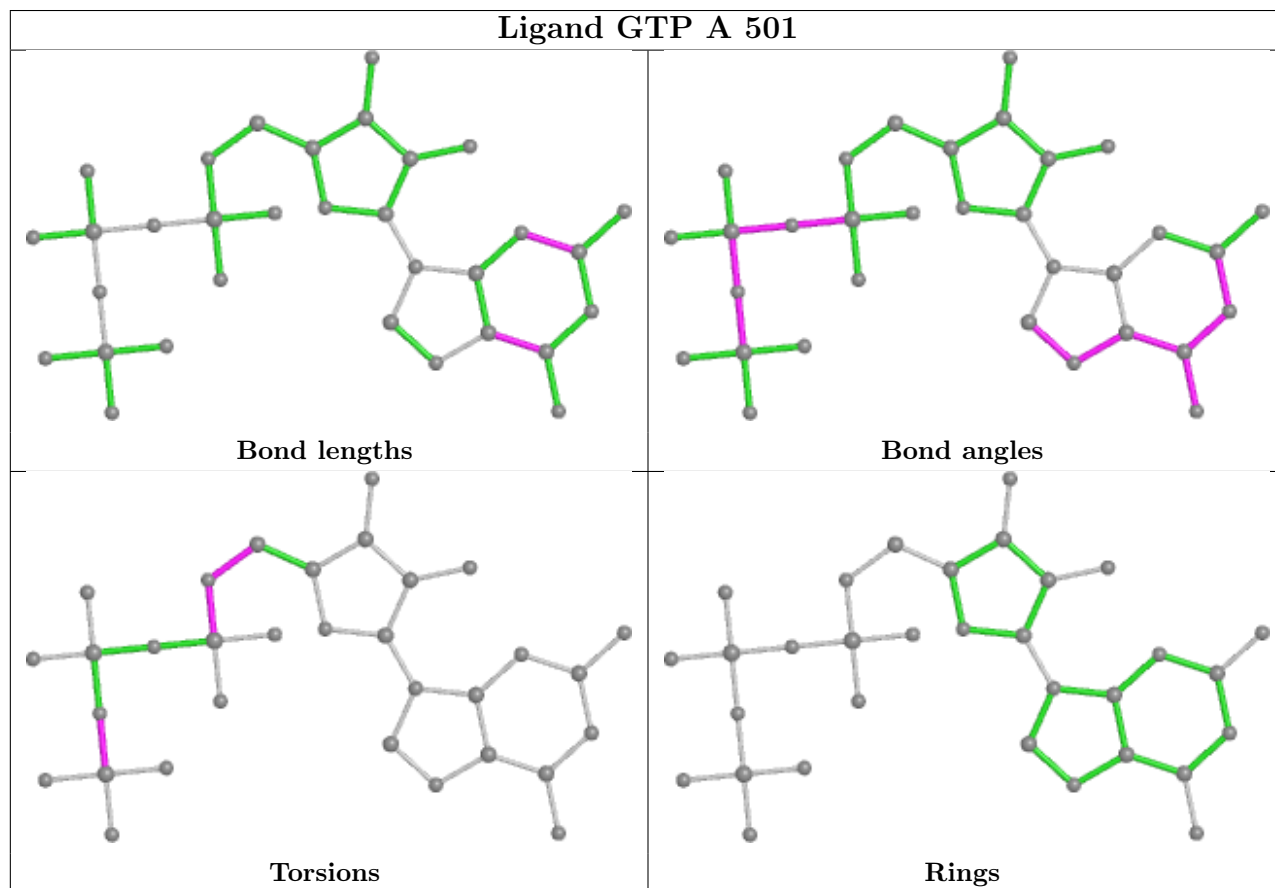
There are no ring outliers.

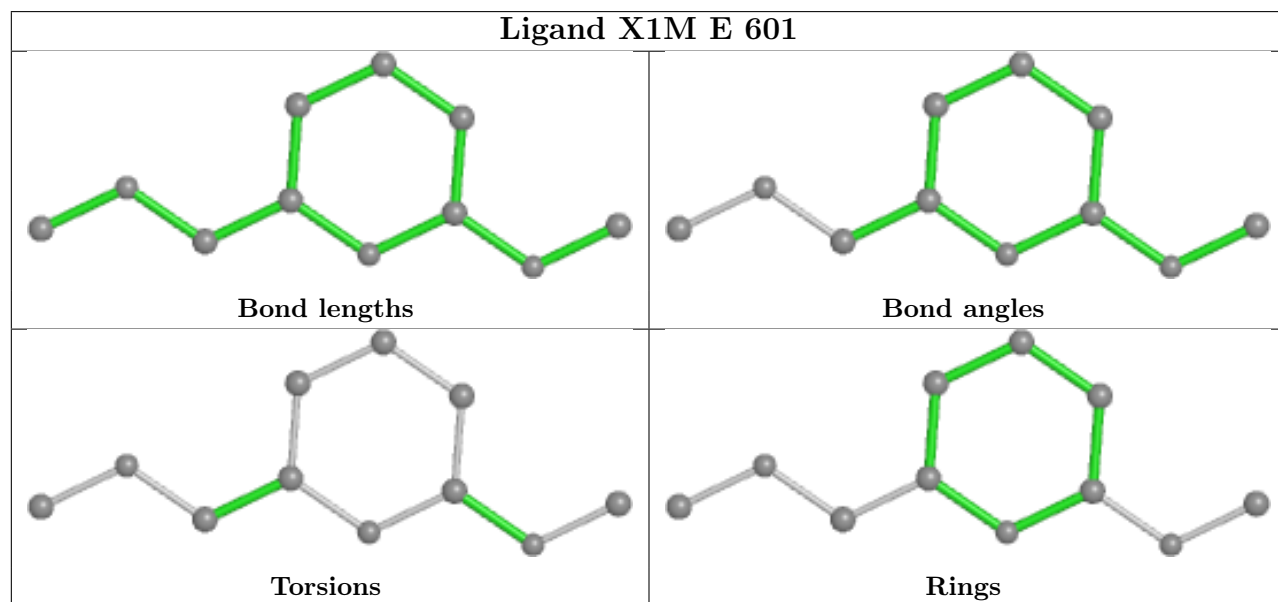
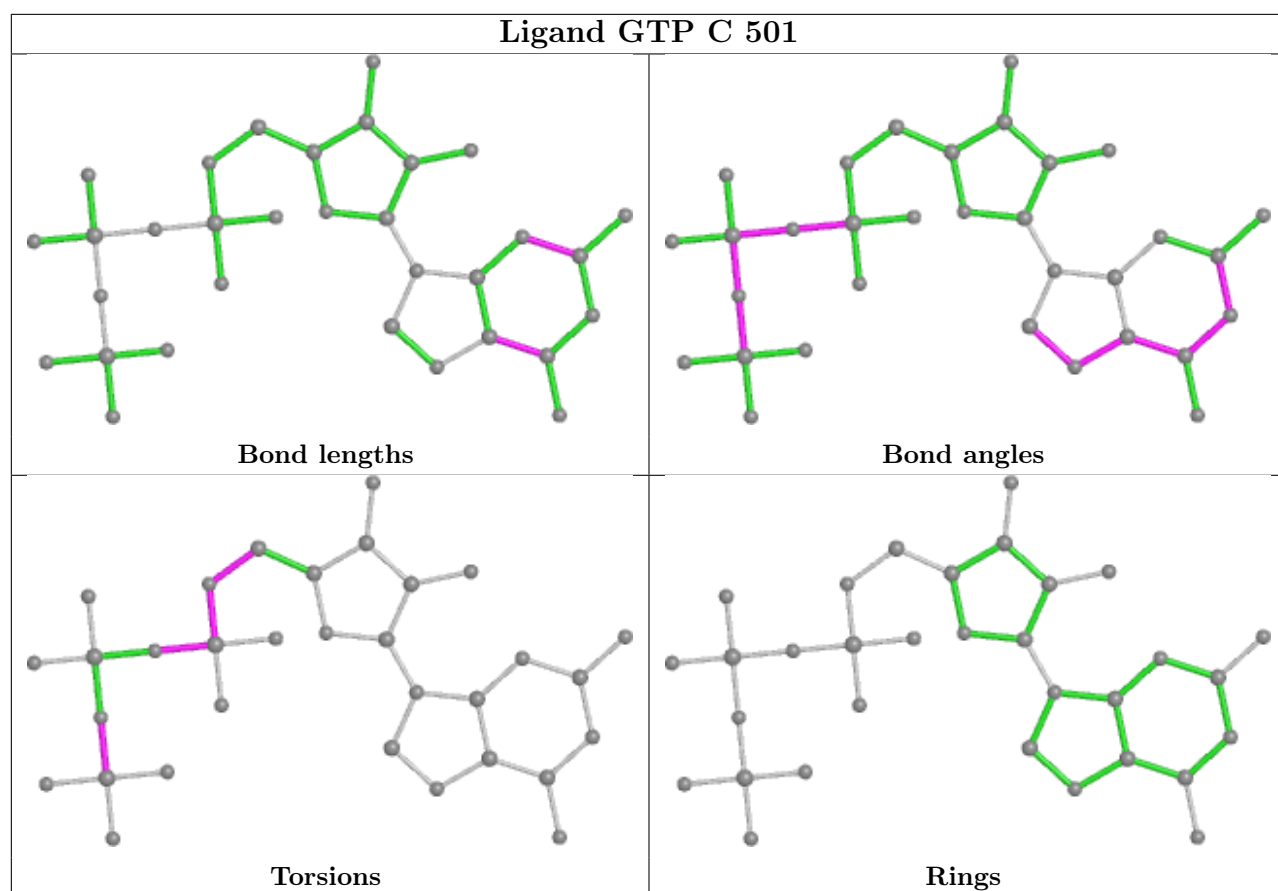
4 monomers are involved in 9 short contacts:

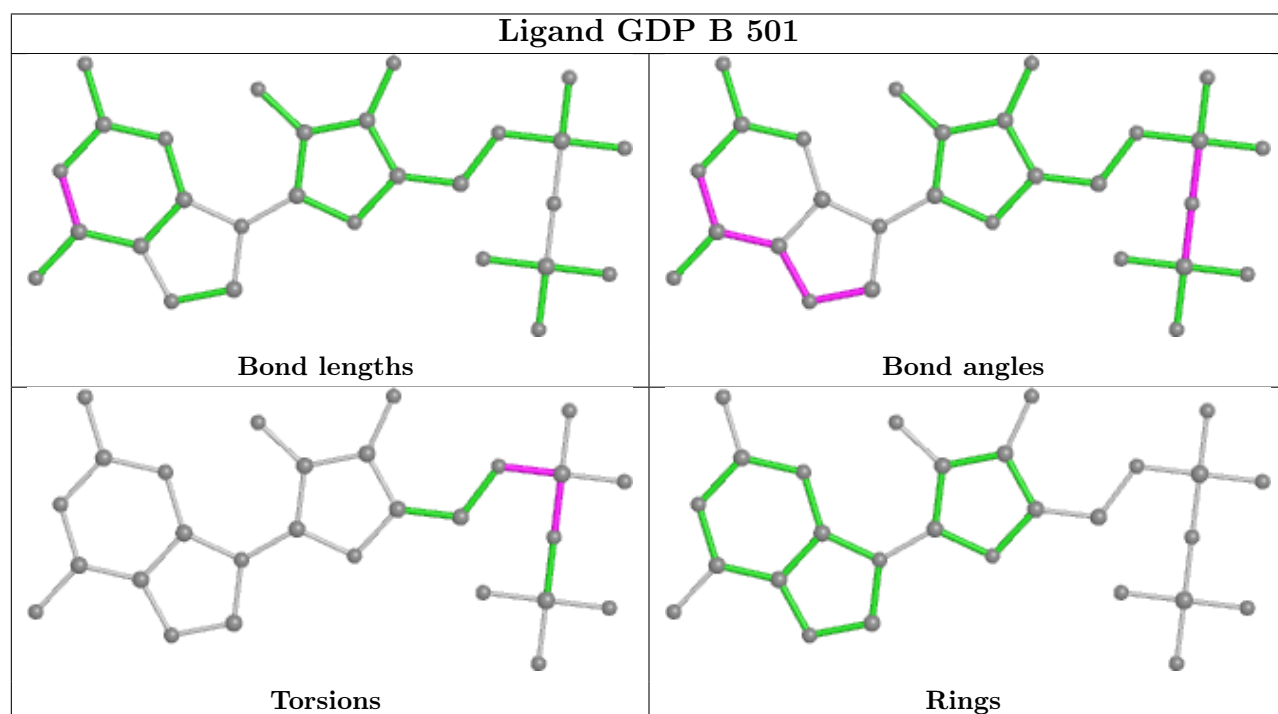
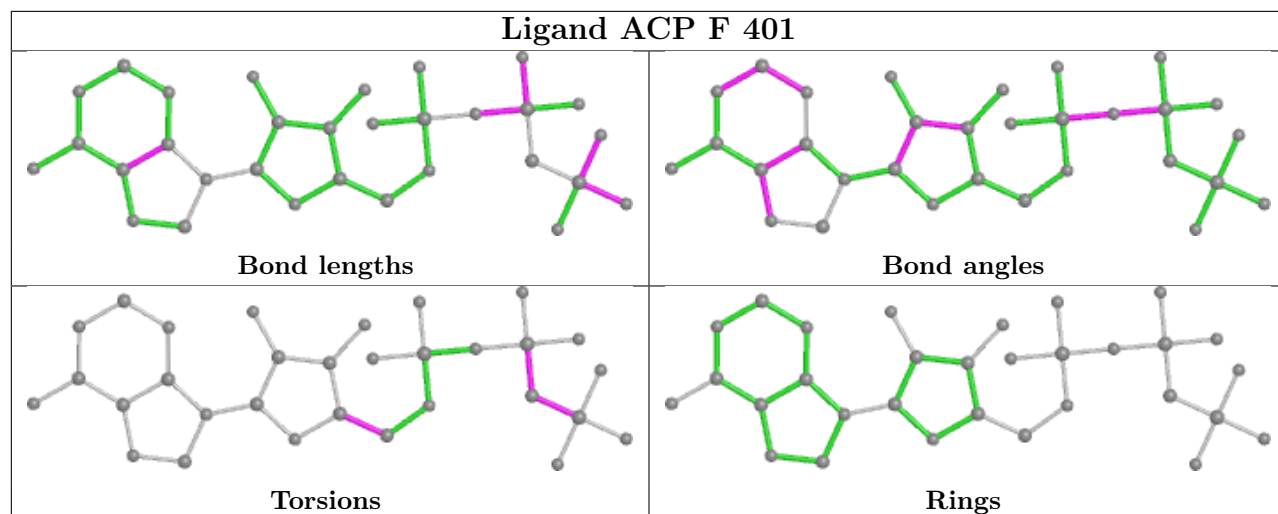
Mol	Chain	Res	Type	Clashes	Symm-Clashes
5	A	501	GTP	1	0
11	F	401	ACP	2	0
8	D	501	GDP	2	0
9	B	504	MES	4	0

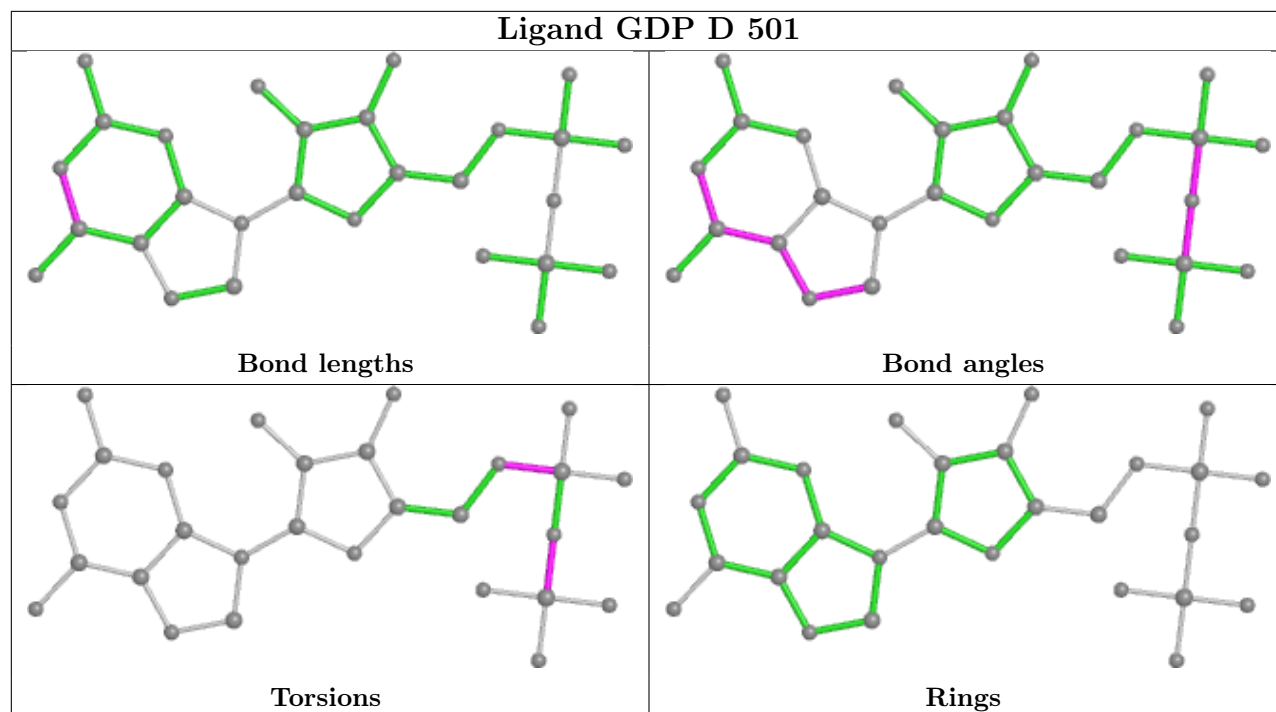
The following is a two-dimensional graphical depiction of Mogul quality analysis of bond lengths, bond angles, torsion angles, and ring geometry for all instances of the Ligand of Interest. In addition, ligands with molecular weight > 250 and outliers as shown on the validation Tables will

also be included. For torsion angles, if less than 5% of the Mogul distribution of torsion angles is within 10 degrees of the torsion angle in question, then that torsion angle is considered an outlier. Any bond that is central to one or more torsion angles identified as an outlier by Mogul will be highlighted in the graph. For rings, the root-mean-square deviation (RMSD) between the ring in question and similar rings identified by Mogul is calculated over all ring torsion angles. If the average RMSD is greater than 60 degrees and the minimal RMSD between the ring in question and any Mogul-identified rings is also greater than 60 degrees, then that ring is considered an outlier. The outliers are highlighted in purple. The color gray indicates Mogul did not find sufficient equivalents in the CSD to analyse the geometry.









## 5.7 Other polymers [i](#)

There are no such residues in this entry.

## 5.8 Polymer linkage issues [i](#)

There are no chain breaks in this entry.

## 6 Fit of model and data

### 6.1 Protein, DNA and RNA chains

In the following table, the column labelled ‘#RSRZ > 2’ contains the number (and percentage) of RSRZ outliers, followed by percent RSRZ outliers for the chain as percentile scores relative to all X-ray entries and entries of similar resolution. The OWAB column contains the minimum, median, 95<sup>th</sup> percentile and maximum values of the occupancy-weighted average B-factor per residue. The column labelled ‘Q < 0.9’ lists the number of (and percentage) of residues with an average occupancy less than 0.9.

Mol	Chain	Analysed	<RSRZ>	#RSRZ>2	OWAB(Å <sup>2</sup> )	Q<0.9
1	A	438/451 (97%)	0.30	11 (2%) 57 62	45, 63, 99, 151	0
1	C	440/451 (97%)	0.26	7 (1%) 72 75	36, 50, 74, 110	0
2	B	425/445 (95%)	0.33	7 (1%) 72 75	39, 62, 100, 146	2 (0%)
2	D	428/445 (96%)	0.27	15 (3%) 44 50	45, 68, 102, 151	4 (0%)
3	E	123/143 (86%)	0.59	11 (8%) 9 12	50, 73, 113, 145	0
4	F	349/384 (90%)	0.53	38 (10%) 5 7	55, 86, 147, 174	0
All	All	2203/2319 (94%)	0.34	89 (4%) 38 44	36, 64, 113, 174	6 (0%)

All (89) RSRZ outliers are listed below:

Mol	Chain	Res	Type	RSRZ
1	A	179	THR	8.5
2	D	276	THR	8.3
2	D	285	ALA	7.1
2	D	280	SER	6.5
2	B	281	GLN	6.2
4	F	89	GLU	5.7
3	E	6	MET	5.7
4	F	142	ARG	5.6
4	F	137	ARG	5.3
2	B	276	THR	5.3
2	B	1	MET	5.3
2	D	279	GLY	5.2
4	F	103	THR	5.2
1	A	282	TYR	5.0
2	D	281	GLN	4.8
4	F	173	ILE	4.8
2	D	277	SER	4.7
4	F	372	THR	4.5
3	E	26	PRO	4.4

*Continued on next page...*

*Continued from previous page...*

<b>Mol</b>	<b>Chain</b>	<b>Res</b>	<b>Type</b>	<b>RSRZ</b>
1	A	262	TYR	4.3
4	F	152	SER	4.1
4	F	381	HIS	4.0
1	C	218	ASP	3.9
4	F	143	GLU	3.7
1	A	88	HIS	3.6
3	E	24	LEU	3.6
1	A	438	ASP	3.6
4	F	138	ARG	3.5
1	C	357	TYR	3.5
4	F	90	SER	3.5
4	F	132	LEU	3.5
2	B	57	THR	3.4
2	B	284	ARG	3.4
2	D	278	ARG	3.4
4	F	134	ALA	3.4
4	F	234	GLN	3.4
4	F	371	PRO	3.3
3	E	27	PRO	3.3
2	B	277	SER	3.2
2	D	82	PRO	3.1
4	F	169	LEU	3.1
4	F	135	TYR	3.1
4	F	136	ASN	3.1
1	C	286	LEU	3.1
4	F	161	LEU	3.1
2	D	293	GLN	3.0
1	C	284	GLU	3.0
2	B	56	ALA	3.0
4	F	130	VAL	2.9
2	D	37	HIS	2.9
4	F	99	VAL	2.9
2	D	57	THR	2.7
4	F	382	HIS	2.7
1	A	163	LYS	2.7
4	F	31	ARG	2.7
1	C	282	TYR	2.7
1	C	440	VAL	2.7
1	A	346	TRP	2.6
4	F	105	LEU	2.6
4	F	125	THR	2.6
4	F	140	GLU	2.6

*Continued on next page...*

*Continued from previous page...*

Mol	Chain	Res	Type	RSRZ
1	A	351	PHE	2.6
4	F	131	PHE	2.5
4	F	233	PHE	2.5
4	F	186	LEU	2.4
2	D	401	ARG	2.4
4	F	176	GLN	2.4
2	D	1	MET	2.4
3	E	25	LYS	2.4
4	F	159	GLY	2.3
3	E	7	GLU	2.3
1	A	89	PRO	2.3
1	A	77	GLU	2.3
1	C	302	MET	2.3
1	A	362	VAL	2.3
3	E	115	HIS	2.2
3	E	22	VAL	2.2
3	E	142	GLU	2.2
4	F	306	HIS	2.2
2	D	220	THR	2.2
2	D	407	TRP	2.1
3	E	48	GLU	2.1
4	F	75	ALA	2.1
4	F	45	ASN	2.1
4	F	181	VAL	2.0
4	F	160	ILE	2.0
4	F	177	GLY	2.0
4	F	104	ASN	2.0
3	E	139	LEU	2.0

## 6.2 Non-standard residues in protein, DNA, RNA chains [i](#)

There are no non-standard protein/DNA/RNA residues in this entry.

## 6.3 Carbohydrates [i](#)

There are no monosaccharides in this entry.

## 6.4 Ligands [i](#)

In the following table, the Atoms column lists the number of modelled atoms in the group and the number defined in the chemical component dictionary. The B-factors column lists the minimum,



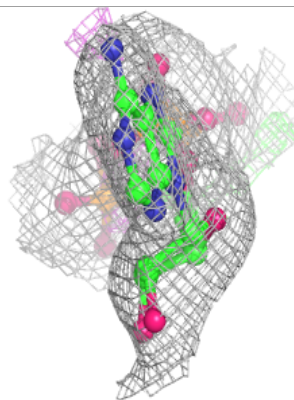
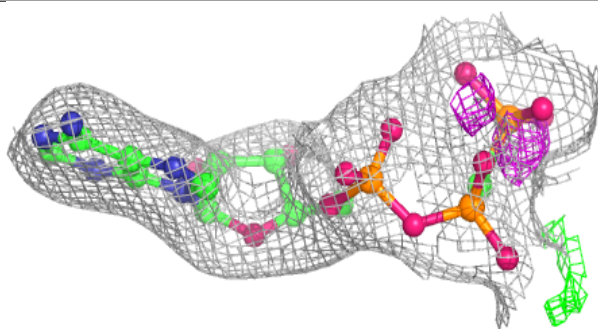
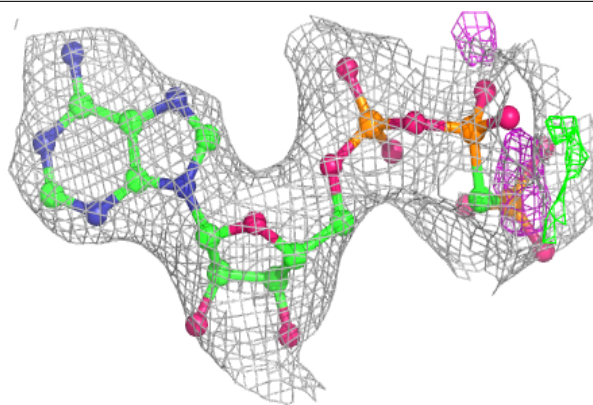
median, 95<sup>th</sup> percentile and maximum values of B factors of atoms in the group. The column labelled 'Q< 0.9' lists the number of atoms with occupancy less than 0.9.

Mol	Type	Chain	Res	Atoms	RSCC	RSR	B-factors(Å <sup>2</sup> )	Q<0.9
9	MES	B	504	12/12	0.63	0.42	140,144,154,157	0
7	CA	A	504	1/1	0.83	0.05	91,91,91,91	0
6	MG	D	502	1/1	0.85	0.07	61,61,61,61	0
11	ACP	F	401	31/31	0.85	0.14	85,91,99,105	0
7	CA	B	503	1/1	0.88	0.08	110,110,110,110	0
6	MG	F	402	1/1	0.89	0.07	82,82,82,82	0
8	GDP	D	501	28/28	0.94	0.14	60,66,74,77	0
6	MG	C	502	1/1	0.94	0.12	39,39,39,39	0
7	CA	C	503	1/1	0.94	0.08	66,66,66,66	0
5	GTP	A	501	32/32	0.95	0.13	41,48,53,55	0
10	X1M	E	601	11/11	0.95	0.13	46,53,61,63	0
7	CA	A	503	1/1	0.95	0.09	84,84,84,84	0
6	MG	A	502	1/1	0.98	0.08	46,46,46,46	0
6	MG	B	502	1/1	0.98	0.14	38,38,38,38	0
5	GTP	C	501	32/32	0.98	0.14	37,41,45,46	0
8	GDP	B	501	28/28	0.98	0.12	37,45,50,52	0

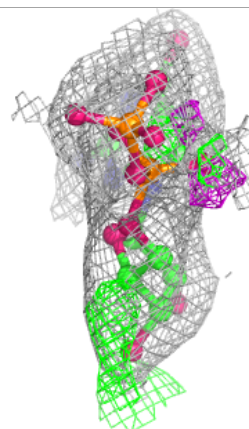
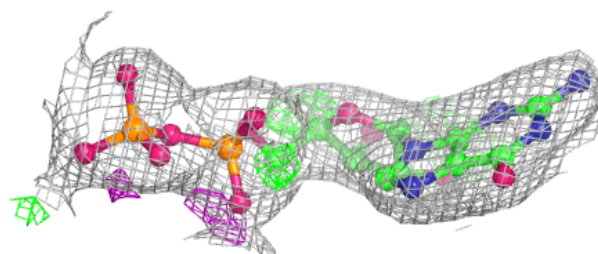
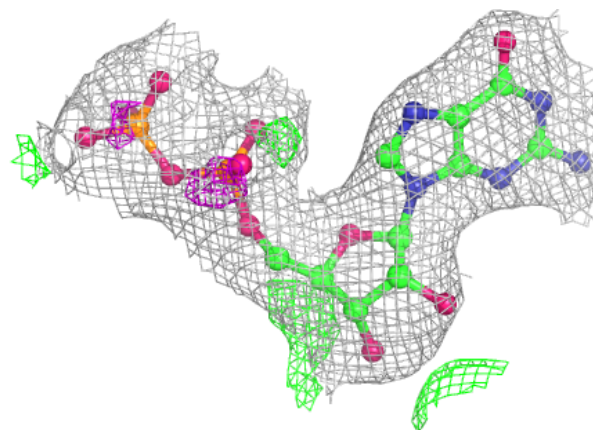
The following is a graphical depiction of the model fit to experimental electron density of all instances of the Ligand of Interest. In addition, ligands with molecular weight > 250 and outliers as shown on the geometry validation Tables will also be included. Each fit is shown from different orientation to approximate a three-dimensional view.

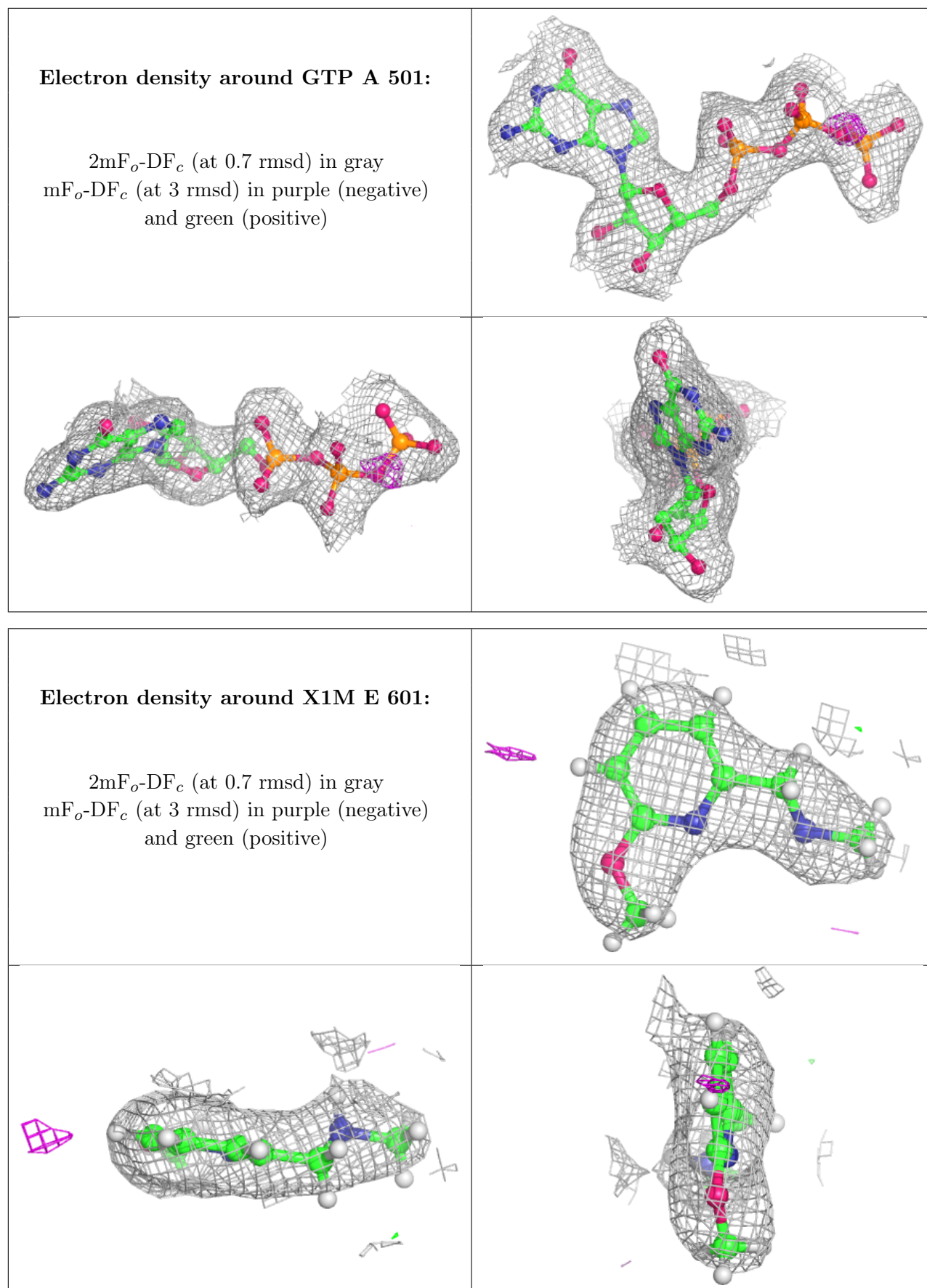
**Electron density around ACP F 401:**

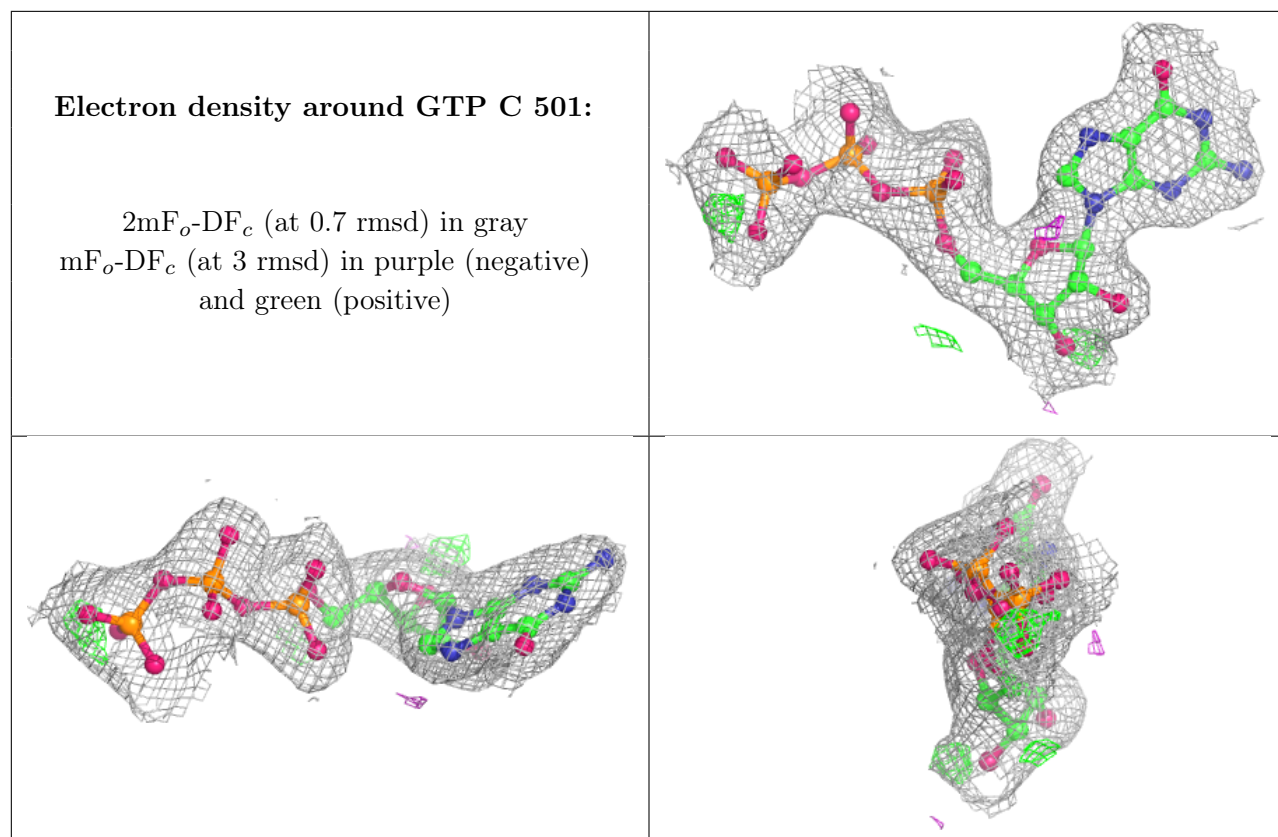
$2mF_o-DF_c$  (at 0.7 rmsd) in gray  
 $mF_o-DF_c$  (at 3 rmsd) in purple (negative)  
and green (positive)

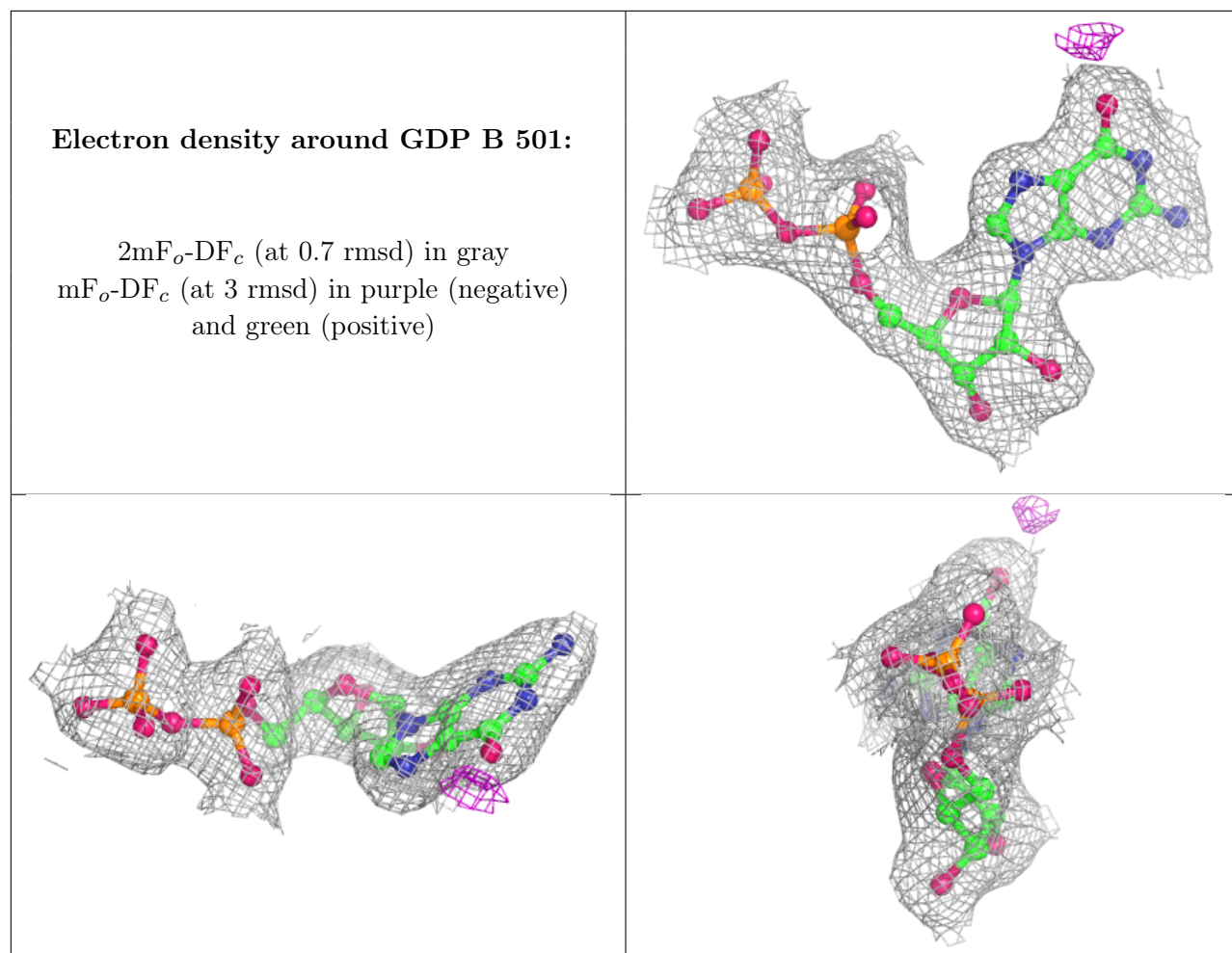
**Electron density around GDP D 501:**

$2mF_o-DF_c$  (at 0.7 rmsd) in gray  
 $mF_o-DF_c$  (at 3 rmsd) in purple (negative)  
and green (positive)









## 6.5 Other polymers [i](#)

There are no such residues in this entry.