



## wwPDB EM Validation Summary Report ⓘ

Nov 19, 2022 – 06:20 pm GMT

PDB ID : 5OGC  
EMDB ID : EMD-3803  
Title : Molecular basis of human kinesin-8 function and inhibition  
Authors : Locke, J.; Joseph, A.P.; Topf, M.; Moores, C.A.  
Deposited on : 2017-07-12  
Resolution : 4.80 Å(reported)

This is a wwPDB EM Validation Summary Report for a publicly released PDB entry.

We welcome your comments at [validation@mail.wwpdb.org](mailto:validation@mail.wwpdb.org)

A user guide is available at

<https://www.wwpdb.org/validation/2017/EMValidationReportHelp>

with specific help available everywhere you see the ⓘ symbol.

The types of validation reports are described at

<http://www.wwpdb.org/validation/2017/FAQs#types>.

---

The following versions of software and data (see [references ⓘ](#)) were used in the production of this report:

EMDB validation analysis : 0.0.1.dev43  
Mogul : 1.8.4, CSD as541be (2020)  
MolProbity : 4.02b-467  
buster-report : 1.1.7 (2018)  
Percentile statistics : 20191225.v01 (using entries in the PDB archive December 25th 2019)  
MapQ : 1.9.9  
Ideal geometry (proteins) : Engh & Huber (2001)  
Ideal geometry (DNA, RNA) : Parkinson et al. (1996)  
Validation Pipeline (wwPDB-VP) : 2.31.2

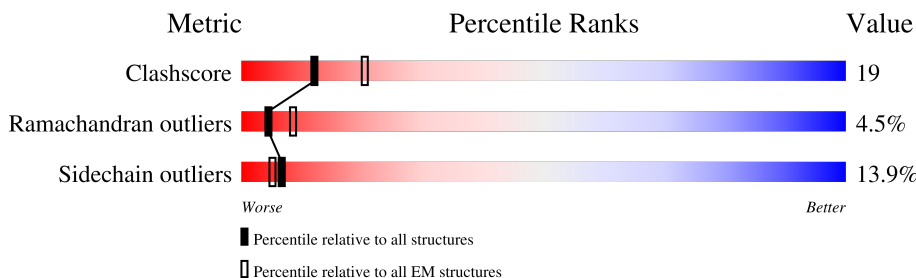
# 1 Overall quality at a glance

The following experimental techniques were used to determine the structure:

*ELECTRON MICROSCOPY*

The reported resolution of this entry is 4.80 Å.

Percentile scores (ranging between 0-100) for global validation metrics of the entry are shown in the following graphic. The table shows the number of entries on which the scores are based.



Metric	Whole archive (#Entries)	EM structures (#Entries)
Clashscore	158937	4297
Ramachandran outliers	154571	4023
Sidechain outliers	154315	3826

The table below summarises the geometric issues observed across the polymeric chains and their fit to the map. The red, orange, yellow and green segments of the bar indicate the fraction of residues that contain outliers for  $\geq 3$ , 2, 1 and 0 types of geometric quality criteria respectively. A grey segment represents the fraction of residues that are not modelled. The numeric value for each fraction is indicated below the corresponding segment, with a dot representing fractions  $\leq 5\%$ . The upper red bar (where present) indicates the fraction of residues that have poor fit to the EM map (all-atom inclusion  $< 40\%$ ). The numeric value is given above the bar.

Mol	Chain	Length	Quality of chain
1	1-K	377	
1	2-K	377	
2	1-A	451	
2	2-A	451	
3	1-B	445	
3	2-B	445	

The following table lists non-polymeric compounds, carbohydrate monomers and non-standard residues in protein, DNA, RNA chains that are outliers for geometric or electron-density-fit criteria:

Mol	Type	Chain	Res	Chirality	Geometry	Clashes	Electron density
7	GTP	1-A	503	-	-	X	-
7	GTP	2-A	503	-	-	X	-

## 2 Entry composition i

There are 9 unique types of molecules in this entry. The entry contains 18580 atoms, of which 0 are hydrogens and 0 are deuteriums.

In the tables below, the AltConf column contains the number of residues with at least one atom in alternate conformation and the Trace column contains the number of residues modelled with at most 2 atoms.

- Molecule 1 is a protein called Kinesin-like protein KIF18A.

Mol	Chain	Residues	Atoms					AltConf	Trace
			Total	C	N	O	S		
1	1-K	328	Total	C	N	O	S	0	0
			2569	1605	463	489	12		
1	2-K	328	Total	C	N	O	S	0	0
			2569	1605	463	489	12		

There are 3 discrepancies between the modelled and reference sequences:

Chain	Residue	Modelled	Actual	Comment	Reference
K	-2	GLY	-	expression tag	UNP Q8NI77
K	-1	SER	-	expression tag	UNP Q8NI77
K	0	HIS	-	expression tag	UNP Q8NI77

- Molecule 2 is a protein called Tubulin alpha chain.

Mol	Chain	Residues	Atoms					AltConf	Trace
			Total	C	N	O	S		
2	1-A	412	Total	C	N	O	S	0	0
			3227	2043	551	613	20		
2	2-A	412	Total	C	N	O	S	0	0
			3227	2043	551	613	20		

There are 3 discrepancies between the modelled and reference sequences:

Chain	Residue	Modelled	Actual	Comment	Reference
A	136	SER	LEU	conflict	UNP F2Z4C1
A	265	GLY	ILE	conflict	UNP F2Z4C1
A	358	GLU	GLN	conflict	UNP F2Z4C1

- Molecule 3 is a protein called Tubulin beta chain.

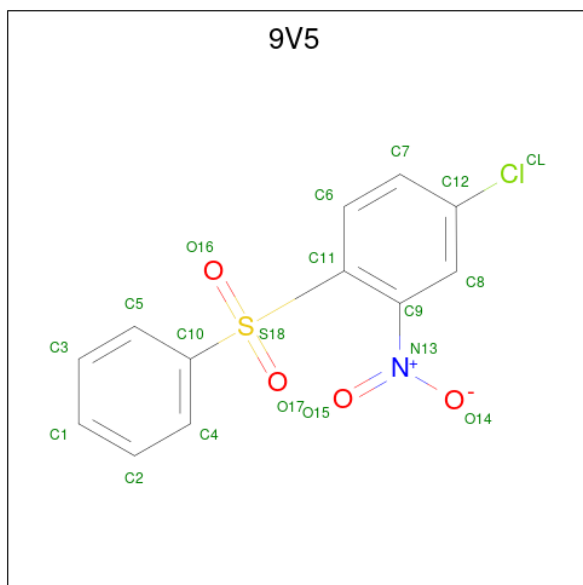
Mol	Chain	Residues	Atoms					AltConf	Trace
			Total	C	N	O	S		
3	1-B	426	Total	C	N	O	S	0	0
			3351	2105	575	646	25		

*Continued on next page...*

Continued from previous page...

Mol	Chain	Residues	Atoms					AltConf	Trace
			Total	C	N	O	S		
3	2-B	426	3351	2105	575	646	25	0	0

- Molecule 4 is 4-chloranyl-2-nitro-1-(phenylsulfonyl)benzene (three-letter code: 9V5) (formula: C<sub>12</sub>H<sub>8</sub>ClNO<sub>4</sub>S).



Mol	Chain	Residues	Atoms					AltConf	
			Total	C	Cl	N	O		S
4	1-K	1	19	12	1	1	4	1	0
4	2-K	1	19	12	1	1	4	1	0

- Molecule 5 is ZINC ION (three-letter code: ZN) (formula: Zn).

Mol	Chain	Residues	Atoms		AltConf
5	1-A	1	Total	Zn	0
			1	1	
5	2-A	1	Total	Zn	0
			1	1	

- Molecule 6 is MAGNESIUM ION (three-letter code: MG) (formula: Mg).

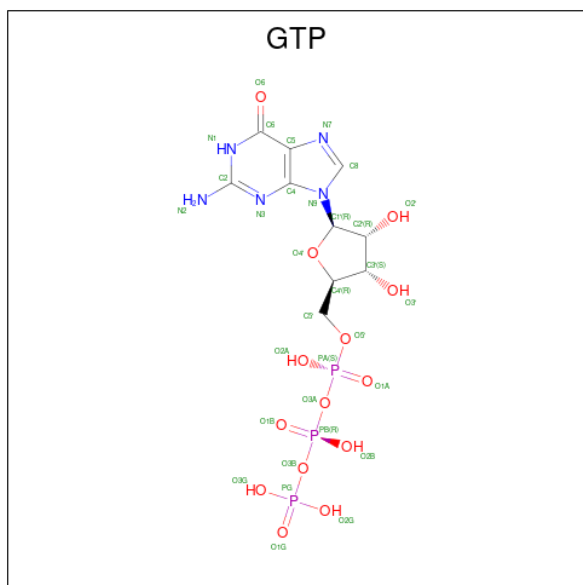
Mol	Chain	Residues	Atoms		AltConf
6	1-A	1	Total	Mg	0
			1	1	

Continued on next page...

Continued from previous page...

Mol	Chain	Residues	Atoms		AltConf
			Total	Mg	
6	2-A	1	1	1	0

- Molecule 7 is GUANOSINE-5'-TRIPHOSPHATE (three-letter code: GTP) (formula:  $C_{10}H_{16}N_5O_{14}P_3$ ).



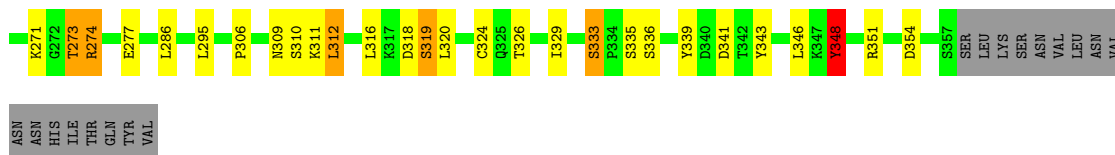
Mol	Chain	Residues	Atoms				AltConf	
			Total	C	N	O		P
7	1-A	1	32	10	5	14	3	0
7	2-A	1	32	10	5	14	3	0

- Molecule 8 is GUANOSINE-5'-DIPHOSPHATE (three-letter code: GDP) (formula:  $C_{10}H_{15}N_5O_{11}P_2$ ).

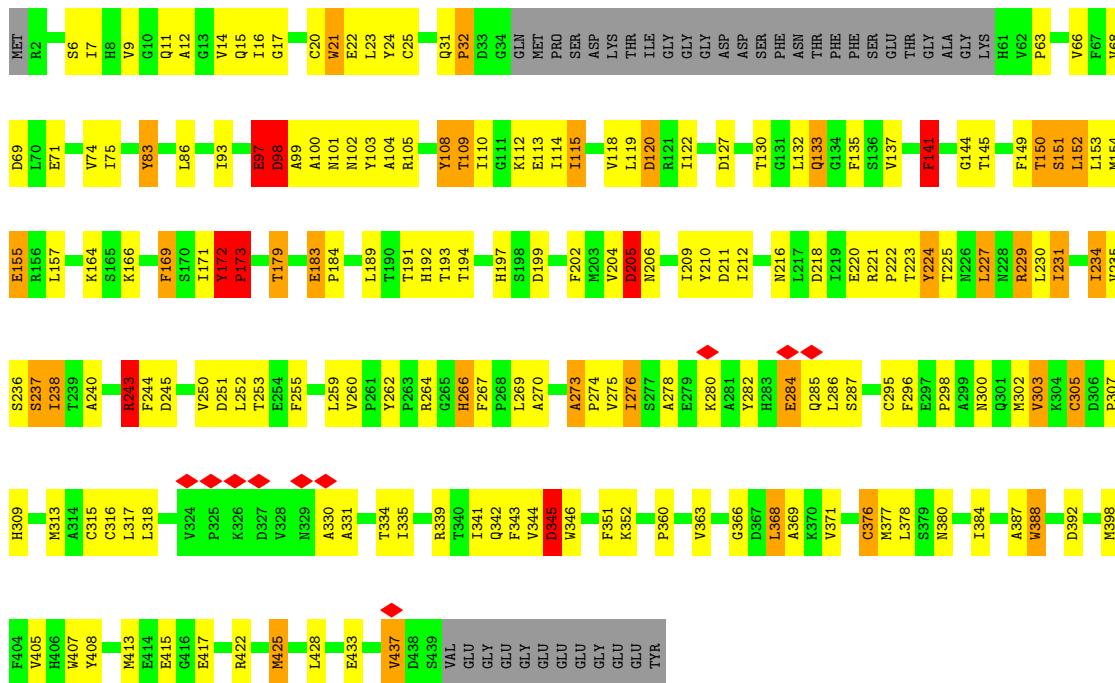




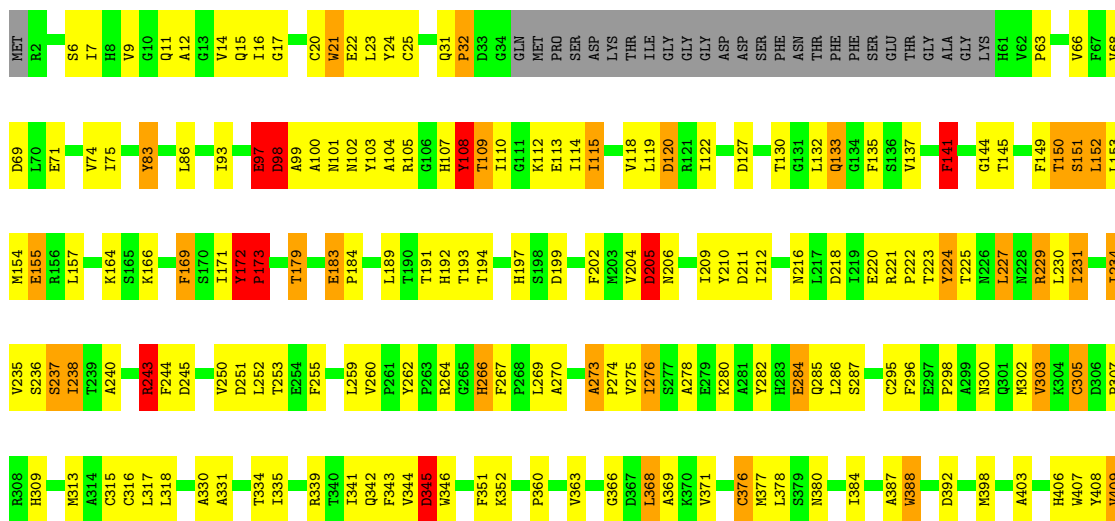




• Molecule 2: Tubulin alpha chain

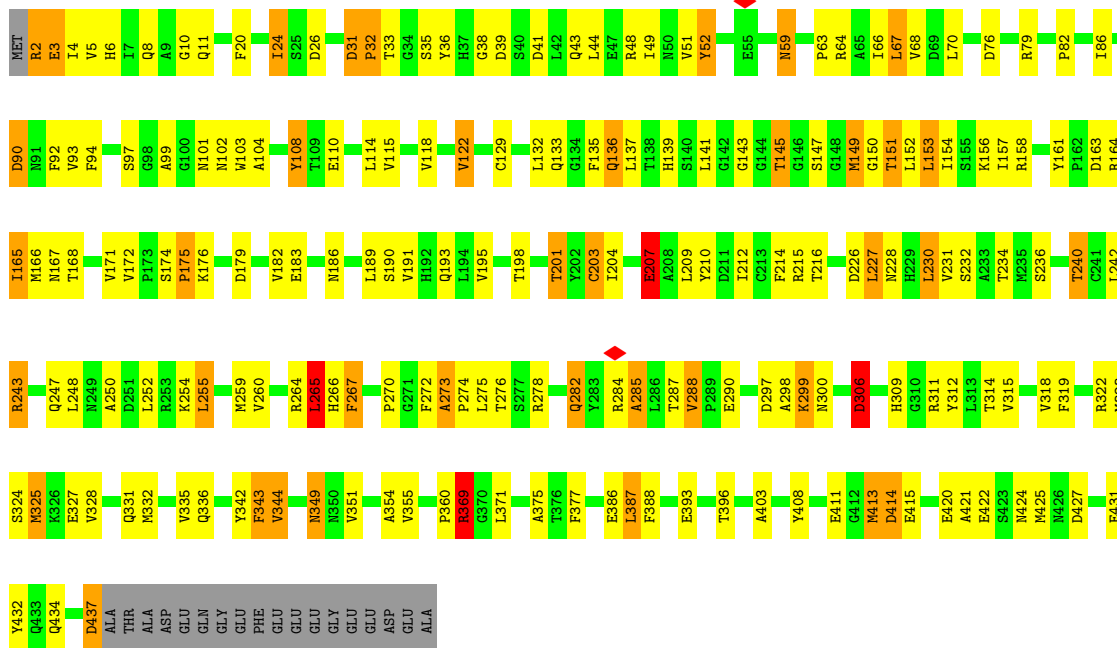


• Molecule 2: Tubulin alpha chain

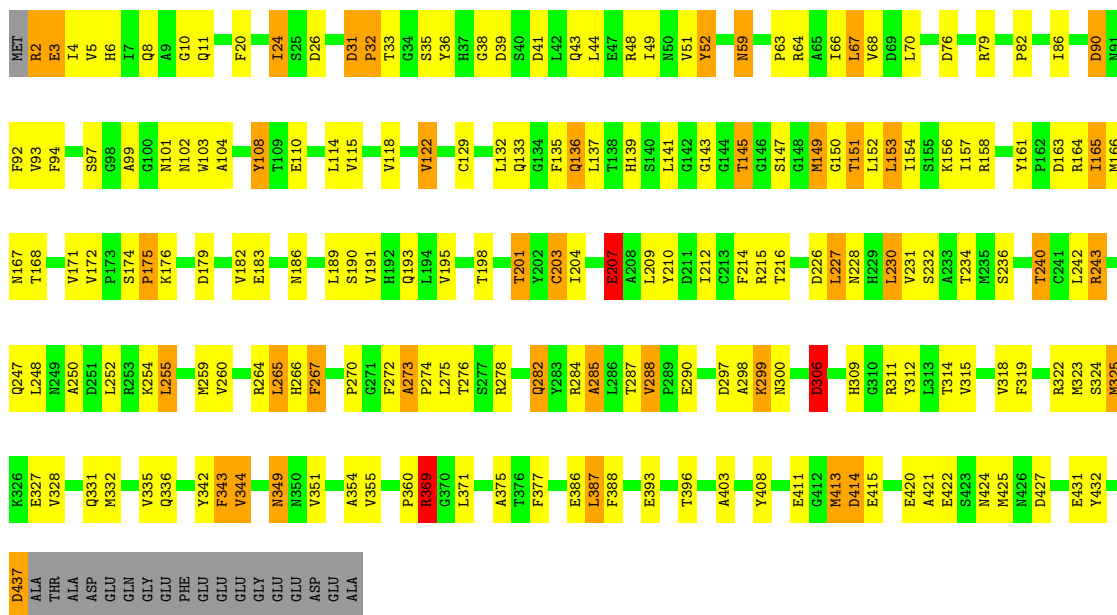




• Molecule 3: Tubulin beta chain



• Molecule 3: Tubulin beta chain



## 4 Experimental information

Property	Value	Source
EM reconstruction method	HELICAL	Depositor
Imposed symmetry	HELICAL, twist=0°, rise=81 Å, axial sym=C1	Depositor
Number of segments used	135382	Depositor
Resolution determination method	FSC 0.143 CUT-OFF	Depositor
CTF correction method	PHASE FLIPPING AND AMPLITUDE CORRECTION	Depositor
Microscope	FEI POLARA 300	Depositor
Voltage (kV)	300	Depositor
Electron dose ( $e^-/\text{Å}^2$ )	5	Depositor
Minimum defocus (nm)	500	Depositor
Maximum defocus (nm)	3500	Depositor
Magnification	Not provided	
Image detector	GATAN K2 SUMMIT (4k x 4k)	Depositor
Maximum map value	0.204	Depositor
Minimum map value	0.000	Depositor
Average map value	0.020	Depositor
Map value standard deviation	0.034	Depositor
Recommended contour level	0.05	Depositor
Map size (Å)	112.59, 80.62, 104.25	wwPDB
Map dimensions	81, 58, 75	wwPDB
Map angles (°)	90.0, 90.0, 90.0	wwPDB
Pixel spacing (Å)	1.39, 1.3900001, 1.39	Depositor

## 5 Model quality [i](#)

### 5.1 Standard geometry [i](#)

Bond lengths and bond angles in the following residue types are not validated in this section: 9V5, TA1, GTP, MG, GDP, ZN

The Z score for a bond length (or angle) is the number of standard deviations the observed value is removed from the expected value. A bond length (or angle) with  $|Z| > 5$  is considered an outlier worth inspection. RMSZ is the root-mean-square of all Z scores of the bond lengths (or angles).

Mol	Chain	Bond lengths		Bond angles	
		RMSZ	# Z  >5	RMSZ	# Z  >5
1	1-K	0.65	0/2611	1.14	8/3524 (0.2%)
1	2-K	0.32	0/2611	0.49	1/3524 (0.0%)
2	1-A	0.70	0/3300	1.19	10/4482 (0.2%)
2	2-A	0.71	0/3300	1.20	11/4482 (0.2%)
3	1-B	0.74	2/3426 (0.1%)	1.17	8/4642 (0.2%)
3	2-B	0.74	2/3426 (0.1%)	1.17	9/4642 (0.2%)
All	All	0.67	4/18674 (0.0%)	1.10	47/25296 (0.2%)

Chiral center outliers are detected by calculating the chiral volume of a chiral center and verifying if the center is modelled as a planar moiety or with the opposite hand. A planarity outlier is detected by checking planarity of atoms in a peptide group, atoms in a mainchain group or atoms of a sidechain that are expected to be planar.

Mol	Chain	#Chirality outliers	#Planarity outliers
1	1-K	0	27
1	2-K	1	3
2	1-A	0	27
2	2-A	0	32
3	1-B	0	28
3	2-B	0	28
All	All	1	145

All (4) bond length outliers are listed below:

Mol	Chain	Res	Type	Atoms	Z	Observed(Å)	Ideal(Å)
3	1-B	431	GLU	CD-OE2	-9.96	1.14	1.25
3	2-B	431	GLU	CD-OE2	-9.96	1.14	1.25
3	1-B	431	GLU	CD-OE1	9.24	1.35	1.25
3	2-B	431	GLU	CD-OE1	9.24	1.35	1.25

The worst 5 of 47 bond angle outliers are listed below:

Mol	Chain	Res	Type	Atoms	Z	Observed(°)	Ideal(°)
3	1-B	64	ARG	NE-CZ-NH1	11.25	125.93	120.30
3	2-B	64	ARG	NE-CZ-NH1	11.25	125.93	120.30
2	1-A	243	ARG	NE-CZ-NH1	9.74	125.17	120.30
2	2-A	243	ARG	NE-CZ-NH1	9.74	125.17	120.30
1	1-K	340	ASP	CB-CG-OD1	-8.19	110.93	118.30

All (1) chirality outliers are listed below:

Mol	Chain	Res	Type	Atom
1	2-K	47	LYS	CA

5 of 145 planarity outliers are listed below:

Mol	Chain	Res	Type	Group
1	1-K	120	THR	Mainchain
1	1-K	69	ASN	Sidechain
1	1-K	77	ASP	Peptide
1	1-K	81	ASP	Sidechain
1	1-K	86	GLN	Sidechain

## 5.2 Too-close contacts [i](#)

In the following table, the Non-H and H(model) columns list the number of non-hydrogen atoms and hydrogen atoms in the chain respectively. The H(added) column lists the number of hydrogen atoms added and optimized by MolProbity. The Clashes column lists the number of clashes within the asymmetric unit, whereas Symm-Clashes lists symmetry-related clashes.

Mol	Chain	Non-H	H(model)	H(added)	Clashes	Symm-Clashes
1	1-K	2569	0	2587	152	0
1	2-K	2569	0	2587	65	0
2	1-A	3227	0	3143	126	0
2	2-A	3227	0	3143	133	0
3	1-B	3351	0	3229	125	0
3	2-B	3351	0	3229	122	0
4	1-K	19	0	0	0	0
4	2-K	19	0	0	5	0
5	1-A	1	0	0	0	0
5	2-A	1	0	0	0	0
6	1-A	1	0	0	0	0
6	2-A	1	0	0	0	0
7	1-A	32	0	12	10	0
7	2-A	32	0	12	10	0

*Continued on next page...*

Continued from previous page...

Mol	Chain	Non-H	H(model)	H(added)	Clashes	Symm-Clashes
8	1-B	28	0	12	2	0
8	2-B	28	0	12	2	0
9	1-B	62	0	51	6	0
9	2-B	62	0	51	6	0
All	All	18580	0	18068	707	0

The all-atom clashscore is defined as the number of clashes found per 1000 atoms (including hydrogen atoms). The all-atom clashscore for this structure is 19.

The worst 5 of 707 close contacts within the same asymmetric unit are listed below, sorted by their clash magnitude.

Atom-1	Atom-2	Interatomic distance (Å)	Clash overlap (Å)
1:K:33:VAL:HG13	1:K:34:VAL:H	1.05	1.12
3:B:172:VAL:HG11	3:B:387:LEU:HD21	1.32	1.11
3:B:172:VAL:HG11	3:B:387:LEU:HD21	1.32	1.11
1:K:31:HIS:HE1	1:K:46:PRO:O	1.40	1.02
1:K:291:VAL:HG13	1:K:305:ILE:HD11	1.41	0.97

There are no symmetry-related clashes.

## 5.3 Torsion angles [i](#)

### 5.3.1 Protein backbone [i](#)

In the following table, the Percentiles column shows the percent Ramachandran outliers of the chain as a percentile score with respect to all PDB entries followed by that with respect to all EM entries.

The Analysed column shows the number of residues for which the backbone conformation was analysed, and the total number of residues.

Mol	Chain	Analysed	Favoured	Allowed	Outliers	Percentiles	
1	1-K	324/377 (86%)	288 (89%)	28 (9%)	8 (2%)	5	34
1	2-K	324/377 (86%)	292 (90%)	28 (9%)	4 (1%)	13	50
2	1-A	408/451 (90%)	316 (78%)	66 (16%)	26 (6%)	1	18
2	2-A	408/451 (90%)	317 (78%)	65 (16%)	26 (6%)	1	18
3	1-B	424/445 (95%)	338 (80%)	66 (16%)	20 (5%)	2	23
3	2-B	424/445 (95%)	338 (80%)	66 (16%)	20 (5%)	2	23

Continued on next page...

Continued from previous page...

Mol	Chain	Analysed	Favoured	Allowed	Outliers	Percentiles
All	All	2312/2546 (91%)	1889 (82%)	319 (14%)	104 (4%)	4 24

5 of 104 Ramachandran outliers are listed below:

Mol	Chain	Res	Type
1	1-K	33	VAL
1	1-K	268	SER
2	1-A	97	GLU
2	1-A	108	TYR
2	1-A	109	THR

### 5.3.2 Protein sidechains [i](#)

In the following table, the Percentiles column shows the percent sidechain outliers of the chain as a percentile score with respect to all PDB entries followed by that with respect to all EM entries.

The Analysed column shows the number of residues for which the sidechain conformation was analysed, and the total number of residues.

Mol	Chain	Analysed	Rotameric	Outliers	Percentiles
1	1-K	287/334 (86%)	251 (88%)	36 (12%)	4 21
1	2-K	287/334 (86%)	243 (85%)	44 (15%)	2 16
2	1-A	347/377 (92%)	303 (87%)	44 (13%)	4 21
2	2-A	347/377 (92%)	303 (87%)	44 (13%)	4 21
3	1-B	367/381 (96%)	312 (85%)	55 (15%)	3 16
3	2-B	367/381 (96%)	312 (85%)	55 (15%)	3 16
All	All	2002/2184 (92%)	1724 (86%)	278 (14%)	7 19

5 of 278 residues with a non-rotameric sidechain are listed below:

Mol	Chain	Res	Type
3	2-B	90	ASP
3	2-B	149	MET
3	2-B	282	GLN
3	1-B	153	LEU
3	1-B	145	THR

Sometimes sidechains can be flipped to improve hydrogen bonding and reduce clashes. 5 of 50 such sidechains are listed below:

Mol	Chain	Res	Type
1	2-K	303	GLN
2	2-A	216	ASN
3	2-B	436	GLN
1	2-K	344	ASN
2	2-A	11	GLN

### 5.3.3 RNA [i](#)

There are no RNA molecules in this entry.

### 5.4 Non-standard residues in protein, DNA, RNA chains [i](#)

There are no non-standard protein/DNA/RNA residues in this entry.

### 5.5 Carbohydrates [i](#)

There are no monosaccharides in this entry.

### 5.6 Ligand geometry [i](#)

Of 12 ligands modelled in this entry, 4 are monoatomic - leaving 8 for Mogul analysis.

In the following table, the Counts columns list the number of bonds (or angles) for which Mogul statistics could be retrieved, the number of bonds (or angles) that are observed in the model and the number of bonds (or angles) that are defined in the Chemical Component Dictionary. The Link column lists molecule types, if any, to which the group is linked. The Z score for a bond length (or angle) is the number of standard deviations the observed value is removed from the expected value. A bond length (or angle) with  $|Z| > 2$  is considered an outlier worth inspection. RMSZ is the root-mean-square of all Z scores of the bond lengths (or angles).

Mol	Type	Chain	Res	Link	Bond lengths			Bond angles		
					Counts	RMSZ	# $ Z  > 2$	Counts	RMSZ	# $ Z  > 2$
8	GDP	1-B	600	-	24,30,30	2.59	9 (37%)	30,47,47	2.93	8 (26%)
9	TA1	2-B	601	-	68,68,68	2.01	19 (27%)	105,105,105	1.39	11 (10%)
8	GDP	2-B	600	-	24,30,30	2.59	9 (37%)	30,47,47	2.93	8 (26%)
7	GTP	2-A	503	6	26,34,34	1.33	4 (15%)	32,54,54	1.02	2 (6%)
9	TA1	1-B	601	-	68,68,68	2.01	19 (27%)	105,105,105	1.39	11 (10%)
4	9V5	2-K	401	-	19,20,20	3.32	5 (26%)	25,29,29	1.72	3 (12%)
7	GTP	1-A	503	6	26,34,34	1.33	4 (15%)	32,54,54	1.02	2 (6%)
4	9V5	1-K	401	-	19,20,20	0.73	0	25,29,29	1.34	3 (12%)



In the following table, the Chirals column lists the number of chiral outliers, the number of chiral centers analysed, the number of these observed in the model and the number defined in the Chemical Component Dictionary. Similar counts are reported in the Torsion and Rings columns. '-' means no outliers of that kind were identified.

Mol	Type	Chain	Res	Link	Chirals	Torsions	Rings
8	GDP	1-B	600	-	-	4/12/32/32	0/3/3/3
9	TA1	2-B	601	-	-	9/41/127/127	0/7/7/7
8	GDP	2-B	600	-	-	4/12/32/32	0/3/3/3
7	GTP	2-A	503	6	-	3/18/38/38	0/3/3/3
9	TA1	1-B	601	-	-	9/41/127/127	0/7/7/7
4	9V5	2-K	401	-	-	4/14/16/16	0/2/2/2
7	GTP	1-A	503	6	-	3/18/38/38	0/3/3/3
4	9V5	1-K	401	-	-	6/14/16/16	0/2/2/2

The worst 5 of 69 bond length outliers are listed below:

Mol	Chain	Res	Type	Atoms	Z	Observed(Å)	Ideal(Å)
4	2-K	401	9V5	O15-N13	11.51	1.42	1.22
4	2-K	401	9V5	C9-N13	-6.62	1.33	1.45
8	1-B	600	GDP	O4'-C1'	6.24	1.49	1.41
8	2-B	600	GDP	O4'-C1'	6.24	1.49	1.41
8	1-B	600	GDP	O6-C6	5.66	1.34	1.23

The worst 5 of 48 bond angle outliers are listed below:

Mol	Chain	Res	Type	Atoms	Z	Observed(°)	Ideal(°)
8	1-B	600	GDP	C8-N7-C5	9.32	120.74	102.99
8	2-B	600	GDP	C8-N7-C5	9.32	120.74	102.99
8	1-B	600	GDP	N2-C2-N3	6.27	131.94	119.74
8	2-B	600	GDP	N2-C2-N3	6.27	131.94	119.74
8	1-B	600	GDP	C5-C6-N1	6.09	124.70	113.95

There are no chirality outliers.

5 of 42 torsion outliers are listed below:

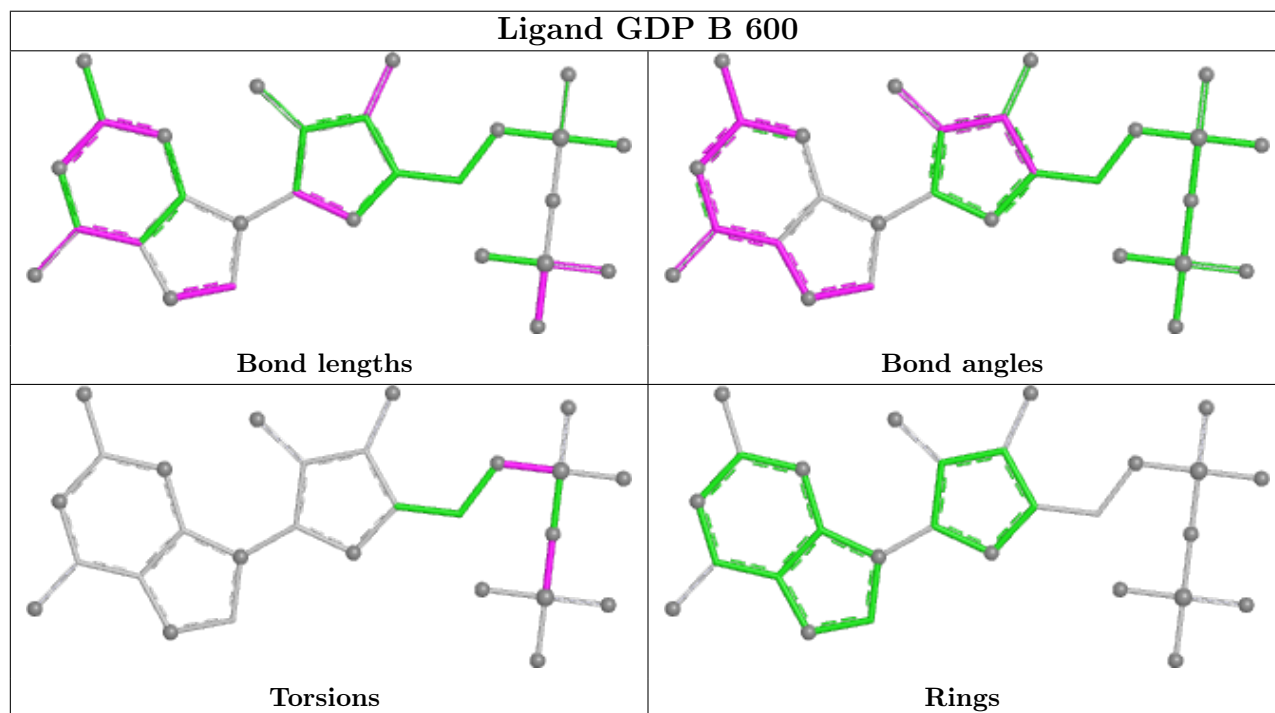
Mol	Chain	Res	Type	Atoms
4	1-K	401	9V5	C9-C11-S18-C10
4	1-K	401	9V5	C8-C9-N13-O15
4	1-K	401	9V5	C11-C9-N13-O15
8	1-B	600	GDP	PA-O3A-PB-O2B
8	1-B	600	GDP	C5'-O5'-PA-O3A

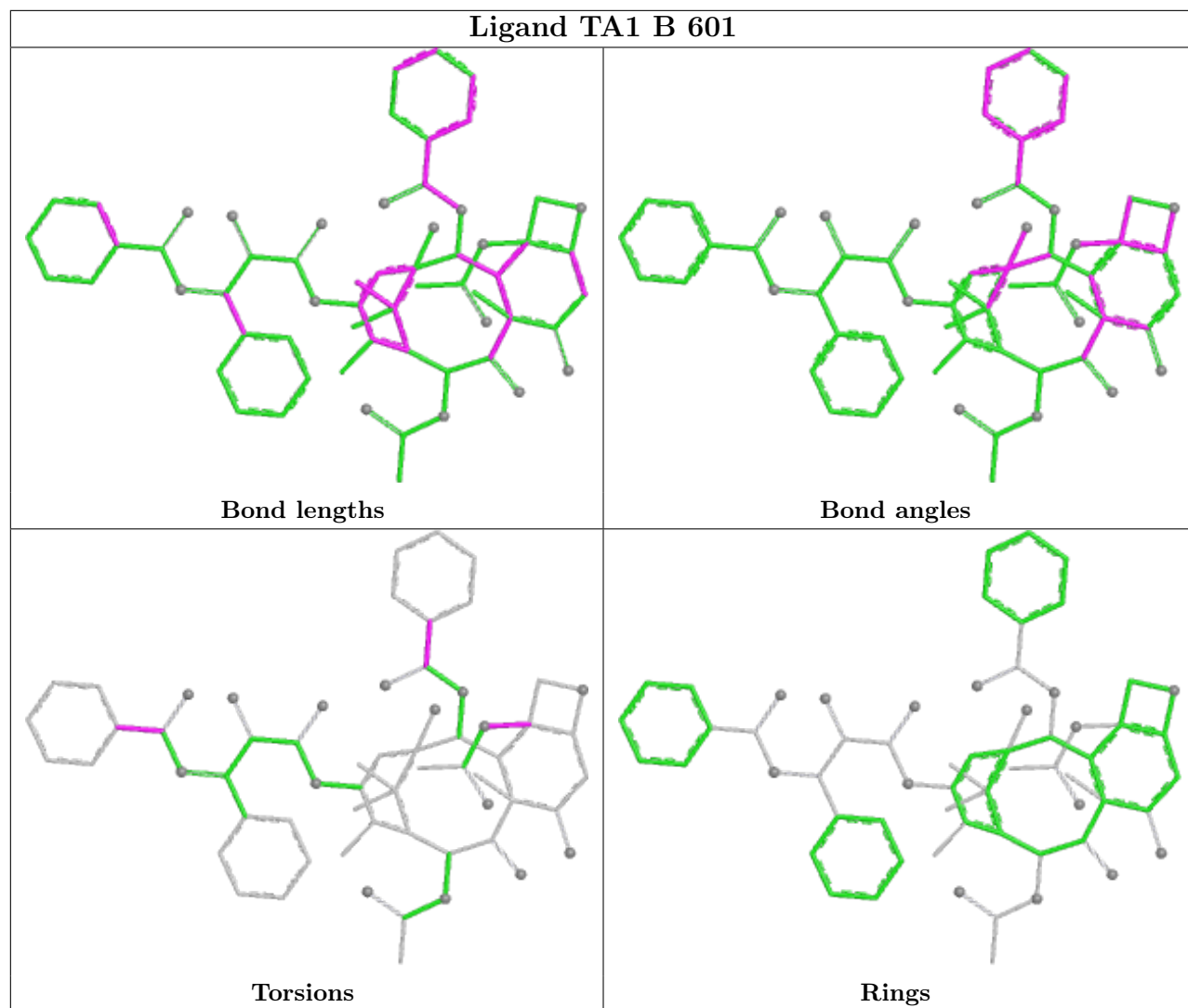
There are no ring outliers.

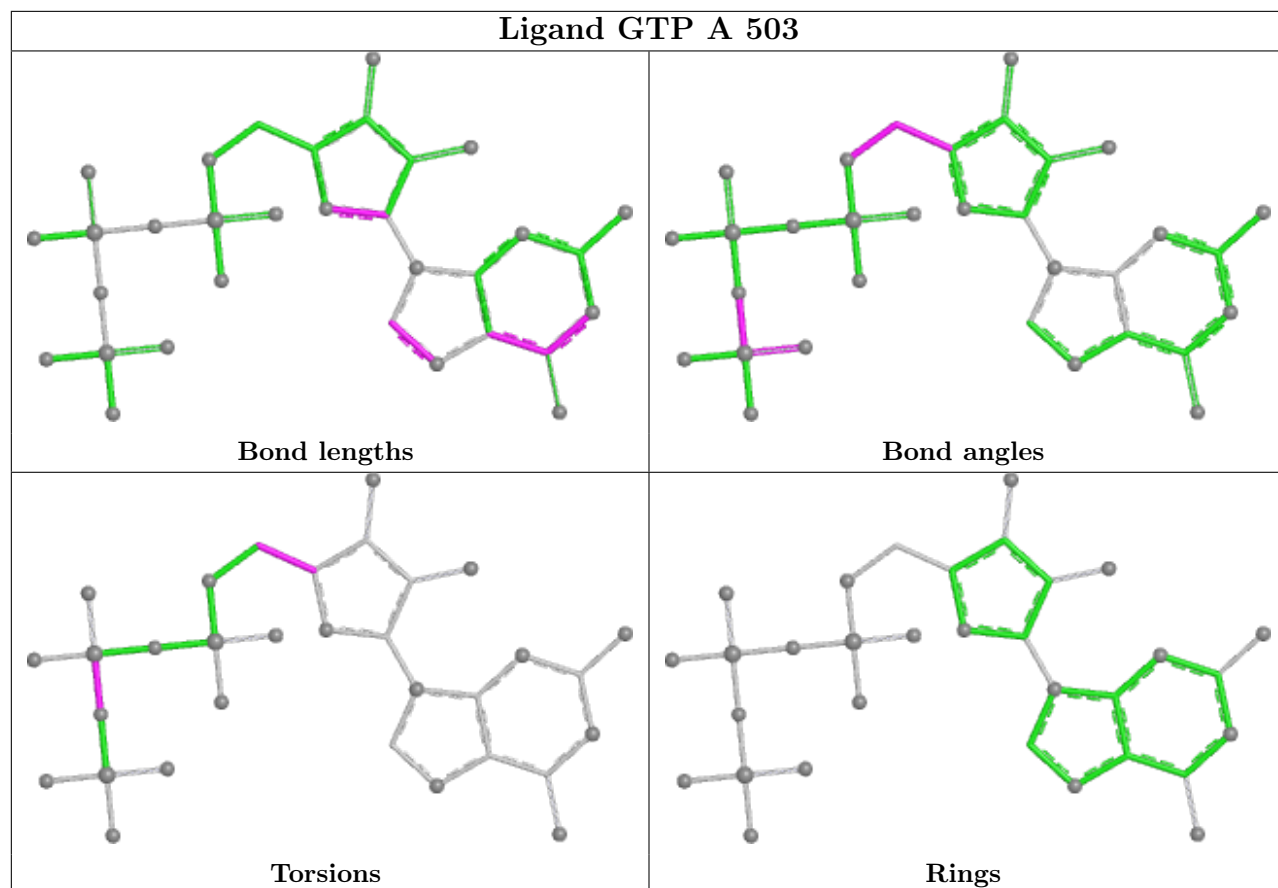
7 monomers are involved in 41 short contacts:

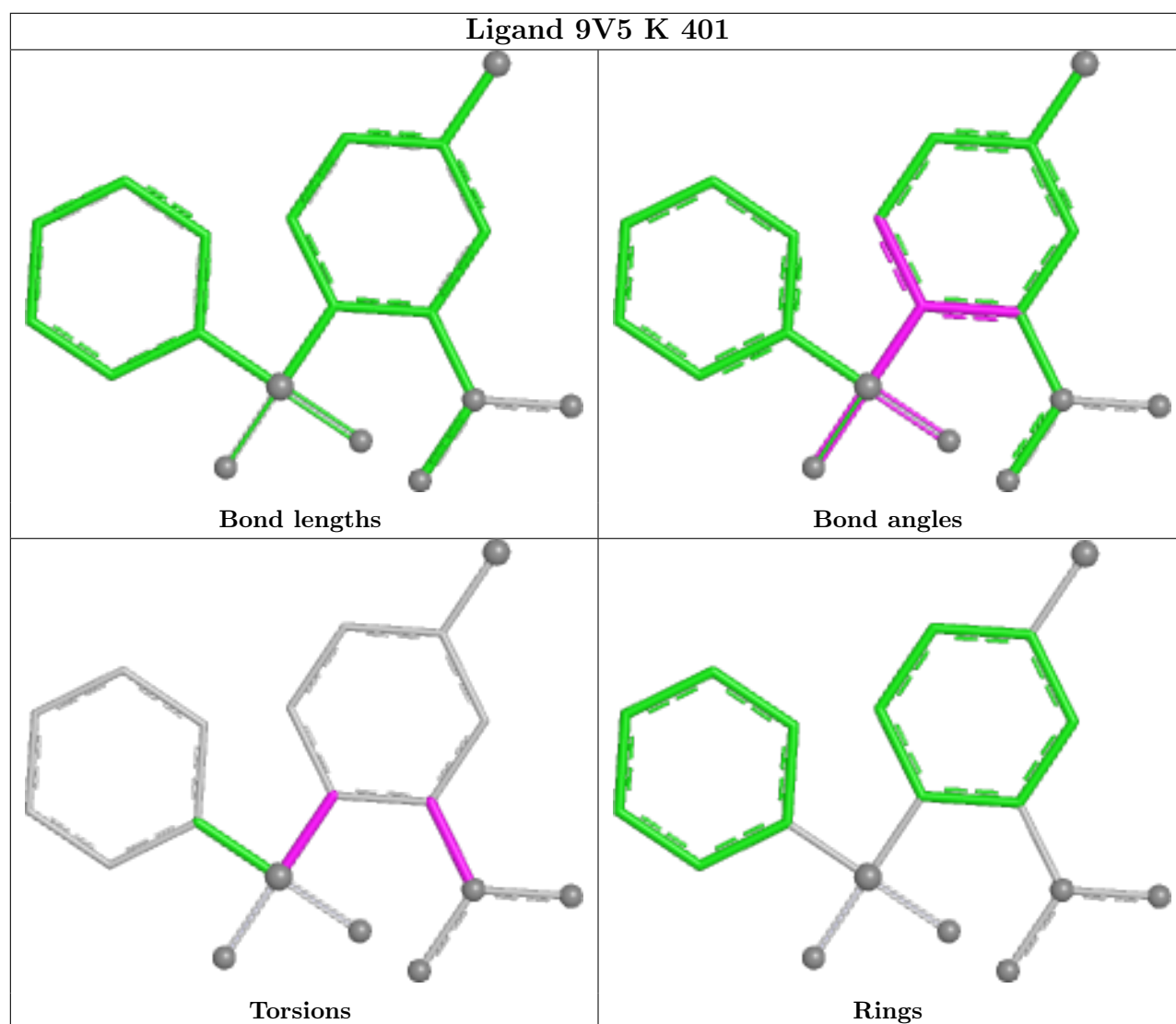
Mol	Chain	Res	Type	Clashes	Symm-Clashes
8	1-B	600	GDP	2	0
9	2-B	601	TA1	6	0
8	2-B	600	GDP	2	0
7	2-A	503	GTP	10	0
9	1-B	601	TA1	6	0
4	2-K	401	9V5	5	0
7	1-A	503	GTP	10	0

The following is a two-dimensional graphical depiction of Mogul quality analysis of bond lengths, bond angles, torsion angles, and ring geometry for all instances of the Ligand of Interest. In addition, ligands with molecular weight > 250 and outliers as shown on the validation Tables will also be included. For torsion angles, if less than 5% of the Mogul distribution of torsion angles is within 10 degrees of the torsion angle in question, then that torsion angle is considered an outlier. Any bond that is central to one or more torsion angles identified as an outlier by Mogul will be highlighted in the graph. For rings, the root-mean-square deviation (RMSD) between the ring in question and similar rings identified by Mogul is calculated over all ring torsion angles. If the average RMSD is greater than 60 degrees and the minimal RMSD between the ring in question and any Mogul-identified rings is also greater than 60 degrees, then that ring is considered an outlier. The outliers are highlighted in purple. The color gray indicates Mogul did not find sufficient equivalents in the CSD to analyse the geometry.









## 5.7 Other polymers [i](#)

There are no such residues in this entry.

## 5.8 Polymer linkage issues [i](#)

There are no chain breaks in this entry.

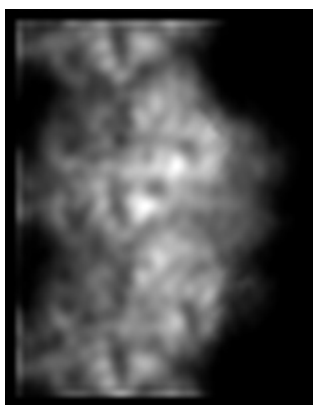
## 6 Map visualisation [i](#)

This section contains visualisations of the EMDB entry EMD-3803. These allow visual inspection of the internal detail of the map and identification of artifacts.

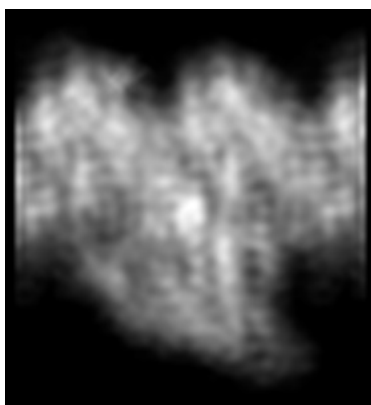
No raw map or half-maps were deposited for this entry and therefore no images, graphs, etc. pertaining to the raw map can be shown.

### 6.1 Orthogonal projections [i](#)

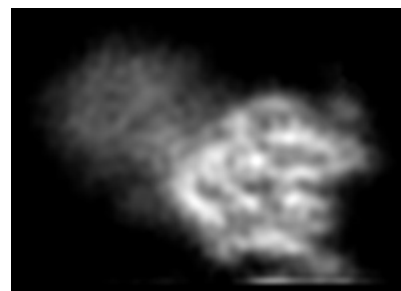
#### 6.1.1 Primary map



X



Y



Z

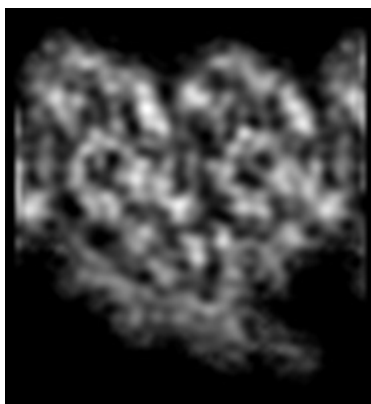
The images above show the map projected in three orthogonal directions.

### 6.2 Central slices [i](#)

#### 6.2.1 Primary map



X Index: 40



Y Index: 29



Z Index: 37

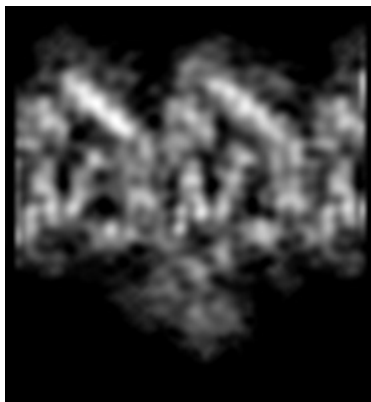
The images above show central slices of the map in three orthogonal directions.

## 6.3 Largest variance slices [i](#)

### 6.3.1 Primary map



X Index: 56



Y Index: 24



Z Index: 45

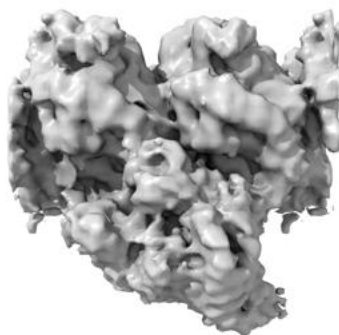
The images above show the largest variance slices of the map in three orthogonal directions.

## 6.4 Orthogonal surface views [i](#)

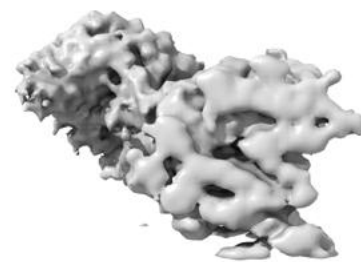
### 6.4.1 Primary map



X



Y



Z

The images above show the 3D surface view of the map at the recommended contour level 0.05. These images, in conjunction with the slice images, may facilitate assessment of whether an appropriate contour level has been provided.

## 6.5 Mask visualisation

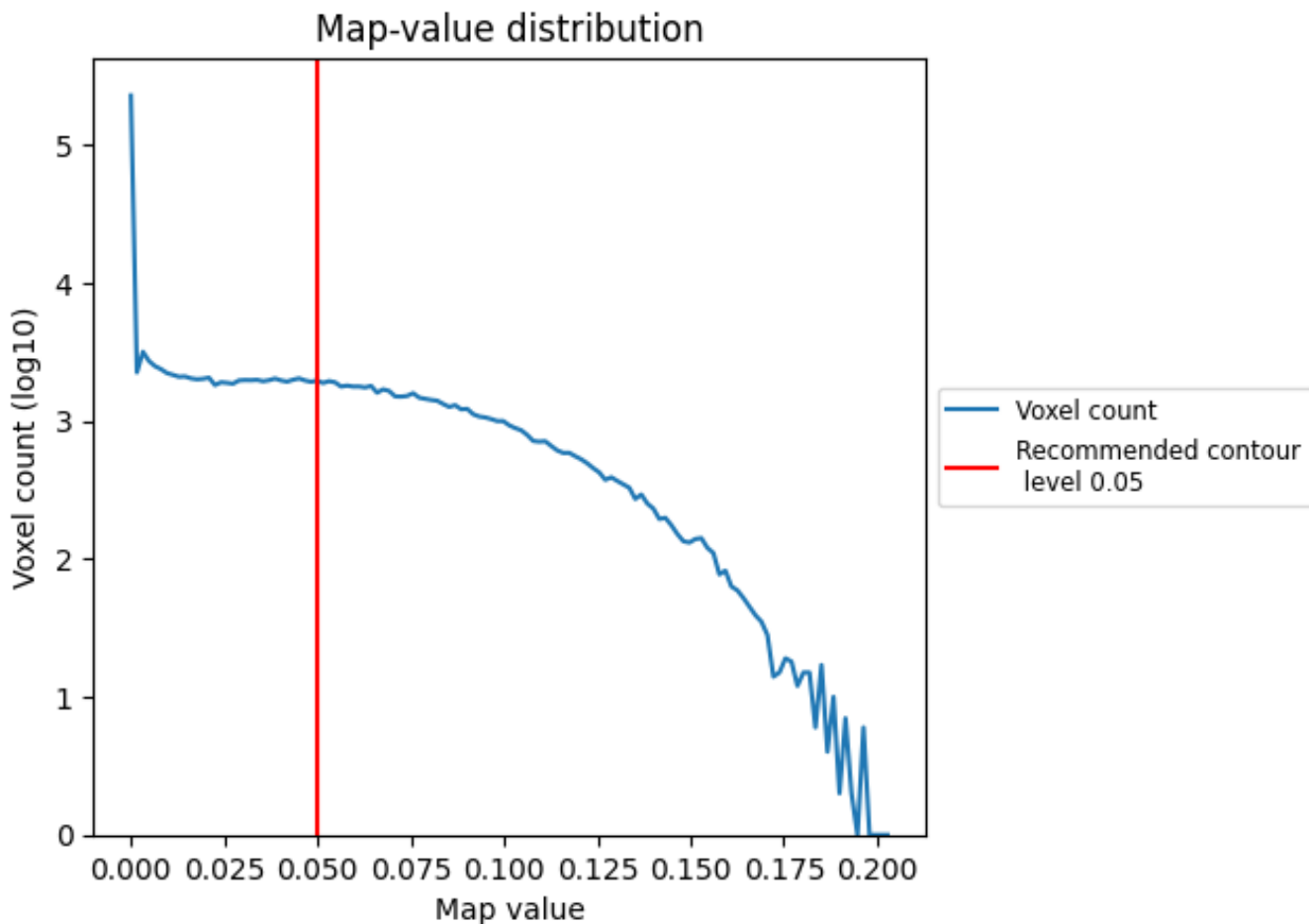
This section was not generated. No masks/segmentation were deposited.



## 7 Map analysis [i](#)

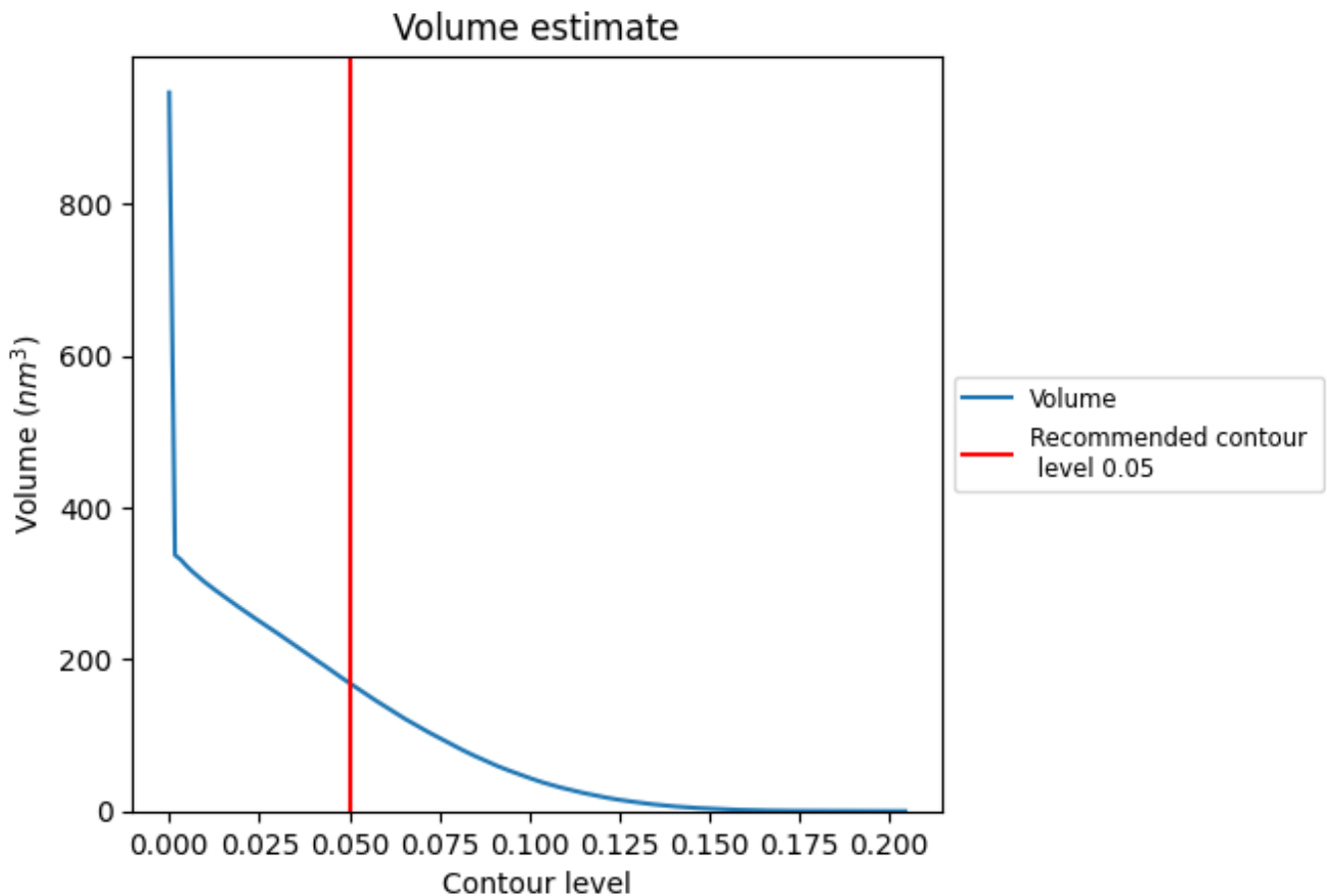
This section contains the results of statistical analysis of the map.

### 7.1 Map-value distribution [i](#)



The map-value distribution is plotted in 128 intervals along the x-axis. The y-axis is logarithmic. A spike in this graph at zero usually indicates that the volume has been masked.

## 7.2 Volume estimate [i](#)



The volume at the recommended contour level is 169 nm<sup>3</sup>; this corresponds to an approximate mass of 153 kDa.

The volume estimate graph shows how the enclosed volume varies with the contour level. The recommended contour level is shown as a vertical line and the intersection between the line and the curve gives the volume of the enclosed surface at the given level.

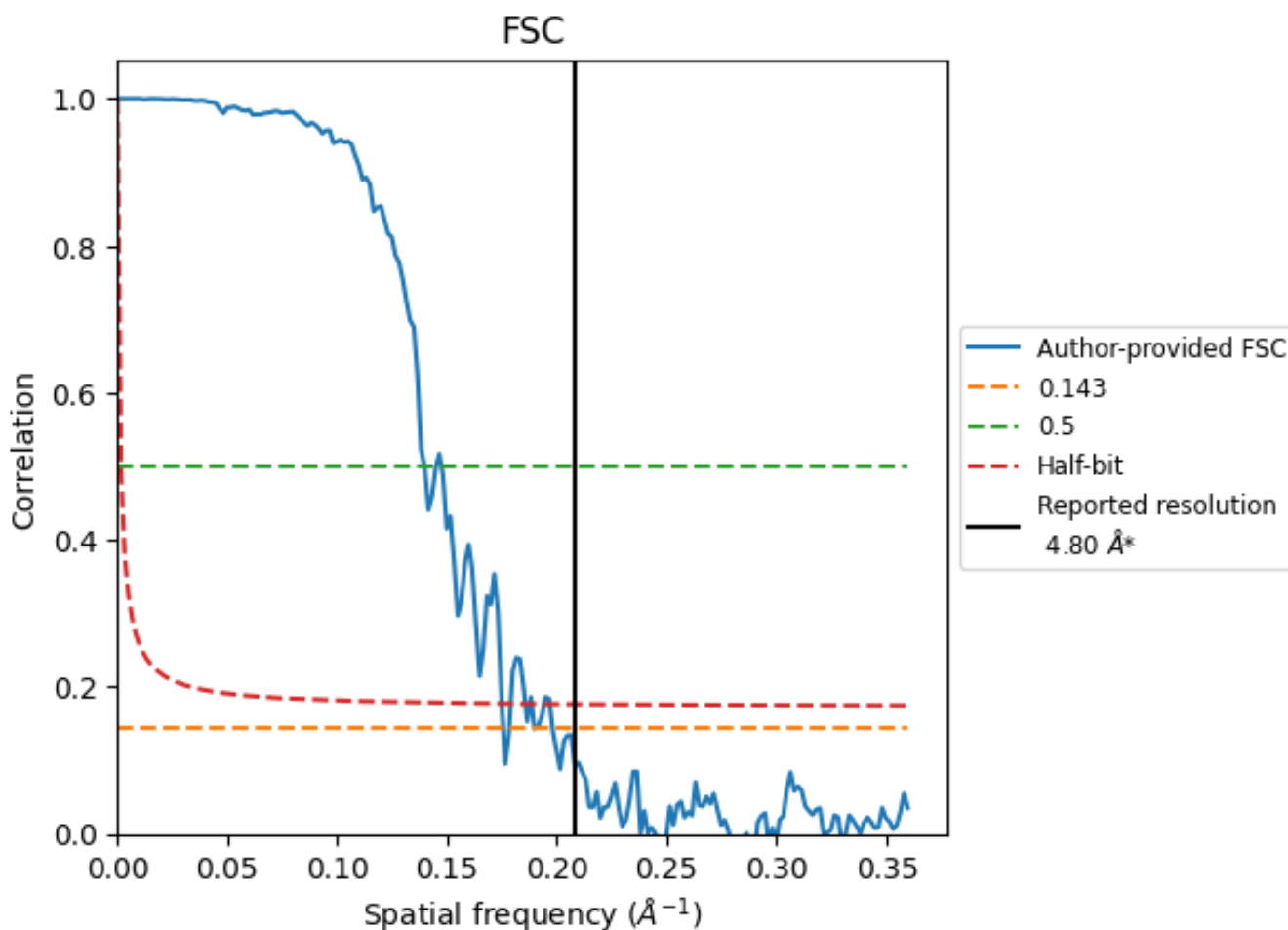
## 7.3 Rotationally averaged power spectrum [i](#)

This section was not generated. The rotationally averaged power spectrum is only generated for cubic maps.

## 8 Fourier-Shell correlation [i](#)

Fourier-Shell Correlation (FSC) is the most commonly used method to estimate the resolution of single-particle and subtomogram-averaged maps. The shape of the curve depends on the imposed symmetry, mask and whether or not the two 3D reconstructions used were processed from a common reference. The reported resolution is shown as a black line. A curve is displayed for the half-bit criterion in addition to lines showing the 0.143 gold standard cut-off and 0.5 cut-off.

### 8.1 FSC [i](#)



\*Reported resolution corresponds to spatial frequency of 0.208 Å<sup>-1</sup>

## 8.2 Resolution estimates [i](#)

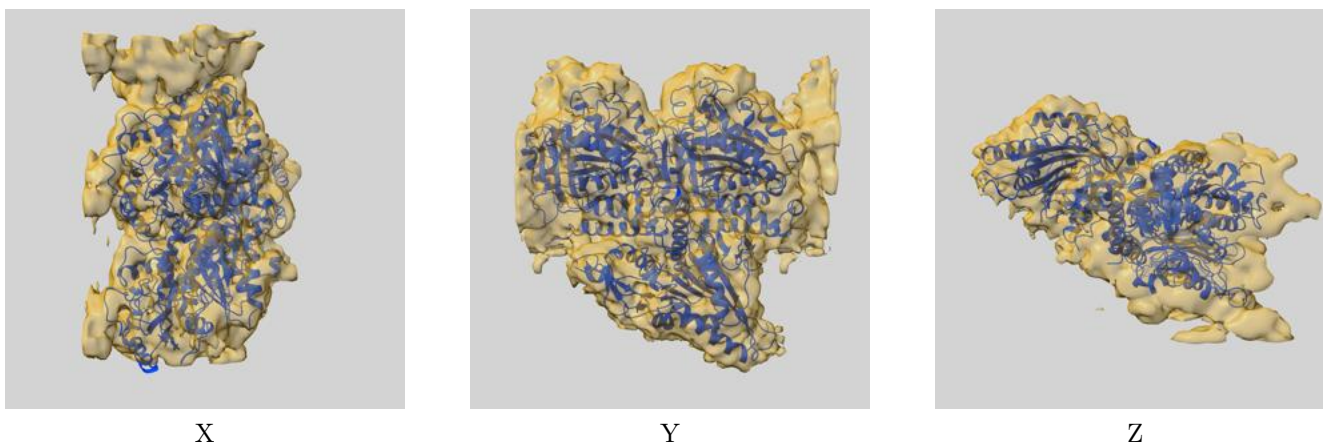
Resolution estimate (Å)	Estimation criterion (FSC cut-off)		
	0.143	0.5	Half-bit
Reported by author	4.80	-	-
Author-provided FSC curve	5.70	7.16	5.72
Unmasked-calculated*	-	-	-

\*Resolution estimate based on FSC curve calculated by comparison of deposited half-maps. The value from author-provided FSC intersecting FSC 0.143 CUT-OFF 5.70 differs from the reported value 4.8 by more than 10 %

## 9 Map-model fit [i](#)

This section contains information regarding the fit between EMDB map EMD-3803 and PDB model 5OGC. Per-residue inclusion information can be found in section [3](#) on page [8](#).

### 9.1 Map-model overlay [i](#)

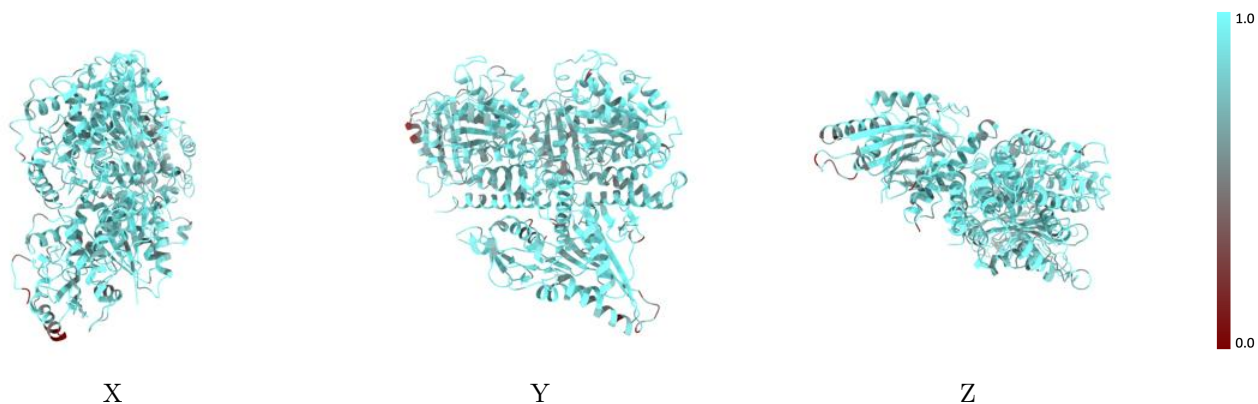


The images above show the 3D surface view of the map at the recommended contour level 0.05 at 50% transparency in yellow overlaid with a ribbon representation of the model coloured in blue. These images allow for the visual assessment of the quality of fit between the atomic model and the map.

## 9.2 Q-score mapped to coordinate model [i](#)

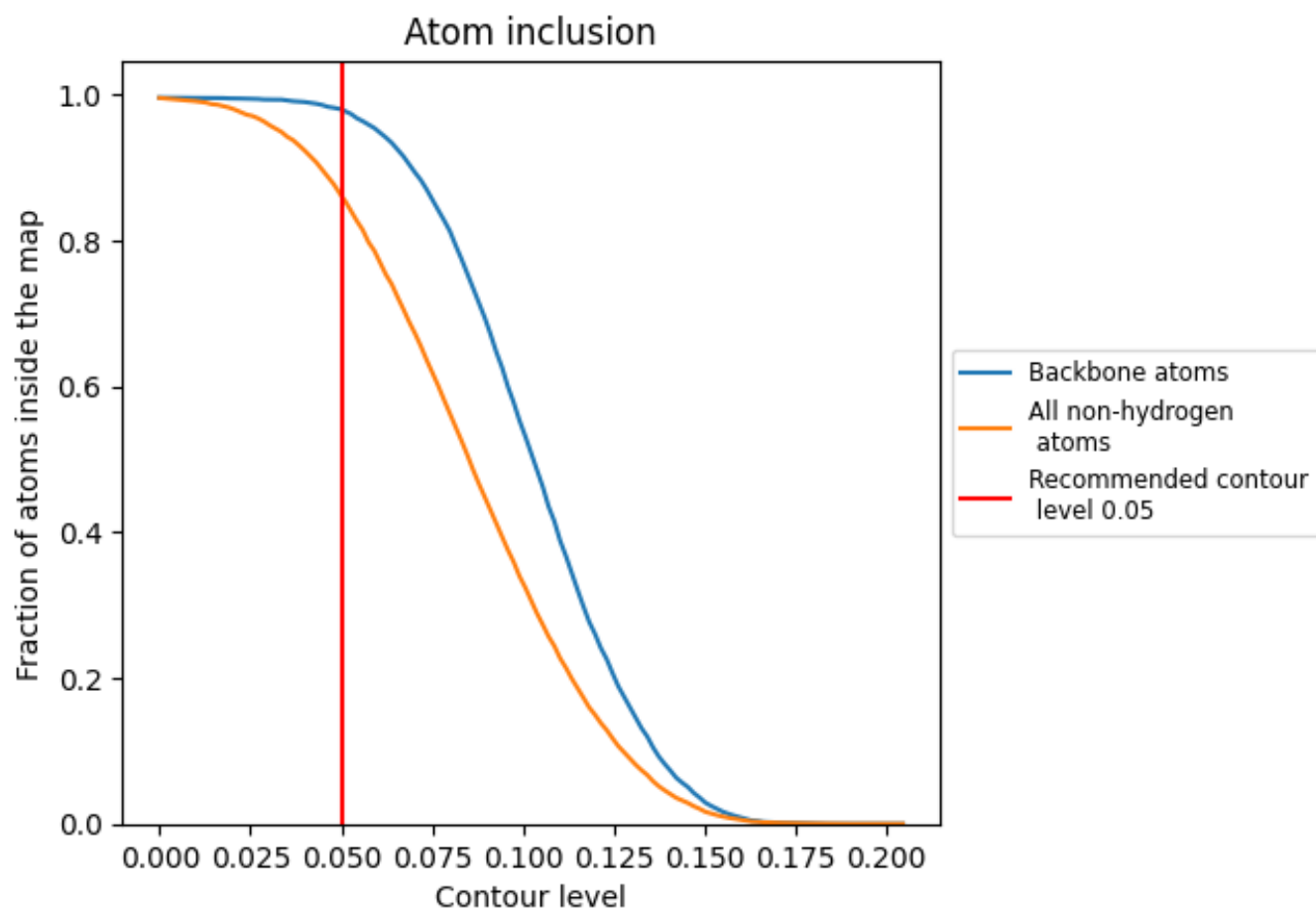
This section was not generated.

## 9.3 Atom inclusion mapped to coordinate model [i](#)



The images above show the model with each residue coloured according to its atom inclusion. This shows to what extent they are inside the map at the recommended contour level (0.05).





## 9.4 Atom inclusion [i](#)



At the recommended contour level, 98% of all backbone atoms, 86% of all non-hydrogen atoms, are inside the map.

## 9.5 Map-model fit summary [i](#)

The table lists the average atom inclusion at the recommended contour level (0.05) and Q-score for the entire model and for each chain.

Chain	Atom inclusion
All	 0.8617
A	 0.8492
B	 0.8804
K	 0.8527

