



Full wwPDB X-ray Structure Validation Report ⓘ

Jan 7, 2024 – 09:17 pm GMT

PDB ID : 5O9Y
Title : Crystal structure of ScGas2 in complex with compound 11
Authors : Delso, I.; Valero-Gonzalez, J.; Gomollon-Bel, F.; Castro-Lopez, J.; Fang, W.;
Navratilova, I.; Van Aalten, D.; Tejero, T.; Merino, P.; Hurtado-Guerrero, R.
Deposited on : 2017-06-20
Resolution : 1.57 Å(reported)

This is a Full wwPDB X-ray Structure Validation Report for a publicly released PDB entry.

We welcome your comments at validation@mail.wwpdb.org

A user guide is available at

<https://www.wwpdb.org/validation/2017/XrayValidationReportHelp>

with specific help available everywhere you see the ⓘ symbol.

The types of validation reports are described at

<http://www.wwpdb.org/validation/2017/FAQs#types>.

The following versions of software and data (see [references ⓘ](#)) were used in the production of this report:

MolProbity : 4.02b-467
Mogul : 1.8.4, CSD as541be (2020)
Xtriage (Phenix) : 1.13
EDS : 2.36
buster-report : 1.1.7 (2018)
Percentile statistics : 20191225.v01 (using entries in the PDB archive December 25th 2019)
Refmac : 5.8.0158
CCP4 : 7.0.044 (Gargrove)
Ideal geometry (proteins) : Engh & Huber (2001)
Ideal geometry (DNA, RNA) : Parkinson et al. (1996)
Validation Pipeline (wwPDB-VP) : 2.36

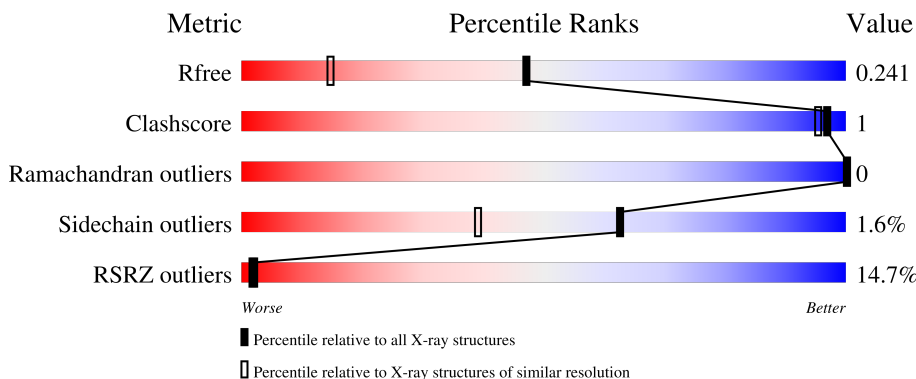
1 Overall quality at a glance

The following experimental techniques were used to determine the structure:

X-RAY DIFFRACTION

The reported resolution of this entry is 1.57 Å.

Percentile scores (ranging between 0-100) for global validation metrics of the entry are shown in the following graphic. The table shows the number of entries on which the scores are based.



Metric	Whole archive (#Entries)	Similar resolution (#Entries, resolution range(Å))
R_{free}	130704	5534 (1.60-1.56)
Clashscore	141614	5861 (1.60-1.56)
Ramachandran outliers	138981	5708 (1.60-1.56)
Sidechain outliers	138945	5703 (1.60-1.56)
RSRZ outliers	127900	5431 (1.60-1.56)

The table below summarises the geometric issues observed across the polymeric chains and their fit to the electron density. The red, orange, yellow and green segments of the lower bar indicate the fraction of residues that contain outliers for ≥ 3 , 2, 1 and 0 types of geometric quality criteria respectively. A grey segment represents the fraction of residues that are not modelled. The numeric value for each fraction is indicated below the corresponding segment, with a dot representing fractions $\leq 5\%$. The upper red bar (where present) indicates the fraction of residues that have poor fit to the electron density. The numeric value is given above the bar.

Mol	Chain	Length	Quality of chain
1	A	555	

The following table lists non-polymeric compounds, carbohydrate monomers and non-standard residues in protein, DNA, RNA chains that are outliers for geometric or electron-density-fit criteria:

Mol	Type	Chain	Res	Chirality	Geometry	Clashes	Electron density
3	EDO	A	604	-	-	-	X

Continued on next page...

Continued from previous page...

Mol	Type	Chain	Res	Chirality	Geometry	Clashes	Electron density
4	SO4	A	613	-	-	-	X

2 Entry composition [i](#)

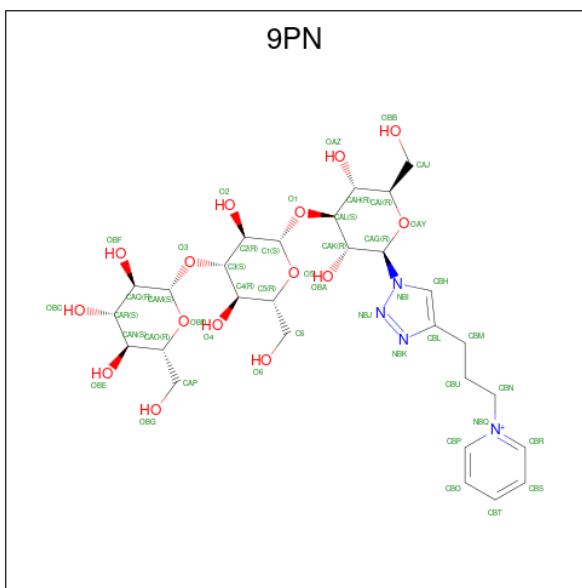
There are 5 unique types of molecules in this entry. The entry contains 3804 atoms, of which 0 are hydrogens and 0 are deuteriums.

In the tables below, the ZeroOcc column contains the number of atoms modelled with zero occupancy, the AltConf column contains the number of residues with at least one atom in alternate conformation and the Trace column contains the number of residues modelled with at most 2 atoms.

- Molecule 1 is a protein called 1,3-beta-glucanosyltransferase GAS2.

Mol	Chain	Residues	Atoms					ZeroOcc	AltConf	Trace
			Total	C	N	O	S			
1	A	429	3423	2184	551	665	23	18	0	0

- Molecule 2 is (2 {R},3 {S},4 {S},5 {R},6 {S})-2-(hydroxymethyl)-6-[(2 {R},3 {R},4 {S},5 {R},6 {S})-2-(hydroxymethyl)-6-[(2 {R},3 {R},4 {S},5 {R},6 {R})-2-(hydroxymethyl)-3,5-bis(oxidanyl)-6-[4-(3-pyridin-1-ium-1-ylpropyl)-1,2,3-triazol-1-yl]oxan-4-yl]oxy-3,5-bis(oxidanyl)oxan-4-yl]oxy-oxane-3,4,5-triol (three-letter code: 9PN) (formula: C₂₈H₄₃N₄O₁₅).



Mol	Chain	Residues	Atoms				ZeroOcc	AltConf
			Total	C	N	O		
2	A	1	47	28	4	15	0	0

- Molecule 3 is 1,2-ETHANEDIOL (three-letter code: EDO) (formula: C₂H₆O₂).



Mol	Chain	Residues	Atoms	ZeroOcc	AltConf
3	A	1	Total C O 4 2 2	0	0
3	A	1	Total C O 4 2 2	0	0
3	A	1	Total C O 4 2 2	0	0
3	A	1	Total C O 4 2 2	0	0
3	A	1	Total C O 4 2 2	0	0
3	A	1	Total C O 4 2 2	0	0
3	A	1	Total C O 4 2 2	0	0
3	A	1	Total C O 4 2 2	0	0
3	A	1	Total C O 4 2 2	0	0

- Molecule 4 is SULFATE ION (three-letter code: SO4) (formula: O₄S).



Mol	Chain	Residues	Atoms	ZeroOcc	AltConf
4	A	1	Total O S 5 4 1	0	0
4	A	1	Total O S 5 4 1	0	0
4	A	1	Total O S 5 4 1	0	0

- Molecule 5 is water.

Mol	Chain	Residues	Atoms	ZeroOcc	AltConf
5	A	283	Total O 283 283	0	0

4 Data and refinement statistics

Property	Value	Source
Space group	P 21 21 21	Depositor
Cell constants a, b, c, α , β , γ	49.92Å 70.38Å 150.07Å 90.00° 90.00° 90.00°	Depositor
Resolution (Å)	150.07 – 1.57 19.93 – 1.57	Depositor EDS
% Data completeness (in resolution range)	94.6 (150.07-1.57) 94.7 (19.93-1.57)	Depositor EDS
R_{merge}	0.08	Depositor
R_{sym}	(Not available)	Depositor
$\langle I/\sigma(I) \rangle$ ¹	2.12 (at 1.57Å)	Xtrriage
Refinement program	REFMAC 5.8.0107	Depositor
R, R_{free}	0.221 , 0.233 0.227 , 0.241	Depositor DCC
R_{free} test set	2136 reflections (3.02%)	wwPDB-VP
Wilson B-factor (Å ²)	21.7	Xtrriage
Anisotropy	0.269	Xtrriage
Bulk solvent k_{sol} (e/Å ³), B_{sol} (Å ²)	0.39 , 42.4	EDS
L-test for twinning ²	$\langle L \rangle = 0.47$, $\langle L^2 \rangle = 0.30$	Xtrriage
Estimated twinning fraction	No twinning to report.	Xtrriage
F_o, F_c correlation	0.95	EDS
Total number of atoms	3804	wwPDB-VP
Average B, all atoms (Å ²)	25.0	wwPDB-VP

Xtrriage's analysis on translational NCS is as follows: *The largest off-origin peak in the Patterson function is 5.06% of the height of the origin peak. No significant pseudotranslation is detected.*

¹Intensities estimated from amplitudes.

²Theoretical values of $\langle |L| \rangle$, $\langle L^2 \rangle$ for acentric reflections are 0.5, 0.333 respectively for untwinned datasets, and 0.375, 0.2 for perfectly twinned datasets.

5 Model quality [i](#)

5.1 Standard geometry [i](#)

Bond lengths and bond angles in the following residue types are not validated in this section: 9PN, EDO, SO4

The Z score for a bond length (or angle) is the number of standard deviations the observed value is removed from the expected value. A bond length (or angle) with $|Z| > 5$ is considered an outlier worth inspection. RMSZ is the root-mean-square of all Z scores of the bond lengths (or angles).

Mol	Chain	Bond lengths		Bond angles	
		RMSZ	# Z >5	RMSZ	# Z >5
1	A	0.45	2/3505 (0.1%)	0.67	3/4739 (0.1%)

All (2) bond length outliers are listed below:

Mol	Chain	Res	Type	Atoms	Z	Observed(Å)	Ideal(Å)
1	A	414	TYR	CB-CG	14.94	1.74	1.51
1	A	412	GLU	CB-CG	6.24	1.64	1.52

All (3) bond angle outliers are listed below:

Mol	Chain	Res	Type	Atoms	Z	Observed(°)	Ideal(°)
1	A	414	TYR	CB-CG-CD1	17.76	131.66	121.00
1	A	414	TYR	CB-CG-CD2	-17.63	110.42	121.00
1	A	414	TYR	CA-CB-CG	-8.97	96.35	113.40

There are no chirality outliers.

There are no planarity outliers.

5.2 Too-close contacts [i](#)

In the following table, the Non-H and H(model) columns list the number of non-hydrogen atoms and hydrogen atoms in the chain respectively. The H(added) column lists the number of hydrogen atoms added and optimized by MolProbity. The Clashes column lists the number of clashes within the asymmetric unit, whereas Symm-Clashes lists symmetry-related clashes.

Mol	Chain	Non-H	H(model)	H(added)	Clashes	Symm-Clashes
1	A	3423	0	3261	6	0
2	A	47	0	0	0	0
3	A	36	0	54	0	0

Continued on next page...

Continued from previous page...

Mol	Chain	Non-H	H(model)	H(added)	Clashes	Symm-Clashes
4	A	15	0	0	0	0
5	A	283	0	0	0	0
All	All	3804	0	3315	6	0

The all-atom clashscore is defined as the number of clashes found per 1000 atoms (including hydrogen atoms). The all-atom clashscore for this structure is 1.

All (6) close contacts within the same asymmetric unit are listed below, sorted by their clash magnitude.

Atom-1	Atom-2	Interatomic distance (Å)	Clash overlap (Å)
1:A:31:GLU:CA	1:A:31:GLU:OE1	2.64	0.45
1:A:42:LYS:HE3	1:A:348:ILE:HD11	1.98	0.45
1:A:404:PHE:HB2	1:A:472:ASN:HD21	1.83	0.43
1:A:31:GLU:OE1	1:A:31:GLU:HA	2.20	0.42
1:A:282:ARG:HA	1:A:283:PRO:C	2.41	0.41
1:A:241:ILE:HD11	1:A:264:PHE:CZ	2.56	0.41

There are no symmetry-related clashes.

5.3 Torsion angles [i](#)

5.3.1 Protein backbone [i](#)

In the following table, the Percentiles column shows the percent Ramachandran outliers of the chain as a percentile score with respect to all X-ray entries followed by that with respect to entries of similar resolution.

The Analysed column shows the number of residues for which the backbone conformation was analysed, and the total number of residues.

Mol	Chain	Analysed	Favoured	Allowed	Outliers	Percentiles
1	A	420/555 (76%)	409 (97%)	11 (3%)	0	100 100

There are no Ramachandran outliers to report.

5.3.2 Protein sidechains [i](#)

In the following table, the Percentiles column shows the percent sidechain outliers of the chain as a percentile score with respect to all X-ray entries followed by that with respect to entries of similar resolution.

The Analysed column shows the number of residues for which the sidechain conformation was analysed, and the total number of residues.

Mol	Chain	Analysed	Rotameric	Outliers	Percentiles
1	A	377/485 (78%)	371 (98%)	6 (2%)	62 39

All (6) residues with a non-rotameric sidechain are listed below:

Mol	Chain	Res	Type
1	A	31	GLU
1	A	32	LYS
1	A	135	GLU
1	A	168	LEU
1	A	365	VAL
1	A	448	LEU

Sometimes sidechains can be flipped to improve hydrogen bonding and reduce clashes. There are no such sidechains identified.

5.3.3 RNA [i](#)

There are no RNA molecules in this entry.

5.4 Non-standard residues in protein, DNA, RNA chains [i](#)

There are no non-standard protein/DNA/RNA residues in this entry.

5.5 Carbohydrates [i](#)

There are no monosaccharides in this entry.

5.6 Ligand geometry [i](#)

13 ligands are modelled in this entry.

In the following table, the Counts columns list the number of bonds (or angles) for which Mogul statistics could be retrieved, the number of bonds (or angles) that are observed in the model and the number of bonds (or angles) that are defined in the Chemical Component Dictionary. The Link column lists molecule types, if any, to which the group is linked. The Z score for a bond length (or angle) is the number of standard deviations the observed value is removed from the expected value. A bond length (or angle) with $|Z| > 2$ is considered an outlier worth inspection. RMSZ is the root-mean-square of all Z scores of the bond lengths (or angles).

Mol	Type	Chain	Res	Link	Bond lengths			Bond angles		
					Counts	RMSZ	# Z > 2	Counts	RMSZ	# Z > 2
3	EDO	A	604	-	3,3,3	0.42	0	2,2,2	0.33	0
3	EDO	A	602	-	3,3,3	0.40	0	2,2,2	0.35	0
3	EDO	A	605	-	3,3,3	0.46	0	2,2,2	0.28	0
3	EDO	A	609	-	3,3,3	0.45	0	2,2,2	0.22	0
3	EDO	A	610	-	3,3,3	0.44	0	2,2,2	0.34	0
4	SO4	A	612	-	4,4,4	0.30	0	6,6,6	0.06	0
3	EDO	A	608	-	3,3,3	0.46	0	2,2,2	0.28	0
3	EDO	A	606	-	3,3,3	0.46	0	2,2,2	0.29	0
3	EDO	A	607	-	3,3,3	0.45	0	2,2,2	0.33	0
4	SO4	A	613	-	4,4,4	0.31	0	6,6,6	0.07	0
3	EDO	A	603	-	3,3,3	0.45	0	2,2,2	0.33	0
4	SO4	A	611	-	4,4,4	0.30	0	6,6,6	0.11	0
2	9PN	A	601	-	49,51,51	1.53	5 (10%)	62,73,73	0.97	6 (9%)

In the following table, the Chirals column lists the number of chiral outliers, the number of chiral centers analysed, the number of these observed in the model and the number defined in the Chemical Component Dictionary. Similar counts are reported in the Torsion and Rings columns. '-' means no outliers of that kind were identified.

Mol	Type	Chain	Res	Link	Chirals	Torsions	Rings
3	EDO	A	604	-	-	1/1/1/1	-
3	EDO	A	602	-	-	0/1/1/1	-
3	EDO	A	605	-	-	0/1/1/1	-
3	EDO	A	609	-	-	1/1/1/1	-
3	EDO	A	610	-	-	1/1/1/1	-
3	EDO	A	608	-	-	1/1/1/1	-
3	EDO	A	606	-	-	1/1/1/1	-
3	EDO	A	607	-	-	0/1/1/1	-
3	EDO	A	603	-	-	0/1/1/1	-
2	9PN	A	601	-	-	9/20/84/84	0/5/5/5

All (5) bond length outliers are listed below:

Mol	Chain	Res	Type	Atoms	Z	Observed(Å)	Ideal(Å)
2	A	601	9PN	NBK-NBJ	-7.23	1.21	1.34
2	A	601	9PN	NBJ-NBI	-4.77	1.26	1.34
2	A	601	9PN	CBR-NBQ	3.26	1.42	1.34
2	A	601	9PN	CBP-NBQ	2.77	1.41	1.34
2	A	601	9PN	CBH-CBL	-2.46	1.32	1.36

All (6) bond angle outliers are listed below:

Mol	Chain	Res	Type	Atoms	Z	Observed(°)	Ideal(°)
2	A	601	9PN	CBN-CBU-CBM	-2.84	103.69	111.72
2	A	601	9PN	CAI-OAY-CAG	2.52	113.12	108.81
2	A	601	9PN	CBH-CBL-NBK	-2.44	107.71	111.34
2	A	601	9PN	CBL-CBH-NBI	-2.36	103.70	107.35
2	A	601	9PN	OAY-CAG-NBI	-2.21	100.94	107.60
2	A	601	9PN	CBU-CBM-CBL	-2.11	106.49	113.11

There are no chirality outliers.

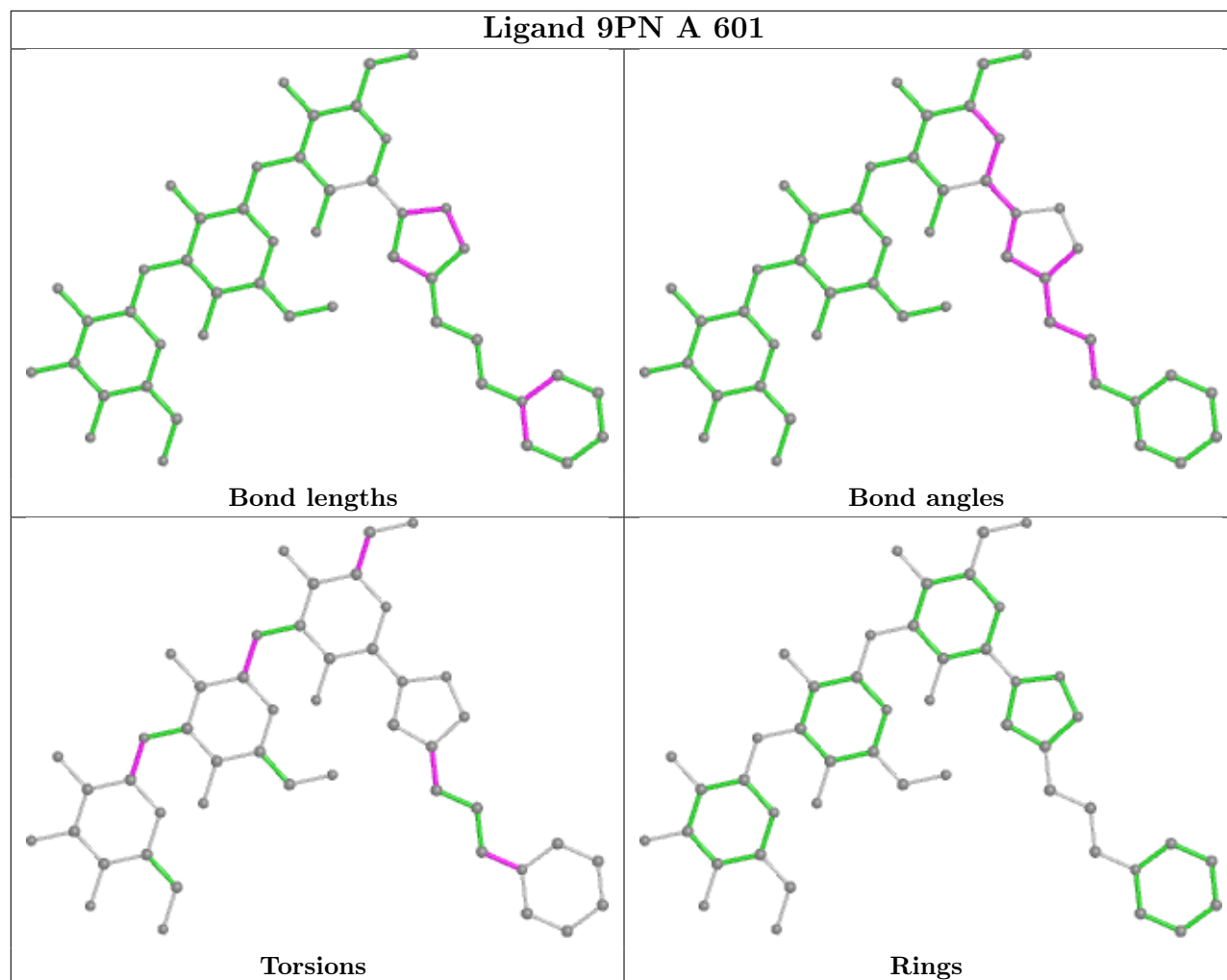
All (14) torsion outliers are listed below:

Mol	Chain	Res	Type	Atoms
2	A	601	9PN	OAY-CAI-CAJ-OBB
2	A	601	9PN	CAH-CAI-CAJ-OBB
2	A	601	9PN	CBU-CBN-NBQ-CBP
2	A	601	9PN	CBU-CBN-NBQ-CBR
3	A	604	EDO	O1-C1-C2-O2
3	A	606	EDO	O1-C1-C2-O2
3	A	608	EDO	O1-C1-C2-O2
3	A	609	EDO	O1-C1-C2-O2
3	A	610	EDO	O1-C1-C2-O2
2	A	601	9PN	CAQ-CAM-O3-C3
2	A	601	9PN	OBD-CAM-O3-C3
2	A	601	9PN	NBK-CBL-CBM-CBU
2	A	601	9PN	C2-C1-O1-CAL
2	A	601	9PN	O5-C1-O1-CAL

There are no ring outliers.

No monomer is involved in short contacts.

The following is a two-dimensional graphical depiction of Mogul quality analysis of bond lengths, bond angles, torsion angles, and ring geometry for all instances of the Ligand of Interest. In addition, ligands with molecular weight > 250 and outliers as shown on the validation Tables will also be included. For torsion angles, if less than 5% of the Mogul distribution of torsion angles is within 10 degrees of the torsion angle in question, then that torsion angle is considered an outlier. Any bond that is central to one or more torsion angles identified as an outlier by Mogul will be highlighted in the graph. For rings, the root-mean-square deviation (RMSD) between the ring in question and similar rings identified by Mogul is calculated over all ring torsion angles. If the average RMSD is greater than 60 degrees and the minimal RMSD between the ring in question and any Mogul-identified rings is also greater than 60 degrees, then that ring is considered an outlier. The outliers are highlighted in purple. The color gray indicates Mogul did not find sufficient equivalents in the CSD to analyse the geometry.



5.7 Other polymers [\(i\)](#)

There are no such residues in this entry.

5.8 Polymer linkage issues [\(i\)](#)

There are no chain breaks in this entry.

6 Fit of model and data

6.1 Protein, DNA and RNA chains

In the following table, the column labelled ‘#RSRZ> 2’ contains the number (and percentage) of RSRZ outliers, followed by percent RSRZ outliers for the chain as percentile scores relative to all X-ray entries and entries of similar resolution. The OWAB column contains the minimum, median, 95th percentile and maximum values of the occupancy-weighted average B-factor per residue. The column labelled ‘Q< 0.9’ lists the number of (and percentage) of residues with an average occupancy less than 0.9.

Mol	Chain	Analysed	<RSRZ>	#RSRZ>2	OWAB(Å ²)	Q<0.9
1	A	429/555 (77%)	0.86	63 (14%) 2 2	14, 23, 40, 50	6 (1%)

All (63) RSRZ outliers are listed below:

Mol	Chain	Res	Type	RSRZ
1	A	404	PHE	15.4
1	A	64	SER	9.9
1	A	460	GLY	7.8
1	A	355	THR	7.8
1	A	489	CYS	7.6
1	A	77	THR	6.4
1	A	354	LEU	5.4
1	A	323	ASP	5.1
1	A	353	TYR	4.9
1	A	462	ASN	4.9
1	A	313	GLU	4.7
1	A	324	ASN	4.6
1	A	295	ASN	4.4
1	A	465	HIS	4.4
1	A	63	ARG	4.2
1	A	387	ARG	3.6
1	A	459	ILE	3.5
1	A	258	ARG	3.4
1	A	348	ILE	3.3
1	A	411	TYR	3.3
1	A	344	ASP	3.1
1	A	47	GLU	3.1
1	A	396	ILE	3.0
1	A	410	LYS	3.0
1	A	259	GLU	2.8
1	A	420	SER	2.8
1	A	32	LYS	2.8

Continued on next page...

Continued from previous page...

Mol	Chain	Res	Type	RSRZ
1	A	409	GLY	2.8
1	A	395	GLU	2.8
1	A	78	SER	2.6
1	A	177	VAL	2.6
1	A	366	GLU	2.6
1	A	456	TYR	2.6
1	A	342	LYS	2.5
1	A	393	LEU	2.5
1	A	392	CYS	2.5
1	A	296	LYS	2.5
1	A	318	VAL	2.5
1	A	461	ALA	2.5
1	A	327	VAL	2.4
1	A	388	SER	2.4
1	A	346	LYS	2.4
1	A	266	GLY	2.4
1	A	416	SER	2.4
1	A	463	ASP	2.3
1	A	36	ILE	2.3
1	A	286	PHE	2.3
1	A	481	GLN	2.3
1	A	190	VAL	2.2
1	A	377	ALA	2.2
1	A	98	MET	2.2
1	A	83	LEU	2.2
1	A	31	GLU	2.2
1	A	365	VAL	2.2
1	A	478	GLU	2.2
1	A	352	GLU	2.1
1	A	325	ASP	2.1
1	A	262	LYS	2.1
1	A	292	LEU	2.1
1	A	338	LYS	2.1
1	A	30	PHE	2.0
1	A	225	LEU	2.0
1	A	314	ASN	2.0

6.2 Non-standard residues in protein, DNA, RNA chains

There are no non-standard protein/DNA/RNA residues in this entry.

6.3 Carbohydrates [i](#)

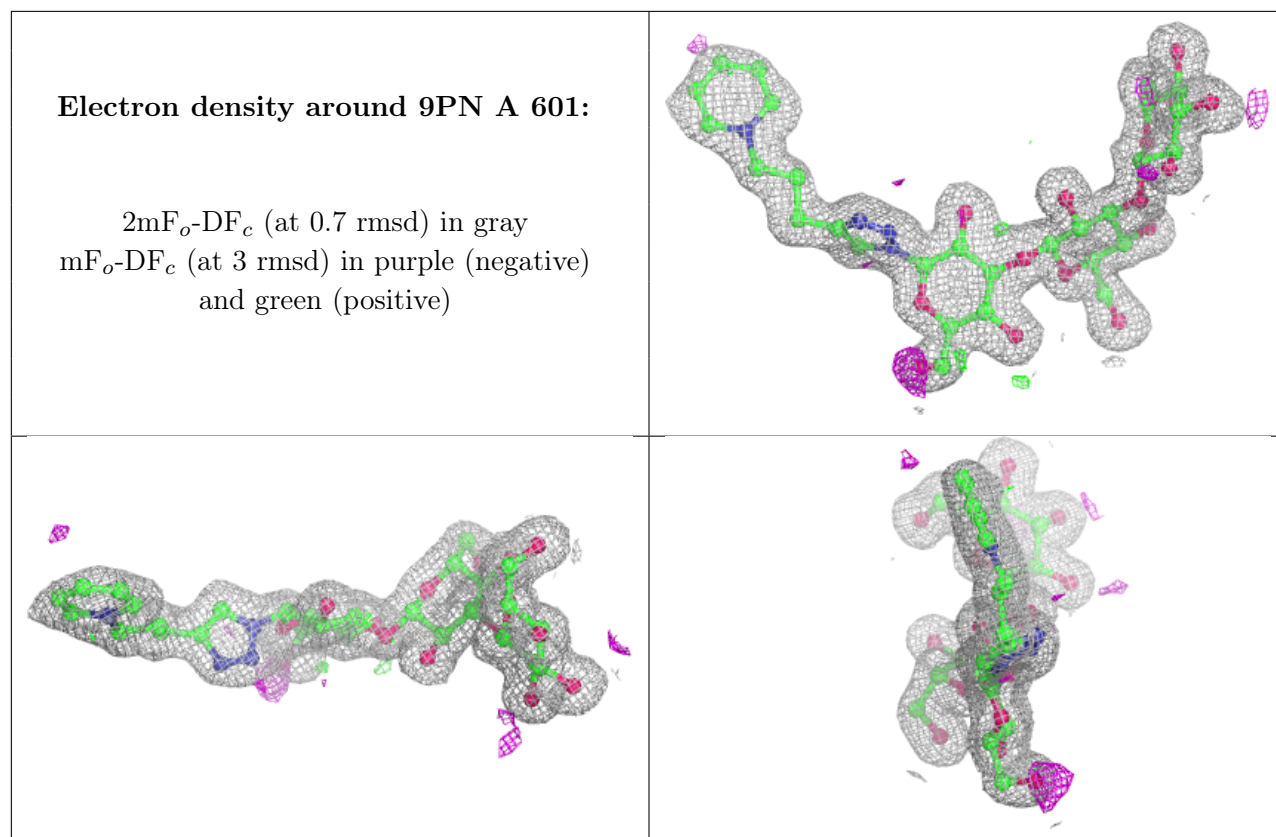
There are no monosaccharides in this entry.

6.4 Ligands [i](#)

In the following table, the Atoms column lists the number of modelled atoms in the group and the number defined in the chemical component dictionary. The B-factors column lists the minimum, median, 95th percentile and maximum values of B factors of atoms in the group. The column labelled 'Q< 0.9' lists the number of atoms with occupancy less than 0.9.

Mol	Type	Chain	Res	Atoms	RSCC	RSR	B-factors(Å ²)	Q<0.9
3	EDO	A	608	4/4	0.57	0.32	36,37,37,38	0
3	EDO	A	604	4/4	0.59	0.53	39,39,39,40	0
4	SO4	A	613	5/5	0.59	0.65	93,93,94,94	0
3	EDO	A	603	4/4	0.64	0.20	52,53,53,53	0
3	EDO	A	610	4/4	0.71	0.35	44,44,44,44	0
3	EDO	A	607	4/4	0.73	0.21	43,43,43,43	0
3	EDO	A	606	4/4	0.74	0.22	44,44,44,45	0
3	EDO	A	609	4/4	0.80	0.15	30,31,31,32	0
3	EDO	A	605	4/4	0.81	0.22	42,42,42,42	0
3	EDO	A	602	4/4	0.85	0.15	42,42,42,43	0
2	9PN	A	601	47/47	0.90	0.10	17,20,27,28	0
4	SO4	A	611	5/5	0.92	0.22	33,34,35,35	0
4	SO4	A	612	5/5	0.97	0.27	49,49,49,49	0

The following is a graphical depiction of the model fit to experimental electron density of all instances of the Ligand of Interest. In addition, ligands with molecular weight > 250 and outliers as shown on the geometry validation Tables will also be included. Each fit is shown from different orientation to approximate a three-dimensional view.



6.5 Other polymers [i](#)

There are no such residues in this entry.