



Full wwPDB X-ray Structure Validation Report ⓘ

Aug 22, 2020 – 02:16 PM BST

PDB ID : 5M0Z
Title : Cyclohexanone Monooxygenase from *T. municipale*: reduced enzyme bound to NADP+
Authors : Gomez-Castellanos, J.R.; Mattevi, A.
Deposited on : 2016-10-06
Resolution : 1.60 Å(reported)

This is a Full wwPDB X-ray Structure Validation Report for a publicly released PDB entry.

We welcome your comments at validation@mail.wwpdb.org

A user guide is available at

<https://www.wwpdb.org/validation/2017/XrayValidationReportHelp>

with specific help available everywhere you see the ⓘ symbol.

The following versions of software and data (see [references ⓘ](#)) were used in the production of this report:

MolProbity : 4.02b-467
Mogul : 1.8.5 (274361), CSD as541be (2020)
Xtriage (Phenix) : 1.13
EDS : 2.13.1
buster-report : 1.1.7 (2018)
Percentile statistics : 20191225.v01 (using entries in the PDB archive December 25th 2019)
Refmac : 5.8.0158
CCP4 : 7.0.044 (Gargrove)
Ideal geometry (proteins) : Engh & Huber (2001)
Ideal geometry (DNA, RNA) : Parkinson et al. (1996)
Validation Pipeline (wwPDB-VP) : 2.13.1

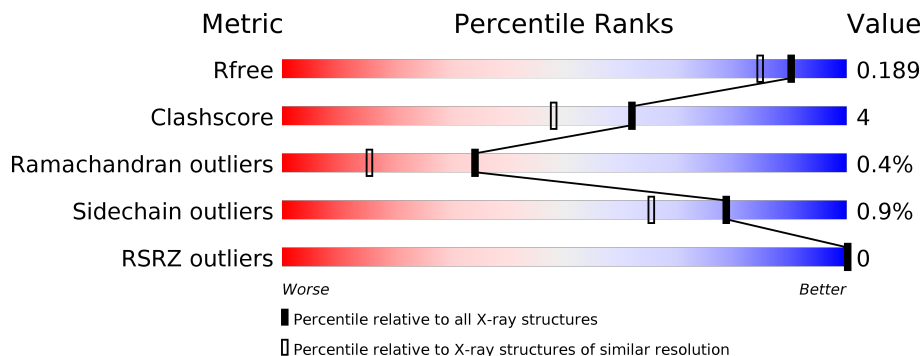
1 Overall quality at a glance

The following experimental techniques were used to determine the structure:

X-RAY DIFFRACTION

The reported resolution of this entry is 1.60 Å.

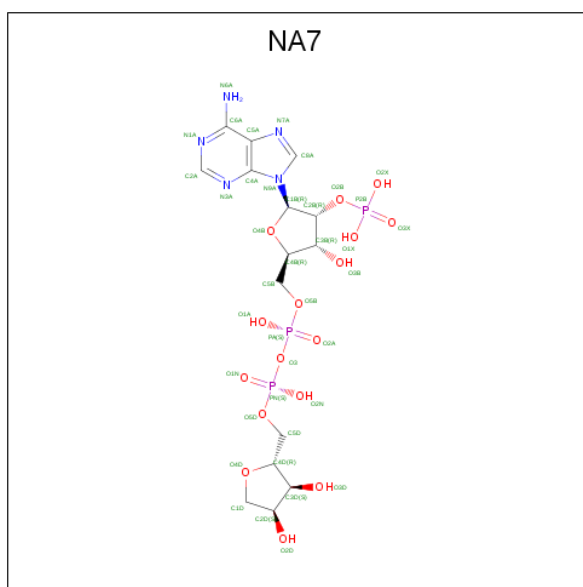
Percentile scores (ranging between 0-100) for global validation metrics of the entry are shown in the following graphic. The table shows the number of entries on which the scores are based.



Metric	Whole archive (#Entries)	Similar resolution (#Entries, resolution range(Å))
R_{free}	130704	3398 (1.60-1.60)
Clashscore	141614	3665 (1.60-1.60)
Ramachandran outliers	138981	3564 (1.60-1.60)
Sidechain outliers	138945	3563 (1.60-1.60)
RSRZ outliers	127900	3321 (1.60-1.60)

The table below summarises the geometric issues observed across the polymeric chains and their fit to the electron density. The red, orange, yellow and green segments on the lower bar indicate the fraction of residues that contain outliers for ≥ 3 , 2, 1 and 0 types of geometric quality criteria respectively. A grey segment represents the fraction of residues that are not modelled. The numeric value for each fraction is indicated below the corresponding segment, with a dot representing fractions $\leq 5\%$. The upper red bar (where present) indicates the fraction of residues that have poor fit to the electron density. The numeric value is given above the bar.

Mol	Chain	Length	Quality of chain
1	A	541	 89% 8% ..



Mol	Chain	Residues	Atoms					ZeroOcc	AltConf
			Total	C	N	O	P		
3	A	1	39	15	5	16	3	0	0

- Molecule 4 is GLYCEROL (three-letter code: GOL) (formula: C₃H₈O₃).



Mol	Chain	Residues	Atoms		ZeroOcc	AltConf
			Total	O		
4	A	1	6	3	0	0
4	A	1	6	3	0	0

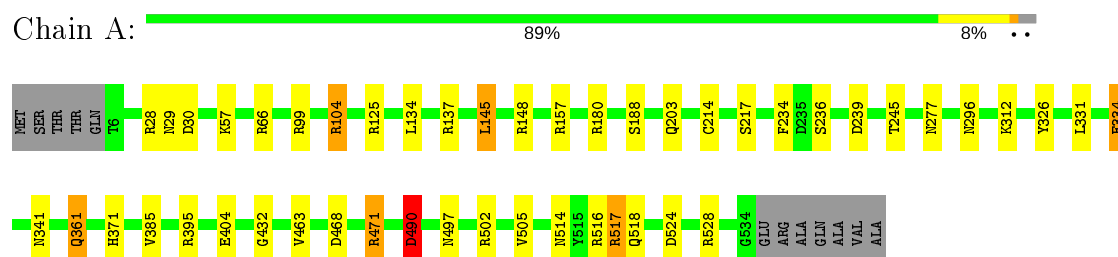
- Molecule 5 is water.

Mol	Chain	Residues	Atoms		ZeroOcc	AltConf
5	A	807	Total 807	O 807	0	0

3 Residue-property plots [i](#)

These plots are drawn for all protein, RNA, DNA and oligosaccharide chains in the entry. The first graphic for a chain summarises the proportions of the various outlier classes displayed in the second graphic. The second graphic shows the sequence view annotated by issues in geometry and electron density. Residues are color-coded according to the number of geometric quality criteria for which they contain at least one outlier: green = 0, yellow = 1, orange = 2 and red = 3 or more. A red dot above a residue indicates a poor fit to the electron density ($RSRZ > 2$). Stretches of 2 or more consecutive residues without any outlier are shown as a green connector. Residues present in the sample, but not in the model, are shown in grey.

- Molecule 1: Cyclohexanone Monooxygenase from *Thermocrispum municipale*.



4 Data and refinement statistics

Property	Value	Source
Space group	C 2 2 21	Depositor
Cell constants a, b, c, α , β , γ	69.21Å 114.68Å 155.44Å 90.00° 90.00° 90.00°	Depositor
Resolution (Å)	33.78 – 1.60 47.12 – 1.60	Depositor EDS
% Data completeness (in resolution range)	93.8 (33.78-1.60) 93.8 (47.12-1.60)	Depositor EDS
R_{merge}	0.06	Depositor
R_{sym}	(Not available)	Depositor
$\langle I/\sigma(I) \rangle$ ¹	1.85 (at 1.60Å)	Xtriage
Refinement program	REFMAC 5.8.0151	Depositor
R, R_{free}	0.148 , 0.177 0.162 , 0.189	Depositor DCC
R_{free} test set	2340 reflections (3.06%)	wwPDB-VP
Wilson B-factor (Å ²)	10.1	Xtriage
Anisotropy	0.046	Xtriage
Bulk solvent k_{sol} (e/Å ³), B_{sol} (Å ²)	0.38 , 45.8	EDS
L-test for twinning ²	$\langle L \rangle = 0.49$, $\langle L^2 \rangle = 0.33$	Xtriage
Estimated twinning fraction	0.033 for 1/2*h-1/2*k,-3/2*h-1/2*k,-l 0.038 for 1/2*h+1/2*k,3/2*h-1/2*k,-l	Xtriage
F_o, F_c correlation	0.96	EDS
Total number of atoms	5096	wwPDB-VP
Average B, all atoms (Å ²)	13.0	wwPDB-VP

Xtriage's analysis on translational NCS is as follows: *The largest off-origin peak in the Patterson function is 4.35% of the height of the origin peak. No significant pseudotranslation is detected.*

¹Intensities estimated from amplitudes.

²Theoretical values of $\langle |L| \rangle$, $\langle L^2 \rangle$ for acentric reflections are 0.5, 0.333 respectively for untwinned datasets, and 0.375, 0.2 for perfectly twinned datasets.

5 Model quality i

5.1 Standard geometry i

Bond lengths and bond angles in the following residue types are not validated in this section: GOL, NA7, FAD

The Z score for a bond length (or angle) is the number of standard deviations the observed value is removed from the expected value. A bond length (or angle) with $|Z| > 5$ is considered an outlier worth inspection. RMSZ is the root-mean-square of all Z scores of the bond lengths (or angles).

Mol	Chain	Bond lengths		Bond angles	
		RMSZ	# $ Z > 5$	RMSZ	# $ Z > 5$
1	A	1.07	6/4284 (0.1%)	1.16	28/5821 (0.5%)

All (6) bond length outliers are listed below:

Mol	Chain	Res	Type	Atoms	Z	Observed(Å)	Ideal(Å)
1	A	334	GLU	CD-OE2	9.34	1.35	1.25
1	A	125[A]	ARG	CZ-NH1	8.29	1.43	1.33
1	A	125[B]	ARG	CZ-NH1	8.29	1.43	1.33
1	A	404	GLU	CD-OE2	5.94	1.32	1.25
1	A	236	SER	CB-OG	-5.46	1.35	1.42
1	A	334	GLU	CD-OE1	5.11	1.31	1.25

All (28) bond angle outliers are listed below:

Mol	Chain	Res	Type	Atoms	Z	Observed(°)	Ideal(°)
1	A	125[A]	ARG	NE-CZ-NH2	-22.11	109.24	120.30
1	A	125[B]	ARG	NE-CZ-NH2	-22.11	109.24	120.30
1	A	125[A]	ARG	NE-CZ-NH1	12.10	126.35	120.30
1	A	125[B]	ARG	NE-CZ-NH1	12.10	126.35	120.30
1	A	395	ARG	NE-CZ-NH2	-10.84	114.88	120.30
1	A	516	ARG	NE-CZ-NH1	9.17	124.89	120.30
1	A	148	ARG	NE-CZ-NH1	8.67	124.64	120.30
1	A	528	ARG	NE-CZ-NH2	8.02	124.31	120.30
1	A	137	ARG	NE-CZ-NH1	-7.39	116.60	120.30
1	A	148	ARG	NE-CZ-NH2	-7.17	116.71	120.30
1	A	66	ARG	NE-CZ-NH1	7.12	123.86	120.30
1	A	516	ARG	NE-CZ-NH2	-6.85	116.88	120.30
1	A	395	ARG	NE-CZ-NH1	6.56	123.58	120.30
1	A	104	ARG	NE-CZ-NH1	6.26	123.43	120.30
1	A	180	ARG	NE-CZ-NH1	-6.24	117.18	120.30

Continued on next page...

Continued from previous page...

Mol	Chain	Res	Type	Atoms	Z	Observed(°)	Ideal(°)
1	A	517	ARG	NE-CZ-NH2	-5.99	117.30	120.30
1	A	137	ARG	NE-CZ-NH2	5.99	123.29	120.30
1	A	471	ARG	NE-CZ-NH2	-5.49	117.55	120.30
1	A	157	ARG	NE-CZ-NH2	-5.42	117.59	120.30
1	A	99	ARG	NE-CZ-NH2	-5.34	117.63	120.30
1	A	239	ASP	CB-CG-OD1	5.20	122.98	118.30
1	A	502	ARG	NE-CZ-NH2	-5.19	117.71	120.30
1	A	145	LEU	CA-CB-CG	5.12	127.08	115.30
1	A	528	ARG	NE-CZ-NH1	-5.12	117.74	120.30
1	A	125[A]	ARG	CD-NE-CZ	5.08	130.71	123.60
1	A	125[B]	ARG	CD-NE-CZ	5.08	130.71	123.60
1	A	502	ARG	NE-CZ-NH1	5.08	122.84	120.30
1	A	30	ASP	CB-CG-OD1	5.00	122.80	118.30

There are no chirality outliers.

There are no planarity outliers.

5.2 Too-close contacts [i](#)

In the following table, the Non-H and H(model) columns list the number of non-hydrogen atoms and hydrogen atoms in the chain respectively. The H(added) column lists the number of hydrogen atoms added and optimized by MolProbity. The Clashes column lists the number of clashes within the asymmetric unit, whereas Symm-Clashes lists symmetry related clashes.

Mol	Chain	Non-H	H(model)	H(added)	Clashes	Symm-Clashes
1	A	4185	0	4029	34	0
2	A	53	0	31	0	0
3	A	39	0	20	3	0
4	A	12	0	16	0	0
5	A	807	0	0	21	4
All	All	5096	0	4096	37	4

The all-atom clashscore is defined as the number of clashes found per 1000 atoms (including hydrogen atoms). The all-atom clashscore for this structure is 4.

All (37) close contacts within the same asymmetric unit are listed below, sorted by their clash magnitude.

Atom-1	Atom-2	Interatomic distance (Å)	Clash overlap (Å)
1:A:214:CYS:HB3	5:A:1296:HOH:O	1.03	1.19
1:A:505:VAL:HG11	5:A:709:HOH:O	1.48	1.10

Continued on next page...

Continued from previous page...

Atom-1	Atom-2	Interatomic distance (Å)	Clash overlap (Å)
1:A:518:GLN:HG2	5:A:845:HOH:O	1.62	0.98
3:A:602:NA7:HN6'	5:A:856:HOH:O	1.67	0.93
1:A:524:ASP:HB3	5:A:1316:HOH:O	1.71	0.91
1:A:57:LYS:HE2	5:A:1279:HOH:O	1.74	0.87
1:A:334:GLU:HG2	5:A:1243:HOH:O	1.77	0.83
1:A:28:ARG:HH21	1:A:29:ASN:HD21	1.32	0.77
1:A:361:GLN:HE21	1:A:361:GLN:H	1.29	0.77
1:A:57:LYS:NZ	5:A:702:HOH:O	2.21	0.74
1:A:296:ASN:HD21	1:A:326:TYR:H	1.36	0.73
1:A:371:HIS:HD2	5:A:1020:HOH:O	1.75	0.70
3:A:602:NA7:C2D	5:A:856:HOH:O	2.31	0.69
1:A:312:LYS:H	1:A:341:ASN:HD21	1.40	0.67
1:A:203:GLN:OE1	5:A:701:HOH:O	2.15	0.64
1:A:57:LYS:HD3	5:A:826:HOH:O	2.02	0.59
1:A:468:ASP:OD1	1:A:471:ARG:NH1	2.37	0.58
1:A:490:ASP:N	5:A:704:HOH:O	2.36	0.57
1:A:514:ASN:OD1	1:A:517:ARG:NH2	2.36	0.55
1:A:518:GLN:CG	5:A:845:HOH:O	2.37	0.54
1:A:471:ARG:HA	5:A:1029:HOH:O	2.08	0.52
1:A:217:SER:OG	1:A:334:GLU:HG3	2.11	0.51
1:A:361:GLN:N	1:A:361:GLN:HE21	2.05	0.50
1:A:505:VAL:CG1	5:A:709:HOH:O	2.27	0.50
1:A:57:LYS:HE3	1:A:334:GLU:OE2	2.11	0.50
1:A:57:LYS:NZ	1:A:334:GLU:OE2	2.45	0.50
1:A:214:CYS:SG	1:A:331:LEU:HD12	2.52	0.50
3:A:602:NA7:H1'1	5:A:946:HOH:O	2.10	0.49
1:A:104:ARG:NH1	5:A:708:HOH:O	2.45	0.48
1:A:145:LEU:HD22	1:A:385:VAL:HG22	1.94	0.48
1:A:312:LYS:H	1:A:341:ASN:ND2	2.09	0.47
1:A:57:LYS:CE	1:A:334:GLU:OE2	2.63	0.47
1:A:188:SER:OG	1:A:331:LEU:HD22	2.15	0.46
1:A:134:LEU:N	1:A:134:LEU:HD23	2.30	0.46
1:A:245:THR:HA	5:A:829:HOH:O	2.16	0.45
1:A:497:ASN:HB2	5:A:1096:HOH:O	2.18	0.42
1:A:432:GLY:HA3	5:A:1159:HOH:O	2.22	0.40

All (4) symmetry-related close contacts are listed below. The label for Atom-2 includes the symmetry operator and encoded unit-cell translations to be applied.

Atom-1	Atom-2	Interatomic distance (Å)	Clash overlap (Å)
5:A:1141:HOH:O	5:A:1287:HOH:O[8_545]	1.88	0.32

Continued on next page...

Continued from previous page...

Atom-1	Atom-2	Interatomic distance (Å)	Clash overlap (Å)
5:A:1348:HOH:O	5:A:1351:HOH:O[8_445]	2.04	0.16
5:A:1045:HOH:O	5:A:1408:HOH:O[8_445]	2.12	0.08
5:A:1290:HOH:O	5:A:1468:HOH:O[3_554]	2.14	0.06

5.3 Torsion angles [i](#)

5.3.1 Protein backbone [i](#)

In the following table, the Percentiles column shows the percent Ramachandran outliers of the chain as a percentile score with respect to all X-ray entries followed by that with respect to entries of similar resolution.

The Analysed column shows the number of residues for which the backbone conformation was analysed, and the total number of residues.

Mol	Chain	Analysed	Favoured	Allowed	Outliers	Percentiles
1	A	531/541 (98%)	520 (98%)	9 (2%)	2 (0%)	34 15

All (2) Ramachandran outliers are listed below:

Mol	Chain	Res	Type
1	A	277	ASN
1	A	490	ASP

5.3.2 Protein sidechains [i](#)

In the following table, the Percentiles column shows the percent sidechain outliers of the chain as a percentile score with respect to all X-ray entries followed by that with respect to entries of similar resolution.

The Analysed column shows the number of residues for which the sidechain conformation was analysed, and the total number of residues.

Mol	Chain	Analysed	Rotameric	Outliers	Percentiles
1	A	439/444 (99%)	435 (99%)	4 (1%)	78 65

All (4) residues with a non-rotameric sidechain are listed below:

Mol	Chain	Res	Type
1	A	234	PHE

Continued on next page...

Continued from previous page...

Mol	Chain	Res	Type
1	A	361	GLN
1	A	463	VAL
1	A	490	ASP

Some sidechains can be flipped to improve hydrogen bonding and reduce clashes. All (7) such sidechains are listed below:

Mol	Chain	Res	Type
1	A	29	ASN
1	A	296	ASN
1	A	341	ASN
1	A	361	GLN
1	A	371	HIS
1	A	405	HIS
1	A	482	ASN

5.3.3 RNA [i](#)

There are no RNA molecules in this entry.

5.4 Non-standard residues in protein, DNA, RNA chains [i](#)

There are no non-standard protein/DNA/RNA residues in this entry.

5.5 Carbohydrates [i](#)

There are no monosaccharides in this entry.

5.6 Ligand geometry [i](#)

4 ligands are modelled in this entry.

In the following table, the Counts columns list the number of bonds (or angles) for which Mogul statistics could be retrieved, the number of bonds (or angles) that are observed in the model and the number of bonds (or angles) that are defined in the Chemical Component Dictionary. The Link column lists molecule types, if any, to which the group is linked. The Z score for a bond length (or angle) is the number of standard deviations the observed value is removed from the expected value. A bond length (or angle) with $|Z| > 2$ is considered an outlier worth inspection. RMSZ is the root-mean-square of all Z scores of the bond lengths (or angles).

Mol	Type	Chain	Res	Link	Bond lengths			Bond angles		
					Counts	RMSZ	# Z > 2	Counts	RMSZ	# Z > 2
2	FAD	A	601	-	51,58,58	1.28	4 (7%)	60,89,89	2.47	12 (20%)
4	GOL	A	603	-	5,5,5	0.79	0	5,5,5	0.47	0
3	NA7	A	602	-	36,42,42	1.53	5 (13%)	43,65,65	2.22	10 (23%)
4	GOL	A	604	-	5,5,5	0.60	0	5,5,5	0.47	0

In the following table, the Chirals column lists the number of chiral outliers, the number of chiral centers analysed, the number of these observed in the model and the number defined in the Chemical Component Dictionary. Similar counts are reported in the Torsion and Rings columns. '-' means no outliers of that kind were identified.

Mol	Type	Chain	Res	Link	Chirals	Torsions	Rings
2	FAD	A	601	-	-	8/30/50/50	0/6/6/6
4	GOL	A	603	-	-	0/4/4/4	-
3	NA7	A	602	-	-	2/23/56/56	0/4/4/4
4	GOL	A	604	-	-	0/4/4/4	-

All (9) bond length outliers are listed below:

Mol	Chain	Res	Type	Atoms	Z	Observed(Å)	Ideal(Å)
2	A	601	FAD	C4X-C10	5.04	1.43	1.38
3	A	602	NA7	C1D-C2D	4.97	1.60	1.51
3	A	602	NA7	P2B-O2B	4.00	1.66	1.59
3	A	602	NA7	O4D-C1D	3.46	1.51	1.43
2	A	601	FAD	C2A-N3A	3.00	1.36	1.32
3	A	602	NA7	O4B-C1B	2.53	1.44	1.41
3	A	602	NA7	C5A-C4A	2.53	1.47	1.40
2	A	601	FAD	C9A-C5X	2.40	1.47	1.42
2	A	601	FAD	C2-N3	-2.12	1.34	1.38

All (22) bond angle outliers are listed below:

Mol	Chain	Res	Type	Atoms	Z	Observed(°)	Ideal(°)
2	A	601	FAD	C4-N3-C2	11.83	125.13	115.14
2	A	601	FAD	C4-C4X-C10	-9.67	113.55	119.95
3	A	602	NA7	C1D-C2D-C3D	-8.13	89.25	101.63
3	A	602	NA7	O4D-C1D-C2D	6.01	117.64	105.99
2	A	601	FAD	C4-C4X-N5	4.88	124.18	118.60
3	A	602	NA7	O2D-C2D-C1D	4.29	123.76	110.97
3	A	602	NA7	C1D-O4D-C4D	-3.99	98.86	108.16
3	A	602	NA7	O2X-P2B-O1X	3.60	121.41	107.64
2	A	601	FAD	C4X-C4-N3	-3.50	118.64	123.43

Continued on next page...

Continued from previous page...

Mol	Chain	Res	Type	Atoms	Z	Observed(°)	Ideal(°)
3	A	602	NA7	O3D-C3D-C2D	3.15	119.64	112.04
2	A	601	FAD	C1'-N10-C9A	3.13	120.76	118.29
2	A	601	FAD	C5X-C9A-N10	2.72	119.69	117.72
2	A	601	FAD	C4X-N5-C5X	2.67	119.44	116.77
2	A	601	FAD	C4'-C3'-C2'	2.58	118.72	113.36
3	A	602	NA7	C3B-C2B-C1B	-2.57	98.05	102.89
3	A	602	NA7	C4A-C5A-N7A	-2.45	106.84	109.40
2	A	601	FAD	N6A-C6A-N1A	2.39	123.53	118.57
2	A	601	FAD	C5A-C6A-N1A	-2.17	115.43	120.35
3	A	602	NA7	O2X-P2B-O2B	-2.12	96.49	105.99
3	A	602	NA7	O2X-P2B-O3X	2.11	118.93	110.68
2	A	601	FAD	C2A-N1A-C6A	2.04	122.24	118.75
2	A	601	FAD	O2P-P-O1P	2.03	122.28	112.24

There are no chirality outliers.

All (10) torsion outliers are listed below:

Mol	Chain	Res	Type	Atoms
2	A	601	FAD	N10-C1'-C2'-O2'
2	A	601	FAD	N10-C1'-C2'-C3'
2	A	601	FAD	O3'-C3'-C4'-C5'
2	A	601	FAD	O3'-C3'-C4'-O4'
2	A	601	FAD	C2'-C3'-C4'-C5'
2	A	601	FAD	PA-O3P-P-O5'
3	A	602	NA7	C2B-O2B-P2B-O1X
3	A	602	NA7	O4B-C4B-C5B-O5B
2	A	601	FAD	C2'-C3'-C4'-O4'
2	A	601	FAD	O4B-C4B-C5B-O5B

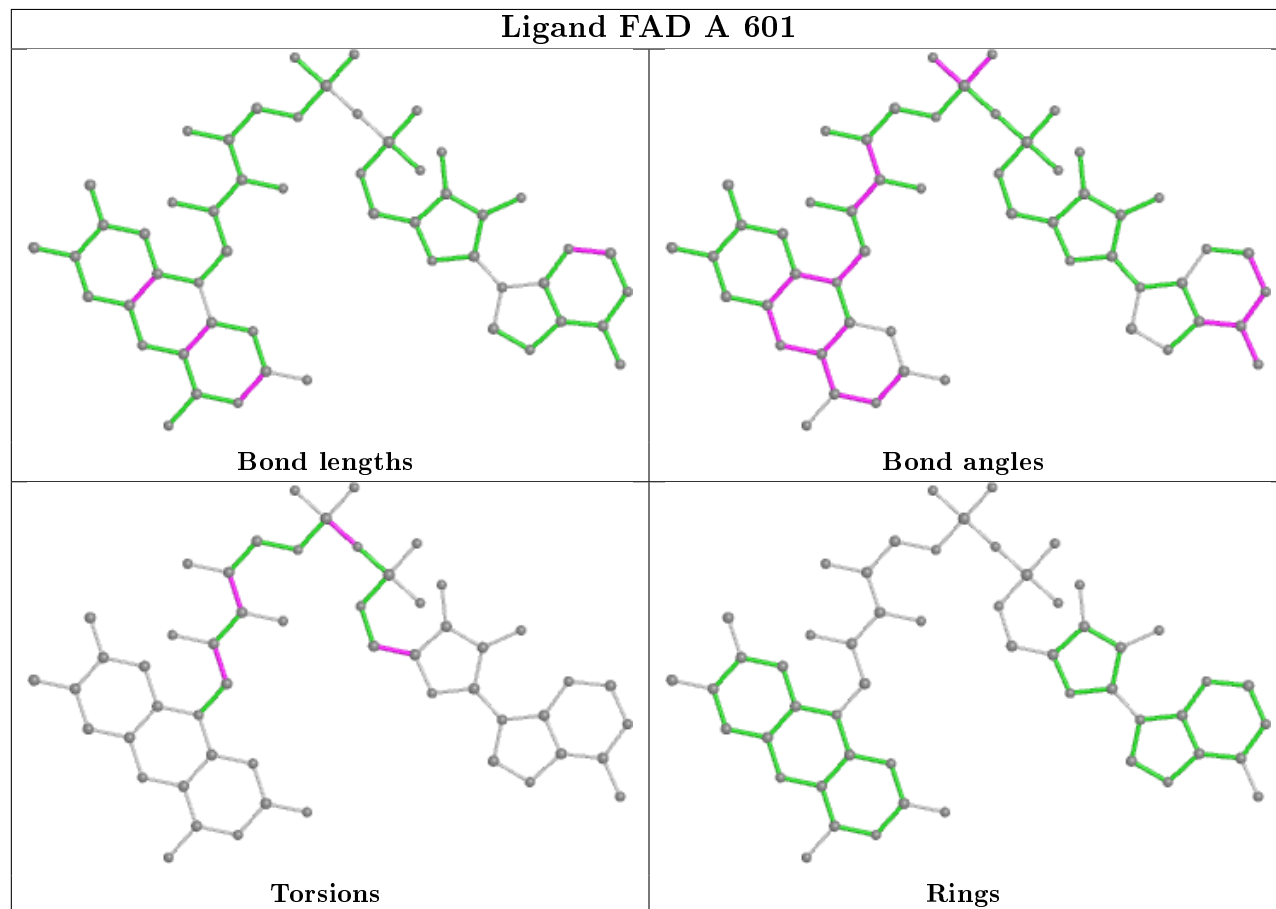
There are no ring outliers.

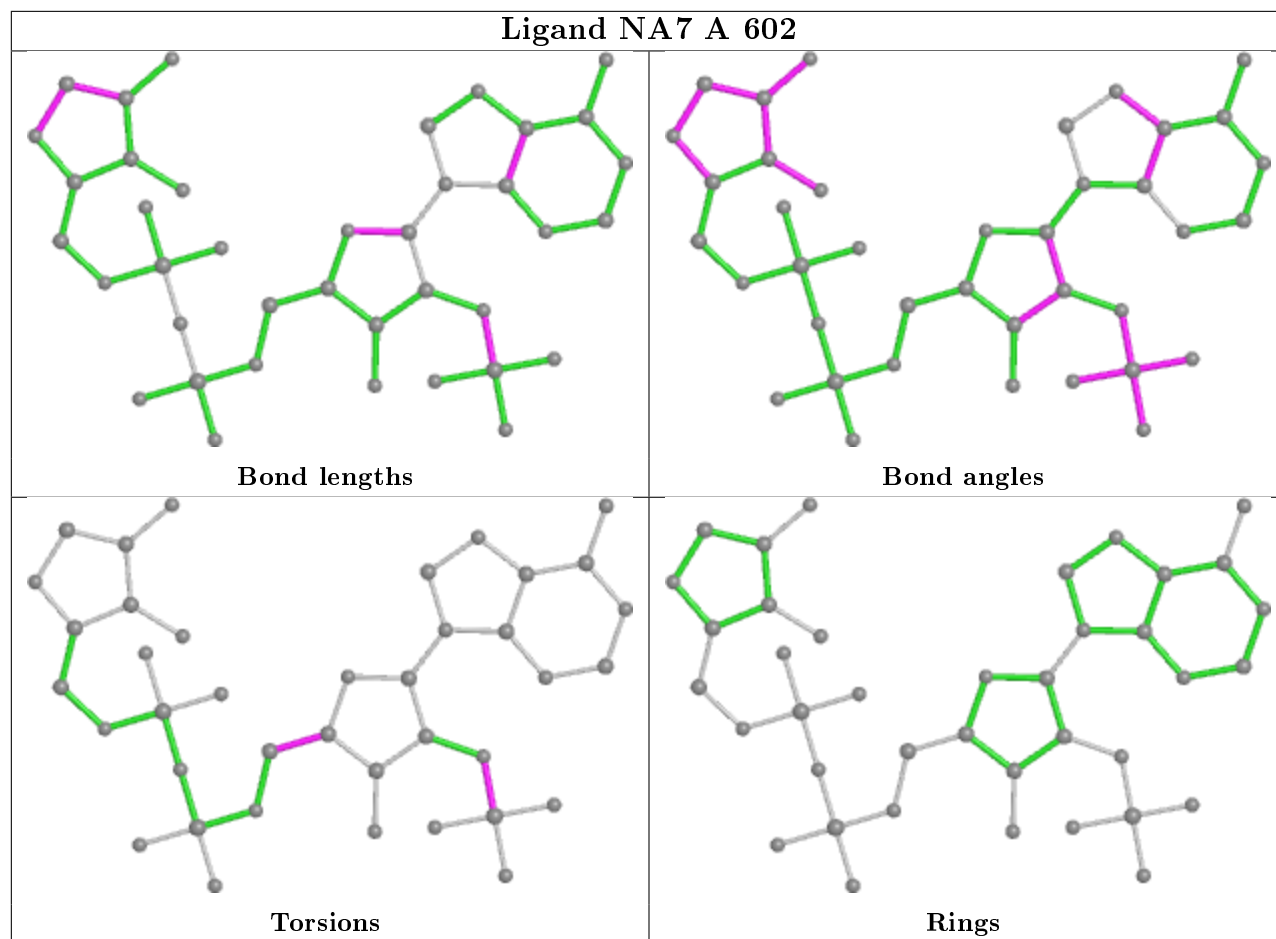
1 monomer is involved in 3 short contacts:

Mol	Chain	Res	Type	Clashes	Symm-Clashes
3	A	602	NA7	3	0

The following is a two-dimensional graphical depiction of Mogul quality analysis of bond lengths, bond angles, torsion angles, and ring geometry for all instances of the Ligand of Interest. In addition, ligands with molecular weight > 250 and outliers as shown on the validation Tables will also be included. For torsion angles, if less than 5% of the Mogul distribution of torsion angles is within 10 degrees of the torsion angle in question, then that torsion angle is considered an outlier. Any bond that is central to one or more torsion angles identified as an outlier by Mogul will be highlighted in the graph. For rings, the root-mean-square deviation (RMSD) between the ring

in question and similar rings identified by Mogul is calculated over all ring torsion angles. If the average RMSD is greater than 60 degrees and the minimal RMSD between the ring in question and any Mogul-identified rings is also greater than 60 degrees, then that ring is considered an outlier. The outliers are highlighted in purple. The color gray indicates Mogul did not find sufficient equivalents in the CSD to analyse the geometry.





5.7 Other polymers [\(i\)](#)

There are no such residues in this entry.

5.8 Polymer linkage issues [\(i\)](#)

There are no chain breaks in this entry.

6 Fit of model and data [i](#)

6.1 Protein, DNA and RNA chains [i](#)

In the following table, the column labelled ‘#RSRZ> 2’ contains the number (and percentage) of RSRZ outliers, followed by percent RSRZ outliers for the chain as percentile scores relative to all X-ray entries and entries of similar resolution. The OWAB column contains the minimum, median, 95th percentile and maximum values of the occupancy-weighted average B-factor per residue. The column labelled ‘Q< 0.9’ lists the number of (and percentage) of residues with an average occupancy less than 0.9.

Mol	Chain	Analysed	<RSRZ>	#RSRZ>2	OWAB(Å ²)	Q<0.9
1	A	529/541 (97%)	-0.61	0 100 100	5, 10, 22, 36	0

There are no RSRZ outliers to report.

6.2 Non-standard residues in protein, DNA, RNA chains [i](#)

There are no non-standard protein/DNA/RNA residues in this entry.

6.3 Carbohydrates [i](#)

There are no monosaccharides in this entry.

6.4 Ligands [i](#)

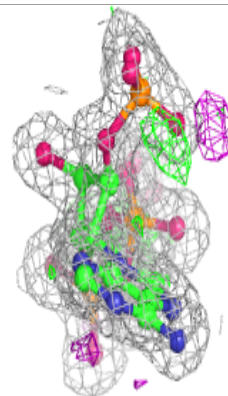
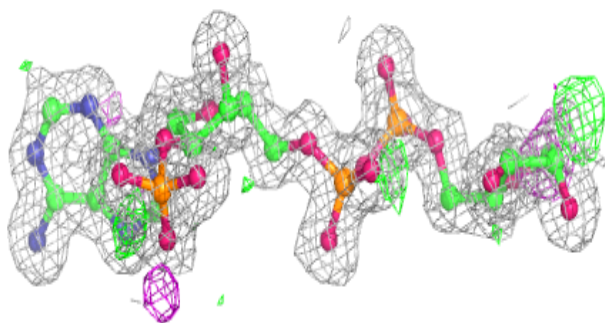
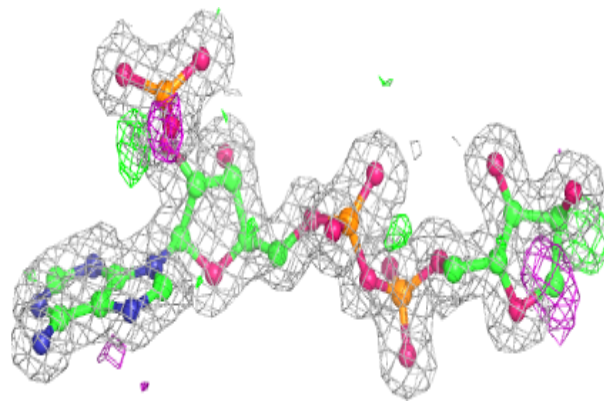
In the following table, the Atoms column lists the number of modelled atoms in the group and the number defined in the chemical component dictionary. The B-factors column lists the minimum, median, 95th percentile and maximum values of B factors of atoms in the group. The column labelled ‘Q< 0.9’ lists the number of atoms with occupancy less than 0.9.

Mol	Type	Chain	Res	Atoms	RSCC	RSR	B-factors(Å ²)	Q<0.9
4	GOL	A	603	6/6	0.98	0.06	10,12,12,14	0
3	NA7	A	602	39/39	0.98	0.06	6,8,14,17	0
4	GOL	A	604	6/6	0.98	0.06	10,10,13,17	0
2	FAD	A	601	53/53	0.99	0.07	4,5,8,10	0

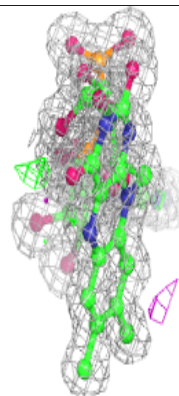
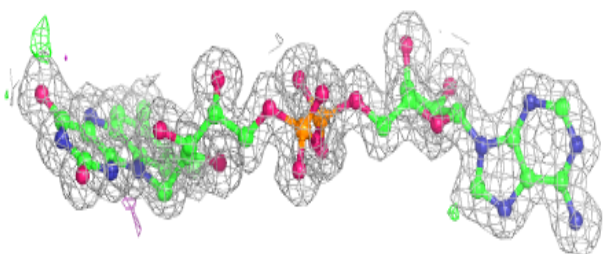
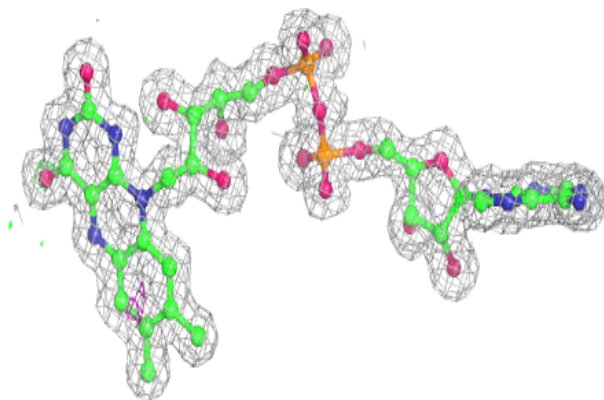
The following is a graphical depiction of the model fit to experimental electron density of all instances of the Ligand of Interest. In addition, ligands with molecular weight > 250 and outliers as shown on the geometry validation Tables will also be included. Each fit is shown from different orientation to approximate a three-dimensional view.

Electron density around NA7 A 602:

$2mF_o-DF_c$ (at 0.7 rmsd) in gray
 mF_o-DF_c (at 3 rmsd) in purple (negative)
and green (positive)

**Electron density around FAD A 601:**

$2mF_o-DF_c$ (at 0.7 rmsd) in gray
 mF_o-DF_c (at 3 rmsd) in purple (negative)
and green (positive)



6.5 Other polymers [i](#)

There are no such residues in this entry.