



Full wwPDB X-ray Structure Validation Report ⓘ

Aug 22, 2020 – 10:49 AM BST

PDB ID : 5LSP
Title : 107_A07 Fab in complex with fragment of the Met receptor
Authors : DiCara, D.; Chirgadze, D.Y.; Pope, A.; Karatt-Vellatt, A.; Winter, A.; van den Heuvel, J.; Gherardi, E.; McCafferty, J.
Deposited on : 2016-09-05
Resolution : 2.60 Å(reported)

This is a Full wwPDB X-ray Structure Validation Report for a publicly released PDB entry.

We welcome your comments at validation@mail.wwpdb.org

A user guide is available at

<https://www.wwpdb.org/validation/2017/XrayValidationReportHelp>

with specific help available everywhere you see the ⓘ symbol.

The following versions of software and data (see [references ⓘ](#)) were used in the production of this report:

MolProbity : 4.02b-467
Mogul : 1.8.5 (274361), CSD as541be (2020)
Xtriage (Phenix) : 1.13
EDS : 2.13.1
Percentile statistics : 20191225.v01 (using entries in the PDB archive December 25th 2019)
Refmac : 5.8.0158
CCP4 : 7.0.044 (Gargrove)
Ideal geometry (proteins) : Engh & Huber (2001)
Ideal geometry (DNA, RNA) : Parkinson et al. (1996)
Validation Pipeline (wwPDB-VP) : 2.13.1

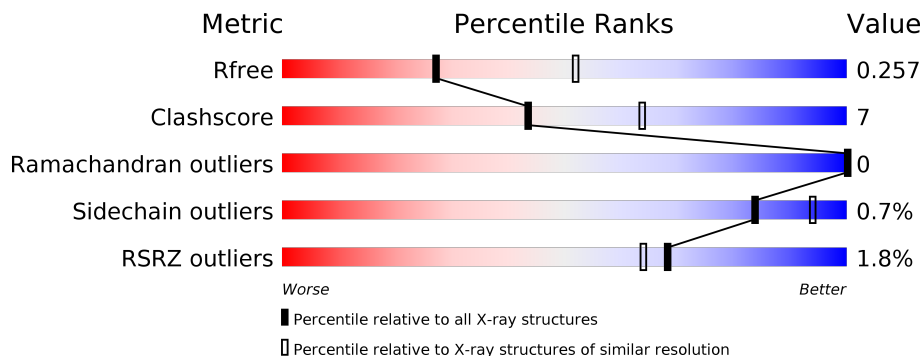
1 Overall quality at a glance

The following experimental techniques were used to determine the structure:

X-RAY DIFFRACTION

The reported resolution of this entry is 2.60 Å.

Percentile scores (ranging between 0-100) for global validation metrics of the entry are shown in the following graphic. The table shows the number of entries on which the scores are based.



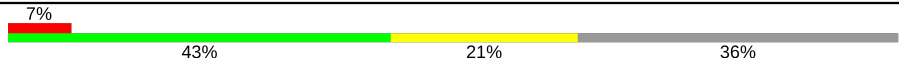

Metric	Whole archive (#Entries)	Similar resolution (#Entries, resolution range(Å))
R_{free}	130704	3163 (2.60-2.60)
Clashscore	141614	3518 (2.60-2.60)
Ramachandran outliers	138981	3455 (2.60-2.60)
Sidechain outliers	138945	3455 (2.60-2.60)
RSRZ outliers	127900	3104 (2.60-2.60)

The table below summarises the geometric issues observed across the polymeric chains and their fit to the electron density. The red, orange, yellow and green segments on the lower bar indicate the fraction of residues that contain outliers for ≥ 3 , 2, 1 and 0 types of geometric quality criteria respectively. A grey segment represents the fraction of residues that are not modelled. The numeric value for each fraction is indicated below the corresponding segment, with a dot representing fractions $\leq 5\%$. The upper red bar (where present) indicates the fraction of residues that have poor fit to the electron density. The numeric value is given above the bar.

Mol	Chain	Length	Quality of chain
1	A	231	 77% 19% .
1	P	231	 6% 78% 18% .
2	H	223	 88% 8% ..
2	S	223	 6% 81% 16% .
3	L	216	 84% 13% .
3	T	216	 83% 15% .

Continued on next page...

Continued from previous page...

Mol	Chain	Length	Quality of chain
4	X	14	
4	Y	14	

2 Entry composition i

There are 6 unique types of molecules in this entry. The entry contains 10159 atoms, of which 0 are hydrogens and 0 are deuteriums.

In the tables below, the ZeroOcc column contains the number of atoms modelled with zero occupancy, the AltConf column contains the number of residues with at least one atom in alternate conformation and the Trace column contains the number of residues modelled with at most 2 atoms.

- Molecule 1 is a protein called Hepatocyte growth factor receptor.

Mol	Chain	Residues	Atoms					ZeroOcc	AltConf	Trace
			Total	C	N	O	S			
1	A	222	1705	1070	294	324	17	0	0	0
1	P	222	1705	1070	294	324	17	0	0	0

There are 12 discrepancies between the modelled and reference sequences:

Chain	Residue	Modelled	Actual	Comment	Reference
A	744	HIS	-	expression tag	UNP P08581
A	745	HIS	-	expression tag	UNP P08581
A	746	HIS	-	expression tag	UNP P08581
A	747	HIS	-	expression tag	UNP P08581
A	748	HIS	-	expression tag	UNP P08581
A	749	HIS	-	expression tag	UNP P08581
P	744	HIS	-	expression tag	UNP P08581
P	745	HIS	-	expression tag	UNP P08581
P	746	HIS	-	expression tag	UNP P08581
P	747	HIS	-	expression tag	UNP P08581
P	748	HIS	-	expression tag	UNP P08581
P	749	HIS	-	expression tag	UNP P08581

- Molecule 2 is a protein called 107_A07 Fab heavy chain.

Mol	Chain	Residues	Atoms					ZeroOcc	AltConf	Trace
			Total	C	N	O	S			
2	H	216	1628	1036	260	322	10	0	0	0
2	S	216	1628	1036	260	322	10	0	0	0

- Molecule 3 is a protein called 107_A07 Fab light chain.

Mol	Chain	Residues	Atoms					ZeroOcc	AltConf	Trace
			Total	C	N	O	S			
3	L	212	Total 1625	C 1014	N 274	O 332	S 5	0	0	0
3	T	212	Total 1625	C 1014	N 274	O 332	S 5	0	0	0

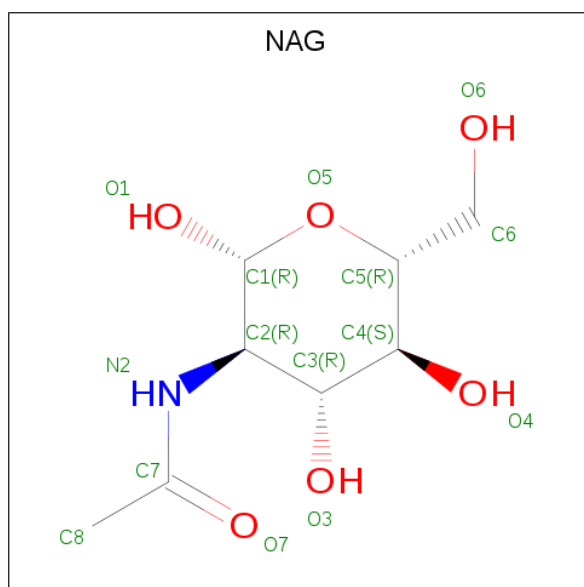
- Molecule 4 is a protein called Hepatocyte growth factor receptor.

Mol	Chain	Residues	Atoms					ZeroOcc	AltConf	Trace
			Total	C	N	O	S			
4	X	9	Total 59	C 35	N 9	O 14	S 1	0	0	0
4	Y	10	Total 68	C 41	N 11	O 15	S 1	0	0	0

There are 6 discrepancies between the modelled and reference sequences:

Chain	Residue	Modelled	Actual	Comment	Reference
X	22	GLU	-	expression tag	UNP P08581
X	23	THR	-	expression tag	UNP P08581
X	24	ARG	-	expression tag	UNP P08581
Y	22	GLU	-	expression tag	UNP P08581
Y	23	THR	-	expression tag	UNP P08581
Y	24	ARG	-	expression tag	UNP P08581

- Molecule 5 is 2-acetamido-2-deoxy-beta-D-glucopyranose (three-letter code: NAG) (formula: $C_8H_{15}NO_6$).




Mol	Chain	Residues	Atoms				ZeroOcc	AltConf
5	A	1	Total	C	N	O	0	0
			14	8	1	5		
5	P	1	Total	C	N	O	0	0
			14	8	1	5		

- Molecule 6 is water.


Mol	Chain	Residues	Atoms		ZeroOcc	AltConf
6	A	18	Total	O	0	0
			18	18		
6	H	21	Total	O	0	0
			21	21		
6	L	22	Total	O	0	0
			22	22		
6	P	4	Total	O	0	0
			4	4		
6	S	13	Total	O	0	0
			13	13		
6	T	10	Total	O	0	0
			10	10		

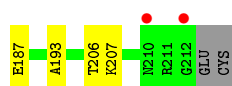
- Molecule 3: 107_A07 Fab light chain

Chain L:  84% 13%



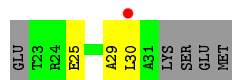
- Molecule 3: 107_A07 Fab light chain

Chain T:  83% 15%



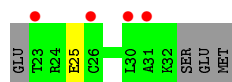
- Molecule 4: Hepatocyte growth factor receptor

Chain X:  7% 43% 21% 36%



- Molecule 4: Hepatocyte growth factor receptor

Chain Y:  29% 64% 7% 29%



4 Data and refinement statistics

Property	Value	Source
Space group	P 2 21 21	Depositor
Cell constants a, b, c, α , β , γ	71.88Å 82.28Å 267.30Å 90.00° 90.00° 90.00°	Depositor
Resolution (Å)	48.94 – 2.60 48.94 – 2.61	Depositor EDS
% Data completeness (in resolution range)	98.8 (48.94-2.60) 98.8 (48.94-2.61)	Depositor EDS
R_{merge}	0.11	Depositor
R_{sym}	0.11	Depositor
$\langle I/\sigma(I) \rangle$ ¹	2.32 (at 2.61Å)	Xtrriage
Refinement program	PHENIX 1.9_1692	Depositor
R, R_{free}	0.215 , 0.257 0.219 , 0.257	Depositor DCC
R_{free} test set	2000 reflections (4.09%)	wwPDB-VP
Wilson B-factor (Å ²)	50.0	Xtrriage
Anisotropy	0.533	Xtrriage
Bulk solvent k_{sol} (e/Å ³), B_{sol} (Å ²)	0.32 , 40.2	EDS
L-test for twinning ²	$\langle L \rangle = 0.46$, $\langle L^2 \rangle = 0.29$	Xtrriage
Estimated twinning fraction	No twinning to report.	Xtrriage
F_o, F_c correlation	0.93	EDS
Total number of atoms	10159	wwPDB-VP
Average B, all atoms (Å ²)	59.0	wwPDB-VP

Xtrriage's analysis on translational NCS is as follows: *The largest off-origin peak in the Patterson function is 4.23% of the height of the origin peak. No significant pseudotranslation is detected.*

¹ Intensities estimated from amplitudes.

² Theoretical values of $\langle |L| \rangle$, $\langle L^2 \rangle$ for acentric reflections are 0.5, 0.333 respectively for untwinned datasets, and 0.375, 0.2 for perfectly twinned datasets.

5 Model quality [i](#)

5.1 Standard geometry [i](#)

Bond lengths and bond angles in the following residue types are not validated in this section: NAG

The Z score for a bond length (or angle) is the number of standard deviations the observed value is removed from the expected value. A bond length (or angle) with $|Z| > 5$ is considered an outlier worth inspection. RMSZ is the root-mean-square of all Z scores of the bond lengths (or angles).

Mol	Chain	Bond lengths		Bond angles	
		RMSZ	# Z >5	RMSZ	# Z >5
1	A	0.28	0/1742	0.53	0/2360
1	P	0.26	0/1742	0.50	0/2360
2	H	0.28	0/1671	0.51	0/2283
2	S	0.31	0/1671	0.59	0/2283
3	L	0.25	0/1659	0.48	0/2252
3	T	0.26	0/1659	0.47	0/2252
4	X	0.57	0/58	0.79	0/78
4	Y	0.26	0/67	0.59	0/89
All	All	0.28	0/10269	0.52	0/13957

There are no bond length outliers.

There are no bond angle outliers.

There are no chirality outliers.

There are no planarity outliers.

5.2 Too-close contacts [i](#)

In the following table, the Non-H and H(model) columns list the number of non-hydrogen atoms and hydrogen atoms in the chain respectively. The H(added) column lists the number of hydrogen atoms added and optimized by MolProbity. The Clashes column lists the number of clashes within the asymmetric unit, whereas Symm-Clashes lists symmetry related clashes.

Mol	Chain	Non-H	H(model)	H(added)	Clashes	Symm-Clashes
1	A	1705	0	1676	31	0
1	P	1705	0	1676	24	0
2	H	1628	0	1579	17	0
2	S	1628	0	1579	29	0
3	L	1625	0	1570	19	0

Continued on next page...

Continued from previous page...

Mol	Chain	Non-H	H(model)	H(added)	Clashes	Symm-Clashes
3	T	1625	0	1570	19	0
4	X	59	0	47	5	0
4	Y	68	0	60	1	0
5	A	14	0	13	0	0
5	P	14	0	13	0	0
6	A	18	0	0	0	0
6	H	21	0	0	0	0
6	L	22	0	0	1	0
6	P	4	0	0	0	0
6	S	13	0	0	1	0
6	T	10	0	0	0	0
All	All	10159	0	9783	132	0

The all-atom clashscore is defined as the number of clashes found per 1000 atoms (including hydrogen atoms). The all-atom clashscore for this structure is 7.

All (132) close contacts within the same asymmetric unit are listed below, sorted by their clash magnitude.

Atom-1	Atom-2	Interatomic distance (Å)	Clash overlap (Å)
1:A:684:SER:O	1:A:688:ARG:NH1	2.15	0.80
1:A:569:PHE:HD2	4:X:30:LEU:HD13	1.60	0.67
1:A:595:LYS:NZ	2:H:101:THR:O	2.27	0.67
3:L:187:GLU:O	3:L:211:ARG:NH2	2.28	0.66
2:H:3:GLN:NE2	2:S:3:GLN:HE22	1.93	0.66
3:T:206:THR:O	3:T:207:LYS:HD3	1.96	0.64
2:S:196:LEU:HD11	2:S:199:GLN:O	1.98	0.64
1:A:580:ARG:HG2	1:A:625:THR:HG22	1.80	0.64
2:S:212:THR:O	2:S:213:LYS:HD3	1.98	0.63
1:A:530:LEU:HD22	1:A:558:GLN:HA	1.81	0.63
1:P:620:ASN:HB2	4:Y:25:GLU:OE1	1.98	0.62
2:S:207:HIS:CD2	2:S:209:PRO:HD2	2.35	0.61
1:P:580:ARG:NH2	1:P:616:GLU:OE2	2.33	0.61
1:A:733:THR:OG1	1:A:734:SER:N	2.33	0.60
3:L:183:LYS:O	3:L:187:GLU:HG3	2.00	0.60
3:L:145:LYS:HG2	3:L:197:THR:HB	1.82	0.60
1:A:561:CYS:O	1:A:642:ASN:ND2	2.33	0.57
3:T:183:LYS:O	3:T:187:GLU:HG3	2.05	0.57
1:P:636:MET:HE1	1:P:654:TYR:HD2	1.68	0.57
1:P:547:ARG:NH1	1:P:549:GLU:OE2	2.37	0.56
2:H:91:THR:HG23	2:H:117:THR:HA	1.87	0.56
1:A:544:LYS:HG2	1:A:546:VAL:HG23	1.87	0.56

Continued on next page...

Continued from previous page...

Atom-1	Atom-2	Interatomic distance (Å)	Clash overlap (Å)
2:S:11:VAL:HB	2:S:154:PRO:HG3	1.88	0.56
2:H:220:PRO:O	2:H:221:LYS:HB2	2.06	0.56
1:P:683:ASN:HA	1:P:688:ARG:HE	1.71	0.56
2:S:216:LYS:HE2	3:T:123:GLU:OE1	2.06	0.55
2:S:162:ASN:HD22	2:S:166:LEU:HD13	1.71	0.55
1:A:521:ARG:NH1	1:A:521:ARG:HG2	2.20	0.55
3:L:151:ASP:OD1	3:L:190:LYS:HB3	2.06	0.54
2:S:36:TRP:CE2	2:S:81:MET:HB2	2.42	0.54
2:S:196:LEU:HD13	2:S:201:TYR:HE2	1.72	0.54
2:S:131:LEU:HD22	3:T:118:PHE:HB3	1.91	0.53
2:H:166:LEU:HD21	2:H:189:VAL:HG21	1.89	0.53
2:S:196:LEU:HA	2:S:198:THR:H	1.72	0.53
3:L:37:GLN:HB2	3:L:47:LEU:HD11	1.90	0.53
2:S:170:VAL:C	2:S:171:HIS:HD1	2.12	0.53
3:L:3:GLN:NE2	3:L:5:ILE:HD11	2.24	0.52
2:H:36:TRP:CE2	2:H:81:MET:HB2	2.44	0.52
1:P:583:ILE:HD13	1:P:640:ILE:HD11	1.90	0.52
3:T:22:THR:HG22	3:T:72:THR:HG22	1.92	0.52
1:A:660:THR:N	1:A:678:THR:O	2.42	0.52
1:A:569:PHE:HD2	4:X:30:LEU:CD1	2.23	0.52
1:P:544:LYS:HB3	1:P:546:VAL:HG23	1.91	0.52
1:P:551:CYS:SG	1:P:556:TRP:HB2	2.50	0.52
1:A:546:VAL:HG11	1:A:550:GLU:HB2	1.91	0.52
1:P:662:ILE:HG22	1:P:677:LEU:HD22	1.91	0.52
3:L:189:HIS:O	3:L:211:ARG:HD3	2.09	0.51
2:S:176:VAL:HG11	3:T:160:GLN:HB3	1.93	0.51
2:S:212:THR:C	2:S:213:LYS:HD3	2.31	0.51
3:T:37:GLN:HB2	3:T:47:LEU:HD11	1.92	0.51
2:S:202:ILE:HG13	2:S:217:LYS:HD3	1.91	0.50
2:S:151:ASP:HB3	2:S:182:LEU:HD13	1.93	0.50
1:A:688:ARG:HB2	1:A:699:LEU:HD11	1.94	0.50
1:P:733:THR:OG1	1:P:734:SER:N	2.40	0.50
1:P:569:PHE:CD1	1:P:570:PRO:HA	2.47	0.49
3:L:18:ARG:HG2	3:L:76:SER:HA	1.93	0.49
3:T:120:PRO:HD3	3:T:132:VAL:HG22	1.93	0.49
1:P:576:GLU:N	1:P:576:GLU:OE1	2.43	0.48
1:P:580:ARG:HG2	1:P:625:THR:HG22	1.95	0.48
2:H:109:TRP:HB3	2:S:1:GLN:NE2	2.28	0.48
3:T:158:ASN:HD22	3:T:181:LEU:HD21	1.78	0.48
1:P:561:CYS:O	1:P:642:ASN:ND2	2.41	0.48
2:S:170:VAL:O	2:S:171:HIS:ND1	2.40	0.47

Continued on next page...

Continued from previous page...

Atom-1	Atom-2	Interatomic distance (Å)	Clash overlap (Å)
2:H:64:PHE:O	2:H:68:VAL:HG12	2.14	0.47
3:L:124:GLN:O	3:L:127:SER:OG	2.22	0.47
1:A:588:PHE:CD2	1:A:622:LEU:HD13	2.50	0.47
2:H:3:GLN:HA	2:H:3:GLN:HE21	1.79	0.47
1:P:530:LEU:HD22	1:P:558:GLN:HA	1.96	0.47
2:S:215:ASP:OD2	6:S:301:HOH:O	2.20	0.47
3:L:108:ARG:HG3	3:L:109:ALA:O	2.14	0.47
1:A:521:ARG:HG2	1:A:521:ARG:HH11	1.80	0.47
3:T:108:ARG:HE	3:T:172:THR:HG22	1.80	0.46
3:L:105:GLU:OE2	6:L:301:HOH:O	2.20	0.46
2:H:3:GLN:HE22	2:S:3:GLN:NE2	2.12	0.46
2:S:162:ASN:HD22	2:S:166:LEU:CD1	2.28	0.46
3:T:146:VAL:HG11	3:T:177:SER:HB2	1.97	0.46
3:T:39:LYS:HD3	3:T:84:ALA:HB2	1.96	0.46
1:A:569:PHE:CD2	4:X:30:LEU:HD13	2.46	0.46
3:L:147:GLN:NE2	3:L:154:LEU:HD11	2.31	0.46
3:L:79:ARG:HD3	3:L:79:ARG:HA	1.72	0.46
3:T:149:LYS:HB2	3:T:193:ALA:HB3	1.97	0.45
1:A:662:ILE:HG22	1:A:677:LEU:HD22	1.97	0.45
1:A:605:LEU:HB2	1:A:610:CYS:SG	2.57	0.45
2:H:89:GLU:H	2:H:89:GLU:HG3	1.35	0.45
3:T:114:SER:HB2	3:T:137:ASN:HB3	1.98	0.45
3:L:3:GLN:HE21	3:L:5:ILE:HD11	1.80	0.45
1:P:687:SER:HA	1:P:688:ARG:NH1	2.32	0.45
3:T:148:TRP:HB2	3:T:155:GLN:HB2	1.99	0.45
1:P:612:LEU:HD23	1:P:624:CYS:HB3	1.99	0.45
1:A:578:GLY:HA3	1:A:728:LEU:HG	1.99	0.45
3:L:61:ARG:HD2	3:L:77:ASN:HB3	2.00	0.44
1:P:605:LEU:HD13	1:P:638:ILE:HG12	2.00	0.44
1:P:546:VAL:CG1	1:P:550:GLU:HG3	2.48	0.44
2:H:3:GLN:NE2	2:S:3:GLN:NE2	2.64	0.43
1:P:533:PRO:HA	1:P:534:PRO:HD3	1.89	0.43
2:S:11:VAL:O	2:S:11:VAL:HG13	2.19	0.43
2:H:2:MET:C	2:H:3:GLN:HG2	2.37	0.43
1:A:658:VAL:O	1:A:679:GLY:HA3	2.18	0.43
1:A:546:VAL:CG1	1:A:550:GLU:HB2	2.49	0.43
1:A:583:ILE:HG21	1:A:640:ILE:HD11	2.01	0.42
3:T:140:TYR:CG	3:T:141:PRO:HA	2.54	0.42
1:A:544:LYS:NZ	1:A:544:LYS:HB3	2.34	0.42
3:L:134:CYS:HB2	3:L:148:TRP:CH2	2.54	0.42
3:L:149:LYS:HB2	3:L:149:LYS:HE2	1.72	0.42

Continued on next page...

Continued from previous page...

Atom-1	Atom-2	Interatomic distance (Å)	Clash overlap (Å)
2:H:3:GLN:HE22	2:S:3:GLN:HE22	1.64	0.42
3:T:108:ARG:NE	3:T:172:THR:HG22	2.34	0.42
1:A:533:PRO:HA	1:A:534:PRO:HD3	1.85	0.42
1:A:581:LEU:HD21	1:A:652:PHE:CE1	2.55	0.42
1:A:551:CYS:SG	1:A:556:TRP:HB2	2.60	0.41
2:H:67:ARG:HD3	2:H:87:ARG:NH1	2.35	0.41
1:A:590:PHE:HB2	1:A:642:ASN:O	2.20	0.41
2:H:123:THR:HG22	2:H:210:SER:HB3	2.01	0.41
3:L:83:PHE:CZ	3:L:106:ILE:HG12	2.55	0.41
1:P:662:ILE:HG12	1:P:734:SER:HB2	2.02	0.41
2:S:7:SER:HB3	2:S:21:SER:OG	2.20	0.41
3:T:122:ASP:O	3:T:126:LYS:HG2	2.20	0.41
1:A:719:GLU:HG3	1:A:737:SER:HB2	2.03	0.41
1:P:684:SER:HA	1:P:685:GLY:HA2	1.87	0.41
2:S:2:MET:N	2:S:2:MET:SD	2.92	0.41
2:H:83:LEU:HD23	2:H:83:LEU:HA	1.89	0.41
2:S:155:GLU:CB	2:S:156:PRO:HA	2.51	0.41
4:X:30:LEU:HA	4:X:30:LEU:HD23	1.86	0.41
3:L:186:TYR:O	3:L:211:ARG:HD2	2.21	0.41
2:S:88:SER:O	2:S:91:THR:HG22	2.20	0.41
3:T:158:ASN:O	3:T:179:LEU:HD12	2.21	0.41
4:X:25:GLU:O	4:X:29:ALA:N	2.52	0.41
1:A:576:GLU:OE1	1:A:576:GLU:N	2.53	0.40
1:P:668:PRO:HD2	1:P:673:THR:OG1	2.21	0.40
2:S:4:LEU:HD22	2:S:24:VAL:HG12	2.02	0.40
1:A:546:VAL:HG12	1:A:547:ARG:N	2.36	0.40
1:P:636:MET:HB2	1:P:636:MET:HE2	1.69	0.40
1:A:632:LYS:HE2	1:A:632:LYS:HB2	1.91	0.40

There are no symmetry-related clashes.

5.3 Torsion angles [i](#)

5.3.1 Protein backbone [i](#)

In the following table, the Percentiles column shows the percent Ramachandran outliers of the chain as a percentile score with respect to all X-ray entries followed by that with respect to entries of similar resolution.

The Analysed column shows the number of residues for which the backbone conformation was analysed, and the total number of residues.

Mol	Chain	Analysed	Favoured	Allowed	Outliers	Percentiles	
1	A	220/231 (95%)	213 (97%)	7 (3%)	0	100	100
1	P	220/231 (95%)	210 (96%)	10 (4%)	0	100	100
2	H	212/223 (95%)	205 (97%)	7 (3%)	0	100	100
2	S	212/223 (95%)	202 (95%)	10 (5%)	0	100	100
3	L	210/216 (97%)	203 (97%)	7 (3%)	0	100	100
3	T	210/216 (97%)	203 (97%)	7 (3%)	0	100	100
4	X	7/14 (50%)	7 (100%)	0	0	100	100
4	Y	8/14 (57%)	8 (100%)	0	0	100	100
All	All	1299/1368 (95%)	1251 (96%)	48 (4%)	0	100	100

There are no Ramachandran outliers to report.

5.3.2 Protein sidechains [i](#)

In the following table, the Percentiles column shows the percent sidechain outliers of the chain as a percentile score with respect to all X-ray entries followed by that with respect to entries of similar resolution.

The Analysed column shows the number of residues for which the sidechain conformation was analysed, and the total number of residues.

Mol	Chain	Analysed	Rotameric	Outliers	Percentiles	
1	A	196/205 (96%)	196 (100%)	0	100	100
1	P	196/205 (96%)	194 (99%)	2 (1%)	76	90
2	H	181/189 (96%)	179 (99%)	2 (1%)	73	88
2	S	181/189 (96%)	179 (99%)	2 (1%)	73	88
3	L	184/187 (98%)	183 (100%)	1 (0%)	88	96
3	T	184/187 (98%)	183 (100%)	1 (0%)	88	96
4	X	5/12 (42%)	5 (100%)	0	100	100
4	Y	6/12 (50%)	6 (100%)	0	100	100
All	All	1133/1186 (96%)	1125 (99%)	8 (1%)	84	94

All (8) residues with a non-rotameric sidechain are listed below:

Mol	Chain	Res	Type
2	H	87	ARG
2	H	89	GLU

Continued on next page...

Continued from previous page...

Mol	Chain	Res	Type
3	L	77	ASN
1	P	633	HIS
1	P	651	THR
2	S	194	SER
2	S	202	ILE
3	T	138	ASN

Some sidechains can be flipped to improve hydrogen bonding and reduce clashes. All (3) such sidechains are listed below:

Mol	Chain	Res	Type
2	H	1	GLN
2	H	3	GLN
3	L	3	GLN

5.3.3 RNA [i](#)

There are no RNA molecules in this entry.

5.4 Non-standard residues in protein, DNA, RNA chains [i](#)

There are no non-standard protein/DNA/RNA residues in this entry.

5.5 Carbohydrates [i](#)

There are no monosaccharides in this entry.

5.6 Ligand geometry [i](#)

2 ligands are modelled in this entry.

In the following table, the Counts columns list the number of bonds (or angles) for which Mogul statistics could be retrieved, the number of bonds (or angles) that are observed in the model and the number of bonds (or angles) that are defined in the Chemical Component Dictionary. The Link column lists molecule types, if any, to which the group is linked. The Z score for a bond length (or angle) is the number of standard deviations the observed value is removed from the expected value. A bond length (or angle) with $|Z| > 2$ is considered an outlier worth inspection. RMSZ is the root-mean-square of all Z scores of the bond lengths (or angles).

Mol	Type	Chain	Res	Link	Bond lengths			Bond angles		
					Counts	RMSZ	# Z > 2	Counts	RMSZ	# Z > 2
5	NAG	P	1000	1	14,14,15	0.53	0	17,19,21	0.89	1 (5%)
5	NAG	A	1000	1	14,14,15	0.31	0	17,19,21	0.73	1 (5%)

In the following table, the Chirals column lists the number of chiral outliers, the number of chiral centers analysed, the number of these observed in the model and the number defined in the Chemical Component Dictionary. Similar counts are reported in the Torsion and Rings columns. '-' means no outliers of that kind were identified.

Mol	Type	Chain	Res	Link	Chirals	Torsions	Rings
5	NAG	P	1000	1	-	2/6/23/26	0/1/1/1
5	NAG	A	1000	1	-	4/6/23/26	0/1/1/1

There are no bond length outliers.

All (2) bond angle outliers are listed below:

Mol	Chain	Res	Type	Atoms	Z	Observed(°)	Ideal(°)
5	P	1000	NAG	C1-O5-C5	2.98	116.23	112.19
5	A	1000	NAG	C1-O5-C5	2.06	114.98	112.19

There are no chirality outliers.

All (6) torsion outliers are listed below:

Mol	Chain	Res	Type	Atoms
5	A	1000	NAG	O5-C5-C6-O6
5	P	1000	NAG	O5-C5-C6-O6
5	A	1000	NAG	C8-C7-N2-C2
5	A	1000	NAG	O7-C7-N2-C2
5	P	1000	NAG	C4-C5-C6-O6
5	A	1000	NAG	C4-C5-C6-O6

There are no ring outliers.

No monomer is involved in short contacts.

5.7 Other polymers [\(i\)](#)

There are no such residues in this entry.

5.8 Polymer linkage issues

There are no chain breaks in this entry.

6 Fit of model and data

6.1 Protein, DNA and RNA chains

In the following table, the column labelled ‘#RSRZ> 2’ contains the number (and percentage) of RSRZ outliers, followed by percent RSRZ outliers for the chain as percentile scores relative to all X-ray entries and entries of similar resolution. The OWAB column contains the minimum, median, 95th percentile and maximum values of the occupancy-weighted average B-factor per residue. The column labelled ‘Q< 0.9’ lists the number of (and percentage) of residues with an average occupancy less than 0.9.

Mol	Chain	Analysed	<RSRZ>	#RSRZ>2	OWAB(Å ²)	Q<0.9
1	A	222/231 (96%)	-0.12	0 100 100	37, 48, 79, 95	0
1	P	222/231 (96%)	0.03	2 (0%) 84 82	45, 65, 86, 97	0
2	H	216/223 (96%)	-0.08	0 100 100	33, 47, 70, 85	0
2	S	216/223 (96%)	0.33	14 (6%) 18 14	44, 72, 102, 120	0
3	L	212/216 (98%)	-0.18	0 100 100	32, 49, 78, 84	0
3	T	212/216 (98%)	0.06	3 (1%) 75 71	40, 56, 92, 105	0
4	X	9/14 (64%)	1.10	1 (11%) 5 3	85, 91, 96, 101	0
4	Y	10/14 (71%)	1.79	4 (40%) 0 0	88, 96, 100, 101	0
All	All	1319/1368 (96%)	0.03	24 (1%) 68 64	32, 56, 93, 120	0

All (24) RSRZ outliers are listed below:

Mol	Chain	Res	Type	RSRZ
4	X	30	LEU	5.0
2	S	194	SER	4.5
2	S	218	VAL	3.6
2	S	214	VAL	3.5
4	Y	31	ALA	3.2
2	S	221	LYS	3.0
2	S	165	ALA	2.9
2	S	197	GLY	2.8
2	S	202	ILE	2.8
3	T	210	ASN	2.7
2	S	196	LEU	2.6
1	P	569	PHE	2.5
2	S	201	TYR	2.5
3	T	212	GLY	2.5
3	T	130	ALA	2.5
1	P	586	TRP	2.4

Continued on next page...

Continued from previous page...

Mol	Chain	Res	Type	RSRZ
2	S	161	TRP	2.3
4	Y	30	LEU	2.3
2	S	217	LYS	2.3
2	S	199	GLN	2.3
2	S	198	THR	2.2
4	Y	23	THR	2.2
4	Y	26	CYS	2.1
2	S	141	GLY	2.0

6.2 Non-standard residues in protein, DNA, RNA chains [i](#)

There are no non-standard protein/DNA/RNA residues in this entry.

6.3 Carbohydrates [i](#)

There are no monosaccharides in this entry.

6.4 Ligands [i](#)

In the following table, the Atoms column lists the number of modelled atoms in the group and the number defined in the chemical component dictionary. The B-factors column lists the minimum, median, 95th percentile and maximum values of B factors of atoms in the group. The column labelled 'Q< 0.9' lists the number of atoms with occupancy less than 0.9.

Mol	Type	Chain	Res	Atoms	RSCC	RSR	B-factors(Å ²)	Q<0.9
5	NAG	P	1000	14/15	0.74	0.25	86,96,104,104	0
5	NAG	A	1000	14/15	0.90	0.30	73,77,82,82	0

6.5 Other polymers [i](#)

There are no such residues in this entry.