



# Full wwPDB X-ray Structure Validation Report ⓘ

Aug 21, 2020 – 06:44 PM BST

PDB ID : 5KSD  
Title : Crystal Structure of a Plasma Membrane Proton Pump  
Authors : Croll, T.; Pedersen, B.P.; Nissen, P.  
Deposited on : 2016-07-08  
Resolution : 3.50 Å(reported)

This is a Full wwPDB X-ray Structure Validation Report for a publicly released PDB entry.

We welcome your comments at [validation@mail.wwpdb.org](mailto:validation@mail.wwpdb.org)

A user guide is available at

<https://www.wwpdb.org/validation/2017/XrayValidationReportHelp>

with specific help available everywhere you see the ⓘ symbol.

---

The following versions of software and data (see [references ⓘ](#)) were used in the production of this report:

MolProbity : 4.02b-467  
Mogul : 1.8.5 (274361), CSD as541be (2020)  
Xtriage (Phenix) : 1.13  
EDS : 2.13.1  
buster-report : 1.1.7 (2018)  
Percentile statistics : 20191225.v01 (using entries in the PDB archive December 25th 2019)  
Refmac : 5.8.0158  
CCP4 : 7.0.044 (Gargrove)  
Ideal geometry (proteins) : Engh & Huber (2001)  
Ideal geometry (DNA, RNA) : Parkinson et al. (1996)  
Validation Pipeline (wwPDB-VP) : 2.13.1

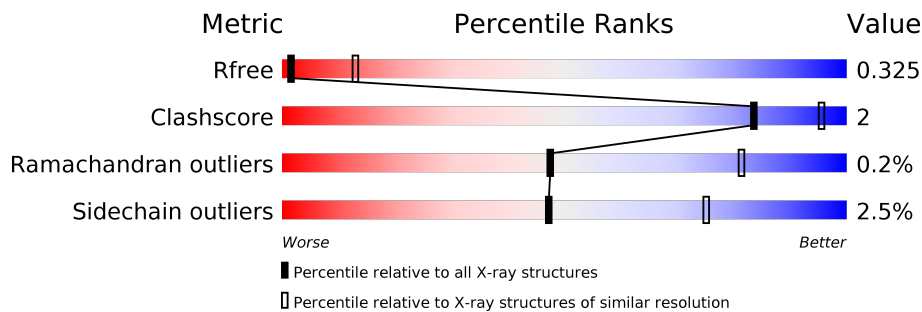
# 1 Overall quality at a glance

The following experimental techniques were used to determine the structure:

*X-RAY DIFFRACTION*

The reported resolution of this entry is 3.50 Å.

Percentile scores (ranging between 0-100) for global validation metrics of the entry are shown in the following graphic. The table shows the number of entries on which the scores are based.



Metric	Whole archive (#Entries)	Similar resolution (#Entries, resolution range(Å))
$R_{free}$	130704	1659 (3.60-3.40)
Clashscore	141614	1036 (3.58-3.42)
Ramachandran outliers	138981	1005 (3.58-3.42)
Sidechain outliers	138945	1006 (3.58-3.42)

The table below summarises the geometric issues observed across the polymeric chains and their fit to the electron density. The red, orange, yellow and green segments on the lower bar indicate the fraction of residues that contain outliers for  $\geq 3$ , 2, 1 and 0 types of geometric quality criteria respectively. A grey segment represents the fraction of residues that are not modelled. The numeric value for each fraction is indicated below the corresponding segment, with a dot representing fractions  $\leq 5\%$

Mol	Chain	Length	Quality of chain
1	A	833	
1	B	833	

## 2 Entry composition

There are 5 unique types of molecules in this entry. The entry contains 12970 atoms, of which 0 are hydrogens and 0 are deuteriums.

In the tables below, the ZeroOcc column contains the number of atoms modelled with zero occupancy, the AltConf column contains the number of residues with at least one atom in alternate conformation and the Trace column contains the number of residues modelled with at most 2 atoms.

- Molecule 1 is a protein called ATPase 2, plasma membrane-type.

Mol	Chain	Residues	Atoms					ZeroOcc	AltConf	Trace
			Total	C	N	O	S			
1	A	833	6416	4132	1082	1169	33	0	0	0
1	B	833	6416	4132	1082	1169	33	0	0	0

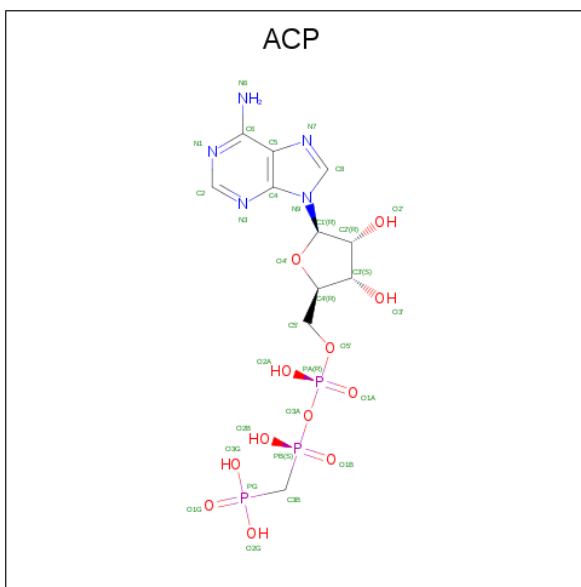
- Molecule 2 is MAGNESIUM ION (three-letter code: MG) (formula: Mg).

Mol	Chain	Residues	Atoms		ZeroOcc	AltConf
2	B	2	Total	Mg	0	0
			2	2		
2	A	2	Total	Mg	0	0
			2	2		

- Molecule 3 is POTASSIUM ION (three-letter code: K) (formula: K).

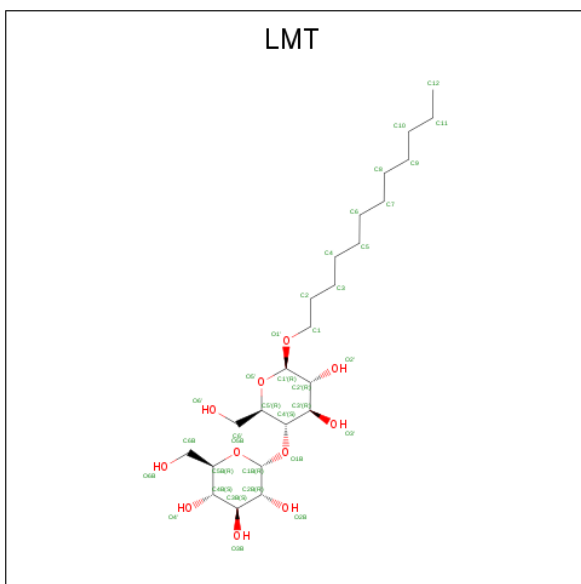
Mol	Chain	Residues	Atoms		ZeroOcc	AltConf
3	B	1	Total	K	0	0
			1	1		
3	A	1	Total	K	0	0
			1	1		

- Molecule 4 is PHOSPHOMETHYLPHOSPHONIC ACID ADENYLATE ESTER (three-letter code: ACP) (formula: C<sub>11</sub>H<sub>18</sub>N<sub>5</sub>O<sub>12</sub>P<sub>3</sub>).



Mol	Chain	Residues	Atoms				ZeroOcc	AltConf	
			Total	C	N	O			P
4	A	1	31	11	5	12	3	0	0
4	B	1	31	11	5	12	3	0	0

- Molecule 5 is DODECYL-BETA-D-MALTOSE (three-letter code: LMT) (formula:  $C_{24}H_{46}O_{11}$ ).



Mol	Chain	Residues	Atoms		ZeroOcc	AltConf
			Total	C O		
5	A	1	35	24 11	0	0

*Continued on next page...*

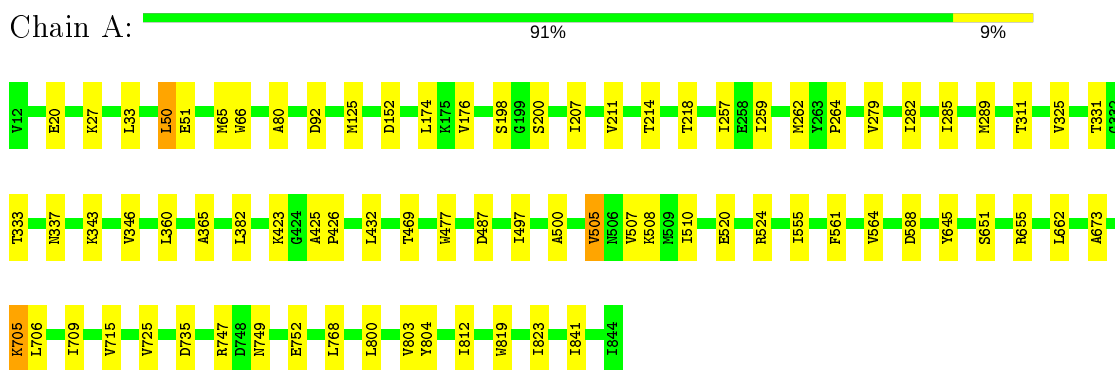
*Continued from previous page...*

Mol	Chain	Residues	Atoms			ZeroOcc	AltConf
			Total	C	O		
5	B	1	35	24	11	0	0

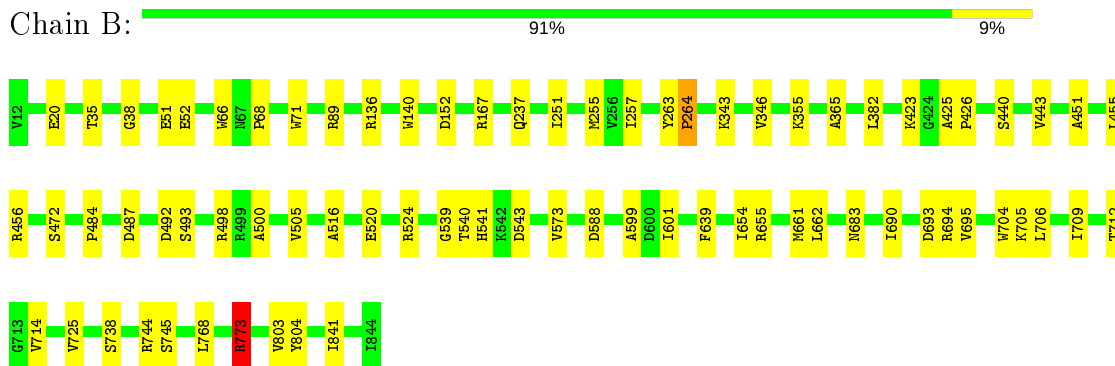
### 3 Residue-property plots [i](#)

These plots are drawn for all protein, RNA, DNA and oligosaccharide chains in the entry. The first graphic for a chain summarises the proportions of the various outlier classes displayed in the second graphic. The second graphic shows the sequence view annotated by issues in geometry. Residues are color-coded according to the number of geometric quality criteria for which they contain at least one outlier: green = 0, yellow = 1, orange = 2 and red = 3 or more. Stretches of 2 or more consecutive residues without any outlier are shown as a green connector. Residues present in the sample, but not in the model, are shown in grey.

- Molecule 1: ATPase 2, plasma membrane-type



- Molecule 1: ATPase 2, plasma membrane-type



## 4 Data and refinement statistics

Property	Value	Source
Space group	P 21 21 21	Depositor
Cell constants a, b, c, $\alpha$ , $\beta$ , $\gamma$	85.29Å 144.42Å 312.11Å 90.00° 90.00° 90.00°	Depositor
Resolution (Å)	52.02 – 3.50 84.41 – 3.50	Depositor EDS
% Data completeness (in resolution range)	99.7 (52.02-3.50) 99.7 (84.41-3.50)	Depositor EDS
$R_{merge}$	0.15	Depositor
$R_{sym}$	(Not available)	Depositor
$\langle I/\sigma(I) \rangle$ <sup>1</sup>	1.64 (at 3.49Å)	Xtrriage
Refinement program	PHENIX dev_2376	Depositor
R, $R_{free}$	0.287 , 0.324 0.287 , 0.325	Depositor DCC
$R_{free}$ test set	2000 reflections (4.04%)	wwPDB-VP
Wilson B-factor (Å <sup>2</sup> )	109.6	Xtrriage
Anisotropy	0.305	Xtrriage
Bulk solvent $k_{sol}$ (e/Å <sup>3</sup> ), $B_{sol}$ (Å <sup>2</sup> )	0.24 , 35.0	EDS
L-test for twinning <sup>2</sup>	$\langle  L  \rangle = 0.32$ , $\langle L^2 \rangle = 0.15$	Xtrriage
Estimated twinning fraction	No twinning to report.	Xtrriage
$F_o, F_c$ correlation	0.70	EDS
Total number of atoms	12970	wwPDB-VP
Average B, all atoms (Å <sup>2</sup> )	139.0	wwPDB-VP

Xtrriage's analysis on translational NCS is as follows: *The largest off-origin peak in the Patterson function is 5.34% of the height of the origin peak. No significant pseudotranslation is detected.*

<sup>1</sup>Intensities estimated from amplitudes.

<sup>2</sup>Theoretical values of  $\langle |L| \rangle$ ,  $\langle L^2 \rangle$  for acentric reflections are 0.5, 0.333 respectively for untwinned datasets, and 0.375, 0.2 for perfectly twinned datasets.

## 5 Model quality [i](#)

### 5.1 Standard geometry [i](#)

Bond lengths and bond angles in the following residue types are not validated in this section: K, ACP, LMT, MG

The Z score for a bond length (or angle) is the number of standard deviations the observed value is removed from the expected value. A bond length (or angle) with  $|Z| > 5$  is considered an outlier worth inspection. RMSZ is the root-mean-square of all Z scores of the bond lengths (or angles).

Mol	Chain	Bond lengths		Bond angles	
		RMSZ	# Z  >5	RMSZ	# Z  >5
1	A	0.27	1/6542 (0.0%)	0.50	0/8865
1	B	0.26	0/6542	0.53	2/8865 (0.0%)
All	All	0.27	1/13084 (0.0%)	0.51	2/17730 (0.0%)

Chiral center outliers are detected by calculating the chiral volume of a chiral center and verifying if the center is modelled as a planar moiety or with the opposite hand. A planarity outlier is detected by checking planarity of atoms in a peptide group, atoms in a mainchain group or atoms of a sidechain that are expected to be planar.

Mol	Chain	#Chirality outliers	#Planarity outliers
1	A	0	1
1	B	0	4
All	All	0	5

All (1) bond length outliers are listed below:

Mol	Chain	Res	Type	Atoms	Z	Observed(Å)	Ideal(Å)
1	A	285	ILE	C-N	8.26	1.50	1.34

All (2) bond angle outliers are listed below:

Mol	Chain	Res	Type	Atoms	Z	Observed(°)	Ideal(°)
1	B	773	ARG	CD-NE-CZ	9.48	136.87	123.60
1	B	773	ARG	NE-CZ-NH1	-5.90	117.35	120.30

There are no chirality outliers.

All (5) planarity outliers are listed below:



Mol	Chain	Res	Type	Group
1	A	487	ASP	Peptide
1	B	456	ARG	Sidechain
1	B	472	SER	Peptide
1	B	487	ASP	Peptide
1	B	773	ARG	Sidechain

## 5.2 Too-close contacts [i](#)

In the following table, the Non-H and H(model) columns list the number of non-hydrogen atoms and hydrogen atoms in the chain respectively. The H(added) column lists the number of hydrogen atoms added and optimized by MolProbity. The Clashes column lists the number of clashes within the asymmetric unit, whereas Symm-Clashes lists symmetry related clashes.

Mol	Chain	Non-H	H(model)	H(added)	Clashes	Symm-Clashes
1	A	6416	0	6588	31	0
1	B	6416	0	6588	32	0
2	A	2	0	0	0	0
2	B	2	0	0	0	0
3	A	1	0	0	0	0
3	B	1	0	0	0	0
4	A	31	0	13	0	0
4	B	31	0	13	0	0
5	A	35	0	46	0	0
5	B	35	0	46	0	0
All	All	12970	0	13294	63	0

The all-atom clashscore is defined as the number of clashes found per 1000 atoms (including hydrogen atoms). The all-atom clashscore for this structure is 2.

All (63) close contacts within the same asymmetric unit are listed below, sorted by their clash magnitude.

Atom-1	Atom-2	Interatomic distance (Å)	Clash overlap (Å)
1:A:497:ILE:HD13	1:A:507:VAL:HB	1.83	0.60
1:B:662:LEU:HD23	1:B:725:VAL:HG21	1.85	0.57
1:A:520:GLU:HG3	1:A:524:ARG:HH12	1.70	0.57
1:A:500:ALA:HB1	1:A:505:VAL:HG23	1.87	0.56
1:A:651:SER:HB3	1:A:768:LEU:HD21	1.88	0.55
1:A:279:VAL:HA	1:A:282:ILE:HG22	1.89	0.54
1:A:331:THR:O	1:A:337:ASN:ND2	2.40	0.54
1:B:68:PRO:HA	1:B:71:TRP:CD1	2.43	0.54
1:B:451:ALA:HB1	1:B:516:ALA:HB3	1.90	0.54

*Continued on next page...*

*Continued from previous page...*

Atom-1	Atom-2	Interatomic distance (Å)	Clash overlap (Å)
1:B:712:THR:HA	1:B:841:ILE:HG12	1.90	0.53
1:A:365:ALA:HB3	1:A:423:LYS:HG3	1.91	0.53
1:B:520:GLU:HG3	1:B:524:ARG:HH12	1.76	0.51
1:A:80:ALA:HB1	1:A:92:ASP:HB3	1.92	0.51
1:B:500:ALA:HB1	1:B:505:VAL:HG13	1.93	0.50
1:B:573:VAL:HG21	1:B:599:ALA:HA	1.94	0.49
1:B:492:ASP:OD2	1:B:493:SER:N	2.46	0.49
1:A:662:LEU:HD23	1:A:725:VAL:HG21	1.95	0.48
1:A:432:LEU:HB3	1:A:477:TRP:CD1	2.49	0.48
1:B:343:LYS:HA	1:B:346:VAL:HG23	1.95	0.48
1:B:346:VAL:O	1:B:355:LYS:NZ	2.35	0.47
1:B:455:LEU:HD13	1:B:484:PRO:HB2	1.94	0.47
1:A:555:ILE:HG23	1:A:561:PHE:CZ	2.50	0.46
1:B:639:PHE:CE2	1:B:704:TRP:HB2	2.51	0.46
1:B:540:THR:HG23	1:B:541:HIS:H	1.81	0.46
1:B:639:PHE:CZ	1:B:704:TRP:HB2	2.52	0.46
1:A:555:ILE:HG23	1:A:561:PHE:HZ	1.80	0.45
1:A:800:LEU:HA	1:A:803:VAL:HG22	1.97	0.45
1:B:51:GLU:O	1:B:52:GLU:HB3	2.16	0.45
1:A:152:ASP:O	1:A:211:VAL:HG22	2.16	0.45
1:A:705:LYS:H	1:A:705:LYS:HD2	1.81	0.45
1:A:749:ASN:ND2	1:A:752:GLU:OE1	2.50	0.45
1:B:738:SER:HB3	1:B:745:SER:HA	1.99	0.45
1:A:289:MET:HA	1:A:645:TYR:HE2	1.81	0.45
1:B:690:ILE:HG23	1:B:773:ARG:NH1	2.33	0.44
1:B:263:TYR:HB3	1:B:264:PRO:HD3	2.00	0.44
1:A:50:LEU:HD13	1:A:51:GLU:H	1.82	0.44
1:B:539:GLY:HA2	1:B:543:ASP:HA	1.98	0.44
1:A:715:VAL:HG21	1:A:841:ILE:HB	1.99	0.44
1:A:343:LYS:HA	1:A:346:VAL:HG23	2.00	0.44
1:B:136:ARG:NH2	1:B:152:ASP:OD1	2.41	0.43
1:A:803:VAL:HG23	1:A:804:TYR:CG	2.53	0.43
1:A:259:ILE:HA	1:A:262:MET:HG2	2.00	0.43
1:A:706:LEU:HD23	1:A:709:ILE:HD11	2.00	0.43
1:A:735:ASP:CG	1:A:747:ARG:HH21	2.22	0.43
1:B:693:ASP:OD1	1:B:694:ARG:N	2.40	0.43
1:B:68:PRO:HA	1:B:71:TRP:HD1	1.83	0.43
1:A:176:VAL:HB	1:A:200:SER:OG	2.19	0.42
1:B:803:VAL:HG23	1:B:804:TYR:CG	2.54	0.42
1:A:510:ILE:HG23	1:A:564:VAL:HG21	2.01	0.42
1:B:35:THR:HG23	1:B:38:GLY:H	1.84	0.42

*Continued on next page...*

Continued from previous page...

Atom-1	Atom-2	Interatomic distance (Å)	Clash overlap (Å)
1:B:425:ALA:HA	1:B:426:PRO:HD3	1.88	0.42
1:B:654:ILE:HG12	1:B:714:VAL:HA	2.02	0.42
1:A:279:VAL:HG12	1:A:673:ALA:HA	2.02	0.41
1:A:198:SER:OG	1:A:218:THR:HG21	2.20	0.41
1:B:365:ALA:HB3	1:B:423:LYS:HG3	2.01	0.41
1:A:325:VAL:HG21	1:A:508:LYS:HE2	2.03	0.41
1:B:251:ILE:O	1:B:255:MET:HG2	2.21	0.41
1:A:425:ALA:HA	1:A:426:PRO:HD3	1.92	0.41
1:B:20:GLU:HG3	1:B:167:ARG:HH22	1.86	0.41
1:B:601:ILE:N	1:B:601:ILE:HD12	2.35	0.41
1:A:819:TRP:CD1	1:A:823:ILE:HD11	2.56	0.40
1:B:706:LEU:HD23	1:B:709:ILE:HD11	2.02	0.40
1:B:440:SER:HA	1:B:443:VAL:HG22	2.03	0.40

There are no symmetry-related clashes.

## 5.3 Torsion angles [i](#)

### 5.3.1 Protein backbone [i](#)

In the following table, the Percentiles column shows the percent Ramachandran outliers of the chain as a percentile score with respect to all X-ray entries followed by that with respect to entries of similar resolution.

The Analysed column shows the number of residues for which the backbone conformation was analysed, and the total number of residues.

Mol	Chain	Analysed	Favoured	Allowed	Outliers	Percentiles
1	A	831/833 (100%)	785 (94%)	44 (5%)	2 (0%)	47 81
1	B	831/833 (100%)	777 (94%)	52 (6%)	2 (0%)	47 81
All	All	1662/1666 (100%)	1562 (94%)	96 (6%)	4 (0%)	47 81

All (4) Ramachandran outliers are listed below:

Mol	Chain	Res	Type
1	A	257	ILE
1	B	257	ILE
1	A	264	PRO
1	B	264	PRO

### 5.3.2 Protein sidechains [i](#)

In the following table, the Percentiles column shows the percent sidechain outliers of the chain as a percentile score with respect to all X-ray entries followed by that with respect to entries of similar resolution.

The Analysed column shows the number of residues for which the sidechain conformation was analysed, and the total number of residues.

Mol	Chain	Analysed	Rotameric	Outliers	Percentiles	
1	A	685/685 (100%)	665 (97%)	20 (3%)	42	71
1	B	685/685 (100%)	671 (98%)	14 (2%)	55	79
All	All	1370/1370 (100%)	1336 (98%)	34 (2%)	47	75

All (34) residues with a non-rotameric sidechain are listed below:

Mol	Chain	Res	Type
1	A	20	GLU
1	A	27	LYS
1	A	33	LEU
1	A	50	LEU
1	A	65	MET
1	A	66	TRP
1	A	125	MET
1	A	174	LEU
1	A	207	ILE
1	A	214	THR
1	A	311	THR
1	A	333	THR
1	A	360	LEU
1	A	382	LEU
1	A	469	THR
1	A	505	VAL
1	A	588	ASP
1	A	655	ARG
1	A	705	LYS
1	A	812	ILE
1	B	66	TRP
1	B	89	ARG
1	B	140	TRP
1	B	237	GLN
1	B	382	LEU
1	B	498	ARG
1	B	588	ASP

*Continued on next page...*

*Continued from previous page...*

Mol	Chain	Res	Type
1	B	655	ARG
1	B	661	MET
1	B	683	ASN
1	B	695	VAL
1	B	705	LYS
1	B	744	ARG
1	B	768	LEU

Some sidechains can be flipped to improve hydrogen bonding and reduce clashes. All (1) such sidechains are listed below:

Mol	Chain	Res	Type
1	B	720	GLN

### 5.3.3 RNA [i](#)

There are no RNA molecules in this entry.

### 5.4 Non-standard residues in protein, DNA, RNA chains [i](#)

There are no non-standard protein/DNA/RNA residues in this entry.

### 5.5 Carbohydrates [i](#)

There are no monosaccharides in this entry.

### 5.6 Ligand geometry [i](#)

Of 10 ligands modelled in this entry, 6 are monoatomic - leaving 4 for Mogul analysis.

In the following table, the Counts columns list the number of bonds (or angles) for which Mogul statistics could be retrieved, the number of bonds (or angles) that are observed in the model and the number of bonds (or angles) that are defined in the Chemical Component Dictionary. The Link column lists molecule types, if any, to which the group is linked. The Z score for a bond length (or angle) is the number of standard deviations the observed value is removed from the expected value. A bond length (or angle) with  $|Z| > 2$  is considered an outlier worth inspection. RMSZ is the root-mean-square of all Z scores of the bond lengths (or angles).

Mol	Type	Chain	Res	Link	Bond lengths			Bond angles		
					Counts	RMSZ	$\# Z  > 2$	Counts	RMSZ	$\# Z  > 2$
5	LMT	A	905	-	36,36,36	1.21	4 (11%)	47,47,47	0.93	1 (2%)

Mol	Type	Chain	Res	Link	Bond lengths			Bond angles		
					Counts	RMSZ	# Z  > 2	Counts	RMSZ	# Z  > 2
4	ACP	B	904	2	27,33,33	4.76	10 (37%)	32,52,52	2.52	5 (15%)
4	ACP	A	904	2	27,33,33	4.74	9 (33%)	32,52,52	2.53	6 (18%)
5	LMT	B	905	-	36,36,36	1.22	4 (11%)	47,47,47	1.00	2 (4%)

In the following table, the Chirals column lists the number of chiral outliers, the number of chiral centers analysed, the number of these observed in the model and the number defined in the Chemical Component Dictionary. Similar counts are reported in the Torsion and Rings columns. '-' means no outliers of that kind were identified.

Mol	Type	Chain	Res	Link	Chirals	Torsions	Rings
5	LMT	A	905	-	-	5/21/61/61	0/2/2/2
4	ACP	B	904	2	-	2/15/38/38	0/3/3/3
4	ACP	A	904	2	-	2/15/38/38	0/3/3/3
5	LMT	B	905	-	-	4/21/61/61	0/2/2/2

All (27) bond length outliers are listed below:

Mol	Chain	Res	Type	Atoms	Z	Observed(Å)	Ideal(Å)
4	B	904	ACP	O4'-C1'	14.68	1.61	1.41
4	A	904	ACP	O4'-C1'	14.66	1.61	1.41
4	B	904	ACP	C2'-C1'	-14.25	1.32	1.53
4	A	904	ACP	C2'-C1'	-14.05	1.32	1.53
4	B	904	ACP	PB-O3A	7.36	1.66	1.58
4	A	904	ACP	PB-O3A	7.13	1.66	1.58
4	A	904	ACP	O4'-C4'	-6.71	1.30	1.45
4	B	904	ACP	O4'-C4'	-6.62	1.30	1.45
4	A	904	ACP	C6-N6	5.05	1.52	1.34
4	B	904	ACP	C6-N6	5.03	1.52	1.34
4	A	904	ACP	O2'-C2'	3.83	1.52	1.43
4	B	904	ACP	O2'-C2'	3.78	1.51	1.43
4	B	904	ACP	C2-N3	3.38	1.37	1.32
4	A	904	ACP	C2-N3	3.38	1.37	1.32
4	A	904	ACP	PB-O2B	-3.15	1.49	1.56
5	B	905	LMT	O5'-C1'	3.04	1.49	1.41
5	A	905	LMT	O5'-C1'	3.02	1.49	1.41
5	B	905	LMT	O5B-C1B	2.81	1.49	1.41
4	A	904	ACP	O3'-C3'	-2.76	1.36	1.43
4	B	904	ACP	O3'-C3'	-2.73	1.36	1.43
5	A	905	LMT	O5B-C1B	2.65	1.48	1.41
4	B	904	ACP	PB-O2B	-2.64	1.50	1.56
5	A	905	LMT	C2-C1	2.44	1.61	1.51

Continued on next page...

Continued from previous page...

Mol	Chain	Res	Type	Atoms	Z	Observed(Å)	Ideal(Å)
5	B	905	LMT	C2-C1	2.38	1.61	1.51
5	B	905	LMT	O3B-C3B	2.18	1.48	1.43
5	A	905	LMT	O3B-C3B	2.14	1.48	1.43
4	B	904	ACP	PA-O5'	2.06	1.67	1.59

All (14) bond angle outliers are listed below:

Mol	Chain	Res	Type	Atoms	Z	Observed(°)	Ideal(°)
4	B	904	ACP	C5-C6-N6	9.86	135.34	120.35
4	A	904	ACP	C5-C6-N6	9.75	135.18	120.35
4	B	904	ACP	N6-C6-N1	-6.70	104.66	118.57
4	A	904	ACP	N6-C6-N1	-6.60	104.86	118.57
4	A	904	ACP	N3-C2-N1	-5.71	119.75	128.68
4	B	904	ACP	N3-C2-N1	-5.71	119.75	128.68
5	B	905	LMT	C1B-O1B-C4'	-3.21	110.02	117.96
5	A	905	LMT	C1B-O1B-C4'	-2.98	110.60	117.96
4	A	904	ACP	C3'-C2'-C1'	2.57	104.84	100.98
4	B	904	ACP	C3'-C2'-C1'	2.53	104.79	100.98
4	A	904	ACP	PA-O3A-PB	-2.51	124.60	132.56
4	B	904	ACP	PA-O3A-PB	-2.44	124.82	132.56
4	A	904	ACP	C5'-C4'-C3'	-2.10	107.31	115.18
5	B	905	LMT	O1'-C1'-C2'	2.05	111.50	108.30

There are no chirality outliers.

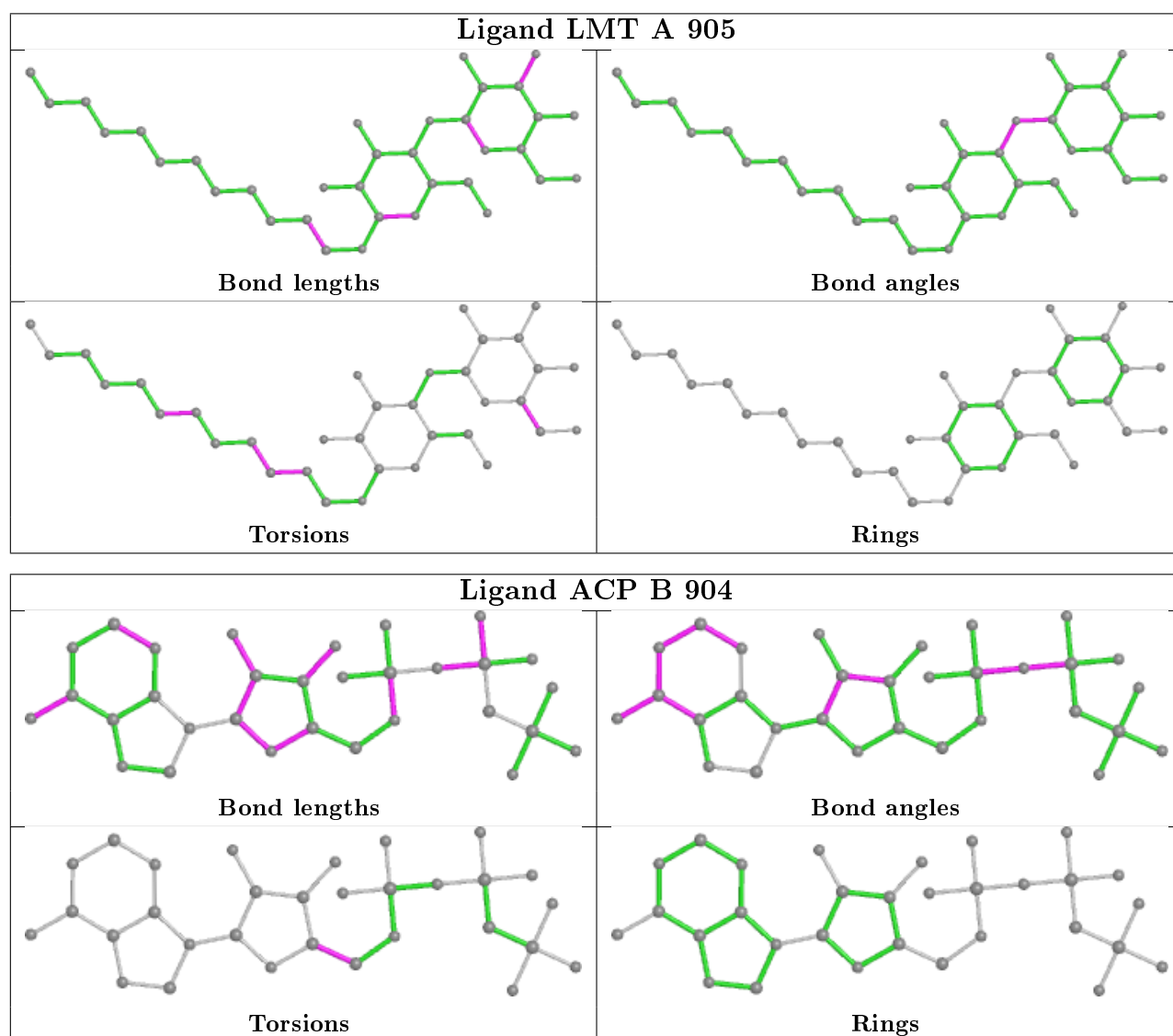
All (13) torsion outliers are listed below:

Mol	Chain	Res	Type	Atoms
5	A	905	LMT	O5B-C5B-C6B-O6B
5	B	905	LMT	C2'-C1'-O1'-C1
4	A	904	ACP	O4'-C4'-C5'-O5'
4	B	904	ACP	O4'-C4'-C5'-O5'
5	B	905	LMT	O5B-C5B-C6B-O6B
5	B	905	LMT	C6-C7-C8-C9
4	B	904	ACP	C3'-C4'-C5'-O5'
5	A	905	LMT	C4B-C5B-C6B-O6B
5	B	905	LMT	O5'-C1'-O1'-C1
5	A	905	LMT	C5-C6-C7-C8
5	A	905	LMT	C1-C2-C3-C4
4	A	904	ACP	C3'-C4'-C5'-O5'
5	A	905	LMT	C2-C3-C4-C5

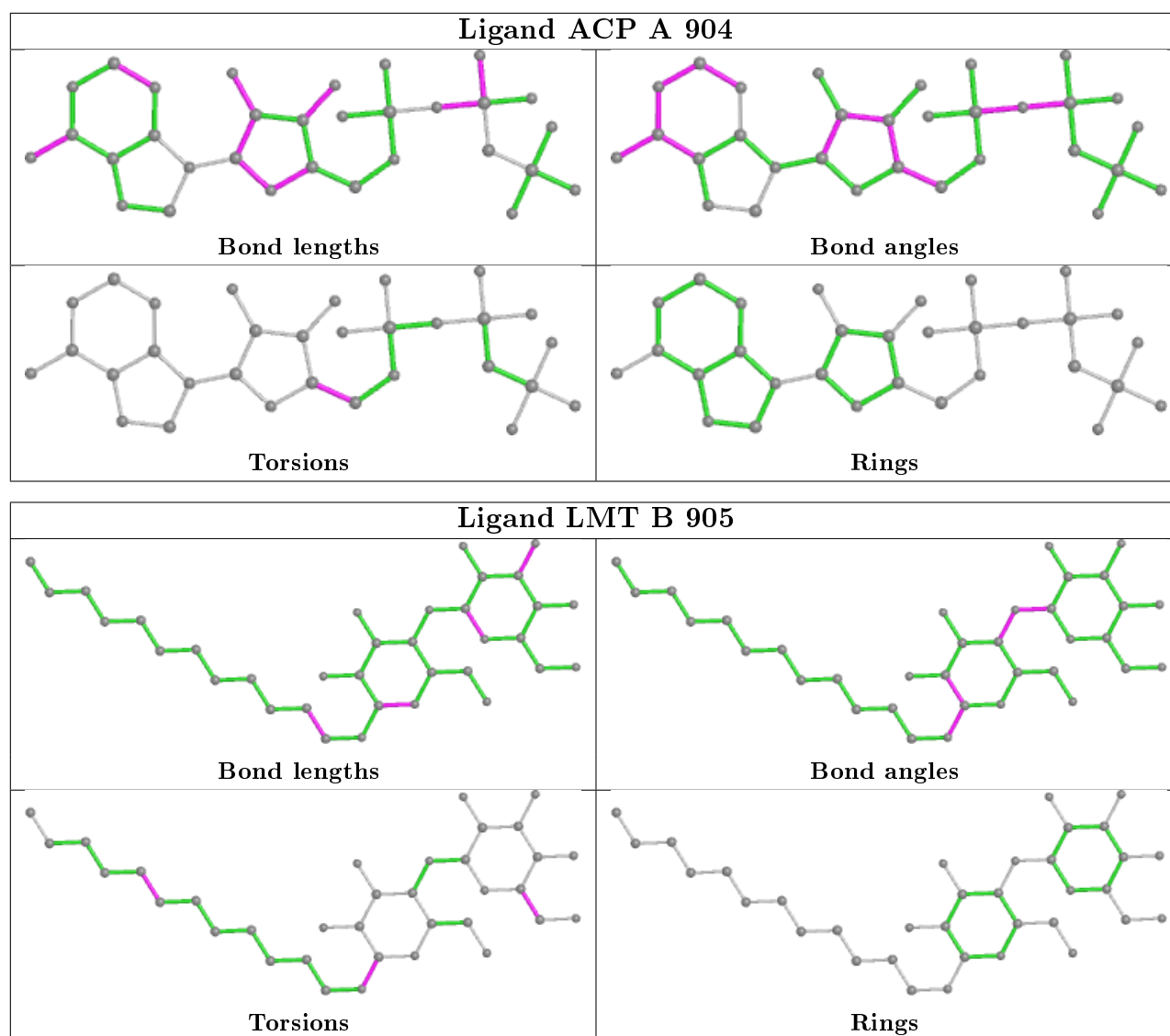
There are no ring outliers.

No monomer is involved in short contacts.

The following is a two-dimensional graphical depiction of Mogul quality analysis of bond lengths, bond angles, torsion angles, and ring geometry for all instances of the Ligand of Interest. In addition, ligands with molecular weight > 250 and outliers as shown on the validation Tables will also be included. For torsion angles, if less than 5% of the Mogul distribution of torsion angles is within 10 degrees of the torsion angle in question, then that torsion angle is considered an outlier. Any bond that is central to one or more torsion angles identified as an outlier by Mogul will be highlighted in the graph. For rings, the root-mean-square deviation (RMSD) between the ring in question and similar rings identified by Mogul is calculated over all ring torsion angles. If the average RMSD is greater than 60 degrees and the minimal RMSD between the ring in question and any Mogul-identified rings is also greater than 60 degrees, then that ring is considered an outlier. The outliers are highlighted in purple. The color gray indicates Mogul did not find sufficient equivalents in the CSD to analyse the geometry.







## 5.7 Other polymers [i](#)

There are no such residues in this entry.

## 5.8 Polymer linkage issues [i](#)

There are no chain breaks in this entry.

## 6 Fit of model and data

### 6.1 Protein, DNA and RNA chains

Unable to reproduce the depositors R factor - this section is therefore empty.

### 6.2 Non-standard residues in protein, DNA, RNA chains

Unable to reproduce the depositors R factor - this section is therefore empty.

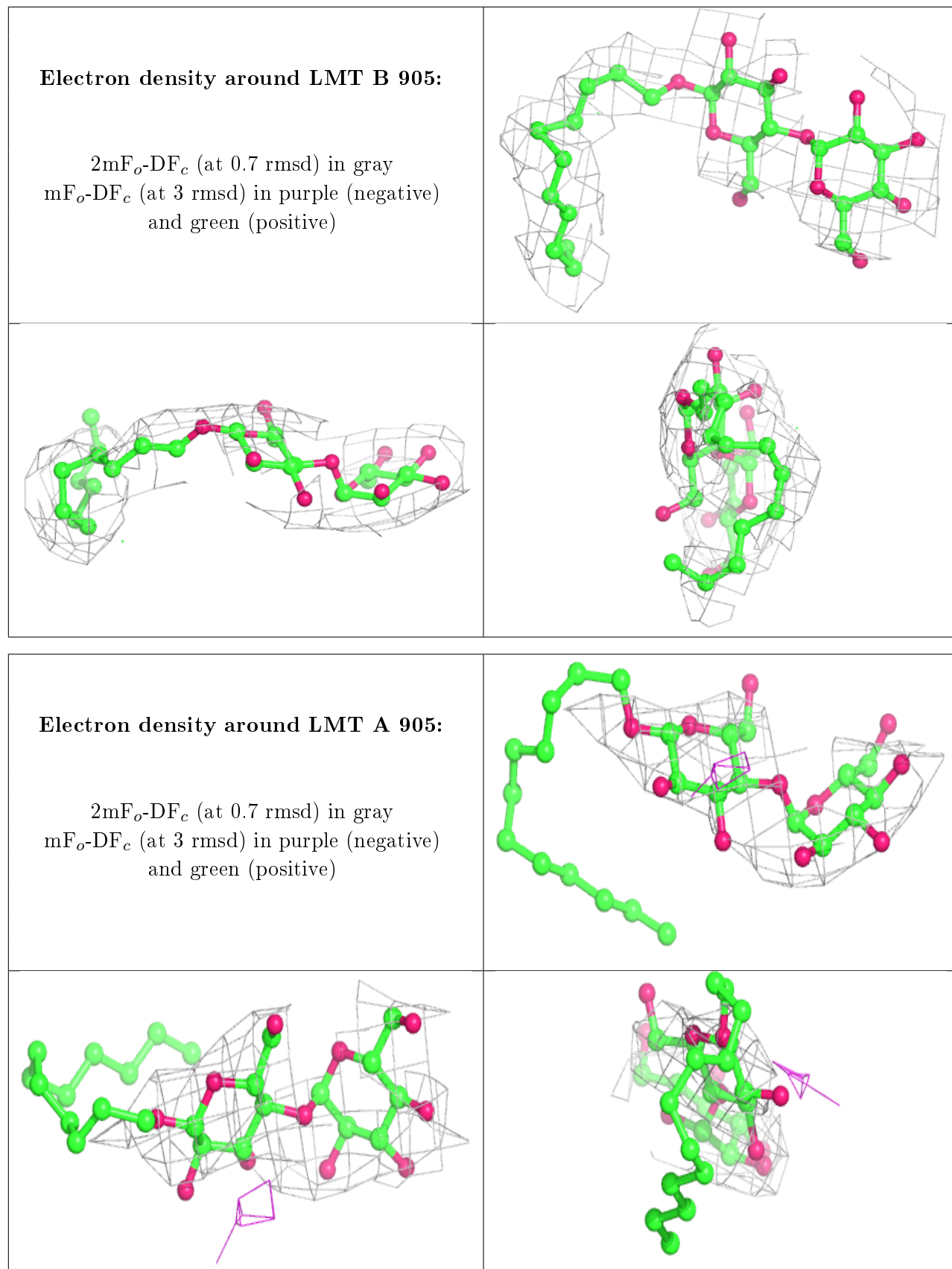
### 6.3 Carbohydrates

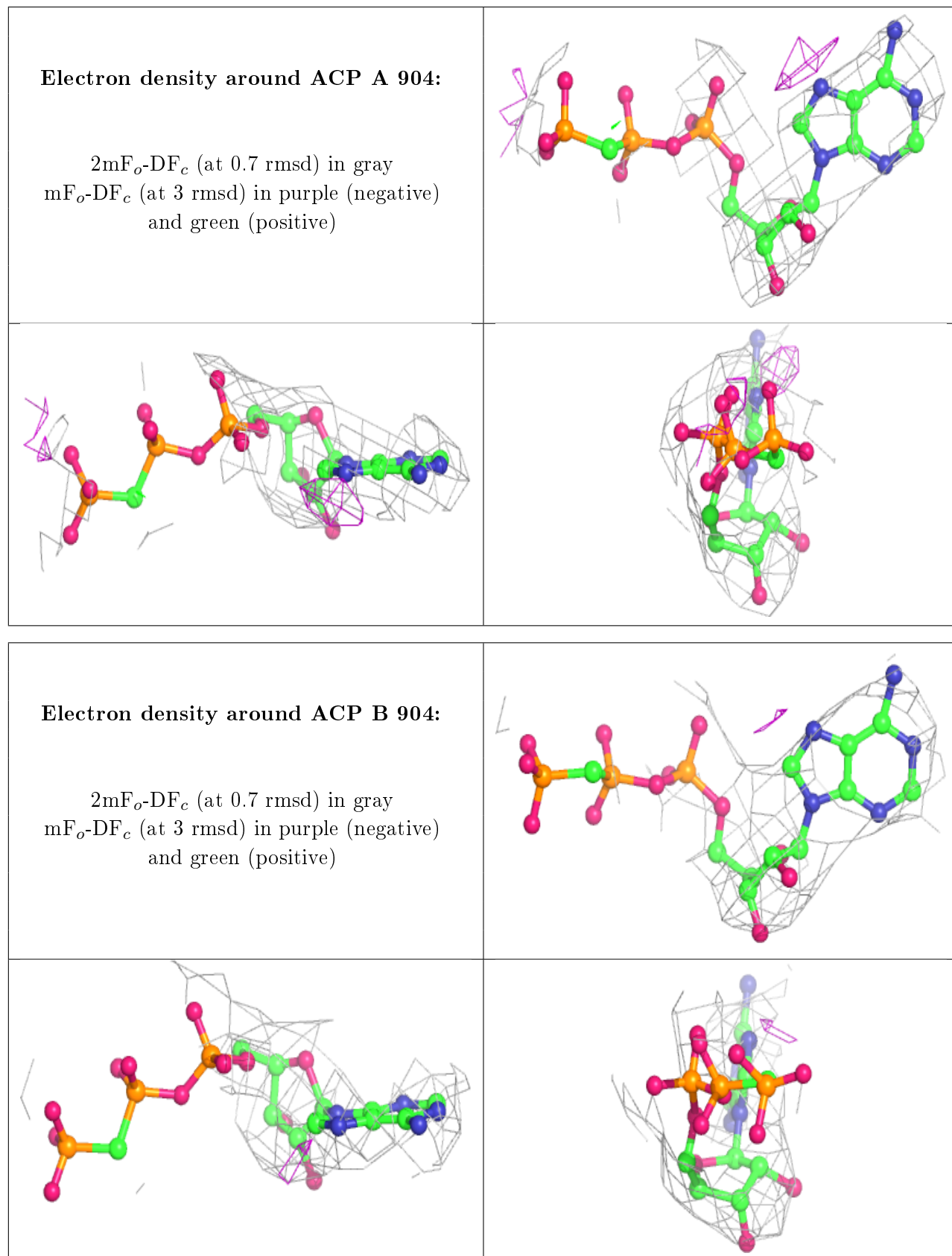
Unable to reproduce the depositors R factor - this section is therefore empty.

### 6.4 Ligands

Unable to reproduce the depositors R factor - this section is therefore empty.

The following is a graphical depiction of the model fit to experimental electron density of all instances of the Ligand of Interest. In addition, ligands with molecular weight > 250 and outliers as shown on the geometry validation Tables will also be included. Each fit is shown from different orientation to approximate a three-dimensional view.





## 6.5 Other polymers

Unable to reproduce the depositors R factor - this section is therefore empty.