



# Full wwPDB X-ray Structure Validation Report ⓘ

Sep 20, 2023 – 09:29 AM EDT

PDB ID : 5KIR  
Title : The Structure of Vioxx Bound to Human COX-2  
Authors : Orlando, B.J.; Malkowski, M.G.  
Deposited on : 2016-06-16  
Resolution : 2.70 Å(reported)

This is a Full wwPDB X-ray Structure Validation Report for a publicly released PDB entry.

We welcome your comments at [validation@mail.wwpdb.org](mailto:validation@mail.wwpdb.org)

A user guide is available at

<https://www.wwpdb.org/validation/2017/XrayValidationReportHelp>

with specific help available everywhere you see the ⓘ symbol.

The types of validation reports are described at

<http://www.wwpdb.org/validation/2017/FAQs#types>.

---

The following versions of software and data (see [references ⓘ](#)) were used in the production of this report:

MolProbity : 4.02b-467  
Mogul : 1.8.5 (274361), CSD as541be (2020)  
Xtriage (Phenix) : 1.13  
EDS : 2.35.1  
buster-report : 1.1.7 (2018)  
Percentile statistics : 20191225.v01 (using entries in the PDB archive December 25th 2019)  
Refmac : 5.8.0158  
CCP4 : 7.0.044 (Gargrove)  
Ideal geometry (proteins) : Engh & Huber (2001)  
Ideal geometry (DNA, RNA) : Parkinson et al. (1996)  
Validation Pipeline (wwPDB-VP) : 2.35.1

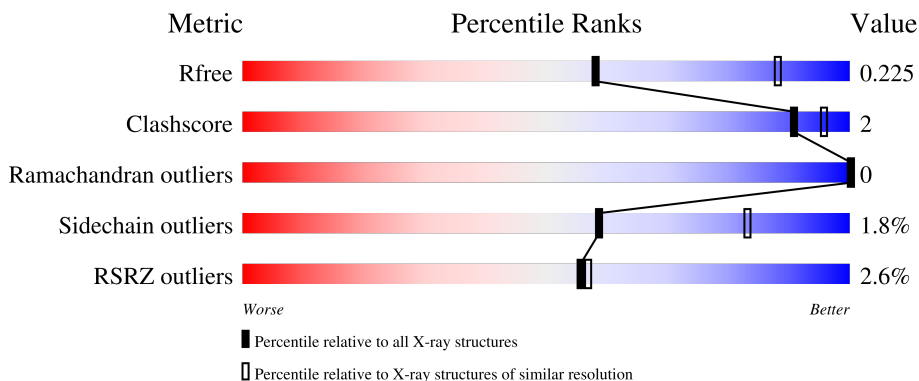
# 1 Overall quality at a glance

The following experimental techniques were used to determine the structure:

*X-RAY DIFFRACTION*

The reported resolution of this entry is 2.70 Å.

Percentile scores (ranging between 0-100) for global validation metrics of the entry are shown in the following graphic. The table shows the number of entries on which the scores are based.



Metric	Whole archive (#Entries)	Similar resolution (#Entries, resolution range(Å))
$R_{free}$	130704	2808 (2.70-2.70)
Clashscore	141614	3122 (2.70-2.70)
Ramachandran outliers	138981	3069 (2.70-2.70)
Sidechain outliers	138945	3069 (2.70-2.70)
RSRZ outliers	127900	2737 (2.70-2.70)

The table below summarises the geometric issues observed across the polymeric chains and their fit to the electron density. The red, orange, yellow and green segments of the lower bar indicate the fraction of residues that contain outliers for  $\geq 3$ , 2, 1 and 0 types of geometric quality criteria respectively. A grey segment represents the fraction of residues that are not modelled. The numeric value for each fraction is indicated below the corresponding segment, with a dot representing fractions  $\leq 5\%$ . The upper red bar (where present) indicates the fraction of residues that have poor fit to the electron density. The numeric value is given above the bar.

Mol	Chain	Length	Quality of chain
1	A	551	 2% 95% 5%
1	B	551	 3% 93% 6%
2	C	3	 67% 33%
2	D	3	 67% 33%

## 2 Entry composition [i](#)

There are 9 unique types of molecules in this entry. The entry contains 18167 atoms, of which 8823 are hydrogens and 0 are deuteriums.

In the tables below, the ZeroOcc column contains the number of atoms modelled with zero occupancy, the AltConf column contains the number of residues with at least one atom in alternate conformation and the Trace column contains the number of residues modelled with at most 2 atoms.

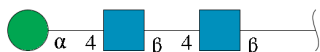
- Molecule 1 is a protein called Prostaglandin G/H synthase 2.

Mol	Chain	Residues	Atoms					ZeroOcc	AltConf	Trace	
			Total	C	H	N	O				S
1	A	551	8795	2877	4333	753	806	26	0	0	0
1	B	551	8764	2871	4310	751	806	26	0	0	0

There are 2 discrepancies between the modelled and reference sequences:

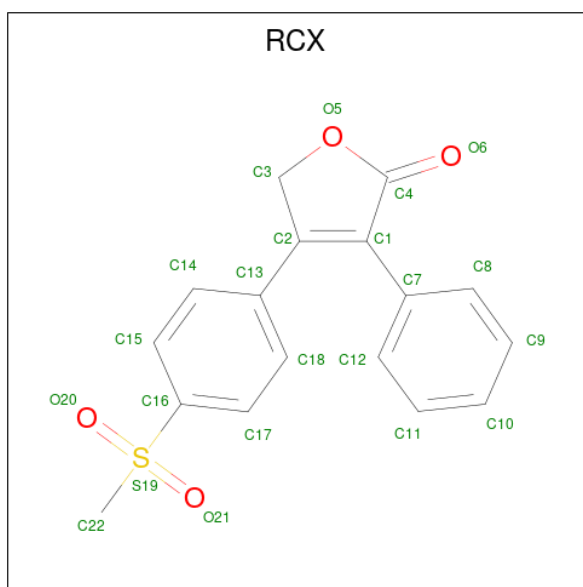
Chain	Residue	Modelled	Actual	Comment	Reference
A	350	ASN	GLN	conflict	UNP P35354
B	350	ASN	GLN	conflict	UNP P35354

- Molecule 2 is an oligosaccharide called alpha-D-mannopyranose-(1-4)-2-acetamido-2-deoxy-beta-D-glucopyranose-(1-4)-2-acetamido-2-deoxy-beta-D-glucopyranose.



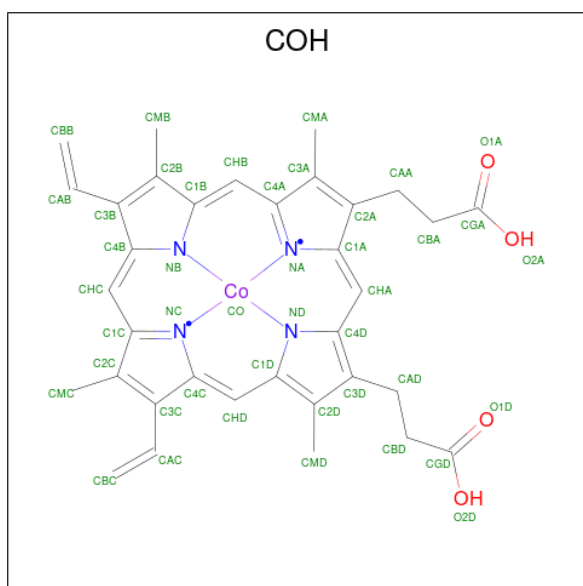
Mol	Chain	Residues	Atoms					ZeroOcc	AltConf	Trace
			Total	C	H	N	O			
2	C	3	77	22	38	2	15	0	0	0
2	D	3	77	22	38	2	15	0	0	0

- Molecule 3 is Rofecoxib (three-letter code: RCX) (formula: C<sub>17</sub>H<sub>14</sub>O<sub>4</sub>S).



Mol	Chain	Residues	Atoms				ZeroOcc	AltConf	
			Total	C	O	S			
3	A	1	Total	22	17	4	1	0	0
3	B	1	Total	22	17	4	1	0	0

- Molecule 4 is PROTOPORPHYRIN IX CONTAINING CO (three-letter code: COH) (formula:  $C_{34}H_{32}CoN_4O_4$ ).



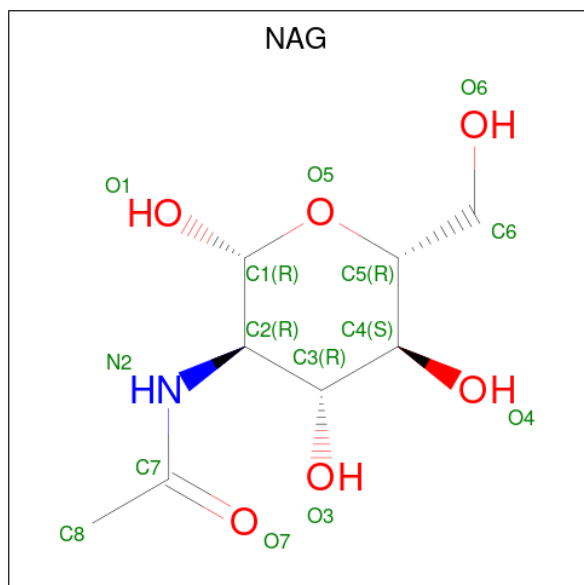
Mol	Chain	Residues	Atoms						ZeroOcc	AltConf	
			Total	C	Co	H	N	O			
4	A	1	Total	73	34	1	30	4	4	0	0

*Continued on next page...*

Continued from previous page...

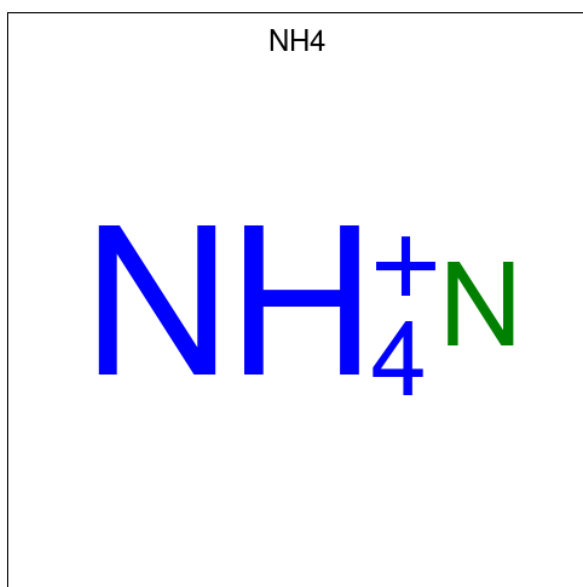
Mol	Chain	Residues	Atoms					ZeroOcc	AltConf	
			Total	C	Co	H	N			O
4	B	1	73	34	1	30	4	4	0	0

- Molecule 5 is 2-acetamido-2-deoxy-beta-D-glucopyranose (three-letter code: NAG) (formula:  $C_8H_{15}NO_6$ ).



Mol	Chain	Residues	Atoms					ZeroOcc	AltConf
			Total	C	H	N	O		
5	A	1	28	8	14	1	5	0	0
5	B	1	28	8	14	1	5	0	0

- Molecule 6 is AMMONIUM ION (three-letter code: NH4) (formula:  $H_4N$ ).



Mol	Chain	Residues	Atoms			ZeroOcc	AltConf
6	A	1	Total	H	N	0	0
			5	4	1		
6	B	1	Total	H	N	0	0
			5	4	1		

- Molecule 7 is GLYCEROL (three-letter code: GOL) (formula:  $C_3H_8O_3$ ).



Mol	Chain	Residues	Atoms				ZeroOcc	AltConf
7	A	1	Total	C	H	O	0	0
			14	3	8	3		

- Molecule 8 is PHOSPHATE ION (three-letter code: PO4) (formula:  $O_4P$ ).



Mol	Chain	Residues	Atoms			ZeroOcc	AltConf
8	A	1	Total	O	P	0	0
			5	4	1		
8	A	1	Total	O	P	0	0
			5	4	1		
8	A	1	Total	O	P	0	0
			5	4	1		
8	B	1	Total	O	P	0	0
			5	4	1		
8	B	1	Total	O	P	0	0
			5	4	1		
8	B	1	Total	O	P	0	0
			5	4	1		

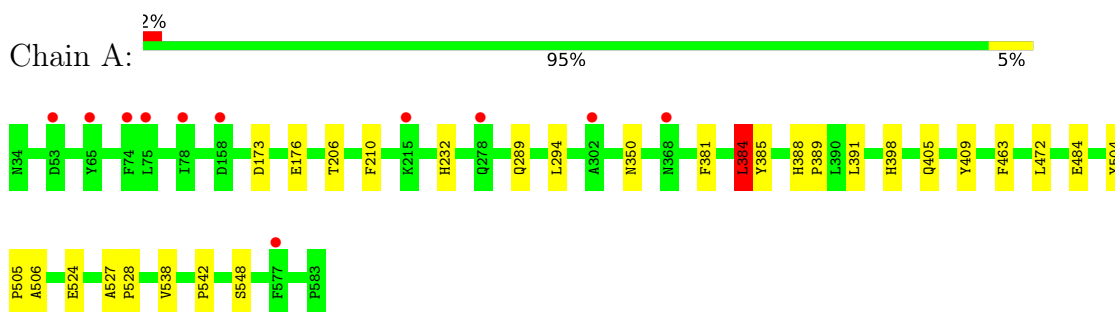
- Molecule 9 is water.

Mol	Chain	Residues	Atoms		ZeroOcc	AltConf
9	A	84	Total	O	0	0
			84	84		
9	B	70	Total	O	0	0
			70	70		

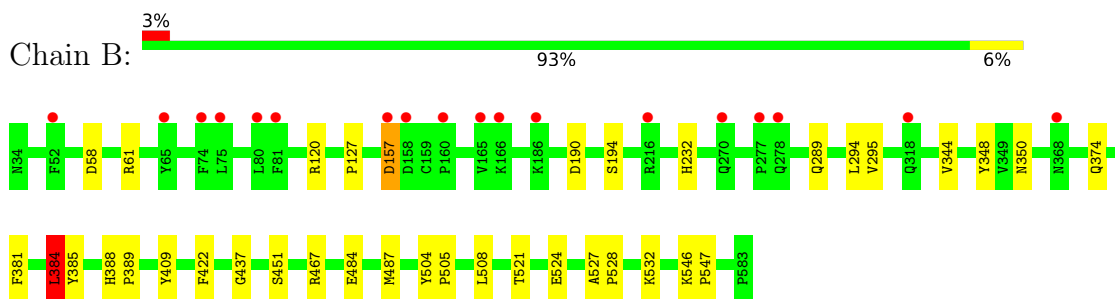
### 3 Residue-property plots [i](#)

These plots are drawn for all protein, RNA, DNA and oligosaccharide chains in the entry. The first graphic for a chain summarises the proportions of the various outlier classes displayed in the second graphic. The second graphic shows the sequence view annotated by issues in geometry and electron density. Residues are color-coded according to the number of geometric quality criteria for which they contain at least one outlier: green = 0, yellow = 1, orange = 2 and red = 3 or more. A red dot above a residue indicates a poor fit to the electron density ( $RSRZ > 2$ ). Stretches of 2 or more consecutive residues without any outlier are shown as a green connector. Residues present in the sample, but not in the model, are shown in grey.

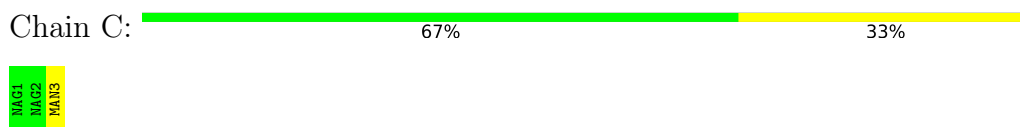
- Molecule 1: Prostaglandin G/H synthase 2



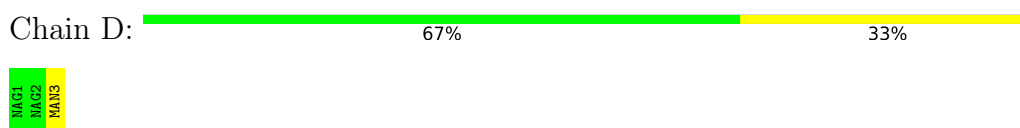
- Molecule 1: Prostaglandin G/H synthase 2



- Molecule 2: alpha-D-mannopyranose-(1-4)-2-acetamido-2-deoxy-beta-D-glucopyranose-(1-4)-2-acetamido-2-deoxy-beta-D-glucopyranose



- Molecule 2: alpha-D-mannopyranose-(1-4)-2-acetamido-2-deoxy-beta-D-glucopyranose-(1-4)-2-acetamido-2-deoxy-beta-D-glucopyranose





## 4 Data and refinement statistics

Property	Value	Source
Space group	I 2 2 2	Depositor
Cell constants a, b, c, $\alpha$ , $\beta$ , $\gamma$	126.99Å 149.42Å 185.06Å 90.00° 90.00° 90.00°	Depositor
Resolution (Å)	30.03 – 2.70 30.03 – 2.70	Depositor EDS
% Data completeness (in resolution range)	93.1 (30.03-2.70) 88.6 (30.03-2.70)	Depositor EDS
$R_{merge}$	(Not available)	Depositor
$R_{sym}$	(Not available)	Depositor
$\langle I/\sigma(I) \rangle$ <sup>1</sup>	4.06 (at 2.68Å)	Xtrriage
Refinement program	PHENIX 1.9_1692	Depositor
R, $R_{free}$	0.178 , 0.220 0.186 , 0.225	Depositor DCC
$R_{free}$ test set	2219 reflections (4.89%)	wwPDB-VP
Wilson B-factor (Å <sup>2</sup> )	40.1	Xtrriage
Anisotropy	0.126	Xtrriage
Bulk solvent $k_{sol}$ (e/Å <sup>3</sup> ), $B_{sol}$ (Å <sup>2</sup> )	0.39 , 42.9	EDS
L-test for twinning <sup>2</sup>	$\langle  L  \rangle = 0.49$ , $\langle L^2 \rangle = 0.32$	Xtrriage
Estimated twinning fraction	No twinning to report.	Xtrriage
$F_o, F_c$ correlation	0.93	EDS
Total number of atoms	18167	wwPDB-VP
Average B, all atoms (Å <sup>2</sup> )	53.0	wwPDB-VP

Xtrriage's analysis on translational NCS is as follows: *The largest off-origin peak in the Patterson function is 3.08% of the height of the origin peak. No significant pseudotranslation is detected.*

<sup>1</sup>Intensities estimated from amplitudes.

<sup>2</sup>Theoretical values of  $\langle |L| \rangle$ ,  $\langle L^2 \rangle$  for acentric reflections are 0.5, 0.333 respectively for untwinned datasets, and 0.375, 0.2 for perfectly twinned datasets.

## 5 Model quality [i](#)

### 5.1 Standard geometry [i](#)

Bond lengths and bond angles in the following residue types are not validated in this section: GOL, RCX, NAG, PO4, NH4, MAN, COH

The Z score for a bond length (or angle) is the number of standard deviations the observed value is removed from the expected value. A bond length (or angle) with  $|Z| > 5$  is considered an outlier worth inspection. RMSZ is the root-mean-square of all Z scores of the bond lengths (or angles).

Mol	Chain	Bond lengths		Bond angles	
		RMSZ	# Z  >5	RMSZ	# Z  >5
1	A	0.24	0/4594	0.41	1/6233 (0.0%)
1	B	0.24	0/4586	0.41	1/6225 (0.0%)
All	All	0.24	0/9180	0.41	2/12458 (0.0%)

There are no bond length outliers.

All (2) bond angle outliers are listed below:

Mol	Chain	Res	Type	Atoms	Z	Observed(°)	Ideal(°)
1	A	384	LEU	CA-CB-CG	6.41	130.04	115.30
1	B	384	LEU	CA-CB-CG	6.30	129.79	115.30

There are no chirality outliers.

There are no planarity outliers.

### 5.2 Too-close contacts [i](#)

In the following table, the Non-H and H(model) columns list the number of non-hydrogen atoms and hydrogen atoms in the chain respectively. The H(added) column lists the number of hydrogen atoms added and optimized by MolProbity. The Clashes column lists the number of clashes within the asymmetric unit, whereas Symm-Clashes lists symmetry-related clashes.

Mol	Chain	Non-H	H(model)	H(added)	Clashes	Symm-Clashes
1	A	4462	4333	4332	13	0
1	B	4454	4310	4309	18	0
2	C	39	38	34	0	0
2	D	39	38	34	0	0
3	A	22	0	0	0	0
3	B	22	0	0	0	0
4	A	43	30	30	2	0

*Continued on next page...*

*Continued from previous page...*

Mol	Chain	Non-H	H(model)	H(added)	Clashes	Symm-Clashes
4	B	43	30	30	2	0
5	A	14	14	12	0	0
5	B	14	14	13	0	0
6	A	1	4	0	0	0
6	B	1	4	0	0	0
7	A	6	8	8	0	0
8	A	15	0	0	0	0
8	B	15	0	0	0	0
9	A	84	0	0	0	0
9	B	70	0	0	0	0
All	All	9344	8823	8802	30	0

The all-atom clashscore is defined as the number of clashes found per 1000 atoms (including hydrogen atoms). The all-atom clashscore for this structure is 2.

All (30) close contacts within the same asymmetric unit are listed below, sorted by their clash magnitude.

Atom-1	Atom-2	Interatomic distance (Å)	Clash overlap (Å)
1:B:374:GLN:O	1:B:532:LYS:NZ	2.29	0.65
1:A:391:LEU:HD21	4:A:602:COH:HHC	1.88	0.54
1:B:437:GLY:N	1:B:508:LEU:O	2.44	0.50
1:A:173:ASP:HB3	1:A:176:GLU:HB2	1.93	0.50
1:B:294:LEU:HG	1:B:295:VAL:HG13	1.93	0.49
4:A:602:COH:HHD	4:A:602:COH:HBC1	1.95	0.49
1:B:381:PHE:HA	1:B:384:LEU:HD13	1.95	0.48
1:A:388:HIS:N	1:A:389:PRO:CD	2.77	0.47
1:B:388:HIS:N	1:B:389:PRO:CD	2.78	0.47
1:B:388:HIS:CD2	4:B:602:COH:NC	2.82	0.47
4:B:602:COH:HHD	4:B:602:COH:HBC1	1.96	0.47
1:A:504:TYR:HB3	1:A:505:PRO:HD3	1.98	0.46
1:B:467:ARG:NH2	1:B:521:THR:OG1	2.49	0.45
1:A:381:PHE:HA	1:A:384:LEU:HD13	1.99	0.45
1:B:120:ARG:NH2	1:B:524:GLU:OE1	2.51	0.43
1:B:504:TYR:HB3	1:B:505:PRO:HD3	2.00	0.43
1:A:463:PHE:CD1	1:A:506:ALA:HB3	2.54	0.43
1:A:542:PRO:O	1:B:61:ARG:NH1	2.48	0.42
1:A:548:SER:HB3	1:B:58:ASP:HB2	2.01	0.42
1:A:527:ALA:HB3	1:A:528:PRO:HD3	2.02	0.42
1:B:546:LYS:HB2	1:B:547:PRO:HD2	2.01	0.42
1:A:206:THR:HB	1:A:210:PHE:CD2	2.55	0.42
1:A:294:LEU:HA	1:A:409:TYR:CE1	2.56	0.41

*Continued on next page...*

Continued from previous page...

Atom-1	Atom-2	Interatomic distance (Å)	Clash overlap (Å)
1:A:472:LEU:HD11	1:A:524:GLU:HB2	2.02	0.41
1:B:527:ALA:HB3	1:B:528:PRO:HD3	2.01	0.41
1:B:157:ASP:N	1:B:157:ASP:OD1	2.54	0.41
1:B:344:VAL:HA	1:B:348:TYR:HB3	2.01	0.41
1:B:294:LEU:HA	1:B:409:TYR:CE1	2.55	0.41
1:A:538:VAL:HG23	1:B:127:PRO:HG2	2.03	0.41
1:B:190:ASP:OD2	1:B:194:SER:OG	2.30	0.40

There are no symmetry-related clashes.

## 5.3 Torsion angles [i](#)

### 5.3.1 Protein backbone [i](#)

In the following table, the Percentiles column shows the percent Ramachandran outliers of the chain as a percentile score with respect to all X-ray entries followed by that with respect to entries of similar resolution.

The Analysed column shows the number of residues for which the backbone conformation was analysed, and the total number of residues.

Mol	Chain	Analysed	Favoured	Allowed	Outliers	Percentiles	
1	A	549/551 (100%)	532 (97%)	17 (3%)	0	100	100
1	B	549/551 (100%)	529 (96%)	20 (4%)	0	100	100
All	All	1098/1102 (100%)	1061 (97%)	37 (3%)	0	100	100

There are no Ramachandran outliers to report.

### 5.3.2 Protein sidechains [i](#)

In the following table, the Percentiles column shows the percent sidechain outliers of the chain as a percentile score with respect to all X-ray entries followed by that with respect to entries of similar resolution.

The Analysed column shows the number of residues for which the sidechain conformation was analysed, and the total number of residues.

Mol	Chain	Analysed	Rotameric	Outliers	Percentiles	
1	A	488/490 (100%)	480 (98%)	8 (2%)	62	85

Continued on next page...

*Continued from previous page...*

Mol	Chain	Analysed	Rotameric	Outliers	Percentiles	
1	B	486/490 (99%)	476 (98%)	10 (2%)	53	80
All	All	974/980 (99%)	956 (98%)	18 (2%)	59	83

All (18) residues with a non-rotameric sidechain are listed below:

Mol	Chain	Res	Type
1	A	232	HIS
1	A	289	GLN
1	A	350	ASN
1	A	384	LEU
1	A	385	TYR
1	A	398	HIS
1	A	405	GLN
1	A	484	GLU
1	B	157	ASP
1	B	232	HIS
1	B	289	GLN
1	B	350	ASN
1	B	384	LEU
1	B	385	TYR
1	B	422	PHE
1	B	451	SER
1	B	484	GLU
1	B	487	MET

Sometimes sidechains can be flipped to improve hydrogen bonding and reduce clashes. All (1) such sidechains are listed below:

Mol	Chain	Res	Type
1	A	449	GLN

### 5.3.3 RNA [i](#)

There are no RNA molecules in this entry.

## 5.4 Non-standard residues in protein, DNA, RNA chains [i](#)

There are no non-standard protein/DNA/RNA residues in this entry.

## 5.5 Carbohydrates i

6 monosaccharides are modelled in this entry.

In the following table, the Counts columns list the number of bonds (or angles) for which Mogul statistics could be retrieved, the number of bonds (or angles) that are observed in the model and the number of bonds (or angles) that are defined in the Chemical Component Dictionary. The Link column lists molecule types, if any, to which the group is linked. The Z score for a bond length (or angle) is the number of standard deviations the observed value is removed from the expected value. A bond length (or angle) with  $|Z| > 2$  is considered an outlier worth inspection. RMSZ is the root-mean-square of all Z scores of the bond lengths (or angles).

Mol	Type	Chain	Res	Link	Bond lengths			Bond angles		
					Counts	RMSZ	# Z  > 2	Counts	RMSZ	# Z  > 2
2	NAG	C	1	2,1	14,14,15	0.36	0	17,19,21	0.39	0
2	NAG	C	2	2	14,14,15	0.35	0	17,19,21	0.40	0
2	MAN	C	3	2	11,11,12	1.00	1 (9%)	15,15,17	1.84	1 (6%)
2	NAG	D	1	2,1	14,14,15	0.23	0	17,19,21	0.46	0
2	NAG	D	2	2	14,14,15	0.14	0	17,19,21	0.65	0
2	MAN	D	3	2	11,11,12	0.55	0	15,15,17	1.28	1 (6%)

In the following table, the Chirals column lists the number of chiral outliers, the number of chiral centers analysed, the number of these observed in the model and the number defined in the Chemical Component Dictionary. Similar counts are reported in the Torsion and Rings columns. '-' means no outliers of that kind were identified.

Mol	Type	Chain	Res	Link	Chirals	Torsions	Rings
2	NAG	C	1	2,1	-	0/6/23/26	0/1/1/1
2	NAG	C	2	2	-	2/6/23/26	0/1/1/1
2	MAN	C	3	2	-	1/2/19/22	0/1/1/1
2	NAG	D	1	2,1	-	0/6/23/26	0/1/1/1
2	NAG	D	2	2	-	2/6/23/26	0/1/1/1
2	MAN	D	3	2	-	1/2/19/22	0/1/1/1

All (1) bond length outliers are listed below:

Mol	Chain	Res	Type	Atoms	Z	Observed(Å)	Ideal(Å)
2	C	3	MAN	O5-C5	2.90	1.49	1.43

All (2) bond angle outliers are listed below:

Mol	Chain	Res	Type	Atoms	Z	Observed(°)	Ideal(°)
2	C	3	MAN	C1-O5-C5	6.12	120.48	112.19
2	D	3	MAN	C1-O5-C5	4.10	117.75	112.19

There are no chirality outliers.

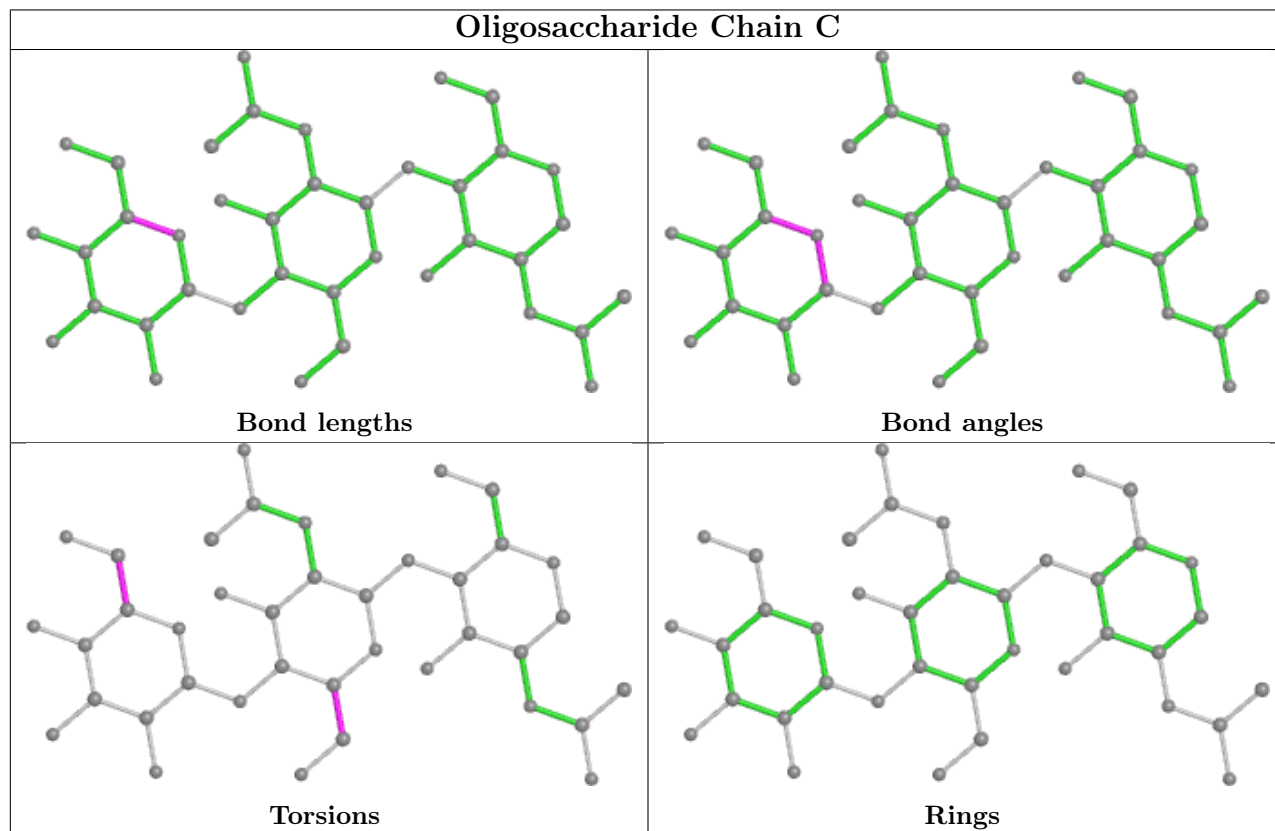
All (6) torsion outliers are listed below:

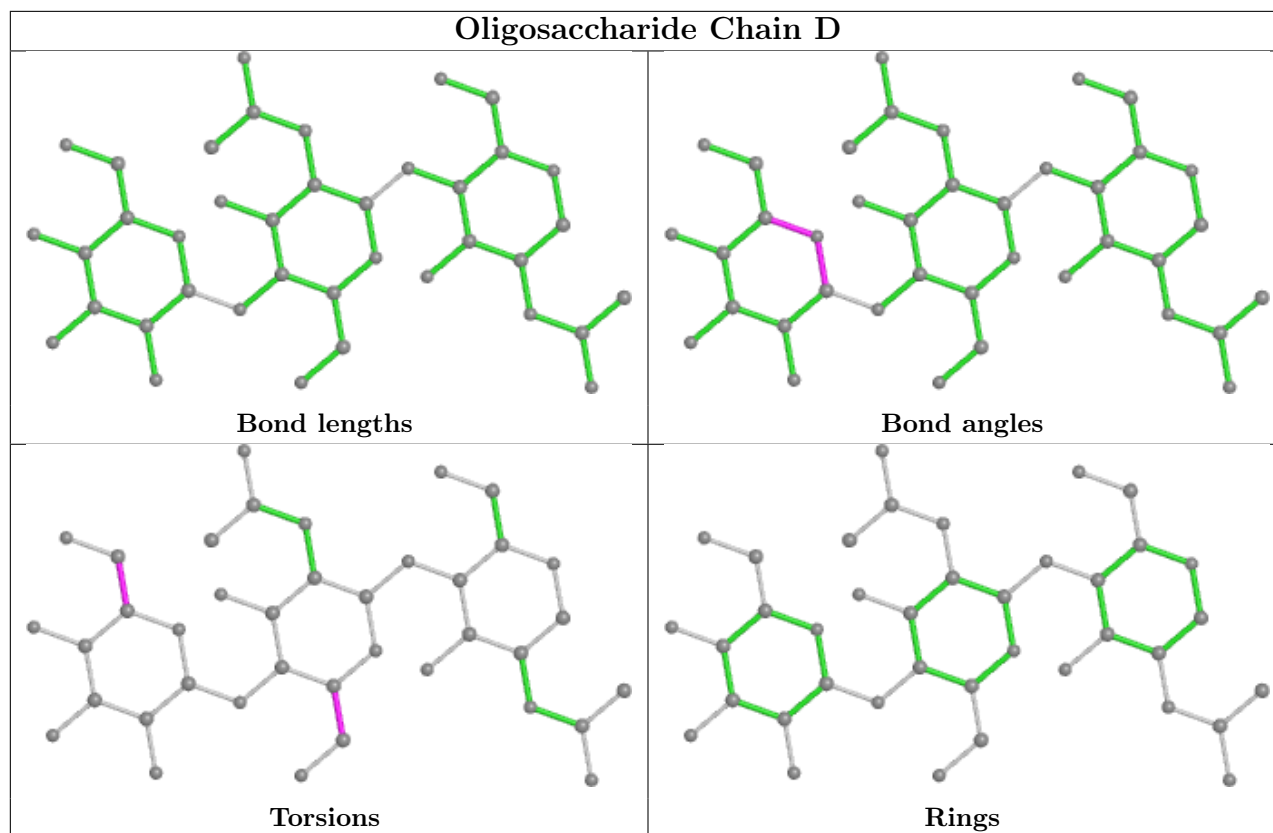
Mol	Chain	Res	Type	Atoms
2	C	3	MAN	O5-C5-C6-O6
2	C	2	NAG	O5-C5-C6-O6
2	C	2	NAG	C4-C5-C6-O6
2	D	2	NAG	C4-C5-C6-O6
2	D	3	MAN	O5-C5-C6-O6
2	D	2	NAG	O5-C5-C6-O6

There are no ring outliers.

No monomer is involved in short contacts.

The following is a two-dimensional graphical depiction of Mogul quality analysis of bond lengths, bond angles, torsion angles, and ring geometry for oligosaccharide.





## 5.6 Ligand geometry [i](#)

Of 15 ligands modelled in this entry, 2 are modelled with single atom - leaving 13 for Mogul analysis.

In the following table, the Counts columns list the number of bonds (or angles) for which Mogul statistics could be retrieved, the number of bonds (or angles) that are observed in the model and the number of bonds (or angles) that are defined in the Chemical Component Dictionary. The Link column lists molecule types, if any, to which the group is linked. The Z score for a bond length (or angle) is the number of standard deviations the observed value is removed from the expected value. A bond length (or angle) with  $|Z| > 2$  is considered an outlier worth inspection. RMSZ is the root-mean-square of all Z scores of the bond lengths (or angles).

Mol	Type	Chain	Res	Link	Bond lengths			Bond angles		
					Counts	RMSZ	$\# Z  > 2$	Counts	RMSZ	$\# Z  > 2$
8	PO4	A	610	-	4,4,4	0.92	0	6,6,6	0.43	0
4	COH	B	602	1	40,50,50	<b>3.86</b>	<b>15 (37%)</b>	38,82,82	<b>2.52</b>	<b>12 (31%)</b>
5	NAG	B	606	1	14,14,15	0.21	0	17,19,21	0.45	0
4	COH	A	602	1	40,50,50	<b>3.80</b>	<b>16 (40%)</b>	38,82,82	<b>2.69</b>	<b>11 (28%)</b>
7	GOL	A	608	-	5,5,5	0.37	0	5,5,5	0.39	0
8	PO4	A	609	-	4,4,4	0.92	0	6,6,6	0.41	0
8	PO4	B	610	-	4,4,4	0.91	0	6,6,6	0.41	0
8	PO4	A	611	-	4,4,4	0.91	0	6,6,6	0.44	0



Mol	Type	Chain	Res	Link	Bond lengths			Bond angles		
					Counts	RMSZ	# Z  > 2	Counts	RMSZ	# Z  > 2
8	PO4	B	609	-	4,4,4	0.92	0	6,6,6	0.41	0
3	RCX	B	601	-	24,24,24	3.20	8 (33%)	32,35,35	2.00	7 (21%)
3	RCX	A	601	-	24,24,24	3.21	8 (33%)	32,35,35	2.05	8 (25%)
5	NAG	A	606	1	14,14,15	0.15	0	17,19,21	0.47	0
8	PO4	B	608	-	4,4,4	0.90	0	6,6,6	0.48	0

In the following table, the Chirals column lists the number of chiral outliers, the number of chiral centers analysed, the number of these observed in the model and the number defined in the Chemical Component Dictionary. Similar counts are reported in the Torsion and Rings columns. '-' means no outliers of that kind were identified.

Mol	Type	Chain	Res	Link	Chirals	Torsions	Rings
4	COH	B	602	1	-	4/12/94/94	-
5	NAG	B	606	1	-	0/6/23/26	0/1/1/1
4	COH	A	602	1	-	2/12/94/94	-
7	GOL	A	608	-	-	1/4/4/4	-
3	RCX	B	601	-	-	4/14/27/27	0/3/3/3
3	RCX	A	601	-	-	4/14/27/27	0/3/3/3
5	NAG	A	606	1	-	0/6/23/26	0/1/1/1

All (47) bond length outliers are listed below:

Mol	Chain	Res	Type	Atoms	Z	Observed(Å)	Ideal(Å)
4	B	602	COH	C4C-NC	10.77	1.49	1.36
4	A	602	COH	C4C-NC	10.67	1.49	1.36
4	A	602	COH	C4A-NA	9.60	1.48	1.36
4	A	602	COH	C1A-NA	9.40	1.48	1.36
4	B	602	COH	C1A-NA	9.36	1.47	1.36
4	B	602	COH	C4A-NA	9.27	1.47	1.36
4	B	602	COH	C1C-NC	9.18	1.47	1.36
3	A	601	RCX	O6-C4	9.10	1.40	1.21
3	B	601	RCX	O6-C4	9.09	1.40	1.21
4	A	602	COH	C1C-NC	8.67	1.47	1.36
3	B	601	RCX	C3-C2	-7.09	1.40	1.51
3	A	601	RCX	C3-C2	-7.04	1.40	1.51
3	A	601	RCX	O5-C3	-6.64	1.32	1.44
3	B	601	RCX	O5-C3	-6.51	1.32	1.44
4	B	602	COH	C2A-C3A	5.67	1.48	1.36
4	A	602	COH	C3B-C2B	5.51	1.48	1.40
4	B	602	COH	C3C-C2C	5.40	1.48	1.37
4	A	602	COH	C3C-C2C	5.38	1.48	1.37

Continued on next page...

*Continued from previous page...*

Mol	Chain	Res	Type	Atoms	Z	Observed(Å)	Ideal(Å)
4	B	602	COH	C3B-C2B	5.37	1.47	1.40
3	B	601	RCX	C1-C2	5.18	1.44	1.36
4	A	602	COH	C2A-C3A	5.15	1.47	1.36
3	A	601	RCX	C1-C2	5.14	1.44	1.36
4	B	602	COH	CHD-C4C	4.62	1.45	1.37
4	A	602	COH	CHD-C4C	4.37	1.45	1.37
4	B	602	COH	CHC-C1C	4.17	1.44	1.37
4	B	602	COH	C3B-C4B	3.96	1.50	1.40
4	B	602	COH	C3D-C2D	3.87	1.49	1.37
4	A	602	COH	C3B-C4B	3.85	1.50	1.40
4	A	602	COH	CHA-C1A	3.84	1.44	1.37
4	A	602	COH	CHC-C1C	3.82	1.44	1.37
4	B	602	COH	CHA-C1A	3.79	1.44	1.37
4	A	602	COH	C3D-C2D	3.65	1.48	1.37
3	A	601	RCX	C7-C1	3.30	1.55	1.49
4	B	602	COH	CHB-C4A	3.29	1.43	1.37
4	A	602	COH	CHB-C4A	3.18	1.43	1.37
3	B	601	RCX	C7-C1	3.12	1.55	1.49
4	B	602	COH	C4C-C3C	3.10	1.50	1.45
4	A	602	COH	C4C-C3C	2.99	1.50	1.45
3	B	601	RCX	O21-S19	2.94	1.52	1.44
3	A	601	RCX	O21-S19	2.93	1.52	1.44
3	B	601	RCX	C1-C4	-2.86	1.40	1.48
3	A	601	RCX	C1-C4	-2.72	1.41	1.48
3	A	601	RCX	O20-S19	2.64	1.51	1.44
3	B	601	RCX	O20-S19	2.57	1.51	1.44
4	B	602	COH	CHC-C4B	2.43	1.45	1.40
4	A	602	COH	CHC-C4B	2.31	1.45	1.40
4	A	602	COH	CHB-C1B	2.05	1.44	1.40

All (38) bond angle outliers are listed below:

Mol	Chain	Res	Type	Atoms	Z	Observed(°)	Ideal(°)
4	A	602	COH	CHB-C4A-NA	9.60	126.70	121.29
4	B	602	COH	CHB-C4A-NA	7.86	125.72	121.29
4	B	602	COH	CHC-C1C-NC	6.95	125.20	121.29
4	A	602	COH	CHC-C1C-NC	6.83	125.14	121.29
3	B	601	RCX	O5-C3-C2	5.87	109.39	104.78
3	A	601	RCX	O5-C3-C2	5.78	109.32	104.78
4	A	602	COH	CBD-CAD-C3D	-5.71	102.97	112.60
4	B	602	COH	CBD-CAD-C3D	-5.05	104.09	112.60
3	A	601	RCX	C22-S19-C16	4.95	110.43	104.58

*Continued on next page...*

*Continued from previous page...*

Mol	Chain	Res	Type	Atoms	Z	Observed(°)	Ideal(°)
3	B	601	RCX	O21-S19-O20	-4.61	109.97	117.92
3	B	601	RCX	C22-S19-C16	4.60	110.01	104.58
3	A	601	RCX	O21-S19-O20	-4.52	110.13	117.92
4	A	602	COH	CHA-C1A-NA	4.44	123.79	121.29
4	B	602	COH	C4A-C3A-C2A	-4.36	104.99	108.61
4	A	602	COH	C4A-C3A-C2A	-4.04	105.25	108.61
4	A	602	COH	CHD-C1D-ND	3.62	125.06	122.40
4	B	602	COH	CHB-C1B-NB	3.59	125.03	122.40
3	B	601	RCX	O5-C4-O6	3.53	125.53	121.07
4	B	602	COH	CHA-C1A-NA	3.29	123.14	121.29
4	A	602	COH	CHA-C4D-ND	3.15	124.71	122.40
4	B	602	COH	CHA-C4D-ND	3.09	124.67	122.40
4	B	602	COH	CHD-C1D-ND	2.97	124.58	122.40
3	A	601	RCX	C18-C13-C2	-2.97	117.20	121.01
3	A	601	RCX	O5-C4-O6	2.96	124.81	121.07
3	B	601	RCX	C3-C2-C13	2.95	124.90	119.94
3	A	601	RCX	C3-C2-C13	2.76	124.58	119.94
4	A	602	COH	CHB-C1B-NB	2.75	124.42	122.40
3	B	601	RCX	O6-C4-C1	-2.65	125.04	130.74
4	B	602	COH	C1A-C2A-C3A	-2.57	103.63	113.64
4	B	602	COH	CAC-C3C-C2C	-2.55	120.22	128.60
4	A	602	COH	CAC-C3C-C2C	-2.49	120.41	128.60
4	B	602	COH	CMB-C2B-C3B	2.46	129.28	124.68
3	A	601	RCX	O6-C4-C1	-2.40	125.56	130.74
4	A	602	COH	C1A-C2A-C3A	-2.28	104.74	113.64
4	A	602	COH	CMB-C2B-C3B	2.27	128.92	124.68
3	A	601	RCX	C15-C16-S19	2.17	121.59	119.58
3	B	601	RCX	C18-C13-C2	-2.14	118.26	121.01
4	B	602	COH	CMA-C3A-C2A	2.04	131.64	126.12

There are no chirality outliers.

All (15) torsion outliers are listed below:

Mol	Chain	Res	Type	Atoms
4	B	602	COH	C1A-C2A-CAA-CBA
4	B	602	COH	C3A-C2A-CAA-CBA
4	B	602	COH	C2A-CAA-CBA-CGA
4	A	602	COH	C2A-CAA-CBA-CGA
3	A	601	RCX	C15-C16-S19-O20
3	A	601	RCX	C17-C16-S19-O20
3	B	601	RCX	C15-C16-S19-O20
3	B	601	RCX	C17-C16-S19-O20

*Continued on next page...*

*Continued from previous page...*

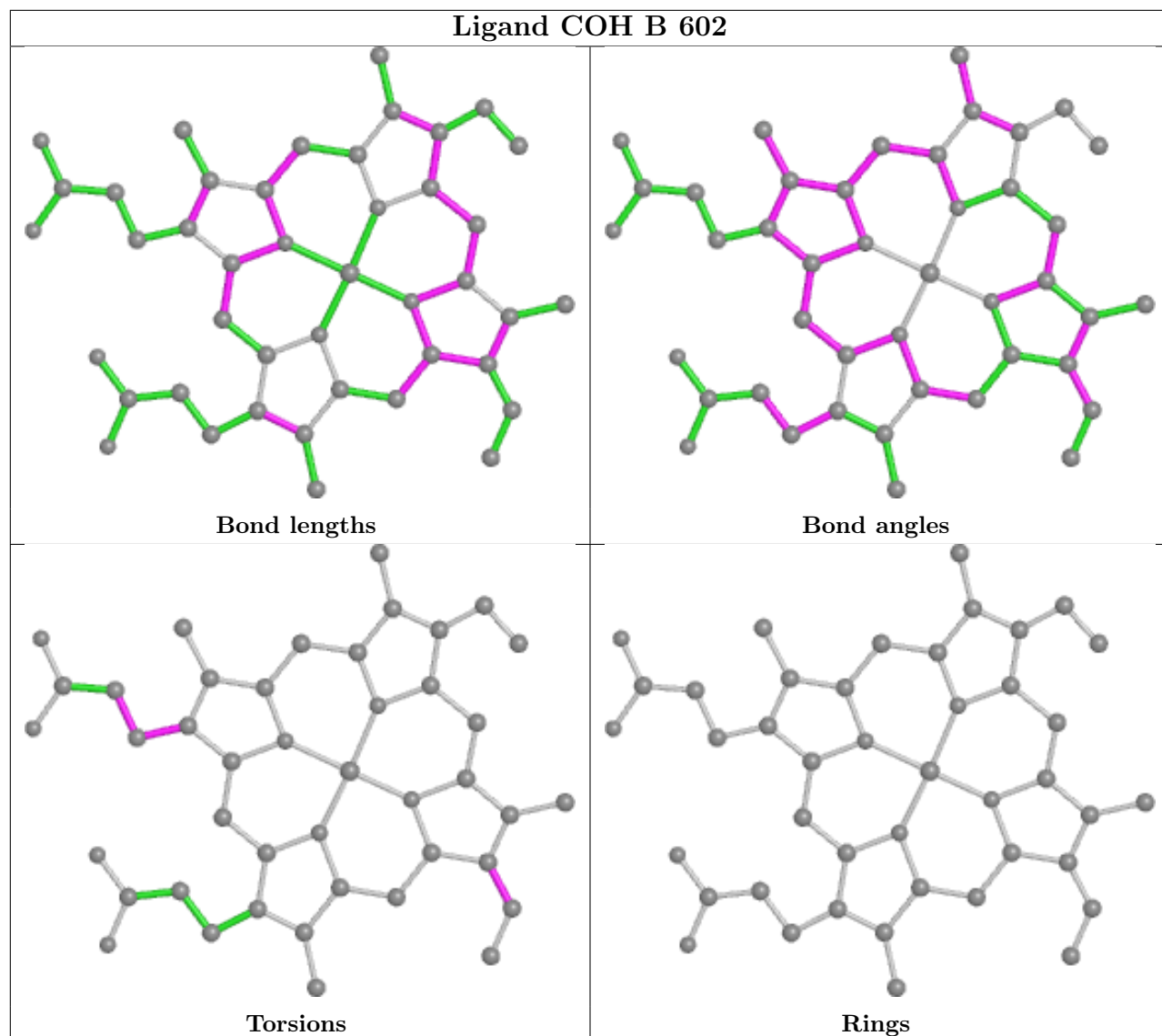
Mol	Chain	Res	Type	Atoms
3	A	601	RCX	C15-C16-S19-C22
3	B	601	RCX	C15-C16-S19-C22
3	A	601	RCX	C17-C16-S19-C22
3	B	601	RCX	C17-C16-S19-C22
4	A	602	COH	C4C-C3C-CAC-CBC
4	B	602	COH	C4C-C3C-CAC-CBC
7	A	608	GOL	O2-C2-C3-O3

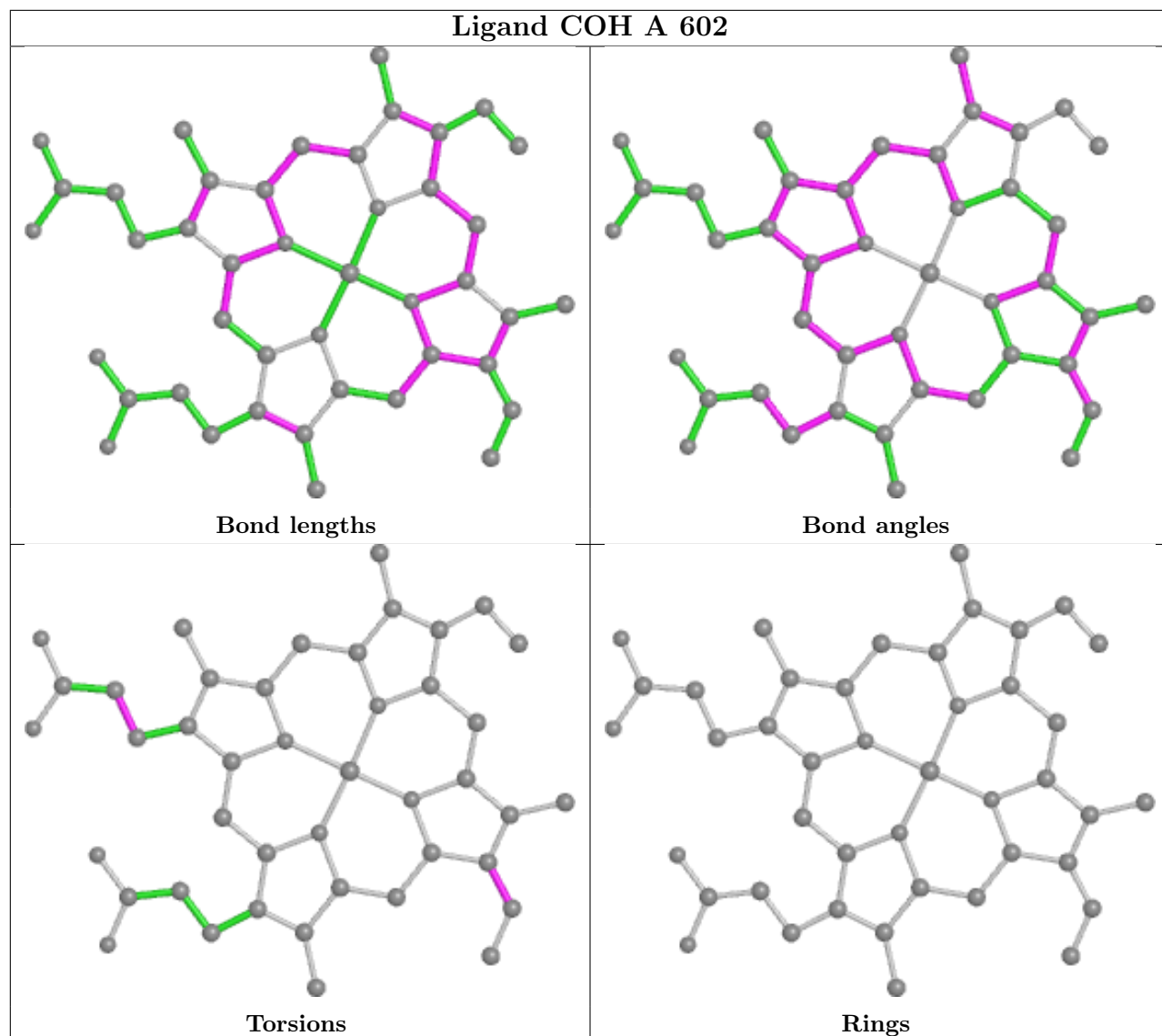
There are no ring outliers.

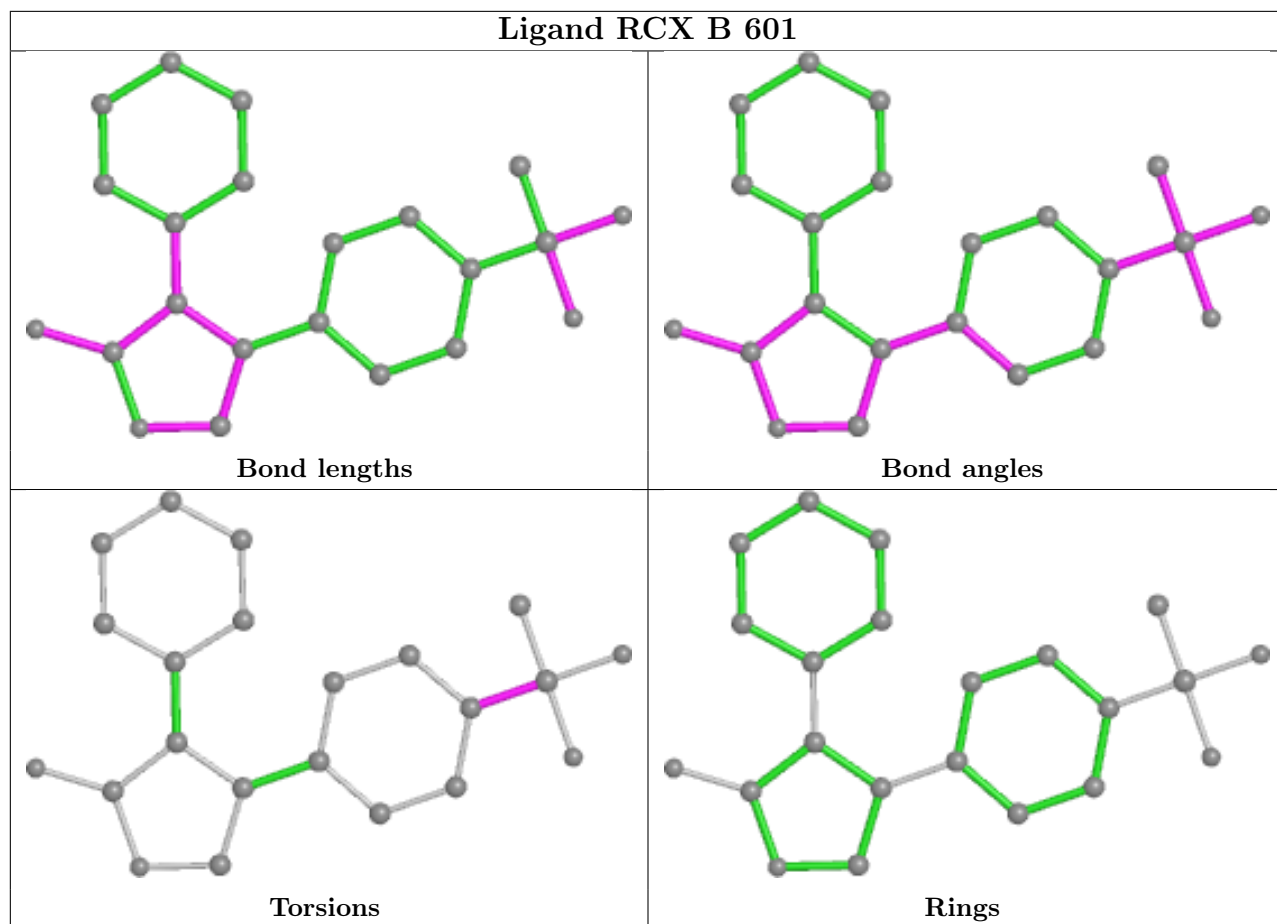
2 monomers are involved in 4 short contacts:

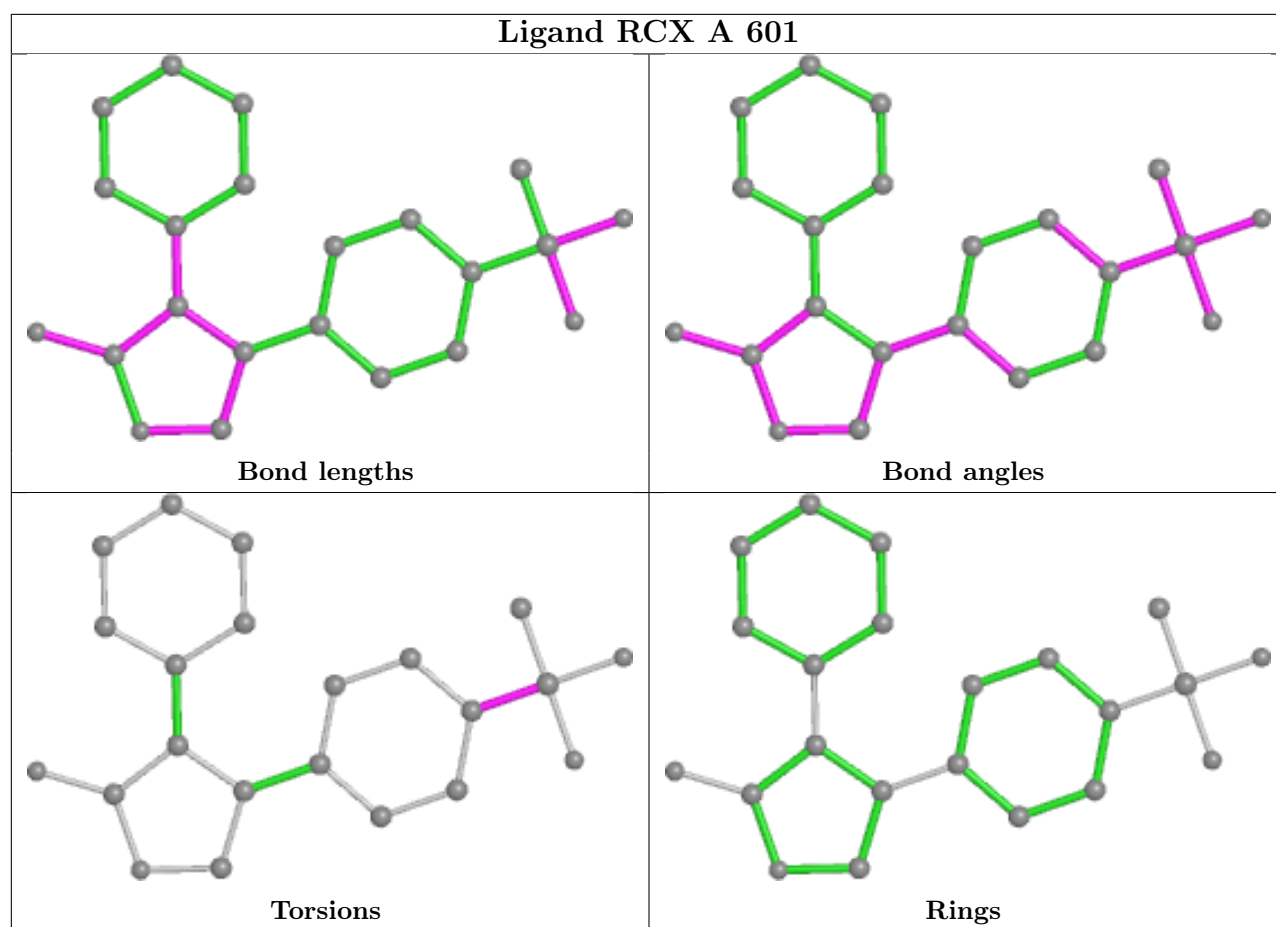
Mol	Chain	Res	Type	Clashes	Symm-Clashes
4	B	602	COH	2	0
4	A	602	COH	2	0

The following is a two-dimensional graphical depiction of Mogul quality analysis of bond lengths, bond angles, torsion angles, and ring geometry for all instances of the Ligand of Interest. In addition, ligands with molecular weight > 250 and outliers as shown on the validation Tables will also be included. For torsion angles, if less than 5% of the Mogul distribution of torsion angles is within 10 degrees of the torsion angle in question, then that torsion angle is considered an outlier. Any bond that is central to one or more torsion angles identified as an outlier by Mogul will be highlighted in the graph. For rings, the root-mean-square deviation (RMSD) between the ring in question and similar rings identified by Mogul is calculated over all ring torsion angles. If the average RMSD is greater than 60 degrees and the minimal RMSD between the ring in question and any Mogul-identified rings is also greater than 60 degrees, then that ring is considered an outlier. The outliers are highlighted in purple. The color gray indicates Mogul did not find sufficient equivalents in the CSD to analyse the geometry.









## 5.7 Other polymers [i](#)

There are no such residues in this entry.

## 5.8 Polymer linkage issues [i](#)

There are no chain breaks in this entry.



## 6 Fit of model and data

### 6.1 Protein, DNA and RNA chains

In the following table, the column labelled ‘#RSRZ > 2’ contains the number (and percentage) of RSRZ outliers, followed by percent RSRZ outliers for the chain as percentile scores relative to all X-ray entries and entries of similar resolution. The OWAB column contains the minimum, median, 95<sup>th</sup> percentile and maximum values of the occupancy-weighted average B-factor per residue. The column labelled ‘Q < 0.9’ lists the number of (and percentage) of residues with an average occupancy less than 0.9.

Mol	Chain	Analysed	<RSRZ>	#RSRZ>2	OWAB(Å <sup>2</sup> )	Q<0.9
1	A	551/551 (100%)	-0.11	11 (1%) 65 67	21, 44, 67, 89	0
1	B	551/551 (100%)	-0.03	18 (3%) 46 46	23, 49, 79, 96	0
All	All	1102/1102 (100%)	-0.07	29 (2%) 56 57	21, 46, 75, 96	0

All (29) RSRZ outliers are listed below:

Mol	Chain	Res	Type	RSRZ
1	B	277	PRO	3.8
1	B	278	GLN	3.6
1	A	65	TYR	3.6
1	B	75	LEU	3.6
1	A	368	ASN	3.6
1	B	165	VAL	2.9
1	B	158	ASP	2.9
1	A	74	PHE	2.8
1	B	80	LEU	2.7
1	A	53	ASP	2.7
1	A	215	LYS	2.7
1	B	81	PHE	2.6
1	B	52	PHE	2.6
1	B	74	PHE	2.5
1	A	75	LEU	2.5
1	B	186	LYS	2.5
1	B	160	PRO	2.5
1	B	65	TYR	2.5
1	A	577	PHE	2.4
1	B	318	GLN	2.4
1	B	216	ARG	2.4
1	A	302	ALA	2.3
1	B	368	ASN	2.1
1	A	158	ASP	2.1

*Continued on next page...*

*Continued from previous page...*

Mol	Chain	Res	Type	RSRZ
1	B	157	ASP	2.1
1	B	270	GLN	2.0
1	A	278	GLN	2.0
1	A	78	ILE	2.0
1	B	166	LYS	2.0

## 6.2 Non-standard residues in protein, DNA, RNA chains [\(i\)](#)

There are no non-standard protein/DNA/RNA residues in this entry.

## 6.3 Carbohydrates [\(i\)](#)

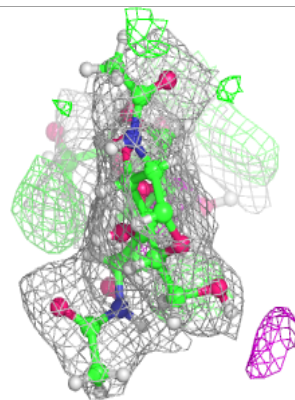
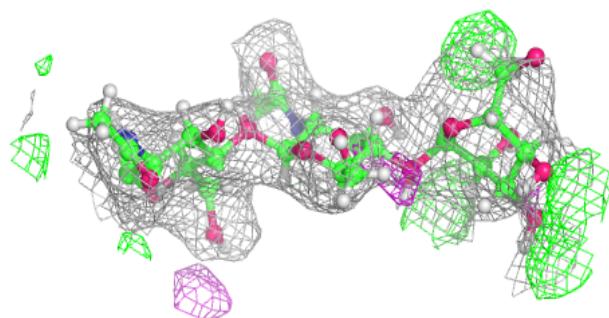
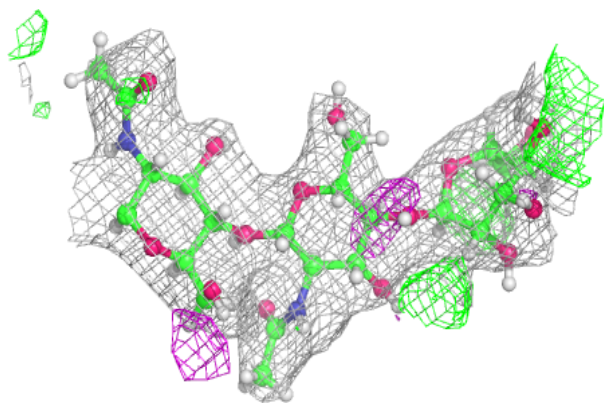
In the following table, the Atoms column lists the number of modelled atoms in the group and the number defined in the chemical component dictionary. The B-factors column lists the minimum, median, 95<sup>th</sup> percentile and maximum values of B factors of atoms in the group. The column labelled 'Q< 0.9' lists the number of atoms with occupancy less than 0.9.

Mol	Type	Chain	Res	Atoms	RSCC	RSR	B-factors(Å <sup>2</sup> )	Q<0.9
2	MAN	C	3	11/12	0.76	0.36	59,65,79,82	0
2	MAN	D	3	11/12	0.77	0.39	87,95,112,114	0
2	NAG	C	2	14/15	0.92	0.28	43,52,64,73	0
2	NAG	D	2	14/15	0.94	0.26	54,68,86,99	0
2	NAG	C	1	14/15	0.96	0.17	28,37,43,47	0
2	NAG	D	1	14/15	0.96	0.19	30,40,51,61	0

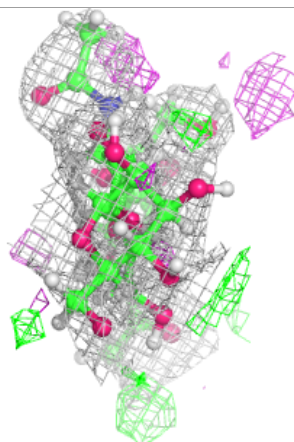
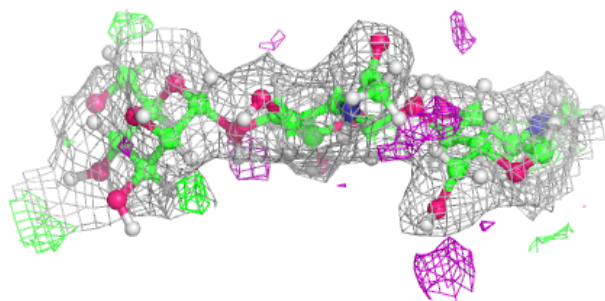
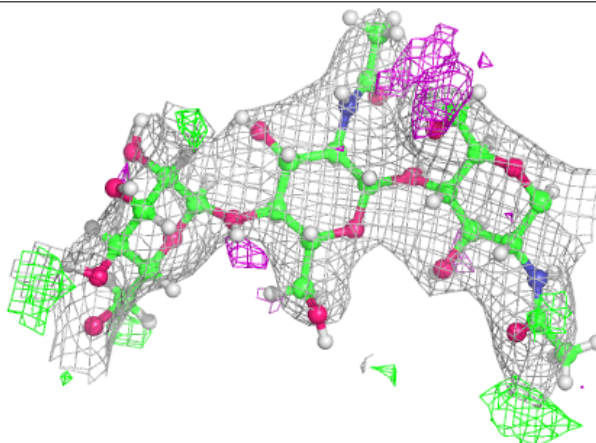
The following is a graphical depiction of the model fit to experimental electron density for oligosaccharide. Each fit is shown from different orientation to approximate a three-dimensional view.

**Electron density around Chain C:**

$2mF_o-DF_c$  (at 0.7 rmsd) in gray  
 $mF_o-DF_c$  (at 3 rmsd) in purple (negative)  
and green (positive)

**Electron density around Chain D:**

$2mF_o-DF_c$  (at 0.7 rmsd) in gray  
 $mF_o-DF_c$  (at 3 rmsd) in purple (negative)  
and green (positive)



## 6.4 Ligands

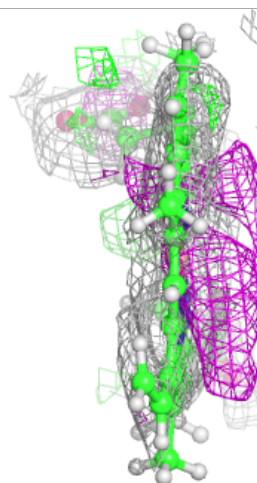
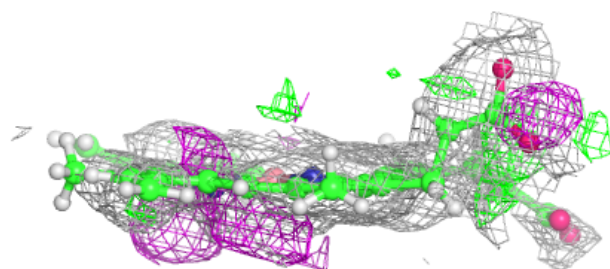
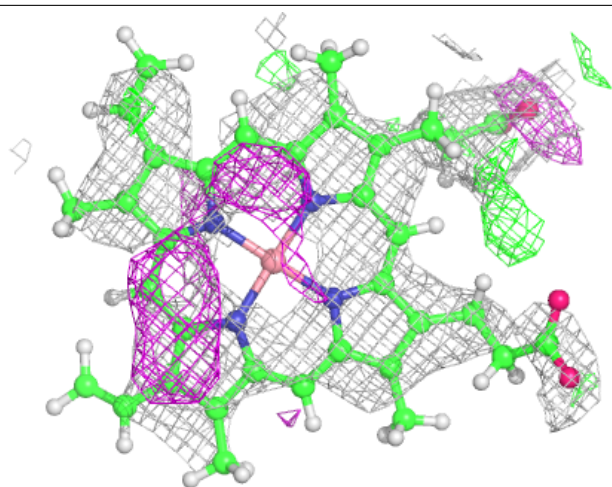
In the following table, the Atoms column lists the number of modelled atoms in the group and the number defined in the chemical component dictionary. The B-factors column lists the minimum, median, 95<sup>th</sup> percentile and maximum values of B factors of atoms in the group. The column labelled 'Q< 0.9' lists the number of atoms with occupancy less than 0.9.

Mol	Type	Chain	Res	Atoms	RSCC	RSR	B-factors(Å <sup>2</sup> )	Q<0.9
8	PO4	B	610	5/5	0.73	0.31	106,106,107,108	0
8	PO4	A	611	5/5	0.80	0.32	104,104,105,106	0
4	COH	B	602	43/43	0.80	0.30	60,100,120,123	0
3	RCX	B	601	22/22	0.81	0.30	57,101,106,108	0
7	GOL	A	608	6/6	0.85	0.16	56,68,73,76	0
4	COH	A	602	43/43	0.87	0.23	70,79,94,97	0
5	NAG	B	606	14/15	0.87	0.20	44,52,59,62	0
6	NH4	B	607	1/1	0.87	0.21	55,66,66,66	0
5	NAG	A	606	14/15	0.88	0.28	40,51,63,64	0
6	NH4	A	607	1/1	0.88	0.28	45,54,54,54	0
3	RCX	A	601	22/22	0.90	0.22	24,56,60,61	0
8	PO4	B	608	5/5	0.91	0.27	86,86,86,87	0
8	PO4	A	610	5/5	0.94	0.28	78,78,80,82	0
8	PO4	B	609	5/5	0.95	0.27	83,83,84,86	0
8	PO4	A	609	5/5	0.95	0.19	55,55,57,59	0

The following is a graphical depiction of the model fit to experimental electron density of all instances of the Ligand of Interest. In addition, ligands with molecular weight > 250 and outliers as shown on the geometry validation Tables will also be included. Each fit is shown from different orientation to approximate a three-dimensional view.

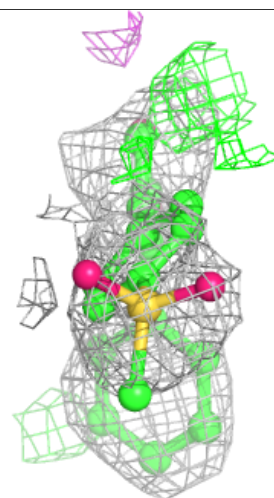
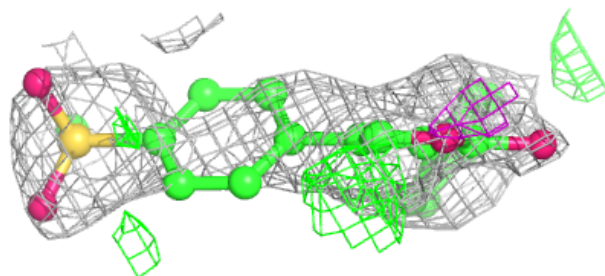
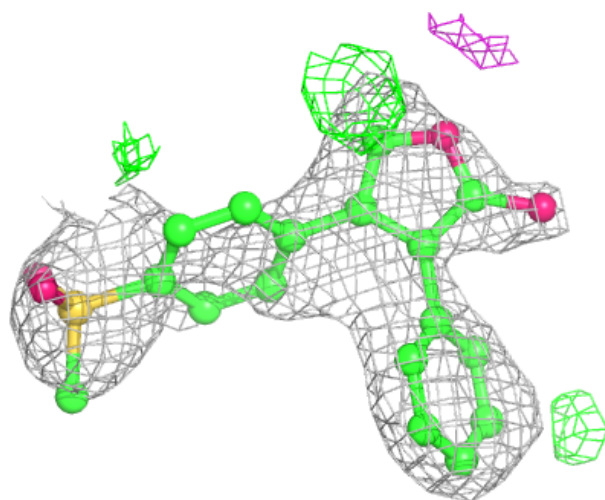
**Electron density around COH B 602:**

$2mF_o-DF_c$  (at 0.7 rmsd) in gray  
 $mF_o-DF_c$  (at 3 rmsd) in purple (negative)  
and green (positive)



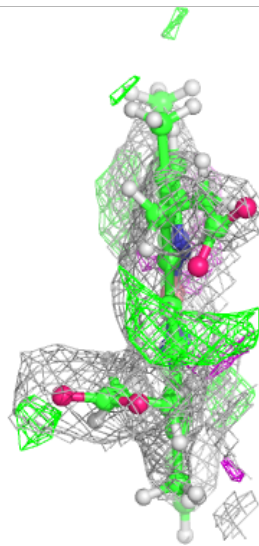
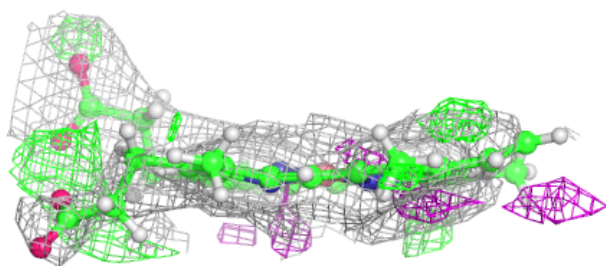
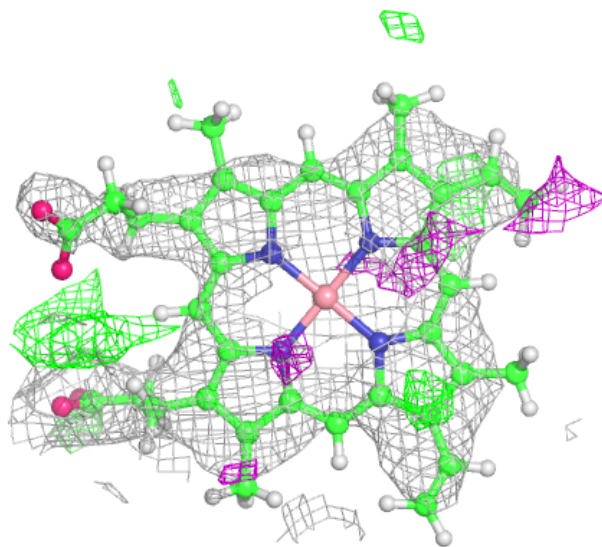
**Electron density around RCX B 601:**

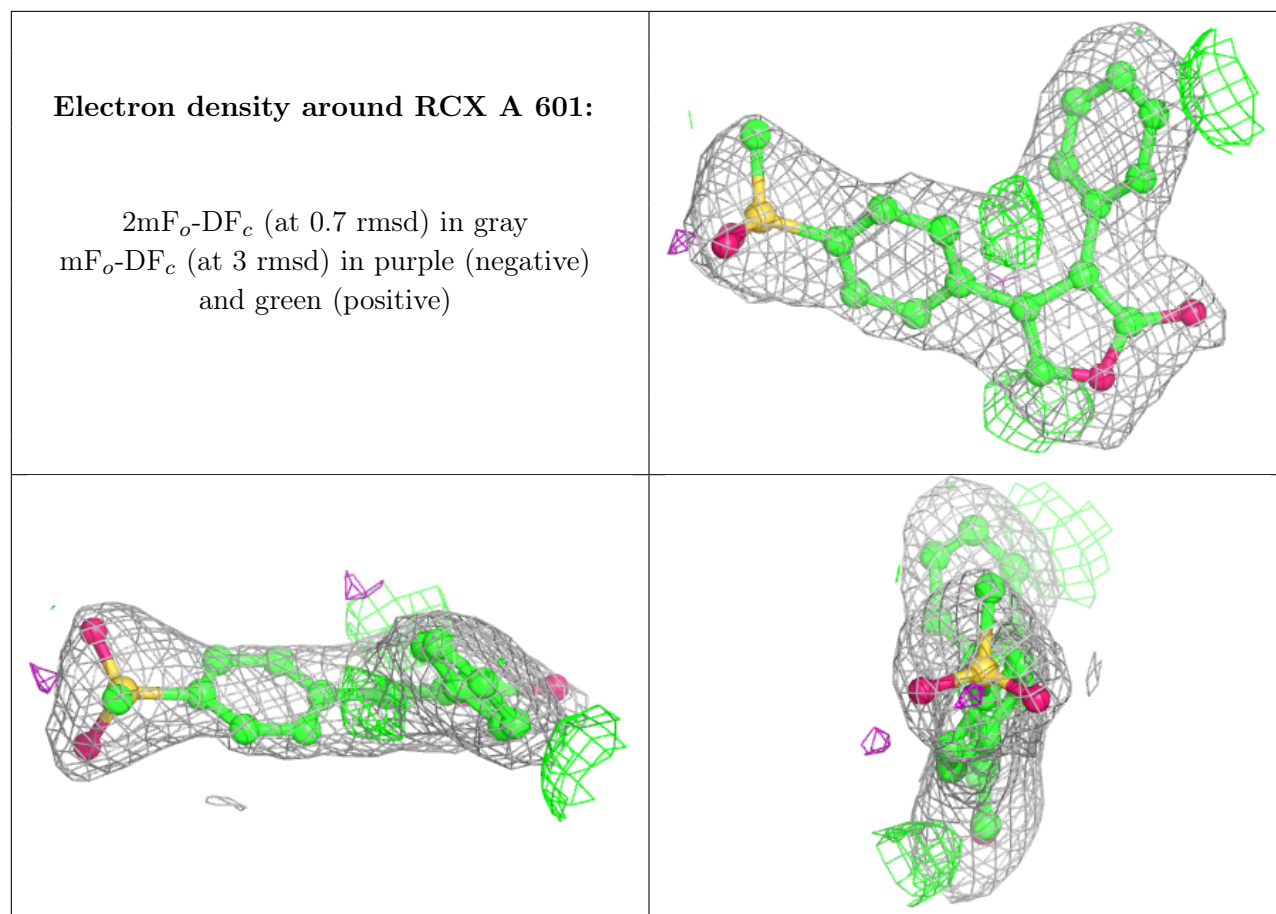
$2mF_o-DF_c$  (at 0.7 rmsd) in gray  
 $mF_o-DF_c$  (at 3 rmsd) in purple (negative)  
and green (positive)



**Electron density around COH A 602:**

$2mF_o-DF_c$  (at 0.7 rmsd) in gray  
 $mF_o-DF_c$  (at 3 rmsd) in purple (negative)  
and green (positive)





## 6.5 Other polymers [i](#)

There are no such residues in this entry.