



Full wwPDB X-ray Structure Validation Report ⓘ

Jan 5, 2024 – 12:53 am GMT

PDB ID : 5IK8
Title : Laminin A2LG45 I-form, G6/7 bound.
Authors : Briggs, D.C.; Hohenester, E.; Campbell, K.P.
Deposited on : 2016-03-03
Resolution : 2.00 Å(reported)

This is a Full wwPDB X-ray Structure Validation Report for a publicly released PDB entry.

We welcome your comments at validation@mail.wwpdb.org

A user guide is available at

<https://www.wwpdb.org/validation/2017/XrayValidationReportHelp>

with specific help available everywhere you see the ⓘ symbol.

The types of validation reports are described at

<http://www.wwpdb.org/validation/2017/FAQs#types>.

The following versions of software and data (see [references ⓘ](#)) were used in the production of this report:

MolProbity : 4.02b-467
Mogul : 1.8.4, CSD as541be (2020)
Xtrriage (Phenix) : 1.13
EDS : 2.36
Percentile statistics : 20191225.v01 (using entries in the PDB archive December 25th 2019)
Refmac : 5.8.0158
CCP4 : 7.0.044 (Gargrove)
Ideal geometry (proteins) : Engh & Huber (2001)
Ideal geometry (DNA, RNA) : Parkinson et al. (1996)
Validation Pipeline (wwPDB-VP) : 2.36

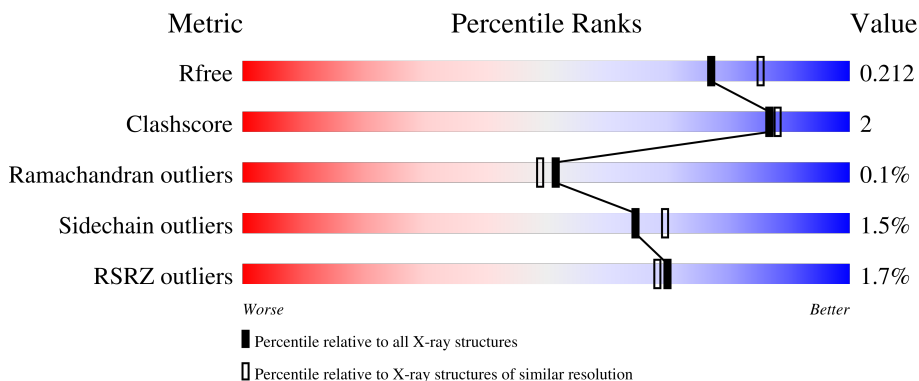
1 Overall quality at a glance

The following experimental techniques were used to determine the structure:

X-RAY DIFFRACTION

The reported resolution of this entry is 2.00 Å.

Percentile scores (ranging between 0-100) for global validation metrics of the entry are shown in the following graphic. The table shows the number of entries on which the scores are based.



Metric	Whole archive (#Entries)	Similar resolution (#Entries, resolution range(Å))
R_{free}	130704	8085 (2.00-2.00)
Clashscore	141614	9178 (2.00-2.00)
Ramachandran outliers	138981	9054 (2.00-2.00)
Sidechain outliers	138945	9053 (2.00-2.00)
RSRZ outliers	127900	7900 (2.00-2.00)

The table below summarises the geometric issues observed across the polymeric chains and their fit to the electron density. The red, orange, yellow and green segments of the lower bar indicate the fraction of residues that contain outliers for ≥ 3 , 2, 1 and 0 types of geometric quality criteria respectively. A grey segment represents the fraction of residues that are not modelled. The numeric value for each fraction is indicated below the corresponding segment, with a dot representing fractions $\leq 5\%$. The upper red bar (where present) indicates the fraction of residues that have poor fit to the electron density. The numeric value is given above the bar.

Mol	Chain	Length	Quality of chain
1	A	381	 2% 95% 5%
1	B	381	 2% 93% 6% ..
2	C	4	 75% 25%

The following table lists non-polymeric compounds, carbohydrate monomers and non-standard residues in protein, DNA, RNA chains that are outliers for geometric or electron-density-fit criteria:

Mol	Type	Chain	Res	Chirality	Geometry	Clashes	Electron density
5	FLC	A	4005	-	-	-	X

2 Entry composition [i](#)

There are 8 unique types of molecules in this entry. The entry contains 12268 atoms, of which 5799 are hydrogens and 0 are deuteriums.

In the tables below, the ZeroOcc column contains the number of atoms modelled with zero occupancy, the AltConf column contains the number of residues with at least one atom in alternate conformation and the Trace column contains the number of residues modelled with at most 2 atoms.

- Molecule 1 is a protein called Laminin subunit alpha-2.

Mol	Chain	Residues	Atoms						ZeroOcc	AltConf	Trace
			Total	C	H	N	O	S			
1	A	381	5749	1828	2855	499	551	16	0	1	0
1	B	378	5675	1809	2808	493	550	15	0	1	0

There are 10 discrepancies between the modelled and reference sequences:

Chain	Residue	Modelled	Actual	Comment	Reference
A	2738	ALA	-	expression tag	UNP Q60675
A	2739	PRO	-	expression tag	UNP Q60675
A	2740	LEU	-	expression tag	UNP Q60675
A	2741	ALA	-	expression tag	UNP Q60675
A	3011	GLU	GLY	conflict	UNP Q60675
B	2738	ALA	-	expression tag	UNP Q60675
B	2739	PRO	-	expression tag	UNP Q60675
B	2740	LEU	-	expression tag	UNP Q60675
B	2741	ALA	-	expression tag	UNP Q60675
B	3011	GLU	GLY	conflict	UNP Q60675

- Molecule 2 is an oligosaccharide called alpha-D-xylopyranose-(1-3)-beta-D-glucopyranuronic acid-(1-3)-alpha-D-xylopyranose-(1-3)-beta-D-glucopyranuronic acid.

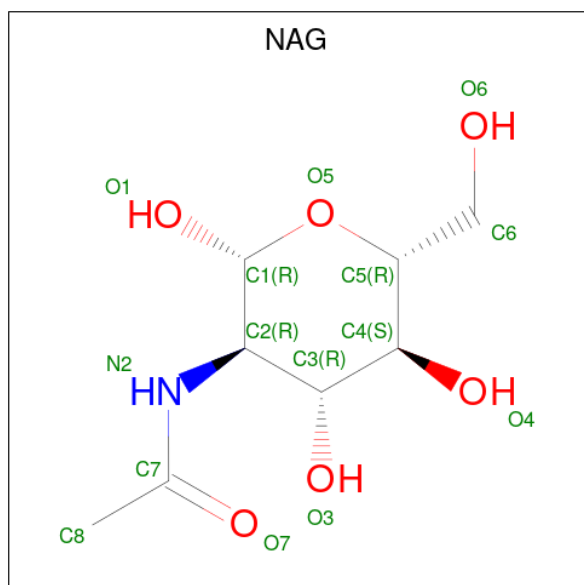


Mol	Chain	Residues	Atoms				ZeroOcc	AltConf	Trace
			Total	C	H	O			
2	C	4	72	22	30	20	0	0	0

- Molecule 3 is CALCIUM ION (three-letter code: CA) (formula: Ca).

Mol	Chain	Residues	Atoms	ZeroOcc	AltConf
3	A	2	Total Ca 2 2	0	0
3	B	2	Total Ca 2 2	0	0

- Molecule 4 is 2-acetamido-2-deoxy-beta-D-glucopyranose (three-letter code: NAG) (formula: $C_8H_{15}NO_6$).



Mol	Chain	Residues	Atoms	ZeroOcc	AltConf
4	A	1	Total C H N O 27 8 13 1 5	0	0
4	B	1	Total C H N O 27 8 13 1 5	0	0

- Molecule 5 is CITRATE ANION (three-letter code: FLC) (formula: $C_6H_5O_7$).



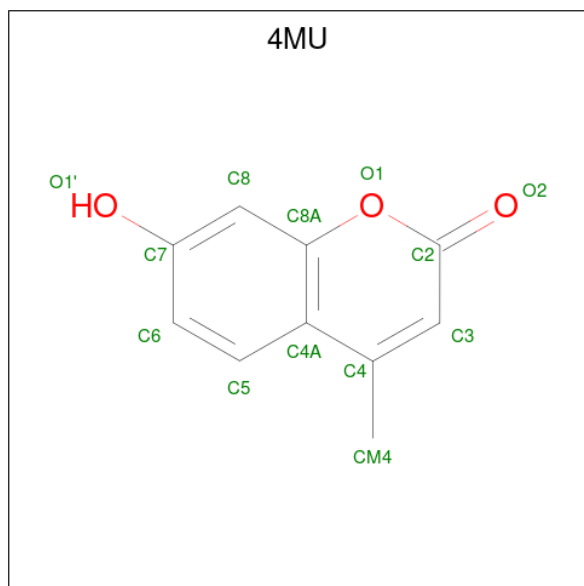
Mol	Chain	Residues	Atoms				ZeroOcc	AltConf
			Total	C	H	O		
5	A	1	18	6	5	7	0	0
5	A	1	18	6	5	7	0	0
5	B	1	18	6	5	7	0	0
5	B	1	18	6	5	7	0	0

- Molecule 6 is 1,2-ETHANEDIOL (three-letter code: EDO) (formula: C₂H₆O₂).



Mol	Chain	Residues	Atoms				ZeroOcc	AltConf
6	A	1	Total	C	H	O	0	0
			10	2	6	2		
6	A	1	Total	C	H	O	0	0
			10	2	6	2		
6	A	1	Total	C	H	O	0	0
			10	2	6	2		
6	A	1	Total	C	H	O	0	0
			9	2	5	2		
6	B	1	Total	C	H	O	0	0
			10	2	6	2		
6	B	1	Total	C	H	O	0	0
			10	2	6	2		
6	B	1	Total	C	H	O	0	0
			10	2	6	2		
6	B	1	Total	C	H	O	0	0
			10	2	6	2		

- Molecule 7 is 7-hydroxy-4-methyl-2H-chromen-2-one (three-letter code: 4MU) (formula: C₁₀H₈O₃).



Mol	Chain	Residues	Atoms				ZeroOcc	AltConf
7	B	1	Total	C	H	O	0	0
			20	10	7	3		

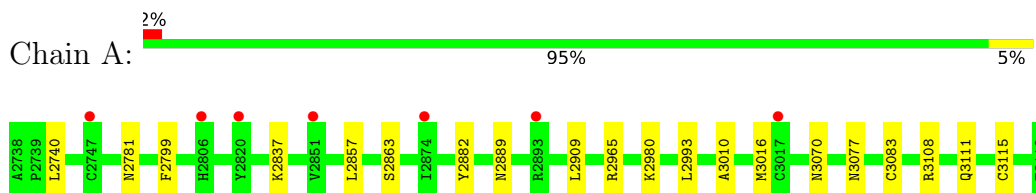
- Molecule 8 is water.

Mol	Chain	Residues	Atoms		ZeroOcc	AltConf
8	A	279	Total 279	O 279	0	0
8	B	254	Total 254	O 254	0	0

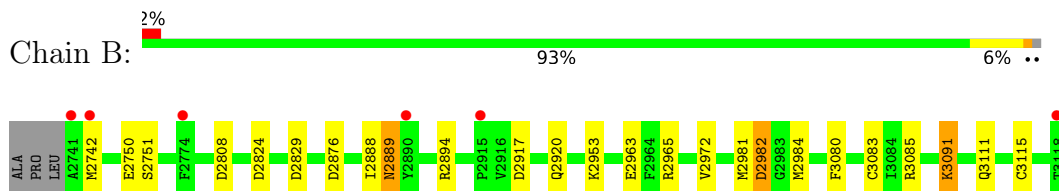
3 Residue-property plots i

These plots are drawn for all protein, RNA, DNA and oligosaccharide chains in the entry. The first graphic for a chain summarises the proportions of the various outlier classes displayed in the second graphic. The second graphic shows the sequence view annotated by issues in geometry and electron density. Residues are color-coded according to the number of geometric quality criteria for which they contain at least one outlier: green = 0, yellow = 1, orange = 2 and red = 3 or more. A red dot above a residue indicates a poor fit to the electron density ($RSRZ > 2$). Stretches of 2 or more consecutive residues without any outlier are shown as a green connector. Residues present in the sample, but not in the model, are shown in grey.

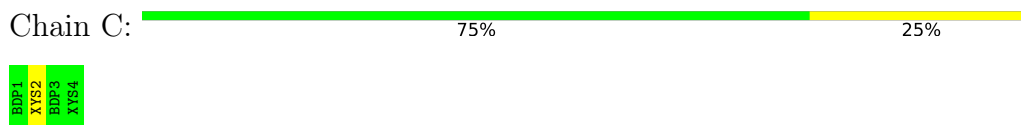
- Molecule 1: Laminin subunit alpha-2



- Molecule 1: Laminin subunit alpha-2



- Molecule 2: alpha-D-xylopyranose-(1-3)-beta-D-glucopyranuronic acid-(1-3)-alpha-D-xylopyranose-(1-3)-beta-D-glucopyranuronic acid



4 Data and refinement statistics

Property	Value	Source
Space group	I 21 21 21	Depositor
Cell constants a, b, c, α , β , γ	111.54Å 126.29Å 144.00Å 90.00° 90.00° 90.00°	Depositor
Resolution (Å)	55.77 – 2.00 55.77 – 2.00	Depositor EDS
% Data completeness (in resolution range)	100.0 (55.77-2.00) 94.6 (55.77-2.00)	Depositor EDS
R_{merge}	0.09	Depositor
R_{sym}	(Not available)	Depositor
$\langle I/\sigma(I) \rangle$ ¹	1.39 (at 2.00Å)	Xtrriage
Refinement program	PHENIX (1.10.1_2155: ???)	Depositor
R, R_{free}	0.177 , 0.209 0.179 , 0.212	Depositor DCC
R_{free} test set	3436 reflections (5.00%)	wwPDB-VP
Wilson B-factor (Å ²)	38.0	Xtrriage
Anisotropy	0.149	Xtrriage
Bulk solvent k_{sol} (e/Å ³), B_{sol} (Å ²)	0.37 , 46.1	EDS
L-test for twinning ²	$\langle L \rangle = 0.48$, $\langle L^2 \rangle = 0.31$	Xtrriage
Estimated twinning fraction	No twinning to report.	Xtrriage
F_o, F_c correlation	0.97	EDS
Total number of atoms	12268	wwPDB-VP
Average B, all atoms (Å ²)	55.0	wwPDB-VP

Xtrriage's analysis on translational NCS is as follows: *The largest off-origin peak in the Patterson function is 3.76% of the height of the origin peak. No significant pseudotranslation is detected.*

¹Intensities estimated from amplitudes.

²Theoretical values of $\langle |L| \rangle$, $\langle L^2 \rangle$ for acentric reflections are 0.5, 0.333 respectively for untwinned datasets, and 0.375, 0.2 for perfectly twinned datasets.

5 Model quality [i](#)

5.1 Standard geometry [i](#)

Bond lengths and bond angles in the following residue types are not validated in this section: 4MU, NAG, BDP, FLC, EDO, YYS, CA

The Z score for a bond length (or angle) is the number of standard deviations the observed value is removed from the expected value. A bond length (or angle) with $|Z| > 5$ is considered an outlier worth inspection. RMSZ is the root-mean-square of all Z scores of the bond lengths (or angles).

Mol	Chain	Bond lengths		Bond angles	
		RMSZ	# Z >5	RMSZ	# Z >5
1	A	0.26	0/2956	0.48	0/4006
1	B	0.25	0/2928	0.48	0/3971
All	All	0.25	0/5884	0.48	0/7977

There are no bond length outliers.

There are no bond angle outliers.

There are no chirality outliers.

There are no planarity outliers.

5.2 Too-close contacts [i](#)

In the following table, the Non-H and H(model) columns list the number of non-hydrogen atoms and hydrogen atoms in the chain respectively. The H(added) column lists the number of hydrogen atoms added and optimized by MolProbity. The Clashes column lists the number of clashes within the asymmetric unit, whereas Symm-Clashes lists symmetry-related clashes.

Mol	Chain	Non-H	H(model)	H(added)	Clashes	Symm-Clashes
1	A	2894	2855	2855	10	2
1	B	2867	2808	2807	14	1
2	C	42	30	26	0	0
3	A	2	0	0	0	0
3	B	2	0	0	0	0
4	A	14	13	13	1	0
4	B	14	13	13	0	0
5	A	26	10	9	1	1
5	B	26	10	9	0	0
6	A	20	29	30	0	0
6	B	16	24	24	0	0

Continued on next page...

Continued from previous page...

Mol	Chain	Non-H	H(model)	H(added)	Clashes	Symm-Clashes
7	B	13	7	7	0	0
8	A	279	0	0	5	1
8	B	254	0	0	3	1
All	All	6469	5799	5793	25	3

The all-atom clashscore is defined as the number of clashes found per 1000 atoms (including hydrogen atoms). The all-atom clashscore for this structure is 2.

All (25) close contacts within the same asymmetric unit are listed below, sorted by their clash magnitude.

Atom-1	Atom-2	Interatomic distance (Å)	Clash overlap (Å)
1:B:2965:ARG:NH2	1:B:3115[A]:CYS:SG	2.51	0.84
1:B:2824:ASP:OD2	1:B:2894:ARG:NH2	2.11	0.83
5:A:4005:FLC:OG2	8:A:4101:HOH:O	2.06	0.74
1:B:2742:MET:O	1:B:2750:GLU:N	2.23	0.71
1:B:2829:ASP:OD2	8:B:4101:HOH:O	2.11	0.69
1:A:2965:ARG:NH2	1:A:3115[A]:CYS:SG	2.66	0.69
1:A:2837:LYS:NZ	8:A:4104:HOH:O	2.29	0.66
1:A:3070:ASN:OD1	8:A:4102:HOH:O	2.14	0.64
1:B:2917:ASP:OD1	8:B:4102:HOH:O	2.16	0.60
1:B:2920:GLN:OE1	8:B:4103:HOH:O	2.19	0.51
1:B:2981:MET:O	1:B:2982:ASP:HB2	2.12	0.50
1:A:2889:ASN:OD1	4:A:4003:NAG:N2	2.44	0.50
1:B:2888:ILE:HG22	1:B:2889:ASN:OD1	2.11	0.50
1:A:2781:ASN:N	8:A:4106:HOH:O	2.33	0.48
1:A:3108:ARG:NH2	8:A:4119:HOH:O	2.47	0.46
1:A:3010:ALA:HB2	1:A:3016:MET:HG2	1.98	0.46
1:A:2799:PHE:HA	1:A:2882:TYR:O	2.18	0.44
1:B:3083:CYS:SG	1:B:3115[B]:CYS:HB3	2.58	0.43
1:B:2972:VAL:O	1:B:3080:PHE:HB2	2.19	0.43
1:A:3083:CYS:SG	1:A:3115[B]:CYS:HB3	2.59	0.42
1:B:2808:ASP:HB2	1:B:2876:ASP:O	2.20	0.42
1:B:2953:LYS:O	1:B:3091:LYS:HD2	2.19	0.41
1:B:2963:GLU:OE1	1:B:3085:ARG:NE	2.41	0.41
1:A:2857:LEU:O	1:A:2863:SER:HA	2.22	0.40
1:B:2742:MET:N	1:B:2750:GLU:O	2.54	0.40

All (3) symmetry-related close contacts are listed below. The label for Atom-2 includes the symmetry operator and encoded unit-cell translations to be applied.

Atom-1	Atom-2	Interatomic distance (Å)	Clash overlap (Å)
8:A:4289:HOH:O	8:B:4301:HOH:O[4_555]	2.06	0.14
1:A:2980:LYS:NZ	1:B:2829:ASP:OD1[4_555]	2.11	0.09
1:A:3077:ASN:HD22	5:A:4005:FLC:OG1[8_555]	1.59	0.01

5.3 Torsion angles [i](#)

5.3.1 Protein backbone [i](#)

In the following table, the Percentiles column shows the percent Ramachandran outliers of the chain as a percentile score with respect to all X-ray entries followed by that with respect to entries of similar resolution.

The Analysed column shows the number of residues for which the backbone conformation was analysed, and the total number of residues.

Mol	Chain	Analysed	Favoured	Allowed	Outliers	Percentiles	
1	A	380/381 (100%)	369 (97%)	11 (3%)	0	100	100
1	B	377/381 (99%)	361 (96%)	15 (4%)	1 (0%)	41	37
All	All	757/762 (99%)	730 (96%)	26 (3%)	1 (0%)	51	49

All (1) Ramachandran outliers are listed below:

Mol	Chain	Res	Type
1	B	2982	ASP

5.3.2 Protein sidechains [i](#)

In the following table, the Percentiles column shows the percent sidechain outliers of the chain as a percentile score with respect to all X-ray entries followed by that with respect to entries of similar resolution.

The Analysed column shows the number of residues for which the sidechain conformation was analysed, and the total number of residues.

Mol	Chain	Analysed	Rotameric	Outliers	Percentiles	
1	A	313/316 (99%)	309 (99%)	4 (1%)	69	74
1	B	309/316 (98%)	304 (98%)	5 (2%)	62	67
All	All	622/632 (98%)	613 (99%)	9 (1%)	65	72

All (9) residues with a non-rotameric sidechain are listed below:

Mol	Chain	Res	Type
1	A	2740	LEU
1	A	2909	LEU
1	A	2993	LEU
1	A	3111	GLN
1	B	2751	SER
1	B	2889	ASN
1	B	2984	MET
1	B	3091	LYS
1	B	3111	GLN

Sometimes sidechains can be flipped to improve hydrogen bonding and reduce clashes. There are no such sidechains identified.

5.3.3 RNA [i](#)

There are no RNA molecules in this entry.

5.4 Non-standard residues in protein, DNA, RNA chains [i](#)

There are no non-standard protein/DNA/RNA residues in this entry.

5.5 Carbohydrates [i](#)

4 monosaccharides are modelled in this entry.

In the following table, the Counts columns list the number of bonds (or angles) for which Mogul statistics could be retrieved, the number of bonds (or angles) that are observed in the model and the number of bonds (or angles) that are defined in the Chemical Component Dictionary. The Link column lists molecule types, if any, to which the group is linked. The Z score for a bond length (or angle) is the number of standard deviations the observed value is removed from the expected value. A bond length (or angle) with $|Z| > 2$ is considered an outlier worth inspection. RMSZ is the root-mean-square of all Z scores of the bond lengths (or angles).

Mol	Type	Chain	Res	Link	Bond lengths			Bond angles		
					Counts	RMSZ	$\# Z > 2$	Counts	RMSZ	$\# Z > 2$
2	BDP	C	1	7,2	12,12,13	0.82	0	14,17,19	0.76	0
2	XYS	C	2	2,3	9,9,10	0.28	0	10,12,14	0.87	1 (10%)
2	BDP	C	3	2,3	12,12,13	0.82	0	14,17,19	0.69	0
2	XYS	C	4	2	9,9,10	0.21	0	10,12,14	0.60	0

In the following table, the Chirals column lists the number of chiral outliers, the number of chiral centers analysed, the number of these observed in the model and the number defined in the

Chemical Component Dictionary. Similar counts are reported in the Torsion and Rings columns. '-' means no outliers of that kind were identified.

Mol	Type	Chain	Res	Link	Chirals	Torsions	Rings
2	BDP	C	1	7,2	-	0/4/21/24	0/1/1/1
2	XYS	C	2	2,3	-	-	0/1/1/1
2	BDP	C	3	2,3	-	0/4/21/24	0/1/1/1
2	XYS	C	4	2	-	-	0/1/1/1

There are no bond length outliers.

All (1) bond angle outliers are listed below:

Mol	Chain	Res	Type	Atoms	Z	Observed(°)	Ideal(°)
2	C	2	XYS	C1-C2-C3	2.10	112.24	109.67

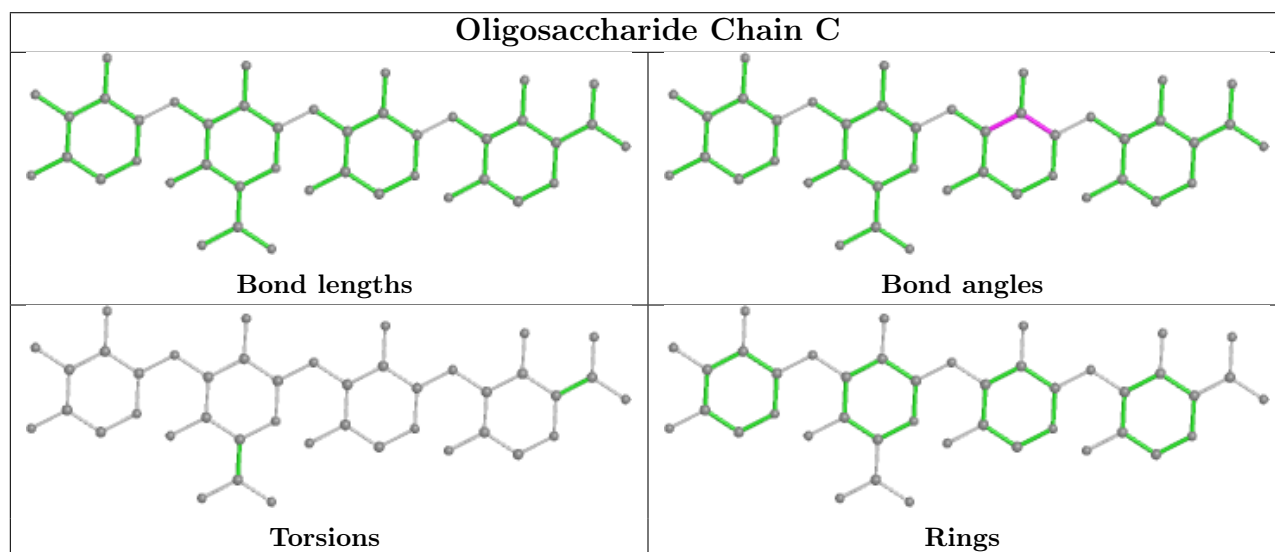
There are no chirality outliers.

There are no torsion outliers.

There are no ring outliers.

No monomer is involved in short contacts.

The following is a two-dimensional graphical depiction of Mogul quality analysis of bond lengths, bond angles, torsion angles, and ring geometry for oligosaccharide.



5.6 Ligand geometry [i](#)

Of 20 ligands modelled in this entry, 4 are monoatomic - leaving 16 for Mogul analysis.

In the following table, the Counts columns list the number of bonds (or angles) for which Mogul statistics could be retrieved, the number of bonds (or angles) that are observed in the model and

the number of bonds (or angles) that are defined in the Chemical Component Dictionary. The Link column lists molecule types, if any, to which the group is linked. The Z score for a bond length (or angle) is the number of standard deviations the observed value is removed from the expected value. A bond length (or angle) with $|Z| > 2$ is considered an outlier worth inspection. RMSZ is the root-mean-square of all Z scores of the bond lengths (or angles).

Mol	Type	Chain	Res	Link	Bond lengths			Bond angles		
					Counts	RMSZ	# Z > 2	Counts	RMSZ	# Z > 2
5	FLC	B	4010	3	12,12,12	1.11	0	17,17,17	1.23	2 (11%)
6	EDO	B	4012	-	3,3,3	0.45	0	2,2,2	0.30	0
6	EDO	A	4009	-	3,3,3	0.45	0	2,2,2	0.32	0
5	FLC	A	4005	-	12,12,12	1.18	1 (8%)	17,17,17	1.47	3 (17%)
6	EDO	B	4013	-	3,3,3	0.45	0	2,2,2	0.28	0
5	FLC	B	4009	-	12,12,12	1.18	1 (8%)	17,17,17	1.35	2 (11%)
6	EDO	A	4010	-	3,3,3	0.44	0	2,2,2	0.29	0
4	NAG	B	4003	1	14,14,15	1.60	1 (7%)	17,19,21	1.41	1 (5%)
6	EDO	B	4011	-	3,3,3	0.44	0	2,2,2	0.39	0
4	NAG	A	4003	1	14,14,15	0.33	0	17,19,21	0.62	1 (5%)
6	EDO	A	4008	-	3,3,3	0.45	0	2,2,2	0.36	0
5	FLC	A	4004	3	12,12,12	1.16	1 (8%)	17,17,17	1.37	2 (11%)
7	4MU	B	4004	2	14,14,14	0.88	0	20,20,20	0.81	1 (5%)
6	EDO	A	4006	-	3,3,3	0.44	0	2,2,2	0.30	0
6	EDO	A	4007	-	3,3,3	0.46	0	2,2,2	0.24	0
6	EDO	B	4014	-	3,3,3	0.45	0	2,2,2	0.24	0

In the following table, the Chirals column lists the number of chiral outliers, the number of chiral centers analysed, the number of these observed in the model and the number defined in the Chemical Component Dictionary. Similar counts are reported in the Torsion and Rings columns. '-' means no outliers of that kind were identified.

Mol	Type	Chain	Res	Link	Chirals	Torsions	Rings
5	FLC	B	4010	3	-	8/16/16/16	-
6	EDO	B	4012	-	-	0/1/1/1	-
6	EDO	A	4009	-	-	0/1/1/1	-
5	FLC	A	4005	-	-	3/16/16/16	-
6	EDO	B	4013	-	-	1/1/1/1	-
5	FLC	B	4009	-	-	0/16/16/16	-
6	EDO	A	4010	-	-	0/1/1/1	-
4	NAG	B	4003	1	-	2/6/23/26	0/1/1/1
6	EDO	B	4011	-	-	0/1/1/1	-
4	NAG	A	4003	1	-	2/6/23/26	0/1/1/1
6	EDO	A	4008	-	-	0/1/1/1	-

Continued on next page...

Continued from previous page...

Mol	Type	Chain	Res	Link	Chirals	Torsions	Rings
5	FLC	A	4004	3	-	4/16/16/16	-
7	4MU	B	4004	2	-	-	0/2/2/2
6	EDO	A	4006	-	-	0/1/1/1	-
6	EDO	A	4007	-	-	0/1/1/1	-
6	EDO	B	4014	-	-	0/1/1/1	-

All (4) bond length outliers are listed below:

Mol	Chain	Res	Type	Atoms	Z	Observed(Å)	Ideal(Å)
4	B	4003	NAG	O5-C1	-5.88	1.34	1.43
5	B	4009	FLC	CB-CBC	-2.35	1.51	1.53
5	A	4004	FLC	CB-CBC	-2.22	1.51	1.53
5	A	4005	FLC	CB-CBC	-2.17	1.51	1.53

All (12) bond angle outliers are listed below:

Mol	Chain	Res	Type	Atoms	Z	Observed(°)	Ideal(°)
4	B	4003	NAG	C1-O5-C5	-5.01	105.40	112.19
5	B	4009	FLC	OB2-CBC-CB	3.28	118.75	113.05
5	A	4004	FLC	OB2-CBC-CB	3.23	118.65	113.05
5	A	4005	FLC	OB2-CBC-CB	3.10	118.43	113.05
5	B	4009	FLC	OB1-CBC-CB	-2.94	118.08	122.25
5	B	4010	FLC	OB2-CBC-CB	2.93	118.14	113.05
5	A	4005	FLC	OB1-CBC-CB	-2.67	118.47	122.25
5	A	4004	FLC	OB1-CBC-CB	-2.59	118.59	122.25
5	A	4005	FLC	CB-CG-CGC	-2.33	108.18	113.81
5	B	4010	FLC	OB1-CBC-CB	-2.28	119.02	122.25
4	A	4003	NAG	C1-O5-C5	2.09	115.02	112.19
7	B	4004	4MU	C2-C3-C4	-2.06	121.33	123.12

There are no chirality outliers.

All (20) torsion outliers are listed below:

Mol	Chain	Res	Type	Atoms
4	A	4003	NAG	O5-C5-C6-O6
4	B	4003	NAG	C4-C5-C6-O6
4	A	4003	NAG	C4-C5-C6-O6
5	A	4004	FLC	CA-CB-CG-CGC
4	B	4003	NAG	O5-C5-C6-O6
5	A	4004	FLC	CBC-CB-CG-CGC
6	B	4013	EDO	O1-C1-C2-O2

Continued on next page...

Continued from previous page...

Mol	Chain	Res	Type	Atoms
5	B	4010	FLC	OHB-CB-CG-CGC
5	B	4010	FLC	OHB-CB-CBC-OB1
5	B	4010	FLC	CA-CB-CBC-OB1
5	B	4010	FLC	CA-CB-CBC-OB2
5	A	4005	FLC	CBC-CB-CG-CGC
5	B	4010	FLC	CG-CB-CBC-OB2
5	A	4005	FLC	CA-CB-CG-CGC
5	A	4005	FLC	OHB-CB-CG-CGC
5	B	4010	FLC	OHB-CB-CBC-OB2
5	B	4010	FLC	CG-CB-CBC-OB1
5	B	4010	FLC	CA-CB-CG-CGC
5	A	4004	FLC	OHB-CB-CG-CGC
5	A	4004	FLC	CB-CA-CAC-OA1

There are no ring outliers.

2 monomers are involved in 3 short contacts:

Mol	Chain	Res	Type	Clashes	Symm-Clashes
5	A	4005	FLC	1	1
4	A	4003	NAG	1	0

5.7 Other polymers [i](#)

There are no such residues in this entry.

5.8 Polymer linkage issues [i](#)

There are no chain breaks in this entry.

6 Fit of model and data [i](#)

6.1 Protein, DNA and RNA chains [i](#)

In the following table, the column labelled ‘#RSRZ > 2’ contains the number (and percentage) of RSRZ outliers, followed by percent RSRZ outliers for the chain as percentile scores relative to all X-ray entries and entries of similar resolution. The OWAB column contains the minimum, median, 95th percentile and maximum values of the occupancy-weighted average B-factor per residue. The column labelled ‘Q < 0.9’ lists the number of (and percentage) of residues with an average occupancy less than 0.9.

Mol	Chain	Analysed	<RSRZ>	#RSRZ>2	OWAB(Å ²)	Q<0.9
1	A	381/381 (100%)	0.29	7 (1%) 68 66	27, 44, 71, 100	0
1	B	378/381 (99%)	0.21	6 (1%) 72 70	30, 48, 78, 104	0
All	All	759/762 (99%)	0.25	13 (1%) 70 68	27, 45, 75, 104	0

All (13) RSRZ outliers are listed below:

Mol	Chain	Res	Type	RSRZ
1	A	2893	ARG	3.6
1	B	2741	ALA	3.3
1	B	2742	MET	2.9
1	A	2851	VAL	2.7
1	A	2874	ILE	2.3
1	A	2820	TYR	2.3
1	B	3118	THR	2.2
1	A	2806	HIS	2.1
1	B	2890	TYR	2.1
1	B	2774	PHE	2.1
1	A	2747	CYS	2.1
1	A	3017	CYS	2.0
1	B	2915	PRO	2.0

6.2 Non-standard residues in protein, DNA, RNA chains [i](#)

There are no non-standard protein/DNA/RNA residues in this entry.

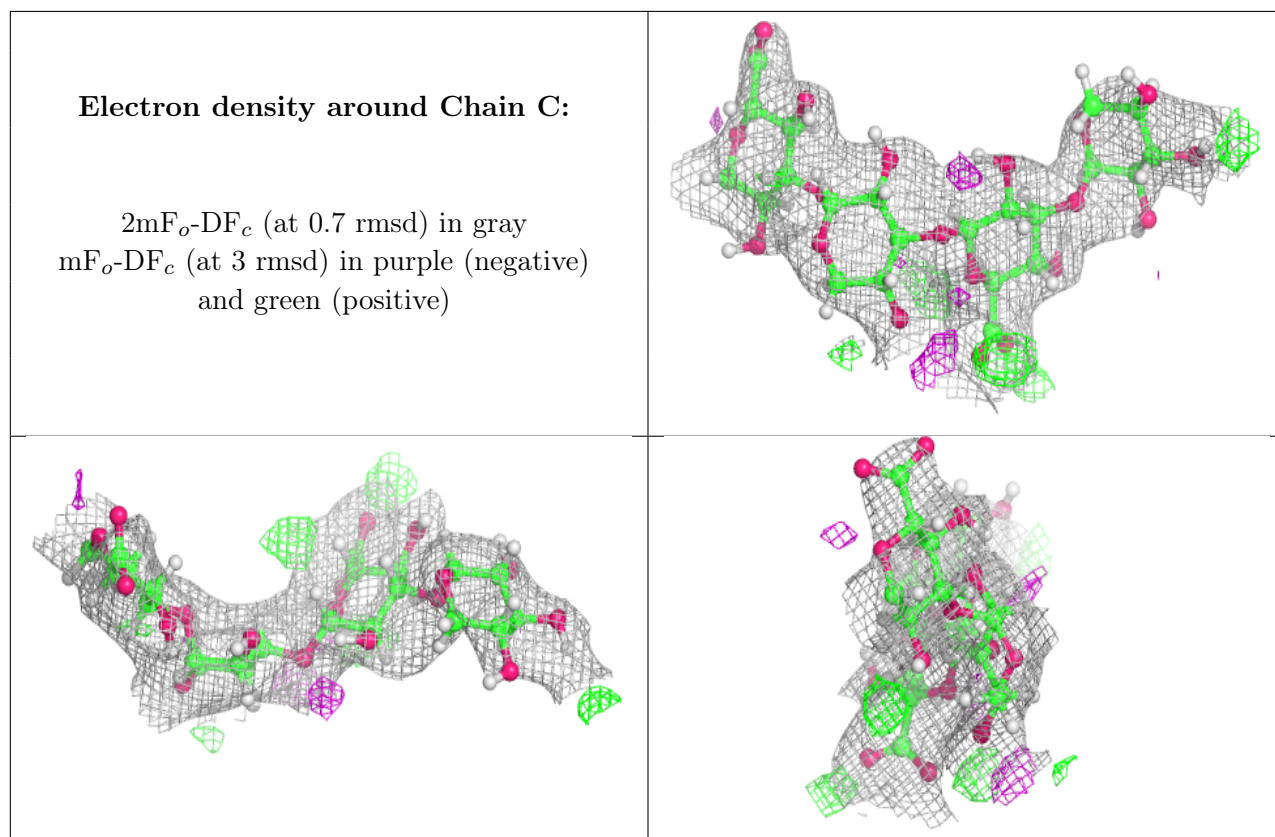
6.3 Carbohydrates [i](#)

In the following table, the Atoms column lists the number of modelled atoms in the group and the number defined in the chemical component dictionary. The B-factors column lists the minimum,

median, 95th percentile and maximum values of B factors of atoms in the group. The column labelled 'Q< 0.9' lists the number of atoms with occupancy less than 0.9.

Mol	Type	Chain	Res	Atoms	RSCC	RSR	B-factors(Å ²)	Q<0.9
2	XYS	C	4	9/10	0.81	0.24	107,122,147,147	0
2	BDP	C	1	12/13	0.82	0.24	81,103,120,125	0
2	BDP	C	3	12/13	0.86	0.14	78,82,98,101	0
2	XYS	C	2	9/10	0.86	0.12	73,80,96,97	0

The following is a graphical depiction of the model fit to experimental electron density for oligosaccharide. Each fit is shown from different orientation to approximate a three-dimensional view.



6.4 Ligands [i](#)

In the following table, the Atoms column lists the number of modelled atoms in the group and the number defined in the chemical component dictionary. The B-factors column lists the minimum, median, 95th percentile and maximum values of B factors of atoms in the group. The column labelled 'Q< 0.9' lists the number of atoms with occupancy less than 0.9.

Mol	Type	Chain	Res	Atoms	RSCC	RSR	B-factors(Å ²)	Q<0.9
4	NAG	B	4003	14/15	0.40	0.34	80,126,156,161	0
6	EDO	A	4007	4/4	0.43	0.36	63,76,85,85	0
3	CA	B	4001	1/1	0.67	0.09	57,57,57,57	0

Continued on next page...

Continued from previous page...

Mol	Type	Chain	Res	Atoms	RSCC	RSR	B-factors(\AA^2)	Q<0.9
5	FLC	A	4005	13/13	0.69	0.60	126,137,163,165	0
6	EDO	A	4006	4/4	0.74	0.20	86,103,105,105	0
4	NAG	A	4003	14/15	0.77	0.35	96,112,131,134	0
6	EDO	B	4014	4/4	0.78	0.28	73,88,95,95	0
6	EDO	A	4010	4/4	0.83	0.61	97,120,138,144	0
7	4MU	B	4004	13/13	0.84	0.24	104,119,143,143	0
5	FLC	B	4010	13/13	0.85	0.17	53,69,89,89	0
6	EDO	B	4011	4/4	0.85	0.28	60,72,75,83	0
6	EDO	B	4013	4/4	0.87	0.28	50,60,70,74	0
6	EDO	A	4009	4/4	0.88	0.26	71,86,88,89	0
5	FLC	A	4004	13/13	0.89	0.17	56,82,99,99	0
6	EDO	B	4012	4/4	0.91	0.26	70,84,89,89	0
3	CA	A	4001	1/1	0.92	0.10	108,108,108,108	0
5	FLC	B	4009	13/13	0.94	0.15	48,55,66,67	18
6	EDO	A	4008	4/4	0.96	0.42	79,95,96,99	0
3	CA	A	4002	1/1	0.98	0.09	41,41,41,41	0
3	CA	B	4002	1/1	0.98	0.06	44,44,44,44	0

6.5 Other polymers [i](#)

There are no such residues in this entry.