



# Full wwPDB X-ray Structure Validation Report ⓘ

Jan 3, 2024 – 03:23 pm GMT

PDB ID : 5IK7  
Title : Laminin A2LG45 I-form, Apo.  
Authors : Briggs, D.C.; Hohenester, E.; Campbell, K.P.  
Deposited on : 2016-03-03  
Resolution : 2.00 Å(reported)

This is a Full wwPDB X-ray Structure Validation Report for a publicly released PDB entry.

We welcome your comments at [validation@mail.wwpdb.org](mailto:validation@mail.wwpdb.org)

A user guide is available at

<https://www.wwpdb.org/validation/2017/XrayValidationReportHelp>

with specific help available everywhere you see the ⓘ symbol.

The types of validation reports are described at

<http://www.wwpdb.org/validation/2017/FAQs#types>.

---

The following versions of software and data (see [references ⓘ](#)) were used in the production of this report:

MolProbity : 4.02b-467  
Mogul : 1.8.4, CSD as541be (2020)  
Xtriage (Phenix) : 1.13  
EDS : 2.36  
Percentile statistics : 20191225.v01 (using entries in the PDB archive December 25th 2019)  
Refmac : 5.8.0158  
CCP4 : 7.0.044 (Gargrove)  
Ideal geometry (proteins) : Engh & Huber (2001)  
Ideal geometry (DNA, RNA) : Parkinson et al. (1996)  
Validation Pipeline (wwPDB-VP) : 2.36

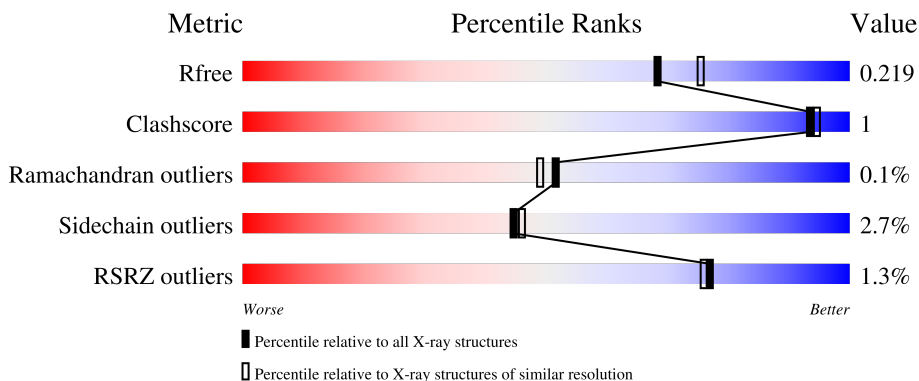
# 1 Overall quality at a glance

The following experimental techniques were used to determine the structure:

*X-RAY DIFFRACTION*

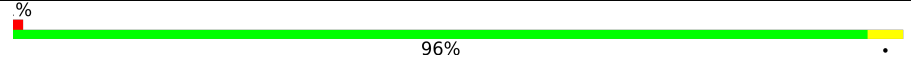
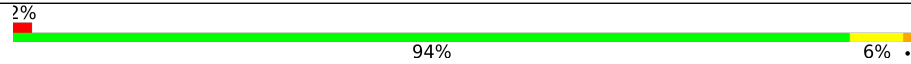
The reported resolution of this entry is 2.00 Å.

Percentile scores (ranging between 0-100) for global validation metrics of the entry are shown in the following graphic. The table shows the number of entries on which the scores are based.



Metric	Whole archive (#Entries)	Similar resolution (#Entries, resolution range(Å))
$R_{free}$	130704	8085 (2.00-2.00)
Clashscore	141614	9178 (2.00-2.00)
Ramachandran outliers	138981	9054 (2.00-2.00)
Sidechain outliers	138945	9053 (2.00-2.00)
RSRZ outliers	127900	7900 (2.00-2.00)

The table below summarises the geometric issues observed across the polymeric chains and their fit to the electron density. The red, orange, yellow and green segments of the lower bar indicate the fraction of residues that contain outliers for  $\geq 3$ , 2, 1 and 0 types of geometric quality criteria respectively. A grey segment represents the fraction of residues that are not modelled. The numeric value for each fraction is indicated below the corresponding segment, with a dot representing fractions  $\leq 5\%$ . The upper red bar (where present) indicates the fraction of residues that have poor fit to the electron density. The numeric value is given above the bar.

Mol	Chain	Length	Quality of chain
1	A	381	 96% .
1	B	381	 94% 6% .

The following table lists non-polymeric compounds, carbohydrate monomers and non-standard residues in protein, DNA, RNA chains that are outliers for geometric or electron-density-fit criteria:

Mol	Type	Chain	Res	Chirality	Geometry	Clashes	Electron density
3	FLC	A	4004	-	-	-	X
4	NAG	A	4005	-	-	-	X

## 2 Entry composition [i](#)

There are 6 unique types of molecules in this entry. The entry contains 12145 atoms, of which 5797 are hydrogens and 0 are deuteriums.

In the tables below, the ZeroOcc column contains the number of atoms modelled with zero occupancy, the AltConf column contains the number of residues with at least one atom in alternate conformation and the Trace column contains the number of residues modelled with at most 2 atoms.

- Molecule 1 is a protein called Laminin subunit alpha-2.

Mol	Chain	Residues	Atoms					ZeroOcc	AltConf	Trace	
			Total	C	H	N	O				S
1	A	381	5825	1846	2902	505	555	17	0	4	0
1	B	380	5702	1818	2825	493	552	14	0	1	0

There are 10 discrepancies between the modelled and reference sequences:

Chain	Residue	Modelled	Actual	Comment	Reference
A	2738	ALA	-	expression tag	UNP Q60675
A	2739	PRO	-	expression tag	UNP Q60675
A	2740	LEU	-	expression tag	UNP Q60675
A	2741	ALA	-	expression tag	UNP Q60675
A	3011	GLU	GLY	conflict	UNP Q60675
B	2738	ALA	-	expression tag	UNP Q60675
B	2739	PRO	-	expression tag	UNP Q60675
B	2740	LEU	-	expression tag	UNP Q60675
B	2741	ALA	-	expression tag	UNP Q60675
B	3011	GLU	GLY	conflict	UNP Q60675

- Molecule 2 is CALCIUM ION (three-letter code: CA) (formula: Ca).

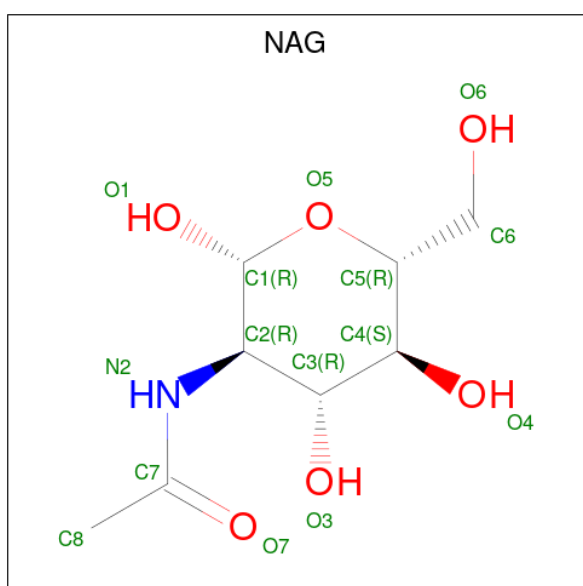
Mol	Chain	Residues	Atoms		ZeroOcc	AltConf
2	A	2	Total	Ca	0	0
			2	2		
2	B	2	Total	Ca	0	0
			2	2		

- Molecule 3 is CITRATE ANION (three-letter code: FLC) (formula: C<sub>6</sub>H<sub>5</sub>O<sub>7</sub>).



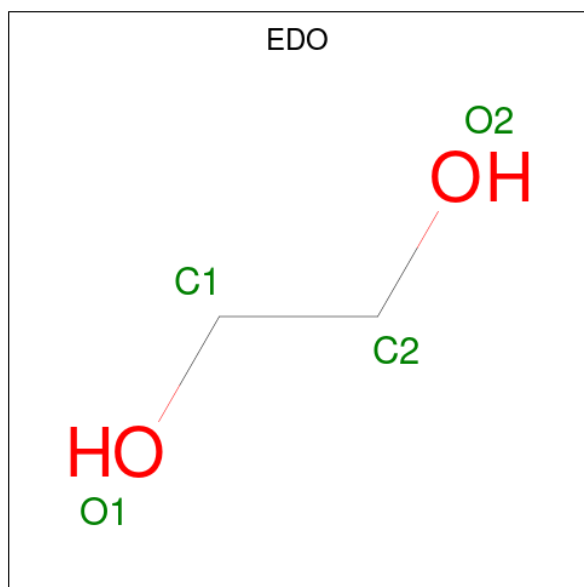
Mol	Chain	Residues	Atoms				ZeroOcc	AltConf
			Total	C	H	O		
3	A	1	Total	C	H	O	0	0
			18	6	5	7		
3	A	1	Total	C	H	O	0	0
			18	6	5	7		
3	A	1	Total	C	H	O	0	0
			18	6	5	7		
3	B	1	Total	C	H	O	0	0
			18	6	5	7		

- Molecule 4 is 2-acetamido-2-deoxy-beta-D-glucopyranose (three-letter code: NAG) (formula:  $C_8H_{15}NO_6$ ).



Mol	Chain	Residues	Atoms				ZeroOcc	AltConf	
4	A	1	Total	C	H	N	O	0	0
			27	8	13	1	5		
4	B	1	Total	C	H	N	O	0	0
			27	8	13	1	5		

- Molecule 5 is 1,2-ETHANEDIOL (three-letter code: EDO) (formula: C<sub>2</sub>H<sub>6</sub>O<sub>2</sub>).



Mol	Chain	Residues	Atoms				ZeroOcc	AltConf
5	A	1	Total	C	H	O	0	0
			10	2	6	2		
5	B	1	Total	C	H	O	0	0
			10	2	6	2		
5	B	1	Total	C	H	O	0	0
			10	2	6	2		
5	B	1	Total	C	H	O	0	0
			10	2	6	2		

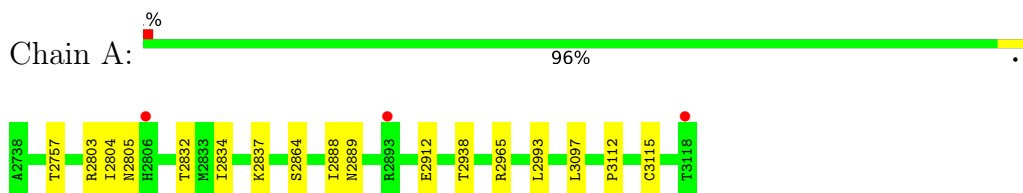
- Molecule 6 is water.

Mol	Chain	Residues	Atoms		ZeroOcc	AltConf
6	A	257	Total	O	0	0
			257	257		
6	B	191	Total	O	0	0
			191	191		

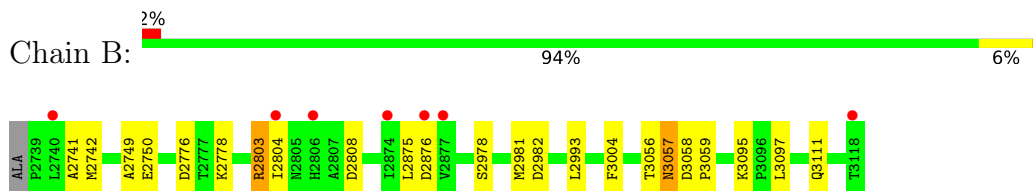
### 3 Residue-property plots [i](#)

These plots are drawn for all protein, RNA, DNA and oligosaccharide chains in the entry. The first graphic for a chain summarises the proportions of the various outlier classes displayed in the second graphic. The second graphic shows the sequence view annotated by issues in geometry and electron density. Residues are color-coded according to the number of geometric quality criteria for which they contain at least one outlier: green = 0, yellow = 1, orange = 2 and red = 3 or more. A red dot above a residue indicates a poor fit to the electron density ( $RSRZ > 2$ ). Stretches of 2 or more consecutive residues without any outlier are shown as a green connector. Residues present in the sample, but not in the model, are shown in grey.

- Molecule 1: Laminin subunit alpha-2



- Molecule 1: Laminin subunit alpha-2



## 4 Data and refinement statistics

Property	Value	Source
Space group	I 21 21 21	Depositor
Cell constants a, b, c, $\alpha$ , $\beta$ , $\gamma$	112.07Å 129.08Å 147.05Å 90.00° 90.00° 90.00°	Depositor
Resolution (Å)	89.10 – 2.00 89.13 – 1.90	Depositor EDS
% Data completeness (in resolution range)	94.4 (89.10-2.00) 85.4 (89.13-1.90)	Depositor EDS
$R_{merge}$	0.13	Depositor
$R_{sym}$	(Not available)	Depositor
$\langle I/\sigma(I) \rangle$ <sup>1</sup>	0.44 (at 1.90Å)	Xtrriage
Refinement program	PHENIX (1.10.1_2155: ???)	Depositor
R, $R_{free}$	0.188 , 0.219 0.189 , 0.219	Depositor DCC
$R_{free}$ test set	4010 reflections (5.03%)	wwPDB-VP
Wilson B-factor (Å <sup>2</sup> )	33.1	Xtrriage
Anisotropy	0.543	Xtrriage
Bulk solvent $k_{sol}$ (e/Å <sup>3</sup> ), $B_{sol}$ (Å <sup>2</sup> )	0.36 , 51.9	EDS
L-test for twinning <sup>2</sup>	$\langle  L  \rangle = 0.48$ , $\langle L^2 \rangle = 0.31$	Xtrriage
Estimated twinning fraction	No twinning to report.	Xtrriage
$F_o, F_c$ correlation	0.97	EDS
Total number of atoms	12145	wwPDB-VP
Average B, all atoms (Å <sup>2</sup> )	60.0	wwPDB-VP

Xtrriage's analysis on translational NCS is as follows: *The largest off-origin peak in the Patterson function is 4.46% of the height of the origin peak. No significant pseudotranslation is detected.*

<sup>1</sup>Intensities estimated from amplitudes.

<sup>2</sup>Theoretical values of  $\langle |L| \rangle$ ,  $\langle L^2 \rangle$  for acentric reflections are 0.5, 0.333 respectively for untwinned datasets, and 0.375, 0.2 for perfectly twinned datasets.



## 5 Model quality [i](#)

### 5.1 Standard geometry [i](#)

Bond lengths and bond angles in the following residue types are not validated in this section: NAG, FLC, EDO, CA

The Z score for a bond length (or angle) is the number of standard deviations the observed value is removed from the expected value. A bond length (or angle) with  $|Z| > 5$  is considered an outlier worth inspection. RMSZ is the root-mean-square of all Z scores of the bond lengths (or angles).

Mol	Chain	Bond lengths		Bond angles	
		RMSZ	# Z  >5	RMSZ	# Z  >5
1	A	0.25	0/2995	0.50	0/4056
1	B	0.25	0/2938	0.49	0/3984
All	All	0.25	0/5933	0.49	0/8040

There are no bond length outliers.

There are no bond angle outliers.

There are no chirality outliers.

There are no planarity outliers.

### 5.2 Too-close contacts [i](#)

In the following table, the Non-H and H(model) columns list the number of non-hydrogen atoms and hydrogen atoms in the chain respectively. The H(added) column lists the number of hydrogen atoms added and optimized by MolProbity. The Clashes column lists the number of clashes within the asymmetric unit, whereas Symm-Clashes lists symmetry-related clashes.

Mol	Chain	Non-H	H(model)	H(added)	Clashes	Symm-Clashes
1	A	2923	2902	2893	8	0
1	B	2877	2825	2826	7	0
2	A	2	0	0	0	0
2	B	2	0	0	0	0
3	A	39	15	14	0	0
3	B	13	5	5	0	0
4	A	14	13	13	3	0
4	B	14	13	13	0	0
5	A	4	6	6	0	0
5	B	12	18	18	0	0
6	A	257	0	0	1	4

*Continued on next page...*

Continued from previous page...

Mol	Chain	Non-H	H(model)	H(added)	Clashes	Symm-Clashes
6	B	191	0	0	0	4
All	All	6348	5797	5788	16	4

The all-atom clashscore is defined as the number of clashes found per 1000 atoms (including hydrogen atoms). The all-atom clashscore for this structure is 1.

All (16) close contacts within the same asymmetric unit are listed below, sorted by their clash magnitude.

Atom-1	Atom-2	Interatomic distance (Å)	Clash overlap (Å)
1:A:2832:THR:OG1	1:A:2864:SER:OG	2.07	0.72
1:A:2965:ARG:NH2	1:A:3115[A]:CYS:SG	2.65	0.69
1:A:2837:LYS:NZ	6:A:4104:HOH:O	2.33	0.61
1:A:2889:ASN:OD1	4:A:4005:NAG:O5	2.20	0.55
1:B:2742:MET:O	1:B:2750:GLU:N	2.33	0.51
4:A:4005:NAG:O7	4:A:4005:NAG:C1	2.59	0.51
1:A:2803:ARG:NH1	1:A:2805:ASN:OD1	2.46	0.48
1:B:2981:MET:O	1:B:2982:ASP:HB2	2.16	0.46
1:B:3056:THR:O	1:B:3057:ASN:HB2	2.16	0.45
1:B:3058:ASP:HB3	1:B:3059:PRO:CD	2.48	0.44
1:B:2776:ASP:N	1:B:2776:ASP:OD1	2.51	0.43
1:A:2889:ASN:ND2	4:A:4005:NAG:O7	2.51	0.43
1:A:2888:ILE:HG22	1:A:2889:ASN:OD1	2.21	0.41
1:B:2741:ALA:HB1	1:B:2749:ALA:HB1	2.03	0.40
1:B:2803:ARG:HD2	1:B:2876:ASP:O	2.21	0.40
1:A:2938:THR:HG23	1:A:3112:PRO:HA	2.04	0.40

All (4) symmetry-related close contacts are listed below. The label for Atom-2 includes the symmetry operator and encoded unit-cell translations to be applied.

Atom-1	Atom-2	Interatomic distance (Å)	Clash overlap (Å)
6:A:4146:HOH:O	6:B:4233:HOH:O[4_555]	2.02	0.18
6:A:4284:HOH:O	6:B:4228:HOH:O[6_555]	2.06	0.14
6:A:4245:HOH:O	6:B:4282:HOH:O[6_555]	2.14	0.06
6:A:4146:HOH:O	6:B:4170:HOH:O[4_555]	2.19	0.01

## 5.3 Torsion angles [i](#)

### 5.3.1 Protein backbone [i](#)

In the following table, the Percentiles column shows the percent Ramachandran outliers of the chain as a percentile score with respect to all X-ray entries followed by that with respect to entries of similar resolution.

The Analysed column shows the number of residues for which the backbone conformation was analysed, and the total number of residues.

Mol	Chain	Analysed	Favoured	Allowed	Outliers	Percentiles	
1	A	383/381 (100%)	370 (97%)	13 (3%)	0	100	100
1	B	379/381 (100%)	358 (94%)	20 (5%)	1 (0%)	41	37
All	All	762/762 (100%)	728 (96%)	33 (4%)	1 (0%)	51	49

All (1) Ramachandran outliers are listed below:

Mol	Chain	Res	Type
1	B	3057	ASN

### 5.3.2 Protein sidechains [i](#)

In the following table, the Percentiles column shows the percent sidechain outliers of the chain as a percentile score with respect to all X-ray entries followed by that with respect to entries of similar resolution.

The Analysed column shows the number of residues for which the sidechain conformation was analysed, and the total number of residues.

Mol	Chain	Analysed	Rotameric	Outliers	Percentiles	
1	A	320/316 (101%)	314 (98%)	6 (2%)	57	61
1	B	310/316 (98%)	299 (96%)	11 (4%)	36	35
All	All	630/632 (100%)	613 (97%)	17 (3%)	44	46

All (17) residues with a non-rotameric sidechain are listed below:

Mol	Chain	Res	Type
1	A	2757	THR
1	A	2804	ILE
1	A	2834	ILE
1	A	2912	GLU
1	A	2993	LEU

*Continued on next page...*

*Continued from previous page...*

Mol	Chain	Res	Type
1	A	3097	LEU
1	B	2778	LYS
1	B	2803	ARG
1	B	2804	ILE
1	B	2808	ASP
1	B	2875	LEU
1	B	2978	SER
1	B	2993	LEU
1	B	3004	PHE
1	B	3095	LYS
1	B	3097	LEU
1	B	3111	GLN

Sometimes sidechains can be flipped to improve hydrogen bonding and reduce clashes. All (1) such sidechains are listed below:

Mol	Chain	Res	Type
1	A	2806	HIS

### 5.3.3 RNA [i](#)

There are no RNA molecules in this entry.

## 5.4 Non-standard residues in protein, DNA, RNA chains [i](#)

There are no non-standard protein/DNA/RNA residues in this entry.

## 5.5 Carbohydrates [i](#)

There are no monosaccharides in this entry.

## 5.6 Ligand geometry [i](#)

Of 14 ligands modelled in this entry, 4 are monoatomic - leaving 10 for Mogul analysis.

In the following table, the Counts columns list the number of bonds (or angles) for which Mogul statistics could be retrieved, the number of bonds (or angles) that are observed in the model and the number of bonds (or angles) that are defined in the Chemical Component Dictionary. The Link column lists molecule types, if any, to which the group is linked. The Z score for a bond length (or angle) is the number of standard deviations the observed value is removed from the

expected value. A bond length (or angle) with  $|Z| > 2$  is considered an outlier worth inspection. RMSZ is the root-mean-square of all Z scores of the bond lengths (or angles).

Mol	Type	Chain	Res	Link	Bond lengths			Bond angles		
					Counts	RMSZ	# $ Z  > 2$	Counts	RMSZ	# $ Z  > 2$
5	EDO	B	4006	-	3,3,3	0.45	0	2,2,2	0.35	0
3	FLC	B	4003	2	12,12,12	1.13	1 (8%)	17,17,17	1.22	2 (11%)
3	FLC	A	4007	2	12,12,12	1.15	1 (8%)	17,17,17	1.34	2 (11%)
5	EDO	B	4005	-	3,3,3	0.46	0	2,2,2	0.35	0
3	FLC	A	4004	-	12,12,12	1.12	0	17,17,17	1.34	2 (11%)
4	NAG	A	4005	1	14,14,15	0.45	0	17,19,21	1.09	2 (11%)
4	NAG	B	4004	1	14,14,15	0.50	0	17,19,21	0.53	0
3	FLC	A	4003	2	12,12,12	1.18	1 (8%)	17,17,17	1.31	2 (11%)
5	EDO	A	4006	-	3,3,3	0.48	0	2,2,2	0.27	0
5	EDO	B	4007	-	3,3,3	0.45	0	2,2,2	0.32	0

In the following table, the Chirals column lists the number of chiral outliers, the number of chiral centers analysed, the number of these observed in the model and the number defined in the Chemical Component Dictionary. Similar counts are reported in the Torsion and Rings columns. '-' means no outliers of that kind were identified.

Mol	Type	Chain	Res	Link	Chirals	Torsions	Rings
5	EDO	B	4006	-	-	1/1/1/1	-
3	FLC	B	4003	2	-	7/16/16/16	-
3	FLC	A	4007	2	-	4/16/16/16	-
5	EDO	B	4005	-	-	0/1/1/1	-
3	FLC	A	4004	-	-	2/16/16/16	-
4	NAG	A	4005	1	-	1/6/23/26	0/1/1/1
4	NAG	B	4004	1	-	0/6/23/26	0/1/1/1
3	FLC	A	4003	2	-	5/16/16/16	-
5	EDO	A	4006	-	-	1/1/1/1	-
5	EDO	B	4007	-	-	1/1/1/1	-

All (3) bond length outliers are listed below:

Mol	Chain	Res	Type	Atoms	Z	Observed(Å)	Ideal(Å)
3	A	4003	FLC	CB-CBC	-2.36	1.51	1.53
3	A	4007	FLC	CB-CBC	-2.21	1.51	1.53
3	B	4003	FLC	CB-CBC	-2.04	1.51	1.53

All (10) bond angle outliers are listed below:

Mol	Chain	Res	Type	Atoms	Z	Observed(°)	Ideal(°)
3	A	4007	FLC	OB2-CBC-CB	3.23	118.66	113.05
3	A	4004	FLC	OB2-CBC-CB	3.15	118.52	113.05
3	A	4003	FLC	OB2-CBC-CB	3.02	118.30	113.05
3	B	4003	FLC	OB2-CBC-CB	2.91	118.11	113.05
3	A	4007	FLC	OB1-CBC-CB	-2.71	118.42	122.25
4	A	4005	NAG	C1-O5-C5	2.70	115.85	112.19
3	A	4004	FLC	OB1-CBC-CB	-2.55	118.64	122.25
3	A	4003	FLC	OB1-CBC-CB	-2.47	118.76	122.25
4	A	4005	NAG	C2-N2-C7	2.42	126.34	122.90
3	B	4003	FLC	OB1-CBC-CB	-2.29	119.01	122.25

There are no chirality outliers.

All (22) torsion outliers are listed below:

Mol	Chain	Res	Type	Atoms
3	A	4003	FLC	CA-CB-CG-CGC
3	A	4003	FLC	CBC-CB-CG-CGC
4	A	4005	NAG	C1-C2-N2-C7
3	B	4003	FLC	CG-CB-CBC-OB2
3	A	4003	FLC	OHB-CB-CG-CGC
3	A	4004	FLC	CB-CG-CGC-OG2
3	B	4003	FLC	OHB-CB-CBC-OB1
3	A	4007	FLC	CG-CB-CBC-OB1
3	B	4003	FLC	CA-CB-CBC-OB1
3	B	4003	FLC	CA-CB-CBC-OB2
3	A	4004	FLC	CB-CG-CGC-OG1
3	B	4003	FLC	OHB-CB-CG-CGC
3	A	4007	FLC	CG-CB-CBC-OB2
3	B	4003	FLC	OHB-CB-CBC-OB2
3	A	4007	FLC	CA-CB-CBC-OB1
3	A	4007	FLC	CA-CB-CBC-OB2
3	B	4003	FLC	CG-CB-CBC-OB1
5	B	4006	EDO	O1-C1-C2-O2
5	A	4006	EDO	O1-C1-C2-O2
5	B	4007	EDO	O1-C1-C2-O2
3	A	4003	FLC	CB-CA-CAC-OA1
3	A	4003	FLC	CB-CA-CAC-OA2

There are no ring outliers.

1 monomer is involved in 3 short contacts:

Mol	Chain	Res	Type	Clashes	Symm-Clashes
4	A	4005	NAG	3	0

## 5.7 Other polymers [i](#)

There are no such residues in this entry.

## 5.8 Polymer linkage issues [i](#)

There are no chain breaks in this entry.

## 6 Fit of model and data [i](#)

### 6.1 Protein, DNA and RNA chains [i](#)

In the following table, the column labelled '#RSRZ > 2' contains the number (and percentage) of RSRZ outliers, followed by percent RSRZ outliers for the chain as percentile scores relative to all X-ray entries and entries of similar resolution. The OWAB column contains the minimum, median, 95<sup>th</sup> percentile and maximum values of the occupancy-weighted average B-factor per residue. The column labelled 'Q < 0.9' lists the number of (and percentage) of residues with an average occupancy less than 0.9.

Mol	Chain	Analysed	<RSRZ>	#RSRZ>2	OWAB(Å <sup>2</sup> )	Q<0.9
1	A	381/381 (100%)	-0.07	3 (0%) 86 85	25, 45, 73, 135	0
1	B	380/381 (99%)	0.06	7 (1%) 68 66	30, 58, 94, 127	0
All	All	761/762 (99%)	-0.00	10 (1%) 77 76	25, 50, 89, 135	0

All (10) RSRZ outliers are listed below:

Mol	Chain	Res	Type	RSRZ
1	A	2893	ARG	5.0
1	B	2804	ILE	4.4
1	B	3118	THR	4.1
1	A	3118	THR	3.8
1	B	2740	LEU	3.5
1	B	2876	ASP	2.9
1	B	2874	ILE	2.6
1	B	2806	HIS	2.2
1	A	2806	HIS	2.2
1	B	2877	VAL	2.1

### 6.2 Non-standard residues in protein, DNA, RNA chains [i](#)

There are no non-standard protein/DNA/RNA residues in this entry.

### 6.3 Carbohydrates [i](#)

There are no monosaccharides in this entry.



## 6.4 Ligands [i](#)

In the following table, the Atoms column lists the number of modelled atoms in the group and the number defined in the chemical component dictionary. The B-factors column lists the minimum, median, 95<sup>th</sup> percentile and maximum values of B factors of atoms in the group. The column labelled 'Q<0.9' lists the number of atoms with occupancy less than 0.9.

Mol	Type	Chain	Res	Atoms	RSCC	RSR	B-factors(Å <sup>2</sup> )	Q<0.9
2	CA	A	4001	1/1	0.35	0.18	101,101,101,101	0
3	FLC	A	4004	13/13	0.55	0.55	87,98,116,120	0
4	NAG	A	4005	14/15	0.60	0.42	104,123,148,149	0
5	EDO	A	4006	4/4	0.62	0.19	60,72,81,86	0
3	FLC	B	4003	13/13	0.66	0.31	84,99,124,124	0
4	NAG	B	4004	14/15	0.67	0.34	109,127,146,152	0
5	EDO	B	4005	4/4	0.69	0.21	67,81,82,91	0
2	CA	B	4001	1/1	0.70	0.23	126,126,126,126	0
5	EDO	B	4006	4/4	0.74	0.31	56,76,91,92	0
3	FLC	A	4003	13/13	0.82	0.20	74,95,114,114	0
3	FLC	A	4007	13/13	0.84	0.23	83,84,101,103	18
5	EDO	B	4007	4/4	0.87	0.41	99,119,122,125	0
2	CA	B	4002	1/1	0.88	0.09	62,62,62,62	0
2	CA	A	4002	1/1	0.97	0.15	55,55,55,55	0

## 6.5 Other polymers [i](#)

There are no such residues in this entry.