



# Full wwPDB X-ray Structure Validation Report ⓘ

Sep 20, 2023 – 02:49 PM EDT

PDB ID : 5FI2  
Title : Crystal structure of human GAC in complex with inhibitor UPGL\_00009: 2-phenyl- {N}-[5-[[{(3 {R})-1-[5-(2-phenylethanoylamino)-1,3,4-thiadiazol- 2-yl]pyrrolidin-3-yl]amino]-1,3,4-thiadiazol-2-yl]ethanamide  
Authors : Huang, Q.; Cerione, R.  
Deposited on : 2015-12-22  
Resolution : 2.50 Å(reported)

This is a Full wwPDB X-ray Structure Validation Report for a publicly released PDB entry.

We welcome your comments at [validation@mail.wwpdb.org](mailto:validation@mail.wwpdb.org)

A user guide is available at

<https://www.wwpdb.org/validation/2017/XrayValidationReportHelp>

with specific help available everywhere you see the ⓘ symbol.

The types of validation reports are described at

<http://www.wwpdb.org/validation/2017/FAQs#types>.

---

The following versions of software and data (see [references ⓘ](#)) were used in the production of this report:

MolProbity : 4.02b-467  
Mogul : 1.8.5 (274361), CSD as541be (2020)  
Xtriage (Phenix) : 1.13  
EDS : 2.35.1  
buster-report : 1.1.7 (2018)  
Percentile statistics : 20191225.v01 (using entries in the PDB archive December 25th 2019)  
Refmac : 5.8.0158  
CCP4 : 7.0.044 (Gargrove)  
Ideal geometry (proteins) : Engh & Huber (2001)  
Ideal geometry (DNA, RNA) : Parkinson et al. (1996)  
Validation Pipeline (wwPDB-VP) : 2.35.1

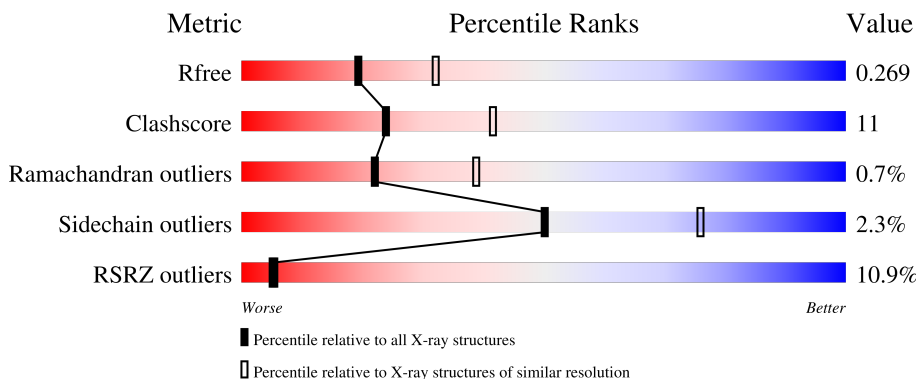
# 1 Overall quality at a glance

The following experimental techniques were used to determine the structure:

*X-RAY DIFFRACTION*

The reported resolution of this entry is 2.50 Å.

Percentile scores (ranging between 0-100) for global validation metrics of the entry are shown in the following graphic. The table shows the number of entries on which the scores are based.



Metric	Whole archive (#Entries)	Similar resolution (#Entries, resolution range(Å))
$R_{free}$	130704	4661 (2.50-2.50)
Clashscore	141614	5346 (2.50-2.50)
Ramachandran outliers	138981	5231 (2.50-2.50)
Sidechain outliers	138945	5233 (2.50-2.50)
RSRZ outliers	127900	4559 (2.50-2.50)

The table below summarises the geometric issues observed across the polymeric chains and their fit to the electron density. The red, orange, yellow and green segments of the lower bar indicate the fraction of residues that contain outliers for  $\geq 3$ , 2, 1 and 0 types of geometric quality criteria respectively. A grey segment represents the fraction of residues that are not modelled. The numeric value for each fraction is indicated below the corresponding segment, with a dot representing fractions  $\leq 5\%$ . The upper red bar (where present) indicates the fraction of residues that have poor fit to the electron density. The numeric value is given above the bar.

Mol	Chain	Length	Quality of chain
1	A	539	
1	B	539	
1	C	539	
1	D	539	

## 2 Entry composition [i](#)

There are 3 unique types of molecules in this entry. The entry contains 13548 atoms, of which 0 are hydrogens and 0 are deuteriums.

In the tables below, the ZeroOcc column contains the number of atoms modelled with zero occupancy, the AltConf column contains the number of residues with at least one atom in alternate conformation and the Trace column contains the number of residues modelled with at most 2 atoms.

- Molecule 1 is a protein called Glutaminase kidney isoform, mitochondrial.

Mol	Chain	Residues	Atoms					ZeroOcc	AltConf	Trace
			Total	C	N	O	S			
1	A	410	3194	2036	540	590	28	1	0	0
1	B	410	3194	2036	540	590	28	1	0	0
1	C	410	3194	2036	540	590	28	1	0	0
1	D	410	3194	2036	540	590	28	1	0	0

There are 48 discrepancies between the modelled and reference sequences:

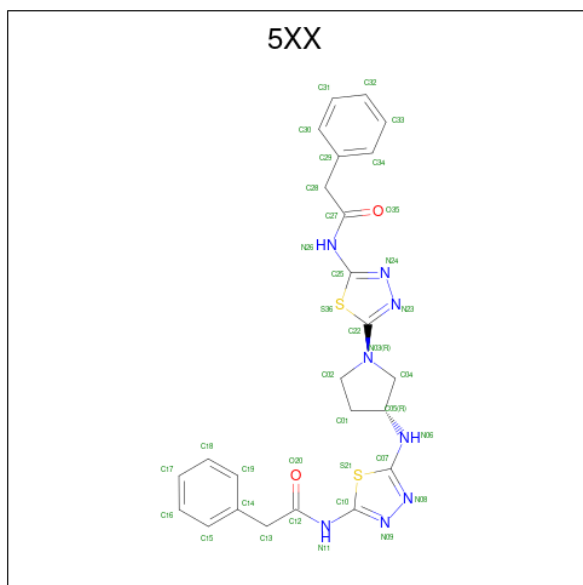
Chain	Residue	Modelled	Actual	Comment	Reference
A	59	MET	-	initiating methionine	UNP O94925
A	60	ARG	-	expression tag	UNP O94925
A	61	GLY	-	expression tag	UNP O94925
A	62	SER	-	expression tag	UNP O94925
A	63	HIS	-	expression tag	UNP O94925
A	64	HIS	-	expression tag	UNP O94925
A	65	HIS	-	expression tag	UNP O94925
A	66	HIS	-	expression tag	UNP O94925
A	67	HIS	-	expression tag	UNP O94925
A	68	HIS	-	expression tag	UNP O94925
A	69	GLY	-	expression tag	UNP O94925
A	70	SER	-	expression tag	UNP O94925
B	59	MET	-	initiating methionine	UNP O94925
B	60	ARG	-	expression tag	UNP O94925
B	61	GLY	-	expression tag	UNP O94925
B	62	SER	-	expression tag	UNP O94925
B	63	HIS	-	expression tag	UNP O94925
B	64	HIS	-	expression tag	UNP O94925
B	65	HIS	-	expression tag	UNP O94925
B	66	HIS	-	expression tag	UNP O94925
B	67	HIS	-	expression tag	UNP O94925

*Continued on next page...*

*Continued from previous page...*

Chain	Residue	Modelled	Actual	Comment	Reference
B	68	HIS	-	expression tag	UNP O94925
B	69	GLY	-	expression tag	UNP O94925
B	70	SER	-	expression tag	UNP O94925
C	59	MET	-	initiating methionine	UNP O94925
C	60	ARG	-	expression tag	UNP O94925
C	61	GLY	-	expression tag	UNP O94925
C	62	SER	-	expression tag	UNP O94925
C	63	HIS	-	expression tag	UNP O94925
C	64	HIS	-	expression tag	UNP O94925
C	65	HIS	-	expression tag	UNP O94925
C	66	HIS	-	expression tag	UNP O94925
C	67	HIS	-	expression tag	UNP O94925
C	68	HIS	-	expression tag	UNP O94925
C	69	GLY	-	expression tag	UNP O94925
C	70	SER	-	expression tag	UNP O94925
D	59	MET	-	initiating methionine	UNP O94925
D	60	ARG	-	expression tag	UNP O94925
D	61	GLY	-	expression tag	UNP O94925
D	62	SER	-	expression tag	UNP O94925
D	63	HIS	-	expression tag	UNP O94925
D	64	HIS	-	expression tag	UNP O94925
D	65	HIS	-	expression tag	UNP O94925
D	66	HIS	-	expression tag	UNP O94925
D	67	HIS	-	expression tag	UNP O94925
D	68	HIS	-	expression tag	UNP O94925
D	69	GLY	-	expression tag	UNP O94925
D	70	SER	-	expression tag	UNP O94925

- Molecule 2 is 2-phenyl- {N}-[5-[[[(3 {R})-1-[5-(2-phenylethanoylamino)-1,3,4-thiadiazol-2-yl]pyrrolidin-3-yl]amino]-1,3,4-thiadiazol-2-yl]ethanamide (three-letter code: 5XX) (formula: C<sub>24</sub>H<sub>24</sub>N<sub>8</sub>O<sub>2</sub>S<sub>2</sub>).



Mol	Chain	Residues	Atoms				ZeroOcc	AltConf	
2	A	1	Total	C	N	O	S	0	0
			36	24	8	2	2		
2	D	1	Total	C	N	O	S	0	0
			36	24	8	2	2		

- Molecule 3 is water.

Mol	Chain	Residues	Atoms		ZeroOcc	AltConf
3	A	180	Total	O	0	0
			180	180		
3	B	167	Total	O	0	0
			167	167		
3	C	177	Total	O	0	0
			177	177		
3	D	176	Total	O	0	0
			176	176		





## 4 Data and refinement statistics

Property	Value	Source
Space group	P 21 21 21	Depositor
Cell constants a, b, c, $\alpha$ , $\beta$ , $\gamma$	98.05Å 138.62Å 176.31Å 90.00° 90.00° 90.00°	Depositor
Resolution (Å)	44.83 – 2.50 47.63 – 2.30	Depositor EDS
% Data completeness (in resolution range)	99.6 (44.83-2.50) 99.8 (47.63-2.30)	Depositor EDS
$R_{merge}$	0.12	Depositor
$R_{sym}$	(Not available)	Depositor
$\langle I/\sigma(I) \rangle$ <sup>1</sup>	2.25 (at 2.29Å)	Xtrriage
Refinement program	PHENIX 1.8.4_1496	Depositor
R, $R_{free}$	0.225 , 0.265 0.228 , 0.269	Depositor DCC
$R_{free}$ test set	2000 reflections (1.87%)	wwPDB-VP
Wilson B-factor (Å <sup>2</sup> )	29.9	Xtrriage
Anisotropy	0.546	Xtrriage
Bulk solvent $k_{sol}$ (e/Å <sup>3</sup> ), $B_{sol}$ (Å <sup>2</sup> )	0.35 , 40.5	EDS
L-test for twinning <sup>2</sup>	$\langle  L  \rangle = 0.49$ , $\langle L^2 \rangle = 0.32$	Xtrriage
Estimated twinning fraction	No twinning to report.	Xtrriage
$F_o, F_c$ correlation	0.94	EDS
Total number of atoms	13548	wwPDB-VP
Average B, all atoms (Å <sup>2</sup> )	28.0	wwPDB-VP

Xtrriage's analysis on translational NCS is as follows: *The analyses of the Patterson function reveals a significant off-origin peak that is 59.57 % of the origin peak, indicating pseudo-translational symmetry. The chance of finding a peak of this or larger height randomly in a structure without pseudo-translational symmetry is equal to 1.7307e-05. The detected translational NCS is most likely also responsible for the elevated intensity ratio.*

<sup>1</sup>Intensities estimated from amplitudes.

<sup>2</sup>Theoretical values of  $\langle |L| \rangle$ ,  $\langle L^2 \rangle$  for acentric reflections are 0.5, 0.333 respectively for untwinned datasets, and 0.375, 0.2 for perfectly twinned datasets.



## 5 Model quality

### 5.1 Standard geometry

Bond lengths and bond angles in the following residue types are not validated in this section: 5XX

The Z score for a bond length (or angle) is the number of standard deviations the observed value is removed from the expected value. A bond length (or angle) with  $|Z| > 5$  is considered an outlier worth inspection. RMSZ is the root-mean-square of all Z scores of the bond lengths (or angles).

Mol	Chain	Bond lengths		Bond angles	
		RMSZ	# Z  >5	RMSZ	# Z  >5
1	A	0.50	0/3266	0.61	2/4408 (0.0%)
1	B	0.51	0/3266	0.59	2/4408 (0.0%)
1	C	0.51	0/3266	0.60	0/4408
1	D	0.54	2/3266 (0.1%)	0.61	1/4408 (0.0%)
All	All	0.52	2/13064 (0.0%)	0.60	5/17632 (0.0%)

Chiral center outliers are detected by calculating the chiral volume of a chiral center and verifying if the center is modelled as a planar moiety or with the opposite hand. A planarity outlier is detected by checking planarity of atoms in a peptide group, atoms in a mainchain group or atoms of a sidechain that are expected to be planar.

Mol	Chain	#Chirality outliers	#Planarity outliers
1	B	0	1
1	D	0	2
All	All	0	3

All (2) bond length outliers are listed below:

Mol	Chain	Res	Type	Atoms	Z	Observed(Å)	Ideal(Å)
1	D	317	PHE	CD1-CE1	-7.38	1.24	1.39
1	D	317	PHE	CD2-CE2	-5.78	1.27	1.39

All (5) bond angle outliers are listed below:

Mol	Chain	Res	Type	Atoms	Z	Observed(°)	Ideal(°)
1	B	251	GLN	CA-CB-CG	7.08	128.97	113.40
1	A	193	MET	CG-SD-CE	5.87	109.58	100.20
1	D	315	LEU	CA-CB-CG	5.47	127.88	115.30
1	A	193	MET	CB-CG-SD	5.36	128.49	112.40
1	B	316	ARG	NE-CZ-NH1	-5.09	117.75	120.30

There are no chirality outliers.

All (3) planarity outliers are listed below:

Mol	Chain	Res	Type	Group
1	B	250	PRO	Peptide
1	D	316	ARG	Peptide
1	D	317	PHE	Peptide

## 5.2 Too-close contacts [i](#)

In the following table, the Non-H and H(model) columns list the number of non-hydrogen atoms and hydrogen atoms in the chain respectively. The H(added) column lists the number of hydrogen atoms added and optimized by MolProbity. The Clashes column lists the number of clashes within the asymmetric unit, whereas Symm-Clashes lists symmetry-related clashes.

Mol	Chain	Non-H	H(model)	H(added)	Clashes	Symm-Clashes
1	A	3194	0	3167	80	0
1	B	3194	0	3167	75	0
1	C	3194	0	3167	56	0
1	D	3194	0	3167	91	0
2	A	36	0	0	3	0
2	D	36	0	0	0	1
3	A	180	0	0	18	1
3	B	167	0	0	19	4
3	C	177	0	0	6	0
3	D	176	0	0	13	2
All	All	13548	0	12668	284	4

The all-atom clashscore is defined as the number of clashes found per 1000 atoms (including hydrogen atoms). The all-atom clashscore for this structure is 11.

All (284) close contacts within the same asymmetric unit are listed below, sorted by their clash magnitude.

Atom-1	Atom-2	Interatomic distance (Å)	Clash overlap (Å)
1:A:530:ASP:O	3:A:701:HOH:O	1.84	0.95
1:C:318:ASN:O	3:C:602:HOH:O	1.87	0.93
1:B:364:MET:SD	3:B:748:HOH:O	2.27	0.92
1:B:271:ARG:O	3:B:601:HOH:O	1.86	0.92
1:B:252:LEU:HD21	3:B:754:HOH:O	1.71	0.91
1:C:249:ILE:HD11	1:C:252:LEU:HG	1.51	0.90
1:A:528:ASN:ND2	1:D:528:ASN:OD1	2.06	0.88
1:B:251:GLN:HE21	1:B:375:ALA:HB1	1.38	0.87

*Continued on next page...*

*Continued from previous page...*

Atom-1	Atom-2	Interatomic distance (Å)	Clash overlap (Å)
1:A:364:MET:SD	3:A:847:HOH:O	2.34	0.85
1:D:239:LYS:NZ	3:D:702:HOH:O	2.10	0.82
1:B:433:LEU:O	3:B:602:HOH:O	1.97	0.81
1:A:433:LEU:O	3:A:702:HOH:O	1.98	0.80
1:A:154:PRO:HD2	1:A:157:LYS:HD2	1.62	0.80
1:D:234:TYR:CD2	1:D:274:THR:HG23	2.15	0.80
1:C:167:LEU:O	3:C:603:HOH:O	1.97	0.79
1:A:316:ARG:HH22	1:A:319:LYS:HD2	1.47	0.79
1:B:313:SER:O	1:C:316:ARG:NH2	2.16	0.78
1:A:234:TYR:CD2	1:A:274:THR:HG23	2.19	0.78
1:A:247:ASP:CA	1:A:252:LEU:HD11	2.08	0.76
1:B:249:ILE:HD13	1:B:379:SER:OG	1.84	0.75
1:D:179:ASP:OD1	1:D:182:ARG:NH2	2.20	0.74
1:B:530:ASP:O	3:B:604:HOH:O	2.06	0.72
1:A:334:ASN:OD1	3:A:703:HOH:O	2.07	0.72
1:A:424:GLU:OE1	3:A:704:HOH:O	2.08	0.71
1:D:142:LEU:O	1:D:145:THR:OG1	2.08	0.71
1:A:362:ASN:OD1	3:A:705:HOH:O	2.08	0.71
1:D:221:PRO:O	3:D:701:HOH:O	2.08	0.71
1:D:187:THR:HG23	1:D:188:THR:HG23	1.70	0.70
1:A:246:ALA:CB	1:A:252:LEU:HD13	2.21	0.70
1:A:247:ASP:HA	1:A:252:LEU:HD11	1.74	0.70
1:A:152:LYS:HE3	1:A:193:MET:HE2	1.75	0.69
1:B:146:ILE:O	1:B:157:LYS:NZ	2.22	0.68
1:D:285:SER:OG	1:D:288:LYS:NZ	2.26	0.68
1:C:144:TYR:OH	1:C:196:LYS:NZ	2.24	0.68
1:B:234:TYR:CD2	1:B:274:THR:HG23	2.28	0.68
1:D:144:TYR:OH	1:D:196:LYS:NZ	2.22	0.68
1:B:526:PHE:O	3:B:605:HOH:O	2.11	0.68
1:C:234:TYR:CD2	1:C:274:THR:HG23	2.29	0.67
1:A:374:ASN:OD1	3:A:707:HOH:O	2.11	0.67
1:B:252:LEU:CG	3:B:754:HOH:O	2.40	0.67
1:D:197:ASP:O	3:D:704:HOH:O	2.12	0.67
1:D:519:ASP:OD2	3:D:703:HOH:O	2.12	0.67
1:A:530:ASP:O	3:A:708:HOH:O	2.11	0.67
1:B:252:LEU:CD2	3:B:754:HOH:O	2.34	0.66
1:A:315:LEU:C	1:A:318:ASN:HD21	2.00	0.65
1:C:150:GLN:OE1	1:C:151:GLU:N	2.30	0.65
1:B:321:PHE:O	3:B:607:HOH:O	2.14	0.65
1:B:318:ASN:HD21	1:B:333:VAL:HG11	1.61	0.64
1:B:316:ARG:HD3	1:B:466:ASP:OD1	1.97	0.64

*Continued on next page...*

*Continued from previous page...*

Atom-1	Atom-2	Interatomic distance (Å)	Clash overlap (Å)
1:C:233:LEU:HD22	1:C:519:ASP:HB3	1.79	0.64
1:C:512:LYS:NZ	3:C:601:HOH:O	1.85	0.64
1:D:164:SER:O	3:D:705:HOH:O	2.14	0.64
1:A:246:ALA:HB3	1:A:252:LEU:HD13	1.78	0.64
1:D:301:THR:OG1	1:D:454:ASN:ND2	2.29	0.63
1:D:148:GLU:OE2	1:D:157:LYS:NZ	2.21	0.63
1:D:444:GLU:HB2	3:D:708:HOH:O	1.96	0.63
1:D:154:PRO:HD2	1:D:157:LYS:HD3	1.79	0.63
1:B:507:MET:O	3:B:608:HOH:O	2.16	0.63
1:D:313:SER:C	1:D:317:PHE:CZ	2.72	0.63
1:C:314:GLY:C	1:C:316:ARG:H	2.00	0.62
1:B:487:ILE:HD12	1:B:513:GLY:HA3	1.82	0.62
1:D:316:ARG:O	1:D:318:ASN:N	2.32	0.61
1:A:215:ARG:NH1	3:A:718:HOH:O	2.33	0.61
1:C:306:ARG:HH12	1:D:257:PRO:HB2	1.67	0.60
1:B:315:LEU:O	1:B:316:ARG:HB2	2.00	0.60
1:D:155:VAL:HG21	1:D:185:LEU:HD11	1.83	0.60
1:D:302:GLU:OE2	1:D:306:ARG:NH2	2.35	0.59
1:A:317:PHE:CE2	1:D:317:PHE:HB3	2.37	0.59
1:B:233:LEU:HD22	1:B:519:ASP:HB3	1.82	0.59
1:D:234:TYR:CD2	1:D:274:THR:CG2	2.85	0.59
1:B:314:GLY:O	1:B:316:ARG:N	2.35	0.58
1:D:450:GLU:OE1	3:D:706:HOH:O	2.16	0.58
1:B:374:ASN:OD1	3:B:609:HOH:O	2.17	0.58
1:D:316:ARG:HB2	1:D:317:PHE:CD2	2.37	0.58
1:B:528:ASN:OD1	1:C:528:ASN:OD1	2.21	0.57
1:D:222:ASP:O	3:D:707:HOH:O	2.17	0.57
1:A:247:ASP:HA	1:A:252:LEU:CD1	2.33	0.57
1:B:470:GLN:NE2	3:B:617:HOH:O	2.33	0.56
1:C:250:PRO:HD2	1:C:379:SER:HB2	1.87	0.56
1:A:472:ALA:HA	3:A:762:HOH:O	2.04	0.56
1:C:248:TYR:OH	1:C:380:GLU:OE2	2.15	0.56
1:A:233:LEU:HD22	1:A:519:ASP:HB3	1.88	0.55
1:B:466:ASP:OD1	1:B:466:ASP:N	2.39	0.55
1:D:184:THR:O	1:D:187:THR:HG22	2.06	0.55
1:A:251:GLN:O	1:A:254:LYS:HE2	2.07	0.55
1:D:314:GLY:CA	1:D:317:PHE:HZ	2.19	0.55
1:A:533:ARG:NH1	3:A:725:HOH:O	2.40	0.55
1:B:137:SER:OG	1:B:140:ASP:OD2	2.24	0.54
1:D:445:ARG:NH2	3:D:714:HOH:O	2.39	0.54
1:B:244:LYS:NZ	3:B:628:HOH:O	2.40	0.54

*Continued on next page...*

*Continued from previous page...*

Atom-1	Atom-2	Interatomic distance (Å)	Clash overlap (Å)
1:D:431:ALA:HB1	1:D:440:PRO:HG2	1.90	0.54
1:A:146:ILE:O	1:A:157:LYS:NZ	2.32	0.54
1:D:331:PRO:HD2	1:D:458:LEU:HD13	1.90	0.54
1:A:316:ARG:NH2	1:A:319:LYS:HD2	2.20	0.53
1:D:139:GLU:OE1	1:D:139:GLU:N	2.35	0.53
1:A:317:PHE:CE2	1:D:317:PHE:HD2	2.26	0.53
1:B:251:GLN:NE2	1:B:375:ALA:HB1	2.17	0.53
1:A:152:LYS:HG3	1:A:193:MET:CB	2.39	0.53
1:A:244:LYS:NZ	3:A:713:HOH:O	2.25	0.53
1:D:497:MET:HE1	1:D:516:PHE:CE1	2.44	0.53
1:B:252:LEU:HG	3:B:754:HOH:O	2.08	0.52
1:A:234:TYR:CD2	1:A:274:THR:CG2	2.91	0.52
1:B:383:SER:O	1:B:383:SER:OG	2.26	0.52
1:B:194:LEU:HA	1:B:198:LEU:HD23	1.91	0.52
1:C:249:ILE:HD12	1:C:252:LEU:H	1.74	0.52
1:A:138:LEU:O	1:A:142:LEU:HG	2.10	0.52
1:D:233:LEU:HD22	1:D:519:ASP:HB3	1.91	0.52
1:D:313:SER:HB3	1:D:317:PHE:CE1	2.44	0.52
1:A:386:ARG:NH2	3:A:728:HOH:O	2.42	0.52
1:A:142:LEU:O	1:A:146:ILE:HD12	2.10	0.52
1:B:466:ASP:HB2	1:B:507:MET:SD	2.50	0.51
1:B:478:PRO:HD2	1:B:490:VAL:O	2.09	0.51
1:D:445:ARG:NE	3:D:714:HOH:O	2.41	0.51
1:A:152:LYS:HG3	1:A:193:MET:HB3	1.92	0.51
1:A:317:PHE:HE2	1:D:317:PHE:HB3	1.76	0.51
1:C:194:LEU:HD23	1:C:198:LEU:HG	1.93	0.51
1:A:223:PHE:O	1:A:227:THR:HG23	2.11	0.51
1:A:150:GLN:OE1	1:A:150:GLN:N	2.44	0.51
1:A:359:GLN:OE1	3:A:710:HOH:O	2.19	0.51
1:B:140:ASP:OD1	1:B:196:LYS:HE2	2.11	0.51
1:C:216:ARG:HG2	1:C:216:ARG:HH11	1.76	0.51
1:B:316:ARG:HD3	1:B:466:ASP:CG	2.31	0.50
1:C:382:GLU:O	3:C:604:HOH:O	2.18	0.50
1:C:497:MET:HE1	1:C:516:PHE:CE1	2.47	0.50
1:D:313:SER:O	1:D:317:PHE:CZ	2.65	0.50
1:D:144:TYR:HA	1:D:147:ALA:HB3	1.94	0.50
1:B:318:ASN:ND2	1:B:333:VAL:HG11	2.26	0.50
1:A:252:LEU:HD12	1:A:253:ALA:N	2.27	0.49
1:A:323:ASN:HA	1:D:316:ARG:HH21	1.77	0.49
1:B:249:ILE:O	1:B:251:GLN:N	2.45	0.49
1:D:249:ILE:HB	1:D:379:SER:HB3	1.94	0.49

*Continued on next page...*

*Continued from previous page...*

Atom-1	Atom-2	Interatomic distance (Å)	Clash overlap (Å)
1:A:331:PRO:HD2	1:A:458:LEU:HD13	1.93	0.49
1:C:306:ARG:NH1	1:D:257:PRO:HB2	2.27	0.49
1:B:434:ALA:HB2	1:B:490:VAL:HG13	1.94	0.49
1:C:184:THR:O	1:C:187:THR:OG1	2.30	0.49
1:C:188:THR:HG22	1:C:190:ASP:H	1.77	0.49
3:A:859:HOH:O	1:D:492:PRO:HB3	2.13	0.49
1:B:252:LEU:HD11	3:B:754:HOH:O	2.12	0.49
1:C:435:ASN:HA	3:C:628:HOH:O	2.12	0.49
1:A:171:ASP:OD1	1:A:173:ARG:HD3	2.13	0.48
1:D:314:GLY:C	1:D:317:PHE:HZ	2.16	0.48
1:D:231:ASP:O	1:D:235:GLU:HG2	2.13	0.48
1:A:348:VAL:HG23	1:A:353:LYS:HG3	1.96	0.48
1:C:257:PRO:HB3	1:C:503:PRO:HG3	1.95	0.48
1:B:223:PHE:O	1:B:227:THR:HG23	2.13	0.48
1:C:249:ILE:HD12	1:C:251:GLN:H	1.77	0.48
1:A:188:THR:O	1:A:188:THR:OG1	2.18	0.48
1:A:252:LEU:HD12	1:A:252:LEU:C	2.34	0.48
1:A:529:TYR:CZ	1:D:478:PRO:HG3	2.49	0.48
1:A:317:PHE:HE2	1:D:317:PHE:HD2	1.62	0.48
1:A:487:ILE:HD12	1:A:513:GLY:HA3	1.96	0.48
1:C:190:ASP:O	1:C:192:VAL:HG12	2.14	0.48
1:D:472:ALA:HA	3:D:752:HOH:O	2.13	0.48
1:A:317:PHE:HE2	1:D:317:PHE:CD2	2.31	0.48
1:C:378:GLN:O	1:C:381:ARG:HG2	2.13	0.47
1:B:169:THR:OG1	1:B:178:MET:SD	2.72	0.47
1:D:388:PHE:HA	1:D:410:LEU:HD11	1.95	0.47
1:B:139:GLU:HG3	1:B:207:ILE:HD13	1.96	0.47
1:B:191:GLY:HA3	1:B:192:VAL:HA	1.66	0.47
1:B:342:SER:HA	1:B:409:ILE:HD12	1.95	0.47
1:D:161:ALA:HB1	1:D:214:PHE:HE1	1.80	0.47
1:D:487:ILE:HD12	1:D:513:GLY:HA3	1.96	0.47
1:B:161:ALA:HB1	1:B:214:PHE:HE1	1.78	0.47
1:B:466:ASP:CG	3:B:608:HOH:O	2.53	0.47
1:B:317:PHE:HZ	1:C:317:PHE:CD2	2.33	0.47
1:A:216:ARG:HD3	1:A:544:GLU:OE2	2.16	0.46
1:D:142:LEU:O	1:D:146:ILE:HD12	2.15	0.46
1:B:217:LYS:HB3	1:B:217:LYS:HE3	1.58	0.46
1:C:333:VAL:HG23	1:C:336:GLY:H	1.80	0.46
1:D:188:THR:HB	1:D:190:ASP:HB2	1.97	0.46
1:D:378:GLN:O	1:D:381:ARG:HG2	2.14	0.46
1:C:143:PHE:CG	1:C:196:LYS:HG3	2.50	0.46

*Continued on next page...*

*Continued from previous page...*

Atom-1	Atom-2	Interatomic distance (Å)	Clash overlap (Å)
1:B:478:PRO:HG3	1:C:529:TYR:CE1	2.51	0.46
1:A:435:ASN:HA	3:A:730:HOH:O	2.16	0.46
1:D:313:SER:O	1:D:317:PHE:CE2	2.69	0.46
1:D:317:PHE:CD1	1:D:317:PHE:C	2.89	0.46
1:A:191:GLY:HA3	1:A:192:VAL:HA	1.55	0.46
1:C:452:VAL:O	1:C:456:LEU:HG	2.15	0.46
1:A:315:LEU:O	1:A:315:LEU:HD23	2.16	0.45
1:C:288:LYS:HE3	1:C:337:ALA:CB	2.45	0.45
1:D:256:SER:HB3	1:D:259:LEU:HG	1.98	0.45
1:A:139:GLU:HG3	1:A:207:ILE:HD13	1.97	0.45
1:D:194:LEU:HD23	1:D:198:LEU:HG	1.98	0.45
1:D:345:LYS:HE2	1:D:356:TYR:CE1	2.52	0.45
1:C:216:ARG:HG2	1:C:216:ARG:NH1	2.31	0.45
1:B:243:GLY:HA3	1:B:511:VAL:HG21	1.98	0.45
1:B:533:ARG:NH1	3:B:612:HOH:O	2.24	0.45
1:A:329:HIS:ND1	1:A:329:HIS:N	2.65	0.45
1:B:257:PRO:HB3	1:B:503:PRO:HG3	1.98	0.45
1:A:357:VAL:O	1:A:361:LEU:HG	2.17	0.45
2:A:601:5XX:C28	1:D:316:ARG:HH22	2.30	0.44
1:B:345:LYS:HD2	1:B:345:LYS:HA	1.87	0.44
1:B:171:ASP:OD1	1:B:173:ARG:HD3	2.17	0.44
1:B:255:PHE:CE1	1:B:500:TRP:HZ2	2.35	0.44
1:D:313:SER:CB	1:D:317:PHE:CE1	3.01	0.44
1:A:147:ALA:C	1:A:149:GLY:H	2.21	0.44
1:A:317:PHE:CZ	1:D:317:PHE:HB3	2.53	0.44
1:D:374:ASN:O	1:D:378:GLN:HG2	2.17	0.44
1:D:421:VAL:HG21	1:D:426:ALA:HB2	2.00	0.44
1:A:140:ASP:O	1:A:143:PHE:HB3	2.18	0.44
1:A:203:VAL:HG23	1:A:207:ILE:HD13	1.99	0.44
1:C:140:ASP:OD1	1:C:196:LYS:HG2	2.18	0.44
1:C:152:LYS:HE2	1:C:193:MET:HB2	2.00	0.44
1:A:313:SER:CB	1:A:329:HIS:CD2	3.01	0.43
1:A:447:LEU:O	3:A:711:HOH:O	2.21	0.43
1:B:528:ASN:ND2	1:C:529:TYR:OH	2.51	0.43
1:C:191:GLY:HA3	1:C:192:VAL:HA	1.60	0.43
1:D:191:GLY:HA3	1:D:192:VAL:HA	1.52	0.43
1:D:345:LYS:HB3	1:D:353:LYS:HG2	2.00	0.43
1:B:331:PRO:HD2	1:B:458:LEU:HD13	2.00	0.43
1:B:182:ARG:O	3:B:610:HOH:O	2.21	0.43
1:C:161:ALA:HB1	1:C:214:PHE:HE1	1.84	0.43
1:D:234:TYR:CE2	1:D:274:THR:HG23	2.52	0.43

*Continued on next page...*



*Continued from previous page...*

Atom-1	Atom-2	Interatomic distance (Å)	Clash overlap (Å)
1:C:317:PHE:CD2	1:C:320:LEU:HD12	2.54	0.43
1:C:173:ARG:HD2	1:C:441:ILE:C	2.38	0.43
1:C:246:ALA:HB2	1:C:483:VAL:HG22	2.01	0.43
1:A:319:LYS:HZ2	2:A:601:5XX:C12	2.32	0.43
1:B:409:ILE:HD13	1:B:409:ILE:HA	1.91	0.43
1:B:431:ALA:HB1	1:B:440:PRO:HG2	2.00	0.43
1:D:264:VAL:HG22	1:D:497:MET:HG2	2.01	0.43
1:D:524:CYS:HA	1:D:539:LEU:O	2.19	0.43
1:D:233:LEU:CD2	1:D:519:ASP:HB3	2.49	0.43
1:B:251:GLN:HG3	1:B:254:LYS:NZ	2.33	0.43
1:A:315:LEU:O	1:A:318:ASN:ND2	2.50	0.43
1:A:317:PHE:HD1	1:A:320:LEU:HD12	1.83	0.43
1:C:487:ILE:HD12	1:C:513:GLY:HA3	1.99	0.43
1:B:159:ILE:O	1:B:163:LYS:HG3	2.18	0.43
1:C:314:GLY:C	1:C:316:ARG:N	2.70	0.43
1:A:146:ILE:HD12	1:A:146:ILE:H	1.84	0.42
1:B:252:LEU:CD1	3:B:754:HOH:O	2.67	0.42
1:D:139:GLU:HG2	1:D:200:LYS:HG3	2.01	0.42
1:C:194:LEU:HA	1:C:198:LEU:HD23	2.01	0.42
1:D:173:ARG:HD2	1:D:441:ILE:C	2.38	0.42
1:A:320:LEU:HD13	2:A:601:5XX:C29	2.50	0.42
1:B:147:ALA:C	1:B:149:GLY:H	2.21	0.42
1:B:345:LYS:HB3	1:B:353:LYS:HG2	2.01	0.42
1:C:168:ARG:NE	3:C:613:HOH:O	2.32	0.42
1:A:313:SER:HA	1:A:329:HIS:HD2	1.85	0.42
1:B:458:LEU:HD23	1:B:458:LEU:HA	1.82	0.42
1:D:497:MET:HB3	1:D:497:MET:HE3	1.68	0.42
1:D:171:ASP:OD1	1:D:173:ARG:HD3	2.18	0.42
1:D:234:TYR:CG	1:D:274:THR:CG2	3.02	0.42
1:D:353:LYS:HB3	1:D:412:PHE:CZ	2.55	0.42
1:B:260:TRP:CE3	1:B:501:SER:HB2	2.54	0.42
1:C:234:TYR:CD2	1:C:274:THR:CG2	3.01	0.42
1:A:180:MET:HG2	1:A:202:CYS:HA	2.01	0.42
1:C:264:VAL:HG22	1:C:497:MET:HG2	2.02	0.42
1:D:280:PRO:HA	1:D:421:VAL:O	2.19	0.42
1:A:431:ALA:HB1	1:A:440:PRO:HG2	2.02	0.41
1:A:445:ARG:HD3	3:A:706:HOH:O	2.18	0.41
1:B:138:LEU:HD23	1:B:138:LEU:HA	1.88	0.41
1:D:215:ARG:HD2	3:D:772:HOH:O	2.18	0.41
1:D:147:ALA:O	1:D:150:GLN:HG2	2.20	0.41
1:C:247:ASP:OD1	1:C:248:TYR:N	2.53	0.41

*Continued on next page...*



Continued from previous page...

Atom-1	Atom-2	Interatomic distance (Å)	Clash overlap (Å)
1:C:302:GLU:O	1:C:306:ARG:HG3	2.21	0.41
1:A:529:TYR:CE1	1:D:478:PRO:HG3	2.55	0.41
1:B:316:ARG:NE	1:B:466:ASP:HB3	2.35	0.41
1:A:544:GLU:HB3	1:A:545:GLY:H	1.61	0.41
1:A:260:TRP:CE3	1:A:501:SER:HB2	2.56	0.41
1:A:360:PHE:CE1	1:A:446:VAL:HG12	2.54	0.41
1:A:527:HIS:CG	1:D:453:ARG:HD2	2.56	0.41
1:C:497:MET:HE3	1:C:497:MET:HB3	1.70	0.41
1:D:479:ALA:HB2	1:D:489:LEU:HD12	2.01	0.41
1:A:161:ALA:HB1	1:A:214:PHE:HE1	1.86	0.41
1:B:138:LEU:O	1:B:142:LEU:HG	2.21	0.41
1:C:363:LYS:HD3	1:C:444:GLU:OE2	2.20	0.41
1:D:277:THR:O	1:D:422:THR:HB	2.20	0.41
1:B:152:LYS:HB3	1:B:193:MET:HB3	2.03	0.41
1:D:248:TYR:CD2	1:D:249:ILE:HG23	2.56	0.41
1:D:439:CYS:HA	1:D:440:PRO:HD3	1.89	0.41
1:B:277:THR:HA	1:B:423:CYS:HB2	2.03	0.41
1:A:356:TYR:O	1:A:359:GLN:HG2	2.21	0.40
1:B:439:CYS:HA	1:B:440:PRO:HD3	1.88	0.40
1:B:497:MET:HE3	1:B:497:MET:HB3	1.90	0.40
1:C:138:LEU:HD12	1:C:138:LEU:H	1.84	0.40
1:D:314:GLY:HA2	3:D:864:HOH:O	2.20	0.40
1:A:479:ALA:HB2	1:A:489:LEU:HD12	2.01	0.40
1:B:299:LEU:HD13	1:B:303:TYR:CE2	2.57	0.40
1:C:227:THR:HB	1:C:272:HIS:CE1	2.56	0.40
1:D:196:LYS:HE2	1:D:196:LYS:HB2	1.82	0.40
1:C:223:PHE:O	1:C:227:THR:HG23	2.21	0.40
1:C:182:ARG:O	1:C:186:GLN:HG2	2.22	0.40
1:D:182:ARG:O	1:D:186:GLN:HG2	2.21	0.40
1:D:314:GLY:N	1:D:317:PHE:HZ	2.20	0.40

All (4) symmetry-related close contacts are listed below. The label for Atom-2 includes the symmetry operator and encoded unit-cell translations to be applied.

Atom-1	Atom-2	Interatomic distance (Å)	Clash overlap (Å)
3:A:854:HOH:O	3:B:744:HOH:O[1_455]	1.84	0.36
3:B:738:HOH:O	3:D:849:HOH:O[3_847]	2.01	0.19
2:D:601:5XX:S36	3:B:603:HOH:O[4_497]	2.11	0.09
3:B:681:HOH:O	3:D:735:HOH:O[3_847]	2.12	0.08

## 5.3 Torsion angles [i](#)

### 5.3.1 Protein backbone [i](#)

In the following table, the Percentiles column shows the percent Ramachandran outliers of the chain as a percentile score with respect to all X-ray entries followed by that with respect to entries of similar resolution.

The Analysed column shows the number of residues for which the backbone conformation was analysed, and the total number of residues.

Mol	Chain	Analysed	Favoured	Allowed	Outliers	Percentiles	
1	A	408/539 (76%)	388 (95%)	20 (5%)	0	100	100
1	B	408/539 (76%)	388 (95%)	13 (3%)	7 (2%)	9	16
1	C	408/539 (76%)	387 (95%)	19 (5%)	2 (0%)	29	48
1	D	408/539 (76%)	389 (95%)	17 (4%)	2 (0%)	29	48
All	All	1632/2156 (76%)	1552 (95%)	69 (4%)	11 (1%)	22	39

All (11) Ramachandran outliers are listed below:

Mol	Chain	Res	Type
1	B	315	LEU
1	B	316	ARG
1	C	248	TYR
1	D	316	ARG
1	D	317	PHE
1	B	190	ASP
1	B	250	PRO
1	B	246	ALA
1	B	249	ILE
1	B	191	GLY
1	C	544	GLU

### 5.3.2 Protein sidechains [i](#)

In the following table, the Percentiles column shows the percent sidechain outliers of the chain as a percentile score with respect to all X-ray entries followed by that with respect to entries of similar resolution.

The Analysed column shows the number of residues for which the sidechain conformation was analysed, and the total number of residues.

Mol	Chain	Analysed	Rotameric	Outliers	Percentiles	
1	A	353/462 (76%)	342 (97%)	11 (3%)	40	67
1	B	353/462 (76%)	343 (97%)	10 (3%)	43	70
1	C	353/462 (76%)	347 (98%)	6 (2%)	60	82
1	D	353/462 (76%)	347 (98%)	6 (2%)	60	82
All	All	1412/1848 (76%)	1379 (98%)	33 (2%)	50	76

All (33) residues with a non-rotameric sidechain are listed below:

Mol	Chain	Res	Type
1	A	152	LYS
1	A	190	ASP
1	A	224	MET
1	A	240	GLN
1	A	241	SER
1	A	287	VAL
1	A	319	LYS
1	A	329	HIS
1	A	359	GLN
1	A	360	PHE
1	A	528	ASN
1	B	216	ARG
1	B	251	GLN
1	B	318	ASN
1	B	360	PHE
1	B	379	SER
1	B	383	SER
1	B	466	ASP
1	B	506	LYS
1	B	528	ASN
1	B	544	GLU
1	C	151	GLU
1	C	183	LEU
1	C	215	ARG
1	C	258	ASP
1	C	360	PHE
1	C	528	ASN
1	D	310	LYS
1	D	315	LEU
1	D	345	LYS
1	D	360	PHE
1	D	387	ASN
1	D	528	ASN

Sometimes sidechains can be flipped to improve hydrogen bonding and reduce clashes. All (9) such sidechains are listed below:

Mol	Chain	Res	Type
1	A	318	ASN
1	A	329	HIS
1	A	528	ASN
1	B	251	GLN
1	B	318	ASN
1	B	528	ASN
1	C	229	HIS
1	D	454	ASN
1	D	528	ASN

### 5.3.3 RNA [i](#)

There are no RNA molecules in this entry.

## 5.4 Non-standard residues in protein, DNA, RNA chains [i](#)

There are no non-standard protein/DNA/RNA residues in this entry.

## 5.5 Carbohydrates [i](#)

There are no monosaccharides in this entry.

## 5.6 Ligand geometry [i](#)

2 ligands are modelled in this entry.

In the following table, the Counts columns list the number of bonds (or angles) for which Mogul statistics could be retrieved, the number of bonds (or angles) that are observed in the model and the number of bonds (or angles) that are defined in the Chemical Component Dictionary. The Link column lists molecule types, if any, to which the group is linked. The Z score for a bond length (or angle) is the number of standard deviations the observed value is removed from the expected value. A bond length (or angle) with  $|Z| > 2$  is considered an outlier worth inspection. RMSZ is the root-mean-square of all Z scores of the bond lengths (or angles).

Mol	Type	Chain	Res	Link	Bond lengths			Bond angles		
					Counts	RMSZ	# $ Z  > 2$	Counts	RMSZ	# $ Z  > 2$
2	5XX	D	601	-	31,40,40	3.73	9 (29%)	34,54,54	2.00	11 (32%)
2	5XX	A	601	-	31,40,40	3.66	9 (29%)	34,54,54	1.58	6 (17%)

In the following table, the Chirals column lists the number of chiral outliers, the number of chiral centers analysed, the number of these observed in the model and the number defined in the Chemical Component Dictionary. Similar counts are reported in the Torsion and Rings columns. '-' means no outliers of that kind were identified.

Mol	Type	Chain	Res	Link	Chirals	Torsions	Rings
2	5XX	D	601	-	-	2/14/33/33	0/5/5/5
2	5XX	A	601	-	-	2/14/33/33	0/5/5/5

All (18) bond length outliers are listed below:

Mol	Chain	Res	Type	Atoms	Z	Observed(Å)	Ideal(Å)
2	D	601	5XX	C04-N03	-11.84	1.31	1.46
2	A	601	5XX	C04-N03	-11.69	1.31	1.46
2	A	601	5XX	C01-C05	-9.79	1.27	1.52
2	D	601	5XX	C01-C05	-9.71	1.27	1.52
2	D	601	5XX	C22-N03	7.87	1.44	1.32
2	A	601	5XX	C22-N03	7.03	1.43	1.32
2	D	601	5XX	C04-C05	5.56	1.63	1.53
2	A	601	5XX	C04-C05	5.21	1.63	1.53
2	A	601	5XX	C10-N11	5.13	1.45	1.36
2	D	601	5XX	C02-N03	5.07	1.54	1.47
2	D	601	5XX	C10-N11	4.90	1.45	1.36
2	A	601	5XX	C02-N03	4.69	1.54	1.47
2	A	601	5XX	C12-N11	4.13	1.44	1.35
2	A	601	5XX	C25-N26	3.99	1.43	1.36
2	D	601	5XX	C12-N11	3.89	1.44	1.35
2	D	601	5XX	C25-N26	3.70	1.43	1.36
2	D	601	5XX	C27-N26	3.62	1.43	1.35
2	A	601	5XX	C27-N26	3.31	1.43	1.35

All (17) bond angle outliers are listed below:

Mol	Chain	Res	Type	Atoms	Z	Observed(°)	Ideal(°)
2	D	601	5XX	C25-N26-C27	-5.51	114.66	129.54
2	A	601	5XX	C25-N26-C27	-4.12	118.42	129.54
2	D	601	5XX	C10-N11-C12	-3.87	119.08	129.54
2	D	601	5XX	C28-C27-N26	3.84	122.70	114.77
2	A	601	5XX	C07-N06-C05	-3.51	117.71	124.26
2	D	601	5XX	C13-C12-N11	3.46	121.92	114.77
2	D	601	5XX	C02-N03-C04	-2.91	104.03	111.55
2	A	601	5XX	C29-C28-C27	2.91	121.19	112.57
2	A	601	5XX	C13-C12-N11	2.89	120.74	114.77
2	D	601	5XX	C07-N06-C05	2.85	129.58	124.26

*Continued on next page...*

*Continued from previous page...*

Mol	Chain	Res	Type	Atoms	Z	Observed(°)	Ideal(°)
2	D	601	5XX	O35-C27-N26	-2.72	118.67	123.63
2	A	601	5XX	C01-C05-N06	-2.55	106.34	111.76
2	A	601	5XX	C02-N03-C04	-2.43	105.26	111.55
2	D	601	5XX	C01-C02-N03	2.27	106.02	103.35
2	D	601	5XX	C02-C01-C05	-2.15	100.96	104.08
2	D	601	5XX	C04-C05-N06	-2.12	108.15	112.69
2	D	601	5XX	O20-C12-N11	-2.04	119.90	123.63

There are no chirality outliers.

All (4) torsion outliers are listed below:

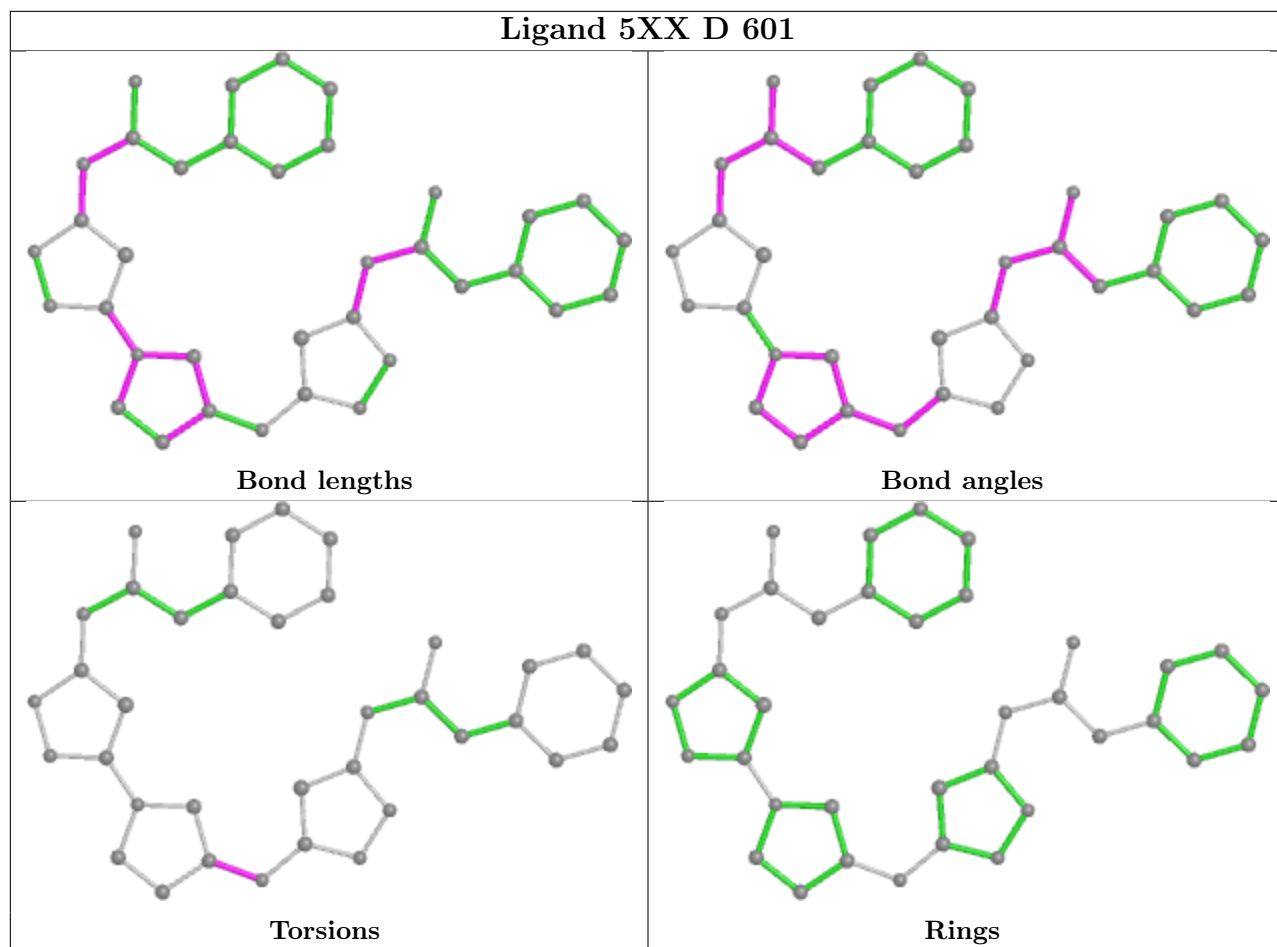
Mol	Chain	Res	Type	Atoms
2	D	601	5XX	C01-C05-N06-C07
2	D	601	5XX	C04-C05-N06-C07
2	A	601	5XX	C28-C27-N26-C25
2	A	601	5XX	O35-C27-N26-C25

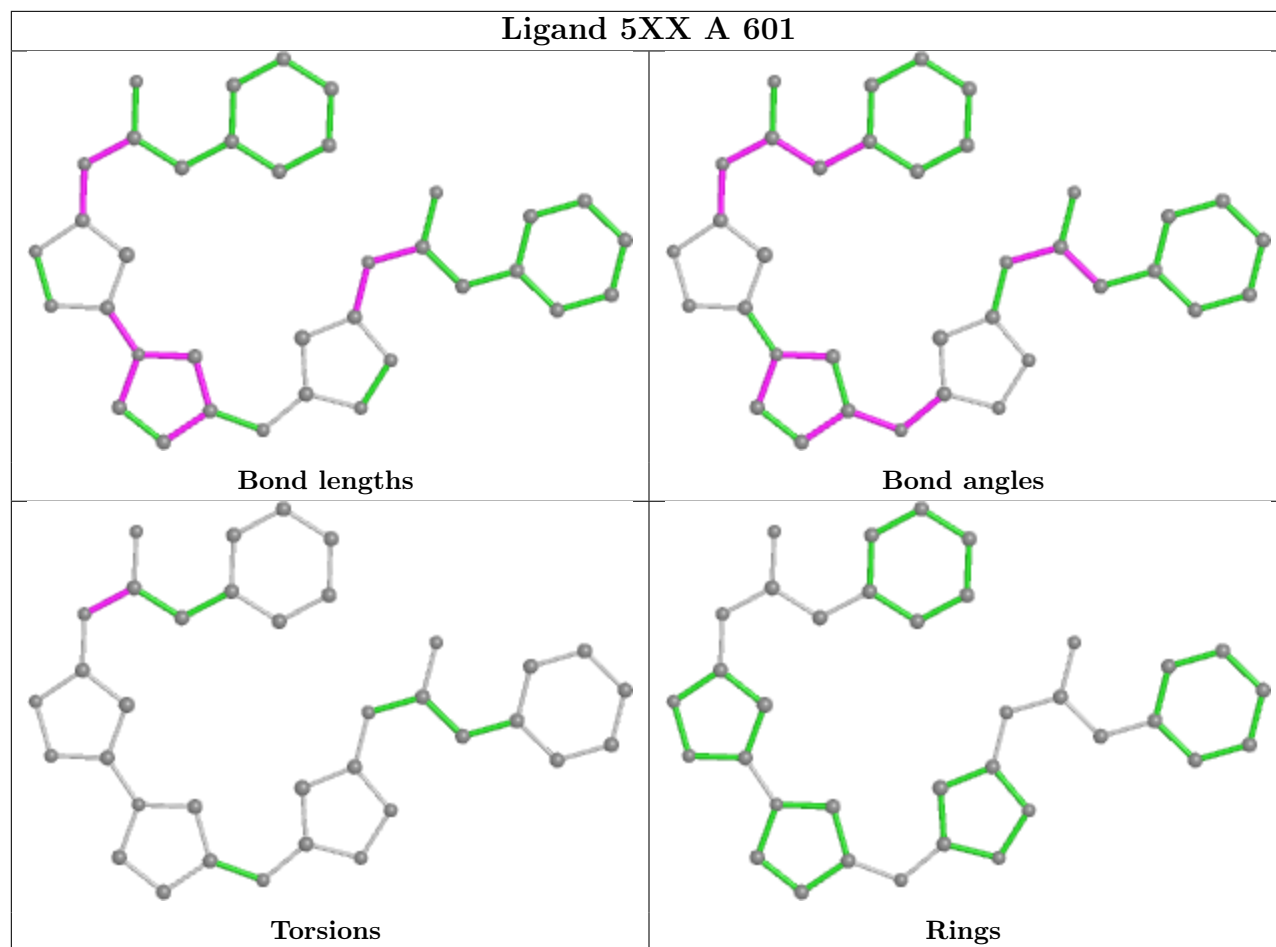
There are no ring outliers.

2 monomers are involved in 4 short contacts:

Mol	Chain	Res	Type	Clashes	Symm-Clashes
2	D	601	5XX	0	1
2	A	601	5XX	3	0

The following is a two-dimensional graphical depiction of Mogul quality analysis of bond lengths, bond angles, torsion angles, and ring geometry for all instances of the Ligand of Interest. In addition, ligands with molecular weight > 250 and outliers as shown on the validation Tables will also be included. For torsion angles, if less than 5% of the Mogul distribution of torsion angles is within 10 degrees of the torsion angle in question, then that torsion angle is considered an outlier. Any bond that is central to one or more torsion angles identified as an outlier by Mogul will be highlighted in the graph. For rings, the root-mean-square deviation (RMSD) between the ring in question and similar rings identified by Mogul is calculated over all ring torsion angles. If the average RMSD is greater than 60 degrees and the minimal RMSD between the ring in question and any Mogul-identified rings is also greater than 60 degrees, then that ring is considered an outlier. The outliers are highlighted in purple. The color gray indicates Mogul did not find sufficient equivalents in the CSD to analyse the geometry.





## 5.7 Other polymers [i](#)

There are no such residues in this entry.

## 5.8 Polymer linkage issues [i](#)

There are no chain breaks in this entry.



## 6 Fit of model and data

### 6.1 Protein, DNA and RNA chains

In the following table, the column labelled ‘#RSRZ > 2’ contains the number (and percentage) of RSRZ outliers, followed by percent RSRZ outliers for the chain as percentile scores relative to all X-ray entries and entries of similar resolution. The OWAB column contains the minimum, median, 95<sup>th</sup> percentile and maximum values of the occupancy-weighted average B-factor per residue. The column labelled ‘Q < 0.9’ lists the number of (and percentage) of residues with an average occupancy less than 0.9.

Mol	Chain	Analysed	<RSRZ>	#RSRZ>2	OWAB(Å <sup>2</sup> )	Q<0.9
1	A	410/539 (76%)	0.65	41 (10%) <b>7</b> <b>6</b>	12, 22, 62, 80	0
1	B	410/539 (76%)	0.76	43 (10%) <b>6</b> <b>6</b>	11, 22, 66, 91	0
1	C	410/539 (76%)	0.68	49 (11%) <b>4</b> <b>4</b>	10, 22, 68, 99	0
1	D	410/539 (76%)	0.66	46 (11%) <b>5</b> <b>4</b>	11, 22, 65, 98	0
All	All	1640/2156 (76%)	0.69	179 (10%) <b>5</b> <b>5</b>	10, 22, 66, 99	0

All (179) RSRZ outliers are listed below:

Mol	Chain	Res	Type	RSRZ
1	B	315	LEU	24.8
1	D	190	ASP	15.5
1	D	191	GLY	15.0
1	D	314	GLY	13.1
1	A	317	PHE	12.5
1	C	248	TYR	11.5
1	A	137	SER	11.0
1	B	250	PRO	10.5
1	D	188	THR	10.2
1	C	251	GLN	10.0
1	A	316	ARG	9.4
1	C	191	GLY	9.1
1	B	318	ASN	8.9
1	A	315	LEU	8.7
1	A	143	PHE	8.6
1	B	249	ILE	8.4
1	C	316	ARG	8.2
1	C	249	ILE	8.2
1	B	190	ASP	8.2
1	B	255	PHE	8.2
1	C	189	SER	8.0

*Continued on next page...*

*Continued from previous page...*

<b>Mol</b>	<b>Chain</b>	<b>Res</b>	<b>Type</b>	<b>RSRZ</b>
1	B	251	GLN	8.0
1	D	315	LEU	7.9
1	B	191	GLY	7.8
1	C	317	PHE	7.8
1	B	317	PHE	7.8
1	D	316	ARG	7.5
1	B	248	TYR	7.2
1	D	147	ALA	7.1
1	A	141	LEU	7.1
1	A	192	VAL	7.1
1	C	255	PHE	6.9
1	C	252	LEU	6.6
1	D	187	THR	6.6
1	C	190	ASP	6.5
1	A	191	GLY	6.4
1	B	252	LEU	6.3
1	D	317	PHE	6.2
1	C	254	LYS	6.2
1	D	185	LEU	6.2
1	D	149	GLY	6.2
1	C	149	GLY	6.1
1	A	190	ASP	6.1
1	D	545	GLY	6.1
1	C	187	THR	6.1
1	C	250	PRO	5.9
1	B	545	GLY	5.7
1	B	192	VAL	5.6
1	A	545	GLY	5.6
1	C	545	GLY	5.6
1	D	141	LEU	5.5
1	C	147	ALA	5.3
1	C	136	PRO	5.2
1	A	136	PRO	5.2
1	C	144	TYR	5.2
1	C	192	VAL	5.1
1	B	254	LYS	5.1
1	A	194	LEU	5.1
1	A	203	VAL	5.0
1	A	251	GLN	5.0
1	B	314	GLY	4.9
1	B	137	SER	4.9
1	D	189	SER	4.9

*Continued on next page...*

*Continued from previous page...*

<b>Mol</b>	<b>Chain</b>	<b>Res</b>	<b>Type</b>	<b>RSRZ</b>
1	A	140	ASP	4.8
1	B	316	ARG	4.8
1	A	189	SER	4.7
1	A	252	LEU	4.7
1	B	141	LEU	4.6
1	B	143	PHE	4.6
1	A	199	PHE	4.6
1	B	256	SER	4.4
1	B	347	GLY	4.3
1	D	194	LEU	4.3
1	D	186	GLN	4.2
1	A	318	ASN	4.2
1	D	144	TYR	4.0
1	B	193	MET	4.0
1	D	199	PHE	3.9
1	C	315	LEU	3.9
1	C	256	SER	3.9
1	A	314	GLY	3.9
1	D	195	ASP	3.9
1	C	183	LEU	3.8
1	D	249	ILE	3.8
1	B	144	TYR	3.8
1	D	145	THR	3.8
1	D	250	PRO	3.8
1	A	152	LYS	3.8
1	D	248	TYR	3.7
1	C	184	THR	3.7
1	D	254	LYS	3.7
1	C	148	GLU	3.7
1	D	140	ASP	3.7
1	A	193	MET	3.7
1	D	251	GLN	3.6
1	B	138	LEU	3.6
1	A	138	LEU	3.6
1	D	143	PHE	3.5
1	D	148	GLU	3.5
1	A	147	ALA	3.5
1	B	147	ALA	3.5
1	C	197	ASP	3.4
1	C	151	GLU	3.4
1	D	155	VAL	3.4
1	C	196	LYS	3.3

*Continued on next page...*

*Continued from previous page...*

<b>Mol</b>	<b>Chain</b>	<b>Res</b>	<b>Type</b>	<b>RSRZ</b>
1	A	254	LYS	3.2
1	A	149	GLY	3.2
1	D	137	SER	3.2
1	B	151	GLU	3.2
1	D	318	ASN	3.1
1	C	140	ASP	3.1
1	A	144	TYR	3.1
1	D	212	GLN	3.1
1	C	141	LEU	3.1
1	B	152	LYS	3.1
1	C	185	LEU	3.1
1	A	148	GLU	3.0
1	B	148	GLU	3.0
1	C	169	THR	3.0
1	B	153	ILE	2.9
1	C	194	LEU	2.9
1	A	155	VAL	2.8
1	C	152	LYS	2.8
1	C	347	GLY	2.8
1	A	201	LYS	2.8
1	B	466	ASP	2.8
1	B	189	SER	2.8
1	C	203	VAL	2.8
1	D	253	ALA	2.8
1	A	267	VAL	2.7
1	D	196	LYS	2.7
1	C	188	THR	2.7
1	D	252	LEU	2.6
1	C	195	ASP	2.6
1	D	142	LEU	2.6
1	D	150	GLN	2.6
1	D	192	VAL	2.6
1	A	195	ASP	2.6
1	B	197	ASP	2.6
1	D	347	GLY	2.6
1	C	318	ASN	2.5
1	D	136	PRO	2.5
1	C	150	GLN	2.5
1	A	207	ILE	2.5
1	D	152	LYS	2.4
1	A	347	GLY	2.4
1	D	257	PRO	2.4

*Continued on next page...*

*Continued from previous page...*

Mol	Chain	Res	Type	RSRZ
1	C	138	LEU	2.4
1	B	136	PRO	2.4
1	C	145	THR	2.4
1	A	151	GLU	2.3
1	A	256	SER	2.3
1	C	137	SER	2.2
1	D	151	GLU	2.2
1	B	195	ASP	2.2
1	A	188	THR	2.2
1	B	140	ASP	2.2
1	D	382	GLU	2.2
1	D	193	MET	2.2
1	A	153	ILE	2.2
1	B	201	LYS	2.2
1	B	142	LEU	2.2
1	C	257	PRO	2.2
1	B	257	PRO	2.2
1	C	204	GLN	2.1
1	B	267	VAL	2.1
1	A	142	LEU	2.1
1	C	186	GLN	2.1
1	C	253	ALA	2.1
1	B	145	THR	2.1
1	D	313	SER	2.0
1	B	458	LEU	2.0
1	A	146	ILE	2.0
1	C	159	ILE	2.0
1	C	199	PHE	2.0
1	B	478	PRO	2.0
1	B	237	ALA	2.0
1	A	211	THR	2.0
1	C	153	ILE	2.0

## 6.2 Non-standard residues in protein, DNA, RNA chains [i](#)

There are no non-standard protein/DNA/RNA residues in this entry.

## 6.3 Carbohydrates [i](#)

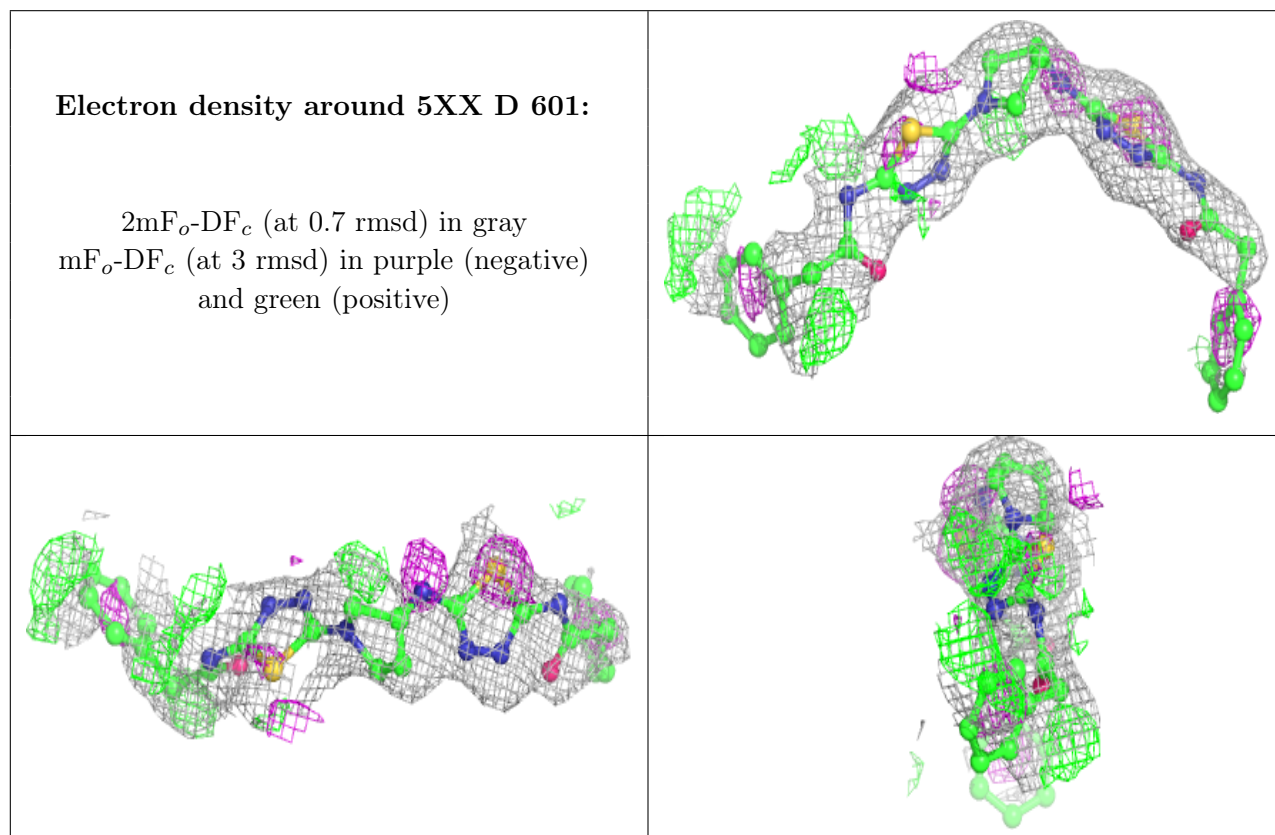
There are no monosaccharides in this entry.

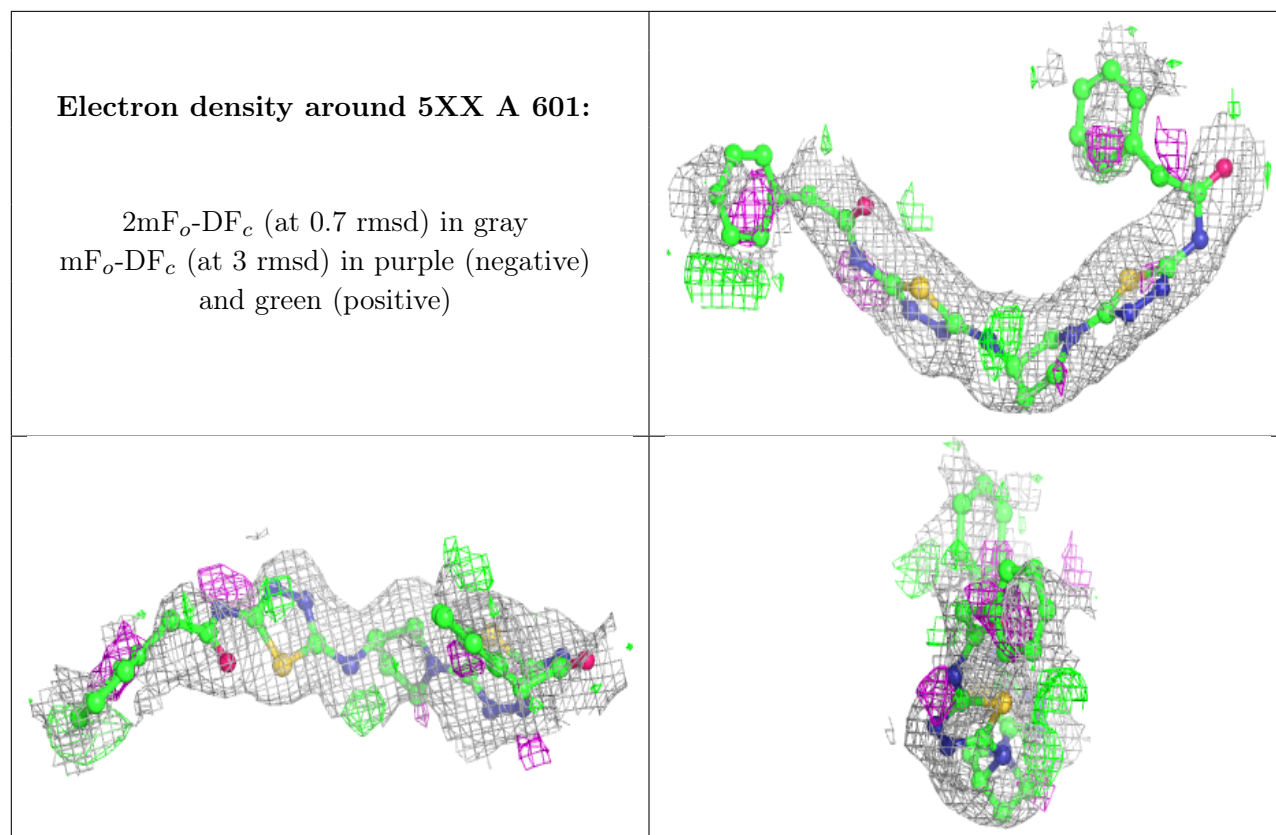
## 6.4 Ligands [i](#)

In the following table, the Atoms column lists the number of modelled atoms in the group and the number defined in the chemical component dictionary. The B-factors column lists the minimum, median, 95<sup>th</sup> percentile and maximum values of B factors of atoms in the group. The column labelled 'Q< 0.9' lists the number of atoms with occupancy less than 0.9.

Mol	Type	Chain	Res	Atoms	RSCC	RSR	B-factors(Å <sup>2</sup> )	Q<0.9
2	5XX	D	601	36/36	0.77	0.27	36,46,60,69	0
2	5XX	A	601	36/36	0.79	0.25	34,49,73,75	0

The following is a graphical depiction of the model fit to experimental electron density of all instances of the Ligand of Interest. In addition, ligands with molecular weight > 250 and outliers as shown on the geometry validation Tables will also be included. Each fit is shown from different orientation to approximate a three-dimensional view.





## 6.5 Other polymers [i](#)

There are no such residues in this entry.