



Full wwPDB X-ray Structure Validation Report ⓘ

Aug 7, 2020 – 03:51 PM BST

PDB ID : 5AFK
Title : alpha7-AChBP in complex with lobeline and fragment 2
Authors : Spurny, R.; Debaveye, S.; Farinha, A.; Veys, K.; Gossas, T.; Atack, J.;
Bertrand, D.; Kemp, J.; Vos, A.; Danielson, U.H.; Tresadern, G.; Ulens, C.
Deposited on : 2015-01-22
Resolution : 2.38 Å(reported)

This is a Full wwPDB X-ray Structure Validation Report for a publicly released PDB entry.

We welcome your comments at validation@mail.wwpdb.org

A user guide is available at

<https://www.wwpdb.org/validation/2017/XrayValidationReportHelp>

with specific help available everywhere you see the ⓘ symbol.

The following versions of software and data (see [references ⓘ](#)) were used in the production of this report:

MolProbity : 4.02b-467
Mogul : 1.8.5 (274361), CSD as541be (2020)
Xtriage (Phenix) : 1.13
EDS : 2.13.1
buster-report : 1.1.7 (2018)
Percentile statistics : 20191225.v01 (using entries in the PDB archive December 25th 2019)
Refmac : 5.8.0158
CCP4 : 7.0.044 (Gargrove)
Ideal geometry (proteins) : Engh & Huber (2001)
Ideal geometry (DNA, RNA) : Parkinson et al. (1996)
Validation Pipeline (wwPDB-VP) : 2.13.1

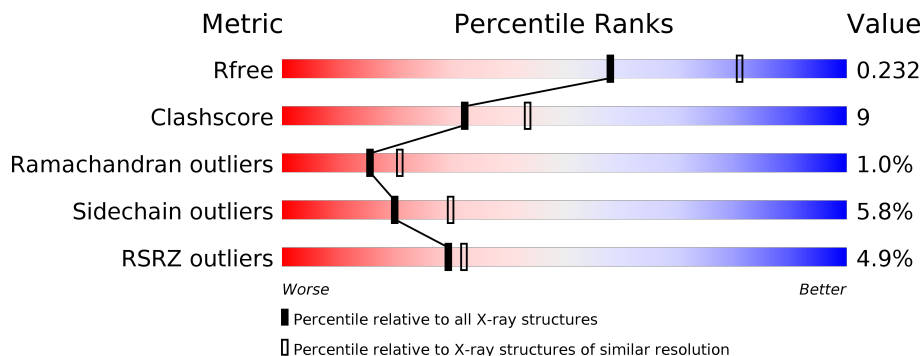
1 Overall quality at a glance

The following experimental techniques were used to determine the structure:

X-RAY DIFFRACTION

The reported resolution of this entry is 2.38 Å.

Percentile scores (ranging between 0-100) for global validation metrics of the entry are shown in the following graphic. The table shows the number of entries on which the scores are based.



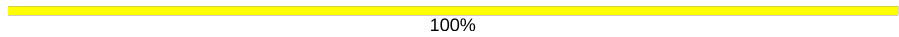



Metric	Whole archive (#Entries)	Similar resolution (#Entries, resolution range(Å))
R_{free}	130704	5509 (2.40-2.36)
Clashscore	141614	6082 (2.40-2.36)
Ramachandran outliers	138981	5973 (2.40-2.36)
Sidechain outliers	138945	5975 (2.40-2.36)
RSRZ outliers	127900	5397 (2.40-2.36)

The table below summarises the geometric issues observed across the polymeric chains and their fit to the electron density. The red, orange, yellow and green segments on the lower bar indicate the fraction of residues that contain outliers for ≥ 3 , 2, 1 and 0 types of geometric quality criteria respectively. A grey segment represents the fraction of residues that are not modelled. The numeric value for each fraction is indicated below the corresponding segment, with a dot representing fractions $\leq 5\%$. The upper red bar (where present) indicates the fraction of residues that have poor fit to the electron density. The numeric value is given above the bar.

Mol	Chain	Length	Quality of chain
1	A	205	 5% 83% 16%
1	B	205	 5% 82% 14%
1	C	205	 6% 80% 17%
1	D	205	 6% 80% 18%
1	E	205	 2% 82% 16%
2	F	4	 25% 50% 25%

Continued on next page...

Continued from previous page...

Mol	Chain	Length	Quality of chain
3	G	2	 100%
3	H	2	 50% 50%
3	I	2	 50% 50%
3	J	2	 50% 50%

The following table lists non-polymeric compounds, carbohydrate monomers and non-standard residues in protein, DNA, RNA chains that are outliers for geometric or electron-density-fit criteria:

Mol	Type	Chain	Res	Chirality	Geometry	Clashes	Electron density
2	BMA	F	3	X	-	-	-
2	MAN	F	4	X	-	-	-
3	NAG	I	2	X	-	-	-
3	NAG	J	2	X	-	-	-
5	GOL	C	1207	-	-	X	X
6	5VU	E	1207	-	-	X	X

2 Entry composition [i](#)

There are 7 unique types of molecules in this entry. The entry contains 9134 atoms, of which 0 are hydrogens and 0 are deuteriums.

In the tables below, the ZeroOcc column contains the number of atoms modelled with zero occupancy, the AltConf column contains the number of residues with at least one atom in alternate conformation and the Trace column contains the number of residues modelled with at most 2 atoms.

- Molecule 1 is a protein called ACETYLCHOLINE-BINDING PROTEIN, NEURONAL ACETYLCHOLINE RECEPTOR SUBUNIT ALPHA-7.

Mol	Chain	Residues	Atoms					ZeroOcc	AltConf	Trace
			Total	C	N	O	S			
1	A	205	Total 1687	C 1082	N 282	O 316	S 7	0	2	0
1	B	205	Total 1670	C 1071	N 279	O 313	S 7	0	0	0
1	C	205	Total 1687	C 1081	N 282	O 317	S 7	0	2	0
1	D	205	Total 1677	C 1076	N 280	O 314	S 7	0	1	0
1	E	205	Total 1670	C 1071	N 279	O 313	S 7	0	0	0

- Molecule 2 is an oligosaccharide called alpha-D-mannopyranose-(1-3)-beta-D-mannopyranose-(1-4)-2-acetamido-2-deoxy-beta-D-glucopyranose-(1-4)-2-acetamido-2-deoxy-beta-D-glucopyranose.



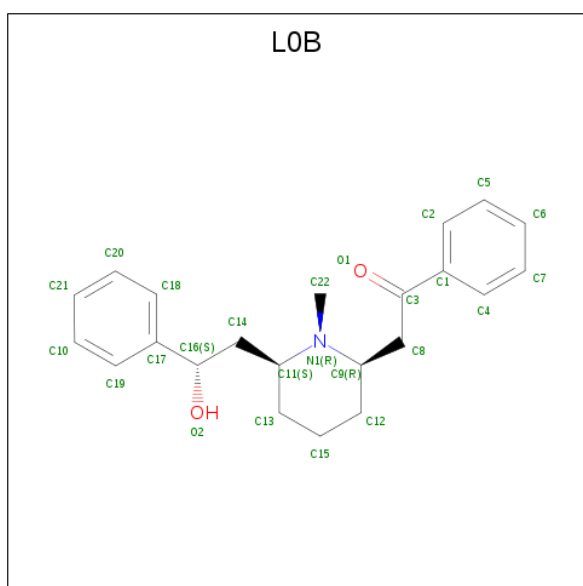
Mol	Chain	Residues	Atoms				ZeroOcc	AltConf	Trace
			Total	C	N	O			
2	F	4	Total 50	C 28	N 2	O 20	0	0	0

- Molecule 3 is an oligosaccharide called 2-acetamido-2-deoxy-beta-D-glucopyranose-(1-4)-2-acetamido-2-deoxy-beta-D-glucopyranose.



Mol	Chain	Residues	Atoms				ZeroOcc	AltConf	Trace
3	G	2	Total	C	N	O	0	0	0
			28	16	2	10			
3	H	2	Total	C	N	O	0	0	0
			28	16	2	10			
3	I	2	Total	C	N	O	0	0	0
			28	16	2	10			
3	J	2	Total	C	N	O	0	0	0
			28	16	2	10			

- Molecule 4 is Alpha-Lobeline (three-letter code: L0B) (formula: C₂₂H₂₇NO₂).



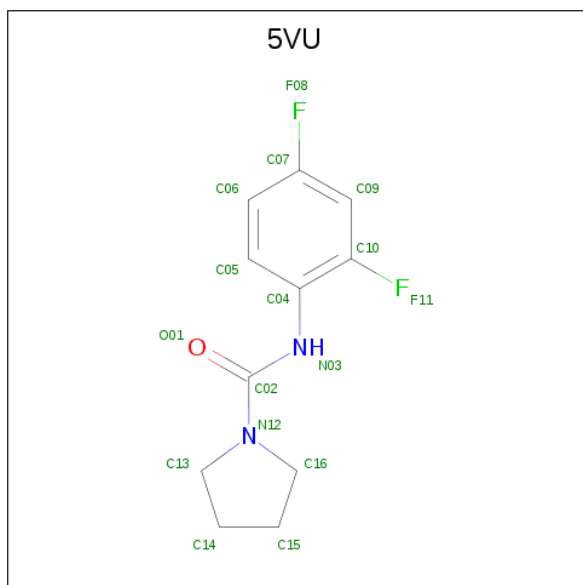
Mol	Chain	Residues	Atoms				ZeroOcc	AltConf
4	A	1	Total	C	N	O	0	0
			25	22	1	2		
4	B	1	Total	C	N	O	0	0
			25	22	1	2		
4	C	1	Total	C	N	O	0	0
			25	22	1	2		
4	D	1	Total	C	N	O	0	0
			25	22	1	2		
4	E	1	Total	C	N	O	0	0
			25	22	1	2		

- Molecule 5 is GLYCEROL (three-letter code: GOL) (formula: C₃H₈O₃).



Mol	Chain	Residues	Atoms			ZeroOcc	AltConf
5	A	1	Total	C	O	0	0
			6	3	3		
5	B	1	Total	C	O	0	0
			6	3	3		
5	C	1	Total	C	O	0	0
			6	3	3		
5	C	1	Total	C	O	0	0
			6	3	3		
5	E	1	Total	C	O	0	0
			6	3	3		

- Molecule 6 is N-(2,4-difluorophenyl)pyrrolidine-1-carboxamide (three-letter code: 5VU) (formula: C₁₁H₁₂F₂N₂O).



Mol	Chain	Residues	Atoms					ZeroOcc	AltConf
			Total	C	F	N	O		
6	A	1	Total 16	11	2	2	1	0	0
6	B	1	Total 16	11	2	2	1	0	0
6	C	1	Total 16	11	2	2	1	0	0
6	D	1	Total 16	11	2	2	1	0	0
6	E	1	Total 16	11	2	2	1	0	0
6	E	1	Total 16	11	2	2	1	0	0

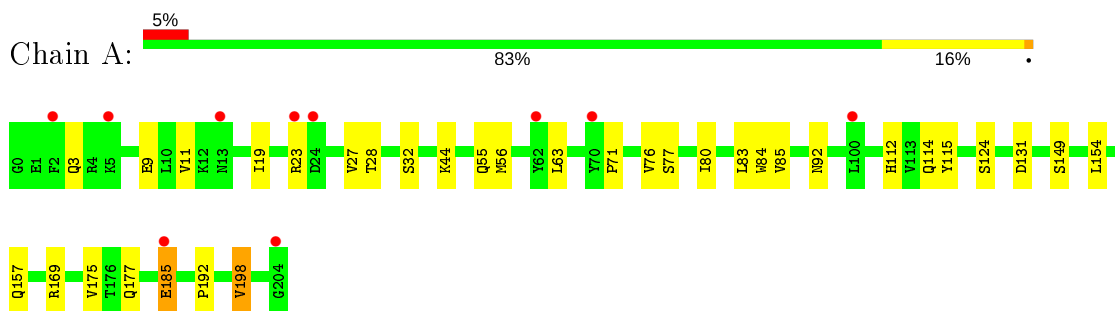
- Molecule 7 is water.

Mol	Chain	Residues	Atoms		ZeroOcc	AltConf
7	A	91	Total 91	O 91	0	0
7	B	67	Total 67	O 67	0	0
7	C	39	Total 39	O 39	0	0
7	D	57	Total 57	O 57	0	0
7	E	76	Total 76	O 76	0	0

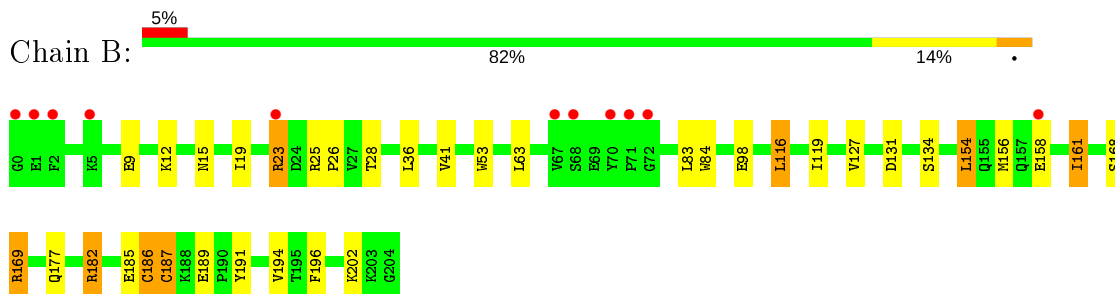
3 Residue-property plots [i](#)

These plots are drawn for all protein, RNA, DNA and oligosaccharide chains in the entry. The first graphic for a chain summarises the proportions of the various outlier classes displayed in the second graphic. The second graphic shows the sequence view annotated by issues in geometry and electron density. Residues are color-coded according to the number of geometric quality criteria for which they contain at least one outlier: green = 0, yellow = 1, orange = 2 and red = 3 or more. A red dot above a residue indicates a poor fit to the electron density ($RSRZ > 2$). Stretches of 2 or more consecutive residues without any outlier are shown as a green connector. Residues present in the sample, but not in the model, are shown in grey.

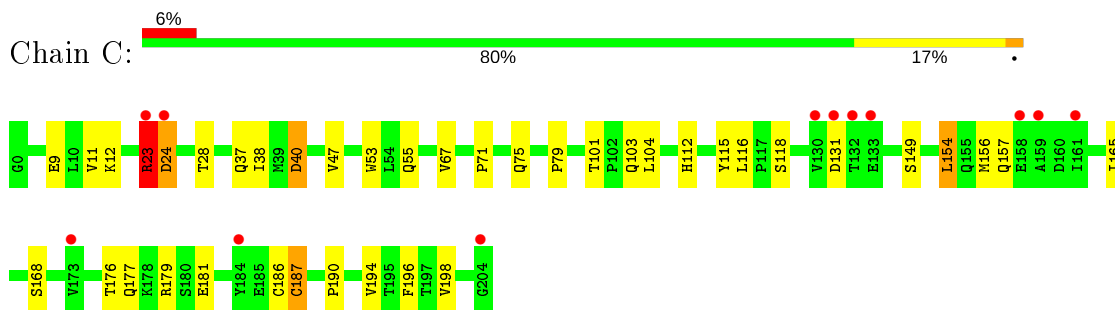
- Molecule 1: ACETYLCHOLINE-BINDING PROTEIN, NEURONAL ACETYLCHOLINE RECEPTOR SUBUNIT ALPHA-7



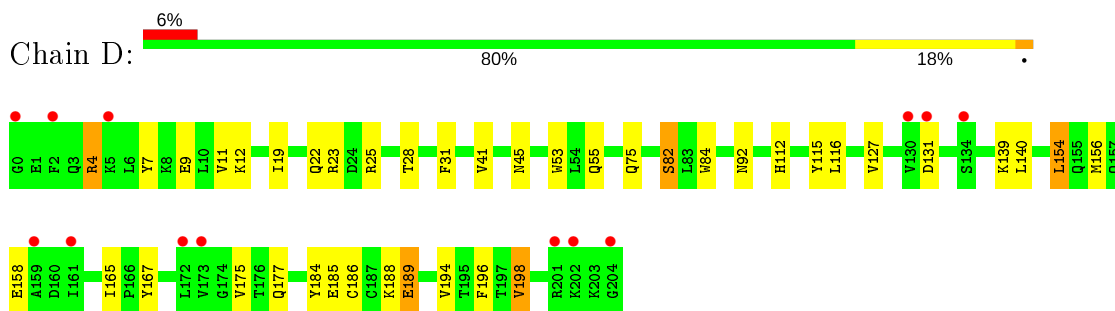
- Molecule 1: ACETYLCHOLINE-BINDING PROTEIN, NEURONAL ACETYLCHOLINE RECEPTOR SUBUNIT ALPHA-7



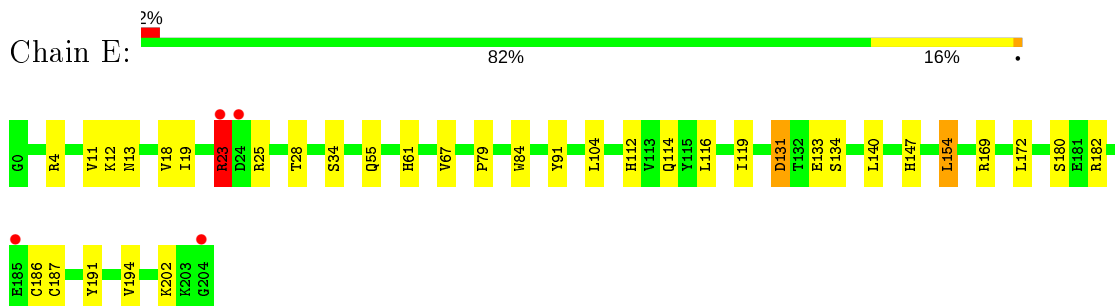
- Molecule 1: ACETYLCHOLINE-BINDING PROTEIN, NEURONAL ACETYLCHOLINE RECEPTOR SUBUNIT ALPHA-7



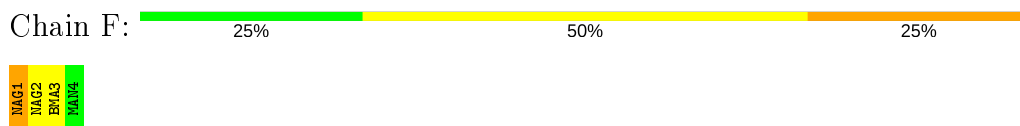
- Molecule 1: ACETYLCHOLINE-BINDING PROTEIN, NEURONAL ACETYLCHOLINE RECEPTOR SUBUNIT ALPHA-7



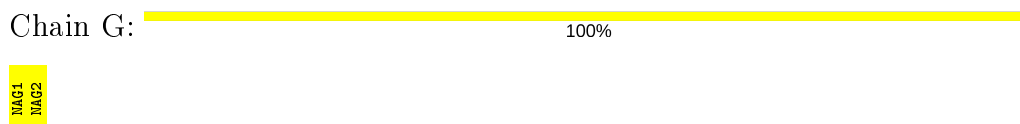
- Molecule 1: ACETYLCHOLINE-BINDING PROTEIN, NEURONAL ACETYLCHOLINE RECEPTOR SUBUNIT ALPHA-7



- Molecule 2: alpha-D-mannopyranose-(1-3)-beta-D-mannopyranose-(1-4)-2-acetamido-2-deoxy-beta-D-glucopyranose-(1-4)-2-acetamido-2-deoxy-beta-D-glucopyranose



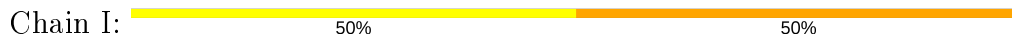
- Molecule 3: 2-acetamido-2-deoxy-beta-D-glucopyranose-(1-4)-2-acetamido-2-deoxy-beta-D-glucopyranose



- Molecule 3: 2-acetamido-2-deoxy-beta-D-glucopyranose-(1-4)-2-acetamido-2-deoxy-beta-D-glucopyranose



- Molecule 3: 2-acetamido-2-deoxy-beta-D-glucopyranose-(1-4)-2-acetamido-2-deoxy-beta-D-glucopyranose



MAG1
MAG2

- Molecule 3: 2-acetamido-2-deoxy-beta-D-glucopyranose-(1-4)-2-acetamido-2-deoxy-beta-D-glucopyranose

Chain J:  50% 50%

MAG1
MAG2

4 Data and refinement statistics

Property	Value	Source
Space group	P 21 21 21	Depositor
Cell constants a, b, c, α , β , γ	85.69Å 112.29Å 144.31Å 90.00° 90.00° 90.00°	Depositor
Resolution (Å)	36.84 – 2.38 46.96 – 2.38	Depositor EDS
% Data completeness (in resolution range)	98.5 (36.84-2.38) 88.4 (46.96-2.38)	Depositor EDS
R_{merge}	0.07	Depositor
R_{sym}	(Not available)	Depositor
$\langle I/\sigma(I) \rangle$ ¹	0.84 (at 2.39Å)	Xtrriage
Refinement program	PHENIX (PHENIX.REFINE)	Depositor
R, R_{free}	0.167 , 0.230 0.177 , 0.232	Depositor DCC
R_{free} test set	2840 reflections (5.10%)	wwPDB-VP
Wilson B-factor (Å ²)	53.4	Xtrriage
Anisotropy	0.466	Xtrriage
Bulk solvent k_{sol} (e/Å ³), B_{sol} (Å ²)	0.34 , 49.4	EDS
L-test for twinning ²	$\langle L \rangle = 0.47$, $\langle L^2 \rangle = 0.31$	Xtrriage
Estimated twinning fraction	No twinning to report.	Xtrriage
F_o, F_c correlation	0.96	EDS
Total number of atoms	9134	wwPDB-VP
Average B, all atoms (Å ²)	60.0	wwPDB-VP

Xtrriage's analysis on translational NCS is as follows: *The largest off-origin peak in the Patterson function is 3.19% of the height of the origin peak. No significant pseudotranslation is detected.*

¹Intensities estimated from amplitudes.

²Theoretical values of $\langle |L| \rangle$, $\langle L^2 \rangle$ for acentric reflections are 0.5, 0.333 respectively for untwinned datasets, and 0.375, 0.2 for perfectly twinned datasets.

5 Model quality [i](#)

5.1 Standard geometry [i](#)

Bond lengths and bond angles in the following residue types are not validated in this section: GOL, BMA, NAG, 5VU, L0B, MAN

The Z score for a bond length (or angle) is the number of standard deviations the observed value is removed from the expected value. A bond length (or angle) with $|Z| > 5$ is considered an outlier worth inspection. RMSZ is the root-mean-square of all Z scores of the bond lengths (or angles).

Mol	Chain	Bond lengths		Bond angles	
		RMSZ	# Z >5	RMSZ	# Z >5
1	A	0.43	0/1732	0.57	0/2356
1	B	0.41	0/1715	0.57	0/2333
1	C	0.36	0/1732	0.54	0/2355
1	D	0.40	0/1722	0.54	0/2344
1	E	0.47	0/1715	0.62	0/2333
All	All	0.41	0/8616	0.57	0/11721

There are no bond length outliers.

There are no bond angle outliers.

There are no chirality outliers.

There are no planarity outliers.

5.2 Too-close contacts [i](#)

In the following table, the Non-H and H(model) columns list the number of non-hydrogen atoms and hydrogen atoms in the chain respectively. The H(added) column lists the number of hydrogen atoms added and optimized by MolProbity. The Clashes column lists the number of clashes within the asymmetric unit, whereas Symm-Clashes lists symmetry related clashes.

Mol	Chain	Non-H	H(model)	H(added)	Clashes	Symm-Clashes
1	A	1687	0	1649	46	0
1	B	1670	0	1632	19	0
1	C	1687	0	1646	31	0
1	D	1677	0	1641	23	0
1	E	1670	0	1632	27	0
2	F	50	0	43	1	0
3	G	28	0	25	0	0
3	H	28	0	25	1	0

Continued on next page...

Continued from previous page...

Mol	Chain	Non-H	H(model)	H(added)	Clashes	Symm-Clashes
3	I	28	0	25	3	0
3	J	28	0	25	1	0
4	A	25	0	27	3	0
4	B	25	0	27	1	0
4	C	25	0	27	2	0
4	D	25	0	27	2	0
4	E	25	0	27	4	0
5	A	6	0	8	0	0
5	B	6	0	8	1	0
5	C	12	0	16	7	0
5	E	6	0	8	1	0
6	A	16	0	12	1	0
6	B	16	0	12	0	0
6	C	16	0	12	0	0
6	D	16	0	12	2	0
6	E	32	0	24	39	0
7	A	91	0	0	8	0
7	B	67	0	0	6	0
7	C	39	0	0	5	0
7	D	57	0	0	2	0
7	E	76	0	0	3	0
All	All	9134	0	8590	153	0

The all-atom clashscore is defined as the number of clashes found per 1000 atoms (including hydrogen atoms). The all-atom clashscore for this structure is 9.

All (153) close contacts within the same asymmetric unit are listed below, sorted by their clash magnitude.

Atom-1	Atom-2	Interatomic distance (Å)	Clash overlap (Å)
1:A:76:VAL:HA	6:E:1207:5VU:C15	1.40	1.47
1:A:76:VAL:CA	6:E:1207:5VU:H151	1.62	1.30
1:A:76:VAL:CA	6:E:1207:5VU:C15	2.12	1.26
1:A:77:SER:H	6:E:1207:5VU:C16	1.58	1.16
6:A:1207:5VU:F08	6:E:1207:5VU:H132	1.36	1.13
1:E:147:HIS:NE2	6:E:1207:5VU:F11	1.76	1.09
1:A:77:SER:H	6:E:1207:5VU:H161	1.01	1.07
1:C:37:GLN:HG3	5:C:1207:GOL:H11	1.38	1.04
1:A:76:VAL:CA	6:E:1207:5VU:H152	1.85	1.03
1:A:77:SER:N	6:E:1207:5VU:H161	1.73	1.03
1:A:76:VAL:CB	6:E:1207:5VU:H152	1.89	1.03
1:A:76:VAL:HG12	6:E:1207:5VU:H142	1.39	1.01

Continued on next page...

Continued from previous page...

Atom-1	Atom-2	Interatomic distance (Å)	Clash overlap (Å)
1:B:186:CYS:SG	1:B:187:CYS:N	2.37	0.97
1:E:84:TRP:HE1	6:E:1207:5VU:C10	1.83	0.92
1:E:186:CYS:SG	1:E:187:CYS:N	2.40	0.90
1:A:77:SER:H	6:E:1207:5VU:C15	1.85	0.90
1:E:147:HIS:NE2	6:E:1207:5VU:C10	2.37	0.86
1:A:76:VAL:HB	6:E:1207:5VU:H152	1.55	0.85
7:C:2006:HOH:O	1:D:4:ARG:NH1	2.13	0.82
1:A:3:GLN:HE21	6:E:1207:5VU:C14	1.92	0.82
1:A:3:GLN:NE2	6:E:1207:5VU:C14	2.44	0.80
1:A:77:SER:N	6:E:1207:5VU:C15	2.44	0.80
1:A:3:GLN:NE2	6:E:1207:5VU:H141	1.97	0.78
1:A:77:SER:HB2	6:E:1207:5VU:H03	1.48	0.78
1:A:77:SER:N	6:E:1207:5VU:C16	2.39	0.78
1:A:76:VAL:HG12	6:E:1207:5VU:C14	2.15	0.77
1:C:168:SER:HB2	5:C:1207:GOL:H12	1.70	0.72
1:D:184:TYR:O	1:D:186:CYS:N	2.21	0.72
1:E:187:CYS:O	7:E:2072:HOH:O	2.07	0.72
1:A:3:GLN:HE21	6:E:1207:5VU:H141	1.56	0.69
1:D:115:TYR:OH	7:D:2038:HOH:O	2.10	0.68
1:E:19:ILE:N	6:E:1207:5VU:O01	2.27	0.67
1:A:175:VAL:HG22	1:A:198:VAL:HB	1.76	0.67
1:A:76:VAL:CB	6:E:1207:5VU:C15	2.62	0.66
1:E:84:TRP:HE1	6:E:1207:5VU:C09	2.08	0.66
7:A:2004:HOH:O	1:E:12:LYS:O	2.14	0.66
1:A:3:GLN:HE21	6:E:1207:5VU:H142	1.59	0.66
1:E:84:TRP:NE1	6:E:1207:5VU:C09	2.59	0.65
1:A:76:VAL:HA	6:E:1207:5VU:H151	0.69	0.65
1:D:45:ASN:OD1	1:E:169:ARG:NH1	2.30	0.65
1:C:55:GLN:OE1	7:C:2016:HOH:O	2.14	0.64
1:C:154:LEU:HD13	1:C:194:VAL:HG23	1.80	0.64
1:D:154:LEU:HD13	1:D:194:VAL:HG23	1.78	0.64
1:C:103[B]:GLN:OE1	1:C:115:TYR:OH	2.11	0.63
1:A:77:SER:HB2	6:E:1207:5VU:N03	2.14	0.63
1:D:156:MET:SD	1:D:177:GLN:HB3	2.40	0.62
1:A:92:ASN:ND2	7:A:2052:HOH:O	2.33	0.61
1:E:154:LEU:HD13	1:E:194:VAL:HG23	1.82	0.61
4:D:1205:L0B:H6	1:E:114:GLN:HE22	1.65	0.61
1:A:76:VAL:C	6:E:1207:5VU:C15	2.69	0.61
1:C:156:MET:SD	1:C:177:GLN:HG2	2.41	0.61
4:A:1205:L0B:H21	7:A:2050:HOH:O	2.00	0.60
1:C:112:HIS:CD2	3:H:1:NAG:H62	2.36	0.60

Continued on next page...

Continued from previous page...

Atom-1	Atom-2	Interatomic distance (Å)	Clash overlap (Å)
1:E:112:HIS:CD2	3:J:1:NAG:H62	2.38	0.59
1:A:77:SER:CB	6:E:1207:5VU:H161	2.32	0.59
1:A:27:VAL:HB	7:A:2014:HOH:O	2.02	0.59
1:B:154:LEU:HD13	1:B:194:VAL:HG23	1.86	0.58
1:A:77:SER:N	6:E:1207:5VU:H152	2.19	0.58
1:C:181:GLU:HG2	1:C:190:PRO:HB2	1.86	0.57
1:C:38:ILE:O	5:C:1207:GOL:H2	2.04	0.57
3:I:1:NAG:H61	3:I:2:NAG:H82	1.87	0.56
1:D:55:GLN:HG2	1:D:116:LEU:HD22	1.87	0.56
1:C:179:ARG:NH1	7:C:2038:HOH:O	2.29	0.55
1:D:82:SER:HB3	6:D:1206:5VU:H132	1.89	0.55
1:E:55:GLN:HG2	1:E:116:LEU:HD22	1.88	0.55
1:D:175:VAL:HG22	1:D:198:VAL:HB	1.89	0.54
1:C:168:SER:CB	5:C:1207:GOL:H12	2.38	0.54
1:C:186:CYS:SG	1:C:187:CYS:N	2.81	0.54
7:D:2056:HOH:O	3:I:2:NAG:O4	2.19	0.54
1:B:98:GLU:OE1	7:B:2035:HOH:O	2.19	0.54
1:C:11[B]:VAL:HG13	7:C:2001:HOH:O	2.08	0.54
1:D:112:HIS:CD2	3:I:1:NAG:H62	2.43	0.53
1:C:157:GLN:O	1:C:177:GLN:NE2	2.34	0.53
1:C:156:MET:HB3	1:C:177:GLN:HE21	1.74	0.53
1:A:80[B]:ILE:HD12	1:A:115:TYR:CZ	2.44	0.52
1:C:165:ILE:HD11	5:C:1207:GOL:H32	1.91	0.52
1:A:77:SER:CA	6:E:1207:5VU:H161	2.39	0.52
1:B:191:TYR:OH	7:B:2050:HOH:O	2.17	0.51
1:B:177:GLN:HG3	1:B:196:PHE:CE2	2.46	0.51
1:C:156:MET:HB3	1:C:177:GLN:NE2	2.25	0.51
1:D:165:ILE:HD12	1:D:167:TYR:CE1	2.44	0.51
1:E:79:PRO:HA	1:E:104:LEU:HD23	1.92	0.51
1:B:156:MET:SD	1:B:177:GLN:HG2	2.51	0.50
1:D:31:PHE:HE2	1:D:196:PHE:HE2	1.60	0.50
1:E:147:HIS:HE1	6:E:1207:5VU:H162	1.77	0.50
1:B:41:VAL:HG13	1:B:127:VAL:HG21	1.94	0.49
1:B:182:ARG:HD2	7:B:2047:HOH:O	2.11	0.49
1:A:63:LEU:HD11	1:A:83:LEU:HD22	1.94	0.49
1:C:101:THR:HG23	1:C:118:SER:HB3	1.95	0.49
1:B:131:ASP:OD1	1:B:202:LYS:HD2	2.13	0.49
1:D:188:LYS:HD3	1:D:189:GLU:HG3	1.94	0.48
1:C:177:GLN:HG3	1:C:196:PHE:CE1	2.49	0.48
1:C:38:ILE:H	5:C:1207:GOL:C1	2.24	0.48
1:A:19:ILE:HD11	7:A:2014:HOH:O	2.14	0.47

Continued on next page...

Continued from previous page...

Atom-1	Atom-2	Interatomic distance (Å)	Clash overlap (Å)
1:D:9:GLU:HA	1:D:12:LYS:HE2	1.97	0.47
4:C:1205:L0B:H223	4:C:1205:L0B:H141	1.76	0.47
1:A:76:VAL:C	6:E:1207:5VU:H152	2.33	0.47
1:A:76:VAL:HG12	6:E:1207:5VU:C15	2.45	0.47
7:B:2049:HOH:O	1:C:75:GLN:NE2	2.49	0.46
1:E:131:ASP:OD2	1:E:202:LYS:HD2	2.15	0.46
1:B:15:ASN:HB3	7:B:2009:HOH:O	2.17	0.45
1:D:92:ASN:ND2	1:D:139:LYS:O	2.46	0.45
1:D:7:TYR:CZ	1:D:11:VAL:HG21	2.52	0.45
1:C:53:TRP:HE1	1:C:116:LEU:HB3	1.81	0.45
1:A:32:SER:OG	1:A:55:GLN:HB2	2.16	0.45
1:C:79:PRO:HA	1:C:104:LEU:HD23	1.99	0.45
1:A:44:LYS:HE3	1:B:169:ARG:NH1	2.32	0.45
1:A:80[B]:ILE:CD1	1:A:85:VAL:HG11	2.47	0.45
1:B:9:GLU:O	1:B:12:LYS:HG2	2.16	0.45
1:D:19:ILE:HG13	1:D:84:TRP:CZ2	2.52	0.45
1:A:124:SER:N	7:A:2052:HOH:O	2.50	0.44
1:E:23:ARG:O	1:E:25:ARG:N	2.42	0.44
1:A:32:SER:HB3	1:A:157:GLN:HB2	1.98	0.44
7:C:2033:HOH:O	1:D:75:GLN:NE2	2.51	0.44
1:E:91:TYR:CZ	4:E:1205:L0B:H131	2.52	0.44
1:E:61:HIS:ND1	7:E:2017:HOH:O	2.36	0.44
1:B:161:ILE:HA	1:B:161:ILE:HD12	1.64	0.43
4:E:1205:L0B:N1	4:E:1205:L0B:O1	2.49	0.43
7:B:2024:HOH:O	1:C:40:ASP:HA	2.17	0.43
1:A:149:SER:OG	1:A:192:PRO:HD3	2.19	0.43
1:C:23:ARG:HH11	1:C:23:ARG:HA	1.84	0.43
1:C:9:GLU:HA	1:C:12:LYS:HE3	2.01	0.43
1:A:19:ILE:HG13	1:A:84:TRP:CZ2	2.54	0.43
1:B:119:ILE:HD13	5:B:1206:GOL:H12	2.00	0.43
1:C:149:SER:OG	1:C:190:PRO:HG2	2.18	0.43
1:B:36:LEU:HD11	1:B:53:TRP:HB2	2.01	0.43
1:C:38:ILE:N	5:C:1207:GOL:O1	2.30	0.42
1:E:18:VAL:HA	6:E:1207:5VU:O01	2.19	0.42
1:E:119:ILE:HD13	5:E:1206:GOL:H12	2.02	0.42
4:D:1205:L0B:H141	4:D:1205:L0B:H223	1.83	0.42
1:C:154:LEU:HD23	1:C:154:LEU:HA	1.88	0.42
1:D:22:GLN:OE1	1:D:25:ARG:HD2	2.19	0.42
1:E:23:ARG:O	1:E:23:ARG:HG3	2.20	0.42
4:C:1205:L0B:H19	1:D:53:TRP:CE2	2.55	0.42
4:B:1205:L0B:H10	1:C:53:TRP:CG	2.55	0.41

Continued on next page...

Continued from previous page...

Atom-1	Atom-2	Interatomic distance (Å)	Clash overlap (Å)
1:B:25:ARG:HA	1:B:26:PRO:HD2	1.86	0.41
1:C:23:ARG:HD2	1:C:23:ARG:HA	1.77	0.41
1:D:158:GLU:N	1:D:158:GLU:OE1	2.54	0.41
1:A:76:VAL:CG1	6:E:1207:5VU:C15	2.98	0.41
1:D:11:VAL:HG22	6:D:1206:5VU:H141	2.02	0.41
1:D:41:VAL:HG13	1:D:127:VAL:HG21	2.02	0.41
1:A:112:HIS:CD2	2:F:1:NAG:H62	2.55	0.41
1:E:182:ARG:HD2	7:E:2073:HOH:O	2.21	0.41
7:A:2004:HOH:O	1:E:13:ASN:HB2	2.20	0.41
7:A:2042:HOH:O	1:E:187:CYS:HB3	2.21	0.41
4:A:1205:L0B:O1	4:A:1205:L0B:N1	2.54	0.41
1:B:19:ILE:HG13	1:B:84:TRP:CZ2	2.56	0.41
1:A:114:GLN:OE1	4:E:1205:L0B:H6	2.21	0.40
4:A:1205:L0B:H223	4:A:1205:L0B:H141	1.87	0.40
1:B:53:TRP:HE1	1:B:116:LEU:HB3	1.86	0.40
1:B:63:LEU:HD11	1:B:83:LEU:HD22	2.04	0.40
1:E:191:TYR:CE2	4:E:1205:L0B:H121	2.56	0.40
1:A:56:MET:HB2	1:A:56:MET:HE2	1.98	0.40

There are no symmetry-related clashes.

5.3 Torsion angles [i](#)

5.3.1 Protein backbone [i](#)

In the following table, the Percentiles column shows the percent Ramachandran outliers of the chain as a percentile score with respect to all X-ray entries followed by that with respect to entries of similar resolution.

The Analysed column shows the number of residues for which the backbone conformation was analysed, and the total number of residues.

Mol	Chain	Analysed	Favoured	Allowed	Outliers	Percentiles	
1	A	205/205 (100%)	200 (98%)	2 (1%)	3 (2%)	10	12
1	B	203/205 (99%)	193 (95%)	8 (4%)	2 (1%)	15	21
1	C	205/205 (100%)	201 (98%)	1 (0%)	3 (2%)	10	12
1	D	204/205 (100%)	199 (98%)	4 (2%)	1 (0%)	29	39
1	E	203/205 (99%)	196 (97%)	6 (3%)	1 (0%)	29	39
All	All	1020/1025 (100%)	989 (97%)	21 (2%)	10 (1%)	15	21

All (10) Ramachandran outliers are listed below:

Mol	Chain	Res	Type
1	C	23	ARG
1	D	185	GLU
1	A	23	ARG
1	A	185	GLU
1	C	24	ASP
1	E	23	ARG
1	B	23	ARG
1	B	186	CYS
1	A	71	PRO
1	C	71	PRO

5.3.2 Protein sidechains [i](#)

In the following table, the Percentiles column shows the percent sidechain outliers of the chain as a percentile score with respect to all X-ray entries followed by that with respect to entries of similar resolution.

The Analysed column shows the number of residues for which the sidechain conformation was analysed, and the total number of residues.

Mol	Chain	Analysed	Rotameric	Outliers	Percentiles	
1	A	192/190 (101%)	183 (95%)	9 (5%)	26	39
1	B	190/190 (100%)	177 (93%)	13 (7%)	16	23
1	C	192/190 (101%)	181 (94%)	11 (6%)	20	30
1	D	191/190 (100%)	182 (95%)	9 (5%)	26	39
1	E	190/190 (100%)	177 (93%)	13 (7%)	16	23
All	All	955/950 (100%)	900 (94%)	55 (6%)	20	30

All (55) residues with a non-rotameric sidechain are listed below:

Mol	Chain	Res	Type
1	A	9	GLU
1	A	11	VAL
1	A	28	THR
1	A	131	ASP
1	A	154	LEU
1	A	169	ARG
1	A	177	GLN
1	A	185	GLU

Continued on next page...

Continued from previous page...

Mol	Chain	Res	Type
1	A	198	VAL
1	B	23	ARG
1	B	28	THR
1	B	116	LEU
1	B	134	SER
1	B	154	LEU
1	B	158	GLU
1	B	161	ILE
1	B	168	SER
1	B	169	ARG
1	B	182	ARG
1	B	185	GLU
1	B	187	CYS
1	B	189	GLU
1	C	23	ARG
1	C	24	ASP
1	C	28	THR
1	C	40	ASP
1	C	47	VAL
1	C	67	VAL
1	C	131	ASP
1	C	154	LEU
1	C	176	THR
1	C	187	CYS
1	C	198	VAL
1	D	4	ARG
1	D	23	ARG
1	D	28	THR
1	D	82	SER
1	D	131	ASP
1	D	140	LEU
1	D	154	LEU
1	D	189	GLU
1	D	198	VAL
1	E	4	ARG
1	E	11	VAL
1	E	23	ARG
1	E	28	THR
1	E	34	SER
1	E	67	VAL
1	E	131	ASP
1	E	133	GLU

Continued on next page...

Continued from previous page...

Mol	Chain	Res	Type
1	E	134	SER
1	E	140	LEU
1	E	154	LEU
1	E	172	LEU
1	E	180	SER

Some sidechains can be flipped to improve hydrogen bonding and reduce clashes. There are no such sidechains identified.

5.3.3 RNA [i](#)

There are no RNA molecules in this entry.

5.4 Non-standard residues in protein, DNA, RNA chains [i](#)

There are no non-standard protein/DNA/RNA residues in this entry.

5.5 Carbohydrates [i](#)

12 monosaccharides are modelled in this entry.

In the following table, the Counts columns list the number of bonds (or angles) for which Mogul statistics could be retrieved, the number of bonds (or angles) that are observed in the model and the number of bonds (or angles) that are defined in the Chemical Component Dictionary. The Link column lists molecule types, if any, to which the group is linked. The Z score for a bond length (or angle) is the number of standard deviations the observed value is removed from the expected value. A bond length (or angle) with $|Z| > 2$ is considered an outlier worth inspection. RMSZ is the root-mean-square of all Z scores of the bond lengths (or angles).

Mol	Type	Chain	Res	Link	Bond lengths			Bond angles		
					Counts	RMSZ	$\# Z > 2$	Counts	RMSZ	$\# Z > 2$
2	NAG	F	1	1,2	14,14,15	0.50	0	17,19,21	1.21	2 (11%)
2	NAG	F	2	2	14,14,15	0.53	0	17,19,21	0.87	1 (5%)
2	BMA	F	3	2	11,11,12	0.31	0	15,15,17	0.96	1 (6%)
2	MAN	F	4	2	11,11,12	0.63	0	15,15,17	0.93	0
3	NAG	G	1	1,3	14,14,15	0.51	0	17,19,21	1.66	3 (17%)
3	NAG	G	2	3	14,14,15	0.50	0	17,19,21	0.80	1 (5%)
3	NAG	H	1	1,3	14,14,15	0.58	0	17,19,21	0.94	0
3	NAG	H	2	3	14,14,15	0.52	0	17,19,21	0.80	0
3	NAG	I	1	1,3	14,14,15	0.59	0	17,19,21	0.89	1 (5%)

Mol	Type	Chain	Res	Link	Bond lengths			Bond angles		
					Counts	RMSZ	# Z > 2	Counts	RMSZ	# Z > 2
3	NAG	I	2	3	14,14,15	0.54	0	17,19,21	0.92	0
3	NAG	J	1	1,3	14,14,15	0.76	0	17,19,21	1.59	2 (11%)
3	NAG	J	2	3	14,14,15	0.52	0	17,19,21	0.90	1 (5%)

In the following table, the Chirals column lists the number of chiral outliers, the number of chiral centers analysed, the number of these observed in the model and the number defined in the Chemical Component Dictionary. Similar counts are reported in the Torsion and Rings columns. '-' means no outliers of that kind were identified.

Mol	Type	Chain	Res	Link	Chirals	Torsions	Rings
2	NAG	F	1	1,2	-	0/6/23/26	0/1/1/1
2	NAG	F	2	2	-	1/6/23/26	0/1/1/1
2	BMA	F	3	2	1/1/4/5	2/2/19/22	0/1/1/1
2	MAN	F	4	2	1/1/4/5	2/2/19/22	1/1/1/1
3	NAG	G	1	1,3	-	0/6/23/26	0/1/1/1
3	NAG	G	2	3	-	0/6/23/26	0/1/1/1
3	NAG	H	1	1,3	-	0/6/23/26	0/1/1/1
3	NAG	H	2	3	-	2/6/23/26	0/1/1/1
3	NAG	I	1	1,3	-	0/6/23/26	0/1/1/1
3	NAG	I	2	3	1/1/5/7	4/6/23/26	0/1/1/1
3	NAG	J	1	1,3	-	0/6/23/26	0/1/1/1
3	NAG	J	2	3	1/1/5/7	2/6/23/26	0/1/1/1

There are no bond length outliers.

All (12) bond angle outliers are listed below:

Mol	Chain	Res	Type	Atoms	Z	Observed(°)	Ideal(°)
3	J	1	NAG	C2-N2-C7	-4.73	116.17	122.90
3	G	1	NAG	C4-C3-C2	-3.74	105.53	111.02
3	G	1	NAG	C1-O5-C5	3.63	117.10	112.19
3	J	1	NAG	C6-C5-C4	-2.99	106.00	113.00
3	G	1	NAG	C2-N2-C7	-2.72	119.02	122.90
2	F	1	NAG	C4-C3-C2	-2.65	107.14	111.02
3	J	2	NAG	C1-O5-C5	2.64	115.77	112.19
2	F	1	NAG	O5-C5-C6	2.40	110.97	107.20
2	F	3	BMA	C1-C2-C3	2.38	112.59	109.67
3	I	1	NAG	C1-O5-C5	2.37	115.40	112.19
3	G	2	NAG	C1-O5-C5	2.21	115.18	112.19
2	F	2	NAG	C6-C5-C4	-2.20	107.85	113.00

All (4) chirality outliers are listed below:

Mol	Chain	Res	Type	Atom
2	F	4	MAN	C1
3	I	2	NAG	C1
3	J	2	NAG	C1
2	F	3	BMA	C1

All (13) torsion outliers are listed below:

Mol	Chain	Res	Type	Atoms
3	I	2	NAG	C3-C2-N2-C7
3	I	2	NAG	C8-C7-N2-C2
2	F	3	BMA	C4-C5-C6-O6
2	F	4	MAN	C4-C5-C6-O6
3	I	2	NAG	O7-C7-N2-C2
3	J	2	NAG	C8-C7-N2-C2
3	J	2	NAG	O7-C7-N2-C2
2	F	3	BMA	O5-C5-C6-O6
2	F	4	MAN	O5-C5-C6-O6
3	H	2	NAG	C8-C7-N2-C2
2	F	2	NAG	O5-C5-C6-O6
3	I	2	NAG	C1-C2-N2-C7
3	H	2	NAG	O7-C7-N2-C2

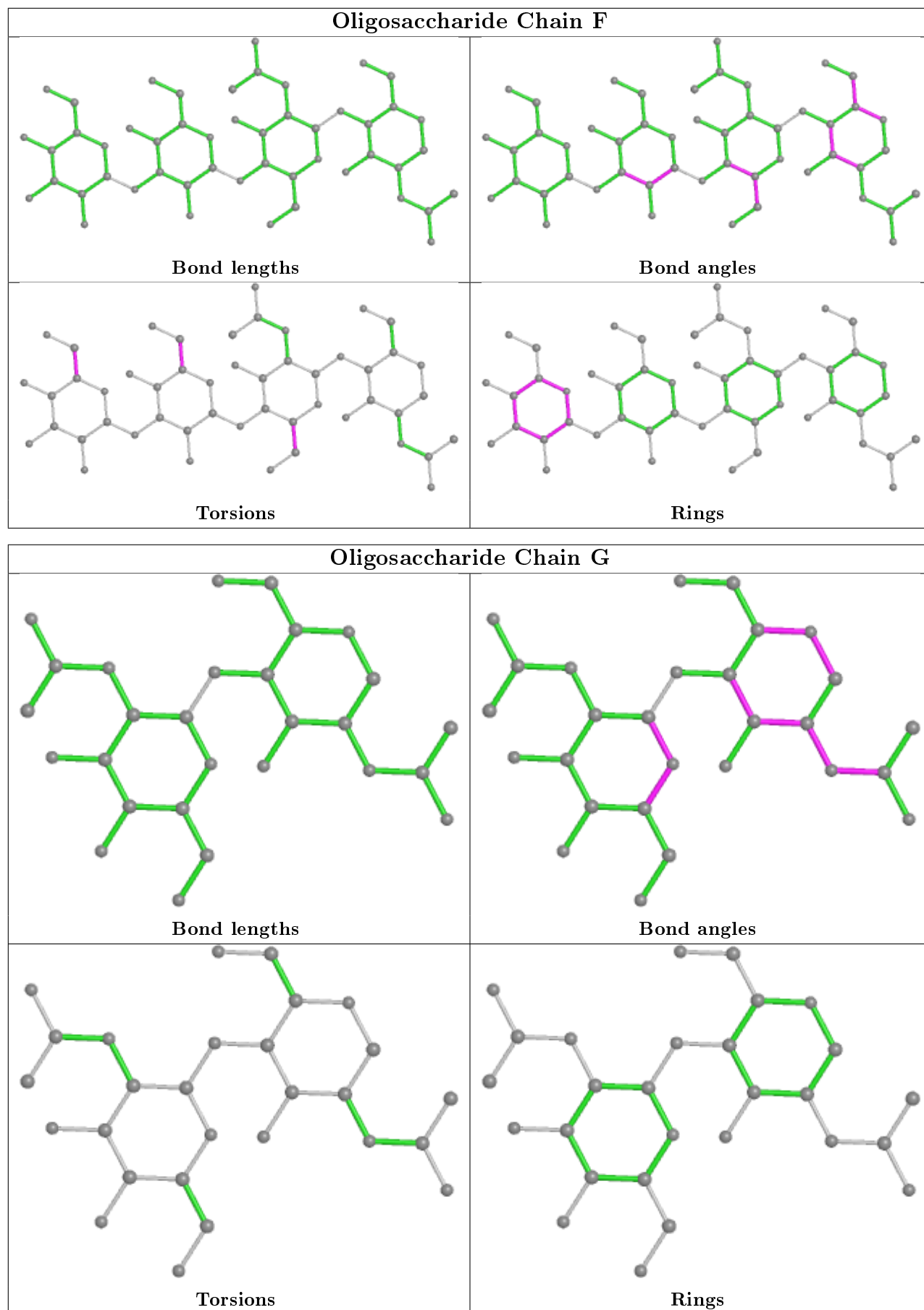
All (1) ring outliers are listed below:

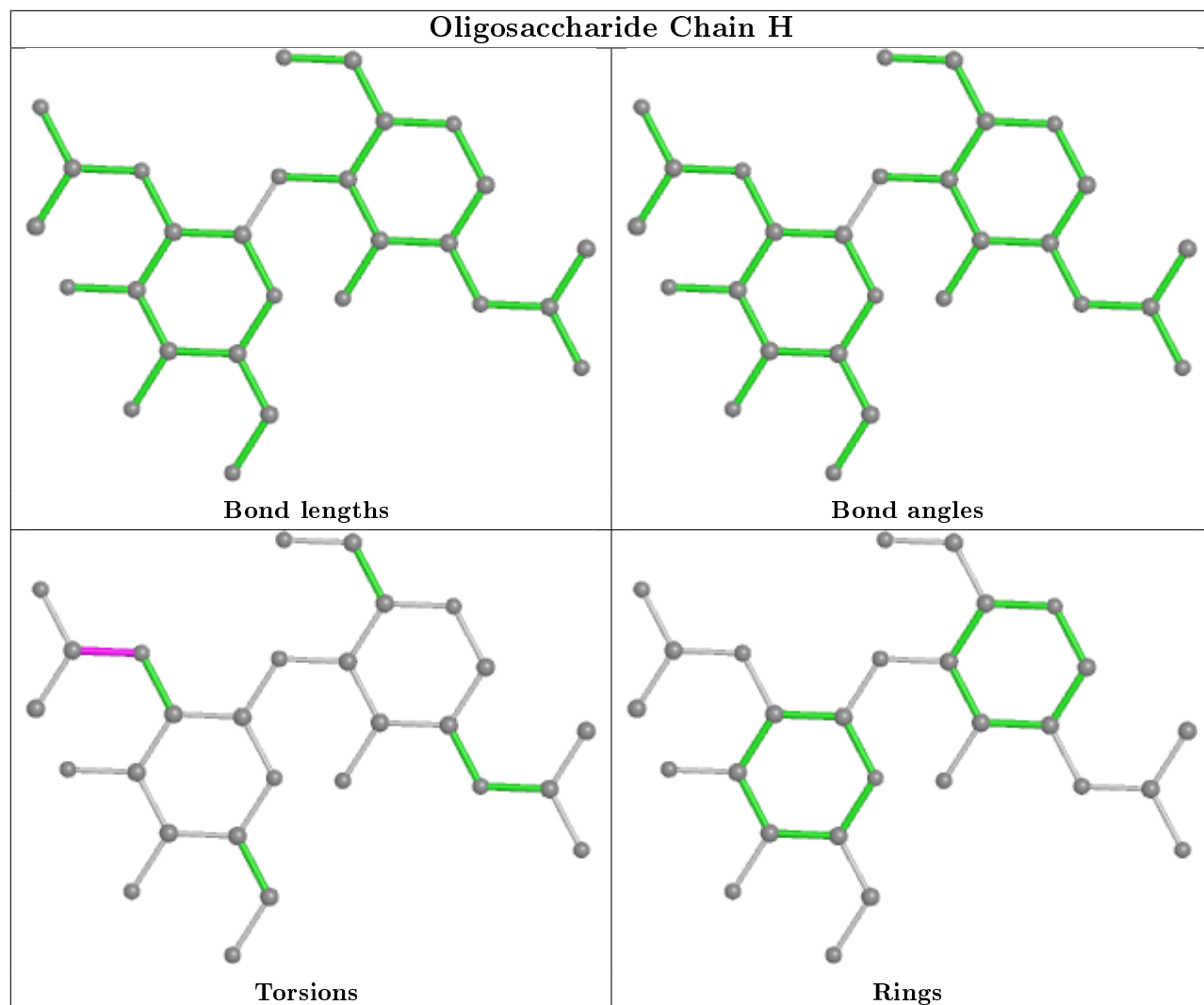
Mol	Chain	Res	Type	Atoms
2	F	4	MAN	C1-C2-C3-C4-C5-O5

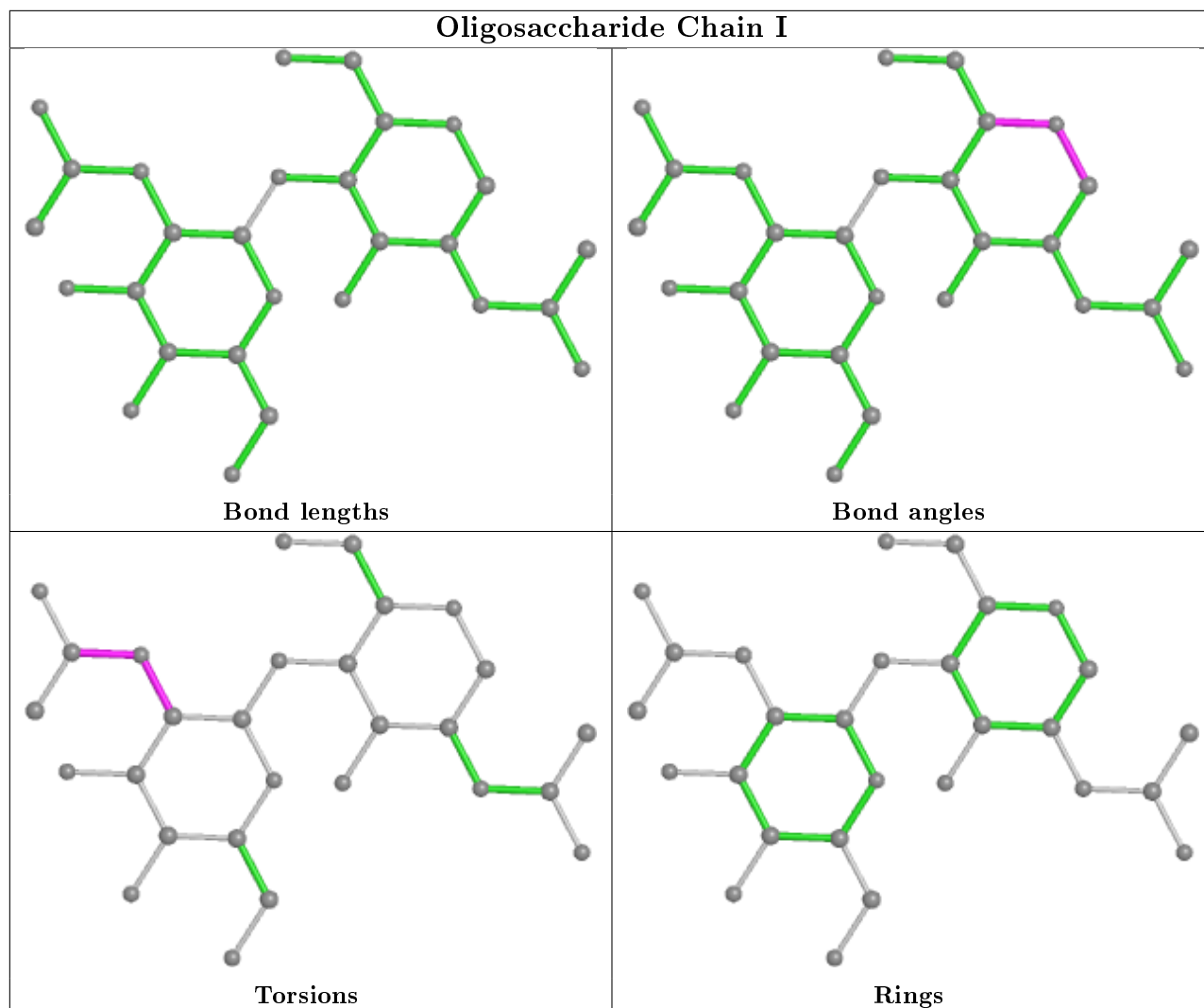
5 monomers are involved in 6 short contacts:

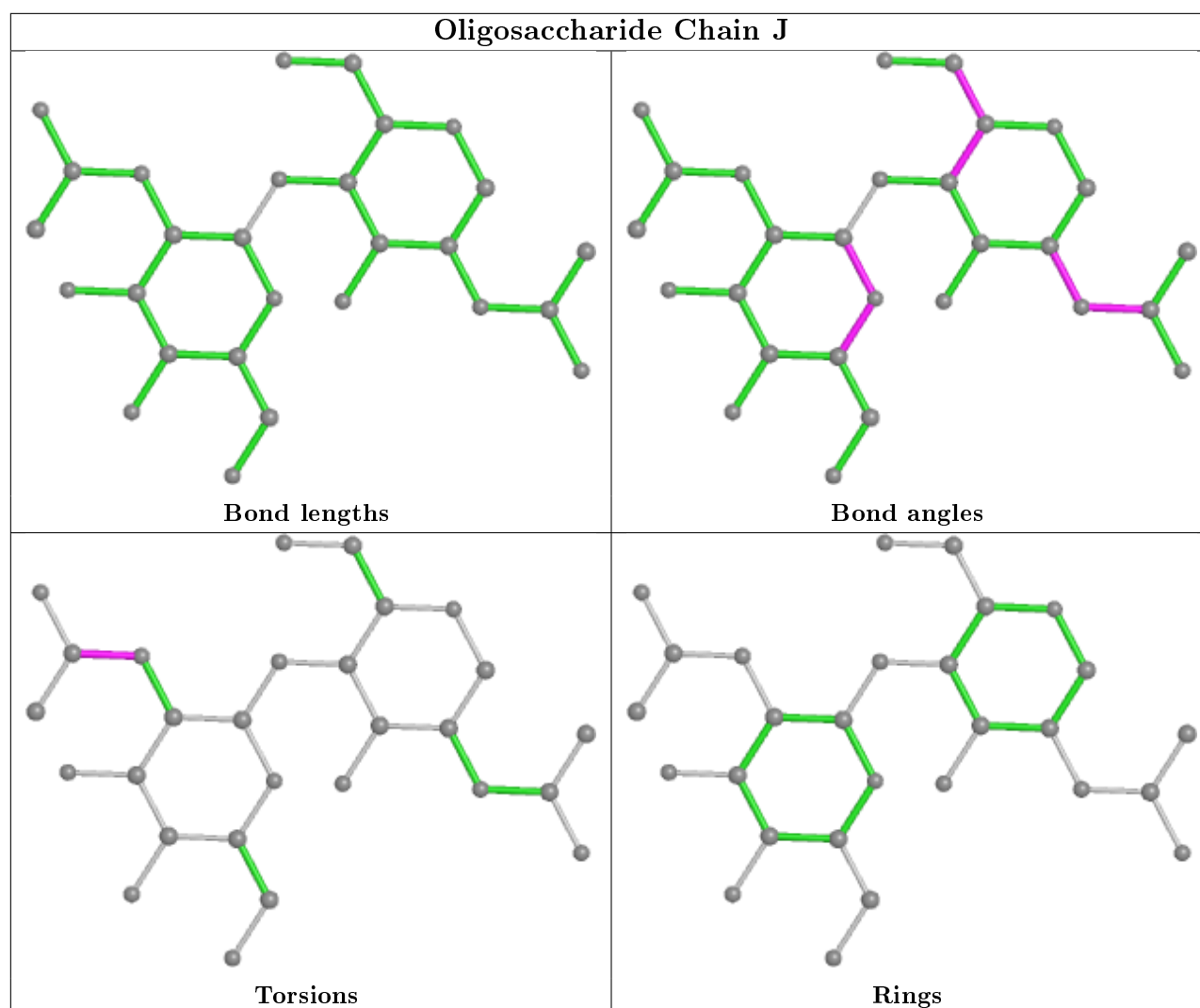
Mol	Chain	Res	Type	Clashes	Symm-Clashes
3	I	2	NAG	2	0
3	I	1	NAG	2	0
3	J	1	NAG	1	0
3	H	1	NAG	1	0
2	F	1	NAG	1	0

The following is a two-dimensional graphical depiction of Mogul quality analysis of bond lengths, bond angles, torsion angles, and ring geometry for oligosaccharide.









5.6 Ligand geometry [i](#)

16 ligands are modelled in this entry.

In the following table, the Counts columns list the number of bonds (or angles) for which Mogul statistics could be retrieved, the number of bonds (or angles) that are observed in the model and the number of bonds (or angles) that are defined in the Chemical Component Dictionary. The Link column lists molecule types, if any, to which the group is linked. The Z score for a bond length (or angle) is the number of standard deviations the observed value is removed from the expected value. A bond length (or angle) with $|Z| > 2$ is considered an outlier worth inspection. RMSZ is the root-mean-square of all Z scores of the bond lengths (or angles).

Mol	Type	Chain	Res	Link	Bond lengths			Bond angles		
					Counts	RMSZ	# Z > 2	Counts	RMSZ	# Z > 2
5	GOL	E	1206	-	5,5,5	0.37	0	5,5,5	0.34	0
6	5VU	E	1208	-	17,17,17	1.63	2 (11%)	23,23,23	1.56	6 (26%)
5	GOL	B	1206	-	5,5,5	0.42	0	5,5,5	0.43	0

Mol	Type	Chain	Res	Link	Bond lengths			Bond angles		
					Counts	RMSZ	# Z > 2	Counts	RMSZ	# Z > 2
5	GOL	A	1206	-	5,5,5	0.35	0	5,5,5	0.27	0
5	GOL	C	1206	-	5,5,5	0.37	0	5,5,5	0.21	0
6	5VU	D	1206	-	17,17,17	1.71	2 (11%)	23,23,23	1.76	7 (30%)
6	5VU	B	1207	-	17,17,17	1.65	2 (11%)	23,23,23	1.88	8 (34%)
4	L0B	C	1205	-	27,27,27	0.49	0	33,36,36	1.11	3 (9%)
4	L0B	D	1205	-	27,27,27	0.52	0	33,36,36	1.23	6 (18%)
4	L0B	A	1205	-	27,27,27	0.54	0	33,36,36	1.48	5 (15%)
4	L0B	B	1205	-	27,27,27	0.55	0	33,36,36	1.19	3 (9%)
6	5VU	E	1207	-	17,17,17	1.78	4 (23%)	23,23,23	1.84	6 (26%)
4	L0B	E	1205	-	27,27,27	0.56	0	33,36,36	1.66	6 (18%)
6	5VU	A	1207	-	17,17,17	1.71	2 (11%)	23,23,23	1.84	8 (34%)
5	GOL	C	1207	-	5,5,5	0.38	0	5,5,5	0.18	0
6	5VU	C	1208	-	17,17,17	1.82	3 (17%)	23,23,23	2.07	8 (34%)

In the following table, the Chirals column lists the number of chiral outliers, the number of chiral centers analysed, the number of these observed in the model and the number defined in the Chemical Component Dictionary. Similar counts are reported in the Torsion and Rings columns. '-' means no outliers of that kind were identified.

Mol	Type	Chain	Res	Link	Chirals	Torsions	Rings
5	GOL	E	1206	-	-	2/4/4/4	-
6	5VU	E	1208	-	-	0/8/15/15	0/2/2/2
5	GOL	B	1206	-	-	4/4/4/4	-
5	GOL	A	1206	-	-	4/4/4/4	-
5	GOL	C	1206	-	-	0/4/4/4	-
6	5VU	D	1206	-	-	0/8/15/15	0/2/2/2
6	5VU	B	1207	-	-	0/8/15/15	0/2/2/2
4	L0B	C	1205	-	-	2/16/30/30	0/3/3/3
4	L0B	D	1205	-	-	2/16/30/30	0/3/3/3
4	L0B	A	1205	-	-	2/16/30/30	0/3/3/3
4	L0B	B	1205	-	-	0/16/30/30	0/3/3/3
6	5VU	E	1207	-	-	2/8/15/15	0/2/2/2
4	L0B	E	1205	-	-	2/16/30/30	0/3/3/3
6	5VU	A	1207	-	-	0/8/15/15	0/2/2/2
5	GOL	C	1207	-	-	2/4/4/4	-
6	5VU	C	1208	-	-	0/8/15/15	0/2/2/2

All (15) bond length outliers are listed below:

Mol	Chain	Res	Type	Atoms	Z	Observed(Å)	Ideal(Å)
6	C	1208	5VU	C02-N03	4.62	1.45	1.37
6	D	1206	5VU	C02-N12	4.27	1.44	1.36
6	A	1207	5VU	C02-N03	4.27	1.44	1.37
6	B	1207	5VU	C02-N12	4.25	1.44	1.36
6	E	1208	5VU	C02-N03	4.14	1.44	1.37
6	D	1206	5VU	C02-N03	4.10	1.44	1.37
6	C	1208	5VU	C02-N12	4.06	1.44	1.36
6	A	1207	5VU	C02-N12	4.01	1.43	1.36
6	B	1207	5VU	C02-N03	3.96	1.44	1.37
6	E	1207	5VU	C02-N12	3.58	1.43	1.36
6	E	1208	5VU	C02-N12	3.55	1.43	1.36
6	E	1207	5VU	C02-N03	3.36	1.43	1.37
6	E	1207	5VU	C04-C10	-3.24	1.34	1.38
6	C	1208	5VU	C04-N03	2.25	1.46	1.41
6	E	1207	5VU	C16-N12	-2.21	1.42	1.47

All (66) bond angle outliers are listed below:

Mol	Chain	Res	Type	Atoms	Z	Observed(°)	Ideal(°)
6	A	1207	5VU	N03-C02-N12	4.77	121.35	115.89
6	C	1208	5VU	N03-C02-N12	4.77	121.35	115.89
4	A	1205	L0B	C12-C9-C8	-4.61	107.13	112.70
4	B	1205	L0B	C22-N1-C9	-4.31	109.67	113.16
4	E	1205	L0B	C22-N1-C9	-4.21	109.76	113.16
4	E	1205	L0B	C9-C8-C3	-4.12	105.84	112.86
4	E	1205	L0B	C14-C16-C17	-3.92	104.32	111.32
4	A	1205	L0B	C22-N1-C9	-3.71	110.16	113.16
4	A	1205	L0B	C14-C11-C13	-3.68	106.32	113.03
6	C	1208	5VU	C10-C09-C07	3.66	120.46	116.62
4	E	1205	L0B	C14-C11-C13	-3.56	106.54	113.03
6	C	1208	5VU	O01-C02-N12	-3.51	116.86	121.78
6	B	1207	5VU	C10-C09-C07	3.45	120.24	116.62
4	C	1205	L0B	C22-N1-C9	-3.43	110.38	113.16
6	B	1207	5VU	C09-C10-C04	-3.38	120.28	123.50
6	E	1207	5VU	C16-N12-C13	-3.37	106.71	111.34
6	D	1206	5VU	C10-C09-C07	3.36	120.15	116.62
6	B	1207	5VU	N03-C02-N12	3.26	119.62	115.89
6	E	1207	5VU	C10-C09-C07	3.24	120.02	116.62
4	D	1205	L0B	C22-N1-C9	-3.20	110.57	113.16
6	B	1207	5VU	C14-C13-N12	3.14	109.06	103.44
6	E	1207	5VU	C05-C04-C10	3.12	120.31	117.17
4	E	1205	L0B	C22-N1-C11	-3.08	110.66	113.16
6	C	1208	5VU	C06-C07-C09	-3.07	119.30	123.29

Continued on next page...

Continued from previous page...

Mol	Chain	Res	Type	Atoms	Z	Observed(°)	Ideal(°)
6	A	1207	5VU	O01-C02-N12	-3.06	117.48	121.78
6	D	1206	5VU	C06-C07-C09	-3.00	119.39	123.29
6	C	1208	5VU	C14-C13-N12	2.97	108.76	103.44
4	A	1205	L0B	C22-N1-C11	-2.96	110.76	113.16
6	E	1207	5VU	C04-N03-C02	2.95	133.16	125.52
4	D	1205	L0B	C12-C9-C8	-2.92	109.18	112.70
6	A	1207	5VU	C09-C10-C04	-2.87	120.77	123.50
6	E	1207	5VU	C06-C07-C09	-2.86	119.57	123.29
6	A	1207	5VU	C10-C09-C07	2.83	119.59	116.62
4	B	1205	L0B	C22-N1-C11	-2.81	110.88	113.16
6	D	1206	5VU	C16-N12-C13	-2.78	107.53	111.34
6	E	1208	5VU	N03-C02-N12	2.77	119.06	115.89
6	B	1207	5VU	C06-C07-C09	-2.70	119.78	123.29
4	A	1205	L0B	C14-C16-C17	-2.70	106.49	111.32
6	E	1208	5VU	C06-C07-C09	-2.68	119.81	123.29
4	C	1205	L0B	C22-N1-C11	-2.67	111.00	113.16
6	C	1208	5VU	C09-C10-C04	-2.63	121.00	123.50
4	E	1205	L0B	C12-C9-C8	-2.59	109.58	112.70
6	D	1206	5VU	C09-C10-C04	-2.59	121.04	123.50
6	E	1207	5VU	C09-C10-C04	-2.56	121.06	123.50
6	D	1206	5VU	N03-C02-N12	2.56	118.82	115.89
6	E	1208	5VU	C10-C09-C07	2.51	119.25	116.62
6	B	1207	5VU	C15-C16-N12	2.40	107.73	103.44
6	E	1208	5VU	C15-C16-N12	2.39	107.72	103.44
6	E	1208	5VU	C14-C13-N12	2.39	107.71	103.44
6	E	1208	5VU	O01-C02-N12	-2.31	118.55	121.78
6	C	1208	5VU	C15-C16-N12	2.26	107.48	103.44
6	C	1208	5VU	F11-C10-C04	2.23	120.31	117.50
6	A	1207	5VU	C14-C13-N12	2.22	107.41	103.44
6	D	1206	5VU	C04-N03-C02	2.19	131.19	125.52
6	A	1207	5VU	C06-C07-C09	-2.17	120.48	123.29
6	B	1207	5VU	C05-C04-C10	2.16	119.35	117.17
4	C	1205	L0B	C14-C11-C13	-2.15	109.11	113.03
6	D	1206	5VU	C15-C16-N12	2.12	107.24	103.44
4	D	1205	L0B	C9-C8-C3	-2.09	109.29	112.86
4	D	1205	L0B	C14-C16-C17	-2.09	107.58	111.32
6	A	1207	5VU	C15-C16-N12	2.08	107.17	103.44
6	A	1207	5VU	C16-N12-C13	-2.08	108.49	111.34
6	B	1207	5VU	F11-C10-C04	2.07	120.10	117.50
4	D	1205	L0B	C2-C1-C4	2.06	121.52	118.59
4	B	1205	L0B	C12-C9-C8	-2.06	110.22	112.70
4	D	1205	L0B	C22-N1-C11	-2.05	111.50	113.16

There are no chirality outliers.

All (22) torsion outliers are listed below:

Mol	Chain	Res	Type	Atoms
5	B	1206	GOL	O1-C1-C2-C3
5	B	1206	GOL	C1-C2-C3-O3
5	A	1206	GOL	O1-C1-C2-C3
5	A	1206	GOL	C1-C2-C3-O3
4	C	1205	L0B	N1-C11-C14-C16
4	D	1205	L0B	N1-C11-C14-C16
4	A	1205	L0B	C3-C8-C9-N1
4	E	1205	L0B	N1-C11-C14-C16
5	C	1207	GOL	C1-C2-C3-O3
6	E	1207	5VU	C10-C04-N03-C02
5	B	1206	GOL	O1-C1-C2-O2
5	B	1206	GOL	O2-C2-C3-O3
5	A	1206	GOL	O1-C1-C2-O2
5	A	1206	GOL	O2-C2-C3-O3
5	C	1207	GOL	O2-C2-C3-O3
4	C	1205	L0B	C13-C11-C14-C16
4	E	1205	L0B	C13-C11-C14-C16
6	E	1207	5VU	C05-C04-N03-C02
5	E	1206	GOL	O1-C1-C2-O2
5	E	1206	GOL	O1-C1-C2-C3
4	A	1205	L0B	C3-C8-C9-C12
4	D	1205	L0B	C13-C11-C14-C16

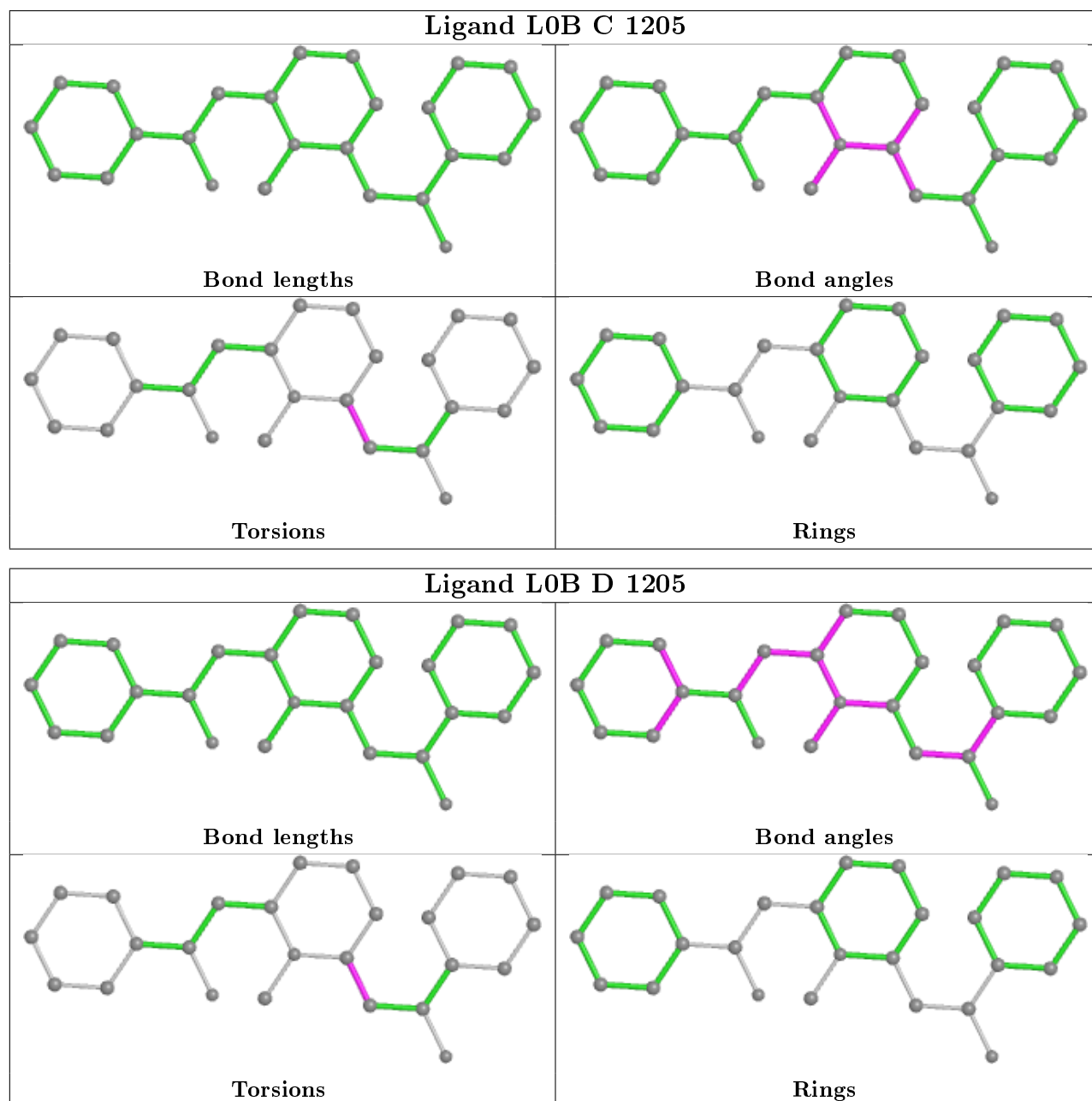
There are no ring outliers.

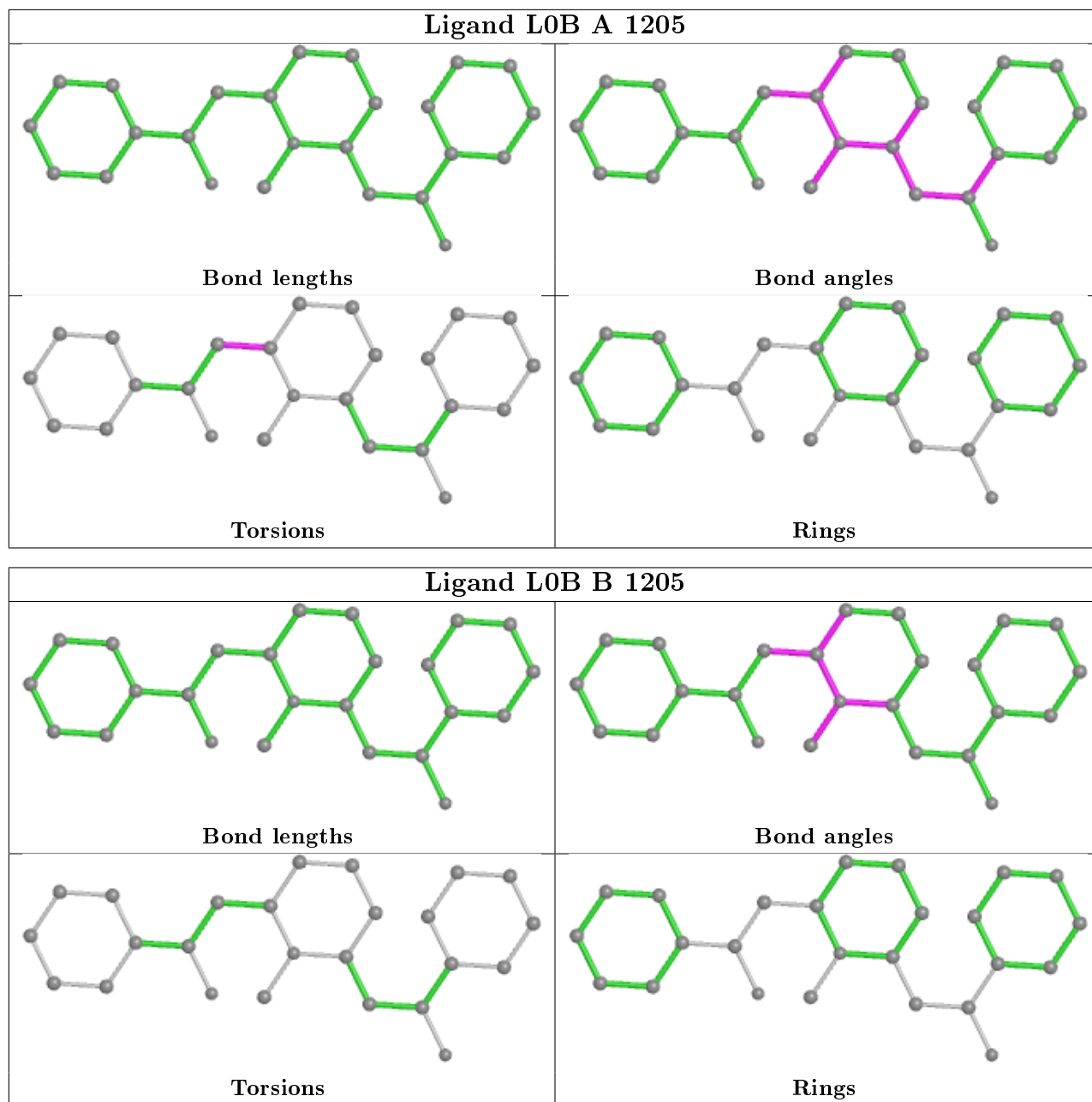
11 monomers are involved in 62 short contacts:

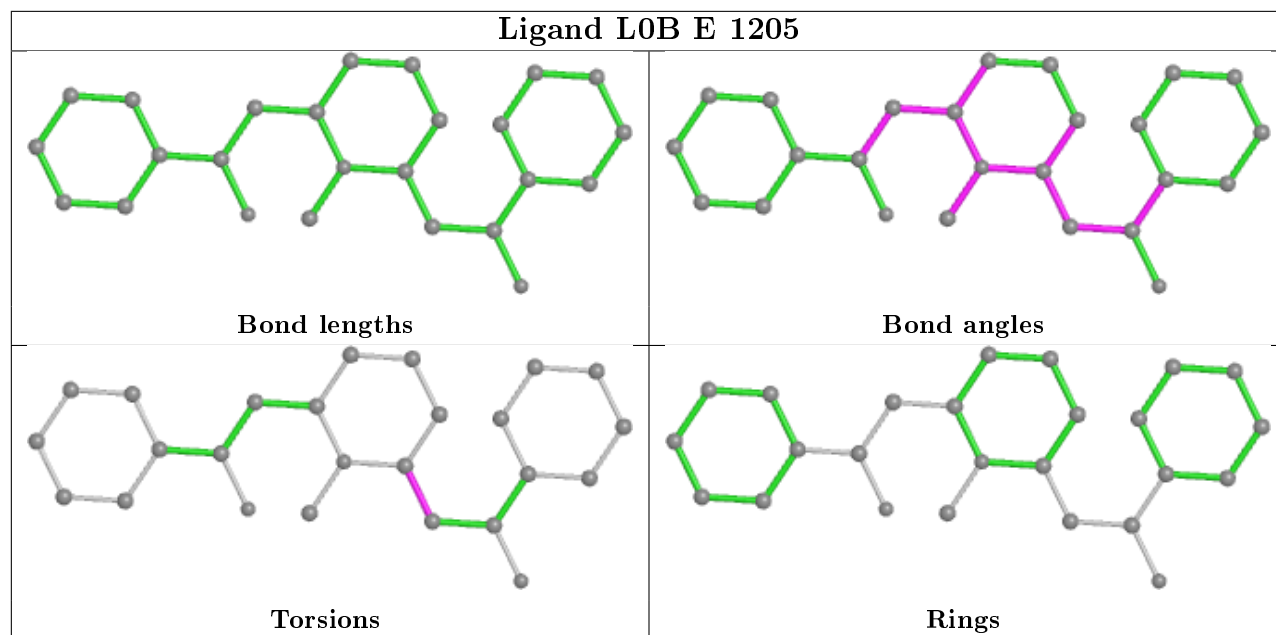
Mol	Chain	Res	Type	Clashes	Symm-Clashes
5	E	1206	GOL	1	0
5	B	1206	GOL	1	0
6	D	1206	5VU	2	0
4	C	1205	L0B	2	0
4	D	1205	L0B	2	0
4	A	1205	L0B	3	0
4	B	1205	L0B	1	0
6	E	1207	5VU	39	0
4	E	1205	L0B	4	0
6	A	1207	5VU	1	0
5	C	1207	GOL	7	0

The following is a two-dimensional graphical depiction of Mogul quality analysis of bond lengths,

bond angles, torsion angles, and ring geometry for all instances of the Ligand of Interest. In addition, ligands with molecular weight > 250 and outliers as shown on the validation Tables will also be included. For torsion angles, if less than 5% of the Mogul distribution of torsion angles is within 10 degrees of the torsion angle in question, then that torsion angle is considered an outlier. Any bond that is central to one or more torsion angles identified as an outlier by Mogul will be highlighted in the graph. For rings, the root-mean-square deviation (RMSD) between the ring in question and similar rings identified by Mogul is calculated over all ring torsion angles. If the average RMSD is greater than 60 degrees and the minimal RMSD between the ring in question and any Mogul-identified rings is also greater than 60 degrees, then that ring is considered an outlier. The outliers are highlighted in purple. The color gray indicates Mogul did not find sufficient equivalents in the CSD to analyse the geometry.







5.7 Other polymers [\(i\)](#)

There are no such residues in this entry.

5.8 Polymer linkage issues [\(i\)](#)

There are no chain breaks in this entry.

6 Fit of model and data

6.1 Protein, DNA and RNA chains

In the following table, the column labelled ‘#RSRZ> 2’ contains the number (and percentage) of RSRZ outliers, followed by percent RSRZ outliers for the chain as percentile scores relative to all X-ray entries and entries of similar resolution. The OWAB column contains the minimum, median, 95th percentile and maximum values of the occupancy-weighted average B-factor per residue. The column labelled ‘Q< 0.9’ lists the number of (and percentage) of residues with an average occupancy less than 0.9.

Mol	Chain	Analysed	<RSRZ>	#RSRZ>2	OWAB(Å ²)	Q<0.9
1	A	205/205 (100%)	0.45	10 (4%) 29 32	27, 49, 87, 121	0
1	B	205/205 (100%)	0.25	11 (5%) 25 28	28, 52, 101, 114	0
1	C	205/205 (100%)	0.43	12 (5%) 22 24	37, 68, 113, 142	0
1	D	205/205 (100%)	0.48	13 (6%) 20 21	33, 58, 96, 119	0
1	E	205/205 (100%)	0.18	4 (1%) 65 66	30, 47, 80, 113	0
All	All	1025/1025 (100%)	0.36	50 (4%) 29 32	27, 54, 97, 142	0

All (50) RSRZ outliers are listed below:

Mol	Chain	Res	Type	RSRZ
1	D	204	GLY	9.9
1	C	132	THR	5.4
1	C	204	GLY	4.3
1	B	23	ARG	4.3
1	C	161	ILE	4.2
1	D	131	ASP	4.1
1	E	24	ASP	4.0
1	D	172	LEU	3.9
1	A	23	ARG	3.9
1	D	130	VAL	3.8
1	D	173	VAL	3.7
1	C	173	VAL	3.5
1	D	159	ALA	3.5
1	D	161	ILE	3.4
1	B	0	GLY	3.4
1	B	158	GLU	3.3
1	A	204	GLY	3.1
1	A	24	ASP	3.1
1	D	2	PHE	3.1
1	D	134	SER	3.0

Continued on next page...

Continued from previous page...

Mol	Chain	Res	Type	RSRZ
1	B	5	LYS	2.9
1	B	71	PRO	2.9
1	A	62	TYR	2.8
1	C	158	GLU	2.8
1	C	133	GLU	2.7
1	C	23	ARG	2.7
1	E	204	GLY	2.7
1	B	68	SER	2.6
1	A	2	PHE	2.6
1	B	67	VAL	2.6
1	D	202	LYS	2.6
1	D	201	ARG	2.5
1	A	70	TYR	2.5
1	A	185	GLU	2.4
1	B	70	TYR	2.4
1	A	5	LYS	2.4
1	C	131	ASP	2.4
1	D	5	LYS	2.3
1	D	0	GLY	2.3
1	E	23	ARG	2.3
1	C	24	ASP	2.3
1	C	184	TYR	2.3
1	B	1	GLU	2.3
1	A	100	LEU	2.3
1	C	130	VAL	2.3
1	A	13	ASN	2.2
1	B	2	PHE	2.2
1	E	185	GLU	2.1
1	B	72	GLY	2.1
1	C	159	ALA	2.0

6.2 Non-standard residues in protein, DNA, RNA chains [i](#)

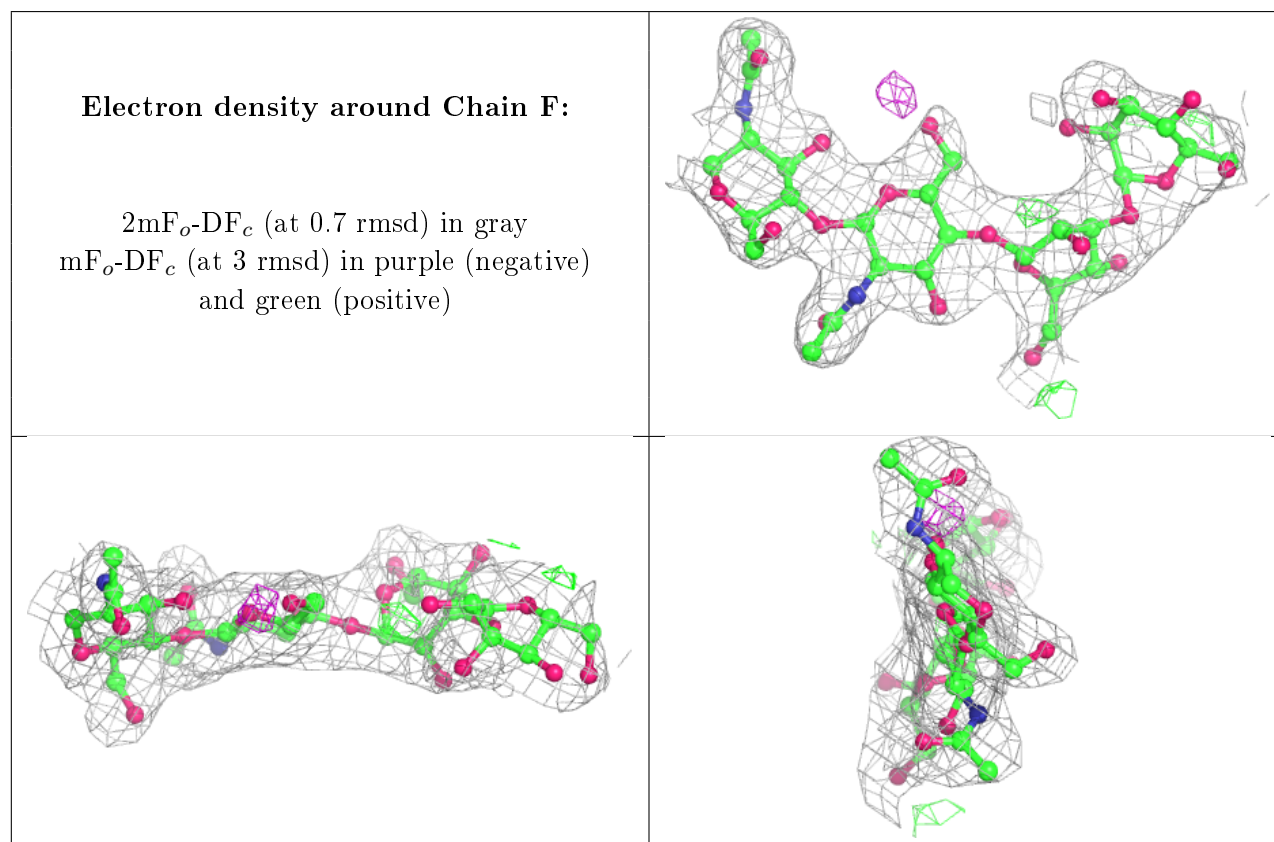
There are no non-standard protein/DNA/RNA residues in this entry.

6.3 Carbohydrates [i](#)

In the following table, the Atoms column lists the number of modelled atoms in the group and the number defined in the chemical component dictionary. The B-factors column lists the minimum, median, 95th percentile and maximum values of B factors of atoms in the group. The column labelled 'Q< 0.9' lists the number of atoms with occupancy less than 0.9.

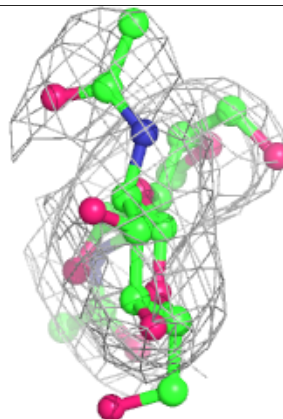
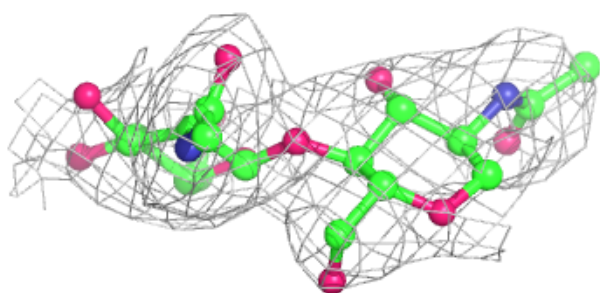
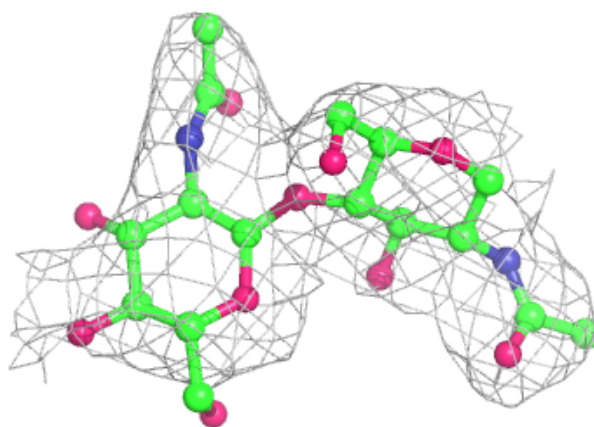
Mol	Type	Chain	Res	Atoms	RSCC	RSR	B-factors(\AA^2)	Q<0.9
3	NAG	I	2	14/15	0.76	0.31	93,123,132,137	0
3	NAG	G	2	14/15	0.86	0.26	74,113,119,121	0
2	MAN	F	4	11/12	0.87	0.20	81,91,96,109	0
3	NAG	J	2	14/15	0.87	0.27	75,93,107,114	0
3	NAG	H	2	14/15	0.88	0.23	97,120,131,131	0
2	BMA	F	3	11/12	0.91	0.13	76,79,96,98	0
2	NAG	F	2	14/15	0.93	0.09	48,60,71,74	0
3	NAG	H	1	14/15	0.94	0.10	67,76,96,97	0
2	NAG	F	1	14/15	0.94	0.10	49,58,63,66	0
3	NAG	J	1	14/15	0.95	0.12	44,58,71,78	0
3	NAG	G	1	14/15	0.95	0.18	80,84,102,106	0
3	NAG	I	1	14/15	0.95	0.12	64,74,82,90	0

The following is a graphical depiction of the model fit to experimental electron density for oligosaccharide. Each fit is shown from different orientation to approximate a three-dimensional view.

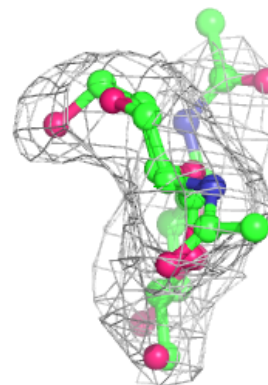
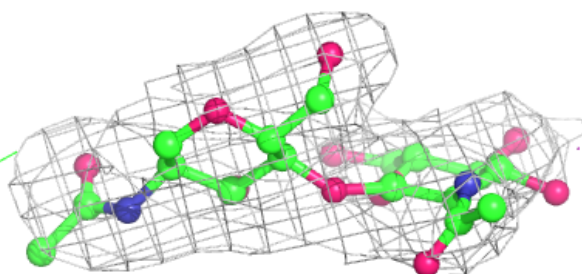
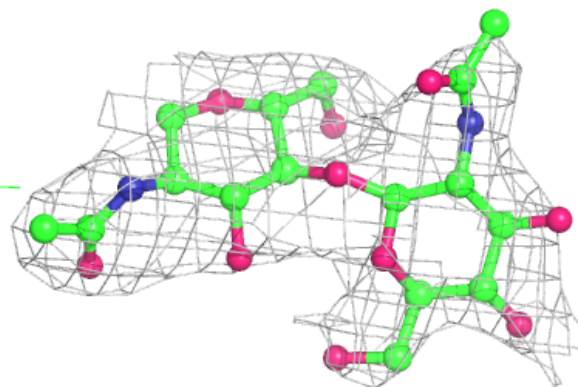


Electron density around Chain G:

$2mF_o-DF_c$ (at 0.7 rmsd) in gray
 mF_o-DF_c (at 3 rmsd) in purple (negative)
and green (positive)

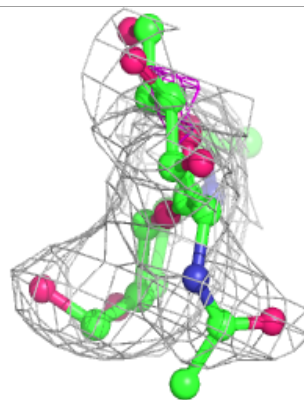
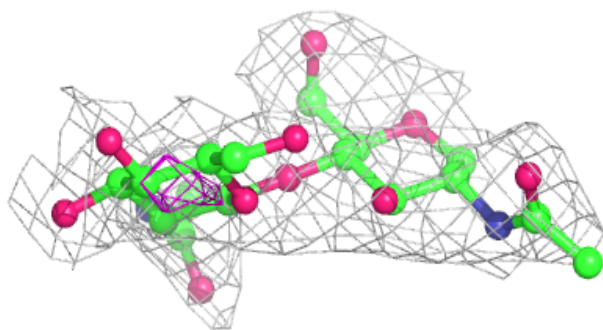
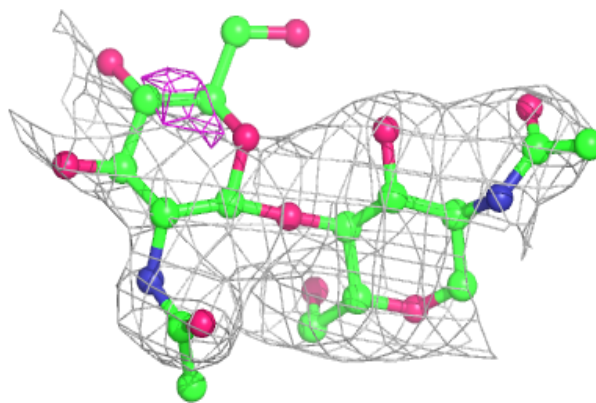
**Electron density around Chain H:**

$2mF_o-DF_c$ (at 0.7 rmsd) in gray
 mF_o-DF_c (at 3 rmsd) in purple (negative)
and green (positive)

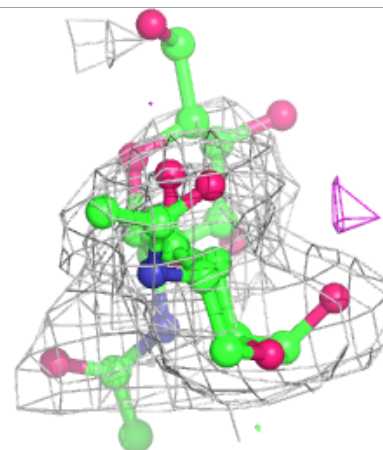
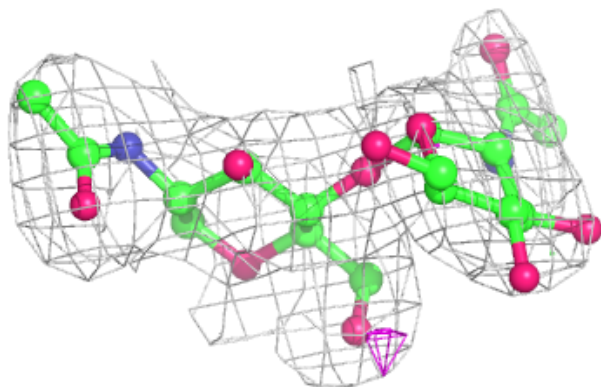
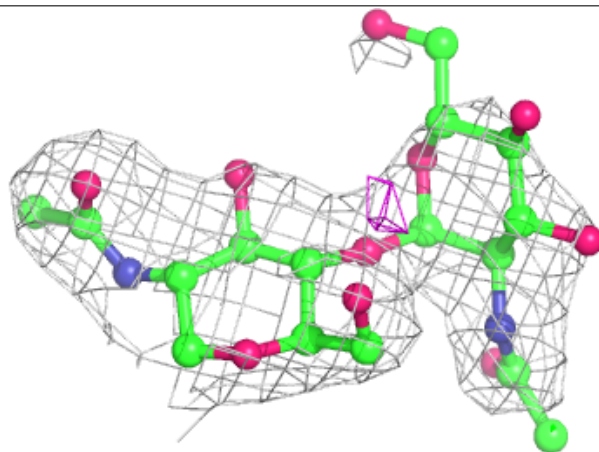


Electron density around Chain I:

$2mF_o-DF_c$ (at 0.7 rmsd) in gray
 mF_o-DF_c (at 3 rmsd) in purple (negative)
and green (positive)

**Electron density around Chain J:**

$2mF_o-DF_c$ (at 0.7 rmsd) in gray
 mF_o-DF_c (at 3 rmsd) in purple (negative)
and green (positive)



6.4 Ligands

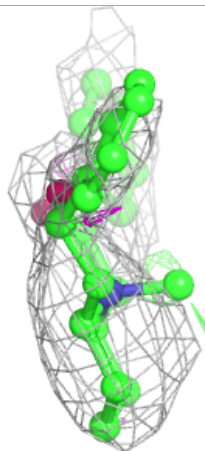
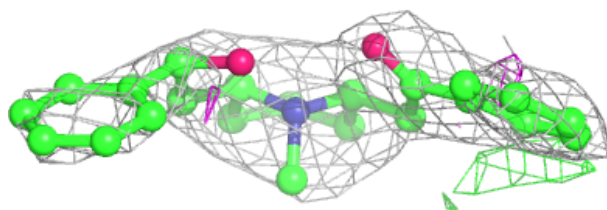
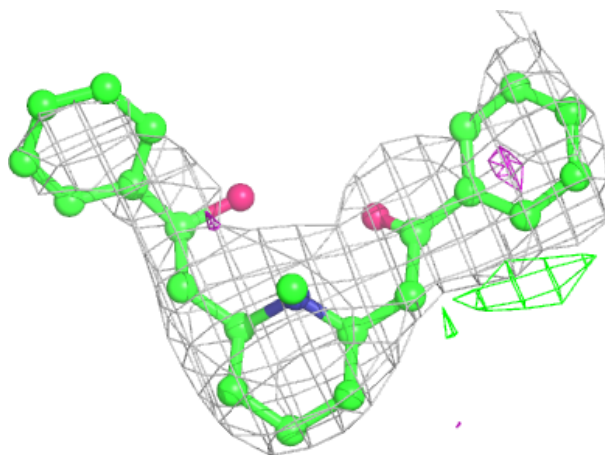
In the following table, the Atoms column lists the number of modelled atoms in the group and the number defined in the chemical component dictionary. The B-factors column lists the minimum, median, 95th percentile and maximum values of B factors of atoms in the group. The column labelled 'Q<0.9' lists the number of atoms with occupancy less than 0.9.

Mol	Type	Chain	Res	Atoms	RSCC	RSR	B-factors(Å ²)	Q<0.9
5	GOL	C	1207	6/6	0.64	1.04	152,158,160,164	0
6	5VU	E	1207	16/16	0.70	0.77	20,20,20,20	0
4	L0B	B	1205	25/25	0.81	0.25	75,88,98,101	0
5	GOL	B	1206	6/6	0.84	0.27	65,67,70,72	0
4	L0B	C	1205	25/25	0.89	0.29	59,80,97,100	0
5	GOL	A	1206	6/6	0.90	0.18	53,55,62,66	0
6	5VU	A	1207	16/16	0.91	0.27	57,70,84,97	0
6	5VU	C	1208	16/16	0.91	0.31	76,97,113,119	0
6	5VU	B	1207	16/16	0.92	0.29	60,77,98,107	0
4	L0B	E	1205	25/25	0.92	0.21	48,69,105,110	0
5	GOL	E	1206	6/6	0.92	0.23	48,62,71,78	0
4	L0B	D	1205	25/25	0.92	0.17	43,62,72,75	0
5	GOL	C	1206	6/6	0.92	0.16	51,72,75,79	0
6	5VU	D	1206	16/16	0.93	0.26	65,82,94,102	0
4	L0B	A	1205	25/25	0.94	0.22	42,66,81,82	0
6	5VU	E	1208	16/16	0.96	0.17	28,45,52,69	0

The following is a graphical depiction of the model fit to experimental electron density of all instances of the Ligand of Interest. In addition, ligands with molecular weight > 250 and outliers as shown on the geometry validation Tables will also be included. Each fit is shown from different orientation to approximate a three-dimensional view.

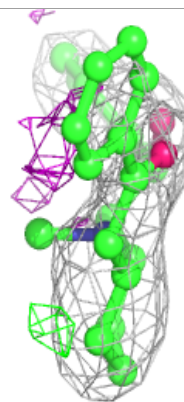
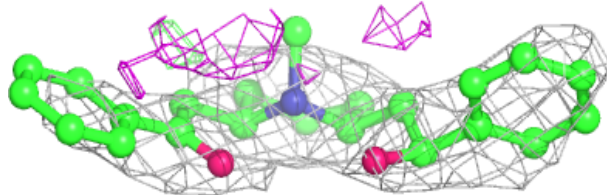
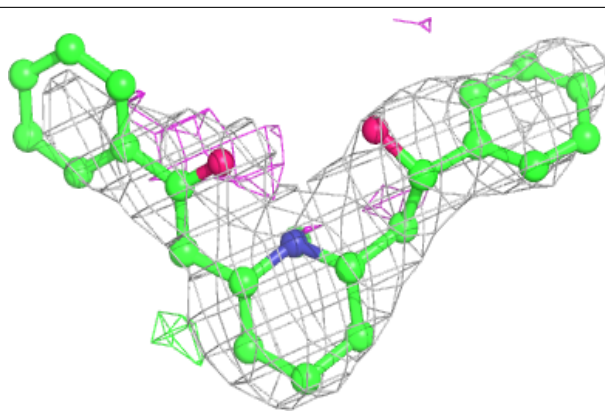
Electron density around L0B B 1205:

$2mF_o-DF_c$ (at 0.7 rmsd) in gray
 mF_o-DF_c (at 3 rmsd) in purple (negative)
and green (positive)

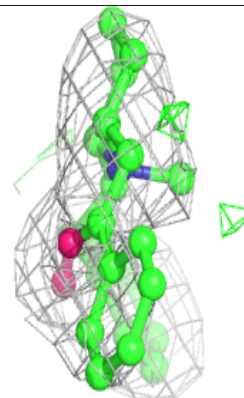
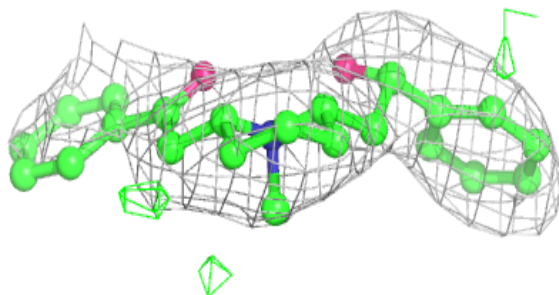
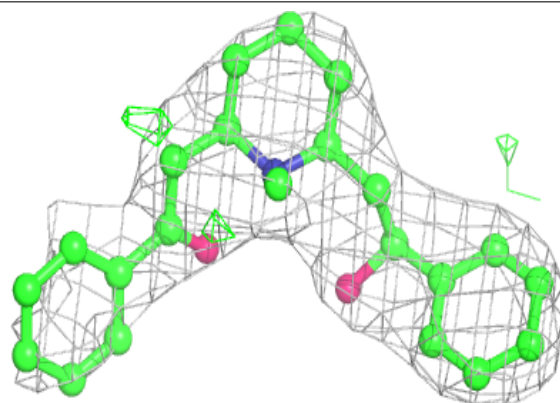


Electron density around L0B C 1205:

$2mF_o-DF_c$ (at 0.7 rmsd) in gray
 mF_o-DF_c (at 3 rmsd) in purple (negative)
and green (positive)

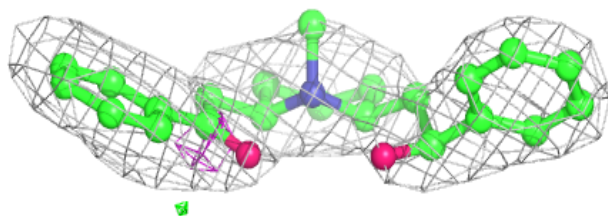
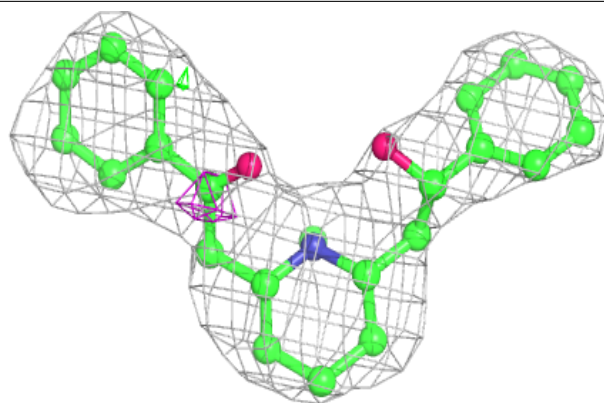
**Electron density around L0B E 1205:**

$2mF_o-DF_c$ (at 0.7 rmsd) in gray
 mF_o-DF_c (at 3 rmsd) in purple (negative)
and green (positive)

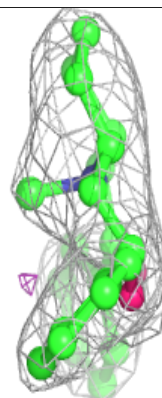
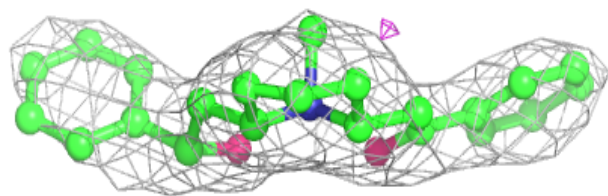
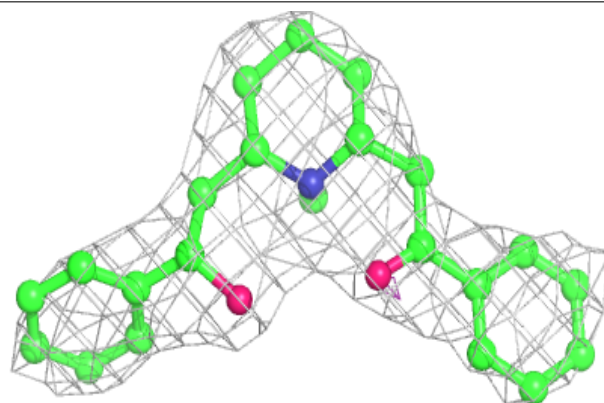


Electron density around L0B D 1205:

$2mF_o-DF_c$ (at 0.7 rmsd) in gray
 mF_o-DF_c (at 3 rmsd) in purple (negative)
and green (positive)

**Electron density around L0B A 1205:**

$2mF_o-DF_c$ (at 0.7 rmsd) in gray
 mF_o-DF_c (at 3 rmsd) in purple (negative)
and green (positive)



6.5 Other polymers [i](#)

There are no such residues in this entry.