



# Full wwPDB X-ray Structure Validation Report ⓘ

Oct 30, 2023 – 08:11 PM JST

PDB ID : 4YVX  
Title : Crystal structure of AKR1C3 complexed with glimepiride  
Authors : Zhao, Y.; Zheng, X.; Zhang, H.; Hu, X.  
Deposited on : 2015-03-20  
Resolution : 2.30 Å(reported)

This is a Full wwPDB X-ray Structure Validation Report for a publicly released PDB entry.

We welcome your comments at [validation@mail.wwpdb.org](mailto:validation@mail.wwpdb.org)

A user guide is available at

<https://www.wwpdb.org/validation/2017/XrayValidationReportHelp>

with specific help available everywhere you see the ⓘ symbol.

The types of validation reports are described at

<http://www.wwpdb.org/validation/2017/FAQs#types>.

---

The following versions of software and data (see [references ⓘ](#)) were used in the production of this report:

MolProbity : 4.02b-467  
Mogul : 1.8.5 (274361), CSD as541be (2020)  
Xtriage (Phenix) : 1.13  
EDS : 2.36  
buster-report : 1.1.7 (2018)  
Percentile statistics : 20191225.v01 (using entries in the PDB archive December 25th 2019)  
Refmac : 5.8.0158  
CCP4 : 7.0.044 (Gargrove)  
Ideal geometry (proteins) : Engh & Huber (2001)  
Ideal geometry (DNA, RNA) : Parkinson et al. (1996)  
Validation Pipeline (wwPDB-VP) : 2.36

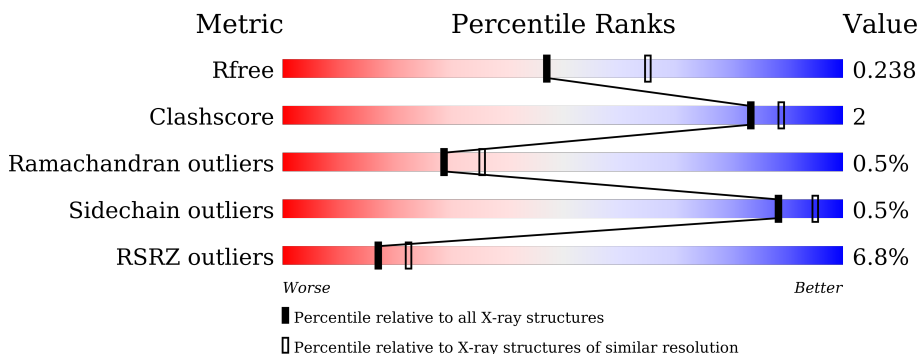
# 1 Overall quality at a glance

The following experimental techniques were used to determine the structure:

*X-RAY DIFFRACTION*

The reported resolution of this entry is 2.30 Å.

Percentile scores (ranging between 0-100) for global validation metrics of the entry are shown in the following graphic. The table shows the number of entries on which the scores are based.



Metric	Whole archive (#Entries)	Similar resolution (#Entries, resolution range(Å))
$R_{free}$	130704	5042 (2.30-2.30)
Clashscore	141614	5643 (2.30-2.30)
Ramachandran outliers	138981	5575 (2.30-2.30)
Sidechain outliers	138945	5575 (2.30-2.30)
RSRZ outliers	127900	4938 (2.30-2.30)

The table below summarises the geometric issues observed across the polymeric chains and their fit to the electron density. The red, orange, yellow and green segments of the lower bar indicate the fraction of residues that contain outliers for  $\geq 3$ , 2, 1 and 0 types of geometric quality criteria respectively. A grey segment represents the fraction of residues that are not modelled. The numeric value for each fraction is indicated below the corresponding segment, with a dot representing fractions  $\leq 5\%$ . The upper red bar (where present) indicates the fraction of residues that have poor fit to the electron density. The numeric value is given above the bar.

Mol	Chain	Length	Quality of chain
1	A	323	
1	B	323	

## 2 Entry composition [i](#)

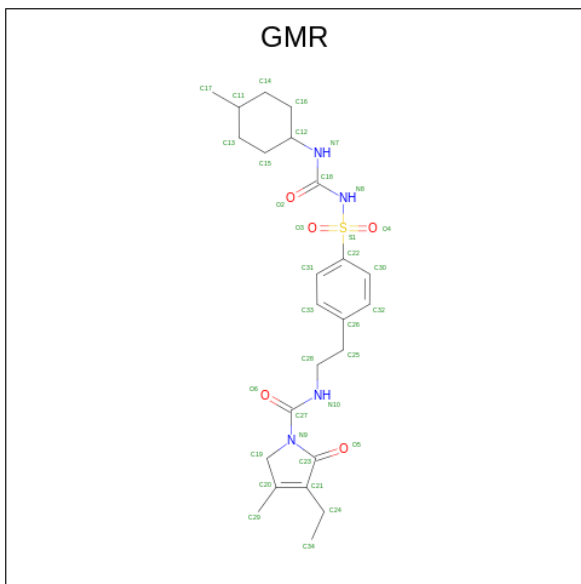
There are 4 unique types of molecules in this entry. The entry contains 5460 atoms, of which 0 are hydrogens and 0 are deuteriums.

In the tables below, the ZeroOcc column contains the number of atoms modelled with zero occupancy, the AltConf column contains the number of residues with at least one atom in alternate conformation and the Trace column contains the number of residues modelled with at most 2 atoms.

- Molecule 1 is a protein called Aldo-keto reductase family 1 member C3.

Mol	Chain	Residues	Atoms					ZeroOcc	AltConf	Trace
			Total	C	N	O	S			
1	A	315	Total 2524	C 1609	N 440	O 463	S 12	0	0	0
1	B	315	Total 2524	C 1609	N 440	O 463	S 12	0	0	0

- Molecule 2 is 3-ethyl-4-methyl-N-[2-(4-[(cis-4-methylcyclohexyl)carbamoyl]sulfamoyl]phenyl)ethyl]-2-oxo-2,5-dihydro-1H-pyrrole-1-carboxamide (three-letter code: GMR) (formula: C<sub>24</sub>H<sub>34</sub>N<sub>4</sub>O<sub>5</sub>S).



Mol	Chain	Residues	Atoms					ZeroOcc	AltConf
			Total	C	N	O	S		
2	A	1	Total 34	C 24	N 4	O 5	S 1	0	0
2	B	1	Total 34	C 24	N 4	O 5	S 1	0	0

- Molecule 3 is NADP NICOTINAMIDE-ADENINE-DINUCLEOTIDE PHOSPHATE (three-letter code: NAP) (formula: C<sub>21</sub>H<sub>28</sub>N<sub>7</sub>O<sub>17</sub>P<sub>3</sub>).

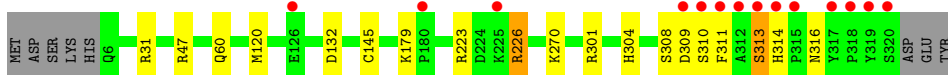


### 3 Residue-property plots [i](#)

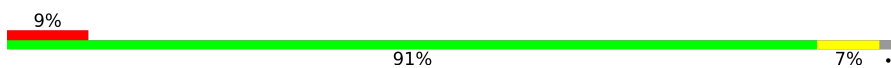
These plots are drawn for all protein, RNA, DNA and oligosaccharide chains in the entry. The first graphic for a chain summarises the proportions of the various outlier classes displayed in the second graphic. The second graphic shows the sequence view annotated by issues in geometry and electron density. Residues are color-coded according to the number of geometric quality criteria for which they contain at least one outlier: green = 0, yellow = 1, orange = 2 and red = 3 or more. A red dot above a residue indicates a poor fit to the electron density ( $RSRZ > 2$ ). Stretches of 2 or more consecutive residues without any outlier are shown as a green connector. Residues present in the sample, but not in the model, are shown in grey.

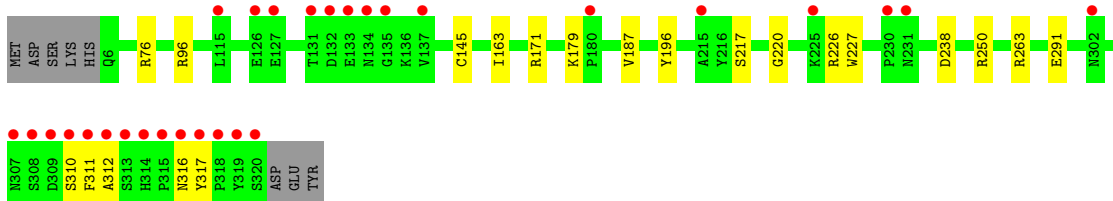
- Molecule 1: Aldo-keto reductase family 1 member C3

Chain A: 



- Molecule 1: Aldo-keto reductase family 1 member C3

Chain B: 



## 4 Data and refinement statistics

Property	Value	Source
Space group	P 1	Depositor
Cell constants a, b, c, $\alpha$ , $\beta$ , $\gamma$	47.00Å 49.27Å 83.72Å 74.65° 86.04° 69.41°	Depositor
Resolution (Å)	80.71 – 2.30 25.50 – 2.30	Depositor EDS
% Data completeness (in resolution range)	99.9 (80.71-2.30) 100.0 (25.50-2.30)	Depositor EDS
$R_{merge}$	(Not available)	Depositor
$R_{sym}$	0.15	Depositor
$\langle I/\sigma(I) \rangle$ <sup>1</sup>	2.35 (at 2.31Å)	Xtrriage
Refinement program	REFMAC 5.8.0123	Depositor
R, $R_{free}$	0.184 , 0.232 0.192 , 0.238	Depositor DCC
$R_{free}$ test set	1514 reflections (5.03%)	wwPDB-VP
Wilson B-factor (Å <sup>2</sup> )	22.1	Xtrriage
Anisotropy	0.049	Xtrriage
Bulk solvent $k_{sol}$ (e/Å <sup>3</sup> ), $B_{sol}$ (Å <sup>2</sup> )	0.40 , 50.3	EDS
L-test for twinning <sup>2</sup>	$\langle  L  \rangle = 0.50$ , $\langle L^2 \rangle = 0.34$	Xtrriage
Estimated twinning fraction	0.014 for -h,-k,-k+1	Xtrriage
$F_o, F_c$ correlation	0.94	EDS
Total number of atoms	5460	wwPDB-VP
Average B, all atoms (Å <sup>2</sup> )	26.0	wwPDB-VP

Xtrriage's analysis on translational NCS is as follows: *The largest off-origin peak in the Patterson function is 7.35% of the height of the origin peak. No significant pseudotranslation is detected.*

<sup>1</sup>Intensities estimated from amplitudes.

<sup>2</sup>Theoretical values of  $\langle |L| \rangle$ ,  $\langle L^2 \rangle$  for acentric reflections are 0.5, 0.333 respectively for untwinned datasets, and 0.375, 0.2 for perfectly twinned datasets.

## 5 Model quality

### 5.1 Standard geometry

Bond lengths and bond angles in the following residue types are not validated in this section: GMR, NAP

The Z score for a bond length (or angle) is the number of standard deviations the observed value is removed from the expected value. A bond length (or angle) with  $|Z| > 5$  is considered an outlier worth inspection. RMSZ is the root-mean-square of all Z scores of the bond lengths (or angles).

Mol	Chain	Bond lengths		Bond angles	
		RMSZ	# Z  >5	RMSZ	# Z  >5
1	A	0.83	0/2582	0.90	6/3494 (0.2%)
1	B	0.76	0/2582	0.88	5/3494 (0.1%)
All	All	0.80	0/5164	0.89	11/6988 (0.2%)

There are no bond length outliers.

All (11) bond angle outliers are listed below:

Mol	Chain	Res	Type	Atoms	Z	Observed(°)	Ideal(°)
1	A	301	ARG	NE-CZ-NH1	9.18	124.89	120.30
1	A	301	ARG	NE-CZ-NH2	-7.13	116.73	120.30
1	A	47	ARG	NE-CZ-NH1	6.87	123.73	120.30
1	A	132	ASP	CB-CG-OD1	6.39	124.05	118.30
1	B	250	ARG	NE-CZ-NH1	5.70	123.15	120.30
1	B	96	ARG	NE-CZ-NH1	5.55	123.08	120.30
1	B	220	GLY	N-CA-C	-5.51	99.31	113.10
1	B	263	ARG	NE-CZ-NH2	5.24	122.92	120.30
1	A	223	ARG	NE-CZ-NH1	5.22	122.91	120.30
1	B	76	ARG	NE-CZ-NH1	5.05	122.82	120.30
1	A	226	ARG	NE-CZ-NH2	5.02	122.81	120.30

There are no chirality outliers.

There are no planarity outliers.

### 5.2 Too-close contacts

In the following table, the Non-H and H(model) columns list the number of non-hydrogen atoms and hydrogen atoms in the chain respectively. The H(added) column lists the number of hydrogen atoms added and optimized by MolProbity. The Clashes column lists the number of clashes within the asymmetric unit, whereas Symm-Clashes lists symmetry-related clashes.

Mol	Chain	Non-H	H(model)	H(added)	Clashes	Symm-Clashes
1	A	2524	0	2531	12	0
1	B	2524	0	2531	10	0
2	A	34	0	34	2	0
2	B	34	0	34	2	0
3	A	48	0	25	2	0
3	B	48	0	25	1	0
4	A	143	0	0	1	0
4	B	105	0	0	0	0
All	All	5460	0	5180	25	0

The all-atom clashscore is defined as the number of clashes found per 1000 atoms (including hydrogen atoms). The all-atom clashscore for this structure is 2.

All (25) close contacts within the same asymmetric unit are listed below, sorted by their clash magnitude.

Atom-1	Atom-2	Interatomic distance (Å)	Clash overlap (Å)
1:B:311:PHE:CD1	1:B:317:TYR:CZ	2.83	0.67
1:A:308:SER:HB3	1:A:311:PHE:HB3	1.77	0.66
1:B:311:PHE:CE1	1:B:312:ALA:HB2	2.32	0.64
1:A:226:ARG:NE	4:A:501:HOH:O	2.35	0.59
1:A:311:PHE:HB2	2:A:401:GMR:H32	1.87	0.56
1:B:311:PHE:CD1	1:B:312:ALA:HB2	2.41	0.55
1:B:291:GLU:N	1:B:291:GLU:OE1	2.40	0.54
1:A:310:SER:O	1:A:313:SER:HB3	2.10	0.52
1:B:226:ARG:HB2	1:B:227:TRP:CE3	2.47	0.49
1:B:311:PHE:CD1	1:B:312:ALA:N	2.81	0.48
1:B:217:SER:HA	3:B:402:NAP:O2A	2.14	0.48
1:A:314:HIS:CD2	1:A:316:ASN:H	2.34	0.45
1:A:314:HIS:CD2	1:A:316:ASN:HB2	2.52	0.45
1:B:145:CYS:HB3	1:B:179:LYS:HD2	1.99	0.44
1:B:196:TYR:OH	1:B:238:ASP:OD1	2.26	0.43
2:B:401:GMR:O3	2:B:401:GMR:H5	2.18	0.43
1:A:270:LYS:O	3:A:402:NAP:H8A	2.19	0.42
1:A:31:ARG:O	1:A:60:GLN:HG2	2.19	0.42
1:A:145:CYS:HB3	1:A:179:LYS:HD2	2.02	0.41
2:A:401:GMR:C18	3:A:402:NAP:C4N	2.98	0.41
2:B:401:GMR:H5	2:B:401:GMR:S1	2.59	0.41
1:A:120:MET:HG2	1:A:314:HIS:CD2	2.55	0.41
1:B:163:ILE:O	1:B:187:VAL:HG22	2.21	0.41
1:A:120:MET:HE1	1:A:311:PHE:HA	2.03	0.40
1:A:120:MET:HG2	1:A:314:HIS:HD2	1.86	0.40



There are no symmetry-related clashes.

## 5.3 Torsion angles [i](#)

### 5.3.1 Protein backbone [i](#)

In the following table, the Percentiles column shows the percent Ramachandran outliers of the chain as a percentile score with respect to all X-ray entries followed by that with respect to entries of similar resolution.

The Analysed column shows the number of residues for which the backbone conformation was analysed, and the total number of residues.

Mol	Chain	Analysed	Favoured	Allowed	Outliers	Percentiles	
1	A	313/323 (97%)	303 (97%)	9 (3%)	1 (0%)	41	50
1	B	313/323 (97%)	298 (95%)	13 (4%)	2 (1%)	25	31
All	All	626/646 (97%)	601 (96%)	22 (4%)	3 (0%)	29	35

All (3) Ramachandran outliers are listed below:

Mol	Chain	Res	Type
1	A	313	SER
1	B	310	SER
1	B	316	ASN

### 5.3.2 Protein sidechains [i](#)

In the following table, the Percentiles column shows the percent sidechain outliers of the chain as a percentile score with respect to all X-ray entries followed by that with respect to entries of similar resolution.

The Analysed column shows the number of residues for which the sidechain conformation was analysed, and the total number of residues.

Mol	Chain	Analysed	Rotameric	Outliers	Percentiles	
1	A	279/287 (97%)	277 (99%)	2 (1%)	84	92
1	B	279/287 (97%)	278 (100%)	1 (0%)	91	96
All	All	558/574 (97%)	555 (100%)	3 (0%)	88	95

All (3) residues with a non-rotameric sidechain are listed below:

Mol	Chain	Res	Type
1	A	304	HIS
1	A	309	ASP
1	B	171	ARG

Sometimes sidechains can be flipped to improve hydrogen bonding and reduce clashes. All (1) such sidechains are listed below:

Mol	Chain	Res	Type
1	B	314	HIS

### 5.3.3 RNA [i](#)

There are no RNA molecules in this entry.

### 5.4 Non-standard residues in protein, DNA, RNA chains [i](#)

There are no non-standard protein/DNA/RNA residues in this entry.

### 5.5 Carbohydrates [i](#)

There are no monosaccharides in this entry.

### 5.6 Ligand geometry [i](#)

4 ligands are modelled in this entry.

In the following table, the Counts columns list the number of bonds (or angles) for which Mogul statistics could be retrieved, the number of bonds (or angles) that are observed in the model and the number of bonds (or angles) that are defined in the Chemical Component Dictionary. The Link column lists molecule types, if any, to which the group is linked. The Z score for a bond length (or angle) is the number of standard deviations the observed value is removed from the expected value. A bond length (or angle) with  $|Z| > 2$  is considered an outlier worth inspection. RMSZ is the root-mean-square of all Z scores of the bond lengths (or angles).

Mol	Type	Chain	Res	Link	Bond lengths			Bond angles		
					Counts	RMSZ	# Z  > 2	Counts	RMSZ	# Z  > 2
2	GMR	A	401	-	36,36,36	0.62	1 (2%)	46,51,51	1.80	10 (21%)
2	GMR	B	401	-	36,36,36	0.44	0	46,51,51	1.50	5 (10%)
3	NAP	B	402	-	45,52,52	1.26	5 (11%)	56,80,80	1.45	8 (14%)
3	NAP	A	402	-	45,52,52	1.28	6 (13%)	56,80,80	1.45	11 (19%)

In the following table, the Chirals column lists the number of chiral outliers, the number of chiral centers analysed, the number of these observed in the model and the number defined in the Chemical Component Dictionary. Similar counts are reported in the Torsion and Rings columns. '-' means no outliers of that kind were identified.

Mol	Type	Chain	Res	Link	Chirals	Torsions	Rings
2	GMR	A	401	-	-	8/27/53/53	0/3/3/3
2	GMR	B	401	-	-	11/27/53/53	0/3/3/3
3	NAP	B	402	-	-	6/31/67/67	0/5/5/5
3	NAP	A	402	-	-	5/31/67/67	0/5/5/5

All (12) bond length outliers are listed below:

Mol	Chain	Res	Type	Atoms	Z	Observed(Å)	Ideal(Å)
3	A	402	NAP	P2B-O2B	3.45	1.65	1.59
3	B	402	NAP	C5A-C4A	2.95	1.48	1.40
3	A	402	NAP	C5A-C4A	2.91	1.48	1.40
3	B	402	NAP	O4B-C1B	2.88	1.45	1.41
3	B	402	NAP	C2A-N3A	2.85	1.36	1.32
3	A	402	NAP	C2A-N3A	2.75	1.36	1.32
3	B	402	NAP	C2D-C1D	-2.64	1.49	1.53
3	A	402	NAP	C2A-N1A	2.61	1.38	1.33
3	A	402	NAP	O4B-C1B	2.53	1.44	1.41
3	A	402	NAP	O4D-C1D	2.32	1.44	1.41
3	B	402	NAP	O5D-C5D	-2.25	1.36	1.44
2	A	401	GMR	C18-N7	-2.22	1.30	1.35

All (34) bond angle outliers are listed below:

Mol	Chain	Res	Type	Atoms	Z	Observed(°)	Ideal(°)
2	B	401	GMR	O2-C18-N8	-5.75	110.62	121.70
2	A	401	GMR	C18-N8-S1	5.43	139.15	123.62
2	A	401	GMR	O2-C18-N8	-5.08	111.92	121.70
2	A	401	GMR	N8-C18-N7	4.77	131.03	115.10
3	B	402	NAP	O4D-C4D-C5D	-4.41	94.86	109.37
2	B	401	GMR	N8-C18-N7	4.36	129.67	115.10
3	B	402	NAP	N3A-C2A-N1A	-4.14	122.22	128.68
3	A	402	NAP	N3A-C2A-N1A	-3.58	123.09	128.68
2	B	401	GMR	C18-N8-S1	3.55	133.77	123.62
3	A	402	NAP	O2B-P2B-O1X	-3.44	96.13	109.39
2	A	401	GMR	C14-C16-C12	3.43	115.28	111.48
2	A	401	GMR	O2-C18-N7	-3.08	117.00	122.62
3	B	402	NAP	O4D-C1D-C2D	-3.04	102.49	106.93
2	A	401	GMR	C12-N7-C18	2.98	129.32	123.02

*Continued on next page...*

Continued from previous page...

Mol	Chain	Res	Type	Atoms	Z	Observed(°)	Ideal(°)
2	A	401	GMR	O4-S1-N8	2.86	114.79	106.74
3	A	402	NAP	C2N-C3N-C4N	2.80	121.44	118.26
3	A	402	NAP	C6N-N1N-C2N	-2.72	119.50	121.97
2	B	401	GMR	C12-N7-C18	2.55	128.40	123.02
3	A	402	NAP	O3D-C3D-C4D	2.42	118.05	111.05
3	B	402	NAP	C2A-N1A-C6A	2.30	122.68	118.75
3	A	402	NAP	O4B-C1B-C2B	2.27	110.53	106.59
2	A	401	GMR	O3-S1-N8	-2.26	100.40	106.74
3	A	402	NAP	C5N-C6N-N1N	2.24	123.62	120.40
3	B	402	NAP	PN-O3-PA	-2.14	125.48	132.83
3	A	402	NAP	C3N-C2N-N1N	-2.14	118.34	120.43
2	A	401	GMR	C13-C15-C12	2.11	113.82	111.48
3	B	402	NAP	C3D-C2D-C1D	2.11	104.15	100.98
3	A	402	NAP	N6A-C6A-N1A	2.09	122.91	118.57
3	B	402	NAP	C4A-C5A-N7A	-2.06	107.25	109.40
3	B	402	NAP	O3X-P2B-O2X	2.06	115.50	107.64
3	A	402	NAP	C4N-C3N-C7N	-2.03	115.62	121.04
3	A	402	NAP	C2A-N1A-C6A	2.03	122.22	118.75
2	A	401	GMR	C28-C25-C26	2.02	117.54	112.87
2	B	401	GMR	C13-C15-C12	2.01	113.71	111.48

There are no chirality outliers.

All (30) torsion outliers are listed below:

Mol	Chain	Res	Type	Atoms
2	A	401	GMR	O6-C27-N10-C28
2	A	401	GMR	N9-C27-N10-C28
2	B	401	GMR	N8-C18-N7-C12
2	B	401	GMR	O6-C27-N10-C28
2	B	401	GMR	N9-C27-N10-C28
3	A	402	NAP	C2B-O2B-P2B-O1X
3	A	402	NAP	C2B-O2B-P2B-O3X
3	B	402	NAP	C5D-O5D-PN-O1N
3	B	402	NAP	O4D-C1D-N1N-C6N
2	B	401	GMR	O2-C18-N7-C12
2	A	401	GMR	O2-C18-N7-C12
2	B	401	GMR	C23-C21-C24-C34
2	B	401	GMR	C20-C21-C24-C34
2	B	401	GMR	C28-C25-C26-C33
3	A	402	NAP	PA-O3-PN-O5D
3	B	402	NAP	PA-O3-PN-O5D
2	A	401	GMR	C28-C25-C26-C33

Continued on next page...

*Continued from previous page...*

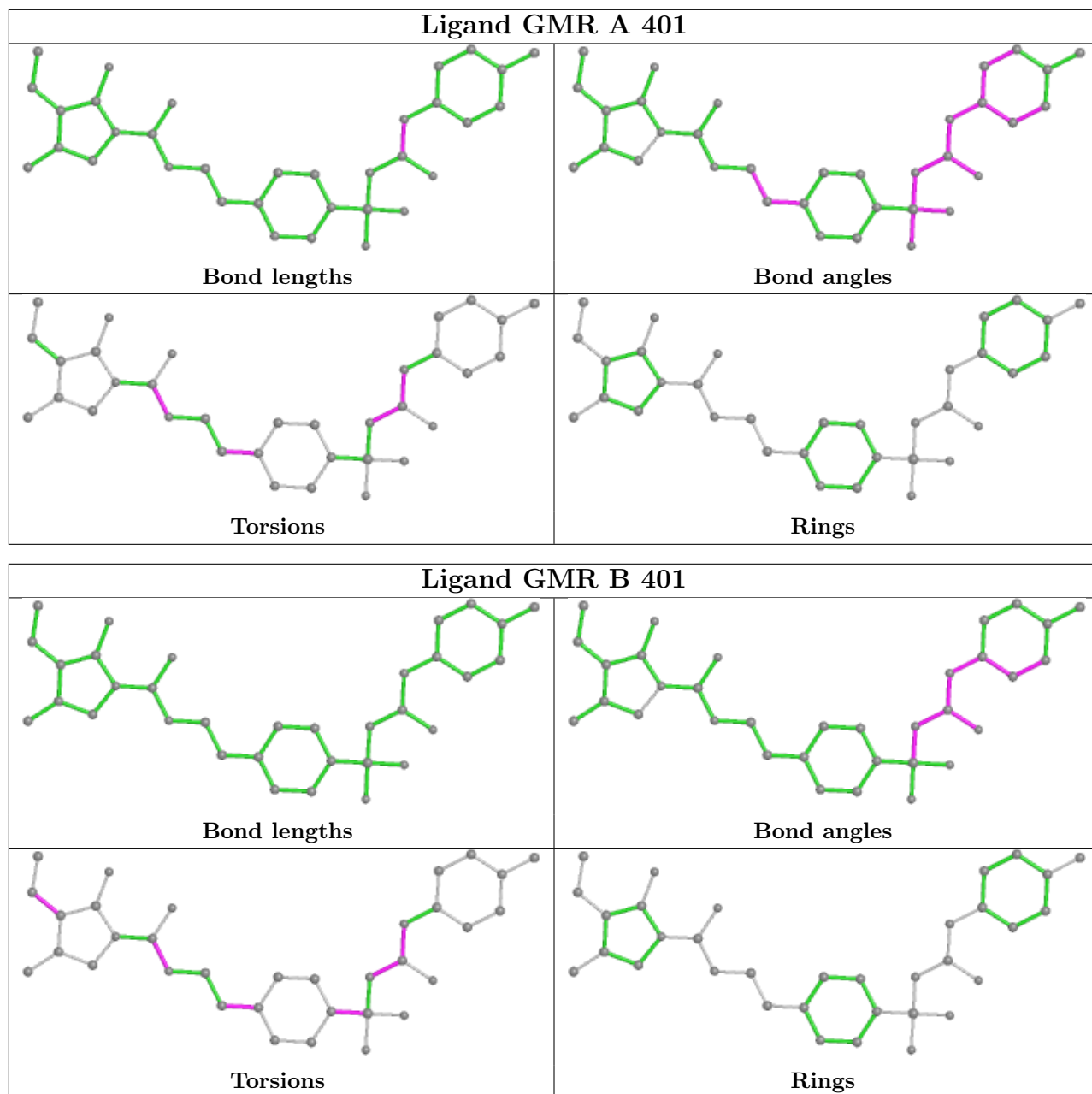
Mol	Chain	Res	Type	Atoms
2	B	401	GMR	C28-C25-C26-C32
2	A	401	GMR	C28-C25-C26-C32
3	A	402	NAP	C4D-C5D-O5D-PN
3	B	402	NAP	C4D-C5D-O5D-PN
2	A	401	GMR	O2-C18-N8-S1
2	B	401	GMR	O2-C18-N8-S1
3	B	402	NAP	PA-O3-PN-O1N
2	A	401	GMR	N7-C18-N8-S1
2	B	401	GMR	N7-C18-N8-S1
3	A	402	NAP	PA-O3-PN-O1N
2	B	401	GMR	C30-C22-S1-O4
3	B	402	NAP	O4D-C4D-C5D-O5D
2	A	401	GMR	N8-C18-N7-C12

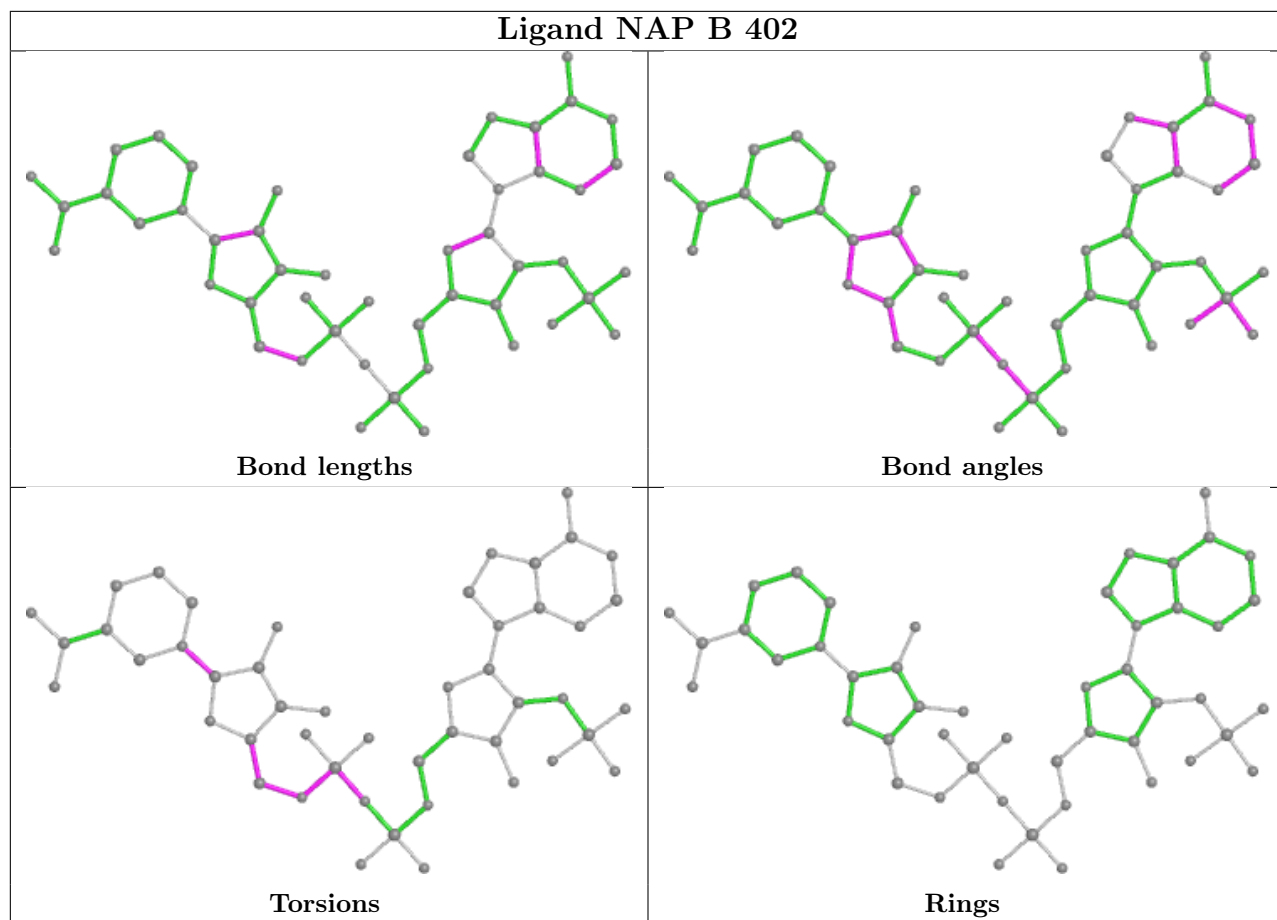
There are no ring outliers.

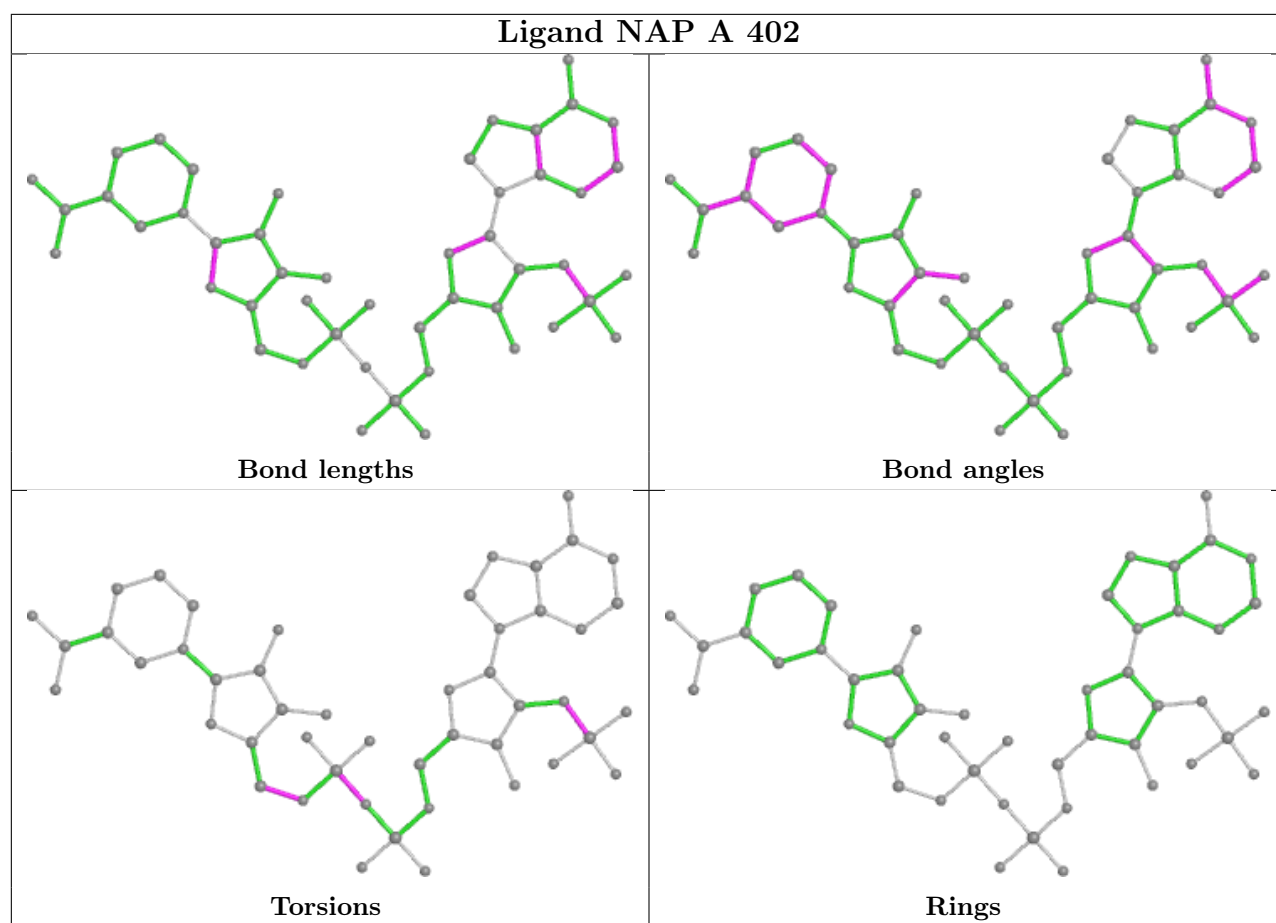
4 monomers are involved in 6 short contacts:

Mol	Chain	Res	Type	Clashes	Symm-Clashes
2	A	401	GMR	2	0
2	B	401	GMR	2	0
3	B	402	NAP	1	0
3	A	402	NAP	2	0

The following is a two-dimensional graphical depiction of Mogul quality analysis of bond lengths, bond angles, torsion angles, and ring geometry for all instances of the Ligand of Interest. In addition, ligands with molecular weight > 250 and outliers as shown on the validation Tables will also be included. For torsion angles, if less than 5% of the Mogul distribution of torsion angles is within 10 degrees of the torsion angle in question, then that torsion angle is considered an outlier. Any bond that is central to one or more torsion angles identified as an outlier by Mogul will be highlighted in the graph. For rings, the root-mean-square deviation (RMSD) between the ring in question and similar rings identified by Mogul is calculated over all ring torsion angles. If the average RMSD is greater than 60 degrees and the minimal RMSD between the ring in question and any Mogul-identified rings is also greater than 60 degrees, then that ring is considered an outlier. The outliers are highlighted in purple. The color gray indicates Mogul did not find sufficient equivalents in the CSD to analyse the geometry.







## 5.7 Other polymers [i](#)

There are no such residues in this entry.

## 5.8 Polymer linkage issues [i](#)

There are no chain breaks in this entry.



## 6 Fit of model and data

### 6.1 Protein, DNA and RNA chains

In the following table, the column labelled ‘#RSRZ > 2’ contains the number (and percentage) of RSRZ outliers, followed by percent RSRZ outliers for the chain as percentile scores relative to all X-ray entries and entries of similar resolution. The OWAB column contains the minimum, median, 95<sup>th</sup> percentile and maximum values of the occupancy-weighted average B-factor per residue. The column labelled ‘Q < 0.9’ lists the number of (and percentage) of residues with an average occupancy less than 0.9.

Mol	Chain	Analysed	<RSRZ>	#RSRZ>2	OWAB(Å <sup>2</sup> )	Q<0.9
1	A	315/323 (97%)	0.26	14 (4%) 34 41	11, 20, 47, 118	0
1	B	315/323 (97%)	0.42	29 (9%) 9 12	11, 25, 66, 127	0
All	All	630/646 (97%)	0.34	43 (6%) 17 22	11, 22, 57, 127	0

All (43) RSRZ outliers are listed below:

Mol	Chain	Res	Type	RSRZ
1	B	311	PHE	11.2
1	A	312	ALA	10.2
1	A	313	SER	9.2
1	A	309	ASP	6.9
1	A	320	SER	6.8
1	B	317	TYR	6.5
1	A	311	PHE	6.4
1	B	320	SER	6.4
1	B	315	PRO	6.3
1	B	312	ALA	5.9
1	B	309	ASP	5.1
1	A	314	HIS	5.1
1	B	308	SER	4.9
1	B	313	SER	4.7
1	B	310	SER	4.7
1	B	319	TYR	4.4
1	B	135	GLY	4.4
1	B	126	GLU	4.4
1	B	134	ASN	4.2
1	A	315	PRO	4.1
1	B	133	GLU	4.0
1	B	314	HIS	3.9
1	A	317	TYR	3.8
1	A	310	SER	3.7

*Continued on next page...*

*Continued from previous page...*

Mol	Chain	Res	Type	RSRZ
1	B	131	THR	3.6
1	B	307	ASN	3.4
1	B	132	ASP	3.2
1	B	302	ASN	3.0
1	A	319	TYR	3.0
1	A	126	GLU	3.0
1	A	318	PRO	2.7
1	B	231	ASN	2.7
1	B	318	PRO	2.6
1	B	230	PRO	2.5
1	B	137	VAL	2.3
1	B	127	GLU	2.3
1	A	180	PRO	2.2
1	B	316	ASN	2.2
1	B	115	LEU	2.1
1	A	225	LYS	2.1
1	B	225	LYS	2.0
1	B	180	PRO	2.0
1	B	215	ALA	2.0

## 6.2 Non-standard residues in protein, DNA, RNA chains [i](#)

There are no non-standard protein/DNA/RNA residues in this entry.

## 6.3 Carbohydrates [i](#)

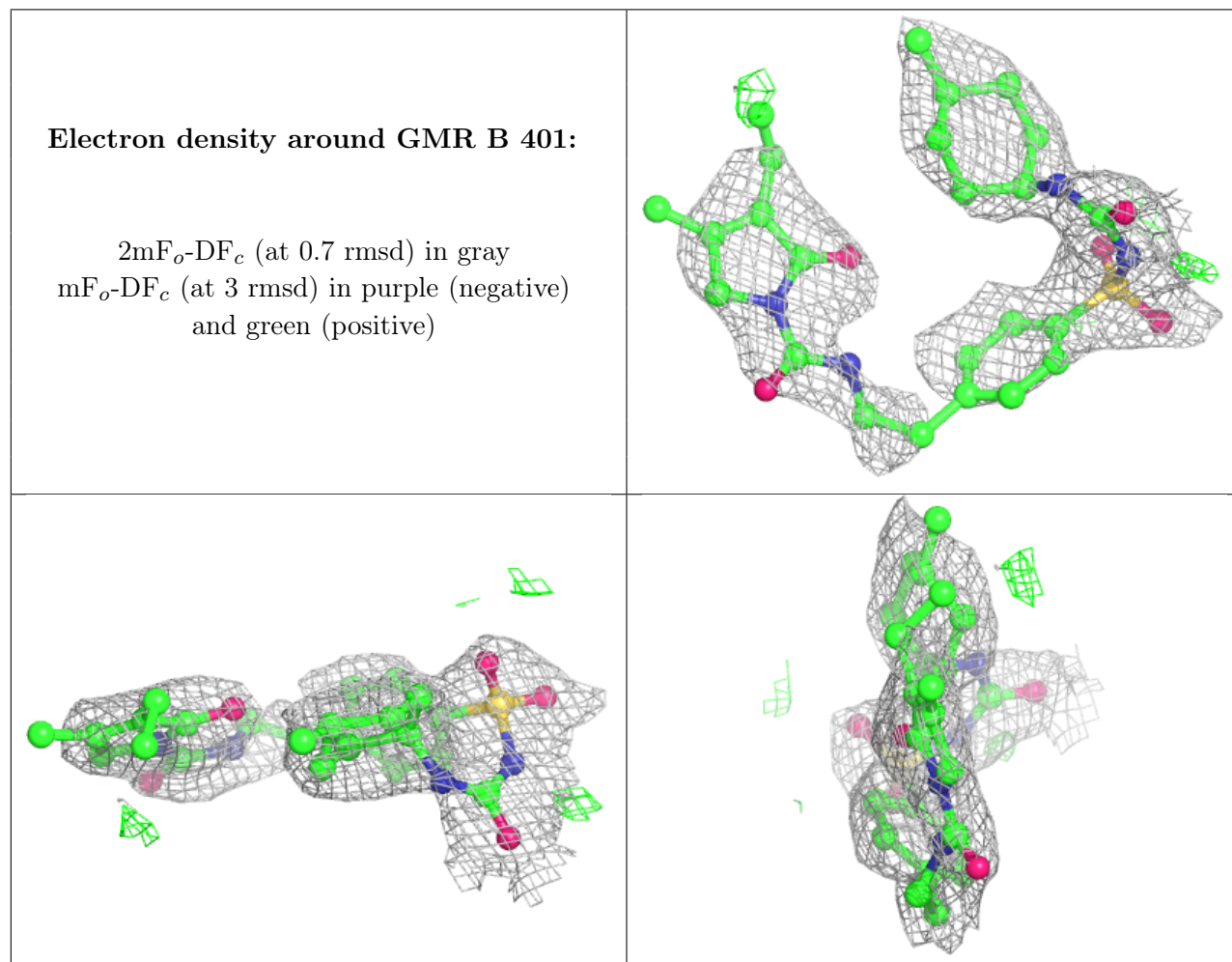
There are no monosaccharides in this entry.

## 6.4 Ligands [i](#)

In the following table, the Atoms column lists the number of modelled atoms in the group and the number defined in the chemical component dictionary. The B-factors column lists the minimum, median, 95<sup>th</sup> percentile and maximum values of B factors of atoms in the group. The column labelled 'Q<0.9' lists the number of atoms with occupancy less than 0.9.

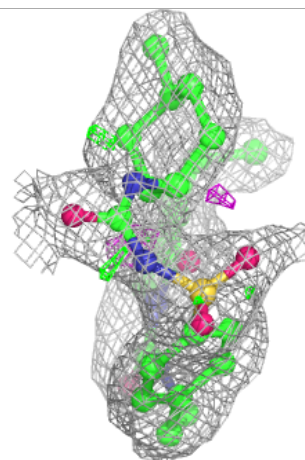
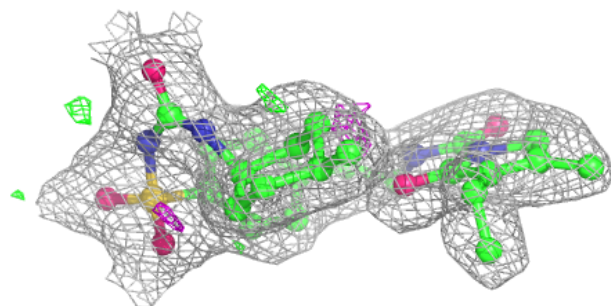
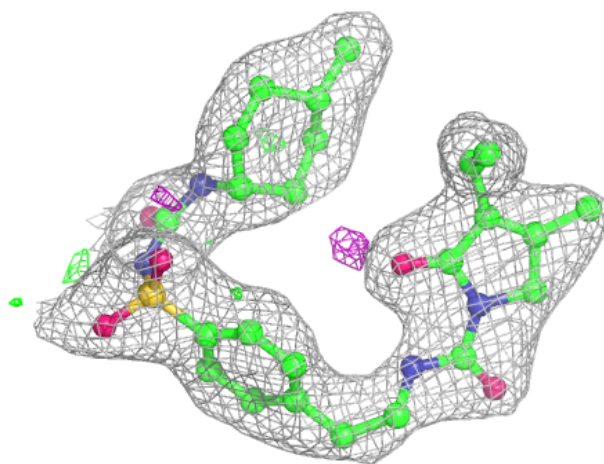
Mol	Type	Chain	Res	Atoms	RSCC	RSR	B-factors(Å <sup>2</sup> )	Q<0.9
2	GMR	B	401	34/34	0.87	0.21	38,60,73,75	0
2	GMR	A	401	34/34	0.92	0.15	18,25,29,31	0
3	NAP	B	402	48/48	0.95	0.14	16,19,23,24	0
3	NAP	A	402	48/48	0.97	0.12	10,12,14,16	0

The following is a graphical depiction of the model fit to experimental electron density of all instances of the Ligand of Interest. In addition, ligands with molecular weight > 250 and outliers as shown on the geometry validation Tables will also be included. Each fit is shown from different orientation to approximate a three-dimensional view.



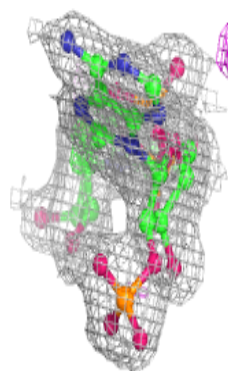
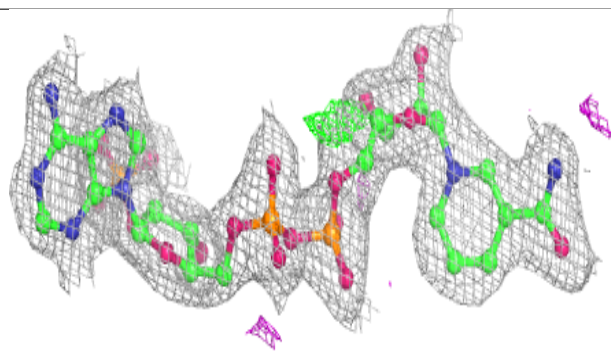
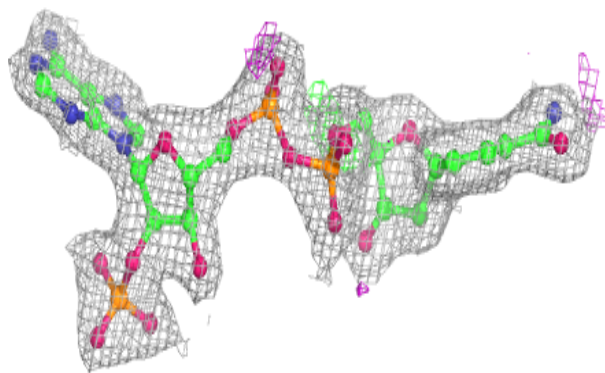
**Electron density around GMR A 401:**

$2mF_o-DF_c$  (at 0.7 rmsd) in gray  
 $mF_o-DF_c$  (at 3 rmsd) in purple (negative)  
and green (positive)

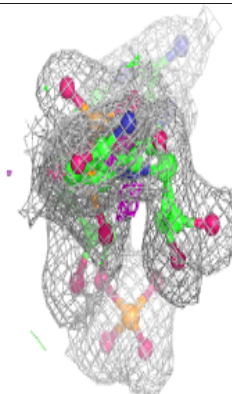
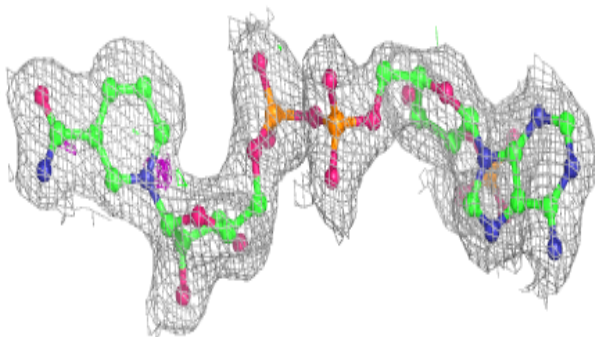
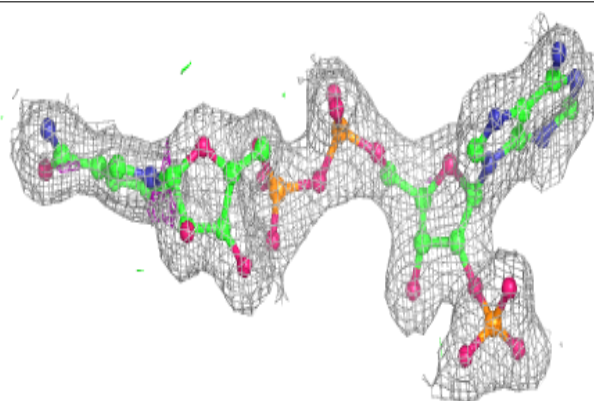


**Electron density around NAP B 402:**

$2mF_o-DF_c$  (at 0.7 rmsd) in gray  
 $mF_o-DF_c$  (at 3 rmsd) in purple (negative)  
and green (positive)

**Electron density around NAP A 402:**

$2mF_o-DF_c$  (at 0.7 rmsd) in gray  
 $mF_o-DF_c$  (at 3 rmsd) in purple (negative)  
and green (positive)



## 6.5 Other polymers [i](#)

There are no such residues in this entry.