



Full wwPDB X-ray Structure Validation Report ⓘ

Oct 8, 2023 – 12:15 PM EDT

PDB ID : 4R7C
Title : Crystal Structure of CNG mimicking NaK-ETPP mutant cocrystallized with DiMethylammonium
Authors : De March, M.; Napolitano, L.M.R.; Onesti, S.
Deposited on : 2014-08-27
Resolution : 2.30 Å(reported)

This is a Full wwPDB X-ray Structure Validation Report for a publicly released PDB entry.

We welcome your comments at validation@mail.wwpdb.org

A user guide is available at

<https://www.wwpdb.org/validation/2017/XrayValidationReportHelp>

with specific help available everywhere you see the ⓘ symbol.

The types of validation reports are described at

<http://www.wwpdb.org/validation/2017/FAQs#types>.

The following versions of software and data (see [references ⓘ](#)) were used in the production of this report:

MolProbity : 4.02b-467
Mogul : 1.8.5 (274361), CSD as541be (2020)
Xtriage (Phenix) : 1.13
EDS : 2.35.1
Percentile statistics : 20191225.v01 (using entries in the PDB archive December 25th 2019)
Refmac : 5.8.0158
CCP4 : 7.0.044 (Gargrove)
Ideal geometry (proteins) : Engh & Huber (2001)
Ideal geometry (DNA, RNA) : Parkinson et al. (1996)
Validation Pipeline (wwPDB-VP) : 2.35.1

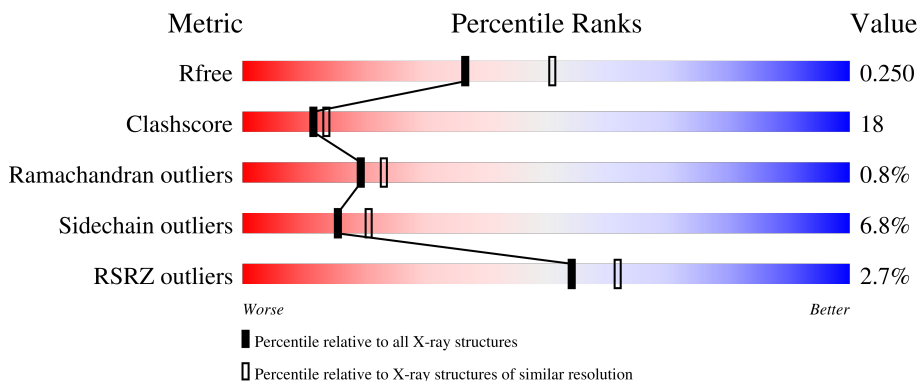
1 Overall quality at a glance i

The following experimental techniques were used to determine the structure:

X-RAY DIFFRACTION

The reported resolution of this entry is 2.30 Å.

Percentile scores (ranging between 0-100) for global validation metrics of the entry are shown in the following graphic. The table shows the number of entries on which the scores are based.



Metric	Whole archive (#Entries)	Similar resolution (#Entries, resolution range(Å))
R_{free}	130704	5042 (2.30-2.30)
Clashscore	141614	5643 (2.30-2.30)
Ramachandran outliers	138981	5575 (2.30-2.30)
Sidechain outliers	138945	5575 (2.30-2.30)
RSRZ outliers	127900	4938 (2.30-2.30)

The table below summarises the geometric issues observed across the polymeric chains and their fit to the electron density. The red, orange, yellow and green segments of the lower bar indicate the fraction of residues that contain outliers for ≥ 3 , 2, 1 and 0 types of geometric quality criteria respectively. A grey segment represents the fraction of residues that are not modelled. The numeric value for each fraction is indicated below the corresponding segment, with a dot representing fractions $\leq 5\%$. The upper red bar (where present) indicates the fraction of residues that have poor fit to the electron density. The numeric value is given above the bar.

Mol	Chain	Length	Quality of chain
1	A	96	 77% 17% . .
1	B	96	 69% 23% 6% .
1	C	96	 5% 71% 18% . 8%
1	D	96	 5% 74% 12% 6% 7%

The following table lists non-polymeric compounds, carbohydrate monomers and non-standard

residues in protein, DNA, RNA chains that are outliers for geometric or electron-density-fit criteria:

Mol	Type	Chain	Res	Chirality	Geometry	Clashes	Electron density
2	GLY	A	205	-	X	-	-
2	GLY	B	202	-	X	-	-
2	GLY	B	203	-	X	-	-
2	GLY	B	206	-	X	-	-
2	GLY	C	209	-	X	-	-
2	GLY	D	201	-	-	X	-
2	GLY	D	202	-	X	-	-
4	DMN	B	201	-	-	X	X
4	DMN	C	201	-	-	X	X

2 Entry composition i

There are 5 unique types of molecules in this entry. The entry contains 3030 atoms, of which 0 are hydrogens and 0 are deuteriums.

In the tables below, the ZeroOcc column contains the number of atoms modelled with zero occupancy, the AltConf column contains the number of residues with at least one atom in alternate conformation and the Trace column contains the number of residues modelled with at most 2 atoms.

- Molecule 1 is a protein called Potassium channel protein.

Mol	Chain	Residues	Atoms				ZeroOcc	AltConf	Trace
			Total	C	N	O			
1	A	93	711	480	104	127	0	2	0
1	B	94	722	488	107	127	0	0	0
1	C	88	596	388	93	115	0	0	0
1	D	89	640	426	96	118	0	0	0

There are 44 discrepancies between the modelled and reference sequences:

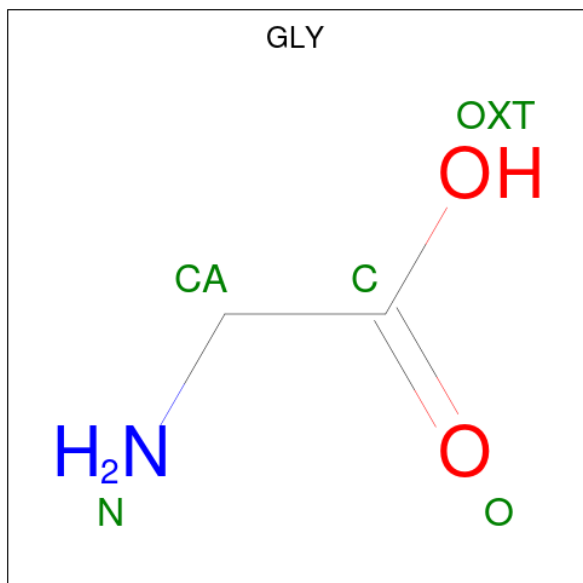
Chain	Residue	Modelled	Actual	Comment	Reference
A	18	MET	-	expression tag	UNP Q81HW2
A	19	ALA	-	expression tag	UNP Q81HW2
A	66	GLU	ASP	engineered mutation	UNP Q81HW2
A	67	THR	GLY	engineered mutation	UNP Q81HW2
A	68	PRO	ASN	engineered mutation	UNP Q81HW2
A	69	PRO	PHE	engineered mutation	UNP Q81HW2
A	?	-	SER	deletion	UNP Q81HW2
A	110	LEU	-	expression tag	UNP Q81HW2
A	111	VAL	-	expression tag	UNP Q81HW2
A	112	PRO	-	expression tag	UNP Q81HW2
A	113	ARG	-	expression tag	UNP Q81HW2
B	18	MET	-	expression tag	UNP Q81HW2
B	19	ALA	-	expression tag	UNP Q81HW2
B	66	GLU	ASP	engineered mutation	UNP Q81HW2
B	67	THR	GLY	engineered mutation	UNP Q81HW2
B	68	PRO	ASN	engineered mutation	UNP Q81HW2
B	69	PRO	PHE	engineered mutation	UNP Q81HW2
B	?	-	SER	deletion	UNP Q81HW2
B	110	LEU	-	expression tag	UNP Q81HW2
B	111	VAL	-	expression tag	UNP Q81HW2
B	112	PRO	-	expression tag	UNP Q81HW2

Continued on next page...

Continued from previous page...

Chain	Residue	Modelled	Actual	Comment	Reference
B	113	ARG	-	expression tag	UNP Q81HW2
C	18	MET	-	expression tag	UNP Q81HW2
C	19	ALA	-	expression tag	UNP Q81HW2
C	66	GLU	ASP	engineered mutation	UNP Q81HW2
C	67	THR	GLY	engineered mutation	UNP Q81HW2
C	68	PRO	ASN	engineered mutation	UNP Q81HW2
C	69	PRO	PHE	engineered mutation	UNP Q81HW2
C	?	-	SER	deletion	UNP Q81HW2
C	110	LEU	-	expression tag	UNP Q81HW2
C	111	VAL	-	expression tag	UNP Q81HW2
C	112	PRO	-	expression tag	UNP Q81HW2
C	113	ARG	-	expression tag	UNP Q81HW2
D	18	MET	-	expression tag	UNP Q81HW2
D	19	ALA	-	expression tag	UNP Q81HW2
D	66	GLU	ASP	engineered mutation	UNP Q81HW2
D	67	THR	GLY	engineered mutation	UNP Q81HW2
D	68	PRO	ASN	engineered mutation	UNP Q81HW2
D	69	PRO	PHE	engineered mutation	UNP Q81HW2
D	?	-	SER	deletion	UNP Q81HW2
D	110	LEU	-	expression tag	UNP Q81HW2
D	111	VAL	-	expression tag	UNP Q81HW2
D	112	PRO	-	expression tag	UNP Q81HW2
D	113	ARG	-	expression tag	UNP Q81HW2

- Molecule 2 is GLYCINE (three-letter code: GLY) (formula: C₂H₅NO₂).



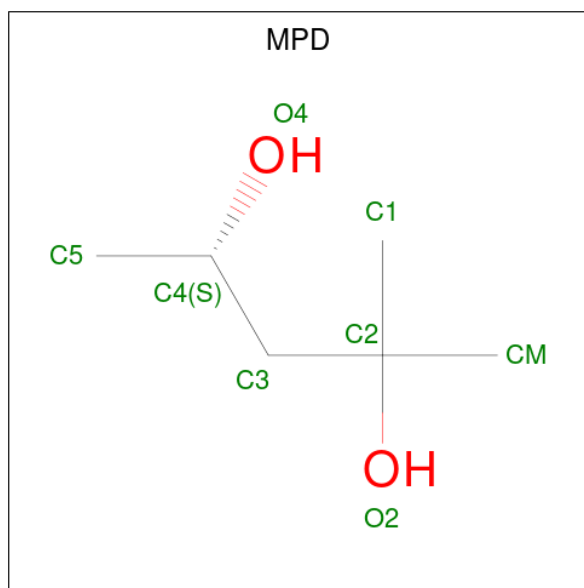
Mol	Chain	Residues	Atoms				ZeroOcc	AltConf
2	A	1	Total	C	N	O	0	0
			5	2	1	2		
2	A	1	Total	C	N	O	0	0
			5	2	1	2		
2	A	1	Total	C	N	O	0	0
			5	2	1	2		
2	A	1	Total	C	N	O	0	0
			5	2	1	2		
2	A	1	Total	C	N	O	0	0
			5	2	1	2		
2	A	1	Total	C	N	O	0	0
			5	2	1	2		
2	B	1	Total	C	N	O	0	0
			5	2	1	2		
2	B	1	Total	C	N	O	0	0
			5	2	1	2		
2	B	1	Total	C	N	O	0	0
			5	2	1	2		
2	B	1	Total	C	N	O	0	0
			5	2	1	2		
2	B	1	Total	C	N	O	0	0
			5	2	1	2		
2	B	1	Total	C	N	O	0	0
			5	2	1	2		
2	B	1	Total	C	N	O	0	0
			5	2	1	2		
2	B	1	Total	C	N	O	0	0
			5	2	1	2		
2	C	1	Total	C	N	O	0	0
			5	2	1	2		
2	C	1	Total	C	N	O	0	0
			5	2	1	2		
2	C	1	Total	C	N	O	0	0
			5	2	1	2		
2	C	1	Total	C	N	O	0	0
			5	2	1	2		
2	C	1	Total	C	N	O	0	0
			5	2	1	2		

Continued on next page...

Continued from previous page...

Mol	Chain	Residues	Atoms				ZeroOcc	AltConf
2	C	1	Total	C	N	O	0	0
			5	2	1	2		
2	C	1	Total	C	N	O	0	0
			5	2	1	2		
2	C	1	Total	C	N	O	0	0
			5	2	1	2		
2	D	1	Total	C	N	O	0	0
			5	2	1	2		
2	D	1	Total	C	N	O	0	0
			5	2	1	2		
2	D	1	Total	C	N	O	0	0
			5	2	1	2		

- Molecule 3 is (4S)-2-METHYL-2,4-PENTANEDIOL (three-letter code: MPD) (formula: C₆H₁₄O₂).



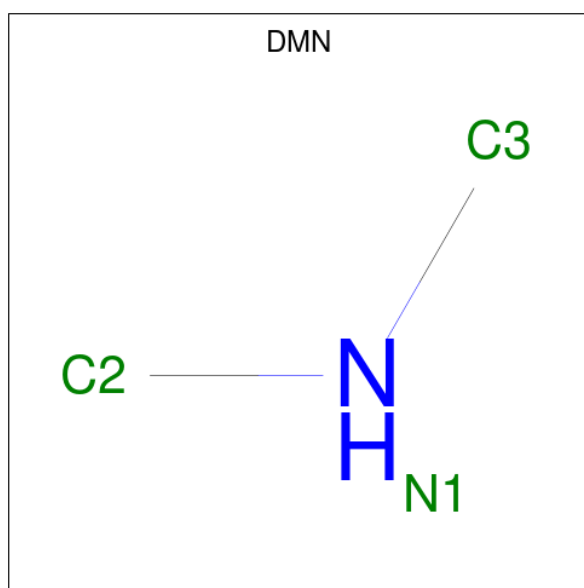
Mol	Chain	Residues	Atoms		ZeroOcc	AltConf
3	A	1	Total	C O	0	0
			8	6 2		
3	A	1	Total	C O	0	0
			8	6 2		
3	A	1	Total	C O	0	0
			8	6 2		
3	B	1	Total	C O	0	0
			8	6 2		

Continued on next page...

Continued from previous page...

Mol	Chain	Residues	Atoms			ZeroOcc	AltConf
3	B	1	Total	C	O	0	0
			8	6	2		
3	B	1	Total	C	O	0	0
			8	6	2		
3	B	1	Total	C	O	0	0
			8	6	2		
3	C	1	Total	C	O	0	0
			8	6	2		
3	C	1	Total	C	O	0	0
			8	6	2		

- Molecule 4 is DIMETHYLAMINE (three-letter code: DMN) (formula: C₂H₇N).



Mol	Chain	Residues	Atoms			ZeroOcc	AltConf
4	A	1	Total	C	N	0	0
			3	2	1		
4	A	1	Total	C	N	0	0
			3	2	1		
4	B	1	Total	C	N	0	0
			3	2	1		
4	B	1	Total	C	N	0	0
			3	2	1		
4	B	1	Total	C	N	0	0
			3	2	1		
4	B	1	Total	C	N	0	0
			3	2	1		

Continued on next page...

Continued from previous page...

Mol	Chain	Residues	Atoms			ZeroOcc	AltConf
			Total	C	N		
4	B	1	3	2	1	0	0
4	B	1	3	2	1	0	0
4	B	1	3	2	1	0	0
4	B	1	3	2	1	0	0
4	B	1	3	2	1	0	0
4	B	1	3	2	1	0	0
4	B	1	3	2	1	0	0
4	B	1	3	2	1	0	0
4	B	1	3	2	1	0	0
4	B	1	3	2	1	0	0
4	B	1	3	2	1	0	0
4	C	1	3	2	1	0	0
4	C	1	3	2	1	0	0
4	C	1	3	2	1	0	0
4	C	1	3	2	1	0	0
4	C	1	3	2	1	0	0
4	D	1	3	2	1	0	0
4	D	1	3	2	1	0	0
4	D	1	3	2	1	0	0
4	D	1	3	2	1	0	0


- Molecule 5 is water.

Mol	Chain	Residues	Atoms	ZeroOcc	AltConf
5	A	17	Total O 17 17	0	0
5	B	18	Total O 18 18	0	0
5	C	26	Total O 26 26	0	0
5	D	8	Total O 8 8	0	0

3 Residue-property plots [i](#)

These plots are drawn for all protein, RNA, DNA and oligosaccharide chains in the entry. The first graphic for a chain summarises the proportions of the various outlier classes displayed in the second graphic. The second graphic shows the sequence view annotated by issues in geometry and electron density. Residues are color-coded according to the number of geometric quality criteria for which they contain at least one outlier: green = 0, yellow = 1, orange = 2 and red = 3 or more. A red dot above a residue indicates a poor fit to the electron density ($RSRZ > 2$). Stretches of 2 or more consecutive residues without any outlier are shown as a green connector. Residues present in the sample, but not in the model, are shown in grey.

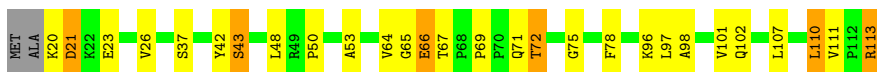
- Molecule 1: Potassium channel protein

Chain A:  77% 17% . .



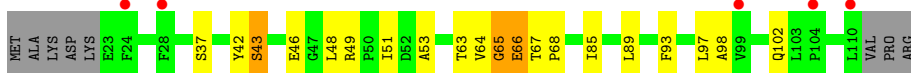
- Molecule 1: Potassium channel protein

Chain B:  69% 23% 6% .




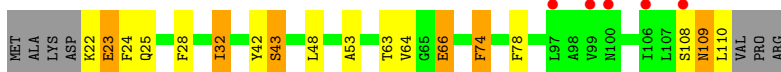
- Molecule 1: Potassium channel protein

Chain C:  5% 71% 18% . 8%



- Molecule 1: Potassium channel protein

Chain D:  5% 74% 12% 6% 7%



4 Data and refinement statistics i

Property	Value	Source
Space group	P 2 2 21	Depositor
Cell constants a, b, c, α , β , γ	89.89Å 67.68Å 67.62Å 90.00° 90.00° 90.00°	Depositor
Resolution (Å)	47.84 – 2.30 47.84 – 2.30	Depositor EDS
% Data completeness (in resolution range)	(Not available) (47.84-2.30) 99.3 (47.84-2.30)	Depositor EDS
R_{merge}	(Not available)	Depositor
R_{sym}	(Not available)	Depositor
$\langle I/\sigma(I) \rangle$ ¹	2.58 (at 2.32Å)	Xtrriage
Refinement program	REFMAC 5.7.0	Depositor
R, R_{free}	0.207 , 0.248 0.223 , 0.250	Depositor DCC
R_{free} test set	968 reflections (5.16%)	wwPDB-VP
Wilson B-factor (Å ²)	36.8	Xtrriage
Anisotropy	0.645	Xtrriage
Bulk solvent k_{sol} (e/Å ³), B_{sol} (Å ²)	0.33 , 88.3	EDS
L-test for twinning ²	$\langle L \rangle = 0.42$, $\langle L^2 \rangle = 0.25$	Xtrriage
Estimated twinning fraction	0.287 for -h,l,k	Xtrriage
F_o, F_c correlation	0.93	EDS
Total number of atoms	3030	wwPDB-VP
Average B, all atoms (Å ²)	45.0	wwPDB-VP

Xtrriage's analysis on translational NCS is as follows: *The largest off-origin peak in the Patterson function is 4.65% of the height of the origin peak. No significant pseudotranslation is detected.*

¹Intensities estimated from amplitudes.

²Theoretical values of $\langle |L| \rangle$, $\langle L^2 \rangle$ for acentric reflections are 0.5, 0.333 respectively for untwinned datasets, and 0.375, 0.2 for perfectly twinned datasets.

5 Model quality [i](#)

5.1 Standard geometry [i](#)

Bond lengths and bond angles in the following residue types are not validated in this section: MPD, DMN

The Z score for a bond length (or angle) is the number of standard deviations the observed value is removed from the expected value. A bond length (or angle) with $|Z| > 5$ is considered an outlier worth inspection. RMSZ is the root-mean-square of all Z scores of the bond lengths (or angles).

Mol	Chain	Bond lengths		Bond angles	
		RMSZ	# Z >5	RMSZ	# Z >5
1	A	0.66	0/737	0.81	0/1009
1	B	0.63	0/740	0.74	1/1014 (0.1%)
1	C	0.68	0/607	0.78	1/837 (0.1%)
1	D	0.69	0/655	0.82	1/898 (0.1%)
All	All	0.66	0/2739	0.79	3/3758 (0.1%)

There are no bond length outliers.

All (3) bond angle outliers are listed below:

Mol	Chain	Res	Type	Atoms	Z	Observed(°)	Ideal(°)
1	B	65	GLY	N-CA-C	5.39	126.57	113.10
1	D	32	ILE	CB-CA-C	-5.15	101.31	111.60
1	C	65	GLY	N-CA-C	5.10	125.85	113.10

There are no chirality outliers.

There are no planarity outliers.

5.2 Too-close contacts [i](#)

In the following table, the Non-H and H(model) columns list the number of non-hydrogen atoms and hydrogen atoms in the chain respectively. The H(added) column lists the number of hydrogen atoms added and optimized by MolProbity. The Clashes column lists the number of clashes within the asymmetric unit, whereas Symm-Clashes lists symmetry-related clashes.

Mol	Chain	Non-H	H(model)	H(added)	Clashes	Symm-Clashes
1	A	711	0	704	17	0
1	B	722	0	735	34	1
1	C	596	0	529	27	1
1	D	640	0	589	27	0

Continued on next page...

Continued from previous page...

Mol	Chain	Non-H	H(model)	H(added)	Clashes	Symm-Clashes
2	A	35	0	14	0	0
2	B	45	0	18	0	0
2	C	45	0	18	6	0
2	D	20	0	8	4	0
3	A	24	0	42	0	0
3	B	32	0	56	8	0
3	C	16	0	28	2	0
4	A	6	0	14	0	0
4	B	42	0	98	15	1
4	C	15	0	35	15	1
4	D	12	0	28	0	0
5	A	17	0	0	3	0
5	B	18	0	0	3	0
5	C	26	0	0	6	0
5	D	8	0	0	3	0
All	All	3030	0	2916	103	2

The all-atom clashscore is defined as the number of clashes found per 1000 atoms (including hydrogen atoms). The all-atom clashscore for this structure is 18.

All (103) close contacts within the same asymmetric unit are listed below, sorted by their clash magnitude.

Atom-1	Atom-2	Interatomic distance (Å)	Clash overlap (Å)
1:D:24:PHE:O	5:D:304:HOH:O	1.56	1.17
1:B:64:VAL:O	4:B:201:DMN:C2	1.97	1.11
1:C:63:THR:O	4:C:201:DMN:C2	1.99	1.10
1:C:64:VAL:C	4:C:201:DMN:H21	1.73	1.08
1:B:64:VAL:O	4:B:201:DMN:H23	1.50	1.08
1:B:67:THR:HB	4:B:218:DMN:H32	1.37	1.02
1:C:63:THR:O	4:C:201:DMN:H22	1.59	1.00
5:C:317:HOH:O	1:D:66:GLU:HG2	1.62	0.98
5:A:301:HOH:O	1:B:66:GLU:HG2	1.65	0.94
1:C:65:GLY:O	1:D:66:GLU:HB3	1.70	0.88
1:A:64:VAL:O	4:B:201:DMN:H22	1.75	0.86
1:B:72:THR:HG22	1:B:75:GLY:H	1.41	0.85
1:D:74:PHE:CZ	5:D:305:HOH:O	2.29	0.85
1:B:64:VAL:O	4:B:201:DMN:H21	1.77	0.82
1:C:97:LEU:CB	5:C:320:HOH:O	2.28	0.81
1:C:102:GLN:CB	2:C:208:GLY:O	2.31	0.79
1:C:98:ALA:HA	2:C:208:GLY:O	1.82	0.79
1:D:22:LYS:N	1:D:23:GLU:HB2	2.01	0.76

Continued on next page...

Continued from previous page...

Atom-1	Atom-2	Interatomic distance (Å)	Clash overlap (Å)
1:A:65:GLY:O	1:B:66:GLU:HB3	1.86	0.74
1:C:93:PHE:CB	4:C:214:DMN:C3	2.67	0.72
1:D:22:LYS:HA	1:D:24:PHE:N	2.04	0.72
1:C:37:SER:HG	2:C:207:GLY:N	1.91	0.69
1:C:64:VAL:O	4:C:201:DMN:H21	1.92	0.68
1:C:93:PHE:CB	4:C:214:DMN:H32	2.23	0.68
1:D:74:PHE:CE1	5:D:305:HOH:O	2.47	0.66
1:B:111:VAL:O	5:B:302:HOH:O	2.14	0.65
1:D:22:LYS:HA	1:D:23:GLU:C	2.17	0.65
4:C:215:DMN:H32	5:C:314:HOH:O	1.97	0.64
1:B:64:VAL:C	4:B:201:DMN:C2	2.65	0.64
1:A:102:GLN:O	1:A:106:ILE:HG22	1.98	0.64
1:A:64:VAL:C	4:B:201:DMN:H22	2.19	0.64
1:C:68:PRO:HD3	4:C:216:DMN:H31	1.80	0.63
1:A:98:ALA:HA	1:A:102:GLN:HE21	1.63	0.63
1:C:68:PRO:HA	4:C:215:DMN:H33	1.80	0.63
4:C:215:DMN:C3	5:C:314:HOH:O	2.46	0.63
1:B:50:PRO:HD2	1:D:109:ASN:ND2	2.15	0.62
1:A:55:TYR:OH	1:A:66[B]:GLU:OE1	2.17	0.61
3:C:212:MPD:HM1	3:C:212:MPD:H53	1.84	0.60
2:C:202:GLY:N	3:C:211:MPD:HO2	2.01	0.59
1:B:64:VAL:C	4:B:201:DMN:H23	2.21	0.59
1:B:23:GLU:HG3	3:B:214:MPD:H52	1.86	0.58
1:B:98:ALA:HA	1:B:102:GLN:HE21	1.67	0.58
1:D:22:LYS:CA	1:D:23:GLU:HB2	2.34	0.57
1:D:28:PHE:CE2	1:D:32:ILE:HD11	2.39	0.57
1:C:63:THR:O	4:C:201:DMN:H21	2.01	0.56
1:B:71:GLN:CB	4:B:224:DMN:H31	2.35	0.56
1:B:23:GLU:HB2	3:B:214:MPD:HM2	1.88	0.54
1:B:26:VAL:HG11	3:B:214:MPD:H12	1.89	0.54
4:C:201:DMN:H33	1:D:63:THR:O	2.07	0.53
1:C:66:GLU:HG2	5:C:315:HOH:O	2.08	0.53
1:A:103:LEU:O	1:A:106:ILE:HG23	2.10	0.52
1:B:37:SER:HB2	3:B:211:MPD:H13	1.92	0.51
1:C:63:THR:HA	1:D:64:VAL:HG22	1.92	0.51
1:C:64:VAL:HG12	1:C:66:GLU:HG3	1.93	0.51
1:B:64:VAL:C	4:B:201:DMN:H21	2.29	0.51
1:B:23:GLU:CB	3:B:214:MPD:HM2	2.40	0.51
3:B:212:MPD:O4	4:B:216:DMN:H22	2.12	0.50
1:B:78:PHE:HD1	5:B:309:HOH:O	1.94	0.50
1:C:64:VAL:CA	4:C:201:DMN:H21	2.38	0.50

Continued on next page...

Continued from previous page...

Atom-1	Atom-2	Interatomic distance (Å)	Clash overlap (Å)
1:D:64:VAL:HG12	1:D:66:GLU:HG3	1.92	0.50
1:D:78:PHE:HE1	2:D:201:GLY:HA3	1.77	0.50
1:A:20:LYS:O	1:A:21:ASP:CB	2.59	0.50
1:C:64:VAL:C	4:C:201:DMN:C2	2.65	0.50
1:A:20:LYS:N	5:A:317:HOH:O	2.44	0.50
1:B:64:VAL:HG12	1:B:66:GLU:HG3	1.94	0.49
1:C:49:ARG:HB3	2:C:204:GLY:HA2	1.95	0.49
1:C:67:THR:O	1:D:66:GLU:HB2	2.13	0.49
1:D:22:LYS:CA	1:D:23:GLU:CB	2.90	0.49
1:A:32:ILE:HG21	5:A:313:HOH:O	2.12	0.48
1:B:113:ARG:HD2	5:B:317:HOH:O	2.13	0.47
1:A:42:TYR:HB2	1:A:53:ALA:HB1	1.97	0.47
1:A:63:THR:HG22	1:A:87:ILE:HD11	1.97	0.47
1:B:71:GLN:CB	4:B:224:DMN:C3	2.92	0.47
1:A:63:THR:HA	1:B:64:VAL:HG22	1.97	0.47
1:B:20:LYS:O	1:B:21:ASP:HB3	2.15	0.47
1:B:50:PRO:HD2	1:D:109:ASN:HD21	1.80	0.47
1:B:20:LYS:O	1:B:21:ASP:CB	2.63	0.46
1:C:43:SER:HB3	1:C:48:LEU:O	2.15	0.46
1:A:103:LEU:HA	1:A:106:ILE:CG2	2.46	0.46
1:C:46:GLU:HB3	5:C:310:HOH:O	2.15	0.46
1:D:43:SER:HB3	1:D:48:LEU:O	2.16	0.45
1:A:43:SER:HB3	1:A:48:LEU:O	2.15	0.45
1:C:42:TYR:HB2	1:C:53:ALA:HB1	1.98	0.45
1:B:110:LEU:HD12	1:B:110:LEU:HA	1.82	0.45
1:D:42:TYR:HB2	1:D:53:ALA:HB1	1.98	0.45
1:D:78:PHE:CE1	2:D:201:GLY:CA	3.01	0.44
1:B:43:SER:HB3	1:B:48:LEU:O	2.18	0.44
1:D:78:PHE:HE1	2:D:201:GLY:CA	2.30	0.44
1:D:78:PHE:CE1	2:D:201:GLY:HA3	2.52	0.44
1:A:63:THR:O	4:B:201:DMN:H21	2.19	0.43
1:B:42:TYR:HB2	1:B:53:ALA:HB1	2.00	0.43
1:C:64:VAL:O	4:C:201:DMN:C2	2.64	0.43
1:B:67:THR:CB	4:B:218:DMN:H32	2.28	0.42
1:D:23:GLU:O	1:D:25:GLN:N	2.45	0.42
1:C:51:ILE:CG2	2:C:204:GLY:OXT	2.68	0.42
1:B:97:LEU:O	1:B:101:VAL:HB	2.19	0.42
1:B:69:PRO:O	4:B:224:DMN:H23	2.21	0.41
1:D:108:SER:O	1:D:110:LEU:N	2.47	0.41
3:B:213:MPD:H11	1:C:85:ILE:HD11	2.03	0.41
1:D:23:GLU:HB3	1:D:24:PHE:H	1.68	0.41

Continued on next page...

Continued from previous page...

Atom-1	Atom-2	Interatomic distance (Å)	Clash overlap (Å)
1:B:23:GLU:HG3	3:B:214:MPD:C5	2.51	0.41
1:D:23:GLU:C	1:D:25:GLN:H	2.24	0.40

All (2) symmetry-related close contacts are listed below. The label for Atom-2 includes the symmetry operator and encoded unit-cell translations to be applied.

Atom-1	Atom-2	Interatomic distance (Å)	Clash overlap (Å)
1:C:63:THR:O	4:C:201:DMN:C3[4_567]	1.93	0.27
1:B:64:VAL:O	4:B:201:DMN:C3[4_556]	1.94	0.26

5.3 Torsion angles [i](#)

5.3.1 Protein backbone [i](#)

In the following table, the Percentiles column shows the percent Ramachandran outliers of the chain as a percentile score with respect to all X-ray entries followed by that with respect to entries of similar resolution.

The Analysed column shows the number of residues for which the backbone conformation was analysed, and the total number of residues.

Mol	Chain	Analysed	Favoured	Allowed	Outliers	Percentiles	
1	A	93/96 (97%)	91 (98%)	1 (1%)	1 (1%)	14	15
1	B	92/96 (96%)	89 (97%)	2 (2%)	1 (1%)	14	15
1	C	86/96 (90%)	84 (98%)	2 (2%)	0	100	100
1	D	87/96 (91%)	82 (94%)	4 (5%)	1 (1%)	14	15
All	All	358/384 (93%)	346 (97%)	9 (2%)	3 (1%)	19	23

All (3) Ramachandran outliers are listed below:

Mol	Chain	Res	Type
1	D	109	ASN
1	A	21	ASP
1	B	21	ASP

5.3.2 Protein sidechains [i](#)

In the following table, the Percentiles column shows the percent sidechain outliers of the chain as a percentile score with respect to all X-ray entries followed by that with respect to entries of similar resolution.

The Analysed column shows the number of residues for which the sidechain conformation was analysed, and the total number of residues.

Mol	Chain	Analysed	Rotameric	Outliers	Percentiles	
1	A	75/86 (87%)	70 (93%)	5 (7%)	16	21
1	B	79/86 (92%)	72 (91%)	7 (9%)	9	11
1	C	52/86 (60%)	49 (94%)	3 (6%)	20	27
1	D	60/86 (70%)	56 (93%)	4 (7%)	16	21
All	All	266/344 (77%)	247 (93%)	19 (7%)	16	19

All (19) residues with a non-rotameric sidechain are listed below:

Mol	Chain	Res	Type
1	A	43	SER
1	A	87	ILE
1	A	107	LEU
1	A	109[A]	ASN
1	A	109[B]	ASN
1	B	43	SER
1	B	66	GLU
1	B	72	THR
1	B	96	LYS
1	B	107	LEU
1	B	110	LEU
1	B	113	ARG
1	C	43	SER
1	C	66	GLU
1	C	89	LEU
1	D	23	GLU
1	D	43	SER
1	D	66	GLU
1	D	74	PHE

Sometimes sidechains can be flipped to improve hydrogen bonding and reduce clashes. All (4) such sidechains are listed below:

Mol	Chain	Res	Type
1	A	102	GLN
1	B	100	ASN
1	B	102	GLN
1	D	109	ASN

5.3.3 RNA [i](#)

There are no RNA molecules in this entry.

5.4 Non-standard residues in protein, DNA, RNA chains [i](#)

There are no non-standard protein/DNA/RNA residues in this entry.

5.5 Carbohydrates [i](#)

There are no monosaccharides in this entry.

5.6 Ligand geometry [i](#)

63 ligands are modelled in this entry.

In the following table, the Counts columns list the number of bonds (or angles) for which Mogul statistics could be retrieved, the number of bonds (or angles) that are observed in the model and the number of bonds (or angles) that are defined in the Chemical Component Dictionary. The Link column lists molecule types, if any, to which the group is linked. The Z score for a bond length (or angle) is the number of standard deviations the observed value is removed from the expected value. A bond length (or angle) with $|Z| > 2$ is considered an outlier worth inspection. RMSZ is the root-mean-square of all Z scores of the bond lengths (or angles).

Mol	Type	Chain	Res	Link	Bond lengths			Bond angles		
					Counts	RMSZ	$\# Z > 2$	Counts	RMSZ	$\# Z > 2$
2	GLY	B	207	-	4,4,4	1.06	0	3,4,4	1.70	1 (33%)
4	DMN	C	213	-	2,2,2	0.16	0	1,1,1	0.10	0
4	DMN	B	215	-	2,2,2	0.11	0	1,1,1	0.03	0
4	DMN	C	214	-	2,2,2	0.22	0	1,1,1	0.05	0
4	DMN	B	224	-	2,2,2	0.16	0	1,1,1	0.10	0
4	DMN	B	222	-	2,2,2	0.37	0	1,1,1	0.03	0
2	GLY	A	201	-	4,4,4	0.97	0	3,4,4	1.75	1 (33%)
4	DMN	D	207	-	2,2,2	0.07	0	1,1,1	0.02	0
3	MPD	C	211	-	7,7,7	0.28	0	9,10,10	0.47	0
4	DMN	B	216	-	2,2,2	0.11	0	1,1,1	0.11	0

Mol	Type	Chain	Res	Link	Bond lengths			Bond angles		
					Counts	RMSZ	# Z > 2	Counts	RMSZ	# Z > 2
2	GLY	C	209	-	4,4,4	1.13	1 (25%)	3,4,4	1.66	1 (33%)
2	GLY	B	208	-	4,4,4	0.95	0	3,4,4	1.79	1 (33%)
2	GLY	D	202	-	4,4,4	1.15	1 (25%)	3,4,4	1.97	2 (66%)
3	MPD	A	210	-	7,7,7	0.25	0	9,10,10	0.35	0
3	MPD	B	212	-	7,7,7	0.28	0	9,10,10	0.48	0
4	DMN	B	219	-	2,2,2	0.16	0	1,1,1	0.02	0
4	DMN	D	206	-	2,2,2	0.21	0	1,1,1	0.04	0
4	DMN	D	205	-	2,2,2	0.06	0	1,1,1	0.05	0
2	GLY	C	205	-	4,4,4	1.40	1 (25%)	3,4,4	1.31	0
2	GLY	B	203	-	4,4,4	1.19	1 (25%)	3,4,4	1.84	1 (33%)
4	DMN	B	221	-	2,2,2	0.19	0	1,1,1	0.00	0
3	MPD	B	211	-	7,7,7	0.46	0	9,10,10	1.12	1 (11%)
2	GLY	B	209	-	4,4,4	1.09	1 (25%)	3,4,4	1.67	1 (33%)
4	DMN	B	226	-	2,2,2	0.20	0	1,1,1	0.10	0
2	GLY	C	210	-	4,4,4	1.33	1 (25%)	3,4,4	1.83	2 (66%)
2	GLY	B	204	-	4,4,4	1.10	1 (25%)	3,4,4	1.80	2 (66%)
2	GLY	C	203	-	4,4,4	1.31	1 (25%)	3,4,4	1.41	1 (33%)
4	DMN	D	208	-	2,2,2	0.11	0	1,1,1	0.10	0
4	DMN	B	218	-	2,2,2	0.26	0	1,1,1	0.07	0
2	GLY	A	203	-	4,4,4	1.15	1 (25%)	3,4,4	1.60	0
4	DMN	B	220	-	2,2,2	0.20	0	1,1,1	0.02	0
2	GLY	A	205	-	4,4,4	1.09	0	3,4,4	1.73	2 (66%)
2	GLY	B	206	-	4,4,4	1.02	0	3,4,4	1.94	2 (66%)
4	DMN	B	223	-	2,2,2	0.17	0	1,1,1	0.03	0
2	GLY	B	205	-	4,4,4	0.87	0	3,4,4	1.73	1 (33%)
2	GLY	B	210	-	4,4,4	0.92	0	3,4,4	1.66	1 (33%)
3	MPD	C	212	-	7,7,7	0.39	0	9,10,10	0.80	0
2	GLY	A	202	-	4,4,4	1.01	0	3,4,4	1.52	0
4	DMN	B	227	-	2,2,2	0.40	0	1,1,1	0.12	0
4	DMN	B	225	-	2,2,2	0.23	0	1,1,1	0.04	0
2	GLY	B	202	-	4,4,4	1.03	0	3,4,4	1.89	2 (66%)
2	GLY	D	204	-	4,4,4	1.02	0	3,4,4	1.57	0
4	DMN	A	212	-	2,2,2	0.28	0	1,1,1	0.13	0
2	GLY	C	204	-	4,4,4	1.26	1 (25%)	3,4,4	2.10	2 (66%)
2	GLY	A	207	-	4,4,4	1.21	1 (25%)	3,4,4	1.46	0
2	GLY	A	204	-	4,4,4	0.99	0	3,4,4	1.68	1 (33%)
3	MPD	A	208	-	7,7,7	0.33	0	9,10,10	0.27	0
2	GLY	A	206	-	4,4,4	1.10	1 (25%)	3,4,4	1.67	1 (33%)

Mol	Type	Chain	Res	Link	Bond lengths			Bond angles		
					Counts	RMSZ	# Z > 2	Counts	RMSZ	# Z > 2
2	GLY	D	203	-	4,4,4	1.14	0	3,4,4	1.52	1 (33%)
2	GLY	C	207	-	4,4,4	1.04	0	3,4,4	1.31	0
3	MPD	B	214	-	7,7,7	0.49	0	9,10,10	1.07	1 (11%)
2	GLY	C	202	-	4,4,4	1.03	0	3,4,4	1.66	1 (33%)
2	GLY	C	208	-	4,4,4	1.16	1 (25%)	3,4,4	2.08	2 (66%)
2	GLY	C	206	-	4,4,4	1.33	1 (25%)	3,4,4	1.29	0
4	DMN	B	217	-	2,2,2	0.25	0	1,1,1	0.05	0
4	DMN	C	201	-	2,2,2	0.02	0	1,1,1	0.73	0
2	GLY	D	201	-	4,4,4	1.12	0	3,4,4	1.07	0
3	MPD	A	209	-	7,7,7	0.27	0	9,10,10	0.34	0
4	DMN	A	211	-	2,2,2	0.22	0	1,1,1	0.00	0
4	DMN	C	215	-	2,2,2	0.24	0	1,1,1	0.04	0
3	MPD	B	213	-	7,7,7	0.32	0	9,10,10	0.48	0
4	DMN	C	216	-	2,2,2	0.53	0	1,1,1	0.08	0
4	DMN	B	201	-	2,2,2	0.02	0	1,1,1	0.73	0

In the following table, the Chirals column lists the number of chiral outliers, the number of chiral centers analysed, the number of these observed in the model and the number defined in the Chemical Component Dictionary. Similar counts are reported in the Torsion and Rings columns. '-' means no outliers of that kind were identified.

Mol	Type	Chain	Res	Link	Chirals	Torsions	Rings
2	GLY	B	207	-	-	0/2/2/2	-
2	GLY	A	201	-	-	2/2/2/2	-
3	MPD	C	211	-	-	2/5/5/5	-
2	GLY	C	209	-	-	2/2/2/2	-
2	GLY	B	208	-	-	0/2/2/2	-
2	GLY	D	202	-	-	2/2/2/2	-
3	MPD	A	210	-	-	2/5/5/5	-
3	MPD	B	212	-	-	3/5/5/5	-
2	GLY	C	205	-	-	2/2/2/2	-
2	GLY	B	203	-	-	2/2/2/2	-
3	MPD	B	211	-	-	0/5/5/5	-
2	GLY	B	209	-	-	0/2/2/2	-
2	GLY	C	210	-	-	0/2/2/2	-
2	GLY	B	204	-	-	0/2/2/2	-
2	GLY	C	203	-	-	0/2/2/2	-
2	GLY	A	203	-	-	1/2/2/2	-
2	GLY	A	205	-	-	2/2/2/2	-

Continued on next page...

Continued from previous page...

Mol	Type	Chain	Res	Link	Chirals	Torsions	Rings
2	GLY	B	206	-	-	2/2/2/2	-
2	GLY	B	205	-	-	2/2/2/2	-
2	GLY	B	210	-	-	0/2/2/2	-
3	MPD	C	212	-	-	1/5/5/5	-
2	GLY	A	202	-	-	0/2/2/2	-
2	GLY	B	202	-	-	2/2/2/2	-
2	GLY	D	204	-	-	2/2/2/2	-
2	GLY	C	204	-	-	0/2/2/2	-
2	GLY	A	207	-	-	0/2/2/2	-
2	GLY	A	204	-	-	2/2/2/2	-
3	MPD	A	208	-	-	0/5/5/5	-
2	GLY	A	206	-	-	0/2/2/2	-
2	GLY	D	203	-	-	0/2/2/2	-
2	GLY	C	207	-	-	0/2/2/2	-
3	MPD	B	214	-	-	3/5/5/5	-
2	GLY	C	202	-	-	2/2/2/2	-
2	GLY	C	208	-	-	0/2/2/2	-
2	GLY	C	206	-	-	2/2/2/2	-
2	GLY	D	201	-	-	2/2/2/2	-
3	MPD	A	209	-	-	1/5/5/5	-
3	MPD	B	213	-	-	2/5/5/5	-

All (14) bond length outliers are listed below:

Mol	Chain	Res	Type	Atoms	Z	Observed(Å)	Ideal(Å)
2	C	205	GLY	OXT-C	-2.62	1.21	1.30
2	C	210	GLY	OXT-C	-2.50	1.22	1.30
2	C	206	GLY	OXT-C	-2.46	1.22	1.30
2	C	204	GLY	OXT-C	-2.44	1.22	1.30
2	C	203	GLY	OXT-C	-2.43	1.22	1.30
2	B	203	GLY	OXT-C	-2.33	1.22	1.30
2	A	207	GLY	OXT-C	-2.25	1.23	1.30
2	D	202	GLY	OXT-C	-2.21	1.23	1.30
2	C	209	GLY	OXT-C	-2.16	1.23	1.30
2	C	208	GLY	OXT-C	-2.16	1.23	1.30
2	A	203	GLY	OXT-C	-2.13	1.23	1.30
2	B	204	GLY	OXT-C	-2.09	1.23	1.30
2	B	209	GLY	OXT-C	-2.07	1.23	1.30
2	A	206	GLY	OXT-C	-2.06	1.23	1.30

All (31) bond angle outliers are listed below:

Mol	Chain	Res	Type	Atoms	Z	Observed(°)	Ideal(°)
2	C	204	GLY	OXT-C-O	-2.96	115.92	123.30
2	C	208	GLY	OXT-C-O	-2.69	116.60	123.30
2	D	202	GLY	OXT-C-O	-2.63	116.74	123.30
2	B	206	GLY	OXT-C-O	-2.61	116.79	123.30
3	B	214	MPD	O2-C2-C1	-2.56	99.86	108.08
2	B	203	GLY	OXT-C-O	-2.52	117.02	123.30
2	B	202	GLY	OXT-C-O	-2.38	117.37	123.30
2	C	208	GLY	OXT-C-CA	2.35	122.81	113.45
2	B	204	GLY	OXT-C-O	-2.34	117.46	123.30
2	B	208	GLY	OXT-C-CA	2.33	122.74	113.45
2	A	201	GLY	OXT-C-O	-2.30	117.56	123.30
2	A	206	GLY	OXT-C-O	-2.30	117.57	123.30
2	C	210	GLY	OXT-C-CA	2.27	122.49	113.45
2	D	203	GLY	OXT-C-O	-2.27	117.64	123.30
2	C	209	GLY	OXT-C-O	-2.24	117.73	123.30
2	B	205	GLY	OXT-C-CA	2.22	122.30	113.45
2	B	202	GLY	OXT-C-CA	2.19	122.18	113.45
2	B	207	GLY	OXT-C-O	-2.19	117.85	123.30
2	A	204	GLY	OXT-C-O	-2.18	117.86	123.30
2	D	202	GLY	OXT-C-CA	2.16	122.03	113.45
2	B	209	GLY	OXT-C-O	-2.14	117.96	123.30
2	A	205	GLY	OXT-C-CA	2.14	121.96	113.45
2	C	204	GLY	OXT-C-CA	2.12	121.89	113.45
2	C	210	GLY	OXT-C-O	-2.11	118.05	123.30
2	B	206	GLY	OXT-C-CA	2.09	121.78	113.45
2	C	202	GLY	OXT-C-CA	2.07	121.68	113.45
2	B	210	GLY	OXT-C-O	-2.05	118.20	123.30
2	C	203	GLY	OXT-C-O	-2.04	118.22	123.30
3	B	211	MPD	O2-C2-CM	2.03	114.60	108.08
2	B	204	GLY	OXT-C-CA	2.03	121.53	113.45
2	A	205	GLY	OXT-C-O	-2.01	118.30	123.30

There are no chirality outliers.

All (43) torsion outliers are listed below:

Mol	Chain	Res	Type	Atoms
2	A	201	GLY	O-C-CA-N
2	A	204	GLY	OXT-C-CA-N
2	A	205	GLY	O-C-CA-N
2	B	203	GLY	O-C-CA-N
2	B	205	GLY	OXT-C-CA-N

Continued on next page...

Continued from previous page...

Mol	Chain	Res	Type	Atoms
2	B	206	GLY	O-C-CA-N
2	B	206	GLY	OXT-C-CA-N
2	C	202	GLY	O-C-CA-N
2	C	205	GLY	O-C-CA-N
2	C	205	GLY	OXT-C-CA-N
2	C	209	GLY	O-C-CA-N
2	C	209	GLY	OXT-C-CA-N
2	D	201	GLY	O-C-CA-N
2	A	204	GLY	O-C-CA-N
2	B	202	GLY	O-C-CA-N
2	B	205	GLY	O-C-CA-N
2	C	206	GLY	O-C-CA-N
2	D	204	GLY	O-C-CA-N
2	A	201	GLY	OXT-C-CA-N
2	A	205	GLY	OXT-C-CA-N
2	B	202	GLY	OXT-C-CA-N
2	B	203	GLY	OXT-C-CA-N
2	C	202	GLY	OXT-C-CA-N
2	C	206	GLY	OXT-C-CA-N
2	D	201	GLY	OXT-C-CA-N
2	D	204	GLY	OXT-C-CA-N
2	A	203	GLY	OXT-C-CA-N
2	D	202	GLY	OXT-C-CA-N
3	B	212	MPD	O2-C2-C3-C4
3	A	209	MPD	C2-C3-C4-C5
3	A	210	MPD	C2-C3-C4-C5
3	B	212	MPD	C2-C3-C4-C5
3	B	213	MPD	C2-C3-C4-C5
3	C	212	MPD	C2-C3-C4-C5
3	B	214	MPD	O2-C2-C3-C4
3	B	214	MPD	C2-C3-C4-C5
3	C	211	MPD	C2-C3-C4-C5
2	D	202	GLY	O-C-CA-N
3	A	210	MPD	C2-C3-C4-O4
3	B	212	MPD	C2-C3-C4-O4
3	B	213	MPD	C2-C3-C4-O4
3	B	214	MPD	C2-C3-C4-O4
3	C	211	MPD	C2-C3-C4-O4

There are no ring outliers.

19 monomers are involved in 50 short contacts:

Mol	Chain	Res	Type	Clashes	Symm-Clashes
4	C	214	DMN	2	0
4	B	224	DMN	3	0
3	C	211	MPD	1	0
4	B	216	DMN	1	0
3	B	212	MPD	1	0
3	B	211	MPD	1	0
4	B	218	DMN	2	0
3	C	212	MPD	1	0
2	C	204	GLY	2	0
2	C	207	GLY	1	0
3	B	214	MPD	5	0
2	C	202	GLY	1	0
2	C	208	GLY	2	0
4	C	201	DMN	9	1
2	D	201	GLY	4	0
4	C	215	DMN	3	0
3	B	213	MPD	1	0
4	C	216	DMN	1	0
4	B	201	DMN	9	1

5.7 Other polymers [i](#)

There are no such residues in this entry.

5.8 Polymer linkage issues [i](#)

There are no chain breaks in this entry.

6 Fit of model and data [i](#)

6.1 Protein, DNA and RNA chains [i](#)

In the following table, the column labelled ‘#RSRZ> 2’ contains the number (and percentage) of RSRZ outliers, followed by percent RSRZ outliers for the chain as percentile scores relative to all X-ray entries and entries of similar resolution. The OWAB column contains the minimum, median, 95th percentile and maximum values of the occupancy-weighted average B-factor per residue. The column labelled ‘Q< 0.9’ lists the number of (and percentage) of residues with an average occupancy less than 0.9.

Mol	Chain	Analysed	<RSRZ>	#RSRZ>2	OWAB(Å ²)	Q<0.9
1	A	93/96 (96%)	-0.09	0 100 100	27, 40, 53, 64	0
1	B	94/96 (97%)	-0.11	0 100 100	26, 42, 57, 82	0
1	C	88/96 (91%)	0.20	5 (5%) 23 30	24, 40, 90, 96	0
1	D	89/96 (92%)	0.34	5 (5%) 24 30	24, 41, 87, 97	0
All	All	364/384 (94%)	0.08	10 (2%) 54 62	24, 41, 86, 97	0

All (10) RSRZ outliers are listed below:

Mol	Chain	Res	Type	RSRZ
1	C	99	VAL	6.8
1	C	24	PHE	5.0
1	C	110	LEU	3.2
1	C	28	PHE	3.1
1	D	97	LEU	2.8
1	D	100	ASN	2.8
1	D	108	SER	2.7
1	D	99	VAL	2.6
1	D	106	ILE	2.4
1	C	104	PRO	2.2

6.2 Non-standard residues in protein, DNA, RNA chains [i](#)

There are no non-standard protein/DNA/RNA residues in this entry.

6.3 Carbohydrates [i](#)

There are no monosaccharides in this entry.

6.4 Ligands i

In the following table, the Atoms column lists the number of modelled atoms in the group and the number defined in the chemical component dictionary. The B-factors column lists the minimum, median, 95th percentile and maximum values of B factors of atoms in the group. The column labelled 'Q< 0.9' lists the number of atoms with occupancy less than 0.9.

Mol	Type	Chain	Res	Atoms	RSCC	RSR	B-factors(Å ²)	Q<0.9
2	GLY	B	209	5/5	0.34	0.30	72,76,77,78	0
2	GLY	B	206	5/5	0.56	0.33	49,50,52,57	0
2	GLY	B	210	5/5	0.61	0.27	48,49,50,50	0
2	GLY	A	204	5/5	0.62	0.23	64,65,68,70	0
4	DMN	B	223	3/3	0.67	0.20	49,49,51,52	0
2	GLY	C	202	5/5	0.69	0.16	72,79,83,86	0
2	GLY	A	201	5/5	0.71	0.27	51,54,60,61	0
4	DMN	B	201	3/3	0.71	0.64	20,20,20,20	3
2	GLY	A	202	5/5	0.71	0.15	60,65,69,73	0
2	GLY	D	204	5/5	0.74	0.21	55,56,62,62	0
4	DMN	C	214	3/3	0.74	0.20	32,32,34,35	0
2	GLY	C	210	5/5	0.75	0.23	46,48,55,58	0
2	GLY	A	205	5/5	0.75	0.22	47,48,52,60	0
3	MPD	C	211	8/8	0.75	0.17	59,65,75,77	0
2	GLY	B	204	5/5	0.76	0.16	52,55,56,59	0
4	DMN	B	218	3/3	0.76	0.22	38,38,38,39	0
4	DMN	D	206	3/3	0.76	0.28	79,79,81,81	0
3	MPD	B	212	8/8	0.77	0.21	53,56,59,59	0
2	GLY	C	209	5/5	0.79	0.17	91,92,93,95	0
4	DMN	C	201	3/3	0.79	0.63	20,20,20,20	3
3	MPD	A	208	8/8	0.79	0.19	67,69,72,72	0
2	GLY	D	202	5/5	0.79	0.13	51,51,55,61	0
3	MPD	B	213	8/8	0.80	0.24	58,63,68,69	0
2	GLY	B	207	5/5	0.80	0.23	61,61,62,65	0
4	DMN	D	207	3/3	0.80	0.15	44,44,44,46	0
2	GLY	A	207	5/5	0.81	0.15	46,52,56,65	0
2	GLY	B	205	5/5	0.81	0.15	42,47,54,57	0
4	DMN	C	213	3/3	0.82	0.18	49,49,52,54	0
3	MPD	A	210	8/8	0.84	0.14	76,83,85,89	0
2	GLY	D	203	5/5	0.84	0.14	51,59,61,64	0
2	GLY	C	205	5/5	0.85	0.14	38,43,53,57	0
4	DMN	B	215	3/3	0.85	0.17	44,44,46,47	0
3	MPD	A	209	8/8	0.85	0.21	64,65,67,68	0
4	DMN	B	226	3/3	0.86	0.12	34,34,36,37	0
4	DMN	B	217	3/3	0.86	0.18	45,45,45,46	0
4	DMN	D	208	3/3	0.86	0.19	42,42,43,47	0
3	MPD	C	212	8/8	0.87	0.21	41,46,54,54	0

Continued on next page...

Continued from previous page...

Mol	Type	Chain	Res	Atoms	RSCC	RSR	B-factors(Å ²)	Q<0.9
3	MPD	B	211	8/8	0.87	0.13	23,27,29,33	0
4	DMN	D	205	3/3	0.87	0.18	43,43,44,49	0
3	MPD	B	214	8/8	0.88	0.21	36,40,44,47	0
2	GLY	C	208	5/5	0.88	0.15	41,49,63,67	0
4	DMN	B	219	3/3	0.89	0.13	41,41,42,43	0
2	GLY	B	202	5/5	0.89	0.18	42,45,54,59	0
2	GLY	A	203	5/5	0.89	0.24	51,59,61,61	0
2	GLY	C	203	5/5	0.89	0.14	50,55,61,62	0
2	GLY	C	204	5/5	0.89	0.15	44,45,47,49	0
2	GLY	B	208	5/5	0.90	0.22	55,58,62,62	0
4	DMN	B	216	3/3	0.90	0.15	43,43,47,49	0
4	DMN	B	224	3/3	0.92	0.12	38,38,39,39	0
4	DMN	B	227	3/3	0.92	0.13	20,20,20,20	0
4	DMN	B	225	3/3	0.92	0.14	50,50,56,59	0
2	GLY	C	207	5/5	0.93	0.09	49,50,53,57	0
2	GLY	C	206	5/5	0.93	0.19	57,59,64,71	0
4	DMN	A	211	3/3	0.93	0.27	54,54,57,59	0
4	DMN	C	215	3/3	0.94	0.10	29,29,30,34	0
2	GLY	B	203	5/5	0.94	0.18	53,56,58,59	0
2	GLY	A	206	5/5	0.94	0.09	48,53,54,58	0
4	DMN	B	220	3/3	0.94	0.12	53,53,55,55	0
4	DMN	B	221	3/3	0.94	0.12	50,50,51,52	0
4	DMN	B	222	3/3	0.95	0.20	78,78,79,81	0
4	DMN	C	216	3/3	0.95	0.12	33,33,34,36	0
4	DMN	A	212	3/3	0.96	0.11	36,36,37,37	0
2	GLY	D	201	5/5	0.97	0.13	45,53,54,56	0

6.5 Other polymers [\(i\)](#)

There are no such residues in this entry.