



# Full wwPDB X-ray Structure Validation Report ⓘ

May 21, 2020 – 11:31 pm BST

PDB ID : 4L1X  
Title : Crystal Structure of Human 3-alpha Hydroxysteroid Dehydrogenase Type 3 V54L Mutant in Complex with NADP<sup>+</sup> and Progesterone  
Authors : Zhang, B.; Hu, X.-J.; Lin, S.-X.  
Deposited on : 2013-06-03  
Resolution : 2.00 Å(reported)

This is a Full wwPDB X-ray Structure Validation Report for a publicly released PDB entry.

We welcome your comments at [validation@mail.wwpdb.org](mailto:validation@mail.wwpdb.org)

A user guide is available at

<https://www.wwpdb.org/validation/2017/XrayValidationReportHelp>

with specific help available everywhere you see the ⓘ symbol.

---

The following versions of software and data (see [references ⓘ](#)) were used in the production of this report:

MolProbity : 4.02b-467  
Mogul : 1.8.5 (274361), CSD as541be (2020)  
Xtriage (Phenix) : 1.13  
EDS : 2.11  
buster-report : 1.1.7 (2018)  
Percentile statistics : 20191225.v01 (using entries in the PDB archive December 25th 2019)  
Refmac : 5.8.0158  
CCP4 : 7.0.044 (Gargrove)  
Ideal geometry (proteins) : Engh & Huber (2001)  
Ideal geometry (DNA, RNA) : Parkinson et al. (1996)  
Validation Pipeline (wwPDB-VP) : 2.11

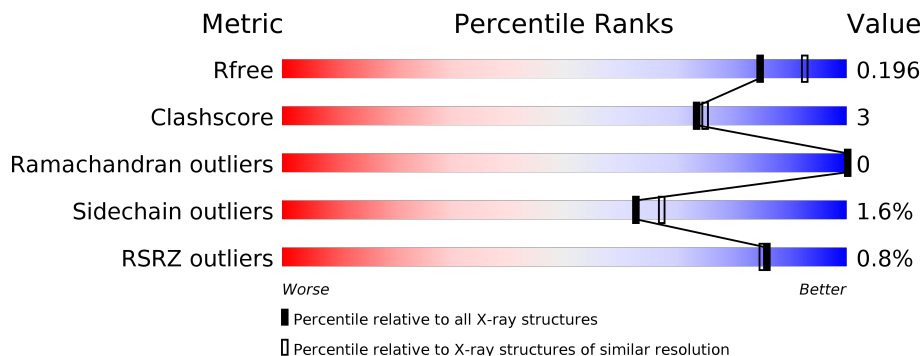
# 1 Overall quality at a glance

The following experimental techniques were used to determine the structure:

*X-RAY DIFFRACTION*

The reported resolution of this entry is 2.00 Å.

Percentile scores (ranging between 0-100) for global validation metrics of the entry are shown in the following graphic. The table shows the number of entries on which the scores are based.



Metric	Whole archive (#Entries)	Similar resolution (#Entries, resolution range(Å))
$R_{free}$	130704	8085 (2.00-2.00)
Clashscore	141614	9178 (2.00-2.00)
Ramachandran outliers	138981	9054 (2.00-2.00)
Sidechain outliers	138945	9053 (2.00-2.00)
RSRZ outliers	127900	7900 (2.00-2.00)

The table below summarises the geometric issues observed across the polymeric chains and their fit to the electron density. The red, orange, yellow and green segments on the lower bar indicate the fraction of residues that contain outliers for  $\geq 3$ , 2, 1 and 0 types of geometric quality criteria respectively. A grey segment represents the fraction of residues that are not modelled. The numeric value for each fraction is indicated below the corresponding segment, with a dot representing fractions  $\leq 5\%$ . The upper red bar (where present) indicates the fraction of residues that have poor fit to the electron density. The numeric value is given above the bar.

Mol	Chain	Length	Quality of chain
1	A	325	 94% 6%
1	B	325	 2% 90% 9%

## 2 Entry composition

There are 5 unique types of molecules in this entry. The entry contains 5908 atoms, of which 0 are hydrogens and 0 are deuteriums.

In the tables below, the ZeroOcc column contains the number of atoms modelled with zero occupancy, the AltConf column contains the number of residues with at least one atom in alternate conformation and the Trace column contains the number of residues modelled with at most 2 atoms.

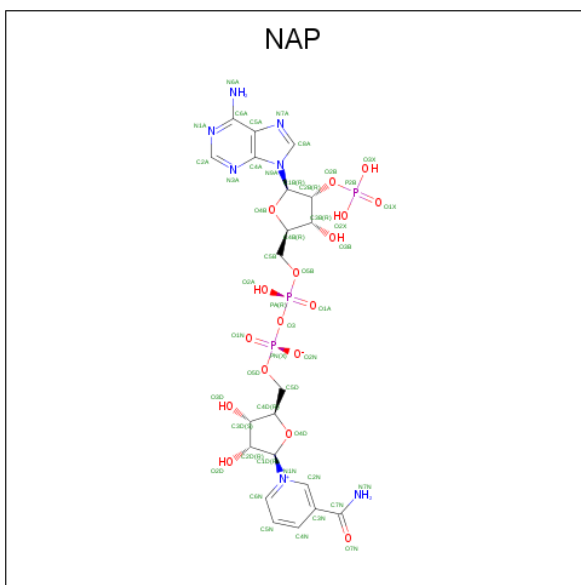
- Molecule 1 is a protein called Aldo-keto reductase family 1 member C2.

Mol	Chain	Residues	Atoms					ZeroOcc	AltConf	Trace
			Total	C	N	O	S			
1	A	325	2603	1666	447	479	11	0	0	0
1	B	325	2609	1670	447	481	11	0	1	0

There are 8 discrepancies between the modelled and reference sequences:

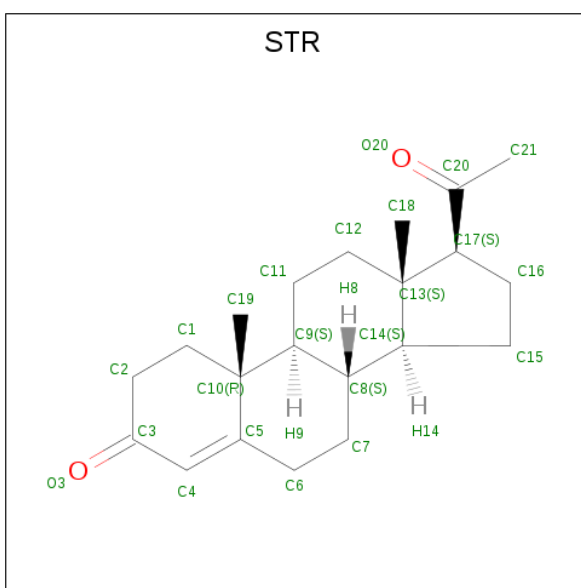
Chain	Residue	Modelled	Actual	Comment	Reference
A	-1	SER	-	EXPRESSION TAG	UNP P52895
A	0	VAL	-	EXPRESSION TAG	UNP P52895
A	1	ASP	-	EXPRESSION TAG	UNP P52895
A	54	LEU	VAL	ENGINEERED MUTATION	UNP P52895
B	-1	SER	-	EXPRESSION TAG	UNP P52895
B	0	VAL	-	EXPRESSION TAG	UNP P52895
B	1	ASP	-	EXPRESSION TAG	UNP P52895
B	54	LEU	VAL	ENGINEERED MUTATION	UNP P52895

- Molecule 2 is NADP NICOTINAMIDE-ADENINE-DINUCLEOTIDE PHOSPHATE (three-letter code: NAP) (formula: C<sub>21</sub>H<sub>28</sub>N<sub>7</sub>O<sub>17</sub>P<sub>3</sub>).



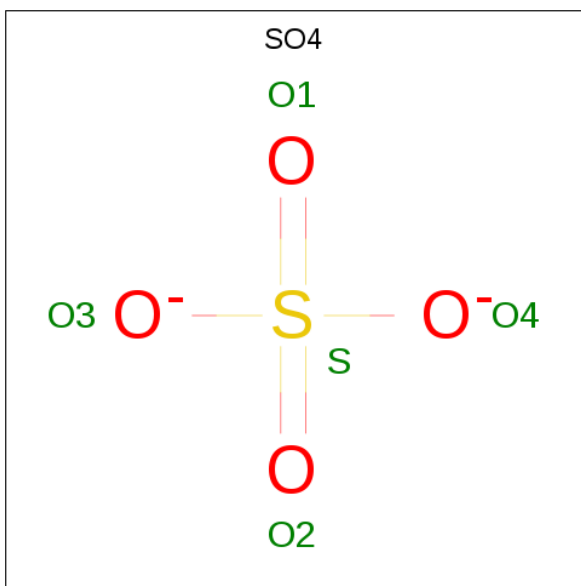
Mol	Chain	Residues	Atoms				ZeroOcc	AltConf	
			Total	C	N	O			P
2	A	1	Total	C	N	O	P	0	0
			48	21	7	17	3		
2	B	1	Total	C	N	O	P	0	0
			48	21	7	17	3		

- Molecule 3 is PROGESTERONE (three-letter code: STR) (formula: C<sub>21</sub>H<sub>30</sub>O<sub>2</sub>).



Mol	Chain	Residues	Atoms			ZeroOcc	AltConf
			Total	C	O		
3	A	1	Total	C	O	0	0
			23	21	2		
3	B	1	Total	C	O	0	0
			23	21	2		

- Molecule 4 is SULFATE ION (three-letter code: SO4) (formula: O<sub>4</sub>S).



Mol	Chain	Residues	Atoms	ZeroOcc	AltConf
4	A	1	Total O S 5 4 1	0	0
4	B	1	Total O S 5 4 1	0	0

- Molecule 5 is water.

Mol	Chain	Residues	Atoms	ZeroOcc	AltConf
5	A	298	Total O 298 298	0	0
5	B	246	Total O 246 246	0	0

### 3 Residue-property plots [i](#)


These plots are drawn for all protein, RNA and DNA chains in the entry. The first graphic for a chain summarises the proportions of the various outlier classes displayed in the second graphic. The second graphic shows the sequence view annotated by issues in geometry and electron density. Residues are color-coded according to the number of geometric quality criteria for which they contain at least one outlier: green = 0, yellow = 1, orange = 2 and red = 3 or more. A red dot above a residue indicates a poor fit to the electron density ( $RSRZ > 2$ ). Stretches of 2 or more consecutive residues without any outlier are shown as a green connector. Residues present in the sample, but not in the model, are shown in grey.

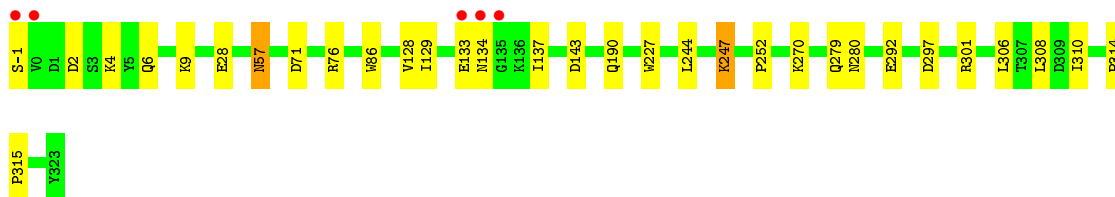
- Molecule 1: Aldo-keto reductase family 1 member C2

Chain A: 



- Molecule 1: Aldo-keto reductase family 1 member C2

Chain B: 



## 4 Data and refinement statistics

Property	Value	Source
Space group	P 1 21 1	Depositor
Cell constants a, b, c, $\alpha$ , $\beta$ , $\gamma$	53.14Å 87.10Å 76.87Å 90.00° 106.31° 90.00°	Depositor
Resolution (Å)	24.60 – 2.00 24.47 – 2.00	Depositor EDS
% Data completeness (in resolution range)	98.7 (24.60-2.00) 98.8 (24.47-2.00)	Depositor EDS
$R_{merge}$	(Not available)	Depositor
$R_{sym}$	(Not available)	Depositor
$\langle I/\sigma(I) \rangle$ <sup>1</sup>	14.10 (at 1.99Å)	Xtrriage
Refinement program	REFMAC 5.7.0029	Depositor
R, $R_{free}$	0.140 , 0.183 0.153 , 0.196	Depositor DCC
$R_{free}$ test set	2263 reflections (5.04%)	wwPDB-VP
Wilson B-factor (Å <sup>2</sup> )	9.1	Xtrriage
Anisotropy	0.178	Xtrriage
Bulk solvent $k_{sol}$ (e/Å <sup>3</sup> ), $B_{sol}$ (Å <sup>2</sup> )	0.40 , 52.7	EDS
L-test for twinning <sup>2</sup>	$\langle  L  \rangle = 0.49$ , $\langle L^2 \rangle = 0.32$	Xtrriage
Estimated twinning fraction	No twinning to report.	Xtrriage
$F_o, F_c$ correlation	0.95	EDS
Total number of atoms	5908	wwPDB-VP
Average B, all atoms (Å <sup>2</sup> )	11.0	wwPDB-VP

Xtrriage's analysis on translational NCS is as follows: *The largest off-origin peak in the Patterson function is 5.16% of the height of the origin peak. No significant pseudotranslation is detected.*

<sup>1</sup>Intensities estimated from amplitudes.

<sup>2</sup>Theoretical values of  $\langle |L| \rangle$ ,  $\langle L^2 \rangle$  for acentric reflections are 0.5, 0.333 respectively for untwinned datasets, and 0.375, 0.2 for perfectly twinned datasets.

## 5 Model quality [i](#)

### 5.1 Standard geometry [i](#)

Bond lengths and bond angles in the following residue types are not validated in this section: NAP, SO4, STR

The Z score for a bond length (or angle) is the number of standard deviations the observed value is removed from the expected value. A bond length (or angle) with  $|Z| > 5$  is considered an outlier worth inspection. RMSZ is the root-mean-square of all Z scores of the bond lengths (or angles).

Mol	Chain	Bond lengths		Bond angles	
		RMSZ	# Z  >5	RMSZ	# Z  >5
1	A	1.04	2/2664 (0.1%)	0.94	3/3608 (0.1%)
1	B	1.02	4/2673 (0.1%)	0.90	5/3620 (0.1%)
All	All	1.03	6/5337 (0.1%)	0.92	8/7228 (0.1%)

All (6) bond length outliers are listed below:

Mol	Chain	Res	Type	Atoms	Z	Observed(Å)	Ideal(Å)
1	A	77	GLU	CD-OE2	5.86	1.32	1.25
1	B	227	TRP	NE1-CE2	-5.56	1.30	1.37
1	B	252	PRO	N-CD	5.45	1.55	1.47
1	B	315	PRO	N-CD	5.31	1.55	1.47
1	B	314	PRO	N-CD	5.09	1.54	1.47
1	A	174	GLU	CD-OE1	5.06	1.31	1.25

All (8) bond angle outliers are listed below:

Mol	Chain	Res	Type	Atoms	Z	Observed(°)	Ideal(°)
1	A	301	ARG	NE-CZ-NH2	-8.24	116.18	120.30
1	A	71	ASP	CB-CG-OD1	8.10	125.59	118.30
1	B	71	ASP	CB-CG-OD1	7.26	124.84	118.30
1	B	301	ARG	NE-CZ-NH2	-6.29	117.15	120.30
1	A	71	ASP	CB-CG-OD2	-6.19	112.73	118.30
1	B	143	ASP	CB-CG-OD1	6.13	123.82	118.30
1	B	297	ASP	CB-CG-OD2	-5.46	113.38	118.30
1	B	76	ARG	NE-CZ-NH2	-5.18	117.71	120.30

There are no chirality outliers.

There are no planarity outliers.



## 5.2 Too-close contacts [i](#)

In the following table, the Non-H and H(model) columns list the number of non-hydrogen atoms and hydrogen atoms in the chain respectively. The H(added) column lists the number of hydrogen atoms added and optimized by MolProbity. The Clashes column lists the number of clashes within the asymmetric unit, whereas Symm-Clashes lists symmetry related clashes.

Mol	Chain	Non-H	H(model)	H(added)	Clashes	Symm-Clashes
1	A	2603	0	2610	16	0
1	B	2609	0	2616	19	0
2	A	48	0	25	7	0
2	B	48	0	25	5	0
3	A	23	0	30	2	0
3	B	23	0	30	3	0
4	A	5	0	0	0	0
4	B	5	0	0	0	0
5	A	298	0	0	7	0
5	B	246	0	0	3	0
All	All	5908	0	5336	35	0

The all-atom clashscore is defined as the number of clashes found per 1000 atoms (including hydrogen atoms). The all-atom clashscore for this structure is 3.

All (35) close contacts within the same asymmetric unit are listed below, sorted by their clash magnitude.

Atom-1	Atom-2	Interatomic distance (Å)	Clash overlap (Å)
3:B:402:STR:H213	5:B:569:HOH:O	1.52	1.09
3:A:402:STR:H213	5:A:612:HOH:O	1.61	0.99
1:B:280:ASN:HD21	2:B:401:NAP:H61A	1.27	0.81
1:A:27:ALA:O	5:A:700:HOH:O	2.05	0.73
1:A:279:GLN:NE2	2:A:401:NAP:H62A	1.98	0.60
1:B:280:ASN:ND2	2:B:401:NAP:H61A	1.97	0.59
1:A:57:ASN:HD22	1:A:57:ASN:C	2.07	0.57
1:B:4:LYS:HE2	5:B:684:HOH:O	2.04	0.57
1:B:129:ILE:HG13	3:B:402:STR:H61	1.88	0.56
1:B:270:LYS:O	2:B:401:NAP:H8A	2.07	0.55
1:B:57:ASN:HD22	1:B:57:ASN:C	2.08	0.55
1:A:32:SER:O	5:A:798:HOH:O	2.18	0.55
1:B:279:GLN:NE2	2:B:401:NAP:H62A	2.04	0.54
1:A:280:ASN:HD21	2:A:401:NAP:H61A	1.55	0.52
1:A:149:GLU:HG3	1:A:179:LYS:HE3	1.90	0.52
1:A:6:GLN:HE21	1:B:9:LYS:H	1.57	0.52
1:A:9:LYS:H	1:B:6:GLN:NE2	2.09	0.50

*Continued on next page...*

Continued from previous page...

Atom-1	Atom-2	Interatomic distance (Å)	Clash overlap (Å)
1:B:308:LEU:HD21	3:B:402:STR:H161	1.94	0.49
1:B:-1:SER:CB	1:B:2:ASP:OD1	2.62	0.48
1:A:227:TRP:CZ2	3:A:402:STR:H62	2.49	0.47
1:B:244:LEU:HD22	1:B:292:GLU:HG2	1.97	0.47
1:A:221:SER:HA	2:A:401:NAP:O1N	2.16	0.46
1:B:137:ILE:HD11	1:B:310:ILE:HD12	1.96	0.46
1:A:9:LYS:H	1:B:6:GLN:HE21	1.63	0.46
1:A:33:LYS:HE3	5:A:796:HOH:O	2.16	0.45
1:B:128:VAL:O	1:B:129:ILE:HD13	2.16	0.45
1:A:33:LYS:CE	5:A:796:HOH:O	2.65	0.45
1:B:247:LYS:HE2	5:B:658:HOH:O	2.18	0.44
1:A:6:GLN:NE2	1:B:9:LYS:H	2.17	0.43
1:B:86:TRP:HA	1:B:86:TRP:CE3	2.54	0.43
2:A:401:NAP:C3N	5:A:612:HOH:O	2.67	0.42
1:B:190:GLN:OE1	2:B:401:NAP:H2N	2.20	0.42
2:A:401:NAP:C4N	5:A:612:HOH:O	2.68	0.41
1:A:217:SER:HA	2:A:401:NAP:O1A	2.21	0.41
1:A:280:ASN:ND2	2:A:401:NAP:H61A	2.19	0.41

There are no symmetry-related clashes.

## 5.3 Torsion angles [i](#)

### 5.3.1 Protein backbone [i](#)

In the following table, the Percentiles column shows the percent Ramachandran outliers of the chain as a percentile score with respect to all X-ray entries followed by that with respect to entries of similar resolution.

The Analysed column shows the number of residues for which the backbone conformation was analysed, and the total number of residues.

Mol	Chain	Analysed	Favoured	Allowed	Outliers	Percentiles	
1	A	323/325 (99%)	316 (98%)	7 (2%)	0	100	100
1	B	324/325 (100%)	315 (97%)	9 (3%)	0	100	100
All	All	647/650 (100%)	631 (98%)	16 (2%)	0	100	100

There are no Ramachandran outliers to report.

### 5.3.2 Protein sidechains [i](#)

In the following table, the Percentiles column shows the percent sidechain outliers of the chain as a percentile score with respect to all X-ray entries followed by that with respect to entries of similar resolution.

The Analysed column shows the number of residues for which the sidechain conformation was analysed, and the total number of residues.

Mol	Chain	Analysed	Rotameric	Outliers	Percentiles	
1	A	287/287 (100%)	284 (99%)	3 (1%)	76	81
1	B	288/287 (100%)	282 (98%)	6 (2%)	53	57
All	All	575/574 (100%)	566 (98%)	9 (2%)	62	67

All (9) residues with a non-rotameric sidechain are listed below:

Mol	Chain	Res	Type
1	A	57	ASN
1	A	246	LYS
1	A	306	LEU
1	B	28	GLU
1	B	57	ASN
1	B	133	GLU
1	B	134	ASN
1	B	247	LYS
1	B	306	LEU

Some sidechains can be flipped to improve hydrogen bonding and reduce clashes. All (12) such sidechains are listed below:

Mol	Chain	Res	Type
1	A	6	GLN
1	A	57	ASN
1	A	105	ASN
1	A	134	ASN
1	A	279	GLN
1	A	280	ASN
1	B	6	GLN
1	B	57	ASN
1	B	105	ASN
1	B	275	GLN
1	B	279	GLN
1	B	280	ASN

### 5.3.3 RNA [i](#)

There are no RNA molecules in this entry.

## 5.4 Non-standard residues in protein, DNA, RNA chains [i](#)

There are no non-standard protein/DNA/RNA residues in this entry.

## 5.5 Carbohydrates [i](#)

There are no carbohydrates in this entry.

## 5.6 Ligand geometry [i](#)

6 ligands are modelled in this entry.

In the following table, the Counts columns list the number of bonds (or angles) for which Mogul statistics could be retrieved, the number of bonds (or angles) that are observed in the model and the number of bonds (or angles) that are defined in the Chemical Component Dictionary. The Link column lists molecule types, if any, to which the group is linked. The Z score for a bond length (or angle) is the number of standard deviations the observed value is removed from the expected value. A bond length (or angle) with  $|Z| > 2$  is considered an outlier worth inspection. RMSZ is the root-mean-square of all Z scores of the bond lengths (or angles).

Mol	Type	Chain	Res	Link	Bond lengths			Bond angles		
					Counts	RMSZ	# Z  > 2	Counts	RMSZ	# Z  > 2
2	NAP	A	401	-	45,52,52	1.86	10 (22%)	56,80,80	2.29	18 (32%)
3	STR	B	402	-	26,26,26	1.53	7 (26%)	42,42,42	1.91	10 (23%)
4	SO4	A	403	-	4,4,4	1.80	1 (25%)	6,6,6	0.66	0
3	STR	A	402	-	26,26,26	1.22	2 (7%)	42,42,42	1.59	9 (21%)
2	NAP	B	401	-	45,52,52	1.87	12 (26%)	56,80,80	2.29	17 (30%)
4	SO4	B	403	-	4,4,4	0.60	0	6,6,6	1.35	1 (16%)

In the following table, the Chirals column lists the number of chiral outliers, the number of chiral centers analysed, the number of these observed in the model and the number defined in the Chemical Component Dictionary. Similar counts are reported in the Torsion and Rings columns. '-' means no outliers of that kind were identified.

Mol	Type	Chain	Res	Link	Chirals	Torsions	Rings
2	NAP	B	401	-	-	5/31/67/67	0/5/5/5
3	STR	B	402	-	-	0/4/62/62	0/4/4/4
3	STR	A	402	-	-	0/4/62/62	0/4/4/4

*Continued on next page...*

Continued from previous page...

Mol	Type	Chain	Res	Link	Chirals	Torsions	Rings
2	NAP	A	401	-	-	5/31/67/67	0/5/5/5

All (32) bond length outliers are listed below:

Mol	Chain	Res	Type	Atoms	Z	Observed(Å)	Ideal(Å)
2	A	401	NAP	O7N-C7N	-4.50	1.15	1.24
2	B	401	NAP	O7N-C7N	-3.97	1.16	1.24
2	A	401	NAP	PA-O2A	-3.89	1.37	1.55
2	B	401	NAP	P2B-O2X	-3.83	1.40	1.54
2	B	401	NAP	PN-O1N	-3.79	1.37	1.50
2	B	401	NAP	PA-O2A	-3.79	1.37	1.55
2	A	401	NAP	P2B-O2X	-3.71	1.40	1.54
2	A	401	NAP	PN-O2N	-3.56	1.38	1.55
2	A	401	NAP	C5A-N7A	-3.34	1.27	1.39
2	B	401	NAP	C2N-N1N	-3.27	1.31	1.35
3	A	402	STR	C13-C14	-3.19	1.48	1.55
2	A	401	NAP	O4B-C4B	-3.18	1.37	1.45
2	A	401	NAP	P2B-O3X	-3.11	1.42	1.54
2	B	401	NAP	PN-O2N	-3.07	1.40	1.55
2	A	401	NAP	PN-O1N	-3.03	1.40	1.50
2	B	401	NAP	P2B-O3X	-2.95	1.43	1.54
3	A	402	STR	C13-C17	-2.93	1.51	1.56
3	B	402	STR	C13-C14	-2.92	1.49	1.55
2	B	401	NAP	O4B-C4B	-2.84	1.38	1.45
3	B	402	STR	C17-C20	-2.63	1.48	1.51
4	A	403	SO4	O2-S	-2.57	1.32	1.46
3	B	402	STR	C4-C5	-2.56	1.30	1.34
2	B	401	NAP	C8A-N7A	-2.56	1.30	1.34
3	B	402	STR	C19-C10	-2.48	1.50	1.54
2	B	401	NAP	O5B-C5B	-2.48	1.35	1.44
2	A	401	NAP	C8A-N7A	-2.47	1.30	1.34
3	B	402	STR	C13-C17	-2.38	1.52	1.56
3	B	402	STR	C8-C14	-2.29	1.49	1.53
2	B	401	NAP	C5A-N7A	-2.28	1.31	1.39
2	A	401	NAP	P2B-O1X	-2.28	1.43	1.50
2	B	401	NAP	PA-O1A	-2.13	1.43	1.50
3	B	402	STR	C10-C9	-2.09	1.52	1.56

All (55) bond angle outliers are listed below:

Mol	Chain	Res	Type	Atoms	Z	Observed(°)	Ideal(°)
2	B	401	NAP	C6N-N1N-C2N	-8.45	114.27	121.97

Continued on next page...

*Continued from previous page...*

Mol	Chain	Res	Type	Atoms	Z	Observed(°)	Ideal(°)
2	A	401	NAP	C6N-N1N-C2N	-7.60	115.04	121.97
2	B	401	NAP	O7N-C7N-C3N	-6.72	111.58	119.63
2	A	401	NAP	C3N-C2N-N1N	5.63	125.93	120.43
3	B	402	STR	C6-C5-C4	-5.15	112.25	120.87
2	A	401	NAP	O7N-C7N-C3N	-4.99	113.66	119.63
3	A	402	STR	C7-C8-C9	4.72	116.34	110.49
2	A	401	NAP	O7N-C7N-N7N	4.50	128.97	122.58
3	B	402	STR	C6-C5-C10	4.47	125.01	116.77
2	B	401	NAP	C5N-C6N-N1N	4.31	126.58	120.40
2	B	401	NAP	C2N-C3N-C4N	4.03	122.83	118.26
2	B	401	NAP	C5N-C4N-C3N	-3.95	115.67	120.34
2	A	401	NAP	C5N-C4N-C3N	-3.93	115.69	120.34
2	B	401	NAP	O7N-C7N-N7N	3.72	127.86	122.58
3	B	402	STR	C11-C12-C13	-3.72	106.40	112.78
3	B	402	STR	C7-C8-C14	-3.69	105.77	112.08
2	A	401	NAP	O3B-C3B-C4B	-3.37	101.31	111.05
3	B	402	STR	C17-C13-C14	-3.36	96.14	99.72
2	A	401	NAP	C4A-C5A-N7A	-3.33	105.92	109.40
2	B	401	NAP	O3B-C3B-C4B	-3.30	101.50	111.05
2	B	401	NAP	C4N-C3N-C7N	-3.25	112.33	121.04
2	A	401	NAP	O2B-P2B-O1X	-3.15	97.24	109.39
2	A	401	NAP	O3X-P2B-O2X	3.05	119.30	107.64
3	A	402	STR	C11-C12-C13	-2.96	107.70	112.78
3	A	402	STR	C6-C5-C10	2.91	122.13	116.77
2	A	401	NAP	C5A-C6A-N1A	-2.81	113.98	120.35
3	A	402	STR	C19-C10-C1	2.71	113.72	109.43
2	A	401	NAP	N6A-C6A-N1A	2.67	124.13	118.57
2	A	401	NAP	C2D-C3D-C4D	-2.67	97.45	102.64
3	B	402	STR	C18-C13-C17	2.66	114.56	110.24
3	A	402	STR	C7-C8-C14	-2.64	107.57	112.08
3	B	402	STR	O20-C20-C21	2.64	125.83	121.15
2	B	401	NAP	C2A-N1A-C6A	2.62	123.24	118.75
2	A	401	NAP	O5D-C5D-C4D	2.60	117.94	108.99
3	B	402	STR	C19-C10-C9	-2.56	108.63	111.68
2	B	401	NAP	C3N-C2N-N1N	2.54	122.91	120.43
4	B	403	SO4	O4-S-O3	2.50	119.73	109.06
3	B	402	STR	O20-C20-C17	-2.49	117.83	121.69
2	B	401	NAP	O4D-C1D-C2D	-2.49	103.29	106.93
2	A	401	NAP	O3D-C3D-C4D	2.44	118.10	111.05
3	A	402	STR	C6-C5-C4	-2.41	116.83	120.87
2	B	401	NAP	O5B-C5B-C4B	2.40	117.27	108.99
2	B	401	NAP	O4D-C4D-C5D	2.37	117.16	109.37

*Continued on next page...*

Continued from previous page...

Mol	Chain	Res	Type	Atoms	Z	Observed(°)	Ideal(°)
2	A	401	NAP	C2A-N1A-C6A	2.33	122.74	118.75
2	B	401	NAP	C3N-C7N-N7N	2.33	120.55	117.75
2	B	401	NAP	O4B-C4B-C3B	2.33	109.72	105.11
2	A	401	NAP	O4B-C4B-C5B	2.24	116.74	109.37
2	B	401	NAP	O2N-PN-O1N	2.20	123.10	112.24
3	B	402	STR	C11-C9-C10	2.19	115.96	113.08
3	A	402	STR	C19-C10-C9	-2.17	109.09	111.68
3	A	402	STR	C12-C13-C14	2.17	110.63	107.27
3	A	402	STR	C16-C17-C20	-2.17	110.92	114.23
2	A	401	NAP	N3A-C2A-N1A	-2.14	125.34	128.68
2	A	401	NAP	O2N-PN-O1N	2.13	122.78	112.24
2	B	401	NAP	O4B-C4B-C5B	2.05	116.13	109.37

There are no chirality outliers.

All (10) torsion outliers are listed below:

Mol	Chain	Res	Type	Atoms
2	B	401	NAP	C5B-O5B-PA-O1A
2	A	401	NAP	C3B-C4B-C5B-O5B
2	B	401	NAP	C3B-C4B-C5B-O5B
2	A	401	NAP	C4D-C5D-O5D-PN
2	A	401	NAP	PA-O3-PN-O5D
2	B	401	NAP	PA-O3-PN-O5D
2	A	401	NAP	O4B-C4B-C5B-O5B
2	B	401	NAP	C4D-C5D-O5D-PN
2	B	401	NAP	O4B-C4B-C5B-O5B
2	A	401	NAP	C5B-O5B-PA-O1A

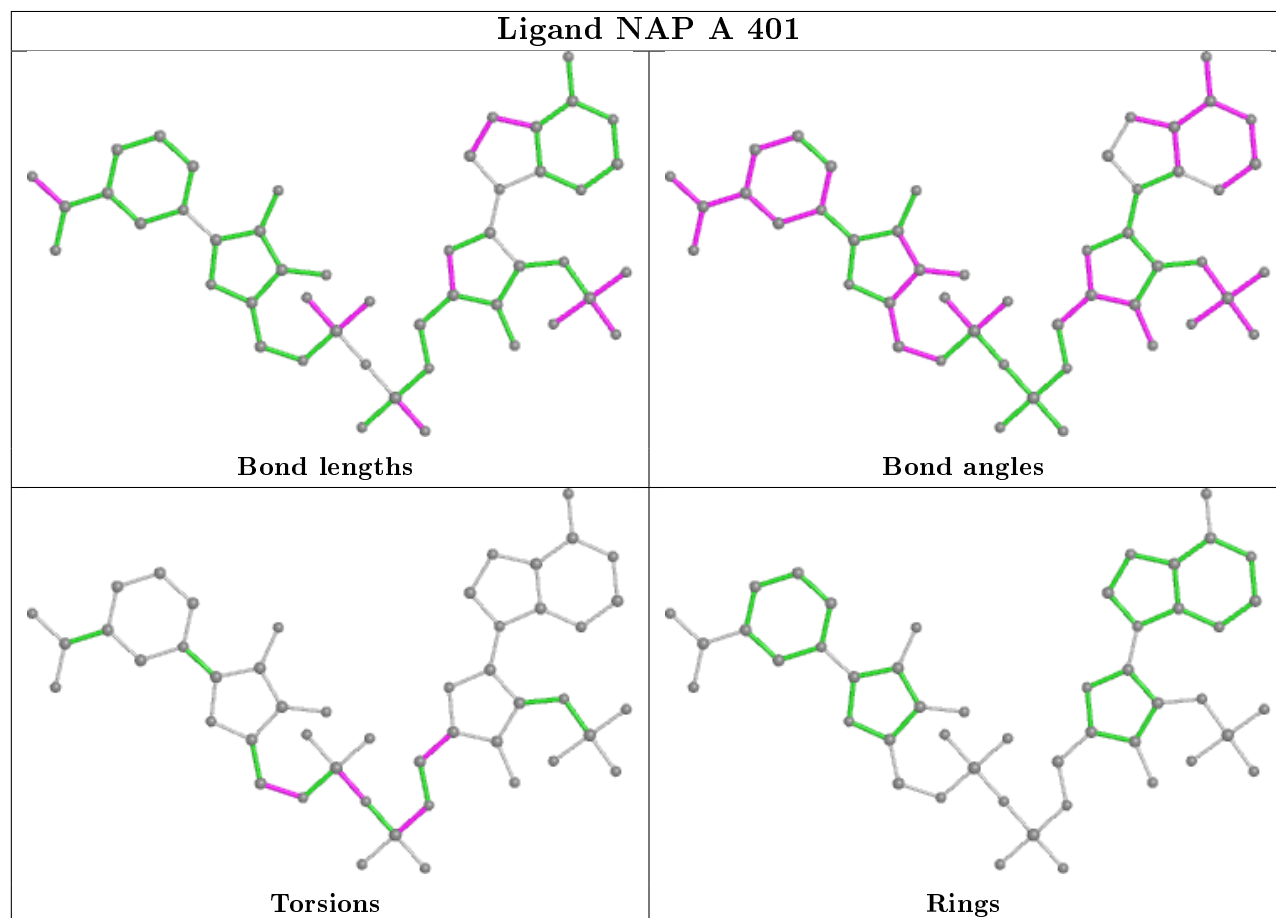
There are no ring outliers.

4 monomers are involved in 17 short contacts:

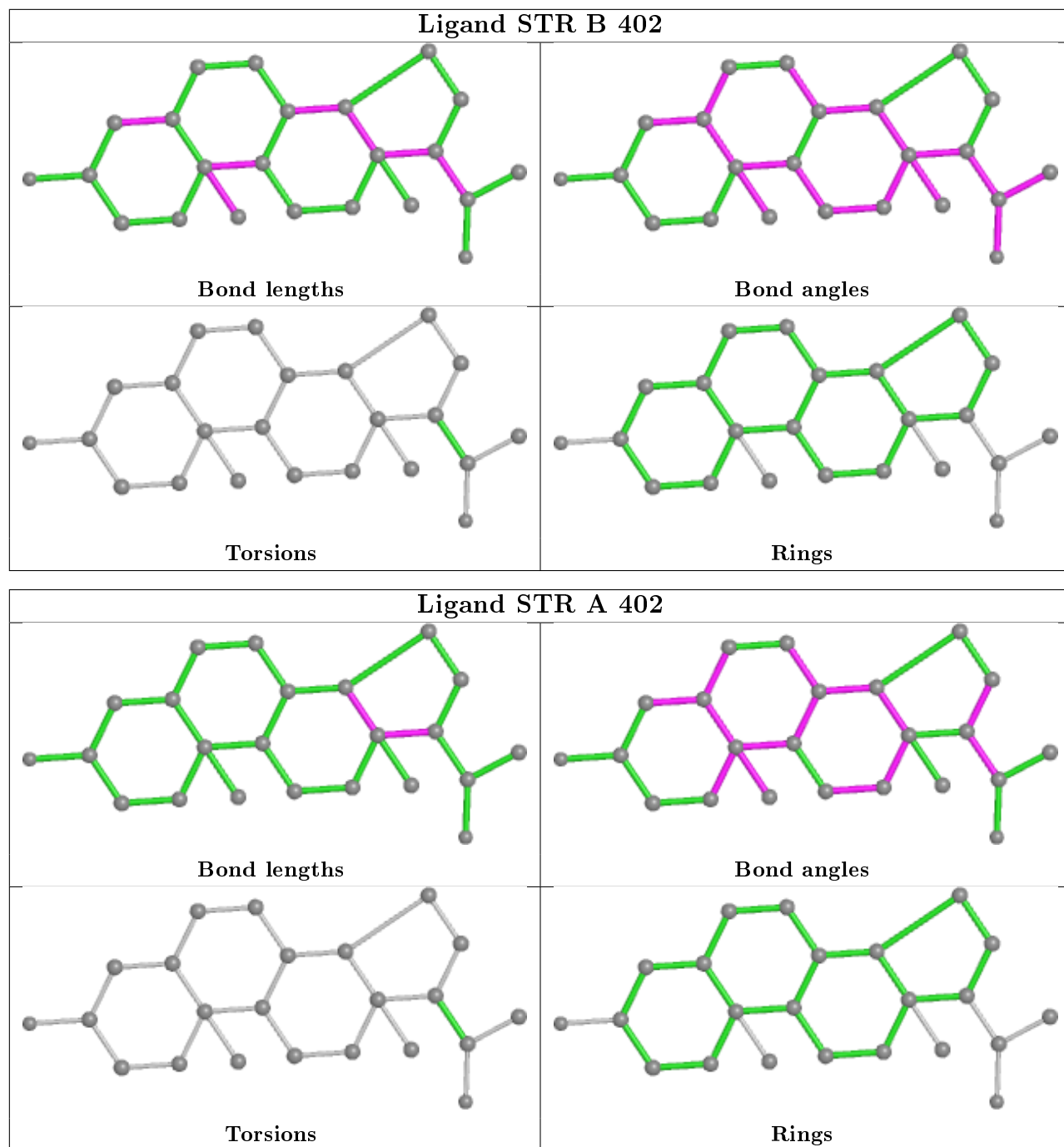
Mol	Chain	Res	Type	Clashes	Symm-Clashes
2	A	401	NAP	7	0
3	B	402	STR	3	0
3	A	402	STR	2	0
2	B	401	NAP	5	0

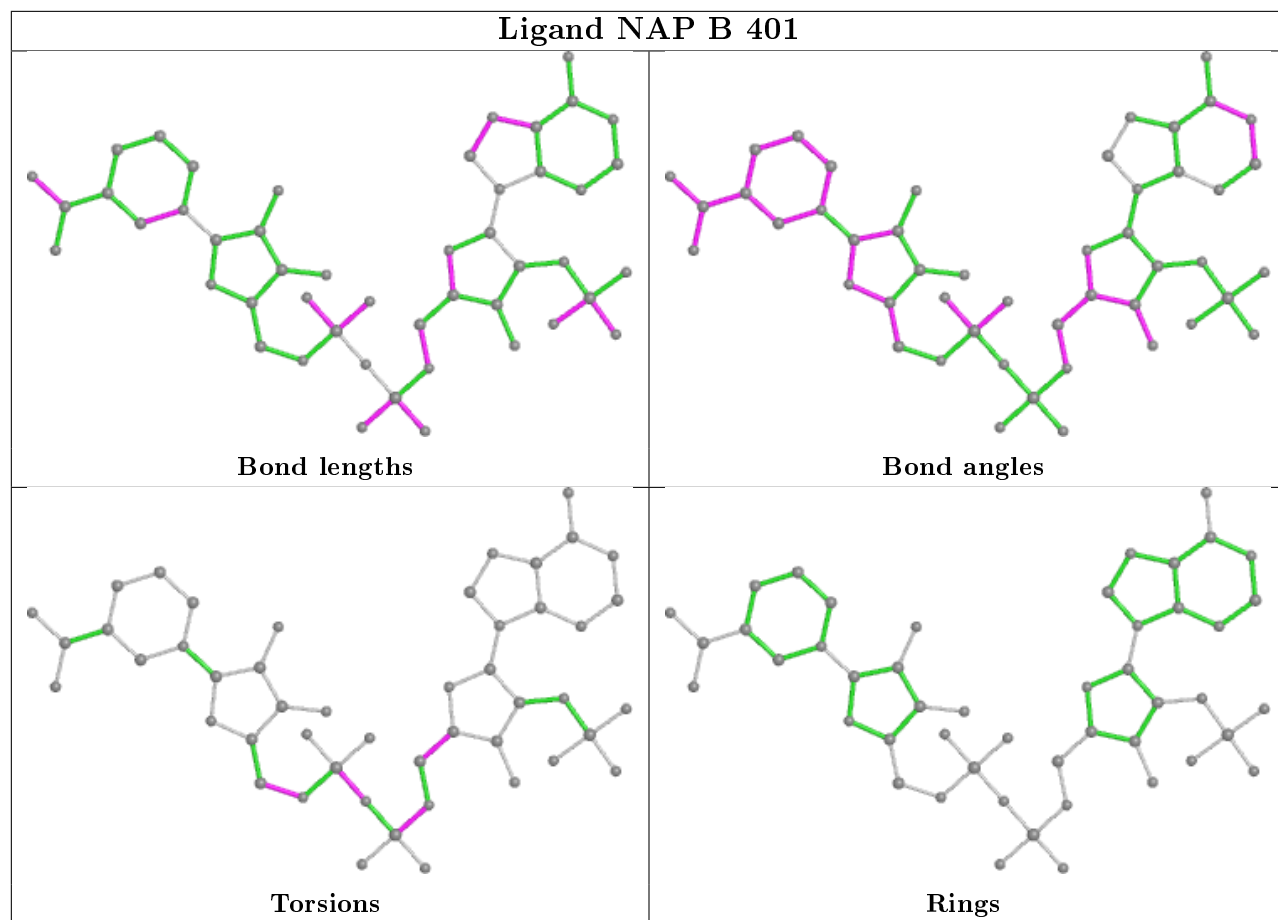
The following is a two-dimensional graphical depiction of Mogul quality analysis of bond lengths, bond angles, torsion angles, and ring geometry for all instances of the Ligand of Interest. In addition, ligands with molecular weight > 250 and outliers as shown on the validation Tables will also be included. For torsion angles, if less than 5% of the Mogul distribution of torsion angles is within 10 degrees of the torsion angle in question, then that torsion angle is considered an outlier.

Any bond that is central to one or more torsion angles identified as an outlier by Mogul will be highlighted in the graph. For rings, the root-mean-square deviation (RMSD) between the ring in question and similar rings identified by Mogul is calculated over all ring torsion angles. If the average RMSD is greater than 60 degrees and the minimal RMSD between the ring in question and any Mogul-identified rings is also greater than 60 degrees, then that ring is considered an outlier. The outliers are highlighted in purple. The color gray indicates Mogul did not find sufficient equivalents in the CSD to analyse the geometry.









## 5.7 Other polymers [\(i\)](#)

There are no such residues in this entry.

## 5.8 Polymer linkage issues [\(i\)](#)

There are no chain breaks in this entry.

## 6 Fit of model and data [i](#)

### 6.1 Protein, DNA and RNA chains [i](#)

In the following table, the column labelled ‘#RSRZ> 2’ contains the number (and percentage) of RSRZ outliers, followed by percent RSRZ outliers for the chain as percentile scores relative to all X-ray entries and entries of similar resolution. The OWAB column contains the minimum, median, 95<sup>th</sup> percentile and maximum values of the occupancy-weighted average B-factor per residue. The column labelled ‘Q< 0.9’ lists the number of (and percentage) of residues with an average occupancy less than 0.9.

Mol	Chain	Analysed	<RSRZ>	#RSRZ>2	OWAB(Å <sup>2</sup> )	Q<0.9
1	A	325/325 (100%)	-0.69	0 <b>100</b>   <b>100</b>	3, 7, 23, 46	0
1	B	325/325 (100%)	-0.51	5 (1%) 73   72	4, 10, 24, 66	0
All	All	650/650 (100%)	-0.60	5 (0%) <b>86</b>   <b>85</b>	3, 9, 24, 66	0

All (5) RSRZ outliers are listed below:

Mol	Chain	Res	Type	RSRZ
1	B	133	GLU	5.0
1	B	0	VAL	4.1
1	B	135	GLY	3.0
1	B	-1	SER	2.7
1	B	134	ASN	2.5

### 6.2 Non-standard residues in protein, DNA, RNA chains [i](#)

There are no non-standard protein/DNA/RNA residues in this entry.

### 6.3 Carbohydrates [i](#)

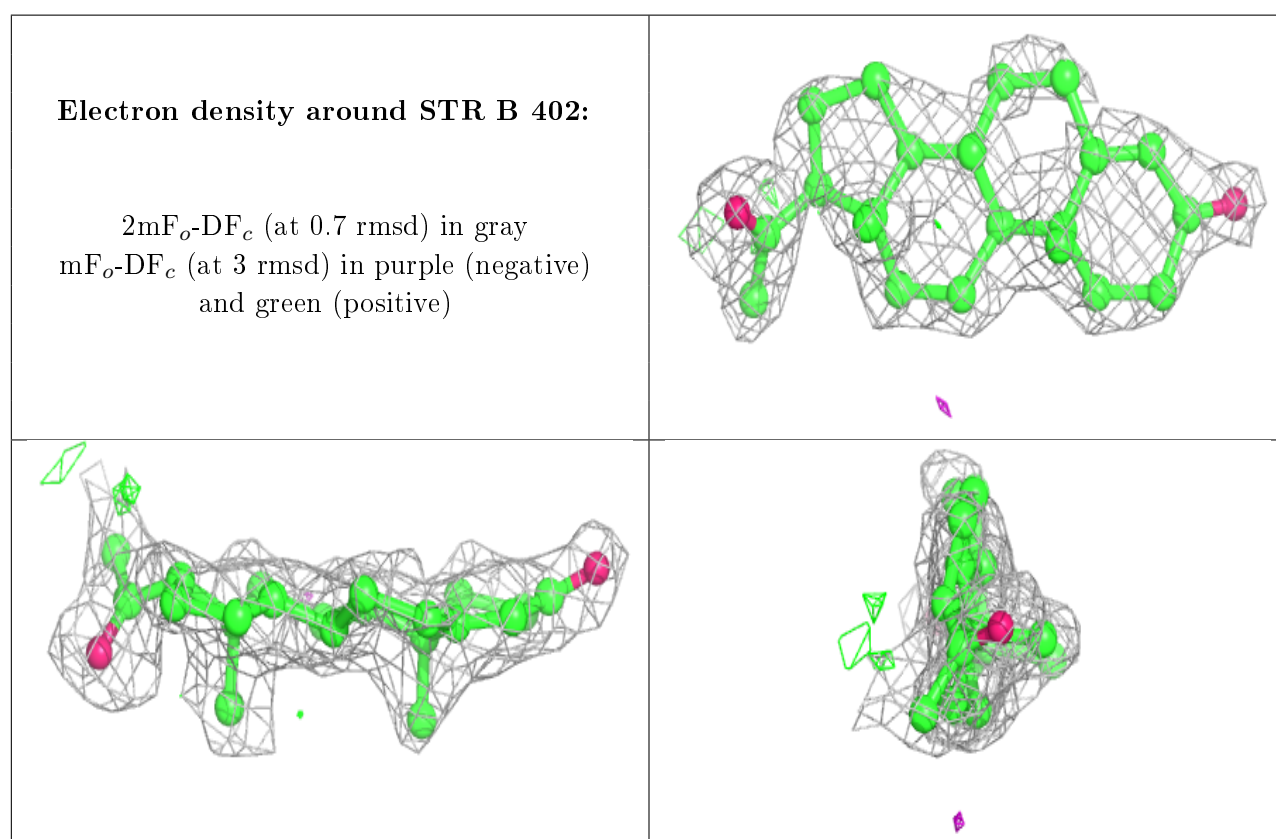
There are no carbohydrates in this entry.

### 6.4 Ligands [i](#)

In the following table, the Atoms column lists the number of modelled atoms in the group and the number defined in the chemical component dictionary. The B-factors column lists the minimum, median, 95<sup>th</sup> percentile and maximum values of B factors of atoms in the group. The column labelled ‘Q< 0.9’ lists the number of atoms with occupancy less than 0.9.

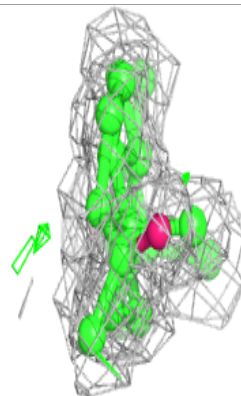
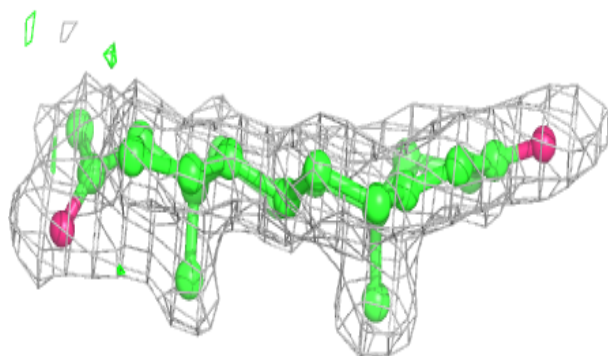
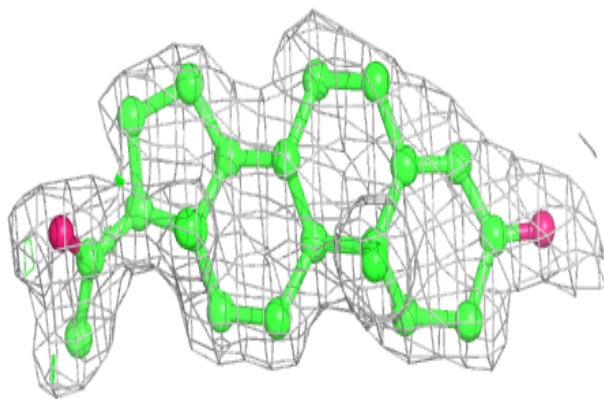
Mol	Type	Chain	Res	Atoms	RSCC	RSR	B-factors( $\text{\AA}^2$ )	Q<0.9
3	STR	B	402	23/23	0.84	0.16	24,27,30,31	23
3	STR	A	402	23/23	0.90	0.13	20,23,24,26	0
4	SO4	B	403	5/5	0.94	0.19	18,22,29,31	0
2	NAP	A	401	48/48	0.95	0.09	5,7,9,14	0
2	NAP	B	401	48/48	0.96	0.08	7,10,12,17	0
4	SO4	A	403	5/5	0.99	0.09	11,15,16,16	0

The following is a graphical depiction of the model fit to experimental electron density of all instances of the Ligand of Interest. In addition, ligands with molecular weight > 250 and outliers as shown on the geometry validation Tables will also be included. Each fit is shown from different orientation to approximate a three-dimensional view.

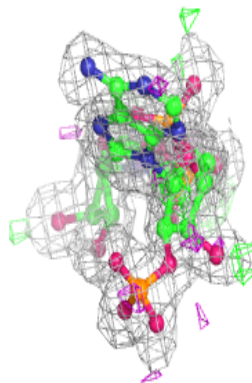
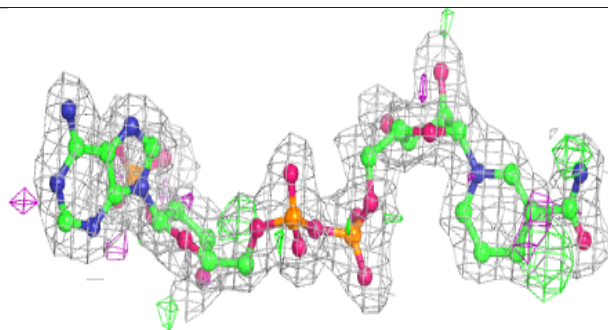
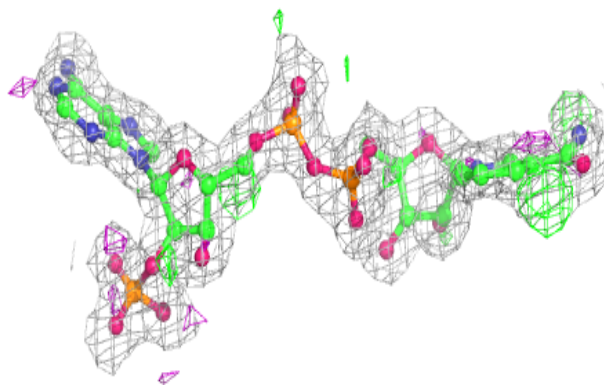


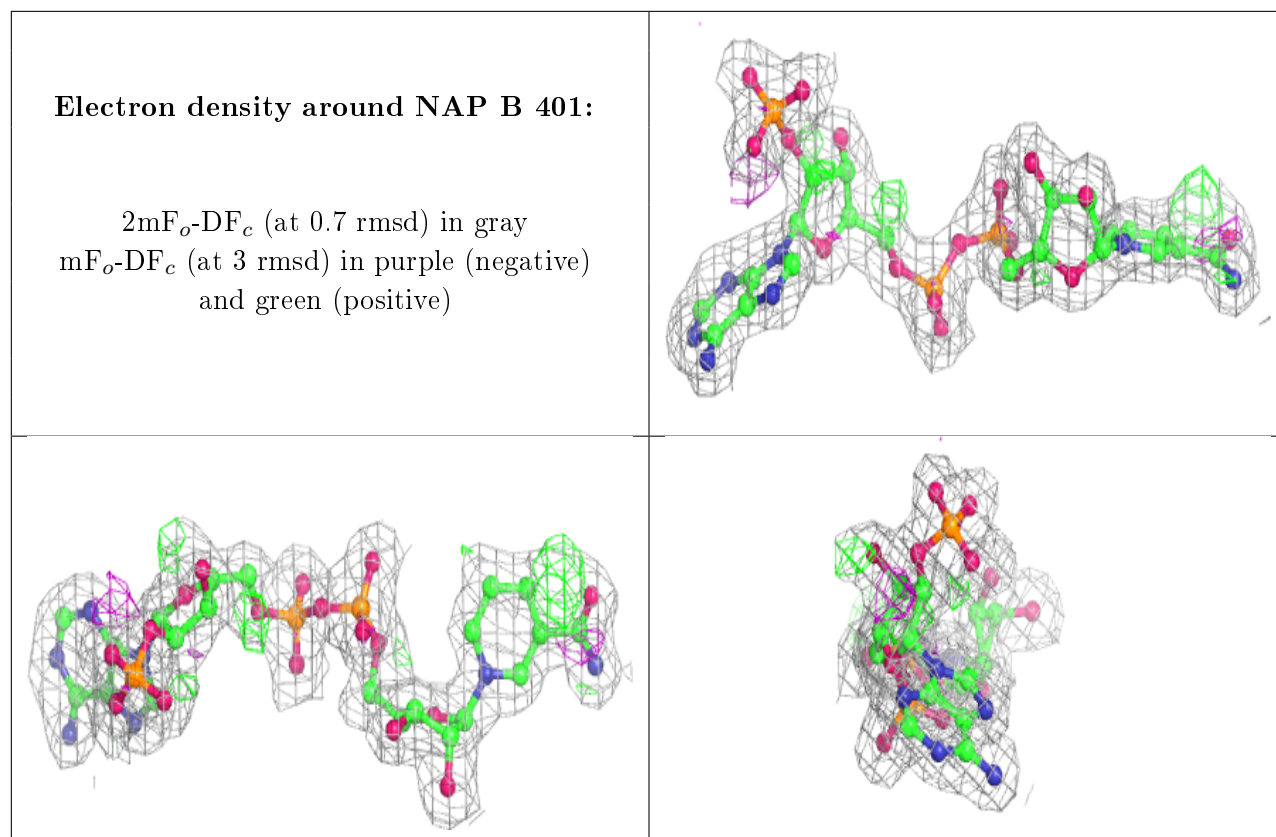
**Electron density around STR A 402:**

$2mF_o-DF_c$  (at 0.7 rmsd) in gray  
 $mF_o-DF_c$  (at 3 rmsd) in purple (negative)  
and green (positive)

**Electron density around NAP A 401:**

$2mF_o-DF_c$  (at 0.7 rmsd) in gray  
 $mF_o-DF_c$  (at 3 rmsd) in purple (negative)  
and green (positive)





## 6.5 Other polymers [i](#)

There are no such residues in this entry.