



Full wwPDB X-ray Structure Validation Report ⓘ

Sep 10, 2023 – 02:27 PM EDT

PDB ID : 4KWW
Title : The crystal structure of human quinolinic acid phosphoribosyltransferase in complex with its inhibitor phthalic acid
Authors : Malik, S.S.; Dimeka, P.N.; Ncube, Z.; Toth, E.A.
Deposited on : 2013-05-24
Resolution : 2.55 Å (reported)

This is a Full wwPDB X-ray Structure Validation Report for a publicly released PDB entry.

We welcome your comments at validation@mail.wwpdb.org

A user guide is available at

<https://www.wwpdb.org/validation/2017/XrayValidationReportHelp>

with specific help available everywhere you see the ⓘ symbol.

The types of validation reports are described at

<http://www.wwpdb.org/validation/2017/FAQs#types>.

The following versions of software and data (see [references ⓘ](#)) were used in the production of this report:

MolProbity : 4.02b-467
Mogul : 1.8.5 (274361), CSD as541be (2020)
Xtriage (Phenix) : 1.13
EDS : 2.35.1
Percentile statistics : 20191225.v01 (using entries in the PDB archive December 25th 2019)
Refmac : 5.8.0158
CCP4 : 7.0.044 (Gargrove)
Ideal geometry (proteins) : Engh & Huber (2001)
Ideal geometry (DNA, RNA) : Parkinson et al. (1996)
Validation Pipeline (wwPDB-VP) : 2.35.1

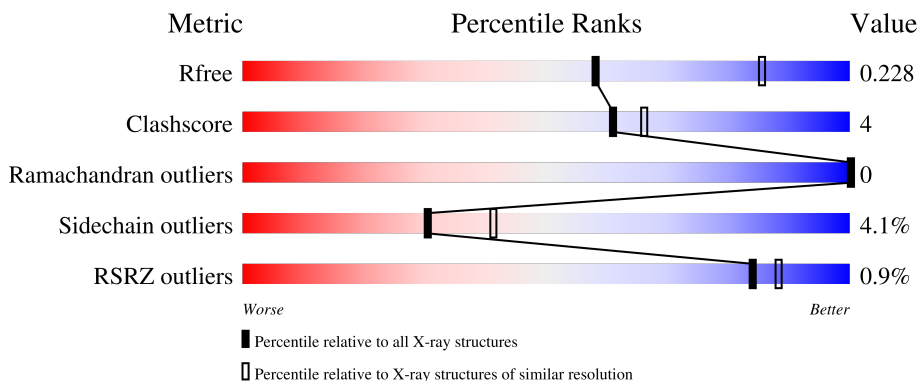
1 Overall quality at a glance

The following experimental techniques were used to determine the structure:

X-RAY DIFFRACTION

The reported resolution of this entry is 2.55 Å.

Percentile scores (ranging between 0-100) for global validation metrics of the entry are shown in the following graphic. The table shows the number of entries on which the scores are based.




Metric	Whole archive (#Entries)	Similar resolution (#Entries, resolution range(Å))
R_{free}	130704	1284 (2.56-2.52)
Clashscore	141614	1332 (2.56-2.52)
Ramachandran outliers	138981	1315 (2.56-2.52)
Sidechain outliers	138945	1315 (2.56-2.52)
RSRZ outliers	127900	1272 (2.56-2.52)

The table below summarises the geometric issues observed across the polymeric chains and their fit to the electron density. The red, orange, yellow and green segments of the lower bar indicate the fraction of residues that contain outliers for ≥ 3 , 2, 1 and 0 types of geometric quality criteria respectively. A grey segment represents the fraction of residues that are not modelled. The numeric value for each fraction is indicated below the corresponding segment, with a dot representing fractions $\leq 5\%$. The upper red bar (where present) indicates the fraction of residues that have poor fit to the electron density. The numeric value is given above the bar.

Mol	Chain	Length	Quality of chain
1	A	301	 84% 10% • 5%
1	B	301	 85% 9% 5%
1	C	301	 85% 9% • 5%
1	D	301	 86% 7% • 6%
1	E	301	 84% 10% • 6%

Continued on next page...

Continued from previous page...

Mol	Chain	Length	Quality of chain
1	F	301	 86% 8% 5%

2 Entry composition i

There are 3 unique types of molecules in this entry. The entry contains 12448 atoms, of which 0 are hydrogens and 0 are deuteriums.

In the tables below, the ZeroOcc column contains the number of atoms modelled with zero occupancy, the AltConf column contains the number of residues with at least one atom in alternate conformation and the Trace column contains the number of residues modelled with at most 2 atoms.

- Molecule 1 is a protein called Nicotinate-nucleotide pyrophosphorylase [carboxylating].

Mol	Chain	Residues	Atoms					ZeroOcc	AltConf	Trace
			Total	C	N	O	S			
1	A	285	Total 2039	C 1303	N 351	O 376	S 9	0	0	0
1	B	285	Total 2017	C 1291	N 345	O 372	S 9	0	0	0
1	C	285	Total 2038	C 1302	N 352	O 375	S 9	0	0	0
1	D	284	Total 2032	C 1300	N 349	O 374	S 9	0	0	0
1	E	284	Total 2042	C 1305	N 353	O 375	S 9	0	0	0
1	F	285	Total 2003	C 1282	N 343	O 369	S 9	0	0	0

There are 24 discrepancies between the modelled and reference sequences:

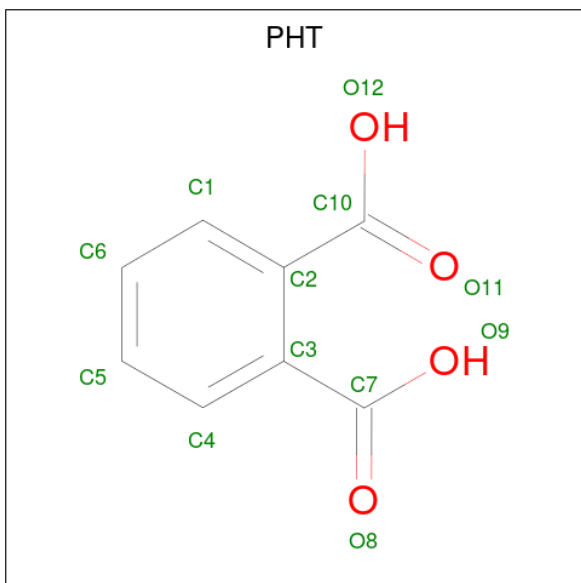
Chain	Residue	Modelled	Actual	Comment	Reference
A	-3	GLY	-	expression tag	UNP Q15274
A	-2	PRO	-	expression tag	UNP Q15274
A	-1	GLY	-	expression tag	UNP Q15274
A	0	SER	-	expression tag	UNP Q15274
B	-3	GLY	-	expression tag	UNP Q15274
B	-2	PRO	-	expression tag	UNP Q15274
B	-1	GLY	-	expression tag	UNP Q15274
B	0	SER	-	expression tag	UNP Q15274
C	-3	GLY	-	expression tag	UNP Q15274
C	-2	PRO	-	expression tag	UNP Q15274
C	-1	GLY	-	expression tag	UNP Q15274
C	0	SER	-	expression tag	UNP Q15274
D	-3	GLY	-	expression tag	UNP Q15274
D	-2	PRO	-	expression tag	UNP Q15274
D	-1	GLY	-	expression tag	UNP Q15274
D	0	SER	-	expression tag	UNP Q15274
E	-3	GLY	-	expression tag	UNP Q15274

Continued on next page...

Continued from previous page...

Chain	Residue	Modelled	Actual	Comment	Reference
E	-2	PRO	-	expression tag	UNP Q15274
E	-1	GLY	-	expression tag	UNP Q15274
E	0	SER	-	expression tag	UNP Q15274
F	-3	GLY	-	expression tag	UNP Q15274
F	-2	PRO	-	expression tag	UNP Q15274
F	-1	GLY	-	expression tag	UNP Q15274
F	0	SER	-	expression tag	UNP Q15274

- Molecule 2 is PHTHALIC ACID (three-letter code: PHT) (formula: C₈H₆O₄).



Mol	Chain	Residues	Atoms	ZeroOcc	AltConf
2	A	1	Total C O 12 8 4	0	0
2	B	1	Total C O 12 8 4	0	0
2	C	1	Total C O 12 8 4	0	0
2	D	1	Total C O 12 8 4	0	0
2	E	1	Total C O 12 8 4	0	0
2	F	1	Total C O 12 8 4	0	0

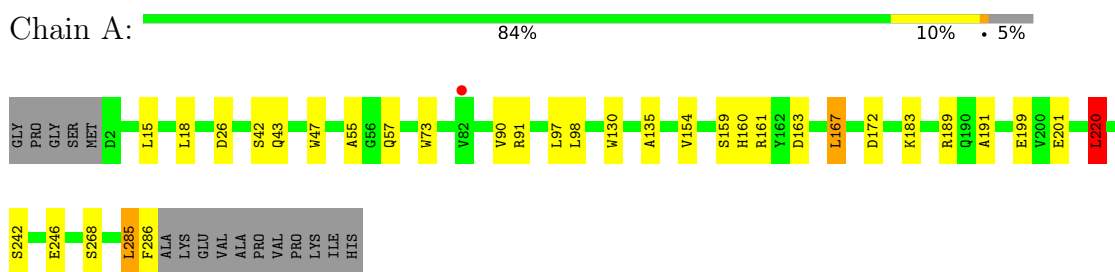
- Molecule 3 is water.

Mol	Chain	Residues	Atoms	ZeroOcc	AltConf
3	A	30	Total O 30 30	0	0
3	B	27	Total O 27 27	0	0
3	C	40	Total O 40 40	0	0
3	D	47	Total O 47 47	0	0
3	E	29	Total O 29 29	0	0
3	F	32	Total O 32 32	0	0

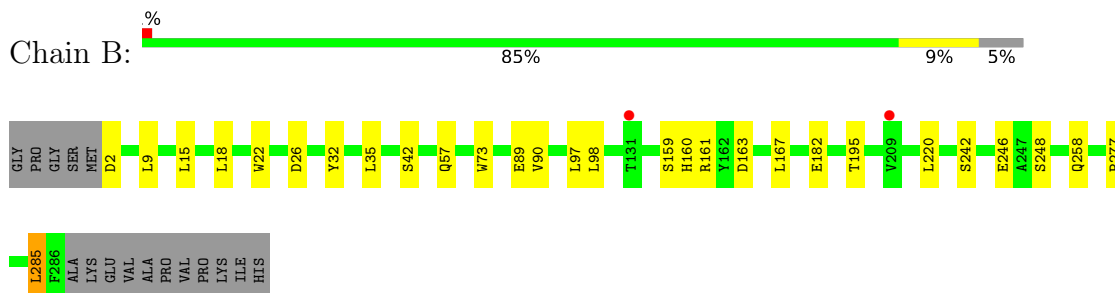
3 Residue-property plots [i](#)

These plots are drawn for all protein, RNA, DNA and oligosaccharide chains in the entry. The first graphic for a chain summarises the proportions of the various outlier classes displayed in the second graphic. The second graphic shows the sequence view annotated by issues in geometry and electron density. Residues are color-coded according to the number of geometric quality criteria for which they contain at least one outlier: green = 0, yellow = 1, orange = 2 and red = 3 or more. A red dot above a residue indicates a poor fit to the electron density ($RSRZ > 2$). Stretches of 2 or more consecutive residues without any outlier are shown as a green connector. Residues present in the sample, but not in the model, are shown in grey.

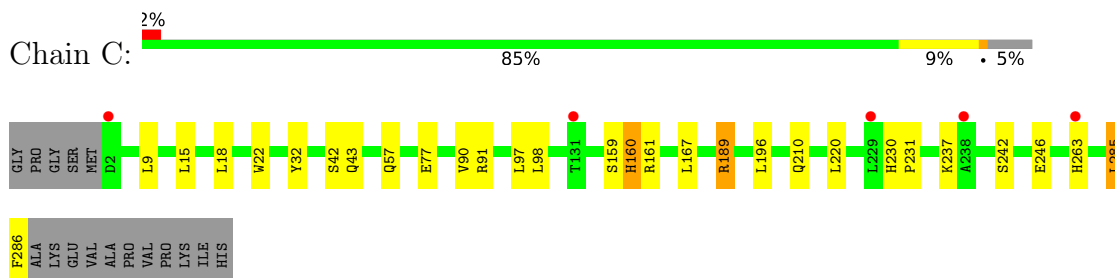
- Molecule 1: Nicotinate-nucleotide pyrophosphorylase [carboxylating]



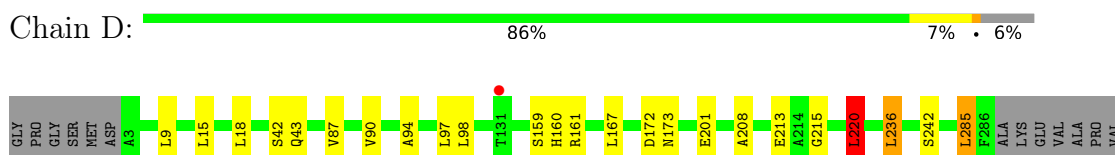
- Molecule 1: Nicotinate-nucleotide pyrophosphorylase [carboxylating]



- Molecule 1: Nicotinate-nucleotide pyrophosphorylase [carboxylating]



- Molecule 1: Nicotinate-nucleotide pyrophosphorylase [carboxylating]



PRO
LYS
ILE
HIS

- Molecule 1: Nicotinate-nucleotide pyrophosphorylase [carboxylating]

Chain E: 2% 84% 10% 6%

GLY PRO GLY MET ASP A3 L9 V13 T14 L15 L18 Y32 Q43 W47 V90 L97 A109 W130 T131 A135 S159 H160 R161 Y162 D163 L167 E182 R189 L220 E228 T234 V235 L236 S242 E246 A247 S248 Q258

F262 H263 I264 S268 A278 K284 L285 F286 ALA LYS GLU VAL ALA PRO VAL PRO LYS ILE HIS

- Molecule 1: Nicotinate-nucleotide pyrophosphorylase [carboxylating]

Chain F: 86% 8% 5%

GLY PRO GLY SER MET D2 P11 T14 L15 L18 D26 Y32 A39 S42 N68 W73 Y90 L97 L98 W130 A135 S159 H160 R161 L167 K197 L220 E246 A247 S248 S268 M271 L285 F286 ALA LYS GLU VAL ALA

PRO
VAL
PRO
LYS
ILE
HIS

4 Data and refinement statistics i

Property	Value	Source
Space group	P 32 2 1	Depositor
Cell constants a, b, c, α , β , γ	179.84Å 179.84Å 121.37Å 90.00° 90.00° 120.00°	Depositor
Resolution (Å)	155.74 – 2.55 47.87 – 2.55	Depositor EDS
% Data completeness (in resolution range)	99.7 (155.74-2.55) 99.7 (47.87-2.55)	Depositor EDS
R_{merge}	(Not available)	Depositor
R_{sym}	0.17	Depositor
$\langle I/\sigma(I) \rangle$ ¹	3.45 (at 2.54Å)	Xtrriage
Refinement program	REFMAC 5.6.0117	Depositor
R, R_{free}	0.195 , 0.231 0.193 , 0.228	Depositor DCC
R_{free} test set	3708 reflections (5.04%)	wwPDB-VP
Wilson B-factor (Å ²)	33.8	Xtrriage
Anisotropy	0.157	Xtrriage
Bulk solvent k_{sol} (e/Å ³), B_{sol} (Å ²)	0.34 , 28.6	EDS
L-test for twinning ²	$\langle L \rangle = 0.50$, $\langle L^2 \rangle = 0.34$	Xtrriage
Estimated twinning fraction	0.018 for -h,-k,l	Xtrriage
F_o, F_c correlation	0.94	EDS
Total number of atoms	12448	wwPDB-VP
Average B, all atoms (Å ²)	31.0	wwPDB-VP

Xtrriage's analysis on translational NCS is as follows: *The largest off-origin peak in the Patterson function is 2.75% of the height of the origin peak. No significant pseudotranslation is detected.*

¹Intensities estimated from amplitudes.

²Theoretical values of $\langle |L| \rangle$, $\langle L^2 \rangle$ for acentric reflections are 0.5, 0.333 respectively for untwinned datasets, and 0.375, 0.2 for perfectly twinned datasets.

5 Model quality [i](#)

5.1 Standard geometry [i](#)

Bond lengths and bond angles in the following residue types are not validated in this section: PHT

The Z score for a bond length (or angle) is the number of standard deviations the observed value is removed from the expected value. A bond length (or angle) with $|Z| > 5$ is considered an outlier worth inspection. RMSZ is the root-mean-square of all Z scores of the bond lengths (or angles).

Mol	Chain	Bond lengths		Bond angles	
		RMSZ	# Z >5	RMSZ	# Z >5
1	A	0.84	3/2081 (0.1%)	0.81	2/2846 (0.1%)
1	B	0.80	2/2060 (0.1%)	0.77	0/2820
1	C	0.82	1/2081 (0.0%)	0.79	0/2846
1	D	0.85	0/2075	0.85	2/2837 (0.1%)
1	E	0.82	2/2085 (0.1%)	0.78	0/2849
1	F	0.77	2/2045 (0.1%)	0.78	1/2802 (0.0%)
All	All	0.82	10/12427 (0.1%)	0.80	5/17000 (0.0%)

All (10) bond length outliers are listed below:

Mol	Chain	Res	Type	Atoms	Z	Observed(Å)	Ideal(Å)
1	A	172	ASP	CB-CG	5.78	1.63	1.51
1	A	47	TRP	CD2-CE2	5.65	1.48	1.41
1	B	89	GLU	CD-OE2	5.59	1.31	1.25
1	E	47	TRP	NE1-CE2	-5.58	1.30	1.37
1	B	22	TRP	CD2-CE2	5.20	1.47	1.41
1	E	130	TRP	CD2-CE2	5.18	1.47	1.41
1	F	130	TRP	CD2-CE2	5.17	1.47	1.41
1	C	22	TRP	CD2-CE2	5.15	1.47	1.41
1	F	73	TRP	CD2-CE2	5.12	1.47	1.41
1	A	130	TRP	CD2-CE2	5.07	1.47	1.41

All (5) bond angle outliers are listed below:

Mol	Chain	Res	Type	Atoms	Z	Observed(°)	Ideal(°)
1	A	220	LEU	CA-CB-CG	5.83	128.71	115.30
1	F	167	LEU	CB-CA-C	5.74	121.10	110.20
1	D	220	LEU	CA-CB-CG	5.56	128.10	115.30
1	D	220	LEU	CB-CG-CD1	5.26	119.95	111.00
1	A	172	ASP	CB-CG-OD1	5.12	122.90	118.30

There are no chirality outliers.

There are no planarity outliers.

5.2 Too-close contacts

In the following table, the Non-H and H(model) columns list the number of non-hydrogen atoms and hydrogen atoms in the chain respectively. The H(added) column lists the number of hydrogen atoms added and optimized by MolProbity. The Clashes column lists the number of clashes within the asymmetric unit, whereas Symm-Clashes lists symmetry-related clashes.

Mol	Chain	Non-H	H(model)	H(added)	Clashes	Symm-Clashes
1	A	2039	0	2022	18	0
1	B	2017	0	1990	25	0
1	C	2038	0	2027	19	0
1	D	2032	0	2027	19	0
1	E	2042	0	2044	19	0
1	F	2003	0	1977	18	0
2	A	12	0	4	0	0
2	B	12	0	4	0	0
2	C	12	0	4	0	0
2	D	12	0	4	0	0
2	E	12	0	4	0	0
2	F	12	0	4	0	0
3	A	30	0	0	1	0
3	B	27	0	0	2	0
3	C	40	0	0	2	0
3	D	47	0	0	8	0
3	E	29	0	0	5	0
3	F	32	0	0	3	0
All	All	12448	0	12111	109	0

The all-atom clashscore is defined as the number of clashes found per 1000 atoms (including hydrogen atoms). The all-atom clashscore for this structure is 4.

All (109) close contacts within the same asymmetric unit are listed below, sorted by their clash magnitude.

Atom-1	Atom-2	Interatomic distance (Å)	Clash overlap (Å)
1:D:42:SER:HB2	3:D:441:HOH:O	1.37	1.23
1:E:258:GLN:HG2	3:E:425:HOH:O	1.38	1.22
1:B:220:LEU:CD1	1:B:246:GLU:HG2	1.77	1.14
1:D:87:VAL:HG22	3:D:431:HOH:O	1.45	1.13
1:E:264:ILE:HD13	1:E:264:ILE:N	1.69	1.06

Continued on next page...

Continued from previous page...

Atom-1	Atom-2	Interatomic distance (Å)	Clash overlap (Å)
1:B:220:LEU:HD13	1:B:246:GLU:CG	1.90	1.01
1:B:220:LEU:HD13	1:B:246:GLU:HG2	1.39	1.00
1:D:97:LEU:HD12	3:D:441:HOH:O	1.61	1.00
1:D:94:ALA:HA	3:D:441:HOH:O	1.76	0.86
1:A:183:LYS:CD	1:A:183:LYS:NZ	2.39	0.86
1:F:271:MET:HB3	3:F:428:HOH:O	1.80	0.82
1:E:263:HIS:C	1:E:264:ILE:HD13	1.99	0.80
1:D:160:HIS:HD2	1:D:161:ARG:H	1.32	0.77
1:D:160:HIS:CD2	1:D:161:ARG:H	2.04	0.75
1:E:264:ILE:N	1:E:264:ILE:CD1	2.43	0.74
1:B:160:HIS:HD2	1:B:161:ARG:H	1.36	0.74
1:D:201:GLU:HG2	1:D:220:LEU:HG	1.70	0.72
1:C:160:HIS:HD2	1:C:161:ARG:H	1.36	0.71
1:B:90:VAL:HG12	1:B:97:LEU:HD21	1.74	0.70
1:A:160:HIS:HD2	1:A:161:ARG:H	1.40	0.70
1:B:160:HIS:CD2	1:B:161:ARG:H	2.10	0.69
1:B:220:LEU:HD13	1:B:246:GLU:CD	2.12	0.69
1:C:160:HIS:CD2	1:C:161:ARG:H	2.09	0.69
1:F:160:HIS:HD2	1:F:161:ARG:H	1.39	0.68
1:D:242:SER:HB2	3:D:401:HOH:O	1.93	0.68
1:F:68:ASN:HB3	3:F:410:HOH:O	1.93	0.68
1:E:43:GLN:HG2	3:E:408:HOH:O	1.94	0.67
1:B:90:VAL:HG12	1:B:97:LEU:CD2	2.26	0.65
1:B:242:SER:HB2	3:B:406:HOH:O	1.96	0.65
1:E:160:HIS:HD2	1:E:161:ARG:H	1.43	0.65
1:A:160:HIS:CD2	1:A:161:ARG:H	2.15	0.65
1:D:172:ASP:OD1	1:D:173:ASN:N	2.30	0.65
1:F:160:HIS:CD2	1:F:161:ARG:H	2.14	0.64
1:D:90:VAL:HG12	1:D:97:LEU:HD21	1.80	0.64
1:E:160:HIS:CD2	1:E:161:ARG:H	2.15	0.63
1:C:43:GLN:HG2	3:C:404:HOH:O	1.98	0.62
1:C:230:HIS:N	1:C:231:PRO:CD	2.61	0.62
1:B:220:LEU:CD1	1:B:246:GLU:CG	2.57	0.61
1:D:87:VAL:CG2	3:D:431:HOH:O	2.21	0.61
1:F:220:LEU:HD12	1:F:246:GLU:CD	2.20	0.61
1:E:43:GLN:CG	3:E:408:HOH:O	2.48	0.58
1:D:9:LEU:CD2	1:F:32:TYR:HA	2.34	0.58
1:D:43:GLN:CD	3:D:405:HOH:O	2.41	0.58
1:D:215:GLY:HA3	3:D:404:HOH:O	2.05	0.57
1:B:277:PRO:HD2	3:B:426:HOH:O	2.04	0.56
1:C:220:LEU:HD12	1:C:246:GLU:CD	2.26	0.56

Continued on next page...

Continued from previous page...

Atom-1	Atom-2	Interatomic distance (Å)	Clash overlap (Å)
1:E:220:LEU:HD12	1:E:246:GLU:CD	2.25	0.56
1:D:208:ALA:HB1	1:D:236:LEU:HD21	1.89	0.55
1:C:189:ARG:NH2	1:C:196:LEU:O	2.35	0.54
1:C:210:GLN:HG2	3:C:437:HOH:O	2.07	0.54
1:F:98:LEU:HD21	1:F:285:LEU:HD12	1.90	0.53
1:E:90:VAL:HG12	1:E:97:LEU:CD2	2.38	0.53
1:B:98:LEU:HD21	1:B:285:LEU:HD12	1.90	0.53
1:A:191:ALA:HB1	1:B:35:LEU:HD12	1.91	0.52
1:D:98:LEU:HD21	1:D:285:LEU:HD12	1.91	0.52
1:B:9:LEU:CD2	1:E:32:TYR:HA	2.39	0.52
1:A:42:SER:HB3	1:A:285:LEU:HD21	1.92	0.51
1:B:32:TYR:HA	1:C:9:LEU:CD2	2.41	0.51
1:D:90:VAL:HG12	1:D:97:LEU:CD2	2.40	0.51
1:C:189:ARG:O	1:C:189:ARG:HD3	2.11	0.50
1:B:220:LEU:HD11	1:B:248:SER:HB2	1.93	0.50
1:C:32:TYR:HA	1:E:9:LEU:CD2	2.42	0.49
1:B:90:VAL:CG1	1:B:97:LEU:CD2	2.90	0.49
1:E:135:ALA:O	1:E:268:SER:HA	2.12	0.49
1:E:43:GLN:NE2	3:E:408:HOH:O	2.46	0.48
1:E:13:VAL:HB	3:E:416:HOH:O	2.12	0.48
1:A:201:GLU:HG3	1:A:220:LEU:HG	1.96	0.47
1:E:90:VAL:HG12	1:E:97:LEU:HD21	1.96	0.47
1:D:42:SER:HB3	1:D:285:LEU:HD21	1.95	0.47
1:F:90:VAL:HG12	1:F:97:LEU:HD21	1.95	0.47
1:C:90:VAL:HG12	1:C:97:LEU:CD2	2.45	0.46
1:C:57:GLN:HG3	1:C:77:GLU:OE1	2.15	0.46
1:C:286:PHE:C	1:C:286:PHE:CD1	2.89	0.46
1:F:90:VAL:HG12	1:F:97:LEU:CD2	2.46	0.46
1:F:220:LEU:HD21	1:F:248:SER:HB3	1.98	0.45
1:C:90:VAL:HG12	1:C:97:LEU:HD21	1.98	0.45
1:B:220:LEU:HD12	1:B:246:GLU:O	2.17	0.45
1:A:57:GLN:HG2	1:A:73:TRP:CZ2	2.52	0.45
1:E:109:ALA:HB1	1:E:278:ALA:HB1	2.00	0.45
1:A:163:ASP:HB2	1:B:26:ASP:O	2.17	0.44
1:C:98:LEU:HD21	1:C:285:LEU:HD12	1.99	0.44
1:F:286:PHE:C	1:F:286:PHE:CD1	2.90	0.44
1:A:55:ALA:HB2	1:A:154:VAL:HG11	2.00	0.44
1:A:90:VAL:HG12	1:A:97:LEU:CD2	2.48	0.43
1:C:43:GLN:HG3	1:C:91:ARG:HG2	1.99	0.43
1:F:42:SER:HB3	1:F:285:LEU:HD21	2.00	0.43
1:F:271:MET:CB	3:F:428:HOH:O	2.51	0.43

Continued on next page...

Continued from previous page...

Atom-1	Atom-2	Interatomic distance (Å)	Clash overlap (Å)
1:A:199:GLU:OE2	1:A:246:GLU:OE1	2.36	0.43
1:C:42:SER:HB3	1:C:285:LEU:HD21	2.00	0.43
1:B:160:HIS:HE1	1:B:246:GLU:OE1	2.01	0.43
1:B:220:LEU:HD12	1:B:246:GLU:HG2	1.85	0.43
1:A:242:SER:HB2	3:A:403:HOH:O	2.19	0.42
1:F:161:ARG:HD3	1:F:167:LEU:HD23	2.01	0.42
1:C:237:LYS:HG3	1:C:263:HIS:HB3	2.02	0.42
1:F:135:ALA:O	1:F:268:SER:HA	2.20	0.42
1:A:161:ARG:HD3	1:A:167:LEU:HD23	2.02	0.42
1:D:90:VAL:CG1	1:D:97:LEU:CD2	2.98	0.42
1:A:286:PHE:CD1	1:A:286:PHE:C	2.93	0.42
1:E:220:LEU:HD21	1:E:248:SER:HB3	2.02	0.41
1:E:163:ASP:HB2	1:F:26:ASP:O	2.21	0.41
1:A:98:LEU:HD21	1:A:285:LEU:HD12	2.02	0.41
1:A:43:GLN:HG3	1:A:91:ARG:HG2	2.03	0.41
1:B:42:SER:HB3	1:B:285:LEU:HD21	2.01	0.41
1:C:230:HIS:N	1:C:231:PRO:HD2	2.35	0.41
1:A:26:ASP:O	1:B:163:ASP:HB2	2.21	0.41
1:B:195:THR:O	1:F:197:LYS:HD2	2.20	0.41
1:F:11:PRO:HG2	1:F:14:THR:HB	2.03	0.41
1:B:57:GLN:HG2	1:B:73:TRP:CZ2	2.57	0.40
1:A:135:ALA:O	1:A:268:SER:HA	2.21	0.40

There are no symmetry-related clashes.

5.3 Torsion angles [i](#)

5.3.1 Protein backbone [i](#)

In the following table, the Percentiles column shows the percent Ramachandran outliers of the chain as a percentile score with respect to all X-ray entries followed by that with respect to entries of similar resolution.

The Analysed column shows the number of residues for which the backbone conformation was analysed, and the total number of residues.

Mol	Chain	Analysed	Favoured	Allowed	Outliers	Percentiles	
1	A	283/301 (94%)	282 (100%)	1 (0%)	0	100	100
1	B	283/301 (94%)	281 (99%)	2 (1%)	0	100	100
1	C	283/301 (94%)	281 (99%)	2 (1%)	0	100	100

Continued on next page...

Continued from previous page...

Mol	Chain	Analysed	Favoured	Allowed	Outliers	Percentiles	
1	D	282/301 (94%)	278 (99%)	4 (1%)	0	100	100
1	E	282/301 (94%)	278 (99%)	4 (1%)	0	100	100
1	F	283/301 (94%)	280 (99%)	3 (1%)	0	100	100
All	All	1696/1806 (94%)	1680 (99%)	16 (1%)	0	100	100

There are no Ramachandran outliers to report.

5.3.2 Protein sidechains [i](#)

In the following table, the Percentiles column shows the percent sidechain outliers of the chain as a percentile score with respect to all X-ray entries followed by that with respect to entries of similar resolution.

The Analysed column shows the number of residues for which the sidechain conformation was analysed, and the total number of residues.

Mol	Chain	Analysed	Rotameric	Outliers	Percentiles	
1	A	199/222 (90%)	192 (96%)	7 (4%)	36	49
1	B	195/222 (88%)	187 (96%)	8 (4%)	30	41
1	C	200/222 (90%)	192 (96%)	8 (4%)	31	43
1	D	200/222 (90%)	192 (96%)	8 (4%)	31	43
1	E	202/222 (91%)	190 (94%)	12 (6%)	19	25
1	F	193/222 (87%)	187 (97%)	6 (3%)	40	54
All	All	1189/1332 (89%)	1140 (96%)	49 (4%)	30	41

All (49) residues with a non-rotameric sidechain are listed below:

Mol	Chain	Res	Type
1	A	15	LEU
1	A	18	LEU
1	A	159	SER
1	A	167	LEU
1	A	189	ARG
1	A	220	LEU
1	A	285	LEU
1	B	2	ASP
1	B	15	LEU
1	B	18	LEU

Continued on next page...

Continued from previous page...

Mol	Chain	Res	Type
1	B	159	SER
1	B	167	LEU
1	B	182	GLU
1	B	258	GLN
1	B	285	LEU
1	C	15	LEU
1	C	18	LEU
1	C	159	SER
1	C	160	HIS
1	C	167	LEU
1	C	189	ARG
1	C	242	SER
1	C	285	LEU
1	D	15	LEU
1	D	18	LEU
1	D	159	SER
1	D	167	LEU
1	D	213	GLU
1	D	220	LEU
1	D	236	LEU
1	D	285	LEU
1	E	15	LEU
1	E	18	LEU
1	E	159	SER
1	E	167	LEU
1	E	182	GLU
1	E	189	ARG
1	E	228	GLU
1	E	236	LEU
1	E	242	SER
1	E	264	ILE
1	E	284	LYS
1	E	285	LEU
1	F	2	ASP
1	F	15	LEU
1	F	18	LEU
1	F	159	SER
1	F	167	LEU
1	F	285	LEU

Sometimes sidechains can be flipped to improve hydrogen bonding and reduce clashes. All (15) such sidechains are listed below:

Mol	Chain	Res	Type
1	A	66	GLN
1	A	160	HIS
1	B	66	GLN
1	B	160	HIS
1	C	66	GLN
1	C	160	HIS
1	D	66	GLN
1	D	133	HIS
1	D	160	HIS
1	E	43	GLN
1	E	66	GLN
1	E	160	HIS
1	F	66	GLN
1	F	160	HIS
1	F	274	GLN

5.3.3 RNA [i](#)

There are no RNA molecules in this entry.

5.4 Non-standard residues in protein, DNA, RNA chains [i](#)

There are no non-standard protein/DNA/RNA residues in this entry.

5.5 Carbohydrates [i](#)

There are no monosaccharides in this entry.

5.6 Ligand geometry [i](#)

6 ligands are modelled in this entry.

In the following table, the Counts columns list the number of bonds (or angles) for which Mogul statistics could be retrieved, the number of bonds (or angles) that are observed in the model and the number of bonds (or angles) that are defined in the Chemical Component Dictionary. The Link column lists molecule types, if any, to which the group is linked. The Z score for a bond length (or angle) is the number of standard deviations the observed value is removed from the expected value. A bond length (or angle) with $|Z| > 2$ is considered an outlier worth inspection. RMSZ is the root-mean-square of all Z scores of the bond lengths (or angles).

Mol	Type	Chain	Res	Link	Bond lengths			Bond angles		
					Counts	RMSZ	# Z > 2	Counts	RMSZ	# Z > 2
2	PHT	D	300	-	12,12,12	2.02	1 (8%)	16,16,16	0.91	0
2	PHT	C	300	-	12,12,12	1.85	1 (8%)	16,16,16	1.01	0
2	PHT	F	300	-	12,12,12	2.03	1 (8%)	16,16,16	1.12	1 (6%)
2	PHT	B	300	-	12,12,12	2.09	1 (8%)	16,16,16	0.90	0
2	PHT	A	300	-	12,12,12	2.12	2 (16%)	16,16,16	1.22	2 (12%)
2	PHT	E	300	-	12,12,12	1.96	1 (8%)	16,16,16	1.13	2 (12%)

In the following table, the Chirals column lists the number of chiral outliers, the number of chiral centers analysed, the number of these observed in the model and the number defined in the Chemical Component Dictionary. Similar counts are reported in the Torsion and Rings columns. '-' means no outliers of that kind were identified.

Mol	Type	Chain	Res	Link	Chirals	Torsions	Rings
2	PHT	D	300	-	-	2/8/8/8	0/1/1/1
2	PHT	C	300	-	-	2/8/8/8	0/1/1/1
2	PHT	F	300	-	-	3/8/8/8	0/1/1/1
2	PHT	B	300	-	-	2/8/8/8	0/1/1/1
2	PHT	A	300	-	-	4/8/8/8	0/1/1/1
2	PHT	E	300	-	-	2/8/8/8	0/1/1/1

All (7) bond length outliers are listed below:

Mol	Chain	Res	Type	Atoms	Z	Observed(Å)	Ideal(Å)
2	B	300	PHT	C3-C2	6.28	1.51	1.40
2	E	300	PHT	C3-C2	6.03	1.50	1.40
2	D	300	PHT	C3-C2	6.03	1.50	1.40
2	A	300	PHT	C3-C2	5.79	1.50	1.40
2	F	300	PHT	C3-C2	5.79	1.50	1.40
2	C	300	PHT	C3-C2	5.33	1.49	1.40
2	A	300	PHT	C5-C4	2.21	1.43	1.38

All (5) bond angle outliers are listed below:

Mol	Chain	Res	Type	Atoms	Z	Observed(°)	Ideal(°)
2	F	300	PHT	C4-C3-C2	-2.92	116.02	119.26
2	A	300	PHT	C4-C3-C2	-2.66	116.30	119.26
2	E	300	PHT	O9-C7-C3	2.27	121.83	115.31
2	A	300	PHT	C1-C2-C3	2.20	121.70	119.26
2	E	300	PHT	C6-C5-C4	2.04	123.30	120.19

There are no chirality outliers.

All (15) torsion outliers are listed below:

Mol	Chain	Res	Type	Atoms
2	A	300	PHT	O11-C10-C2-C1
2	A	300	PHT	O12-C10-C2-C1
2	F	300	PHT	O12-C10-C2-C1
2	F	300	PHT	O11-C10-C2-C1
2	C	300	PHT	O11-C10-C2-C1
2	B	300	PHT	O12-C10-C2-C1
2	B	300	PHT	O11-C10-C2-C1
2	C	300	PHT	O12-C10-C2-C1
2	D	300	PHT	O12-C10-C2-C1
2	E	300	PHT	O12-C10-C2-C1
2	E	300	PHT	O11-C10-C2-C1
2	D	300	PHT	O11-C10-C2-C1
2	A	300	PHT	O11-C10-C2-C3
2	A	300	PHT	O12-C10-C2-C3
2	F	300	PHT	O12-C10-C2-C3

There are no ring outliers.

No monomer is involved in short contacts.

5.7 Other polymers [i](#)

There are no such residues in this entry.

5.8 Polymer linkage issues [i](#)

There are no chain breaks in this entry.

6 Fit of model and data

6.1 Protein, DNA and RNA chains

In the following table, the column labelled ‘#RSRZ > 2’ contains the number (and percentage) of RSRZ outliers, followed by percent RSRZ outliers for the chain as percentile scores relative to all X-ray entries and entries of similar resolution. The OWAB column contains the minimum, median, 95th percentile and maximum values of the occupancy-weighted average B-factor per residue. The column labelled ‘Q < 0.9’ lists the number of (and percentage) of residues with an average occupancy less than 0.9.

Mol	Chain	Analysed	<RSRZ>	#RSRZ>2	OWAB(Å ²)	Q<0.9
1	A	285/301 (94%)	-0.28	1 (0%) 92 96	17, 29, 45, 67	0
1	B	285/301 (94%)	-0.16	2 (0%) 87 90	18, 34, 61, 69	0
1	C	285/301 (94%)	-0.23	5 (1%) 68 74	15, 27, 46, 65	0
1	D	284/301 (94%)	-0.34	1 (0%) 92 96	15, 26, 41, 63	0
1	E	284/301 (94%)	-0.22	5 (1%) 68 74	18, 32, 52, 72	0
1	F	285/301 (94%)	-0.34	1 (0%) 92 96	18, 31, 44, 74	0
All	All	1708/1806 (94%)	-0.26	15 (0%) 84 88	15, 29, 51, 74	0

All (15) RSRZ outliers are listed below:

Mol	Chain	Res	Type	RSRZ
1	D	131	THR	2.9
1	C	2	ASP	2.8
1	C	238	ALA	2.7
1	C	263	HIS	2.6
1	E	262	PRO	2.6
1	B	209	VAL	2.5
1	C	131	THR	2.5
1	E	263	HIS	2.4
1	E	234	THR	2.3
1	F	39	ALA	2.2
1	E	228	GLU	2.1
1	C	229	LEU	2.1
1	A	82	VAL	2.0
1	B	131	THR	2.0
1	E	131	THR	2.0

6.2 Non-standard residues in protein, DNA, RNA chains [i](#)

There are no non-standard protein/DNA/RNA residues in this entry.

6.3 Carbohydrates [i](#)

There are no monosaccharides in this entry.

6.4 Ligands [i](#)

In the following table, the Atoms column lists the number of modelled atoms in the group and the number defined in the chemical component dictionary. The B-factors column lists the minimum, median, 95th percentile and maximum values of B factors of atoms in the group. The column labelled 'Q< 0.9' lists the number of atoms with occupancy less than 0.9.

Mol	Type	Chain	Res	Atoms	RSCC	RSR	B-factors(Å ²)	Q<0.9
2	PHT	B	300	12/12	0.96	0.15	33,38,41,44	0
2	PHT	A	300	12/12	0.97	0.12	26,28,31,33	0
2	PHT	C	300	12/12	0.97	0.14	22,24,28,29	0
2	PHT	E	300	12/12	0.97	0.13	27,31,36,36	0
2	PHT	F	300	12/12	0.97	0.12	29,32,39,41	0
2	PHT	D	300	12/12	0.98	0.12	27,29,33,34	0

6.5 Other polymers [i](#)

There are no such residues in this entry.