



# Full wwPDB X-ray Structure Validation Report ⓘ

Feb 19, 2024 – 09:23 AM EST

PDB ID : 4KNX  
Title : Hin GlmU Bound to WG176  
Authors : Doig, P.; Kazmirski, S.L.; Boriack-Sjodin, P.A.  
Deposited on : 2013-05-10  
Resolution : 1.90 Å(reported)

This is a Full wwPDB X-ray Structure Validation Report for a publicly released PDB entry.

We welcome your comments at [validation@mail.wwpdb.org](mailto:validation@mail.wwpdb.org)

A user guide is available at

<https://www.wwpdb.org/validation/2017/XrayValidationReportHelp>

with specific help available everywhere you see the ⓘ symbol.

The types of validation reports are described at

<http://www.wwpdb.org/validation/2017/FAQs#types>.

---

The following versions of software and data (see [references ⓘ](#)) were used in the production of this report:

MolProbity : 4.02b-467  
Mogul : 1.8.5 (274361), CSD as541be (2020)  
Xtriage (Phenix) : 1.13  
EDS : 2.36  
buster-report : 1.1.7 (2018)  
Percentile statistics : 20191225.v01 (using entries in the PDB archive December 25th 2019)  
Refmac : 5.8.0158  
CCP4 : 7.0.044 (Gargrove)  
Ideal geometry (proteins) : Engh & Huber (2001)  
Ideal geometry (DNA, RNA) : Parkinson et al. (1996)  
Validation Pipeline (wwPDB-VP) : 2.36

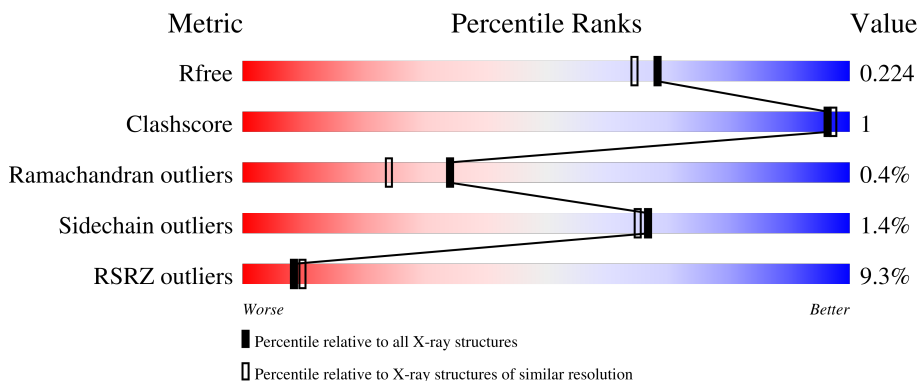
# 1 Overall quality at a glance

The following experimental techniques were used to determine the structure:

*X-RAY DIFFRACTION*


The reported resolution of this entry is 1.90 Å.

Percentile scores (ranging between 0-100) for global validation metrics of the entry are shown in the following graphic. The table shows the number of entries on which the scores are based.



Metric	Whole archive (#Entries)	Similar resolution (#Entries, resolution range(Å))
$R_{free}$	130704	6207 (1.90-1.90)
Clashscore	141614	6847 (1.90-1.90)
Ramachandran outliers	138981	6760 (1.90-1.90)
Sidechain outliers	138945	6760 (1.90-1.90)
RSRZ outliers	127900	6082 (1.90-1.90)

The table below summarises the geometric issues observed across the polymeric chains and their fit to the electron density. The red, orange, yellow and green segments of the lower bar indicate the fraction of residues that contain outliers for  $\geq 3$ , 2, 1 and 0 types of geometric quality criteria respectively. A grey segment represents the fraction of residues that are not modelled. The numeric value for each fraction is indicated below the corresponding segment, with a dot representing fractions  $\leq 5\%$ . The upper red bar (where present) indicates the fraction of residues that have poor fit to the electron density. The numeric value is given above the bar.

Mol	Chain	Length	Quality of chain
1	A	456	

## 2 Entry composition [i](#)

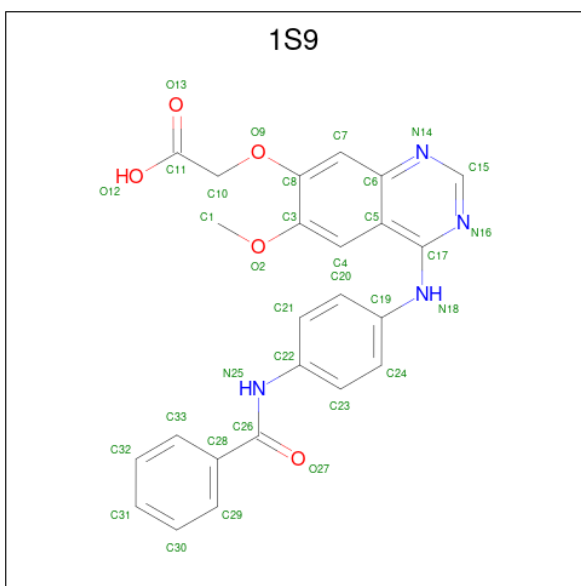
There are 6 unique types of molecules in this entry. The entry contains 4112 atoms, of which 0 are hydrogens and 0 are deuteriums.

In the tables below, the ZeroOcc column contains the number of atoms modelled with zero occupancy, the AltConf column contains the number of residues with at least one atom in alternate conformation and the Trace column contains the number of residues modelled with at most 2 atoms.

- Molecule 1 is a protein called Bifunctional protein GlmU.

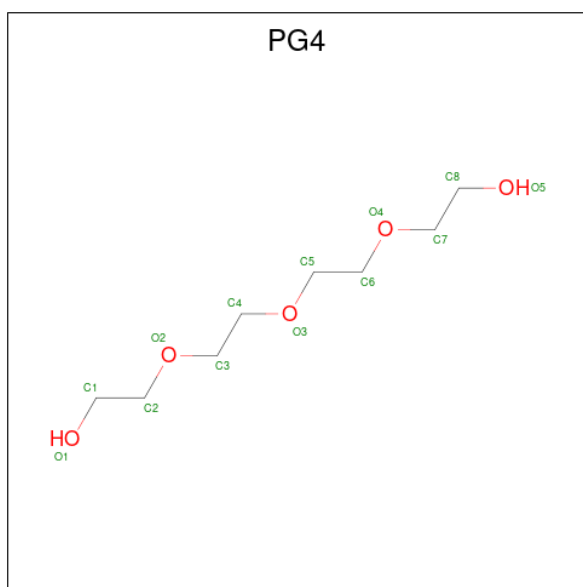
Mol	Chain	Residues	Atoms					ZeroOcc	AltConf	Trace
			Total	C	N	O	S			
1	A	450	3446	2166	605	664	11	3	9	0

- Molecule 2 is [(4-{[4-(benzoylamino)phenyl]amino}-6-methoxyquinazolin-7-yl)oxy]acetic acid (three-letter code: 1S9) (formula: C<sub>24</sub>H<sub>20</sub>N<sub>4</sub>O<sub>5</sub>).



Mol	Chain	Residues	Atoms				ZeroOcc	AltConf
			Total	C	N	O		
2	A	1	33	24	4	5	0	0

- Molecule 3 is TETRAETHYLENE GLYCOL (three-letter code: PG4) (formula: C<sub>8</sub>H<sub>18</sub>O<sub>5</sub>).

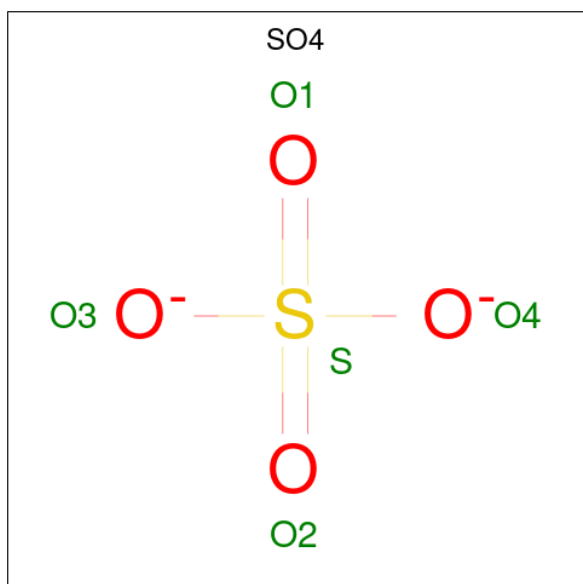


Mol	Chain	Residues	Atoms	ZeroOcc	AltConf
3	A	1	Total C O 13 8 5	0	0
3	A	1	Total C O 13 8 5	0	0

- Molecule 4 is MAGNESIUM ION (three-letter code: MG) (formula: Mg).

Mol	Chain	Residues	Atoms	ZeroOcc	AltConf
4	A	2	Total Mg 2 2	0	0

- Molecule 5 is SULFATE ION (three-letter code: SO4) (formula: O<sub>4</sub>S).



Mol	Chain	Residues	Atoms			ZeroOcc	AltConf
5	A	1	Total	O	S	0	0
			5	4	1		
5	A	1	Total	O	S	0	0
			5	4	1		
5	A	1	Total	O	S	0	0
			5	4	1		
5	A	1	Total	O	S	0	0
			5	4	1		

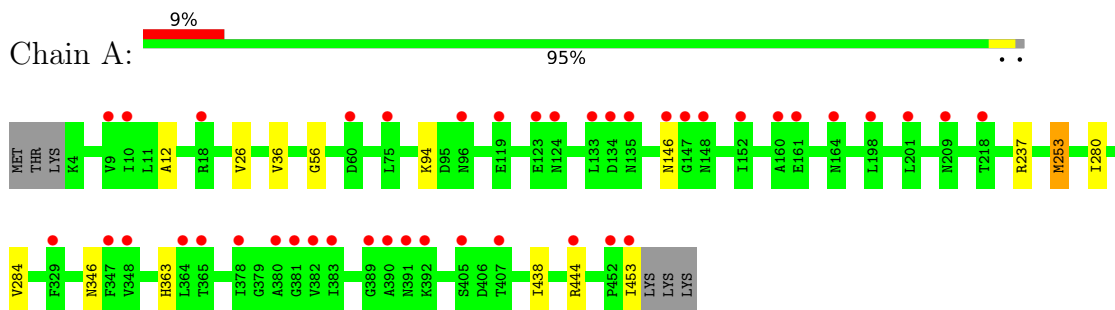
- Molecule 6 is water.

Mol	Chain	Residues	Atoms		ZeroOcc	AltConf
6	A	585	Total	O	0	0
			585	585		

### 3 Residue-property plots [i](#)

These plots are drawn for all protein, RNA, DNA and oligosaccharide chains in the entry. The first graphic for a chain summarises the proportions of the various outlier classes displayed in the second graphic. The second graphic shows the sequence view annotated by issues in geometry and electron density. Residues are color-coded according to the number of geometric quality criteria for which they contain at least one outlier: green = 0, yellow = 1, orange = 2 and red = 3 or more. A red dot above a residue indicates a poor fit to the electron density ( $RSRZ > 2$ ). Stretches of 2 or more consecutive residues without any outlier are shown as a green connector. Residues present in the sample, but not in the model, are shown in grey.

- Molecule 1: Bifunctional protein GlmU



## 4 Data and refinement statistics

Property	Value	Source
Space group	H 3 2	Depositor
Cell constants a, b, c, $\alpha$ , $\beta$ , $\gamma$	108.75Å 108.75Å 326.18Å 90.00° 90.00° 120.00°	Depositor
Resolution (Å)	40.79 – 1.90 38.44 – 1.90	Depositor EDS
% Data completeness (in resolution range)	99.8 (40.79-1.90) 99.8 (38.44-1.90)	Depositor EDS
$R_{merge}$	(Not available)	Depositor
$R_{sym}$	(Not available)	Depositor
$\langle I/\sigma(I) \rangle$ <sup>1</sup>	2.57 (at 1.89Å)	Xtrriage
Refinement program	REFMAC 5.5.0046	Depositor
R, $R_{free}$	0.205 , 0.217 0.210 , 0.224	Depositor DCC
$R_{free}$ test set	2977 reflections (5.07%)	wwPDB-VP
Wilson B-factor (Å <sup>2</sup> )	31.8	Xtrriage
Anisotropy	0.047	Xtrriage
Bulk solvent $k_{sol}$ (e/Å <sup>3</sup> ), $B_{sol}$ (Å <sup>2</sup> )	0.37 , 64.3	EDS
L-test for twinning <sup>2</sup>	$\langle  L  \rangle = 0.53$ , $\langle L^2 \rangle = 0.37$	Xtrriage
Estimated twinning fraction	No twinning to report.	Xtrriage
$F_o, F_c$ correlation	0.96	EDS
Total number of atoms	4112	wwPDB-VP
Average B, all atoms (Å <sup>2</sup> )	48.0	wwPDB-VP

Xtrriage's analysis on translational NCS is as follows: *The largest off-origin peak in the Patterson function is 6.85% of the height of the origin peak. No significant pseudotranslation is detected.*

<sup>1</sup>Intensities estimated from amplitudes.

<sup>2</sup>Theoretical values of  $\langle |L| \rangle$ ,  $\langle L^2 \rangle$  for acentric reflections are 0.5, 0.333 respectively for untwinned datasets, and 0.375, 0.2 for perfectly twinned datasets.

## 5 Model quality [i](#)

### 5.1 Standard geometry [i](#)

Bond lengths and bond angles in the following residue types are not validated in this section: MG, PG4, 1S9, SO4

The Z score for a bond length (or angle) is the number of standard deviations the observed value is removed from the expected value. A bond length (or angle) with  $|Z| > 5$  is considered an outlier worth inspection. RMSZ is the root-mean-square of all Z scores of the bond lengths (or angles).

Mol	Chain	Bond lengths		Bond angles	
		RMSZ	# Z  >5	RMSZ	# Z  >5
1	A	0.32	2/3516 (0.1%)	0.50	2/4768 (0.0%)

All (2) bond length outliers are listed below:

Mol	Chain	Res	Type	Atoms	Z	Observed(Å)	Ideal(Å)
1	A	253[A]	MET	CB-CG	6.04	1.70	1.51
1	A	253[B]	MET	CB-CG	6.04	1.70	1.51

All (2) bond angle outliers are listed below:

Mol	Chain	Res	Type	Atoms	Z	Observed(°)	Ideal(°)
1	A	253[A]	MET	CG-SD-CE	5.13	108.42	100.20
1	A	253[B]	MET	CG-SD-CE	5.13	108.42	100.20

There are no chirality outliers.

There are no planarity outliers.

### 5.2 Too-close contacts [i](#)

In the following table, the Non-H and H(model) columns list the number of non-hydrogen atoms and hydrogen atoms in the chain respectively. The H(added) column lists the number of hydrogen atoms added and optimized by MolProbity. The Clashes column lists the number of clashes within the asymmetric unit, whereas Symm-Clashes lists symmetry-related clashes.

Mol	Chain	Non-H	H(model)	H(added)	Clashes	Symm-Clashes
1	A	3446	0	3494	7	0
2	A	33	0	19	0	0
3	A	26	0	36	0	0
4	A	2	0	0	0	0

*Continued on next page...*



Continued from previous page...

Mol	Chain	Non-H	H(model)	H(added)	Clashes	Symm-Clashes
5	A	20	0	0	0	0
6	A	585	0	0	2	0
All	All	4112	0	3549	7	0

The all-atom clashscore is defined as the number of clashes found per 1000 atoms (including hydrogen atoms). The all-atom clashscore for this structure is 1.

All (7) close contacts within the same asymmetric unit are listed below, sorted by their clash magnitude.

Atom-1	Atom-2	Interatomic distance (Å)	Clash overlap (Å)
1:A:253[B]:MET:HA	1:A:253[B]:MET:HE3	1.87	0.57
1:A:253[B]:MET:HA	1:A:253[B]:MET:CE	2.40	0.51
1:A:237:ARG:HG2	6:A:647:HOH:O	2.18	0.43
1:A:280:ILE:HG23	1:A:284:VAL:HG21	2.02	0.42
1:A:26:VAL:HB	1:A:36:VAL:HB	2.02	0.41
1:A:12:ALA:HB1	1:A:26:VAL:HG21	2.03	0.41
1:A:453:ILE:HD11	6:A:775:HOH:O	2.19	0.41

There are no symmetry-related clashes.

## 5.3 Torsion angles [i](#)

### 5.3.1 Protein backbone [i](#)

In the following table, the Percentiles column shows the percent Ramachandran outliers of the chain as a percentile score with respect to all X-ray entries followed by that with respect to entries of similar resolution.

The Analysed column shows the number of residues for which the backbone conformation was analysed, and the total number of residues.

Mol	Chain	Analysed	Favoured	Allowed	Outliers	Percentiles
1	A	455/456 (100%)	447 (98%)	6 (1%)	2 (0%)	34 24

All (2) Ramachandran outliers are listed below:

Mol	Chain	Res	Type
1	A	146	ASN
1	A	56	GLY

### 5.3.2 Protein sidechains [i](#)

In the following table, the Percentiles column shows the percent sidechain outliers of the chain as a percentile score with respect to all X-ray entries followed by that with respect to entries of similar resolution.

The Analysed column shows the number of residues for which the sidechain conformation was analysed, and the total number of residues.

Mol	Chain	Analysed	Rotameric	Outliers	Percentiles
1	A	372/371 (100%)	367 (99%)	5 (1%)	69 68

All (5) residues with a non-rotameric sidechain are listed below:

Mol	Chain	Res	Type
1	A	94	LYS
1	A	346	ASN
1	A	363	HIS
1	A	438	ILE
1	A	444	ARG

Sometimes sidechains can be flipped to improve hydrogen bonding and reduce clashes. All (10) such sidechains are listed below:

Mol	Chain	Res	Type
1	A	70	GLN
1	A	72	ASN
1	A	96	ASN
1	A	132	ASN
1	A	146	ASN
1	A	148	ASN
1	A	211	GLN
1	A	363	HIS
1	A	443	GLN
1	A	445	HIS

### 5.3.3 RNA [i](#)

There are no RNA molecules in this entry.

## 5.4 Non-standard residues in protein, DNA, RNA chains [i](#)

There are no non-standard protein/DNA/RNA residues in this entry.

## 5.5 Carbohydrates [i](#)

There are no monosaccharides in this entry.

## 5.6 Ligand geometry [i](#)

Of 9 ligands modelled in this entry, 2 are monoatomic - leaving 7 for Mogul analysis.

In the following table, the Counts columns list the number of bonds (or angles) for which Mogul statistics could be retrieved, the number of bonds (or angles) that are observed in the model and the number of bonds (or angles) that are defined in the Chemical Component Dictionary. The Link column lists molecule types, if any, to which the group is linked. The Z score for a bond length (or angle) is the number of standard deviations the observed value is removed from the expected value. A bond length (or angle) with  $|Z| > 2$  is considered an outlier worth inspection. RMSZ is the root-mean-square of all Z scores of the bond lengths (or angles).

Mol	Type	Chain	Res	Link	Bond lengths			Bond angles		
					Counts	RMSZ	# Z  > 2	Counts	RMSZ	# Z  > 2
5	SO4	A	508	-	4,4,4	0.14	0	6,6,6	0.05	0
5	SO4	A	509	-	4,4,4	0.14	0	6,6,6	0.06	0
5	SO4	A	506	-	4,4,4	0.13	0	6,6,6	0.09	0
3	PG4	A	502	-	12,12,12	0.46	0	11,11,11	0.24	0
5	SO4	A	507	-	4,4,4	0.14	0	6,6,6	0.09	0
3	PG4	A	503	-	12,12,12	0.44	0	11,11,11	0.24	0
2	1S9	A	501	-	36,36,36	1.39	4 (11%)	49,49,49	1.86	12 (24%)

In the following table, the Chirals column lists the number of chiral outliers, the number of chiral centers analysed, the number of these observed in the model and the number defined in the Chemical Component Dictionary. Similar counts are reported in the Torsion and Rings columns. '-' means no outliers of that kind were identified.

Mol	Type	Chain	Res	Link	Chirals	Torsions	Rings
3	PG4	A	502	-	-	2/10/10/10	-
3	PG4	A	503	-	-	0/10/10/10	-
2	1S9	A	501	-	-	10/19/19/19	0/4/4/4

All (4) bond length outliers are listed below:

Mol	Chain	Res	Type	Atoms	Z	Observed(Å)	Ideal(Å)
2	A	501	1S9	C17-C5	-4.96	1.38	1.44
2	A	501	1S9	C17-N18	3.44	1.41	1.36
2	A	501	1S9	C7-C6	-2.41	1.38	1.41
2	A	501	1S9	C5-C6	-2.17	1.38	1.42

All (12) bond angle outliers are listed below:

Mol	Chain	Res	Type	Atoms	Z	Observed(°)	Ideal(°)
2	A	501	1S9	C1-O2-C3	-7.06	106.88	117.53
2	A	501	1S9	C10-O9-C8	-5.18	106.90	117.60
2	A	501	1S9	C4-C5-C17	-4.00	121.27	124.88
2	A	501	1S9	C17-C5-C6	3.36	118.00	115.88
2	A	501	1S9	O12-C11-O13	2.79	130.25	123.30
2	A	501	1S9	O2-C3-C4	-2.65	121.81	125.24
2	A	501	1S9	O9-C8-C7	-2.43	121.09	125.19
2	A	501	1S9	C22-N25-C26	-2.28	120.65	126.58
2	A	501	1S9	O2-C3-C8	2.21	118.48	115.41
2	A	501	1S9	O13-C11-C10	-2.14	114.41	122.44
2	A	501	1S9	C19-N18-C17	-2.13	122.72	128.26
2	A	501	1S9	C33-C28-C29	2.06	121.53	118.59

There are no chirality outliers.

All (12) torsion outliers are listed below:

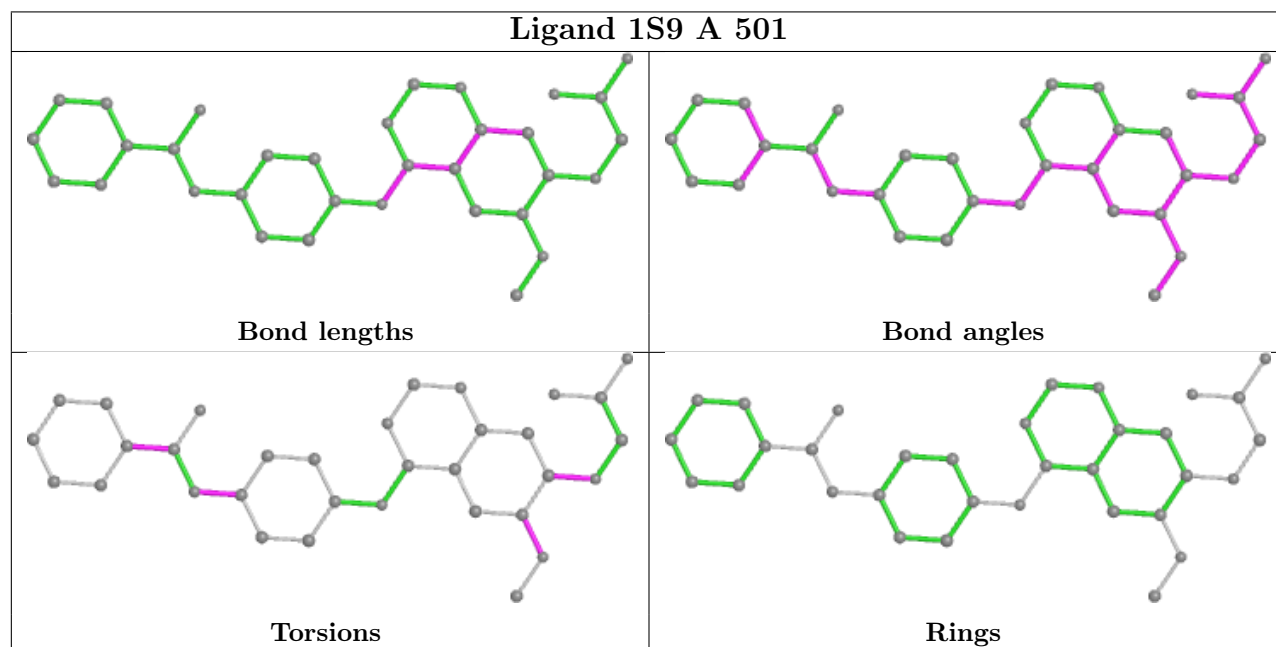
Mol	Chain	Res	Type	Atoms
2	A	501	1S9	C8-C3-O2-C1
2	A	501	1S9	C4-C3-O2-C1
2	A	501	1S9	C21-C22-N25-C26
3	A	502	PG4	O1-C1-C2-O2
2	A	501	1S9	C23-C22-N25-C26
2	A	501	1S9	N25-C26-C28-C29
2	A	501	1S9	O27-C26-C28-C29
2	A	501	1S9	N25-C26-C28-C33
2	A	501	1S9	O27-C26-C28-C33
2	A	501	1S9	C3-C8-O9-C10
3	A	502	PG4	O2-C3-C4-O3
2	A	501	1S9	C7-C8-O9-C10

There are no ring outliers.

No monomer is involved in short contacts.

The following is a two-dimensional graphical depiction of Mogul quality analysis of bond lengths, bond angles, torsion angles, and ring geometry for all instances of the Ligand of Interest. In addition, ligands with molecular weight > 250 and outliers as shown on the validation Tables will also be included. For torsion angles, if less than 5% of the Mogul distribution of torsion angles is within 10 degrees of the torsion angle in question, then that torsion angle is considered an outlier. Any bond that is central to one or more torsion angles identified as an outlier by Mogul will be highlighted in the graph. For rings, the root-mean-square deviation (RMSD) between the ring in question and similar rings identified by Mogul is calculated over all ring torsion angles. If the

average RMSD is greater than 60 degrees and the minimal RMSD between the ring in question and any Mogul-identified rings is also greater than 60 degrees, then that ring is considered an outlier. The outliers are highlighted in purple. The color gray indicates Mogul did not find sufficient equivalents in the CSD to analyse the geometry.



## 5.7 Other polymers [\(i\)](#)

There are no such residues in this entry.

## 5.8 Polymer linkage issues [\(i\)](#)

There are no chain breaks in this entry.

## 6 Fit of model and data

### 6.1 Protein, DNA and RNA chains

In the following table, the column labelled ‘#RSRZ> 2’ contains the number (and percentage) of RSRZ outliers, followed by percent RSRZ outliers for the chain as percentile scores relative to all X-ray entries and entries of similar resolution. The OWAB column contains the minimum, median, 95<sup>th</sup> percentile and maximum values of the occupancy-weighted average B-factor per residue. The column labelled ‘Q< 0.9’ lists the number of (and percentage) of residues with an average occupancy less than 0.9.

Mol	Chain	Analysed	<RSRZ>	#RSRZ>2	OWAB(Å <sup>2</sup> )	Q<0.9
1	A	450/456 (98%)	0.64	42 (9%) <b>8</b> <b>10</b>	33, 44, 60, 66	3 (0%)

All (42) RSRZ outliers are listed below:

Mol	Chain	Res	Type	RSRZ
1	A	147	GLY	9.9
1	A	146	ASN	7.3
1	A	148	ASN	6.4
1	A	453	ILE	6.3
1	A	390	ALA	4.9
1	A	364	LEU	4.9
1	A	134	ASP	4.7
1	A	452	PRO	4.3
1	A	218	THR	4.1
1	A	96	ASN	4.1
1	A	392	LYS	4.0
1	A	160	ALA	4.0
1	A	391	ASN	3.9
1	A	329	PHE	3.7
1	A	348	VAL	3.4
1	A	347	PHE	3.4
1	A	405[A]	SER	3.3
1	A	164	ASN	3.3
1	A	383	ILE	3.2
1	A	382	VAL	3.2
1	A	198	LEU	3.1
1	A	161	GLU	3.0
1	A	381	GLY	2.9
1	A	209	ASN	2.9
1	A	365	THR	2.9
1	A	123	GLU	2.9
1	A	60	ASP	2.9

*Continued on next page...*

*Continued from previous page...*

Mol	Chain	Res	Type	RSRZ
1	A	10	ILE	2.5
1	A	380	ALA	2.4
1	A	389	GLY	2.4
1	A	444	ARG	2.3
1	A	152	ILE	2.3
1	A	119	GLU	2.3
1	A	407	THR	2.2
1	A	133	LEU	2.1
1	A	75	LEU	2.1
1	A	9	VAL	2.1
1	A	135	ASN	2.1
1	A	124	ASN	2.0
1	A	201	LEU	2.0
1	A	378	ILE	2.0
1	A	18	ARG	2.0

## 6.2 Non-standard residues in protein, DNA, RNA chains [i](#)

There are no non-standard protein/DNA/RNA residues in this entry.

## 6.3 Carbohydrates [i](#)

There are no monosaccharides in this entry.

## 6.4 Ligands [i](#)

In the following table, the Atoms column lists the number of modelled atoms in the group and the number defined in the chemical component dictionary. The B-factors column lists the minimum, median, 95<sup>th</sup> percentile and maximum values of B factors of atoms in the group. The column labelled 'Q< 0.9' lists the number of atoms with occupancy less than 0.9.

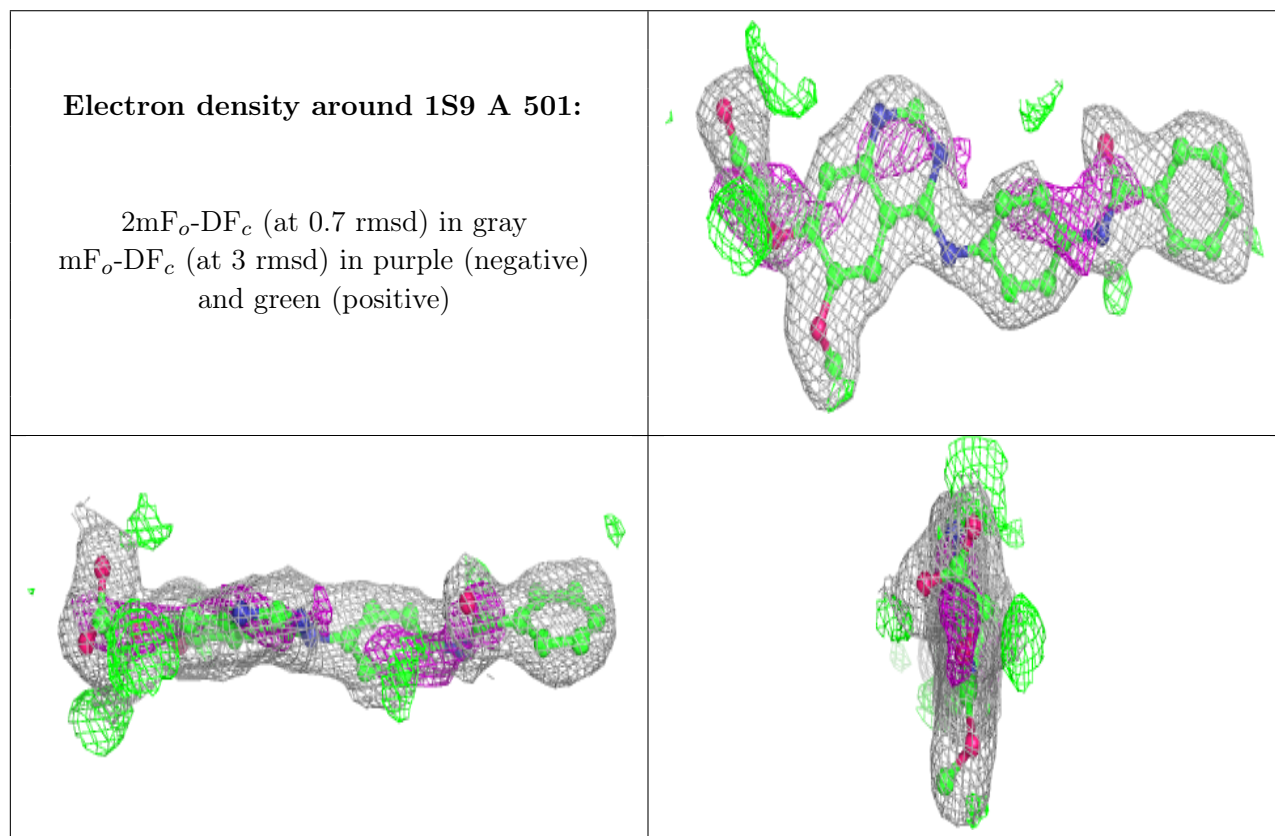
Mol	Type	Chain	Res	Atoms	RSCC	RSR	B-factors(Å <sup>2</sup> )	Q<0.9
2	1S9	A	501	33/33	0.82	0.17	54,55,57,57	0
4	MG	A	504	1/1	0.83	0.19	45,45,45,45	1
5	SO4	A	507	5/5	0.83	0.22	78,78,78,78	0
3	PG4	A	502	13/13	0.84	0.18	59,60,63,64	0
4	MG	A	505	1/1	0.86	0.10	44,44,44,44	1
3	PG4	A	503	13/13	0.90	0.12	56,56,59,60	0
5	SO4	A	509	5/5	0.90	0.34	80,80,80,80	0
5	SO4	A	506	5/5	0.95	0.14	60,60,61,61	0

*Continued on next page...*

*Continued from previous page...*

Mol	Type	Chain	Res	Atoms	RSCC	RSR	B-factors( $\text{\AA}^2$ )	Q<0.9
5	SO4	A	508	5/5	0.96	0.18	68,68,68,69	0

The following is a graphical depiction of the model fit to experimental electron density of all instances of the Ligand of Interest. In addition, ligands with molecular weight > 250 and outliers as shown on the geometry validation Tables will also be included. Each fit is shown from different orientation to approximate a three-dimensional view.



## 6.5 Other polymers [i](#)

There are no such residues in this entry.