



# Full wwPDB X-ray Structure Validation Report ⓘ

May 26, 2020 – 11:44 am BST

PDB ID : 4K3P  
Title : E. coli sliding clamp in complex with AcQLALF  
Authors : Yin, Z.; Oakley, A.J.  
Deposited on : 2013-04-11  
Resolution : 2.15 Å(reported)

This is a Full wwPDB X-ray Structure Validation Report for a publicly released PDB entry.

We welcome your comments at [validation@mail.wwpdb.org](mailto:validation@mail.wwpdb.org)

A user guide is available at

<https://www.wwpdb.org/validation/2017/XrayValidationReportHelp>

with specific help available everywhere you see the ⓘ symbol.

---

The following versions of software and data (see [references ⓘ](#)) were used in the production of this report:

MolProbity : 4.02b-467  
Mogul : 1.8.5 (274361), CSD as541be (2020)  
Xtriage (Phenix) : 1.13  
EDS : 2.11  
Percentile statistics : 20191225.v01 (using entries in the PDB archive December 25th 2019)  
Refmac : 5.8.0158  
CCP4 : 7.0.044 (Gargrove)  
Ideal geometry (proteins) : Engh & Huber (2001)  
Ideal geometry (DNA, RNA) : Parkinson et al. (1996)  
Validation Pipeline (wwPDB-VP) : 2.11

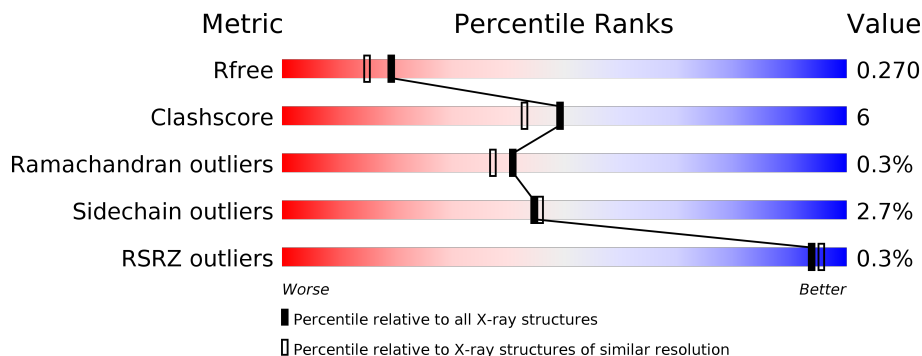
# 1 Overall quality at a glance

The following experimental techniques were used to determine the structure:

*X-RAY DIFFRACTION*

The reported resolution of this entry is 2.15 Å.

Percentile scores (ranging between 0-100) for global validation metrics of the entry are shown in the following graphic. The table shows the number of entries on which the scores are based.



Metric	Whole archive (#Entries)	Similar resolution (#Entries, resolution range(Å))
$R_{free}$	130704	1479 (2.16-2.16)
Clashscore	141614	1585 (2.16-2.16)
Ramachandran outliers	138981	1560 (2.16-2.16)
Sidechain outliers	138945	1559 (2.16-2.16)
RSRZ outliers	127900	1456 (2.16-2.16)

The table below summarises the geometric issues observed across the polymeric chains and their fit to the electron density. The red, orange, yellow and green segments on the lower bar indicate the fraction of residues that contain outliers for  $\geq 3$ , 2, 1 and 0 types of geometric quality criteria respectively. A grey segment represents the fraction of residues that are not modelled. The numeric value for each fraction is indicated below the corresponding segment, with a dot representing fractions  $\leq 5\%$ . The upper red bar (where present) indicates the fraction of residues that have poor fit to the electron density. The numeric value is given above the bar.

Mol	Chain	Length	Quality of chain
1	A	366	 84% 13% ..
1	B	366	 85% 12% ..
2	E	6	 67% 33%

## 2 Entry composition

There are 9 unique types of molecules in this entry. The entry contains 5800 atoms, of which 0 are hydrogens and 0 are deuteriums.

In the tables below, the ZeroOcc column contains the number of atoms modelled with zero occupancy, the AltConf column contains the number of residues with at least one atom in alternate conformation and the Trace column contains the number of residues modelled with at most 2 atoms.

- Molecule 1 is a protein called DNA polymerase III subunit beta.

Mol	Chain	Residues	Atoms					ZeroOcc	AltConf	Trace
			Total	C	N	O	S			
1	A	357	2798	1763	487	529	19	0	9	0
1	B	356	2763	1735	484	525	19	0	1	0

- Molecule 2 is a protein called (ACE)QLALF.

Mol	Chain	Residues	Atoms				ZeroOcc	AltConf	Trace
			Total	C	N	O			
2	E	6	45	31	6	8	0	0	0

- Molecule 3 is CALCIUM ION (three-letter code: CA) (formula: Ca).

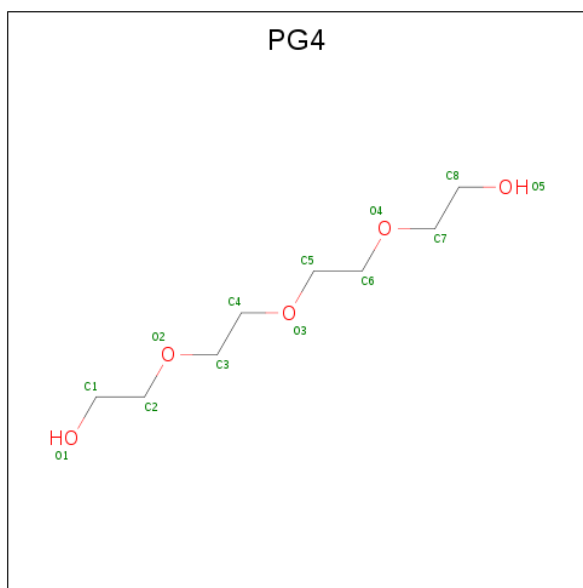
Mol	Chain	Residues	Atoms		ZeroOcc	AltConf
			Total	Ca		
3	B	2	2	2	0	0
3	A	3	3	3	0	0

- Molecule 4 is 1,2-ETHANEDIOL (three-letter code: EDO) (formula: C<sub>2</sub>H<sub>6</sub>O<sub>2</sub>).



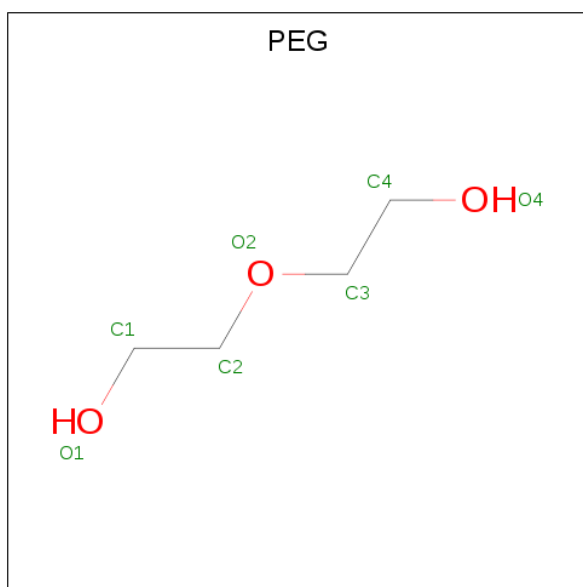
Mol	Chain	Residues	Atoms			ZeroOcc	AltConf
4	A	1	Total	C	O	0	0
			4	2	2		

- Molecule 5 is TETRAETHYLENE GLYCOL (three-letter code: PG4) (formula: C<sub>8</sub>H<sub>18</sub>O<sub>5</sub>).



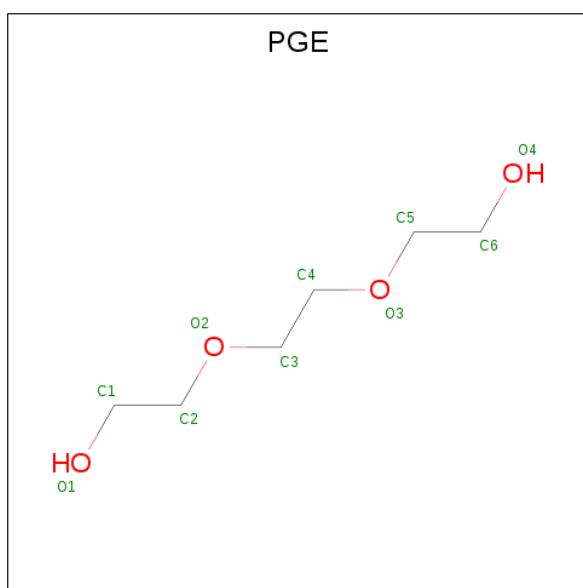
Mol	Chain	Residues	Atoms			ZeroOcc	AltConf
5	B	1	Total	C	O	0	0
			13	8	5		

- Molecule 6 is DI(HYDROXYETHYL)ETHER (three-letter code: PEG) (formula: C<sub>4</sub>H<sub>10</sub>O<sub>3</sub>).



Mol	Chain	Residues	Atoms			ZeroOcc	AltConf
6	B	1	Total	C	O	0	0
			7	4	3		
6	B	1	Total	C	O	0	0
			7	4	3		

- Molecule 7 is TRIETHYLENE GLYCOL (three-letter code: PGE) (formula:  $C_6H_{14}O_4$ ).



Mol	Chain	Residues	Atoms			ZeroOcc	AltConf
7	B	1	Total	C	O	0	0
			10	6	4		

- Molecule 8 is CHLORIDE ION (three-letter code: CL) (formula: Cl).

Mol	Chain	Residues	Atoms	ZeroOcc	AltConf
8	B	1	Total Cl 1 1	0	0

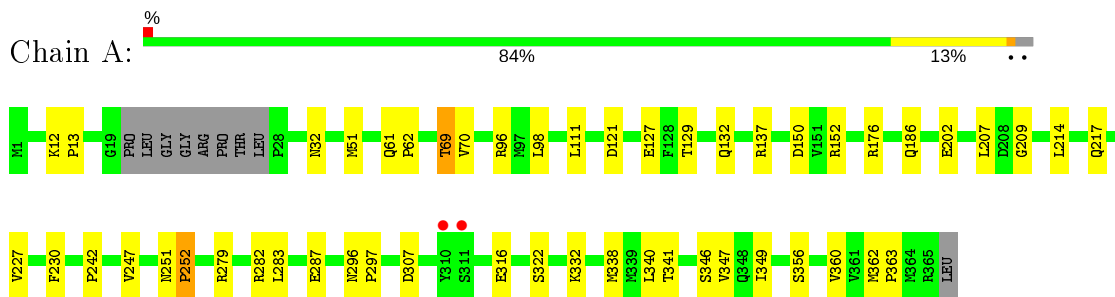
- Molecule 9 is water.

Mol	Chain	Residues	Atoms	ZeroOcc	AltConf
9	A	72	Total O 72 72	0	0
9	B	73	Total O 73 73	0	0
9	E	2	Total O 2 2	0	0

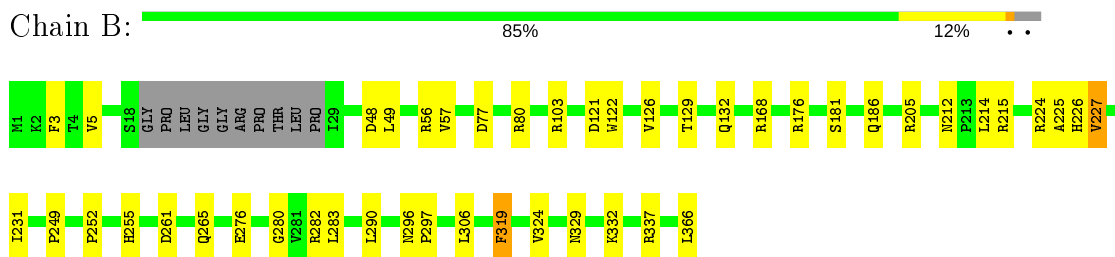
### 3 Residue-property plots [i](#)

These plots are drawn for all protein, RNA and DNA chains in the entry. The first graphic for a chain summarises the proportions of the various outlier classes displayed in the second graphic. The second graphic shows the sequence view annotated by issues in geometry and electron density. Residues are color-coded according to the number of geometric quality criteria for which they contain at least one outlier: green = 0, yellow = 1, orange = 2 and red = 3 or more. A red dot above a residue indicates a poor fit to the electron density ( $RSRZ > 2$ ). Stretches of 2 or more consecutive residues without any outlier are shown as a green connector. Residues present in the sample, but not in the model, are shown in grey.

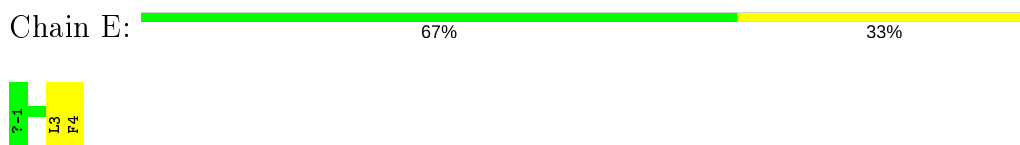
- Molecule 1: DNA polymerase III subunit beta



- Molecule 1: DNA polymerase III subunit beta



- Molecule 2: (ACE)QLALF



## 4 Data and refinement statistics

Property	Value	Source
Space group	P 1 21 1	Depositor
Cell constants a, b, c, $\alpha$ , $\beta$ , $\gamma$	79.96Å 66.68Å 80.92Å 90.00° 114.16° 90.00°	Depositor
Resolution (Å)	49.49 – 2.15 49.49 – 2.15	Depositor EDS
% Data completeness (in resolution range)	91.5 (49.49-2.15) 91.5 (49.49-2.15)	Depositor EDS
$R_{merge}$	(Not available)	Depositor
$R_{sym}$	0.07	Depositor
$\langle I/\sigma(I) \rangle$ <sup>1</sup>	2.17 (at 2.16Å)	Xtrriage
Refinement program	REFMAC 5.7.0029	Depositor
R, $R_{free}$	0.223 , 0.273 0.222 , 0.270	Depositor DCC
$R_{free}$ test set	1982 reflections (5.10%)	wwPDB-VP
Wilson B-factor (Å <sup>2</sup> )	33.1	Xtrriage
Anisotropy	0.056	Xtrriage
Bulk solvent $k_{sol}$ (e/Å <sup>3</sup> ), $B_{sol}$ (Å <sup>2</sup> )	0.35 , 36.0	EDS
L-test for twinning <sup>2</sup>	$\langle  L  \rangle = 0.46$ , $\langle L^2 \rangle = 0.29$	Xtrriage
Estimated twinning fraction	0.034 for l,-k,h	Xtrriage
$F_o, F_c$ correlation	0.94	EDS
Total number of atoms	5800	wwPDB-VP
Average B, all atoms (Å <sup>2</sup> )	32.0	wwPDB-VP

Xtrriage's analysis on translational NCS is as follows: *The largest off-origin peak in the Patterson function is 5.87% of the height of the origin peak. No significant pseudotranslation is detected.*

<sup>1</sup>Intensities estimated from amplitudes.

<sup>2</sup>Theoretical values of  $\langle |L| \rangle$ ,  $\langle L^2 \rangle$  for acentric reflections are 0.5, 0.333 respectively for untwinned datasets, and 0.375, 0.2 for perfectly twinned datasets.



## 5 Model quality [i](#)

### 5.1 Standard geometry [i](#)

Bond lengths and bond angles in the following residue types are not validated in this section: PGE, ACE, CL, CA, EDO, PG4, PEG

The Z score for a bond length (or angle) is the number of standard deviations the observed value is removed from the expected value. A bond length (or angle) with  $|Z| > 5$  is considered an outlier worth inspection. RMSZ is the root-mean-square of all Z scores of the bond lengths (or angles).

Mol	Chain	Bond lengths		Bond angles	
		RMSZ	# Z  >5	RMSZ	# Z  >5
1	A	0.35	0/2871	0.57	0/3886
1	B	0.36	0/2811	0.58	0/3806
2	E	0.52	0/43	0.63	0/56
All	All	0.36	0/5725	0.57	0/7748

There are no bond length outliers.

There are no bond angle outliers.

There are no chirality outliers.

There are no planarity outliers.

### 5.2 Too-close contacts [i](#)

In the following table, the Non-H and H(model) columns list the number of non-hydrogen atoms and hydrogen atoms in the chain respectively. The H(added) column lists the number of hydrogen atoms added and optimized by MolProbity. The Clashes column lists the number of clashes within the asymmetric unit, whereas Symm-Clashes lists symmetry related clashes.

Mol	Chain	Non-H	H(model)	H(added)	Clashes	Symm-Clashes
1	A	2798	0	2809	41	0
1	B	2763	0	2755	27	0
2	E	45	0	47	8	0
3	A	3	0	0	0	0
3	B	2	0	0	0	0
4	A	4	0	6	0	0
5	B	13	0	18	2	0
6	B	14	0	20	2	0
7	B	10	0	14	0	0
8	B	1	0	0	0	0

*Continued on next page...*

*Continued from previous page...*

Mol	Chain	Non-H	H(model)	H(added)	Clashes	Symm-Clashes
9	A	72	0	0	1	0
9	B	73	0	0	1	0
9	E	2	0	0	0	0
All	All	5800	0	5669	67	0

The all-atom clashscore is defined as the number of clashes found per 1000 atoms (including hydrogen atoms). The all-atom clashscore for this structure is 6.

All (67) close contacts within the same asymmetric unit are listed below, sorted by their clash magnitude.

Atom-1	Atom-2	Interatomic distance (Å)	Clash overlap (Å)
1:A:362:MET:HE2	2:E:3:LEU:HD23	1.46	0.94
1:A:32:ASN:HD22	1:A:69:THR:HG22	1.35	0.91
1:A:150:ASP:OD1	1:A:152:ARG:HD3	1.75	0.87
1:A:32:ASN:HD22	1:A:69:THR:CG2	1.90	0.84
1:A:247:VAL:HG13	2:E:3:LEU:HD22	1.58	0.84
1:A:362:MET:CE	2:E:3:LEU:HD23	2.09	0.81
1:A:32:ASN:HB3	1:A:69:THR:HG23	1.63	0.79
1:B:214:LEU:HD11	1:B:225:ALA:HB1	1.66	0.77
1:B:276:GLU:HG2	6:B:404:PEG:H12	1.65	0.77
1:A:338:MET:HG2	1:A:349:ILE:HG12	1.66	0.76
1:A:32:ASN:CB	1:A:69:THR:HG23	2.17	0.74
1:B:56:ARG:HH21	1:B:231:ILE:HD12	1.57	0.69
1:A:346:SER:HB3	1:A:362:MET:HE1	1.74	0.68
1:A:214:LEU:HD12	1:A:227:VAL:HB	1.77	0.66
1:A:69:THR:HB	1:A:111:LEU:O	2.02	0.60
1:A:307:ASP:OD1	1:B:103[B]:ARG:NH1	2.31	0.58
1:A:247:VAL:HG13	2:E:3:LEU:CD2	2.33	0.58
1:B:77:ASP:OD1	1:B:80:ARG:NH2	2.36	0.58
1:A:12:LYS:HB3	1:A:13:PRO:HD3	1.87	0.56
1:B:168:ARG:HD3	1:B:181:SER:OG	2.06	0.55
1:B:282:ARG:NH2	1:B:366:LEU:O	2.40	0.55
1:B:129:THR:O	1:B:186:GLN:NE2	2.40	0.55
1:A:362:MET:SD	1:A:363:PRO:HD2	2.47	0.55
1:B:319:PHE:CE1	1:B:324:VAL:HG21	2.43	0.54
1:B:261:ASP:O	1:B:265:GLN:HG2	2.08	0.53
1:A:132:GLN:OE1	1:A:209:GLY:N	2.33	0.52
1:A:137:ARG:HH21	1:A:356:SER:HB2	1.74	0.52
1:B:280:GLY:HA3	1:B:366:LEU:HD21	1.91	0.52
1:B:215:ARG:HB3	1:B:226:HIS:HB2	1.92	0.52
1:A:247:VAL:HG12	1:A:360:VAL:HG11	1.92	0.51

*Continued on next page...*

Continued from previous page...

Atom-1	Atom-2	Interatomic distance (Å)	Clash overlap (Å)
1:A:279:ARG:HD3	1:A:322[B]:SER:OG	2.10	0.51
1:A:61:GLN:HB3	1:A:62:PRO:HD2	1.93	0.49
1:B:329:ASN:O	1:B:332:LYS:HG3	2.12	0.49
1:A:346:SER:HB3	1:A:362:MET:CE	2.41	0.49
1:A:362:MET:HE1	9:A:568:HOH:O	2.12	0.49
1:A:362:MET:HE3	2:E:3:LEU:HA	1.94	0.49
1:A:296:ASN:HB2	1:A:297:PRO:HD2	1.95	0.49
1:A:338:MET:HE3	1:A:347:VAL:HG21	1.96	0.48
1:B:56:ARG:HD3	9:B:539:HOH:O	2.15	0.47
1:B:255:HIS:ND1	1:B:337:ARG:HD2	2.29	0.47
1:B:276:GLU:HG2	6:B:404:PEG:C1	2.39	0.47
1:B:132:GLN:HG3	1:B:212:ASN:O	2.15	0.47
1:B:249:PRO:HB2	1:B:252:PRO:HG3	1.97	0.46
1:A:362:MET:CE	2:E:3:LEU:HA	2.45	0.46
1:A:362:MET:HE2	2:E:3:LEU:CD2	2.32	0.46
1:A:13:PRO:HA	1:A:230:PHE:HE1	1.81	0.45
1:A:129:THR:O	1:A:186:GLN:NE2	2.49	0.45
1:A:61:GLN:HB3	1:A:62:PRO:CD	2.46	0.45
1:A:242:PRO:HG3	2:E:4:PHE:CZ	2.52	0.45
1:A:51:MET:CE	1:A:202:GLU:HG3	2.46	0.45
1:B:226:HIS:CD2	1:B:231:ILE:HG12	2.53	0.44
1:A:132:GLN:HG3	1:A:207:LEU:HD22	1.99	0.44
1:B:283:LEU:HG	1:B:290:LEU:HD11	2.00	0.44
1:B:122:TRP:O	5:B:401:PG4:H52	2.19	0.43
1:B:3:PHE:HD1	1:B:5:VAL:HG23	1.82	0.43
1:A:32:ASN:ND2	1:A:69:THR:CG2	2.72	0.43
1:B:48:ASP:O	1:B:49:LEU:HB2	2.19	0.43
1:B:224:ARG:HH22	5:B:401:PG4:H72	1.83	0.43
1:B:214:LEU:HD13	1:B:227:VAL:HG22	2.00	0.42
1:B:226:HIS:HD2	1:B:231:ILE:HG12	1.85	0.42
1:A:282[A]:ARG:CZ	1:A:316:GLU:OE2	2.68	0.42
1:A:251:ASN:HA	1:A:252:PRO:HD3	1.86	0.41
1:A:283:LEU:O	1:A:316:GLU:HA	2.20	0.41
1:A:127:GLU:HG2	1:A:217:GLN:HG2	2.02	0.41
1:A:340:LEU:HG	1:A:347:VAL:HG23	2.03	0.41
1:A:51:MET:HE1	1:A:202:GLU:HG3	2.03	0.40
1:B:296:ASN:HB2	1:B:297:PRO:CD	2.50	0.40

There are no symmetry-related clashes.

## 5.3 Torsion angles [i](#)

### 5.3.1 Protein backbone [i](#)

In the following table, the Percentiles column shows the percent Ramachandran outliers of the chain as a percentile score with respect to all X-ray entries followed by that with respect to entries of similar resolution.

The Analysed column shows the number of residues for which the backbone conformation was analysed, and the total number of residues.

Mol	Chain	Analysed	Favoured	Allowed	Outliers	Percentiles	
1	A	362/366 (99%)	356 (98%)	4 (1%)	2 (1%)	25	18
1	B	353/366 (96%)	343 (97%)	10 (3%)	0	100	100
2	E	4/6 (67%)	4 (100%)	0	0	100	100
All	All	719/738 (97%)	703 (98%)	14 (2%)	2 (0%)	41	37

All (2) Ramachandran outliers are listed below:

Mol	Chain	Res	Type
1	A	252	PRO
1	A	287	GLU

### 5.3.2 Protein sidechains [i](#)

In the following table, the Percentiles column shows the percent sidechain outliers of the chain as a percentile score with respect to all X-ray entries followed by that with respect to entries of similar resolution.

The Analysed column shows the number of residues for which the sidechain conformation was analysed, and the total number of residues.

Mol	Chain	Analysed	Rotameric	Outliers	Percentiles	
1	A	306/313 (98%)	297 (97%)	9 (3%)	42	42
1	B	301/313 (96%)	293 (97%)	8 (3%)	44	46
2	E	4/4 (100%)	4 (100%)	0	100	100
All	All	611/630 (97%)	594 (97%)	17 (3%)	44	44

All (17) residues with a non-rotameric sidechain are listed below:

Mol	Chain	Res	Type
1	A	69	THR

*Continued on next page...*

*Continued from previous page...*

Mol	Chain	Res	Type
1	A	70[A]	VAL
1	A	70[B]	VAL
1	A	96	ARG
1	A	98	LEU
1	A	121	ASP
1	A	176	ARG
1	A	332	LYS
1	A	341	THR
1	B	57	VAL
1	B	121	ASP
1	B	126	VAL
1	B	176	ARG
1	B	205	ARG
1	B	227	VAL
1	B	306	LEU
1	B	319	PHE

Some sidechains can be flipped to improve hydrogen bonding and reduce clashes. All (11) such sidechains are listed below:

Mol	Chain	Res	Type
1	A	16	GLN
1	A	32	ASN
1	A	36	GLN
1	A	118	ASN
1	A	123	GLN
1	A	191	HIS
1	B	36	GLN
1	B	123	GLN
1	B	212	ASN
1	B	226	HIS
1	B	355	GLN

### 5.3.3 RNA [i](#)

There are no RNA molecules in this entry.

### 5.4 Non-standard residues in protein, DNA, RNA chains [i](#)

There are no non-standard protein/DNA/RNA residues in this entry.

## 5.5 Carbohydrates [i](#)

There are no carbohydrates in this entry.

## 5.6 Ligand geometry [i](#)

Of 11 ligands modelled in this entry, 6 are monoatomic - leaving 5 for Mogul analysis.

In the following table, the Counts columns list the number of bonds (or angles) for which Mogul statistics could be retrieved, the number of bonds (or angles) that are observed in the model and the number of bonds (or angles) that are defined in the Chemical Component Dictionary. The Link column lists molecule types, if any, to which the group is linked. The Z score for a bond length (or angle) is the number of standard deviations the observed value is removed from the expected value. A bond length (or angle) with  $|Z| > 2$  is considered an outlier worth inspection. RMSZ is the root-mean-square of all Z scores of the bond lengths (or angles).

Mol	Type	Chain	Res	Link	Bond lengths			Bond angles		
					Counts	RMSZ	# Z  > 2	Counts	RMSZ	# Z  > 2
6	PEG	B	404	-	6,6,6	0.51	0	5,5,5	0.26	0
7	PGE	B	405	-	9,9,9	0.48	0	8,8,8	0.22	0
5	PG4	B	401	-	12,12,12	0.46	0	11,11,11	0.34	0
4	EDO	A	402	-	3,3,3	0.48	0	2,2,2	0.35	0
6	PEG	B	402	-	6,6,6	0.51	0	5,5,5	0.23	0

In the following table, the Chirals column lists the number of chiral outliers, the number of chiral centers analysed, the number of these observed in the model and the number defined in the Chemical Component Dictionary. Similar counts are reported in the Torsion and Rings columns. '-' means no outliers of that kind were identified.

Mol	Type	Chain	Res	Link	Chirals	Torsions	Rings
6	PEG	B	404	-	-	2/4/4/4	-
7	PGE	B	405	-	-	4/7/7/7	-
5	PG4	B	401	-	-	7/10/10/10	-
4	EDO	A	402	-	-	0/1/1/1	-
6	PEG	B	402	-	-	4/4/4/4	-

There are no bond length outliers.

There are no bond angle outliers.

There are no chirality outliers.

All (17) torsion outliers are listed below:

Mol	Chain	Res	Type	Atoms
5	B	401	PG4	O3-C5-C6-O4
5	B	401	PG4	O1-C1-C2-O2
6	B	402	PEG	O1-C1-C2-O2
6	B	404	PEG	O1-C1-C2-O2
7	B	405	PGE	O1-C1-C2-O2
5	B	401	PG4	O4-C7-C8-O5
6	B	402	PEG	O2-C3-C4-O4
7	B	405	PGE	C4-C3-O2-C2
7	B	405	PGE	C6-C5-O3-C4
7	B	405	PGE	C1-C2-O2-C3
5	B	401	PG4	C3-C4-O3-C5
6	B	404	PEG	O2-C3-C4-O4
6	B	402	PEG	C4-C3-O2-C2
5	B	401	PG4	C8-C7-O4-C6
6	B	402	PEG	C1-C2-O2-C3
5	B	401	PG4	O2-C3-C4-O3
5	B	401	PG4	C4-C3-O2-C2

There are no ring outliers.

2 monomers are involved in 4 short contacts:

Mol	Chain	Res	Type	Clashes	Symm-Clashes
6	B	404	PEG	2	0
5	B	401	PG4	2	0

## 5.7 Other polymers [i](#)

There are no such residues in this entry.

## 5.8 Polymer linkage issues [i](#)

There are no chain breaks in this entry.

## 6 Fit of model and data [i](#)

### 6.1 Protein, DNA and RNA chains [i](#)

In the following table, the column labelled '#RSRZ> 2' contains the number (and percentage) of RSRZ outliers, followed by percent RSRZ outliers for the chain as percentile scores relative to all X-ray entries and entries of similar resolution. The OWAB column contains the minimum, median, 95<sup>th</sup> percentile and maximum values of the occupancy-weighted average B-factor per residue. The column labelled 'Q< 0.9' lists the number of (and percentage) of residues with an average occupancy less than 0.9.

Mol	Chain	Analysed	<RSRZ>	#RSRZ>2	OWAB(Å <sup>2</sup> )	Q<0.9
1	A	357/366 (97%)	0.04	2 (0%) 89   91	20, 33, 48, 63	9 (2%)
1	B	356/366 (97%)	-0.01	0 100   100	18, 29, 44, 54	9 (2%)
2	E	5/6 (83%)	0.31	0 100   100	31, 33, 35, 42	0
All	All	718/738 (97%)	0.02	2 (0%) 94   95	18, 31, 46, 63	18 (2%)

All (2) RSRZ outliers are listed below:

Mol	Chain	Res	Type	RSRZ
1	A	311	SER	4.8
1	A	310	TYR	2.4

### 6.2 Non-standard residues in protein, DNA, RNA chains [i](#)

There are no non-standard protein/DNA/RNA residues in this entry.

### 6.3 Carbohydrates [i](#)

There are no carbohydrates in this entry.

### 6.4 Ligands [i](#)

In the following table, the Atoms column lists the number of modelled atoms in the group and the number defined in the chemical component dictionary. The B-factors column lists the minimum, median, 95<sup>th</sup> percentile and maximum values of B factors of atoms in the group. The column labelled 'Q< 0.9' lists the number of atoms with occupancy less than 0.9.

Mol	Type	Chain	Res	Atoms	RSCC	RSR	B-factors(Å <sup>2</sup> )	Q<0.9
6	PEG	B	402	7/7	0.78	0.22	39,43,43,44	0

*Continued on next page...*



*Continued from previous page...*

Mol	Type	Chain	Res	Atoms	RSCC	RSR	B-factors( $\text{\AA}^2$ )	Q<0.9
5	PG4	B	401	13/13	0.81	0.20	53,60,62,62	0
6	PEG	B	404	7/7	0.81	0.26	35,43,48,49	0
4	EDO	A	402	4/4	0.81	0.16	52,53,54,54	0
7	PGE	B	405	10/10	0.85	0.18	50,54,57,58	0
3	CA	A	403	1/1	0.86	0.09	67,67,67,67	0
3	CA	B	403	1/1	0.91	0.14	51,51,51,51	0
8	CL	B	407	1/1	0.91	0.11	62,62,62,62	0
3	CA	A	401	1/1	0.97	0.13	64,64,64,64	0
3	CA	A	404	1/1	0.97	0.35	68,68,68,68	0
3	CA	B	406	1/1	0.98	0.05	43,43,43,43	0

## 6.5 Other polymers [i](#)

There are no such residues in this entry.