



# Full wwPDB X-ray Structure Validation Report ⓘ

May 21, 2020 – 11:02 pm BST

PDB ID : 4IQN  
Title : Crystal structure of uncharacterized protein from Salmonella enterica subsp. enterica serovar typhimurium str. 14028s  
Authors : Chang, C.; Hatzos-Skintges, C.; Adkins, J.N.; Brown, R.N.; Cort, J.R.; Hefron, F.; Nakayasu, E.S.; Jedrzejczak, R.; Joachimiak, A.; Midwest Center for Structural Genomics (MCSG); Program for the Characterization of Secreted Effector Proteins (PCSEP)  
Deposited on : 2013-01-11  
Resolution : 1.75 Å(reported)

This is a Full wwPDB X-ray Structure Validation Report for a publicly released PDB entry.

We welcome your comments at [validation@mail.wwpdb.org](mailto:validation@mail.wwpdb.org)

A user guide is available at

<https://www.wwpdb.org/validation/2017/XrayValidationReportHelp>

with specific help available everywhere you see the ⓘ symbol.

---

The following versions of software and data (see [references ⓘ](#)) were used in the production of this report:

MolProbity : 4.02b-467  
Mogul : 1.8.5 (274361), CSD as541be (2020)  
Xtriage (Phenix) : 1.13  
EDS : 2.11  
Percentile statistics : 20191225.v01 (using entries in the PDB archive December 25th 2019)  
Refmac : 5.8.0158  
CCP4 : 7.0.044 (Gargrove)  
Ideal geometry (proteins) : Engh & Huber (2001)  
Ideal geometry (DNA, RNA) : Parkinson et al. (1996)  
Validation Pipeline (wwPDB-VP) : 2.11

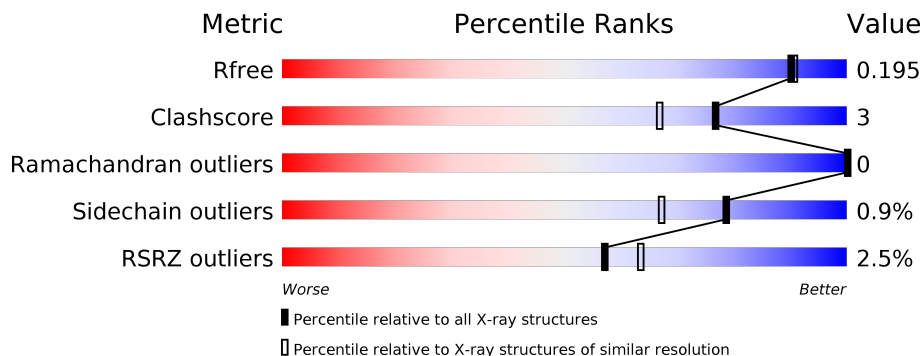
# 1 Overall quality at a glance i

The following experimental techniques were used to determine the structure:

*X-RAY DIFFRACTION*

The reported resolution of this entry is 1.75 Å.

Percentile scores (ranging between 0-100) for global validation metrics of the entry are shown in the following graphic. The table shows the number of entries on which the scores are based.



Metric	Whole archive (#Entries)	Similar resolution (#Entries, resolution range(Å))
$R_{free}$	130704	2340 (1.76-1.76)
Clashscore	141614	2466 (1.76-1.76)
Ramachandran outliers	138981	2437 (1.76-1.76)
Sidechain outliers	138945	2437 (1.76-1.76)
RSRZ outliers	127900	2298 (1.76-1.76)

The table below summarises the geometric issues observed across the polymeric chains and their fit to the electron density. The red, orange, yellow and green segments on the lower bar indicate the fraction of residues that contain outliers for  $\geq 3$ , 2, 1 and 0 types of geometric quality criteria respectively. A grey segment represents the fraction of residues that are not modelled. The numeric value for each fraction is indicated below the corresponding segment, with a dot representing fractions  $\leq 5\%$ . The upper red bar (where present) indicates the fraction of residues that have poor fit to the electron density. The numeric value is given above the bar.

Mol	Chain	Length	Quality of chain
1	A	225	 4% 89% 9%
2	B	225	 2% 88% 9%
3	C	225	 0% 91% 7%

## 2 Entry composition [i](#)

There are 6 unique types of molecules in this entry. The entry contains 6226 atoms, of which 0 are hydrogens and 0 are deuteriums.

In the tables below, the ZeroOcc column contains the number of atoms modelled with zero occupancy, the AltConf column contains the number of residues with at least one atom in alternate conformation and the Trace column contains the number of residues modelled with at most 2 atoms.

- Molecule 1 is a protein called Putative cytoplasmic protein.

Mol	Chain	Residues	Atoms					ZeroOcc	AltConf	Trace
			Total	C	N	O	Se			
1	A	222	1872	1181	309	374	8	0	8	0

There are 3 discrepancies between the modelled and reference sequences:

Chain	Residue	Modelled	Actual	Comment	Reference
A	-2	SER	-	EXPRESSION TAG	UNP D0ZRV8
A	-1	ASN	-	EXPRESSION TAG	UNP D0ZRV8
A	0	ALA	-	EXPRESSION TAG	UNP D0ZRV8

- Molecule 2 is a protein called Putative cytoplasmic protein.

Mol	Chain	Residues	Atoms					ZeroOcc	AltConf	Trace
			Total	C	N	O	Se			
2	B	219	1908	1201	314	383	10	0	14	0

There are 3 discrepancies between the modelled and reference sequences:

Chain	Residue	Modelled	Actual	Comment	Reference
B	-2	SER	-	EXPRESSION TAG	UNP D0ZRV8
B	-1	ASN	-	EXPRESSION TAG	UNP D0ZRV8
B	0	ALA	-	EXPRESSION TAG	UNP D0ZRV8

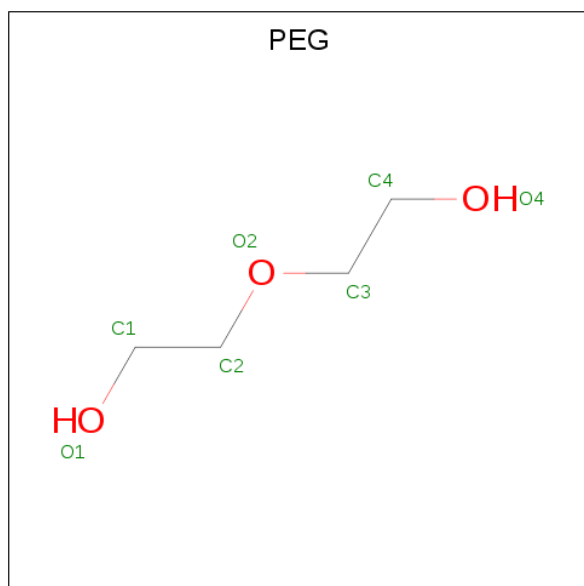
- Molecule 3 is a protein called Putative cytoplasmic protein.

Mol	Chain	Residues	Atoms					ZeroOcc	AltConf	Trace
			Total	C	N	O	Se			
3	C	220	1880	1183	312	376	9	0	10	0

There are 3 discrepancies between the modelled and reference sequences:

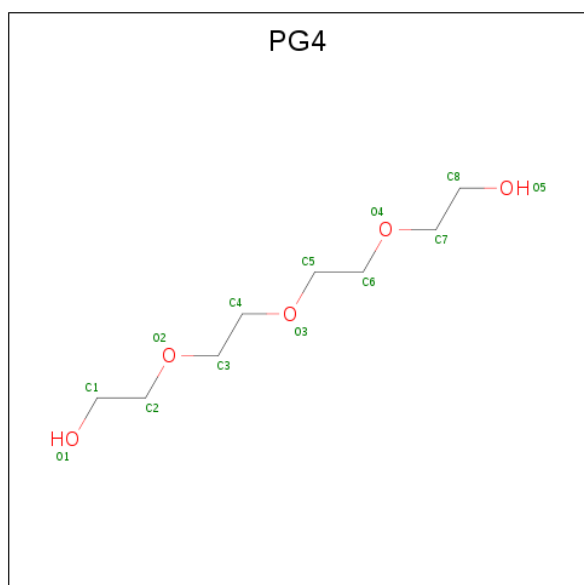
Chain	Residue	Modelled	Actual	Comment	Reference
C	-2	SER	-	EXPRESSION TAG	UNP D0ZRV8
C	-1	ASN	-	EXPRESSION TAG	UNP D0ZRV8
C	0	ALA	-	EXPRESSION TAG	UNP D0ZRV8

- Molecule 4 is DI(HYDROXYETHYL)ETHER (three-letter code: PEG) (formula:  $C_4H_{10}O_3$ ).



Mol	Chain	Residues	Atoms		ZeroOcc	AltConf	
4	B	1	Total	C	O	0	0
			7	4	3		

- Molecule 5 is TETRAETHYLENE GLYCOL (three-letter code: PG4) (formula:  $C_8H_{18}O_5$ ).



Mol	Chain	Residues	Atoms			ZeroOcc	AltConf
5	C	1	Total	C	O	0	0
			13	8	5		

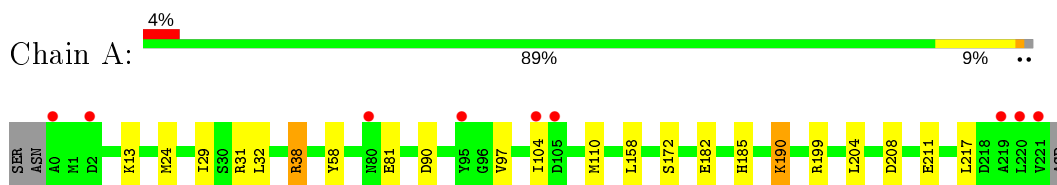
- Molecule 6 is water.

Mol	Chain	Residues	Atoms		ZeroOcc	AltConf
6	A	160	Total	O	0	0
			160	160		
6	B	198	Total	O	0	0
			198	198		
6	C	188	Total	O	0	0
			188	188		

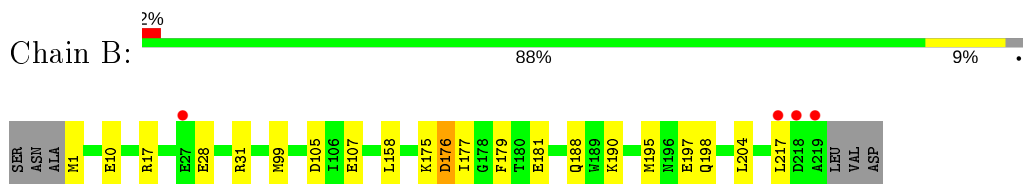
### 3 Residue-property plots [i](#)

These plots are drawn for all protein, RNA and DNA chains in the entry. The first graphic for a chain summarises the proportions of the various outlier classes displayed in the second graphic. The second graphic shows the sequence view annotated by issues in geometry and electron density. Residues are color-coded according to the number of geometric quality criteria for which they contain at least one outlier: green = 0, yellow = 1, orange = 2 and red = 3 or more. A red dot above a residue indicates a poor fit to the electron density ( $RSRZ > 2$ ). Stretches of 2 or more consecutive residues without any outlier are shown as a green connector. Residues present in the sample, but not in the model, are shown in grey.

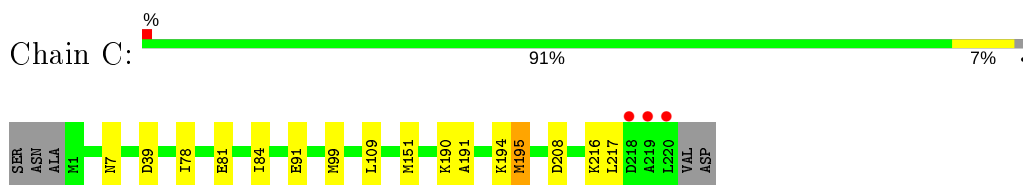
- Molecule 1: Putative cytoplasmic protein



- Molecule 2: Putative cytoplasmic protein



- Molecule 3: Putative cytoplasmic protein



## 4 Data and refinement statistics

Property	Value	Source
Space group	P 1 21 1	Depositor
Cell constants a, b, c, $\alpha$ , $\beta$ , $\gamma$	62.14Å 95.48Å 69.90Å 90.00° 109.66° 90.00°	Depositor
Resolution (Å)	31.13 – 1.75 31.11 – 1.75	Depositor EDS
% Data completeness (in resolution range)	99.0 (31.13-1.75) 99.0 (31.11-1.75)	Depositor EDS
$R_{merge}$	0.09	Depositor
$R_{sym}$	(Not available)	Depositor
$\langle I/\sigma(I) \rangle$ <sup>1</sup>	2.78 (at 1.75Å)	Xtrriage
Refinement program	REFMAC 5.7.0029	Depositor
R, $R_{free}$	0.135 , 0.196 0.135 , 0.195	Depositor DCC
$R_{free}$ test set	3848 reflections (5.03%)	wwPDB-VP
Wilson B-factor (Å <sup>2</sup> )	23.4	Xtrriage
Anisotropy	0.347	Xtrriage
Bulk solvent $k_{sol}$ (e/Å <sup>3</sup> ), $B_{sol}$ (Å <sup>2</sup> )	0.36 , 44.2	EDS
L-test for twinning <sup>2</sup>	$\langle  L  \rangle = 0.49$ , $\langle L^2 \rangle = 0.33$	Xtrriage
Estimated twinning fraction	No twinning to report.	Xtrriage
$F_o, F_c$ correlation	0.97	EDS
Total number of atoms	6226	wwPDB-VP
Average B, all atoms (Å <sup>2</sup> )	28.0	wwPDB-VP

Xtrriage's analysis on translational NCS is as follows: *The largest off-origin peak in the Patterson function is 8.22% of the height of the origin peak. No significant pseudotranslation is detected.*

<sup>1</sup>Intensities estimated from amplitudes.

<sup>2</sup>Theoretical values of  $\langle |L| \rangle$ ,  $\langle L^2 \rangle$  for acentric reflections are 0.5, 0.333 respectively for untwinned datasets, and 0.375, 0.2 for perfectly twinned datasets.

## 5 Model quality [i](#)

### 5.1 Standard geometry [i](#)

Bond lengths and bond angles in the following residue types are not validated in this section: MLZ, PG4, MLY, PEG

The Z score for a bond length (or angle) is the number of standard deviations the observed value is removed from the expected value. A bond length (or angle) with  $|Z| > 5$  is considered an outlier worth inspection. RMSZ is the root-mean-square of all Z scores of the bond lengths (or angles).

Mol	Chain	Bond lengths		Bond angles	
		RMSZ	# Z  >5	RMSZ	# Z  >5
1	A	0.69	0/1869	0.80	4/2530 (0.2%)
2	B	0.72	0/1884	0.81	2/2549 (0.1%)
3	C	0.66	0/1867	0.78	5/2526 (0.2%)
All	All	0.69	0/5620	0.79	11/7605 (0.1%)

Chiral center outliers are detected by calculating the chiral volume of a chiral center and verifying if the center is modelled as a planar moiety or with the opposite hand. A planarity outlier is detected by checking planarity of atoms in a peptide group, atoms in a mainchain group or atoms of a sidechain that are expected to be planar.

Mol	Chain	#Chirality outliers	#Planarity outliers
1	A	0	1
2	B	0	1
All	All	0	2

There are no bond length outliers.

All (11) bond angle outliers are listed below:

Mol	Chain	Res	Type	Atoms	Z	Observed(°)	Ideal(°)
2	B	17	ARG	NE-CZ-NH1	7.52	124.06	120.30
1	A	90	ASP	CB-CG-OD1	-6.93	112.06	118.30
3	C	151	MSE	CG-SE-CE	-6.78	83.99	98.90
3	C	208	ASP	CB-CG-OD1	6.47	124.12	118.30
2	B	17	ARG	NE-CZ-NH2	-6.34	117.13	120.30
3	C	39	ASP	CB-CG-OD1	6.00	123.70	118.30
1	A	199	ARG	NE-CZ-NH1	5.35	122.97	120.30
1	A	208	ASP	CB-CG-OD1	5.34	123.11	118.30
3	C	208	ASP	CB-CG-OD2	-5.16	113.66	118.30
3	C	195	MSE	CG-SE-CE	5.08	110.08	98.90
1	A	31	ARG	NE-CZ-NH1	5.07	122.83	120.30



There are no chirality outliers.

All (2) planarity outliers are listed below:

Mol	Chain	Res	Type	Group
1	A	110	MSE	Peptide
2	B	176[B]	ASP	Peptide

## 5.2 Too-close contacts

In the following table, the Non-H and H(model) columns list the number of non-hydrogen atoms and hydrogen atoms in the chain respectively. The H(added) column lists the number of hydrogen atoms added and optimized by MolProbity. The Clashes column lists the number of clashes within the asymmetric unit, whereas Symm-Clashes lists symmetry related clashes.

Mol	Chain	Non-H	H(model)	H(added)	Clashes	Symm-Clashes
1	A	1872	0	1810	14	0
2	B	1908	0	1831	13	0
3	C	1880	0	1811	10	0
4	B	7	0	10	0	0
5	C	13	0	18	0	0
6	A	160	0	0	6	0
6	B	198	0	0	3	0
6	C	188	0	0	2	0
All	All	6226	0	5480	34	0

The all-atom clashscore is defined as the number of clashes found per 1000 atoms (including hydrogen atoms). The all-atom clashscore for this structure is 3.

All (34) close contacts within the same asymmetric unit are listed below, sorted by their clash magnitude.

Atom-1	Atom-2	Interatomic distance (Å)	Clash overlap (Å)
1:A:24:MSE:HE1	1:A:32:LEU:HD11	1.55	0.87
2:B:158:LEU:HG	2:B:204:LEU:HD11	1.58	0.85
3:C:7[A]:ASN:OD1	6:C:587:HOH:O	2.00	0.79
1:A:172:SER:O	6:A:385:HOH:O	2.14	0.65
2:B:105[A]:ASP:OD1	2:B:107:GLU:OE1	2.16	0.64
2:B:181[A]:GLU:HG3	6:B:503:HOH:O	1.98	0.64
2:B:175[B]:LYS:O	2:B:176[B]:ASP:HB2	2.01	0.59
1:A:185:HIS:HE1	6:A:390:HOH:O	1.86	0.57
1:A:190:LYS:HG3	6:A:378:HOH:O	2.05	0.57
2:B:197[B]:GLU:HG3	2:B:198:GLN:N	2.19	0.57
1:A:217:LEU:HD13	3:C:194:LYS:HE3	1.87	0.56

*Continued on next page...*

Continued from previous page...

Atom-1	Atom-2	Interatomic distance (Å)	Clash overlap (Å)
1:A:81[B]:GLU:HG2	1:A:81[B]:GLU:O	2.08	0.54
3:C:99[B]:MSE:HE3	3:C:217:LEU:HG	1.90	0.53
3:C:78:ILE:HG12	3:C:84:ILE:HG12	1.92	0.51
3:C:191:ALA:HB1	3:C:195:MSE:HE2	1.92	0.51
3:C:99[B]:MSE:HE3	3:C:217:LEU:CG	2.42	0.49
2:B:10[A]:GLU:HG2	6:B:597:HOH:O	2.14	0.47
1:A:158:LEU:HG	1:A:204:LEU:HD11	1.98	0.46
2:B:177:ILE:HG23	2:B:179:PHE:CE2	2.50	0.46
2:B:188:GLN:HG2	6:B:428:HOH:O	2.16	0.45
1:A:13:LYS:HG2	1:A:58:TYR:CE1	2.52	0.45
3:C:91[B]:GLU:HG3	6:C:486:HOH:O	2.16	0.45
1:A:182:GLU:OE1	6:A:414:HOH:O	2.21	0.44
3:C:109:LEU:HD23	3:C:216:MLZ:HD3	2.00	0.44
1:A:81[B]:GLU:CG	1:A:81[B]:GLU:O	2.66	0.43
2:B:99[A]:MSE:HE3	2:B:217:LEU:HD22	1.99	0.43
1:A:24:MSE:HE2	1:A:29:ILE:CG1	2.48	0.43
2:B:28:GLU:O	2:B:31[B]:ARG:HG2	2.19	0.43
1:A:211:GLU:OE1	3:C:190:MLY:HH11	2.19	0.43
6:A:376:HOH:O	2:B:190:MLY:HE3	2.19	0.42
2:B:177:ILE:HD13	2:B:177:ILE:HA	1.94	0.42
1:A:38:ARG:HD2	6:A:333:HOH:O	2.19	0.41
1:A:97:VAL:HA	3:C:195:MSE:HG2	2.02	0.41
2:B:195:MSE:HB3	2:B:195:MSE:HE2	1.88	0.40

There are no symmetry-related clashes.

## 5.3 Torsion angles [i](#)

### 5.3.1 Protein backbone [i](#)

In the following table, the Percentiles column shows the percent Ramachandran outliers of the chain as a percentile score with respect to all X-ray entries followed by that with respect to entries of similar resolution.

The Analysed column shows the number of residues for which the backbone conformation was analysed, and the total number of residues.

Mol	Chain	Analysed	Favoured	Allowed	Outliers	Percentiles	
1	A	225/225 (100%)	219 (97%)	6 (3%)	0	100	100
2	B	226/225 (100%)	216 (96%)	10 (4%)	0	100	100

Continued on next page...

Continued from previous page...

Mol	Chain	Analysed	Favoured	Allowed	Outliers	Percentiles	
3	C	224/225 (100%)	217 (97%)	7 (3%)	0	100	100
All	All	675/675 (100%)	652 (97%)	23 (3%)	0	100	100

There are no Ramachandran outliers to report.

### 5.3.2 Protein sidechains [i](#)

In the following table, the Percentiles column shows the percent sidechain outliers of the chain as a percentile score with respect to all X-ray entries followed by that with respect to entries of similar resolution.

The Analysed column shows the number of residues for which the sidechain conformation was analysed, and the total number of residues.

Mol	Chain	Analysed	Rotameric	Outliers	Percentiles	
1	A	202/190 (106%)	199 (98%)	3 (2%)	65	49
2	B	203/188 (108%)	202 (100%)	1 (0%)	88	83
3	C	202/189 (107%)	201 (100%)	1 (0%)	88	83
All	All	607/567 (107%)	602 (99%)	5 (1%)	78	72

All (5) residues with a non-rotameric sidechain are listed below:

Mol	Chain	Res	Type
1	A	38	ARG
1	A	104	ILE
1	A	190	LYS
2	B	1	MSE
3	C	81	GLU

Some sidechains can be flipped to improve hydrogen bonding and reduce clashes. There are no such sidechains identified.

### 5.3.3 RNA [i](#)

There are no RNA molecules in this entry.

## 5.4 Non-standard residues in protein, DNA, RNA chains [i](#)

12 non-standard protein/DNA/RNA residues are modelled in this entry.

In the following table, the Counts columns list the number of bonds (or angles) for which Mogul statistics could be retrieved, the number of bonds (or angles) that are observed in the model and the number of bonds (or angles) that are defined in the Chemical Component Dictionary. The Link column lists molecule types, if any, to which the group is linked. The Z score for a bond length (or angle) is the number of standard deviations the observed value is removed from the expected value. A bond length (or angle) with  $|Z| > 2$  is considered an outlier worth inspection. RMSZ is the root-mean-square of all Z scores of the bond lengths (or angles).

Mol	Type	Chain	Res	Link	Bond lengths			Bond angles		
					Counts	RMSZ	# Z  > 2	Counts	RMSZ	# Z  > 2
2	MLY	B	36	2	9,10,11	0.82	0	6,11,13	0.67	0
3	MLZ	C	216	3	8,9,10	0.76	0	4,9,11	1.31	1 (25%)
1	MLY	A	175	1	9,10,11	0.85	0	6,11,13	1.33	0
3	MLY	C	13	3	9,10,11	0.74	0	6,11,13	1.12	0
2	MLY	B	14	2	9,10,11	0.79	0	6,11,13	0.77	0
3	MLY	C	53	3	9,10,11	0.41	0	6,11,13	1.53	1 (16%)
2	MLY	B	53	2	9,10,11	0.72	0	6,11,13	1.15	1 (16%)
1	MLY	A	53	1	9,10,11	0.48	0	6,11,13	1.49	2 (33%)
1	MLY	A	216	1	9,10,11	0.73	0	6,11,13	0.53	0
2	MLY	B	13	2	9,10,11	0.61	0	6,11,13	0.40	0
3	MLY	C	190	3	9,10,11	0.84	0	6,11,13	0.70	0
2	MLY	B	190	2	9,10,11	0.68	0	6,11,13	0.85	0

In the following table, the Chirals column lists the number of chiral outliers, the number of chiral centers analysed, the number of these observed in the model and the number defined in the Chemical Component Dictionary. Similar counts are reported in the Torsion and Rings columns. '-' means no outliers of that kind were identified.

Mol	Type	Chain	Res	Link	Chirals	Torsions	Rings
2	MLY	B	36	2	-	0/8/9/11	-
3	MLZ	C	216	3	-	1/7/8/10	-
1	MLY	A	175	1	-	0/8/9/11	-
3	MLY	C	13	3	-	2/8/9/11	-
2	MLY	B	14	2	-	2/8/9/11	-
3	MLY	C	53	3	-	0/8/9/11	-
2	MLY	B	53	2	-	2/8/9/11	-
1	MLY	A	53	1	-	0/8/9/11	-
1	MLY	A	216	1	-	0/8/9/11	-
2	MLY	B	13	2	-	0/8/9/11	-
3	MLY	C	190	3	-	0/8/9/11	-
2	MLY	B	190	2	-	3/8/9/11	-

There are no bond length outliers.

All (5) bond angle outliers are listed below:

Mol	Chain	Res	Type	Atoms	Z	Observed(°)	Ideal(°)
3	C	53	MLY	CD-CG-CB	-2.95	103.18	113.62
1	A	53	MLY	CD-CG-CB	-2.61	104.38	113.62
3	C	216	MLZ	CM-NZ-CE	2.42	118.94	111.95
2	B	53	MLY	CD-CE-NZ	-2.04	108.27	113.79
1	A	53	MLY	CD-CE-NZ	-2.00	108.36	113.79

There are no chirality outliers.

All (10) torsion outliers are listed below:

Mol	Chain	Res	Type	Atoms
3	C	13	MLY	CD-CE-NZ-CH2
2	B	14	MLY	CD-CE-NZ-CH2
3	C	13	MLY	CD-CE-NZ-CH1
2	B	190	MLY	CD-CE-NZ-CH2
2	B	14	MLY	CD-CE-NZ-CH1
2	B	190	MLY	CD-CE-NZ-CH1
3	C	216	MLZ	CA-CB-CG-CD
2	B	53	MLY	CE-CD-CG-CB
2	B	53	MLY	CA-CB-CG-CD
2	B	190	MLY	CE-CD-CG-CB

There are no ring outliers.

3 monomers are involved in 3 short contacts:

Mol	Chain	Res	Type	Clashes	Symm-Clashes
3	C	216	MLZ	1	0
3	C	190	MLY	1	0
2	B	190	MLY	1	0

## 5.5 Carbohydrates [i](#)

There are no carbohydrates in this entry.

## 5.6 Ligand geometry [i](#)

2 ligands are modelled in this entry.

In the following table, the Counts columns list the number of bonds (or angles) for which Mogul statistics could be retrieved, the number of bonds (or angles) that are observed in the model and the number of bonds (or angles) that are defined in the Chemical Component Dictionary. The

Link column lists molecule types, if any, to which the group is linked. The Z score for a bond length (or angle) is the number of standard deviations the observed value is removed from the expected value. A bond length (or angle) with  $|Z| > 2$  is considered an outlier worth inspection. RMSZ is the root-mean-square of all Z scores of the bond lengths (or angles).

Mol	Type	Chain	Res	Link	Bond lengths			Bond angles		
					Counts	RMSZ	# Z  > 2	Counts	RMSZ	# Z  > 2
4	PEG	B	301	-	6,6,6	0.65	0	5,5,5	0.58	0
5	PG4	C	301	-	12,12,12	0.55	0	11,11,11	0.25	0

In the following table, the Chirals column lists the number of chiral outliers, the number of chiral centers analysed, the number of these observed in the model and the number defined in the Chemical Component Dictionary. Similar counts are reported in the Torsion and Rings columns. '-' means no outliers of that kind were identified.

Mol	Type	Chain	Res	Link	Chirals	Torsions	Rings
4	PEG	B	301	-	-	2/4/4/4	-
5	PG4	C	301	-	-	6/10/10/10	-

There are no bond length outliers.

There are no bond angle outliers.

There are no chirality outliers.

All (8) torsion outliers are listed below:

Mol	Chain	Res	Type	Atoms
4	B	301	PEG	O1-C1-C2-O2
5	C	301	PG4	O1-C1-C2-O2
5	C	301	PG4	O2-C3-C4-O3
5	C	301	PG4	C5-C6-O4-C7
5	C	301	PG4	C3-C4-O3-C5
5	C	301	PG4	C8-C7-O4-C6
4	B	301	PEG	C4-C3-O2-C2
5	C	301	PG4	C1-C2-O2-C3

There are no ring outliers.

No monomer is involved in short contacts.

## 5.7 Other polymers

There are no such residues in this entry.

## 5.8 Polymer linkage issues

There are no chain breaks in this entry.

## 6 Fit of model and data [i](#)

### 6.1 Protein, DNA and RNA chains [i](#)

In the following table, the column labelled ‘#RSRZ> 2’ contains the number (and percentage) of RSRZ outliers, followed by percent RSRZ outliers for the chain as percentile scores relative to all X-ray entries and entries of similar resolution. The OWAB column contains the minimum, median, 95<sup>th</sup> percentile and maximum values of the occupancy-weighted average B-factor per residue. The column labelled ‘Q< 0.9’ lists the number of (and percentage) of residues with an average occupancy less than 0.9.

Mol	Chain	Analysed	<RSRZ>	#RSRZ>2	OWAB(Å <sup>2</sup> )	Q<0.9
1	A	212/225 (94%)	-0.17	9 (4%) 36 42	17, 27, 46, 66	0
2	B	207/225 (92%)	-0.34	4 (1%) 66 74	15, 23, 43, 61	0
3	C	209/225 (92%)	-0.41	3 (1%) 75 82	16, 25, 45, 64	0
All	All	628/675 (93%)	-0.31	16 (2%) 57 63	15, 25, 45, 66	0

All (16) RSRZ outliers are listed below:

Mol	Chain	Res	Type	RSRZ
1	A	221	VAL	8.0
1	A	0	ALA	3.9
1	A	2	ASP	3.4
3	C	220	LEU	3.4
2	B	217	LEU	3.0
1	A	219	ALA	3.0
1	A	80	ASN	2.9
1	A	95	TYR	2.9
3	C	219	ALA	2.8
1	A	220	LEU	2.7
2	B	219	ALA	2.4
2	B	218	ASP	2.3
1	A	104	ILE	2.2
3	C	218	ASP	2.2
1	A	105	ASP	2.1
2	B	27[A]	GLU	2.1

### 6.2 Non-standard residues in protein, DNA, RNA chains [i](#)

In the following table, the Atoms column lists the number of modelled atoms in the group and the number defined in the chemical component dictionary. The B-factors column lists the minimum, median, 95<sup>th</sup> percentile and maximum values of B factors of atoms in the group. The column



labelled 'Q< 0.9' lists the number of atoms with occupancy less than 0.9.

Mol	Type	Chain	Res	Atoms	RSCC	RSR	B-factors( $\text{\AA}^2$ )	Q<0.9
1	MLY	A	175	11/12	0.92	0.26	28,32,38,40	0
3	MLZ	C	216	10/11	0.92	0.10	28,37,42,46	0
2	MLY	B	14	11/12	0.94	0.09	24,34,49,53	0
1	MLY	A	216	11/12	0.94	0.10	29,32,39,39	0
2	MLY	B	36	11/12	0.95	0.11	16,19,34,34	0
3	MLY	C	190	11/12	0.95	0.10	22,24,38,40	0
2	MLY	B	190	11/12	0.95	0.08	20,23,41,41	0
2	MLY	B	13	11/12	0.97	0.06	25,27,37,39	0
2	MLY	B	53	11/12	0.97	0.06	19,25,39,40	0
1	MLY	A	53	11/12	0.97	0.08	23,27,37,39	0
3	MLY	C	53	11/12	0.98	0.06	21,24,32,33	0
3	MLY	C	13	11/12	0.98	0.06	27,31,43,46	0

### 6.3 Carbohydrates [i](#)

There are no carbohydrates in this entry.

### 6.4 Ligands [i](#)

In the following table, the Atoms column lists the number of modelled atoms in the group and the number defined in the chemical component dictionary. The B-factors column lists the minimum, median, 95<sup>th</sup> percentile and maximum values of B factors of atoms in the group. The column labelled 'Q< 0.9' lists the number of atoms with occupancy less than 0.9.

Mol	Type	Chain	Res	Atoms	RSCC	RSR	B-factors( $\text{\AA}^2$ )	Q<0.9
4	PEG	B	301	7/7	0.88	0.15	32,40,49,53	0
5	PG4	C	301	13/13	0.90	0.18	42,52,59,62	0

### 6.5 Other polymers [i](#)

There are no such residues in this entry.