



Full wwPDB X-ray Structure Validation Report ⓘ

Sep 9, 2023 – 08:50 PM EDT

PDB ID : 4IH3
Title : 2.5 Angstroms X-ray crystal structure of of human 2-amino-3-carboxymuconate-6-semialdehyde decarboxylase in complex with dipicolinic acid
Authors : Huo, L.; Liu, A.
Deposited on : 2012-12-18
Resolution : 2.49 Å(reported)

This is a Full wwPDB X-ray Structure Validation Report for a publicly released PDB entry.

We welcome your comments at validation@mail.wwpdb.org

A user guide is available at

<https://www.wwpdb.org/validation/2017/XrayValidationReportHelp>

with specific help available everywhere you see the ⓘ symbol.

The types of validation reports are described at

<http://www.wwpdb.org/validation/2017/FAQs#types>.

The following versions of software and data (see [references ⓘ](#)) were used in the production of this report:

MolProbity : 4.02b-467
Mogul : 1.8.5 (274361), CSD as541be (2020)
Xtriage (Phenix) : 1.13
EDS : 2.35.1
Percentile statistics : 20191225.v01 (using entries in the PDB archive December 25th 2019)
Refmac : 5.8.0158
CCP4 : 7.0.044 (Gargrove)
Ideal geometry (proteins) : Engh & Huber (2001)
Ideal geometry (DNA, RNA) : Parkinson et al. (1996)
Validation Pipeline (wwPDB-VP) : 2.35.1

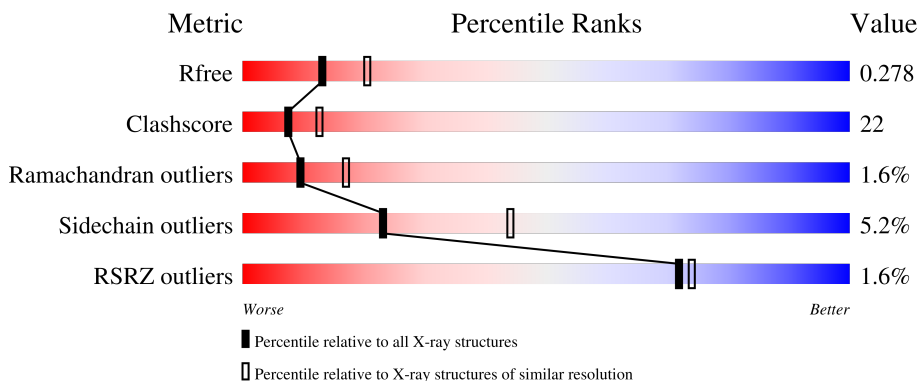
1 Overall quality at a glance i

The following experimental techniques were used to determine the structure:

X-RAY DIFFRACTION

The reported resolution of this entry is 2.49 Å.

Percentile scores (ranging between 0-100) for global validation metrics of the entry are shown in the following graphic. The table shows the number of entries on which the scores are based.



Metric	Whole archive (#Entries)	Similar resolution (#Entries, resolution range(Å))
R_{free}	130704	4661 (2.50-2.50)
Clashscore	141614	5346 (2.50-2.50)
Ramachandran outliers	138981	5231 (2.50-2.50)
Sidechain outliers	138945	5233 (2.50-2.50)
RSRZ outliers	127900	4559 (2.50-2.50)

The table below summarises the geometric issues observed across the polymeric chains and their fit to the electron density. The red, orange, yellow and green segments of the lower bar indicate the fraction of residues that contain outliers for ≥ 3 , 2, 1 and 0 types of geometric quality criteria respectively. A grey segment represents the fraction of residues that are not modelled. The numeric value for each fraction is indicated below the corresponding segment, with a dot representing fractions $\leq 5\%$. The upper red bar (where present) indicates the fraction of residues that have poor fit to the electron density. The numeric value is given above the bar.

Mol	Chain	Length	Quality of chain
1	A	332	<div style="display: flex; align-items: center;"> <div style="width: 20px; height: 10px; background-color: red; margin-right: 5px;"></div> <div style="width: 100%; height: 15px; background: linear-gradient(to right, red 2%, orange 2%, yellow 61%, green 61%, green 97%, yellow 97%, orange 97%, red 97%);"></div> <div style="margin-left: 5px;">%</div> </div> <div style="display: flex; justify-content: space-around; margin-top: 5px;"> 61% 36% .. </div>
1	B	332	<div style="display: flex; align-items: center;"> <div style="width: 20px; height: 10px; background-color: red; margin-right: 5px;"></div> <div style="width: 100%; height: 15px; background: linear-gradient(to right, red 2%, orange 2%, yellow 70%, green 70%, green 97%, yellow 97%, orange 97%, red 97%);"></div> <div style="margin-left: 5px;">%</div> </div> <div style="display: flex; justify-content: space-around; margin-top: 5px;"> 70% 28% . </div>
1	C	332	<div style="display: flex; align-items: center;"> <div style="width: 20px; height: 10px; background-color: red; margin-right: 5px;"></div> <div style="width: 100%; height: 15px; background: linear-gradient(to right, red 2%, orange 2%, yellow 65%, green 65%, green 97%, yellow 97%, orange 97%, red 97%);"></div> <div style="margin-left: 5px;">%</div> </div> <div style="display: flex; justify-content: space-around; margin-top: 5px;"> 65% 32% . </div>
1	D	332	<div style="display: flex; align-items: center;"> <div style="width: 20px; height: 10px; background-color: red; margin-right: 5px;"></div> <div style="width: 100%; height: 15px; background: linear-gradient(to right, red 2%, orange 2%, yellow 65%, green 65%, green 97%, yellow 97%, orange 97%, red 97%);"></div> <div style="margin-left: 5px;">%</div> </div> <div style="display: flex; justify-content: space-around; margin-top: 5px;"> 65% 33% . </div>
1	E	332	<div style="display: flex; align-items: center;"> <div style="width: 20px; height: 10px; background-color: red; margin-right: 5px;"></div> <div style="width: 100%; height: 15px; background: linear-gradient(to right, red 2%, orange 2%, yellow 63%, green 63%, green 97%, yellow 97%, orange 97%, red 97%);"></div> <div style="margin-left: 5px;">%</div> </div> <div style="display: flex; justify-content: space-around; margin-top: 5px;"> 63% 36% . </div>

Continued on next page...

Continued from previous page...

Mol	Chain	Length	Quality of chain
1	F	332	

The following table lists non-polymeric compounds, carbohydrate monomers and non-standard residues in protein, DNA, RNA chains that are outliers for geometric or electron-density-fit criteria:

Mol	Type	Chain	Res	Chirality	Geometry	Clashes	Electron density
3	PDC	A	402	-	-	X	-
3	PDC	B	402	-	X	X	-
3	PDC	C	402	-	X	X	-
3	PDC	D	402	-	X	X	-
3	PDC	E	402	-	X	-	-
3	PDC	F	402	-	-	X	-

2 Entry composition [i](#)

There are 4 unique types of molecules in this entry. The entry contains 16174 atoms, of which 0 are hydrogens and 0 are deuteriums.

In the tables below, the ZeroOcc column contains the number of atoms modelled with zero occupancy, the AltConf column contains the number of residues with at least one atom in alternate conformation and the Trace column contains the number of residues modelled with at most 2 atoms.

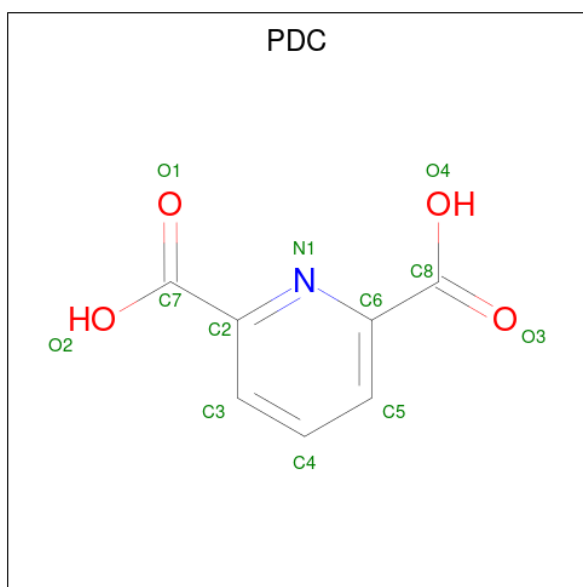
- Molecule 1 is a protein called 2-amino-3-carboxymuconate-6-semialdehyde decarboxylase.

Mol	Chain	Residues	Atoms					ZeroOcc	AltConf	Trace
			Total	C	N	O	S			
1	A	332	2635	1703	443	468	21	0	0	0
1	B	332	2635	1703	443	468	21	0	0	0
1	C	332	2635	1703	443	468	21	0	0	0
1	D	332	2635	1703	443	468	21	0	0	0
1	E	332	2635	1703	443	468	21	0	0	0
1	F	332	2635	1703	443	468	21	0	0	0

- Molecule 2 is ZINC ION (three-letter code: ZN) (formula: Zn).

Mol	Chain	Residues	Atoms		ZeroOcc	AltConf
2	A	1	Total	Zn	0	0
			1	1		
2	B	1	Total	Zn	0	0
			1	1		
2	C	1	Total	Zn	0	0
			1	1		
2	D	1	Total	Zn	0	0
			1	1		
2	E	1	Total	Zn	0	0
			1	1		
2	F	1	Total	Zn	0	0
			1	1		

- Molecule 3 is PYRIDINE-2,6-DICARBOXYLIC ACID (three-letter code: PDC) (formula: C₇H₅NO₄).



Mol	Chain	Residues	Atoms				ZeroOcc	AltConf
			Total	C	N	O		
3	A	1	Total 12	C 7	N 1	O 4	0	0
3	B	1	Total 12	C 7	N 1	O 4	0	0
3	C	1	Total 12	C 7	N 1	O 4	0	0
3	D	1	Total 12	C 7	N 1	O 4	0	0
3	E	1	Total 12	C 7	N 1	O 4	0	0
3	F	1	Total 12	C 7	N 1	O 4	0	0

- Molecule 4 is water.

Mol	Chain	Residues	Atoms		ZeroOcc	AltConf
			Total	O		
4	A	59	Total 59	O 59	0	0
4	B	77	Total 77	O 77	0	0
4	C	45	Total 45	O 45	0	0
4	D	57	Total 57	O 57	0	0
4	E	25	Total 25	O 25	0	0
4	F	23	Total 23	O 23	0	0

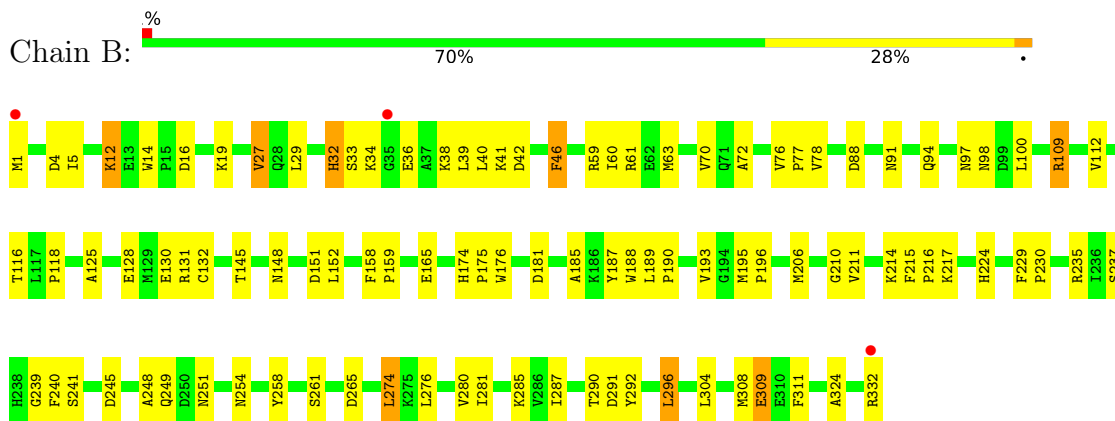
3 Residue-property plots

These plots are drawn for all protein, RNA, DNA and oligosaccharide chains in the entry. The first graphic for a chain summarises the proportions of the various outlier classes displayed in the second graphic. The second graphic shows the sequence view annotated by issues in geometry and electron density. Residues are color-coded according to the number of geometric quality criteria for which they contain at least one outlier: green = 0, yellow = 1, orange = 2 and red = 3 or more. A red dot above a residue indicates a poor fit to the electron density ($RSRZ > 2$). Stretches of 2 or more consecutive residues without any outlier are shown as a green connector. Residues present in the sample, but not in the model, are shown in grey.

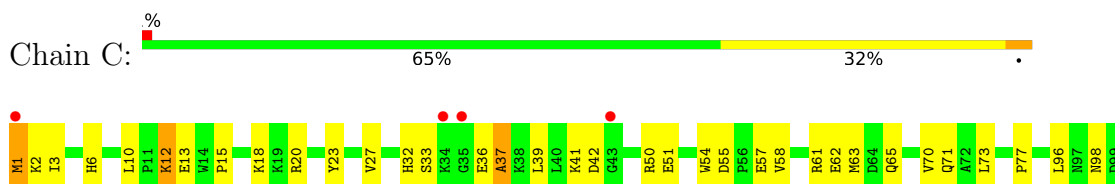
- Molecule 1: 2-amino-3-carboxymuconate-6-semialdehyde decarboxylase



- Molecule 1: 2-amino-3-carboxymuconate-6-semialdehyde decarboxylase

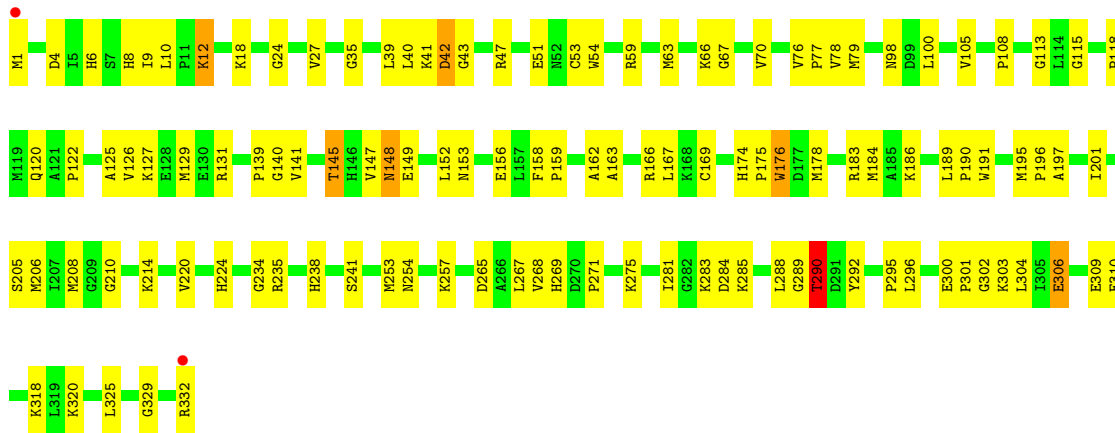


- Molecule 1: 2-amino-3-carboxymuconate-6-semialdehyde decarboxylase

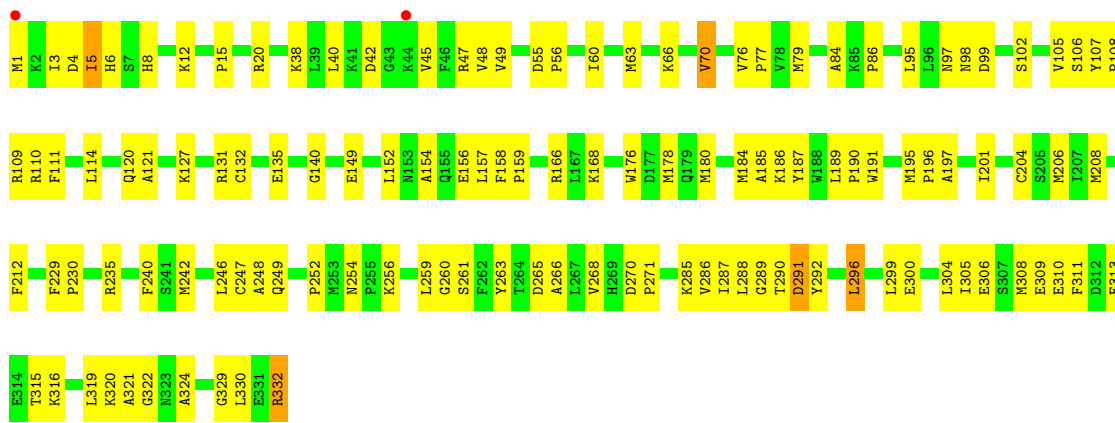




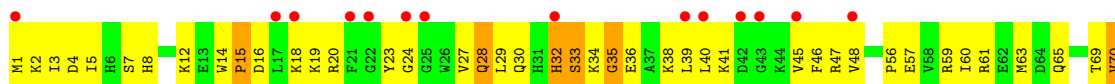
- Molecule 1: 2-amino-3-carboxymuconate-6-semialdehyde decarboxylase

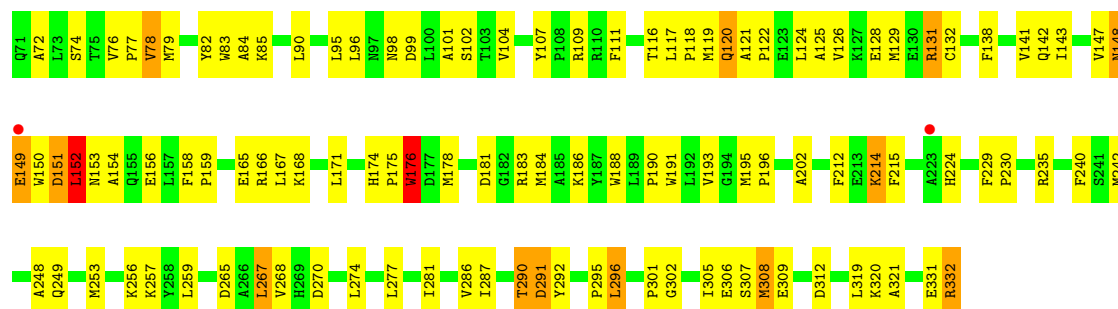


- Molecule 1: 2-amino-3-carboxymuconate-6-semialdehyde decarboxylase



- Molecule 1: 2-amino-3-carboxymuconate-6-semialdehyde decarboxylase





4 Data and refinement statistics

Property	Value	Source
Space group	P 21 21 21	Depositor
Cell constants a, b, c, α , β , γ	88.37Å 100.66Å 233.12Å 90.00° 90.00° 90.00°	Depositor
Resolution (Å)	35.21 – 2.49 35.21 – 2.49	Depositor EDS
% Data completeness (in resolution range)	75.2 (35.21-2.49) 72.9 (35.21-2.49)	Depositor EDS
R_{merge}	0.10	Depositor
R_{sym}	(Not available)	Depositor
$\langle I/\sigma(I) \rangle$ ¹	1.84 (at 2.48Å)	Xtrriage
Refinement program	PHENIX 1.7.3_928	Depositor
R, R_{free}	0.198 , 0.283 0.192 , 0.278	Depositor DCC
R_{free} test set	2809 reflections (5.09%)	wwPDB-VP
Wilson B-factor (Å ²)	28.6	Xtrriage
Anisotropy	0.512	Xtrriage
Bulk solvent k_{sol} (e/Å ³), B_{sol} (Å ²)	0.33 , 35.2	EDS
L-test for twinning ²	$\langle L \rangle = 0.49$, $\langle L^2 \rangle = 0.32$	Xtrriage
Estimated twinning fraction	No twinning to report.	Xtrriage
F_o, F_c correlation	0.93	EDS
Total number of atoms	16174	wwPDB-VP
Average B, all atoms (Å ²)	33.0	wwPDB-VP

Xtrriage's analysis on translational NCS is as follows: *The largest off-origin peak in the Patterson function is 7.74% of the height of the origin peak. No significant pseudotranslation is detected.*

¹Intensities estimated from amplitudes.

²Theoretical values of $\langle |L| \rangle$, $\langle L^2 \rangle$ for acentric reflections are 0.5, 0.333 respectively for untwinned datasets, and 0.375, 0.2 for perfectly twinned datasets.

5 Model quality

5.1 Standard geometry

Bond lengths and bond angles in the following residue types are not validated in this section: ZN, PDC

The Z score for a bond length (or angle) is the number of standard deviations the observed value is removed from the expected value. A bond length (or angle) with $|Z| > 5$ is considered an outlier worth inspection. RMSZ is the root-mean-square of all Z scores of the bond lengths (or angles).

Mol	Chain	Bond lengths		Bond angles	
		RMSZ	# Z >5	RMSZ	# Z >5
1	A	0.43	0/2706	0.57	0/3662
1	B	0.47	0/2706	0.59	0/3662
1	C	0.45	0/2706	0.59	0/3662
1	D	0.42	0/2706	0.56	0/3662
1	E	0.42	0/2706	0.56	0/3662
1	F	0.40	0/2706	0.54	0/3662
All	All	0.43	0/16236	0.57	0/21972

There are no bond length outliers.

There are no bond angle outliers.

There are no chirality outliers.

There are no planarity outliers.

5.2 Too-close contacts

In the following table, the Non-H and H(model) columns list the number of non-hydrogen atoms and hydrogen atoms in the chain respectively. The H(added) column lists the number of hydrogen atoms added and optimized by MolProbity. The Clashes column lists the number of clashes within the asymmetric unit, whereas Symm-Clashes lists symmetry-related clashes.

Mol	Chain	Non-H	H(model)	H(added)	Clashes	Symm-Clashes
1	A	2635	0	2643	119	0
1	B	2635	0	2643	107	0
1	C	2635	0	2643	104	0
1	D	2635	0	2643	118	0
1	E	2635	0	2643	110	0
1	F	2635	0	2643	167	0
2	A	1	0	0	0	0

Continued on next page...

Continued from previous page...

Mol	Chain	Non-H	H(model)	H(added)	Clashes	Symm-Clashes
2	B	1	0	0	0	0
2	C	1	0	0	0	0
2	D	1	0	0	0	0
2	E	1	0	0	0	0
2	F	1	0	0	0	0
3	A	12	0	2	7	0
3	B	12	0	3	9	0
3	C	12	0	3	5	0
3	D	12	0	2	12	0
3	E	12	0	3	1	0
3	F	12	0	3	7	0
4	A	59	0	0	16	0
4	B	77	0	0	8	0
4	C	45	0	0	6	0
4	D	57	0	0	12	0
4	E	25	0	0	11	0
4	F	23	0	0	6	0
All	All	16174	0	15874	701	0

The all-atom clashscore is defined as the number of clashes found per 1000 atoms (including hydrogen atoms). The all-atom clashscore for this structure is 22.

All (701) close contacts within the same asymmetric unit are listed below, sorted by their clash magnitude.

Atom-1	Atom-2	Interatomic distance (Å)	Clash overlap (Å)
1:B:60:ILE:HD13	1:B:63:MET:CE	1.71	1.19
1:D:254:ASN:HB3	1:D:257:LYS:HE3	1.25	1.15
1:B:60:ILE:HA	1:B:63:MET:HE2	1.23	1.13
1:F:1:MET:HB3	1:F:320:LYS:HD3	1.29	1.13
1:F:40:LEU:HD23	1:F:45:VAL:HG22	1.27	1.12
1:B:187:TYR:HB3	1:C:208:MET:HE1	1.27	1.11
1:B:175:PRO:HG2	1:B:195:MET:HE3	1.08	1.08
1:B:60:ILE:HD13	1:B:63:MET:HE1	1.31	1.07
1:B:60:ILE:HA	1:B:63:MET:CE	1.86	1.04
1:F:61:ARG:NH2	4:F:523:HOH:O	1.90	1.04
1:F:290:THR:HG22	1:F:292:TYR:H	1.20	1.03
1:A:98:ASN:OD1	1:A:131:ARG:NH2	1.93	1.01
1:B:109:ARG:HG3	1:B:109:ARG:HH11	1.23	1.01
1:F:77:PRO:HG2	3:F:402:PDC:H3	1.41	1.01
1:D:290:THR:HG22	1:D:292:TYR:H	1.28	0.97
1:D:253:MET:HG3	1:D:257:LYS:HD2	1.45	0.95

Continued on next page...

Continued from previous page...

Atom-1	Atom-2	Interatomic distance (Å)	Clash overlap (Å)
1:D:254:ASN:CB	1:D:257:LYS:HE3	1.96	0.95
1:D:283:LYS:NZ	4:D:503:HOH:O	1.96	0.94
1:C:215:PHE:O	4:C:515:HOH:O	1.85	0.94
1:D:98:ASN:OD1	1:D:131:ARG:NH2	1.98	0.94
1:B:187:TYR:HB3	1:C:208:MET:CE	1.95	0.94
1:D:54:TRP:NE1	4:D:515:HOH:O	1.92	0.94
1:C:253:MET:HG3	1:C:257:LYS:HD3	1.51	0.93
1:E:289:GLY:O	4:E:516:HOH:O	1.85	0.92
1:B:175:PRO:HG2	1:B:195:MET:CE	1.98	0.92
1:C:1:MET:HB3	1:C:320:LYS:HD2	1.49	0.92
1:C:229:PHE:HB3	1:C:230:PRO:HD3	1.49	0.91
1:F:40:LEU:HD23	1:F:45:VAL:CG2	2.00	0.91
1:D:42:ASP:O	4:D:509:HOH:O	1.88	0.91
1:A:54:TRP:NE1	4:A:526:HOH:O	2.02	0.91
1:F:4:ASP:OD2	1:F:290:THR:HB	1.71	0.91
1:C:98:ASN:OD1	1:C:131:ARG:NH2	2.04	0.91
1:D:12:LYS:HD3	1:D:12:LYS:N	1.87	0.90
1:E:63:MET:HE1	1:E:111:PHE:HE1	1.35	0.89
1:A:260:GLY:N	4:A:546:HOH:O	1.96	0.89
1:B:60:ILE:HD13	1:B:63:MET:HE3	1.55	0.88
1:A:101:ALA:O	4:A:519:HOH:O	1.90	0.88
1:A:30:GLN:NE2	1:A:40:LEU:HD11	1.88	0.87
1:C:296:LEU:HD13	1:C:296:LEU:O	1.76	0.86
1:E:290:THR:HG22	1:E:292:TYR:N	1.90	0.85
1:F:41:LYS:HB2	1:F:46:PHE:CE2	2.11	0.85
1:D:210:GLY:O	1:D:214:LYS:HD3	1.76	0.84
1:B:175:PRO:CG	1:B:195:MET:HE3	2.02	0.84
1:E:63:MET:HE1	1:E:111:PHE:CE1	2.14	0.82
1:C:77:PRO:HD2	3:C:402:PDC:H3	1.61	0.82
1:A:311:PHE:HA	4:A:538:HOH:O	1.79	0.82
1:A:310:GLU:OE2	4:A:522:HOH:O	1.98	0.81
1:A:252:PRO:HG2	1:A:253:MET:SD	2.19	0.81
1:F:33:SER:HB3	1:F:36:GLU:HB2	1.62	0.81
1:D:290:THR:HG22	1:D:292:TYR:N	1.96	0.81
1:F:76:VAL:HG12	1:F:78:VAL:HG12	1.63	0.80
1:C:12:LYS:HD3	1:C:12:LYS:H	1.47	0.79
1:E:290:THR:HG22	1:E:292:TYR:H	1.45	0.79
1:D:140:GLY:HA2	1:D:169:CYS:SG	2.22	0.79
1:F:290:THR:HG22	1:F:292:TYR:N	1.97	0.79
1:A:129:MET:HG2	1:A:167:LEU:HD13	1.64	0.79
1:B:77:PRO:CG	3:B:402:PDC:H3	2.12	0.78

Continued on next page...

Continued from previous page...

Atom-1	Atom-2	Interatomic distance (Å)	Clash overlap (Å)
1:F:90:LEU:HD22	1:F:124:LEU:HD22	1.64	0.77
1:E:86:PRO:HB3	1:E:121:ALA:HB2	1.67	0.77
1:B:77:PRO:HD2	3:B:402:PDC:H3	1.66	0.77
1:A:12:LYS:HB3	1:A:54:TRP:HE3	1.50	0.77
1:A:155:GLN:HA	1:A:158:PHE:CD1	2.21	0.76
1:D:234:GLY:O	4:D:524:HOH:O	2.03	0.76
1:B:4:ASP:OD2	1:B:290:THR:HB	1.86	0.76
1:A:63:MET:HE1	1:A:111:PHE:HE1	1.51	0.76
1:F:76:VAL:CG1	1:F:78:VAL:HG12	2.16	0.76
1:A:290:THR:HG22	1:A:292:TYR:N	2.00	0.75
1:E:4:ASP:OD2	1:E:290:THR:HB	1.87	0.75
1:B:60:ILE:CA	1:B:63:MET:HE2	2.13	0.75
1:C:3:ILE:HG23	1:C:70:VAL:HG22	1.67	0.75
1:A:12:LYS:HB3	1:A:54:TRP:CE3	2.22	0.75
1:C:32:HIS:NE2	1:C:36:GLU:HB3	2.02	0.75
1:C:1:MET:CB	1:C:320:LYS:HD2	2.16	0.75
1:D:66:LYS:HE2	1:D:300:GLU:OE1	1.86	0.75
1:B:77:PRO:HG2	3:B:402:PDC:H3	1.68	0.74
1:A:291:ASP:CG	3:A:402:PDC:H3	2.07	0.74
1:F:90:LEU:CD2	1:F:124:LEU:HD22	2.17	0.74
1:E:102:SER:O	1:E:105:VAL:HG12	1.88	0.73
1:A:291:ASP:OD2	3:A:402:PDC:H3	1.87	0.73
1:A:118:PRO:HD2	1:A:125:ALA:HA	1.70	0.73
1:B:12:LYS:CD	1:B:12:LYS:H	2.02	0.73
1:D:35:GLY:HA2	1:D:51:GLU:HG3	1.68	0.73
1:A:139:PRO:O	4:A:549:HOH:O	2.06	0.72
1:C:12:LYS:HD3	1:C:12:LYS:N	2.04	0.72
1:B:77:PRO:CD	3:B:402:PDC:H3	2.20	0.72
1:F:69:THR:HG22	1:F:70:VAL:HG12	1.71	0.72
1:F:175:PRO:O	1:F:176:TRP:HB3	1.90	0.72
1:E:305:ILE:HG23	1:E:319:LEU:HD12	1.70	0.72
1:D:210:GLY:O	1:D:214:LYS:CD	2.38	0.72
1:F:253:MET:HG3	1:F:257:LYS:HD2	1.72	0.72
1:A:290:THR:HG22	1:A:292:TYR:H	1.53	0.71
1:D:47:ARG:NH1	3:D:402:PDC:O2	2.24	0.71
1:E:149:GLU:O	1:E:149:GLU:HG3	1.90	0.71
1:D:12:LYS:N	1:D:12:LYS:CD	2.54	0.71
1:F:331:GLU:O	4:F:522:HOH:O	2.07	0.71
1:A:290:THR:CG2	1:A:292:TYR:HB2	2.21	0.71
1:C:2:LYS:CB	1:C:321:ALA:HB2	2.21	0.71
1:D:47:ARG:HH12	3:D:402:PDC:C7	2.04	0.70

Continued on next page...

Continued from previous page...

Atom-1	Atom-2	Interatomic distance (Å)	Clash overlap (Å)
1:B:109:ARG:HG3	1:B:109:ARG:NH1	1.91	0.70
1:F:41:LYS:HB2	1:F:46:PHE:HE2	1.57	0.70
1:A:229:PHE:HB3	1:A:230:PRO:HD3	1.73	0.69
1:B:59:ARG:O	1:B:63:MET:HG3	1.93	0.69
1:D:254:ASN:H	1:D:257:LYS:HZ1	1.39	0.69
1:F:33:SER:O	1:F:35:GLY:N	2.26	0.69
1:D:163:ALA:O	1:D:167:LEU:HG	1.93	0.69
1:E:290:THR:CG2	1:E:292:TYR:HB2	2.23	0.69
1:E:308:MET:HG3	1:E:311:PHE:CE2	2.28	0.69
1:D:254:ASN:H	1:D:257:LYS:NZ	1.91	0.68
1:A:77:PRO:HG2	3:A:402:PDC:H5	1.75	0.68
1:A:86:PRO:HB3	1:A:121:ALA:HB2	1.74	0.68
1:F:27:VAL:C	1:F:28:GLN:HG2	2.11	0.68
1:E:98:ASN:OD1	1:E:131:ARG:NH2	2.26	0.68
1:B:109:ARG:HH11	1:B:109:ARG:CG	2.05	0.68
1:A:258:TYR:O	1:A:261:SER:HB2	1.93	0.68
1:F:150:TRP:CZ2	1:F:156:GLU:HG2	2.28	0.68
1:E:290:THR:HG21	1:E:292:TYR:HB2	1.75	0.68
1:A:12:LYS:CB	1:A:54:TRP:CE3	2.77	0.67
1:D:183:ARG:NH1	4:D:525:HOH:O	2.26	0.67
1:C:73:LEU:HD11	1:C:111:PHE:CD1	2.30	0.67
1:F:214:LYS:HD2	1:F:214:LYS:N	2.08	0.67
1:D:39:LEU:O	1:D:40:LEU:HD23	1.95	0.67
1:B:274:LEU:O	1:B:274:LEU:HD12	1.94	0.67
1:C:36:GLU:O	1:C:37:ALA:HB2	1.95	0.67
1:F:38:LYS:HB3	1:F:45:VAL:HG11	1.77	0.66
1:E:190:PRO:HB2	1:E:191:TRP:CE3	2.31	0.66
1:D:12:LYS:CD	1:D:12:LYS:H	2.08	0.66
1:B:174:HIS:CE1	3:B:402:PDC:C4	2.79	0.66
1:C:229:PHE:HB3	1:C:230:PRO:CD	2.23	0.66
1:B:61:ARG:NE	4:B:569:HOH:O	2.08	0.66
1:C:281:ILE:HG22	1:C:285:LYS:HB2	1.78	0.66
1:A:195:MET:CE	1:A:224:HIS:NE2	2.59	0.65
1:C:156:GLU:N	1:C:156:GLU:OE1	2.26	0.65
1:D:77:PRO:HG2	3:D:402:PDC:H4	1.79	0.65
1:F:122:PRO:O	1:F:126:VAL:HG23	1.97	0.65
1:F:129:MET:HG2	1:F:167:LEU:CD1	2.27	0.65
1:E:316:LYS:O	1:E:320:LYS:HG3	1.96	0.65
1:F:40:LEU:CD2	1:F:45:VAL:CG2	2.75	0.65
1:D:77:PRO:HG2	3:D:402:PDC:C4	2.26	0.65
1:C:50:ARG:HG3	4:C:537:HOH:O	1.96	0.65

Continued on next page...

Continued from previous page...

Atom-1	Atom-2	Interatomic distance (Å)	Clash overlap (Å)
1:A:249:GLN:OE1	4:A:550:HOH:O	2.15	0.65
1:B:187:TYR:CB	1:C:208:MET:HE1	2.16	0.65
1:C:15:PRO:HG2	1:C:20:ARG:HH21	1.60	0.65
1:E:191:TRP:HA	1:E:195:MET:HG3	1.79	0.65
1:C:12:LYS:NZ	4:C:519:HOH:O	2.03	0.64
1:E:261:SER:O	4:E:504:HOH:O	2.14	0.64
1:F:174:HIS:CE1	3:F:402:PDC:H4	2.32	0.64
1:D:290:THR:CG2	1:D:292:TYR:HB2	2.27	0.64
1:F:40:LEU:CD2	1:F:45:VAL:HG22	2.18	0.64
1:F:16:ASP:OD2	1:F:19:LYS:HB3	1.97	0.64
1:A:32:HIS:ND1	1:A:38:LYS:HD2	2.13	0.64
1:B:206:MET:CE	1:B:211:VAL:HG11	2.28	0.64
1:D:78:VAL:HG22	1:D:78:VAL:O	1.97	0.64
1:E:66:LYS:NZ	1:E:300:GLU:OE2	2.24	0.64
1:F:90:LEU:HD12	1:F:90:LEU:O	1.98	0.64
1:F:175:PRO:HB2	1:F:195:MET:HG2	1.80	0.64
1:D:175:PRO:HG2	1:D:195:MET:HE3	1.80	0.64
1:C:1:MET:HG3	1:C:306:GLU:OE2	1.98	0.64
1:A:235:ARG:NH2	1:F:195:MET:HE2	2.13	0.63
1:B:72:ALA:HA	1:B:112:VAL:HG23	1.79	0.63
1:A:253:MET:SD	1:A:253:MET:N	2.71	0.63
1:D:1:MET:O	1:D:67:GLY:O	2.17	0.63
1:F:183:ARG:O	1:F:186:LYS:NZ	2.31	0.63
1:F:229:PHE:HB3	1:F:230:PRO:HD3	1.79	0.63
1:C:77:PRO:CD	3:C:402:PDC:H3	2.29	0.63
1:B:32:HIS:NE2	1:B:38:LYS:HE3	2.13	0.63
1:E:3:ILE:HG12	1:E:70:VAL:HG13	1.81	0.63
1:D:197:ALA:O	1:D:201:ILE:HG13	1.98	0.63
1:A:207:ILE:HG23	1:A:258:TYR:CD2	2.34	0.63
1:F:296:LEU:HB2	4:F:505:HOH:O	1.98	0.62
1:B:32:HIS:CD2	1:B:38:LYS:HE3	2.34	0.62
1:F:61:ARG:HH11	1:F:61:ARG:HB2	1.65	0.62
1:A:32:HIS:CG	1:A:33:SER:N	2.67	0.62
1:C:130:GLU:HG3	1:C:167:LEU:HD21	1.81	0.62
1:A:224:HIS:HE1	1:A:291:ASP:OD2	1.83	0.62
1:E:249:GLN:HG2	4:E:515:HOH:O	1.99	0.62
1:F:212:PHE:O	4:F:504:HOH:O	2.16	0.62
1:F:33:SER:C	1:F:35:GLY:H	2.02	0.62
1:B:287:ILE:HG23	1:B:324:ALA:HB2	1.82	0.62
1:A:155:GLN:O	1:A:158:PHE:HB2	2.00	0.61
1:D:208:MET:CE	1:E:187:TYR:HB3	2.30	0.61

Continued on next page...

Continued from previous page...

Atom-1	Atom-2	Interatomic distance (Å)	Clash overlap (Å)
1:D:59:ARG:O	1:D:63:MET:HB2	1.99	0.61
1:A:20:ARG:NH1	1:A:91:ASN:OD1	2.33	0.61
1:E:1:MET:O	1:E:1:MET:HG2	2.01	0.61
1:D:59:ARG:C	1:D:63:MET:HE3	2.20	0.61
1:E:308:MET:HB2	1:E:311:PHE:CD2	2.35	0.61
1:A:249:GLN:NE2	4:A:539:HOH:O	2.33	0.61
1:E:63:MET:CE	1:E:111:PHE:CE1	2.83	0.61
1:A:156:GLU:O	1:A:159:PRO:HD2	2.00	0.61
1:A:290:THR:HG21	1:A:292:TYR:HB2	1.81	0.61
1:D:290:THR:HG21	1:D:292:TYR:HB2	1.82	0.61
1:E:249:GLN:CG	4:E:515:HOH:O	2.48	0.61
1:A:90:LEU:O	1:A:94:GLN:HG3	2.01	0.61
1:A:224:HIS:HB2	4:A:513:HOH:O	2.00	0.61
1:D:169:CYS:O	4:D:528:HOH:O	2.16	0.61
1:A:42:ASP:HB2	4:A:542:HOH:O	2.00	0.61
1:A:32:HIS:CG	1:A:33:SER:H	2.18	0.60
1:A:123:GLU:HG3	1:A:124:LEU:N	2.17	0.60
1:A:260:GLY:CA	4:A:546:HOH:O	2.43	0.60
1:E:254:ASN:OD1	1:E:256:LYS:HB2	2.01	0.60
1:D:18:LYS:HD2	1:D:24:GLY:HA2	1.84	0.60
1:E:197:ALA:O	1:E:201:ILE:HD12	2.02	0.60
1:B:274:LEU:HD23	1:B:304:LEU:HG	1.83	0.60
1:A:63:MET:HE1	1:A:111:PHE:CE1	2.36	0.60
1:D:77:PRO:HD2	3:D:402:PDC:H3	1.83	0.60
1:D:288:LEU:HD12	1:D:289:GLY:N	2.16	0.60
1:F:61:ARG:NH1	1:F:61:ARG:CB	2.64	0.60
1:C:2:LYS:HB3	1:C:321:ALA:HB2	1.82	0.59
1:D:288:LEU:HD12	1:D:289:GLY:H	1.67	0.59
1:F:77:PRO:HD2	3:F:402:PDC:O2	2.03	0.59
1:D:145:THR:O	1:D:152:LEU:HD13	2.01	0.59
1:E:332:ARG:NE	4:E:522:HOH:O	2.35	0.59
1:F:193:VAL:C	1:F:196:PRO:HD2	2.23	0.59
1:A:140:GLY:HA2	1:A:169:CYS:SG	2.42	0.59
1:B:206:MET:HE2	1:B:211:VAL:HG11	1.85	0.59
1:B:290:THR:CG2	1:B:292:TYR:HB2	2.33	0.58
1:F:19:LYS:O	1:F:19:LYS:HG2	2.02	0.58
1:B:12:LYS:H	1:B:12:LYS:HD3	1.68	0.58
1:D:149:GLU:HG3	1:D:149:GLU:O	2.02	0.58
1:E:184:MET:O	1:E:190:PRO:HD3	2.03	0.58
1:F:1:MET:HG2	1:F:320:LYS:NZ	2.18	0.58
1:B:245:ASP:OD1	4:B:539:HOH:O	2.17	0.58

Continued on next page...

Continued from previous page...

Atom-1	Atom-2	Interatomic distance (Å)	Clash overlap (Å)
1:A:290:THR:HG22	1:A:292:TYR:HB2	1.85	0.58
1:B:159:PRO:O	4:B:548:HOH:O	2.17	0.58
1:E:195:MET:HB2	1:E:196:PRO:HD3	1.85	0.58
1:B:210:GLY:O	1:B:214:LYS:HD3	2.04	0.58
1:B:77:PRO:HG2	3:B:402:PDC:C3	2.33	0.58
1:A:286:VAL:HB	1:A:319:LEU:HD22	1.85	0.57
1:B:98:ASN:OD1	1:B:131:ARG:NH2	2.37	0.57
1:B:258:TYR:O	1:B:261:SER:HB2	2.04	0.57
1:D:195:MET:HB2	1:D:196:PRO:HD3	1.86	0.57
1:F:63:MET:HE1	1:F:111:PHE:HE1	1.68	0.57
1:C:275:LYS:HE3	1:C:311:PHE:HE1	1.67	0.57
1:E:266:ALA:HB2	1:E:286:VAL:CG1	2.34	0.57
1:B:189:LEU:N	1:B:190:PRO:CD	2.67	0.57
1:C:186:LYS:O	1:C:189:LEU:HG	2.04	0.57
1:D:303:LYS:HA	1:D:306:GLU:HG3	1.87	0.57
1:E:260:GLY:O	1:E:285:LYS:NZ	2.37	0.57
1:A:235:ARG:HH22	1:F:195:MET:CE	2.17	0.57
1:E:308:MET:CB	1:E:311:PHE:CD2	2.88	0.57
1:C:213:GLU:OE1	1:C:258:TYR:OH	2.10	0.57
1:D:1:MET:H3	1:D:320:LYS:HD2	1.68	0.57
1:F:147:VAL:O	1:F:148:ASN:HB2	2.05	0.57
1:F:151:ASP:O	1:F:153:ASN:N	2.38	0.57
1:F:195:MET:HE3	1:F:224:HIS:NE2	2.19	0.57
1:A:254:ASN:OD1	1:A:256:LYS:HB2	2.05	0.57
1:B:174:HIS:CE1	3:B:402:PDC:H4	2.35	0.57
1:F:56:PRO:O	1:F:60:ILE:HD13	2.05	0.57
1:A:195:MET:HE1	1:A:224:HIS:NE2	2.20	0.56
1:D:35:GLY:HA2	1:D:51:GLU:CG	2.33	0.56
1:F:61:ARG:CZ	1:F:61:ARG:HB3	2.35	0.56
1:F:302:GLY:O	1:F:306:GLU:HG3	2.05	0.56
1:C:129:MET:HG2	1:C:167:LEU:CD1	2.34	0.56
1:F:83:TRP:CZ3	1:F:84:ALA:HB2	2.40	0.56
1:F:78:VAL:HG22	1:F:78:VAL:O	2.04	0.56
1:F:174:HIS:CE1	3:F:402:PDC:C4	2.88	0.56
1:C:287:ILE:HG23	1:C:324:ALA:HB2	1.87	0.56
1:F:98:ASN:OD1	1:F:131:ARG:NH2	2.36	0.56
1:D:176:TRP:HE3	4:D:545:HOH:O	1.87	0.56
1:F:61:ARG:NH1	1:F:61:ARG:HB3	2.19	0.56
1:A:291:ASP:OD1	3:A:402:PDC:H3	2.05	0.56
1:B:77:PRO:HD2	3:B:402:PDC:C3	2.33	0.56
1:C:311:PHE:HA	4:C:524:HOH:O	2.04	0.56

Continued on next page...

Continued from previous page...

Atom-1	Atom-2	Interatomic distance (Å)	Clash overlap (Å)
1:A:195:MET:CE	1:A:224:HIS:CD2	2.89	0.56
1:B:241:SER:HA	4:B:546:HOH:O	2.04	0.56
1:F:331:GLU:HA	1:F:331:GLU:OE1	2.06	0.56
1:B:229:PHE:HB3	1:B:230:PRO:HD3	1.87	0.55
1:F:60:ILE:HD12	1:F:63:MET:HE3	1.86	0.55
1:C:12:LYS:H	1:C:12:LYS:CD	2.18	0.55
1:D:189:LEU:N	1:D:190:PRO:CD	2.68	0.55
1:D:304:LEU:O	1:D:304:LEU:HD12	2.05	0.55
1:E:288:LEU:HD13	1:E:305:ILE:HD12	1.87	0.55
1:D:105:VAL:O	1:D:108:PRO:HD3	2.06	0.55
1:D:176:TRP:HB2	4:D:545:HOH:O	2.05	0.55
1:D:268:VAL:O	1:D:269:HIS:HB2	2.05	0.55
1:B:237:SER:OG	1:B:254:ASN:OD1	2.20	0.55
1:C:61:ARG:O	1:C:65:GLN:HG3	2.06	0.55
1:D:1:MET:HG2	1:D:320:LYS:HD2	1.88	0.55
1:D:43:GLY:HA3	4:D:509:HOH:O	2.07	0.55
1:D:76:VAL:HG12	1:D:78:VAL:HG12	1.88	0.55
1:E:109:ARG:O	1:E:110:ARG:HD2	2.06	0.55
1:C:158:PHE:N	1:C:159:PRO:CD	2.70	0.55
1:F:3:ILE:HG12	1:F:70:VAL:HG13	1.88	0.55
1:A:47:ARG:HH22	3:A:402:PDC:C8	2.19	0.54
1:A:60:ILE:HD13	1:A:63:MET:HE3	1.89	0.54
1:B:274:LEU:HD12	1:B:274:LEU:C	2.27	0.54
1:E:287:ILE:CG2	1:E:324:ALA:HB2	2.36	0.54
1:B:33:SER:OG	1:B:34:LYS:N	2.41	0.54
1:F:1:MET:O	1:F:2:LYS:HG2	2.07	0.54
1:F:18:LYS:HA	1:F:23:TYR:O	2.06	0.54
1:A:186:LYS:O	1:A:189:LEU:HG	2.08	0.54
1:B:265:ASP:C	1:B:265:ASP:OD1	2.46	0.54
1:D:152:LEU:HB3	1:D:206:MET:HG3	1.89	0.54
1:D:332:ARG:O	4:D:548:HOH:O	2.18	0.54
1:F:152:LEU:HD22	1:F:202:ALA:HB1	1.90	0.54
1:F:16:ASP:O	1:F:20:ARG:HB2	2.08	0.54
1:A:86:PRO:HB3	1:A:121:ALA:CB	2.37	0.54
1:A:260:GLY:HA2	4:A:546:HOH:O	2.07	0.53
1:A:14:TRP:HB2	1:A:15:PRO:CD	2.38	0.53
1:B:46:PHE:O	1:B:46:PHE:CD1	2.61	0.53
1:B:165:GLU:HG3	1:B:217:LYS:HB2	1.89	0.53
1:F:63:MET:HE1	1:F:111:PHE:CE1	2.43	0.53
1:A:189:LEU:N	1:A:190:PRO:CD	2.71	0.53
1:F:286:VAL:HB	1:F:319:LEU:CD2	2.39	0.53

Continued on next page...

Continued from previous page...

Atom-1	Atom-2	Interatomic distance (Å)	Clash overlap (Å)
1:B:240:PHE:CZ	1:B:248:ALA:HB2	2.43	0.53
1:B:174:HIS:ND1	1:B:175:PRO:HD2	2.23	0.53
1:C:207:ILE:HG23	1:C:258:TYR:CD2	2.43	0.53
1:F:267:LEU:HD21	1:F:291:ASP:HB2	1.91	0.53
1:B:239:GLY:HA2	1:C:296:LEU:HD23	1.89	0.53
1:F:158:PHE:N	1:F:159:PRO:CD	2.71	0.53
1:A:1:MET:O	1:A:1:MET:SD	2.67	0.53
1:A:250:ASP:N	4:A:503:HOH:O	2.24	0.53
1:D:59:ARG:O	1:D:63:MET:HE3	2.09	0.53
1:F:61:ARG:HH11	1:F:61:ARG:CB	2.21	0.53
1:F:277:LEU:CD1	1:F:281:ILE:HG13	2.39	0.53
1:F:307:SER:O	1:F:309:GLU:N	2.42	0.53
1:E:158:PHE:N	1:E:159:PRO:CD	2.72	0.52
1:A:152:LEU:HD22	1:A:202:ALA:HB1	1.90	0.52
1:D:77:PRO:CG	3:D:402:PDC:H4	2.39	0.52
1:E:15:PRO:HG2	1:E:20:ARG:NH2	2.24	0.52
1:E:204:CYS:HB3	1:E:208:MET:CE	2.39	0.52
1:E:166:ARG:C	1:E:168:LYS:H	2.12	0.52
1:F:306:GLU:HG2	1:F:320:LYS:HE2	1.91	0.52
1:B:151:ASP:OD2	1:C:186:LYS:NZ	2.33	0.52
1:B:188:TRP:CG	1:C:246:LEU:HD12	2.45	0.52
1:C:183:ARG:O	1:C:186:LYS:NZ	2.42	0.52
1:F:129:MET:HG2	1:F:167:LEU:HD13	1.91	0.52
1:B:290:THR:HG21	1:B:292:TYR:HB2	1.90	0.52
1:C:55:ASP:CG	1:C:58:VAL:HG23	2.30	0.52
1:A:151:ASP:O	1:A:153:ASN:N	2.42	0.52
1:A:184:MET:O	1:A:190:PRO:HD3	2.09	0.52
1:C:12:LYS:O	1:C:13:GLU:HG3	2.10	0.52
1:E:189:LEU:N	1:E:190:PRO:CD	2.73	0.52
1:E:247:CYS:CA	4:E:515:HOH:O	2.57	0.52
1:B:128:GLU:OE2	1:B:131:ARG:NH1	2.42	0.52
1:B:187:TYR:CB	1:C:208:MET:CE	2.81	0.52
1:E:287:ILE:HG23	1:E:324:ALA:HB2	1.92	0.52
1:C:33:SER:HB3	1:C:36:GLU:HB2	1.92	0.52
1:C:210:GLY:O	1:C:214:LYS:CD	2.58	0.52
1:B:76:VAL:HG12	3:B:402:PDC:O2	2.10	0.51
1:B:215:PHE:N	1:B:216:PRO:HD3	2.25	0.51
1:D:302:GLY:O	1:D:306:GLU:HG2	2.11	0.51
1:F:63:MET:CE	1:F:111:PHE:CE1	2.94	0.51
1:A:151:ASP:C	1:A:153:ASN:H	2.14	0.51
1:A:270:ASP:OD2	1:F:256:LYS:NZ	2.30	0.51

Continued on next page...

Continued from previous page...

Atom-1	Atom-2	Interatomic distance (Å)	Clash overlap (Å)
1:D:284:ASP:OD1	1:D:318:LYS:HE3	2.10	0.51
1:A:254:ASN:HB3	1:A:257:LYS:HE3	1.93	0.51
1:F:165:GLU:OE1	1:F:215:PHE:HD1	1.94	0.51
1:E:99:ASP:OD1	4:E:513:HOH:O	2.19	0.51
1:F:27:VAL:HG11	1:F:79:MET:SD	2.51	0.51
1:F:188:TRP:C	1:F:190:PRO:HD2	2.31	0.51
1:F:7:SER:OG	1:F:72:ALA:O	2.29	0.51
1:B:97:ASN:ND2	1:B:132:CYS:SG	2.84	0.51
1:D:271:PRO:HA	1:D:304:LEU:HD11	1.93	0.51
1:E:178:MET:SD	1:E:178:MET:N	2.82	0.51
1:A:4:ASP:OD2	1:A:290:THR:HB	2.11	0.51
1:C:206:MET:HE3	1:C:211:VAL:HG11	1.92	0.50
1:E:265:ASP:OD1	1:E:265:ASP:C	2.48	0.50
1:F:195:MET:CE	1:F:224:HIS:NE2	2.74	0.50
1:A:316:LYS:O	1:A:320:LYS:HB2	2.11	0.50
1:D:129:MET:HG2	1:D:167:LEU:HD12	1.92	0.50
1:C:10:LEU:HD11	1:C:39:LEU:HD11	1.93	0.50
1:D:47:ARG:NH1	3:D:402:PDC:C7	2.75	0.50
1:C:109:ARG:O	1:C:110:ARG:HD2	2.11	0.50
1:C:129:MET:HG2	1:C:167:LEU:HD13	1.94	0.50
1:C:309:GLU:HG2	1:C:310:GLU:HG3	1.93	0.50
1:D:175:PRO:HG2	1:D:195:MET:CE	2.42	0.50
1:D:332:ARG:C	4:D:548:HOH:O	2.50	0.50
1:E:268:VAL:O	1:E:270:ASP:N	2.41	0.50
1:F:277:LEU:HD11	1:F:281:ILE:HG13	1.92	0.50
1:A:30:GLN:CD	1:A:40:LEU:HD11	2.31	0.50
1:F:32:HIS:O	1:F:32:HIS:ND1	2.44	0.50
1:A:174:HIS:CE1	3:A:402:PDC:C4	2.94	0.50
1:C:51:GLU:HG2	1:C:58:VAL:HG21	1.92	0.50
1:D:59:ARG:O	1:D:63:MET:CE	2.60	0.50
1:F:63:MET:HE3	1:F:111:PHE:CZ	2.46	0.50
1:C:140:GLY:HA2	1:C:169:CYS:SG	2.52	0.50
1:F:39:LEU:O	1:F:45:VAL:HG13	2.11	0.50
1:C:158:PHE:N	1:C:159:PRO:HD2	2.27	0.50
1:F:116:THR:O	1:F:117:LEU:HD23	2.12	0.50
1:F:193:VAL:O	1:F:196:PRO:HD2	2.12	0.49
1:B:12:LYS:H	1:B:12:LYS:CE	2.25	0.49
1:B:118:PRO:HD2	1:B:125:ALA:HA	1.93	0.49
1:C:63:MET:HE1	1:C:111:PHE:HE1	1.76	0.49
1:C:77:PRO:HG2	3:C:402:PDC:H3	1.94	0.49
1:D:153:ASN:HB3	1:D:205:SER:O	2.12	0.49

Continued on next page...

Continued from previous page...

Atom-1	Atom-2	Interatomic distance (Å)	Clash overlap (Å)
1:E:189:LEU:N	1:E:190:PRO:HD2	2.27	0.49
1:B:60:ILE:CD1	1:B:63:MET:HE3	2.35	0.49
1:E:304:LEU:O	1:E:308:MET:HG2	2.12	0.49
1:C:57:GLU:HG2	1:C:107:TYR:OH	2.12	0.49
1:D:224:HIS:CE1	3:D:402:PDC:O3	2.65	0.49
1:C:18:LYS:HG3	1:C:23:TYR:C	2.32	0.49
1:C:36:GLU:O	1:C:37:ALA:CB	2.57	0.49
1:F:82:TYR:CE1	1:F:119:MET:HB2	2.48	0.49
1:F:277:LEU:HD12	1:F:281:ILE:CG1	2.43	0.49
1:B:165:GLU:CG	1:B:217:LYS:HB2	2.43	0.49
1:E:131:ARG:O	1:E:135:GLU:HB2	2.13	0.49
1:C:291:ASP:OD2	3:C:402:PDC:H5	2.12	0.49
1:C:210:GLY:O	1:C:214:LYS:HD3	2.12	0.49
1:F:104:VAL:HG22	1:F:111:PHE:HB3	1.94	0.49
1:D:1:MET:N	1:D:320:LYS:HD2	2.27	0.49
1:E:47:ARG:NH1	4:E:517:HOH:O	2.46	0.49
1:B:251:ASN:O	4:B:550:HOH:O	2.20	0.48
1:D:220:VAL:N	4:D:538:HOH:O	2.45	0.48
1:D:238:HIS:NE2	1:E:299:LEU:HD11	2.28	0.48
1:E:5:ILE:HG22	1:E:288:LEU:O	2.13	0.48
1:F:95:LEU:HD23	1:F:95:LEU:O	2.13	0.48
1:A:63:MET:SD	1:A:71:GLN:HG3	2.52	0.48
1:B:235:ARG:HH12	1:C:224:HIS:CE1	2.30	0.48
1:C:286:VAL:HB	1:C:319:LEU:HD22	1.94	0.48
1:F:15:PRO:O	1:F:28:GLN:NE2	2.39	0.48
1:F:59:ARG:O	1:F:63:MET:HG3	2.14	0.48
1:F:154:ALA:HB1	1:F:156:GLU:OE1	2.13	0.48
1:A:219:LYS:HE3	1:A:327:PHE:HA	1.96	0.48
1:B:276:LEU:HD12	1:B:280:VAL:HG23	1.95	0.48
1:C:118:PRO:HD2	1:C:125:ALA:HA	1.96	0.48
1:E:40:LEU:HD12	1:E:40:LEU:O	2.14	0.48
1:F:290:THR:CG2	1:F:292:TYR:HB2	2.42	0.48
1:F:14:TRP:HB2	1:F:15:PRO:HD2	1.96	0.48
1:F:184:MET:O	1:F:190:PRO:HD3	2.14	0.48
1:E:105:VAL:CG1	1:E:106:SER:N	2.77	0.48
1:F:126:VAL:O	1:F:129:MET:HB3	2.13	0.48
1:F:147:VAL:O	1:F:150:TRP:HB2	2.14	0.48
1:D:156:GLU:O	1:D:159:PRO:HD2	2.14	0.48
1:D:27:VAL:HA	1:D:40:LEU:O	2.13	0.48
1:F:151:ASP:C	1:F:153:ASN:H	2.17	0.48
1:A:281:ILE:HG22	1:A:285:LYS:HB2	1.96	0.48

Continued on next page...

Continued from previous page...

Atom-1	Atom-2	Interatomic distance (Å)	Clash overlap (Å)
1:E:263:TYR:CD1	1:E:287:ILE:HD11	2.48	0.48
1:E:38:LYS:HG2	1:E:48:VAL:HG22	1.94	0.48
1:E:180:MET:O	1:E:185:ALA:HB2	2.14	0.48
1:B:290:THR:HG22	1:B:292:TYR:N	2.29	0.47
1:C:6:HIS:C	1:C:6:HIS:CD2	2.87	0.47
1:D:208:MET:HE1	1:E:187:TYR:HB3	1.96	0.47
1:E:5:ILE:O	1:E:5:ILE:HG13	2.14	0.47
1:E:47:ARG:HG2	1:E:49:VAL:HG13	1.96	0.47
1:B:145:THR:HG23	1:B:175:PRO:HA	1.96	0.47
1:D:178:MET:HE3	1:D:190:PRO:O	2.13	0.47
1:C:51:GLU:HG3	1:C:54:TRP:CH2	2.49	0.47
1:C:77:PRO:CG	3:C:402:PDC:H3	2.44	0.47
1:E:266:ALA:HB2	1:E:286:VAL:HG12	1.96	0.47
1:F:178:MET:SD	1:F:195:MET:HG3	2.55	0.47
1:D:35:GLY:CA	1:D:51:GLU:HG3	2.41	0.47
1:E:157:LEU:C	1:E:159:PRO:HD2	2.33	0.47
1:E:290:THR:HG22	1:E:292:TYR:HB2	1.95	0.47
1:F:118:PRO:HD2	1:F:125:ALA:HA	1.96	0.47
1:A:51:GLU:HA	1:A:54:TRP:NE1	2.29	0.47
1:A:170:SER:HB3	1:A:327:PHE:CZ	2.49	0.47
1:C:128:GLU:OE1	1:C:131:ARG:HD3	2.14	0.47
1:E:1:MET:HB2	1:E:306:GLU:OE2	2.14	0.47
1:F:57:GLU:HG3	1:F:107:TYR:OH	2.13	0.47
1:A:288:LEU:HD13	1:A:305:ILE:HD12	1.96	0.47
1:C:70:VAL:HG23	1:C:71:GLN:N	2.27	0.47
1:C:294:PHE:HB3	1:C:295:PRO:HD2	1.97	0.47
1:A:152:LEU:HB3	1:A:206:MET:HG2	1.97	0.47
1:A:235:ARG:NH2	1:F:195:MET:CE	2.75	0.47
1:C:150:TRP:CZ2	1:C:156:GLU:HG2	2.49	0.47
1:F:181:ASP:OD1	1:F:181:ASP:N	2.46	0.47
1:A:207:ILE:HG23	1:A:258:TYR:CE2	2.50	0.47
1:E:95:LEU:HD23	1:E:95:LEU:C	2.35	0.47
1:D:59:ARG:HB3	1:D:63:MET:CE	2.45	0.47
1:E:120:GLN:HG2	1:E:121:ALA:N	2.29	0.47
1:F:18:LYS:HE2	1:F:24:GLY:HA3	1.97	0.47
1:F:128:GLU:HA	1:F:128:GLU:OE1	2.15	0.47
1:F:83:TRP:CE3	1:F:84:ALA:N	2.82	0.47
1:F:1:MET:HG2	1:F:320:LYS:HZ3	1.80	0.46
1:D:224:HIS:HE1	3:D:402:PDC:O3	1.99	0.46
1:E:186:LYS:HD2	1:E:187:TYR:CD1	2.50	0.46
1:E:287:ILE:HG23	4:E:509:HOH:O	2.15	0.46

Continued on next page...

Continued from previous page...

Atom-1	Atom-2	Interatomic distance (Å)	Clash overlap (Å)
1:F:27:VAL:O	1:F:28:GLN:HG2	2.14	0.46
1:A:107:TYR:N	1:A:108:PRO:CD	2.78	0.46
1:B:290:THR:HG22	1:B:292:TYR:HB2	1.97	0.46
1:F:90:LEU:HD23	1:F:124:LEU:HD22	1.96	0.46
1:A:265:ASP:HA	1:A:287:ILE:O	2.16	0.46
1:B:94:GLN:NE2	4:B:503:HOH:O	2.31	0.46
1:B:158:PHE:N	1:B:159:PRO:CD	2.78	0.46
1:B:195:MET:CE	1:B:224:HIS:NE2	2.79	0.46
1:C:304:LEU:O	1:C:308:MET:HG2	2.15	0.46
1:E:291:ASP:OD1	3:E:402:PDC:H4	2.15	0.46
1:A:8:HIS:HA	1:A:74:SER:O	2.16	0.46
1:D:281:ILE:HG22	1:D:285:LYS:HB2	1.97	0.46
1:E:47:ARG:HG3	1:E:48:VAL:N	2.31	0.46
1:D:158:PHE:N	1:D:159:PRO:CD	2.79	0.46
1:D:191:TRP:NE1	3:D:402:PDC:O1	2.49	0.46
1:E:235:ARG:HG3	1:E:235:ARG:HH11	1.81	0.46
1:D:8:HIS:CE1	3:D:402:PDC:H4	2.50	0.46
1:B:12:LYS:CD	1:B:12:LYS:N	2.76	0.46
1:B:12:LYS:HD3	1:B:12:LYS:N	2.31	0.46
1:D:6:HIS:HB3	1:D:290:THR:H	1.81	0.46
1:D:265:ASP:C	1:D:265:ASP:OD1	2.54	0.46
1:F:61:ARG:O	1:F:65:GLN:HG3	2.16	0.46
1:F:242:MET:HA	1:F:242:MET:CE	2.46	0.46
1:B:281:ILE:HG22	1:B:285:LYS:HB2	1.98	0.46
1:B:195:MET:HE2	1:B:224:HIS:NE2	2.31	0.45
1:D:210:GLY:C	1:D:214:LYS:HD3	2.36	0.45
1:F:8:HIS:HE1	1:F:142:GLN:HE22	1.64	0.45
1:F:14:TRP:CH2	1:F:29:LEU:HB2	2.51	0.45
1:A:295:PRO:C	1:A:297:GLY:H	2.19	0.45
1:B:193:VAL:C	1:B:196:PRO:HD2	2.37	0.45
1:D:152:LEU:CB	1:D:206:MET:HG3	2.47	0.45
1:A:263:TYR:HA	1:A:285:LYS:O	2.15	0.45
1:B:32:HIS:HE2	1:B:38:LYS:HE3	1.79	0.45
1:D:147:VAL:O	1:D:148:ASN:HB2	2.16	0.45
1:F:117:LEU:HB3	1:F:118:PRO:HD2	1.99	0.45
1:A:27:VAL:CG1	1:A:79:MET:SD	3.05	0.45
1:A:265:ASP:OD1	1:A:265:ASP:C	2.55	0.45
1:B:206:MET:HE1	1:B:211:VAL:HG11	1.96	0.45
1:D:113:GLY:O	1:D:139:PRO:HD2	2.17	0.45
1:C:73:LEU:HD11	1:C:111:PHE:CG	2.51	0.45
1:C:175:PRO:HG2	1:C:195:MET:CE	2.47	0.45

Continued on next page...

Continued from previous page...

Atom-1	Atom-2	Interatomic distance (Å)	Clash overlap (Å)
1:D:186:LYS:O	1:D:189:LEU:HG	2.16	0.45
1:A:299:LEU:O	1:A:301:PRO:HD3	2.16	0.45
1:F:120:GLN:N	1:F:120:GLN:OE1	2.49	0.45
1:F:150:TRP:CZ2	1:F:156:GLU:CG	2.97	0.45
1:B:287:ILE:CG2	1:B:324:ALA:HB2	2.47	0.45
1:C:265:ASP:OD1	1:C:265:ASP:C	2.55	0.45
1:E:247:CYS:C	4:E:515:HOH:O	2.54	0.45
1:A:27:VAL:HG13	1:A:79:MET:SD	2.57	0.45
1:A:235:ARG:HH22	1:F:195:MET:HE1	1.80	0.45
1:F:2:LYS:HB3	1:F:321:ALA:HB2	1.99	0.45
1:B:181:ASP:HA	1:B:185:ALA:HB2	1.99	0.45
1:F:277:LEU:HD12	1:F:281:ILE:HG12	1.98	0.45
1:A:109:ARG:C	1:A:110:ARG:HD2	2.37	0.44
1:A:291:ASP:OD1	3:A:402:PDC:C3	2.64	0.44
1:C:130:GLU:CG	1:C:167:LEU:HD21	2.47	0.44
1:E:105:VAL:O	1:E:108:PRO:HD3	2.17	0.44
1:E:308:MET:HG3	1:E:311:PHE:HE2	1.80	0.44
1:F:33:SER:C	1:F:35:GLY:N	2.67	0.44
1:B:16:ASP:OD1	1:B:19:LYS:HG3	2.18	0.44
1:B:91:ASN:HA	4:B:577:HOH:O	2.16	0.44
1:B:265:ASP:HA	1:B:287:ILE:O	2.18	0.44
1:E:320:LYS:HB2	1:E:320:LYS:HE3	1.68	0.44
1:F:166:ARG:O	1:F:168:LYS:HG3	2.17	0.44
1:A:322:GLY:HA2	4:A:558:HOH:O	2.18	0.44
1:B:4:ASP:OD2	1:B:290:THR:CB	2.62	0.44
1:B:27:VAL:HA	1:B:40:LEU:O	2.17	0.44
1:B:276:LEU:HD23	1:C:231:PHE:CD1	2.52	0.44
1:E:235:ARG:HG3	1:E:235:ARG:NH1	2.31	0.44
1:D:178:MET:HE3	1:D:195:MET:HG3	1.99	0.44
1:D:162:ALA:O	1:D:166:ARG:HG3	2.18	0.44
1:E:247:CYS:HA	4:E:515:HOH:O	2.15	0.44
1:F:32:HIS:O	1:F:33:SER:HB2	2.17	0.44
1:F:76:VAL:HG12	1:F:78:VAL:CG1	2.41	0.44
1:F:306:GLU:CG	1:F:320:LYS:HE2	2.48	0.44
1:B:195:MET:HB2	1:B:196:PRO:HD3	1.99	0.44
1:C:63:MET:HE1	1:C:111:PHE:CE1	2.53	0.44
1:D:235:ARG:NH2	1:E:296:LEU:HD13	2.32	0.44
1:B:5:ILE:HG13	1:B:5:ILE:O	2.17	0.44
1:E:60:ILE:CD1	1:E:107:TYR:CD1	3.01	0.44
1:E:189:LEU:HD23	1:E:189:LEU:HA	1.80	0.44
1:F:16:ASP:OD2	1:F:19:LYS:CB	2.63	0.44

Continued on next page...

Continued from previous page...

Atom-1	Atom-2	Interatomic distance (Å)	Clash overlap (Å)
1:F:27:VAL:CG1	1:F:79:MET:SD	3.06	0.44
1:B:60:ILE:CD1	1:B:63:MET:HE1	2.23	0.43
1:C:2:LYS:NZ	4:C:529:HOH:O	2.37	0.43
1:D:66:LYS:HD2	1:D:301:PRO:HD2	2.00	0.43
1:F:47:ARG:NH2	3:F:402:PDC:O3	2.50	0.43
1:F:78:VAL:O	1:F:78:VAL:CG2	2.67	0.43
1:F:190:PRO:HB2	1:F:191:TRP:CE3	2.52	0.43
1:B:88:ASP:O	1:B:91:ASN:HB3	2.17	0.43
1:D:184:MET:O	1:D:190:PRO:HD3	2.18	0.43
1:E:4:ASP:OD2	1:E:290:THR:CB	2.61	0.43
1:F:141:VAL:CG2	1:F:171:LEU:HD23	2.47	0.43
1:F:240:PHE:CZ	1:F:248:ALA:HB2	2.53	0.43
1:D:122:PRO:O	1:D:126:VAL:HG23	2.18	0.43
1:F:101:ALA:O	1:F:102:SER:C	2.57	0.43
1:F:138:PHE:N	1:F:138:PHE:CD1	2.86	0.43
1:F:332:ARG:H	1:F:332:ARG:HG3	1.36	0.43
1:F:291:ASP:OD2	3:F:402:PDC:H5	2.17	0.43
1:F:306:GLU:HG2	1:F:320:LYS:CE	2.47	0.43
1:C:175:PRO:HG2	1:C:195:MET:HE2	2.01	0.43
1:C:224:HIS:HB2	4:C:507:HOH:O	2.18	0.43
1:F:166:ARG:C	1:F:168:LYS:H	2.21	0.43
1:F:265:ASP:HA	1:F:287:ILE:O	2.17	0.43
1:A:184:MET:O	1:A:186:LYS:N	2.44	0.43
1:A:254:ASN:H	1:A:257:LYS:NZ	2.16	0.43
1:E:97:ASN:ND2	1:E:132:CYS:SG	2.92	0.43
1:F:305:ILE:HD13	1:F:319:LEU:HB3	2.00	0.43
1:D:78:VAL:O	1:D:78:VAL:CG2	2.65	0.43
1:D:275:LYS:HE3	1:D:310:GLU:OE2	2.19	0.43
1:F:150:TRP:HZ2	1:F:156:GLU:HG2	1.81	0.43
1:F:152:LEU:CD2	1:F:202:ALA:HB1	2.49	0.43
1:B:14:TRP:CH2	1:B:29:LEU:HB2	2.54	0.43
1:B:165:GLU:HG2	1:B:217:LYS:HD3	2.01	0.43
1:E:84:ALA:O	1:E:120:GLN:NE2	2.52	0.43
1:E:149:GLU:O	1:E:149:GLU:CG	2.61	0.43
1:C:96:LEU:O	1:C:100:LEU:HD13	2.18	0.43
1:F:119:MET:C	1:F:121:ALA:H	2.22	0.43
1:F:149:GLU:O	1:F:150:TRP:C	2.57	0.43
1:A:158:PHE:N	1:A:159:PRO:CD	2.81	0.43
1:A:195:MET:CE	1:F:235:ARG:NH2	2.82	0.43
1:A:235:ARG:HH22	1:F:195:MET:HE2	1.81	0.43
1:B:308:MET:HG3	1:B:311:PHE:CE2	2.54	0.43

Continued on next page...

Continued from previous page...

Atom-1	Atom-2	Interatomic distance (Å)	Clash overlap (Å)
1:C:292:TYR:HA	1:C:293:PRO:HA	1.74	0.43
1:E:8:HIS:HB3	1:E:76:VAL:HG22	2.00	0.43
1:E:166:ARG:C	1:E:168:LYS:N	2.72	0.43
1:E:271:PRO:CA	1:E:304:LEU:HD11	2.49	0.43
1:C:12:LYS:N	1:C:12:LYS:CD	2.79	0.42
1:E:259:LEU:HD23	1:E:259:LEU:HA	1.91	0.42
1:A:274:LEU:HD22	1:A:304:LEU:HG	2.00	0.42
1:C:281:ILE:HG22	1:C:285:LYS:CB	2.45	0.42
1:E:206:MET:HE2	1:E:212:PHE:CZ	2.55	0.42
1:A:60:ILE:HD11	1:A:111:PHE:CZ	2.54	0.42
1:B:308:MET:HB2	1:B:311:PHE:CD2	2.54	0.42
1:C:258:TYR:O	1:C:261:SER:HB2	2.19	0.42
1:F:65:GLN:NE2	4:F:523:HOH:O	2.52	0.42
1:F:141:VAL:HG23	1:F:171:LEU:HD23	2.02	0.42
1:A:54:TRP:CD1	4:A:526:HOH:O	2.64	0.42
1:A:176:TRP:CD2	1:A:177:ASP:HB2	2.54	0.42
1:D:290:THR:HG22	1:D:292:TYR:HB2	2.01	0.42
1:E:114:LEU:HA	1:E:140:GLY:O	2.20	0.42
1:B:27:VAL:CG2	1:B:39:LEU:HD22	2.49	0.42
1:D:51:GLU:C	1:D:53:CYS:H	2.23	0.42
1:E:229:PHE:HB3	1:E:230:PRO:HD3	2.01	0.42
1:F:77:PRO:CG	3:F:402:PDC:H3	2.29	0.42
1:A:126:VAL:O	1:A:126:VAL:CG1	2.68	0.42
1:C:62:GLU:OE1	1:C:292:TYR:OH	2.22	0.42
1:E:4:ASP:C	1:E:4:ASP:OD1	2.58	0.42
1:C:313:GLU:OE2	1:C:313:GLU:HA	2.20	0.42
1:D:145:THR:CG2	1:D:175:PRO:HA	2.49	0.42
1:D:174:HIS:CE1	3:D:402:PDC:C5	3.03	0.42
1:D:4:ASP:OD2	1:D:290:THR:HB	2.20	0.42
1:E:329:GLY:O	1:E:330:LEU:HD23	2.19	0.42
1:F:27:VAL:HA	1:F:40:LEU:O	2.19	0.42
1:F:77:PRO:O	1:F:79:MET:N	2.53	0.42
1:A:32:HIS:HB2	1:D:309:GLU:HB2	2.02	0.42
1:A:188:TRP:C	1:A:190:PRO:HD2	2.40	0.42
1:A:242:MET:HG3	1:F:295:PRO:O	2.19	0.42
1:B:145:THR:CG2	1:B:175:PRO:HA	2.49	0.42
1:B:276:LEU:HD22	1:C:276:LEU:CD2	2.50	0.42
1:E:77:PRO:C	1:E:79:MET:H	2.22	0.42
1:E:309:GLU:HG2	1:E:310:GLU:N	2.35	0.42
1:F:8:HIS:HA	1:F:74:SER:O	2.20	0.42
1:F:30:GLN:OE1	1:F:30:GLN:HA	2.20	0.42

Continued on next page...

Continued from previous page...

Atom-1	Atom-2	Interatomic distance (Å)	Clash overlap (Å)
1:A:55:ASP:OD1	1:A:55:ASP:C	2.59	0.42
1:A:314:GLU:O	1:A:318:LYS:HG3	2.20	0.42
1:C:210:GLY:O	1:C:214:LYS:HD2	2.20	0.42
1:E:6:HIS:HB3	1:E:290:THR:H	1.84	0.42
1:E:55:ASP:HA	1:E:56:PRO:HD3	1.82	0.42
1:A:161:TYR:HB3	1:A:218:LEU:HD22	2.01	0.41
1:A:323:ASN:HB2	4:A:508:HOH:O	2.20	0.41
1:F:116:THR:OG1	4:F:521:HOH:O	2.22	0.41
1:F:274:LEU:HD23	1:F:308:MET:CG	2.50	0.41
1:A:147:VAL:O	1:A:148:ASN:HB2	2.19	0.41
1:E:45:VAL:O	1:E:45:VAL:HG12	2.20	0.41
1:E:158:PHE:N	1:E:158:PHE:CD1	2.88	0.41
1:C:229:PHE:O	1:C:231:PHE:N	2.53	0.41
1:A:109:ARG:O	1:A:110:ARG:HD2	2.19	0.41
1:A:292:TYR:HA	1:A:293:PRO:HA	1.76	0.41
1:B:309:GLU:H	1:B:309:GLU:HG2	1.43	0.41
1:C:10:LEU:O	1:C:54:TRP:HB3	2.20	0.41
1:C:178:MET:SD	1:C:178:MET:N	2.92	0.41
1:E:240:PHE:CD2	1:E:254:ASN:HA	2.55	0.41
1:F:61:ARG:CB	1:F:61:ARG:CZ	2.99	0.41
1:C:155:GLN:O	1:C:155:GLN:HG3	2.19	0.41
1:C:184:MET:HE3	1:C:189:LEU:HB2	2.01	0.41
1:C:287:ILE:CG2	1:C:324:ALA:HB2	2.51	0.41
1:D:41:LYS:O	1:D:42:ASP:C	2.59	0.41
1:E:76:VAL:HA	1:E:77:PRO:HD3	1.90	0.41
1:F:16:ASP:O	1:F:20:ARG:CB	2.68	0.41
1:A:126:VAL:O	1:A:126:VAL:HG12	2.21	0.41
1:A:290:THR:HG22	1:A:292:TYR:CB	2.49	0.41
1:C:214:LYS:HD2	1:C:214:LYS:N	2.36	0.41
1:D:178:MET:HE3	1:D:195:MET:CG	2.51	0.41
1:E:154:ALA:HB1	1:E:156:GLU:OE1	2.20	0.41
1:F:5:ILE:O	1:F:5:ILE:HG13	2.20	0.41
1:F:77:PRO:C	1:F:79:MET:H	2.24	0.41
1:A:55:ASP:HA	1:A:56:PRO:HD3	1.91	0.41
1:B:32:HIS:CD2	1:B:38:LYS:CE	3.00	0.41
1:C:170:SER:HB3	1:C:327:PHE:CZ	2.56	0.41
1:F:2:LYS:CB	1:F:321:ALA:HB2	2.51	0.41
1:F:138:PHE:N	1:F:138:PHE:HD1	2.18	0.41
1:F:268:VAL:O	1:F:270:ASP:N	2.54	0.41
1:B:32:HIS:HE1	1:B:36:GLU:HB2	1.86	0.41
1:B:158:PHE:N	1:B:159:PRO:HD2	2.35	0.41

Continued on next page...

Continued from previous page...

Atom-1	Atom-2	Interatomic distance (Å)	Clash overlap (Å)
1:C:32:HIS:NE2	1:C:36:GLU:CB	2.79	0.41
1:D:77:PRO:C	1:D:79:MET:H	2.24	0.41
1:D:127:LYS:HD3	1:D:127:LYS:HA	1.93	0.41
1:E:290:THR:HG22	1:E:292:TYR:CA	2.51	0.41
1:F:99:ASP:O	1:F:99:ASP:CG	2.59	0.41
1:C:116:THR:O	1:C:117:LEU:HD23	2.21	0.41
1:D:210:GLY:O	1:D:214:LYS:HD2	2.18	0.41
1:D:281:ILE:HG22	1:D:285:LYS:CB	2.51	0.41
1:E:248:ALA:HB1	1:E:252:PRO:HA	2.01	0.41
1:B:116:THR:HG22	4:B:533:HOH:O	2.21	0.41
1:E:321:ALA:O	1:E:322:GLY:C	2.59	0.41
1:F:23:TYR:OH	1:F:85:LYS:HG3	2.21	0.41
1:C:204:CYS:HB3	1:C:208:MET:HE2	2.03	0.40
1:D:152:LEU:N	1:D:152:LEU:CD1	2.85	0.40
1:E:127:LYS:HE3	1:E:127:LYS:HB2	1.67	0.40
1:F:240:PHE:CD2	1:F:240:PHE:C	2.94	0.40
1:D:9:ILE:HG12	1:D:10:LEU:N	2.36	0.40
1:D:115:GLY:O	1:D:141:VAL:HB	2.21	0.40
1:D:118:PRO:HD2	1:D:125:ALA:HA	2.03	0.40
1:E:315:THR:O	1:E:319:LEU:HG	2.21	0.40
1:C:193:VAL:C	1:C:196:PRO:HD2	2.42	0.40
1:B:188:TRP:CH2	1:B:296:LEU:HG	2.57	0.40
1:D:325:LEU:O	1:D:329:GLY:N	2.54	0.40
1:A:100:LEU:HD12	1:A:100:LEU:HA	1.92	0.40
1:A:271:PRO:HA	1:A:304:LEU:HD11	2.04	0.40
1:C:208:MET:O	1:C:250:ASP:HB2	2.21	0.40
1:D:120:GLN:OE1	1:D:120:GLN:N	2.41	0.40
1:D:295:PRO:O	1:E:242:MET:HG3	2.22	0.40
1:F:79:MET:HE2	1:F:96:LEU:HD11	2.04	0.40

There are no symmetry-related clashes.

5.3 Torsion angles [i](#)

5.3.1 Protein backbone [i](#)

In the following table, the Percentiles column shows the percent Ramachandran outliers of the chain as a percentile score with respect to all X-ray entries followed by that with respect to entries of similar resolution.

The Analysed column shows the number of residues for which the backbone conformation was analysed, and the total number of residues.

Mol	Chain	Analysed	Favoured	Allowed	Outliers	Percentiles	
1	A	330/332 (99%)	306 (93%)	18 (6%)	6 (2%)	8	14
1	B	330/332 (99%)	315 (96%)	14 (4%)	1 (0%)	41	61
1	C	330/332 (99%)	299 (91%)	26 (8%)	5 (2%)	10	18
1	D	330/332 (99%)	307 (93%)	20 (6%)	3 (1%)	17	31
1	E	330/332 (99%)	302 (92%)	27 (8%)	1 (0%)	41	61
1	F	330/332 (99%)	279 (84%)	35 (11%)	16 (5%)	2	2
All	All	1980/1992 (99%)	1808 (91%)	140 (7%)	32 (2%)	9	17

All (32) Ramachandran outliers are listed below:

Mol	Chain	Res	Type
1	A	42	ASP
1	C	37	ALA
1	D	42	ASP
1	E	42	ASP
1	F	33	SER
1	F	34	LYS
1	F	152	LEU
1	A	152	LEU
1	A	178	MET
1	C	42	ASP
1	F	15	PRO
1	F	78	VAL
1	F	131	ARG
1	F	176	TRP
1	F	308	MET
1	C	308	MET
1	F	32	HIS
1	F	132	CYS
1	A	16	ASP
1	A	148	ASN
1	A	185	ALA
1	D	290	THR
1	F	148	ASN
1	F	259	LEU
1	F	267	LEU
1	B	148	ASN
1	C	312	ASP
1	C	229	PHE
1	D	148	ASN
1	F	120	GLN

Continued on next page...

Continued from previous page...

Mol	Chain	Res	Type
1	F	301	PRO
1	F	35	GLY

5.3.2 Protein sidechains [i](#)

In the following table, the Percentiles column shows the percent sidechain outliers of the chain as a percentile score with respect to all X-ray entries followed by that with respect to entries of similar resolution.

The Analysed column shows the number of residues for which the sidechain conformation was analysed, and the total number of residues.

Mol	Chain	Analysed	Rotameric	Outliers	Percentiles	
1	A	285/285 (100%)	269 (94%)	16 (6%)	21	40
1	B	285/285 (100%)	265 (93%)	20 (7%)	15	29
1	C	285/285 (100%)	269 (94%)	16 (6%)	21	40
1	D	285/285 (100%)	275 (96%)	10 (4%)	36	62
1	E	285/285 (100%)	275 (96%)	10 (4%)	36	62
1	F	285/285 (100%)	268 (94%)	17 (6%)	19	37
All	All	1710/1710 (100%)	1621 (95%)	89 (5%)	23	44

All (89) residues with a non-rotameric sidechain are listed below:

Mol	Chain	Res	Type
1	A	1	MET
1	A	12	LYS
1	A	19	LYS
1	A	42	ASP
1	A	46	PHE
1	A	65	GLN
1	A	70	VAL
1	A	123	GLU
1	A	152	LEU
1	A	176	TRP
1	A	188	TRP
1	A	214	LYS
1	A	237	SER
1	A	290	THR
1	A	291	ASP
1	A	296	LEU

Continued on next page...

Continued from previous page...

Mol	Chain	Res	Type
1	B	1	MET
1	B	12	LYS
1	B	27	VAL
1	B	32	HIS
1	B	41	LYS
1	B	42	ASP
1	B	46	PHE
1	B	70	VAL
1	B	78	VAL
1	B	100	LEU
1	B	109	ARG
1	B	130	GLU
1	B	152	LEU
1	B	176	TRP
1	B	249	GLN
1	B	274	LEU
1	B	291	ASP
1	B	296	LEU
1	B	309	GLU
1	B	332	ARG
1	C	1	MET
1	C	12	LYS
1	C	27	VAL
1	C	41	LYS
1	C	105	VAL
1	C	131	ARG
1	C	152	LEU
1	C	176	TRP
1	C	241	SER
1	C	249	GLN
1	C	261	SER
1	C	275	LYS
1	C	284	ASP
1	C	306	GLU
1	C	309	GLU
1	C	313	GLU
1	D	12	LYS
1	D	70	VAL
1	D	100	LEU
1	D	145	THR
1	D	176	TRP
1	D	241	SER

Continued on next page...

Continued from previous page...

Mol	Chain	Res	Type
1	D	267	LEU
1	D	290	THR
1	D	296	LEU
1	D	306	GLU
1	E	5	ILE
1	E	12	LYS
1	E	70	VAL
1	E	152	LEU
1	E	176	TRP
1	E	246	LEU
1	E	291	ASP
1	E	296	LEU
1	E	313	GLU
1	E	332	ARG
1	F	12	LYS
1	F	28	GLN
1	F	48	VAL
1	F	70	VAL
1	F	109	ARG
1	F	143	ILE
1	F	149	GLU
1	F	151	ASP
1	F	152	LEU
1	F	176	TRP
1	F	214	LYS
1	F	249	GLN
1	F	290	THR
1	F	291	ASP
1	F	296	LEU
1	F	312	ASP
1	F	332	ARG

Sometimes sidechains can be flipped to improve hydrogen bonding and reduce clashes. All (1) such sidechains are listed below:

Mol	Chain	Res	Type
1	B	142	GLN

5.3.3 RNA [i](#)

There are no RNA molecules in this entry.

5.4 Non-standard residues in protein, DNA, RNA chains [i](#)

There are no non-standard protein/DNA/RNA residues in this entry.

5.5 Carbohydrates [i](#)

There are no monosaccharides in this entry.

5.6 Ligand geometry [i](#)

Of 12 ligands modelled in this entry, 6 are monoatomic - leaving 6 for Mogul analysis.

In the following table, the Counts columns list the number of bonds (or angles) for which Mogul statistics could be retrieved, the number of bonds (or angles) that are observed in the model and the number of bonds (or angles) that are defined in the Chemical Component Dictionary. The Link column lists molecule types, if any, to which the group is linked. The Z score for a bond length (or angle) is the number of standard deviations the observed value is removed from the expected value. A bond length (or angle) with $|Z| > 2$ is considered an outlier worth inspection. RMSZ is the root-mean-square of all Z scores of the bond lengths (or angles).

Mol	Type	Chain	Res	Link	Bond lengths			Bond angles		
					Counts	RMSZ	# Z > 2	Counts	RMSZ	# Z > 2
3	PDC	D	402	-	12,12,12	2.48	4 (33%)	16,16,16	1.89	3 (18%)
3	PDC	C	402	-	12,12,12	2.32	4 (33%)	16,16,16	2.53	4 (25%)
3	PDC	E	402	-	12,12,12	3.25	4 (33%)	16,16,16	1.99	7 (43%)
3	PDC	B	402	-	12,12,12	3.78	4 (33%)	16,16,16	1.92	4 (25%)
3	PDC	F	402	-	12,12,12	1.13	0	16,16,16	2.21	6 (37%)
3	PDC	A	402	-	12,12,12	1.44	1 (8%)	16,16,16	1.47	3 (18%)

In the following table, the Chirals column lists the number of chiral outliers, the number of chiral centers analysed, the number of these observed in the model and the number defined in the Chemical Component Dictionary. Similar counts are reported in the Torsion and Rings columns. '-' means no outliers of that kind were identified.

Mol	Type	Chain	Res	Link	Chirals	Torsions	Rings
3	PDC	D	402	-	-	8/8/8/8	0/1/1/1
3	PDC	C	402	-	-	8/8/8/8	0/1/1/1
3	PDC	E	402	-	-	8/8/8/8	0/1/1/1
3	PDC	B	402	-	-	8/8/8/8	0/1/1/1
3	PDC	F	402	-	-	8/8/8/8	0/1/1/1
3	PDC	A	402	-	-	8/8/8/8	0/1/1/1

All (17) bond length outliers are listed below:

Mol	Chain	Res	Type	Atoms	Z	Observed(Å)	Ideal(Å)
3	B	402	PDC	C6-C8	9.22	1.63	1.50
3	E	402	PDC	C2-C7	8.73	1.63	1.50
3	B	402	PDC	C5-C6	6.04	1.50	1.39
3	B	402	PDC	C2-C7	5.38	1.58	1.50
3	D	402	PDC	C6-C8	4.90	1.57	1.50
3	D	402	PDC	C2-C7	4.86	1.57	1.50
3	C	402	PDC	C6-N1	4.19	1.40	1.34
3	C	402	PDC	C6-C8	4.11	1.56	1.50
3	E	402	PDC	C6-C8	3.96	1.56	1.50
3	E	402	PDC	C2-N1	3.93	1.40	1.34
3	C	402	PDC	C2-C7	3.78	1.56	1.50
3	B	402	PDC	C6-N1	3.70	1.39	1.34
3	A	402	PDC	C2-C7	3.56	1.55	1.50
3	E	402	PDC	C6-N1	3.30	1.39	1.34
3	D	402	PDC	C6-N1	3.13	1.39	1.34
3	C	402	PDC	C2-N1	2.82	1.38	1.34
3	D	402	PDC	C2-N1	2.47	1.38	1.34

All (27) bond angle outliers are listed below:

Mol	Chain	Res	Type	Atoms	Z	Observed(°)	Ideal(°)
3	C	402	PDC	C7-C2-N1	5.64	124.79	116.48
3	C	402	PDC	C8-C6-N1	4.89	123.69	116.48
3	F	402	PDC	C5-C6-C8	-4.63	112.33	120.27
3	B	402	PDC	C7-C2-N1	4.60	123.26	116.48
3	D	402	PDC	C7-C2-N1	4.60	123.26	116.48
3	E	402	PDC	C7-C2-N1	4.50	123.11	116.48
3	F	402	PDC	C8-C6-N1	4.47	123.07	116.48
3	C	402	PDC	C3-C2-C7	-4.34	112.83	120.27
3	C	402	PDC	C5-C6-C8	-3.76	113.83	120.27
3	E	402	PDC	C8-C6-N1	3.56	121.73	116.48
3	A	402	PDC	C7-C2-N1	3.55	121.70	116.48
3	B	402	PDC	C3-C2-C7	-3.37	114.50	120.27
3	D	402	PDC	C8-C6-N1	3.32	121.37	116.48
3	D	402	PDC	C3-C2-C7	-3.15	114.88	120.27
3	B	402	PDC	C4-C3-C2	3.08	122.36	118.63
3	F	402	PDC	C7-C2-N1	3.00	120.90	116.48
3	A	402	PDC	C3-C2-C7	-2.77	115.52	120.27
3	B	402	PDC	C4-C5-C6	-2.75	115.30	118.63
3	E	402	PDC	O2-C7-C2	2.64	120.69	114.69
3	E	402	PDC	C5-C6-C8	-2.56	115.89	120.27
3	A	402	PDC	C5-C4-C3	-2.44	116.79	120.25

Continued on next page...

Continued from previous page...

Mol	Chain	Res	Type	Atoms	Z	Observed(°)	Ideal(°)
3	E	402	PDC	O1-C7-C2	-2.36	116.45	121.24
3	F	402	PDC	C3-C2-C7	-2.35	116.25	120.27
3	E	402	PDC	C3-C2-C7	-2.28	116.37	120.27
3	F	402	PDC	O1-C7-C2	-2.24	116.70	121.24
3	F	402	PDC	O4-C8-O3	2.09	127.98	123.35
3	E	402	PDC	C3-C2-N1	-2.06	120.50	122.92

There are no chirality outliers.

All (48) torsion outliers are listed below:

Mol	Chain	Res	Type	Atoms
3	A	402	PDC	N1-C2-C7-O1
3	A	402	PDC	N1-C2-C7-O2
3	A	402	PDC	C3-C2-C7-O1
3	A	402	PDC	C3-C2-C7-O2
3	A	402	PDC	N1-C6-C8-O3
3	A	402	PDC	N1-C6-C8-O4
3	A	402	PDC	C5-C6-C8-O3
3	A	402	PDC	C5-C6-C8-O4
3	B	402	PDC	N1-C2-C7-O1
3	B	402	PDC	N1-C2-C7-O2
3	B	402	PDC	C3-C2-C7-O1
3	B	402	PDC	C3-C2-C7-O2
3	B	402	PDC	N1-C6-C8-O3
3	B	402	PDC	N1-C6-C8-O4
3	B	402	PDC	C5-C6-C8-O3
3	B	402	PDC	C5-C6-C8-O4
3	C	402	PDC	N1-C2-C7-O1
3	C	402	PDC	N1-C2-C7-O2
3	C	402	PDC	C3-C2-C7-O1
3	C	402	PDC	C3-C2-C7-O2
3	C	402	PDC	N1-C6-C8-O3
3	C	402	PDC	N1-C6-C8-O4
3	C	402	PDC	C5-C6-C8-O3
3	C	402	PDC	C5-C6-C8-O4
3	E	402	PDC	N1-C2-C7-O1
3	E	402	PDC	N1-C2-C7-O2
3	E	402	PDC	C3-C2-C7-O1
3	E	402	PDC	C3-C2-C7-O2
3	E	402	PDC	N1-C6-C8-O3
3	E	402	PDC	N1-C6-C8-O4
3	E	402	PDC	C5-C6-C8-O3

Continued on next page...

Continued from previous page...

Mol	Chain	Res	Type	Atoms
3	E	402	PDC	C5-C6-C8-O4
3	F	402	PDC	N1-C2-C7-O1
3	F	402	PDC	N1-C2-C7-O2
3	F	402	PDC	C3-C2-C7-O1
3	F	402	PDC	C3-C2-C7-O2
3	F	402	PDC	N1-C6-C8-O3
3	F	402	PDC	N1-C6-C8-O4
3	F	402	PDC	C5-C6-C8-O3
3	F	402	PDC	C5-C6-C8-O4
3	D	402	PDC	N1-C6-C8-O4
3	D	402	PDC	N1-C6-C8-O3
3	D	402	PDC	C5-C6-C8-O3
3	D	402	PDC	C5-C6-C8-O4
3	D	402	PDC	N1-C2-C7-O2
3	D	402	PDC	C3-C2-C7-O2
3	D	402	PDC	N1-C2-C7-O1
3	D	402	PDC	C3-C2-C7-O1

There are no ring outliers.

6 monomers are involved in 41 short contacts:

Mol	Chain	Res	Type	Clashes	Symm-Clashes
3	D	402	PDC	12	0
3	C	402	PDC	5	0
3	E	402	PDC	1	0
3	B	402	PDC	9	0
3	F	402	PDC	7	0
3	A	402	PDC	7	0

5.7 Other polymers [i](#)

There are no such residues in this entry.

5.8 Polymer linkage issues [i](#)

There are no chain breaks in this entry.

6 Fit of model and data

6.1 Protein, DNA and RNA chains

In the following table, the column labelled ‘#RSRZ > 2’ contains the number (and percentage) of RSRZ outliers, followed by percent RSRZ outliers for the chain as percentile scores relative to all X-ray entries and entries of similar resolution. The OWAB column contains the minimum, median, 95th percentile and maximum values of the occupancy-weighted average B-factor per residue. The column labelled ‘Q < 0.9’ lists the number of (and percentage) of residues with an average occupancy less than 0.9.

Mol	Chain	Analysed	<RSRZ>	#RSRZ>2	OWAB(Å ²)	Q<0.9
1	A	332/332 (100%)	-0.24	4 (1%) 79 80	18, 30, 49, 69	0
1	B	332/332 (100%)	-0.39	3 (0%) 84 86	16, 24, 40, 69	0
1	C	332/332 (100%)	-0.41	4 (1%) 79 80	18, 28, 47, 85	0
1	D	332/332 (100%)	-0.28	2 (0%) 89 90	20, 30, 45, 79	0
1	E	332/332 (100%)	-0.28	2 (0%) 89 90	21, 35, 52, 66	0
1	F	332/332 (100%)	0.04	16 (4%) 30 32	22, 37, 72, 89	0
All	All	1992/1992 (100%)	-0.26	31 (1%) 72 74	16, 30, 54, 89	0

All (31) RSRZ outliers are listed below:

Mol	Chain	Res	Type	RSRZ
1	F	1	MET	6.4
1	F	43	GLY	5.0
1	F	45	VAL	4.8
1	D	1	MET	4.0
1	C	1	MET	3.9
1	E	1	MET	3.7
1	A	313	GLU	3.7
1	B	1	MET	3.5
1	A	32	HIS	3.5
1	F	25	GLY	3.5
1	A	1	MET	3.1
1	C	34	LYS	3.0
1	F	48	VAL	3.0
1	F	21	PHE	2.8
1	F	24	GLY	2.8
1	C	43	GLY	2.7
1	B	332	ARG	2.6
1	B	35	GLY	2.6
1	F	223	ALA	2.4

Continued on next page...

Continued from previous page...

Mol	Chain	Res	Type	RSRZ
1	F	40	LEU	2.3
1	F	39	LEU	2.3
1	E	44	LYS	2.2
1	F	42	ASP	2.2
1	A	33	SER	2.2
1	C	35	GLY	2.2
1	F	32	HIS	2.2
1	F	17	LEU	2.1
1	F	149	GLU	2.1
1	F	22	GLY	2.0
1	F	18	LYS	2.0
1	D	332	ARG	2.0

6.2 Non-standard residues in protein, DNA, RNA chains [i](#)

There are no non-standard protein/DNA/RNA residues in this entry.

6.3 Carbohydrates [i](#)

There are no monosaccharides in this entry.

6.4 Ligands [i](#)

In the following table, the Atoms column lists the number of modelled atoms in the group and the number defined in the chemical component dictionary. The B-factors column lists the minimum, median, 95th percentile and maximum values of B factors of atoms in the group. The column labelled 'Q< 0.9' lists the number of atoms with occupancy less than 0.9.

Mol	Type	Chain	Res	Atoms	RSCC	RSR	B-factors(Å ²)	Q<0.9
3	PDC	D	402	12/12	0.84	0.27	35,48,51,55	0
3	PDC	F	402	12/12	0.87	0.21	42,48,55,57	0
3	PDC	B	402	12/12	0.88	0.21	26,34,39,52	0
3	PDC	C	402	12/12	0.88	0.19	27,39,44,46	0
3	PDC	A	402	12/12	0.91	0.16	25,35,42,44	0
3	PDC	E	402	12/12	0.92	0.15	31,37,42,43	0
2	ZN	C	401	1/1	0.98	0.08	25,25,25,25	0
2	ZN	F	401	1/1	0.99	0.07	35,35,35,35	0
2	ZN	E	401	1/1	1.00	0.10	31,31,31,31	0
2	ZN	B	401	1/1	1.00	0.08	22,22,22,22	0
2	ZN	A	401	1/1	1.00	0.08	25,25,25,25	0

Continued on next page...

Continued from previous page...

Mol	Type	Chain	Res	Atoms	RSCC	RSR	B-factors(\AA^2)	Q<0.9
2	ZN	D	401	1/1	1.00	0.04	28,28,28,28	0

6.5 Other polymers [i](#)

There are no such residues in this entry.