



# Full wwPDB X-ray Structure Validation Report ⓘ

May 14, 2020 – 12:30 am BST

PDB ID : 4CF6  
Title : Crystal structure of the complex of the P187S variant of human NAD(P)  
H:quinone oxidoreductase with Cibacron blue at 2.7 Å resolution  
Authors : Lienhart, W.D.; Gudipati, V.; Uhl, M.K.; Binter, A.; Pulido, S.; Saf, R.;  
Zanger, K.; Gruber, K.; Macheroux, P.  
Deposited on : 2013-11-13  
Resolution : 2.69 Å(reported)

This is a Full wwPDB X-ray Structure Validation Report for a publicly released PDB entry.

We welcome your comments at [validation@mail.wwpdb.org](mailto:validation@mail.wwpdb.org)

A user guide is available at

<https://www.wwpdb.org/validation/2017/XrayValidationReportHelp>

with specific help available everywhere you see the ⓘ symbol.

---

The following versions of software and data (see [references ⓘ](#)) were used in the production of this report:

MolProbity : 4.02b-467  
Mogul : 1.8.5 (274361), CSD as541be (2020)  
Xtriage (Phenix) : 1.13  
EDS : 2.11  
buster-report : 1.1.7 (2018)  
Percentile statistics : 20191225.v01 (using entries in the PDB archive December 25th 2019)  
Refmac : 5.8.0158  
CCP4 : 7.0.044 (Gargrove)  
Ideal geometry (proteins) : Engh & Huber (2001)  
Ideal geometry (DNA, RNA) : Parkinson et al. (1996)  
Validation Pipeline (wwPDB-VP) : 2.11

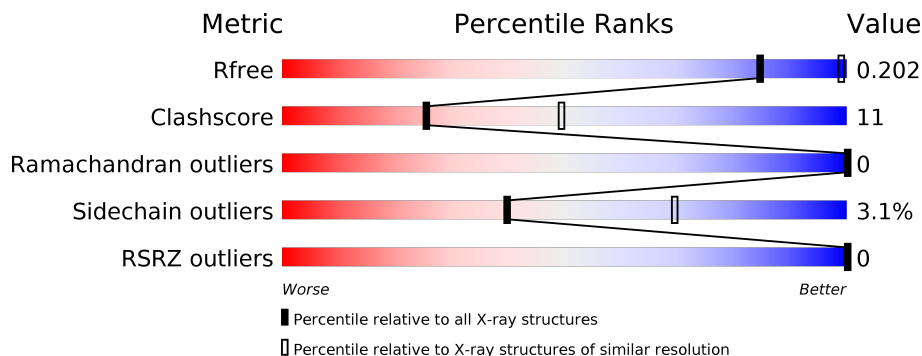
# 1 Overall quality at a glance

The following experimental techniques were used to determine the structure:

*X-RAY DIFFRACTION*

The reported resolution of this entry is 2.69 Å.

Percentile scores (ranging between 0-100) for global validation metrics of the entry are shown in the following graphic. The table shows the number of entries on which the scores are based.



Metric	Whole archive (#Entries)	Similar resolution (#Entries, resolution range(Å))
$R_{free}$	130704	2808 (2.70-2.70)
Clashscore	141614	3122 (2.70-2.70)
Ramachandran outliers	138981	3069 (2.70-2.70)
Sidechain outliers	138945	3069 (2.70-2.70)
RSRZ outliers	127900	2737 (2.70-2.70)

The table below summarises the geometric issues observed across the polymeric chains and their fit to the electron density. The red, orange, yellow and green segments on the lower bar indicate the fraction of residues that contain outliers for  $\geq 3$ , 2, 1 and 0 types of geometric quality criteria respectively. A grey segment represents the fraction of residues that are not modelled. The numeric value for each fraction is indicated below the corresponding segment, with a dot representing fractions  $\leq 5\%$ . The upper red bar (where present) indicates the fraction of residues that have poor fit to the electron density. The numeric value is given above the bar.

Mol	Chain	Length	Quality of chain
1	A	294	 66% 26% • 8%
1	B	294	 71% 20% • 8%

## 2 Entry composition i

There are 4 unique types of molecules in this entry. The entry contains 4531 atoms, of which 0 are hydrogens and 0 are deuteriums.

In the tables below, the ZeroOcc column contains the number of atoms modelled with zero occupancy, the AltConf column contains the number of residues with at least one atom in alternate conformation and the Trace column contains the number of residues modelled with at most 2 atoms.

- Molecule 1 is a protein called NAD(P)H DEHYDROGENASE [QUINONE] 1.

Mol	Chain	Residues	Atoms					ZeroOcc	AltConf	Trace
			Total	C	N	O	S			
1	A	270	Total	C	N	O	S	0	0	0
			2153	1399	361	386	7			
1	B	271	Total	C	N	O	S	0	0	0
			2163	1405	363	388	7			

There are 42 discrepancies between the modelled and reference sequences:

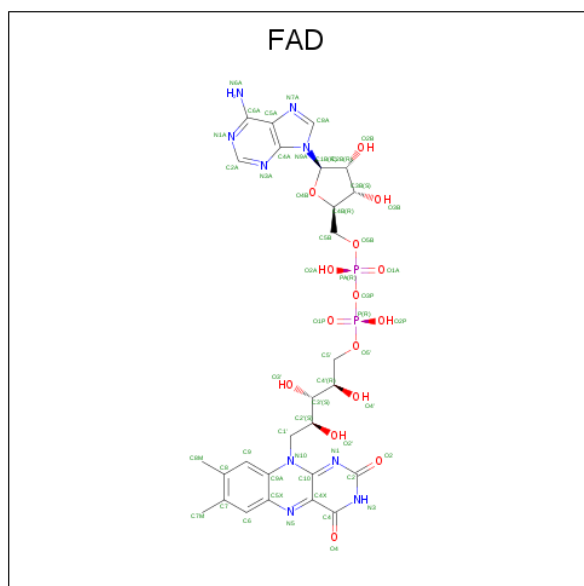
Chain	Residue	Modelled	Actual	Comment	Reference
A	-19	MET	-	expression tag	UNP P15559
A	-18	GLY	-	expression tag	UNP P15559
A	-17	SER	-	expression tag	UNP P15559
A	-16	SER	-	expression tag	UNP P15559
A	-15	HIS	-	expression tag	UNP P15559
A	-14	HIS	-	expression tag	UNP P15559
A	-13	HIS	-	expression tag	UNP P15559
A	-12	HIS	-	expression tag	UNP P15559
A	-11	HIS	-	expression tag	UNP P15559
A	-10	HIS	-	expression tag	UNP P15559
A	-9	SER	-	expression tag	UNP P15559
A	-8	SER	-	expression tag	UNP P15559
A	-7	GLY	-	expression tag	UNP P15559
A	-6	LEU	-	expression tag	UNP P15559
A	-5	VAL	-	expression tag	UNP P15559
A	-4	PRO	-	expression tag	UNP P15559
A	-3	ARG	-	expression tag	UNP P15559
A	-2	GLY	-	expression tag	UNP P15559
A	-1	SER	-	expression tag	UNP P15559
A	0	HIS	-	expression tag	UNP P15559
A	187	SER	PRO	engineered mutation	UNP P15559
B	-19	MET	-	expression tag	UNP P15559
B	-18	GLY	-	expression tag	UNP P15559
B	-17	SER	-	expression tag	UNP P15559
B	-16	SER	-	expression tag	UNP P15559

*Continued on next page...*

Continued from previous page...

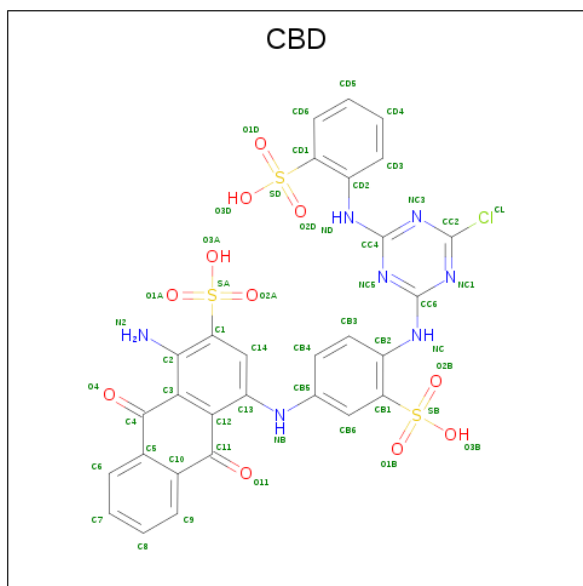
Chain	Residue	Modelled	Actual	Comment	Reference
B	-15	HIS	-	expression tag	UNP P15559
B	-14	HIS	-	expression tag	UNP P15559
B	-13	HIS	-	expression tag	UNP P15559
B	-12	HIS	-	expression tag	UNP P15559
B	-11	HIS	-	expression tag	UNP P15559
B	-10	HIS	-	expression tag	UNP P15559
B	-9	SER	-	expression tag	UNP P15559
B	-8	SER	-	expression tag	UNP P15559
B	-7	GLY	-	expression tag	UNP P15559
B	-6	LEU	-	expression tag	UNP P15559
B	-5	VAL	-	expression tag	UNP P15559
B	-4	PRO	-	expression tag	UNP P15559
B	-3	ARG	-	expression tag	UNP P15559
B	-2	GLY	-	expression tag	UNP P15559
B	-1	SER	-	expression tag	UNP P15559
B	0	HIS	-	expression tag	UNP P15559
B	187	SER	PRO	engineered mutation	UNP P15559

- Molecule 2 is FLAVIN-ADENINE DINUCLEOTIDE (three-letter code: FAD) (formula:  $C_{27}H_{33}N_9O_{15}P_2$ ).



Mol	Chain	Residues	Atoms				ZeroOcc	AltConf	
			Total	C	N	O			P
2	A	1	Total	C	N	O	P	0	0
			53	27	9	15	2		
2	B	1	Total	C	N	O	P	0	0
			53	27	9	15	2		

- Molecule 3 is CIBACRON BLUE (three-letter code: CBD) (formula:  $C_{29}H_{20}ClN_7O_{11}S_3$ ).



Mol	Chain	Residues	Atoms					ZeroOcc	AltConf		
			Total	C	Cl	N	O			S	
3	A	1	Total	51	29	1	7	11	3	0	0
3	B	1	Total	51	29	1	7	11	3	0	0

- Molecule 4 is water.

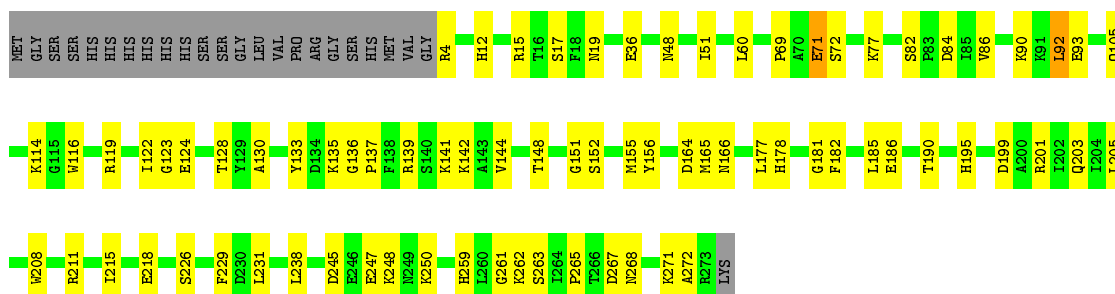
Mol	Chain	Residues	Atoms	ZeroOcc	AltConf
4	A	4	Total 4 O 4	0	0
4	B	3	Total 3 O 3	0	0

### 3 Residue-property plots [i](#)

These plots are drawn for all protein, RNA and DNA chains in the entry. The first graphic for a chain summarises the proportions of the various outlier classes displayed in the second graphic. The second graphic shows the sequence view annotated by issues in geometry and electron density. Residues are color-coded according to the number of geometric quality criteria for which they contain at least one outlier: green = 0, yellow = 1, orange = 2 and red = 3 or more. A red dot above a residue indicates a poor fit to the electron density ( $RSRZ > 2$ ). Stretches of 2 or more consecutive residues without any outlier are shown as a green connector. Residues present in the sample, but not in the model, are shown in grey.

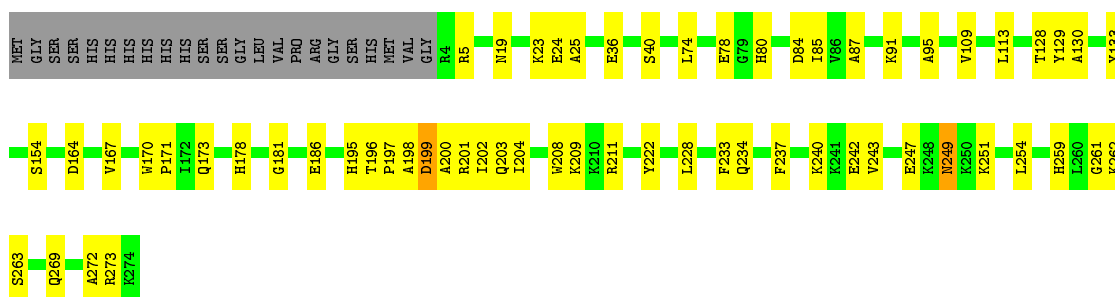
- Molecule 1: NAD(P)H DEHYDROGENASE [QUINONE] 1

Chain A: 



- Molecule 1: NAD(P)H DEHYDROGENASE [QUINONE] 1

Chain B: 



## 4 Data and refinement statistics i

Property	Value	Source
Space group	I 2 2 2	Depositor
Cell constants a, b, c, $\alpha$ , $\beta$ , $\gamma$	104.17Å 104.56Å 118.57Å 90.00° 90.00° 90.00°	Depositor
Resolution (Å)	46.22 – 2.69 46.22 – 2.69	Depositor EDS
% Data completeness (in resolution range)	99.4 (46.22-2.69) 98.3 (46.22-2.69)	Depositor EDS
$R_{merge}$	0.16	Depositor
$R_{sym}$	(Not available)	Depositor
$\langle I/\sigma(I) \rangle$ <sup>1</sup>	1.60 (at 2.69Å)	Xtriage
Refinement program	PHENIX (PHENIX.REFINE)	Depositor
R, $R_{free}$	0.185 , 0.207 0.180 , 0.202	Depositor DCC
$R_{free}$ test set	928 reflections (5.12%)	wwPDB-VP
Wilson B-factor (Å <sup>2</sup> )	48.0	Xtriage
Anisotropy	0.151	Xtriage
Bulk solvent $k_{sol}$ (e/Å <sup>3</sup> ), $B_{sol}$ (Å <sup>2</sup> )	0.38 , 24.2	EDS
L-test for twinning <sup>2</sup>	$\langle  L  \rangle = 0.39$ , $\langle L^2 \rangle = 0.22$	Xtriage
Estimated twinning fraction	0.358 for -k,-h,-l	Xtriage
Reported twinning fraction	0.390 for -K,-H,-L	Depositor
Outliers	0 of 18137 reflections	Xtriage
$F_o, F_c$ correlation	0.94	EDS
Total number of atoms	4531	wwPDB-VP
Average B, all atoms (Å <sup>2</sup> )	41.0	wwPDB-VP

Xtriage's analysis on translational NCS is as follows: *The analyses of the Patterson function reveals a significant off-origin peak that is 48.56 % of the origin peak, indicating pseudo-translational symmetry. The chance of finding a peak of this or larger height randomly in a structure without pseudo-translational symmetry is equal to 8.4505e-05.*

<sup>1</sup>Intensities estimated from amplitudes.

<sup>2</sup>Theoretical values of  $\langle |L| \rangle$ ,  $\langle L^2 \rangle$  for acentric reflections are 0.5, 0.333 respectively for untwinned datasets, and 0.375, 0.2 for perfectly twinned datasets.

## 5 Model quality

### 5.1 Standard geometry

Bond lengths and bond angles in the following residue types are not validated in this section: FAD, CBD

The Z score for a bond length (or angle) is the number of standard deviations the observed value is removed from the expected value. A bond length (or angle) with  $|Z| > 5$  is considered an outlier worth inspection. RMSZ is the root-mean-square of all Z scores of the bond lengths (or angles).

Mol	Chain	Bond lengths		Bond angles	
		RMSZ	# Z  >5	RMSZ	# Z  >5
1	A	0.24	0/2210	0.37	0/2985
1	B	0.24	0/2220	0.37	0/2996
All	All	0.24	0/4430	0.37	0/5981

There are no bond length outliers.

There are no bond angle outliers.

There are no chirality outliers.

There are no planarity outliers.

### 5.2 Too-close contacts

In the following table, the Non-H and H(model) columns list the number of non-hydrogen atoms and hydrogen atoms in the chain respectively. The H(added) column lists the number of hydrogen atoms added and optimized by MolProbity. The Clashes column lists the number of clashes within the asymmetric unit, whereas Symm-Clashes lists symmetry related clashes.

Mol	Chain	Non-H	H(model)	H(added)	Clashes	Symm-Clashes
1	A	2153	0	2149	51	0
1	B	2163	0	2162	41	1
2	A	53	0	31	4	0
2	B	53	0	31	2	0
3	A	51	0	20	8	0
3	B	51	0	20	4	0
4	A	4	0	0	0	0
4	B	3	0	0	0	0
All	All	4531	0	4413	95	1

The all-atom clashscore is defined as the number of clashes found per 1000 atoms (including hydrogen atoms). The all-atom clashscore for this structure is 11.



All (95) close contacts within the same asymmetric unit are listed below, sorted by their clash magnitude.

Atom-1	Atom-2	Interatomic distance (Å)	Clash overlap (Å)
1:B:23:LYS:NZ	1:B:24:GLU:OE2	2.10	0.84
1:B:247:GLU:O	1:B:262:LYS:NZ	2.15	0.80
1:A:92:LEU:O	1:A:141:LYS:NZ	2.20	0.74
1:B:196:THR:O	1:B:201:ARG:NH1	2.20	0.74
1:A:12:HIS:NE2	2:A:1274:FAD:O2P	2.23	0.72
1:A:19:ASN:ND2	2:A:1274:FAD:O1P	2.22	0.71
1:A:77:LYS:HE3	1:A:124:GLU:HG3	1.74	0.68
1:B:19:ASN:ND2	2:B:1275:FAD:O1P	2.25	0.67
1:A:208:TRP:HZ3	1:A:211:ARG:HH11	1.41	0.67
1:B:249:ASN:HD22	1:B:249:ASN:H	1.45	0.65
3:A:1275:CBD:NC1	3:A:1275:CBD:HB3	2.11	0.64
1:A:267:ASP:HB3	1:A:271:LYS:HB2	1.80	0.63
1:A:114:LYS:NZ	1:B:109:VAL:O	2.28	0.62
1:A:128:THR:HG22	1:A:130:ALA:H	1.66	0.60
1:B:259:HIS:CD2	1:B:261:GLY:H	2.19	0.59
1:B:84:ASP:OD1	1:B:85:ILE:N	2.35	0.59
1:A:263:SER:OG	1:B:261:GLY:O	2.20	0.59
1:B:5:ARG:HB2	1:B:95:ALA:HA	1.84	0.59
1:B:222:TYR:HB2	1:B:273:ARG:HG2	1.83	0.58
1:A:247:GLU:O	1:A:262:LYS:NZ	2.37	0.58
1:B:173:GLN:NE2	1:B:269:GLN:OE1	2.36	0.57
1:A:248:LYS:HB2	1:A:248:LYS:NZ	2.21	0.55
1:B:154:SER:OG	3:B:1276:CBD:O3D	2.19	0.54
1:A:259:HIS:CD2	1:A:261:GLY:H	2.26	0.53
1:A:259:HIS:O	1:A:262:LYS:HG2	2.09	0.52
1:A:164:ASP:OD2	1:A:166:ASN:HB2	2.10	0.52
1:A:93:GLU:HA	1:A:141:LYS:NZ	2.25	0.51
1:A:156:TYR:HB3	1:A:165:MET:HB2	1.92	0.51
1:B:133:TYR:O	1:B:181:GLY:HA2	2.09	0.51
3:B:1276:CBD:HB4	3:B:1276:CBD:H14	1.93	0.51
1:A:60:LEU:HD22	1:A:71:GLU:HG2	1.92	0.50
1:A:265:PRO:HB2	1:A:268:ASN:HB2	1.93	0.50
1:A:245:ASP:HA	1:A:248:LYS:NZ	2.28	0.49
1:A:238:LEU:HD21	1:B:154:SER:HB2	1.95	0.49
1:B:25:ALA:HB1	1:B:209:LYS:HD2	1.95	0.49
1:A:259:HIS:HD2	1:A:261:GLY:H	1.61	0.48
1:A:247:GLU:HA	1:A:250:LYS:HG3	1.94	0.48
3:B:1276:CBD:NB	3:B:1276:CBD:O11	2.44	0.48
1:A:84:ASP:N	1:A:84:ASP:OD1	2.42	0.48
1:A:155:MET:HG2	1:B:237:PHE:HB2	1.96	0.47

*Continued on next page...*

*Continued from previous page...*

Atom-1	Atom-2	Interatomic distance (Å)	Clash overlap (Å)
1:A:152:SER:H	1:A:155:MET:HE3	1.80	0.47
1:A:93:GLU:HA	1:A:141:LYS:HZ1	1.79	0.47
1:A:148:THR:HA	1:A:190:THR:HB	1.95	0.47
1:A:226:SER:HA	1:A:229:PHE:HD1	1.80	0.46
1:B:109:VAL:HB	1:B:113:LEU:HD23	1.96	0.46
1:B:186:GLU:O	1:B:211:ARG:NH2	2.36	0.46
1:B:233:PHE:CE1	1:B:237:PHE:HE2	2.33	0.46
1:B:78:GLU:HB2	1:B:80:HIS:HD2	1.80	0.46
1:B:128:THR:HG22	1:B:130:ALA:H	1.81	0.45
1:B:87:ALA:O	1:B:91:LYS:HG3	2.16	0.45
1:B:78:GLU:HB2	1:B:80:HIS:CD2	2.51	0.45
1:B:199:ASP:O	1:B:203:GLN:HG2	2.16	0.45
1:A:186:GLU:OE2	1:A:272:ALA:N	2.39	0.45
3:A:1275:CBD:NB	3:A:1275:CBD:O11	2.47	0.45
1:A:177:LEU:O	1:A:182:PHE:HB2	2.17	0.45
1:B:249:ASN:HD22	1:B:249:ASN:N	2.11	0.45
1:B:200:ALA:O	1:B:204:ILE:HG13	2.18	0.44
1:A:48:ASN:O	1:A:119:ARG:NH1	2.48	0.44
1:A:86:VAL:HG12	1:A:90:LYS:HE3	2.00	0.44
1:B:197:PRO:O	1:B:201:ARG:HG3	2.17	0.43
3:B:1276:CBD:HB4	3:B:1276:CBD:C14	2.47	0.43
3:A:1275:CBD:HB4	1:B:129:TYR:CE1	2.54	0.43
1:A:92:LEU:HD11	1:A:116:TRP:CH2	2.53	0.43
1:A:82:SER:HB3	1:A:84:ASP:OD1	2.19	0.43
1:B:164:ASP:HB3	1:B:167:VAL:HG23	1.99	0.43
1:B:5:ARG:HE	1:B:36:GLU:HB3	1.83	0.43
1:B:74:LEU:HD11	1:B:78:GLU:OE2	2.18	0.43
1:A:195:HIS:HE1	3:A:1275:CBD:CB2	2.32	0.43
1:A:133:TYR:HD1	1:A:178:HIS:CD2	2.38	0.42
3:A:1275:CBD:O1B	3:A:1275:CBD:NC	2.51	0.42
3:A:1275:CBD:ND	3:A:1275:CBD:O2D	2.53	0.42
1:A:133:TYR:O	1:A:181:GLY:HA2	2.19	0.42
1:B:186:GLU:OE2	1:B:272:ALA:N	2.44	0.41
1:B:228:LEU:HB3	1:B:243:VAL:HG11	2.02	0.41
1:B:84:ASP:OD1	1:B:85:ILE:HG13	2.20	0.41
1:B:170:TRP:HB3	1:B:171:PRO:HD3	2.02	0.41
1:A:105:GLN:HA	2:A:1274:FAD:C5X	2.50	0.41
1:A:186:GLU:O	1:A:211:ARG:NH2	2.44	0.41
1:B:208:TRP:HZ3	1:B:211:ARG:HD3	1.85	0.41
1:A:123:GLY:O	1:A:124:GLU:HB2	2.21	0.41
3:A:1275:CBD:HB4	1:B:129:TYR:CZ	2.56	0.41

*Continued on next page...*

Continued from previous page...

Atom-1	Atom-2	Interatomic distance (Å)	Clash overlap (Å)
1:B:240:LYS:HB2	1:B:243:VAL:HG23	2.02	0.41
1:A:51:ILE:HG22	1:A:119:ARG:HG2	2.03	0.41
1:B:198:ALA:O	1:B:202:ILE:HG13	2.20	0.41
1:A:136:GLY:HA2	1:A:137:PRO:HD3	1.93	0.41
1:A:142:LYS:HD3	1:A:185:LEU:HD21	2.03	0.41
1:A:199:ASP:O	1:A:203:GLN:HG2	2.21	0.41
1:A:201:ARG:O	1:A:205:LEU:HD12	2.21	0.40
1:A:69:PRO:HG3	2:B:1275:FAD:HM81	2.02	0.40
1:A:17:SER:HB2	2:A:1274:FAD:O2P	2.21	0.40
1:A:135:LYS:HA	1:A:139:ARG:HD2	2.02	0.40
1:A:151:GLY:HA2	3:A:1275:CBP:HB6	2.02	0.40
1:B:133:TYR:HA	1:B:178:HIS:O	2.21	0.40
1:A:215:ILE:HA	1:A:218:GLU:HG3	2.04	0.40
1:A:72:SER:HB2	1:A:122:ILE:HD12	2.03	0.40

All (1) symmetry-related close contacts are listed below. The label for Atom-2 includes the symmetry operator and encoded unit-cell translations to be applied.

Atom-1	Atom-2	Interatomic distance (Å)	Clash overlap (Å)
1:B:251:LYS:NZ	1:B:263:SER:OG[2_555]	2.04	0.16

## 5.3 Torsion angles [i](#)

### 5.3.1 Protein backbone [i](#)

In the following table, the Percentiles column shows the percent Ramachandran outliers of the chain as a percentile score with respect to all X-ray entries followed by that with respect to entries of similar resolution.

The Analysed column shows the number of residues for which the backbone conformation was analysed, and the total number of residues.

Mol	Chain	Analysed	Favoured	Allowed	Outliers	Percentiles	
1	A	268/294 (91%)	250 (93%)	18 (7%)	0	100	100
1	B	269/294 (92%)	252 (94%)	17 (6%)	0	100	100
All	All	537/588 (91%)	502 (94%)	35 (6%)	0	100	100

There are no Ramachandran outliers to report.

### 5.3.2 Protein sidechains [i](#)

In the following table, the Percentiles column shows the percent sidechain outliers of the chain as a percentile score with respect to all X-ray entries followed by that with respect to entries of similar resolution.

The Analysed column shows the number of residues for which the sidechain conformation was analysed, and the total number of residues.

Mol	Chain	Analysed	Rotameric	Outliers	Percentiles	
1	A	225/245 (92%)	218 (97%)	7 (3%)	40	69
1	B	226/245 (92%)	219 (97%)	7 (3%)	40	69
All	All	451/490 (92%)	437 (97%)	14 (3%)	40	69

All (14) residues with a non-rotameric sidechain are listed below:

Mol	Chain	Res	Type
1	A	4	ARG
1	A	15	ARG
1	A	36	GLU
1	A	71	GLU
1	A	92	LEU
1	A	144	VAL
1	A	231	LEU
1	B	40	SER
1	B	195	HIS
1	B	199	ASP
1	B	234	GLN
1	B	242	GLU
1	B	249	ASN
1	B	254	LEU

Some sidechains can be flipped to improve hydrogen bonding and reduce clashes. All (6) such sidechains are listed below:

Mol	Chain	Res	Type
1	A	162	HIS
1	A	249	ASN
1	B	65	ASN
1	B	80	HIS
1	B	105	GLN
1	B	249	ASN

### 5.3.3 RNA [i](#)

There are no RNA molecules in this entry.

## 5.4 Non-standard residues in protein, DNA, RNA chains [i](#)

There are no non-standard protein/DNA/RNA residues in this entry.

## 5.5 Carbohydrates [i](#)

There are no carbohydrates in this entry.

## 5.6 Ligand geometry [i](#)

4 ligands are modelled in this entry.

In the following table, the Counts columns list the number of bonds (or angles) for which Mogul statistics could be retrieved, the number of bonds (or angles) that are observed in the model and the number of bonds (or angles) that are defined in the Chemical Component Dictionary. The Link column lists molecule types, if any, to which the group is linked. The Z score for a bond length (or angle) is the number of standard deviations the observed value is removed from the expected value. A bond length (or angle) with  $|Z| > 2$  is considered an outlier worth inspection. RMSZ is the root-mean-square of all Z scores of the bond lengths (or angles).

Mol	Type	Chain	Res	Link	Bond lengths			Bond angles		
					Counts	RMSZ	# Z  > 2	Counts	RMSZ	# Z  > 2
3	CBD	A	1275	-	53,56,56	1.69	8 (15%)	78,87,87	2.19	14 (17%)
3	CBD	B	1276	-	53,56,56	1.70	10 (18%)	78,87,87	2.09	19 (24%)
2	FAD	A	1274	-	51,58,58	1.84	6 (11%)	60,89,89	1.97	11 (18%)
2	FAD	B	1275	-	51,58,58	1.83	5 (9%)	60,89,89	1.92	12 (20%)

In the following table, the Chirals column lists the number of chiral outliers, the number of chiral centers analysed, the number of these observed in the model and the number defined in the Chemical Component Dictionary. Similar counts are reported in the Torsion and Rings columns. '-' means no outliers of that kind were identified.

Mol	Type	Chain	Res	Link	Chirals	Torsions	Rings
3	CBD	A	1275	-	-	21/30/46/46	0/6/6/6
3	CBD	B	1276	-	-	17/30/46/46	0/6/6/6
2	FAD	A	1274	-	-	2/30/50/50	0/6/6/6
2	FAD	B	1275	-	-	5/30/50/50	0/6/6/6

All (29) bond length outliers are listed below:

Mol	Chain	Res	Type	Atoms	Z	Observed(Å)	Ideal(Å)
2	A	1274	FAD	C4X-C10	9.56	1.48	1.38
2	B	1275	FAD	C4X-C10	9.53	1.48	1.38
3	A	1275	CBD	CC6-NC	4.68	1.46	1.36
3	B	1276	CBD	C5-C4	-4.44	1.39	1.48
2	B	1275	FAD	C4-C4X	4.22	1.48	1.41
2	A	1274	FAD	C4-C4X	4.20	1.48	1.41
3	A	1275	CBD	C5-C4	-4.19	1.39	1.48
3	B	1276	CBD	CC6-NC	4.04	1.44	1.36
3	A	1275	CBD	C10-C11	-4.02	1.40	1.48
3	B	1276	CBD	CC4-ND	3.91	1.44	1.36
3	B	1276	CBD	C10-C11	-3.74	1.40	1.48
3	A	1275	CBD	CC4-ND	3.65	1.43	1.36
3	A	1275	CBD	C3-C4	-3.61	1.39	1.47
3	B	1276	CBD	C3-C4	-3.60	1.39	1.47
2	A	1274	FAD	C9A-C5X	3.57	1.49	1.42
2	B	1275	FAD	C9A-C5X	3.45	1.49	1.42
3	A	1275	CBD	C12-C11	-3.39	1.39	1.47
2	B	1275	FAD	C8-C7	3.17	1.48	1.40
2	A	1274	FAD	C8-C7	3.14	1.48	1.40
3	B	1276	CBD	C12-C11	-3.11	1.40	1.47
3	B	1276	CBD	C2-C1	-3.06	1.38	1.42
3	A	1275	CBD	C2-C1	-2.89	1.38	1.42
3	B	1276	CBD	CB5-NB	2.58	1.46	1.40
2	A	1274	FAD	C5A-C4A	2.47	1.47	1.40
2	B	1275	FAD	C5A-C4A	2.43	1.47	1.40
3	B	1276	CBD	CB2-NC	2.40	1.46	1.39
3	A	1275	CBD	CB2-NC	2.34	1.46	1.39
2	A	1274	FAD	C9A-N10	2.11	1.41	1.38
3	B	1276	CBD	C2-N2	2.02	1.43	1.37

All (56) bond angle outliers are listed below:

Mol	Chain	Res	Type	Atoms	Z	Observed(°)	Ideal(°)
3	A	1275	CBD	CC6-NC1-CC2	9.54	121.61	112.43
2	A	1274	FAD	C4-N3-C2	8.48	122.31	115.14
2	B	1275	FAD	C4-N3-C2	8.22	122.08	115.14
3	B	1276	CBD	CC4-NC3-CC2	7.77	119.91	112.43
3	A	1275	CBD	CC4-NC3-CC2	7.76	119.90	112.43
3	B	1276	CBD	CC6-NC1-CC2	7.47	119.62	112.43
3	A	1275	CBD	NC3-CC2-NC1	-5.84	119.28	129.57
2	A	1274	FAD	C4-C4X-C10	-5.49	116.31	119.95
3	B	1276	CBD	NC3-CC2-NC1	-5.26	120.29	129.57

*Continued on next page...*

*Continued from previous page...*

Mol	Chain	Res	Type	Atoms	Z	Observed(°)	Ideal(°)
2	B	1275	FAD	C4-C4X-C10	-5.14	116.55	119.95
3	A	1275	CBD	NC5-CC6-NC1	-4.90	118.49	126.23
3	A	1275	CBD	CB5-NB-C13	-4.89	113.88	126.66
2	A	1274	FAD	C1'-N10-C9A	4.41	121.77	118.29
3	A	1275	CBD	C1-C2-N2	-4.22	118.37	122.64
3	B	1276	CBD	CB1-CB2-NC	4.12	125.34	121.45
3	B	1276	CBD	NC5-CC6-NC1	-4.00	119.91	126.23
3	B	1276	CBD	NC5-CC4-NC3	-3.96	119.96	126.23
2	B	1275	FAD	C4X-N5-C5X	3.94	120.71	116.77
3	B	1276	CBD	CC6-NC5-CC4	3.78	120.31	113.89
3	B	1276	CBD	CL-CC2-NC1	3.78	120.55	115.15
3	A	1275	CBD	CL-CC2-NC3	3.75	120.50	115.15
2	A	1274	FAD	C4X-N5-C5X	3.73	120.50	116.77
2	A	1274	FAD	C4X-C4-N3	-3.66	118.43	123.43
3	A	1275	CBD	CC6-NC5-CC4	3.57	119.95	113.89
3	A	1275	CBD	CL-CC2-NC1	3.55	120.22	115.15
2	B	1275	FAD	C4X-C4-N3	-3.53	118.60	123.43
3	A	1275	CBD	NC5-CC4-NC3	-3.45	120.78	126.23
3	B	1276	CBD	CD2-ND-CC4	-3.40	119.34	129.60
2	A	1274	FAD	N3A-C2A-N1A	-3.30	123.51	128.68
2	B	1275	FAD	N3A-C2A-N1A	-3.24	123.62	128.68
3	B	1276	CBD	C12-C13-NB	-3.18	117.04	120.52
2	A	1274	FAD	C4-C4X-N5	3.15	122.20	118.60
2	B	1275	FAD	P-O3P-PA	-3.11	122.14	132.83
3	B	1276	CBD	O2D-SD-CD1	3.03	111.64	106.51
2	B	1275	FAD	C4-C4X-N5	2.91	121.92	118.60
2	B	1275	FAD	C1'-N10-C9A	2.88	120.56	118.29
2	B	1275	FAD	C1'-N10-C10	2.86	120.97	118.41
2	B	1275	FAD	C4A-C5A-N7A	-2.85	106.43	109.40
2	B	1275	FAD	C5X-C9A-N10	2.85	119.78	117.72
3	B	1276	CBD	C1-C2-N2	-2.82	119.79	122.64
2	A	1274	FAD	C9A-N10-C10	-2.81	118.22	121.91
3	B	1276	CBD	CL-CC2-NC3	2.81	119.16	115.15
2	A	1274	FAD	C5X-C9A-N10	2.74	119.70	117.72
3	A	1275	CBD	CD1-CD2-ND	-2.74	118.86	121.45
3	B	1276	CBD	O1B-SB-CB1	2.72	111.10	106.51
2	A	1274	FAD	C4A-C5A-N7A	-2.71	106.58	109.40
2	B	1275	FAD	C9A-N10-C10	-2.63	118.47	121.91
3	A	1275	CBD	C3-C12-C13	-2.62	117.99	119.74
3	B	1276	CBD	CB3-CB2-NC	-2.59	116.04	121.39
2	A	1274	FAD	P-O3P-PA	-2.58	123.98	132.83
3	A	1275	CBD	CB1-CB2-NC	-2.51	119.07	121.45

*Continued on next page...*

*Continued from previous page...*

Mol	Chain	Res	Type	Atoms	Z	Observed(°)	Ideal(°)
3	B	1276	CBD	CB5-CB6-CB1	2.33	121.65	119.27
3	B	1276	CBD	C2-C1-SA	-2.20	119.06	121.56
3	B	1276	CBD	O2A-SA-C1	2.08	110.03	106.51
3	A	1275	CBD	CD2-ND-CC4	-2.06	123.39	129.60
3	B	1276	CBD	O2B-SB-CB1	2.05	109.98	106.51

There are no chirality outliers.

All (45) torsion outliers are listed below:

Mol	Chain	Res	Type	Atoms
3	A	1275	CBD	C2-C1-SA-O3A
3	A	1275	CBD	C14-C1-SA-O3A
3	A	1275	CBD	CB2-CB1-SB-O3B
3	A	1275	CBD	CB6-CB1-SB-O1B
3	A	1275	CBD	CB6-CB1-SB-O2B
3	A	1275	CBD	NC3-CC4-ND-CD2
3	A	1275	CBD	NC5-CC4-ND-CD2
3	A	1275	CBD	CD1-CD2-ND-CC4
3	A	1275	CBD	CD2-CD1-SD-O3D
3	A	1275	CBD	CD6-CD1-SD-O1D
3	A	1275	CBD	CD6-CD1-SD-O2D
3	B	1276	CBD	C2-C1-SA-O3A
3	B	1276	CBD	C14-C1-SA-O1A
3	B	1276	CBD	C14-C1-SA-O2A
3	B	1276	CBD	CB1-CB2-NC-CC6
3	B	1276	CBD	CB3-CB2-NC-CC6
3	B	1276	CBD	NC1-CC6-NC-CB2
3	B	1276	CBD	NC5-CC6-NC-CB2
3	B	1276	CBD	CD1-CD2-ND-CC4
3	B	1276	CBD	CD3-CD2-ND-CC4
3	B	1276	CBD	CD6-CD1-SD-O1D
3	B	1276	CBD	CD6-CD1-SD-O2D
2	A	1274	FAD	C3'-C4'-C5'-O5'
2	A	1274	FAD	O4'-C4'-C5'-O5'
2	B	1275	FAD	C5B-O5B-PA-O1A
2	B	1275	FAD	C5B-O5B-PA-O2A
3	A	1275	CBD	C14-C1-SA-O1A
3	A	1275	CBD	C14-C1-SA-O2A
3	B	1276	CBD	CD2-CD1-SD-O1D
3	A	1275	CBD	CB6-CB1-SB-O3B
3	A	1275	CBD	CD6-CD1-SD-O3D
3	B	1276	CBD	C14-C1-SA-O3A

*Continued on next page...*



*Continued from previous page...*

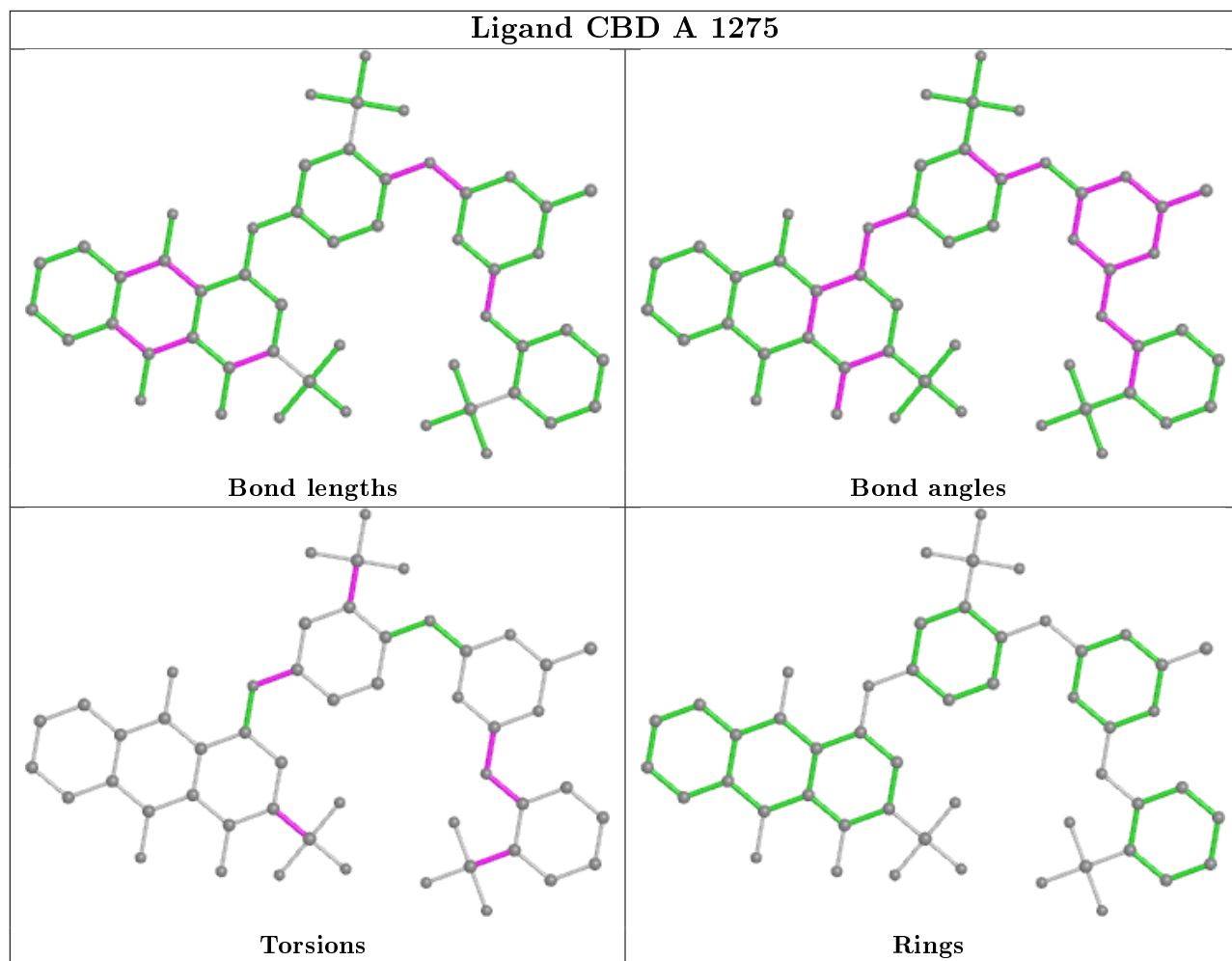
Mol	Chain	Res	Type	Atoms
3	B	1276	CBD	CD2-CD1-SD-O3D
3	B	1276	CBD	CD6-CD1-SD-O3D
3	A	1275	CBD	CB6-CB5-NB-C13
3	A	1275	CBD	CD2-CD1-SD-O1D
3	B	1276	CBD	C2-C1-SA-O2A
3	B	1276	CBD	CD2-CD1-SD-O2D
2	B	1275	FAD	PA-O3P-P-O2P
3	A	1275	CBD	CD3-CD2-ND-CC4
3	A	1275	CBD	CB4-CB5-NB-C13
3	A	1275	CBD	C2-C1-SA-O2A
3	A	1275	CBD	CB2-CB1-SB-O2B
2	B	1275	FAD	C5B-O5B-PA-O3P
2	B	1275	FAD	C5'-O5'-P-O3P

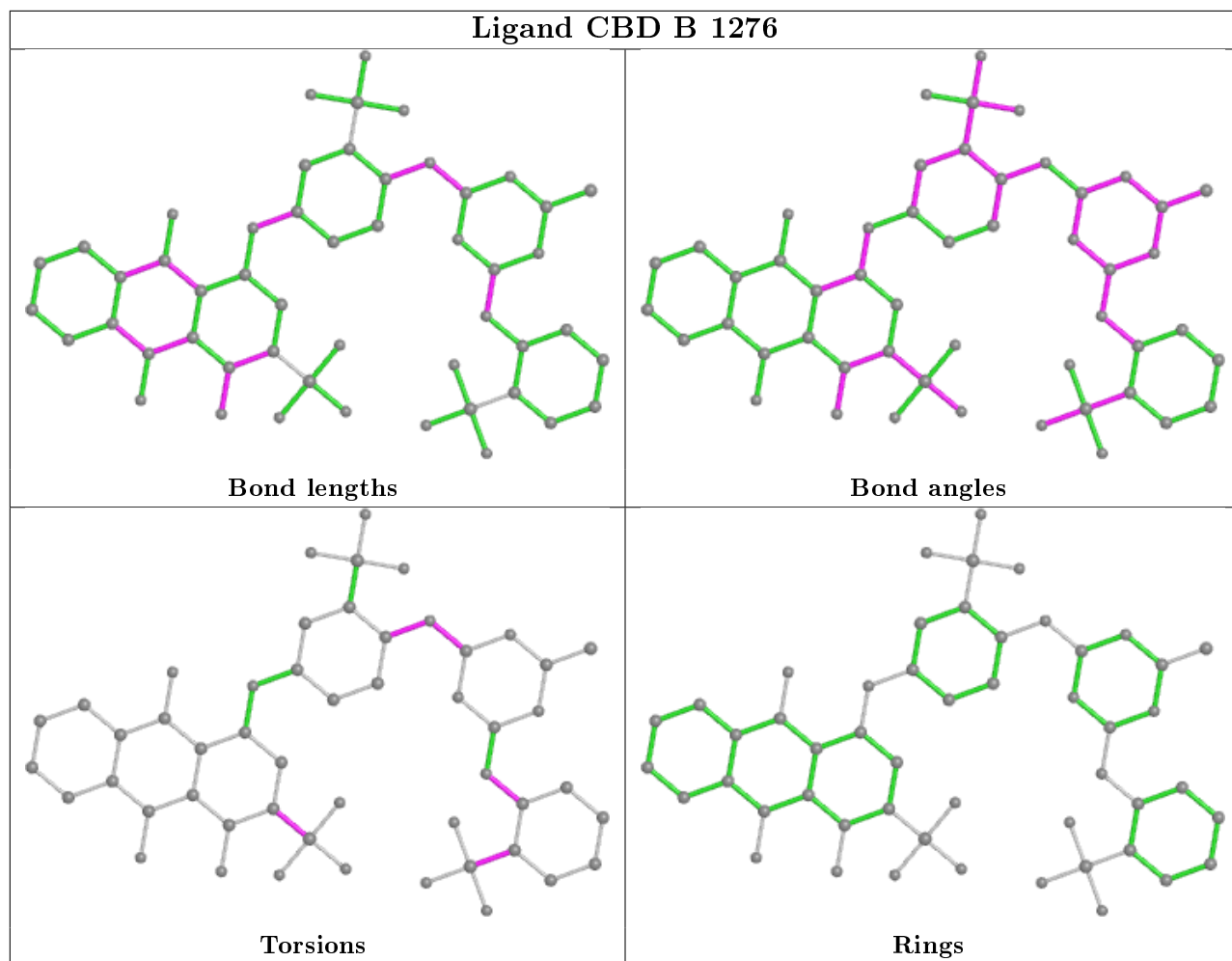
There are no ring outliers.

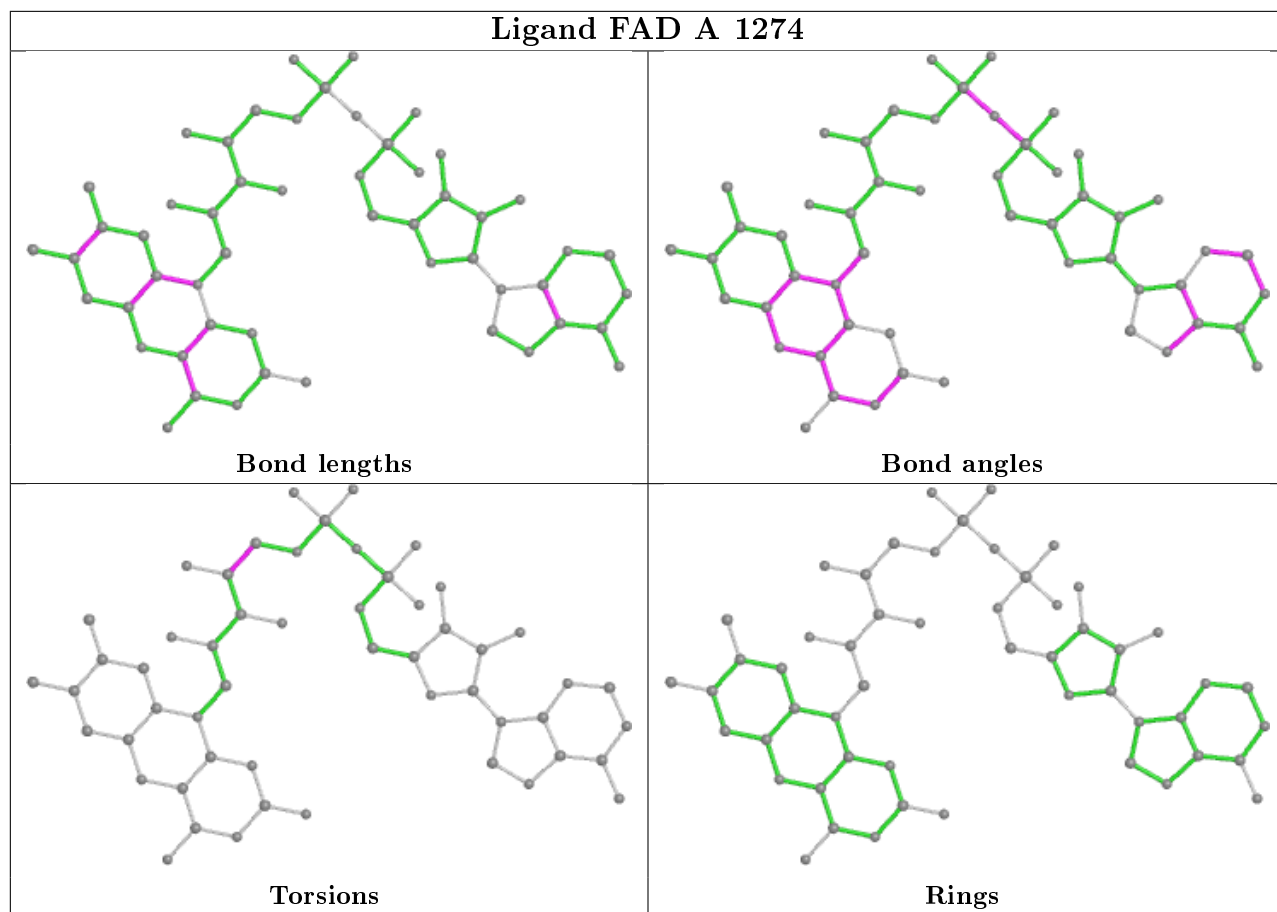
4 monomers are involved in 18 short contacts:

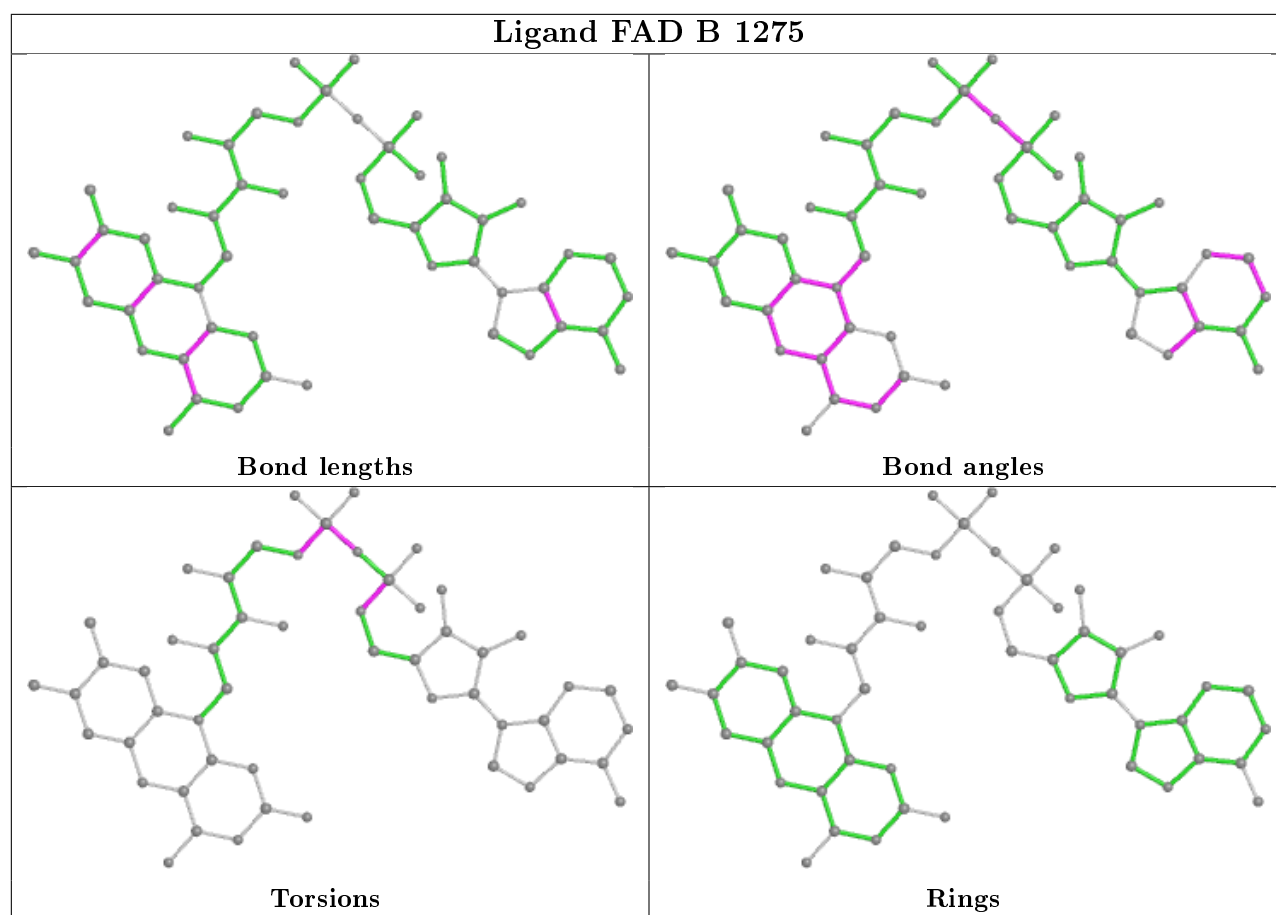
Mol	Chain	Res	Type	Clashes	Symm-Clashes
3	A	1275	CBD	8	0
3	B	1276	CBD	4	0
2	A	1274	FAD	4	0
2	B	1275	FAD	2	0

The following is a two-dimensional graphical depiction of Mogul quality analysis of bond lengths, bond angles, torsion angles, and ring geometry for all instances of the Ligand of Interest. In addition, ligands with molecular weight > 250 and outliers as shown on the validation Tables will also be included. For torsion angles, if less than 5% of the Mogul distribution of torsion angles is within 10 degrees of the torsion angle in question, then that torsion angle is considered an outlier. Any bond that is central to one or more torsion angles identified as an outlier by Mogul will be highlighted in the graph. For rings, the root-mean-square deviation (RMSD) between the ring in question and similar rings identified by Mogul is calculated over all ring torsion angles. If the average RMSD is greater than 60 degrees and the minimal RMSD between the ring in question and any Mogul-identified rings is also greater than 60 degrees, then that ring is considered an outlier. The outliers are highlighted in purple. The color gray indicates Mogul did not find sufficient equivalents in the CSD to analyse the geometry.









## 5.7 Other polymers [i](#)

There are no such residues in this entry.

## 5.8 Polymer linkage issues [i](#)

There are no chain breaks in this entry.

## 6 Fit of model and data [i](#)

### 6.1 Protein, DNA and RNA chains [i](#)

In the following table, the column labelled ‘#RSRZ> 2’ contains the number (and percentage) of RSRZ outliers, followed by percent RSRZ outliers for the chain as percentile scores relative to all X-ray entries and entries of similar resolution. The OWAB column contains the minimum, median, 95<sup>th</sup> percentile and maximum values of the occupancy-weighted average B-factor per residue. The column labelled ‘Q< 0.9’ lists the number of (and percentage) of residues with an average occupancy less than 0.9.

Mol	Chain	Analysed	<RSRZ>	#RSRZ>2	OWAB(Å <sup>2</sup> )	Q<0.9
1	A	270/294 (91%)	-0.03	0 100 100	28, 40, 58, 68	0
1	B	271/294 (92%)	-0.06	0 100 100	29, 42, 56, 62	0
All	All	541/588 (92%)	-0.05	0 100 100	28, 41, 57, 68	0

There are no RSRZ outliers to report.

### 6.2 Non-standard residues in protein, DNA, RNA chains [i](#)

There are no non-standard protein/DNA/RNA residues in this entry.

### 6.3 Carbohydrates [i](#)

There are no carbohydrates in this entry.

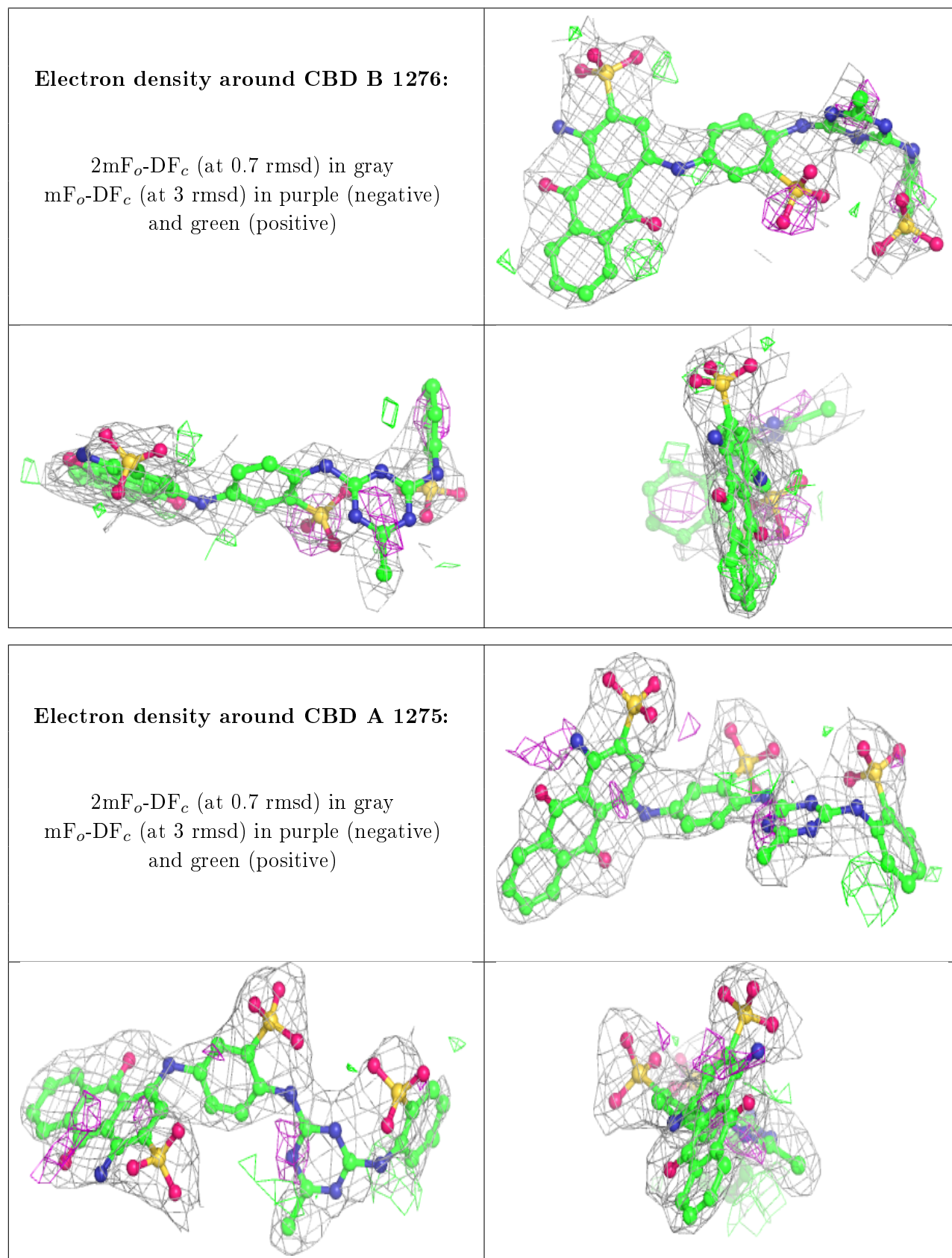
### 6.4 Ligands [i](#)

In the following table, the Atoms column lists the number of modelled atoms in the group and the number defined in the chemical component dictionary. The B-factors column lists the minimum, median, 95<sup>th</sup> percentile and maximum values of B factors of atoms in the group. The column labelled ‘Q< 0.9’ lists the number of atoms with occupancy less than 0.9.

Mol	Type	Chain	Res	Atoms	RSCC	RSR	B-factors(Å <sup>2</sup> )	Q<0.9
3	CBD	B	1276	51/51	0.76	0.34	36,54,63,77	51
3	CBD	A	1275	51/51	0.87	0.23	34,47,64,64	51
2	FAD	B	1275	53/53	0.95	0.18	29,37,43,45	0
2	FAD	A	1274	53/53	0.97	0.17	31,33,39,41	0

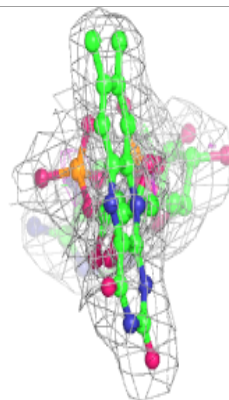
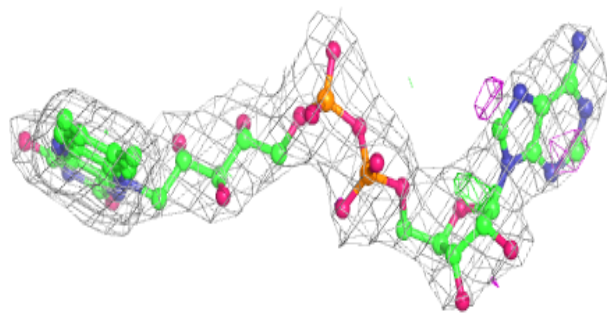
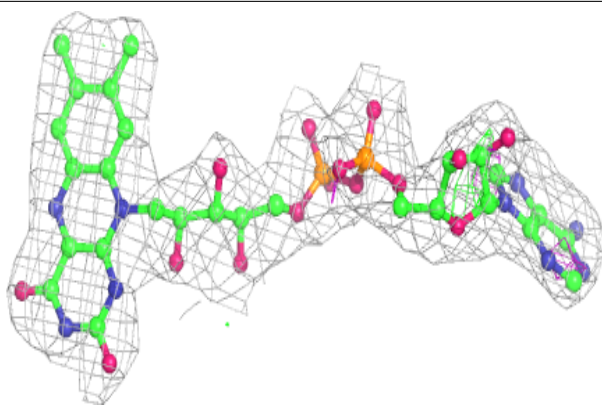
The following is a graphical depiction of the model fit to experimental electron density of all instances of the Ligand of Interest. In addition, ligands with molecular weight > 250 and outliers

as shown on the geometry validation Tables will also be included. Each fit is shown from different orientation to approximate a three-dimensional view.

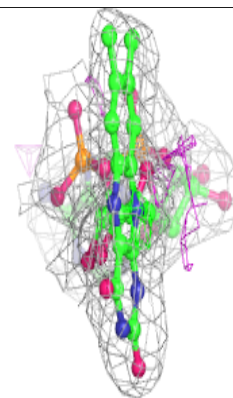
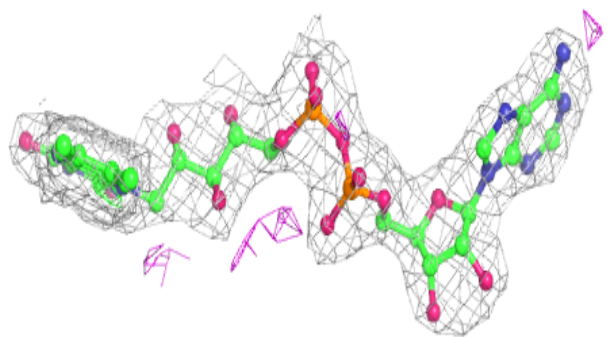
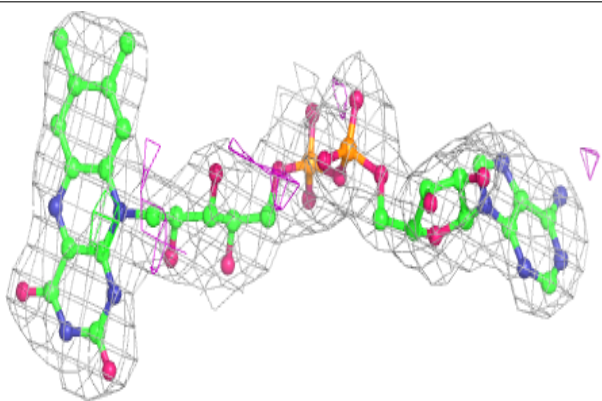


**Electron density around FAD B 1275:**

$2mF_o-DF_c$  (at 0.7 rmsd) in gray  
 $mF_o-DF_c$  (at 3 rmsd) in purple (negative)  
and green (positive)

**Electron density around FAD A 1274:**

$2mF_o-DF_c$  (at 0.7 rmsd) in gray  
 $mF_o-DF_c$  (at 3 rmsd) in purple (negative)  
and green (positive)





## 6.5 Other polymers [i](#)

There are no such residues in this entry.