



# Full wwPDB X-ray Structure Validation Report ⓘ

Jun 24, 2025 – 05:41 pm BST

PDB ID : 4BGX / pdb\_00004bgx  
Title : H5 (VN1194) Influenza Virus Haemagglutinin in Complex with Human Receptor Analogue 6'-SLN  
Authors : Xiong, X.; Coombs, P.; Martin, S.R.; Liu, J.; Xiao, H.; McCauley, J.W.; Locher, K.; Walker, P.A.; Collins, P.J.; Kawaoka, Y.; Skehel, J.J.; Gamblin, S.J.  
Deposited on : 2013-03-29  
Resolution : 2.48 Å(reported)

This is a Full wwPDB X-ray Structure Validation Report for a publicly released PDB entry.

We welcome your comments at [validation@mail.wwpdb.org](mailto:validation@mail.wwpdb.org)

A user guide is available at

<https://www.wwpdb.org/validation/2017/XrayValidationReportHelp>

with specific help available everywhere you see the ⓘ symbol.

The types of validation reports are described at

<http://www.wwpdb.org/validation/2017/FAQs#types>.

---

The following versions of software and data (see [references ⓘ](#)) were used in the production of this report:

MolProbity : 4-5-2 with Phenix2.0rc1  
Mogul : 1.8.4, CSD as541be (2020)  
Xtriage (Phenix) : 2.0rc1  
EDS : 3.0  
Percentile statistics : 20231227.v01 (using entries in the PDB archive December 27th 2023)  
CCP4 : 9.0.003 (Gargrove)  
Density-Fitness : 1.0.11  
Ideal geometry (proteins) : Engh & Huber (2001)  
Ideal geometry (DNA, RNA) : Parkinson et al. (1996)  
Validation Pipeline (wwPDB-VP) : 2.44

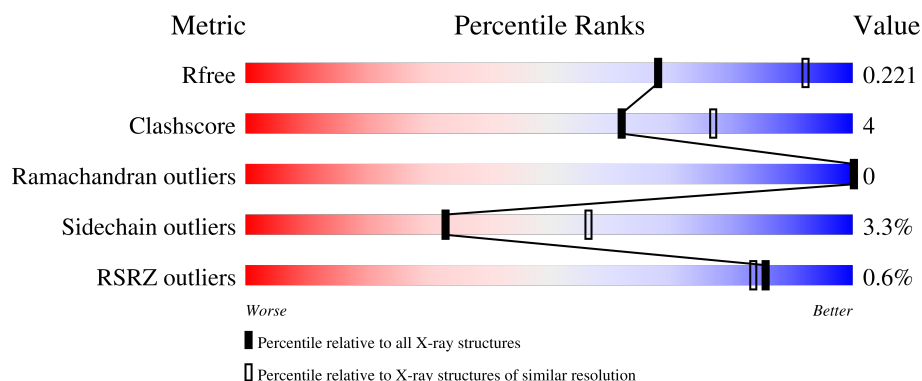
# 1 Overall quality at a glance

The following experimental techniques were used to determine the structure:

*X-RAY DIFFRACTION*




The reported resolution of this entry is 2.48 Å.

Percentile scores (ranging between 0-100) for global validation metrics of the entry are shown in the following graphic. The table shows the number of entries on which the scores are based.



Metric	Whole archive (#Entries)	Similar resolution (#Entries, resolution range(Å))
$R_{free}$	164625	7106 (2.50-2.46)
Clashscore	180529	7991 (2.50-2.46)
Ramachandran outliers	177936	7888 (2.50-2.46)
Sidechain outliers	177891	7890 (2.50-2.46)
RSRZ outliers	164620	7106 (2.50-2.46)

The table below summarises the geometric issues observed across the polymeric chains and their fit to the electron density. The red, orange, yellow and green segments of the lower bar indicate the fraction of residues that contain outliers for  $\geq 3$ , 2, 1 and 0 types of geometric quality criteria respectively. A grey segment represents the fraction of residues that are not modelled. The numeric value for each fraction is indicated below the corresponding segment, with a dot representing fractions  $\leq 5\%$ . The upper red bar (where present) indicates the fraction of residues that have poor fit to the electron density. The numeric value is given above the bar.

Mol	Chain	Length	Quality of chain
1	A	326	
2	B	166	
3	C	2	

The following table lists non-polymeric compounds, carbohydrate monomers and non-standard

residues in protein, DNA, RNA chains that are outliers for geometric or electron-density-fit criteria:

Mol	Type	Chain	Res	Chirality	Geometry	Clashes	Electron density
4	NAG	B	1154	X	-	-	-

## 2 Entry composition [i](#)

There are 6 unique types of molecules in this entry. The entry contains 4162 atoms, of which 0 are hydrogens and 0 are deuteriums.

In the tables below, the ZeroOcc column contains the number of atoms modelled with zero occupancy, the AltConf column contains the number of residues with at least one atom in alternate conformation and the Trace column contains the number of residues modelled with at most 2 atoms.

- Molecule 1 is a protein called HEMAGGLUTININ.

Mol	Chain	Residues	Atoms					ZeroOcc	AltConf	Trace
1	A	321	Total	C	N	O	S	0	1	0
			2550	1611	439	485	15			

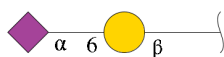
There is a discrepancy between the modelled and reference sequences:

Chain	Residue	Modelled	Actual	Comment	Reference
A	325	THR	ARG	conflict	UNP Q6DQ34

- Molecule 2 is a protein called HEMAGGLUTININ.

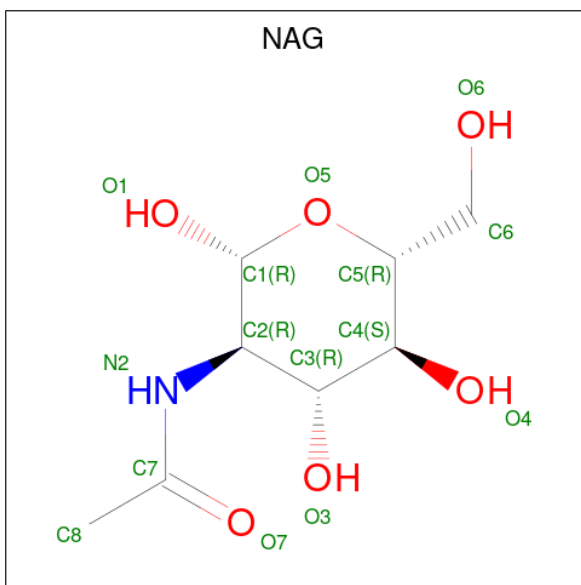
Mol	Chain	Residues	Atoms					ZeroOcc	AltConf	Trace
2	B	162	Total	C	N	O	S	0	0	0
			1312	819	226	259	8			

- Molecule 3 is an oligosaccharide called N-acetyl-alpha-neuraminic acid-(2-6)-beta-D-galactopyranose.



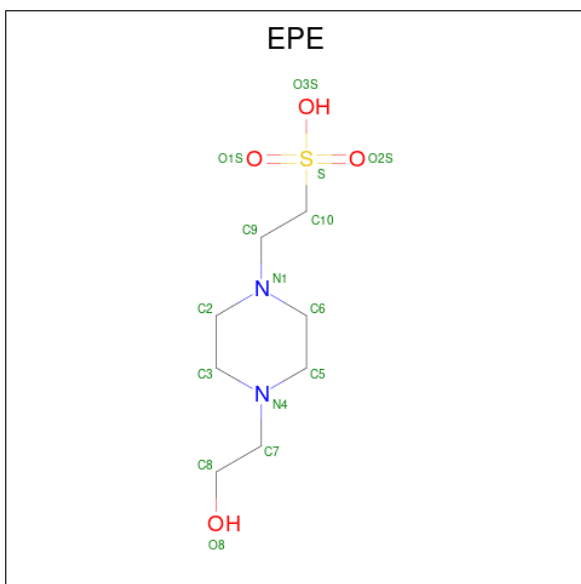
Mol	Chain	Residues	Atoms				ZeroOcc	AltConf	Trace
3	C	2	Total	C	N	O	0	0	0
			32	17	1	14			

- Molecule 4 is 2-acetamido-2-deoxy-beta-D-glucopyranose (CCD ID: NAG) (formula: C<sub>8</sub>H<sub>15</sub>NO<sub>6</sub>).



Mol	Chain	Residues	Atoms				ZeroOcc	AltConf
4	A	1	Total	C	N	O	0	0
			14	8	1	5		
4	A	1	Total	C	N	O	0	0
			14	8	1	5		
4	B	1	Total	C	N	O	0	0
			14	8	1	5		

- Molecule 5 is 4-(2-HYDROXYETHYL)-1-PIPERAZINE ETHANESULFONIC ACID (CCD ID: EPE) (formula:  $C_8H_{18}N_2O_4S$ ).



Mol	Chain	Residues	Atoms					ZeroOcc	AltConf
5	B	1	Total	C	N	O	S	0	0
			15	8	2	4	1		

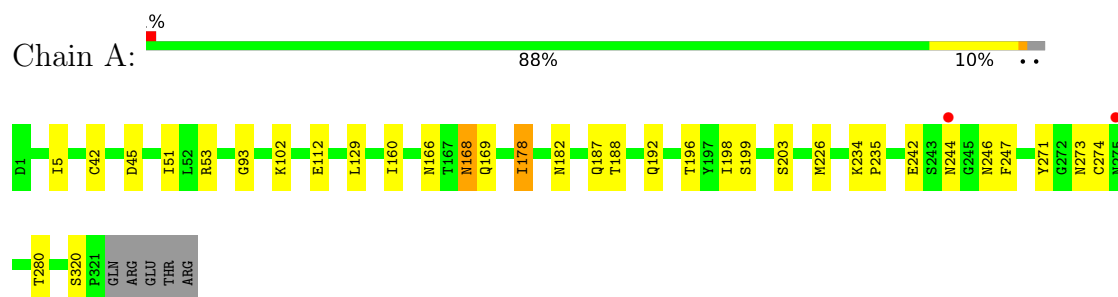
- Molecule 6 is water.

Mol	Chain	Residues	Atoms		ZeroOcc	AltConf
6	A	122	Total	O	0	0
			122	122		
6	B	89	Total	O	0	0
			89	89		

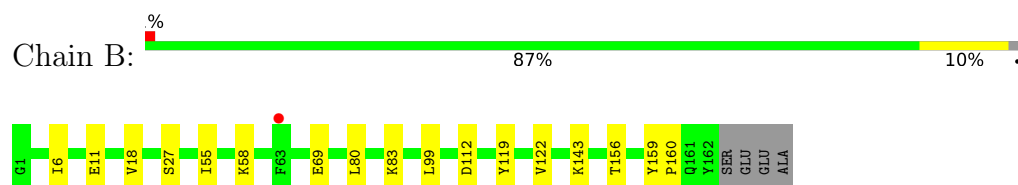
### 3 Residue-property plots [i](#)

These plots are drawn for all protein, RNA, DNA and oligosaccharide chains in the entry. The first graphic for a chain summarises the proportions of the various outlier classes displayed in the second graphic. The second graphic shows the sequence view annotated by issues in geometry and electron density. Residues are color-coded according to the number of geometric quality criteria for which they contain at least one outlier: green = 0, yellow = 1, orange = 2 and red = 3 or more. A red dot above a residue indicates a poor fit to the electron density ( $RSRZ > 2$ ). Stretches of 2 or more consecutive residues without any outlier are shown as a green connector. Residues present in the sample, but not in the model, are shown in grey.

- Molecule 1: HEMAGGLUTININ



- Molecule 2: HEMAGGLUTININ



- Molecule 3: N-acetyl-alpha-neuraminic acid-(2-6)-beta-D-galactopyranose



## 4 Data and refinement statistics

Property	Value	Source
Space group	H 3 2	Depositor
Cell constants a, b, c, $\alpha$ , $\beta$ , $\gamma$	101.34Å 101.34Å 451.10Å 90.00° 90.00° 120.00°	Depositor
Resolution (Å)	37.18 – 2.48 37.18 – 2.48	Depositor EDS
% Data completeness (in resolution range)	99.8 (37.18-2.48) 99.8 (37.18-2.48)	Depositor EDS
$R_{merge}$	0.07	Depositor
$R_{sym}$	(Not available)	Depositor
$\langle I/\sigma(I) \rangle$ <sup>1</sup>	3.22 (at 2.48Å)	Xtriage
Refinement program	REFMAC 5.7.0032	Depositor
R, $R_{free}$	0.194 , 0.218 0.197 , 0.221	Depositor DCC
$R_{free}$ test set	1634 reflections (5.07%)	wwPDB-VP
Wilson B-factor (Å <sup>2</sup> )	52.8	Xtriage
Anisotropy	0.681	Xtriage
Bulk solvent $k_{sol}$ (e/Å <sup>3</sup> ), $B_{sol}$ (Å <sup>2</sup> )	0.32 , 53.6	EDS
L-test for twinning <sup>2</sup>	$\langle  L  \rangle = 0.50$ , $\langle L^2 \rangle = 0.33$	Xtriage
Estimated twinning fraction	No twinning to report.	Xtriage
$F_o, F_c$ correlation	0.96	EDS
Total number of atoms	4162	wwPDB-VP
Average B, all atoms (Å <sup>2</sup> )	77.0	wwPDB-VP

Xtriage's analysis on translational NCS is as follows: *The largest off-origin peak in the Patterson function is 5.23% of the height of the origin peak. No significant pseudotranslation is detected.*

<sup>1</sup>Intensities estimated from amplitudes.

<sup>2</sup>Theoretical values of  $\langle |L| \rangle$ ,  $\langle L^2 \rangle$  for acentric reflections are 0.5, 0.333 respectively for untwinned datasets, and 0.375, 0.2 for perfectly twinned datasets.



## 5 Model quality

### 5.1 Standard geometry

Bond lengths and bond angles in the following residue types are not validated in this section: GAL, SIA, EPE, NAG

The Z score for a bond length (or angle) is the number of standard deviations the observed value is removed from the expected value. A bond length (or angle) with  $|Z| > 5$  is considered an outlier worth inspection. RMSZ is the root-mean-square of all Z scores of the bond lengths (or angles).

Mol	Chain	Bond lengths		Bond angles	
		RMSZ	$\# Z  > 5$	RMSZ	$\# Z  > 5$
1	A	0.51	0/2615	0.74	1/3553 (0.0%)
2	B	0.67	0/1339	0.81	0/1802
All	All	0.57	0/3954	0.77	1/5355 (0.0%)

Chiral center outliers are detected by calculating the chiral volume of a chiral center and verifying if the center is modelled as a planar moiety or with the opposite hand. A planarity outlier is detected by checking planarity of atoms in a peptide group, atoms in a mainchain group or atoms of a sidechain that are expected to be planar.

Mol	Chain	#Chirality outliers	#Planarity outliers
1	A	0	1

There are no bond length outliers.

All (1) bond angle outliers are listed below:

Mol	Chain	Res	Type	Atoms	Z	Observed( $^{\circ}$ )	Ideal( $^{\circ}$ )
1	A	182	ASN	N-CA-C	5.13	116.95	111.36

There are no chirality outliers.

All (1) planarity outliers are listed below:

Mol	Chain	Res	Type	Group
1	A	273	ASN	Peptide

### 5.2 Too-close contacts

In the following table, the Non-H and H(model) columns list the number of non-hydrogen atoms and hydrogen atoms in the chain respectively. The H(added) column lists the number of hydrogen atoms added and optimized by MolProbity. The Clashes column lists the number of clashes within

the asymmetric unit, whereas Symm-Clashes lists symmetry-related clashes.

Mol	Chain	Non-H	H(model)	H(added)	Clashes	Symm-Clashes
1	A	2550	0	2495	22	0
2	B	1312	0	1218	10	0
3	C	32	0	28	1	0
4	A	28	0	26	2	0
4	B	14	0	13	0	0
5	B	15	0	18	0	0
6	A	122	0	0	2	0
6	B	89	0	0	0	0
All	All	4162	0	3798	31	0

The all-atom clashscore is defined as the number of clashes found per 1000 atoms (including hydrogen atoms). The all-atom clashscore for this structure is 4.

All (31) close contacts within the same asymmetric unit are listed below, sorted by their clash magnitude.

Atom-1	Atom-2	Interatomic distance (Å)	Clash overlap (Å)
1:A:166:ASN:OD1	1:A:168:ASN:ND2	2.11	0.83
4:A:1165:NAG:O3	4:A:1165:NAG:H82	1.82	0.79
1:A:178:ILE:HD12	1:A:198:ILE:CD1	2.21	0.70
1:A:178:ILE:HD12	1:A:198:ILE:HD12	1.79	0.65
1:A:187:GLN:HE22	1:A:246:ASN:HD21	1.41	0.64
2:B:6:ILE:HD12	2:B:112:ASP:HA	1.85	0.59
2:B:156:THR:O	2:B:156:THR:HG22	2.08	0.54
1:A:129:LEU:O	3:C:2:SIA:H113	2.10	0.52
1:A:196:THR:HG22	1:A:244:ASN:HB3	1.94	0.50
1:A:198:ILE:HD11	1:A:247:PHE:HA	1.94	0.49
1:A:160:ILE:O	1:A:242:GLU:HA	2.14	0.48
1:A:234:LYS:HB3	1:A:235:PRO:HD2	1.95	0.47
2:B:156:THR:O	2:B:156:THR:CG2	2.61	0.46
1:A:51:ILE:HD12	1:A:271:TYR:HB2	1.98	0.46
1:A:93:GLY:HA3	1:A:226:MET:O	2.17	0.45
4:A:1165:NAG:H83	6:A:2121:HOH:O	2.18	0.44
2:B:80:LEU:C	2:B:80:LEU:HD23	2.42	0.44
1:A:5:ILE:HG13	2:B:119:TYR:HA	1.99	0.44
1:A:320:SER:HA	6:A:2119:HOH:O	2.18	0.44
1:A:168:ASN:ND2	1:A:168:ASN:H	2.16	0.43
2:B:55:ILE:HG12	2:B:99:LEU:HD21	2.00	0.43
2:B:6:ILE:HD12	2:B:112:ASP:CA	2.47	0.43
1:A:178:ILE:CD1	1:A:198:ILE:HD12	2.45	0.43
1:A:188:THR:HG22	1:A:192:GLN:O	2.19	0.42

*Continued on next page...*

*Continued from previous page...*

Atom-1	Atom-2	Interatomic distance (Å)	Clash overlap (Å)
1:A:198:ILE:HD13	1:A:247:PHE:HD1	1.84	0.42
1:A:102:LYS:NZ	2:B:69:GLU:OE2	2.48	0.42
2:B:159:TYR:HB3	2:B:160:PRO:HD3	2.01	0.41
1:A:42:CYS:HA	1:A:274:CYS:HB3	2.02	0.41
1:A:5:ILE:HD11	2:B:122:VAL:HG21	2.03	0.41
1:A:234:LYS:HB3	1:A:235:PRO:CD	2.51	0.41
1:A:199:SER:OG	1:A:242:GLU:HB3	2.22	0.40

There are no symmetry-related clashes.

## 5.3 Torsion angles [i](#)

### 5.3.1 Protein backbone [i](#)

In the following table, the Percentiles column shows the percent Ramachandran outliers of the chain as a percentile score with respect to all X-ray entries followed by that with respect to entries of similar resolution.

The Analysed column shows the number of residues for which the backbone conformation was analysed, and the total number of residues.

Mol	Chain	Analysed	Favoured	Allowed	Outliers	Percentiles	
1	A	320/326 (98%)	307 (96%)	13 (4%)	0	100	100
2	B	160/166 (96%)	154 (96%)	6 (4%)	0	100	100
All	All	480/492 (98%)	461 (96%)	19 (4%)	0	100	100

There are no Ramachandran outliers to report.

### 5.3.2 Protein sidechains [i](#)

In the following table, the Percentiles column shows the percent sidechain outliers of the chain as a percentile score with respect to all X-ray entries followed by that with respect to entries of similar resolution.

The Analysed column shows the number of residues for which the sidechain conformation was analysed, and the total number of residues.

Mol	Chain	Analysed	Rotameric	Outliers	Percentiles	
1	A	290/294 (99%)	282 (97%)	8 (3%)	38	63

*Continued on next page...*

*Continued from previous page...*

Mol	Chain	Analysed	Rotameric	Outliers	Percentiles	
2	B	138/141 (98%)	132 (96%)	6 (4%)	25	45
All	All	428/435 (98%)	414 (97%)	14 (3%)	33	56

All (14) residues with a non-rotameric sidechain are listed below:

Mol	Chain	Res	Type
1	A	45	ASP
1	A	53	ARG
1	A	112	GLU
1	A	168	ASN
1	A	169	GLN
1	A	178	ILE
1	A	203	SER
1	A	280	THR
2	B	11	GLU
2	B	18	VAL
2	B	27	SER
2	B	58	LYS
2	B	83	LYS
2	B	143	LYS

Sometimes sidechains can be flipped to improve hydrogen bonding and reduce clashes. All (8) such sidechains are listed below:

Mol	Chain	Res	Type
1	A	2	GLN
1	A	15	GLN
1	A	168	ASN
1	A	220	ASN
1	A	222	GLN
1	A	246	ASN
2	B	15	GLN
2	B	26	HIS

### 5.3.3 RNA ⓘ

There are no RNA molecules in this entry.

## 5.4 Non-standard residues in protein, DNA, RNA chains ⓘ

There are no non-standard protein/DNA/RNA residues in this entry.

## 5.5 Carbohydrates ⓘ

2 monosaccharides are modelled in this entry.

In the following table, the Counts columns list the number of bonds (or angles) for which Mogul statistics could be retrieved, the number of bonds (or angles) that are observed in the model and the number of bonds (or angles) that are defined in the Chemical Component Dictionary. The Link column lists molecule types, if any, to which the group is linked. The Z score for a bond length (or angle) is the number of standard deviations the observed value is removed from the expected value. A bond length (or angle) with  $|Z| > 2$  is considered an outlier worth inspection. RMSZ is the root-mean-square of all Z scores of the bond lengths (or angles).

Mol	Type	Chain	Res	Link	Bond lengths			Bond angles		
					Counts	RMSZ	$\# Z  > 2$	Counts	RMSZ	$\# Z  > 2$
3	GAL	C	1	3	12,12,12	0.69	0	17,17,17	0.92	1 (5%)
3	SIA	C	2	3	20,20,21	0.70	0	24,28,31	1.52	5 (20%)

In the following table, the Chirals column lists the number of chiral outliers, the number of chiral centers analysed, the number of these observed in the model and the number defined in the Chemical Component Dictionary. Similar counts are reported in the Torsion and Rings columns. '-' means no outliers of that kind were identified.

Mol	Type	Chain	Res	Link	Chirals	Torsions	Rings
3	GAL	C	1	3	-	0/2/22/22	0/1/1/1
3	SIA	C	2	3	-	0/18/34/38	0/1/1/1

There are no bond length outliers.

All (6) bond angle outliers are listed below:

Mol	Chain	Res	Type	Atoms	Z	Observed(°)	Ideal(°)
3	C	2	SIA	C4-C5-N5	-4.44	101.60	110.38
3	C	2	SIA	C3-C4-C5	-2.98	107.86	111.46
3	C	2	SIA	O6-C2-C1	2.69	112.98	107.70
3	C	2	SIA	C6-O6-C2	2.53	116.75	111.34
3	C	2	SIA	O1B-C1-C2	2.10	119.02	113.03
3	C	1	GAL	O6-C6-C5	-2.05	104.27	111.29

There are no chirality outliers.

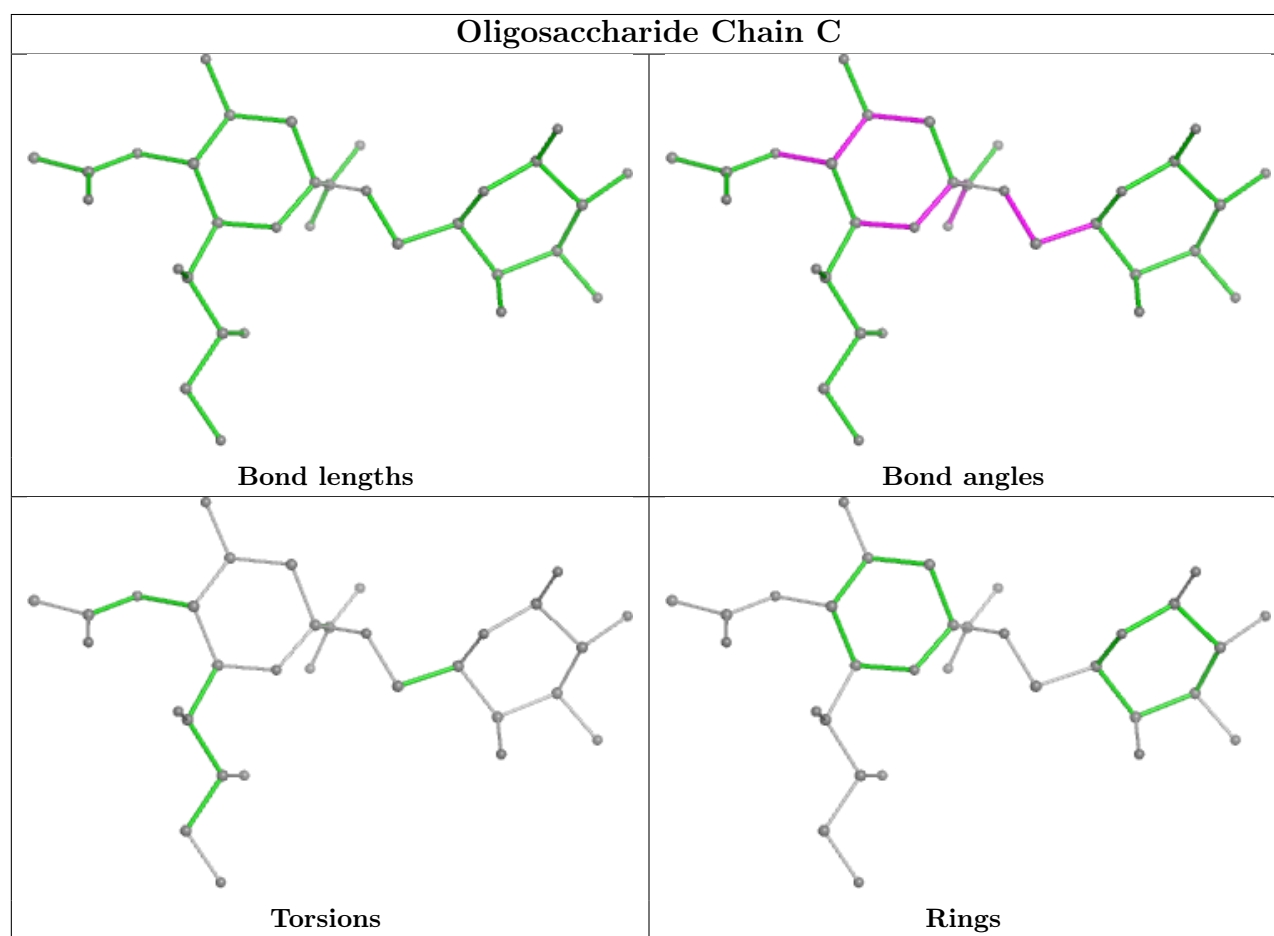
There are no torsion outliers.

There are no ring outliers.

1 monomer is involved in 1 short contact:

Mol	Chain	Res	Type	Clashes	Symm-Clashes
3	C	2	SIA	1	0

The following is a two-dimensional graphical depiction of Mogul quality analysis of bond lengths, bond angles, torsion angles, and ring geometry for oligosaccharide.



## 5.6 Ligand geometry [i](#)

4 ligands are modelled in this entry.

In the following table, the Counts columns list the number of bonds (or angles) for which Mogul statistics could be retrieved, the number of bonds (or angles) that are observed in the model and the number of bonds (or angles) that are defined in the Chemical Component Dictionary. The Link column lists molecule types, if any, to which the group is linked. The Z score for a bond length (or angle) is the number of standard deviations the observed value is removed from the expected value. A bond length (or angle) with  $|Z| > 2$  is considered an outlier worth inspection. RMSZ is the root-mean-square of all Z scores of the bond lengths (or angles).

Mol	Type	Chain	Res	Link	Bond lengths			Bond angles		
					Counts	RMSZ	# Z  > 2	Counts	RMSZ	# Z  > 2
5	EPE	B	1163	-	15,15,15	1.85	1 (6%)	18,20,20	2.99	8 (44%)
4	NAG	B	1154	2	14,14,15	0.65	0	17,19,21	1.34	3 (17%)
4	NAG	A	1023	1	14,14,15	0.39	0	17,19,21	1.40	2 (11%)
4	NAG	A	1165	1	14,14,15	0.55	0	17,19,21	1.80	5 (29%)

In the following table, the Chirals column lists the number of chiral outliers, the number of chiral centers analysed, the number of these observed in the model and the number defined in the Chemical Component Dictionary. Similar counts are reported in the Torsion and Rings columns. '-' means no outliers of that kind were identified.

Mol	Type	Chain	Res	Link	Chirals	Torsions	Rings
5	EPE	B	1163	-	-	6/9/19/19	0/1/1/1
4	NAG	B	1154	2	1/1/5/7	2/6/23/26	0/1/1/1
4	NAG	A	1023	1	-	2/6/23/26	0/1/1/1
4	NAG	A	1165	1	-	6/6/23/26	0/1/1/1

All (1) bond length outliers are listed below:

Mol	Chain	Res	Type	Atoms	Z	Observed(Å)	Ideal(Å)
5	B	1163	EPE	C10-S	-6.62	1.68	1.77

All (18) bond angle outliers are listed below:

Mol	Chain	Res	Type	Atoms	Z	Observed(°)	Ideal(°)
5	B	1163	EPE	C5-N4-C3	6.24	122.88	108.83
5	B	1163	EPE	C6-N1-C2	5.71	121.68	108.83
5	B	1163	EPE	O1S-S-C10	5.32	113.32	106.92
4	A	1023	NAG	O5-C5-C6	3.93	113.36	107.20
5	B	1163	EPE	C9-N1-C6	3.41	119.94	111.23
5	B	1163	EPE	C7-N4-C5	3.33	119.75	111.23
5	B	1163	EPE	O2S-S-C10	3.31	110.89	106.92
4	A	1165	NAG	C8-C7-N2	3.20	121.51	116.10
4	A	1165	NAG	C1-O5-C5	3.03	116.30	112.19
4	A	1165	NAG	O7-C7-C8	-2.99	116.51	122.06
4	A	1165	NAG	C2-N2-C7	2.83	126.93	122.90
4	B	1154	NAG	C1-O5-C5	2.81	116.00	112.19
5	B	1163	EPE	C9-N1-C2	2.70	118.13	111.23
4	A	1165	NAG	O3-C3-C2	2.65	114.94	109.47
4	B	1154	NAG	O5-C1-C2	2.47	115.19	111.29
5	B	1163	EPE	C7-N4-C3	2.35	117.24	111.23

*Continued on next page...*

*Continued from previous page...*

Mol	Chain	Res	Type	Atoms	Z	Observed(°)	Ideal(°)
4	A	1023	NAG	C3-C4-C5	-2.34	106.07	110.24
4	B	1154	NAG	O4-C4-C5	2.17	114.69	109.30

All (1) chirality outliers are listed below:

Mol	Chain	Res	Type	Atom
4	B	1154	NAG	C1

All (16) torsion outliers are listed below:

Mol	Chain	Res	Type	Atoms
5	B	1163	EPE	C10-C9-N1-C2
4	A	1165	NAG	O5-C5-C6-O6
4	A	1165	NAG	C1-C2-N2-C7
4	A	1165	NAG	C8-C7-N2-C2
4	A	1165	NAG	O7-C7-N2-C2
4	A	1165	NAG	C4-C5-C6-O6
5	B	1163	EPE	C9-C10-S-O3S
5	B	1163	EPE	C8-C7-N4-C5
5	B	1163	EPE	C10-C9-N1-C6
4	A	1023	NAG	C4-C5-C6-O6
4	B	1154	NAG	O5-C5-C6-O6
5	B	1163	EPE	C9-C10-S-O1S
5	B	1163	EPE	C9-C10-S-O2S
4	B	1154	NAG	C4-C5-C6-O6
4	A	1165	NAG	C3-C2-N2-C7
4	A	1023	NAG	O5-C5-C6-O6

There are no ring outliers.

1 monomer is involved in 2 short contacts:

Mol	Chain	Res	Type	Clashes	Symm-Clashes
4	A	1165	NAG	2	0

## 5.7 Other polymers

There are no such residues in this entry.



## 5.8 Polymer linkage issues ⓘ

There are no chain breaks in this entry.

## 6 Fit of model and data [i](#)

### 6.1 Protein, DNA and RNA chains [i](#)

In the following table, the column labelled ‘#RSRZ > 2’ contains the number (and percentage) of RSRZ outliers, followed by percent RSRZ outliers for the chain as percentile scores relative to all X-ray entries and entries of similar resolution. The OWAB column contains the minimum, median, 95<sup>th</sup> percentile and maximum values of the occupancy-weighted average B-factor per residue. The column labelled ‘Q < 0.9’ lists the number of (and percentage) of residues with an average occupancy less than 0.9.

Mol	Chain	Analysed	<RSRZ>	#RSRZ>2	OWAB(Å <sup>2</sup> )	Q<0.9
1	A	321/326 (98%)	-0.02	2 (0%) 85 83	45, 86, 112, 144	1 (0%)
2	B	162/166 (97%)	-0.27	1 (0%) 85 83	35, 60, 99, 134	0
All	All	483/492 (98%)	-0.11	3 (0%) 85 83	35, 79, 111, 144	1 (0%)

All (3) RSRZ outliers are listed below:

Mol	Chain	Res	Type	RSRZ
2	B	63	PHE	3.2
1	A	244	ASN	2.6
1	A	275	ASN	2.0

### 6.2 Non-standard residues in protein, DNA, RNA chains [i](#)

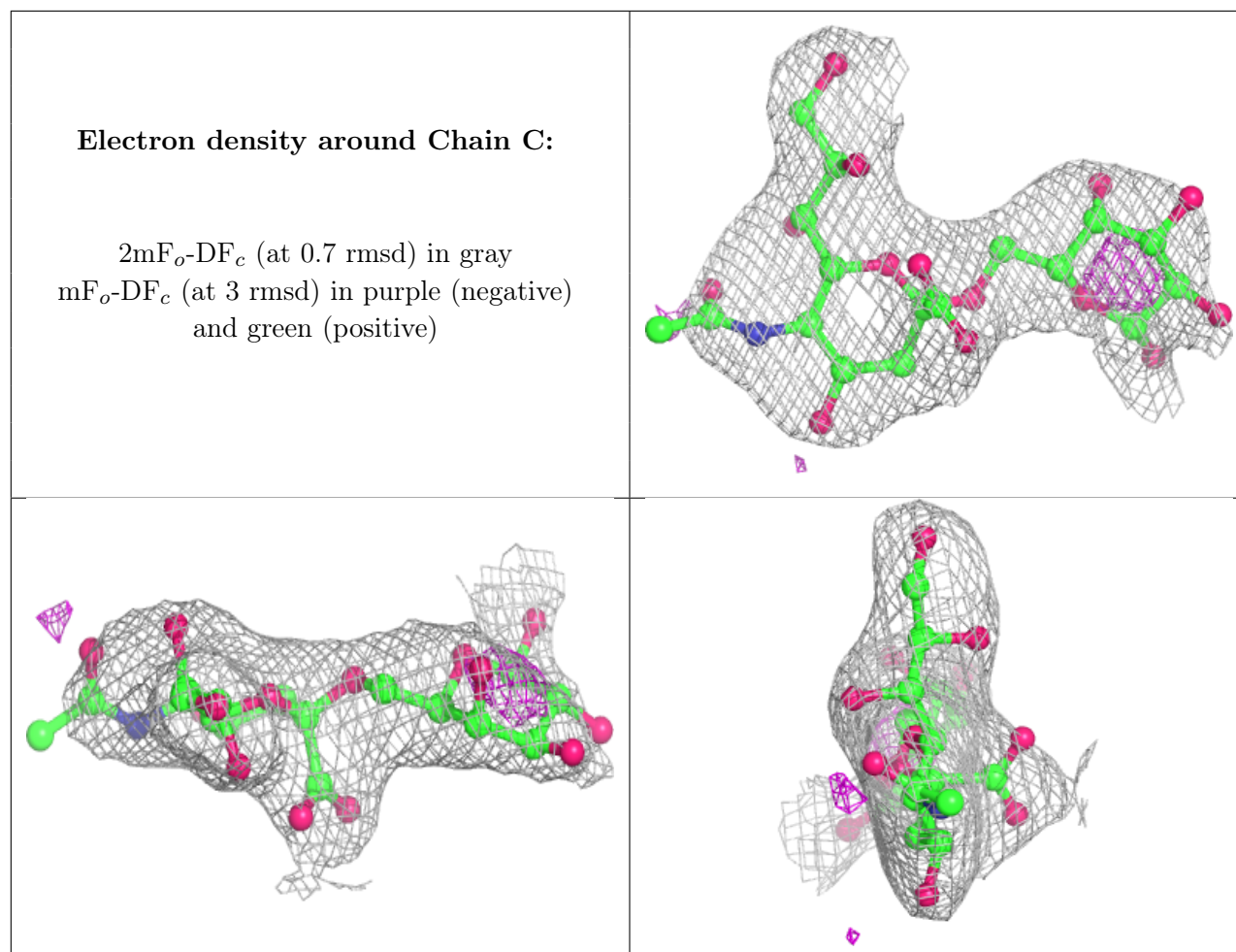
There are no non-standard protein/DNA/RNA residues in this entry.

### 6.3 Carbohydrates [i](#)

In the following table, the Atoms column lists the number of modelled atoms in the group and the number defined in the chemical component dictionary. The B-factors column lists the minimum, median, 95<sup>th</sup> percentile and maximum values of B factors of atoms in the group. The column labelled ‘Q < 0.9’ lists the number of atoms with occupancy less than 0.9.

Mol	Type	Chain	Res	Atoms	RSCC	RSR	B-factors(Å <sup>2</sup> )	Q<0.9
3	GAL	C	1	12/12	0.65	0.14	91,108,123,126	0
3	SIA	C	2	20/21	0.92	0.09	69,80,97,98	0

The following is a graphical depiction of the model fit to experimental electron density for oligosaccharide. Each fit is shown from different orientation to approximate a three-dimensional view.



## 6.4 Ligands [i](#)

In the following table, the Atoms column lists the number of modelled atoms in the group and the number defined in the chemical component dictionary. The B-factors column lists the minimum, median, 95<sup>th</sup> percentile and maximum values of B factors of atoms in the group. The column labelled 'Q < 0.9' lists the number of atoms with occupancy less than 0.9.

Mol	Type	Chain	Res	Atoms	RSCC	RSR	B-factors( $\text{\AA}^2$ )	Q<0.9
4	NAG	B	1154	14/15	0.75	0.12	87,101,111,113	0
4	NAG	A	1165	14/15	0.82	0.12	82,94,105,107	0
5	EPE	B	1163	15/15	0.84	0.18	83,92,112,120	0
4	NAG	A	1023	14/15	0.86	0.10	67,83,88,88	0

## 6.5 Other polymers [i](#)

There are no such residues in this entry.