



# Full wwPDB X-ray Structure Validation Report ⓘ

Aug 9, 2020 – 08:32 AM BST

PDB ID : 4AKM  
Title : Crystal structure of the human lysosome-associated membrane protein LAMP-3 (aka DC-LAMP)  
Authors : Krausze, J.; Wilke, S.; Buessow, K.  
Deposited on : 2012-02-24  
Resolution : 2.69 Å(reported)

This is a Full wwPDB X-ray Structure Validation Report for a publicly released PDB entry.

We welcome your comments at [validation@mail.wwpdb.org](mailto:validation@mail.wwpdb.org)

A user guide is available at

<https://www.wwpdb.org/validation/2017/XrayValidationReportHelp>

with specific help available everywhere you see the ⓘ symbol.

---

The following versions of software and data (see [references ⓘ](#)) were used in the production of this report:

MolProbity : 4.02b-467  
Mogul : 1.8.5 (274361), CSD as541be (2020)  
Xtriage (Phenix) : 1.13  
EDS : 2.13.1  
Percentile statistics : 20191225.v01 (using entries in the PDB archive December 25th 2019)  
Refmac : 5.8.0158  
CCP4 : 7.0.044 (Gargrove)  
Ideal geometry (proteins) : Engh & Huber (2001)  
Ideal geometry (DNA, RNA) : Parkinson et al. (1996)  
Validation Pipeline (wwPDB-VP) : 2.13.1

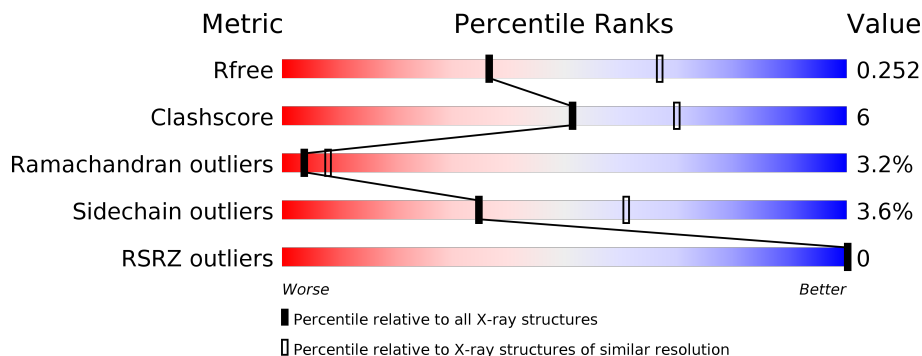
# 1 Overall quality at a glance i

The following experimental techniques were used to determine the structure:

*X-RAY DIFFRACTION*

The reported resolution of this entry is 2.69 Å.

Percentile scores (ranging between 0-100) for global validation metrics of the entry are shown in the following graphic. The table shows the number of entries on which the scores are based.



Metric	Whole archive (#Entries)	Similar resolution (#Entries, resolution range(Å))
$R_{free}$	130704	3863 (2.70-2.66)
Clashscore	141614	4210 (2.70-2.66)
Ramachandran outliers	138981	4141 (2.70-2.66)
Sidechain outliers	138945	4141 (2.70-2.66)
RSRZ outliers	127900	3780 (2.70-2.66)

The table below summarises the geometric issues observed across the polymeric chains and their fit to the electron density. The red, orange, yellow and green segments on the lower bar indicate the fraction of residues that contain outliers for  $\geq 3$ , 2, 1 and 0 types of geometric quality criteria respectively. A grey segment represents the fraction of residues that are not modelled. The numeric value for each fraction is indicated below the corresponding segment, with a dot representing fractions  $\leq 5\%$ . The upper red bar (where present) indicates the fraction of residues that have poor fit to the electron density. The numeric value is given above the bar.

Mol	Chain	Length	Quality of chain
1	A	166	 78% 13% • 7%
1	B	166	 72% 22% • 5%

## 2 Entry composition i

There are 4 unique types of molecules in this entry. The entry contains 2480 atoms, of which 0 are hydrogens and 0 are deuteriums.

In the tables below, the ZeroOcc column contains the number of atoms modelled with zero occupancy, the AltConf column contains the number of residues with at least one atom in alternate conformation and the Trace column contains the number of residues modelled with at most 2 atoms.

- Molecule 1 is a protein called LYSOSOME-ASSOCIATED MEMBRANE GLYCOPROTEIN 3.

Mol	Chain	Residues	Atoms					ZeroOcc	AltConf	Trace
			Total	C	N	O	S			
1	A	155	1213	764	203	240	6	0	0	0
1	B	157	1225	770	205	244	6	0	0	0

There are 14 discrepancies between the modelled and reference sequences:

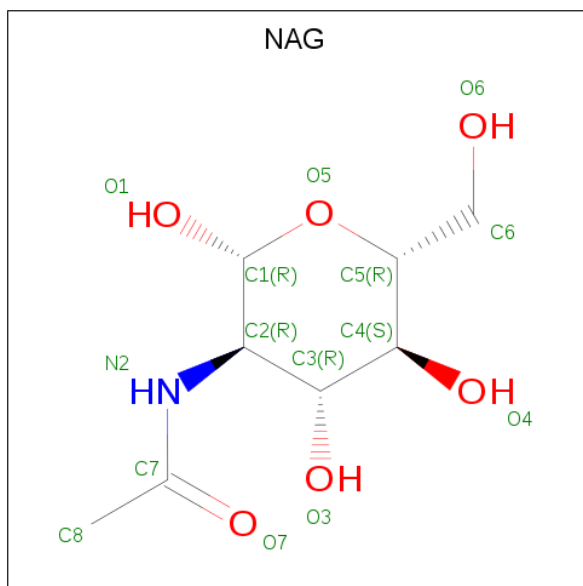
Chain	Residue	Modelled	Actual	Comment	Reference
A	382	HIS	-	expression tag	UNP Q9UQV4
A	383	HIS	-	expression tag	UNP Q9UQV4
A	384	HIS	-	expression tag	UNP Q9UQV4
A	385	HIS	-	expression tag	UNP Q9UQV4
A	386	HIS	-	expression tag	UNP Q9UQV4
A	387	HIS	-	expression tag	UNP Q9UQV4
A	318	VAL	ILE	variant	UNP Q9UQV4
B	382	HIS	-	expression tag	UNP Q9UQV4
B	383	HIS	-	expression tag	UNP Q9UQV4
B	384	HIS	-	expression tag	UNP Q9UQV4
B	385	HIS	-	expression tag	UNP Q9UQV4
B	386	HIS	-	expression tag	UNP Q9UQV4
B	387	HIS	-	expression tag	UNP Q9UQV4
B	318	VAL	ILE	variant	UNP Q9UQV4

- Molecule 2 is IRIDIUM (III) ION (three-letter code: IR3) (formula: Ir).

Mol	Chain	Residues	Atoms		ZeroOcc	AltConf
2	B	2	Total	Ir	0	0
			2	2		
2	A	2	Total	Ir	0	0
			2	2		

- Molecule 3 is 2-acetamido-2-deoxy-beta-D-glucopyranose (three-letter code: NAG) (formula:

C<sub>8</sub>H<sub>15</sub>NO<sub>6</sub>).



Mol	Chain	Residues	Atoms				ZeroOcc	AltConf
3	A	1	Total	C	N	O	0	0
			14	8	1	5		
3	B	1	Total	C	N	O	0	0
			14	8	1	5		


- Molecule 4 is water.

Mol	Chain	Residues	Atoms		ZeroOcc	AltConf
4	A	4	Total	O	0	0
			4	4		
4	B	6	Total	O	0	0
			6	6		

### 3 Residue-property plots [i](#)

These plots are drawn for all protein, RNA, DNA and oligosaccharide chains in the entry. The first graphic for a chain summarises the proportions of the various outlier classes displayed in the second graphic. The second graphic shows the sequence view annotated by issues in geometry and electron density. Residues are color-coded according to the number of geometric quality criteria for which they contain at least one outlier: green = 0, yellow = 1, orange = 2 and red = 3 or more. A red dot above a residue indicates a poor fit to the electron density ( $RSRZ > 2$ ). Stretches of 2 or more consecutive residues without any outlier are shown as a green connector. Residues present in the sample, but not in the model, are shown in grey.

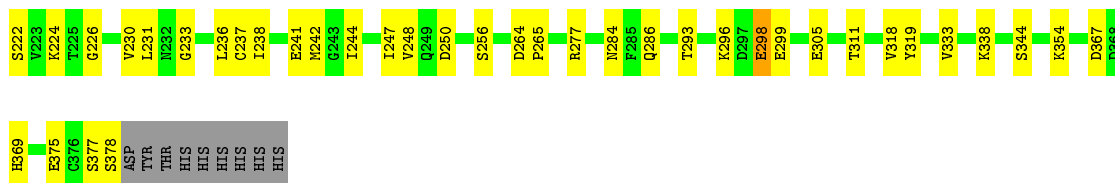
- Molecule 1: LYSOSOME-ASSOCIATED MEMBRANE GLYCOPROTEIN 3

Chain A: 



- Molecule 1: LYSOSOME-ASSOCIATED MEMBRANE GLYCOPROTEIN 3

Chain B: 



## 4 Data and refinement statistics

Property	Value	Source
Space group	P 31	Depositor
Cell constants a, b, c, $\alpha$ , $\beta$ , $\gamma$	52.60Å 52.60Å 141.98Å 90.00° 90.00° 120.00°	Depositor
Resolution (Å)	19.30 – 2.69 19.30 – 2.69	Depositor EDS
% Data completeness (in resolution range)	92.0 (19.30-2.69) 88.5 (19.30-2.69)	Depositor EDS
$R_{merge}$	0.05	Depositor
$R_{sym}$	(Not available)	Depositor
$\langle I/\sigma(I) \rangle$ <sup>1</sup>	2.55 (at 2.70Å)	Xtriage
Refinement program	PHENIX (PHENIX.REFINE)	Depositor
R, $R_{free}$	0.227 , 0.249 0.220 , 0.252	Depositor DCC
$R_{free}$ test set	555 reflections (4.97%)	wwPDB-VP
Wilson B-factor (Å <sup>2</sup> )	53.1	Xtriage
Anisotropy	0.395	Xtriage
Bulk solvent $k_{sol}$ (e/Å <sup>3</sup> ), $B_{sol}$ (Å <sup>2</sup> )	0.26 , 10.6	EDS
L-test for twinning <sup>2</sup>	$\langle  L  \rangle = 0.46$ , $\langle L^2 \rangle = 0.29$	Xtriage
Estimated twinning fraction	0.037 for -h,-k,l 0.128 for h,-h-k,-l 0.068 for -k,-h,-l	Xtriage
$F_o, F_c$ correlation	0.94	EDS
Total number of atoms	2480	wwPDB-VP
Average B, all atoms (Å <sup>2</sup> )	61.0	wwPDB-VP

Xtriage's analysis on translational NCS is as follows: *The largest off-origin peak in the Patterson function is 6.38% of the height of the origin peak. No significant pseudotranslation is detected.*

<sup>1</sup>Intensities estimated from amplitudes.

<sup>2</sup>Theoretical values of  $\langle |L| \rangle$ ,  $\langle L^2 \rangle$  for acentric reflections are 0.5, 0.333 respectively for untwinned datasets, and 0.375, 0.2 for perfectly twinned datasets.

## 5 Model quality [i](#)

### 5.1 Standard geometry [i](#)

Bond lengths and bond angles in the following residue types are not validated in this section: IR3, NAG

The Z score for a bond length (or angle) is the number of standard deviations the observed value is removed from the expected value. A bond length (or angle) with  $|Z| > 5$  is considered an outlier worth inspection. RMSZ is the root-mean-square of all Z scores of the bond lengths (or angles).

Mol	Chain	Bond lengths		Bond angles	
		RMSZ	# Z  >5	RMSZ	# Z  >5
1	A	0.33	0/1235	0.51	0/1670
1	B	0.34	0/1247	0.55	0/1686
All	All	0.34	0/2482	0.53	0/3356

There are no bond length outliers.

There are no bond angle outliers.

There are no chirality outliers.

There are no planarity outliers.

### 5.2 Too-close contacts [i](#)

In the following table, the Non-H and H(model) columns list the number of non-hydrogen atoms and hydrogen atoms in the chain respectively. The H(added) column lists the number of hydrogen atoms added and optimized by MolProbity. The Clashes column lists the number of clashes within the asymmetric unit, whereas Symm-Clashes lists symmetry related clashes.

Mol	Chain	Non-H	H(model)	H(added)	Clashes	Symm-Clashes
1	A	1213	0	1167	11	0
1	B	1225	0	1177	17	0
2	A	2	0	0	0	0
2	B	2	0	0	0	0
3	A	14	0	13	0	0
3	B	14	0	13	0	0
4	A	4	0	0	0	0
4	B	6	0	0	0	0
All	All	2480	0	2370	27	0

The all-atom clashscore is defined as the number of clashes found per 1000 atoms (including hydrogen atoms). The all-atom clashscore for this structure is 6.

All (27) close contacts within the same asymmetric unit are listed below, sorted by their clash magnitude.

Atom-1	Atom-2	Interatomic distance (Å)	Clash overlap (Å)
1:B:293:THR:HB	1:B:305:GLU:HB3	1.69	0.75
1:A:293:THR:HB	1:A:305:GLU:HB3	1.76	0.67
1:B:242:MET:HG3	1:B:244:ILE:HD11	1.83	0.61
1:B:231:LEU:HD23	1:B:236:LEU:HA	1.85	0.59
1:A:230:VAL:HB	1:A:238:ILE:HB	1.85	0.57
1:A:224:LYS:HZ2	1:B:222:SER:N	2.04	0.55
1:A:314:ASP:HA	1:A:315:PRO:C	2.27	0.54
1:B:250:ASP:OD2	1:B:319:TYR:OH	2.22	0.53
1:A:231:LEU:HD23	1:A:236:LEU:HA	1.92	0.51
1:B:296:LYS:HE3	1:B:333:VAL:HG21	1.93	0.50
1:A:314:ASP:HA	1:A:315:PRO:O	2.13	0.48
1:B:338:LYS:HG2	1:B:375:GLU:HG2	1.97	0.47
1:B:367:ASP:O	1:B:369:HIS:ND1	2.49	0.46
1:A:232:ASN:O	1:A:234:SER:N	2.42	0.46
1:B:298:GLU:HG2	1:B:299:GLU:HA	1.97	0.46
1:B:298:GLU:HA	1:B:299:GLU:HA	1.70	0.45
1:B:230:VAL:HB	1:B:238:ILE:HB	2.00	0.44
1:B:377:SER:HA	1:B:378:SER:C	2.38	0.44
1:B:344:SER:HB3	1:B:354:LYS:HG3	1.99	0.43
1:A:248:VAL:HG22	1:A:259:ARG:HB3	2.00	0.43
1:A:288:GLY:HA3	1:A:309:TYR:O	2.19	0.42
1:A:226:GLY:O	1:A:241:GLU:HA	2.20	0.42
1:B:247:ILE:HD13	1:B:354:LYS:HE3	2.01	0.42
1:B:311:THR:HA	1:B:318:VAL:HG12	2.03	0.41
1:A:244:ILE:HG22	1:A:263:ILE:HD13	2.02	0.41
1:B:226:GLY:O	1:B:241:GLU:HA	2.21	0.41
1:B:264:ASP:HA	1:B:265:PRO:HD2	1.92	0.40

There are no symmetry-related clashes.

## 5.3 Torsion angles [i](#)

### 5.3.1 Protein backbone [i](#)

In the following table, the Percentiles column shows the percent Ramachandran outliers of the chain as a percentile score with respect to all X-ray entries followed by that with respect to entries of similar resolution.

The Analysed column shows the number of residues for which the backbone conformation was analysed, and the total number of residues.



Mol	Chain	Analysed	Favoured	Allowed	Outliers	Percentiles	
1	A	153/166 (92%)	137 (90%)	9 (6%)	7 (5%)	2	4
1	B	155/166 (93%)	138 (89%)	14 (9%)	3 (2%)	8	18
All	All	308/332 (93%)	275 (89%)	23 (8%)	10 (3%)	4	8

All (10) Ramachandran outliers are listed below:

Mol	Chain	Res	Type
1	A	315	PRO
1	A	316	GLU
1	A	373	VAL
1	A	233	GLY
1	B	298	GLU
1	A	298	GLU
1	A	300	SER
1	A	363	PHE
1	B	286	GLN
1	B	233	GLY

### 5.3.2 Protein sidechains [i](#)

In the following table, the Percentiles column shows the percent sidechain outliers of the chain as a percentile score with respect to all X-ray entries followed by that with respect to entries of similar resolution.

The Analysed column shows the number of residues for which the sidechain conformation was analysed, and the total number of residues.

Mol	Chain	Analysed	Rotameric	Outliers	Percentiles	
1	A	136/147 (92%)	132 (97%)	4 (3%)	42	69
1	B	138/147 (94%)	132 (96%)	6 (4%)	29	54
All	All	274/294 (93%)	264 (96%)	10 (4%)	35	61

All (10) residues with a non-rotameric sidechain are listed below:

Mol	Chain	Res	Type
1	A	248	VAL
1	A	284	ASN
1	A	316	GLU
1	A	373	VAL
1	B	224	LYS
1	B	237	CYS

*Continued on next page...*

*Continued from previous page...*

Mol	Chain	Res	Type
1	B	248	VAL
1	B	256	SER
1	B	277	ARG
1	B	284	ASN

Some sidechains can be flipped to improve hydrogen bonding and reduce clashes. There are no such sidechains identified.

### 5.3.3 RNA [i](#)

There are no RNA molecules in this entry.

### 5.4 Non-standard residues in protein, DNA, RNA chains [i](#)

There are no non-standard protein/DNA/RNA residues in this entry.

### 5.5 Carbohydrates [i](#)

There are no monosaccharides in this entry.

### 5.6 Ligand geometry [i](#)

Of 6 ligands modelled in this entry, 4 are monoatomic - leaving 2 for Mogul analysis.

In the following table, the Counts columns list the number of bonds (or angles) for which Mogul statistics could be retrieved, the number of bonds (or angles) that are observed in the model and the number of bonds (or angles) that are defined in the Chemical Component Dictionary. The Link column lists molecule types, if any, to which the group is linked. The Z score for a bond length (or angle) is the number of standard deviations the observed value is removed from the expected value. A bond length (or angle) with  $|Z| > 2$  is considered an outlier worth inspection. RMSZ is the root-mean-square of all Z scores of the bond lengths (or angles).

Mol	Type	Chain	Res	Link	Bond lengths			Bond angles		
					Counts	RMSZ	$\# Z  > 2$	Counts	RMSZ	$\# Z  > 2$
3	NAG	A	1379	1	14,14,15	0.54	0	17,19,21	0.73	0
3	NAG	B	1380	1	14,14,15	0.53	0	17,19,21	0.68	0

In the following table, the Chirals column lists the number of chiral outliers, the number of chiral centers analysed, the number of these observed in the model and the number defined in the Chemical Component Dictionary. Similar counts are reported in the Torsion and Rings columns.

'-' means no outliers of that kind were identified.

Mol	Type	Chain	Res	Link	Chirals	Torsions	Rings
3	NAG	A	1379	1	-	0/6/23/26	0/1/1/1
3	NAG	B	1380	1	-	2/6/23/26	0/1/1/1

There are no bond length outliers.

There are no bond angle outliers.

There are no chirality outliers.

All (2) torsion outliers are listed below:

Mol	Chain	Res	Type	Atoms
3	B	1380	NAG	O5-C5-C6-O6
3	B	1380	NAG	C4-C5-C6-O6

There are no ring outliers.

No monomer is involved in short contacts.

## 5.7 Other polymers [i](#)

There are no such residues in this entry.

## 5.8 Polymer linkage issues [i](#)

There are no chain breaks in this entry.

## 6 Fit of model and data [i](#)

### 6.1 Protein, DNA and RNA chains [i](#)

In the following table, the column labelled ‘#RSRZ> 2’ contains the number (and percentage) of RSRZ outliers, followed by percent RSRZ outliers for the chain as percentile scores relative to all X-ray entries and entries of similar resolution. The OWAB column contains the minimum, median, 95<sup>th</sup> percentile and maximum values of the occupancy-weighted average B-factor per residue. The column labelled ‘Q< 0.9’ lists the number of (and percentage) of residues with an average occupancy less than 0.9.

Mol	Chain	Analysed	<RSRZ>	#RSRZ>2	OWAB(Å <sup>2</sup> )	Q<0.9
1	A	155/166 (93%)	-0.32	0 100 100	34, 60, 109, 133	0
1	B	157/166 (94%)	-0.43	0 100 100	35, 52, 82, 95	0
All	All	312/332 (93%)	-0.37	0 100 100	34, 56, 98, 133	0

There are no RSRZ outliers to report.

### 6.2 Non-standard residues in protein, DNA, RNA chains [i](#)

There are no non-standard protein/DNA/RNA residues in this entry.

### 6.3 Carbohydrates [i](#)

There are no monosaccharides in this entry.

### 6.4 Ligands [i](#)

In the following table, the Atoms column lists the number of modelled atoms in the group and the number defined in the chemical component dictionary. The B-factors column lists the minimum, median, 95<sup>th</sup> percentile and maximum values of B factors of atoms in the group. The column labelled ‘Q< 0.9’ lists the number of atoms with occupancy less than 0.9.

Mol	Type	Chain	Res	Atoms	RSCC	RSR	B-factors(Å <sup>2</sup> )	Q<0.9
2	IR3	A	1380	1/1	0.89	0.04	161,161,161,161	1
3	NAG	B	1380	14/15	0.96	0.14	46,60,66,68	0
3	NAG	A	1379	14/15	0.97	0.14	49,62,69,71	0
2	IR3	B	1379	1/1	0.97	0.07	96,96,96,96	1
2	IR3	A	1378	1/1	0.99	0.14	89,89,89,89	0
2	IR3	B	1381	1/1	0.99	0.16	96,96,96,96	0

## 6.5 Other polymers [i](#)

There are no such residues in this entry.