



Full wwPDB X-ray Structure Validation Report ⓘ

May 26, 2020 – 11:57 am BST

PDB ID : 4AG3
Title : Crystal structure of 3-ketoacyl-(acyl-carrier-protein) reductase (FabG) from *Pseudomonas aeruginosa* in complex with NADPH at 1.8Å resolution
Authors : Cukier, C.D.; Schnell, R.; Schneider, G.; Lindqvist, Y.
Deposited on : 2012-01-24
Resolution : 1.80 Å(reported)

This is a Full wwPDB X-ray Structure Validation Report for a publicly released PDB entry.

We welcome your comments at validation@mail.wwpdb.org

A user guide is available at

<https://www.wwpdb.org/validation/2017/XrayValidationReportHelp>

with specific help available everywhere you see the ⓘ symbol.

The following versions of software and data (see [references ⓘ](#)) were used in the production of this report:

MolProbity : 4.02b-467
Mogul : 1.8.5 (274361), CSD as541be (2020)
Xtriage (Phenix) : 1.13
EDS : 2.11
buster-report : 1.1.7 (2018)
Percentile statistics : 20191225.v01 (using entries in the PDB archive December 25th 2019)
Refmac : 5.8.0158
CCP4 : 7.0.044 (Gargrove)
Ideal geometry (proteins) : Engh & Huber (2001)
Ideal geometry (DNA, RNA) : Parkinson et al. (1996)
Validation Pipeline (wwPDB-VP) : 2.11

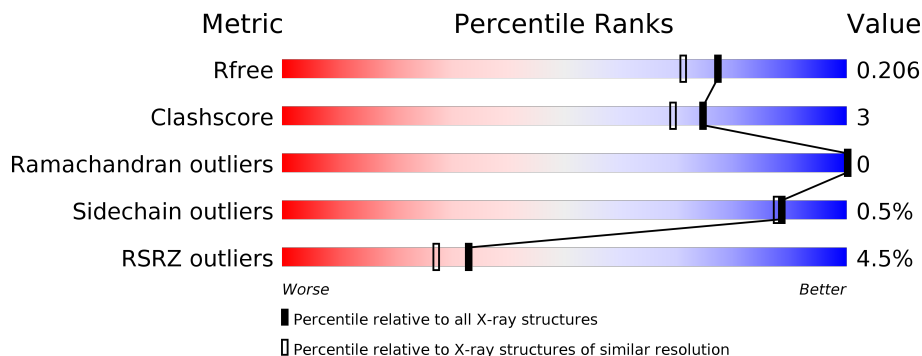
1 Overall quality at a glance

The following experimental techniques were used to determine the structure:

X-RAY DIFFRACTION

The reported resolution of this entry is 1.80 Å.

Percentile scores (ranging between 0-100) for global validation metrics of the entry are shown in the following graphic. The table shows the number of entries on which the scores are based.



Metric	Whole archive (#Entries)	Similar resolution (#Entries, resolution range(Å))
R_{free}	130704	5950 (1.80-1.80)
Clashscore	141614	6793 (1.80-1.80)
Ramachandran outliers	138981	6697 (1.80-1.80)
Sidechain outliers	138945	6696 (1.80-1.80)
RSRZ outliers	127900	5850 (1.80-1.80)

The table below summarises the geometric issues observed across the polymeric chains and their fit to the electron density. The red, orange, yellow and green segments on the lower bar indicate the fraction of residues that contain outliers for ≥ 3 , 2, 1 and 0 types of geometric quality criteria respectively. A grey segment represents the fraction of residues that are not modelled. The numeric value for each fraction is indicated below the corresponding segment, with a dot representing fractions $\leq 5\%$. The upper red bar (where present) indicates the fraction of residues that have poor fit to the electron density. The numeric value is given above the bar.

Mol	Chain	Length	Quality of chain
1	A	269	 6% 89% 5% 6%
1	B	269	 6% 87% 5% 8%
1	C	269	 4% 87% 7% 6%
1	D	269	 6% 83% 6% 11%

2 Entry composition i

There are 4 unique types of molecules in this entry. The entry contains 7881 atoms, of which 0 are hydrogens and 0 are deuteriums.

In the tables below, the ZeroOcc column contains the number of atoms modelled with zero occupancy, the AltConf column contains the number of residues with at least one atom in alternate conformation and the Trace column contains the number of residues modelled with at most 2 atoms.

- Molecule 1 is a protein called 3-OXOACYL-[ACYL-CARRIER-PROTEIN] REDUCTASE FABG.

Mol	Chain	Residues	Atoms					ZeroOcc	AltConf	Trace
			Total	C	N	O	S			
1	A	254	Total 1849	C 1168	N 324	O 350	S 7	0	7	0
1	B	247	Total 1775	C 1120	N 314	O 335	S 6	0	7	1
1	C	253	Total 1855	C 1169	N 328	O 351	S 7	0	8	1
1	D	240	Total 1677	C 1061	N 292	O 319	S 5	0	2	0

There are 88 discrepancies between the modelled and reference sequences:

Chain	Residue	Modelled	Actual	Comment	Reference
A	-21	MET	-	expression tag	UNP O54438
A	-20	HIS	-	expression tag	UNP O54438
A	-19	HIS	-	expression tag	UNP O54438
A	-18	HIS	-	expression tag	UNP O54438
A	-17	HIS	-	expression tag	UNP O54438
A	-16	HIS	-	expression tag	UNP O54438
A	-15	HIS	-	expression tag	UNP O54438
A	-14	SER	-	expression tag	UNP O54438
A	-13	SER	-	expression tag	UNP O54438
A	-12	GLY	-	expression tag	UNP O54438
A	-11	VAL	-	expression tag	UNP O54438
A	-10	ASP	-	expression tag	UNP O54438
A	-9	LEU	-	expression tag	UNP O54438
A	-8	GLY	-	expression tag	UNP O54438
A	-7	THR	-	expression tag	UNP O54438
A	-6	GLU	-	expression tag	UNP O54438
A	-5	ASN	-	expression tag	UNP O54438
A	-4	LEU	-	expression tag	UNP O54438
A	-3	TYR	-	expression tag	UNP O54438
A	-2	PHE	-	expression tag	UNP O54438

Continued on next page...

Continued from previous page...

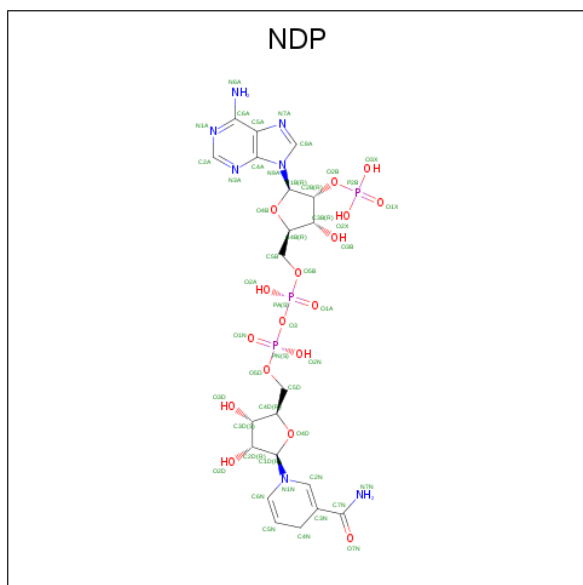
Chain	Residue	Modelled	Actual	Comment	Reference
A	-1	GLN	-	expression tag	UNP O54438
A	0	SER	-	expression tag	UNP O54438
B	-21	MET	-	expression tag	UNP O54438
B	-20	HIS	-	expression tag	UNP O54438
B	-19	HIS	-	expression tag	UNP O54438
B	-18	HIS	-	expression tag	UNP O54438
B	-17	HIS	-	expression tag	UNP O54438
B	-16	HIS	-	expression tag	UNP O54438
B	-15	HIS	-	expression tag	UNP O54438
B	-14	SER	-	expression tag	UNP O54438
B	-13	SER	-	expression tag	UNP O54438
B	-12	GLY	-	expression tag	UNP O54438
B	-11	VAL	-	expression tag	UNP O54438
B	-10	ASP	-	expression tag	UNP O54438
B	-9	LEU	-	expression tag	UNP O54438
B	-8	GLY	-	expression tag	UNP O54438
B	-7	THR	-	expression tag	UNP O54438
B	-6	GLU	-	expression tag	UNP O54438
B	-5	ASN	-	expression tag	UNP O54438
B	-4	LEU	-	expression tag	UNP O54438
B	-3	TYR	-	expression tag	UNP O54438
B	-2	PHE	-	expression tag	UNP O54438
B	-1	GLN	-	expression tag	UNP O54438
B	0	SER	-	expression tag	UNP O54438
C	-21	MET	-	expression tag	UNP O54438
C	-20	HIS	-	expression tag	UNP O54438
C	-19	HIS	-	expression tag	UNP O54438
C	-18	HIS	-	expression tag	UNP O54438
C	-17	HIS	-	expression tag	UNP O54438
C	-16	HIS	-	expression tag	UNP O54438
C	-15	HIS	-	expression tag	UNP O54438
C	-14	SER	-	expression tag	UNP O54438
C	-13	SER	-	expression tag	UNP O54438
C	-12	GLY	-	expression tag	UNP O54438
C	-11	VAL	-	expression tag	UNP O54438
C	-10	ASP	-	expression tag	UNP O54438
C	-9	LEU	-	expression tag	UNP O54438
C	-8	GLY	-	expression tag	UNP O54438
C	-7	THR	-	expression tag	UNP O54438
C	-6	GLU	-	expression tag	UNP O54438
C	-5	ASN	-	expression tag	UNP O54438
C	-4	LEU	-	expression tag	UNP O54438

Continued on next page...

Continued from previous page...

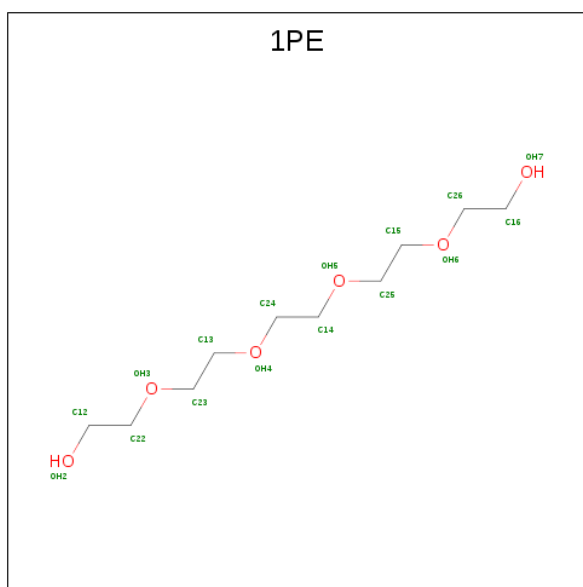
Chain	Residue	Modelled	Actual	Comment	Reference
C	-3	TYR	-	expression tag	UNP O54438
C	-2	PHE	-	expression tag	UNP O54438
C	-1	GLN	-	expression tag	UNP O54438
C	0	SER	-	expression tag	UNP O54438
D	-21	MET	-	expression tag	UNP O54438
D	-20	HIS	-	expression tag	UNP O54438
D	-19	HIS	-	expression tag	UNP O54438
D	-18	HIS	-	expression tag	UNP O54438
D	-17	HIS	-	expression tag	UNP O54438
D	-16	HIS	-	expression tag	UNP O54438
D	-15	HIS	-	expression tag	UNP O54438
D	-14	SER	-	expression tag	UNP O54438
D	-13	SER	-	expression tag	UNP O54438
D	-12	GLY	-	expression tag	UNP O54438
D	-11	VAL	-	expression tag	UNP O54438
D	-10	ASP	-	expression tag	UNP O54438
D	-9	LEU	-	expression tag	UNP O54438
D	-8	GLY	-	expression tag	UNP O54438
D	-7	THR	-	expression tag	UNP O54438
D	-6	GLU	-	expression tag	UNP O54438
D	-5	ASN	-	expression tag	UNP O54438
D	-4	LEU	-	expression tag	UNP O54438
D	-3	TYR	-	expression tag	UNP O54438
D	-2	PHE	-	expression tag	UNP O54438
D	-1	GLN	-	expression tag	UNP O54438
D	0	SER	-	expression tag	UNP O54438

- Molecule 2 is NADPH DIHYDRO-NICOTINAMIDE-ADENINE-DINUCLEOTIDE PHOSPHATE (three-letter code: NDP) (formula: C₂₁H₃₀N₇O₁₇P₃).



Mol	Chain	Residues	Atoms				ZeroOcc	AltConf		
			Total	C	N	O			P	
2	A	1	Total	48	21	7	17	3	0	0
2	B	1	Total	48	21	7	17	3	0	0
2	C	1	Total	48	21	7	17	3	0	0

- Molecule 3 is PENTAETHYLENE GLYCOL (three-letter code: 1PE) (formula: C₁₀H₂₂O₆).



Mol	Chain	Residues	Atoms			ZeroOcc	AltConf	
			Total	C	O			
3	A	1	Total	16	10	6	0	0

Continued on next page...

Continued from previous page...

Mol	Chain	Residues	Atoms	ZeroOcc	AltConf
3	A	1	Total C O 12 8 4	0	0
3	A	1	Total C O 6 4 2	0	0
3	B	1	Total C O 16 10 6	0	0
3	B	1	Total C O 16 10 6	0	0
3	C	1	Total C O 16 10 6	0	0
3	C	1	Total C O 6 4 2	0	0
3	D	1	Total C O 16 10 6	0	0

- Molecule 4 is water.

Mol	Chain	Residues	Atoms	ZeroOcc	AltConf
4	A	151	Total O 151 151	0	0
4	B	111	Total O 111 111	0	0
4	C	124	Total O 124 124	0	0
4	D	91	Total O 91 91	0	0

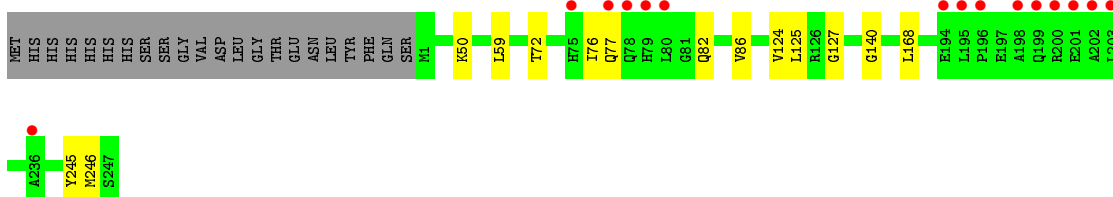
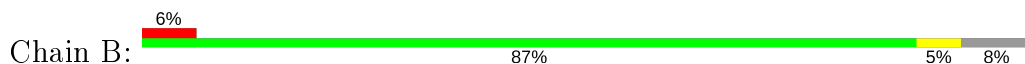
3 Residue-property plots [i](#)

These plots are drawn for all protein, RNA and DNA chains in the entry. The first graphic for a chain summarises the proportions of the various outlier classes displayed in the second graphic. The second graphic shows the sequence view annotated by issues in geometry and electron density. Residues are color-coded according to the number of geometric quality criteria for which they contain at least one outlier: green = 0, yellow = 1, orange = 2 and red = 3 or more. A red dot above a residue indicates a poor fit to the electron density ($RSRZ > 2$). Stretches of 2 or more consecutive residues without any outlier are shown as a green connector. Residues present in the sample, but not in the model, are shown in grey.

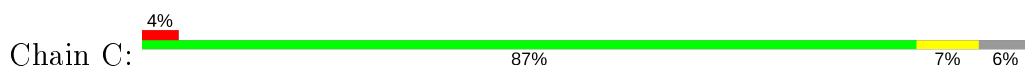
- Molecule 1: 3-OXOACYL-[ACYL-CARRIER-PROTEIN] REDUCTASE FABG



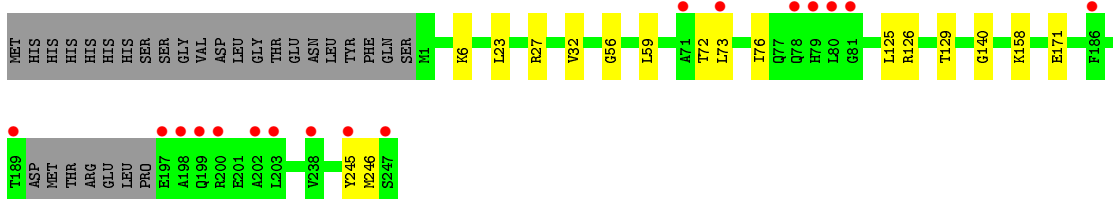
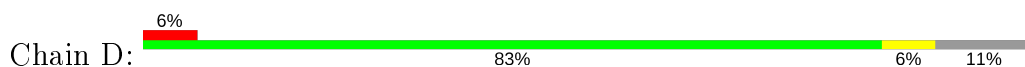
- Molecule 1: 3-OXOACYL-[ACYL-CARRIER-PROTEIN] REDUCTASE FABG



- Molecule 1: 3-OXOACYL-[ACYL-CARRIER-PROTEIN] REDUCTASE FABG



- Molecule 1: 3-OXOACYL-[ACYL-CARRIER-PROTEIN] REDUCTASE FABG



4 Data and refinement statistics

Property	Value	Source
Space group	P 2 21 21	Depositor
Cell constants a, b, c, α , β , γ	78.20Å 112.21Å 116.98Å 90.00° 90.00° 90.00°	Depositor
Resolution (Å)	80.98 – 1.80 46.84 – 1.80	Depositor EDS
% Data completeness (in resolution range)	99.7 (80.98-1.80) 99.7 (46.84-1.80)	Depositor EDS
R_{merge}	0.10	Depositor
R_{sym}	(Not available)	Depositor
$\langle I/\sigma(I) \rangle$ ¹	2.64 (at 1.79Å)	Xtrriage
Refinement program	REFMAC 5.5.0110	Depositor
R, R_{free}	0.158 , 0.192 0.171 , 0.206	Depositor DCC
R_{free} test set	4794 reflections (5.01%)	wwPDB-VP
Wilson B-factor (Å ²)	16.9	Xtrriage
Anisotropy	0.811	Xtrriage
Bulk solvent k_{sol} (e/Å ³), B_{sol} (Å ²)	0.37 , 54.9	EDS
L-test for twinning ²	$\langle L \rangle = 0.49$, $\langle L^2 \rangle = 0.32$	Xtrriage
Estimated twinning fraction	0.015 for -h,l,k	Xtrriage
F_o, F_c correlation	0.96	EDS
Total number of atoms	7881	wwPDB-VP
Average B, all atoms (Å ²)	20.0	wwPDB-VP

Xtrriage's analysis on translational NCS is as follows: *The largest off-origin peak in the Patterson function is 8.69% of the height of the origin peak. No significant pseudotranslation is detected.*

¹Intensities estimated from amplitudes.

²Theoretical values of $\langle |L| \rangle$, $\langle L^2 \rangle$ for acentric reflections are 0.5, 0.333 respectively for untwinned datasets, and 0.375, 0.2 for perfectly twinned datasets.

5 Model quality [i](#)

5.1 Standard geometry [i](#)

Bond lengths and bond angles in the following residue types are not validated in this section: NDP, 1PE

The Z score for a bond length (or angle) is the number of standard deviations the observed value is removed from the expected value. A bond length (or angle) with $|Z| > 5$ is considered an outlier worth inspection. RMSZ is the root-mean-square of all Z scores of the bond lengths (or angles).

Mol	Chain	Bond lengths		Bond angles	
		RMSZ	# Z >5	RMSZ	# Z >5
1	A	0.79	0/1891	0.71	1/2562 (0.0%)
1	B	0.77	0/1813	0.69	0/2460
1	C	0.80	0/1899	0.73	0/2570
1	D	0.75	0/1698	0.68	0/2302
All	All	0.78	0/7301	0.70	1/9894 (0.0%)

There are no bond length outliers.

All (1) bond angle outliers are listed below:

Mol	Chain	Res	Type	Atoms	Z	Observed(°)	Ideal(°)
1	A	119	ARG	NE-CZ-NH2	-5.17	117.71	120.30

There are no chirality outliers.

There are no planarity outliers.

5.2 Too-close contacts [i](#)

In the following table, the Non-H and H(model) columns list the number of non-hydrogen atoms and hydrogen atoms in the chain respectively. The H(added) column lists the number of hydrogen atoms added and optimized by MolProbity. The Clashes column lists the number of clashes within the asymmetric unit, whereas Symm-Clashes lists symmetry related clashes.

Mol	Chain	Non-H	H(model)	H(added)	Clashes	Symm-Clashes
1	A	1849	0	1879	10	0
1	B	1775	0	1783	11	0
1	C	1855	0	1891	11	0
1	D	1677	0	1686	18	0
2	A	48	0	26	1	0
2	B	48	0	26	1	0

Continued on next page...

Continued from previous page...

Mol	Chain	Non-H	H(model)	H(added)	Clashes	Symm-Clashes
2	C	48	0	26	0	0
3	A	34	0	43	2	0
3	B	32	0	44	2	0
3	C	22	0	29	0	0
3	D	16	0	22	1	0
4	A	151	0	0	2	1
4	B	111	0	0	3	0
4	C	124	0	0	0	0
4	D	91	0	0	2	1
All	All	7881	0	7455	47	1

The all-atom clashscore is defined as the number of clashes found per 1000 atoms (including hydrogen atoms). The all-atom clashscore for this structure is 3.

All (47) close contacts within the same asymmetric unit are listed below, sorted by their clash magnitude.

Atom-1	Atom-2	Interatomic distance (Å)	Clash overlap (Å)
1:B:246:MET:O	1:D:245[B]:TYR:OH	2.03	0.77
1:B:245[B]:TYR:OH	1:D:246:MET:O	2.03	0.76
1:A:203:LEU:HD22	1:A:244:MET:HE1	1.71	0.70
4:B:2108:HOH:O	1:D:245[B]:TYR:OH	2.12	0.67
1:D:59:LEU:HD22	1:D:76:ILE:HD11	1.79	0.63
1:B:59:LEU:HD11	1:B:72:THR:CG2	2.29	0.62
1:C:125:LEU:HD11	1:C:168:LEU:HD11	1.83	0.61
1:C:196:PRO:HD2	1:C:199:GLN:HE21	1.66	0.59
1:D:6:LYS:HD3	3:D:1248:1PE:H161	1.85	0.58
1:A:103:ASP:O	1:A:107[A]:PHE:HD2	1.86	0.58
1:A:94[B]:ARG:NH1	1:A:108[B]:ASP:OD2	2.38	0.56
1:B:50:LYS:HG3	3:B:1250:1PE:H232	1.89	0.55
1:D:126:ARG:HG2	4:D:2055:HOH:O	2.08	0.53
1:C:149:ALA:HA	1:D:171:GLU:HG3	1.90	0.51
1:B:82[B]:GLN:CD	1:B:127:GLY:HA3	2.31	0.51
1:D:23:LEU:O	1:D:27[A]:ARG:HG3	2.10	0.51
1:B:50:LYS:HE3	3:B:1250:1PE:H241	1.92	0.50
1:C:-3:TYR:CD1	1:C:-3:TYR:N	2.80	0.49
1:C:-3:TYR:HD1	1:C:-3:TYR:N	2.10	0.49
1:A:4:GLN:HE22	3:A:1250:1PE:H241	1.78	0.48
1:A:-2:PHE:HB2	3:A:1250:1PE:H232	1.97	0.47
1:D:59:LEU:CD2	1:D:76:ILE:HD11	2.44	0.47
1:B:77:GLN:NE2	1:B:82[B]:GLN:OE1	2.48	0.47
1:D:27[A]:ARG:NH1	4:D:2016:HOH:O	2.24	0.47

Continued on next page...

Continued from previous page...

Atom-1	Atom-2	Interatomic distance (Å)	Clash overlap (Å)
4:B:2108:HOH:O	1:D:245[B]:TYR:CZ	2.68	0.47
4:A:2141:HOH:O	1:D:246:MET:HA	2.15	0.46
1:A:196:PRO:HD2	1:A:199:GLN:HE21	1.81	0.46
1:A:94[A]:ARG:HD2	4:A:2070:HOH:O	2.16	0.46
1:C:32:VAL:O	1:C:56:GLY:HA3	2.16	0.46
1:D:125:LEU:O	1:D:129:THR:HG23	2.16	0.46
4:B:2108:HOH:O	1:D:245[B]:TYR:CE1	2.56	0.45
1:B:86:VAL:HG21	1:B:124:VAL:HG21	1.98	0.44
1:B:125:LEU:HD11	1:B:168:LEU:HD11	2.00	0.44
1:A:140:GLY:O	2:A:701:NDP:H6N	2.18	0.44
1:C:175:ARG:HD2	1:C:175:ARG:HA	1.92	0.44
1:B:59:LEU:HD13	1:B:76:ILE:HD11	2.01	0.43
1:C:195:LEU:O	1:C:200[A]:ARG:NH1	2.43	0.43
1:A:203:LEU:HA	1:A:203:LEU:HD23	1.88	0.42
1:C:74:GLU:O	1:C:78:GLN:HG3	2.19	0.42
1:D:73:LEU:HD13	1:D:73:LEU:HA	1.88	0.42
1:A:197[A]:GLU:OE1	1:A:200:ARG:NH1	2.52	0.41
1:C:94[A]:ARG:HG3	1:C:109:VAL:HG23	2.00	0.41
1:D:32:VAL:O	1:D:56:GLY:HA3	2.21	0.41
1:B:140:GLY:O	2:B:701:NDP:H6N	2.21	0.41
1:D:140:GLY:HA2	1:D:158:LYS:HD2	2.03	0.41
1:D:59:LEU:HD11	1:D:72:THR:CG2	2.51	0.41
1:C:216:GLU:O	1:C:220:LYS:HG2	2.20	0.40

All (1) symmetry-related close contacts are listed below. The label for Atom-2 includes the symmetry operator and encoded unit-cell translations to be applied.

Atom-1	Atom-2	Interatomic distance (Å)	Clash overlap (Å)
4:A:2059:HOH:O	4:D:2044:HOH:O[3_544]	2.09	0.11

5.3 Torsion angles [\(i\)](#)

5.3.1 Protein backbone [\(i\)](#)

In the following table, the Percentiles column shows the percent Ramachandran outliers of the chain as a percentile score with respect to all X-ray entries followed by that with respect to entries of similar resolution.

The Analysed column shows the number of residues for which the backbone conformation was analysed, and the total number of residues.

Mol	Chain	Analysed	Favoured	Allowed	Outliers	Percentiles	
1	A	259/269 (96%)	256 (99%)	3 (1%)	0	100	100
1	B	252/269 (94%)	246 (98%)	6 (2%)	0	100	100
1	C	259/269 (96%)	254 (98%)	5 (2%)	0	100	100
1	D	238/269 (88%)	232 (98%)	6 (2%)	0	100	100
All	All	1008/1076 (94%)	988 (98%)	20 (2%)	0	100	100

There are no Ramachandran outliers to report.

5.3.2 Protein sidechains [i](#)

In the following table, the Percentiles column shows the percent sidechain outliers of the chain as a percentile score with respect to all X-ray entries followed by that with respect to entries of similar resolution.

The Analysed column shows the number of residues for which the sidechain conformation was analysed, and the total number of residues.

Mol	Chain	Analysed	Rotameric	Outliers	Percentiles	
1	A	181/201 (90%)	181 (100%)	0	100	100
1	B	167/201 (83%)	167 (100%)	0	100	100
1	C	182/201 (90%)	178 (98%)	4 (2%)	52	39
1	D	155/201 (77%)	155 (100%)	0	100	100
All	All	685/804 (85%)	681 (99%)	4 (1%)	88	84

All (4) residues with a non-rotameric sidechain are listed below:

Mol	Chain	Res	Type
1	C	-3	TYR
1	C	228[A]	ASP
1	C	228[B]	ASP
1	C	244	MET

Some sidechains can be flipped to improve hydrogen bonding and reduce clashes. All (8) such sidechains are listed below:

Mol	Chain	Res	Type
1	A	77	GLN
1	A	199	GLN
1	B	77	GLN

Continued on next page...

Continued from previous page...

Mol	Chain	Res	Type
1	B	79	HIS
1	B	214	GLN
1	C	78	GLN
1	C	199	GLN
1	C	214	GLN

5.3.3 RNA [i](#)

There are no RNA molecules in this entry.

5.4 Non-standard residues in protein, DNA, RNA chains [i](#)

There are no non-standard protein/DNA/RNA residues in this entry.

5.5 Carbohydrates [i](#)

There are no carbohydrates in this entry.

5.6 Ligand geometry [i](#)

11 ligands are modelled in this entry.

In the following table, the Counts columns list the number of bonds (or angles) for which Mogul statistics could be retrieved, the number of bonds (or angles) that are observed in the model and the number of bonds (or angles) that are defined in the Chemical Component Dictionary. The Link column lists molecule types, if any, to which the group is linked. The Z score for a bond length (or angle) is the number of standard deviations the observed value is removed from the expected value. A bond length (or angle) with $|Z| > 2$ is considered an outlier worth inspection. RMSZ is the root-mean-square of all Z scores of the bond lengths (or angles).

Mol	Type	Chain	Res	Link	Bond lengths			Bond angles		
					Counts	RMSZ	$\# Z > 2$	Counts	RMSZ	$\# Z > 2$
3	1PE	D	1248	-	15,15,15	0.37	0	14,14,14	1.24	2 (14%)
3	1PE	C	1250	-	5,5,15	0.61	0	4,4,14	0.60	0
3	1PE	A	1250	-	11,11,15	0.63	0	10,10,14	1.00	0
2	NDP	C	701	-	45,52,52	1.47	7 (15%)	53,80,80	1.38	7 (13%)
3	1PE	A	1251	-	5,5,15	0.64	0	4,4,14	0.41	0
3	1PE	A	1249	-	15,15,15	0.40	0	14,14,14	1.04	1 (7%)
3	1PE	B	1249	-	15,15,15	0.66	0	14,14,14	0.71	0
3	1PE	C	1249	-	15,15,15	0.54	0	14,14,14	0.86	0

Mol	Type	Chain	Res	Link	Bond lengths			Bond angles		
					Counts	RMSZ	# Z > 2	Counts	RMSZ	# Z > 2
3	1PE	B	1250	-	15,15,15	0.79	0	14,14,14	0.77	0
2	NDP	B	701	-	45,52,52	1.40	6 (13%)	53,80,80	1.28	5 (9%)
2	NDP	A	701	-	45,52,52	1.37	7 (15%)	53,80,80	1.22	4 (7%)

In the following table, the Chirals column lists the number of chiral outliers, the number of chiral centers analysed, the number of these observed in the model and the number defined in the Chemical Component Dictionary. Similar counts are reported in the Torsion and Rings columns. '-' means no outliers of that kind were identified.

Mol	Type	Chain	Res	Link	Chirals	Torsions	Rings
3	1PE	D	1248	-	-	6/13/13/13	-
3	1PE	C	1250	-	-	1/3/3/13	-
3	1PE	A	1250	-	-	5/9/9/13	-
2	NDP	C	701	-	-	7/30/77/77	0/5/5/5
3	1PE	A	1251	-	-	0/3/3/13	-
3	1PE	A	1249	-	-	1/13/13/13	-
3	1PE	B	1249	-	-	3/13/13/13	-
3	1PE	C	1249	-	-	2/13/13/13	-
3	1PE	B	1250	-	-	8/13/13/13	-
2	NDP	B	701	-	-	6/30/77/77	0/5/5/5
2	NDP	A	701	-	-	10/30/77/77	0/5/5/5

All (20) bond length outliers are listed below:

Mol	Chain	Res	Type	Atoms	Z	Observed(Å)	Ideal(Å)
2	A	701	NDP	O7N-C7N	4.30	1.34	1.24
2	B	701	NDP	O7N-C7N	3.87	1.33	1.24
2	C	701	NDP	O7N-C7N	3.85	1.33	1.24
2	B	701	NDP	C6N-C5N	3.63	1.39	1.33
2	B	701	NDP	O4B-C1B	3.29	1.45	1.41
2	A	701	NDP	C4N-C5N	-3.17	1.40	1.48
2	C	701	NDP	C4N-C5N	-3.16	1.40	1.48
2	C	701	NDP	C6N-C5N	3.12	1.38	1.33
2	C	701	NDP	P2B-O2B	3.00	1.65	1.59
2	B	701	NDP	P2B-O2B	2.83	1.64	1.59
2	B	701	NDP	C4N-C5N	-2.82	1.41	1.48
2	A	701	NDP	C6N-C5N	2.70	1.38	1.33
2	C	701	NDP	P2B-O1X	2.47	1.58	1.50
2	A	701	NDP	P2B-O1X	2.46	1.58	1.50
2	B	701	NDP	P2B-O1X	2.37	1.58	1.50

Continued on next page...

Continued from previous page...

Mol	Chain	Res	Type	Atoms	Z	Observed(Å)	Ideal(Å)
2	C	701	NDP	C5B-C4B	2.28	1.58	1.51
2	C	701	NDP	C4N-C3N	2.18	1.54	1.49
2	A	701	NDP	O4B-C1B	2.13	1.44	1.41
2	A	701	NDP	C5B-C4B	2.12	1.58	1.51
2	A	701	NDP	C4N-C3N	2.05	1.54	1.49

All (19) bond angle outliers are listed below:

Mol	Chain	Res	Type	Atoms	Z	Observed(°)	Ideal(°)
2	C	701	NDP	N3A-C2A-N1A	-5.14	120.64	128.68
2	B	701	NDP	N3A-C2A-N1A	-4.51	121.62	128.68
2	C	701	NDP	C3N-C2N-N1N	-3.88	117.56	123.10
2	A	701	NDP	N3A-C2A-N1A	-3.52	123.17	128.68
2	A	701	NDP	C3N-C2N-N1N	-3.04	118.75	123.10
2	B	701	NDP	O2B-P2B-O1X	-2.88	98.27	109.39
2	A	701	NDP	O7N-C7N-C3N	-2.74	115.74	120.90
2	C	701	NDP	O7N-C7N-C3N	-2.55	116.10	120.90
2	B	701	NDP	C3N-C2N-N1N	-2.44	119.61	123.10
2	C	701	NDP	C1B-N9A-C4A	-2.42	122.39	126.64
2	A	701	NDP	O2A-PA-O1A	2.33	123.77	112.24
2	C	701	NDP	C2A-N1A-C6A	2.23	122.57	118.75
2	B	701	NDP	C1B-N9A-C4A	-2.23	122.73	126.64
2	C	701	NDP	O2N-PN-O1N	2.17	122.94	112.24
2	B	701	NDP	O7N-C7N-C3N	-2.13	116.88	120.90
3	D	1248	1PE	C24-OH4-C13	-2.10	104.19	113.29
3	D	1248	1PE	C23-OH3-C22	-2.01	104.56	113.29
2	C	701	NDP	O2A-PA-O1A	2.01	122.18	112.24
3	A	1249	1PE	C26-OH6-C15	-2.01	104.59	113.29

There are no chirality outliers.

All (49) torsion outliers are listed below:

Mol	Chain	Res	Type	Atoms
2	C	701	NDP	C2B-O2B-P2B-O1X
2	C	701	NDP	C2B-O2B-P2B-O3X
2	A	701	NDP	C5D-O5D-PN-O2N
3	A	1249	1PE	OH7-C16-C26-OH6
3	B	1250	1PE	OH4-C13-C23-OH3
3	A	1250	1PE	OH5-C14-C24-OH4
3	B	1249	1PE	OH4-C13-C23-OH3
3	B	1250	1PE	OH6-C15-C25-OH5
3	D	1248	1PE	OH4-C13-C23-OH3

Continued on next page...

Continued from previous page...

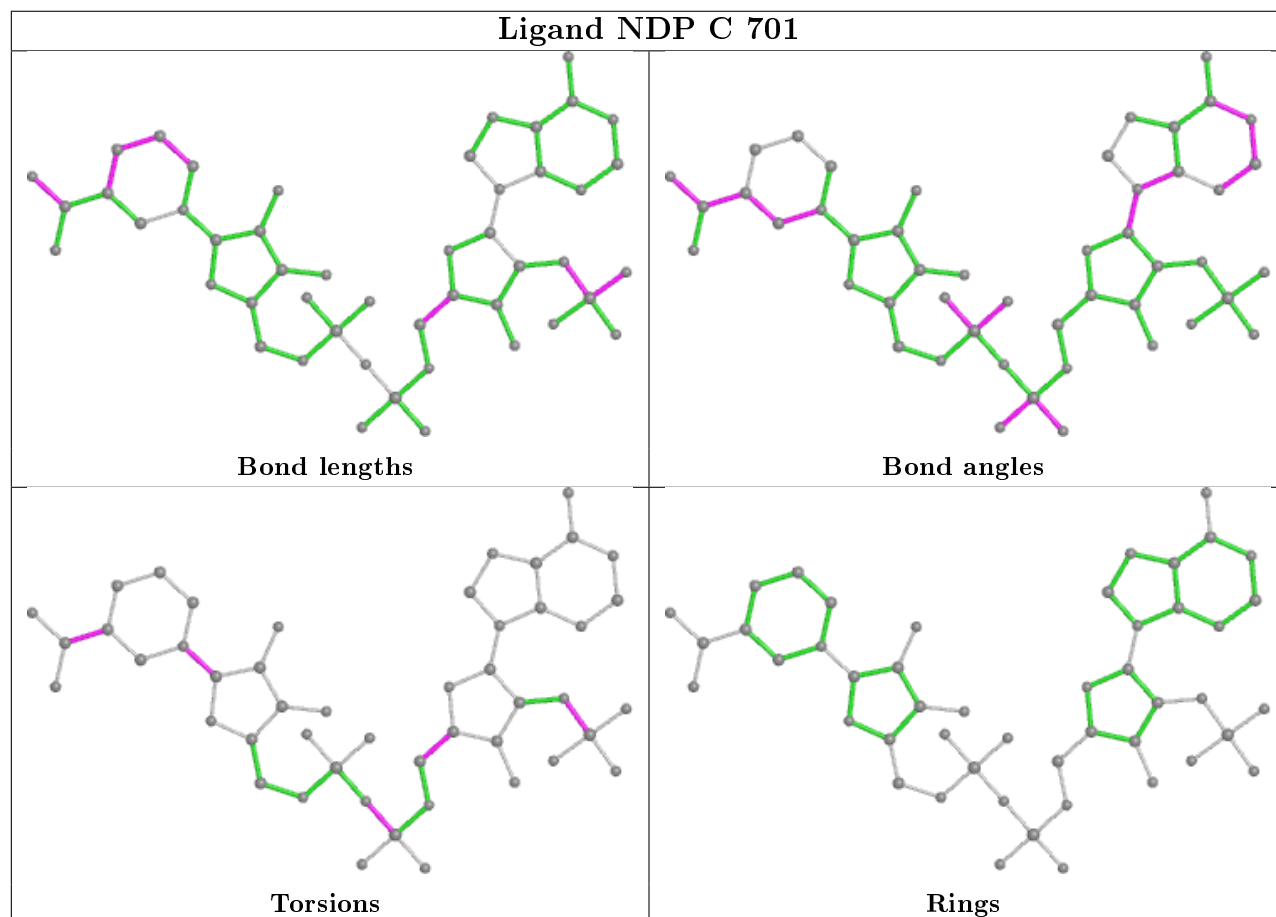
Mol	Chain	Res	Type	Atoms
3	B	1250	1PE	OH2-C12-C22-OH3
2	B	701	NDP	PN-O3-PA-O1A
2	B	701	NDP	O4D-C1D-N1N-C6N
3	C	1249	1PE	OH2-C12-C22-OH3
3	D	1248	1PE	OH6-C15-C25-OH5
3	C	1250	1PE	OH2-C12-C22-OH3
2	C	701	NDP	O4D-C1D-N1N-C6N
2	A	701	NDP	C2B-O2B-P2B-O1X
3	B	1250	1PE	C16-C26-OH6-C15
3	A	1250	1PE	C12-C22-OH3-C23
3	B	1249	1PE	C13-C23-OH3-C22
3	A	1250	1PE	C13-C23-OH3-C22
2	B	701	NDP	C2B-O2B-P2B-O3X
2	A	701	NDP	C2B-O2B-P2B-O3X
2	A	701	NDP	C5D-O5D-PN-O3
2	A	701	NDP	O4D-C1D-N1N-C6N
3	B	1250	1PE	C13-C23-OH3-C22
2	A	701	NDP	C5D-O5D-PN-O1N
3	B	1250	1PE	OH7-C16-C26-OH6
3	D	1248	1PE	C14-C24-OH4-C13
3	A	1250	1PE	OH4-C13-C23-OH3
3	D	1248	1PE	C12-C22-OH3-C23
3	B	1250	1PE	C14-C24-OH4-C13
3	D	1248	1PE	C24-C14-OH5-C25
3	D	1248	1PE	C23-C13-OH4-C24
2	B	701	NDP	PN-O3-PA-O2A
3	B	1249	1PE	C25-C15-OH6-C26
3	A	1250	1PE	C24-C14-OH5-C25
2	A	701	NDP	C1B-C2B-O2B-P2B
2	C	701	NDP	PN-O3-PA-O1A
3	C	1249	1PE	OH4-C13-C23-OH3
2	B	701	NDP	C2B-O2B-P2B-O1X
3	B	1250	1PE	OH5-C14-C24-OH4
2	C	701	NDP	O4B-C4B-C5B-O5B
2	C	701	NDP	PN-O3-PA-O2A
2	C	701	NDP	C2N-C3N-C7N-N7N
2	A	701	NDP	C2N-C3N-C7N-N7N
2	B	701	NDP	O4B-C4B-C5B-O5B
2	A	701	NDP	O4B-C4B-C5B-O5B
2	A	701	NDP	C3B-C2B-O2B-P2B

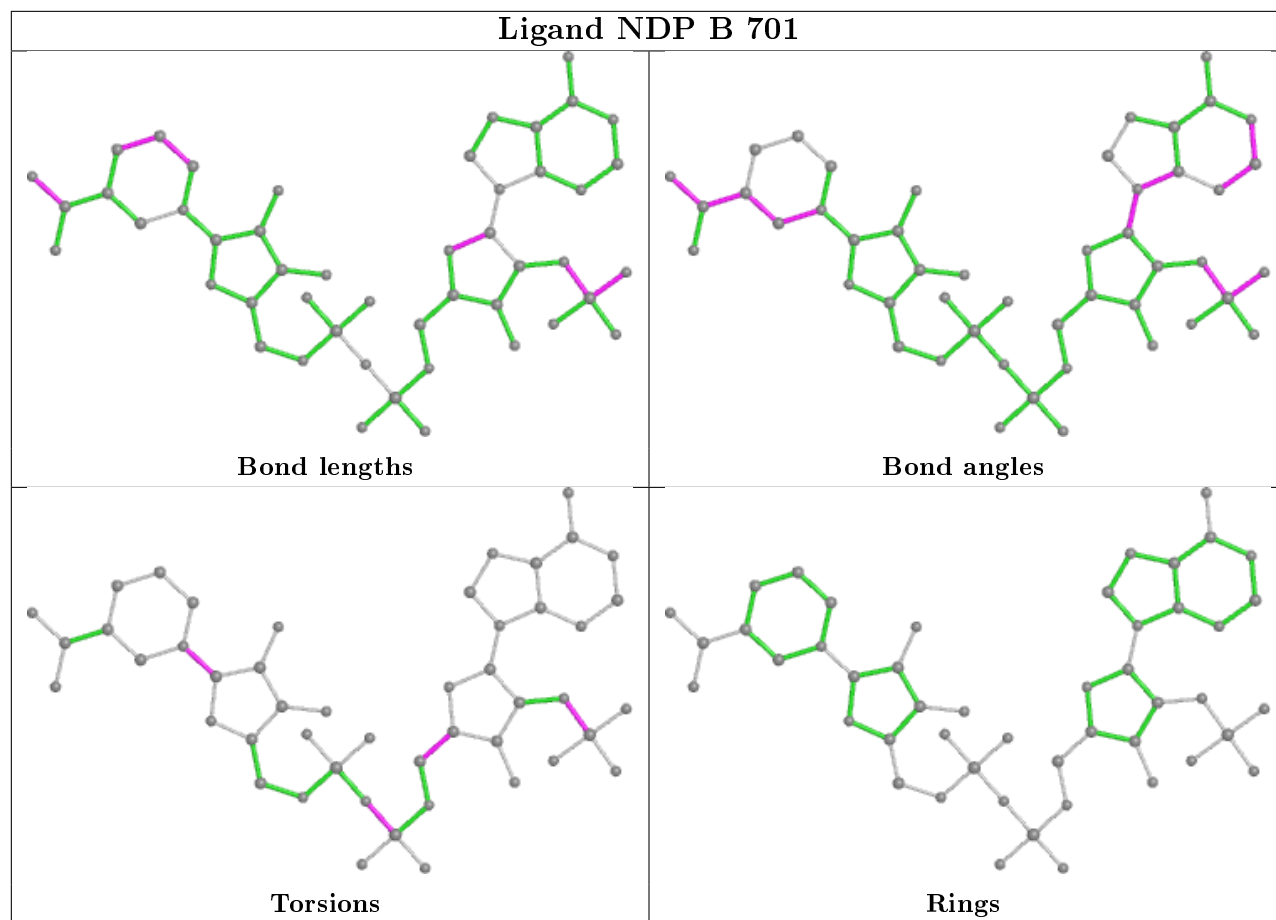
There are no ring outliers.

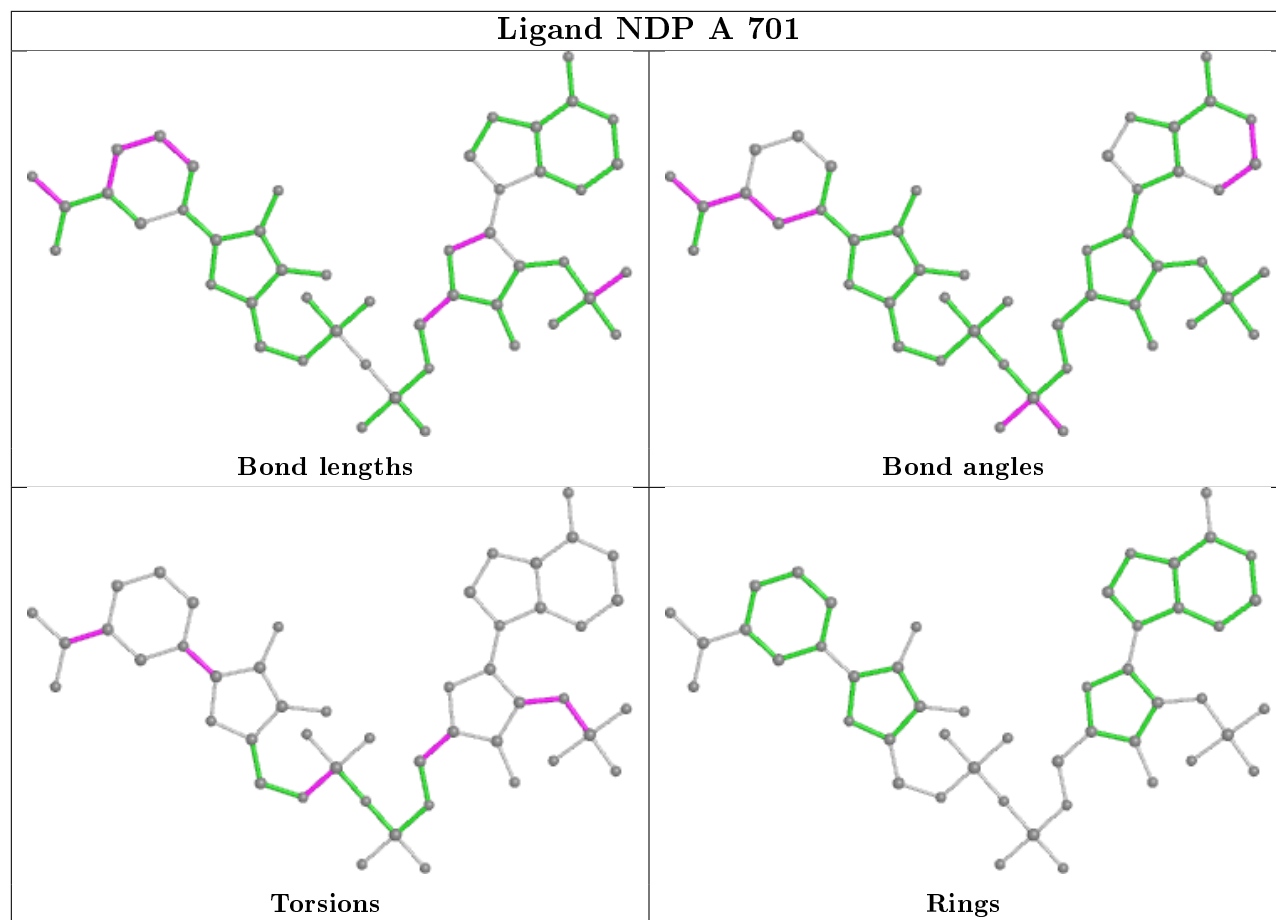
5 monomers are involved in 7 short contacts:

Mol	Chain	Res	Type	Clashes	Symm-Clashes
3	D	1248	1PE	1	0
3	A	1250	1PE	2	0
3	B	1250	1PE	2	0
2	B	701	NDP	1	0
2	A	701	NDP	1	0

The following is a two-dimensional graphical depiction of Mogul quality analysis of bond lengths, bond angles, torsion angles, and ring geometry for all instances of the Ligand of Interest. In addition, ligands with molecular weight > 250 and outliers as shown on the validation Tables will also be included. For torsion angles, if less than 5% of the Mogul distribution of torsion angles is within 10 degrees of the torsion angle in question, then that torsion angle is considered an outlier. Any bond that is central to one or more torsion angles identified as an outlier by Mogul will be highlighted in the graph. For rings, the root-mean-square deviation (RMSD) between the ring in question and similar rings identified by Mogul is calculated over all ring torsion angles. If the average RMSD is greater than 60 degrees and the minimal RMSD between the ring in question and any Mogul-identified rings is also greater than 60 degrees, then that ring is considered an outlier. The outliers are highlighted in purple. The color gray indicates Mogul did not find sufficient equivalents in the CSD to analyse the geometry.







5.7 Other polymers [\(i\)](#)

There are no such residues in this entry.

5.8 Polymer linkage issues [\(i\)](#)

There are no chain breaks in this entry.

6 Fit of model and data [i](#)

6.1 Protein, DNA and RNA chains [i](#)

In the following table, the column labelled ‘#RSRZ> 2’ contains the number (and percentage) of RSRZ outliers, followed by percent RSRZ outliers for the chain as percentile scores relative to all X-ray entries and entries of similar resolution. The OWAB column contains the minimum, median, 95th percentile and maximum values of the occupancy-weighted average B-factor per residue. The column labelled ‘Q< 0.9’ lists the number of (and percentage) of residues with an average occupancy less than 0.9.

Mol	Chain	Analysed	<RSRZ>	#RSRZ>2	OWAB(Å ²)	Q<0.9
1	A	254/269 (94%)	-0.14	3 (1%) 79 76	10, 17, 34, 46	0
1	B	247/269 (91%)	0.01	15 (6%) 21 16	10, 19, 44, 56	0
1	C	253/269 (94%)	0.00	10 (3%) 38 32	10, 17, 37, 56	0
1	D	240/269 (89%)	0.11	17 (7%) 16 12	10, 20, 46, 64	0
All	All	994/1076 (92%)	-0.01	45 (4%) 33 27	10, 18, 40, 64	0

All (45) RSRZ outliers are listed below:

Mol	Chain	Res	Type	RSRZ
1	D	79	HIS	5.1
1	D	198	ALA	5.1
1	C	-5	ASN	4.8
1	C	-4	LEU	4.5
1	B	196	PRO	4.3
1	B	198	ALA	4.1
1	B	200	ARG	4.1
1	D	202	ALA	3.9
1	C	198	ALA	3.9
1	D	81	GLY	3.8
1	D	73	LEU	3.6
1	D	199	GLN	3.6
1	D	78	GLN	3.5
1	C	-3	TYR	3.5
1	D	189	THR	3.4
1	B	201	GLU	3.3
1	C	195	LEU	3.2
1	B	202	ALA	3.1
1	B	80	LEU	3.1
1	B	78	GLN	2.9
1	D	71	ALA	2.9

Continued on next page...

Continued from previous page...

Mol	Chain	Res	Type	RSRZ
1	B	79	HIS	2.9
1	B	199	GLN	2.9
1	C	-2	PHE	2.8
1	C	200[A]	ARG	2.8
1	B	203	LEU	2.7
1	B	194	GLU	2.7
1	B	75	HIS	2.7
1	B	195	LEU	2.6
1	C	196	PRO	2.6
1	D	247	SER	2.6
1	D	186	PHE	2.5
1	D	200	ARG	2.5
1	D	80	LEU	2.4
1	B	77	GLN	2.4
1	A	197[A]	GLU	2.3
1	C	199	GLN	2.3
1	D	203	LEU	2.3
1	B	236	ALA	2.2
1	A	247	SER	2.2
1	D	197	GLU	2.1
1	D	245[A]	TYR	2.1
1	C	238	VAL	2.1
1	A	238	VAL	2.0
1	D	238	VAL	2.0

6.2 Non-standard residues in protein, DNA, RNA chains [i](#)

There are no non-standard protein/DNA/RNA residues in this entry.

6.3 Carbohydrates [i](#)

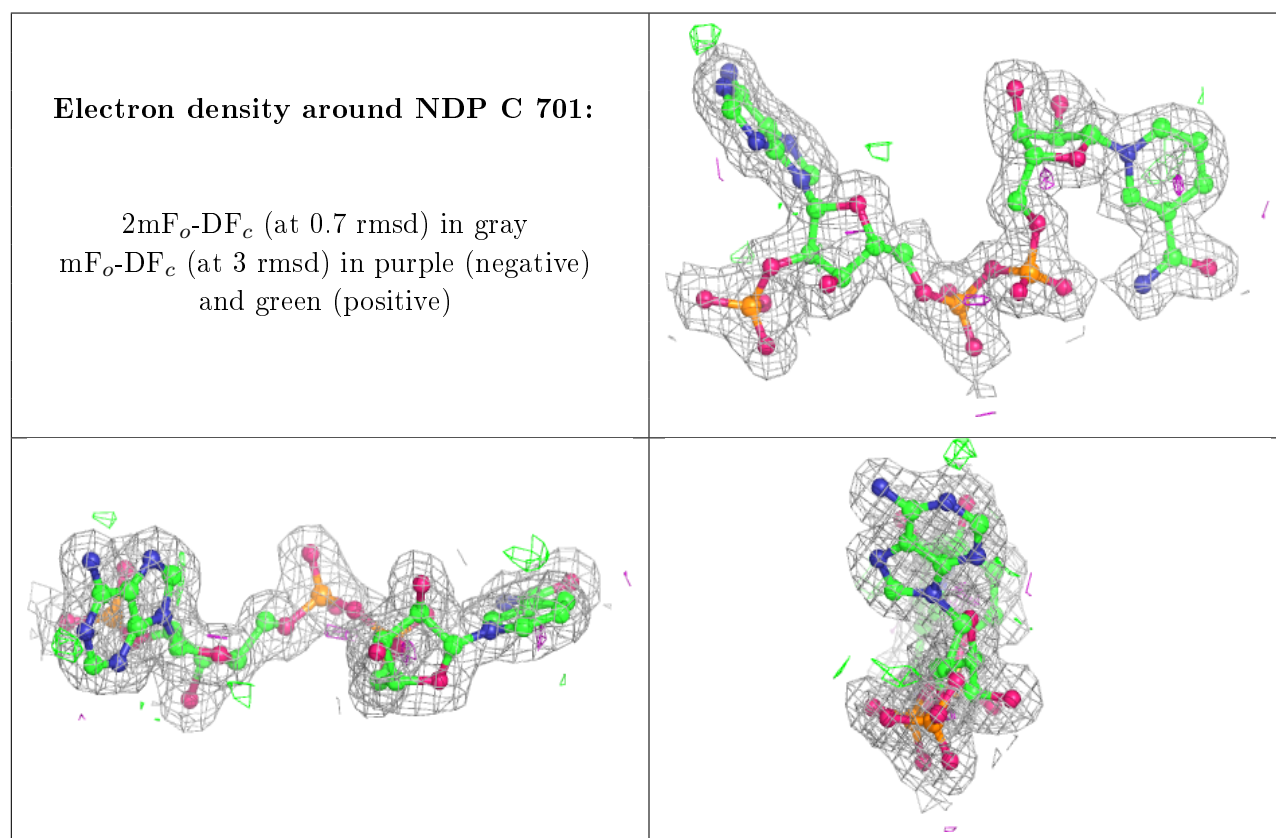
There are no carbohydrates in this entry.

6.4 Ligands [i](#)

In the following table, the Atoms column lists the number of modelled atoms in the group and the number defined in the chemical component dictionary. The B-factors column lists the minimum, median, 95th percentile and maximum values of B factors of atoms in the group. The column labelled 'Q< 0.9' lists the number of atoms with occupancy less than 0.9.

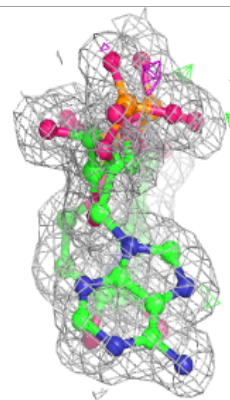
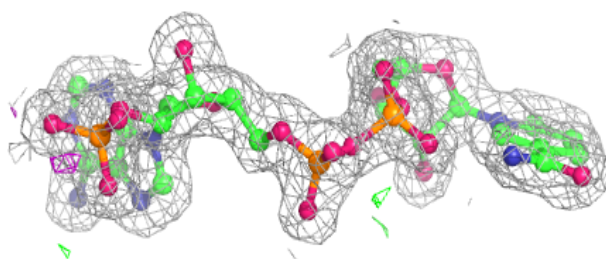
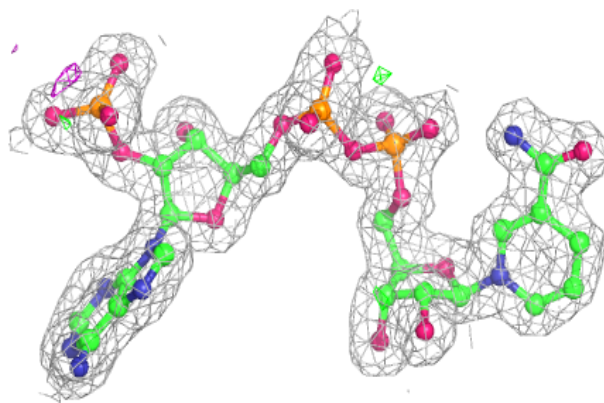
Mol	Type	Chain	Res	Atoms	RSCC	RSR	B-factors(\AA^2)	Q<0.9
3	1PE	A	1250	12/16	0.80	0.17	32,37,43,43	0
3	1PE	B	1250	16/16	0.83	0.18	40,44,48,48	0
3	1PE	C	1250	6/16	0.84	0.13	41,41,42,44	0
3	1PE	A	1251	6/16	0.87	0.15	31,33,35,38	0
3	1PE	B	1249	16/16	0.90	0.19	34,38,47,48	0
3	1PE	D	1248	16/16	0.93	0.23	39,41,48,51	0
3	1PE	C	1249	16/16	0.95	0.10	30,32,43,43	0
3	1PE	A	1249	16/16	0.96	0.08	24,26,36,39	0
2	NDP	C	701	48/48	0.98	0.07	9,14,17,19	0
2	NDP	B	701	48/48	0.98	0.07	11,16,19,21	0
2	NDP	A	701	48/48	0.98	0.07	12,16,21,22	0

The following is a graphical depiction of the model fit to experimental electron density of all instances of the Ligand of Interest. In addition, ligands with molecular weight > 250 and outliers as shown on the geometry validation Tables will also be included. Each fit is shown from different orientation to approximate a three-dimensional view.

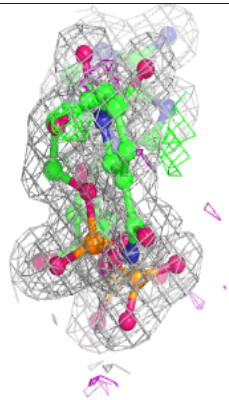
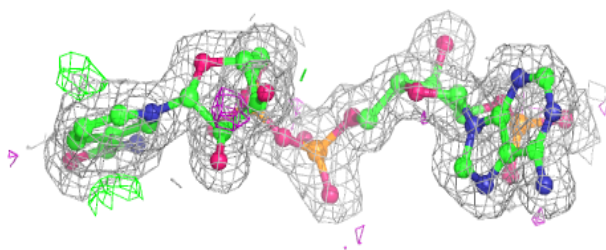
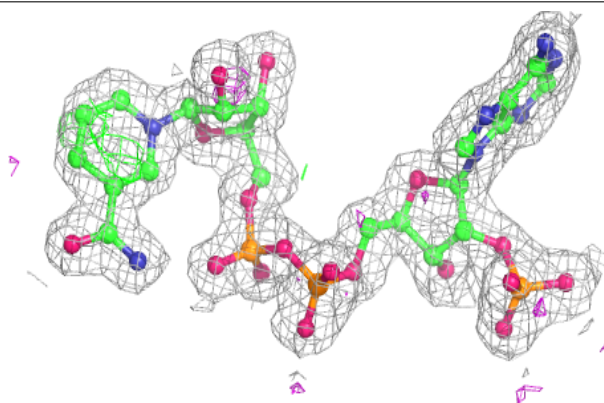


Electron density around NDP B 701:

$2mF_o-DF_c$ (at 0.7 rmsd) in gray
 mF_o-DF_c (at 3 rmsd) in purple (negative)
and green (positive)

**Electron density around NDP A 701:**

$2mF_o-DF_c$ (at 0.7 rmsd) in gray
 mF_o-DF_c (at 3 rmsd) in purple (negative)
and green (positive)



6.5 Other polymers

There are no such residues in this entry.