



wwPDB X-ray Structure Validation Summary Report ⓘ

Dec 13, 2023 – 01:18 am GMT

PDB ID : 3ZJC
Title : Crystal structure of GMPPNP-bound human GIMAP7 L100Q variant
Authors : Schwefel, D.; Daumke, O.
Deposited on : 2013-01-17
Resolution : 3.15 Å(reported)

This is a wwPDB X-ray Structure Validation Summary Report for a publicly released PDB entry.

We welcome your comments at validation@mail.wwpdb.org

A user guide is available at

<https://www.wwpdb.org/validation/2017/XrayValidationReportHelp>

with specific help available everywhere you see the ⓘ symbol.

The types of validation reports are described at

<http://www.wwpdb.org/validation/2017/FAQs#types>.

The following versions of software and data (see [references ⓘ](#)) were used in the production of this report:

MolProbity : 4.02b-467
Mogul : 1.8.4, CSD as541be (2020)
Xtriage (Phenix) : 1.13
EDS : 2.36
buster-report : 1.1.7 (2018)
Percentile statistics : 20191225.v01 (using entries in the PDB archive December 25th 2019)
Refmac : 5.8.0158
CCP4 : 7.0.044 (Gargrove)
Ideal geometry (proteins) : Engh & Huber (2001)
Ideal geometry (DNA, RNA) : Parkinson et al. (1996)
Validation Pipeline (wwPDB-VP) : 2.36

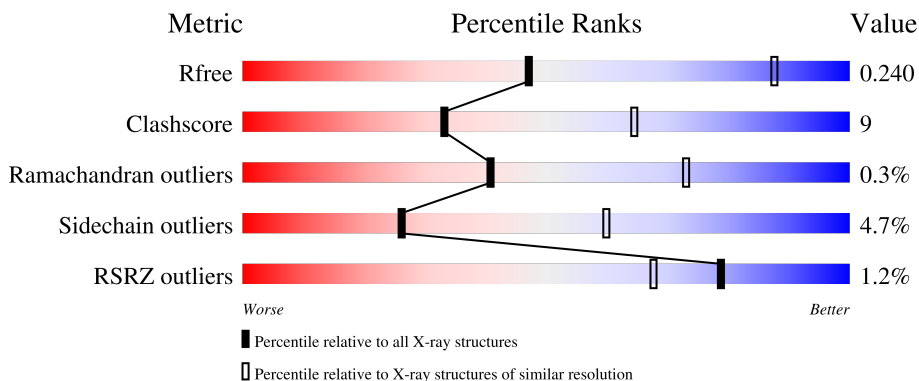
1 Overall quality at a glance i

The following experimental techniques were used to determine the structure:

X-RAY DIFFRACTION

The reported resolution of this entry is 3.15 Å.

Percentile scores (ranging between 0-100) for global validation metrics of the entry are shown in the following graphic. The table shows the number of entries on which the scores are based.




Metric	Whole archive (#Entries)	Similar resolution (#Entries, resolution range(Å))
R_{free}	130704	1665 (3.20-3.12)
Clashscore	141614	1804 (3.20-3.12)
Ramachandran outliers	138981	1770 (3.20-3.12)
Sidechain outliers	138945	1769 (3.20-3.12)
RSRZ outliers	127900	1616 (3.20-3.12)

The table below summarises the geometric issues observed across the polymeric chains and their fit to the electron density. The red, orange, yellow and green segments of the lower bar indicate the fraction of residues that contain outliers for ≥ 3 , 2, 1 and 0 types of geometric quality criteria respectively. A grey segment represents the fraction of residues that are not modelled. The numeric value for each fraction is indicated below the corresponding segment, with a dot representing fractions $\leq 5\%$. The upper red bar (where present) indicates the fraction of residues that have poor fit to the electron density. The numeric value is given above the bar.

Mol	Chain	Length	Quality of chain
1	A	305	 67% 25% • 7%
1	B	305	 2% 62% 22% • 16%
1	C	305	 65% 18% • 17%
1	D	305	 2% 60% 12% • 27%
1	E	305	 74% 18% • 6%

Continued on next page...

Continued from previous page...

Mol	Chain	Length	Quality of chain
1	F	305	 <p>A horizontal bar chart representing the quality of the chain. The bar is divided into four segments: a small red segment (2%), a large green segment (65%), a yellow segment (17%), and a grey segment (17%).</p>

2 Entry composition [i](#)

There are 4 unique types of molecules in this entry. The entry contains 12623 atoms, of which 0 are hydrogens and 0 are deuteriums.

In the tables below, the ZeroOcc column contains the number of atoms modelled with zero occupancy, the AltConf column contains the number of residues with at least one atom in alternate conformation and the Trace column contains the number of residues modelled with at most 2 atoms.

- Molecule 1 is a protein called GTPASE IMAP FAMILY MEMBER 7.

Mol	Chain	Residues	Atoms					ZeroOcc	AltConf	Trace
			Total	C	N	O	S			
1	A	283	2275	1429	392	441	13	266	0	0
1	B	257	2054	1287	360	395	12	146	0	0
1	C	254	2022	1268	352	390	12	183	0	0
1	D	223	1752	1109	298	333	12	218	0	0
1	E	286	2304	1450	398	443	13	313	0	0
1	F	252	2016	1275	346	383	12	285	0	0

There are 36 discrepancies between the modelled and reference sequences:

Chain	Residue	Modelled	Actual	Comment	Reference
A	-4	GLY	-	expression tag	UNP Q8NHV1
A	-3	PRO	-	expression tag	UNP Q8NHV1
A	-2	LEU	-	expression tag	UNP Q8NHV1
A	-1	GLY	-	expression tag	UNP Q8NHV1
A	0	SER	-	expression tag	UNP Q8NHV1
A	100	GLN	LEU	engineered mutation	UNP Q8NHV1
B	-4	GLY	-	expression tag	UNP Q8NHV1
B	-3	PRO	-	expression tag	UNP Q8NHV1
B	-2	LEU	-	expression tag	UNP Q8NHV1
B	-1	GLY	-	expression tag	UNP Q8NHV1
B	0	SER	-	expression tag	UNP Q8NHV1
B	100	GLN	LEU	engineered mutation	UNP Q8NHV1
C	-4	GLY	-	expression tag	UNP Q8NHV1
C	-3	PRO	-	expression tag	UNP Q8NHV1
C	-2	LEU	-	expression tag	UNP Q8NHV1
C	-1	GLY	-	expression tag	UNP Q8NHV1
C	0	SER	-	expression tag	UNP Q8NHV1

Continued on next page...

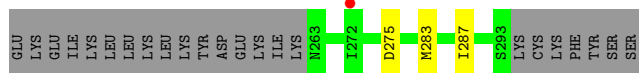
Continued from previous page...

Chain	Residue	Modelled	Actual	Comment	Reference
C	100	GLN	LEU	engineered mutation	UNP Q8NHV1
D	-4	GLY	-	expression tag	UNP Q8NHV1
D	-3	PRO	-	expression tag	UNP Q8NHV1
D	-2	LEU	-	expression tag	UNP Q8NHV1
D	-1	GLY	-	expression tag	UNP Q8NHV1
D	0	SER	-	expression tag	UNP Q8NHV1
D	100	GLN	LEU	engineered mutation	UNP Q8NHV1
E	-4	GLY	-	expression tag	UNP Q8NHV1
E	-3	PRO	-	expression tag	UNP Q8NHV1
E	-2	LEU	-	expression tag	UNP Q8NHV1
E	-1	GLY	-	expression tag	UNP Q8NHV1
E	0	SER	-	expression tag	UNP Q8NHV1
E	100	GLN	LEU	engineered mutation	UNP Q8NHV1
F	-4	GLY	-	expression tag	UNP Q8NHV1
F	-3	PRO	-	expression tag	UNP Q8NHV1
F	-2	LEU	-	expression tag	UNP Q8NHV1
F	-1	GLY	-	expression tag	UNP Q8NHV1
F	0	SER	-	expression tag	UNP Q8NHV1
F	100	GLN	LEU	engineered mutation	UNP Q8NHV1

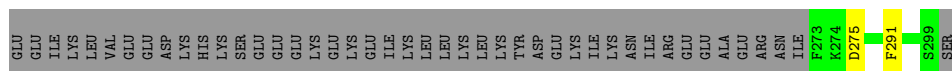
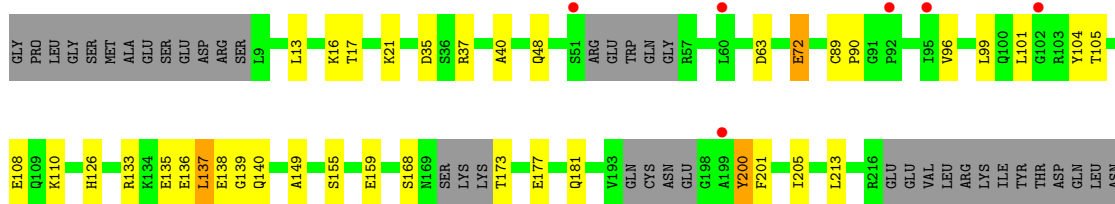
- Molecule 2 is MAGNESIUM ION (three-letter code: MG) (formula: Mg).

Mol	Chain	Residues	Atoms	ZeroOcc	AltConf
2	A	1	Total Mg 1 1	0	0
2	B	1	Total Mg 1 1	0	0
2	C	1	Total Mg 1 1	0	0
2	D	1	Total Mg 1 1	0	0
2	E	1	Total Mg 1 1	0	0
2	F	1	Total Mg 1 1	0	0

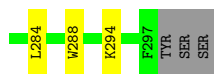
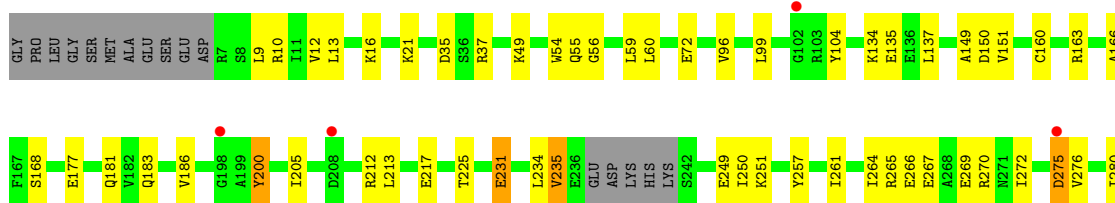
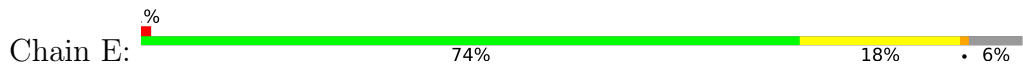
- Molecule 3 is PHOSPHOAMINOPHOSPHONIC ACID-GUANYLATE ESTER (three-letter code: GNP) (formula: C₁₀H₁₇N₆O₁₃P₃).



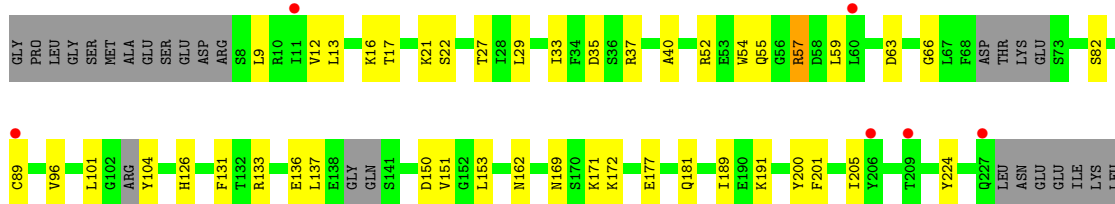
● Molecule 1: GTPASE IMAP FAMILY MEMBER 7



● Molecule 1: GTPASE IMAP FAMILY MEMBER 7



● Molecule 1: GTPASE IMAP FAMILY MEMBER 7



4 Data and refinement statistics

Property	Value	Source
Space group	P 1	Depositor
Cell constants a, b, c, α , β , γ	45.85Å 90.94Å 114.55Å 77.30° 85.23° 89.23°	Depositor
Resolution (Å)	32.44 – 3.15 45.69 – 3.15	Depositor EDS
% Data completeness (in resolution range)	95.7 (32.44-3.15) 95.7 (45.69-3.15)	Depositor EDS
R_{merge}	0.11	Depositor
R_{sym}	(Not available)	Depositor
$\langle I/\sigma(I) \rangle$ ¹	1.85 (at 3.12Å)	Xtrriage
Refinement program	PHENIX (PHENIX.REFINE: 1.8.1_1168)	Depositor
R, R_{free}	0.234 , 0.305 0.240 , 0.240	Depositor DCC
R_{free} test set	1498 reflections (5.03%)	wwPDB-VP
Wilson B-factor (Å ²)	48.5	Xtrriage
Anisotropy	0.641	Xtrriage
Bulk solvent k_{sol} (e/Å ³), B_{sol} (Å ²)	0.27 , 74.5	EDS
L-test for twinning ²	$\langle L \rangle = 0.47$, $\langle L^2 \rangle = 0.30$	Xtrriage
Estimated twinning fraction	No twinning to report.	Xtrriage
F_o, F_c correlation	0.88	EDS
Total number of atoms	12623	wwPDB-VP
Average B, all atoms (Å ²)	71.0	wwPDB-VP

Xtrriage's analysis on translational NCS is as follows: *The largest off-origin peak in the Patterson function is 4.54% of the height of the origin peak. No significant pseudotranslation is detected.*

¹Intensities estimated from amplitudes.

²Theoretical values of $\langle |L| \rangle$, $\langle L^2 \rangle$ for acentric reflections are 0.5, 0.333 respectively for untwinned datasets, and 0.375, 0.2 for perfectly twinned datasets.

5 Model quality [i](#)

5.1 Standard geometry [i](#)

Bond lengths and bond angles in the following residue types are not validated in this section: MG, GNP

The Z score for a bond length (or angle) is the number of standard deviations the observed value is removed from the expected value. A bond length (or angle) with $|Z| > 5$ is considered an outlier worth inspection. RMSZ is the root-mean-square of all Z scores of the bond lengths (or angles).

Mol	Chain	Bond lengths		Bond angles	
		RMSZ	# Z >5	RMSZ	# Z >5
1	A	0.27	0/2302	0.52	1/3080 (0.0%)
1	B	0.29	0/2080	0.49	0/2787
1	C	0.28	0/2048	0.49	0/2747
1	D	0.25	0/1774	0.45	0/2375
1	E	0.27	0/2332	0.49	0/3119
1	F	0.25	0/2039	0.45	0/2726
All	All	0.27	0/12575	0.48	1/16834 (0.0%)

There are no bond length outliers.

All (1) bond angle outliers are listed below:

Mol	Chain	Res	Type	Atoms	Z	Observed(°)	Ideal(°)
1	A	188	LEU	CA-CB-CG	5.49	127.92	115.30

There are no chirality outliers.

There are no planarity outliers.

5.2 Too-close contacts [i](#)

In the following table, the Non-H and H(model) columns list the number of non-hydrogen atoms and hydrogen atoms in the chain respectively. The H(added) column lists the number of hydrogen atoms added and optimized by MolProbity. The Clashes column lists the number of clashes within the asymmetric unit, whereas Symm-Clashes lists symmetry-related clashes.

Mol	Chain	Non-H	H(model)	H(added)	Clashes	Symm-Clashes
1	A	2275	0	2306	44	0
1	B	2054	0	2080	41	0
1	C	2022	0	2038	29	0
1	D	1752	0	1770	24	0

Continued on next page...

Continued from previous page...

Mol	Chain	Non-H	H(model)	H(added)	Clashes	Symm-Clashes
1	E	2304	0	2351	35	0
1	F	2016	0	2055	28	0
2	A	1	0	0	0	0
2	B	1	0	0	0	0
2	C	1	0	0	0	0
2	D	1	0	0	0	0
2	E	1	0	0	0	0
2	F	1	0	0	0	0
3	A	32	0	13	1	0
3	B	32	0	13	2	0
3	C	32	0	13	3	0
3	D	32	0	13	1	0
3	E	32	0	13	1	0
3	F	32	0	13	2	0
4	A	2	0	0	2	0
All	All	12623	0	12678	187	0

The all-atom clashscore is defined as the number of clashes found per 1000 atoms (including hydrogen atoms). The all-atom clashscore for this structure is 9.

The worst 5 of 187 close contacts within the same asymmetric unit are listed below, sorted by their clash magnitude.

Atom-1	Atom-2	Interatomic distance (Å)	Clash overlap (Å)
1:A:35:ASP:OD2	1:A:37:ARG:NH1	2.12	0.83
1:A:240:HIS:HA	1:E:251:LYS:HG2	1.63	0.81
1:B:18:GLY:H	3:B:1295:GNP:HNB3	1.31	0.79
1:C:18:GLY:H	3:C:1295:GNP:HNB3	1.32	0.77
1:E:135:GLU:OE2	3:E:1299:GNP:N2	2.20	0.72

There are no symmetry-related clashes.

5.3 Torsion angles [i](#)

5.3.1 Protein backbone [i](#)

In the following table, the Percentiles column shows the percent Ramachandran outliers of the chain as a percentile score with respect to all X-ray entries followed by that with respect to entries of similar resolution.

The Analysed column shows the number of residues for which the backbone conformation was analysed, and the total number of residues.

Mol	Chain	Analysed	Favoured	Allowed	Outliers	Percentiles	
1	A	277/305 (91%)	270 (98%)	7 (2%)	0	100	100
1	B	253/305 (83%)	246 (97%)	6 (2%)	1 (0%)	34	68
1	C	250/305 (82%)	242 (97%)	7 (3%)	1 (0%)	34	68
1	D	213/305 (70%)	208 (98%)	4 (2%)	1 (0%)	29	65
1	E	282/305 (92%)	274 (97%)	7 (2%)	1 (0%)	34	68
1	F	240/305 (79%)	237 (99%)	2 (1%)	1 (0%)	34	68
All	All	1515/1830 (83%)	1477 (98%)	33 (2%)	5 (0%)	41	73

All (5) Ramachandran outliers are listed below:

Mol	Chain	Res	Type
1	B	55	GLN
1	E	55	GLN
1	F	55	GLN
1	C	55	GLN
1	D	138	GLU

5.3.2 Protein sidechains [i](#)

In the following table, the Percentiles column shows the percent sidechain outliers of the chain as a percentile score with respect to all X-ray entries followed by that with respect to entries of similar resolution.

The Analysed column shows the number of residues for which the sidechain conformation was analysed, and the total number of residues.

Mol	Chain	Analysed	Rotameric	Outliers	Percentiles	
1	A	254/273 (93%)	239 (94%)	15 (6%)	19	51
1	B	228/273 (84%)	218 (96%)	10 (4%)	28	61
1	C	224/273 (82%)	212 (95%)	12 (5%)	22	55
1	D	194/273 (71%)	186 (96%)	8 (4%)	30	63
1	E	257/273 (94%)	246 (96%)	11 (4%)	29	62
1	F	224/273 (82%)	215 (96%)	9 (4%)	31	64
All	All	1381/1638 (84%)	1316 (95%)	65 (5%)	26	60

5 of 65 residues with a non-rotameric sidechain are listed below:

Mol	Chain	Res	Type
1	F	57	ARG
1	F	162	ASN
1	B	291	PHE
1	B	284	LEU
1	F	191	LYS

Sometimes sidechains can be flipped to improve hydrogen bonding and reduce clashes. All (3) such sidechains are listed below:

Mol	Chain	Res	Type
1	A	100	GLN
1	D	48	GLN
1	F	196	ASN

5.3.3 RNA [i](#)

There are no RNA molecules in this entry.

5.4 Non-standard residues in protein, DNA, RNA chains [i](#)

There are no non-standard protein/DNA/RNA residues in this entry.

5.5 Carbohydrates [i](#)

There are no monosaccharides in this entry.

5.6 Ligand geometry [i](#)

Of 12 ligands modelled in this entry, 6 are monoatomic - leaving 6 for Mogul analysis.

In the following table, the Counts columns list the number of bonds (or angles) for which Mogul statistics could be retrieved, the number of bonds (or angles) that are observed in the model and the number of bonds (or angles) that are defined in the Chemical Component Dictionary. The Link column lists molecule types, if any, to which the group is linked. The Z score for a bond length (or angle) is the number of standard deviations the observed value is removed from the expected value. A bond length (or angle) with $|Z| > 2$ is considered an outlier worth inspection. RMSZ is the root-mean-square of all Z scores of the bond lengths (or angles).

Mol	Type	Chain	Res	Link	Bond lengths			Bond angles		
					Counts	RMSZ	$\# Z > 2$	Counts	RMSZ	$\# Z > 2$
3	GNP	E	1299	2	29,34,34	1.74	7 (24%)	33,54,54	2.44	9 (27%)

Mol	Type	Chain	Res	Link	Bond lengths			Bond angles		
					Counts	RMSZ	# Z > 2	Counts	RMSZ	# Z > 2
3	GNP	C	1295	2	29,34,34	1.77	5 (17%)	33,54,54	2.34	9 (27%)
3	GNP	F	1293	2	29,34,34	1.80	7 (24%)	33,54,54	2.38	8 (24%)
3	GNP	A	1297	2	29,34,34	1.78	7 (24%)	33,54,54	2.41	9 (27%)
3	GNP	B	1295	2	29,34,34	1.72	5 (17%)	33,54,54	2.38	9 (27%)
3	GNP	D	1301	2	29,34,34	1.78	6 (20%)	33,54,54	2.50	8 (24%)

In the following table, the Chirals column lists the number of chiral outliers, the number of chiral centers analysed, the number of these observed in the model and the number defined in the Chemical Component Dictionary. Similar counts are reported in the Torsion and Rings columns. '-' means no outliers of that kind were identified.

Mol	Type	Chain	Res	Link	Chirals	Torsions	Rings
3	GNP	E	1299	2	-	4/14/38/38	0/3/3/3
3	GNP	C	1295	2	-	9/14/38/38	0/3/3/3
3	GNP	F	1293	2	-	6/14/38/38	0/3/3/3
3	GNP	A	1297	2	-	8/14/38/38	0/3/3/3
3	GNP	B	1295	2	-	7/14/38/38	0/3/3/3
3	GNP	D	1301	2	-	3/14/38/38	0/3/3/3

The worst 5 of 37 bond length outliers are listed below:

Mol	Chain	Res	Type	Atoms	Z	Observed(Å)	Ideal(Å)
3	F	1293	GNP	PB-O3A	-5.58	1.52	1.59
3	A	1297	GNP	PB-O3A	-5.43	1.52	1.59
3	C	1295	GNP	PB-O3A	-5.27	1.52	1.59
3	D	1301	GNP	PB-O3A	-5.23	1.52	1.59
3	E	1299	GNP	PB-O3A	-5.03	1.52	1.59

The worst 5 of 52 bond angle outliers are listed below:

Mol	Chain	Res	Type	Atoms	Z	Observed(°)	Ideal(°)
3	D	1301	GNP	C5-C6-N1	-8.83	111.36	123.43
3	B	1295	GNP	C5-C6-N1	-8.70	111.53	123.43
3	F	1293	GNP	C5-C6-N1	-8.52	111.78	123.43
3	E	1299	GNP	C5-C6-N1	-8.50	111.81	123.43
3	A	1297	GNP	C5-C6-N1	-8.45	111.88	123.43

There are no chirality outliers.

5 of 37 torsion outliers are listed below:

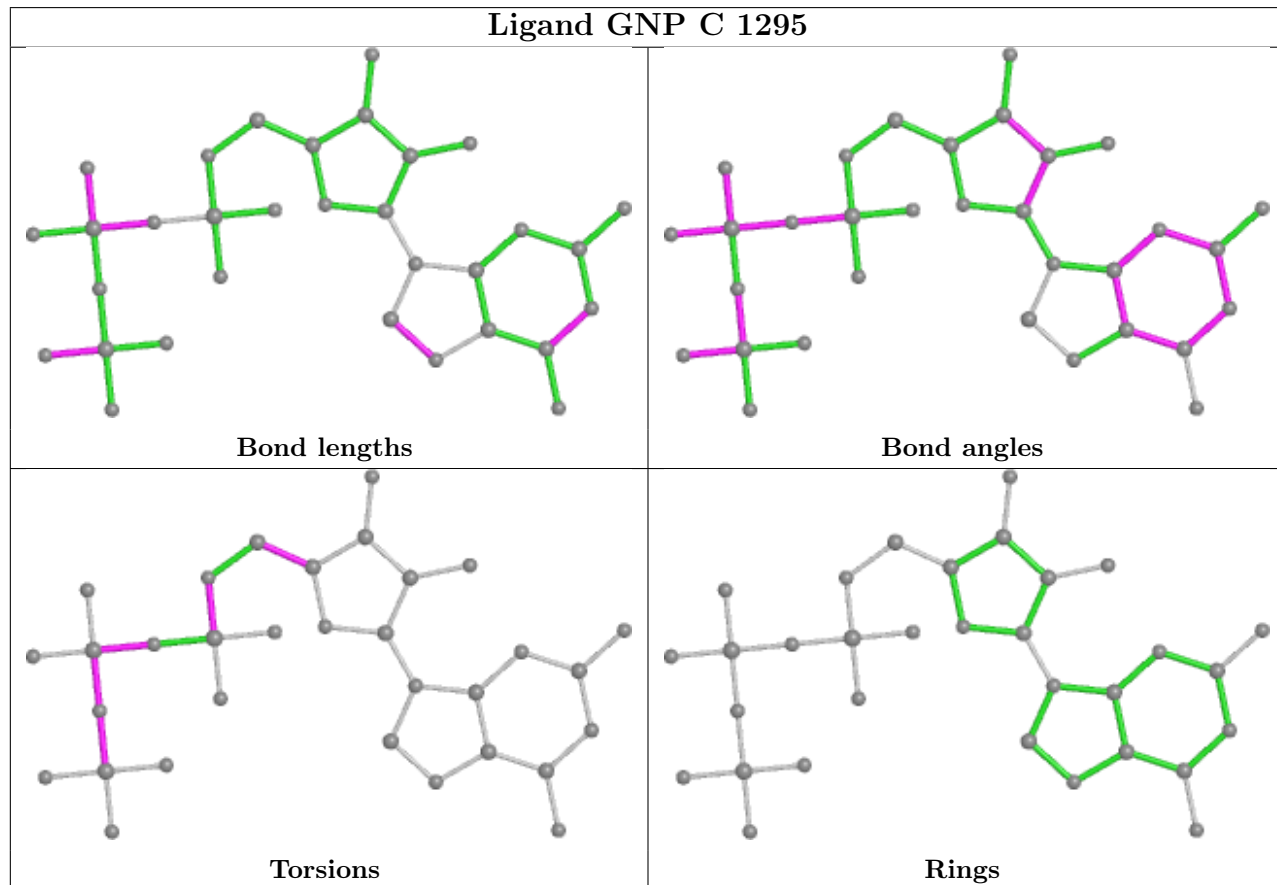
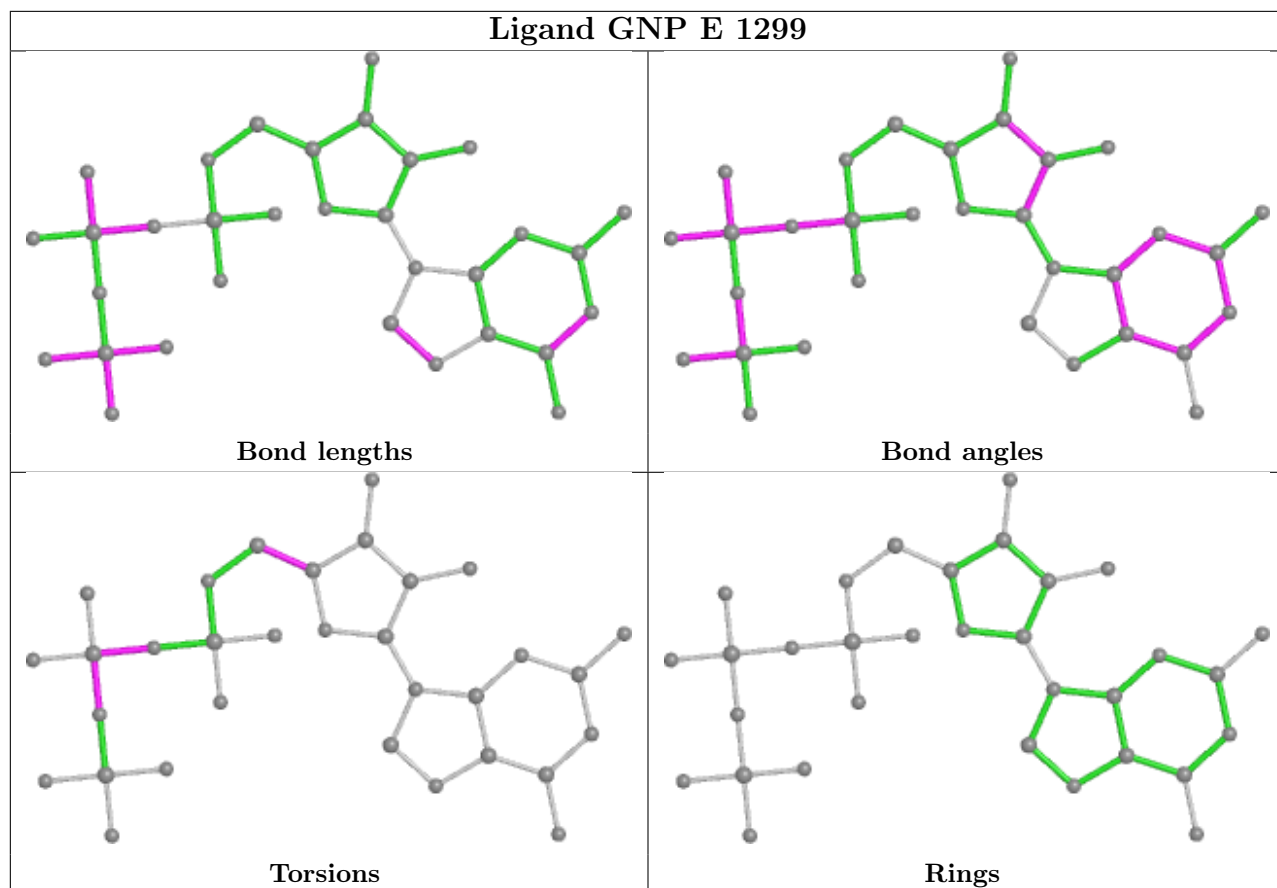
Mol	Chain	Res	Type	Atoms
3	A	1297	GNP	PB-N3B-PG-O1G
3	A	1297	GNP	PG-N3B-PB-O1B
3	A	1297	GNP	PA-O3A-PB-O1B
3	A	1297	GNP	PA-O3A-PB-O2B
3	B	1295	GNP	PB-N3B-PG-O1G

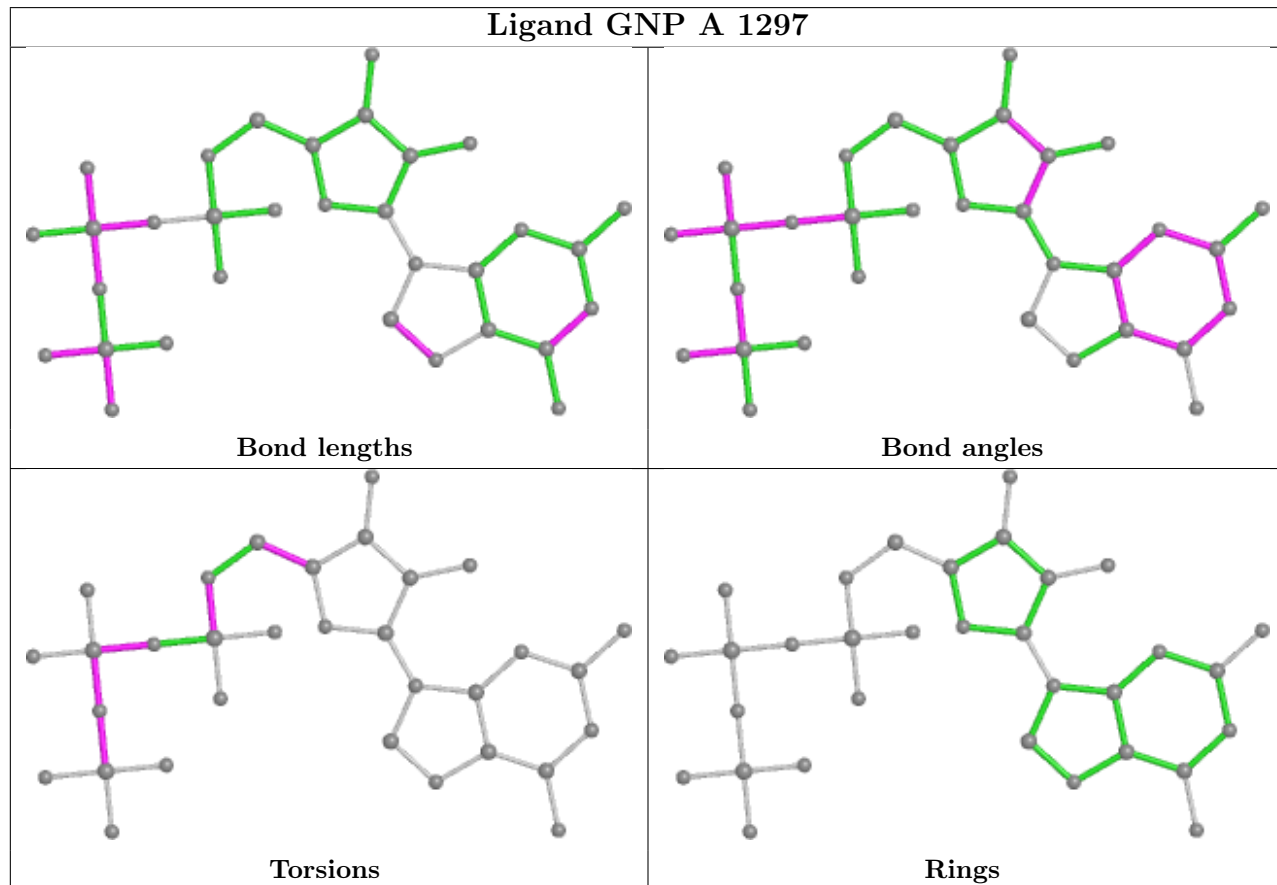
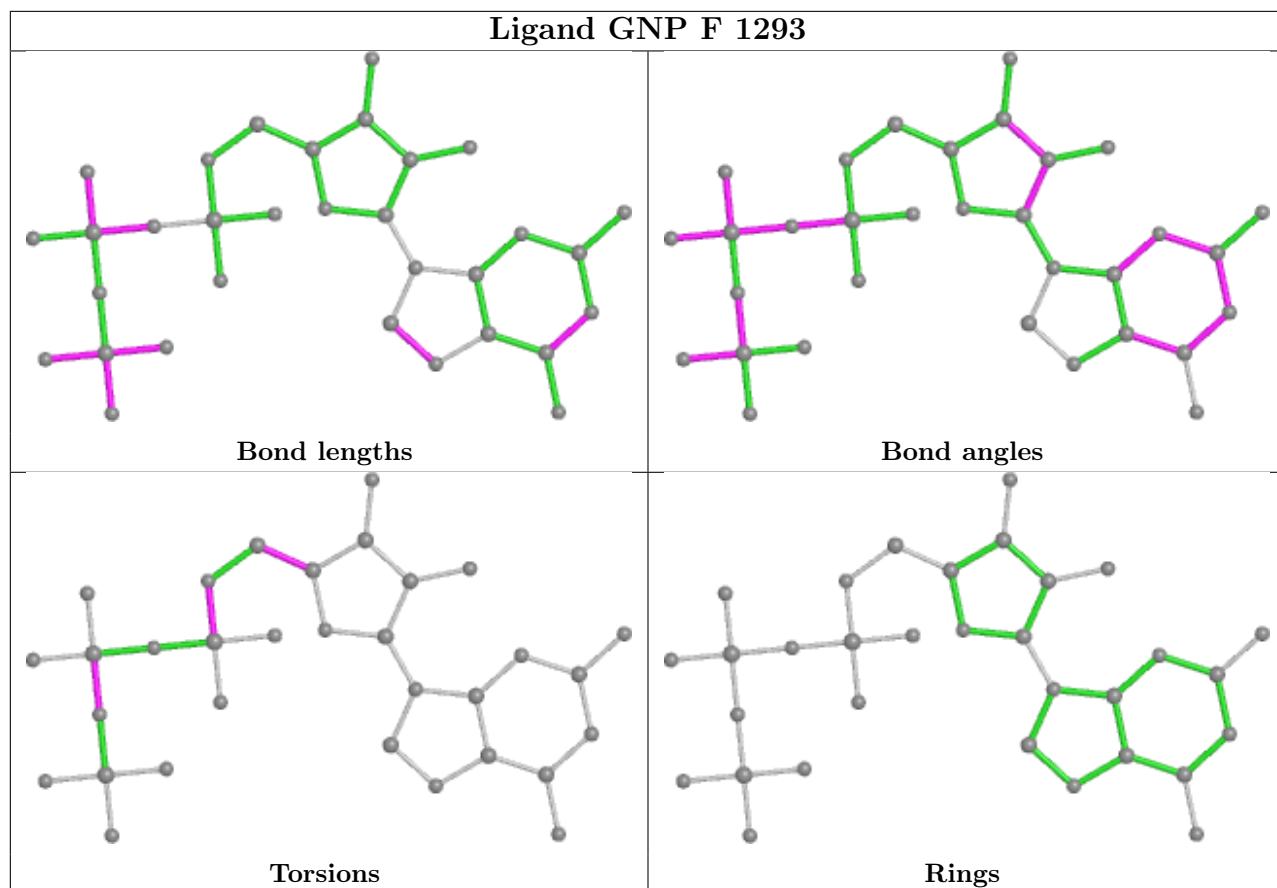
There are no ring outliers.

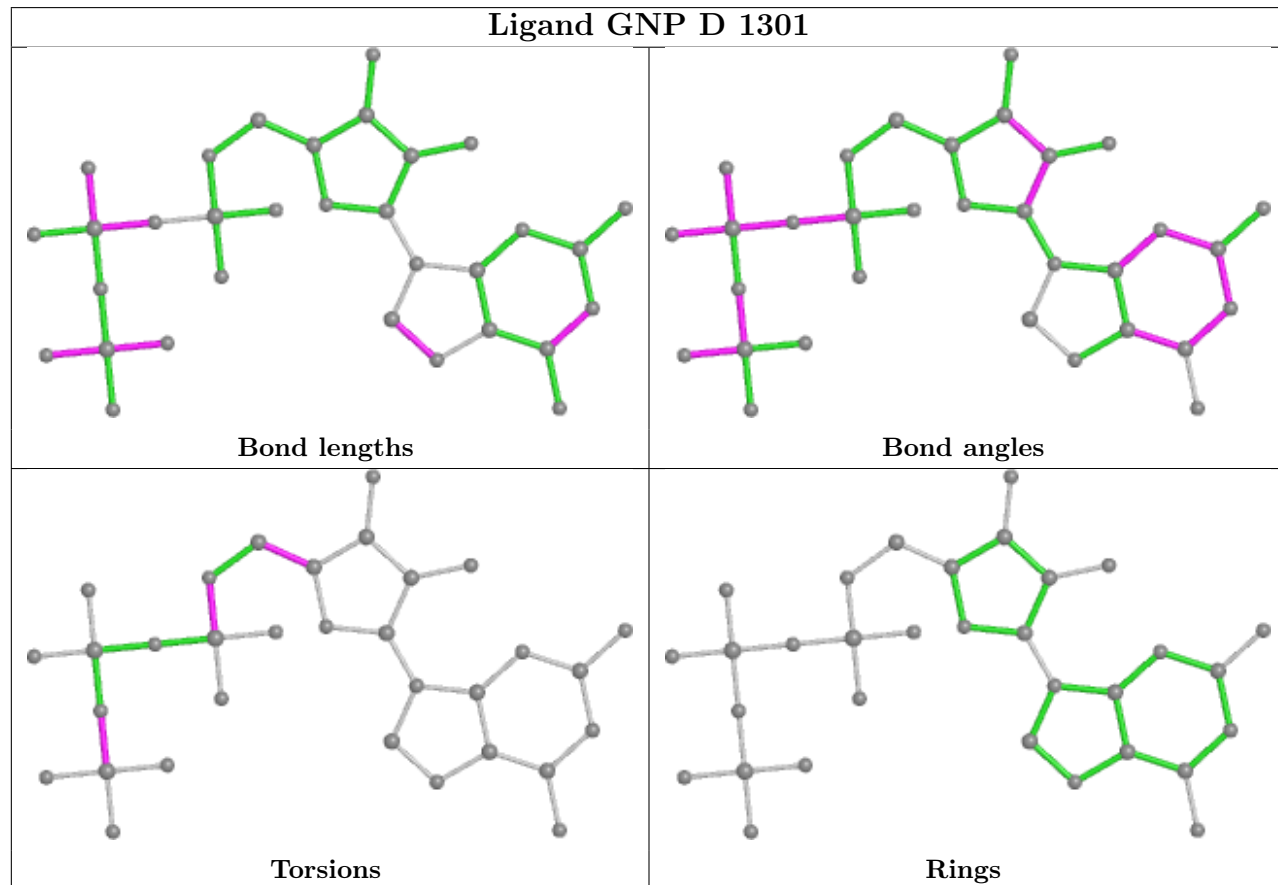
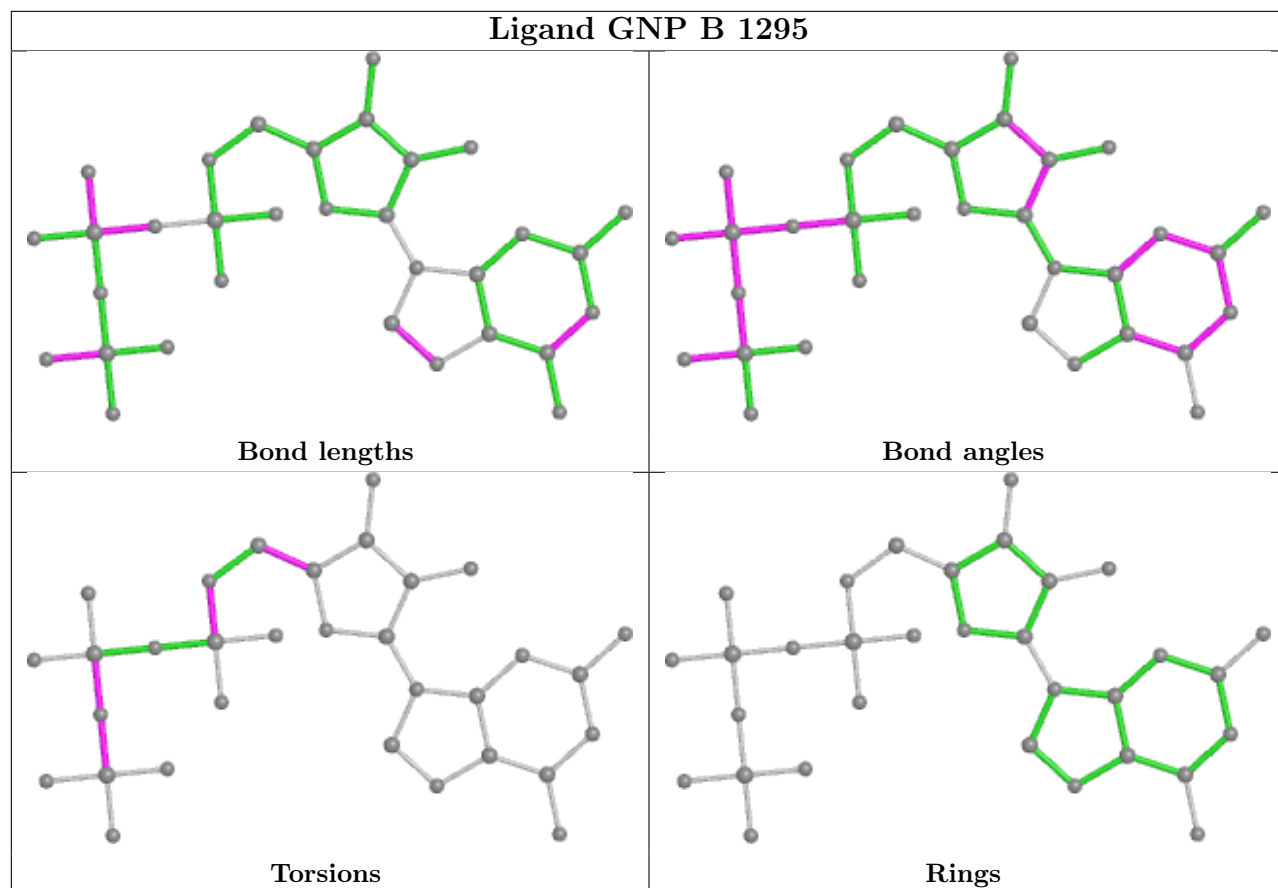
6 monomers are involved in 10 short contacts:

Mol	Chain	Res	Type	Clashes	Symm-Clashes
3	E	1299	GNP	1	0
3	C	1295	GNP	3	0
3	F	1293	GNP	2	0
3	A	1297	GNP	1	0
3	B	1295	GNP	2	0
3	D	1301	GNP	1	0

The following is a two-dimensional graphical depiction of Mogul quality analysis of bond lengths, bond angles, torsion angles, and ring geometry for all instances of the Ligand of Interest. In addition, ligands with molecular weight > 250 and outliers as shown on the validation Tables will also be included. For torsion angles, if less than 5% of the Mogul distribution of torsion angles is within 10 degrees of the torsion angle in question, then that torsion angle is considered an outlier. Any bond that is central to one or more torsion angles identified as an outlier by Mogul will be highlighted in the graph. For rings, the root-mean-square deviation (RMSD) between the ring in question and similar rings identified by Mogul is calculated over all ring torsion angles. If the average RMSD is greater than 60 degrees and the minimal RMSD between the ring in question and any Mogul-identified rings is also greater than 60 degrees, then that ring is considered an outlier. The outliers are highlighted in purple. The color gray indicates Mogul did not find sufficient equivalents in the CSD to analyse the geometry.







5.7 Other polymers [i](#)

There are no such residues in this entry.

5.8 Polymer linkage issues [i](#)

There are no chain breaks in this entry.

6 Fit of model and data [i](#)

6.1 Protein, DNA and RNA chains [i](#)

In the following table, the column labelled ‘#RSRZ> 2’ contains the number (and percentage) of RSRZ outliers, followed by percent RSRZ outliers for the chain as percentile scores relative to all X-ray entries and entries of similar resolution. The OWAB column contains the minimum, median, 95th percentile and maximum values of the occupancy-weighted average B-factor per residue. The column labelled ‘Q< 0.9’ lists the number of (and percentage) of residues with an average occupancy less than 0.9.

Mol	Chain	Analysed	<RSRZ>	#RSRZ>2	OWAB(Å ²)	Q<0.9
1	A	283/305 (92%)	-0.34	0 100 100	27, 66, 105, 126	60 (21%)
1	B	257/305 (84%)	-0.43	2 (0%) 86 78	27, 53, 96, 170	34 (13%)
1	C	254/305 (83%)	-0.37	1 (0%) 92 89	25, 56, 99, 130	40 (15%)
1	D	223/305 (73%)	-0.09	6 (2%) 54 38	29, 79, 120, 152	45 (20%)
1	E	286/305 (93%)	-0.26	4 (1%) 75 63	38, 70, 106, 137	69 (24%)
1	F	252/305 (82%)	0.01	6 (2%) 59 43	46, 89, 131, 157	60 (23%)
All	All	1555/1830 (84%)	-0.25	19 (1%) 79 68	25, 69, 114, 170	308 (19%)

The worst 5 of 19 RSRZ outliers are listed below:

Mol	Chain	Res	Type	RSRZ
1	F	60	LEU	2.8
1	B	224	TYR	2.8
1	F	89	CYS	2.7
1	F	11	ILE	2.5
1	F	209	THR	2.4

6.2 Non-standard residues in protein, DNA, RNA chains [i](#)

There are no non-standard protein/DNA/RNA residues in this entry.

6.3 Carbohydrates [i](#)

There are no monosaccharides in this entry.

6.4 Ligands

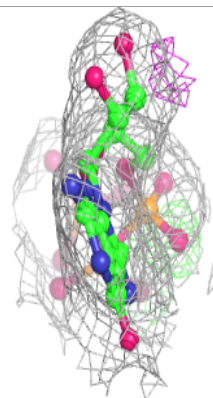
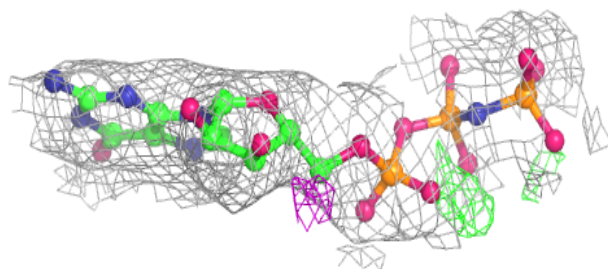
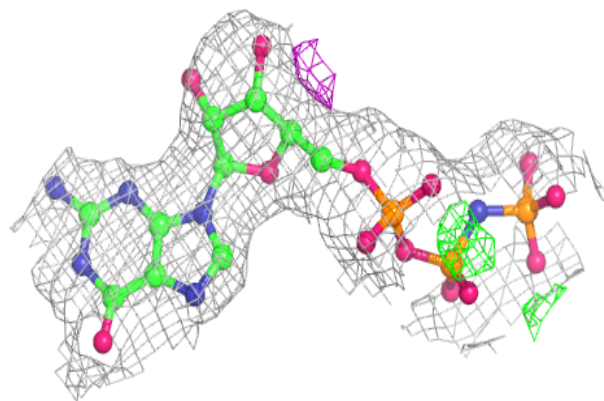
In the following table, the Atoms column lists the number of modelled atoms in the group and the number defined in the chemical component dictionary. The B-factors column lists the minimum, median, 95th percentile and maximum values of B factors of atoms in the group. The column labelled 'Q< 0.9' lists the number of atoms with occupancy less than 0.9.

Mol	Type	Chain	Res	Atoms	RSCC	RSR	B-factors(\AA^2)	Q<0.9
2	MG	B	1294	1/1	0.79	0.23	37,37,37,37	0
2	MG	A	1296	1/1	0.84	0.69	279,279,279,279	0
2	MG	C	1294	1/1	0.84	0.70	215,215,215,215	0
2	MG	F	1292	1/1	0.93	0.22	79,79,79,79	0
3	GNP	F	1293	32/32	0.93	0.18	43,64,97,104	0
2	MG	D	1300	1/1	0.94	0.13	34,34,34,34	0
3	GNP	C	1295	32/32	0.96	0.17	6,52,68,82	0
3	GNP	D	1301	32/32	0.96	0.17	28,74,97,173	0
3	GNP	E	1299	32/32	0.96	0.14	39,66,82,164	0
3	GNP	B	1295	32/32	0.96	0.18	17,54,68,88	0
3	GNP	A	1297	32/32	0.97	0.16	6,56,82,86	0
2	MG	E	1298	1/1	0.98	0.06	42,42,42,42	0

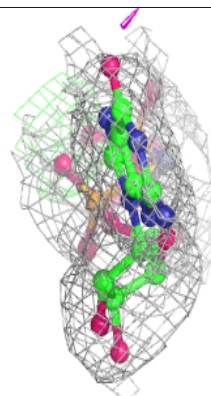
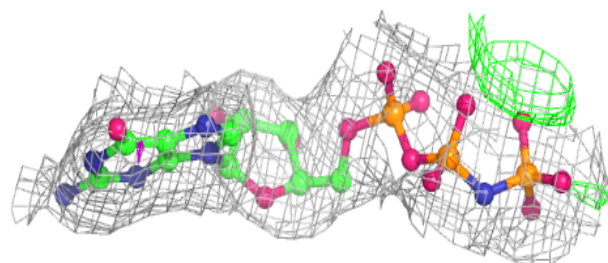
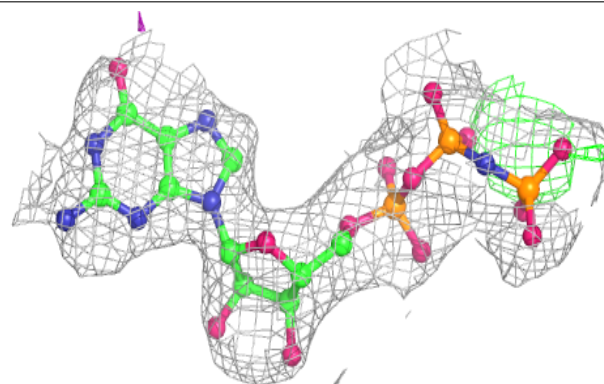
The following is a graphical depiction of the model fit to experimental electron density of all instances of the Ligand of Interest. In addition, ligands with molecular weight > 250 and outliers as shown on the geometry validation Tables will also be included. Each fit is shown from different orientation to approximate a three-dimensional view.

Electron density around GNP F 1293:

$2mF_o-DF_c$ (at 0.7 rmsd) in gray
 mF_o-DF_c (at 3 rmsd) in purple (negative)
and green (positive)

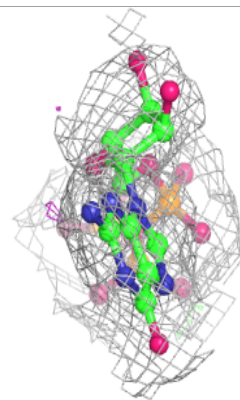
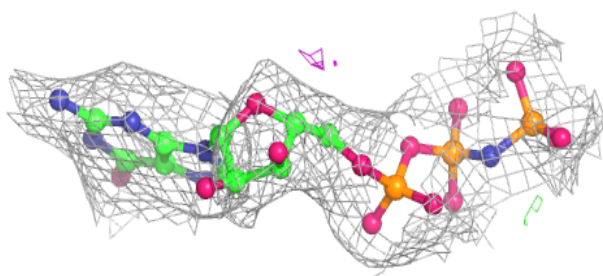
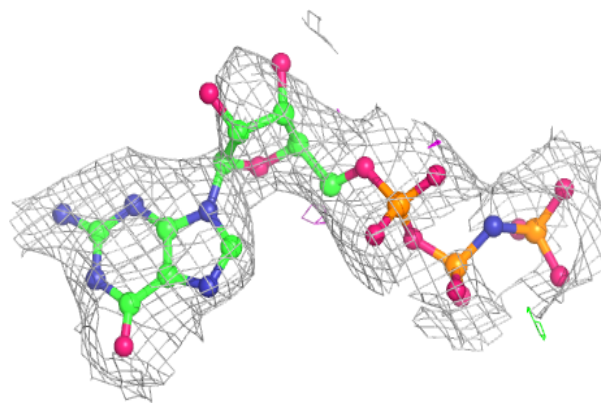
**Electron density around GNP C 1295:**

$2mF_o-DF_c$ (at 0.7 rmsd) in gray
 mF_o-DF_c (at 3 rmsd) in purple (negative)
and green (positive)

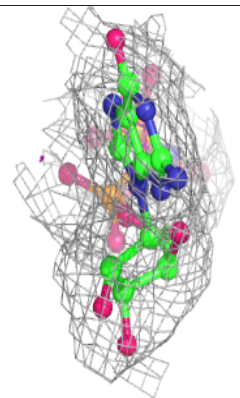
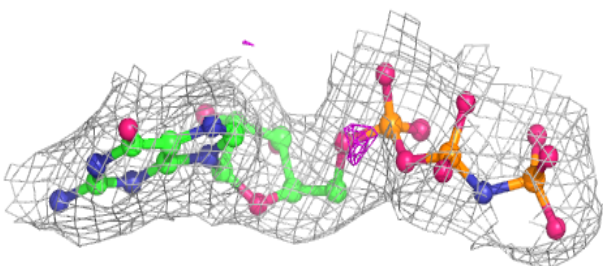
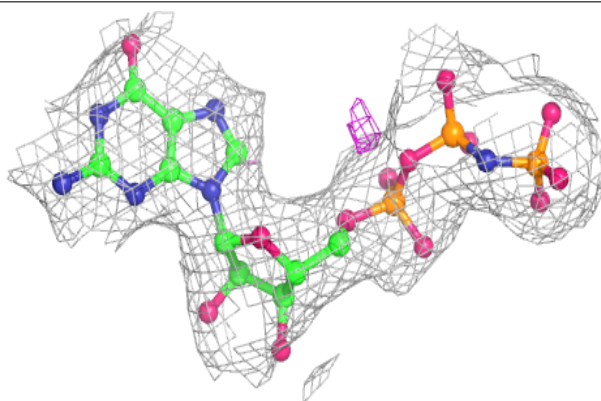


Electron density around GNP D 1301:

$2mF_o-DF_c$ (at 0.7 rmsd) in gray
 mF_o-DF_c (at 3 rmsd) in purple (negative)
and green (positive)

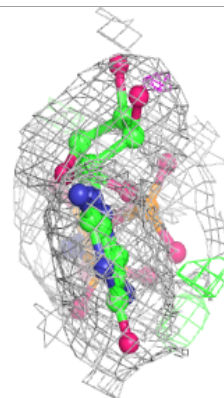
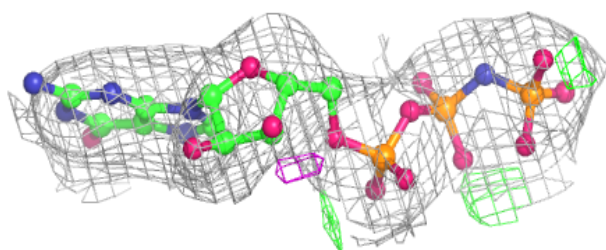
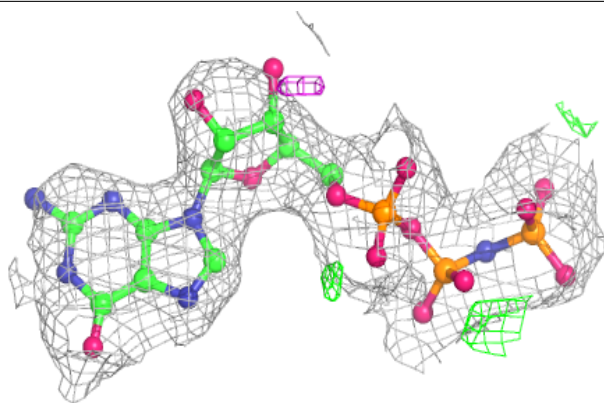
**Electron density around GNP E 1299:**

$2mF_o-DF_c$ (at 0.7 rmsd) in gray
 mF_o-DF_c (at 3 rmsd) in purple (negative)
and green (positive)

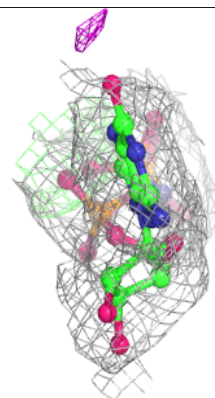
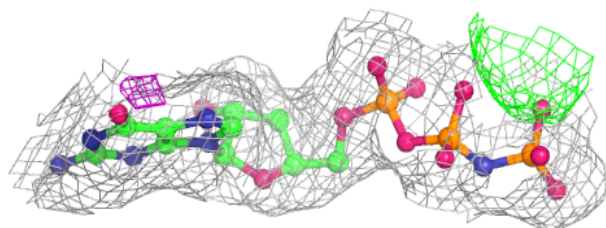
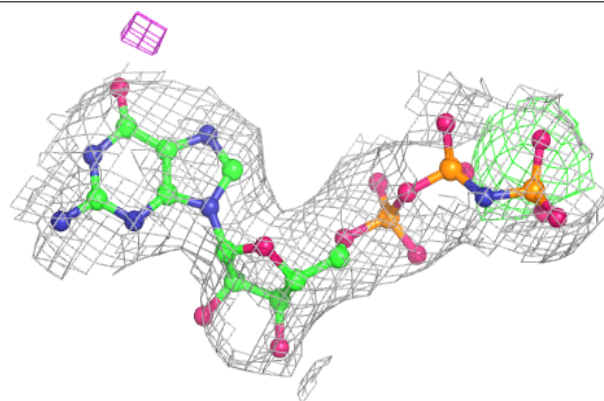


Electron density around GNP B 1295:

$2mF_o-DF_c$ (at 0.7 rmsd) in gray
 mF_o-DF_c (at 3 rmsd) in purple (negative)
and green (positive)

**Electron density around GNP A 1297:**

$2mF_o-DF_c$ (at 0.7 rmsd) in gray
 mF_o-DF_c (at 3 rmsd) in purple (negative)
and green (positive)



6.5 Other polymers [i](#)

There are no such residues in this entry.