



Full wwPDB X-ray Structure Validation Report ⓘ

Jun 15, 2020 – 11:19 pm BST

PDB ID : 3WVG
Title : Crystal structure of an inward-facing eukaryotic ABC multidrug transporter G277V/A278V/A279V mutant in complex with an cyclic peptide inhibitor, aCAP
Authors : Kodan, A.; Yamaguchi, T.; Nakatsu, T.; Sakiyama, K.; Hipolito, C.J.; Fujioka, A.; Hirokane, R.; Ikeguchi, K.; Watanabe, B.; Hirtake, J.; Kimura, Y.; Suga, H.; Ueda, K.; Kato, H.
Deposited on : 2013-11-18
Resolution : 2.40 Å(reported)

This is a Full wwPDB X-ray Structure Validation Report for a publicly released PDB entry.

We welcome your comments at validation@mail.wwpdb.org

A user guide is available at

<https://www.wwpdb.org/validation/2017/XrayValidationReportHelp>

with specific help available everywhere you see the ⓘ symbol.

The following versions of software and data (see [references ⓘ](#)) were used in the production of this report:

MolProbity : 4.02b-467
Mogul : 1.8.5 (274361), CSD as541be (2020)
Xtriage (Phenix) : 1.13
EDS : 2.11
buster-report : 1.1.7 (2018)
Percentile statistics : 20191225.v01 (using entries in the PDB archive December 25th 2019)
Refmac : 5.8.0158
CCP4 : 7.0.044 (Gargrove)
Ideal geometry (proteins) : Engh & Huber (2001)
Ideal geometry (DNA, RNA) : Parkinson et al. (1996)
Validation Pipeline (wwPDB-VP) : 2.11

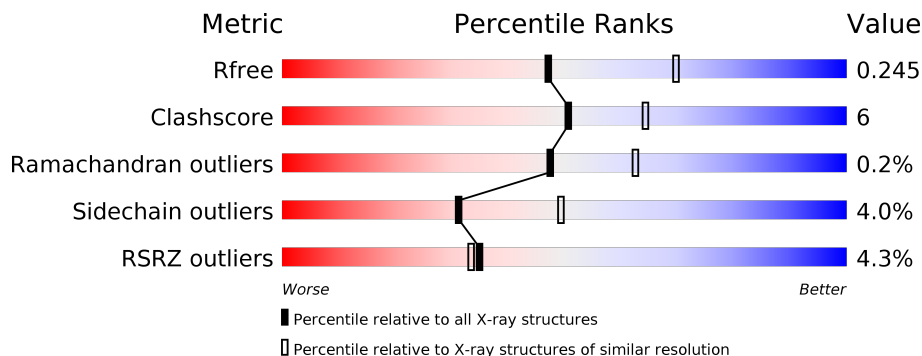
1 Overall quality at a glance i

The following experimental techniques were used to determine the structure:

X-RAY DIFFRACTION

The reported resolution of this entry is 2.40 Å.

Percentile scores (ranging between 0-100) for global validation metrics of the entry are shown in the following graphic. The table shows the number of entries on which the scores are based.



Metric	Whole archive (#Entries)	Similar resolution (#Entries, resolution range(Å))
R_{free}	130704	3907 (2.40-2.40)
Clashscore	141614	4398 (2.40-2.40)
Ramachandran outliers	138981	4318 (2.40-2.40)
Sidechain outliers	138945	4319 (2.40-2.40)
RSRZ outliers	127900	3811 (2.40-2.40)

The table below summarises the geometric issues observed across the polymeric chains and their fit to the electron density. The red, orange, yellow and green segments on the lower bar indicate the fraction of residues that contain outliers for ≥ 3 , 2, 1 and 0 types of geometric quality criteria respectively. A grey segment represents the fraction of residues that are not modelled. The numeric value for each fraction is indicated below the corresponding segment, with a dot representing fractions $\leq 5\%$. The upper red bar (where present) indicates the fraction of residues that have poor fit to the electron density. The numeric value is given above the bar.

Mol	Chain	Length	Quality of chain
1	A	621	
2	B	19	

2 Entry composition

There are 5 unique types of molecules in this entry. The entry contains 4747 atoms, of which 0 are hydrogens and 0 are deuteriums.

In the tables below, the ZeroOcc column contains the number of atoms modelled with zero occupancy, the AltConf column contains the number of residues with at least one atom in alternate conformation and the Trace column contains the number of residues modelled with at most 2 atoms.

- Molecule 1 is a protein called ATP-binding cassette, sub-family B, member 1.

Mol	Chain	Residues	Atoms					ZeroOcc	AltConf	Trace
			Total	C	N	O	S			
1	A	589	4401	2830	750	805	16	0	1	0

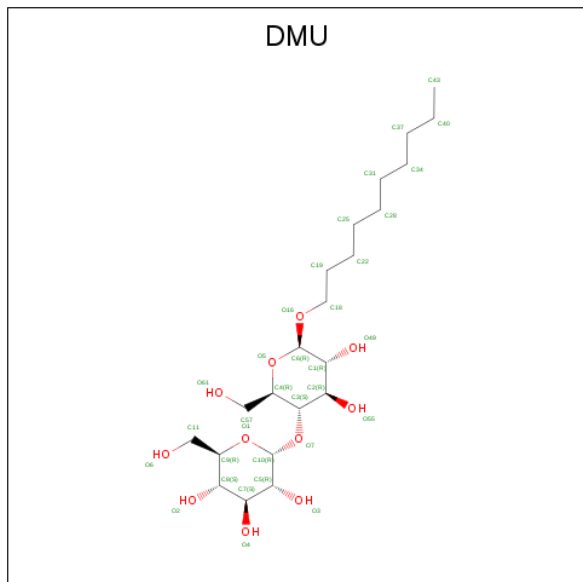
There are 20 discrepancies between the modelled and reference sequences:

Chain	Residue	Modelled	Actual	Comment	Reference
A	277	VAL	GLY	ENGINEERED MUTATION	UNP M1VAN7
A	278	VAL	ALA	ENGINEERED MUTATION	UNP M1VAN7
A	279	VAL	ALA	ENGINEERED MUTATION	UNP M1VAN7
A	697	SER	-	EXPRESSION TAG	UNP M1VAN7
A	698	GLY	-	EXPRESSION TAG	UNP M1VAN7
A	699	ARG	-	EXPRESSION TAG	UNP M1VAN7
A	700	ASP	-	EXPRESSION TAG	UNP M1VAN7
A	701	TYR	-	EXPRESSION TAG	UNP M1VAN7
A	702	LYS	-	EXPRESSION TAG	UNP M1VAN7
A	703	ASP	-	EXPRESSION TAG	UNP M1VAN7
A	704	ASP	-	EXPRESSION TAG	UNP M1VAN7
A	705	ASP	-	EXPRESSION TAG	UNP M1VAN7
A	706	ASP	-	EXPRESSION TAG	UNP M1VAN7
A	707	LYS	-	EXPRESSION TAG	UNP M1VAN7
A	708	HIS	-	EXPRESSION TAG	UNP M1VAN7
A	709	HIS	-	EXPRESSION TAG	UNP M1VAN7
A	710	HIS	-	EXPRESSION TAG	UNP M1VAN7
A	711	HIS	-	EXPRESSION TAG	UNP M1VAN7
A	712	HIS	-	EXPRESSION TAG	UNP M1VAN7
A	713	HIS	-	EXPRESSION TAG	UNP M1VAN7

- Molecule 2 is a protein called anti-CmABCB1 peptide.

Mol	Chain	Residues	Atoms					ZeroOcc	AltConf	Trace
			Total	C	N	O	S			
2	B	18	146	98	23	24	1	0	0	0

- Molecule 3 is DECYL-BETA-D-MALTOPYRANOSIDE (three-letter code: DMU) (formula: $C_{22}H_{42}O_{11}$).



Mol	Chain	Residues	Atoms	ZeroOcc	AltConf
3	A	1	Total C O 26 15 11	0	0
3	A	1	Total C 8 8	0	0
3	A	1	Total C 6 6	0	0
3	A	1	Total C O 23 13 10	0	0
3	B	1	Total C O 28 17 11	0	0

- Molecule 4 is 2-AMINO-2-HYDROXYMETHYL-PROPANE-1,3-DIOL (three-letter code: TRS) (formula: $C_4H_{12}NO_3$).



Mol	Chain	Residues	Atoms				ZeroOcc	AltConf
			Total	C	N	O		
4	A	1	8	4	1	3	0	0

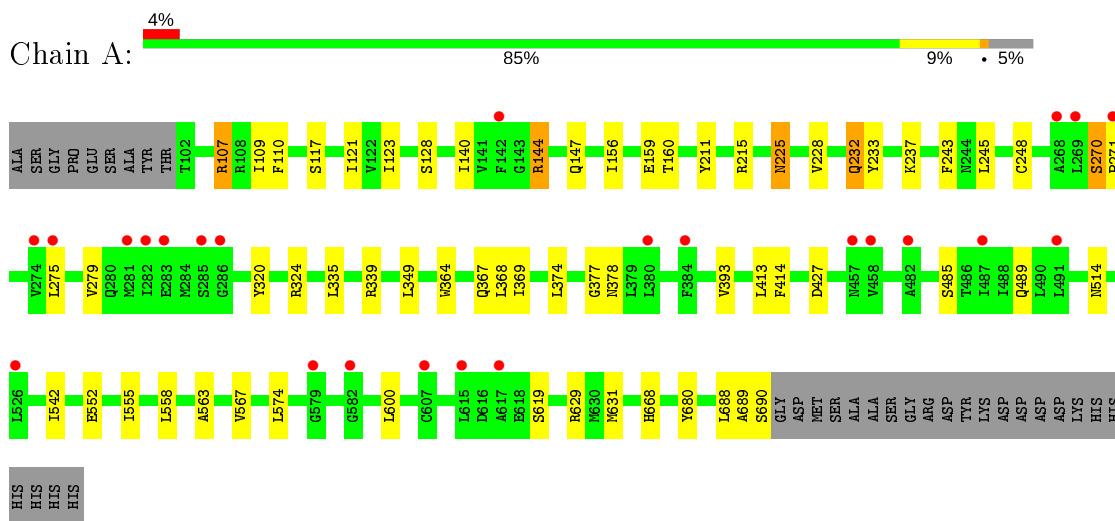
- Molecule 5 is water.

Mol	Chain	Residues	Atoms		ZeroOcc	AltConf
			Total	O		
5	A	101	101	101	0	0

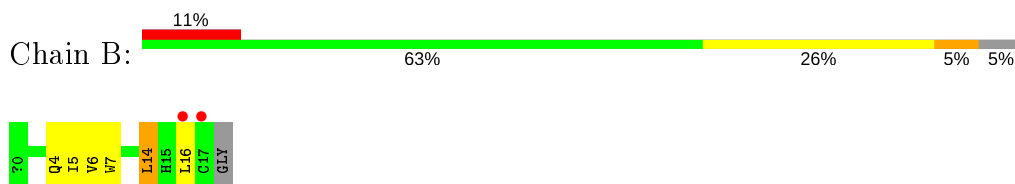
3 Residue-property plots [i](#)

These plots are drawn for all protein, RNA and DNA chains in the entry. The first graphic for a chain summarises the proportions of the various outlier classes displayed in the second graphic. The second graphic shows the sequence view annotated by issues in geometry and electron density. Residues are color-coded according to the number of geometric quality criteria for which they contain at least one outlier: green = 0, yellow = 1, orange = 2 and red = 3 or more. A red dot above a residue indicates a poor fit to the electron density ($RSRZ > 2$). Stretches of 2 or more consecutive residues without any outlier are shown as a green connector. Residues present in the sample, but not in the model, are shown in grey.

- Molecule 1: ATP-binding cassette, sub-family B, member 1



- Molecule 2: anti-CmABCB1 peptide



4 Data and refinement statistics

Property	Value	Source
Space group	H 3 2	Depositor
Cell constants a, b, c, α , β , γ	180.49Å 180.49Å 153.16Å 90.00° 90.00° 120.00°	Depositor
Resolution (Å)	36.47 – 2.40 30.63 – 2.40	Depositor EDS
% Data completeness (in resolution range)	98.5 (36.47-2.40) 98.6 (30.63-2.40)	Depositor EDS
R_{merge}	0.09	Depositor
R_{sym}	(Not available)	Depositor
$\langle I/\sigma(I) \rangle$ ¹	4.38 (at 2.39Å)	Xtrriage
Refinement program	REFMAC	Depositor
R, R_{free}	0.219 , 0.246 0.218 , 0.245	Depositor DCC
R_{free} test set	1839 reflections (4.98%)	wwPDB-VP
Wilson B-factor (Å ²)	57.2	Xtrriage
Anisotropy	0.036	Xtrriage
Bulk solvent k_{sol} (e/Å ³), B_{sol} (Å ²)	0.33 , 47.6	EDS
L-test for twinning ²	$\langle L \rangle = 0.49$, $\langle L^2 \rangle = 0.32$	Xtrriage
Estimated twinning fraction	No twinning to report.	Xtrriage
F_o, F_c correlation	0.94	EDS
Total number of atoms	4747	wwPDB-VP
Average B, all atoms (Å ²)	62.0	wwPDB-VP

Xtrriage's analysis on translational NCS is as follows: *The largest off-origin peak in the Patterson function is 3.15% of the height of the origin peak. No significant pseudotranslation is detected.*

¹Intensities estimated from amplitudes.

²Theoretical values of $\langle |L| \rangle$, $\langle L^2 \rangle$ for acentric reflections are 0.5, 0.333 respectively for untwinned datasets, and 0.375, 0.2 for perfectly twinned datasets.

5 Model quality [i](#)

5.1 Standard geometry [i](#)

Bond lengths and bond angles in the following residue types are not validated in this section: DTR, TRS, DMU, ACE

The Z score for a bond length (or angle) is the number of standard deviations the observed value is removed from the expected value. A bond length (or angle) with $|Z| > 5$ is considered an outlier worth inspection. RMSZ is the root-mean-square of all Z scores of the bond lengths (or angles).

Mol	Chain	Bond lengths		Bond angles	
		RMSZ	# Z >5	RMSZ	# Z >5
1	A	0.42	1/4487 (0.0%)	0.54	0/6089
2	B	0.72	0/133	0.50	0/182
All	All	0.44	1/4620 (0.0%)	0.54	0/6271

All (1) bond length outliers are listed below:

Mol	Chain	Res	Type	Atoms	Z	Observed(Å)	Ideal(Å)
1	A	364	TRP	CD2-CE2	5.72	1.48	1.41

There are no bond angle outliers.

There are no chirality outliers.

There are no planarity outliers.

5.2 Too-close contacts [i](#)

In the following table, the Non-H and H(model) columns list the number of non-hydrogen atoms and hydrogen atoms in the chain respectively. The H(added) column lists the number of hydrogen atoms added and optimized by MolProbity. The Clashes column lists the number of clashes within the asymmetric unit, whereas Symm-Clashes lists symmetry related clashes.

Mol	Chain	Non-H	H(model)	H(added)	Clashes	Symm-Clashes
1	A	4401	0	4353	41	0
2	B	146	0	132	6	0
3	A	63	0	67	3	0
3	B	28	0	29	6	0
4	A	8	0	12	1	0
5	A	101	0	0	0	0
All	All	4747	0	4593	53	0

The all-atom clashscore is defined as the number of clashes found per 1000 atoms (including hydrogen atoms). The all-atom clashscore for this structure is 6.

All (53) close contacts within the same asymmetric unit are listed below, sorted by their clash magnitude.

Atom-1	Atom-2	Interatomic distance (Å)	Clash overlap (Å)
1:A:144:ARG:HH11	1:A:144:ARG:HG2	1.13	1.07
1:A:228:VAL:HG22	1:A:413:LEU:HD11	1.52	0.91
1:A:144:ARG:NH1	1:A:144:ARG:HG2	1.83	0.90
3:B:101:DMU:H6	3:B:101:DMU:O49	1.74	0.87
1:A:228:VAL:CG2	1:A:413:LEU:HD11	2.15	0.76
2:B:7:TRP:HA	2:B:14:LEU:HD22	1.66	0.76
1:A:144:ARG:HH11	1:A:144:ARG:CG	1.97	0.72
1:A:689:ALA:O	1:A:690:SER:CB	2.40	0.69
1:A:107:ARG:HH21	1:A:110:PHE:HD2	1.40	0.69
1:A:320:TYR:CE2	1:A:324:ARG:HD2	2.31	0.66
1:A:427:ASP:H	1:A:514:ASN:HD21	1.47	0.62
1:A:563:ALA:O	1:A:567:VAL:HG12	1.98	0.62
1:A:147:GLN:HE21	1:A:377:GLY:H	1.48	0.61
3:B:101:DMU:C2	3:B:101:DMU:O1	2.50	0.60
3:B:101:DMU:O49	3:B:101:DMU:C18	2.50	0.59
1:A:147:GLN:NE2	1:A:377:GLY:H	2.01	0.59
1:A:668:HIS:HD2	1:A:680:TYR:OH	1.87	0.58
3:B:101:DMU:O55	3:B:101:DMU:C9	2.52	0.58
1:A:689:ALA:O	1:A:690:SER:HB2	2.04	0.57
3:B:101:DMU:H2	3:B:101:DMU:O1	2.04	0.57
1:A:144:ARG:NH2	1:A:378:ASN:OD1	2.35	0.57
1:A:631:MET:O	4:A:805:TRS:H32	2.04	0.56
1:A:320:TYR:CZ	1:A:324:ARG:HD2	2.39	0.56
1:A:225:ASN:HD22	1:A:225:ASN:C	2.09	0.56
1:A:369:ILE:HA	1:A:374:LEU:O	2.08	0.52
1:A:228:VAL:HG22	1:A:413:LEU:CD1	2.32	0.49
1:A:542:ILE:HG22	1:A:600:LEU:HD22	1.94	0.49
1:A:156:ILE:O	1:A:160:THR:HG23	2.13	0.49
1:A:232:GLN:HG3	1:A:233:TYR:N	2.28	0.49
1:A:270:SER:N	1:A:271:PRO:CD	2.76	0.49
1:A:144:ARG:HD2	2:B:7:TRP:O	2.13	0.48
1:A:144:ARG:NH1	1:A:144:ARG:CG	2.62	0.48
2:B:7:TRP:CA	2:B:14:LEU:HD22	2.42	0.48
1:A:225:ASN:ND2	1:A:225:ASN:C	2.67	0.47
1:A:117:SER:O	1:A:121:ILE:HD12	2.15	0.46
1:A:485:SER:O	1:A:489:GLN:HG2	2.14	0.46
2:B:4:GLN:O	2:B:7:TRP:CD1	2.68	0.46

Continued on next page...

Continued from previous page...

Atom-1	Atom-2	Interatomic distance (Å)	Clash overlap (Å)
1:A:689:ALA:O	1:A:690:SER:OG	2.32	0.46
3:A:801:DMU:C9	3:A:801:DMU:H31	2.30	0.45
3:B:101:DMU:O55	3:B:101:DMU:H35	2.16	0.45
1:A:211:TYR:O	1:A:215:ARG:HG2	2.18	0.44
1:A:552:GLU:O	1:A:555:ILE:HG13	2.18	0.43
1:A:140:ILE:O	1:A:144:ARG:NH1	2.52	0.43
1:A:123:ILE:HD12	3:A:803:DMU:H12	2.00	0.42
1:A:248:CYS:SG	1:A:393:VAL:HG22	2.60	0.42
1:A:237:LYS:HA	1:A:237:LYS:HD2	1.92	0.42
2:B:5:ILE:HG13	2:B:6:VAL:HG23	2.01	0.42
1:A:144:ARG:HD3	2:B:7:TRP:CD2	2.55	0.42
1:A:275:LEU:O	1:A:279:VAL:HG22	2.19	0.41
1:A:413:LEU:HD23	1:A:413:LEU:HA	1.91	0.41
1:A:558:LEU:HD11	1:A:574:LEU:HD21	2.03	0.41
3:A:804:DMU:H30	3:A:804:DMU:O6	2.21	0.41
1:A:109:ILE:HG13	1:A:414:PHE:HE2	1.85	0.40

There are no symmetry-related clashes.

5.3 Torsion angles [i](#)

5.3.1 Protein backbone [i](#)

In the following table, the Percentiles column shows the percent Ramachandran outliers of the chain as a percentile score with respect to all X-ray entries followed by that with respect to entries of similar resolution.

The Analysed column shows the number of residues for which the backbone conformation was analysed, and the total number of residues.

Mol	Chain	Analysed	Favoured	Allowed	Outliers	Percentiles
1	A	588/621 (95%)	573 (97%)	14 (2%)	1 (0%)	47 62
2	B	15/19 (79%)	12 (80%)	3 (20%)	0	100 100
All	All	603/640 (94%)	585 (97%)	17 (3%)	1 (0%)	47 62

All (1) Ramachandran outliers are listed below:

Mol	Chain	Res	Type
1	A	270	SER

5.3.2 Protein sidechains [i](#)

In the following table, the Percentiles column shows the percent sidechain outliers of the chain as a percentile score with respect to all X-ray entries followed by that with respect to entries of similar resolution.

The Analysed column shows the number of residues for which the sidechain conformation was analysed, and the total number of residues.

Mol	Chain	Analysed	Rotameric	Outliers	Percentiles	
1	A	435/494 (88%)	419 (96%)	16 (4%)	34	53
2	B	14/14 (100%)	12 (86%)	2 (14%)	3	4
All	All	449/508 (88%)	431 (96%)	18 (4%)	31	49

All (18) residues with a non-rotameric sidechain are listed below:

Mol	Chain	Res	Type
1	A	107	ARG
1	A	128	SER
1	A	144	ARG
1	A	159	GLU
1	A	225	ASN
1	A	232	GLN
1	A	243	PHE
1	A	245	LEU
1	A	335	LEU
1	A	339	ARG
1	A	349	LEU
1	A	367	GLN
1	A	368	LEU
1	A	619	SER
1	A	629	ARG
1	A	688	LEU
2	B	14	LEU
2	B	16	LEU

Some sidechains can be flipped to improve hydrogen bonding and reduce clashes. All (8) such sidechains are listed below:

Mol	Chain	Res	Type
1	A	147	GLN
1	A	155	GLN
1	A	225	ASN
1	A	422	GLN

Continued on next page...

Continued from previous page...

Mol	Chain	Res	Type
1	A	470	ASN
1	A	514	ASN
1	A	591	GLN
1	A	668	HIS

5.3.3 RNA [i](#)

There are no RNA molecules in this entry.

5.4 Non-standard residues in protein, DNA, RNA chains [i](#)

1 non-standard protein/DNA/RNA residue is modelled in this entry.

There are no bond length outliers.

There are no bond angle outliers.

There are no chirality outliers.

There are no torsion outliers.

There are no ring outliers.

No monomer is involved in short contacts.

5.5 Carbohydrates [i](#)

There are no carbohydrates in this entry.

5.6 Ligand geometry [i](#)

6 ligands are modelled in this entry.

In the following table, the Counts columns list the number of bonds (or angles) for which Mogul statistics could be retrieved, the number of bonds (or angles) that are observed in the model and the number of bonds (or angles) that are defined in the Chemical Component Dictionary. The Link column lists molecule types, if any, to which the group is linked. The Z score for a bond length (or angle) is the number of standard deviations the observed value is removed from the expected value. A bond length (or angle) with $|Z| > 2$ is considered an outlier worth inspection. RMSZ is the root-mean-square of all Z scores of the bond lengths (or angles).

Mol	Type	Chain	Res	Link	Bond lengths			Bond angles		
					Counts	RMSZ	# Z > 2	Counts	RMSZ	# Z > 2
3	DMU	A	801	-	27,27,34	0.52	0	37,38,45	0.72	1 (2%)

Mol	Type	Chain	Res	Link	Bond lengths			Bond angles		
					Counts	RMSZ	# Z > 2	Counts	RMSZ	# Z > 2
3	DMU	B	101	-	29,29,34	0.54	1 (3%)	40,40,45	0.85	0
3	DMU	A	802	-	7,7,34	0.28	0	6,6,45	0.39	0
3	DMU	A	804	-	23,24,34	0.66	0	30,34,45	1.38	4 (13%)
3	DMU	A	803	-	5,5,34	0.30	0	4,4,45	0.35	0
4	TRS	A	805	-	7,7,7	0.32	0	9,9,9	0.55	0

In the following table, the Chirals column lists the number of chiral outliers, the number of chiral centers analysed, the number of these observed in the model and the number defined in the Chemical Component Dictionary. Similar counts are reported in the Torsion and Rings columns. '-' means no outliers of that kind were identified.

Mol	Type	Chain	Res	Link	Chirals	Torsions	Rings
3	DMU	A	801	-	-	5/12/52/59	0/2/2/2
3	DMU	B	101	-	-	8/14/54/59	0/2/2/2
3	DMU	A	802	-	-	5/5/5/59	-
3	DMU	A	804	-	-	2/10/46/59	0/2/2/2
3	DMU	A	803	-	-	2/3/3/59	-
4	TRS	A	805	-	-	9/9/9/9	-

All (1) bond length outliers are listed below:

Mol	Chain	Res	Type	Atoms	Z	Observed(Å)	Ideal(Å)
3	B	101	DMU	O16-C6	2.08	1.43	1.40

All (5) bond angle outliers are listed below:

Mol	Chain	Res	Type	Atoms	Z	Observed(°)	Ideal(°)
3	A	804	DMU	C2-C3-C4	4.36	116.75	110.85
3	A	801	DMU	C10-O7-C3	-3.18	110.09	117.96
3	A	804	DMU	O5-C4-C3	2.67	113.82	109.90
3	A	804	DMU	C1-C2-C3	2.35	116.66	111.21
3	A	804	DMU	C8-C7-C5	2.20	114.67	110.82

There are no chirality outliers.

All (31) torsion outliers are listed below:

Mol	Chain	Res	Type	Atoms
3	B	101	DMU	C1-C6-O16-C18
3	B	101	DMU	O5-C6-O16-C18

Continued on next page...

Continued from previous page...

Mol	Chain	Res	Type	Atoms
3	A	804	DMU	O5-C4-C57-O61
3	A	801	DMU	C3-C4-C57-O61
3	A	801	DMU	O6-C11-C9-O1
3	A	804	DMU	C3-C4-C57-O61
3	B	101	DMU	C2-C3-O7-C10
3	A	801	DMU	O5-C4-C57-O61
3	A	801	DMU	O6-C11-C9-C8
3	B	101	DMU	O6-C11-C9-O1
3	A	803	DMU	C25-C28-C31-C34
3	A	801	DMU	O16-C18-C19-C22
3	A	802	DMU	C25-C28-C31-C34
3	A	802	DMU	C28-C31-C34-C37
3	B	101	DMU	O16-C18-C19-C22
4	A	805	TRS	C3-C-C1-O1
3	B	101	DMU	C4-C3-O7-C10
3	A	802	DMU	C31-C34-C37-C40
3	A	802	DMU	C34-C37-C40-C43
3	A	803	DMU	C22-C25-C28-C31
4	A	805	TRS	N-C-C1-O1
4	A	805	TRS	C1-C-C2-O2
4	A	805	TRS	N-C-C2-O2
4	A	805	TRS	C1-C-C3-O3
4	A	805	TRS	C2-C-C3-O3
3	A	802	DMU	C22-C25-C28-C31
3	B	101	DMU	O6-C11-C9-C8
3	B	101	DMU	O1-C10-O7-C3
4	A	805	TRS	C2-C-C1-O1
4	A	805	TRS	C3-C-C2-O2
4	A	805	TRS	N-C-C3-O3

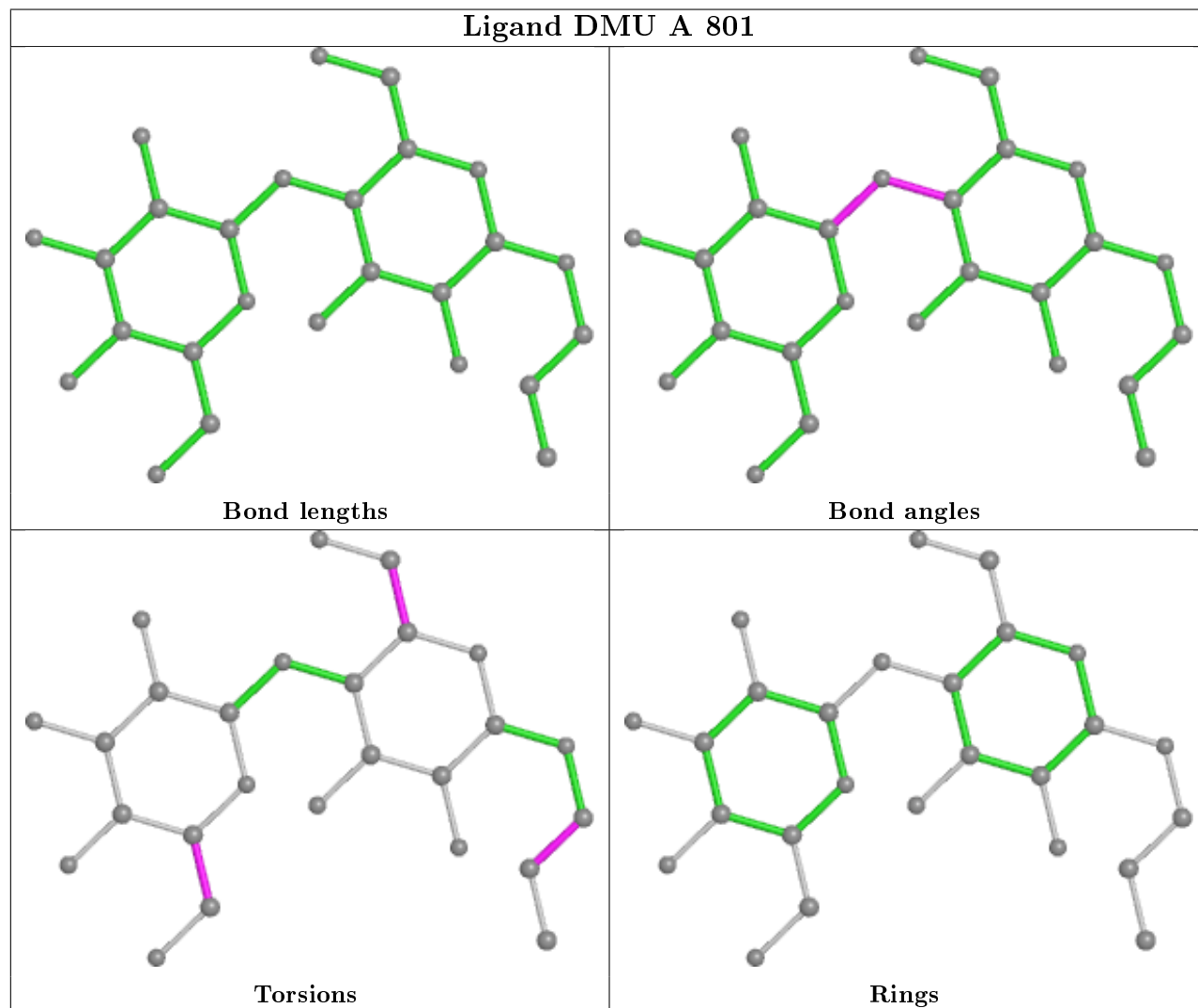
There are no ring outliers.

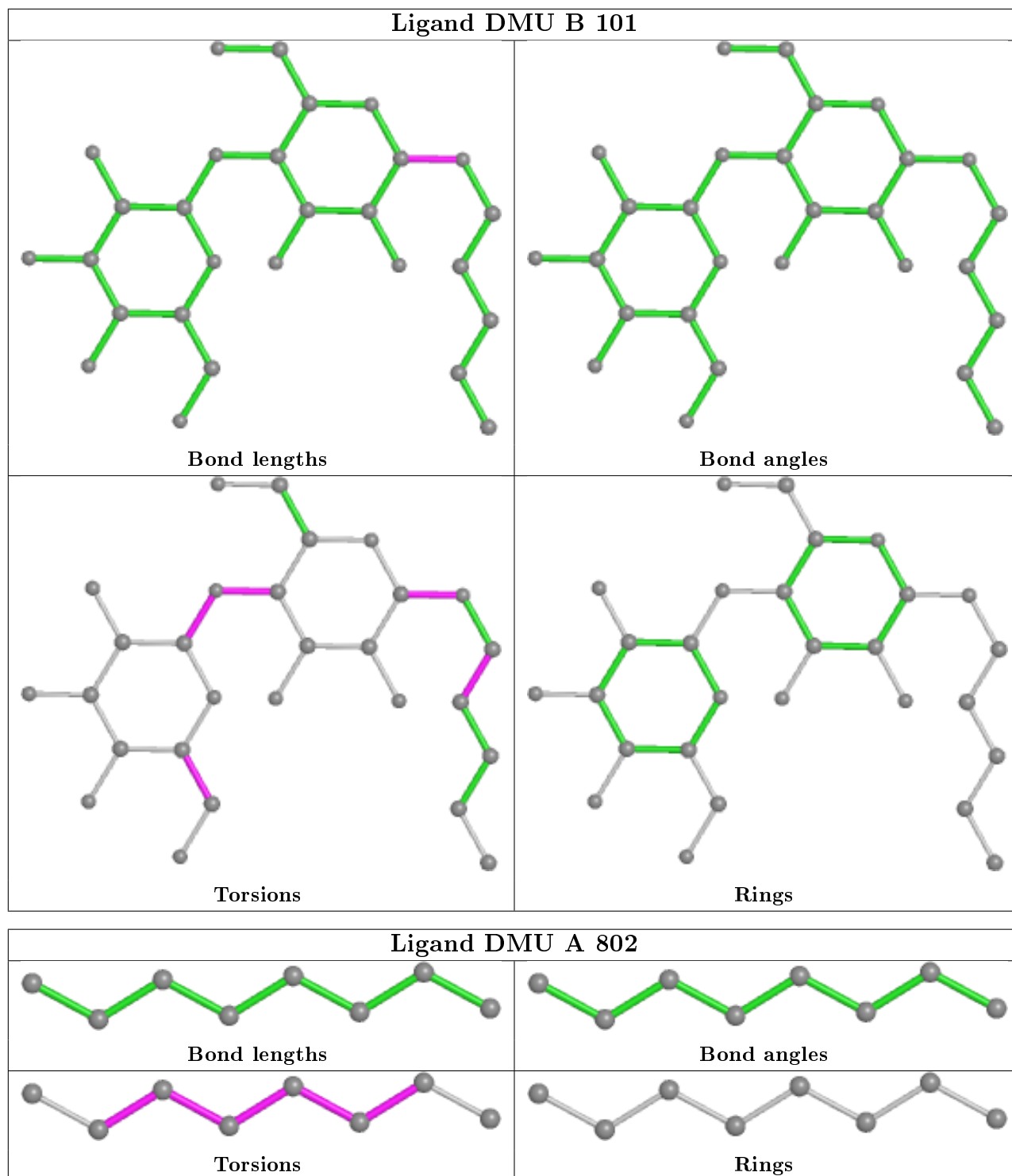
5 monomers are involved in 10 short contacts:

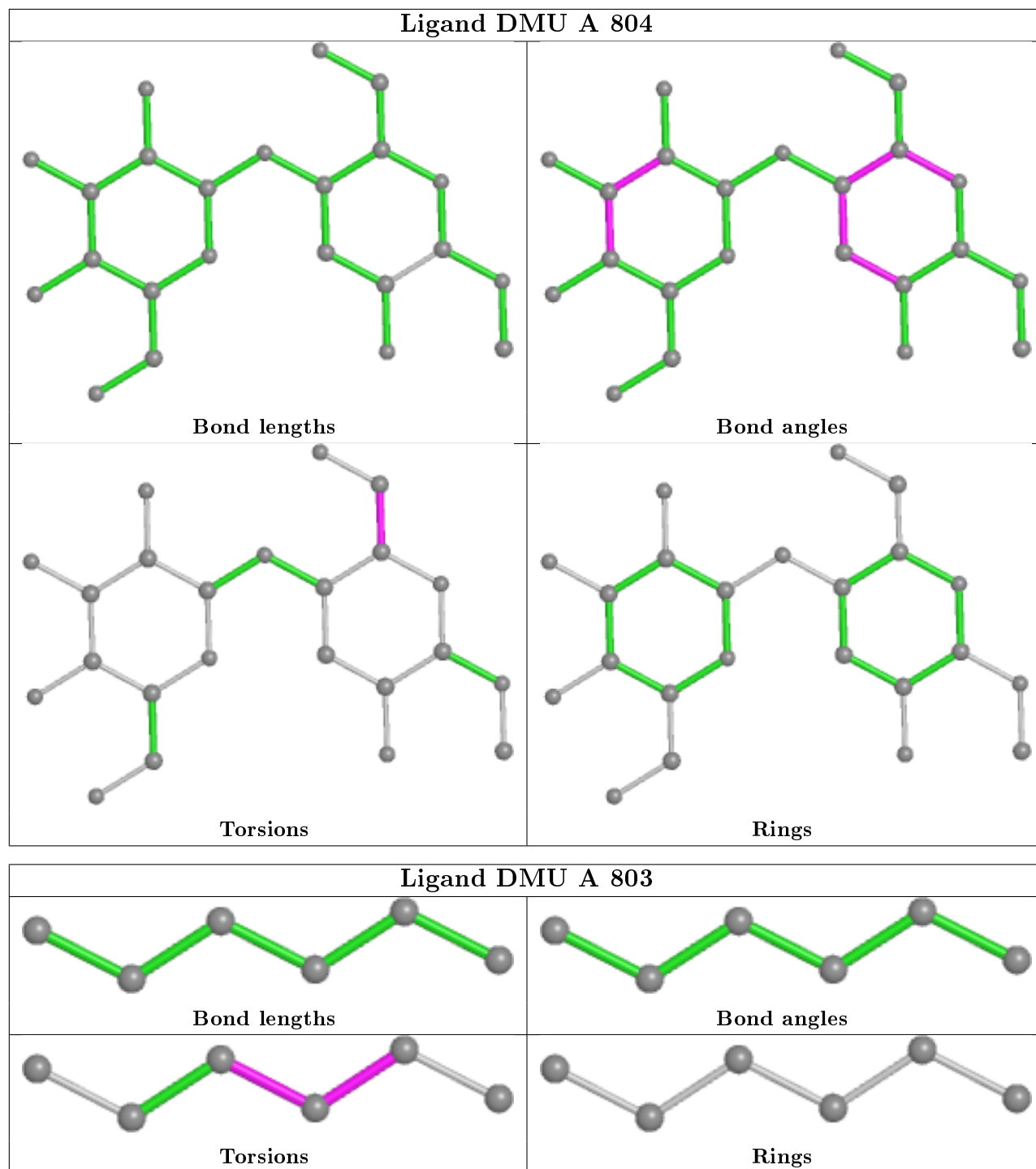
Mol	Chain	Res	Type	Clashes	Symm-Clashes
3	A	801	DMU	1	0
3	B	101	DMU	6	0
3	A	804	DMU	1	0
3	A	803	DMU	1	0
4	A	805	TRS	1	0

The following is a two-dimensional graphical depiction of Mogul quality analysis of bond lengths, bond angles, torsion angles, and ring geometry for all instances of the Ligand of Interest. In

addition, ligands with molecular weight > 250 and outliers as shown on the validation Tables will also be included. For torsion angles, if less than 5% of the Mogul distribution of torsion angles is within 10 degrees of the torsion angle in question, then that torsion angle is considered an outlier. Any bond that is central to one or more torsion angles identified as an outlier by Mogul will be highlighted in the graph. For rings, the root-mean-square deviation (RMSD) between the ring in question and similar rings identified by Mogul is calculated over all ring torsion angles. If the average RMSD is greater than 60 degrees and the minimal RMSD between the ring in question and any Mogul-identified rings is also greater than 60 degrees, then that ring is considered an outlier. The outliers are highlighted in purple. The color gray indicates Mogul did not find sufficient equivalents in the CSD to analyse the geometry.







5.7 Other polymers [\(i\)](#)

There are no such residues in this entry.

5.8 Polymer linkage issues [\(i\)](#)

There are no chain breaks in this entry.

6 Fit of model and data

6.1 Protein, DNA and RNA chains

In the following table, the column labelled '#RSRZ > 2' contains the number (and percentage) of RSRZ outliers, followed by percent RSRZ outliers for the chain as percentile scores relative to all X-ray entries and entries of similar resolution. The OWAB column contains the minimum, median, 95th percentile and maximum values of the occupancy-weighted average B-factor per residue. The column labelled 'Q < 0.9' lists the number of (and percentage) of residues with an average occupancy less than 0.9.

Mol	Chain	Analysed	<RSRZ>	#RSRZ>2	OWAB(Å ²)	Q<0.9
1	A	589/621 (94%)	0.05	24 (4%) 37 36	36, 59, 98, 124	0
2	B	16/19 (84%)	0.48	2 (12%) 3 3	60, 76, 96, 110	0
All	All	605/640 (94%)	0.06	26 (4%) 35 33	36, 59, 98, 124	0

All (26) RSRZ outliers are listed below:

Mol	Chain	Res	Type	RSRZ
1	A	282	ILE	6.1
2	B	17	CYS	4.7
1	A	271	PRO	4.0
1	A	281	MET	4.0
1	A	268	ALA	3.8
1	A	380	LEU	3.6
1	A	526	LEU	3.4
1	A	275	LEU	3.4
1	A	285	SER	3.2
1	A	617	ALA	3.2
2	B	16	LEU	3.1
1	A	458	VAL	3.1
1	A	274	VAL	3.1
1	A	615	LEU	3.0
1	A	491	LEU	3.0
1	A	579	GLY	2.8
1	A	457	ASN	2.8
1	A	482	ALA	2.7
1	A	283	GLU	2.7
1	A	607	CYS	2.7
1	A	286	GLY	2.6
1	A	384	PHE	2.4
1	A	142	PHE	2.4
1	A	487	ILE	2.2

Continued on next page...

Continued from previous page...

Mol	Chain	Res	Type	RSRZ
1	A	269	LEU	2.1
1	A	582	GLY	2.0

6.2 Non-standard residues in protein, DNA, RNA chains [i](#)

In the following table, the Atoms column lists the number of modelled atoms in the group and the number defined in the chemical component dictionary. The B-factors column lists the minimum, median, 95th percentile and maximum values of B factors of atoms in the group. The column labelled 'Q< 0.9' lists the number of atoms with occupancy less than 0.9.

Mol	Type	Chain	Res	Atoms	RSCC	RSR	B-factors(Å ²)	Q<0.9
2	DTR	B	1	14/15	0.87	0.41	97,115,117,118	0

6.3 Carbohydrates [i](#)

There are no carbohydrates in this entry.

6.4 Ligands [i](#)

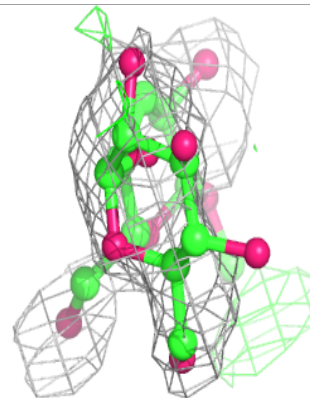
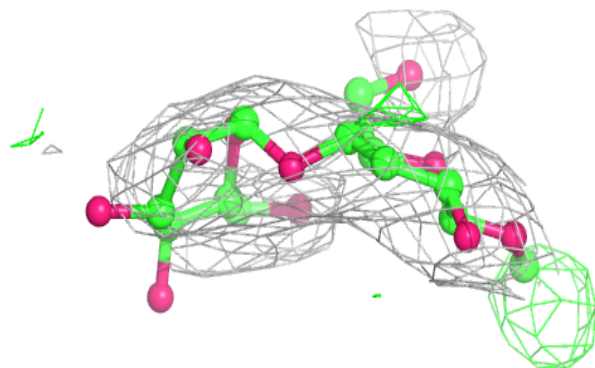
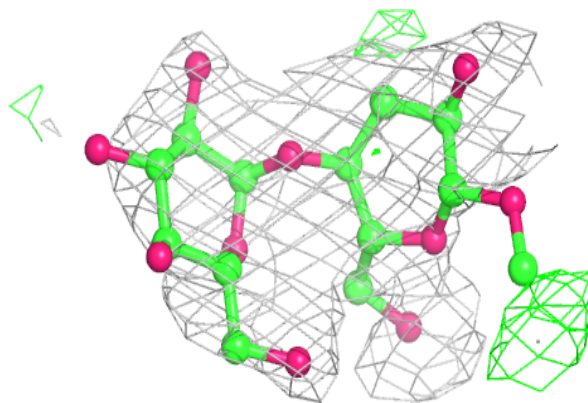
In the following table, the Atoms column lists the number of modelled atoms in the group and the number defined in the chemical component dictionary. The B-factors column lists the minimum, median, 95th percentile and maximum values of B factors of atoms in the group. The column labelled 'Q< 0.9' lists the number of atoms with occupancy less than 0.9.

Mol	Type	Chain	Res	Atoms	RSCC	RSR	B-factors(Å ²)	Q<0.9
3	DMU	A	804	23/33	0.65	0.26	116,123,126,127	0
3	DMU	A	802	8/33	0.78	0.29	81,82,84,84	0
3	DMU	B	101	28/33	0.78	0.35	96,115,119,121	0
3	DMU	A	801	26/33	0.81	0.26	96,108,113,114	0
3	DMU	A	803	6/33	0.82	0.28	72,77,78,80	0
4	TRS	A	805	8/8	0.83	0.14	70,72,72,73	7

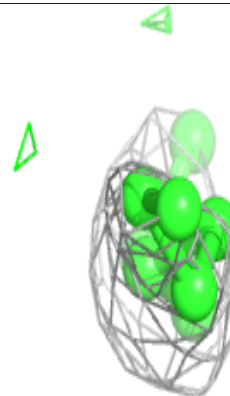
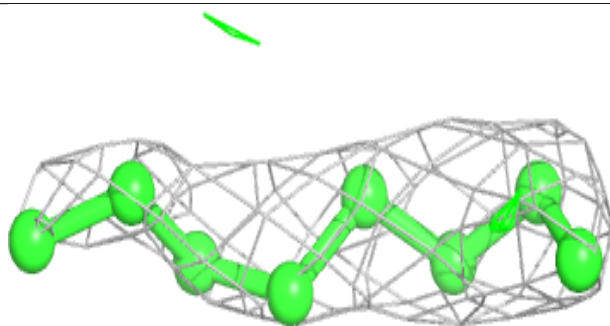
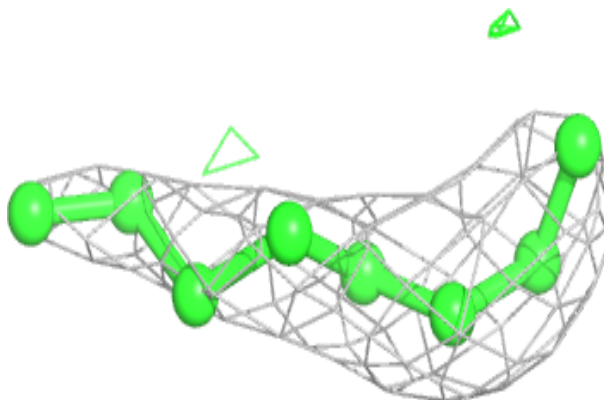
The following is a graphical depiction of the model fit to experimental electron density of all instances of the Ligand of Interest. In addition, ligands with molecular weight > 250 and outliers as shown on the geometry validation Tables will also be included. Each fit is shown from different orientation to approximate a three-dimensional view.

Electron density around DMU A 804:

$2mF_o-DF_c$ (at 0.7 rmsd) in gray
 mF_o-DF_c (at 3 rmsd) in purple (negative)
and green (positive)

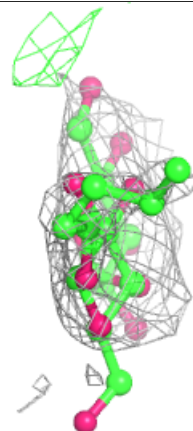
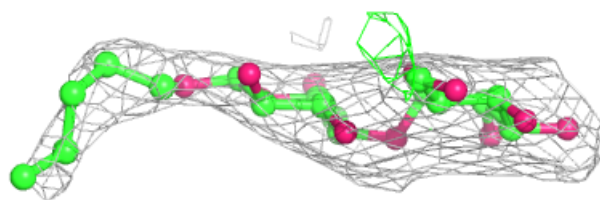
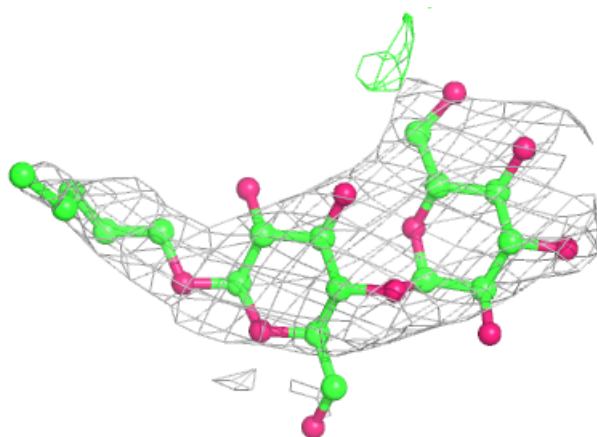
**Electron density around DMU A 802:**

$2mF_o-DF_c$ (at 0.7 rmsd) in gray
 mF_o-DF_c (at 3 rmsd) in purple (negative)
and green (positive)

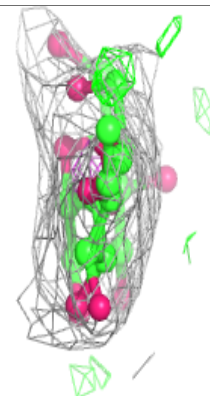
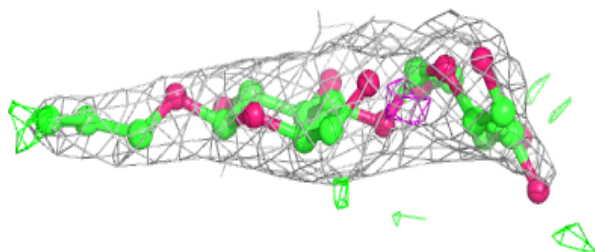
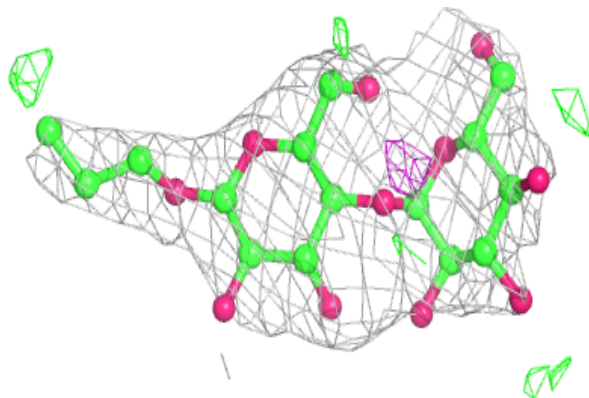


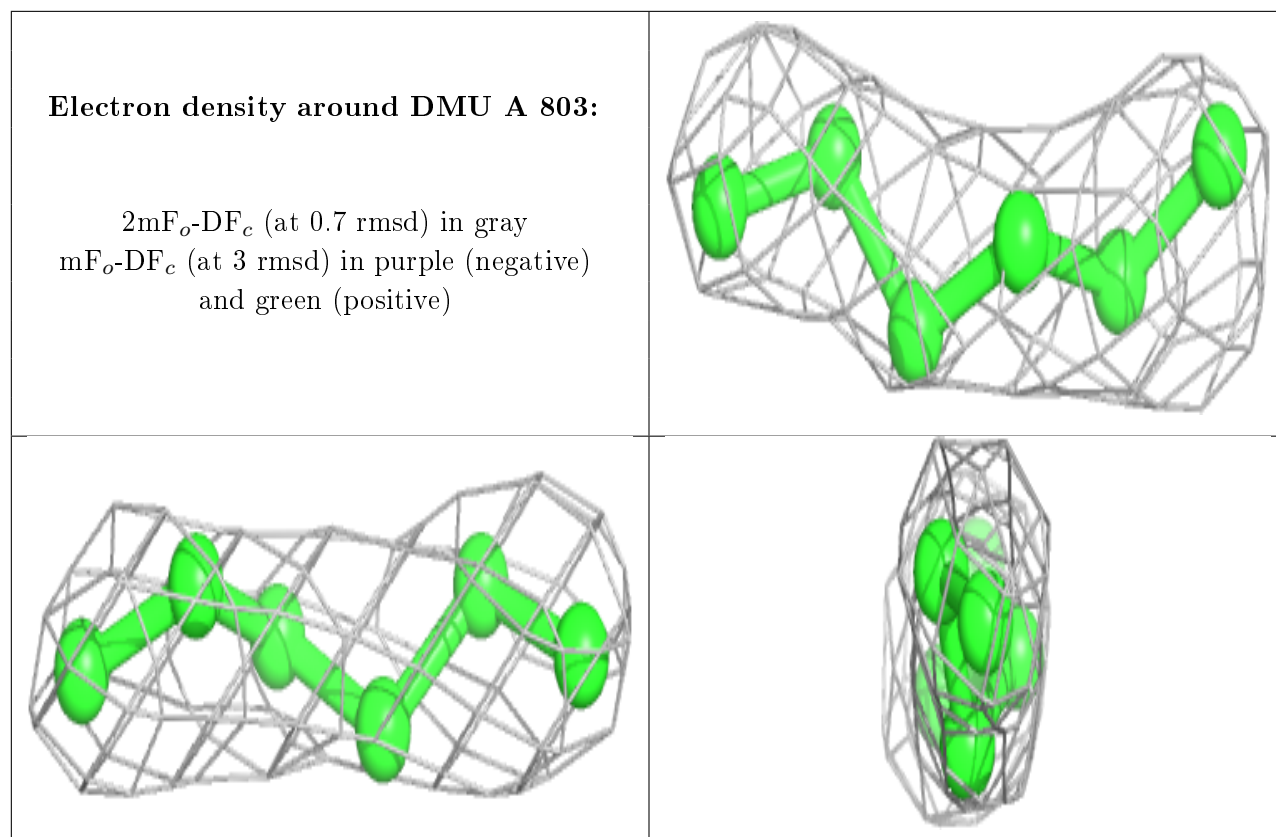
Electron density around DMU B 101:

$2mF_o-DF_c$ (at 0.7 rmsd) in gray
 mF_o-DF_c (at 3 rmsd) in purple (negative)
and green (positive)

**Electron density around DMU A 801:**

$2mF_o-DF_c$ (at 0.7 rmsd) in gray
 mF_o-DF_c (at 3 rmsd) in purple (negative)
and green (positive)





6.5 Other polymers [i](#)

There are no such residues in this entry.