



# Full wwPDB X-ray Structure Validation Report ⓘ

Aug 20, 2020 – 12:40 PM BST

PDB ID : 3WIY  
Title : Crystal structure of Mcl-1 in complex with compound 10  
Authors : Sogabe, S.; Igaki, S.; Hayano, Y.  
Deposited on : 2013-09-26  
Resolution : 2.15 Å(reported)

This is a Full wwPDB X-ray Structure Validation Report for a publicly released PDB entry.

We welcome your comments at [validation@mail.wwpdb.org](mailto:validation@mail.wwpdb.org)

A user guide is available at

<https://www.wwpdb.org/validation/2017/XrayValidationReportHelp>

with specific help available everywhere you see the ⓘ symbol.

---

The following versions of software and data (see [references ⓘ](#)) were used in the production of this report:

MolProbity : 4.02b-467  
Mogul : 1.8.5 (274361), CSD as541be (2020)  
Xtriage (Phenix) : 1.13  
EDS : 2.13.1  
buster-report : 1.1.7 (2018)  
Percentile statistics : 20191225.v01 (using entries in the PDB archive December 25th 2019)  
Refmac : 5.8.0158  
CCP4 : 7.0.044 (Gargrove)  
Ideal geometry (proteins) : Engh & Huber (2001)  
Ideal geometry (DNA, RNA) : Parkinson et al. (1996)  
Validation Pipeline (wwPDB-VP) : 2.13.1

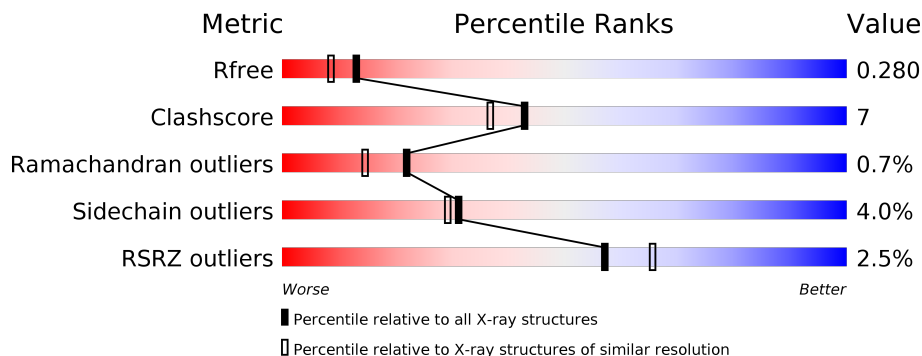
# 1 Overall quality at a glance

The following experimental techniques were used to determine the structure:

*X-RAY DIFFRACTION*

The reported resolution of this entry is 2.15 Å.

Percentile scores (ranging between 0-100) for global validation metrics of the entry are shown in the following graphic. The table shows the number of entries on which the scores are based.



Metric	Whole archive (#Entries)	Similar resolution (#Entries, resolution range(Å))
$R_{free}$	130704	1479 (2.16-2.16)
Clashscore	141614	1585 (2.16-2.16)
Ramachandran outliers	138981	1560 (2.16-2.16)
Sidechain outliers	138945	1559 (2.16-2.16)
RSRZ outliers	127900	1456 (2.16-2.16)

The table below summarises the geometric issues observed across the polymeric chains and their fit to the electron density. The red, orange, yellow and green segments on the lower bar indicate the fraction of residues that contain outliers for  $\geq 3$ , 2, 1 and 0 types of geometric quality criteria respectively. A grey segment represents the fraction of residues that are not modelled. The numeric value for each fraction is indicated below the corresponding segment, with a dot representing fractions  $\leq 5\%$ . The upper red bar (where present) indicates the fraction of residues that have poor fit to the electron density. The numeric value is given above the bar.

Mol	Chain	Length	Quality of chain
1	A	161	 3% 75% 18% • 6%
1	B	161	 2% 71% 20% • 6%
1	C	161	 2% 82% 11% 7%
1	D	161	 4% 84% 9% 7%
1	E	161	 2% 70% 23% • 6%
1	F	161	 % 80% 12% • 7%

## 2 Entry composition [i](#)

There are 3 unique types of molecules in this entry. The entry contains 7807 atoms, of which 0 are hydrogens and 0 are deuteriums.

In the tables below, the ZeroOcc column contains the number of atoms modelled with zero occupancy, the AltConf column contains the number of residues with at least one atom in alternate conformation and the Trace column contains the number of residues modelled with at most 2 atoms.

- Molecule 1 is a protein called Induced myeloid leukemia cell differentiation protein Mcl-1.

Mol	Chain	Residues	Atoms					ZeroOcc	AltConf	Trace
			Total	C	N	O	S			
1	A	152	1225	768	225	228	4	0	0	0
1	B	151	1217	764	224	225	4	0	0	0
1	C	150	1208	759	223	222	4	0	0	0
1	D	150	1208	759	223	222	4	0	0	0
1	E	152	1225	768	225	228	4	0	0	0
1	F	150	1208	759	223	222	4	0	0	0

There are 30 discrepancies between the modelled and reference sequences:

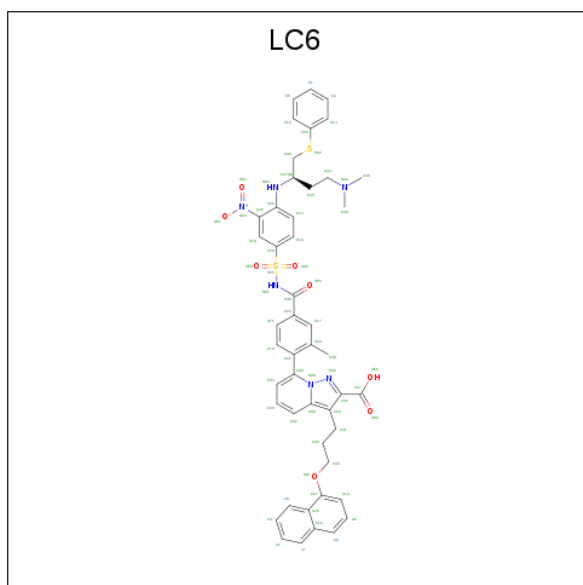
Chain	Residue	Modelled	Actual	Comment	Reference
A	167	GLY	-	EXPRESSION TAG	UNP Q07820
A	168	PRO	-	EXPRESSION TAG	UNP Q07820
A	169	LEU	-	EXPRESSION TAG	UNP Q07820
A	170	GLY	-	EXPRESSION TAG	UNP Q07820
A	171	SER	-	EXPRESSION TAG	UNP Q07820
B	167	GLY	-	EXPRESSION TAG	UNP Q07820
B	168	PRO	-	EXPRESSION TAG	UNP Q07820
B	169	LEU	-	EXPRESSION TAG	UNP Q07820
B	170	GLY	-	EXPRESSION TAG	UNP Q07820
B	171	SER	-	EXPRESSION TAG	UNP Q07820
C	167	GLY	-	EXPRESSION TAG	UNP Q07820
C	168	PRO	-	EXPRESSION TAG	UNP Q07820
C	169	LEU	-	EXPRESSION TAG	UNP Q07820
C	170	GLY	-	EXPRESSION TAG	UNP Q07820
C	171	SER	-	EXPRESSION TAG	UNP Q07820
D	167	GLY	-	EXPRESSION TAG	UNP Q07820
D	168	PRO	-	EXPRESSION TAG	UNP Q07820

*Continued on next page...*

Continued from previous page...

Chain	Residue	Modelled	Actual	Comment	Reference
D	169	LEU	-	EXPRESSION TAG	UNP Q07820
D	170	GLY	-	EXPRESSION TAG	UNP Q07820
D	171	SER	-	EXPRESSION TAG	UNP Q07820
E	167	GLY	-	EXPRESSION TAG	UNP Q07820
E	168	PRO	-	EXPRESSION TAG	UNP Q07820
E	169	LEU	-	EXPRESSION TAG	UNP Q07820
E	170	GLY	-	EXPRESSION TAG	UNP Q07820
E	171	SER	-	EXPRESSION TAG	UNP Q07820
F	167	GLY	-	EXPRESSION TAG	UNP Q07820
F	168	PRO	-	EXPRESSION TAG	UNP Q07820
F	169	LEU	-	EXPRESSION TAG	UNP Q07820
F	170	GLY	-	EXPRESSION TAG	UNP Q07820
F	171	SER	-	EXPRESSION TAG	UNP Q07820

- Molecule 2 is 7-(4-[[4-[[[(2R)-4-(dimethylamino)-1-(phenylsulfanyl)butan-2-yl]amino]-3-nitrophenyl)sulfonyl]carbamoyl]-2-methylphenyl)-3-[3-(naphthalen-1-yloxy)propyl]pyrazolo[1,5-a]pyridine-2-carboxylic acid (three-letter code: LC6) (formula: C<sub>47</sub>H<sub>46</sub>N<sub>6</sub>O<sub>8</sub>S<sub>2</sub>).



Mol	Chain	Residues	Atoms					ZeroOcc	AltConf
			Total	C	N	O	S		
2	A	1	Total	C	N	O	S	0	0
			63	47	6	8	2		
2	B	1	Total	C	N	O	S	0	0
			63	47	6	8	2		
2	C	1	Total	C	N	O	S	0	0
			63	47	6	8	2		
2	D	1	Total	C	N	O	S	0	0
			63	47	6	8	2		

Continued on next page...

*Continued from previous page...*

Mol	Chain	Residues	Atoms					ZeroOcc	AltConf
2	E	1	Total	C	N	O	S	0	0
			63	47	6	8	2		
2	F	1	Total	C	N	O	S	0	0
			63	47	6	8	2		

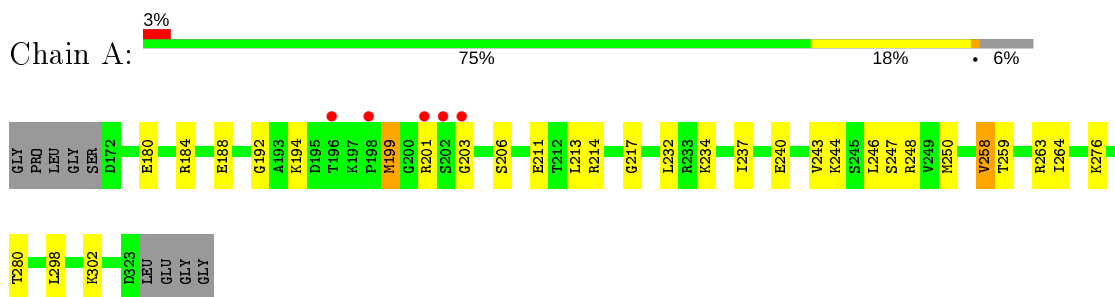
- Molecule 3 is water.

Mol	Chain	Residues	Atoms		ZeroOcc	AltConf
3	A	21	Total	O	0	0
			21	21		
3	B	22	Total	O	0	0
			22	22		
3	C	35	Total	O	0	0
			35	35		
3	D	16	Total	O	0	0
			16	16		
3	E	24	Total	O	0	0
			24	24		
3	F	20	Total	O	0	0
			20	20		

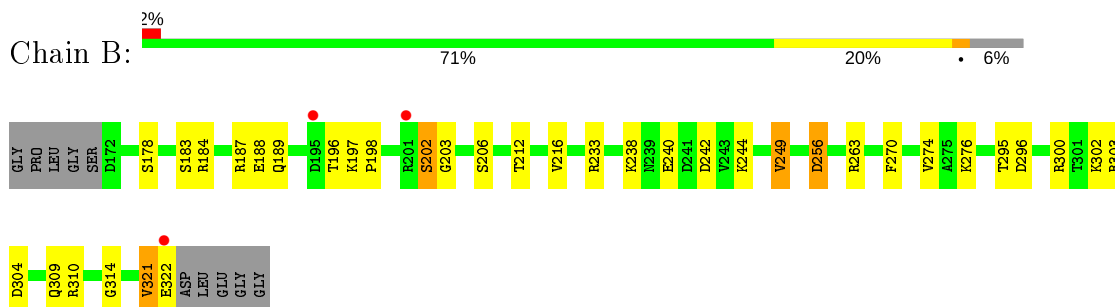
### 3 Residue-property plots [i](#)

These plots are drawn for all protein, RNA, DNA and oligosaccharide chains in the entry. The first graphic for a chain summarises the proportions of the various outlier classes displayed in the second graphic. The second graphic shows the sequence view annotated by issues in geometry and electron density. Residues are color-coded according to the number of geometric quality criteria for which they contain at least one outlier: green = 0, yellow = 1, orange = 2 and red = 3 or more. A red dot above a residue indicates a poor fit to the electron density ( $RSRZ > 2$ ). Stretches of 2 or more consecutive residues without any outlier are shown as a green connector. Residues present in the sample, but not in the model, are shown in grey.

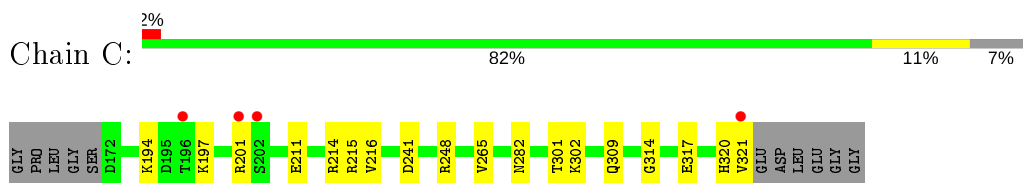
- Molecule 1: Induced myeloid leukemia cell differentiation protein Mcl-1



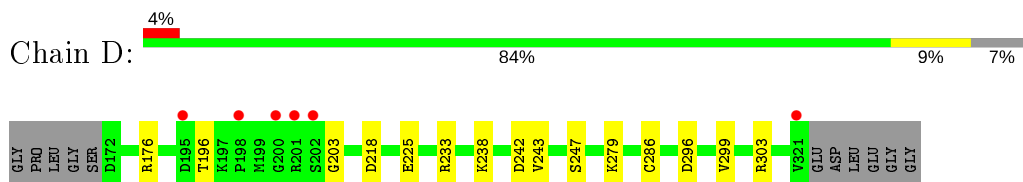
- Molecule 1: Induced myeloid leukemia cell differentiation protein Mcl-1



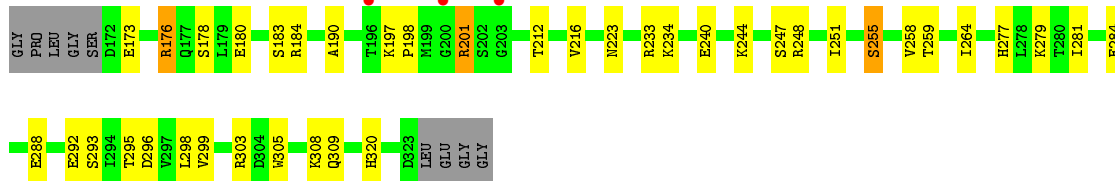
- Molecule 1: Induced myeloid leukemia cell differentiation protein Mcl-1



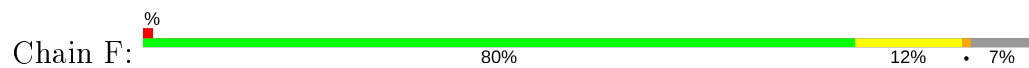
- Molecule 1: Induced myeloid leukemia cell differentiation protein Mcl-1



- Molecule 1: Induced myeloid leukemia cell differentiation protein Mcl-1



- Molecule 1: Induced myeloid leukemia cell differentiation protein Mcl-1



## 4 Data and refinement statistics

Property	Value	Source
Space group	P 1	Depositor
Cell constants a, b, c, $\alpha$ , $\beta$ , $\gamma$	37.29Å 65.50Å 97.77Å 101.92° 89.83° 99.26°	Depositor
Resolution (Å)	36.81 – 2.15 36.78 – 2.14	Depositor EDS
% Data completeness (in resolution range)	94.9 (36.81-2.15) 94.3 (36.78-2.14)	Depositor EDS
$R_{merge}$	(Not available)	Depositor
$R_{sym}$	0.08	Depositor
$\langle I/\sigma(I) \rangle$ <sup>1</sup>	1.34 (at 2.14Å)	Xtrriage
Refinement program	REFMAC 5.7.0032	Depositor
R, $R_{free}$	0.211 , 0.283 0.209 , 0.280	Depositor DCC
$R_{free}$ test set	2339 reflections (5.05%)	wwPDB-VP
Wilson B-factor (Å <sup>2</sup> )	32.3	Xtrriage
Anisotropy	0.270	Xtrriage
Bulk solvent $k_{sol}$ (e/Å <sup>3</sup> ), $B_{sol}$ (Å <sup>2</sup> )	0.35 , 46.5	EDS
L-test for twinning <sup>2</sup>	$\langle  L  \rangle = 0.50$ , $\langle L^2 \rangle = 0.33$	Xtrriage
Estimated twinning fraction	No twinning to report.	Xtrriage
$F_o, F_c$ correlation	0.94	EDS
Total number of atoms	7807	wwPDB-VP
Average B, all atoms (Å <sup>2</sup> )	38.0	wwPDB-VP

Xtrriage's analysis on translational NCS is as follows: *The largest off-origin peak in the Patterson function is 14.39% of the height of the origin peak. No significant pseudotranslation is detected.*

<sup>1</sup>Intensities estimated from amplitudes.

<sup>2</sup>Theoretical values of  $\langle |L| \rangle$ ,  $\langle L^2 \rangle$  for acentric reflections are 0.5, 0.333 respectively for untwinned datasets, and 0.375, 0.2 for perfectly twinned datasets.



## 5 Model quality [i](#)

### 5.1 Standard geometry [i](#)

Bond lengths and bond angles in the following residue types are not validated in this section: LC6

The Z score for a bond length (or angle) is the number of standard deviations the observed value is removed from the expected value. A bond length (or angle) with  $|Z| > 5$  is considered an outlier worth inspection. RMSZ is the root-mean-square of all Z scores of the bond lengths (or angles).

Mol	Chain	Bond lengths		Bond angles	
		RMSZ	# Z  >5	RMSZ	# Z  >5
1	A	0.47	0/1245	0.63	0/1674
1	B	0.50	0/1237	0.67	0/1663
1	C	0.50	0/1228	0.62	0/1651
1	D	0.54	0/1228	0.65	0/1651
1	E	0.48	0/1245	0.64	0/1674
1	F	0.45	0/1228	0.62	0/1651
All	All	0.49	0/7411	0.64	0/9964

There are no bond length outliers.

There are no bond angle outliers.

There are no chirality outliers.

There are no planarity outliers.

### 5.2 Too-close contacts [i](#)

In the following table, the Non-H and H(model) columns list the number of non-hydrogen atoms and hydrogen atoms in the chain respectively. The H(added) column lists the number of hydrogen atoms added and optimized by MolProbity. The Clashes column lists the number of clashes within the asymmetric unit, whereas Symm-Clashes lists symmetry related clashes.

Mol	Chain	Non-H	H(model)	H(added)	Clashes	Symm-Clashes
1	A	1225	0	1230	23	0
1	B	1217	0	1226	23	0
1	C	1208	0	1220	9	0
1	D	1208	0	1220	3	0
1	E	1225	0	1230	27	0
1	F	1208	0	1220	13	0
2	A	63	0	45	3	0

*Continued on next page...*

*Continued from previous page...*

Mol	Chain	Non-H	H(model)	H(added)	Clashes	Symm-Clashes
2	B	63	0	45	3	0
2	C	63	0	45	2	0
2	D	63	0	45	5	0
2	E	63	0	45	2	0
2	F	63	0	45	2	0
3	A	21	0	0	2	0
3	B	22	0	0	2	0
3	C	35	0	0	1	0
3	D	16	0	0	0	0
3	E	24	0	0	2	0
3	F	20	0	0	0	0
All	All	7807	0	7616	104	0

The all-atom clashscore is defined as the number of clashes found per 1000 atoms (including hydrogen atoms). The all-atom clashscore for this structure is 7.

All (104) close contacts within the same asymmetric unit are listed below, sorted by their clash magnitude.

Atom-1	Atom-2	Interatomic distance (Å)	Clash overlap (Å)
1:B:183:SER:HB2	1:B:187:ARG:HH12	1.42	0.84
1:C:248:ARG:HG3	3:E:412:HOH:O	1.80	0.81
1:E:244:LYS:O	3:E:405:HOH:O	2.02	0.77
2:B:501:LC6:H36	2:D:501:LC6:O60	1.87	0.75
1:E:201:ARG:H	1:E:201:ARG:HD2	1.51	0.74
1:B:183:SER:HB2	1:B:187:ARG:NH1	2.03	0.71
1:E:180:GLU:O	1:E:184:ARG:HG3	1.92	0.69
1:C:216:VAL:HG12	1:C:265:VAL:HG11	1.73	0.69
1:C:248:ARG:NH1	3:C:928:HOH:O	2.09	0.68
1:E:247:SER:HB3	1:E:293:SER:OG	1.95	0.67
1:B:296:ASP:O	1:B:300:ARG:HB2	1.94	0.67
1:A:276:LYS:NZ	3:A:920:HOH:O	2.28	0.66
1:B:198:PRO:HA	3:B:920:HOH:O	1.94	0.66
1:E:223:ASN:HD22	1:F:248:ARG:NH2	1.93	0.65
2:D:501:LC6:O54	2:D:501:LC6:N50	2.30	0.64
1:F:243:VAL:HG21	1:F:286:CYS:HB3	1.79	0.64
1:F:195:ASP:OD1	1:F:197:LYS:HB2	2.00	0.62
1:A:211:GLU:HG3	1:A:214:ARG:HH21	1.65	0.62
1:A:199:MET:HB2	1:A:203:GLY:HA3	1.82	0.61
1:B:309:GLN:O	1:B:314:GLY:HA3	2.01	0.61
1:A:211:GLU:HG3	1:A:214:ARG:NH2	2.14	0.61
1:B:321:VAL:HG13	1:B:322:GLU:N	2.16	0.60

*Continued on next page...*

*Continued from previous page...*

Atom-1	Atom-2	Interatomic distance (Å)	Clash overlap (Å)
1:A:203:GLY:HA2	1:A:206:SER:HB2	1.84	0.58
1:E:176:ARG:NH2	1:E:201:ARG:HD3	2.19	0.58
1:A:258:VAL:O	1:A:263:ARG:HD3	2.03	0.58
1:D:243:VAL:HG21	1:D:286:CYS:HB3	1.86	0.58
1:F:304:ASP:O	1:F:308:LYS:HG3	2.05	0.57
1:B:270:PHE:O	1:B:274:VAL:HG23	2.06	0.56
1:E:178:SER:HB3	1:E:295:THR:HG23	1.87	0.56
1:A:276:LYS:O	1:A:280:THR:HG23	2.06	0.55
1:E:251:ILE:O	1:E:255:SER:OG	2.21	0.55
1:C:320:HIS:O	1:C:321:VAL:HB	2.07	0.55
1:F:282:ASN:HA	1:F:284:GLU:OE1	2.07	0.55
1:A:180:GLU:O	1:A:184:ARG:HG3	2.07	0.54
2:B:501:LC6:H35	2:D:501:LC6:N48	2.23	0.54
1:A:248:ARG:HB3	1:B:249:VAL:CG2	2.38	0.53
1:A:192:GLY:HA2	3:A:911:HOH:O	2.06	0.53
1:B:238:LYS:HG2	1:B:242:ASP:OD2	2.08	0.53
1:B:321:VAL:HG22	1:B:322:GLU:H	1.72	0.53
1:C:309:GLN:O	1:C:314:GLY:HA3	2.07	0.53
1:E:240:GLU:O	1:E:244:LYS:HG2	2.08	0.53
1:B:212:THR:O	1:B:216:VAL:HG22	2.09	0.53
1:D:299:VAL:O	1:D:303:ARG:HB2	2.10	0.51
1:F:201:ARG:HB2	1:F:201:ARG:NH1	2.26	0.51
1:A:246:LEU:HD22	2:A:501:LC6:H9	1.91	0.50
1:B:321:VAL:HG13	1:B:322:GLU:H	1.76	0.50
1:B:184:ARG:O	1:B:188:GLU:HB2	2.12	0.50
1:E:279:LYS:HG2	1:E:284:GLU:HG2	1.93	0.50
1:A:248:ARG:HB3	1:B:249:VAL:HG21	1.94	0.50
1:D:238:LYS:HG2	1:D:242:ASP:OD2	2.11	0.50
2:A:501:LC6:O54	2:A:501:LC6:N50	2.30	0.50
1:E:173:GLU:OE1	1:E:176:ARG:NH2	2.45	0.50
1:E:292:GLU:O	1:E:296:ASP:HB2	2.12	0.49
1:A:247:SER:HA	1:A:250:MET:HE3	1.93	0.49
1:E:183:SER:HB2	1:E:288:GLU:OE2	2.13	0.49
1:E:258:VAL:HG22	1:E:259:THR:H	1.78	0.49
1:A:259:THR:HG23	1:A:302:LYS:HD2	1.96	0.48
1:E:234:LYS:CE	2:E:501:LC6:H5	2.44	0.47
1:A:234:LYS:HE3	2:A:501:LC6:H5	1.96	0.47
1:A:240:GLU:O	1:A:244:LYS:HG3	2.14	0.47
2:D:501:LC6:H4	1:E:320:HIS:CG	2.49	0.47
2:C:501:LC6:H12	2:C:501:LC6:H43	1.78	0.47
1:A:243:VAL:O	1:A:246:LEU:HB2	2.13	0.47

*Continued on next page...*

*Continued from previous page...*

Atom-1	Atom-2	Interatomic distance (Å)	Clash overlap (Å)
1:E:305:TRP:O	1:E:309:GLN:HG2	2.15	0.47
2:B:501:LC6:H26	2:D:501:LC6:H24	1.96	0.47
1:F:258:VAL:HG12	1:F:259:THR:N	2.30	0.46
1:E:223:ASN:HD22	1:F:248:ARG:HH21	1.63	0.46
1:E:264:ILE:HG12	1:E:298:LEU:HD11	1.97	0.46
1:B:240:GLU:O	1:B:244:LYS:HG3	2.16	0.46
1:E:197:LYS:HD2	1:E:198:PRO:O	2.16	0.45
1:F:299:VAL:O	1:F:303:ARG:HB2	2.17	0.45
1:F:235:LEU:HD13	1:F:246:LEU:HD22	1.99	0.45
1:A:264:ILE:HG12	1:A:298:LEU:CD1	2.47	0.45
1:A:232:LEU:HD12	1:A:237:ILE:HD12	2.00	0.45
1:E:277:HIS:O	1:E:281:ILE:HG12	2.17	0.45
1:A:199:MET:CB	1:A:203:GLY:HA3	2.47	0.44
1:B:202:SER:HB2	1:B:206:SER:OG	2.16	0.44
2:E:501:LC6:O57	2:E:501:LC6:N50	2.42	0.44
1:B:256:ASP:O	1:B:263:ARG:NH2	2.33	0.44
1:C:248:ARG:HA	1:C:248:ARG:HD3	1.76	0.44
2:F:501:LC6:H41	2:F:501:LC6:H14	1.80	0.44
2:F:501:LC6:N50	2:F:501:LC6:O54	2.31	0.43
1:E:258:VAL:HG22	1:E:259:THR:N	2.32	0.43
1:A:264:ILE:HG12	1:A:298:LEU:HD11	2.00	0.43
1:C:211:GLU:O	1:C:214:ARG:HB2	2.19	0.42
1:B:304:ASP:OD1	3:B:914:HOH:O	2.21	0.42
1:E:299:VAL:HG12	1:E:303:ARG:NH2	2.35	0.42
1:A:188:GLU:HG2	1:A:194:LYS:HA	2.01	0.42
1:F:258:VAL:HG12	1:F:259:THR:H	1.83	0.42
1:E:212:THR:O	1:E:216:VAL:HG22	2.20	0.42
1:E:190:ALA:O	1:E:279:LYS:HD2	2.19	0.42
1:B:178:SER:HB2	1:B:295:THR:HG23	2.00	0.42
1:B:302:LYS:O	1:B:303:ARG:C	2.57	0.42
1:C:301:THR:OG1	1:C:302:LYS:HG2	2.19	0.42
1:B:187:ARG:CZ	1:B:187:ARG:HB2	2.49	0.42
1:A:213:LEU:O	1:A:217:GLY:N	2.50	0.41
1:E:244:LYS:HG2	1:E:244:LYS:H	1.62	0.41
1:E:279:LYS:HE2	1:E:284:GLU:OE2	2.20	0.41
1:B:197:LYS:HA	1:B:198:PRO:HD3	1.91	0.41
1:F:279:LYS:HA	1:F:284:GLU:HG3	2.02	0.41
1:C:216:VAL:CG1	1:C:265:VAL:HG11	2.47	0.41
2:C:501:LC6:N50	2:C:501:LC6:O54	2.52	0.41
1:B:189:GLN:HB3	1:B:276:LYS:HE3	2.03	0.40
1:F:201:ARG:HH11	1:F:201:ARG:HB2	1.86	0.40

There are no symmetry-related clashes.

## 5.3 Torsion angles [i](#)

### 5.3.1 Protein backbone [i](#)

In the following table, the Percentiles column shows the percent Ramachandran outliers of the chain as a percentile score with respect to all X-ray entries followed by that with respect to entries of similar resolution.

The Analysed column shows the number of residues for which the backbone conformation was analysed, and the total number of residues.

Mol	Chain	Analysed	Favoured	Allowed	Outliers	Percentiles	
1	A	150/161 (93%)	144 (96%)	5 (3%)	1 (1%)	22	15
1	B	149/161 (92%)	143 (96%)	4 (3%)	2 (1%)	12	6
1	C	148/161 (92%)	143 (97%)	4 (3%)	1 (1%)	22	15
1	D	148/161 (92%)	144 (97%)	3 (2%)	1 (1%)	22	15
1	E	150/161 (93%)	143 (95%)	7 (5%)	0	100	100
1	F	148/161 (92%)	141 (95%)	6 (4%)	1 (1%)	22	15
All	All	893/966 (92%)	858 (96%)	29 (3%)	6 (1%)	22	15

All (6) Ramachandran outliers are listed below:

Mol	Chain	Res	Type
1	C	201	ARG
1	A	199	MET
1	B	203	GLY
1	D	203	GLY
1	F	200	GLY
1	B	321	VAL

### 5.3.2 Protein sidechains [i](#)

In the following table, the Percentiles column shows the percent sidechain outliers of the chain as a percentile score with respect to all X-ray entries followed by that with respect to entries of similar resolution.

The Analysed column shows the number of residues for which the sidechain conformation was analysed, and the total number of residues.

Mol	Chain	Analysed	Rotameric	Outliers	Percentiles	
1	A	133/138 (96%)	131 (98%)	2 (2%)	65	69
1	B	132/138 (96%)	126 (96%)	6 (4%)	27	24
1	C	131/138 (95%)	125 (95%)	6 (5%)	27	23
1	D	131/138 (95%)	123 (94%)	8 (6%)	18	14
1	E	133/138 (96%)	127 (96%)	6 (4%)	27	24
1	F	131/138 (95%)	127 (97%)	4 (3%)	40	39
All	All	791/828 (96%)	759 (96%)	32 (4%)	31	29

All (32) residues with a non-rotameric sidechain are listed below:

Mol	Chain	Res	Type
1	A	201	ARG
1	A	258	VAL
1	B	196	THR
1	B	202	SER
1	B	233	ARG
1	B	249	VAL
1	B	256	ASP
1	B	310	ARG
1	C	194	LYS
1	C	197	LYS
1	C	215	ARG
1	C	241	ASP
1	C	282	ASN
1	C	317	GLU
1	D	176	ARG
1	D	196	THR
1	D	218	ASP
1	D	225	GLU
1	D	233	ARG
1	D	247	SER
1	D	279	LYS
1	D	296	ASP
1	E	176	ARG
1	E	201	ARG
1	E	233	ARG
1	E	248	ARG
1	E	255	SER
1	E	308	LYS
1	F	197	LYS
1	F	211	GLU

*Continued on next page...*

*Continued from previous page...*

Mol	Chain	Res	Type
1	F	218	ASP
1	F	234	LYS

Some sidechains can be flipped to improve hydrogen bonding and reduce clashes. All (3) such sidechains are listed below:

Mol	Chain	Res	Type
1	A	223	ASN
1	D	223	ASN
1	E	223	ASN

### 5.3.3 RNA [i](#)

There are no RNA molecules in this entry.

### 5.4 Non-standard residues in protein, DNA, RNA chains [i](#)

There are no non-standard protein/DNA/RNA residues in this entry.

### 5.5 Carbohydrates [i](#)

There are no monosaccharides in this entry.

### 5.6 Ligand geometry [i](#)

6 ligands are modelled in this entry.

In the following table, the Counts columns list the number of bonds (or angles) for which Mogul statistics could be retrieved, the number of bonds (or angles) that are observed in the model and the number of bonds (or angles) that are defined in the Chemical Component Dictionary. The Link column lists molecule types, if any, to which the group is linked. The Z score for a bond length (or angle) is the number of standard deviations the observed value is removed from the expected value. A bond length (or angle) with  $|Z| > 2$  is considered an outlier worth inspection. RMSZ is the root-mean-square of all Z scores of the bond lengths (or angles).

Mol	Type	Chain	Res	Link	Bond lengths			Bond angles		
					Counts	RMSZ	# Z  > 2	Counts	RMSZ	# Z  > 2
2	LC6	B	501	-	61,69,69	1.33	8 (13%)	73,98,98	1.31	9 (12%)
2	LC6	F	501	-	61,69,69	1.27	7 (11%)	73,98,98	1.69	12 (16%)
2	LC6	D	501	-	61,69,69	1.23	8 (13%)	73,98,98	1.61	11 (15%)

Mol	Type	Chain	Res	Link	Bond lengths			Bond angles		
					Counts	RMSZ	# Z  > 2	Counts	RMSZ	# Z  > 2
2	LC6	C	501	-	61,69,69	1.29	7 (11%)	73,98,98	1.29	8 (10%)
2	LC6	A	501	-	61,69,69	1.26	10 (16%)	73,98,98	1.48	14 (19%)
2	LC6	E	501	-	61,69,69	1.35	9 (14%)	73,98,98	1.65	16 (21%)

In the following table, the Chirals column lists the number of chiral outliers, the number of chiral centers analysed, the number of these observed in the model and the number defined in the Chemical Component Dictionary. Similar counts are reported in the Torsion and Rings columns. '-' means no outliers of that kind were identified.

Mol	Type	Chain	Res	Link	Chirals	Torsions	Rings
2	LC6	B	501	-	-	3/42/48/48	0/7/7/7
2	LC6	F	501	-	-	5/42/48/48	0/7/7/7
2	LC6	D	501	-	-	3/42/48/48	0/7/7/7
2	LC6	C	501	-	-	5/42/48/48	0/7/7/7
2	LC6	A	501	-	-	13/42/48/48	0/7/7/7
2	LC6	E	501	-	-	8/42/48/48	0/7/7/7

All (49) bond length outliers are listed below:

Mol	Chain	Res	Type	Atoms	Z	Observed(Å)	Ideal(Å)
2	C	501	LC6	S63-N51	4.13	1.73	1.64
2	B	501	LC6	S63-N51	3.90	1.72	1.64
2	E	501	LC6	S63-N51	3.43	1.71	1.64
2	D	501	LC6	S63-N51	3.30	1.71	1.64
2	A	501	LC6	S63-N51	3.23	1.71	1.64
2	F	501	LC6	C34-C35	-3.22	1.33	1.38
2	B	501	LC6	C34-C35	-3.21	1.33	1.38
2	F	501	LC6	S63-N51	3.13	1.71	1.64
2	D	501	LC6	C34-C35	-3.04	1.34	1.38
2	C	501	LC6	C20-C19	-2.99	1.37	1.43
2	C	501	LC6	C36-N51	2.97	1.42	1.39
2	E	501	LC6	C34-C35	-2.96	1.34	1.38
2	A	501	LC6	C34-C35	-2.93	1.34	1.38
2	C	501	LC6	C33-C34	2.92	1.45	1.38
2	E	501	LC6	C33-C34	2.90	1.45	1.38
2	F	501	LC6	C33-C34	2.89	1.45	1.38
2	E	501	LC6	C35-N49	-2.88	1.36	1.41
2	E	501	LC6	C30-N49	-2.80	1.37	1.40
2	B	501	LC6	C33-C34	2.80	1.44	1.38
2	B	501	LC6	C41-C24	-2.73	1.47	1.52

*Continued on next page...*



*Continued from previous page...*

Mol	Chain	Res	Type	Atoms	Z	Observed(Å)	Ideal(Å)
2	B	501	LC6	C36-N51	2.71	1.42	1.39
2	C	501	LC6	C41-C24	-2.66	1.47	1.52
2	A	501	LC6	C33-C34	2.64	1.44	1.38
2	C	501	LC6	C34-C35	-2.63	1.34	1.38
2	B	501	LC6	C35-N49	-2.61	1.36	1.41
2	A	501	LC6	C21-C35	-2.57	1.45	1.48
2	F	501	LC6	C41-C24	-2.55	1.47	1.52
2	D	501	LC6	C20-C19	-2.53	1.38	1.43
2	A	501	LC6	C20-C19	-2.51	1.38	1.43
2	A	501	LC6	C30-N49	-2.49	1.37	1.40
2	E	501	LC6	C36-N51	2.48	1.42	1.39
2	E	501	LC6	C22-C36	-2.47	1.45	1.50
2	D	501	LC6	C31-N48	-2.39	1.33	1.35
2	F	501	LC6	C20-C19	-2.36	1.38	1.43
2	F	501	LC6	C22-C36	-2.35	1.45	1.50
2	D	501	LC6	C33-C34	2.33	1.43	1.38
2	A	501	LC6	C36-N51	2.33	1.41	1.39
2	C	501	LC6	C35-N49	-2.31	1.37	1.41
2	A	501	LC6	C41-C24	-2.26	1.48	1.52
2	D	501	LC6	C35-N49	-2.26	1.37	1.41
2	D	501	LC6	C41-C24	-2.24	1.48	1.52
2	E	501	LC6	C41-C24	-2.20	1.48	1.52
2	D	501	LC6	C30-N49	-2.18	1.37	1.40
2	F	501	LC6	C30-N49	-2.17	1.37	1.40
2	B	501	LC6	C20-C19	-2.12	1.39	1.43
2	E	501	LC6	C31-N48	-2.05	1.33	1.35
2	A	501	LC6	C29-S63	2.03	1.79	1.76
2	B	501	LC6	O59-S63	2.00	1.45	1.43
2	A	501	LC6	C35-N49	-2.00	1.37	1.41

All (70) bond angle outliers are listed below:

Mol	Chain	Res	Type	Atoms	Z	Observed(°)	Ideal(°)
2	A	501	LC6	C26-C25-N50	-5.70	117.57	123.42
2	D	501	LC6	C26-C25-N50	-5.38	117.89	123.42
2	D	501	LC6	C25-N50-C47	-5.10	115.93	124.69
2	E	501	LC6	C26-C25-N50	-4.86	118.43	123.42
2	F	501	LC6	C26-C25-N50	-4.80	118.49	123.42
2	F	501	LC6	C22-C36-N51	-4.67	110.44	116.09
2	F	501	LC6	O59-S63-C29	-4.58	102.32	107.97
2	F	501	LC6	O55-C36-N51	4.53	126.65	121.08
2	E	501	LC6	O55-C36-N51	4.53	126.64	121.08

*Continued on next page...*

*Continued from previous page...*

Mol	Chain	Res	Type	Atoms	Z	Observed(°)	Ideal(°)
2	D	501	LC6	O59-S63-O58	4.32	124.86	119.55
2	E	501	LC6	C25-N50-C47	-4.07	117.70	124.69
2	A	501	LC6	C25-N50-C47	-4.05	117.72	124.69
2	F	501	LC6	C25-N50-C47	-4.04	117.75	124.69
2	C	501	LC6	C26-C25-N50	-3.91	119.40	123.42
2	B	501	LC6	C26-C25-N50	-3.86	119.46	123.42
2	B	501	LC6	C25-N50-C47	-3.82	118.13	124.69
2	F	501	LC6	O59-S63-O58	3.79	124.21	119.55
2	E	501	LC6	C46-S62-C28	-3.78	96.58	103.79
2	C	501	LC6	C25-N50-C47	-3.73	118.29	124.69
2	D	501	LC6	C22-C17-C23	-3.66	117.03	121.70
2	D	501	LC6	O59-S63-C29	-3.55	103.60	107.97
2	B	501	LC6	C29-S63-N51	-3.46	100.73	105.97
2	C	501	LC6	C43-C47-C46	-3.43	104.77	112.18
2	F	501	LC6	C22-C17-C23	-3.43	117.32	121.70
2	E	501	LC6	C11-C22-C17	3.41	123.27	119.24
2	E	501	LC6	C22-C17-C23	-3.34	117.44	121.70
2	D	501	LC6	C29-S63-N51	-3.20	101.13	105.97
2	D	501	LC6	C11-C22-C17	3.14	122.95	119.24
2	D	501	LC6	C36-N51-S63	-3.09	119.37	123.36
2	A	501	LC6	C46-S62-C28	-3.08	97.91	103.79
2	F	501	LC6	C11-C22-C17	3.08	122.88	119.24
2	A	501	LC6	C22-C17-C23	-3.07	117.78	121.70
2	C	501	LC6	C43-C47-N50	-3.07	106.20	110.53
2	E	501	LC6	C10-C21-C35	-2.89	113.77	119.38
2	C	501	LC6	C29-S63-N51	-2.76	101.80	105.97
2	B	501	LC6	C43-C47-C46	-2.71	106.34	112.18
2	E	501	LC6	O59-S63-O58	2.70	122.87	119.55
2	A	501	LC6	C11-C22-C17	2.60	122.31	119.24
2	E	501	LC6	C43-C47-C46	-2.59	106.60	112.18
2	A	501	LC6	C10-C21-C35	-2.47	114.57	119.38
2	B	501	LC6	O59-S63-O58	2.45	122.56	119.55
2	A	501	LC6	C18-C26-C25	2.43	123.73	121.53
2	E	501	LC6	C36-N51-S63	-2.39	120.27	123.36
2	A	501	LC6	O55-C36-N51	2.38	124.00	121.08
2	F	501	LC6	C18-C26-C25	2.38	123.68	121.53
2	A	501	LC6	O58-S63-C29	-2.37	105.05	107.97
2	D	501	LC6	C26-C18-C29	-2.36	116.59	119.13
2	C	501	LC6	C8-C20-C19	2.36	120.94	117.89
2	A	501	LC6	C8-C20-C19	2.33	120.90	117.89
2	B	501	LC6	C45-O61-C27	-2.32	110.81	117.74
2	E	501	LC6	C16-C29-S63	2.31	122.29	119.77

*Continued on next page...*

*Continued from previous page...*

Mol	Chain	Res	Type	Atoms	Z	Observed(°)	Ideal(°)
2	A	501	LC6	C29-S63-N51	-2.29	102.50	105.97
2	F	501	LC6	C10-C21-C35	-2.27	114.97	119.38
2	E	501	LC6	C11-C22-C36	-2.25	113.32	120.62
2	D	501	LC6	O55-C36-N51	2.23	123.81	121.08
2	E	501	LC6	C10-C11-C22	-2.22	118.19	120.78
2	E	501	LC6	C8-C20-C19	2.18	120.71	117.89
2	E	501	LC6	C18-C26-C25	2.15	123.48	121.53
2	D	501	LC6	C43-C47-N50	-2.13	107.53	110.53
2	C	501	LC6	C18-C26-C25	2.13	123.45	121.53
2	B	501	LC6	O59-S63-C29	-2.12	105.35	107.97
2	A	501	LC6	C12-C25-N50	2.09	125.58	122.25
2	F	501	LC6	C26-C18-C29	-2.09	116.88	119.13
2	B	501	LC6	C18-C29-S63	-2.08	116.75	119.08
2	F	501	LC6	C8-C20-C19	2.07	120.57	117.89
2	B	501	LC6	C18-C26-C25	2.07	123.41	121.53
2	C	501	LC6	C45-O61-C27	-2.06	111.57	117.74
2	A	501	LC6	C11-C22-C36	-2.06	113.95	120.62
2	E	501	LC6	C45-O61-C27	-2.06	111.58	117.74
2	A	501	LC6	C45-O61-C27	-2.05	111.61	117.74

There are no chirality outliers.

All (37) torsion outliers are listed below:

Mol	Chain	Res	Type	Atoms
2	B	501	LC6	C47-C43-C44-N52
2	F	501	LC6	C36-N51-S63-C29
2	C	501	LC6	C47-C43-C44-N52
2	A	501	LC6	C36-N51-S63-C29
2	A	501	LC6	C36-N51-S63-O58
2	A	501	LC6	C36-N51-S63-O59
2	F	501	LC6	C43-C44-N52-C39
2	F	501	LC6	C43-C44-N52-C40
2	D	501	LC6	C43-C44-N52-C40
2	C	501	LC6	C43-C44-N52-C39
2	C	501	LC6	C43-C44-N52-C40
2	A	501	LC6	C43-C44-N52-C39
2	A	501	LC6	C43-C44-N52-C40
2	E	501	LC6	C43-C44-N52-C39
2	E	501	LC6	C43-C44-N52-C40
2	D	501	LC6	C43-C44-N52-C39
2	A	501	LC6	C44-C43-C47-N50
2	E	501	LC6	C44-C43-C47-N50

*Continued on next page...*

*Continued from previous page...*

Mol	Chain	Res	Type	Atoms
2	A	501	LC6	C11-C22-C36-N51
2	A	501	LC6	C17-C22-C36-N51
2	F	501	LC6	C36-N51-S63-O58
2	A	501	LC6	C44-C43-C47-C46
2	E	501	LC6	C44-C43-C47-C46
2	F	501	LC6	S62-C46-C47-N50
2	D	501	LC6	S62-C46-C47-N50
2	A	501	LC6	S62-C46-C47-N50
2	E	501	LC6	S62-C46-C47-N50
2	A	501	LC6	S62-C46-C47-C43
2	E	501	LC6	S62-C46-C47-C43
2	B	501	LC6	C14-C28-S62-C46
2	C	501	LC6	C14-C28-S62-C46
2	E	501	LC6	C14-C28-S62-C46
2	A	501	LC6	C14-C28-S62-C46
2	E	501	LC6	C15-C28-S62-C46
2	A	501	LC6	C15-C28-S62-C46
2	C	501	LC6	C15-C28-S62-C46
2	B	501	LC6	C15-C28-S62-C46

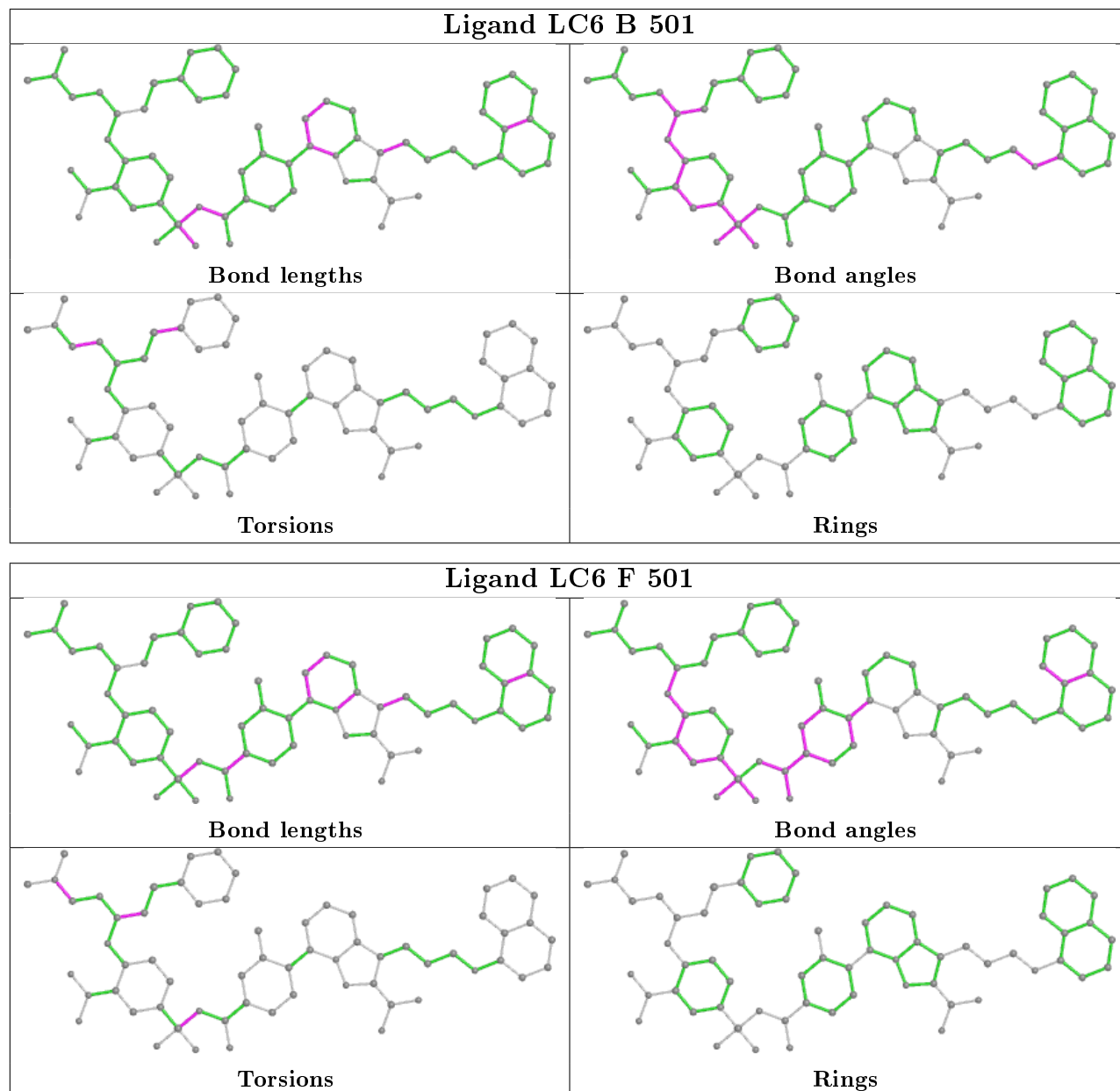
There are no ring outliers.

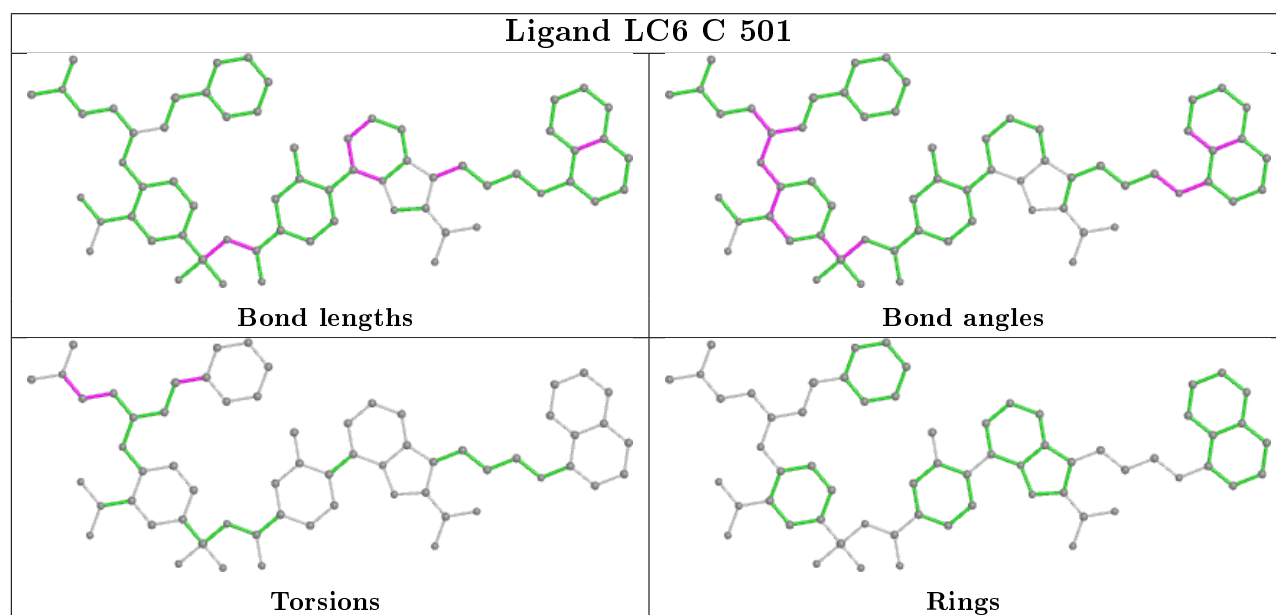
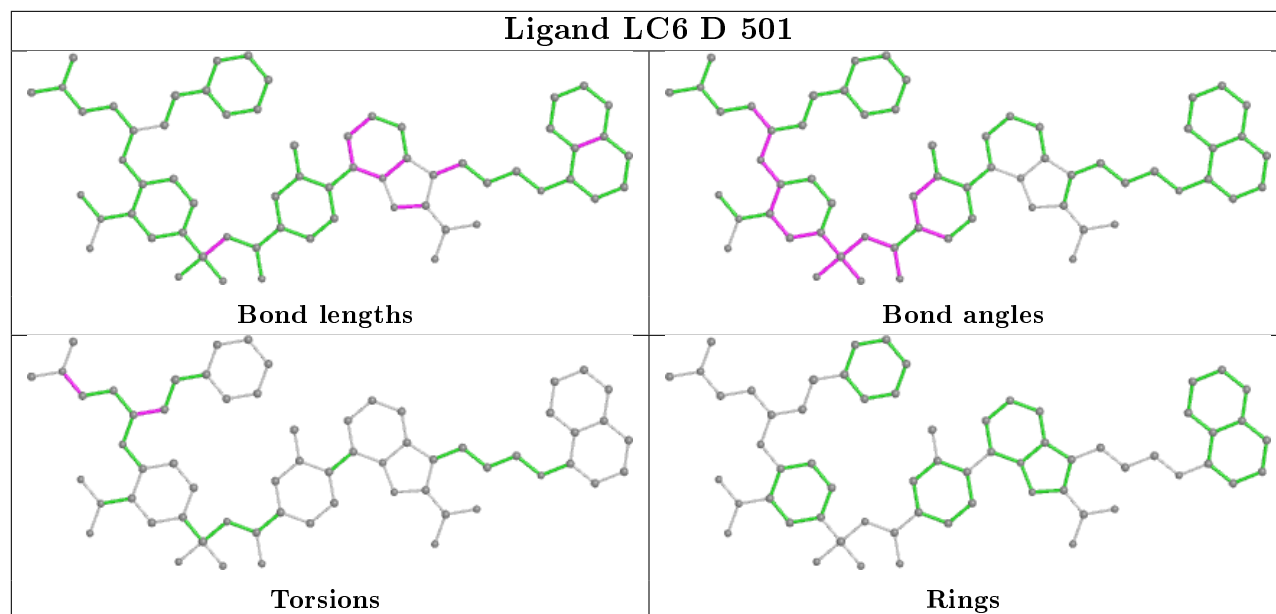
6 monomers are involved in 14 short contacts:

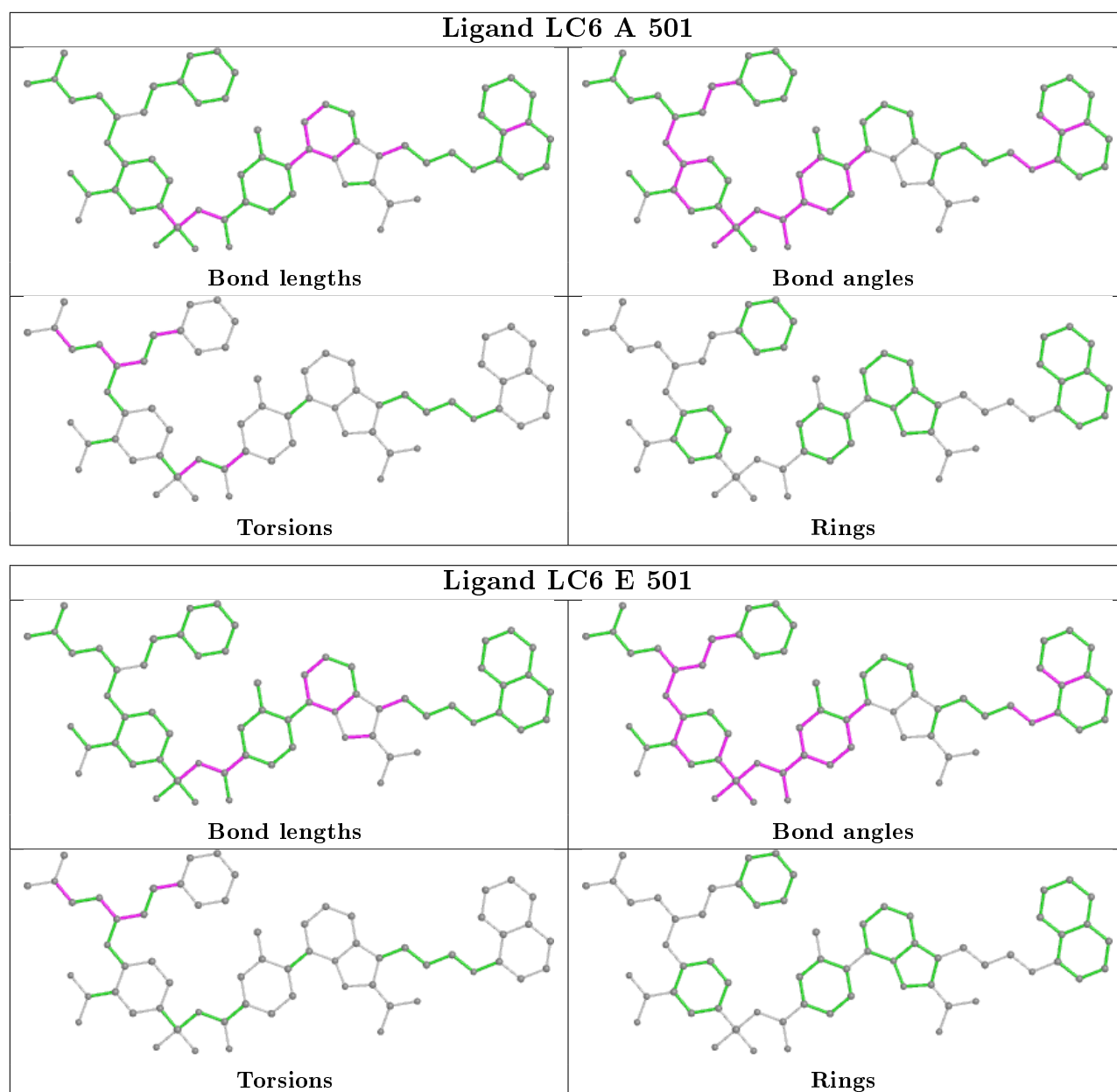
Mol	Chain	Res	Type	Clashes	Symm-Clashes
2	B	501	LC6	3	0
2	F	501	LC6	2	0
2	D	501	LC6	5	0
2	C	501	LC6	2	0
2	A	501	LC6	3	0
2	E	501	LC6	2	0

The following is a two-dimensional graphical depiction of Mogul quality analysis of bond lengths, bond angles, torsion angles, and ring geometry for all instances of the Ligand of Interest. In addition, ligands with molecular weight > 250 and outliers as shown on the validation Tables will also be included. For torsion angles, if less than 5% of the Mogul distribution of torsion angles is within 10 degrees of the torsion angle in question, then that torsion angle is considered an outlier. Any bond that is central to one or more torsion angles identified as an outlier by Mogul will be highlighted in the graph. For rings, the root-mean-square deviation (RMSD) between the ring in question and similar rings identified by Mogul is calculated over all ring torsion angles. If the average RMSD is greater than 60 degrees and the minimal RMSD between the ring in question and any Mogul-identified rings is also greater than 60 degrees, then that ring is considered an outlier. The outliers are highlighted in purple. The color gray indicates Mogul did not find sufficient

equivalents in the CSD to analyse the geometry.







## 5.7 Other polymers [i](#)

There are no such residues in this entry.

## 5.8 Polymer linkage issues [i](#)

There are no chain breaks in this entry.

## 6 Fit of model and data

### 6.1 Protein, DNA and RNA chains

In the following table, the column labelled ‘#RSRZ> 2’ contains the number (and percentage) of RSRZ outliers, followed by percent RSRZ outliers for the chain as percentile scores relative to all X-ray entries and entries of similar resolution. The OWAB column contains the minimum, median, 95<sup>th</sup> percentile and maximum values of the occupancy-weighted average B-factor per residue. The column labelled ‘Q< 0.9’ lists the number of (and percentage) of residues with an average occupancy less than 0.9.

Mol	Chain	Analysed	<RSRZ>	#RSRZ>2	OWAB(Å <sup>2</sup> )	Q<0.9
1	A	152/161 (94%)	0.13	5 (3%) 46 55	22, 35, 66, 112	0
1	B	151/161 (93%)	0.06	3 (1%) 65 72	22, 33, 60, 91	0
1	C	150/161 (93%)	0.04	4 (2%) 54 63	20, 32, 55, 88	0
1	D	150/161 (93%)	0.05	6 (4%) 38 47	20, 33, 66, 101	0
1	E	152/161 (94%)	0.10	3 (1%) 65 72	21, 38, 66, 103	0
1	F	150/161 (93%)	0.06	2 (1%) 77 82	24, 38, 66, 103	0
All	All	905/966 (93%)	0.07	23 (2%) 57 65	20, 35, 66, 112	0

All (23) RSRZ outliers are listed below:

Mol	Chain	Res	Type	RSRZ
1	A	201	ARG	9.1
1	A	196	THR	5.0
1	D	202	SER	4.3
1	D	200	GLY	4.2
1	E	196	THR	3.9
1	E	200	GLY	3.7
1	F	201	ARG	3.7
1	C	321	VAL	3.6
1	A	202	SER	3.4
1	D	201	ARG	3.4
1	A	203	GLY	3.2
1	E	203	GLY	3.1
1	C	201	ARG	3.1
1	C	196	THR	2.9
1	D	198	PRO	2.9
1	D	321	VAL	2.9
1	B	201	ARG	2.8
1	C	202	SER	2.7
1	F	202	SER	2.4

*Continued on next page...*



*Continued from previous page...*

Mol	Chain	Res	Type	RSRZ
1	B	322	GLU	2.3
1	A	198	PRO	2.2
1	B	195	ASP	2.2
1	D	195	ASP	2.2

## 6.2 Non-standard residues in protein, DNA, RNA chains [i](#)

There are no non-standard protein/DNA/RNA residues in this entry.

## 6.3 Carbohydrates [i](#)

There are no monosaccharides in this entry.

## 6.4 Ligands [i](#)

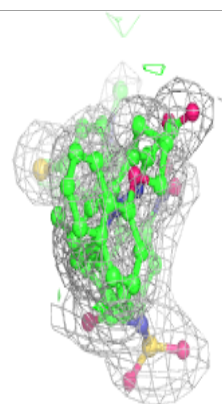
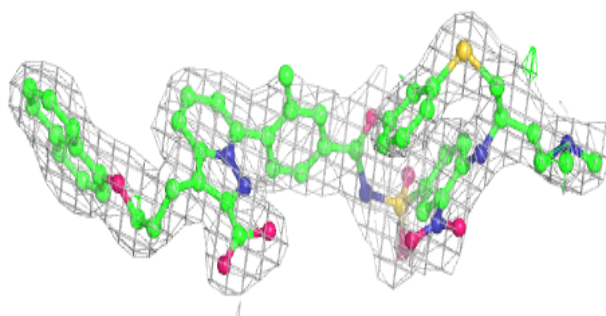
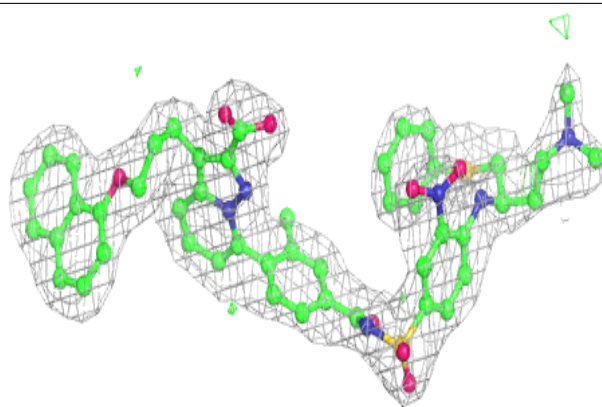
In the following table, the Atoms column lists the number of modelled atoms in the group and the number defined in the chemical component dictionary. The B-factors column lists the minimum, median, 95<sup>th</sup> percentile and maximum values of B factors of atoms in the group. The column labelled 'Q< 0.9' lists the number of atoms with occupancy less than 0.9.

Mol	Type	Chain	Res	Atoms	RSCC	RSR	B-factors(Å <sup>2</sup> )	Q<0.9
2	LC6	B	501	63/63	0.93	0.14	19,36,54,69	0
2	LC6	F	501	63/63	0.93	0.12	24,36,55,74	0
2	LC6	C	501	63/63	0.93	0.14	18,34,58,67	0
2	LC6	D	501	63/63	0.95	0.12	16,30,58,79	0
2	LC6	A	501	63/63	0.95	0.12	20,34,49,69	0
2	LC6	E	501	63/63	0.95	0.11	19,35,51,78	0

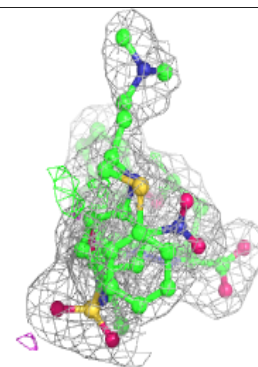
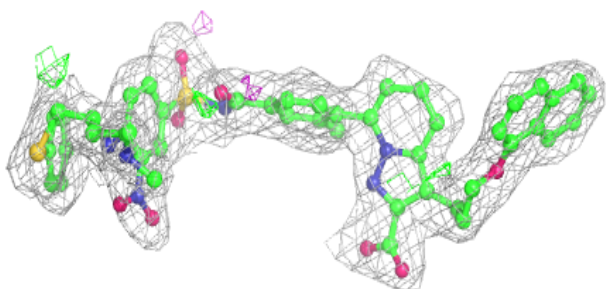
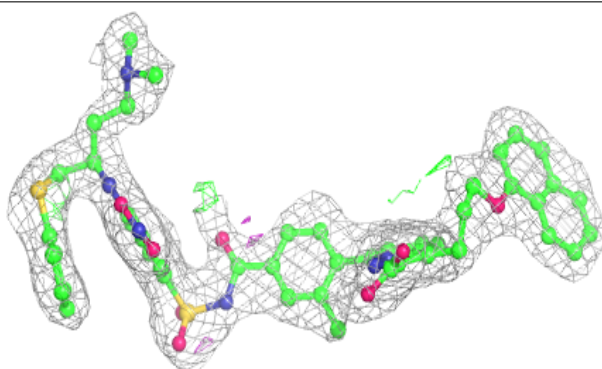
The following is a graphical depiction of the model fit to experimental electron density of all instances of the Ligand of Interest. In addition, ligands with molecular weight > 250 and outliers as shown on the geometry validation Tables will also be included. Each fit is shown from different orientation to approximate a three-dimensional view.

**Electron density around LC6 B 501:**

$2mF_o-DF_c$  (at 0.7 rmsd) in gray  
 $mF_o-DF_c$  (at 3 rmsd) in purple (negative)  
and green (positive)

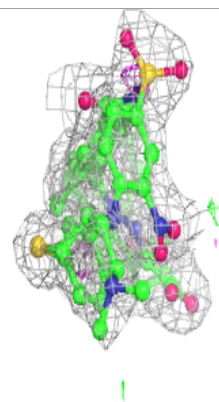
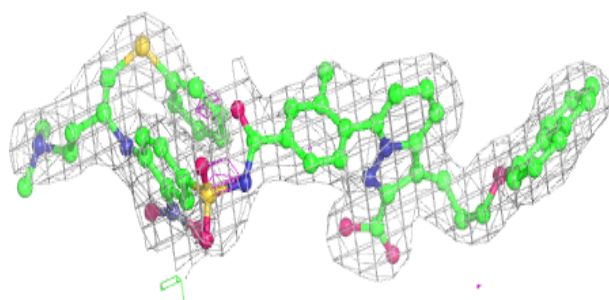
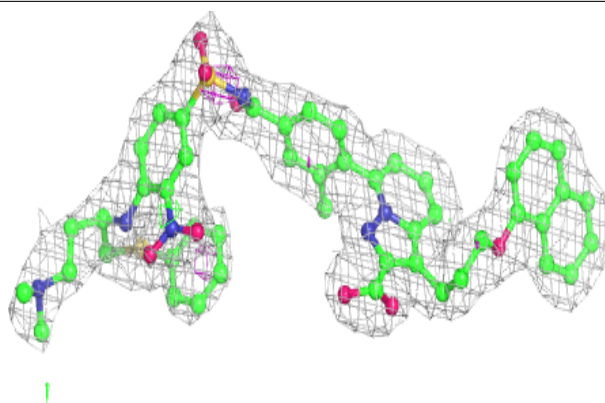
**Electron density around LC6 F 501:**

$2mF_o-DF_c$  (at 0.7 rmsd) in gray  
 $mF_o-DF_c$  (at 3 rmsd) in purple (negative)  
and green (positive)

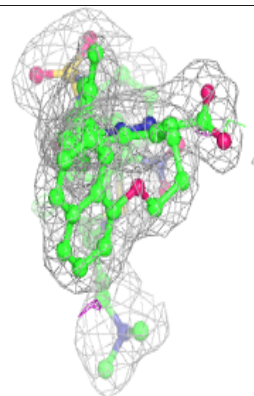
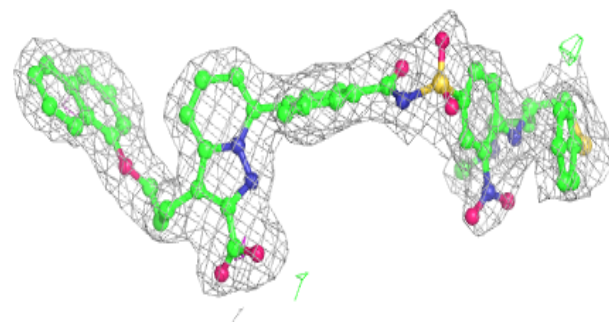
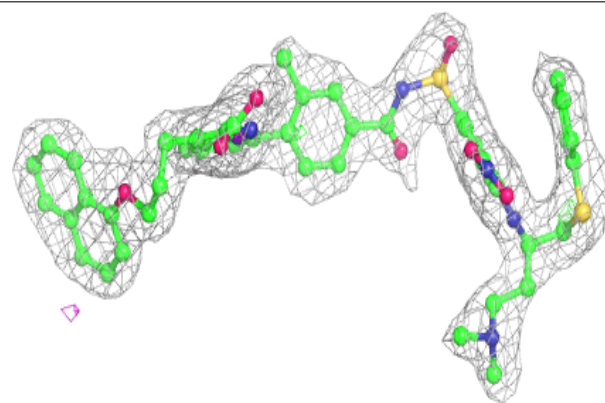


**Electron density around LC6 C 501:**

$2mF_o-DF_c$  (at 0.7 rmsd) in gray  
 $mF_o-DF_c$  (at 3 rmsd) in purple (negative)  
and green (positive)

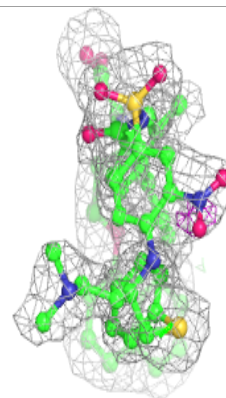
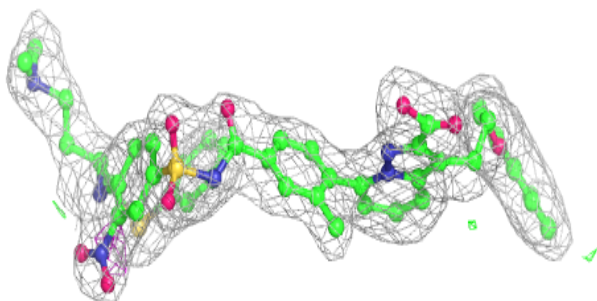
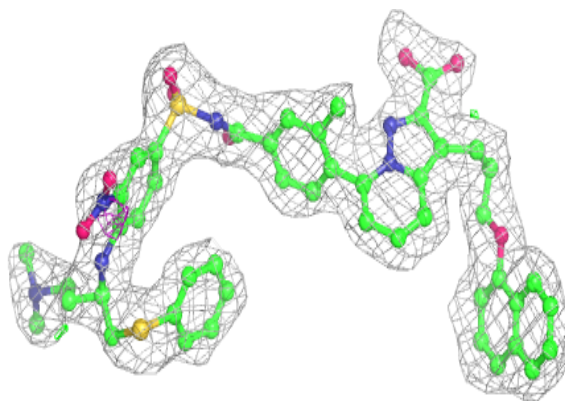
**Electron density around LC6 D 501:**

$2mF_o-DF_c$  (at 0.7 rmsd) in gray  
 $mF_o-DF_c$  (at 3 rmsd) in purple (negative)  
and green (positive)

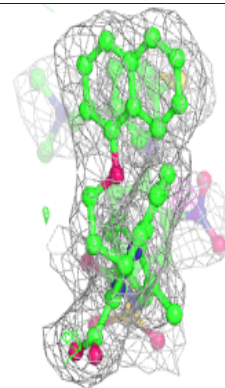
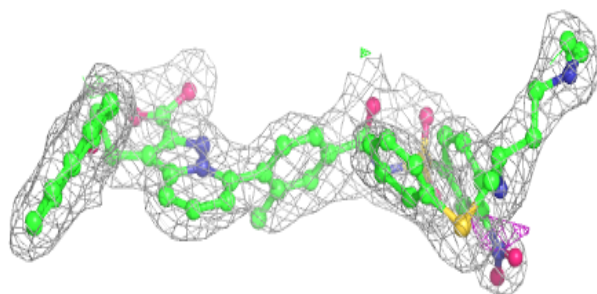
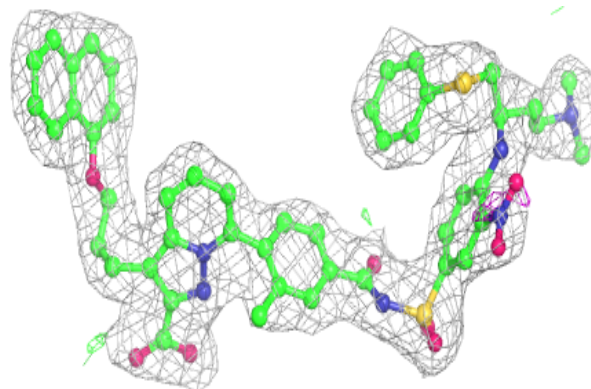


**Electron density around LC6 A 501:**

$2mF_o-DF_c$  (at 0.7 rmsd) in gray  
 $mF_o-DF_c$  (at 3 rmsd) in purple (negative)  
and green (positive)

**Electron density around LC6 E 501:**

$2mF_o-DF_c$  (at 0.7 rmsd) in gray  
 $mF_o-DF_c$  (at 3 rmsd) in purple (negative)  
and green (positive)



## 6.5 Other polymers [i](#)

There are no such residues in this entry.