



# Full wwPDB X-ray Structure Validation Report ⓘ

Mar 9, 2024 – 07:01 PM EST

PDB ID : 3VWN  
Title : Crystal structure of 6-aminohexanoate-dimer hydrolase G181D/R187G/H266  
N/D370Y mutant  
Authors : Kawashima, Y.; Shibata, N.; Negoro, S.; Higuchi, Y.  
Deposited on : 2012-08-30  
Resolution : 1.20 Å(reported)

This is a Full wwPDB X-ray Structure Validation Report for a publicly released PDB entry.

We welcome your comments at [validation@mail.wwpdb.org](mailto:validation@mail.wwpdb.org)

A user guide is available at

<https://www.wwpdb.org/validation/2017/XrayValidationReportHelp>

with specific help available everywhere you see the ⓘ symbol.

The types of validation reports are described at

<http://www.wwpdb.org/validation/2017/FAQs#types>.

---

The following versions of software and data (see [references ⓘ](#)) were used in the production of this report:

MolProbity : 4.02b-467  
Mogul : 1.8.5 (274361), CSD as541be (2020)  
Xtriage (Phenix) : 1.13  
EDS : 2.36  
Percentile statistics : 20191225.v01 (using entries in the PDB archive December 25th 2019)  
Refmac : 5.8.0158  
CCP4 : 7.0.044 (Gargrove)  
Ideal geometry (proteins) : Engh & Huber (2001)  
Ideal geometry (DNA, RNA) : Parkinson et al. (1996)  
Validation Pipeline (wwPDB-VP) : 2.36

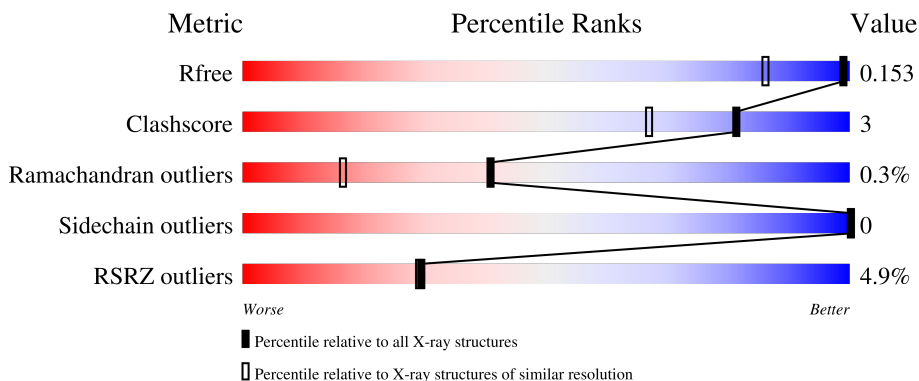
# 1 Overall quality at a glance

The following experimental techniques were used to determine the structure:

*X-RAY DIFFRACTION*

The reported resolution of this entry is 1.20 Å.

Percentile scores (ranging between 0-100) for global validation metrics of the entry are shown in the following graphic. The table shows the number of entries on which the scores are based.



Metric	Whole archive (#Entries)	Similar resolution (#Entries, resolution range(Å))
$R_{free}$	130704	1223 (1.22-1.18)
Clashscore	141614	1286 (1.22-1.18)
Ramachandran outliers	138981	1240 (1.22-1.18)
Sidechain outliers	138945	1239 (1.22-1.18)
RSRZ outliers	127900	1200 (1.22-1.18)

The table below summarises the geometric issues observed across the polymeric chains and their fit to the electron density. The red, orange, yellow and green segments of the lower bar indicate the fraction of residues that contain outliers for  $\geq 3$ , 2, 1 and 0 types of geometric quality criteria respectively. A grey segment represents the fraction of residues that are not modelled. The numeric value for each fraction is indicated below the corresponding segment, with a dot representing fractions  $\leq 5\%$ . The upper red bar (where present) indicates the fraction of residues that have poor fit to the electron density. The numeric value is given above the bar.

Mol	Chain	Length	Quality of chain
1	X	392	

The following table lists non-polymeric compounds, carbohydrate monomers and non-standard residues in protein, DNA, RNA chains that are outliers for geometric or electron-density-fit criteria:

Mol	Type	Chain	Res	Chirality	Geometry	Clashes	Electron density
2	GOL	X	403	-	X	X	-

## 2 Entry composition [i](#)

There are 6 unique types of molecules in this entry. The entry contains 3560 atoms, of which 0 are hydrogens and 0 are deuteriums.

In the tables below, the ZeroOcc column contains the number of atoms modelled with zero occupancy, the AltConf column contains the number of residues with at least one atom in alternate conformation and the Trace column contains the number of residues modelled with at most 2 atoms.

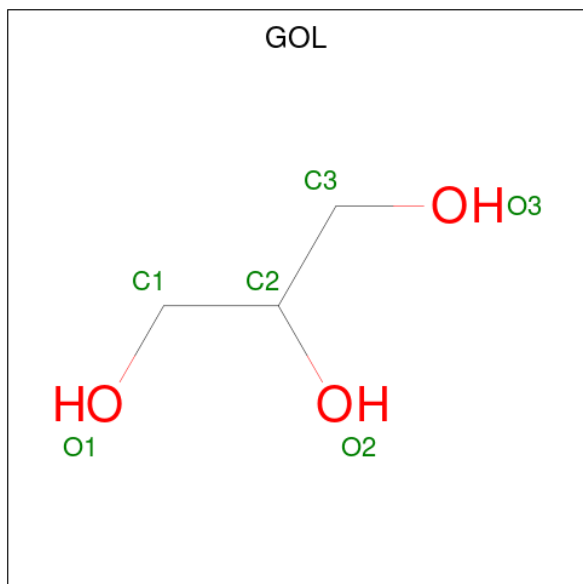
- Molecule 1 is a protein called 6-aminohexanoate-dimer hydrolase.

Mol	Chain	Residues	Atoms					ZeroOcc	AltConf	Trace
			Total	C	N	O	S			
1	X	384	3047	1912	538	586	11	0	16	0

There are 4 discrepancies between the modelled and reference sequences:

Chain	Residue	Modelled	Actual	Comment	Reference
X	181	ASP	GLY	engineered mutation	UNP P07062
X	187	GLY	ARG	engineered mutation	UNP P07062
X	266	ASN	HIS	engineered mutation	UNP P07062
X	370	TYR	ASP	engineered mutation	UNP P07062

- Molecule 2 is GLYCEROL (three-letter code: GOL) (formula: C<sub>3</sub>H<sub>8</sub>O<sub>3</sub>).



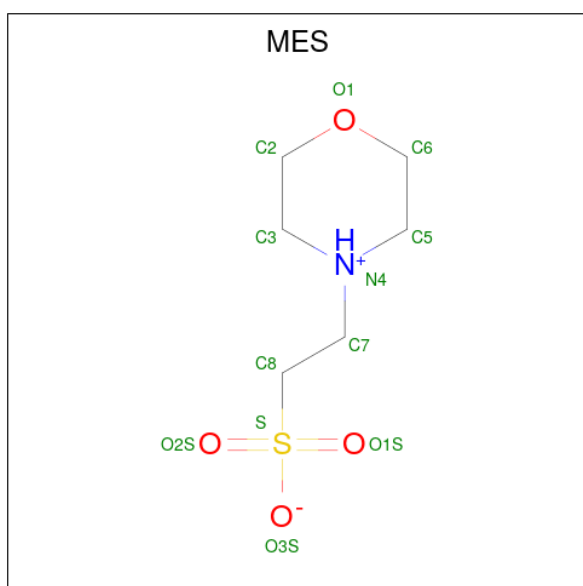
Mol	Chain	Residues	Atoms			ZeroOcc	AltConf
			Total	C	O		
2	X	1	6	3	3	0	0

*Continued on next page...*

Continued from previous page...

Mol	Chain	Residues	Atoms			ZeroOcc	AltConf
2	X	1	Total	C	O	0	0
			6	3	3		
2	X	1	Total	C	O	0	0
			6	3	3		
2	X	1	Total	C	O	0	0
			6	3	3		
2	X	1	Total	C	O	0	0
			6	3	3		

- Molecule 3 is 2-(N-MORPHOLINO)-ETHANESULFONIC ACID (three-letter code: MES) (formula: C<sub>6</sub>H<sub>13</sub>NO<sub>4</sub>S).



Mol	Chain	Residues	Atoms					ZeroOcc	AltConf
3	X	1	Total	C	N	O	S	0	0
			12	6	1	4	1		
3	X	1	Total	C	N	O	S	0	0
			12	6	1	4	1		
3	X	1	Total	C	N	O	S	0	0
			12	6	1	4	1		

- Molecule 4 is SULFATE ION (three-letter code: SO<sub>4</sub>) (formula: O<sub>4</sub>S).



Mol	Chain	Residues	Atoms	ZeroOcc	AltConf
4	X	1	Total O S 5 4 1	0	0
4	X	1	Total O S 5 4 1	0	0
4	X	1	Total O S 5 4 1	0	0

- Molecule 5 is SODIUM ION (three-letter code: NA) (formula: Na).

Mol	Chain	Residues	Atoms	ZeroOcc	AltConf
5	X	3	Total Na 3 3	0	0

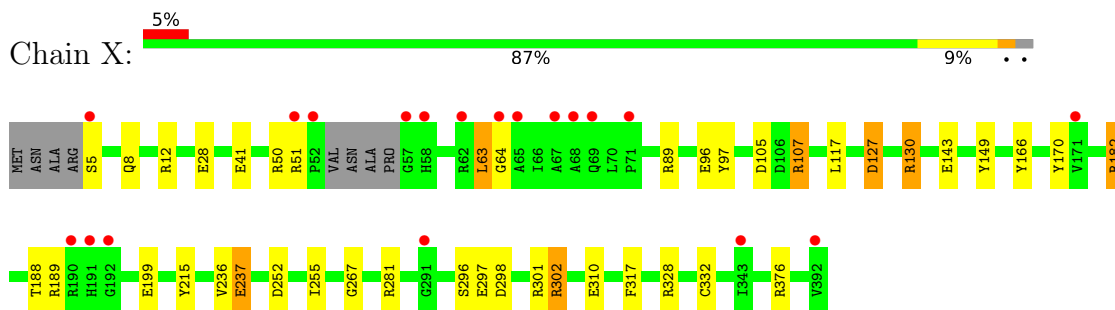
- Molecule 6 is water.

Mol	Chain	Residues	Atoms	ZeroOcc	AltConf
6	X	429	Total O 429 429	0	0

### 3 Residue-property plots [i](#)

These plots are drawn for all protein, RNA, DNA and oligosaccharide chains in the entry. The first graphic for a chain summarises the proportions of the various outlier classes displayed in the second graphic. The second graphic shows the sequence view annotated by issues in geometry and electron density. Residues are color-coded according to the number of geometric quality criteria for which they contain at least one outlier: green = 0, yellow = 1, orange = 2 and red = 3 or more. A red dot above a residue indicates a poor fit to the electron density ( $RSRZ > 2$ ). Stretches of 2 or more consecutive residues without any outlier are shown as a green connector. Residues present in the sample, but not in the model, are shown in grey.

- Molecule 1: 6-aminohexanoate-dimer hydrolase



## 4 Data and refinement statistics

Property	Value	Source
Space group	P 32 2 1	Depositor
Cell constants a, b, c, $\alpha$ , $\beta$ , $\gamma$	96.64Å 96.64Å 113.00Å 90.00° 90.00° 120.00°	Depositor
Resolution (Å)	50.00 – 1.20 37.67 – 1.20	Depositor EDS
% Data completeness (in resolution range)	99.8 (50.00-1.20) 99.8 (37.67-1.20)	Depositor EDS
$R_{merge}$	0.06	Depositor
$R_{sym}$	(Not available)	Depositor
$\langle I/\sigma(I) \rangle$ <sup>1</sup>	3.06 (at 1.20Å)	Xtrriage
Refinement program	REFMAC 5.5.0102	Depositor
R, $R_{free}$	0.130 , 0.146 0.139 , 0.153	Depositor DCC
$R_{free}$ test set	9503 reflections (5.02%)	wwPDB-VP
Wilson B-factor (Å <sup>2</sup> )	13.6	Xtrriage
Anisotropy	0.064	Xtrriage
Bulk solvent $k_{sol}$ (e/Å <sup>3</sup> ), $B_{sol}$ (Å <sup>2</sup> )	0.41 , 50.2	EDS
L-test for twinning <sup>2</sup>	$\langle  L  \rangle = 0.50$ , $\langle L^2 \rangle = 0.34$	Xtrriage
Estimated twinning fraction	0.015 for -h,-k,l	Xtrriage
$F_o, F_c$ correlation	0.98	EDS
Total number of atoms	3560	wwPDB-VP
Average B, all atoms (Å <sup>2</sup> )	21.0	wwPDB-VP

Xtrriage's analysis on translational NCS is as follows: *The largest off-origin peak in the Patterson function is 4.35% of the height of the origin peak. No significant pseudotranslation is detected.*

<sup>1</sup>Intensities estimated from amplitudes.

<sup>2</sup>Theoretical values of  $\langle |L| \rangle$ ,  $\langle L^2 \rangle$  for acentric reflections are 0.5, 0.333 respectively for untwinned datasets, and 0.375, 0.2 for perfectly twinned datasets.

## 5 Model quality [i](#)

### 5.1 Standard geometry [i](#)

Bond lengths and bond angles in the following residue types are not validated in this section: GOL, NA, MES, SO4

The Z score for a bond length (or angle) is the number of standard deviations the observed value is removed from the expected value. A bond length (or angle) with  $|Z| > 5$  is considered an outlier worth inspection. RMSZ is the root-mean-square of all Z scores of the bond lengths (or angles).

Mol	Chain	Bond lengths		Bond angles	
		RMSZ	# Z  >5	RMSZ	# Z  >5
1	X	1.34	26/3170 (0.8%)	1.27	29/4322 (0.7%)

All (26) bond length outliers are listed below:

Mol	Chain	Res	Type	Atoms	Z	Observed(Å)	Ideal(Å)
1	X	166	TYR	CD1-CE1	9.71	1.53	1.39
1	X	96	GLU	CB-CG	-8.55	1.35	1.52
1	X	297	GLU	CG-CD	-8.24	1.39	1.51
1	X	166	TYR	CG-CD1	7.61	1.49	1.39
1	X	28	GLU	CD-OE2	7.51	1.33	1.25
1	X	376	ARG	CG-CD	7.20	1.70	1.51
1	X	297	GLU	CD-OE2	7.03	1.33	1.25
1	X	166	TYR	CZ-OH	6.84	1.49	1.37
1	X	5	SER	CB-OG	6.71	1.50	1.42
1	X	8	GLN	CG-CD	6.70	1.66	1.51
1	X	199	GLU	CG-CD	6.41	1.61	1.51
1	X	237[A]	GLU	CD-OE1	-6.31	1.18	1.25
1	X	237[B]	GLU	CD-OE1	-6.31	1.18	1.25
1	X	301	ARG	CZ-NH1	6.22	1.41	1.33
1	X	127[A]	ASP	CB-CG	6.16	1.64	1.51
1	X	127[B]	ASP	CB-CG	6.16	1.64	1.51
1	X	97	TYR	CE2-CZ	6.09	1.46	1.38
1	X	117	LEU	CG-CD2	-5.97	1.29	1.51
1	X	310	GLU	CG-CD	5.97	1.60	1.51
1	X	301	ARG	NE-CZ	5.52	1.40	1.33
1	X	89	ARG	CG-CD	5.39	1.65	1.51
1	X	41	GLU	CA-CB	5.33	1.65	1.53
1	X	328	ARG	CZ-NH2	5.21	1.39	1.33
1	X	170	TYR	CD1-CE1	5.17	1.47	1.39
1	X	41	GLU	CB-CG	-5.10	1.42	1.52
1	X	170	TYR	CG-CD1	5.07	1.45	1.39



All (29) bond angle outliers are listed below:

Mol	Chain	Res	Type	Atoms	Z	Observed(°)	Ideal(°)
1	X	302[A]	ARG	NE-CZ-NH2	-15.02	112.79	120.30
1	X	302[B]	ARG	NE-CZ-NH2	-15.02	112.79	120.30
1	X	189	ARG	NE-CZ-NH1	-12.81	113.89	120.30
1	X	182	ARG	NE-CZ-NH2	-9.97	115.31	120.30
1	X	376	ARG	NE-CZ-NH1	9.24	124.92	120.30
1	X	376	ARG	NE-CZ-NH2	-8.24	116.18	120.30
1	X	328	ARG	NE-CZ-NH2	7.87	124.23	120.30
1	X	107[A]	ARG	NE-CZ-NH2	-7.77	116.41	120.30
1	X	107[B]	ARG	NE-CZ-NH2	-7.77	116.41	120.30
1	X	51	ARG	NE-CZ-NH1	-7.41	116.60	120.30
1	X	298	ASP	CB-CG-OD2	6.75	124.38	118.30
1	X	63	LEU	CB-CA-C	6.61	122.76	110.20
1	X	105	ASP	CB-CG-OD1	6.49	124.14	118.30
1	X	117	LEU	CB-CG-CD2	6.42	121.92	111.00
1	X	130[A]	ARG	NE-CZ-NH2	-6.33	117.13	120.30
1	X	130[B]	ARG	NE-CZ-NH2	-6.33	117.13	120.30
1	X	281	ARG	NE-CZ-NH2	-6.22	117.19	120.30
1	X	252	ASP	CB-CG-OD2	-6.19	112.73	118.30
1	X	302[A]	ARG	NH1-CZ-NH2	6.09	126.10	119.40
1	X	302[B]	ARG	NH1-CZ-NH2	6.09	126.10	119.40
1	X	215	TYR	CB-CG-CD1	5.91	124.55	121.00
1	X	12	ARG	CD-NE-CZ	5.80	131.71	123.60
1	X	143	GLU	OE1-CD-OE2	-5.61	116.57	123.30
1	X	189	ARG	NH1-CZ-NH2	5.43	125.38	119.40
1	X	149	TYR	CB-CG-CD1	-5.39	117.77	121.00
1	X	64	GLY	C-N-CA	5.38	135.14	121.70
1	X	50	ARG	NE-CZ-NH2	-5.34	117.63	120.30
1	X	41	GLU	CB-CA-C	-5.34	99.72	110.40
1	X	89	ARG	NE-CZ-NH1	-5.02	117.79	120.30

There are no chirality outliers.

There are no planarity outliers.

## 5.2 Too-close contacts

In the following table, the Non-H and H(model) columns list the number of non-hydrogen atoms and hydrogen atoms in the chain respectively. The H(added) column lists the number of hydrogen atoms added and optimized by MolProbity. The Clashes column lists the number of clashes within the asymmetric unit, whereas Symm-Clashes lists symmetry-related clashes.

Mol	Chain	Non-H	H(model)	H(added)	Clashes	Symm-Clashes
1	X	3047	0	2944	15	0
2	X	30	0	40	5	0
3	X	36	0	37	1	0
4	X	15	0	0	0	0
5	X	3	0	0	0	0
6	X	429	0	0	3	0
All	All	3560	0	3021	16	0

The all-atom clashscore is defined as the number of clashes found per 1000 atoms (including hydrogen atoms). The all-atom clashscore for this structure is 3.

All (16) close contacts within the same asymmetric unit are listed below, sorted by their clash magnitude.

Atom-1	Atom-2	Interatomic distance (Å)	Clash overlap (Å)
1:X:107[A]:ARG:H	2:X:403:GOL:H31	1.29	0.93
1:X:107[B]:ARG:H	2:X:403:GOL:H31	1.30	0.93
1:X:107[A]:ARG:H	2:X:403:GOL:C3	1.98	0.76
1:X:107[B]:ARG:H	2:X:403:GOL:C3	1.99	0.76
1:X:107[B]:ARG:HD2	6:X:855:HOH:O	1.86	0.75
1:X:237[B]:GLU:HG2	6:X:808:HOH:O	2.04	0.57
1:X:236[B]:VAL:HG12	1:X:255:ILE:HG21	1.94	0.50
1:X:63:LEU:HD23	1:X:63:LEU:HA	1.88	0.45
1:X:236[B]:VAL:HG12	1:X:255:ILE:CG2	2.47	0.45
1:X:127[B]:ASP:OD2	1:X:296:SER:N	2.51	0.43
1:X:332[B]:CYS:SG	6:X:727:HOH:O	2.24	0.43
1:X:317:PHE:CD1	3:X:406:MES:H61	2.54	0.42
1:X:302[B]:ARG:HA	1:X:302[B]:ARG:HD2	1.89	0.41
1:X:182:ARG:HD2	1:X:188:THR:O	2.21	0.41
1:X:130[B]:ARG:HH11	1:X:130[B]:ARG:HD3	1.68	0.40

There are no symmetry-related clashes.

## 5.3 Torsion angles [i](#)

### 5.3.1 Protein backbone [i](#)

In the following table, the Percentiles column shows the percent Ramachandran outliers of the chain as a percentile score with respect to all X-ray entries followed by that with respect to entries of similar resolution.

The Analysed column shows the number of residues for which the backbone conformation was analysed, and the total number of residues.

Mol	Chain	Analysed	Favoured	Allowed	Outliers	Percentiles
1	X	396/392 (101%)	387 (98%)	8 (2%)	1 (0%)	41 16

All (1) Ramachandran outliers are listed below:

Mol	Chain	Res	Type
1	X	267	GLY

### 5.3.2 Protein sidechains [i](#)

In the following table, the Percentiles column shows the percent sidechain outliers of the chain as a percentile score with respect to all X-ray entries followed by that with respect to entries of similar resolution.

The Analysed column shows the number of residues for which the sidechain conformation was analysed, and the total number of residues.

Mol	Chain	Analysed	Rotameric	Outliers	Percentiles
1	X	324/314 (103%)	324 (100%)	0	100 100

There are no protein residues with a non-rotameric sidechain to report.

Sometimes sidechains can be flipped to improve hydrogen bonding and reduce clashes. There are no such sidechains identified.

### 5.3.3 RNA [i](#)

There are no RNA molecules in this entry.

## 5.4 Non-standard residues in protein, DNA, RNA chains [i](#)

There are no non-standard protein/DNA/RNA residues in this entry.

### 5.5 Carbohydrates [i](#)

There are no monosaccharides in this entry.

### 5.6 Ligand geometry [i](#)

Of 14 ligands modelled in this entry, 3 are monoatomic - leaving 11 for Mogul analysis.

In the following table, the Counts columns list the number of bonds (or angles) for which Mogul statistics could be retrieved, the number of bonds (or angles) that are observed in the model and the number of bonds (or angles) that are defined in the Chemical Component Dictionary. The Link column lists molecule types, if any, to which the group is linked. The Z score for a bond length (or angle) is the number of standard deviations the observed value is removed from the expected value. A bond length (or angle) with  $|Z| > 2$  is considered an outlier worth inspection. RMSZ is the root-mean-square of all Z scores of the bond lengths (or angles).

Mol	Type	Chain	Res	Link	Bond lengths			Bond angles		
					Counts	RMSZ	# Z  > 2	Counts	RMSZ	# Z  > 2
4	SO4	X	410	-	4,4,4	1.67	1 (25%)	6,6,6	1.68	2 (33%)
4	SO4	X	409	-	4,4,4	0.28	0	6,6,6	0.60	0
4	SO4	X	411	-	4,4,4	0.29	0	6,6,6	0.70	0
2	GOL	X	402	-	5,5,5	0.65	0	5,5,5	1.14	1 (20%)
3	MES	X	408	-	12,12,12	1.15	2 (16%)	14,16,16	3.64	6 (42%)
2	GOL	X	401	-	5,5,5	1.42	1 (20%)	5,5,5	1.99	2 (40%)
2	GOL	X	403	-	5,5,5	2.48	3 (60%)	5,5,5	1.75	2 (40%)
3	MES	X	407	-	12,12,12	2.04	4 (33%)	14,16,16	3.53	7 (50%)
3	MES	X	406	-	12,12,12	1.50	2 (16%)	14,16,16	2.35	6 (42%)
2	GOL	X	404	-	5,5,5	0.62	0	5,5,5	1.57	1 (20%)
2	GOL	X	405	-	5,5,5	1.38	0	5,5,5	1.94	2 (40%)

In the following table, the Chirals column lists the number of chiral outliers, the number of chiral centers analysed, the number of these observed in the model and the number defined in the Chemical Component Dictionary. Similar counts are reported in the Torsion and Rings columns. '-' means no outliers of that kind were identified.

Mol	Type	Chain	Res	Link	Chirals	Torsions	Rings
2	GOL	X	402	-	-	1/4/4/4	-
3	MES	X	408	-	-	2/6/14/14	0/1/1/1
2	GOL	X	401	-	-	0/4/4/4	-
2	GOL	X	403	-	-	3/4/4/4	-
3	MES	X	407	-	-	2/6/14/14	0/1/1/1
3	MES	X	406	-	-	0/6/14/14	0/1/1/1
2	GOL	X	404	-	-	0/4/4/4	-
2	GOL	X	405	-	-	0/4/4/4	-

All (13) bond length outliers are listed below:

Mol	Chain	Res	Type	Atoms	Z	Observed(Å)	Ideal(Å)
3	X	407	MES	C8-S	-4.79	1.70	1.77
2	X	403	GOL	O2-C2	4.41	1.56	1.43

*Continued on next page...*

*Continued from previous page...*

Mol	Chain	Res	Type	Atoms	Z	Observed(Å)	Ideal(Å)
3	X	406	MES	C3-C2	3.21	1.62	1.50
3	X	407	MES	O2S-S	3.00	1.53	1.45
2	X	401	GOL	O3-C3	2.67	1.53	1.42
3	X	406	MES	O1-C6	2.65	1.53	1.42
3	X	408	MES	O1S-S	2.59	1.52	1.45
4	X	410	SO4	O2-S	2.50	1.59	1.46
2	X	403	GOL	O3-C3	2.44	1.52	1.42
3	X	407	MES	O1-C2	2.16	1.51	1.42
3	X	408	MES	O2S-S	2.08	1.51	1.45
2	X	403	GOL	C3-C2	2.04	1.60	1.51
3	X	407	MES	O1S-S	-2.04	1.39	1.45

All (29) bond angle outliers are listed below:

Mol	Chain	Res	Type	Atoms	Z	Observed(°)	Ideal(°)
3	X	407	MES	O3S-S-C8	-9.94	89.69	105.77
3	X	408	MES	C5-N4-C3	7.99	126.81	108.83
3	X	408	MES	O2S-S-C8	-7.95	97.35	106.92
3	X	407	MES	C5-N4-C3	4.69	119.39	108.83
3	X	408	MES	C7-N4-C5	4.58	122.95	111.23
3	X	406	MES	C2-C3-N4	-4.47	103.32	110.10
3	X	407	MES	O2S-S-C8	3.99	111.72	106.92
3	X	406	MES	C6-O1-C2	-3.82	97.13	109.89
3	X	408	MES	C6-O1-C2	3.31	120.93	109.89
3	X	406	MES	O1-C2-C3	-3.25	104.65	111.80
3	X	407	MES	C7-N4-C5	3.24	119.52	111.23
3	X	408	MES	O1S-S-C8	-3.19	103.08	106.92
2	X	401	GOL	O3-C3-C2	3.07	124.94	110.20
3	X	407	MES	O1S-S-C8	2.98	110.50	106.92
3	X	406	MES	C5-N4-C3	2.95	115.46	108.83
2	X	401	GOL	O2-C2-C3	2.72	121.09	109.12
2	X	405	GOL	O2-C2-C3	-2.66	97.41	109.12
3	X	406	MES	O1S-S-C8	-2.58	103.81	106.92
4	X	410	SO4	O3-S-O1	2.57	122.71	109.31
2	X	403	GOL	O1-C1-C2	-2.52	98.11	110.20
3	X	407	MES	C2-C3-N4	-2.41	106.44	110.10
2	X	405	GOL	C3-C2-C1	2.35	120.85	111.70
3	X	407	MES	O1-C6-C5	2.33	116.92	111.80
2	X	404	GOL	O2-C2-C3	-2.31	98.97	109.12
4	X	410	SO4	O4-S-O2	-2.30	97.29	109.31
2	X	402	GOL	C3-C2-C1	-2.18	103.23	111.70
3	X	406	MES	O3S-S-C8	2.17	109.27	105.77

*Continued on next page...*

*Continued from previous page...*

Mol	Chain	Res	Type	Atoms	Z	Observed(°)	Ideal(°)
3	X	408	MES	O1-C6-C5	2.13	116.48	111.80
2	X	403	GOL	O2-C2-C3	2.06	118.19	109.12

There are no chirality outliers.

All (8) torsion outliers are listed below:

Mol	Chain	Res	Type	Atoms
3	X	407	MES	C8-C7-N4-C5
3	X	408	MES	C8-C7-N4-C5
2	X	403	GOL	O1-C1-C2-C3
2	X	403	GOL	C1-C2-C3-O3
2	X	403	GOL	O1-C1-C2-O2
3	X	408	MES	C8-C7-N4-C3
3	X	407	MES	C7-C8-S-O2S
2	X	402	GOL	O2-C2-C3-O3

There are no ring outliers.

2 monomers are involved in 6 short contacts:

Mol	Chain	Res	Type	Clashes	Symm-Clashes
2	X	403	GOL	5	0
3	X	406	MES	1	0

## 5.7 Other polymers [i](#)

There are no such residues in this entry.

## 5.8 Polymer linkage issues [i](#)

There are no chain breaks in this entry.

## 6 Fit of model and data [i](#)

### 6.1 Protein, DNA and RNA chains [i](#)

In the following table, the column labelled ‘#RSRZ> 2’ contains the number (and percentage) of RSRZ outliers, followed by percent RSRZ outliers for the chain as percentile scores relative to all X-ray entries and entries of similar resolution. The OWAB column contains the minimum, median, 95<sup>th</sup> percentile and maximum values of the occupancy-weighted average B-factor per residue. The column labelled ‘Q< 0.9’ lists the number of (and percentage) of residues with an average occupancy less than 0.9.

Mol	Chain	Analysed	<RSRZ>	#RSRZ>2	OWAB(Å <sup>2</sup> )	Q<0.9
1	X	384/392 (97%)	0.22	19 (4%) 29 29	10, 17, 35, 60	0

All (19) RSRZ outliers are listed below:

Mol	Chain	Res	Type	RSRZ
1	X	392	VAL	8.9
1	X	65	ALA	6.9
1	X	58	HIS	6.4
1	X	71	PRO	4.8
1	X	68	ALA	4.3
1	X	191	HIS	4.2
1	X	64	GLY	3.9
1	X	67	ALA	3.4
1	X	5	SER	3.2
1	X	62	ARG	2.9
1	X	57	GLY	2.7
1	X	192	GLY	2.7
1	X	69[A]	GLN	2.4
1	X	171	VAL	2.4
1	X	190	ARG	2.3
1	X	343	ILE	2.2
1	X	291	GLY	2.1
1	X	51	ARG	2.1
1	X	52	PRO	2.0

### 6.2 Non-standard residues in protein, DNA, RNA chains [i](#)

There are no non-standard protein/DNA/RNA residues in this entry.

### 6.3 Carbohydrates [i](#)

There are no monosaccharides in this entry.

### 6.4 Ligands [i](#)

In the following table, the Atoms column lists the number of modelled atoms in the group and the number defined in the chemical component dictionary. The B-factors column lists the minimum, median, 95<sup>th</sup> percentile and maximum values of B factors of atoms in the group. The column labelled 'Q< 0.9' lists the number of atoms with occupancy less than 0.9.

Mol	Type	Chain	Res	Atoms	RSCC	RSR	B-factors(Å <sup>2</sup> )	Q<0.9
2	GOL	X	404	6/6	0.76	0.14	29,31,32,39	0
4	SO4	X	409	5/5	0.76	0.28	93,98,100,101	0
2	GOL	X	403	6/6	0.80	0.16	24,28,43,48	0
4	SO4	X	411	5/5	0.82	0.25	88,91,93,97	0
4	SO4	X	410	5/5	0.84	0.25	25,27,35,36	0
2	GOL	X	402	6/6	0.85	0.17	29,32,36,37	0
2	GOL	X	405	6/6	0.89	0.13	21,32,34,39	0
3	MES	X	406	12/12	0.90	0.20	19,23,27,28	0
3	MES	X	407	12/12	0.91	0.13	23,28,35,43	0
2	GOL	X	401	6/6	0.92	0.15	19,25,26,26	0
5	NA	X	413	1/1	0.92	0.09	47,47,47,47	0
5	NA	X	414	1/1	0.92	0.30	42,42,42,42	0
3	MES	X	408	12/12	0.93	0.27	31,48,62,65	0
5	NA	X	412	1/1	0.94	0.28	27,27,27,27	0

### 6.5 Other polymers [i](#)

There are no such residues in this entry.