



Full wwPDB X-ray Structure Validation Report ⓘ

Nov 1, 2023 – 03:06 PM EDT

PDB ID : 3UM5
Title : Double mutant (A16V+S108T) Plasmodium falciparum dihydrofolate reductase-thymidylate synthase (PfDHFR-TS-T9/94) complexed with pyrimethamine, NADPH, and dUMP
Authors : Vanichtanankul, J.; Kamchonwongpaisan, S.; Chitnumsub, P.; Yuthavong, Y.
Deposited on : 2011-11-12
Resolution : 2.40 Å(reported)

This is a Full wwPDB X-ray Structure Validation Report for a publicly released PDB entry.

We welcome your comments at validation@mail.wwpdb.org

A user guide is available at

<https://www.wwpdb.org/validation/2017/XrayValidationReportHelp>

with specific help available everywhere you see the ⓘ symbol.

The types of validation reports are described at

<http://www.wwpdb.org/validation/2017/FAQs#types>.

The following versions of software and data (see [references ⓘ](#)) were used in the production of this report:

MolProbity : 4.02b-467
Mogul : 1.8.5 (274361), CSD as541be (2020)
Xtriage (Phenix) : 1.13
EDS : 2.36
buster-report : 1.1.7 (2018)
Percentile statistics : 20191225.v01 (using entries in the PDB archive December 25th 2019)
Refmac : 5.8.0158
CCP4 : 7.0.044 (Gargrove)
Ideal geometry (proteins) : Engh & Huber (2001)
Ideal geometry (DNA, RNA) : Parkinson et al. (1996)
Validation Pipeline (wwPDB-VP) : 2.36

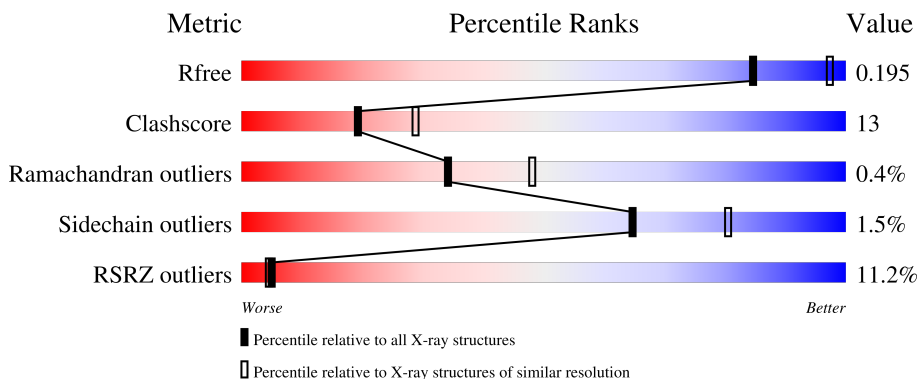
1 Overall quality at a glance

The following experimental techniques were used to determine the structure:

X-RAY DIFFRACTION

The reported resolution of this entry is 2.40 Å.

Percentile scores (ranging between 0-100) for global validation metrics of the entry are shown in the following graphic. The table shows the number of entries on which the scores are based.



Metric	Whole archive (#Entries)	Similar resolution (#Entries, resolution range(Å))
R_{free}	130704	3907 (2.40-2.40)
Clashscore	141614	4398 (2.40-2.40)
Ramachandran outliers	138981	4318 (2.40-2.40)
Sidechain outliers	138945	4319 (2.40-2.40)
RSRZ outliers	127900	3811 (2.40-2.40)

The table below summarises the geometric issues observed across the polymeric chains and their fit to the electron density. The red, orange, yellow and green segments of the lower bar indicate the fraction of residues that contain outliers for ≥ 3 , 2, 1 and 0 types of geometric quality criteria respectively. A grey segment represents the fraction of residues that are not modelled. The numeric value for each fraction is indicated below the corresponding segment, with a dot representing fractions $\leq 5\%$. The upper red bar (where present) indicates the fraction of residues that have poor fit to the electron density. The numeric value is given above the bar.

Mol	Chain	Length	Quality of chain
1	A	608	
1	B	608	

2 Entry composition [i](#)

There are 5 unique types of molecules in this entry. The entry contains 10007 atoms, of which 0 are hydrogens and 0 are deuteriums.

In the tables below, the ZeroOcc column contains the number of atoms modelled with zero occupancy, the AltConf column contains the number of residues with at least one atom in alternate conformation and the Trace column contains the number of residues modelled with at most 2 atoms.

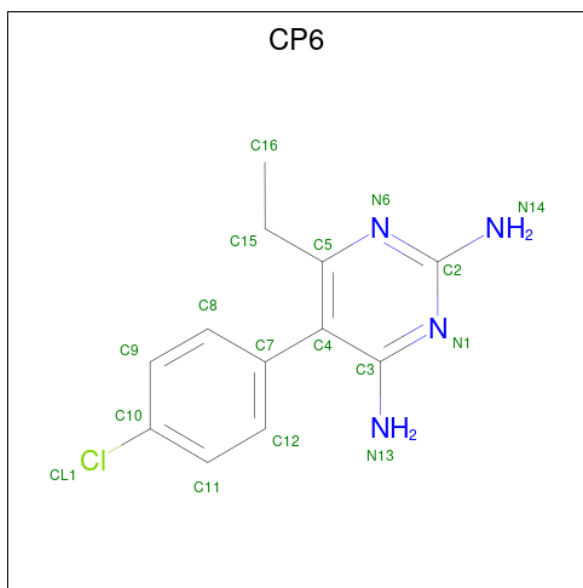
- Molecule 1 is a protein called Bifunctional dihydrofolate reductase-thymidylate synthase.

Mol	Chain	Residues	Atoms					ZeroOcc	AltConf	Trace
			Total	C	N	O	S			
1	A	546	Total 4539	C 2930	N 749	O 832	S 28	0	0	0
1	B	544	Total 4517	C 2916	N 746	O 829	S 26	0	0	0

There are 4 discrepancies between the modelled and reference sequences:

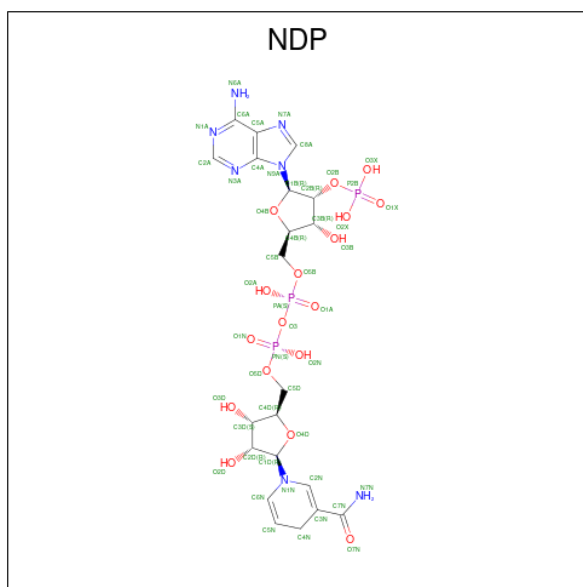
Chain	Residue	Modelled	Actual	Comment	Reference
A	16	VAL	ALA	engineered mutation	UNP A7UD81
A	108	THR	SER	engineered mutation	UNP A7UD81
B	16	VAL	ALA	engineered mutation	UNP A7UD81
B	108	THR	SER	engineered mutation	UNP A7UD81

- Molecule 2 is 5-(4-CHLORO-PHENYL)-6-ETHYL-PYRIMIDINE-2,4-DIAMINE (three-letter code: CP6) (formula: C₁₂H₁₃ClN₄).



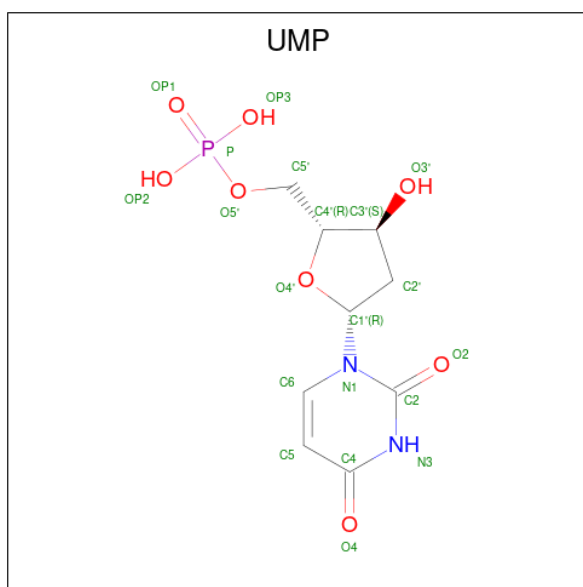
Mol	Chain	Residues	Atoms				ZeroOcc	AltConf
2	A	1	Total	C	Cl	N	0	0
			17	12	1	4		
2	B	1	Total	C	Cl	N	0	0
			17	12	1	4		

- Molecule 3 is NADPH DIHYDRO-NICOTINAMIDE-ADENINE-DINUCLEOTIDE PHOSPHATE (three-letter code: NDP) (formula: $C_{21}H_{30}N_7O_{17}P_3$).



Mol	Chain	Residues	Atoms					ZeroOcc	AltConf
3	A	1	Total	C	N	O	P	0	0
			48	21	7	17	3		
3	B	1	Total	C	N	O	P	0	0
			48	21	7	17	3		

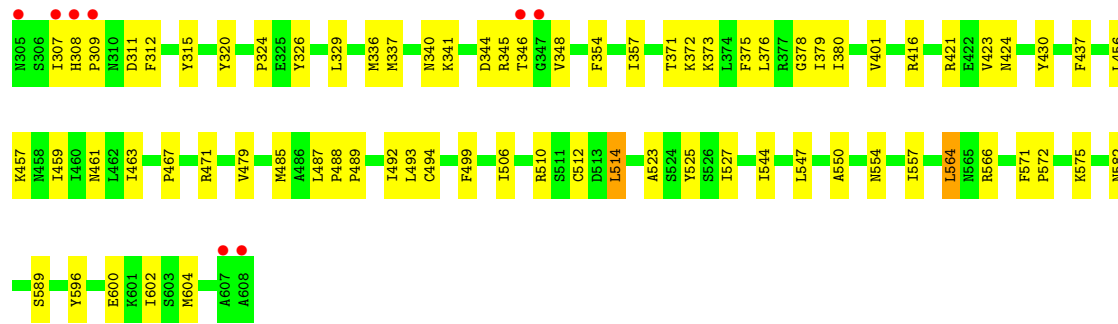
- Molecule 4 is 2'-DEOXYURIDINE 5'-MONOPHOSPHATE (three-letter code: UMP) (formula: $C_9H_{13}N_2O_8P$).



Mol	Chain	Residues	Atoms					ZeroOcc	AltConf
4	A	1	Total	C	N	O	P	0	0
			20	9	2	8	1		
4	B	1	Total	C	N	O	P	0	0
			20	9	2	8	1		

- Molecule 5 is water.

Mol	Chain	Residues	Atoms		ZeroOcc	AltConf
5	A	417	Total	O	0	0
			417	417		
5	B	364	Total	O	0	0
			364	364		



4 Data and refinement statistics

Property	Value	Source
Space group	P 21 21 21	Depositor
Cell constants a, b, c, α , β , γ	56.53Å 155.12Å 165.26Å 90.00° 90.00° 90.00°	Depositor
Resolution (Å)	28.28 – 2.40 28.27 – 2.40	Depositor EDS
% Data completeness (in resolution range)	98.6 (28.28-2.40) 98.6 (28.27-2.40)	Depositor EDS
R_{merge}	(Not available)	Depositor
R_{sym}	(Not available)	Depositor
$\langle I/\sigma(I) \rangle$ ¹	2.54 (at 2.39Å)	Xtrriage
Refinement program	CNS 1.2	Depositor
R, R_{free}	0.202 , 0.254 0.195 , 0.195	Depositor DCC
R_{free} test set	2838 reflections (4.97%)	wwPDB-VP
Wilson B-factor (Å ²)	37.6	Xtrriage
Anisotropy	0.423	Xtrriage
Bulk solvent k_{sol} (e/Å ³), B_{sol} (Å ²)	0.32 , 56.0	EDS
L-test for twinning ²	$\langle L \rangle = 0.49$, $\langle L^2 \rangle = 0.32$	Xtrriage
Estimated twinning fraction	No twinning to report.	Xtrriage
F_o, F_c correlation	0.95	EDS
Total number of atoms	10007	wwPDB-VP
Average B, all atoms (Å ²)	46.0	wwPDB-VP

Xtrriage's analysis on translational NCS is as follows: *The largest off-origin peak in the Patterson function is 3.33% of the height of the origin peak. No significant pseudotranslation is detected.*

¹Intensities estimated from amplitudes.

²Theoretical values of $\langle |L| \rangle$, $\langle L^2 \rangle$ for acentric reflections are 0.5, 0.333 respectively for untwinned datasets, and 0.375, 0.2 for perfectly twinned datasets.

5 Model quality [i](#)

5.1 Standard geometry [i](#)

Bond lengths and bond angles in the following residue types are not validated in this section: CP6, UMP, NDP

The Z score for a bond length (or angle) is the number of standard deviations the observed value is removed from the expected value. A bond length (or angle) with $|Z| > 5$ is considered an outlier worth inspection. RMSZ is the root-mean-square of all Z scores of the bond lengths (or angles).

Mol	Chain	Bond lengths		Bond angles	
		RMSZ	# Z >5	RMSZ	# Z >5
1	A	0.35	0/4644	0.61	0/6267
1	B	0.34	0/4622	0.58	1/6241 (0.0%)
All	All	0.35	0/9266	0.59	1/12508 (0.0%)

There are no bond length outliers.

All (1) bond angle outliers are listed below:

Mol	Chain	Res	Type	Atoms	Z	Observed(°)	Ideal(°)
1	B	401	VAL	N-CA-C	-5.31	96.67	111.00

There are no chirality outliers.

There are no planarity outliers.

5.2 Too-close contacts [i](#)

In the following table, the Non-H and H(model) columns list the number of non-hydrogen atoms and hydrogen atoms in the chain respectively. The H(added) column lists the number of hydrogen atoms added and optimized by MolProbity. The Clashes column lists the number of clashes within the asymmetric unit, whereas Symm-Clashes lists symmetry-related clashes.

Mol	Chain	Non-H	H(model)	H(added)	Clashes	Symm-Clashes
1	A	4539	0	4496	105	0
1	B	4517	0	4465	148	0
2	A	17	0	13	1	0
2	B	17	0	13	0	0
3	A	48	0	26	5	0
3	B	48	0	26	2	0
4	A	20	0	11	0	0
4	B	20	0	11	0	0

Continued on next page...

Continued from previous page...

Mol	Chain	Non-H	H(model)	H(added)	Clashes	Symm-Clashes
5	A	417	0	0	9	0
5	B	364	0	0	13	0
All	All	10007	0	9061	236	0

The all-atom clashscore is defined as the number of clashes found per 1000 atoms (including hydrogen atoms). The all-atom clashscore for this structure is 13.

All (236) close contacts within the same asymmetric unit are listed below, sorted by their clash magnitude.

Atom-1	Atom-2	Interatomic distance (Å)	Clash overlap (Å)
1:B:114:LYS:HE3	1:B:114:LYS:H	1.17	1.06
1:A:319:LYS:HG2	1:B:286:GLU:HG3	1.46	0.97
1:B:457:LYS:HE3	1:B:461:ASN:HD21	1.31	0.95
1:A:376:LEU:HD22	1:A:379:ILE:HD11	1.49	0.93
1:A:41:GLY:HA2	1:A:47:PRO:HD3	1.56	0.86
1:A:301:GLU:HB2	1:A:304:LYS:HB2	1.57	0.85
1:B:21:GLU:HG2	1:B:22:SER:H	1.42	0.81
1:B:118:PRO:HB2	1:B:124:ASN:ND2	1.96	0.81
1:B:41:GLY:HA2	1:B:47:PRO:HD3	1.63	0.80
1:B:98:LEU:HD23	1:B:98:LEU:H	1.51	0.75
1:B:171:GLN:HE21	1:B:175:GLU:HG3	1.52	0.74
1:B:114:LYS:H	1:B:114:LYS:CE	1.99	0.73
1:A:308:HIS:HB3	1:A:310:ASN:ND2	2.02	0.73
1:B:118:PRO:HB2	1:B:124:ASN:HD21	1.53	0.73
1:B:575:LYS:HG2	5:B:1707:HOH:O	1.89	0.71
1:A:582:ASN:HB2	1:A:585:ASP:OD2	1.92	0.69
1:B:114:LYS:HA	1:B:117:LYS:HG2	1.75	0.68
1:A:324:PRO:HG2	1:A:571:PHE:CE2	2.29	0.68
1:A:127:LEU:HD23	1:A:143:ILE:HG13	1.77	0.67
1:B:147:GLU:HA	1:B:150:ILE:HG12	1.76	0.66
1:A:112:ILE:O	1:A:117:LYS:HE3	1.95	0.66
1:A:376:LEU:HD22	1:A:379:ILE:CD1	2.25	0.65
1:B:12:TYR:CE1	1:B:180:LYS:HD3	2.31	0.65
1:A:27:LYS:N	1:A:27:LYS:HD2	2.11	0.65
1:B:127:LEU:HD23	1:B:143:ILE:HG13	1.77	0.65
1:B:376:LEU:HD22	1:B:379:ILE:HD11	1.77	0.65
1:B:197:PHE:HE1	1:B:200:ILE:HD11	1.62	0.64
1:B:201:ASN:HB3	1:B:204:GLU:HG2	1.79	0.64
1:B:114:LYS:HE3	1:B:114:LYS:N	2.02	0.63
1:A:324:PRO:HG2	1:A:571:PHE:HE2	1.64	0.63
1:B:29:ASN:HB2	1:B:32:PHE:CE1	2.34	0.63

Continued on next page...

Continued from previous page...

Atom-1	Atom-2	Interatomic distance (Å)	Clash overlap (Å)
1:B:23:LYS:NZ	1:B:23:LYS:HB3	2.13	0.62
1:B:21:GLU:HG2	1:B:22:SER:N	2.15	0.61
1:B:147:GLU:CD	1:B:147:GLU:H	2.02	0.61
1:B:227:LYS:NZ	1:B:227:LYS:HB3	2.16	0.61
1:A:411:GLU:HB2	5:A:1538:HOH:O	2.01	0.60
1:A:491:HIS:HD2	1:A:509:GLN:HG3	1.66	0.60
1:A:290:PHE:HB2	1:B:320:TYR:OH	2.01	0.59
1:B:131:LEU:HG	1:B:136:PHE:HE1	1.67	0.59
1:A:487:LEU:HD12	1:A:487:LEU:O	2.02	0.59
1:A:78:CYS:HB3	1:A:83:LYS:O	2.02	0.58
1:B:493:LEU:HD12	1:B:493:LEU:C	2.24	0.58
1:B:309:PRO:HA	1:B:312:PHE:HD2	1.68	0.58
1:B:378:GLY:HA3	5:B:1034:HOH:O	2.04	0.58
1:B:113:PRO:HG2	1:B:116:PHE:HD2	1.68	0.58
1:B:197:PHE:CE1	1:B:200:ILE:HD11	2.39	0.58
1:B:67:GLU:HG2	1:B:98:LEU:HD21	1.85	0.57
1:B:201:ASN:HD21	1:B:203:ASN:HB2	1.69	0.57
1:A:304:LYS:NZ	1:A:309:PRO:HG3	2.19	0.57
1:B:604:MET:HE3	5:B:1231:HOH:O	2.05	0.57
1:B:506:ILE:HG12	1:B:544:ILE:HB	1.85	0.57
1:B:10:ASP:OD2	1:B:73:LEU:HD22	2.03	0.57
1:B:336:MET:HE3	1:B:557:ILE:HG23	1.87	0.57
1:B:299:LYS:HG3	1:B:300:GLU:OE2	2.04	0.56
1:B:77:ARG:O	1:B:81:LEU:HG	2.04	0.56
1:A:299:LYS:HG3	1:A:299:LYS:O	2.04	0.56
1:A:26:GLY:C	1:A:27:LYS:HD2	2.26	0.56
1:A:402:ARG:HG2	1:A:402:ARG:HH11	1.71	0.56
1:A:23:LYS:HD2	1:A:30:GLU:OE1	2.06	0.56
1:A:109:TRP:O	1:A:117:LYS:HE2	2.06	0.56
1:A:23:LYS:HB2	1:A:23:LYS:NZ	2.21	0.56
1:B:512:CYS:SG	1:B:547:LEU:HD22	2.45	0.55
1:A:305:ASN:N	1:A:305:ASN:HD22	2.04	0.55
1:B:523:ALA:O	1:B:527:ILE:HG13	2.06	0.55
1:B:26:GLY:O	1:B:27:LYS:HB2	2.07	0.55
1:B:179:ILE:HB	1:B:205:TYR:OH	2.07	0.55
1:B:67:GLU:HA	1:B:98:LEU:HD21	1.89	0.54
1:A:506:ILE:HG12	1:A:544:ILE:HB	1.89	0.54
1:B:4:GLN:HG3	1:B:7:ASP:OD2	2.08	0.54
1:A:210:VAL:HB	5:A:1119:HOH:O	2.07	0.54
1:B:589:SER:HB3	5:B:1571:HOH:O	2.08	0.54
1:B:299:LYS:HG3	1:B:300:GLU:CD	2.28	0.54

Continued on next page...

Continued from previous page...

Atom-1	Atom-2	Interatomic distance (Å)	Clash overlap (Å)
1:B:457:LYS:HD2	5:B:1539:HOH:O	2.07	0.54
1:B:102:VAL:HG23	1:B:102:VAL:O	2.08	0.53
1:B:324:PRO:HB2	1:B:571:PHE:HE2	1.73	0.53
1:A:319:LYS:HG2	1:B:286:GLU:CG	2.31	0.53
1:A:354:PHE:CE2	1:B:506:ILE:HG13	2.43	0.53
1:B:308:HIS:HB2	1:B:311:ASP:OD2	2.09	0.53
1:A:447:ASN:OD1	1:A:449:GLU:HG2	2.09	0.52
1:A:202:GLU:HG2	5:A:1410:HOH:O	2.07	0.52
1:A:307:ILE:HD12	1:A:336:MET:O	2.10	0.52
1:B:329:LEU:HD22	1:B:564:LEU:HD12	1.90	0.52
1:A:66:ASN:ND2	1:A:69:LYS:HE3	2.25	0.52
1:A:301:GLU:OE1	1:A:337:MET:HB3	2.10	0.52
1:B:171:GLN:HE21	1:B:175:GLU:CG	2.19	0.52
1:B:457:LYS:HE3	1:B:461:ASN:ND2	2.11	0.52
1:B:128:SER:HB2	3:B:710:NDP:O3X	2.09	0.52
1:B:214:TYR:O	1:B:220:THR:HA	2.09	0.52
1:B:572:PRO:HB3	1:B:596:TYR:HA	1.92	0.52
1:A:397:LEU:HD21	1:A:405:GLU:HB2	1.92	0.51
1:B:29:ASN:HD22	1:B:32:PHE:HE1	1.57	0.51
1:A:83:LYS:O	1:A:84:GLU:HG3	2.10	0.51
1:A:284:ASP:HB3	1:B:69:LYS:HE2	1.93	0.51
1:A:309:PRO:HA	1:A:312:PHE:HD2	1.74	0.51
1:B:376:LEU:O	1:B:380:ILE:HG13	2.11	0.51
1:B:600:GLU:HG3	5:B:1140:HOH:O	2.10	0.51
1:B:67:GLU:HG2	1:B:98:LEU:CD2	2.41	0.51
1:B:22:SER:HB2	1:B:25:GLU:O	2.10	0.50
1:B:423:VAL:O	1:B:424:ASN:HB2	2.10	0.50
1:A:41:GLY:N	1:A:195:VAL:HG23	2.26	0.49
1:A:335:ILE:HD12	1:A:514:LEU:CD1	2.41	0.49
1:B:141:TYR:CD1	1:B:141:TYR:N	2.79	0.49
1:B:186:ARG:HB2	1:B:222:ASP:OD1	2.12	0.49
1:B:373:LYS:HE2	1:B:375:PHE:CE1	2.48	0.49
1:A:41:GLY:H	1:A:195:VAL:HG23	1.77	0.49
1:B:312:PHE:HB3	1:B:315:TYR:HB3	1.94	0.49
1:B:70:TYR:CG	1:B:98:LEU:HD13	2.47	0.49
1:A:20:VAL:HG21	1:A:38:ARG:HH11	1.77	0.49
1:A:165:GLY:HA3	3:A:610:NDP:C5N	2.43	0.49
1:B:287:GLU:HB3	5:B:1562:HOH:O	2.13	0.49
1:A:296:ASN:C	1:A:298:GLU:H	2.16	0.48
1:A:513:ASP:OD2	1:A:516:LEU:HB2	2.12	0.48
1:A:165:GLY:HA3	3:A:610:NDP:H5N	1.96	0.48

Continued on next page...

Continued from previous page...

Atom-1	Atom-2	Interatomic distance (Å)	Clash overlap (Å)
1:A:572:PRO:HB3	1:A:596:TYR:HA	1.94	0.48
1:B:28:LYS:NZ	1:B:28:LYS:HB3	2.28	0.48
1:B:23:LYS:HB3	1:B:23:LYS:HZ3	1.79	0.48
1:B:301:GLU:HB3	1:B:337:MET:O	2.13	0.48
1:B:113:PRO:CG	1:B:116:PHE:HD2	2.26	0.48
1:A:340:ASN:HB3	1:B:499:PHE:CE1	2.48	0.48
1:A:493:LEU:CD2	1:B:492:ILE:HG21	2.43	0.48
1:A:284:ASP:HB3	1:B:69:LYS:CE	2.43	0.48
1:A:221:LEU:N	1:A:221:LEU:HD23	2.28	0.48
1:B:201:ASN:HD22	1:B:204:GLU:HG2	1.79	0.48
1:A:106:ARG:HB2	1:A:128:SER:HB2	1.95	0.47
1:A:376:LEU:O	1:A:380:ILE:HG13	2.14	0.47
1:B:182:ILE:HB	1:B:226:TYR:HB2	1.95	0.47
1:B:357:ILE:HG23	1:B:357:ILE:O	2.14	0.47
1:A:506:ILE:HG13	1:B:354:PHE:CE2	2.49	0.47
1:B:114:LYS:HA	1:B:117:LYS:CG	2.43	0.47
1:B:73:LEU:HA	1:B:76:LYS:HE3	1.97	0.47
1:B:582:ASN:HB2	5:B:1524:HOH:O	2.15	0.47
1:B:57:TYR:O	1:B:61:VAL:HG23	2.14	0.47
1:B:101:VAL:HG22	1:B:123:ILE:HB	1.97	0.47
1:A:109:TRP:CE3	1:A:126:ILE:HD11	2.50	0.47
1:A:499:PHE:CE1	1:B:340:ASN:HB3	2.50	0.47
1:B:554:ASN:HB2	5:B:1151:HOH:O	2.15	0.47
1:B:81:LEU:O	1:B:82:ASN:HB3	2.14	0.47
1:B:346:THR:C	1:B:348:VAL:H	2.18	0.47
1:A:335:ILE:HD12	1:A:514:LEU:HD11	1.96	0.46
1:A:400:ASN:OD1	1:A:402:ARG:NH2	2.48	0.46
1:B:85:THR:HG23	1:B:85:THR:O	2.14	0.46
1:A:100:ASN:OD1	1:A:159:TYR:HB3	2.16	0.46
1:A:375:PHE:N	1:A:375:PHE:CD1	2.84	0.46
1:B:171:GLN:NE2	1:B:175:GLU:HG3	2.26	0.46
1:A:7:ASP:OD1	1:A:180:LYS:HE3	2.15	0.46
1:A:305:ASN:N	1:A:305:ASN:ND2	2.63	0.46
1:A:345:ARG:HG2	1:A:345:ARG:HH11	1.80	0.46
1:B:98:LEU:H	1:B:98:LEU:CD2	2.25	0.45
1:B:137:ASP:HB2	1:B:140:VAL:HG23	1.97	0.45
1:A:499:PHE:CZ	1:B:340:ASN:HB3	2.51	0.45
1:B:127:LEU:O	3:B:710:NDP:H1B	2.15	0.45
1:A:200:ILE:HG13	5:A:1211:HOH:O	2.16	0.45
1:B:131:LEU:HG	1:B:136:PHE:CE1	2.49	0.45
1:A:470:ARG:HH12	1:B:344:ASP:CB	2.29	0.45

Continued on next page...

Continued from previous page...

Atom-1	Atom-2	Interatomic distance (Å)	Clash overlap (Å)
1:A:12:TYR:CE2	1:A:160:LYS:HD3	2.52	0.45
1:A:58:PHE:CZ	2:A:609:CP6:H12	2.52	0.45
1:A:567:ILE:HA	1:A:568:PRO:HD3	1.84	0.45
1:A:377:ARG:NH1	5:A:1726:HOH:O	2.49	0.45
1:A:586:PHE:HB2	5:A:1059:HOH:O	2.17	0.45
1:A:510:ARG:HG3	1:A:511:SER:N	2.32	0.44
1:B:227:LYS:C	1:B:227:LYS:HD2	2.38	0.44
1:A:492:ILE:HG21	1:B:493:LEU:CD2	2.47	0.44
1:A:488:PRO:HG3	1:B:471:ARG:HD3	1.99	0.44
1:B:376:LEU:HD22	1:B:379:ILE:CD1	2.46	0.44
1:A:214:TYR:O	1:A:220:THR:HA	2.18	0.44
1:A:437:PHE:CD1	1:B:479:VAL:HB	2.52	0.44
1:B:201:ASN:HB3	1:B:204:GLU:CG	2.47	0.44
1:A:144:ASN:C	1:A:144:ASN:HD22	2.20	0.44
1:A:492:ILE:HD11	1:A:510:ARG:HD3	1.98	0.44
1:B:459:ILE:O	1:B:463:ILE:HG13	2.18	0.44
1:B:83:LYS:HG2	1:B:84:GLU:N	2.33	0.44
1:B:566:ARG:NH1	1:B:602:ILE:HD11	2.33	0.44
1:B:227:LYS:HD2	1:B:228:LYS:O	2.17	0.43
1:A:127:LEU:O	3:A:610:NDP:H1B	2.18	0.43
1:B:416:ARG:NH2	1:B:488:PRO:HD3	2.33	0.43
1:A:342:GLN:HG2	5:A:1129:HOH:O	2.18	0.43
1:B:467:PRO:HD2	5:B:1587:HOH:O	2.18	0.43
1:B:73:LEU:O	1:B:77:ARG:HG3	2.18	0.43
1:A:127:LEU:CD2	1:A:143:ILE:HG13	2.47	0.43
1:B:98:LEU:HD23	1:B:98:LEU:N	2.27	0.43
1:B:227:LYS:HB3	1:B:227:LYS:HZ3	1.82	0.43
1:B:312:PHE:CE1	1:B:564:LEU:HD23	2.53	0.43
1:B:14:ILE:HD13	1:B:58:PHE:HD1	1.84	0.43
1:B:78:CYS:SG	1:B:85:THR:HG22	2.58	0.43
1:B:171:GLN:NE2	1:B:175:GLU:CG	2.80	0.43
1:A:304:LYS:HG3	1:A:337:MET:CE	2.49	0.43
1:A:331:ILE:HG22	1:A:514:LEU:HD11	2.01	0.43
1:A:459:ILE:HG13	1:A:460:ILE:N	2.34	0.43
1:B:201:ASN:ND2	1:B:203:ASN:HB2	2.32	0.43
1:A:27:LYS:C	1:A:29:ASN:H	2.22	0.43
1:B:307:ILE:HD12	1:B:336:MET:HE2	2.01	0.43
1:B:326:TYR:HA	1:B:329:LEU:HB2	1.99	0.43
1:B:456:LEU:O	1:B:459:ILE:HG13	2.19	0.43
1:A:172:GLU:OE2	3:A:610:NDP:N7A	2.51	0.42
1:A:402:ARG:HG2	1:A:402:ARG:NH1	2.33	0.42

Continued on next page...

Continued from previous page...

Atom-1	Atom-2	Interatomic distance (Å)	Clash overlap (Å)
5:A:1515:HOH:O	1:B:345:ARG:HD2	2.19	0.42
1:A:23:LYS:HB2	1:A:23:LYS:HZ2	1.83	0.42
1:A:208:ILE:HD13	1:A:227:LYS:HB2	2.01	0.42
1:A:479:VAL:HB	1:B:437:PHE:CD1	2.54	0.42
1:B:494:CYS:SG	1:B:525:TYR:CE2	3.12	0.42
1:A:350:VAL:HG12	1:A:553:TYR:HA	2.01	0.42
1:A:493:LEU:C	1:A:493:LEU:HD12	2.40	0.42
1:B:485:MET:SD	1:B:489:PRO:HD3	2.59	0.42
1:A:514:LEU:CD2	1:A:518:VAL:HG21	2.50	0.42
1:B:371:THR:O	1:B:372:LYS:HB3	2.19	0.42
1:B:493:LEU:HD12	1:B:493:LEU:O	2.20	0.42
1:A:382:GLU:O	1:A:385:TRP:HB3	2.20	0.41
1:B:341:LYS:HE3	5:B:1752:HOH:O	2.20	0.41
1:B:153:LEU:C	1:B:155:LYS:H	2.24	0.41
1:B:298:GLU:OE1	1:B:298:GLU:HA	2.20	0.41
1:A:480:LYS:HD3	5:A:1115:HOH:O	2.19	0.41
1:B:42:ASN:HA	1:B:194:ASP:OD2	2.20	0.41
1:B:4:GLN:O	1:B:8:VAL:HG23	2.21	0.41
1:B:104:MET:HA	1:B:165:GLY:O	2.20	0.41
1:A:423:VAL:O	1:A:424:ASN:HB2	2.20	0.41
1:A:514:LEU:HD23	1:A:518:VAL:HG21	2.03	0.41
1:B:133:LYS:HD3	1:B:133:LYS:N	2.35	0.41
1:B:97:LYS:HG3	1:B:97:LYS:O	2.21	0.41
1:A:8:VAL:HA	1:A:76:LYS:HD3	2.03	0.41
1:B:21:GLU:CG	1:B:22:SER:H	2.23	0.41
1:A:23:LYS:NZ	1:A:23:LYS:CB	2.84	0.41
1:A:40:LEU:O	3:A:610:NDP:H2N	2.20	0.41
1:A:309:PRO:HA	1:A:312:PHE:CD2	2.54	0.41
1:A:470:ARG:HH12	1:B:344:ASP:HB2	1.86	0.41
1:A:575:LYS:HD3	1:A:575:LYS:HA	1.79	0.41
1:B:66:ASN:OD1	1:B:69:LYS:HG3	2.20	0.41
1:B:69:LYS:HD2	1:B:159:TYR:OH	2.21	0.41
1:B:17:CYS:HB2	1:B:184:PHE:CZ	2.55	0.41
1:B:62:THR:O	1:B:122:ARG:HG2	2.21	0.41
1:B:492:ILE:HD11	1:B:510:ARG:HD3	2.03	0.40
1:B:421:ARG:NH2	5:B:1498:HOH:O	2.51	0.40
1:A:304:LYS:HZ2	1:A:309:PRO:HG3	1.86	0.40
1:A:377:ARG:NH2	1:A:399:LYS:O	2.53	0.40
1:B:152:LEU:HD11	1:B:156:LEU:HD11	2.04	0.40
1:B:50:CYS:HA	5:B:1623:HOH:O	2.20	0.40
1:B:514:LEU:HD11	1:B:550:ALA:HB1	2.04	0.40

There are no symmetry-related clashes.

5.3 Torsion angles [i](#)

5.3.1 Protein backbone [i](#)

In the following table, the Percentiles column shows the percent Ramachandran outliers of the chain as a percentile score with respect to all X-ray entries followed by that with respect to entries of similar resolution.

The Analysed column shows the number of residues for which the backbone conformation was analysed, and the total number of residues.

Mol	Chain	Analysed	Favoured	Allowed	Outliers	Percentiles	
1	A	540/608 (89%)	508 (94%)	30 (6%)	2 (0%)	34	48
1	B	538/608 (88%)	490 (91%)	46 (9%)	2 (0%)	34	48
All	All	1078/1216 (89%)	998 (93%)	76 (7%)	4 (0%)	34	48

All (4) Ramachandran outliers are listed below:

Mol	Chain	Res	Type
1	B	430	TYR
1	A	21	GLU
1	A	430	TYR
1	B	152	LEU

5.3.2 Protein sidechains [i](#)

In the following table, the Percentiles column shows the percent sidechain outliers of the chain as a percentile score with respect to all X-ray entries followed by that with respect to entries of similar resolution.

The Analysed column shows the number of residues for which the sidechain conformation was analysed, and the total number of residues.

Mol	Chain	Analysed	Rotameric	Outliers	Percentiles	
1	A	510/571 (89%)	506 (99%)	4 (1%)	81	91
1	B	507/571 (89%)	496 (98%)	11 (2%)	52	71
All	All	1017/1142 (89%)	1002 (98%)	15 (2%)	65	80

All (15) residues with a non-rotameric sidechain are listed below:

Mol	Chain	Res	Type
1	A	50	CYS
1	A	144	ASN
1	A	310	ASN
1	A	375	PHE
1	B	28	LYS
1	B	66	ASN
1	B	76	LYS
1	B	114	LYS
1	B	137	ASP
1	B	141	TYR
1	B	148	ASP
1	B	227	LYS
1	B	487	LEU
1	B	514	LEU
1	B	564	LEU

Sometimes sidechains can be flipped to improve hydrogen bonding and reduce clashes. All (21) such sidechains are listed below:

Mol	Chain	Res	Type
1	A	99	GLN
1	A	144	ASN
1	A	157	ASN
1	A	305	ASN
1	A	310	ASN
1	A	316	ASN
1	A	394	ASN
1	A	424	ASN
1	A	554	ASN
1	A	582	ASN
1	B	29	ASN
1	B	99	GLN
1	B	124	ASN
1	B	171	GLN
1	B	201	ASN
1	B	203	ASN
1	B	316	ASN
1	B	394	ASN
1	B	424	ASN
1	B	461	ASN
1	B	554	ASN

5.3.3 RNA [i](#)

There are no RNA molecules in this entry.

5.4 Non-standard residues in protein, DNA, RNA chains [i](#)

There are no non-standard protein/DNA/RNA residues in this entry.

5.5 Carbohydrates [i](#)

There are no monosaccharides in this entry.

5.6 Ligand geometry [i](#)

6 ligands are modelled in this entry.

In the following table, the Counts columns list the number of bonds (or angles) for which Mogul statistics could be retrieved, the number of bonds (or angles) that are observed in the model and the number of bonds (or angles) that are defined in the Chemical Component Dictionary. The Link column lists molecule types, if any, to which the group is linked. The Z score for a bond length (or angle) is the number of standard deviations the observed value is removed from the expected value. A bond length (or angle) with $|Z| > 2$ is considered an outlier worth inspection. RMSZ is the root-mean-square of all Z scores of the bond lengths (or angles).

Mol	Type	Chain	Res	Link	Bond lengths			Bond angles		
					Counts	RMSZ	# Z > 2	Counts	RMSZ	# Z > 2
4	UMP	A	611	-	21,21,21	1.78	7 (33%)	31,31,31	1.91	10 (32%)
4	UMP	B	711	-	21,21,21	1.74	5 (23%)	31,31,31	1.96	12 (38%)
2	CP6	A	609	-	17,18,18	3.70	12 (70%)	21,25,25	2.95	5 (23%)
3	NDP	B	710	-	45,52,52	1.43	7 (15%)	53,80,80	1.54	8 (15%)
3	NDP	A	610	-	45,52,52	1.35	5 (11%)	53,80,80	1.72	7 (13%)
2	CP6	B	709	-	17,18,18	4.01	12 (70%)	21,25,25	3.14	7 (33%)

In the following table, the Chirals column lists the number of chiral outliers, the number of chiral centers analysed, the number of these observed in the model and the number defined in the Chemical Component Dictionary. Similar counts are reported in the Torsion and Rings columns. '-' means no outliers of that kind were identified.

Mol	Type	Chain	Res	Link	Chirals	Torsions	Rings
4	UMP	A	611	-	-	1/10/22/22	0/2/2/2
4	UMP	B	711	-	-	1/10/22/22	0/2/2/2
2	CP6	A	609	-	-	0/2/6/6	0/2/2/2

Continued on next page...

Continued from previous page...

Mol	Type	Chain	Res	Link	Chirals	Torsions	Rings
3	NDP	B	710	-	-	3/30/77/77	0/5/5/5
3	NDP	A	610	-	-	4/30/77/77	0/5/5/5
2	CP6	B	709	-	-	1/2/6/6	0/2/2/2

All (48) bond length outliers are listed below:

Mol	Chain	Res	Type	Atoms	Z	Observed(Å)	Ideal(Å)
2	B	709	CP6	C5-C4	8.71	1.56	1.43
2	A	609	CP6	C5-C4	7.71	1.54	1.43
2	B	709	CP6	C9-C10	6.20	1.49	1.38
2	A	609	CP6	C9-C10	5.88	1.49	1.38
2	B	709	CP6	C5-N6	5.70	1.39	1.32
2	A	609	CP6	C5-N6	5.18	1.38	1.32
3	B	710	NDP	C6N-N1N	4.95	1.49	1.37
2	B	709	CP6	C12-C11	4.80	1.46	1.36
2	A	609	CP6	C10-CL1	-4.61	1.64	1.74
3	A	610	NDP	C6N-N1N	4.50	1.48	1.37
2	B	709	CP6	C8-C9	4.36	1.45	1.36
2	A	609	CP6	C12-C11	4.21	1.45	1.36
4	B	711	UMP	O4'-C1'	4.12	1.51	1.42
2	B	709	CP6	C3-N1	3.94	1.41	1.33
4	A	611	UMP	O4'-C1'	3.70	1.50	1.42
2	A	609	CP6	C12-C7	3.69	1.50	1.41
2	B	709	CP6	C12-C7	3.65	1.50	1.41
2	A	609	CP6	C2-N6	3.59	1.41	1.35
2	B	709	CP6	C10-CL1	-3.45	1.67	1.74
4	A	611	UMP	C2-N1	3.43	1.43	1.38
2	A	609	CP6	C8-C9	3.26	1.43	1.36
2	B	709	CP6	C2-N1	3.23	1.41	1.35
2	B	709	CP6	C2-N6	3.22	1.41	1.35
2	A	609	CP6	C3-N1	3.20	1.39	1.33
2	B	709	CP6	C2-N14	3.18	1.40	1.33
2	A	609	CP6	C2-N14	3.16	1.40	1.33
2	B	709	CP6	C11-C10	2.85	1.43	1.38
3	B	710	NDP	C4A-N3A	2.77	1.39	1.35
4	B	711	UMP	C2-N1	2.75	1.42	1.38
2	A	609	CP6	C11-C10	2.72	1.43	1.38
4	A	611	UMP	P-OP3	-2.65	1.44	1.54
3	B	710	NDP	C7N-C3N	2.62	1.54	1.48
3	A	610	NDP	C7N-C3N	2.52	1.54	1.48
4	A	611	UMP	C4-N3	2.50	1.43	1.38
4	B	711	UMP	P-OP3	-2.46	1.45	1.54

Continued on next page...

Continued from previous page...

Mol	Chain	Res	Type	Atoms	Z	Observed(Å)	Ideal(Å)
4	A	611	UMP	C6-C5	2.34	1.40	1.35
4	B	711	UMP	C4-N3	2.33	1.42	1.38
2	A	609	CP6	C2-N1	2.32	1.39	1.35
3	A	610	NDP	C4A-N3A	2.31	1.38	1.35
4	A	611	UMP	P-OP1	-2.21	1.43	1.50
3	A	610	NDP	C8A-N7A	2.16	1.38	1.34
3	B	710	NDP	C5D-C4D	2.13	1.58	1.51
4	A	611	UMP	P-OP2	-2.12	1.46	1.54
3	B	710	NDP	C8A-N7A	2.11	1.38	1.34
3	A	610	NDP	C5D-C4D	2.11	1.58	1.51
4	B	711	UMP	C6-C5	2.06	1.39	1.35
3	B	710	NDP	PA-O2A	-2.04	1.45	1.55
3	B	710	NDP	O4D-C1D	2.03	1.46	1.42

All (49) bond angle outliers are listed below:

Mol	Chain	Res	Type	Atoms	Z	Observed(°)	Ideal(°)
2	B	709	CP6	C5-C4-C3	-12.04	112.57	123.34
2	A	609	CP6	C5-C4-C3	-11.40	113.14	123.34
3	B	710	NDP	N3A-C2A-N1A	-5.99	119.32	128.68
3	A	610	NDP	N3A-C2A-N1A	-5.84	119.55	128.68
3	A	610	NDP	C1D-N1N-C2N	-5.05	112.71	121.11
4	B	711	UMP	O4'-C1'-N1	4.46	115.83	107.86
2	B	709	CP6	C2-N6-C5	4.40	119.91	116.24
4	A	611	UMP	C1'-N1-C6	-4.25	113.16	121.55
4	B	711	UMP	C1'-N1-C6	-4.25	113.16	121.55
4	A	611	UMP	O4'-C1'-N1	4.21	115.39	107.86
3	A	610	NDP	O2B-C2B-C3B	-4.15	96.65	111.68
3	A	610	NDP	C1B-N9A-C4A	-3.68	120.18	126.64
3	B	710	NDP	O4B-C1B-C2B	-3.57	100.40	106.59
2	A	609	CP6	C2-N6-C5	3.47	119.13	116.24
2	A	609	CP6	C9-C10-CL1	-3.33	114.15	119.35
4	B	711	UMP	C2'-C1'-N1	3.26	121.28	113.77
2	A	609	CP6	C11-C10-CL1	3.24	124.42	119.35
2	B	709	CP6	C11-C10-CL1	3.11	124.22	119.35
3	B	710	NDP	O2B-C2B-C3B	-3.08	100.52	111.68
3	B	710	NDP	C1D-N1N-C2N	-3.07	116.00	121.11
4	B	711	UMP	O4'-C1'-C2'	-3.00	100.58	106.25
4	A	611	UMP	C1'-N1-C2	2.92	123.40	117.64
4	A	611	UMP	O4'-C1'-C2'	-2.88	100.80	106.25
3	A	610	NDP	C3N-C2N-N1N	-2.88	118.99	123.10
4	A	611	UMP	C2'-C1'-N1	2.87	120.38	113.77

Continued on next page...

Continued from previous page...

Mol	Chain	Res	Type	Atoms	Z	Observed(°)	Ideal(°)
4	A	611	UMP	C4'-O4'-C1'	2.83	116.30	109.45
4	B	711	UMP	C4'-O4'-C1'	2.83	116.29	109.45
3	B	710	NDP	C2A-N1A-C6A	2.82	123.58	118.75
4	B	711	UMP	C1'-N1-C2	2.82	123.19	117.64
4	B	711	UMP	O4'-C4'-C3'	-2.69	99.40	105.67
2	B	709	CP6	C8-C7-C12	-2.67	116.28	118.65
3	A	610	NDP	O4B-C1B-C2B	-2.65	101.99	106.59
3	A	610	NDP	C2A-N1A-C6A	2.64	123.27	118.75
2	B	709	CP6	C9-C10-CL1	-2.55	115.38	119.35
4	A	611	UMP	O4'-C4'-C3'	-2.48	99.89	105.67
3	B	710	NDP	PN-O3-PA	-2.48	124.33	132.83
4	A	611	UMP	C2'-C3'-C4'	2.45	107.86	102.76
3	B	710	NDP	C3N-C2N-N1N	-2.43	119.63	123.10
3	B	710	NDP	C1B-N9A-C4A	-2.40	122.42	126.64
4	A	611	UMP	O2-C2-N1	2.33	125.89	122.79
2	B	709	CP6	C4-C3-N13	-2.33	118.47	122.67
4	B	711	UMP	C2'-C3'-C4'	2.30	107.56	102.76
4	B	711	UMP	O4-C4-N3	2.22	122.56	119.31
4	A	611	UMP	O4-C4-N3	2.19	122.52	119.31
2	A	609	CP6	C4-C3-N13	-2.17	118.76	122.67
2	B	709	CP6	C16-C15-C5	2.17	120.17	114.88
4	B	711	UMP	O2-C2-N1	2.10	125.58	122.79
4	B	711	UMP	C6-N1-C2	2.08	123.65	120.99
4	B	711	UMP	O4-C4-C5	-2.04	121.58	125.16

There are no chirality outliers.

All (10) torsion outliers are listed below:

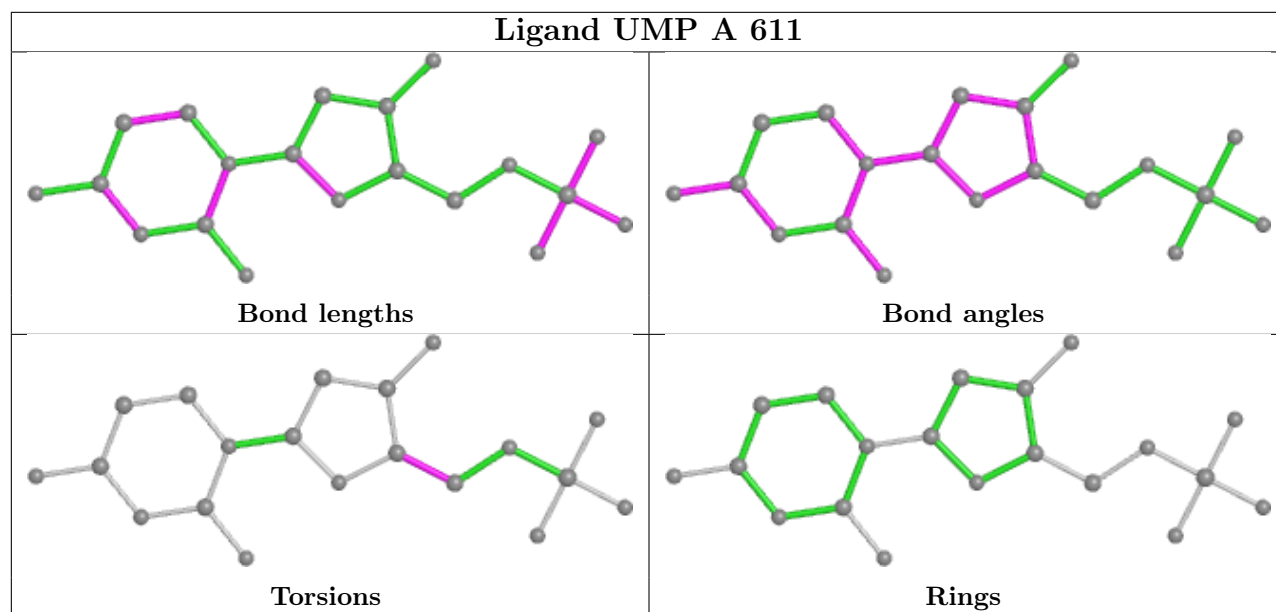
Mol	Chain	Res	Type	Atoms
3	A	610	NDP	O4D-C1D-N1N-C2N
3	B	710	NDP	O4D-C1D-N1N-C2N
3	A	610	NDP	C2D-C1D-N1N-C2N
2	B	709	CP6	C16-C15-C5-C4
3	B	710	NDP	C2D-C1D-N1N-C2N
4	B	711	UMP	O4'-C4'-C5'-O5'
3	A	610	NDP	O4D-C1D-N1N-C6N
4	A	611	UMP	O4'-C4'-C5'-O5'
3	A	610	NDP	C2N-C3N-C7N-N7N
3	B	710	NDP	C2N-C3N-C7N-N7N

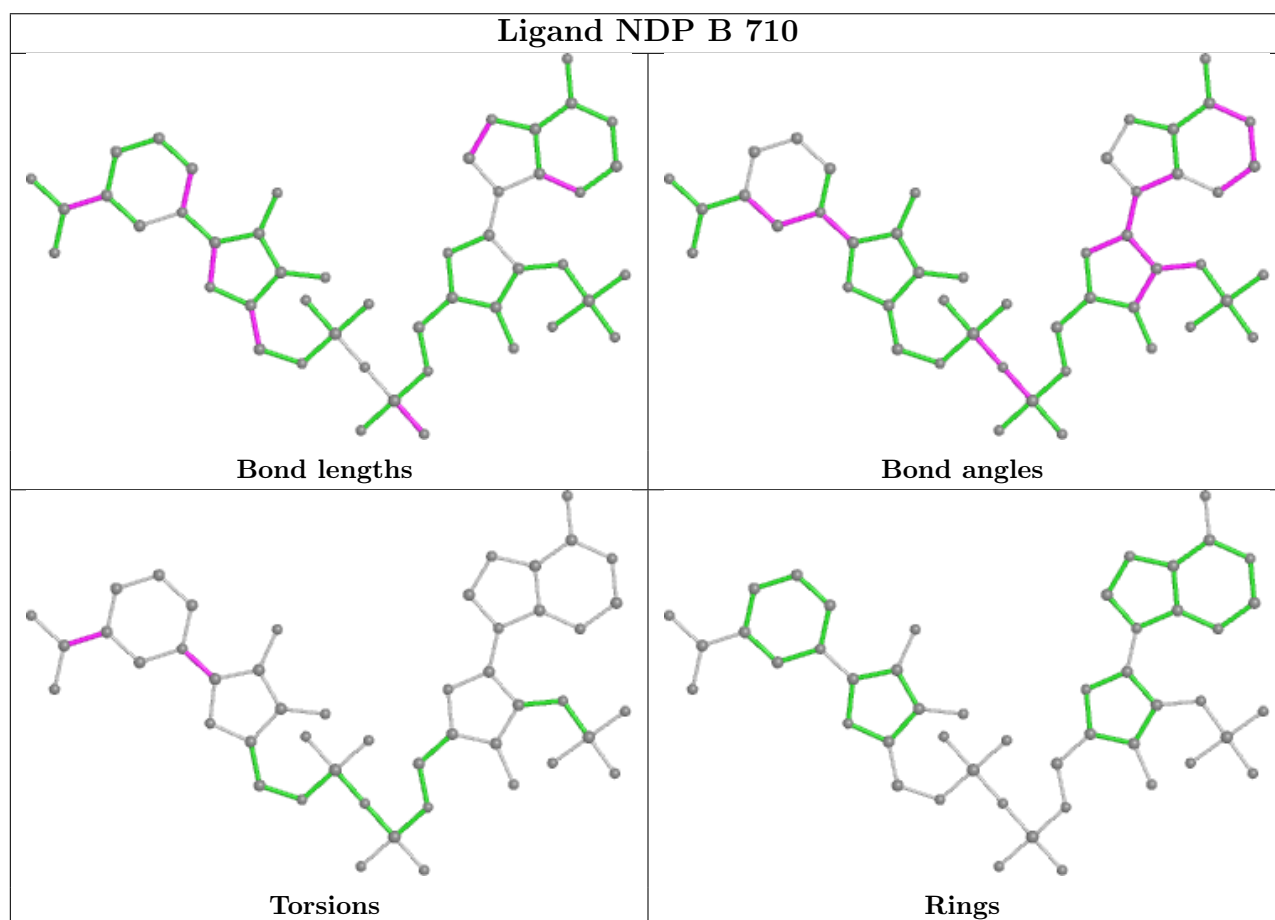
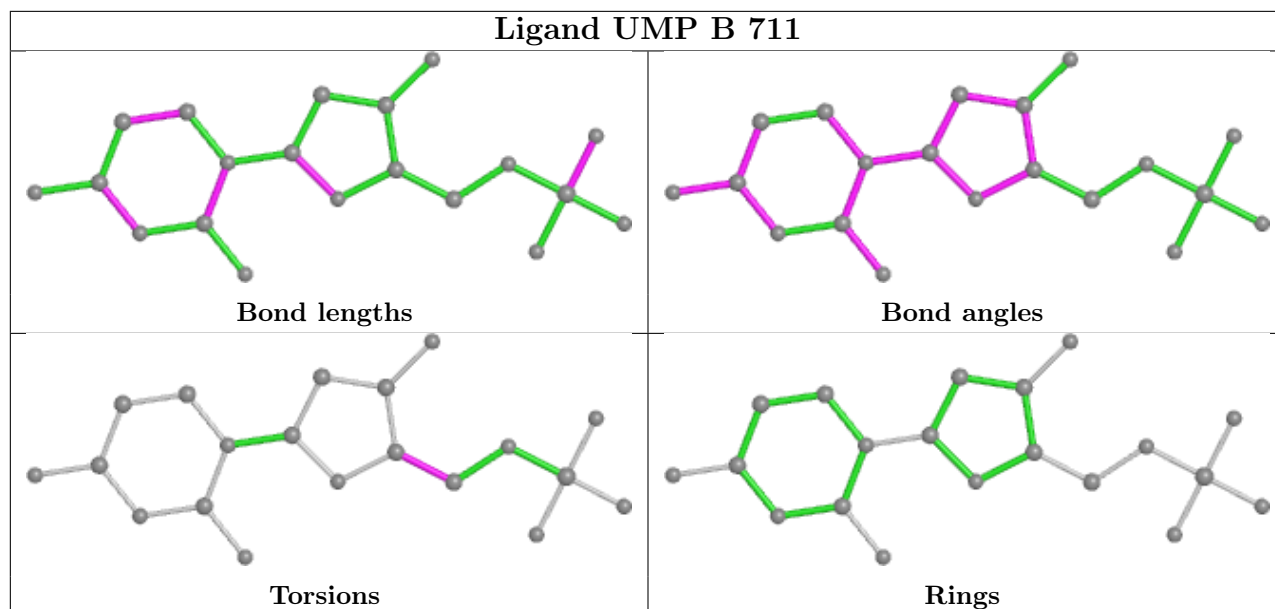
There are no ring outliers.

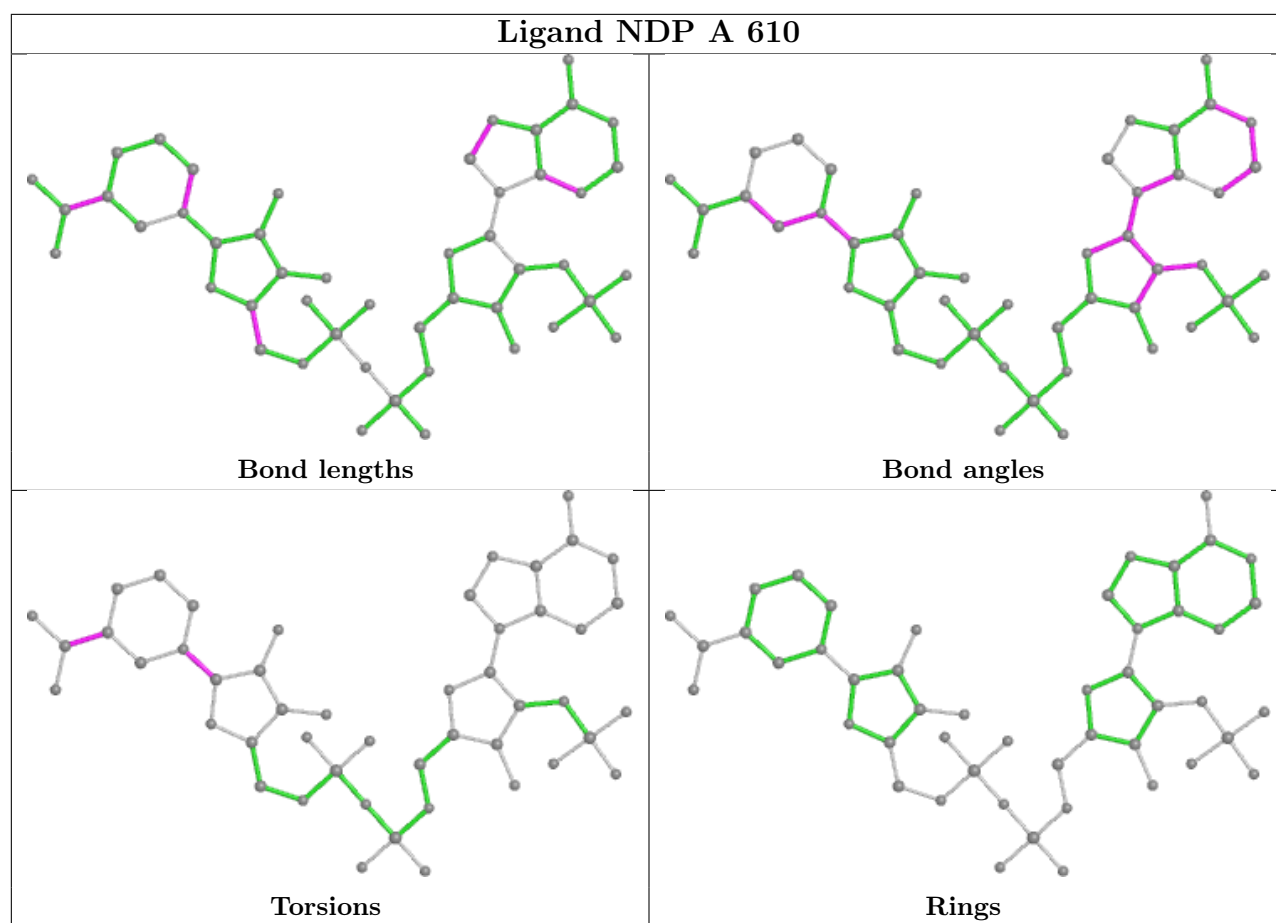
3 monomers are involved in 8 short contacts:

Mol	Chain	Res	Type	Clashes	Symm-Clashes
2	A	609	CP6	1	0
3	B	710	NDP	2	0
3	A	610	NDP	5	0

The following is a two-dimensional graphical depiction of Mogul quality analysis of bond lengths, bond angles, torsion angles, and ring geometry for all instances of the Ligand of Interest. In addition, ligands with molecular weight > 250 and outliers as shown on the validation Tables will also be included. For torsion angles, if less than 5% of the Mogul distribution of torsion angles is within 10 degrees of the torsion angle in question, then that torsion angle is considered an outlier. Any bond that is central to one or more torsion angles identified as an outlier by Mogul will be highlighted in the graph. For rings, the root-mean-square deviation (RMSD) between the ring in question and similar rings identified by Mogul is calculated over all ring torsion angles. If the average RMSD is greater than 60 degrees and the minimal RMSD between the ring in question and any Mogul-identified rings is also greater than 60 degrees, then that ring is considered an outlier. The outliers are highlighted in purple. The color gray indicates Mogul did not find sufficient equivalents in the CSD to analyse the geometry.







5.7 Other polymers [\(i\)](#)

There are no such residues in this entry.

5.8 Polymer linkage issues [\(i\)](#)

There are no chain breaks in this entry.

6 Fit of model and data

6.1 Protein, DNA and RNA chains

In the following table, the column labelled ‘#RSRZ > 2’ contains the number (and percentage) of RSRZ outliers, followed by percent RSRZ outliers for the chain as percentile scores relative to all X-ray entries and entries of similar resolution. The OWAB column contains the minimum, median, 95th percentile and maximum values of the occupancy-weighted average B-factor per residue. The column labelled ‘Q < 0.9’ lists the number of (and percentage) of residues with an average occupancy less than 0.9.

Mol	Chain	Analysed	<RSRZ>	#RSRZ>2	OWAB(Å ²)	Q<0.9
1	A	546/608 (89%)	-0.01	39 (7%) 16 14	21, 35, 86, 90	0
1	B	544/608 (89%)	0.39	83 (15%) 2 1	21, 43, 90, 90	0
All	All	1090/1216 (89%)	0.19	122 (11%) 5 4	21, 37, 90, 90	0

All (122) RSRZ outliers are listed below:

Mol	Chain	Res	Type	RSRZ
1	B	26	GLY	11.5
1	A	2	MET	9.7
1	B	27	LYS	9.1
1	A	1	MET	8.4
1	B	28	LYS	7.6
1	A	26	GLY	6.6
1	B	136	PHE	6.3
1	A	304	LYS	6.3
1	B	75	TYR	6.1
1	B	29	ASN	6.0
1	B	608	ALA	6.0
1	A	231	ASN	6.0
1	B	115	LYS	5.5
1	A	230	ASN	5.4
1	B	80	TYR	5.4
1	A	27	LYS	5.3
1	A	28	LYS	5.2
1	B	81	LEU	5.2
1	A	284	ASP	5.2
1	B	116	PHE	5.2
1	B	24	ASN	5.2
1	A	24	ASN	5.0
1	A	305	ASN	5.0
1	B	82	ASN	4.9

Continued on next page...

Continued from previous page...

Mol	Chain	Res	Type	RSRZ
1	A	608	ALA	4.7
1	A	299	LYS	4.6
1	B	73	LEU	4.5
1	B	231	ASN	4.4
1	B	230	ASN	4.3
1	A	298	GLU	4.3
1	B	78	CYS	4.3
1	B	14	ILE	4.2
1	A	300	GLU	4.2
1	B	134	GLU	4.2
1	B	130	THR	4.2
1	B	299	LYS	4.2
1	B	157	ASN	4.1
1	A	301	GLU	4.1
1	B	25	GLU	4.1
1	B	84	GLU	4.1
1	B	135	ASP	3.9
1	B	85	THR	3.9
1	A	84	GLU	3.9
1	B	70	TYR	3.9
1	B	97	LYS	3.9
1	B	132	LYS	3.8
1	B	23	LYS	3.8
1	A	346	THR	3.8
1	B	163	ILE	3.7
1	B	283	ASP	3.7
1	B	66	ASN	3.7
1	A	287	GLU	3.5
1	B	138	GLU	3.4
1	B	49	LYS	3.4
1	B	5	VAL	3.4
1	B	22	SER	3.4
1	B	307	ILE	3.4
1	A	3	GLU	3.4
1	A	29	ASN	3.3
1	B	76	LYS	3.3
1	B	346	THR	3.3
1	A	25	GLU	3.3
1	B	77	ARG	3.3
1	B	67	GLU	3.3
1	B	114	LYS	3.2
1	A	22	SER	3.2

Continued on next page...

Continued from previous page...

Mol	Chain	Res	Type	RSRZ
1	A	82	ASN	3.1
1	B	45	VAL	3.1
1	B	301	GLU	3.1
1	B	151	VAL	3.1
1	B	15	CYS	3.1
1	A	71	GLU	3.1
1	B	144	ASN	3.1
1	B	103	VAL	3.0
1	B	83	LYS	3.0
1	B	44	GLY	3.0
1	B	308	HIS	2.9
1	A	14	ILE	2.9
1	A	286	GLU	2.9
1	B	309	PRO	2.9
1	B	86	VAL	2.9
1	B	61	VAL	2.8
1	B	71	GLU	2.8
1	A	13	ALA	2.8
1	B	155	LYS	2.8
1	B	162	PHE	2.8
1	A	49	LYS	2.7
1	B	137	ASP	2.7
1	B	145	LYS	2.6
1	B	305	ASN	2.6
1	B	72	LYS	2.6
1	B	300	GLU	2.6
1	B	4	GLN	2.6
1	B	111	SER	2.6
1	A	83	LYS	2.6
1	B	161	CYS	2.6
1	A	96	LYS	2.5
1	B	285	GLU	2.5
1	B	228	LYS	2.5
1	A	307	ILE	2.5
1	A	78	CYS	2.4
1	B	11	ILE	2.4
1	B	304	LYS	2.4
1	A	102	VAL	2.4
1	B	286	GLU	2.4
1	A	163	ILE	2.3
1	B	129	ARG	2.3
1	B	139	ASP	2.3

Continued on next page...

Continued from previous page...

Mol	Chain	Res	Type	RSRZ
1	B	12	TYR	2.3
1	B	156	LEU	2.3
1	A	162	PHE	2.3
1	B	74	LYS	2.3
1	B	347	GLY	2.2
1	B	607	ALA	2.1
1	B	131	LEU	2.1
1	B	43	LYS	2.1
1	B	287	GLU	2.1
1	B	13	ALA	2.1
1	A	12	TYR	2.1
1	A	81	LEU	2.0
1	A	23	LYS	2.0
1	B	224	ILE	2.0

6.2 Non-standard residues in protein, DNA, RNA chains [i](#)

There are no non-standard protein/DNA/RNA residues in this entry.

6.3 Carbohydrates [i](#)

There are no monosaccharides in this entry.

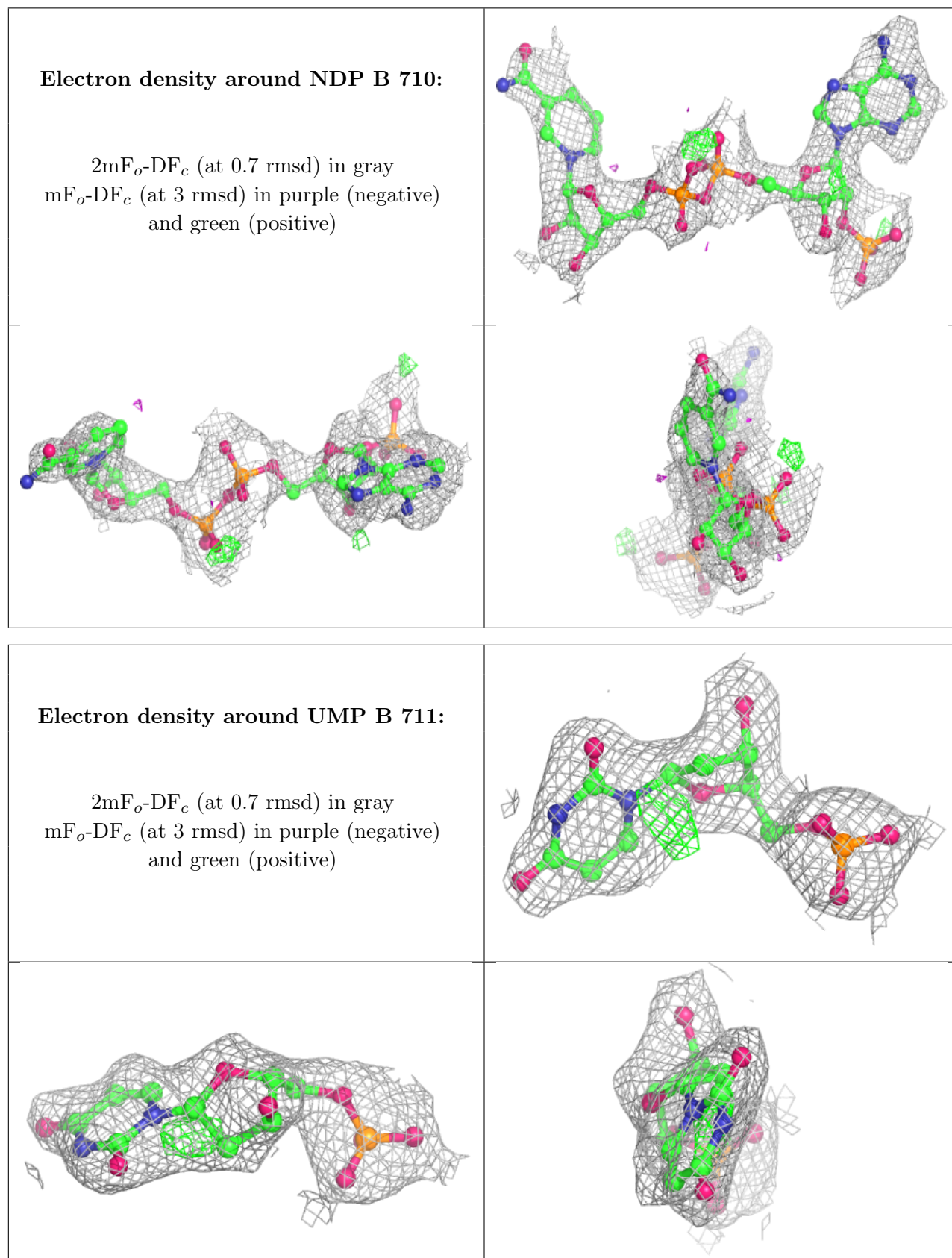
6.4 Ligands [i](#)

In the following table, the Atoms column lists the number of modelled atoms in the group and the number defined in the chemical component dictionary. The B-factors column lists the minimum, median, 95th percentile and maximum values of B factors of atoms in the group. The column labelled 'Q< 0.9' lists the number of atoms with occupancy less than 0.9.

Mol	Type	Chain	Res	Atoms	RSCC	RSR	B-factors(Å ²)	Q<0.9
2	CP6	B	709	17/17	0.84	0.30	66,69,73,74	0
3	NDP	B	710	48/48	0.85	0.18	81,86,89,89	0
2	CP6	A	609	17/17	0.94	0.20	23,25,34,39	0
4	UMP	B	711	20/20	0.96	0.12	38,42,44,45	0
4	UMP	A	611	20/20	0.97	0.11	33,39,48,49	0
3	NDP	A	610	48/48	0.97	0.10	25,36,39,40	0

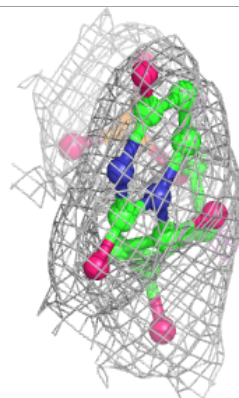
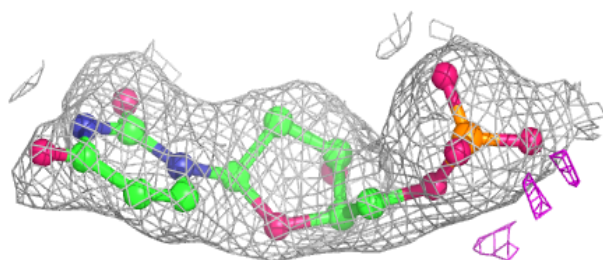
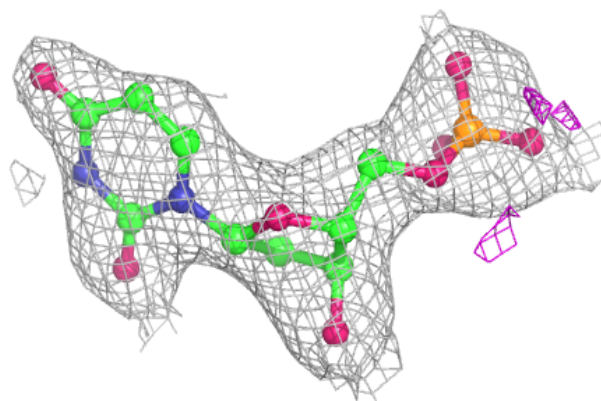
The following is a graphical depiction of the model fit to experimental electron density of all instances of the Ligand of Interest. In addition, ligands with molecular weight > 250 and outliers

as shown on the geometry validation Tables will also be included. Each fit is shown from different orientation to approximate a three-dimensional view.

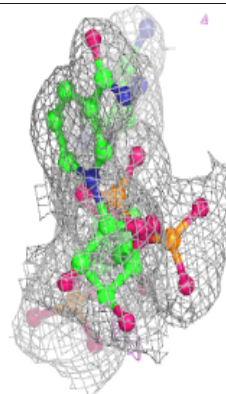
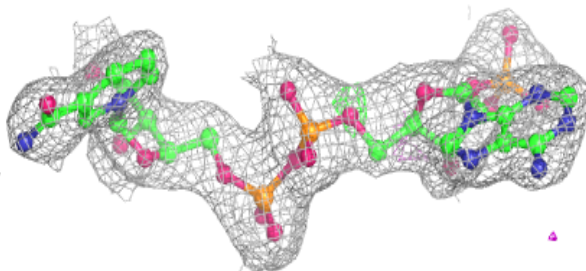
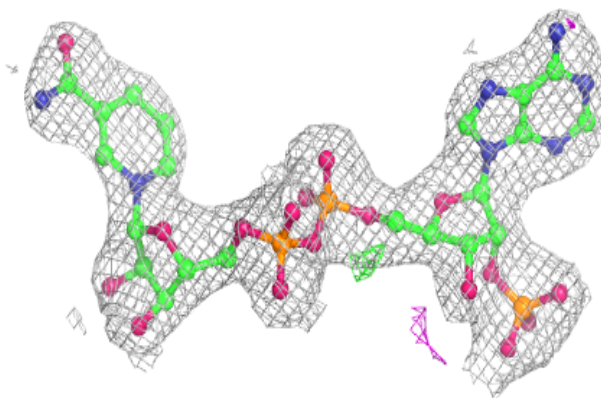


Electron density around UMP A 611:

$2mF_o-DF_c$ (at 0.7 rmsd) in gray
 mF_o-DF_c (at 3 rmsd) in purple (negative)
and green (positive)

**Electron density around NDP A 610:**

$2mF_o-DF_c$ (at 0.7 rmsd) in gray
 mF_o-DF_c (at 3 rmsd) in purple (negative)
and green (positive)



6.5 Other polymers [i](#)

There are no such residues in this entry.