



Full wwPDB X-ray Structure Validation Report ⓘ

Jan 24, 2023 – 09:38 PM EST

PDB ID : 3TY1
Title : Crystal structure of a putative aldose 1-epimerase (KPN_04629) from *Klebsiella pneumoniae* subsp. *pneumoniae* MGH 78578 at 1.90 Å resolution
Authors : Joint Center for Structural Genomics (JCSG)
Deposited on : 2011-09-23
Resolution : 1.90 Å (reported)

This is a Full wwPDB X-ray Structure Validation Report for a publicly released PDB entry.

We welcome your comments at validation@mail.wwpdb.org

A user guide is available at

<https://www.wwpdb.org/validation/2017/XrayValidationReportHelp>

with specific help available everywhere you see the ⓘ symbol.

The types of validation reports are described at

<http://www.wwpdb.org/validation/2017/FAQs#types>.

The following versions of software and data (see [references ⓘ](#)) were used in the production of this report:

MolProbity : 4.02b-467
Mogul : 1.8.5 (274361), CSD as541be (2020)
Xtriage (Phenix) : 1.13
EDS : 2.31.2
Percentile statistics : 20191225.v01 (using entries in the PDB archive December 25th 2019)
Refmac : 5.8.0158
CCP4 : 7.0.044 (Gargrove)
Ideal geometry (proteins) : Engh & Huber (2001)
Ideal geometry (DNA, RNA) : Parkinson et al. (1996)
Validation Pipeline (wwPDB-VP) : 2.31.2

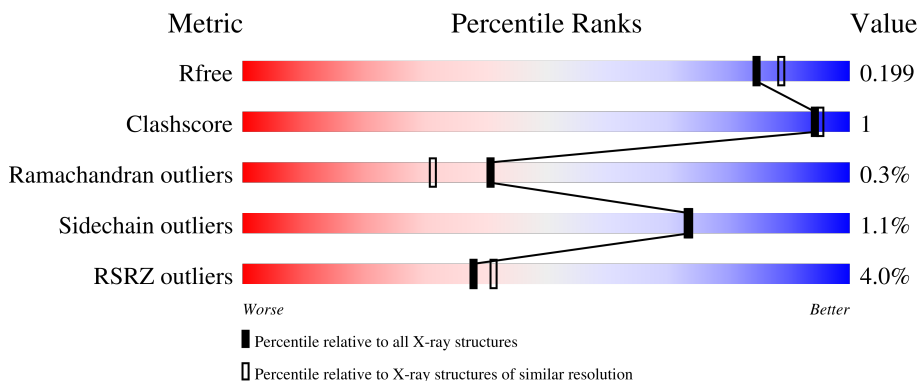
1 Overall quality at a glance

The following experimental techniques were used to determine the structure:

X-RAY DIFFRACTION

The reported resolution of this entry is 1.90 Å.

Percentile scores (ranging between 0-100) for global validation metrics of the entry are shown in the following graphic. The table shows the number of entries on which the scores are based.



Metric	Whole archive (#Entries)	Similar resolution (#Entries, resolution range(Å))
R_{free}	130704	6207 (1.90-1.90)
Clashscore	141614	6847 (1.90-1.90)
Ramachandran outliers	138981	6760 (1.90-1.90)
Sidechain outliers	138945	6760 (1.90-1.90)
RSRZ outliers	127900	6082 (1.90-1.90)

The table below summarises the geometric issues observed across the polymeric chains and their fit to the electron density. The red, orange, yellow and green segments of the lower bar indicate the fraction of residues that contain outliers for ≥ 3 , 2, 1 and 0 types of geometric quality criteria respectively. A grey segment represents the fraction of residues that are not modelled. The numeric value for each fraction is indicated below the corresponding segment, with a dot representing fractions $\leq 5\%$. The upper red bar (where present) indicates the fraction of residues that have poor fit to the electron density. The numeric value is given above the bar.

Mol	Chain	Length	Quality of chain
1	A	384	 96%
1	B	384	 97%
1	C	384	 94% 6%

2 Entry composition

There are 6 unique types of molecules in this entry. The entry contains 10002 atoms, of which 0 are hydrogens and 0 are deuteriums.

In the tables below, the ZeroOcc column contains the number of atoms modelled with zero occupancy, the AltConf column contains the number of residues with at least one atom in alternate conformation and the Trace column contains the number of residues modelled with at most 2 atoms.

- Molecule 1 is a protein called Hypothetical aldose 1-epimerase.

Mol	Chain	Residues	Atoms						ZeroOcc	AltConf	Trace
			Total	C	N	O	S	Se			
1	A	384	Total 3059	C 1936	N 521	O 596	S 1	Se 5	0	12	0
1	B	384	Total 3022	C 1916	N 516	O 584	S 1	Se 5	0	8	0
1	C	384	Total 2994	C 1894	N 512	O 581	S 1	Se 6	0	6	0

There are 3 discrepancies between the modelled and reference sequences:

Chain	Residue	Modelled	Actual	Comment	Reference
A	0	GLY	-	expression tag	UNP A6THE6
B	0	GLY	-	expression tag	UNP A6THE6
C	0	GLY	-	expression tag	UNP A6THE6

- Molecule 2 is CHLORIDE ION (three-letter code: CL) (formula: Cl).

Mol	Chain	Residues	Atoms		ZeroOcc	AltConf
2	A	3	Total 3	Cl 3	0	0
2	B	3	Total 3	Cl 3	0	0
2	C	1	Total 1	Cl 1	0	0

- Molecule 3 is SULFATE ION (three-letter code: SO4) (formula: O₄S).



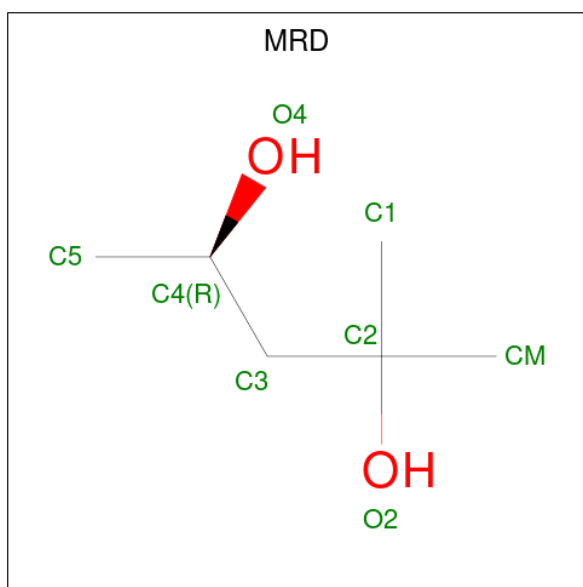
Mol	Chain	Residues	Atoms	ZeroOcc	AltConf
3	A	1	Total O S 5 4 1	0	0
3	A	1	Total O S 5 4 1	0	0
3	A	1	Total O S 5 4 1	0	0
3	A	1	Total O S 5 4 1	0	0
3	A	1	Total O S 5 4 1	0	0
3	A	1	Total O S 5 4 1	0	0
3	B	1	Total O S 5 4 1	0	0
3	C	1	Total O S 5 4 1	0	0
3	C	1	Total O S 5 4 1	0	0

- Molecule 4 is (4S)-2-METHYL-2,4-PENTANEDIOL (three-letter code: MPD) (formula: C₆H₁₄O₂).



Mol	Chain	Residues	Atoms	ZeroOcc	AltConf
4	A	1	Total C O 8 6 2	0	0
4	A	1	Total C O 8 6 2	0	0
4	B	1	Total C O 8 6 2	0	0
4	B	1	Total C O 8 6 2	0	0
4	B	1	Total C O 8 6 2	0	0
4	B	1	Total C O 8 6 2	0	0
4	B	1	Total C O 8 6 2	0	0
4	C	1	Total C O 8 6 2	0	0
4	C	1	Total C O 8 6 2	0	0

- Molecule 5 is (4R)-2-METHYLPENTANE-2,4-DIOL (three-letter code: MRD) (formula: C₆H₁₄O₂).



Mol	Chain	Residues	Atoms			ZeroOcc	AltConf
5	C	1	Total	C	O	0	0
			8	6	2		

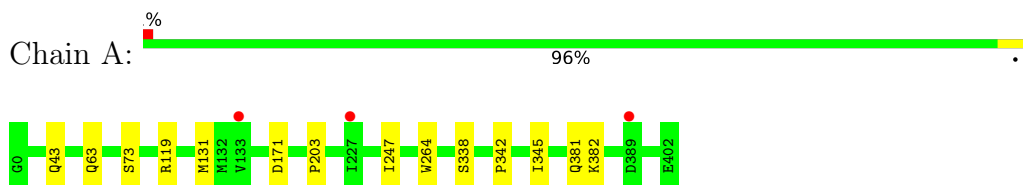
- Molecule 6 is water.

Mol	Chain	Residues	Atoms		ZeroOcc	AltConf
6	A	320	Total	O	0	7
			325	325		
6	B	321	Total	O	0	8
			328	328		
6	C	137	Total	O	0	7
			142	142		

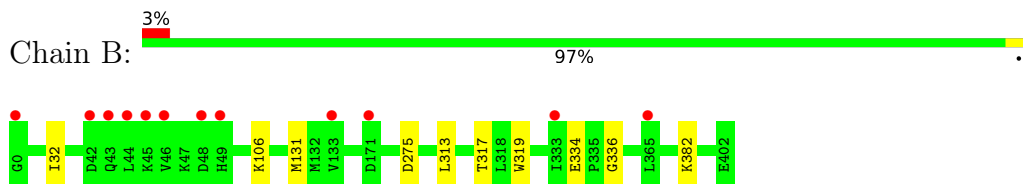
3 Residue-property plots [i](#)

These plots are drawn for all protein, RNA, DNA and oligosaccharide chains in the entry. The first graphic for a chain summarises the proportions of the various outlier classes displayed in the second graphic. The second graphic shows the sequence view annotated by issues in geometry and electron density. Residues are color-coded according to the number of geometric quality criteria for which they contain at least one outlier: green = 0, yellow = 1, orange = 2 and red = 3 or more. A red dot above a residue indicates a poor fit to the electron density ($RSRZ > 2$). Stretches of 2 or more consecutive residues without any outlier are shown as a green connector. Residues present in the sample, but not in the model, are shown in grey.

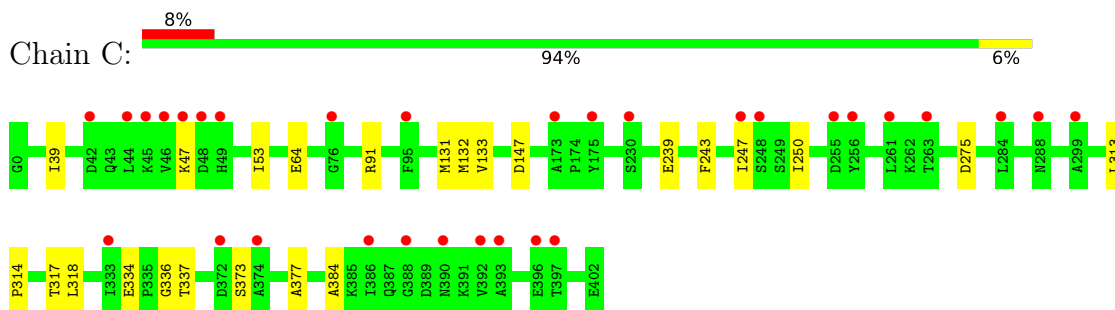
- Molecule 1: Hypothetical aldose 1-epimerase



- Molecule 1: Hypothetical aldose 1-epimerase



- Molecule 1: Hypothetical aldose 1-epimerase



4 Data and refinement statistics

Property	Value	Source
Space group	C 1 2 1	Depositor
Cell constants a, b, c, α , β , γ	124.03Å 119.95Å 103.02Å 90.00° 106.72° 90.00°	Depositor
Resolution (Å)	29.70 – 1.90 29.70 – 1.90	Depositor EDS
% Data completeness (in resolution range)	100.0 (29.70-1.90) 100.0 (29.70-1.90)	Depositor EDS
R_{merge}	(Not available)	Depositor
R_{sym}	0.07	Depositor
$\langle I/\sigma(I) \rangle$ ¹	2.18 (at 1.91Å)	Xtrriage
Refinement program	REFMAC 5.5.0110	Depositor
R, R_{free}	0.158 , 0.193 0.166 , 0.199	Depositor DCC
R_{free} test set	5671 reflections (5.00%)	wwPDB-VP
Wilson B-factor (Å ²)	28.6	Xtrriage
Anisotropy	0.219	Xtrriage
Bulk solvent k_{sol} (e/Å ³), B_{sol} (Å ²)	0.33 , 49.9	EDS
L-test for twinning ²	$\langle L \rangle = 0.49$, $\langle L^2 \rangle = 0.32$	Xtrriage
Estimated twinning fraction	No twinning to report.	Xtrriage
F_o, F_c correlation	0.97	EDS
Total number of atoms	10002	wwPDB-VP
Average B, all atoms (Å ²)	47.0	wwPDB-VP

Xtrriage's analysis on translational NCS is as follows: *The largest off-origin peak in the Patterson function is 4.21% of the height of the origin peak. No significant pseudotranslation is detected.*

¹Intensities estimated from amplitudes.

²Theoretical values of $\langle |L| \rangle$, $\langle L^2 \rangle$ for acentric reflections are 0.5, 0.333 respectively for untwinned datasets, and 0.375, 0.2 for perfectly twinned datasets.

5 Model quality [i](#)

5.1 Standard geometry [i](#)

Bond lengths and bond angles in the following residue types are not validated in this section: MRD, SO4, MPD, CL

The Z score for a bond length (or angle) is the number of standard deviations the observed value is removed from the expected value. A bond length (or angle) with $|Z| > 5$ is considered an outlier worth inspection. RMSZ is the root-mean-square of all Z scores of the bond lengths (or angles).

Mol	Chain	Bond lengths		Bond angles	
		RMSZ	# Z >5	RMSZ	# Z >5
1	A	0.74	1/3152 (0.0%)	0.80	2/4271 (0.0%)
1	B	0.75	0/3111	0.78	0/4223
1	C	0.65	1/3073 (0.0%)	0.79	4/4173 (0.1%)
All	All	0.72	2/9336 (0.0%)	0.79	6/12667 (0.0%)

All (2) bond length outliers are listed below:

Mol	Chain	Res	Type	Atoms	Z	Observed(Å)	Ideal(Å)
1	C	377	ALA	C-O	5.15	1.33	1.23
1	A	63	GLN	CB-CG	-5.07	1.38	1.52

All (6) bond angle outliers are listed below:

Mol	Chain	Res	Type	Atoms	Z	Observed(°)	Ideal(°)
1	C	147[A]	ASP	C-N-CA	10.61	144.59	122.30
1	C	147[B]	ASP	C-N-CA	10.61	144.59	122.30
1	C	147[A]	ASP	N-CA-C	-6.67	93.00	111.00
1	C	147[B]	ASP	N-CA-C	-6.67	93.00	111.00
1	A	119	ARG	NE-CZ-NH1	5.52	123.06	120.30
1	A	171	ASP	CB-CG-OD1	5.25	123.03	118.30

There are no chirality outliers.

There are no planarity outliers.

5.2 Too-close contacts [i](#)

In the following table, the Non-H and H(model) columns list the number of non-hydrogen atoms and hydrogen atoms in the chain respectively. The H(added) column lists the number of hydrogen atoms added and optimized by MolProbity. The Clashes column lists the number of clashes within

the asymmetric unit, whereas Symm-Clashes lists symmetry-related clashes.

Mol	Chain	Non-H	H(model)	H(added)	Clashes	Symm-Clashes
1	A	3059	0	3007	4	0
1	B	3022	0	2947	4	0
1	C	2994	0	2893	13	0
2	A	3	0	0	0	0
2	B	3	0	0	0	0
2	C	1	0	0	0	0
3	A	30	0	0	0	0
3	B	5	0	0	0	0
3	C	10	0	0	0	0
4	A	16	0	28	2	0
4	B	40	0	70	3	0
4	C	16	0	28	1	0
5	C	8	0	14	0	0
6	A	325	0	0	1	0
6	B	328	0	0	0	0
6	C	142	0	0	5	0
All	All	10002	0	8987	23	0

The all-atom clashscore is defined as the number of clashes found per 1000 atoms (including hydrogen atoms). The all-atom clashscore for this structure is 1.

All (23) close contacts within the same asymmetric unit are listed below, sorted by their clash magnitude.

Atom-1	Atom-2	Interatomic distance (Å)	Clash overlap (Å)
1:B:106:LYS:O	4:B:518:MPD:H11	1.94	0.68
1:C:64:GLU:OE1	6:C:758[B]:HOH:O	2.12	0.67
1:C:132[B]:MSE:HE2	1:C:133:VAL:N	2.12	0.65
1:A:73[B]:SER:HB2	6:A:669:HOH:O	1.97	0.63
1:C:373[A]:SER:CB	6:C:1265[A]:HOH:O	2.48	0.60
1:C:373[A]:SER:HB2	6:C:1265[A]:HOH:O	2.02	0.59
4:B:519:MPD:H52	4:B:519:MPD:H11	1.88	0.56
1:A:247[B]:ILE:HD12	1:A:264:TRP:CH2	2.42	0.54
1:C:313:LEU:HD22	1:C:336:GLY:HA2	1.91	0.51
1:C:317:THR:HB	1:C:334:GLU:HB2	1.93	0.50
1:C:314:PRO:HD2	1:C:337:THR:HA	1.93	0.49
1:A:382:LYS:HE2	4:A:517:MPD:H12	1.96	0.47
1:C:243:PHE:CD2	1:C:318:LEU:HD22	2.49	0.47
1:B:313:LEU:HD22	1:B:336:GLY:HA2	1.97	0.47
1:C:91:ARG:NH1	4:C:523:MPD:HM2	2.30	0.46
1:C:384:ALA:HA	6:C:1271:HOH:O	2.15	0.45

Continued on next page...

Continued from previous page...

Atom-1	Atom-2	Interatomic distance (Å)	Clash overlap (Å)
1:B:317:THR:HB	1:B:334:GLU:HB2	1.99	0.45
1:C:247:ILE:HD12	1:C:250:ILE:HB	2.00	0.43
1:C:39:ILE:HD11	1:C:53:ILE:HD12	2.00	0.43
4:A:517:MPD:HM2	4:A:522:MPD:C3	2.49	0.42
1:B:319:TRP:CE2	4:B:519:MPD:H12	2.55	0.42
1:A:342:PRO:HD2	1:A:345:ILE:HD12	2.02	0.41
1:C:373[A]:SER:HB3	6:C:1265[A]:HOH:O	2.18	0.41

There are no symmetry-related clashes.

5.3 Torsion angles [\(i\)](#)

5.3.1 Protein backbone [\(i\)](#)

In the following table, the Percentiles column shows the percent Ramachandran outliers of the chain as a percentile score with respect to all X-ray entries followed by that with respect to entries of similar resolution.

The Analysed column shows the number of residues for which the backbone conformation was analysed, and the total number of residues.

Mol	Chain	Analysed	Favoured	Allowed	Outliers	Percentiles	
1	A	394/384 (103%)	380 (96%)	14 (4%)	0	100	100
1	B	390/384 (102%)	376 (96%)	13 (3%)	1 (0%)	41	31
1	C	388/384 (101%)	376 (97%)	10 (3%)	2 (0%)	29	18
All	All	1172/1152 (102%)	1132 (97%)	37 (3%)	3 (0%)	41	31

All (3) Ramachandran outliers are listed below:

Mol	Chain	Res	Type
1	C	275	ASP
1	C	47	LYS
1	B	275	ASP

5.3.2 Protein sidechains [\(i\)](#)

In the following table, the Percentiles column shows the percent sidechain outliers of the chain as a percentile score with respect to all X-ray entries followed by that with respect to entries of similar resolution.

The Analysed column shows the number of residues for which the sidechain conformation was analysed, and the total number of residues.

Mol	Chain	Analysed	Rotameric	Outliers	Percentiles	
1	A	332/319 (104%)	327 (98%)	5 (2%)	65	62
1	B	324/319 (102%)	320 (99%)	4 (1%)	71	70
1	C	318/319 (100%)	316 (99%)	2 (1%)	86	87
All	All	974/957 (102%)	963 (99%)	11 (1%)	73	73

All (11) residues with a non-rotameric sidechain are listed below:

Mol	Chain	Res	Type
1	A	43	GLN
1	A	131	MSE
1	A	203	PRO
1	A	338	SER
1	A	381	GLN
1	B	32[A]	ILE
1	B	32[B]	ILE
1	B	131	MSE
1	B	382	LYS
1	C	131	MSE
1	C	239	GLU

Sometimes sidechains can be flipped to improve hydrogen bonding and reduce clashes. All (1) such sidechains are listed below:

Mol	Chain	Res	Type
1	B	38	GLN

5.3.3 RNA [i](#)

There are no RNA molecules in this entry.

5.4 Non-standard residues in protein, DNA, RNA chains [i](#)

There are no non-standard protein/DNA/RNA residues in this entry.

5.5 Carbohydrates [i](#)

There are no monosaccharides in this entry.

5.6 Ligand geometry

Of 26 ligands modelled in this entry, 7 are monoatomic - leaving 19 for Mogul analysis.

In the following table, the Counts columns list the number of bonds (or angles) for which Mogul statistics could be retrieved, the number of bonds (or angles) that are observed in the model and the number of bonds (or angles) that are defined in the Chemical Component Dictionary. The Link column lists molecule types, if any, to which the group is linked. The Z score for a bond length (or angle) is the number of standard deviations the observed value is removed from the expected value. A bond length (or angle) with $|Z| > 2$ is considered an outlier worth inspection. RMSZ is the root-mean-square of all Z scores of the bond lengths (or angles).

Mol	Type	Chain	Res	Link	Bond lengths			Bond angles		
					Counts	RMSZ	# Z > 2	Counts	RMSZ	# Z > 2
3	SO4	A	511	-	4,4,4	0.28	0	6,6,6	0.26	0
4	MPD	C	521	-	7,7,7	0.33	0	9,10,10	0.65	0
3	SO4	C	512	-	4,4,4	0.05	0	6,6,6	0.64	0
4	MPD	B	519	-	7,7,7	0.48	0	9,10,10	0.87	0
3	SO4	A	507	-	4,4,4	0.19	0	6,6,6	0.23	0
4	MPD	B	516	-	7,7,7	0.37	0	9,10,10	0.56	0
3	SO4	A	513	-	4,4,4	0.26	0	6,6,6	0.18	0
4	MPD	B	520	-	7,7,7	0.30	0	9,10,10	0.48	0
3	SO4	A	510	-	4,4,4	0.20	0	6,6,6	0.33	0
4	MPD	C	523	-	7,7,7	0.43	0	9,10,10	1.02	0
4	MPD	A	522	-	7,7,7	0.42	0	9,10,10	0.52	0
5	MRD	C	525	-	7,7,7	0.43	0	9,10,10	0.63	0
3	SO4	C	515	-	4,4,4	0.16	0	6,6,6	0.14	0
3	SO4	A	508	-	4,4,4	0.15	0	6,6,6	0.30	0
3	SO4	A	509	-	4,4,4	0.20	0	6,6,6	0.54	0
4	MPD	B	524	-	7,7,7	0.37	0	9,10,10	0.96	0
4	MPD	B	518	-	7,7,7	0.49	0	9,10,10	0.75	0
3	SO4	B	514	-	4,4,4	0.18	0	6,6,6	0.43	0
4	MPD	A	517	-	7,7,7	0.34	0	9,10,10	0.59	0

In the following table, the Chirals column lists the number of chiral outliers, the number of chiral centers analysed, the number of these observed in the model and the number defined in the Chemical Component Dictionary. Similar counts are reported in the Torsion and Rings columns. '-' means no outliers of that kind were identified.

Mol	Type	Chain	Res	Link	Chirals	Torsions	Rings
4	MPD	B	520	-	-	2/5/5/5	-
5	MRD	C	525	-	-	0/5/5/5	-
4	MPD	C	521	-	-	0/5/5/5	-
4	MPD	B	519	-	-	4/5/5/5	-
4	MPD	B	524	-	-	5/5/5/5	-

Continued on next page...

Continued from previous page...

Mol	Type	Chain	Res	Link	Chirals	Torsions	Rings
4	MPD	B	518	-	-	1/5/5/5	-
4	MPD	A	517	-	-	1/5/5/5	-
4	MPD	B	516	-	-	1/5/5/5	-
4	MPD	A	522	-	-	3/5/5/5	-
4	MPD	C	523	-	-	2/5/5/5	-

There are no bond length outliers.

There are no bond angle outliers.

There are no chirality outliers.

All (19) torsion outliers are listed below:

Mol	Chain	Res	Type	Atoms
4	B	519	MPD	C1-C2-C3-C4
4	B	524	MPD	C1-C2-C3-C4
4	B	524	MPD	O2-C2-C3-C4
4	B	524	MPD	C2-C3-C4-O4
4	C	523	MPD	O2-C2-C3-C4
4	C	523	MPD	CM-C2-C3-C4
4	B	519	MPD	O2-C2-C3-C4
4	B	524	MPD	C2-C3-C4-C5
4	A	522	MPD	CM-C2-C3-C4
4	B	519	MPD	CM-C2-C3-C4
4	B	520	MPD	C1-C2-C3-C4
4	B	524	MPD	CM-C2-C3-C4
4	A	522	MPD	O2-C2-C3-C4
4	B	520	MPD	O2-C2-C3-C4
4	A	522	MPD	C2-C3-C4-C5
4	B	519	MPD	C2-C3-C4-C5
4	A	517	MPD	C2-C3-C4-O4
4	B	516	MPD	C2-C3-C4-O4
4	B	518	MPD	C2-C3-C4-O4

There are no ring outliers.

5 monomers are involved in 6 short contacts:

Mol	Chain	Res	Type	Clashes	Symm-Clashes
4	B	519	MPD	2	0
4	C	523	MPD	1	0
4	A	522	MPD	1	0
4	B	518	MPD	1	0

Continued on next page...

Continued from previous page...

Mol	Chain	Res	Type	Clashes	Symm-Clashes
4	A	517	MPD	2	0

5.7 Other polymers [i](#)

There are no such residues in this entry.

5.8 Polymer linkage issues [i](#)

There are no chain breaks in this entry.

6 Fit of model and data

6.1 Protein, DNA and RNA chains

In the following table, the column labelled ‘#RSRZ > 2’ contains the number (and percentage) of RSRZ outliers, followed by percent RSRZ outliers for the chain as percentile scores relative to all X-ray entries and entries of similar resolution. The OWAB column contains the minimum, median, 95th percentile and maximum values of the occupancy-weighted average B-factor per residue. The column labelled ‘Q < 0.9’ lists the number of (and percentage) of residues with an average occupancy less than 0.9.

Mol	Chain	Analysed	<RSRZ>	#RSRZ>2	OWAB(Å ²)	Q<0.9
1	A	379/384 (98%)	-0.35	3 (0%) 86 87	24, 37, 56, 72	0
1	B	379/384 (98%)	-0.28	12 (3%) 47 50	23, 35, 58, 111	0
1	C	379/384 (98%)	0.35	31 (8%) 11 13	32, 61, 101, 122	0
All	All	1137/1152 (98%)	-0.09	46 (4%) 38 41	23, 41, 87, 122	0

All (46) RSRZ outliers are listed below:

Mol	Chain	Res	Type	RSRZ
1	B	46	VAL	8.7
1	C	49[A]	HIS	6.4
1	C	46	VAL	5.6
1	C	393	ALA	5.2
1	B	0	GLY	4.4
1	B	49	HIS	4.4
1	C	48	ASP	4.1
1	C	374	ALA	4.1
1	C	388	GLY	3.8
1	C	95	PHE	3.8
1	C	390	ASN	3.7
1	B	44	LEU	3.5
1	C	392	VAL	3.3
1	C	333	ILE	3.3
1	C	284	LEU	3.2
1	C	397	THR	3.1
1	C	173	ALA	3.1
1	C	299	ALA	3.1
1	C	288	ASN	3.0
1	B	133	VAL	2.8
1	B	333	ILE	2.8
1	B	43	GLN	2.7
1	C	45	LYS	2.7

Continued on next page...

Continued from previous page...

Mol	Chain	Res	Type	RSRZ
1	C	247	ILE	2.6
1	B	48	ASP	2.6
1	C	47	LYS	2.6
1	C	248	SER	2.5
1	C	386	ILE	2.5
1	C	76	GLY	2.5
1	C	230	SER	2.5
1	C	175	TYR	2.5
1	B	45	LYS	2.4
1	C	396	GLU	2.4
1	C	263	THR	2.4
1	C	42	ASP	2.3
1	C	44	LEU	2.3
1	B	42	ASP	2.2
1	B	171	ASP	2.2
1	C	261	LEU	2.2
1	A	227	ILE	2.1
1	B	365	LEU	2.1
1	C	256	TYR	2.1
1	C	255	ASP	2.1
1	A	133	VAL	2.0
1	A	389	ASP	2.0
1	C	372	ASP	2.0

6.2 Non-standard residues in protein, DNA, RNA chains [i](#)

There are no non-standard protein/DNA/RNA residues in this entry.

6.3 Carbohydrates [i](#)

There are no monosaccharides in this entry.

6.4 Ligands [i](#)

In the following table, the Atoms column lists the number of modelled atoms in the group and the number defined in the chemical component dictionary. The B-factors column lists the minimum, median, 95th percentile and maximum values of B factors of atoms in the group. The column labelled 'Q< 0.9' lists the number of atoms with occupancy less than 0.9.

Continued on next page...

Continued from previous page...

Mol	Type	Chain	Res	Atoms	RSCC	RSR	B-factors(Å ²)	Q<0.9
2	CL	B	506	1/1	0.75	0.24	86,86,86,86	0
4	MPD	C	521	8/8	0.78	0.26	78,88,91,91	0
4	MPD	B	524	8/8	0.79	0.27	68,75,78,78	0
4	MPD	A	522	8/8	0.79	0.20	69,74,81,84	0
3	SO4	C	515	5/5	0.81	0.24	113,114,115,115	0
3	SO4	A	507	5/5	0.83	0.18	85,92,101,102	0
4	MPD	B	519	8/8	0.83	0.38	54,66,73,75	0
4	MPD	C	523	8/8	0.84	0.23	62,73,80,80	0
4	MPD	B	520	8/8	0.85	0.16	83,86,89,90	0
2	CL	B	502	1/1	0.86	0.07	78,78,78,78	0
2	CL	A	504	1/1	0.87	0.10	76,76,76,76	0
5	MRD	C	525	8/8	0.88	0.26	60,77,84,86	0
4	MPD	B	518	8/8	0.89	0.23	51,65,73,77	0
2	CL	B	501	1/1	0.90	0.07	70,70,70,70	0
4	MPD	A	517	8/8	0.90	0.15	56,70,75,75	0
4	MPD	B	516	8/8	0.91	0.13	49,63,64,66	0
3	SO4	A	510	5/5	0.92	0.30	91,98,103,103	0
3	SO4	A	509	5/5	0.92	0.12	65,71,78,86	0
3	SO4	C	512	5/5	0.93	0.14	64,80,85,95	0
2	CL	A	505	1/1	0.93	0.14	76,76,76,76	0
3	SO4	B	514	5/5	0.93	0.21	75,77,84,92	0
3	SO4	A	513	5/5	0.94	0.08	56,72,83,85	0
3	SO4	A	511	5/5	0.94	0.27	53,60,70,88	0
2	CL	A	500	1/1	0.96	0.11	66,66,66,66	0
3	SO4	A	508	5/5	0.97	0.09	78,79,84,87	0
2	CL	C	503	1/1	0.97	0.05	79,79,79,79	0

6.5 Other polymers [i](#)

There are no such residues in this entry.