



# wwPDB X-ray Structure Validation Summary Report ⓘ

Sep 4, 2023 – 08:31 PM EDT

PDB ID : 3TV5  
Title : Crystal Structure of the humanized carboxyltransferase domain of yeast Acetyl-coA carboxylase in complex with compound 1  
Authors : Rajamohan, F.; Marr, E.; Reyes, A.; Landro, J.A.; Anderson, M.D.; Corbett, J.W.; Dirico, K.J.; Harwood, J.H.; Tu, M.; Vajdos, F.F.  
Deposited on : 2011-09-19  
Resolution : 2.80 Å(reported)

This is a wwPDB X-ray Structure Validation Summary Report for a publicly released PDB entry.

We welcome your comments at [validation@mail.wwpdb.org](mailto:validation@mail.wwpdb.org)

A user guide is available at

<https://www.wwpdb.org/validation/2017/XrayValidationReportHelp>

with specific help available everywhere you see the ⓘ symbol.

The types of validation reports are described at

<http://www.wwpdb.org/validation/2017/FAQs#types>.

---

The following versions of software and data (see [references ⓘ](#)) were used in the production of this report:

MolProbity : 4.02b-467  
Mogul : 1.8.5 (274361), CSD as541be (2020)  
Xtriage (Phenix) : 1.13  
EDS : 2.35  
buster-report : 1.1.7 (2018)  
Percentile statistics : 20191225.v01 (using entries in the PDB archive December 25th 2019)  
Refmac : 5.8.0158  
CCP4 : 7.0.044 (Gargrove)  
Ideal geometry (proteins) : Engh & Huber (2001)  
Ideal geometry (DNA, RNA) : Parkinson et al. (1996)  
Validation Pipeline (wwPDB-VP) : 2.35

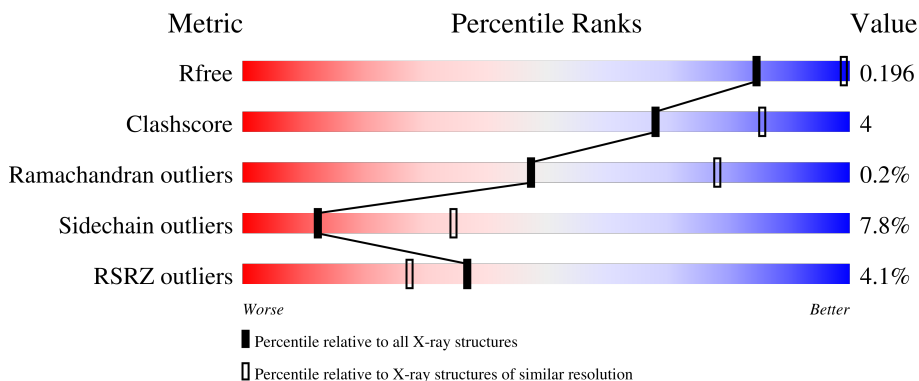
# 1 Overall quality at a glance

The following experimental techniques were used to determine the structure:

*X-RAY DIFFRACTION*

The reported resolution of this entry is 2.80 Å.

Percentile scores (ranging between 0-100) for global validation metrics of the entry are shown in the following graphic. The table shows the number of entries on which the scores are based.



Metric	Whole archive (#Entries)	Similar resolution (#Entries, resolution range(Å))
$R_{free}$	130704	3140 (2.80-2.80)
Clashscore	141614	3569 (2.80-2.80)
Ramachandran outliers	138981	3498 (2.80-2.80)
Sidechain outliers	138945	3500 (2.80-2.80)
RSRZ outliers	127900	3078 (2.80-2.80)

The table below summarises the geometric issues observed across the polymeric chains and their fit to the electron density. The red, orange, yellow and green segments of the lower bar indicate the fraction of residues that contain outliers for  $\geq 3$ , 2, 1 and 0 types of geometric quality criteria respectively. A grey segment represents the fraction of residues that are not modelled. The numeric value for each fraction is indicated below the corresponding segment, with a dot representing fractions  $\leq 5\%$ . The upper red bar (where present) indicates the fraction of residues that have poor fit to the electron density. The numeric value is given above the bar.

Mol	Chain	Length	Quality of chain
1	A	769	 2% 79% 10% • 9%
1	B	769	 4% 76% 12% • 10%
1	C	769	 4% 76% 12% • 11%

## 2 Entry composition

There are 3 unique types of molecules in this entry. The entry contains 17580 atoms, of which 0 are hydrogens and 0 are deuteriums.

In the tables below, the ZeroOcc column contains the number of atoms modelled with zero occupancy, the AltConf column contains the number of residues with at least one atom in alternate conformation and the Trace column contains the number of residues modelled with at most 2 atoms.

- Molecule 1 is a protein called Acetyl-CoA carboxylase.

Mol	Chain	Residues	Atoms					ZeroOcc	AltConf	Trace
			Total	C	N	O	S			
1	A	696	5561	3539	960	1045	17	0	1	0
1	B	690	5513	3510	949	1037	17	0	0	0
1	C	684	5468	3476	944	1031	17	0	0	0

There are 60 discrepancies between the modelled and reference sequences:

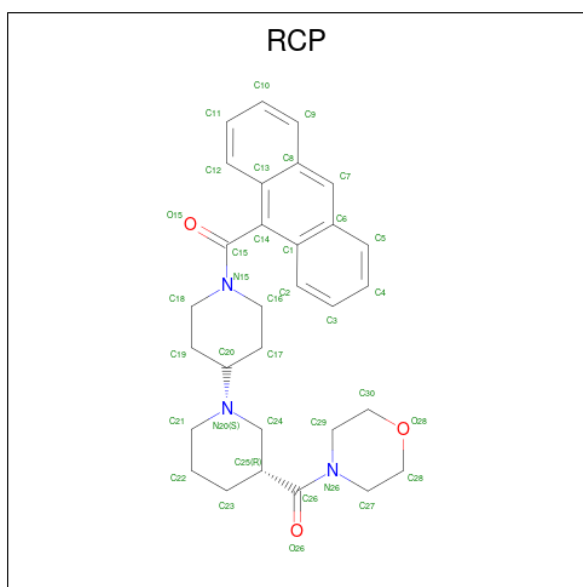
Chain	Residue	Modelled	Actual	Comment	Reference
A	1473	MET	-	expression tag	UNP Q00955
A	1474	ALA	-	expression tag	UNP Q00955
A	1475	SER	-	expression tag	UNP Q00955
A	1760	SER	PRO	engineered mutation	UNP Q00955
A	1762	LEU	ILE	engineered mutation	UNP Q00955
A	1765	VAL	MET	engineered mutation	UNP Q00955
A	1919	GLN	GLU	engineered mutation	UNP Q00955
A	1920	ALA	PRO	engineered mutation	UNP Q00955
A	1925	PHE	HIS	engineered mutation	UNP Q00955
A	2028	GLU	GLN	engineered mutation	UNP Q00955
A	2030	THR	MET	engineered mutation	UNP Q00955
A	2032	GLU	GLY	engineered mutation	UNP Q00955
A	2234	LEU	-	expression tag	UNP Q00955
A	2235	GLU	-	expression tag	UNP Q00955
A	2236	HIS	-	expression tag	UNP Q00955
A	2237	HIS	-	expression tag	UNP Q00955
A	2238	HIS	-	expression tag	UNP Q00955
A	2239	HIS	-	expression tag	UNP Q00955
A	2240	HIS	-	expression tag	UNP Q00955
A	2241	HIS	-	expression tag	UNP Q00955
B	1473	MET	-	expression tag	UNP Q00955
B	1474	ALA	-	expression tag	UNP Q00955
B	1475	SER	-	expression tag	UNP Q00955

*Continued on next page...*

*Continued from previous page...*

Chain	Residue	Modelled	Actual	Comment	Reference
B	1760	SER	PRO	engineered mutation	UNP Q00955
B	1762	LEU	ILE	engineered mutation	UNP Q00955
B	1765	VAL	MET	engineered mutation	UNP Q00955
B	1919	GLN	GLU	engineered mutation	UNP Q00955
B	1920	ALA	PRO	engineered mutation	UNP Q00955
B	1925	PHE	HIS	engineered mutation	UNP Q00955
B	2028	GLU	GLN	engineered mutation	UNP Q00955
B	2030	THR	MET	engineered mutation	UNP Q00955
B	2032	GLU	GLY	engineered mutation	UNP Q00955
B	2234	LEU	-	expression tag	UNP Q00955
B	2235	GLU	-	expression tag	UNP Q00955
B	2236	HIS	-	expression tag	UNP Q00955
B	2237	HIS	-	expression tag	UNP Q00955
B	2238	HIS	-	expression tag	UNP Q00955
B	2239	HIS	-	expression tag	UNP Q00955
B	2240	HIS	-	expression tag	UNP Q00955
B	2241	HIS	-	expression tag	UNP Q00955
C	1473	MET	-	expression tag	UNP Q00955
C	1474	ALA	-	expression tag	UNP Q00955
C	1475	SER	-	expression tag	UNP Q00955
C	1760	SER	PRO	engineered mutation	UNP Q00955
C	1762	LEU	ILE	engineered mutation	UNP Q00955
C	1765	VAL	MET	engineered mutation	UNP Q00955
C	1919	GLN	GLU	engineered mutation	UNP Q00955
C	1920	ALA	PRO	engineered mutation	UNP Q00955
C	1925	PHE	HIS	engineered mutation	UNP Q00955
C	2028	GLU	GLN	engineered mutation	UNP Q00955
C	2030	THR	MET	engineered mutation	UNP Q00955
C	2032	GLU	GLY	engineered mutation	UNP Q00955
C	2234	LEU	-	expression tag	UNP Q00955
C	2235	GLU	-	expression tag	UNP Q00955
C	2236	HIS	-	expression tag	UNP Q00955
C	2237	HIS	-	expression tag	UNP Q00955
C	2238	HIS	-	expression tag	UNP Q00955
C	2239	HIS	-	expression tag	UNP Q00955
C	2240	HIS	-	expression tag	UNP Q00955
C	2241	HIS	-	expression tag	UNP Q00955

- Molecule 2 is (3R)-1'-(9-ANTHRYLCARBONYL)-3-(MORPHOLIN-4-YLCARBONYL)-1, 4'-BIPIPERIDINE (three-letter code: RCP) (formula: C<sub>30</sub>H<sub>35</sub>N<sub>3</sub>O<sub>3</sub>).

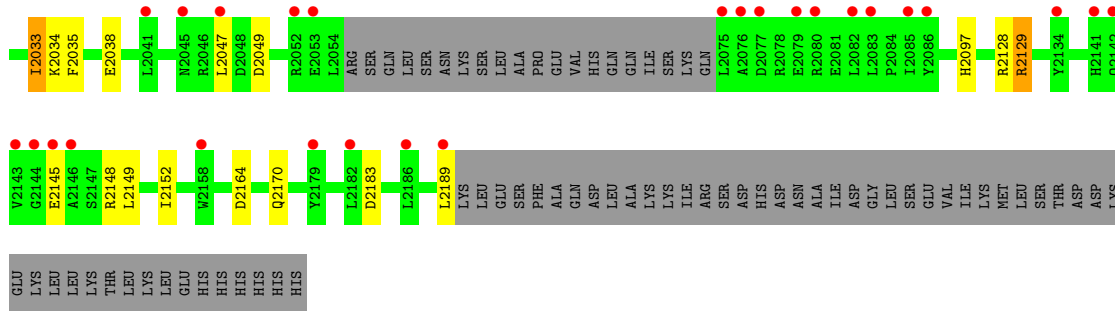


Mol	Chain	Residues	Atoms				ZeroOcc	AltConf
2	A	1	Total	C	N	O	0	0
			36	30	3	3		
2	B	1	Total	C	N	O	0	0
			36	30	3	3		
2	C	1	Total	C	N	O	0	0
			36	30	3	3		

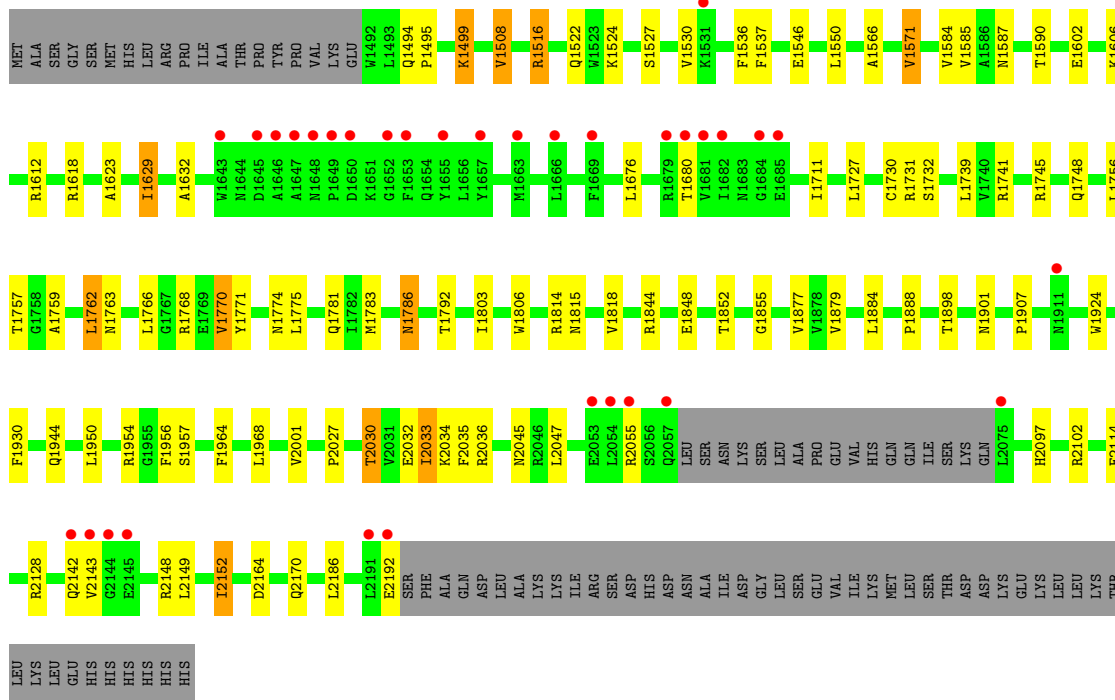
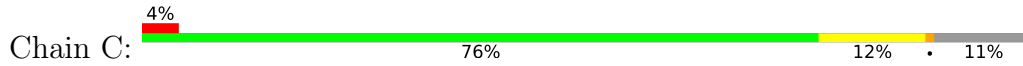
- Molecule 3 is water.

Mol	Chain	Residues	Atoms		ZeroOcc	AltConf
3	A	334	Total	O	0	0
			334	334		
3	B	297	Total	O	0	0
			297	297		
3	C	299	Total	O	0	0
			299	299		





• Molecule 1: Acetyl-CoA carboxylase



## 4 Data and refinement statistics

Property	Value	Source
Space group	C 1 2 1	Depositor
Cell constants a, b, c, $\alpha$ , $\beta$ , $\gamma$	246.50Å 123.11Å 146.44Å 90.00° 94.24° 90.00°	Depositor
Resolution (Å)	47.06 – 2.80 40.83 – 2.80	Depositor EDS
% Data completeness (in resolution range)	99.3 (47.06-2.80) 99.3 (40.83-2.80)	Depositor EDS
$R_{merge}$	0.09	Depositor
$R_{sym}$	(Not available)	Depositor
$\langle I/\sigma(I) \rangle$ <sup>1</sup>	3.24 (at 2.81Å)	Xtrriage
Refinement program	BUSTER 2.9.2	Depositor
R, $R_{free}$	0.171 , 0.203 0.166 , 0.196	Depositor DCC
$R_{free}$ test set	10701 reflections (10.02%)	wwPDB-VP
Wilson B-factor (Å <sup>2</sup> )	47.5	Xtrriage
Anisotropy	0.395	Xtrriage
Bulk solvent $k_{sol}$ (e/Å <sup>3</sup> ), $B_{sol}$ (Å <sup>2</sup> )	0.32 , 73.4	EDS
L-test for twinning <sup>2</sup>	$\langle  L  \rangle = 0.52$ , $\langle L^2 \rangle = 0.36$	Xtrriage
Estimated twinning fraction	No twinning to report.	Xtrriage
$F_o, F_c$ correlation	0.95	EDS
Total number of atoms	17580	wwPDB-VP
Average B, all atoms (Å <sup>2</sup> )	56.0	wwPDB-VP

Xtrriage's analysis on translational NCS is as follows: *The largest off-origin peak in the Patterson function is 2.82% of the height of the origin peak. No significant pseudotranslation is detected.*

<sup>1</sup>Intensities estimated from amplitudes.

<sup>2</sup>Theoretical values of  $\langle |L| \rangle$ ,  $\langle L^2 \rangle$  for acentric reflections are 0.5, 0.333 respectively for untwinned datasets, and 0.375, 0.2 for perfectly twinned datasets.



## 5 Model quality [i](#)

### 5.1 Standard geometry [i](#)

Bond lengths and bond angles in the following residue types are not validated in this section: RCP

The Z score for a bond length (or angle) is the number of standard deviations the observed value is removed from the expected value. A bond length (or angle) with  $|Z| > 5$  is considered an outlier worth inspection. RMSZ is the root-mean-square of all Z scores of the bond lengths (or angles).

Mol	Chain	Bond lengths		Bond angles	
		RMSZ	# Z  >5	RMSZ	# Z  >5
1	A	0.50	0/5689	0.72	0/7704
1	B	0.50	0/5633	0.72	0/7631
1	C	0.50	0/5584	0.72	0/7559
All	All	0.50	0/16906	0.72	0/22894

There are no bond length outliers.

There are no bond angle outliers.

There are no chirality outliers.

There are no planarity outliers.

### 5.2 Too-close contacts [i](#)

In the following table, the Non-H and H(model) columns list the number of non-hydrogen atoms and hydrogen atoms in the chain respectively. The H(added) column lists the number of hydrogen atoms added and optimized by MolProbity. The Clashes column lists the number of clashes within the asymmetric unit, whereas Symm-Clashes lists symmetry-related clashes.

Mol	Chain	Non-H	H(model)	H(added)	Clashes	Symm-Clashes
1	A	5561	0	5492	36	0
1	B	5513	0	5450	51	0
1	C	5468	0	5401	49	0
2	A	36	0	35	1	0
2	B	36	0	35	2	0
2	C	36	0	35	2	0
3	A	334	0	0	2	0
3	B	297	0	0	3	0
3	C	299	0	0	4	0
All	All	17580	0	16448	126	0

The all-atom clashscore is defined as the number of clashes found per 1000 atoms (including hydrogen atoms). The all-atom clashscore for this structure is 4.

The worst 5 of 126 close contacts within the same asymmetric unit are listed below, sorted by their clash magnitude.

Atom-1	Atom-2	Interatomic distance (Å)	Clash overlap (Å)
1:B:1730:CYS:HA	1:B:1752:GLN:HE21	1.44	0.82
1:C:1763:ASN:HD21	1:C:1771:TYR:H	1.25	0.81
1:A:1763:ASN:HD21	1:A:1771:TYR:H	1.27	0.81
1:B:1763:ASN:HD21	1:B:1771:TYR:H	1.30	0.78
1:B:1815:ASN:H	1:B:1944:GLN:HE22	1.31	0.77

There are no symmetry-related clashes.

## 5.3 Torsion angles [i](#)

### 5.3.1 Protein backbone [i](#)

In the following table, the Percentiles column shows the percent Ramachandran outliers of the chain as a percentile score with respect to all X-ray entries followed by that with respect to entries of similar resolution.

The Analysed column shows the number of residues for which the backbone conformation was analysed, and the total number of residues.

Mol	Chain	Analysed	Favoured	Allowed	Outliers	Percentiles	
1	A	693/769 (90%)	663 (96%)	28 (4%)	2 (0%)	41	72
1	B	686/769 (89%)	656 (96%)	28 (4%)	2 (0%)	41	72
1	C	680/769 (88%)	653 (96%)	26 (4%)	1 (0%)	51	81
All	All	2059/2307 (89%)	1972 (96%)	82 (4%)	5 (0%)	47	78

All (5) Ramachandran outliers are listed below:

Mol	Chain	Res	Type
1	A	2143	VAL
1	C	2143	VAL
1	A	1731	ARG
1	B	1481	ARG
1	B	1731	ARG

### 5.3.2 Protein sidechains [i](#)

In the following table, the Percentiles column shows the percent sidechain outliers of the chain as a percentile score with respect to all X-ray entries followed by that with respect to entries of similar resolution.

The Analysed column shows the number of residues for which the sidechain conformation was analysed, and the total number of residues.

Mol	Chain	Analysed	Rotameric	Outliers	Percentiles	
1	A	591/658 (90%)	552 (93%)	39 (7%)	16	44
1	B	586/658 (89%)	535 (91%)	51 (9%)	10	30
1	C	581/658 (88%)	534 (92%)	47 (8%)	11	33
All	All	1758/1974 (89%)	1621 (92%)	137 (8%)	12	35

5 of 137 residues with a non-rotameric sidechain are listed below:

Mol	Chain	Res	Type
1	C	1786	ASN
1	C	1884	LEU
1	C	2047	LEU
1	B	1571	VAL
1	B	1555	ARG

Sometimes sidechains can be flipped to improve hydrogen bonding and reduce clashes. 5 of 46 such sidechains are listed below:

Mol	Chain	Res	Type
1	B	1941	ASN
1	C	1748	GLN
1	B	1944	GLN
1	C	1517	GLN
1	C	1763	ASN

### 5.3.3 RNA [i](#)

There are no RNA molecules in this entry.

## 5.4 Non-standard residues in protein, DNA, RNA chains [i](#)

There are no non-standard protein/DNA/RNA residues in this entry.

## 5.5 Carbohydrates [i](#)

There are no monosaccharides in this entry.

## 5.6 Ligand geometry [i](#)

3 ligands are modelled in this entry.

In the following table, the Counts columns list the number of bonds (or angles) for which Mogul statistics could be retrieved, the number of bonds (or angles) that are observed in the model and the number of bonds (or angles) that are defined in the Chemical Component Dictionary. The Link column lists molecule types, if any, to which the group is linked. The Z score for a bond length (or angle) is the number of standard deviations the observed value is removed from the expected value. A bond length (or angle) with  $|Z| > 2$  is considered an outlier worth inspection. RMSZ is the root-mean-square of all Z scores of the bond lengths (or angles).

Mol	Type	Chain	Res	Link	Bond lengths			Bond angles		
					Counts	RMSZ	# Z  > 2	Counts	RMSZ	# Z  > 2
2	RCP	B	1	-	40,41,41	0.75	0	52,58,58	2.72	5 (9%)
2	RCP	C	1	-	40,41,41	0.74	0	52,58,58	2.67	8 (15%)
2	RCP	A	1	-	40,41,41	0.74	1 (2%)	52,58,58	3.09	8 (15%)

In the following table, the Chirals column lists the number of chiral outliers, the number of chiral centers analysed, the number of these observed in the model and the number defined in the Chemical Component Dictionary. Similar counts are reported in the Torsion and Rings columns. '-' means no outliers of that kind were identified.

Mol	Type	Chain	Res	Link	Chirals	Torsions	Rings
2	RCP	B	1	-	-	2/20/48/48	1/6/6/6
2	RCP	C	1	-	-	2/20/48/48	0/6/6/6
2	RCP	A	1	-	-	3/20/48/48	0/6/6/6

All (1) bond length outliers are listed below:

Mol	Chain	Res	Type	Atoms	Z	Observed(Å)	Ideal(Å)
2	A	1	RCP	C7-C6	-2.02	1.39	1.43

The worst 5 of 21 bond angle outliers are listed below:

Mol	Chain	Res	Type	Atoms	Z	Observed(°)	Ideal(°)
2	A	1	RCP	C21-N20-C24	20.03	127.95	108.19
2	B	1	RCP	C21-N20-C24	17.17	125.13	108.19
2	C	1	RCP	C21-N20-C24	16.44	124.40	108.19

*Continued on next page...*

*Continued from previous page...*

Mol	Chain	Res	Type	Atoms	Z	Observed(°)	Ideal(°)
2	A	1	RCP	C23-C25-C24	3.43	116.06	109.92
2	A	1	RCP	C19-C18-N15	-3.36	105.71	110.82

There are no chirality outliers.

5 of 7 torsion outliers are listed below:

Mol	Chain	Res	Type	Atoms
2	B	1	RCP	C19-C20-N20-C21
2	C	1	RCP	C19-C20-N20-C21
2	A	1	RCP	C17-C20-N20-C24
2	B	1	RCP	C17-C20-N20-C21
2	A	1	RCP	C19-C20-N20-C21

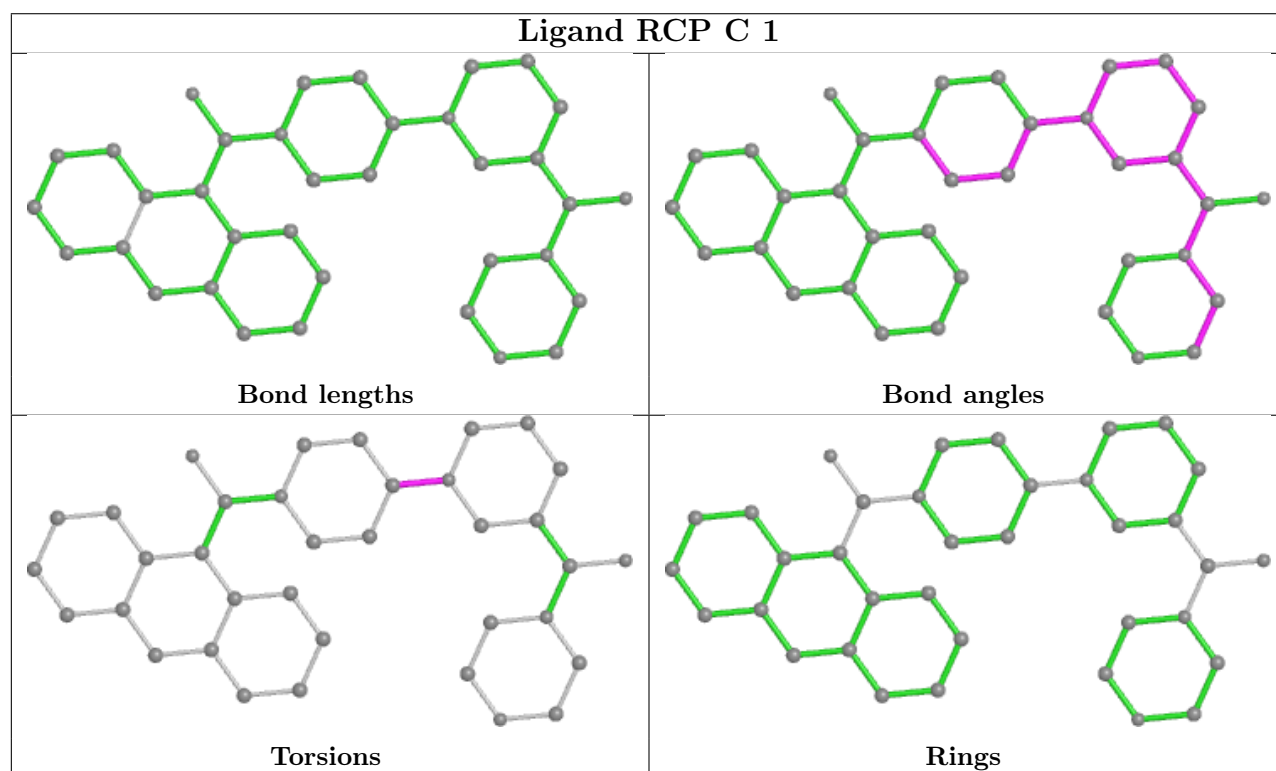
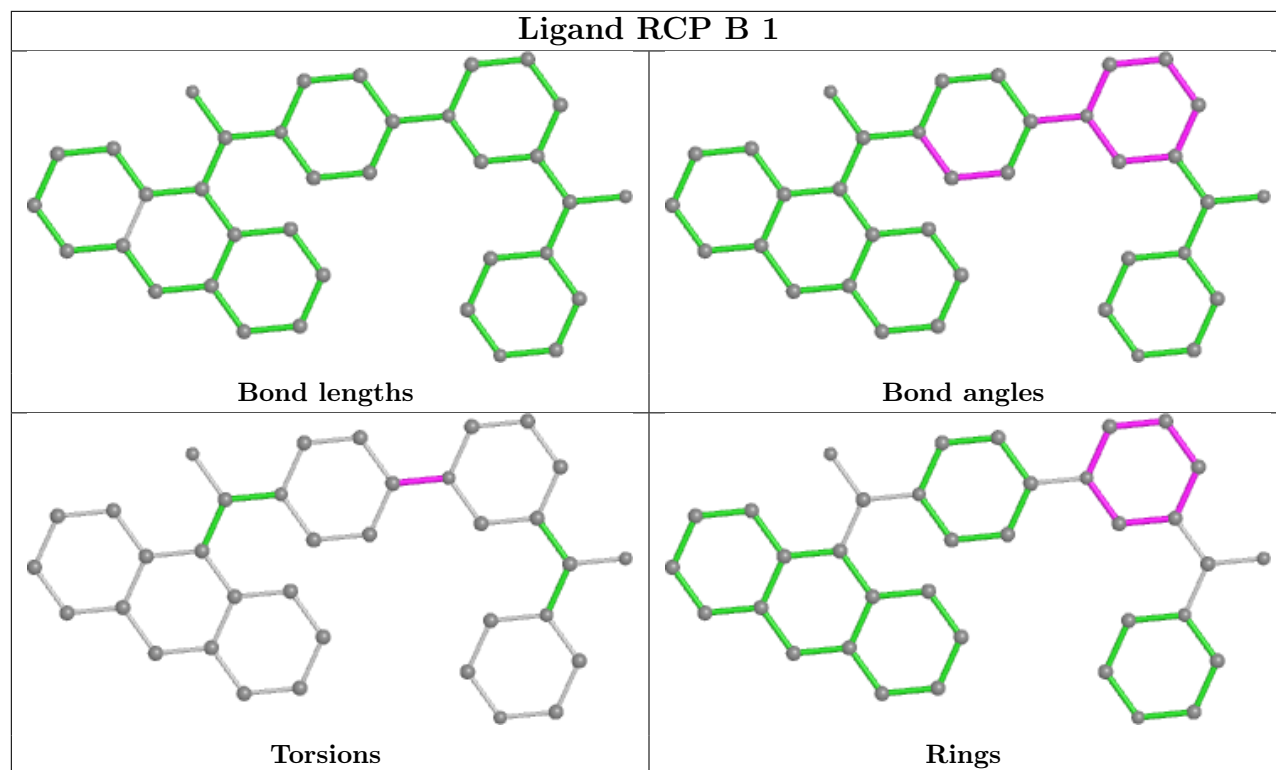
All (1) ring outliers are listed below:

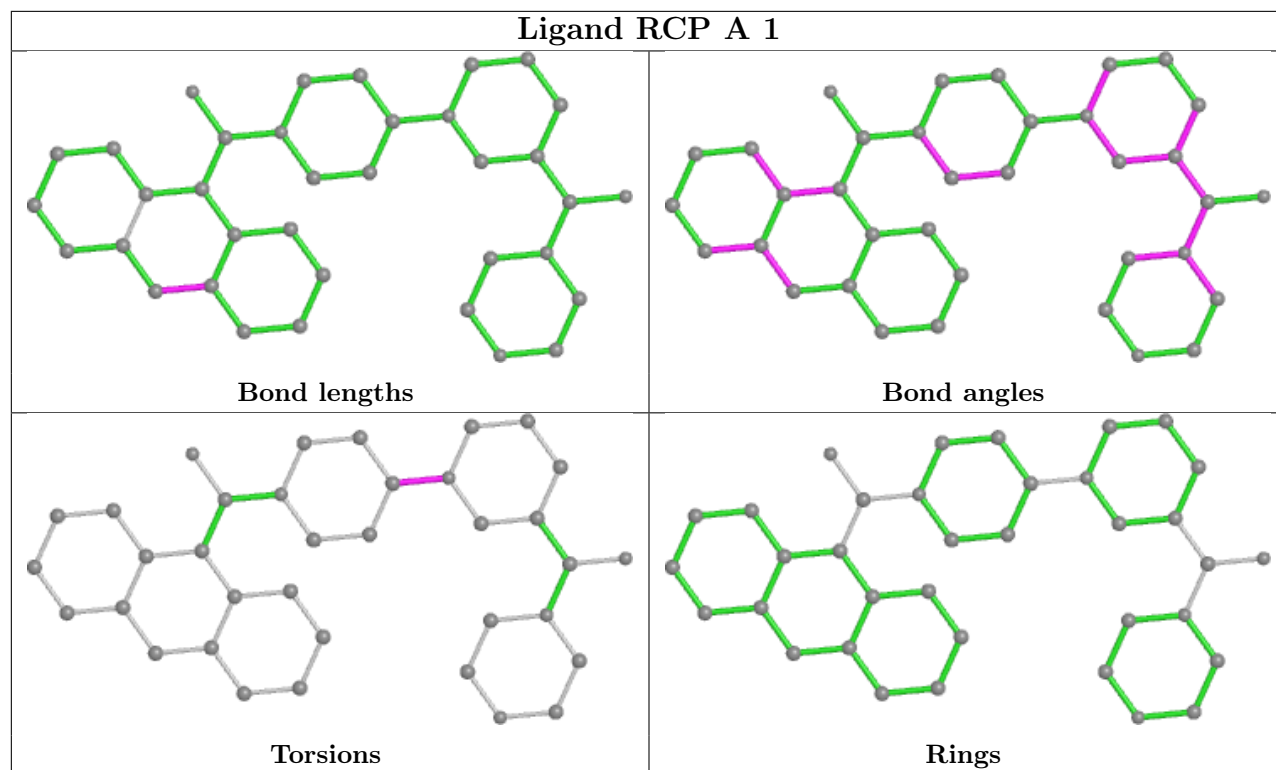
Mol	Chain	Res	Type	Atoms
2	B	1	RCP	C21-C22-C23-C24-C25-N20

3 monomers are involved in 5 short contacts:

Mol	Chain	Res	Type	Clashes	Symm-Clashes
2	B	1	RCP	2	0
2	C	1	RCP	2	0
2	A	1	RCP	1	0

The following is a two-dimensional graphical depiction of Mogul quality analysis of bond lengths, bond angles, torsion angles, and ring geometry for all instances of the Ligand of Interest. In addition, ligands with molecular weight > 250 and outliers as shown on the validation Tables will also be included. For torsion angles, if less than 5% of the Mogul distribution of torsion angles is within 10 degrees of the torsion angle in question, then that torsion angle is considered an outlier. Any bond that is central to one or more torsion angles identified as an outlier by Mogul will be highlighted in the graph. For rings, the root-mean-square deviation (RMSD) between the ring in question and similar rings identified by Mogul is calculated over all ring torsion angles. If the average RMSD is greater than 60 degrees and the minimal RMSD between the ring in question and any Mogul-identified rings is also greater than 60 degrees, then that ring is considered an outlier. The outliers are highlighted in purple. The color gray indicates Mogul did not find sufficient equivalents in the CSD to analyse the geometry.





## 5.7 Other polymers [i](#)

There are no such residues in this entry.

## 5.8 Polymer linkage issues [i](#)

There are no chain breaks in this entry.

## 6 Fit of model and data [i](#)

### 6.1 Protein, DNA and RNA chains [i](#)

In the following table, the column labelled ‘#RSRZ > 2’ contains the number (and percentage) of RSRZ outliers, followed by percent RSRZ outliers for the chain as percentile scores relative to all X-ray entries and entries of similar resolution. The OWAB column contains the minimum, median, 95<sup>th</sup> percentile and maximum values of the occupancy-weighted average B-factor per residue. The column labelled ‘Q < 0.9’ lists the number of (and percentage) of residues with an average occupancy less than 0.9.

Mol	Chain	Analysed	<RSRZ>	#RSRZ>2	OWAB(Å <sup>2</sup> )	Q<0.9
1	A	696/769 (90%)	-0.33	18 (2%) 56 46	23, 44, 106, 143	0
1	B	690/769 (89%)	-0.15	33 (4%) 30 21	27, 49, 111, 153	0
1	C	684/769 (88%)	-0.21	33 (4%) 30 21	25, 47, 115, 152	0
All	All	2070/2307 (89%)	-0.23	84 (4%) 37 27	23, 47, 111, 153	0

The worst 5 of 84 RSRZ outliers are listed below:

Mol	Chain	Res	Type	RSRZ
1	C	2143	VAL	5.6
1	A	2144	GLY	5.3
1	B	2075	LEU	4.9
1	B	2082	LEU	4.8
1	A	2194	PHE	4.7

### 6.2 Non-standard residues in protein, DNA, RNA chains [i](#)

There are no non-standard protein/DNA/RNA residues in this entry.

### 6.3 Carbohydrates [i](#)

There are no monosaccharides in this entry.

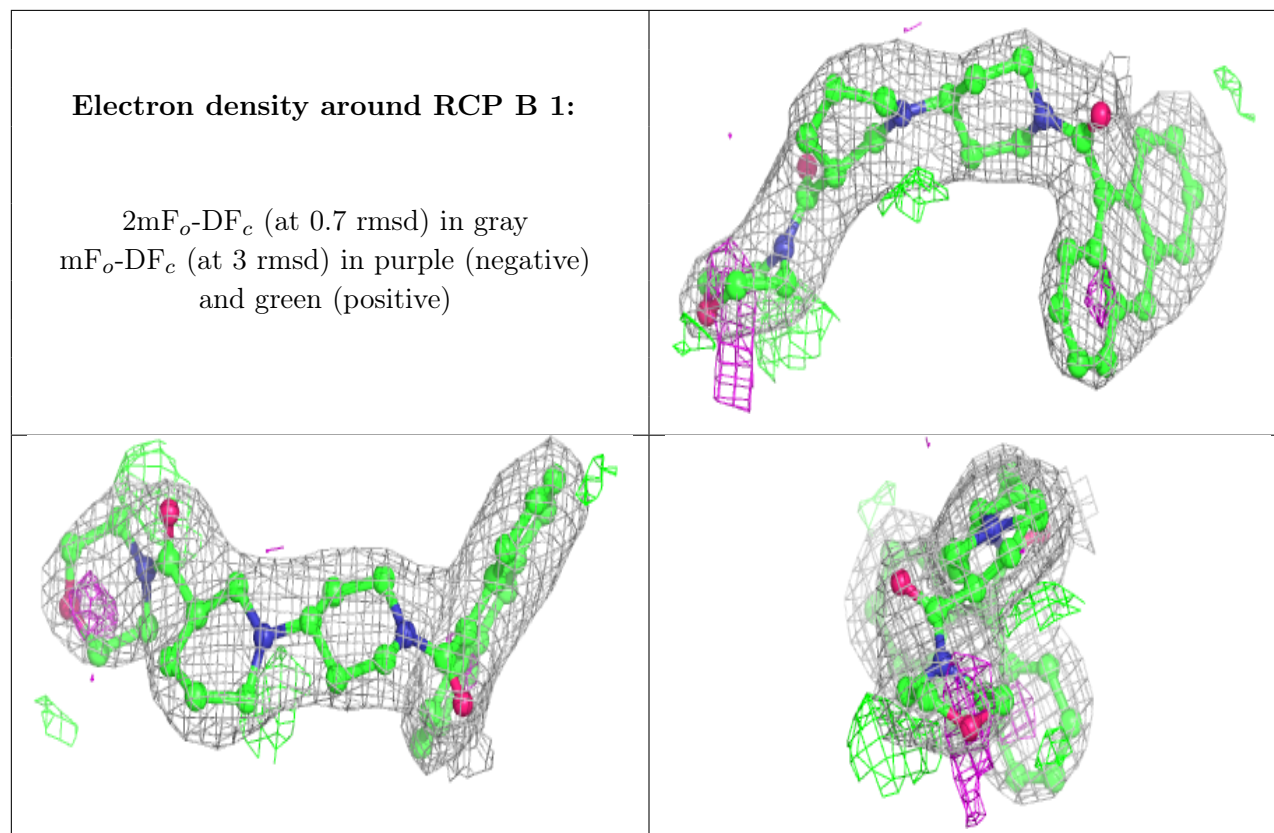
### 6.4 Ligands [i](#)

In the following table, the Atoms column lists the number of modelled atoms in the group and the number defined in the chemical component dictionary. The B-factors column lists the minimum, median, 95<sup>th</sup> percentile and maximum values of B factors of atoms in the group. The column labelled ‘Q < 0.9’ lists the number of atoms with occupancy less than 0.9.



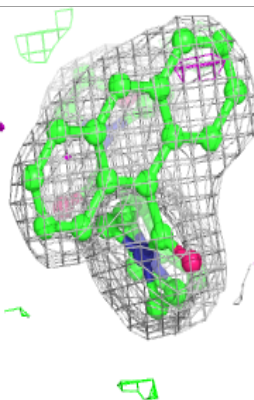
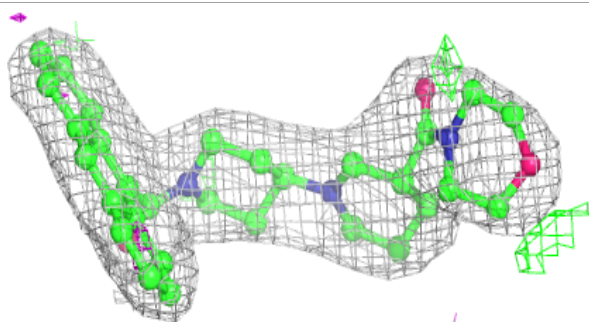
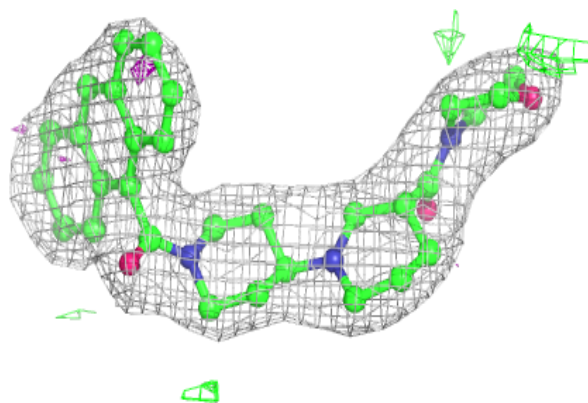
Mol	Type	Chain	Res	Atoms	RSCC	RSR	B-factors( $\text{\AA}^2$ )	Q<0.9
2	RCP	B	1	36/36	0.95	0.17	41,60,64,65	0
2	RCP	A	1	36/36	0.96	0.15	36,47,56,57	0
2	RCP	C	1	36/36	0.97	0.15	48,54,62,63	0

The following is a graphical depiction of the model fit to experimental electron density of all instances of the Ligand of Interest. In addition, ligands with molecular weight > 250 and outliers as shown on the geometry validation Tables will also be included. Each fit is shown from different orientation to approximate a three-dimensional view.

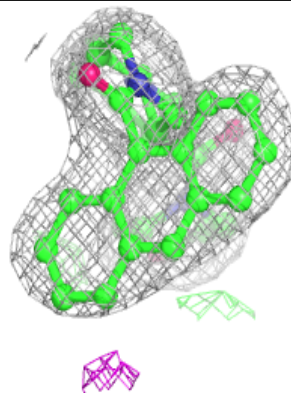
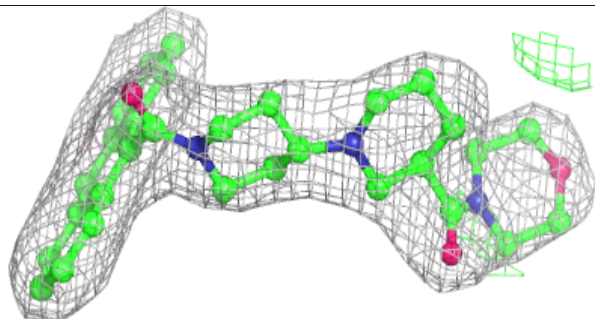
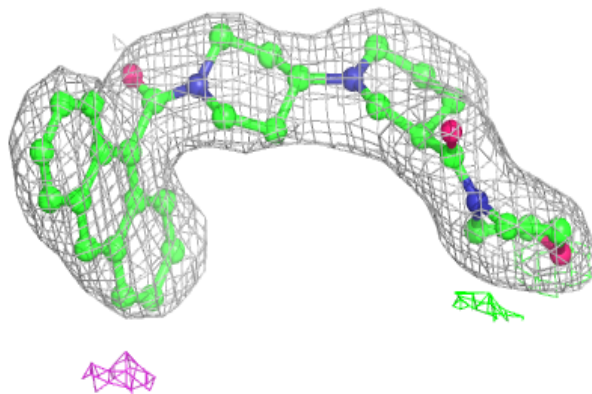


**Electron density around RCP A 1:**

$2mF_o-DF_c$  (at 0.7 rmsd) in gray  
 $mF_o-DF_c$  (at 3 rmsd) in purple (negative)  
and green (positive)

**Electron density around RCP C 1:**

$2mF_o-DF_c$  (at 0.7 rmsd) in gray  
 $mF_o-DF_c$  (at 3 rmsd) in purple (negative)  
and green (positive)



## 6.5 Other polymers [i](#)

There are no such residues in this entry.