



Full wwPDB X-ray Structure Validation Report ⓘ

May 24, 2020 – 10:55 pm BST

PDB ID : 3TPV
Title : Structure of pHipA bound to ADP
Authors : Schumacher, M.A.; Link, T.M.; Brennan, R.G.
Deposited on : 2011-09-08
Resolution : 2.30 Å(reported)

This is a Full wwPDB X-ray Structure Validation Report for a publicly released PDB entry.

We welcome your comments at validation@mail.wwpdb.org

A user guide is available at

<https://www.wwpdb.org/validation/2017/XrayValidationReportHelp>

with specific help available everywhere you see the ⓘ symbol.

The following versions of software and data (see [references ⓘ](#)) were used in the production of this report:

MolProbity : 4.02b-467
Mogul : 1.8.5 (274361), CSD as541be (2020)
Xtriage (Phenix) : 1.13
EDS : 2.11
Percentile statistics : 20191225.v01 (using entries in the PDB archive December 25th 2019)
Refmac : 5.8.0158
CCP4 : 7.0.044 (Gargrove)
Ideal geometry (proteins) : Engh & Huber (2001)
Ideal geometry (DNA, RNA) : Parkinson et al. (1996)
Validation Pipeline (wwPDB-VP) : 2.11

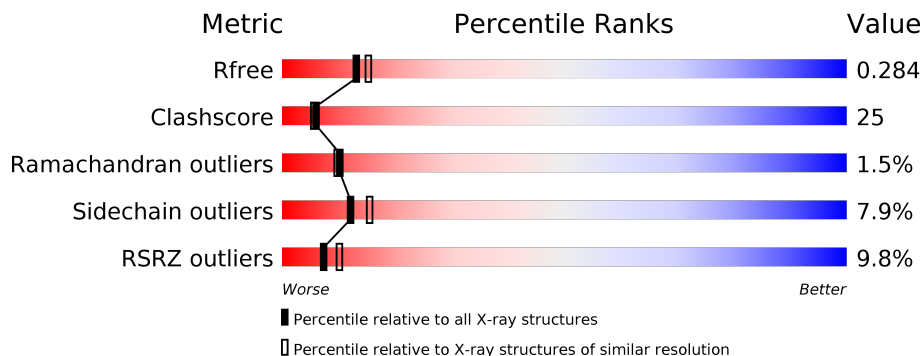
1 Overall quality at a glance

The following experimental techniques were used to determine the structure:

X-RAY DIFFRACTION

The reported resolution of this entry is 2.30 Å.

Percentile scores (ranging between 0-100) for global validation metrics of the entry are shown in the following graphic. The table shows the number of entries on which the scores are based.



Metric	Whole archive (#Entries)	Similar resolution (#Entries, resolution range(Å))
R_{free}	130704	5042 (2.30-2.30)
Clashscore	141614	5643 (2.30-2.30)
Ramachandran outliers	138981	5575 (2.30-2.30)
Sidechain outliers	138945	5575 (2.30-2.30)
RSRZ outliers	127900	4938 (2.30-2.30)

The table below summarises the geometric issues observed across the polymeric chains and their fit to the electron density. The red, orange, yellow and green segments on the lower bar indicate the fraction of residues that contain outliers for ≥ 3 , 2, 1 and 0 types of geometric quality criteria respectively. A grey segment represents the fraction of residues that are not modelled. The numeric value for each fraction is indicated below the corresponding segment, with a dot representing fractions $\leq 5\%$. The upper red bar (where present) indicates the fraction of residues that have poor fit to the electron density. The numeric value is given above the bar.

Mol	Chain	Length	Quality of chain
1	B	440	

2 Entry composition [i](#)

There are 4 unique types of molecules in this entry. The entry contains 3500 atoms, of which 0 are hydrogens and 0 are deuteriums.

In the tables below, the ZeroOcc column contains the number of atoms modelled with zero occupancy, the AltConf column contains the number of residues with at least one atom in alternate conformation and the Trace column contains the number of residues modelled with at most 2 atoms.

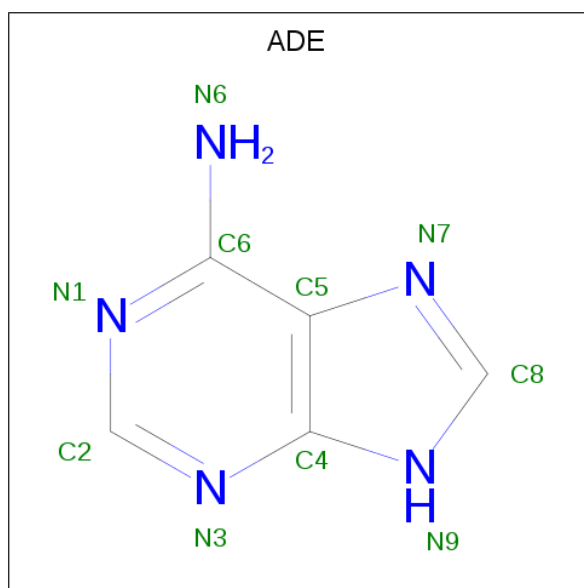
- Molecule 1 is a protein called Serine/threonine-protein kinase HipA.

Mol	Chain	Residues	Atoms						ZeroOcc	AltConf	Trace
			Total	C	N	O	P	S			
1	B	421	3329	2132	582	600	1	14	0	0	0

There is a discrepancy between the modelled and reference sequences:

Chain	Residue	Modelled	Actual	Comment	Reference
B	243	ARG	GLU	CONFLICT	UNP P23874

- Molecule 2 is ADENINE (three-letter code: ADE) (formula: C₅H₅N₅).



Mol	Chain	Residues	Atoms			ZeroOcc	AltConf
			Total	C	N		
2	B	1	10	5	5	0	0

- Molecule 3 is SULFATE ION (three-letter code: SO4) (formula: O₄S).



Mol	Chain	Residues	Atoms			ZeroOcc	AltConf
			Total	O	S		
3	B	1	5	4	1	0	0

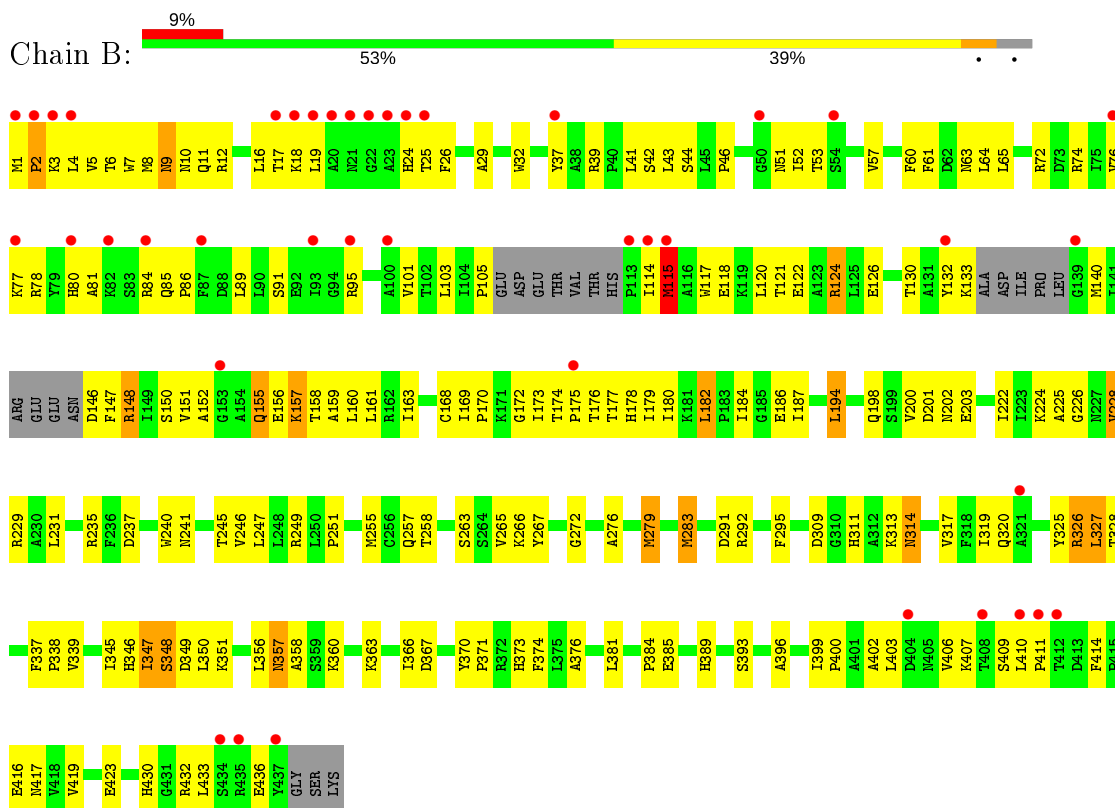
- Molecule 4 is water.

Mol	Chain	Residues	Atoms		ZeroOcc	AltConf
			Total	O		
4	B	156	156	156	0	0

3 Residue-property plots [i](#)

These plots are drawn for all protein, RNA and DNA chains in the entry. The first graphic for a chain summarises the proportions of the various outlier classes displayed in the second graphic. The second graphic shows the sequence view annotated by issues in geometry and electron density. Residues are color-coded according to the number of geometric quality criteria for which they contain at least one outlier: green = 0, yellow = 1, orange = 2 and red = 3 or more. A red dot above a residue indicates a poor fit to the electron density ($RSRZ > 2$). Stretches of 2 or more consecutive residues without any outlier are shown as a green connector. Residues present in the sample, but not in the model, are shown in grey.

- Molecule 1: Serine/threonine-protein kinase HipA



4 Data and refinement statistics

Property	Value	Source
Space group	P 65	Depositor
Cell constants a, b, c, α , β , γ	133.70 Å 133.70 Å 48.50 Å 90.00° 90.00° 120.00°	Depositor
Resolution (Å)	38.60 – 2.30 38.60 – 1.90	Depositor EDS
% Data completeness (in resolution range)	99.0 (38.60-2.30) 99.0 (38.60-1.90)	Depositor EDS
R_{merge}	(Not available)	Depositor
R_{sym}	(Not available)	Depositor
$\langle I/\sigma(I) \rangle$ ¹	1.72 (at 1.89 Å)	Xtrriage
Refinement program	CNS 1.2	Depositor
R, R_{free}	0.239 , 0.289 0.254 , 0.284	Depositor DCC
R_{free} test set	2853 reflections (7.30%)	wwPDB-VP
Wilson B-factor (Å ²)	36.2	Xtrriage
Anisotropy	0.293	Xtrriage
Bulk solvent k_{sol} (e/Å ³), B_{sol} (Å ²)	0.34 , 48.8	EDS
L-test for twinning ²	$\langle L \rangle = 0.48$, $\langle L^2 \rangle = 0.31$	Xtrriage
Estimated twinning fraction	0.032 for h,-h-k,-l	Xtrriage
F_o, F_c correlation	0.93	EDS
Total number of atoms	3500	wwPDB-VP
Average B, all atoms (Å ²)	45.0	wwPDB-VP

Xtrriage's analysis on translational NCS is as follows: *The largest off-origin peak in the Patterson function is 3.14% of the height of the origin peak. No significant pseudotranslation is detected.*

¹ Intensities estimated from amplitudes.

² Theoretical values of $\langle |L| \rangle$, $\langle L^2 \rangle$ for acentric reflections are 0.5, 0.333 respectively for untwinned datasets, and 0.375, 0.2 for perfectly twinned datasets.

5 Model quality [i](#)

5.1 Standard geometry [i](#)

Bond lengths and bond angles in the following residue types are not validated in this section: ADE, SO4, SEP

The Z score for a bond length (or angle) is the number of standard deviations the observed value is removed from the expected value. A bond length (or angle) with $|Z| > 5$ is considered an outlier worth inspection. RMSZ is the root-mean-square of all Z scores of the bond lengths (or angles).

Mol	Chain	Bond lengths		Bond angles	
		RMSZ	# Z >5	RMSZ	# Z >5
1	B	0.76	1/3390 (0.0%)	0.58	0/4587

All (1) bond length outliers are listed below:

Mol	Chain	Res	Type	Atoms	Z	Observed(Å)	Ideal(Å)
1	B	279	MET	CG-SD	7.94	2.01	1.81

There are no bond angle outliers.

There are no chirality outliers.

There are no planarity outliers.

5.2 Too-close contacts [i](#)

In the following table, the Non-H and H(model) columns list the number of non-hydrogen atoms and hydrogen atoms in the chain respectively. The H(added) column lists the number of hydrogen atoms added and optimized by MolProbity. The Clashes column lists the number of clashes within the asymmetric unit, whereas Symm-Clashes lists symmetry related clashes.

Mol	Chain	Non-H	H(model)	H(added)	Clashes	Symm-Clashes
1	B	3329	0	3383	167	0
2	B	10	0	4	0	0
3	B	5	0	0	0	0
4	B	156	0	0	15	0
All	All	3500	0	3387	167	0

The all-atom clashscore is defined as the number of clashes found per 1000 atoms (including hydrogen atoms). The all-atom clashscore for this structure is 25.

All (167) close contacts within the same asymmetric unit are listed below, sorted by their clash

magnitude.

Atom-1	Atom-2	Interatomic distance (Å)	Clash overlap (Å)
1:B:279:MET:SD	1:B:279:MET:CG	2.01	1.46
1:B:159:ALA:HB1	1:B:176:THR:HG21	1.35	1.04
1:B:198:GLN:NE2	1:B:417:ASN:HD21	1.77	0.82
1:B:198:GLN:HE22	1:B:417:ASN:HD21	1.30	0.78
1:B:241:ASN:ND2	1:B:246:VAL:H	1.81	0.77
1:B:279:MET:CB	1:B:279:MET:SD	2.75	0.74
1:B:279:MET:HE1	1:B:295:PHE:HB3	1.71	0.72
1:B:326:ARG:HD3	4:B:444:HOH:O	1.90	0.71
1:B:155:GLN:HG3	1:B:184:ILE:HG12	1.73	0.70
1:B:114:ILE:O	1:B:115:MET:HB2	1.90	0.70
1:B:241:ASN:HD21	1:B:246:VAL:H	1.40	0.68
1:B:41:LEU:HD11	1:B:101:VAL:HG12	1.75	0.68
1:B:345:ILE:HG22	1:B:346:HIS:N	2.10	0.66
1:B:95:ARG:HG3	1:B:173:ILE:HD12	1.77	0.65
1:B:1:MET:HB3	1:B:18:LYS:H	1.61	0.65
1:B:279:MET:CE	1:B:279:MET:CG	2.75	0.65
1:B:235:ARG:HB3	1:B:237:ASP:OD1	1.97	0.64
1:B:345:ILE:CG2	1:B:349:ASP:HB2	2.27	0.64
1:B:114:ILE:HG13	1:B:115:MET:H	1.62	0.64
1:B:148:ARG:HD2	4:B:546:HOH:O	1.99	0.63
1:B:85:GLN:O	1:B:89:LEU:HD23	2.00	0.61
1:B:346:HIS:HD2	4:B:459:HOH:O	1.84	0.61
1:B:160:LEU:O	1:B:176:THR:HG23	2.01	0.61
1:B:202:ASN:ND2	1:B:338:PRO:HG2	2.16	0.60
1:B:200:VAL:HG13	1:B:231:LEU:HB2	1.84	0.60
1:B:241:ASN:HD21	1:B:246:VAL:N	2.00	0.59
1:B:407:LYS:HE3	1:B:419:VAL:HG11	1.86	0.58
1:B:18:LYS:HG2	1:B:19:LEU:N	2.19	0.58
1:B:345:ILE:HG22	1:B:346:HIS:H	1.68	0.58
1:B:3:LYS:HG3	1:B:17:THR:CG2	2.35	0.57
1:B:114:ILE:HG21	1:B:173:ILE:HG22	1.84	0.57
1:B:9:ASN:C	1:B:10:ASN:HD22	2.08	0.57
1:B:279:MET:CE	1:B:292:ARG:HA	2.35	0.57
1:B:1:MET:HB3	1:B:18:LYS:N	2.19	0.57
1:B:350:LEU:HB3	1:B:366:ILE:HD12	1.87	0.56
1:B:357:ASN:ND2	4:B:596:HOH:O	2.39	0.55
1:B:279:MET:HE1	1:B:292:ARG:HA	1.88	0.55
1:B:155:GLN:HB2	4:B:540:HOH:O	2.06	0.55
1:B:39:ARG:HD3	1:B:319:ILE:HG22	1.88	0.54
1:B:257:GLN:HA	4:B:467:HOH:O	2.07	0.54
1:B:187:ILE:HB	1:B:194:LEU:HB2	1.89	0.54

Continued on next page...

Continued from previous page...

Atom-1	Atom-2	Interatomic distance (Å)	Clash overlap (Å)
1:B:43:LEU:HD21	1:B:325:TYR:CD1	2.43	0.54
1:B:132:TYR:O	1:B:182:LEU:HD13	2.07	0.54
1:B:65:LEU:HD11	1:B:86:PRO:HA	1.90	0.54
1:B:399:ILE:O	1:B:403:LEU:HG	2.08	0.53
1:B:241:ASN:ND2	1:B:246:VAL:N	2.54	0.53
1:B:117:TRP:NE1	1:B:163:ILE:HG13	2.22	0.53
1:B:198:GLN:NE2	1:B:417:ASN:ND2	2.52	0.52
1:B:148:ARG:HD3	1:B:267:TYR:CZ	2.45	0.52
1:B:161:LEU:HD21	1:B:163:ILE:HD11	1.91	0.52
1:B:4:LEU:HD11	1:B:91:SER:HB2	1.92	0.51
1:B:276:ALA:HA	1:B:381:LEU:HD21	1.93	0.51
1:B:283:MET:HE2	1:B:283:MET:HA	1.91	0.51
1:B:358:ALA:HB2	1:B:363:LYS:HG2	1.92	0.51
1:B:399:ILE:HB	1:B:430:HIS:CD2	2.45	0.51
1:B:158:THR:CG2	1:B:180:ILE:HB	2.40	0.51
1:B:407:LYS:HA	1:B:410:LEU:HD12	1.93	0.51
1:B:363:LYS:HG3	1:B:373:HIS:CD2	2.46	0.50
1:B:2:PRO:O	1:B:17:THR:HG22	2.10	0.50
1:B:18:LYS:HG2	1:B:19:LEU:H	1.75	0.50
1:B:399:ILE:HD13	1:B:430:HIS:HB2	1.94	0.50
1:B:152:ALA:HB3	4:B:524:HOH:O	2.12	0.49
1:B:396:ALA:HB2	1:B:433:LEU:HB3	1.95	0.49
1:B:8:MET:O	1:B:9:ASN:HB2	2.14	0.48
1:B:399:ILE:HB	1:B:400:PRO:HD3	1.95	0.48
1:B:6:THR:HA	1:B:103:LEU:HD23	1.95	0.48
1:B:118:GLU:HG2	1:B:169:ILE:O	2.14	0.48
1:B:72:ARG:O	1:B:76:VAL:HG23	2.14	0.48
1:B:194:LEU:CD1	1:B:345:ILE:HD11	2.44	0.48
1:B:26:PHE:O	1:B:51:ASN:HA	2.14	0.48
1:B:337:PHE:HB2	1:B:338:PRO:HD3	1.96	0.48
1:B:345:ILE:CG2	1:B:346:HIS:N	2.76	0.48
1:B:179:ILE:HG13	1:B:235:ARG:HG2	1.96	0.47
1:B:222:ILE:HD13	1:B:229:ARG:HH12	1.79	0.47
1:B:201:ASP:OD2	1:B:229:ARG:NH1	2.48	0.47
1:B:12:ARG:NH2	4:B:529:HOH:O	2.48	0.47
1:B:126:GLU:O	1:B:130:THR:HG23	2.14	0.47
1:B:147:PHE:C	1:B:148:ARG:HG2	2.35	0.47
1:B:265:VAL:O	1:B:272:GLY:HA3	2.14	0.47
1:B:411:PRO:HG2	1:B:414:PHE:HB2	1.97	0.47
1:B:203:GLU:HG2	1:B:231:LEU:HD21	1.97	0.47
1:B:229:ARG:HH11	1:B:229:ARG:HG3	1.80	0.47

Continued on next page...

Continued from previous page...

Atom-1	Atom-2	Interatomic distance (Å)	Clash overlap (Å)
1:B:385:GLU:HG2	1:B:389:HIS:CD2	2.50	0.47
1:B:225:ALA:O	1:B:228:VAL:HG13	2.15	0.46
1:B:370:TYR:HB3	1:B:371:PRO:HD2	1.97	0.46
1:B:120:LEU:HD21	1:B:169:ILE:HD12	1.96	0.46
1:B:132:TYR:HB2	1:B:182:LEU:CD1	2.45	0.46
1:B:25:THR:HG22	1:B:53:THR:HG22	1.96	0.46
1:B:78:ARG:HH12	1:B:132:TYR:HD2	1.63	0.46
1:B:349:ASP:HA	1:B:351:LYS:NZ	2.31	0.46
1:B:255:MET:O	1:B:258:THR:HG22	2.16	0.46
1:B:407:LYS:C	1:B:409:SER:H	2.19	0.46
1:B:130:THR:HA	1:B:133:LYS:HE3	1.96	0.46
1:B:370:TYR:CD2	1:B:432:ARG:HD3	2.50	0.46
1:B:120:LEU:HD22	1:B:124:ARG:HD2	1.98	0.45
1:B:198:GLN:HA	4:B:487:HOH:O	2.15	0.45
1:B:152:ALA:HB2	1:B:187:ILE:HD12	1.98	0.45
1:B:291:ASP:CG	1:B:327:LEU:HB2	2.37	0.45
1:B:347:ILE:CG2	1:B:348:SER:N	2.79	0.45
1:B:4:LEU:HD23	1:B:105:PRO:HA	1.97	0.45
1:B:363:LYS:HD3	4:B:523:HOH:O	2.15	0.45
1:B:44:SER:C	1:B:46:PRO:HD3	2.37	0.45
1:B:76:VAL:HG13	1:B:81:ALA:HB3	1.98	0.45
1:B:370:TYR:CE2	1:B:432:ARG:HD3	2.52	0.45
1:B:117:TRP:CD1	1:B:163:ILE:HG13	2.51	0.45
1:B:385:GLU:HG2	1:B:389:HIS:HD2	1.82	0.45
1:B:25:THR:HA	1:B:52:ILE:O	2.16	0.44
1:B:1:MET:HE2	1:B:2:PRO:O	2.17	0.44
1:B:29:ALA:O	1:B:32:TRP:HB3	2.18	0.44
1:B:176:THR:CG2	1:B:178:HIS:H	2.29	0.44
1:B:126:GLU:OE2	1:B:226:GLY:HA3	2.18	0.44
1:B:385:GLU:HG3	4:B:591:HOH:O	2.17	0.44
1:B:114:ILE:HG13	1:B:115:MET:N	2.31	0.44
1:B:245:THR:HG22	1:B:246:VAL:HG23	2.00	0.44
1:B:345:ILE:HD12	1:B:345:ILE:N	2.33	0.44
1:B:25:THR:CG2	1:B:53:THR:HG22	2.47	0.44
1:B:186:GLU:HG3	1:B:186:GLU:O	2.16	0.43
1:B:345:ILE:CG2	1:B:346:HIS:H	2.30	0.43
1:B:376:ALA:HA	4:B:512:HOH:O	2.17	0.43
1:B:57:VAL:O	1:B:61:PHE:HD1	2.01	0.43
1:B:255:MET:HA	1:B:258:THR:HG22	2.00	0.43
1:B:65:LEU:CD1	1:B:86:PRO:HA	2.48	0.43
1:B:175:PRO:HB2	1:B:247:LEU:HD23	2.00	0.43

Continued on next page...

Continued from previous page...

Atom-1	Atom-2	Interatomic distance (Å)	Clash overlap (Å)
1:B:320:GLN:HE21	1:B:320:GLN:HB2	1.65	0.43
1:B:126:GLU:CD	1:B:226:GLY:HA3	2.39	0.43
1:B:16:LEU:HD12	1:B:25:THR:O	2.17	0.43
1:B:74:ARG:HH21	1:B:156:GLU:HB2	1.83	0.43
1:B:176:THR:CG2	1:B:177:THR:N	2.81	0.43
1:B:95:ARG:CG	1:B:173:ILE:HD12	2.46	0.43
1:B:177:THR:HG22	1:B:247:LEU:HD21	2.00	0.43
1:B:25:THR:HG22	1:B:53:THR:HA	2.00	0.43
1:B:194:LEU:HD13	1:B:194:LEU:N	2.34	0.43
1:B:240:TRP:CE2	1:B:247:LEU:HD13	2.54	0.43
1:B:356:LEU:HD11	1:B:374:PHE:CE2	2.54	0.43
1:B:132:TYR:HB2	1:B:182:LEU:HD13	2.01	0.42
1:B:174:THR:HA	1:B:175:PRO:HD3	1.86	0.42
1:B:151:VAL:HG13	1:B:152:ALA:N	2.34	0.42
1:B:276:ALA:HA	1:B:381:LEU:CD2	2.48	0.42
1:B:279:MET:HE3	1:B:295:PHE:CD2	2.54	0.42
1:B:367:ASP:HB2	4:B:520:HOH:O	2.19	0.42
1:B:416:GLU:OE2	1:B:416:GLU:N	2.52	0.42
1:B:402:ALA:O	1:B:406:VAL:HG23	2.19	0.42
1:B:279:MET:HB3	1:B:279:MET:SD	2.59	0.42
1:B:311:HIS:CE1	1:B:313:LYS:HB2	2.55	0.42
1:B:157:LYS:HD2	1:B:157:LYS:O	2.20	0.41
1:B:419:VAL:O	1:B:423:GLU:HB2	2.20	0.41
1:B:61:PHE:O	1:B:64:LEU:HB2	2.20	0.41
1:B:5:VAL:HB	1:B:7:TRP:HE1	1.86	0.41
1:B:176:THR:HG22	1:B:178:HIS:H	1.85	0.41
1:B:63:ASN:OD1	1:B:263:SER:HB3	2.20	0.41
1:B:194:LEU:N	1:B:194:LEU:CD1	2.83	0.41
1:B:317:VAL:CA	1:B:328:THR:HG23	2.51	0.41
1:B:170:PRO:HB2	1:B:174:THR:O	2.21	0.41
1:B:117:TRP:HB3	1:B:161:LEU:HD23	2.03	0.41
1:B:339:VAL:O	1:B:339:VAL:HG12	2.21	0.41
1:B:74:ARG:O	1:B:77:LYS:HB2	2.21	0.41
1:B:42:SER:HB2	1:B:60:PHE:CE1	2.55	0.41
1:B:158:THR:HG22	1:B:180:ILE:HB	2.02	0.40
1:B:150:SEP:O3P	1:B:266:LYS:NZ	2.53	0.40
1:B:132:TYR:HD1	1:B:182:LEU:HD11	1.86	0.40
1:B:157:LYS:H	1:B:157:LYS:HG3	1.48	0.40
1:B:175:PRO:HG3	1:B:249:ARG:CZ	2.51	0.40
1:B:132:TYR:O	1:B:133:LYS:HB3	2.20	0.40
1:B:251:PRO:HB3	4:B:583:HOH:O	2.22	0.40

Continued on next page...

Continued from previous page...

Atom-1	Atom-2	Interatomic distance (Å)	Clash overlap (Å)
1:B:314:ASN:ND2	4:B:568:HOH:O	2.55	0.40
1:B:42:SER:HB2	1:B:60:PHE:CD1	2.57	0.40
1:B:95:ARG:HD3	1:B:172:GLY:O	2.22	0.40

There are no symmetry-related clashes.

5.3 Torsion angles [i](#)

5.3.1 Protein backbone [i](#)

In the following table, the Percentiles column shows the percent Ramachandran outliers of the chain as a percentile score with respect to all X-ray entries followed by that with respect to entries of similar resolution.

The Analysed column shows the number of residues for which the backbone conformation was analysed, and the total number of residues.

Mol	Chain	Analysed	Favoured	Allowed	Outliers	Percentiles
1	B	412/440 (94%)	382 (93%)	24 (6%)	6 (2%)	10 10

All (6) Ramachandran outliers are listed below:

Mol	Chain	Res	Type
1	B	2	PRO
1	B	115	MET
1	B	80	HIS
1	B	436	GLU
1	B	9	ASN
1	B	384	PRO

5.3.2 Protein sidechains [i](#)

In the following table, the Percentiles column shows the percent sidechain outliers of the chain as a percentile score with respect to all X-ray entries followed by that with respect to entries of similar resolution.

The Analysed column shows the number of residues for which the sidechain conformation was analysed, and the total number of residues.

Mol	Chain	Analysed	Rotameric	Outliers	Percentiles
1	B	356/373 (95%)	328 (92%)	28 (8%)	12 15

All (28) residues with a non-rotameric sidechain are listed below:

Mol	Chain	Res	Type
1	B	11	GLN
1	B	24	HIS
1	B	37	TYR
1	B	84	ARG
1	B	115	MET
1	B	121	THR
1	B	122	GLU
1	B	124	ARG
1	B	140	MET
1	B	146	ASP
1	B	148	ARG
1	B	155	GLN
1	B	157	LYS
1	B	168	CYS
1	B	182	LEU
1	B	194	LEU
1	B	224	LYS
1	B	228	VAL
1	B	283	MET
1	B	309	ASP
1	B	314	ASN
1	B	326	ARG
1	B	327	LEU
1	B	347	ILE
1	B	348	SER
1	B	357	ASN
1	B	360	LYS
1	B	393	SER

Some sidechains can be flipped to improve hydrogen bonding and reduce clashes. All (7) such sidechains are listed below:

Mol	Chain	Res	Type
1	B	10	ASN
1	B	24	HIS
1	B	59	ASN
1	B	85	GLN
1	B	198	GLN

Continued on next page...

Continued from previous page...

Mol	Chain	Res	Type
1	B	346	HIS
1	B	357	ASN

5.3.3 RNA [i](#)

There are no RNA molecules in this entry.

5.4 Non-standard residues in protein, DNA, RNA chains [i](#)

1 non-standard protein/DNA/RNA residue is modelled in this entry.

In the following table, the Counts columns list the number of bonds (or angles) for which Mogul statistics could be retrieved, the number of bonds (or angles) that are observed in the model and the number of bonds (or angles) that are defined in the Chemical Component Dictionary. The Link column lists molecule types, if any, to which the group is linked. The Z score for a bond length (or angle) is the number of standard deviations the observed value is removed from the expected value. A bond length (or angle) with $|Z| > 2$ is considered an outlier worth inspection. RMSZ is the root-mean-square of all Z scores of the bond lengths (or angles).

Mol	Type	Chain	Res	Link	Bond lengths			Bond angles		
					Counts	RMSZ	# Z > 2	Counts	RMSZ	# Z > 2
1	SEP	B	150	1	8,9,10	1.11	0	8,12,14	1.47	1 (12%)

In the following table, the Chirals column lists the number of chiral outliers, the number of chiral centers analysed, the number of these observed in the model and the number defined in the Chemical Component Dictionary. Similar counts are reported in the Torsion and Rings columns. '-' means no outliers of that kind were identified.

Mol	Type	Chain	Res	Link	Chirals	Torsions	Rings
1	SEP	B	150	1	-	1/5/8/10	-

There are no bond length outliers.

All (1) bond angle outliers are listed below:

Mol	Chain	Res	Type	Atoms	Z	Observed(°)	Ideal(°)
1	B	150	SEP	O3P-P-O1P	3.18	123.12	110.68

There are no chirality outliers.

All (1) torsion outliers are listed below:

Mol	Chain	Res	Type	Atoms
1	B	150	SEP	CB-OG-P-O1P

There are no ring outliers.

1 monomer is involved in 1 short contact:

Mol	Chain	Res	Type	Clashes	Symm-Clashes
1	B	150	SEP	1	0

5.5 Carbohydrates [i](#)

There are no carbohydrates in this entry.

5.6 Ligand geometry [i](#)

2 ligands are modelled in this entry.

In the following table, the Counts columns list the number of bonds (or angles) for which Mogul statistics could be retrieved, the number of bonds (or angles) that are observed in the model and the number of bonds (or angles) that are defined in the Chemical Component Dictionary. The Link column lists molecule types, if any, to which the group is linked. The Z score for a bond length (or angle) is the number of standard deviations the observed value is removed from the expected value. A bond length (or angle) with $|Z| > 2$ is considered an outlier worth inspection. RMSZ is the root-mean-square of all Z scores of the bond lengths (or angles).

Mol	Type	Chain	Res	Link	Bond lengths			Bond angles		
					Counts	RMSZ	# Z > 2	Counts	RMSZ	# Z > 2
2	ADE	B	500	-	9,11,11	1.95	2 (22%)	7,15,15	1.41	2 (28%)
3	SO4	B	833	-	4,4,4	0.48	0	6,6,6	0.19	0

In the following table, the Chirals column lists the number of chiral outliers, the number of chiral centers analysed, the number of these observed in the model and the number defined in the Chemical Component Dictionary. Similar counts are reported in the Torsion and Rings columns. '-' means no outliers of that kind were identified.

Mol	Type	Chain	Res	Link	Chirals	Torsions	Rings
2	ADE	B	500	-	-	-	0/2/2/2

All (2) bond length outliers are listed below:

Mol	Chain	Res	Type	Atoms	Z	Observed(Å)	Ideal(Å)
2	B	500	ADE	C2-N3	3.93	1.38	1.32
2	B	500	ADE	C4-N3	3.74	1.42	1.37

All (2) bond angle outliers are listed below:

Mol	Chain	Res	Type	Atoms	Z	Observed(°)	Ideal(°)
2	B	500	ADE	N3-C2-N1	-2.35	125.00	128.68
2	B	500	ADE	C4-C5-N7	2.26	111.75	109.40

There are no chirality outliers.

There are no torsion outliers.

There are no ring outliers.

No monomer is involved in short contacts.

5.7 Other polymers [i](#)

There are no such residues in this entry.

5.8 Polymer linkage issues [i](#)

There are no chain breaks in this entry.

6 Fit of model and data

6.1 Protein, DNA and RNA chains

In the following table, the column labelled ‘#RSRZ> 2’ contains the number (and percentage) of RSRZ outliers, followed by percent RSRZ outliers for the chain as percentile scores relative to all X-ray entries and entries of similar resolution. The OWAB column contains the minimum, median, 95th percentile and maximum values of the occupancy-weighted average B-factor per residue. The column labelled ‘Q< 0.9’ lists the number of (and percentage) of residues with an average occupancy less than 0.9.

Mol	Chain	Analysed	<RSRZ>	#RSRZ>2	OWAB(Å ²)	Q<0.9
1	B	420/440 (95%)	0.58	41 (9%) 7 10	17, 43, 76, 84	1 (0%)

All (41) RSRZ outliers are listed below:

Mol	Chain	Res	Type	RSRZ
1	B	2	PRO	7.3
1	B	37	TYR	6.1
1	B	84	ARG	5.5
1	B	24	HIS	5.4
1	B	87	PHE	5.2
1	B	115	MET	5.1
1	B	410	LEU	4.6
1	B	435	ARG	4.5
1	B	3	LYS	4.3
1	B	113	PRO	4.3
1	B	139	GLY	4.2
1	B	50	GLY	4.1
1	B	18	LYS	4.0
1	B	21	ASN	4.0
1	B	434	SER	3.9
1	B	17	THR	3.9
1	B	404	ASP	3.7
1	B	153	GLY	3.5
1	B	175	PRO	3.4
1	B	76	VAL	3.3
1	B	95	ARG	2.9
1	B	437	TYR	2.9
1	B	19	LEU	2.8
1	B	23	ALA	2.8
1	B	4	LEU	2.8
1	B	77	LYS	2.6
1	B	93	ILE	2.6

Continued on next page...

Continued from previous page...

Mol	Chain	Res	Type	RSRZ
1	B	411	PRO	2.6
1	B	25	THR	2.6
1	B	132	TYR	2.6
1	B	100	ALA	2.5
1	B	408	THR	2.5
1	B	80	HIS	2.4
1	B	412	THR	2.3
1	B	114	ILE	2.3
1	B	22	GLY	2.2
1	B	321	ALA	2.2
1	B	1	MET	2.2
1	B	54	SER	2.2
1	B	20	ALA	2.2
1	B	82	LYS	2.1

6.2 Non-standard residues in protein, DNA, RNA chains [i](#)

In the following table, the Atoms column lists the number of modelled atoms in the group and the number defined in the chemical component dictionary. The B-factors column lists the minimum, median, 95th percentile and maximum values of B factors of atoms in the group. The column labelled 'Q< 0.9' lists the number of atoms with occupancy less than 0.9.

Mol	Type	Chain	Res	Atoms	RSCC	RSR	B-factors(Å ²)	Q<0.9
1	SEP	B	150	10/11	0.93	0.14	31,35,37,38	0

6.3 Carbohydrates [i](#)

There are no carbohydrates in this entry.

6.4 Ligands [i](#)

In the following table, the Atoms column lists the number of modelled atoms in the group and the number defined in the chemical component dictionary. The B-factors column lists the minimum, median, 95th percentile and maximum values of B factors of atoms in the group. The column labelled 'Q< 0.9' lists the number of atoms with occupancy less than 0.9.

Mol	Type	Chain	Res	Atoms	RSCC	RSR	B-factors(Å ²)	Q<0.9
3	SO4	B	833	5/5	0.82	0.16	67,67,69,69	0
2	ADE	B	500	10/10	0.91	0.19	31,36,45,51	0

6.5 Other polymers [i](#)

There are no such residues in this entry.