



# Full wwPDB X-ray Structure Validation Report ⓘ

Sep 5, 2023 – 12:03 PM EDT

PDB ID : 3TM5  
Title : Crystal structure of Trm14 from *Pyrococcus furiosus* in complex with sinefungin  
Authors : Fislage, M.; Roovers, M.; Tuszynska, I.; Bujnicki, J.M.; Droogmans, L.; Versees, W.  
Deposited on : 2011-08-31  
Resolution : 2.27 Å(reported)

This is a Full wwPDB X-ray Structure Validation Report for a publicly released PDB entry.

We welcome your comments at [validation@mail.wwpdb.org](mailto:validation@mail.wwpdb.org)

A user guide is available at

<https://www.wwpdb.org/validation/2017/XrayValidationReportHelp>

with specific help available everywhere you see the ⓘ symbol.

The types of validation reports are described at

<http://www.wwpdb.org/validation/2017/FAQs#types>.

---

The following versions of software and data (see [references ⓘ](#)) were used in the production of this report:

MolProbity : 4.02b-467  
Mogul : 1.8.5 (274361), CSD as541be (2020)  
Xtriage (Phenix) : 1.13  
EDS : 2.35  
buster-report : 1.1.7 (2018)  
Percentile statistics : 20191225.v01 (using entries in the PDB archive December 25th 2019)  
Refmac : 5.8.0158  
CCP4 : 7.0.044 (Gargrove)  
Ideal geometry (proteins) : Engh & Huber (2001)  
Ideal geometry (DNA, RNA) : Parkinson et al. (1996)  
Validation Pipeline (wwPDB-VP) : 2.35

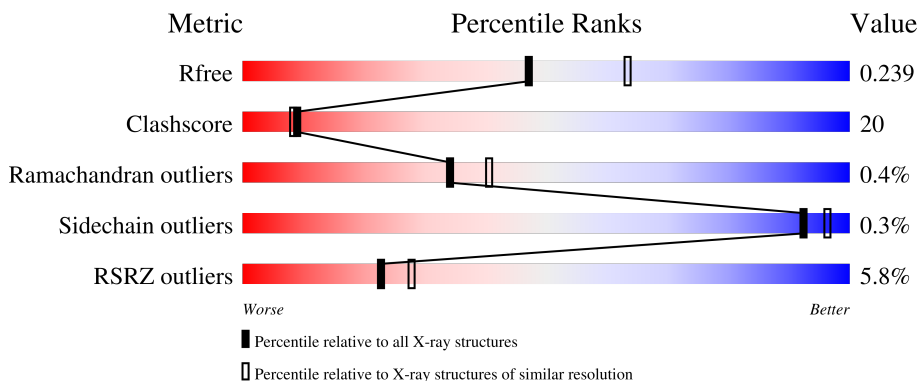
# 1 Overall quality at a glance

The following experimental techniques were used to determine the structure:

*X-RAY DIFFRACTION*


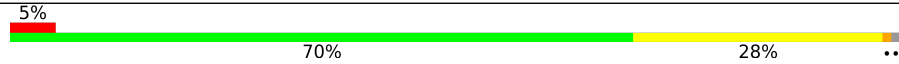
The reported resolution of this entry is 2.27 Å.

Percentile scores (ranging between 0-100) for global validation metrics of the entry are shown in the following graphic. The table shows the number of entries on which the scores are based.



Metric	Whole archive (#Entries)	Similar resolution (#Entries, resolution range(Å))
$R_{free}$	130704	6980 (2.30-2.26)
Clashscore	141614	7711 (2.30-2.26)
Ramachandran outliers	138981	7597 (2.30-2.26)
Sidechain outliers	138945	7598 (2.30-2.26)
RSRZ outliers	127900	6849 (2.30-2.26)

The table below summarises the geometric issues observed across the polymeric chains and their fit to the electron density. The red, orange, yellow and green segments of the lower bar indicate the fraction of residues that contain outliers for  $\geq 3$ , 2, 1 and 0 types of geometric quality criteria respectively. A grey segment represents the fraction of residues that are not modelled. The numeric value for each fraction is indicated below the corresponding segment, with a dot representing fractions  $\leq 5\%$ . The upper red bar (where present) indicates the fraction of residues that have poor fit to the electron density. The numeric value is given above the bar.

Mol	Chain	Length	Quality of chain
1	A	373	 6% 64% 33% ..
1	B	373	 5% 70% 28% ..

## 2 Entry composition i

There are 3 unique types of molecules in this entry. The entry contains 6163 atoms, of which 0 are hydrogens and 0 are deuteriums.

In the tables below, the ZeroOcc column contains the number of atoms modelled with zero occupancy, the AltConf column contains the number of residues with at least one atom in alternate conformation and the Trace column contains the number of residues modelled with at most 2 atoms.

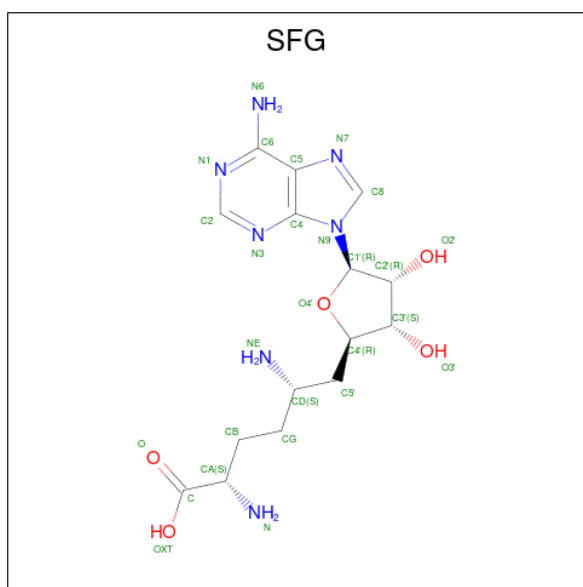
- Molecule 1 is a protein called Crystal structure of Trm14.

Mol	Chain	Residues	Atoms					ZeroOcc	AltConf	Trace
			Total	C	N	O	S			
1	A	368	2921	1876	500	537	8	2	1	0
1	B	368	2935	1888	502	536	9	0	3	0

There are 16 discrepancies between the modelled and reference sequences:

Chain	Residue	Modelled	Actual	Comment	Reference
A	366	LEU	-	expression tag	UNP Q8U248
A	367	GLU	-	expression tag	UNP Q8U248
A	368	HIS	-	expression tag	UNP Q8U248
A	369	HIS	-	expression tag	UNP Q8U248
A	370	HIS	-	expression tag	UNP Q8U248
A	371	HIS	-	expression tag	UNP Q8U248
A	372	HIS	-	expression tag	UNP Q8U248
A	373	HIS	-	expression tag	UNP Q8U248
B	366	LEU	-	expression tag	UNP Q8U248
B	367	GLU	-	expression tag	UNP Q8U248
B	368	HIS	-	expression tag	UNP Q8U248
B	369	HIS	-	expression tag	UNP Q8U248
B	370	HIS	-	expression tag	UNP Q8U248
B	371	HIS	-	expression tag	UNP Q8U248
B	372	HIS	-	expression tag	UNP Q8U248
B	373	HIS	-	expression tag	UNP Q8U248

- Molecule 2 is SINEFUNGIN (three-letter code: SFG) (formula: C<sub>15</sub>H<sub>23</sub>N<sub>7</sub>O<sub>5</sub>).



Mol	Chain	Residues	Atoms			ZeroOcc	AltConf	
2	A	1	Total	C	N	O	0	0
			27	15	7	5		
2	B	1	Total	C	N	O	0	0
			27	15	7	5		

- Molecule 3 is water.

Mol	Chain	Residues	Atoms		ZeroOcc	AltConf
3	A	131	Total	O	0	0
			131	131		
3	B	122	Total	O	0	0
			122	122		



## 4 Data and refinement statistics i

Property	Value	Source
Space group	P 1 21 1	Depositor
Cell constants a, b, c, $\alpha$ , $\beta$ , $\gamma$	82.25Å 45.06Å 121.08Å 90.00° 91.81° 90.00°	Depositor
Resolution (Å)	48.02 – 2.27 49.48 – 2.21	Depositor EDS
% Data completeness (in resolution range)	91.0 (48.02-2.27) 92.7 (49.48-2.21)	Depositor EDS
$R_{merge}$	0.15	Depositor
$R_{sym}$	(Not available)	Depositor
$\langle I/\sigma(I) \rangle$ <sup>1</sup>	1.09 (at 2.20Å)	Xtriage
Refinement program	REFMAC 5.5.0109	Depositor
R, $R_{free}$	0.204 , 0.219 0.218 , 0.239	Depositor DCC
$R_{free}$ test set	2089 reflections (4.94%)	wwPDB-VP
Wilson B-factor (Å <sup>2</sup> )	25.1	Xtriage
Anisotropy	0.130	Xtriage
Bulk solvent $k_{sol}$ (e/Å <sup>3</sup> ), $B_{sol}$ (Å <sup>2</sup> )	0.37 , 50.8	EDS
L-test for twinning <sup>2</sup>	$\langle  L  \rangle = 0.50$ , $\langle L^2 \rangle = 0.35$	Xtriage
Estimated twinning fraction	0.086 for h,-k,-l	Xtriage
Reported twinning fraction	0.834 for H, K, L 0.166 for -h,-k,l	Depositor
Outliers	0 of 42271 reflections	Xtriage
$F_o, F_c$ correlation	0.91	EDS
Total number of atoms	6163	wwPDB-VP
Average B, all atoms (Å <sup>2</sup> )	24.0	wwPDB-VP

Xtriage's analysis on translational NCS is as follows: *The largest off-origin peak in the Patterson function is 5.64% of the height of the origin peak. No significant pseudotranslation is detected.*

<sup>1</sup>Intensities estimated from amplitudes.

<sup>2</sup>Theoretical values of  $\langle |L| \rangle$ ,  $\langle L^2 \rangle$  for acentric reflections are 0.5, 0.333 respectively for untwinned datasets, and 0.375, 0.2 for perfectly twinned datasets.

## 5 Model quality [i](#)

### 5.1 Standard geometry [i](#)

Bond lengths and bond angles in the following residue types are not validated in this section: SFG

The Z score for a bond length (or angle) is the number of standard deviations the observed value is removed from the expected value. A bond length (or angle) with  $|Z| > 5$  is considered an outlier worth inspection. RMSZ is the root-mean-square of all Z scores of the bond lengths (or angles).

Mol	Chain	Bond lengths		Bond angles	
		RMSZ	# $ Z  > 5$	RMSZ	# $ Z  > 5$
1	A	0.68	1/2974 (0.0%)	0.76	1/3999 (0.0%)
1	B	0.70	0/2994	0.79	3/4025 (0.1%)
All	All	0.69	1/5968 (0.0%)	0.78	4/8024 (0.0%)

Chiral center outliers are detected by calculating the chiral volume of a chiral center and verifying if the center is modelled as a planar moiety or with the opposite hand. A planarity outlier is detected by checking planarity of atoms in a peptide group, atoms in a mainchain group or atoms of a sidechain that are expected to be planar.

Mol	Chain	#Chirality outliers	#Planarity outliers
1	A	0	1

All (1) bond length outliers are listed below:

Mol	Chain	Res	Type	Atoms	Z	Observed(Å)	Ideal(Å)
1	A	226	CYS	CB-SG	-5.12	1.73	1.81

All (4) bond angle outliers are listed below:

Mol	Chain	Res	Type	Atoms	Z	Observed(°)	Ideal(°)
1	B	226	CYS	N-CA-CB	-5.87	100.04	110.60
1	B	302	LYS	N-CA-C	-5.22	96.89	111.00
1	A	301	GLY	N-CA-C	-5.12	100.30	113.10
1	B	286	SER	CB-CA-C	5.01	119.61	110.10

There are no chirality outliers.

All (1) planarity outliers are listed below:

Mol	Chain	Res	Type	Group
1	A	354	HIS	Peptide

## 5.2 Too-close contacts [i](#)

In the following table, the Non-H and H(model) columns list the number of non-hydrogen atoms and hydrogen atoms in the chain respectively. The H(added) column lists the number of hydrogen atoms added and optimized by MolProbity. The Clashes column lists the number of clashes within the asymmetric unit, whereas Symm-Clashes lists symmetry-related clashes.

Mol	Chain	Non-H	H(model)	H(added)	Clashes	Symm-Clashes
1	A	2921	0	3004	135	0
1	B	2935	0	3039	111	0
2	A	27	0	22	2	0
2	B	27	0	22	2	0
3	A	131	0	0	6	0
3	B	122	0	0	12	0
All	All	6163	0	6087	242	0

The all-atom clashscore is defined as the number of clashes found per 1000 atoms (including hydrogen atoms). The all-atom clashscore for this structure is 20.

All (242) close contacts within the same asymmetric unit are listed below, sorted by their clash magnitude.

Atom-1	Atom-2	Interatomic distance (Å)	Clash overlap (Å)
1:A:225:MET:CE	1:A:295:PRO:HD3	1.52	1.40
1:A:225:MET:HE1	1:A:295:PRO:CD	1.55	1.35
1:A:90:ILE:HG22	1:A:174:ASP:OD1	1.39	1.19
1:B:4:LEU:HD21	1:B:42:ARG:NH2	1.57	1.16
1:B:52:TYR:OH	1:B:60:ARG:HD2	1.46	1.15
1:B:177:PHE:HB3	3:B:605:HOH:O	1.41	1.14
1:A:120:THR:HG21	1:A:159:ASN:HB3	1.35	1.06
1:A:120:THR:HG21	1:A:159:ASN:CB	1.85	1.05
1:B:332:LYS:O	1:B:336:GLU:HG2	1.54	1.05
1:B:247:ILE:HD12	1:B:273:ILE:HB	1.41	1.03
1:A:302:LYS:HD3	3:B:502:HOH:O	1.60	1.02
1:A:120:THR:CG2	1:A:159:ASN:HB3	1.91	1.01
1:B:4:LEU:HD21	1:B:42:ARG:HH21	1.08	1.00
1:A:300:ILE:CG1	1:A:301:GLY:H	1.76	0.98
1:B:328:ILE:HG23	1:B:359:VAL:CG1	1.97	0.95
1:B:32:ILE:HD11	1:B:45:LEU:HD13	1.49	0.95
1:B:302:LYS:O	1:B:303:LYS:HB2	1.65	0.94

*Continued on next page...*



*Continued from previous page...*

Atom-1	Atom-2	Interatomic distance (Å)	Clash overlap (Å)
1:A:91:GLU:HB2	1:A:130:ASP:O	1.67	0.93
1:B:328:ILE:CG2	1:B:359:VAL:HG11	1.98	0.93
1:A:339:ILE:HD11	1:A:364:VAL:HG11	1.47	0.93
1:A:339:ILE:CD1	1:A:364:VAL:HG11	2.02	0.90
1:A:228:SER:HB3	2:A:401:SFG:OXT	1.72	0.89
1:A:225:MET:HE1	1:A:295:PRO:HD3	0.90	0.89
1:B:94:GLU:HG2	1:B:95:SER:N	1.86	0.88
1:B:52:TYR:OH	1:B:60:ARG:CD	2.22	0.86
1:B:306:ILE:HG21	1:B:331:GLU:HG3	1.57	0.86
1:A:133:ILE:HD11	1:A:138:ILE:HD11	1.57	0.85
1:B:298:LEU:HD11	1:B:357:LEU:HD21	1.59	0.85
1:A:225:MET:HE2	1:A:295:PRO:HD3	1.60	0.82
1:B:66:THR:O	1:B:70:GLU:HG2	1.78	0.82
1:A:120:THR:CG2	1:A:159:ASN:CB	2.55	0.80
1:B:94:GLU:HG2	1:B:95:SER:H	1.44	0.79
1:A:217:ASP:OD2	1:A:323:LYS:NZ	2.14	0.79
1:B:109:LEU:CD1	1:B:178:LEU:HD23	2.14	0.78
1:B:127:ARG:HH11	1:B:131:HIS:HD2	1.31	0.77
1:B:332:LYS:O	1:B:336:GLU:CG	2.32	0.77
1:A:298:LEU:O	1:A:299:LYS:HB2	1.83	0.77
1:A:90:ILE:CG2	1:A:174:ASP:OD1	2.27	0.77
1:A:136:ILE:O	1:A:140:ARG:HG3	1.84	0.76
1:A:225:MET:HE1	1:A:295:PRO:CG	2.14	0.76
1:A:236:ALA:HB1	1:A:269:LYS:HE3	1.68	0.75
1:A:300:ILE:HG12	1:A:301:GLY:H	1.48	0.75
1:A:333:LYS:NZ	1:A:337:GLU:OE2	2.19	0.75
1:A:300:ILE:CG1	1:A:301:GLY:N	2.49	0.75
1:A:198:HIS:HB2	1:A:228:SER:HB2	1.68	0.75
1:A:308:ASP:O	1:A:312:LYS:HD2	1.87	0.74
1:A:301:GLY:HA2	1:A:302:LYS:C	2.06	0.74
1:B:246:GLY:C	1:B:247:ILE:HD13	2.06	0.74
1:B:247:ILE:CD1	1:B:273:ILE:HB	2.18	0.73
1:A:311:MET:HE1	1:A:341:GLU:HB2	1.69	0.72
1:A:120:THR:HG21	1:A:159:ASN:HB2	1.69	0.72
1:A:133:ILE:CD1	1:A:138:ILE:HD11	2.18	0.72
1:B:226:CYS:HB3	1:B:248:GLU:HB2	1.70	0.71
1:B:328:ILE:HG23	1:B:359:VAL:HG12	1.69	0.71
1:B:109:LEU:HD12	1:B:178:LEU:HD23	1.72	0.71
1:A:328:ILE:HG23	1:A:359:VAL:HG11	1.72	0.71
1:A:147:PHE:CE1	1:A:156:PRO:HB2	2.26	0.70
1:B:226:CYS:HB2	1:B:247:ILE:O	1.91	0.70

*Continued on next page...*

*Continued from previous page...*

Atom-1	Atom-2	Interatomic distance (Å)	Clash overlap (Å)
1:B:177:PHE:HE1	3:B:511:HOH:O	1.73	0.69
1:B:297:GLY:O	1:B:303:LYS:HG3	1.92	0.69
1:B:32:ILE:CD1	1:B:45:LEU:HD13	2.21	0.69
1:B:4:LEU:CD2	1:B:42:ARG:NH2	2.48	0.69
1:A:280:LEU:HB3	1:A:316:GLU:HB3	1.73	0.68
1:B:328:ILE:HG23	1:B:359:VAL:HG11	1.60	0.68
1:A:300:ILE:HG13	1:A:301:GLY:H	1.57	0.67
1:B:246:GLY:O	1:B:247:ILE:HD13	1.95	0.67
1:B:168:ARG:HD3	3:B:536:HOH:O	1.94	0.67
1:B:328:ILE:CG2	1:B:359:VAL:CG1	2.65	0.67
1:A:210:MET:SD	1:A:328:ILE:HD12	2.35	0.67
1:B:29:SER:HB2	1:B:48:GLU:HG3	1.78	0.66
1:A:54:ASP:OD2	1:A:60:ARG:HD2	1.95	0.66
1:B:136:ILE:O	1:B:140:ARG:HG3	1.96	0.66
1:B:177:PHE:CB	3:B:605:HOH:O	2.17	0.66
1:B:115:VAL:HG23	1:B:165:VAL:HG21	1.78	0.65
1:A:124:ARG:NH2	1:A:160:LEU:O	2.27	0.65
1:B:91:GLU:HG2	1:B:130:ASP:O	1.95	0.65
1:B:4:LEU:HD11	1:B:42:ARG:HD3	1.79	0.65
1:B:247:ILE:HD13	1:B:247:ILE:N	2.10	0.65
1:A:302:LYS:HG2	1:B:250:TYR:HD1	1.62	0.65
1:A:335:ILE:HG21	1:A:362:TYR:CE2	2.31	0.64
1:A:301:GLY:HA2	1:A:302:LYS:HB3	1.79	0.64
1:B:278:THR:O	1:B:316:GLU:HG3	1.98	0.63
1:A:193:TRP:CB	1:A:264:ALA:HB2	2.29	0.63
1:B:35:LYS:HB3	1:B:39:ILE:O	1.99	0.62
1:A:198:HIS:HB3	1:A:201:HIS:HB3	1.81	0.62
1:A:254:LEU:HD11	1:A:272:PHE:HB3	1.82	0.62
1:B:52:TYR:CZ	1:B:60:ARG:HD2	2.34	0.62
1:B:125:SER:HA	1:B:169:ALA:O	1.99	0.62
1:B:188:LEU:O	1:B:191:ARG:NH1	2.34	0.61
1:B:77:ARG:NH2	3:B:573:HOH:O	2.32	0.60
1:A:116:LYS:O	1:A:117:VAL:C	2.40	0.60
1:A:306:ILE:HB	1:A:307:PRO:HD3	1.83	0.60
1:B:280:LEU:HB3	1:B:316:GLU:HB3	1.84	0.59
1:B:302:LYS:O	1:B:303:LYS:CB	2.45	0.59
1:A:300:ILE:CG2	1:B:252:LYS:HE3	2.32	0.59
1:A:133:ILE:CD1	1:A:138:ILE:CD1	2.81	0.58
1:B:147:PHE:CE1	1:B:156:PRO:HG2	2.40	0.57
1:B:249:LYS:HE3	1:B:250:TYR:CZ	2.40	0.56
1:A:299:LYS:HE3	1:B:252:LYS:NZ	2.20	0.56

*Continued on next page...*

*Continued from previous page...*

Atom-1	Atom-2	Interatomic distance (Å)	Clash overlap (Å)
1:A:301:GLY:CA	1:A:302:LYS:HB3	2.35	0.56
1:A:133:ILE:HD11	1:A:138:ILE:CD1	2.34	0.56
1:A:28:ILE:HD11	1:A:50:ALA:HA	1.89	0.55
1:A:98:ALA:O	1:A:102:ILE:HG12	2.07	0.55
1:A:228:SER:O	1:A:257:ALA:HA	2.07	0.54
1:B:126:PHE:O	1:B:170:GLU:HA	2.07	0.54
1:A:277:ALA:O	1:A:280:LEU:HB2	2.08	0.54
1:B:177:PHE:CE1	3:B:511:HOH:O	2.53	0.54
1:A:120:THR:HA	1:A:157:LEU:O	2.07	0.53
1:A:160:LEU:HD22	1:A:160:LEU:H	1.73	0.53
1:A:300:ILE:HG13	1:A:301:GLY:N	2.17	0.53
1:A:361:LEU:C	1:A:361:LEU:HD23	2.29	0.53
1:A:193:TRP:HB2	1:A:264:ALA:HB2	1.90	0.53
1:B:42:ARG:CZ	1:B:177:PHE:CE1	2.92	0.53
1:A:339:ILE:HD12	1:A:364:VAL:HG11	1.86	0.53
1:B:11[A]:ILE:HD11	1:B:352:ILE:HD13	1.91	0.53
1:B:117:VAL:O	1:B:118:SER:OG	2.23	0.52
1:A:114:PHE:C	1:A:115:VAL:HG13	2.30	0.52
1:A:99:LEU:HD21	1:A:137:ASP:HB3	1.91	0.52
1:B:109:LEU:HD12	1:B:178:LEU:CD2	2.38	0.52
1:A:114:PHE:C	1:A:115:VAL:CG1	2.78	0.52
1:A:120:THR:HG22	1:A:159:ASN:HB3	1.88	0.52
1:A:301:GLY:CA	1:A:302:LYS:C	2.77	0.52
1:A:94:GLU:HA	1:A:132:ASN:HD22	1.75	0.51
1:B:120:THR:HA	1:B:157:LEU:O	2.10	0.51
1:A:115:VAL:HG11	1:A:167:PHE:CZ	2.45	0.51
1:B:42:ARG:NH1	1:B:170:GLU:OE1	2.43	0.51
1:A:99:LEU:HD22	1:A:141:THR:OG1	2.11	0.51
1:A:343:GLY:HA2	3:A:620:HOH:O	2.11	0.51
1:A:296:TYR:HB3	1:A:330:THR:OG1	2.12	0.50
1:B:4:LEU:CD2	1:B:42:ARG:HH21	2.00	0.50
1:A:54:ASP:HB3	1:A:60:ARG:HD3	1.94	0.50
1:A:293:ASN:HD22	1:A:328:ILE:HG22	1.76	0.50
1:B:198:HIS:HB2	1:B:228:SER:HB3	1.94	0.50
1:A:120:THR:HG22	1:A:121:PHE:N	2.28	0.49
1:B:293:ASN:HB3	2:B:401:SFG:HN2	1.76	0.49
1:B:247:ILE:HD11	1:B:273:ILE:HD12	1.95	0.49
1:A:66:THR:O	1:A:70:GLU:HG2	2.12	0.49
1:B:178:LEU:N	3:B:605:HOH:O	2.45	0.49
1:B:126:PHE:HE2	1:B:172:ILE:HD11	1.76	0.49
2:B:401:SFG:NE	3:B:606:HOH:O	2.35	0.49

*Continued on next page...*

*Continued from previous page...*

Atom-1	Atom-2	Interatomic distance (Å)	Clash overlap (Å)
1:A:297:GLY:HA3	1:A:306:ILE:HD11	1.95	0.49
1:B:202:LEU:HD22	1:B:293:ASN:HB2	1.95	0.49
1:A:133:ILE:HD12	1:A:138:ILE:CD1	2.43	0.48
1:B:271:LYS:HE2	1:B:273:ILE:HD11	1.96	0.48
1:B:249:LYS:HE3	1:B:250:TYR:OH	2.13	0.48
1:A:55:GLU:OE1	1:A:55:GLU:N	2.32	0.48
1:A:161:ASP:O	1:A:162:HIS:HD2	1.97	0.48
1:A:224:PRO:O	1:A:247:ILE:O	2.32	0.48
1:B:109:LEU:HD13	1:B:178:LEU:HD23	1.96	0.48
1:A:120:THR:CG2	1:A:159:ASN:HB2	2.36	0.48
1:A:86:LYS:HD2	1:A:175:VAL:HG22	1.95	0.47
1:B:4:LEU:HD21	1:B:42:ARG:HH22	1.65	0.47
1:A:226:CYS:SG	1:A:248:GLU:HB2	2.54	0.47
1:A:311:MET:HE1	1:A:341:GLU:CB	2.41	0.47
1:A:255:ILE:CD1	3:A:502:HOH:O	2.62	0.47
1:B:224:PRO:HD2	1:B:292:SER:HB2	1.97	0.47
1:B:226:CYS:CB	1:B:247:ILE:O	2.62	0.47
1:A:91:GLU:HB3	1:A:131:HIS:CD2	2.49	0.47
1:A:124:ARG:O	1:A:168:ARG:HA	2.14	0.47
1:B:117:VAL:O	1:B:118:SER:CB	2.61	0.47
1:A:116:LYS:O	1:A:118:SER:N	2.48	0.47
1:A:161:ASP:C	1:A:162:HIS:HD2	2.19	0.46
1:B:111:VAL:HG22	1:B:167:PHE:CZ	2.49	0.46
1:A:111:VAL:HG12	1:A:150:LEU:HD11	1.98	0.46
1:B:65:SER:HB3	3:B:515:HOH:O	2.14	0.46
1:A:136:ILE:HG22	1:A:140:ARG:NE	2.31	0.46
1:B:94:GLU:CG	1:B:95:SER:H	2.22	0.46
1:A:87:PHE:N	1:A:87:PHE:CD1	2.84	0.46
1:B:11[A]:ILE:HD11	1:B:352:ILE:CD1	2.46	0.46
1:B:168:ARG:CD	3:B:536:HOH:O	2.60	0.46
1:B:120:THR:HG22	1:B:157:LEU:HB3	1.98	0.45
1:A:299:LYS:HE3	1:B:252:LYS:HZ3	1.79	0.45
1:A:339:ILE:HG23	1:A:344:PHE:HB2	1.99	0.45
1:A:133:ILE:HD12	1:A:138:ILE:HD13	1.97	0.45
1:B:115:VAL:CG2	1:B:165:VAL:HG21	2.43	0.45
1:A:141:THR:HA	1:A:144:GLU:OE1	2.16	0.45
1:B:339:ILE:HG23	1:B:344:PHE:HB2	1.99	0.45
1:A:72:SER:OG	1:A:75:LEU:HG	2.16	0.45
1:A:299:LYS:HD2	1:A:299:LYS:HA	1.51	0.45
1:B:333:LYS:O	1:B:337:GLU:HG3	2.17	0.45
1:A:119:GLU:HB2	3:A:589:HOH:O	2.16	0.45

*Continued on next page...*

*Continued from previous page...*

Atom-1	Atom-2	Interatomic distance (Å)	Clash overlap (Å)
1:A:128:LYS:O	1:A:131:HIS:HE1	2.00	0.45
1:A:146:ILE:O	1:A:150:LEU:HD13	2.17	0.45
1:A:302:LYS:HE2	1:B:251:ARG:HB2	1.98	0.44
1:A:328:ILE:HG23	1:A:359:VAL:CG1	2.44	0.44
1:B:217:ASP:OD2	1:B:323:LYS:NZ	2.42	0.44
1:A:225:MET:HE3	2:A:401:SFG:O4'	2.17	0.44
1:B:116:LYS:O	1:B:119:GLU:HB2	2.18	0.44
1:A:87:PHE:N	1:A:87:PHE:HD1	2.15	0.44
1:A:214:ALA:HB2	1:A:326:VAL:HG21	1.99	0.44
1:A:232:LEU:HD11	1:A:246:GLY:CA	2.48	0.44
1:B:111:VAL:CG2	1:B:167:PHE:CE1	3.01	0.44
1:A:108[B]:SER:OG	3:A:588:HOH:O	2.21	0.44
1:B:120:THR:HB	1:B:159:ASN:HB2	1.99	0.44
1:A:116:LYS:C	1:A:118:SER:N	2.71	0.43
1:A:356:GLY:HA2	3:A:621:HOH:O	2.18	0.43
1:B:81:GLU:HG2	1:B:82:ILE:N	2.33	0.43
1:A:301:GLY:HA2	1:A:302:LYS:CB	2.40	0.43
1:A:306:ILE:N	1:A:307:PRO:CD	2.80	0.43
1:B:149:ARG:O	1:B:152[B]:ARG:HG3	2.18	0.43
1:B:198:HIS:HB3	1:B:201:HIS:HB3	2.01	0.43
1:B:124:ARG:NH2	1:B:185:ASP:OD1	2.51	0.43
1:B:193:TRP:CB	1:B:264:ALA:HB2	2.48	0.43
1:A:301:GLY:O	1:A:304:SER:HA	2.18	0.43
1:A:68:LEU:O	1:A:69:ASN:C	2.57	0.42
1:B:26:LEU:HD13	1:B:67:TYR:CZ	2.54	0.42
1:A:339:ILE:HD12	1:A:364:VAL:CG1	2.48	0.42
1:A:141:THR:HG23	3:A:523:HOH:O	2.19	0.42
1:B:3:PHE:HB2	1:B:45:LEU:HB3	2.00	0.42
1:A:126:PHE:O	1:A:170:GLU:HA	2.20	0.42
1:B:121:PHE:CD1	1:B:121:PHE:C	2.92	0.42
1:A:339:ILE:CD1	1:A:364:VAL:CG1	2.88	0.42
1:B:56:LYS:HE3	3:B:571:HOH:O	2.19	0.42
1:B:299:LYS:HE3	1:B:299:LYS:HB2	1.89	0.42
1:A:109:LEU:CD1	1:A:178:LEU:HD23	2.50	0.42
1:A:222:LEU:O	1:A:290:ALA:HA	2.20	0.41
1:B:123:VAL:HG22	1:B:167:PHE:HB2	2.02	0.41
1:B:251:ARG:HE	1:B:255:ILE:HD11	1.85	0.41
1:A:154:GLY:O	1:A:156:PRO:HD3	2.21	0.41
1:A:335:ILE:HD13	1:A:362:TYR:CD2	2.55	0.41
1:A:251:ARG:O	1:A:255:ILE:HG12	2.19	0.41
1:A:311:MET:CE	1:A:342:ASN:HD21	2.33	0.41

*Continued on next page...*

Continued from previous page...

Atom-1	Atom-2	Interatomic distance (Å)	Clash overlap (Å)
1:A:147:PHE:CD1	1:A:156:PRO:HB2	2.56	0.41
1:A:202:LEU:O	1:A:230:THR:HG21	2.20	0.41
1:A:86:LYS:HB3	1:A:86:LYS:HE3	1.88	0.41
1:A:249:LYS:HD3	1:A:250:TYR:CZ	2.56	0.41
1:A:293:ASN:HD22	1:A:328:ILE:CG2	2.34	0.41
1:A:328:ILE:HA	1:A:360:HIS:O	2.21	0.41
1:B:68:LEU:HA	1:B:68:LEU:HD12	1.86	0.41
1:B:127:ARG:HH11	1:B:131:HIS:CD2	2.23	0.41
1:B:87:PHE:HZ	1:B:105:PHE:CG	2.39	0.41
1:B:350:ARG:HD2	1:B:352:ILE:HD11	2.02	0.41
1:A:54:ASP:HB3	1:A:60:ARG:CD	2.51	0.40
1:B:32:ILE:CD1	1:B:45:LEU:CD1	2.96	0.40
1:A:103:LYS:HG3	1:A:145:ALA:HB2	2.03	0.40
1:A:109:LEU:HD12	1:A:178:LEU:HD23	2.03	0.40
1:A:247:ILE:HG12	1:A:273:ILE:HB	2.04	0.40
1:A:227:GLY:O	1:A:257:ALA:HB2	2.21	0.40
1:B:4:LEU:HD23	1:B:79:ILE:HD12	2.02	0.40
1:B:167:PHE:CE1	1:B:180:ILE:HD11	2.56	0.40

There are no symmetry-related clashes.

## 5.3 Torsion angles [i](#)

### 5.3.1 Protein backbone [i](#)

In the following table, the Percentiles column shows the percent Ramachandran outliers of the chain as a percentile score with respect to all X-ray entries followed by that with respect to entries of similar resolution.

The Analysed column shows the number of residues for which the backbone conformation was analysed, and the total number of residues.

Mol	Chain	Analysed	Favoured	Allowed	Outliers	Percentiles	
1	A	365/373 (98%)	352 (96%)	10 (3%)	3 (1%)	19	22
1	B	369/373 (99%)	358 (97%)	11 (3%)	0	100	100
All	All	734/746 (98%)	710 (97%)	21 (3%)	3 (0%)	34	40

All (3) Ramachandran outliers are listed below:

Mol	Chain	Res	Type
1	A	299	LYS
1	A	300	ILE
1	A	355	GLY

### 5.3.2 Protein sidechains [i](#)

In the following table, the Percentiles column shows the percent sidechain outliers of the chain as a percentile score with respect to all X-ray entries followed by that with respect to entries of similar resolution.

The Analysed column shows the number of residues for which the sidechain conformation was analysed, and the total number of residues.

Mol	Chain	Analysed	Rotameric	Outliers	Percentiles	
1	A	315/319 (99%)	314 (100%)	1 (0%)	92	96
1	B	317/319 (99%)	316 (100%)	1 (0%)	92	96
All	All	632/638 (99%)	630 (100%)	2 (0%)	92	96

All (2) residues with a non-rotameric sidechain are listed below:

Mol	Chain	Res	Type
1	A	333	LYS
1	B	94	GLU

Sometimes sidechains can be flipped to improve hydrogen bonding and reduce clashes. All (10) such sidechains are listed below:

Mol	Chain	Res	Type
1	A	9	GLN
1	A	132	ASN
1	A	162	HIS
1	A	253	HIS
1	A	293	ASN
1	A	342	ASN
1	A	354	HIS
1	B	69	ASN
1	B	131	HIS
1	B	354	HIS

### 5.3.3 RNA [i](#)

There are no RNA molecules in this entry.

## 5.4 Non-standard residues in protein, DNA, RNA chains [i](#)

There are no non-standard protein/DNA/RNA residues in this entry.

## 5.5 Carbohydrates [i](#)

There are no monosaccharides in this entry.

## 5.6 Ligand geometry [i](#)

2 ligands are modelled in this entry.

In the following table, the Counts columns list the number of bonds (or angles) for which Mogul statistics could be retrieved, the number of bonds (or angles) that are observed in the model and the number of bonds (or angles) that are defined in the Chemical Component Dictionary. The Link column lists molecule types, if any, to which the group is linked. The Z score for a bond length (or angle) is the number of standard deviations the observed value is removed from the expected value. A bond length (or angle) with  $|Z| > 2$  is considered an outlier worth inspection. RMSZ is the root-mean-square of all Z scores of the bond lengths (or angles).

Mol	Type	Chain	Res	Link	Bond lengths			Bond angles		
					Counts	RMSZ	# Z  > 2	Counts	RMSZ	# Z  > 2
2	SFG	B	401	-	25,29,29	1.07	2 (8%)	23,42,42	1.90	8 (34%)
2	SFG	A	401	-	25,29,29	0.99	1 (4%)	23,42,42	1.44	4 (17%)

In the following table, the Chirals column lists the number of chiral outliers, the number of chiral centers analysed, the number of these observed in the model and the number defined in the Chemical Component Dictionary. Similar counts are reported in the Torsion and Rings columns. '-' means no outliers of that kind were identified.

Mol	Type	Chain	Res	Link	Chirals	Torsions	Rings
2	SFG	B	401	-	-	9/13/33/33	0/3/3/3
2	SFG	A	401	-	-	2/13/33/33	0/3/3/3

All (3) bond length outliers are listed below:

Mol	Chain	Res	Type	Atoms	Z	Observed(Å)	Ideal(Å)
2	A	401	SFG	C5-C4	2.54	1.47	1.40
2	B	401	SFG	C5-C4	2.45	1.47	1.40
2	B	401	SFG	OXT-C	-2.16	1.23	1.30

All (12) bond angle outliers are listed below:



Mol	Chain	Res	Type	Atoms	Z	Observed(°)	Ideal(°)
2	B	401	SFG	OXT-C-O	-4.39	114.12	124.09
2	A	401	SFG	O4'-C1'-C2'	-3.15	102.32	106.93
2	B	401	SFG	N3-C2-N1	-3.14	123.76	128.68
2	B	401	SFG	O4'-C1'-C2'	-3.10	102.39	106.93
2	B	401	SFG	C4-C5-N7	-2.92	106.35	109.40
2	B	401	SFG	OXT-C-CA	2.80	122.91	113.38
2	A	401	SFG	N3-C2-N1	-2.66	124.51	128.68
2	A	401	SFG	C4-C5-N7	-2.53	106.76	109.40
2	A	401	SFG	OXT-C-O	-2.34	118.79	124.09
2	B	401	SFG	CG-CD-C5'	2.27	117.77	111.03
2	B	401	SFG	O4'-C4'-C5'	2.22	113.17	109.35
2	B	401	SFG	CG-CD-NE	-2.02	103.16	109.03

There are no chirality outliers.

All (11) torsion outliers are listed below:

Mol	Chain	Res	Type	Atoms
2	B	401	SFG	N-CA-CB-CG
2	B	401	SFG	C-CA-CB-CG
2	B	401	SFG	C5'-CD-CG-CB
2	B	401	SFG	NE-CD-CG-CB
2	B	401	SFG	OXT-C-CA-CB
2	B	401	SFG	O-C-CA-CB
2	A	401	SFG	C4'-C5'-CD-CG
2	B	401	SFG	O-C-CA-N
2	A	401	SFG	C4'-C5'-CD-NE
2	B	401	SFG	C4'-C5'-CD-NE
2	B	401	SFG	C4'-C5'-CD-CG

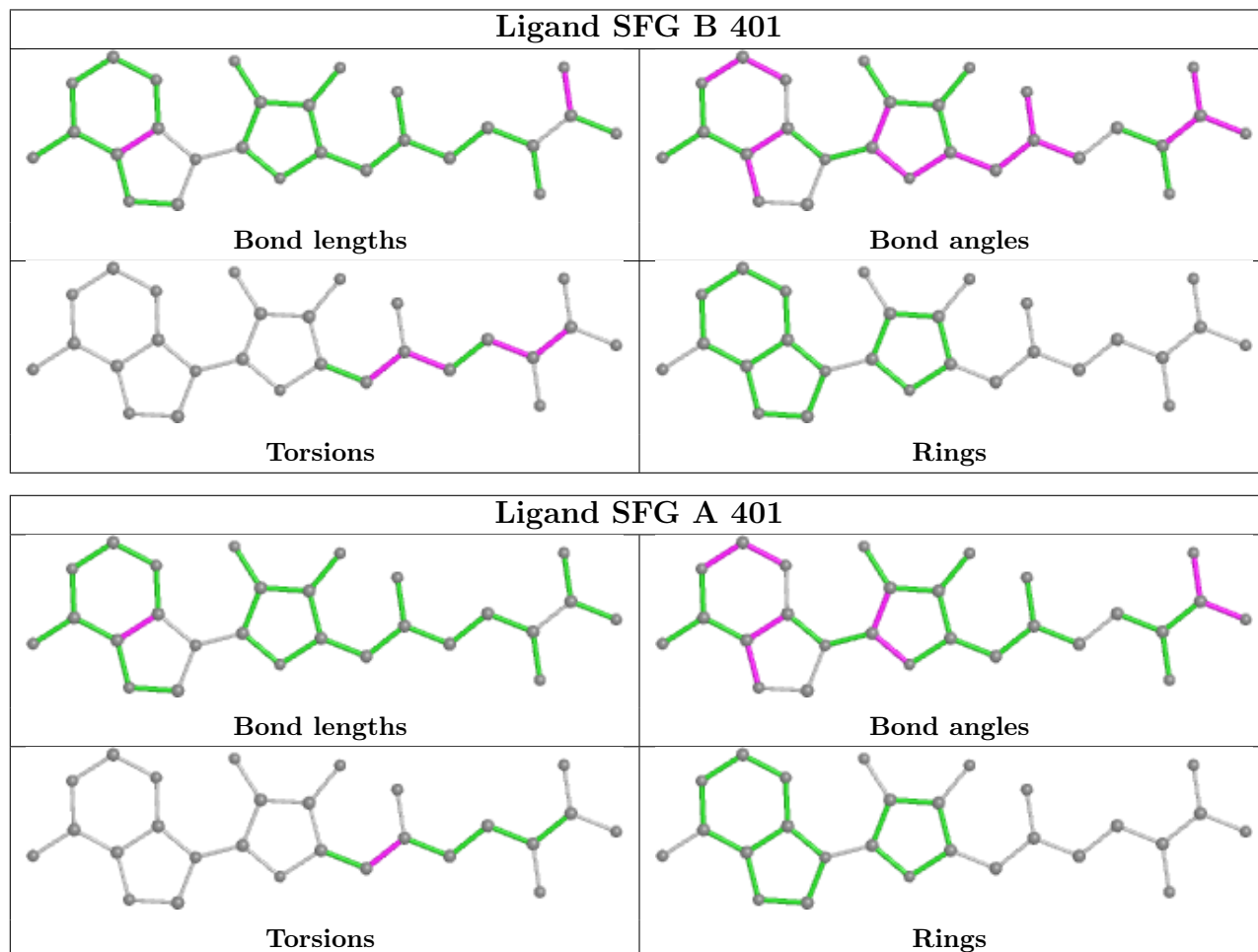
There are no ring outliers.

2 monomers are involved in 4 short contacts:

Mol	Chain	Res	Type	Clashes	Symm-Clashes
2	B	401	SFG	2	0
2	A	401	SFG	2	0

The following is a two-dimensional graphical depiction of Mogul quality analysis of bond lengths, bond angles, torsion angles, and ring geometry for all instances of the Ligand of Interest. In addition, ligands with molecular weight > 250 and outliers as shown on the validation Tables will also be included. For torsion angles, if less than 5% of the Mogul distribution of torsion angles is within 10 degrees of the torsion angle in question, then that torsion angle is considered an outlier. Any bond that is central to one or more torsion angles identified as an outlier by Mogul will be

highlighted in the graph. For rings, the root-mean-square deviation (RMSD) between the ring in question and similar rings identified by Mogul is calculated over all ring torsion angles. If the average RMSD is greater than 60 degrees and the minimal RMSD between the ring in question and any Mogul-identified rings is also greater than 60 degrees, then that ring is considered an outlier. The outliers are highlighted in purple. The color gray indicates Mogul did not find sufficient equivalents in the CSD to analyse the geometry.



## 5.7 Other polymers [i](#)

There are no such residues in this entry.

## 5.8 Polymer linkage issues [i](#)

There are no chain breaks in this entry.

## 6 Fit of model and data

### 6.1 Protein, DNA and RNA chains

In the following table, the column labelled ‘#RSRZ > 2’ contains the number (and percentage) of RSRZ outliers, followed by percent RSRZ outliers for the chain as percentile scores relative to all X-ray entries and entries of similar resolution. The OWAB column contains the minimum, median, 95<sup>th</sup> percentile and maximum values of the occupancy-weighted average B-factor per residue. The column labelled ‘Q < 0.9’ lists the number of (and percentage) of residues with an average occupancy less than 0.9.

Mol	Chain	Analysed	<RSRZ>	#RSRZ>2	OWAB(Å <sup>2</sup> )	Q<0.9
1	A	368/373 (98%)	0.47	23 (6%) 20 24	7, 23, 46, 58	1 (0%)
1	B	368/373 (98%)	0.40	20 (5%) 25 31	6, 21, 45, 55	0
All	All	736/746 (98%)	0.44	43 (5%) 23 28	6, 22, 46, 58	1 (0%)

All (43) RSRZ outliers are listed below:

Mol	Chain	Res	Type	RSRZ
1	A	300	ILE	9.8
1	B	157	LEU	6.3
1	A	140	ARG	4.9
1	B	117	VAL	4.7
1	B	301	GLY	4.6
1	A	299	LYS	4.4
1	B	300	ILE	4.4
1	B	118	SER	4.4
1	A	157	LEU	4.2
1	A	133	ILE	3.9
1	A	302	LYS	3.9
1	B	299	LYS	3.7
1	B	297	GLY	3.6
1	B	355	GLY	3.5
1	B	162	HIS	3.3
1	A	162	HIS	3.3
1	A	297	GLY	3.2
1	A	355	GLY	3.1
1	B	164	ALA	3.0
1	B	155	THR	2.9
1	A	93	ASP	2.8
1	A	174	ASP	2.8
1	B	298	LEU	2.7
1	B	116	LYS	2.7

*Continued on next page...*

*Continued from previous page...*

Mol	Chain	Res	Type	RSRZ
1	B	368	HIS	2.7
1	B	177	PHE	2.6
1	B	158	VAL	2.6
1	A	134	THR	2.6
1	A	138	ILE	2.5
1	A	117	VAL	2.3
1	B	120	THR	2.3
1	B	93	ASP	2.2
1	A	158	VAL	2.2
1	A	130	ASP	2.2
1	A	153	PHE	2.2
1	B	96	GLU	2.2
1	A	298	LEU	2.1
1	A	301	GLY	2.1
1	A	114	PHE	2.1
1	A	26	LEU	2.1
1	B	304	SER	2.0
1	A	159	ASN	2.0
1	A	98	ALA	2.0

## 6.2 Non-standard residues in protein, DNA, RNA chains [i](#)

There are no non-standard protein/DNA/RNA residues in this entry.

## 6.3 Carbohydrates [i](#)

There are no monosaccharides in this entry.

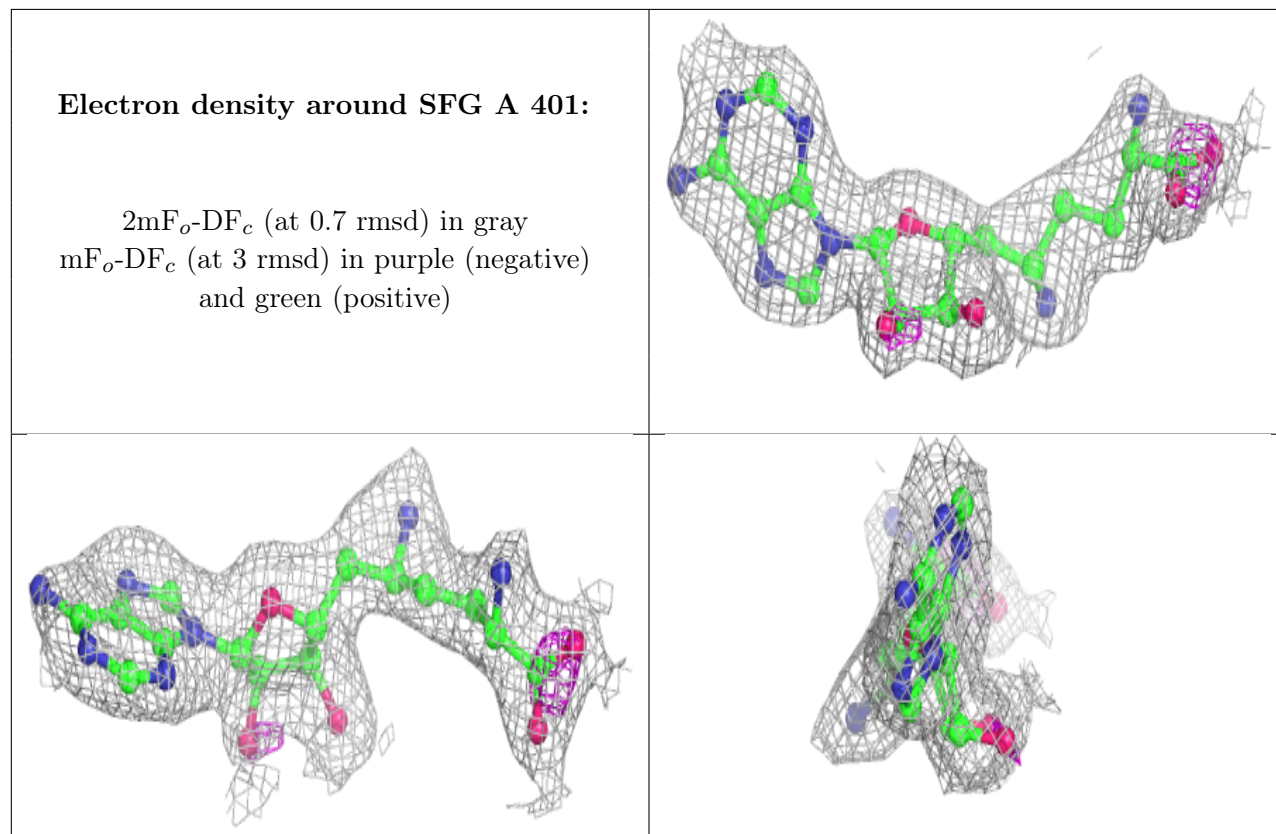
## 6.4 Ligands [i](#)

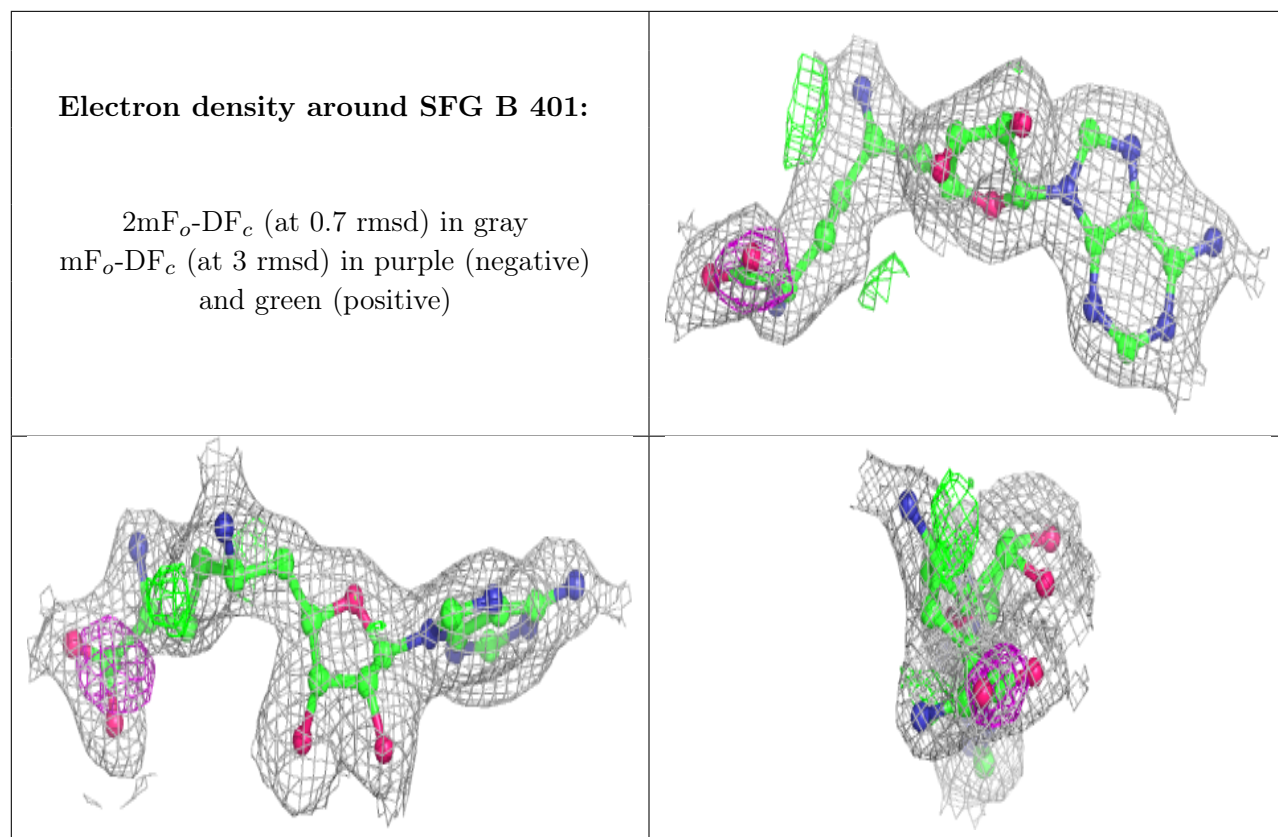
In the following table, the Atoms column lists the number of modelled atoms in the group and the number defined in the chemical component dictionary. The B-factors column lists the minimum, median, 95<sup>th</sup> percentile and maximum values of B factors of atoms in the group. The column labelled 'Q< 0.9' lists the number of atoms with occupancy less than 0.9.

Mol	Type	Chain	Res	Atoms	RSCC	RSR	B-factors(Å <sup>2</sup> )	Q<0.9
2	SFG	A	401	27/27	0.91	0.16	14,18,23,24	0
2	SFG	B	401	27/27	0.92	0.14	11,16,18,21	0

The following is a graphical depiction of the model fit to experimental electron density of all

instances of the Ligand of Interest. In addition, ligands with molecular weight > 250 and outliers as shown on the geometry validation Tables will also be included. Each fit is shown from different orientation to approximate a three-dimensional view.





## 6.5 Other polymers [i](#)

There are no such residues in this entry.