



Full wwPDB X-ray Structure Validation Report ⓘ

Sep 3, 2023 – 12:33 PM EDT

PDB ID : 3SLH
Title : 1.70 Angstrom resolution structure of 3-phosphoshikimate 1-carboxyvinyltransferase (AroA) from *Coxiella burnetii* in complex with shikimate-3-phosphate and glyphosate
Authors : Light, S.H.; Minasov, G.; Filippova, E.V.; Krishna, S.N.; Shuvalova, L.; Papazisi, L.; Anderson, W.F.; Center for Structural Genomics of Infectious Diseases (CSGID)
Deposited on : 2011-06-24
Resolution : 1.70 Å (reported)

This is a Full wwPDB X-ray Structure Validation Report for a publicly released PDB entry.

We welcome your comments at validation@mail.wwpdb.org

A user guide is available at

<https://www.wwpdb.org/validation/2017/XrayValidationReportHelp>

with specific help available everywhere you see the ⓘ symbol.

The types of validation reports are described at

<http://www.wwpdb.org/validation/2017/FAQs#types>.

The following versions of software and data (see [references ⓘ](#)) were used in the production of this report:

MolProbity : 4.02b-467
Mogul : 1.8.5 (274361), CSD as541be (2020)
Xtriage (Phenix) : 1.13
EDS : 2.35
buster-report : 1.1.7 (2018)
Percentile statistics : 20191225.v01 (using entries in the PDB archive December 25th 2019)
Refmac : 5.8.0158
CCP4 : 7.0.044 (Gargrove)
Ideal geometry (proteins) : Engh & Huber (2001)

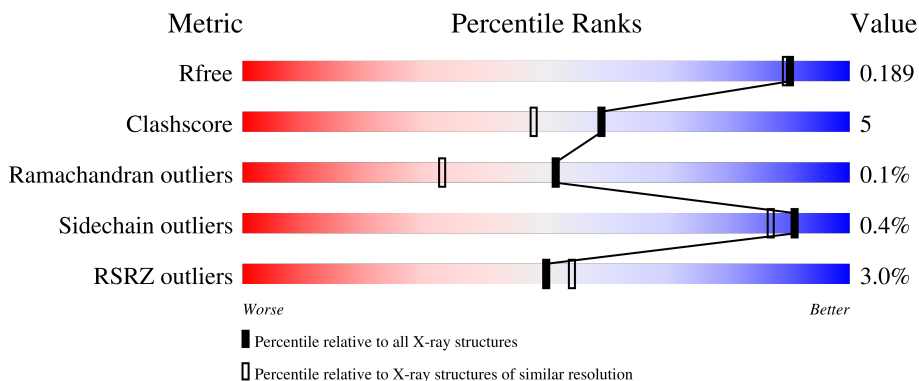
1 Overall quality at a glance

The following experimental techniques were used to determine the structure:

X-RAY DIFFRACTION

The reported resolution of this entry is 1.70 Å.

Percentile scores (ranging between 0-100) for global validation metrics of the entry are shown in the following graphic. The table shows the number of entries on which the scores are based.



Metric	Whole archive (#Entries)	Similar resolution (#Entries, resolution range(Å))
R_{free}	130704	4298 (1.70-1.70)
Clashscore	141614	4695 (1.70-1.70)
Ramachandran outliers	138981	4610 (1.70-1.70)
Sidechain outliers	138945	4610 (1.70-1.70)
RSRZ outliers	127900	4222 (1.70-1.70)

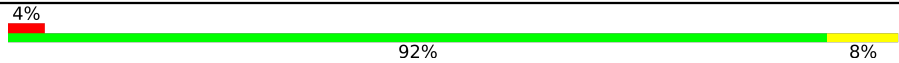
The table below summarises the geometric issues observed across the polymeric chains and their fit to the electron density. The red, orange, yellow and green segments of the lower bar indicate the fraction of residues that contain outliers for ≥ 3 , 2, 1 and 0 types of geometric quality criteria respectively. A grey segment represents the fraction of residues that are not modelled. The numeric value for each fraction is indicated below the corresponding segment, with a dot representing fractions $\leq 5\%$. The upper red bar (where present) indicates the fraction of residues that have poor fit to the electron density. The numeric value is given above the bar.

Mol	Chain	Length	Quality of chain
1	A	441	 2% 90% 9%
1	B	441	 3% 93% 6%
1	C	441	 3% 90% 9%

Continued on next page...

Ideal geometry (DNA, RNA) : Parkinson et al. (1996)
Validation Pipeline (wwPDB-VP) : 2.35

Continued from previous page...

Mol	Chain	Length	Quality of chain
1	D	441	 A horizontal bar chart representing the quality of chain. The bar is divided into three segments: a small red segment on the left labeled '4%', a large green segment in the middle labeled '92%', and a small yellow segment on the right labeled '8%'.

The following table lists non-polymeric compounds, carbohydrate monomers and non-standard residues in protein, DNA, RNA chains that are outliers for geometric or electron-density-fit criteria:

Mol	Type	Chain	Res	Chirality	Geometry	Clashes	Electron density
3	PO4	A	441[B]	-	-	X	-
3	PO4	B	440[B]	-	-	X	-

2 Entry composition [i](#)

There are 13 unique types of molecules in this entry. The entry contains 15366 atoms, of which 0 are hydrogens and 0 are deuteriums.

In the tables below, the ZeroOcc column contains the number of atoms modelled with zero occupancy, the AltConf column contains the number of residues with at least one atom in alternate conformation and the Trace column contains the number of residues modelled with at most 2 atoms.

- Molecule 1 is a protein called 3-phosphoshikimate 1-carboxyvinyltransferase.

Mol	Chain	Residues	Atoms					ZeroOcc	AltConf	Trace
			Total	C	N	O	S			
1	A	436	3410	2148	590	650	22	0	32	0
1	B	439	3345	2108	582	632	23	0	19	0
1	C	438	3364	2112	592	638	22	0	17	0
1	D	440	3307	2077	583	625	22	0	8	0

There are 12 discrepancies between the modelled and reference sequences:

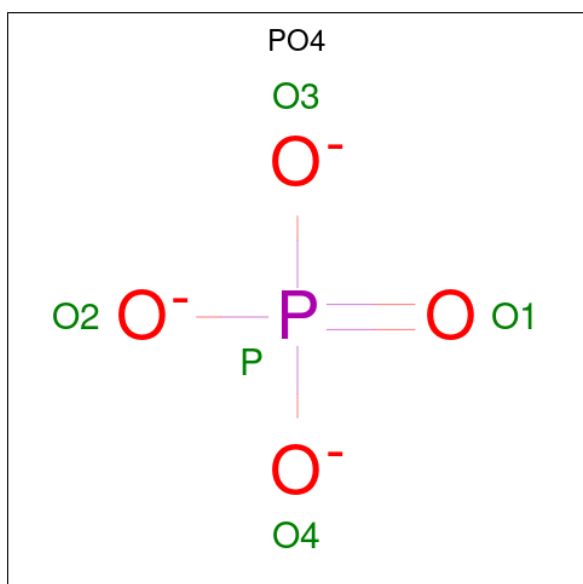
Chain	Residue	Modelled	Actual	Comment	Reference
A	-2	SER	-	expression tag	UNP Q83E11
A	-1	ASN	-	expression tag	UNP Q83E11
A	0	ALA	-	expression tag	UNP Q83E11
B	-2	SER	-	expression tag	UNP Q83E11
B	-1	ASN	-	expression tag	UNP Q83E11
B	0	ALA	-	expression tag	UNP Q83E11
C	-2	SER	-	expression tag	UNP Q83E11
C	-1	ASN	-	expression tag	UNP Q83E11
C	0	ALA	-	expression tag	UNP Q83E11
D	-2	SER	-	expression tag	UNP Q83E11
D	-1	ASN	-	expression tag	UNP Q83E11
D	0	ALA	-	expression tag	UNP Q83E11

- Molecule 2 is BETA-MERCAPTOETHANOL (three-letter code: BME) (formula: C₂H₆OS).



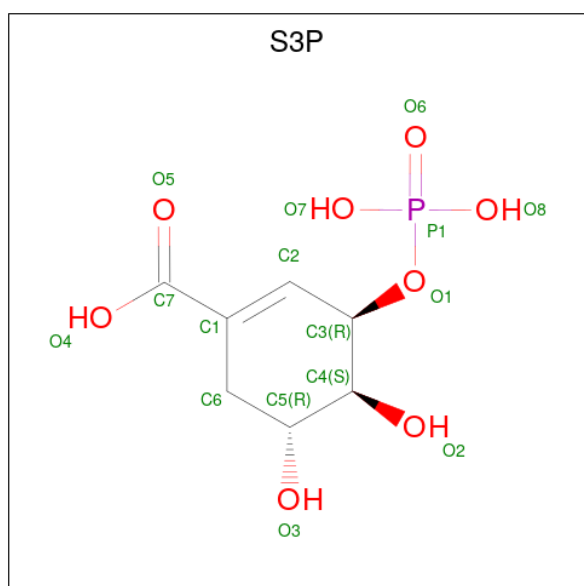
Mol	Chain	Residues	Atoms				ZeroOcc	AltConf
2	A	1	Total	C	O	S	0	0
			4	2	1	1		
2	A	1	Total	C	O	S	0	0
			4	2	1	1		
2	B	1	Total	C	O	S	0	1
			7	4	2	1		
2	C	1	Total	C	O	S	0	0
			4	2	1	1		
2	D	1	Total	C	O	S	0	0
			4	2	1	1		

- Molecule 3 is PHOSPHATE ION (three-letter code: PO4) (formula: O₄P).



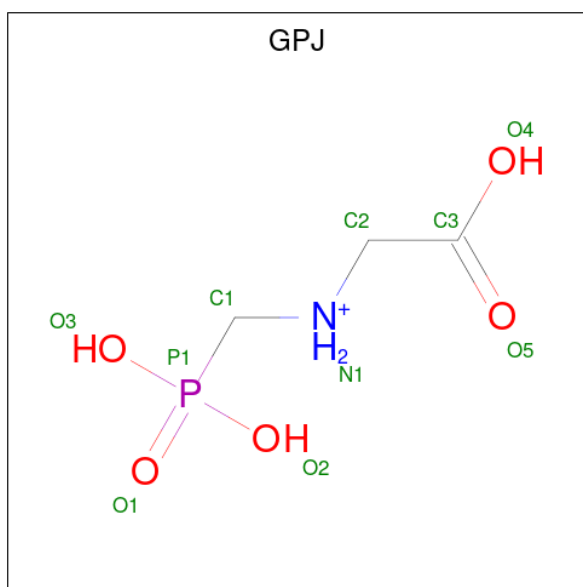
Mol	Chain	Residues	Atoms	ZeroOcc	AltConf
3	A	1	Total O P 5 4 1	0	1
3	A	1	Total O P 5 4 1	0	1
3	B	1	Total O P 5 4 1	0	1
3	C	1	Total O P 5 4 1	0	1

- Molecule 4 is SHIKIMATE-3-PHOSPHATE (three-letter code: S3P) (formula: $C_7H_{11}O_8P$).



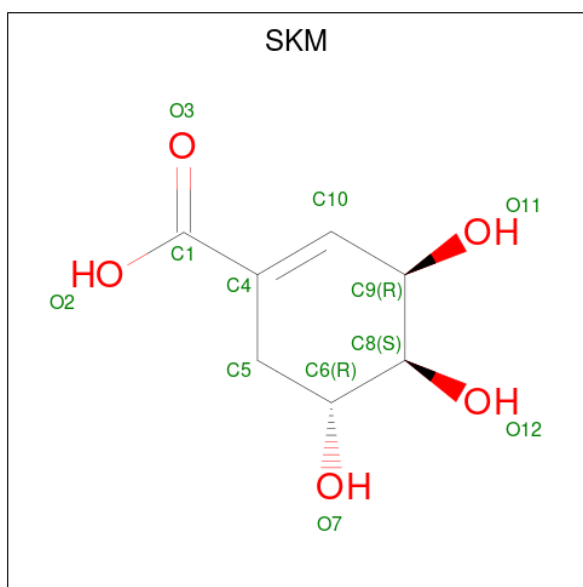
Mol	Chain	Residues	Atoms	ZeroOcc	AltConf
4	A	1	Total C O P 16 7 8 1	0	1
4	B	1	Total C O P 16 7 8 1	0	1
4	C	1	Total C O P 16 7 8 1	0	1
4	D	1	Total C O P 16 7 8 1	0	1

- Molecule 5 is GLYPHOSATE (three-letter code: GPJ) (formula: $C_3H_9NO_5P$).



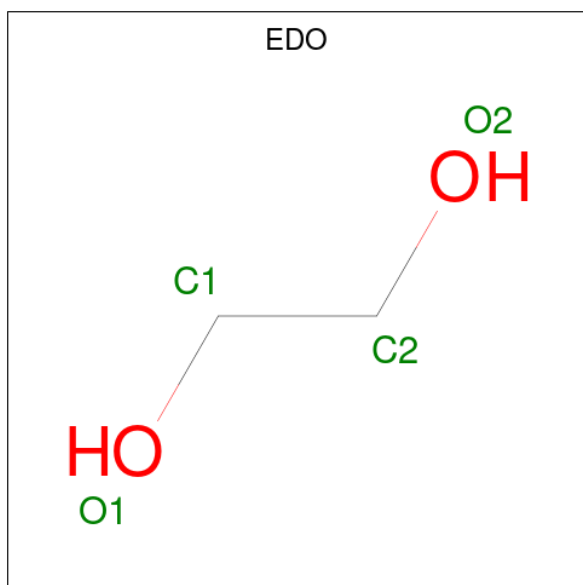
Mol	Chain	Residues	Atoms					ZeroOcc	AltConf
			Total	C	N	O	P		
5	A	1	Total 10	C 3	N 1	O 5	P 1	0	0
5	B	1	Total 10	C 3	N 1	O 5	P 1	0	0
5	B	1	Total 10	C 3	N 1	O 5	P 1	0	0
5	C	1	Total 10	C 3	N 1	O 5	P 1	0	0
5	D	1	Total 10	C 3	N 1	O 5	P 1	0	0

- Molecule 6 is (3R,4S,5R)-3,4,5-TRIHydroxycyclohex-1-ene-1-carboxylic acid (three-letter code: SKM) (formula: C₇H₁₀O₅).



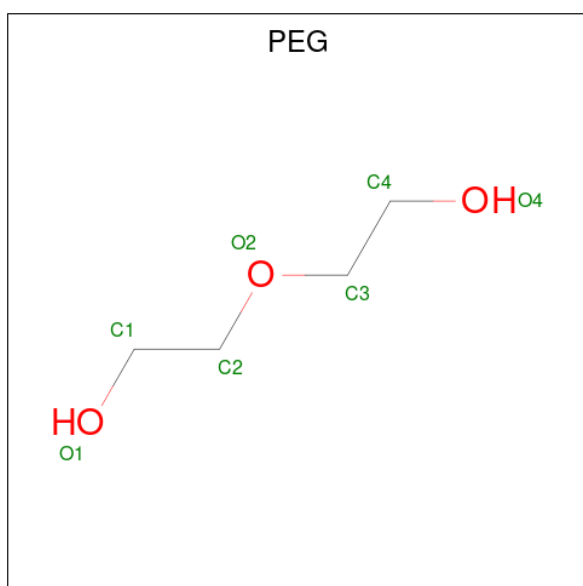
Mol	Chain	Residues	Atoms			ZeroOcc	AltConf
6	A	1	Total	C	O	0	1
			12	7	5		
6	B	1	Total	C	O	0	1
			12	7	5		
6	C	1	Total	C	O	0	1
			12	7	5		
6	D	1	Total	C	O	0	1
			12	7	5		

- Molecule 7 is 1,2-ETHANEDIOL (three-letter code: EDO) (formula: $C_2H_6O_2$).



Mol	Chain	Residues	Atoms	ZeroOcc	AltConf
7	A	1	Total C O 4 2 2	0	0
7	A	1	Total C O 4 2 2	0	0
7	C	1	Total C O 4 2 2	0	0
7	C	1	Total C O 4 2 2	0	0

- Molecule 8 is DI(HYDROXYETHYL)ETHER (three-letter code: PEG) (formula: C₄H₁₀O₃).



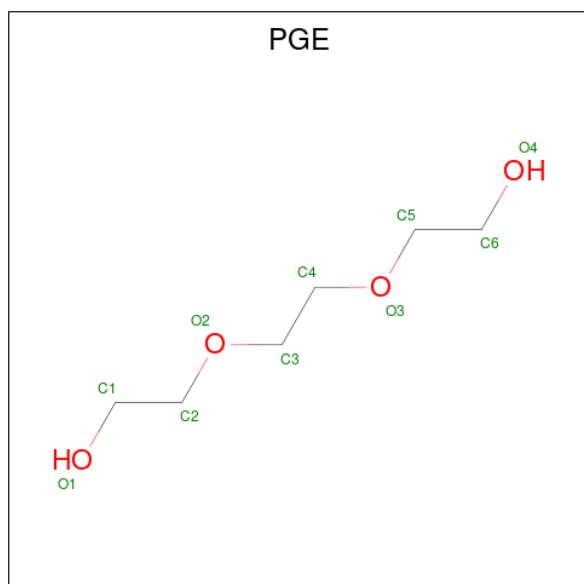
Mol	Chain	Residues	Atoms	ZeroOcc	AltConf
8	A	1	Total C O 7 4 3	0	0
8	A	1	Total C O 7 4 3	0	0
8	A	1	Total C O 7 4 3	0	0
8	A	1	Total C O 7 4 3	0	0
8	A	1	Total C O 7 4 3	0	0
8	A	1	Total C O 7 4 3	0	0
8	B	1	Total C O 7 4 3	0	0
8	B	1	Total C O 7 4 3	0	0

Continued on next page...

Continued from previous page...

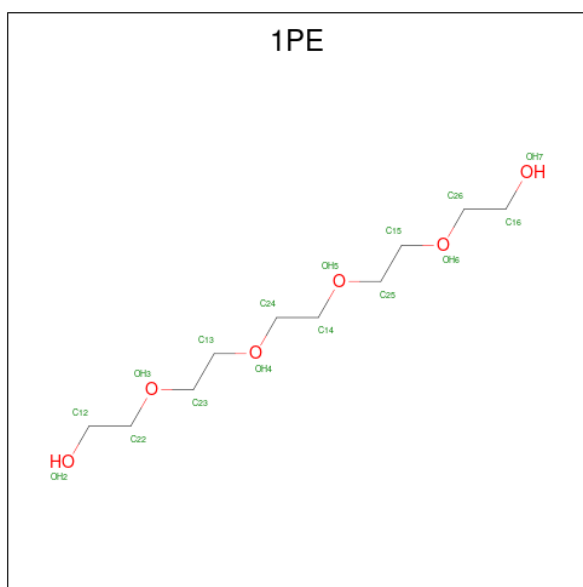
Mol	Chain	Residues	Atoms			ZeroOcc	AltConf
8	B	1	Total	C	O	0	0
			7	4	3		
8	C	1	Total	C	O	0	0
			7	4	3		
8	C	1	Total	C	O	0	0
			7	4	3		
8	D	1	Total	C	O	0	0
			7	4	3		
8	D	1	Total	C	O	0	0
			7	4	3		
8	D	1	Total	C	O	0	0
			7	4	3		

- Molecule 9 is TRIETHYLENE GLYCOL (three-letter code: PGE) (formula: C₆H₁₄O₄).



Mol	Chain	Residues	Atoms			ZeroOcc	AltConf
9	B	1	Total	C	O	0	0
			10	6	4		

- Molecule 10 is PENTAETHYLENE GLYCOL (three-letter code: 1PE) (formula: C₁₀H₂₂O₆).

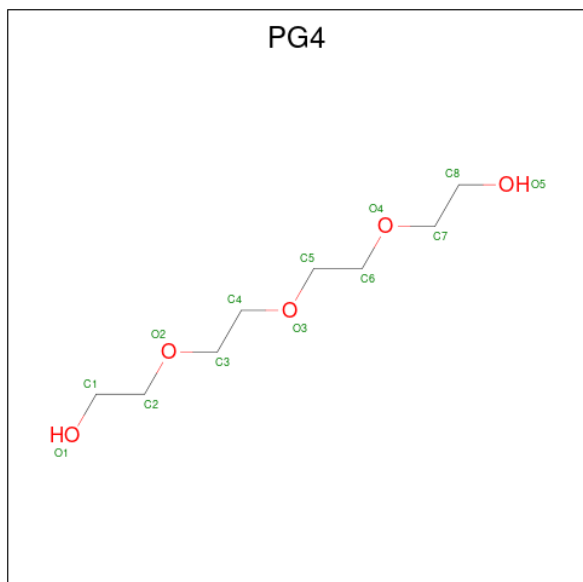


Mol	Chain	Residues	Atoms		ZeroOcc	AltConf
10	B	1	Total	C O	0	0
			16	10 6		

- Molecule 11 is CHLORIDE ION (three-letter code: CL) (formula: Cl).

Mol	Chain	Residues	Atoms		ZeroOcc	AltConf
11	C	1	Total	Cl	0	0
			1	1		
11	D	1	Total	Cl	0	0
			1	1		

- Molecule 12 is TETRAETHYLENE GLYCOL (three-letter code: PG4) (formula: C₈H₁₈O₅).



Mol	Chain	Residues	Atoms	ZeroOcc	AltConf
12	C	1	Total C O 13 8 5	0	0
12	C	1	Total C O 13 8 5	0	0
12	D	1	Total C O 13 8 5	0	0

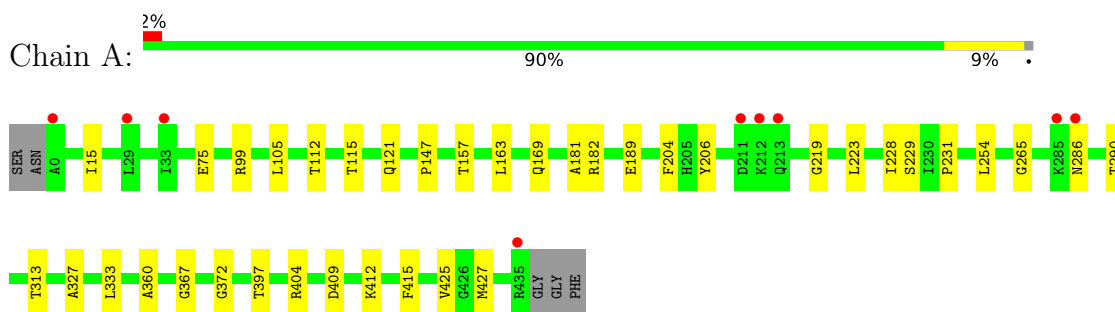
- Molecule 13 is water.

Mol	Chain	Residues	Atoms	ZeroOcc	AltConf
13	A	430	Total O 440 440	0	18
13	B	423	Total O 434 434	0	17
13	C	336	Total O 343 343	0	11
13	D	336	Total O 337 337	1	1

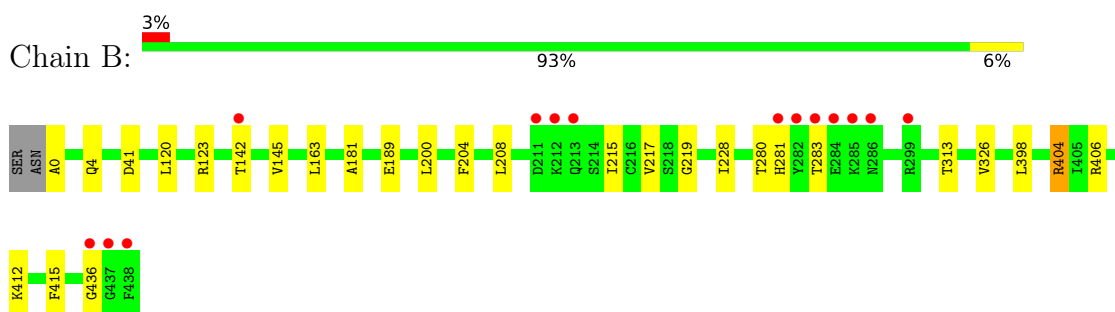
3 Residue-property plots [i](#)

These plots are drawn for all protein, RNA, DNA and oligosaccharide chains in the entry. The first graphic for a chain summarises the proportions of the various outlier classes displayed in the second graphic. The second graphic shows the sequence view annotated by issues in geometry and electron density. Residues are color-coded according to the number of geometric quality criteria for which they contain at least one outlier: green = 0, yellow = 1, orange = 2 and red = 3 or more. A red dot above a residue indicates a poor fit to the electron density ($RSRZ > 2$). Stretches of 2 or more consecutive residues without any outlier are shown as a green connector. Residues present in the sample, but not in the model, are shown in grey.

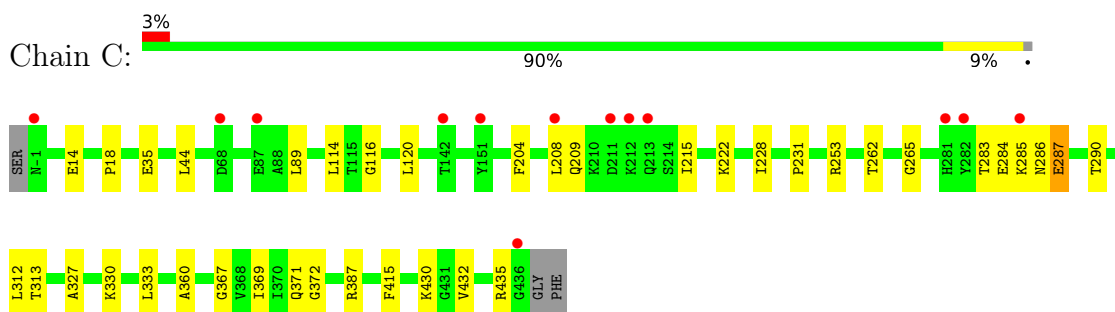
- Molecule 1: 3-phosphoshikimate 1-carboxyvinyltransferase



- Molecule 1: 3-phosphoshikimate 1-carboxyvinyltransferase

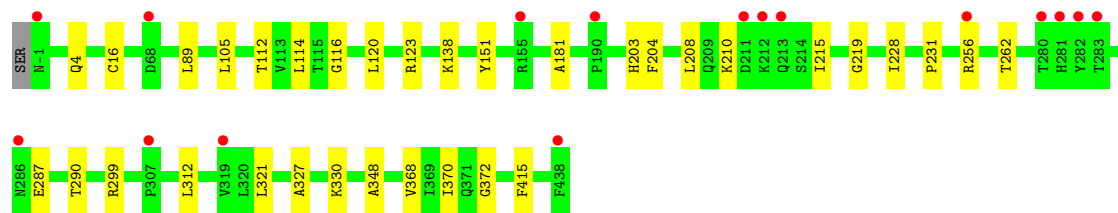


- Molecule 1: 3-phosphoshikimate 1-carboxyvinyltransferase



- Molecule 1: 3-phosphoshikimate 1-carboxyvinyltransferase





4 Data and refinement statistics i

Property	Value	Source
Space group	P 1 21 1	Depositor
Cell constants a, b, c, α , β , γ	46.25Å 186.64Å 95.79Å 90.00° 91.51° 90.00°	Depositor
Resolution (Å)	29.64 – 1.70 29.64 – 1.70	Depositor EDS
% Data completeness (in resolution range)	99.8 (29.64-1.70) 99.8 (29.64-1.70)	Depositor EDS
R_{merge}	0.06	Depositor
R_{sym}	(Not available)	Depositor
$\langle I/\sigma(I) \rangle$ ¹	2.82 (at 1.70Å)	Xtrriage
Refinement program	REFMAC 5.5.0109	Depositor
R, R_{free}	0.149 , 0.182 0.157 , 0.189	Depositor DCC
R_{free} test set	8858 reflections (5.01%)	wwPDB-VP
Wilson B-factor (Å ²)	19.1	Xtrriage
Anisotropy	0.320	Xtrriage
Bulk solvent k_{sol} (e/Å ³), B_{sol} (Å ²)	0.36 , 54.1	EDS
L-test for twinning ²	$\langle L \rangle = 0.50$, $\langle L^2 \rangle = 0.33$	Xtrriage
Estimated twinning fraction	0.047 for h,-k,-l	Xtrriage
F_o, F_c correlation	0.97	EDS
Total number of atoms	15366	wwPDB-VP
Average B, all atoms (Å ²)	26.0	wwPDB-VP

Xtrriage's analysis on translational NCS is as follows: *The largest off-origin peak in the Patterson function is 4.46% of the height of the origin peak. No significant pseudotranslation is detected.*

¹Intensities estimated from amplitudes.

²Theoretical values of $\langle |L| \rangle$, $\langle L^2 \rangle$ for acentric reflections are 0.5, 0.333 respectively for untwinned datasets, and 0.375, 0.2 for perfectly twinned datasets.

5 Model quality [i](#)

5.1 Standard geometry [i](#)

Bond lengths and bond angles in the following residue types are not validated in this section: S3P, GPJ, PEG, CL, BME, EDO, PGE, 1PE, SKM, PG4, PO4

The Z score for a bond length (or angle) is the number of standard deviations the observed value is removed from the expected value. A bond length (or angle) with $|Z| > 5$ is considered an outlier worth inspection. RMSZ is the root-mean-square of all Z scores of the bond lengths (or angles).

Mol	Chain	Bond lengths		Bond angles	
		RMSZ	# Z >5	RMSZ	# Z >5
1	A	0.62	0/3537	0.76	2/4794 (0.0%)
1	B	0.63	0/3441	0.76	1/4662 (0.0%)
1	C	0.52	0/3445	0.70	1/4666 (0.0%)
1	D	0.51	0/3377	0.69	0/4574
All	All	0.57	0/13800	0.73	4/18696 (0.0%)

There are no bond length outliers.

All (4) bond angle outliers are listed below:

Mol	Chain	Res	Type	Atoms	Z	Observed(°)	Ideal(°)
1	A	404	ARG	NE-CZ-NH1	8.01	124.30	120.30
1	A	404	ARG	NE-CZ-NH2	-7.53	116.53	120.30
1	C	387	ARG	NE-CZ-NH2	-5.24	117.68	120.30
1	B	404	ARG	NE-CZ-NH1	-5.18	117.71	120.30

There are no chirality outliers.

There are no planarity outliers.

5.2 Too-close contacts [i](#)

In the following table, the Non-H and H(model) columns list the number of non-hydrogen atoms and hydrogen atoms in the chain respectively. The H(added) column lists the number of hydrogen atoms added and optimized by MolProbity. The Clashes column lists the number of clashes within the asymmetric unit, whereas Symm-Clashes lists symmetry-related clashes.

Mol	Chain	Non-H	H(model)	H(added)	Clashes	Symm-Clashes
1	A	3410	0	3550	42	0
1	B	3345	0	3483	26	0
1	C	3364	0	3475	38	0

Continued on next page...

Continued from previous page...

Mol	Chain	Non-H	H(model)	H(added)	Clashes	Symm-Clashes
1	D	3307	0	3414	25	0
2	A	8	0	10	0	0
2	B	7	0	10	0	0
2	C	4	0	5	0	0
2	D	4	0	5	0	0
3	A	10	0	0	2	0
3	B	5	0	0	3	0
3	C	5	0	0	1	0
4	A	16	0	8	0	0
4	B	16	0	8	0	0
4	C	16	0	8	0	0
4	D	16	0	8	0	0
5	A	10	0	6	0	0
5	B	20	0	12	0	0
5	C	10	0	6	0	0
5	D	10	0	6	0	0
6	A	12	0	9	2	0
6	B	12	0	9	3	0
6	C	12	0	9	1	0
6	D	12	0	9	0	0
7	A	8	0	12	1	0
7	C	8	0	12	0	0
8	A	42	0	60	0	0
8	B	21	0	30	0	0
8	C	14	0	20	1	0
8	D	21	0	30	1	0
9	B	10	0	14	0	0
10	B	16	0	22	1	0
11	C	1	0	0	0	0
11	D	1	0	0	1	0
12	C	26	0	36	0	0
12	D	13	0	18	1	0
13	A	440	0	0	1	0
13	B	434	0	0	4	0
13	C	343	0	0	1	0
13	D	337	0	0	3	0
All	All	15366	0	14304	133	0

The all-atom clashscore is defined as the number of clashes found per 1000 atoms (including hydrogen atoms). The all-atom clashscore for this structure is 5.

All (133) close contacts within the same asymmetric unit are listed below, sorted by their clash magnitude.

Atom-1	Atom-2	Interatomic distance (Å)	Clash overlap (Å)
1:A:228[A]:ILE:HD12	1:A:286[A]:ASN:OD1	1.40	1.17
1:C:435[B]:ARG:HG2	1:C:435[B]:ARG:HH11	1.18	1.09
1:C:435[B]:ARG:HH11	1:C:435[B]:ARG:CG	1.66	1.08
1:A:228[A]:ILE:HD13	1:A:286[A]:ASN:HB3	1.37	1.02
1:A:412[B]:LYS:HB3	1:A:412[B]:LYS:NZ	1.73	1.01
1:A:412[B]:LYS:HB3	1:A:412[B]:LYS:HZ3	1.20	1.00
1:A:228[A]:ILE:CD1	1:A:286[A]:ASN:CB	2.42	0.96
1:A:228[A]:ILE:HD13	1:A:286[A]:ASN:CB	1.96	0.95
1:A:228[A]:ILE:HD12	1:A:286[A]:ASN:CG	1.89	0.93
1:A:15[B]:ILE:HG23	1:A:254:LEU:HD23	1.51	0.91
1:A:15[B]:ILE:CG2	1:A:254:LEU:HD23	2.02	0.90
1:A:231:PRO:HB3	1:A:290[B]:THR:HG22	1.54	0.88
1:C:435[B]:ARG:HH11	1:C:435[B]:ARG:CB	1.87	0.88
1:A:231:PRO:HB3	1:A:290[B]:THR:CG2	2.08	0.82
1:C:435[B]:ARG:CB	1:C:435[B]:ARG:NH1	2.42	0.82
1:A:412[B]:LYS:NZ	1:A:412[B]:LYS:CB	2.41	0.82
1:C:435[B]:ARG:CG	1:C:435[B]:ARG:NH1	2.38	0.81
1:A:228[A]:ILE:CD1	1:A:286[A]:ASN:CG	2.51	0.78
1:A:228[A]:ILE:CD1	1:A:286[A]:ASN:OD1	2.30	0.78
1:C:435[B]:ARG:HG2	1:C:435[B]:ARG:NH1	1.94	0.77
1:C:435[B]:ARG:NH1	1:C:435[B]:ARG:HB2	2.01	0.76
11:D:440:CL:CL	13:D:1418:HOH:O	2.43	0.73
1:B:200[B]:LEU:HD11	13:B:888:HOH:O	1.94	0.68
1:B:208[B]:LEU:CD2	1:B:217:VAL:CG1	2.75	0.65
1:B:208[B]:LEU:CD2	1:B:217:VAL:HG13	2.27	0.64
1:B:208[B]:LEU:HD23	1:B:217:VAL:CG1	2.27	0.64
3:A:441[B]:PO4:P	6:A:445[B]:SKM:H11	2.22	0.63
1:C:204:PHE:CZ	1:C:228:ILE:HD11	2.34	0.63
1:A:115[A]:THR:OG1	1:A:121:GLN:NE2	2.31	0.62
1:C:283:THR:HB	1:C:285:LYS:HD3	1.81	0.62
1:D:16:CYS:SG	1:D:256:ARG:NH1	2.73	0.62
1:B:0:ALA:HB2	1:B:436:GLY:HA3	1.80	0.62
1:C:430:LYS:HB2	8:C:447:PEG:H32	1.81	0.61
1:A:228[A]:ILE:CD1	1:A:286[A]:ASN:HB2	2.29	0.61
1:D:89:LEU:HD12	1:D:114[A]:LEU:CD2	2.33	0.59
1:D:89:LEU:HB2	1:D:114[A]:LEU:HD23	1.85	0.58
1:B:0:ALA:CB	1:B:436:GLY:HA3	2.33	0.58
1:A:157[B]:THR:HG21	1:C:285:LYS:HG3	1.85	0.58
3:B:440[B]:PO4:P	6:B:443[B]:SKM:H11	2.27	0.58
1:A:397:THR:HG22	1:A:427[A]:MET:HB2	1.87	0.57
1:C:89:LEU:HD12	1:C:114[A]:LEU:CD2	2.34	0.57
1:C:330:LYS:HD2	1:C:369[B]:ILE:HD11	1.86	0.56

Continued on next page...

Continued from previous page...

Atom-1	Atom-2	Interatomic distance (Å)	Clash overlap (Å)
1:A:412[B]:LYS:CB	1:A:412[B]:LYS:HZ2	2.16	0.56
3:C:441[B]:PO4:P	6:C:443[B]:SKM:H11	2.29	0.56
1:D:89:LEU:HD12	1:D:114[A]:LEU:HD21	1.88	0.56
1:B:204:PHE:CZ	1:B:228[A]:ILE:HD11	2.40	0.56
1:C:231:PRO:HB3	1:C:290:THR:HG22	1.88	0.56
1:D:299[B]:ARG:HG2	13:D:787:HOH:O	2.06	0.55
1:B:4:GLN:OE1	1:B:404:ARG:HD3	2.06	0.55
1:B:215[A]:ILE:HD12	10:B:449:1PE:H142	1.88	0.55
1:C:116:GLY:HA3	1:C:120:LEU:HD23	1.88	0.55
1:B:208[B]:LEU:HD23	1:B:217:VAL:HG12	1.89	0.54
1:A:163:LEU:HD12	1:A:189:GLU:HG2	1.89	0.54
1:C:360:ALA:HB3	1:C:371[B]:GLN:HB2	1.90	0.53
1:B:208[B]:LEU:HD21	1:B:217:VAL:CG1	2.38	0.53
1:B:163:LEU:HD12	1:B:189:GLU:HG2	1.90	0.53
1:C:435[B]:ARG:HB2	1:C:435[B]:ARG:CZ	2.38	0.53
1:C:35:GLU:HG3	1:C:222:LYS:HE3	1.91	0.53
1:D:215:ILE:HD12	1:D:215:ILE:N	2.22	0.53
1:A:228[A]:ILE:HD12	1:A:229[A]:SER:H	1.73	0.52
1:C:208:LEU:HD23	1:C:209:GLN:N	2.24	0.52
1:C:35:GLU:HG3	1:C:222:LYS:CE	2.40	0.51
1:B:208[B]:LEU:HD23	1:B:217:VAL:HG13	1.88	0.51
1:C:231:PRO:HB3	1:C:290:THR:CG2	2.41	0.51
1:A:182:ARG:NH2	1:C:284:GLU:O	2.44	0.51
1:A:105:LEU:HD13	1:A:112[A]:THR:HG21	1.92	0.51
1:B:142:THR:O	1:B:145:VAL:HG22	2.12	0.50
1:B:120:LEU:HD12	1:B:123:ARG:HG3	1.93	0.50
1:C:14:GLU:OE1	1:C:253:ARG:NH2	2.41	0.50
1:C:215:ILE:HD12	1:C:215:ILE:N	2.26	0.50
1:C:360:ALA:HB3	1:C:371[A]:GLN:HB3	1.92	0.50
1:A:290[B]:THR:HG23	13:A:1195:HOH:O	2.12	0.49
3:B:440[B]:PO4:O1	6:B:443[B]:SKM:O11	2.25	0.49
1:A:15[A]:ILE:HD13	1:A:425:VAL:HG11	1.95	0.49
1:D:231:PRO:HB3	1:D:290:THR:HG22	1.94	0.49
1:A:157[A]:THR:HG21	1:C:285:LYS:HA	1.94	0.49
1:D:208:LEU:C	1:D:208:LEU:HD23	2.33	0.49
1:A:204:PHE:CZ	1:A:228[B]:ILE:HD11	2.47	0.49
1:A:15[B]:ILE:HG21	1:A:254:LEU:HD23	1.89	0.49
1:C:208:LEU:HD23	1:C:208:LEU:C	2.33	0.48
1:A:181:ALA:O	1:A:219:GLY:HA3	2.14	0.48
1:D:4:GLN:HG3	13:D:683:HOH:O	2.13	0.48
1:A:75:GLU:CD	1:B:406[A]:ARG:HH22	2.16	0.48

Continued on next page...

Continued from previous page...

Atom-1	Atom-2	Interatomic distance (Å)	Clash overlap (Å)
3:B:440[B]:PO4:P	6:B:443[B]:SKM:O11	2.72	0.48
1:C:286:ASN:O	1:C:287:GLU:HG3	2.14	0.48
1:B:208[B]:LEU:HD21	1:B:217:VAL:HG13	1.96	0.47
1:D:330:LYS:HB2	1:D:330:LYS:NZ	2.28	0.47
1:A:115[B]:THR:HG22	1:A:147:PRO:HB3	1.96	0.47
1:A:75:GLU:CD	1:B:406[A]:ARG:NH2	2.68	0.47
1:B:181:ALA:O	1:B:219:GLY:HA3	2.15	0.46
1:C:18:PRO:HB2	1:C:44:LEU:HD13	1.96	0.46
1:D:120:LEU:HD12	1:D:123:ARG:HG3	1.95	0.46
1:D:262:THR:HA	1:D:312:LEU:HD22	1.96	0.46
1:C:89:LEU:HB2	1:C:114[A]:LEU:HD23	1.97	0.46
1:D:368[B]:VAL:HG12	1:D:370:ILE:HG13	1.97	0.46
1:C:287:GLU:HB2	13:C:1571:HOH:O	2.17	0.45
1:D:204:PHE:CZ	1:D:228:ILE:HD11	2.51	0.44
1:A:397:THR:CG2	1:A:427[A]:MET:HB2	2.47	0.44
1:C:89:LEU:HD12	1:C:114[A]:LEU:HD21	1.97	0.44
1:B:208[B]:LEU:CD2	1:B:217:VAL:HG12	2.47	0.44
1:D:327:ALA:O	1:D:372:GLY:HA3	2.17	0.44
1:B:283[A]:THR:HG22	13:B:462:HOH:O	2.17	0.44
1:A:333:LEU:O	1:A:367:GLY:HA3	2.17	0.43
1:C:313:THR:HG22	1:C:313:THR:O	2.18	0.43
1:D:114[B]:LEU:HD12	1:D:114[B]:LEU:N	2.32	0.43
1:D:203:HIS:HD1	1:D:287:GLU:CD	2.22	0.43
1:D:321:LEU:CD2	1:D:368[A]:VAL:HG11	2.48	0.43
1:C:262:THR:HA	1:C:312:LEU:HD22	2.00	0.43
1:B:326:VAL:HG11	1:B:398:LEU:HD23	2.00	0.43
1:A:206:TYR:HB2	1:A:223:LEU:HD23	2.01	0.43
1:A:327:ALA:O	1:A:372:GLY:HA3	2.18	0.43
1:D:348:ALA:HB1	8:D:446:PEG:H31	2.00	0.43
1:A:265:GLY:HA3	1:A:313:THR:OG1	2.18	0.42
1:B:412:LYS:NZ	13:B:1346[A]:HOH:O	2.39	0.42
1:C:430:LYS:HE3	1:C:432:VAL:CG1	2.50	0.42
1:D:210:LYS:HB2	12:D:447:PG4:H31	2.01	0.42
1:C:265:GLY:HA3	1:C:313:THR:OG1	2.20	0.41
1:C:327:ALA:O	1:C:372:GLY:HA3	2.20	0.41
1:D:89:LEU:HD12	1:D:114[A]:LEU:HD23	2.02	0.41
1:B:313:THR:O	1:B:313:THR:HG22	2.21	0.41
1:A:360:ALA:HB1	7:A:449:EDO:H22	2.02	0.41
3:A:441[B]:PO4:P	6:A:445[B]:SKM:O11	2.78	0.41
1:C:333:LEU:O	1:C:367:GLY:HA3	2.20	0.41
1:A:99:ARG:HD2	1:A:169:GLN:OE1	2.21	0.41

Continued on next page...

Continued from previous page...

Atom-1	Atom-2	Interatomic distance (Å)	Clash overlap (Å)
1:A:409[A]:ASP:O	1:A:412[A]:LYS:NZ	2.54	0.40
1:B:0:ALA:N	13:B:1527:HOH:O	2.51	0.40
1:D:105:LEU:HD13	1:D:112:THR:HG21	2.03	0.40
1:B:280[B]:THR:OG1	1:B:281:HIS:N	2.54	0.40
1:D:116:GLY:HA3	1:D:120:LEU:HD23	2.03	0.40
1:D:138:LYS:HD2	1:D:151:TYR:CD2	2.56	0.40
1:D:181:ALA:O	1:D:219:GLY:HA3	2.21	0.40

There are no symmetry-related clashes.

5.3 Torsion angles [i](#)

5.3.1 Protein backbone [i](#)

In the following table, the Percentiles column shows the percent Ramachandran outliers of the chain as a percentile score with respect to all X-ray entries followed by that with respect to entries of similar resolution.

The Analysed column shows the number of residues for which the backbone conformation was analysed, and the total number of residues.

Mol	Chain	Analysed	Favoured	Allowed	Outliers	Percentiles	
1	A	466/441 (106%)	459 (98%)	7 (2%)	0	100	100
1	B	455/441 (103%)	444 (98%)	11 (2%)	0	100	100
1	C	453/441 (103%)	444 (98%)	8 (2%)	1 (0%)	47	30
1	D	446/441 (101%)	435 (98%)	11 (2%)	0	100	100
All	All	1820/1764 (103%)	1782 (98%)	37 (2%)	1 (0%)	51	33

All (1) Ramachandran outliers are listed below:

Mol	Chain	Res	Type
1	C	287	GLU

5.3.2 Protein sidechains [i](#)

In the following table, the Percentiles column shows the percent sidechain outliers of the chain as a percentile score with respect to all X-ray entries followed by that with respect to entries of similar resolution.

The Analysed column shows the number of residues for which the sidechain conformation was analysed, and the total number of residues.

Mol	Chain	Analysed	Rotameric	Outliers	Percentiles	
1	A	380/352 (108%)	379 (100%)	1 (0%)	92	89
1	B	368/352 (104%)	366 (100%)	2 (0%)	88	83
1	C	367/352 (104%)	366 (100%)	1 (0%)	92	89
1	D	359/352 (102%)	358 (100%)	1 (0%)	92	89
All	All	1474/1408 (105%)	1469 (100%)	5 (0%)	91	89

All (5) residues with a non-rotameric sidechain are listed below:

Mol	Chain	Res	Type
1	A	415	PHE
1	B	41	ASP
1	B	415	PHE
1	C	415	PHE
1	D	415	PHE

Sometimes sidechains can be flipped to improve hydrogen bonding and reduce clashes. All (2) such sidechains are listed below:

Mol	Chain	Res	Type
1	A	121	GLN
1	B	58	GLN

5.3.3 RNA [i](#)

There are no RNA molecules in this entry.

5.4 Non-standard residues in protein, DNA, RNA chains [i](#)

There are no non-standard protein/DNA/RNA residues in this entry.

5.5 Carbohydrates [i](#)

There are no monosaccharides in this entry.

5.6 Ligand geometry

Of 48 ligands modelled in this entry, 2 are monoatomic - leaving 46 for Mogul analysis.

In the following table, the Counts columns list the number of bonds (or angles) for which Mogul statistics could be retrieved, the number of bonds (or angles) that are observed in the model and the number of bonds (or angles) that are defined in the Chemical Component Dictionary. The Link column lists molecule types, if any, to which the group is linked. The Z score for a bond length (or angle) is the number of standard deviations the observed value is removed from the expected value. A bond length (or angle) with $|Z| > 2$ is considered an outlier worth inspection. RMSZ is the root-mean-square of all Z scores of the bond lengths (or angles).

Mol	Type	Chain	Res	Link	Bond lengths			Bond angles		
					Counts	RMSZ	# Z > 2	Counts	RMSZ	# Z > 2
8	PEG	D	444	-	6,6,6	0.53	0	5,5,5	0.25	0
3	PO4	B	440[B]	-	4,4,4	1.03	0	6,6,6	0.51	0
7	EDO	A	446	-	3,3,3	0.55	0	2,2,2	0.13	0
8	PEG	C	445	-	6,6,6	0.41	0	5,5,5	0.32	0
8	PEG	D	446	-	6,6,6	0.41	0	5,5,5	0.29	0
12	PG4	C	446	-	12,12,12	0.55	0	11,11,11	0.31	0
8	PEG	A	453	-	6,6,6	0.54	0	5,5,5	0.24	0
7	EDO	C	449	-	3,3,3	0.47	0	2,2,2	0.20	0
8	PEG	A	452	-	6,6,6	0.34	0	5,5,5	0.43	0
7	EDO	C	448	-	3,3,3	0.43	0	2,2,2	0.32	0
8	PEG	A	450	-	6,6,6	0.46	0	5,5,5	0.26	0
2	BME	B	439[B]	-	3,3,3	0.37	0	1,2,2	0.03	0
2	BME	C	439	1	3,3,3	0.49	0	1,2,2	0.49	0
12	PG4	D	447	-	12,12,12	0.50	0	11,11,11	0.23	0
9	PGE	B	447	-	9,9,9	0.51	0	8,8,8	0.24	0
5	GPJ	D	441	-	9,9,9	1.03	0	9,12,12	1.24	1 (11%)
8	PEG	C	447	-	6,6,6	0.41	0	5,5,5	0.75	0
6	SKM	D	443[B]	-	12,12,12	2.90	1 (8%)	16,17,17	1.44	1 (6%)
8	PEG	B	445	-	6,6,6	0.37	0	5,5,5	0.28	0
3	PO4	A	441[B]	-	4,4,4	0.80	0	6,6,6	0.65	0
4	S3P	B	441[A]	-	15,16,16	1.10	1 (6%)	20,24,24	0.88	0
7	EDO	A	449	-	3,3,3	0.53	0	2,2,2	0.14	0
5	GPJ	B	444	-	9,9,9	1.09	0	9,12,12	1.05	0
8	PEG	A	448	-	6,6,6	0.44	0	5,5,5	0.22	0
4	S3P	D	442[A]	-	15,16,16	1.29	1 (6%)	20,24,24	0.98	1 (5%)
3	PO4	A	442[A]	-	4,4,4	1.07	0	6,6,6	0.79	0
6	SKM	B	443[B]	-	12,12,12	2.95	1 (8%)	16,17,17	1.40	1 (6%)
4	S3P	A	443[A]	-	15,16,16	1.15	1 (6%)	20,24,24	0.99	0
8	PEG	B	446	-	6,6,6	0.49	0	5,5,5	0.16	0
4	S3P	C	444[A]	-	15,16,16	1.18	1 (6%)	20,24,24	1.04	0

Mol	Type	Chain	Res	Link	Bond lengths			Bond angles		
					Counts	RMSZ	# Z > 2	Counts	RMSZ	# Z > 2
2	BME	A	439	1	3,3,3	0.23	0	1,2,2	0.94	0
10	IPE	B	449	-	15,15,15	0.48	0	14,14,14	0.24	0
8	PEG	A	447	-	6,6,6	0.46	0	5,5,5	0.19	0
2	BME	B	439[A]	-	3,3,3	0.32	0	1,2,2	0.55	0
2	BME	D	439	1	3,3,3	0.41	0	1,2,2	0.56	0
5	GPJ	C	442	-	9,9,9	1.01	0	9,12,12	1.80	2 (22%)
8	PEG	B	448	-	6,6,6	0.41	0	5,5,5	0.22	0
8	PEG	D	445	-	6,6,6	0.46	0	5,5,5	0.16	0
3	PO4	C	441[B]	-	4,4,4	0.92	0	6,6,6	0.53	0
12	PG4	C	450	-	12,12,12	0.53	0	11,11,11	0.24	0
5	GPJ	B	442	-	9,9,9	1.35	1 (11%)	9,12,12	1.81	1 (11%)
6	SKM	A	445[B]	-	12,12,12	2.97	1 (8%)	16,17,17	1.32	2 (12%)
6	SKM	C	443[B]	-	12,12,12	2.71	1 (8%)	16,17,17	1.36	1 (6%)
8	PEG	A	451	-	6,6,6	0.45	0	5,5,5	0.24	0
2	BME	A	440	1	3,3,3	0.47	0	1,2,2	0.14	0
5	GPJ	A	444	-	9,9,9	1.35	1 (11%)	9,12,12	2.07	4 (44%)

In the following table, the Chirals column lists the number of chiral outliers, the number of chiral centers analysed, the number of these observed in the model and the number defined in the Chemical Component Dictionary. Similar counts are reported in the Torsion and Rings columns. '-' means no outliers of that kind were identified.

Mol	Type	Chain	Res	Link	Chirals	Torsions	Rings
8	PEG	D	444	-	-	0/4/4/4	-
7	EDO	A	446	-	-	1/1/1/1	-
8	PEG	C	445	-	-	0/4/4/4	-
8	PEG	D	446	-	-	3/4/4/4	-
12	PG4	C	446	-	-	1/10/10/10	-
8	PEG	A	453	-	-	2/4/4/4	-
7	EDO	C	449	-	-	1/1/1/1	-
8	PEG	A	452	-	-	2/4/4/4	-
7	EDO	C	448	-	-	0/1/1/1	-
8	PEG	A	450	-	-	2/4/4/4	-
2	BME	B	439[B]	-	-	1/1/1/1	-
2	BME	C	439	1	-	0/1/1/1	-
12	PG4	D	447	-	-	3/10/10/10	-
9	PGE	B	447	-	-	4/7/7/7	-
5	GPJ	D	441	-	-	0/7/7/7	-
8	PEG	C	447	-	-	1/4/4/4	-
6	SKM	D	443[B]	-	-	0/4/20/20	0/1/1/1

Continued on next page...

Continued from previous page...

Mol	Type	Chain	Res	Link	Chirals	Torsions	Rings
8	PEG	B	445	-	-	1/4/4/4	-
4	S3P	B	441[A]	-	-	0/9/25/25	0/1/1/1
7	EDO	A	449	-	-	1/1/1/1	-
5	GPJ	B	444	-	-	0/7/7/7	-
8	PEG	A	448	-	-	1/4/4/4	-
4	S3P	D	442[A]	-	-	0/9/25/25	0/1/1/1
6	SKM	B	443[B]	-	-	0/4/20/20	0/1/1/1
4	S3P	A	443[A]	-	-	0/9/25/25	0/1/1/1
8	PEG	B	446	-	-	1/4/4/4	-
4	S3P	C	444[A]	-	-	1/9/25/25	0/1/1/1
2	BME	A	439	1	-	0/1/1/1	-
10	1PE	B	449	-	-	3/13/13/13	-
8	PEG	A	447	-	-	2/4/4/4	-
2	BME	B	439[A]	-	-	0/1/1/1	-
2	BME	D	439	1	-	0/1/1/1	-
5	GPJ	C	442	-	-	0/7/7/7	-
8	PEG	B	448	-	-	2/4/4/4	-
8	PEG	D	445	-	-	2/4/4/4	-
12	PG4	C	450	-	-	3/10/10/10	-
5	GPJ	B	442	-	-	0/7/7/7	-
6	SKM	A	445[B]	-	-	0/4/20/20	0/1/1/1
6	SKM	C	443[B]	-	-	0/4/20/20	0/1/1/1
8	PEG	A	451	-	-	3/4/4/4	-
2	BME	A	440	1	-	1/1/1/1	-
5	GPJ	A	444	-	-	0/7/7/7	-

All (10) bond length outliers are listed below:

Mol	Chain	Res	Type	Atoms	Z	Observed(Å)	Ideal(Å)
6	A	445[B]	SKM	C5-C4	-9.93	1.34	1.51
6	B	443[B]	SKM	C5-C4	-9.76	1.34	1.51
6	D	443[B]	SKM	C5-C4	-9.65	1.34	1.51
6	C	443[B]	SKM	C5-C4	-9.02	1.36	1.51
4	D	442[A]	S3P	P1-O1	3.23	1.65	1.59
4	A	443[A]	S3P	P1-O1	2.84	1.64	1.59
5	B	442	GPJ	P1-O2	-2.77	1.48	1.54
4	B	441[A]	S3P	P1-O1	2.57	1.64	1.59
4	C	444[A]	S3P	P1-O1	2.33	1.63	1.59
5	A	444	GPJ	P1-O3	-2.29	1.49	1.54

All (14) bond angle outliers are listed below:

Mol	Chain	Res	Type	Atoms	Z	Observed(°)	Ideal(°)
5	B	442	GPJ	O2-P1-C1	-4.80	96.38	106.66
6	B	443[B]	SKM	C6-C5-C4	4.61	120.77	111.78
6	D	443[B]	SKM	C6-C5-C4	4.50	120.55	111.78
6	C	443[B]	SKM	C6-C5-C4	4.48	120.51	111.78
5	C	442	GPJ	O2-P1-C1	-4.44	97.15	106.66
6	A	445[B]	SKM	C6-C5-C4	3.82	119.22	111.78
5	A	444	GPJ	O3-P1-C1	-3.49	99.17	106.66
5	A	444	GPJ	O3-P1-O2	3.33	117.80	108.08
5	A	444	GPJ	O2-P1-O1	-2.47	105.85	112.39
5	C	442	GPJ	O3-P1-O2	2.34	114.92	108.08
6	A	445[B]	SKM	O3-C1-C4	-2.27	117.68	121.59
5	D	441	GPJ	O1-P1-C1	-2.25	97.72	108.37
5	A	444	GPJ	O2-P1-C1	2.06	111.06	106.66
4	D	442[A]	S3P	O8-P1-O7	2.01	115.31	107.64

There are no chirality outliers.

All (42) torsion outliers are listed below:

Mol	Chain	Res	Type	Atoms
8	D	445	PEG	O2-C3-C4-O4
8	A	450	PEG	O1-C1-C2-O2
8	A	450	PEG	O2-C3-C4-O4
9	B	447	PGE	O1-C1-C2-O2
10	B	449	1PE	OH7-C16-C26-OH6
8	D	445	PEG	O1-C1-C2-O2
8	D	446	PEG	O2-C3-C4-O4
8	A	447	PEG	O1-C1-C2-O2
8	A	447	PEG	O2-C3-C4-O4
8	B	448	PEG	O1-C1-C2-O2
9	B	447	PGE	O2-C3-C4-O3
7	C	449	EDO	O1-C1-C2-O2
2	A	440	BME	O1-C1-C2-S2
8	A	448	PEG	O2-C3-C4-O4
8	B	445	PEG	O1-C1-C2-O2
8	D	446	PEG	O1-C1-C2-O2
12	D	447	PG4	O4-C7-C8-O5
12	D	447	PG4	O1-C1-C2-O2
2	B	439[B]	BME	O1-C1-C2-S2
8	A	452	PEG	O1-C1-C2-O2
9	B	447	PGE	C1-C2-O2-C3
8	A	452	PEG	C4-C3-O2-C2
8	C	447	PEG	C1-C2-O2-C3
12	C	450	PG4	C6-C5-O3-C4

Continued on next page...

Continued from previous page...

Mol	Chain	Res	Type	Atoms
12	C	450	PG4	C3-C4-O3-C5
10	B	449	1PE	C15-C25-OH5-C14
10	B	449	1PE	C16-C26-OH6-C15
8	A	451	PEG	O2-C3-C4-O4
7	A	449	EDO	O1-C1-C2-O2
8	A	453	PEG	C1-C2-O2-C3
12	D	447	PG4	C1-C2-O2-C3
8	B	446	PEG	C4-C3-O2-C2
8	B	448	PEG	O2-C3-C4-O4
7	A	446	EDO	O1-C1-C2-O2
8	A	451	PEG	O1-C1-C2-O2
8	A	453	PEG	O2-C3-C4-O4
8	A	451	PEG	C4-C3-O2-C2
12	C	446	PG4	O4-C7-C8-O5
8	D	446	PEG	C1-C2-O2-C3
9	B	447	PGE	C6-C5-O3-C4
4	C	444[A]	S3P	C2-C3-O1-P1
12	C	450	PG4	C8-C7-O4-C6

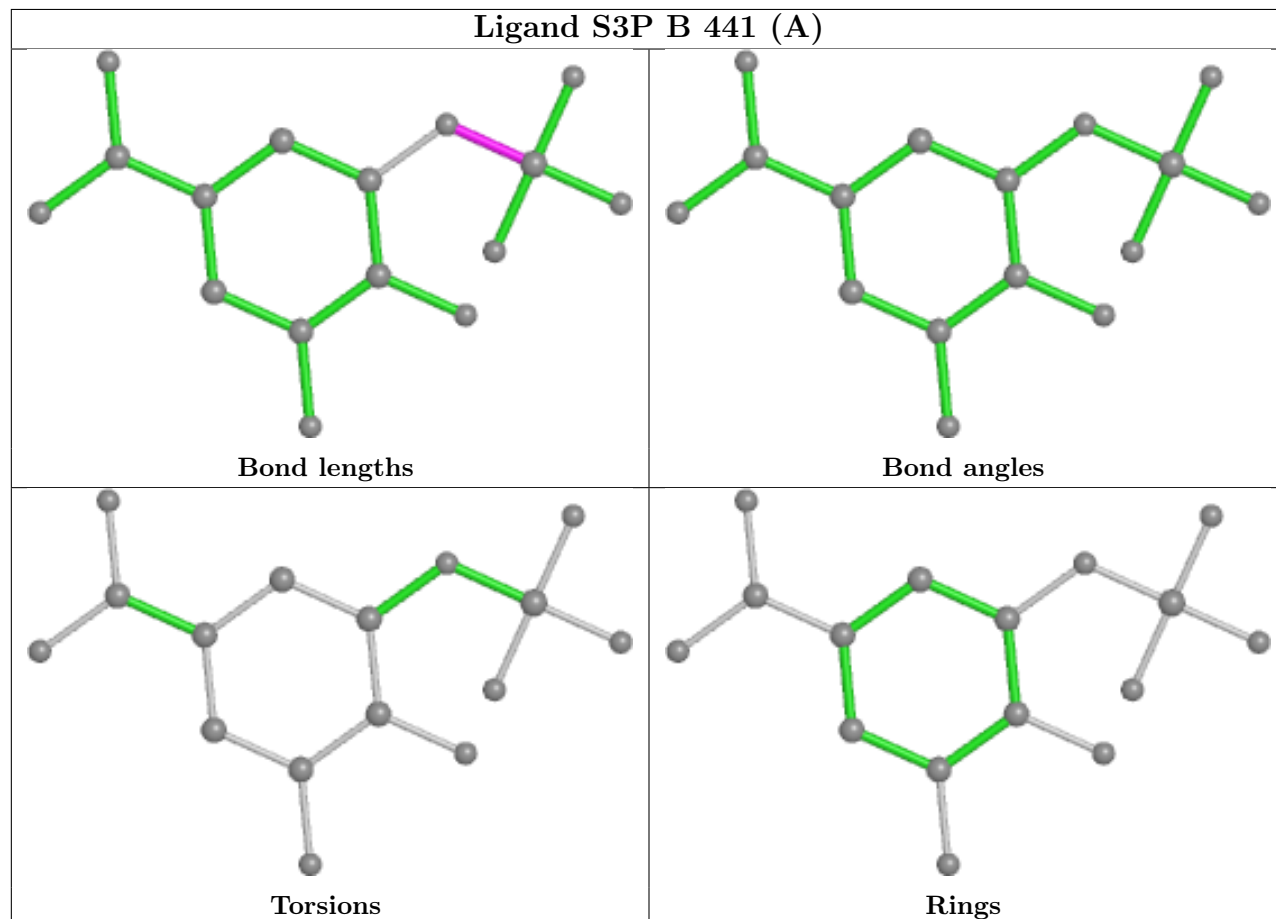
There are no ring outliers.

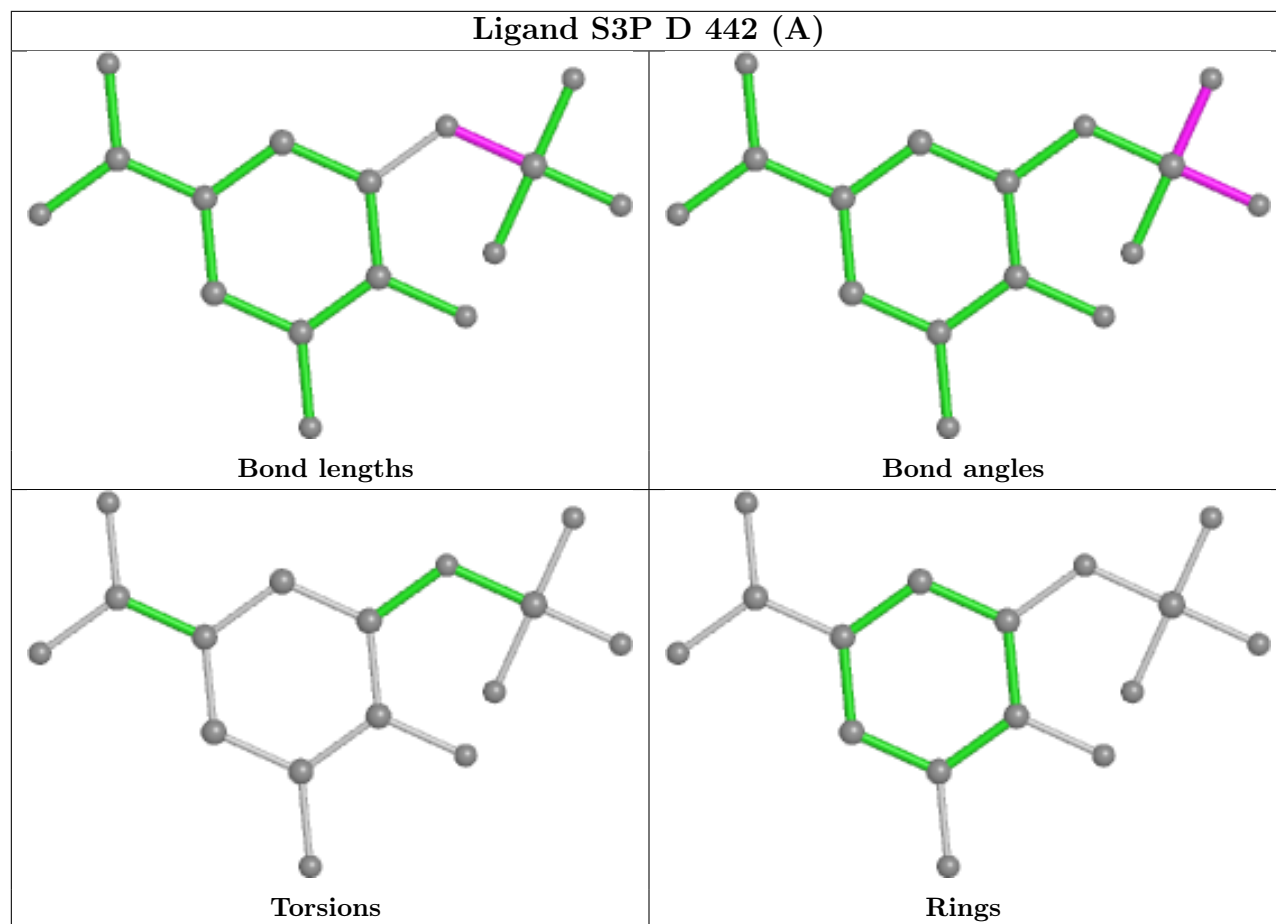
11 monomers are involved in 11 short contacts:

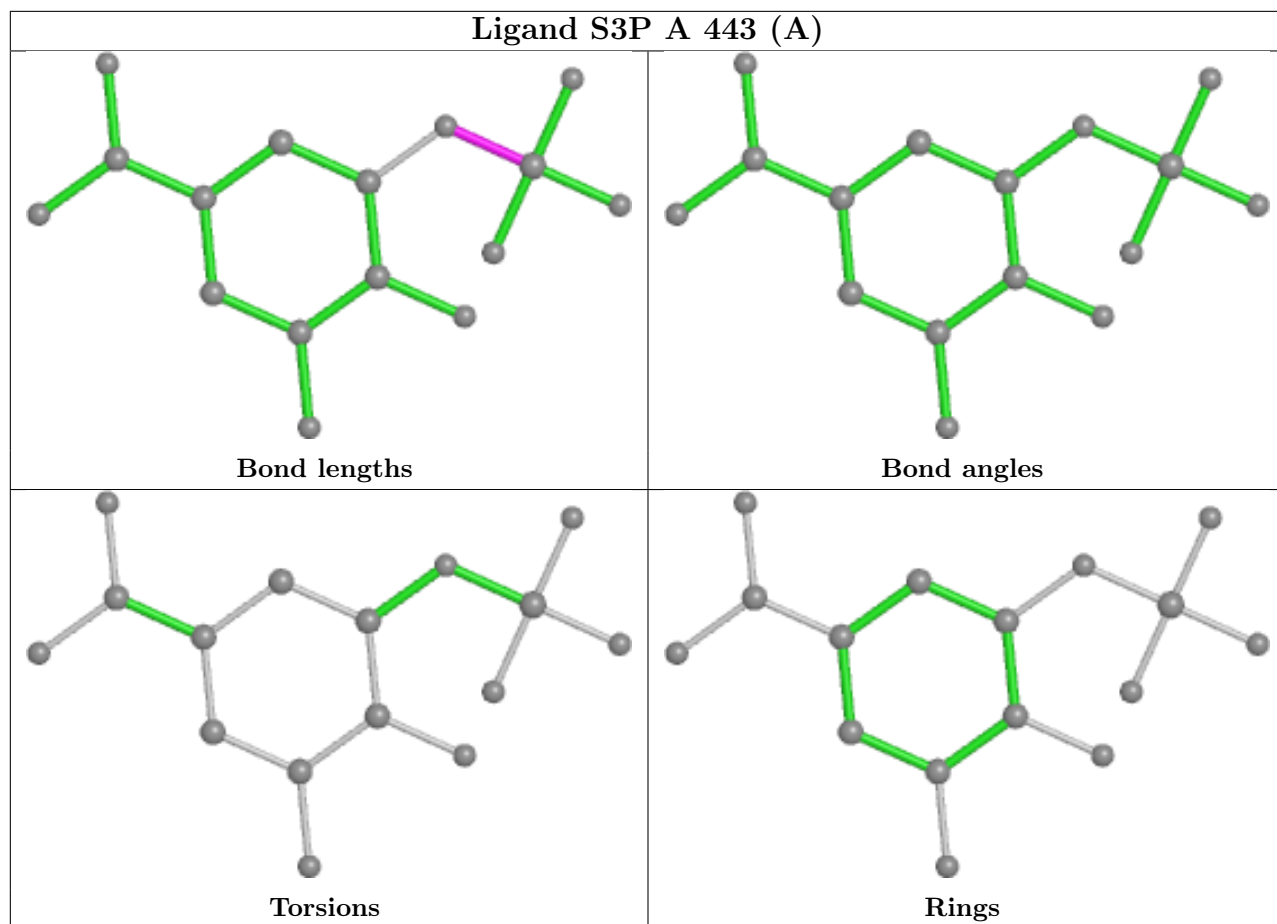
Mol	Chain	Res	Type	Clashes	Symm-Clashes
3	B	440[B]	PO4	3	0
8	D	446	PEG	1	0
12	D	447	PG4	1	0
8	C	447	PEG	1	0
3	A	441[B]	PO4	2	0
7	A	449	EDO	1	0
6	B	443[B]	SKM	3	0
10	B	449	1PE	1	0
3	C	441[B]	PO4	1	0
6	A	445[B]	SKM	2	0
6	C	443[B]	SKM	1	0

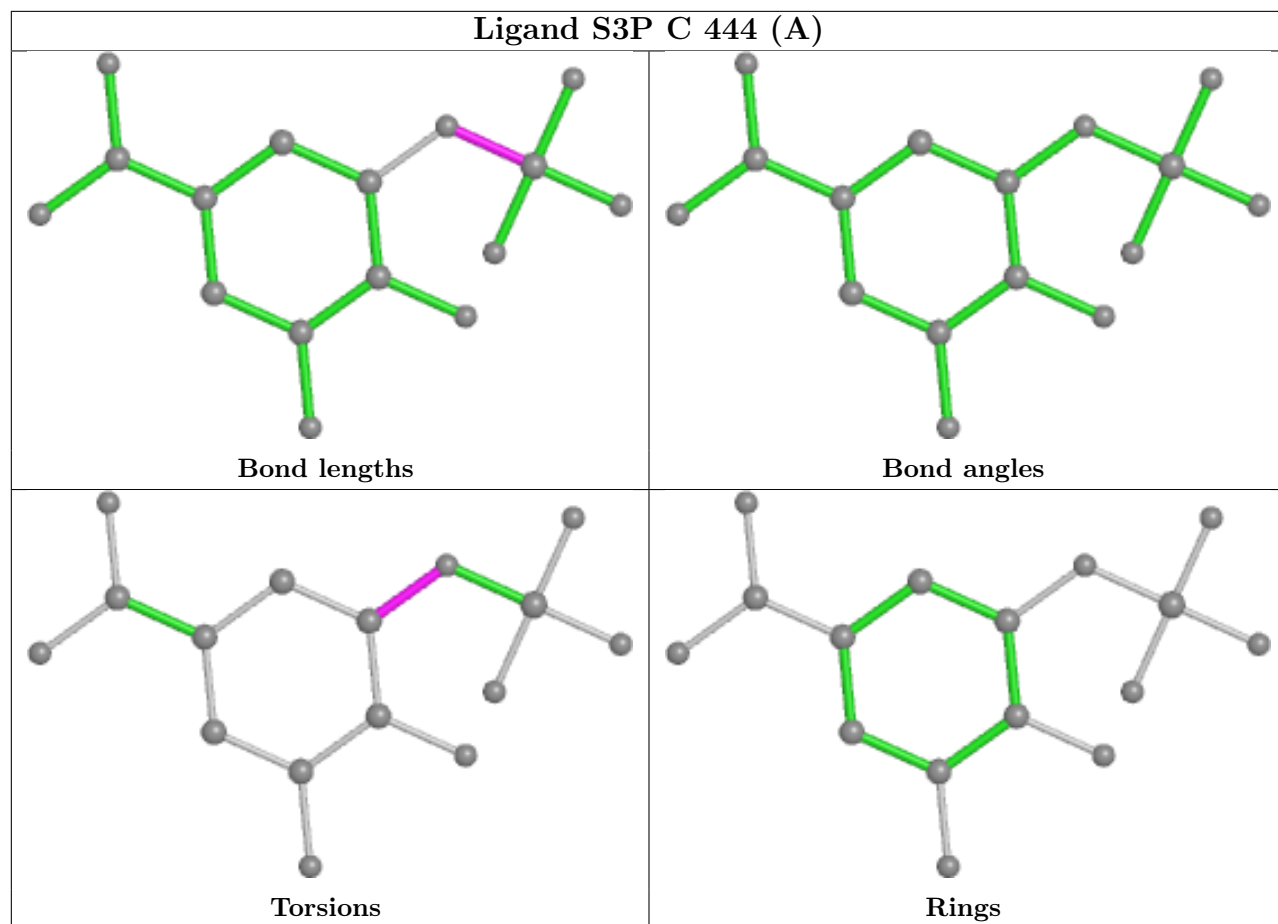
The following is a two-dimensional graphical depiction of Mogul quality analysis of bond lengths, bond angles, torsion angles, and ring geometry for all instances of the Ligand of Interest. In addition, ligands with molecular weight > 250 and outliers as shown on the validation Tables will also be included. For torsion angles, if less than 5% of the Mogul distribution of torsion angles is within 10 degrees of the torsion angle in question, then that torsion angle is considered an outlier. Any bond that is central to one or more torsion angles identified as an outlier by Mogul will be highlighted in the graph. For rings, the root-mean-square deviation (RMSD) between the ring

in question and similar rings identified by Mogul is calculated over all ring torsion angles. If the average RMSD is greater than 60 degrees and the minimal RMSD between the ring in question and any Mogul-identified rings is also greater than 60 degrees, then that ring is considered an outlier. The outliers are highlighted in purple. The color gray indicates Mogul did not find sufficient equivalents in the CSD to analyse the geometry.









5.7 Other polymers [i](#)

There are no such residues in this entry.

5.8 Polymer linkage issues [i](#)

There are no chain breaks in this entry.

6 Fit of model and data [i](#)

6.1 Protein, DNA and RNA chains [i](#)

In the following table, the column labelled ‘#RSRZ > 2’ contains the number (and percentage) of RSRZ outliers, followed by percent RSRZ outliers for the chain as percentile scores relative to all X-ray entries and entries of similar resolution. The OWAB column contains the minimum, median, 95th percentile and maximum values of the occupancy-weighted average B-factor per residue. The column labelled ‘Q < 0.9’ lists the number of (and percentage) of residues with an average occupancy less than 0.9.

Mol	Chain	Analysed	<RSRZ>	#RSRZ>2	OWAB(Å ²)	Q<0.9
1	A	436/441 (98%)	-0.05	9 (2%) 63 67	12, 20, 34, 63	0
1	B	439/441 (99%)	0.02	14 (3%) 47 52	12, 20, 37, 62	1 (0%)
1	C	438/441 (99%)	0.04	13 (2%) 50 54	12, 27, 45, 67	0
1	D	440/441 (99%)	0.24	16 (3%) 42 47	13, 30, 48, 67	0
All	All	1753/1764 (99%)	0.06	52 (2%) 50 54	12, 23, 43, 67	1 (0%)

All (52) RSRZ outliers are listed below:

Mol	Chain	Res	Type	RSRZ
1	B	438	PHE	9.0
1	B	212	LYS	6.2
1	A	212	LYS	5.6
1	D	438	PHE	5.5
1	B	436	GLY	5.5
1	B	213	GLN	5.1
1	D	-1	ASN	4.7
1	C	213	GLN	4.7
1	A	213	GLN	4.6
1	D	155	ARG	4.5
1	D	211	ASP	4.4
1	B	437	GLY	4.1
1	B	211	ASP	4.1
1	B	284	GLU	4.0
1	C	211	ASP	3.9
1	A	211	ASP	3.8
1	B	281	HIS	3.7
1	D	213	GLN	3.6
1	B	283[A]	THR	3.5
1	D	307	PRO	3.4
1	C	285	LYS	3.2

Continued on next page...

Continued from previous page...

Mol	Chain	Res	Type	RSRZ
1	D	212	LYS	3.1
1	D	281	HIS	3.1
1	C	281	HIS	3.0
1	C	-1	ASN	2.9
1	C	436	GLY	2.9
1	B	282	TYR	2.9
1	A	286[A]	ASN	2.8
1	C	142	THR	2.8
1	C	151	TYR	2.7
1	D	282	TYR	2.7
1	C	212	LYS	2.7
1	B	285	LYS	2.7
1	D	283	THR	2.6
1	D	319	VAL	2.6
1	A	435	ARG	2.6
1	C	282[A]	TYR	2.6
1	A	0	ALA	2.6
1	D	68	ASP	2.5
1	D	190	PRO	2.4
1	B	299	ARG	2.3
1	C	68[A]	ASP	2.3
1	D	256	ARG	2.3
1	C	87	GLU	2.2
1	B	142	THR	2.2
1	A	285	LYS	2.1
1	B	286	ASN	2.1
1	D	280	THR	2.1
1	D	286	ASN	2.1
1	A	33	ILE	2.1
1	A	29	LEU	2.0
1	C	208	LEU	2.0

6.2 Non-standard residues in protein, DNA, RNA chains [i](#)

There are no non-standard protein/DNA/RNA residues in this entry.

6.3 Carbohydrates [i](#)

There are no monosaccharides in this entry.

6.4 Ligands i

In the following table, the Atoms column lists the number of modelled atoms in the group and the number defined in the chemical component dictionary. The B-factors column lists the minimum, median, 95th percentile and maximum values of B factors of atoms in the group. The column labelled 'Q< 0.9' lists the number of atoms with occupancy less than 0.9.

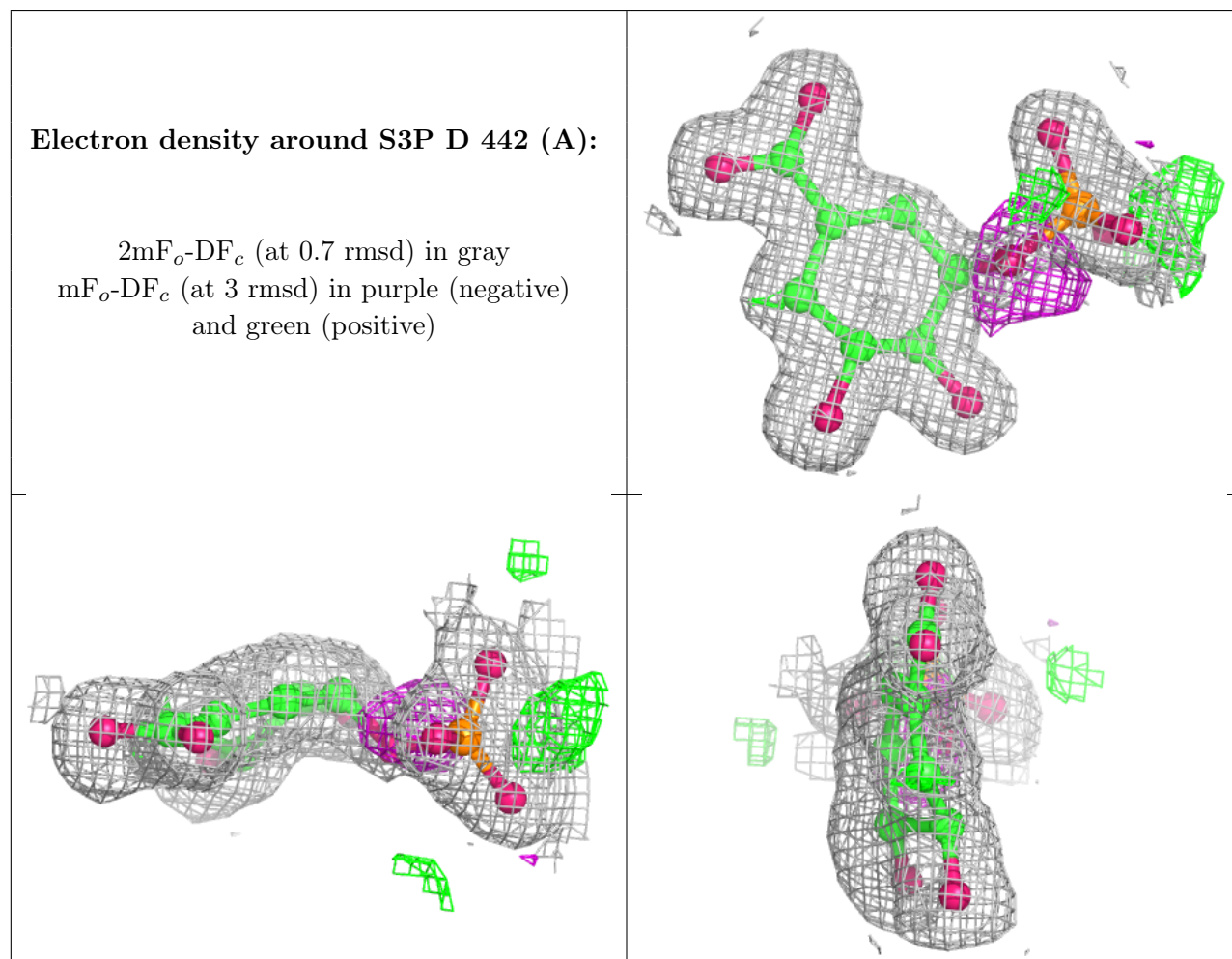
Mol	Type	Chain	Res	Atoms	RSCC	RSR	B-factors(Å ²)	Q<0.9
8	PEG	A	451	7/7	0.69	0.21	39,40,42,43	7
7	EDO	A	449	4/4	0.70	0.17	51,54,55,56	0
12	PG4	C	450	13/13	0.73	0.20	54,56,61,61	0
7	EDO	C	449	4/4	0.76	0.16	51,52,53,55	0
8	PEG	B	446	7/7	0.77	0.21	73,74,74,74	0
12	PG4	D	447	13/13	0.77	0.19	53,55,58,59	0
7	EDO	A	446	4/4	0.80	0.20	44,48,49,49	0
8	PEG	A	450	7/7	0.80	0.22	64,64,65,66	0
8	PEG	B	448	7/7	0.81	0.17	49,49,54,57	0
8	PEG	C	447	7/7	0.81	0.16	44,45,47,49	0
8	PEG	D	444	7/7	0.81	0.19	32,37,39,39	0
8	PEG	A	452	7/7	0.81	0.13	40,41,43,46	0
7	EDO	C	448	4/4	0.81	0.17	59,59,60,60	0
10	1PE	B	449	16/16	0.82	0.16	45,51,59,60	0
8	PEG	B	445	7/7	0.82	0.14	63,63,64,65	0
8	PEG	D	446	7/7	0.82	0.12	55,56,57,59	0
9	PGE	B	447	10/10	0.84	0.17	55,59,62,62	0
8	PEG	A	448	7/7	0.84	0.17	62,63,64,65	0
8	PEG	C	445	7/7	0.85	0.20	46,47,49,50	0
8	PEG	A	447	7/7	0.85	0.13	54,57,58,58	0
2	BME	A	440	4/4	0.86	0.17	46,48,50,50	0
5	GPJ	B	444	10/10	0.86	0.26	32,41,44,48	0
8	PEG	A	453	7/7	0.87	0.24	33,39,40,40	0
8	PEG	D	445	7/7	0.88	0.14	57,58,59,59	0
4	S3P	D	442[A]	16/16	0.89	0.17	26,28,32,33	16
12	PG4	C	446	13/13	0.89	0.17	20,34,51,53	0
6	SKM	C	443[B]	12/12	0.90	0.19	14,16,17,22	12
6	SKM	D	443[B]	12/12	0.91	0.18	15,17,19,20	12
4	S3P	C	444[A]	16/16	0.91	0.14	24,26,34,35	16
6	SKM	B	443[B]	12/12	0.92	0.12	7,9,9,15	12
4	S3P	A	443[A]	16/16	0.92	0.12	17,21,28,29	16
3	PO4	A	442[A]	5/5	0.93	0.15	28,33,36,37	5
6	SKM	A	445[B]	12/12	0.93	0.13	5,7,10,15	12
2	BME	C	439	4/4	0.94	0.34	39,44,46,48	0
4	S3P	B	441[A]	16/16	0.94	0.10	18,20,27,27	16
2	BME	D	439	4/4	0.94	0.34	40,42,42,43	4
2	BME	A	439	4/4	0.94	0.19	38,46,48,53	0

Continued on next page...

Continued from previous page...

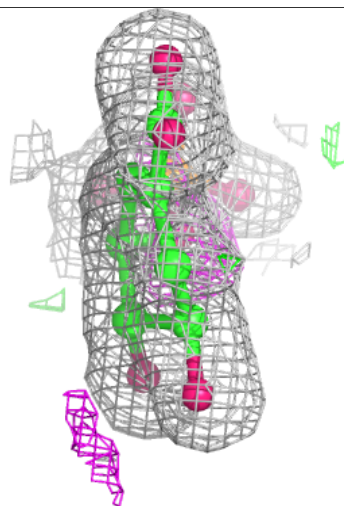
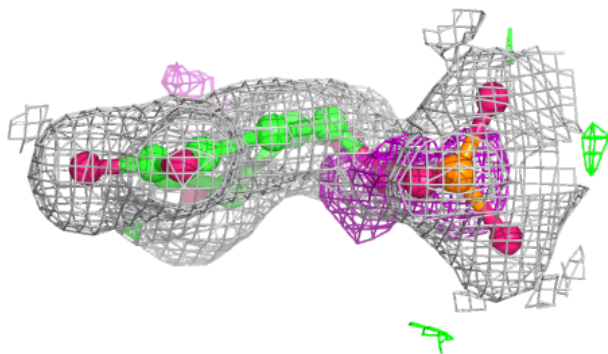
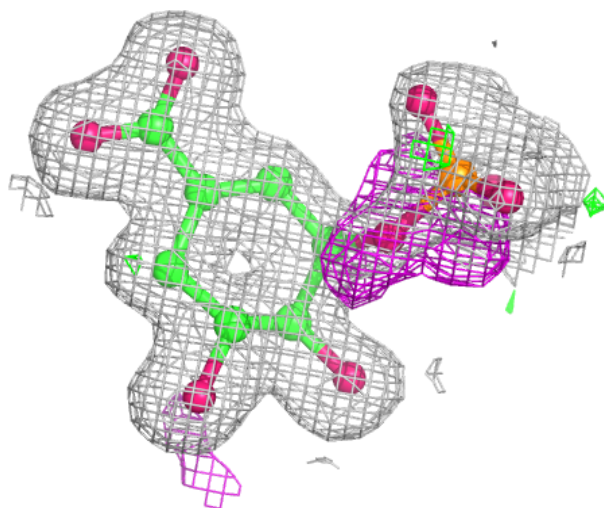
Mol	Type	Chain	Res	Atoms	RSCC	RSR	B-factors(\AA^2)	Q<0.9
2	BME	B	439[B]	4/4	0.95	0.14	27,27,27,28	4
2	BME	B	439[A]	4/4	0.95	0.14	25,26,26,28	4
11	CL	D	440	1/1	0.96	0.12	41,41,41,41	0
11	CL	C	440	1/1	0.96	0.04	39,39,39,39	0
5	GPJ	D	441	10/10	0.97	0.10	22,24,27,28	0
3	PO4	B	440[B]	5/5	0.97	0.09	19,20,23,24	5
3	PO4	A	441[B]	5/5	0.97	0.11	19,21,23,24	5
3	PO4	C	441[B]	5/5	0.98	0.08	28,29,29,30	5
5	GPJ	C	442	10/10	0.98	0.12	21,24,25,28	0
5	GPJ	A	444	10/10	0.98	0.08	15,16,18,18	0
5	GPJ	B	442	10/10	0.98	0.10	15,16,19,20	0

The following is a graphical depiction of the model fit to experimental electron density of all instances of the Ligand of Interest. In addition, ligands with molecular weight > 250 and outliers as shown on the geometry validation Tables will also be included. Each fit is shown from different orientation to approximate a three-dimensional view.



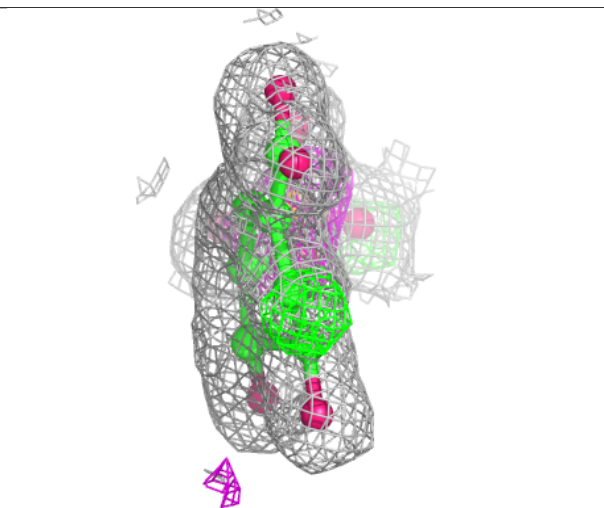
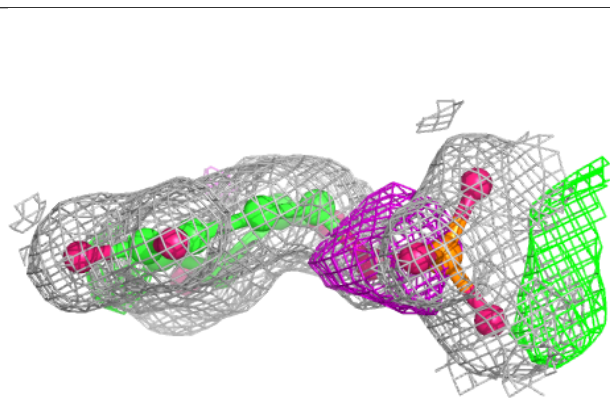
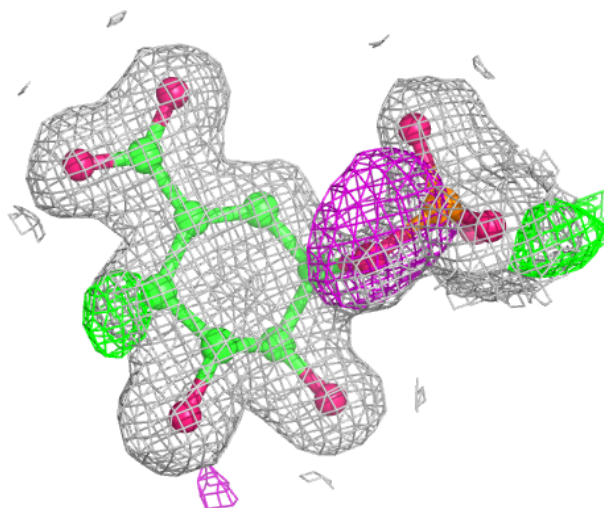
Electron density around S3P C 444 (A):

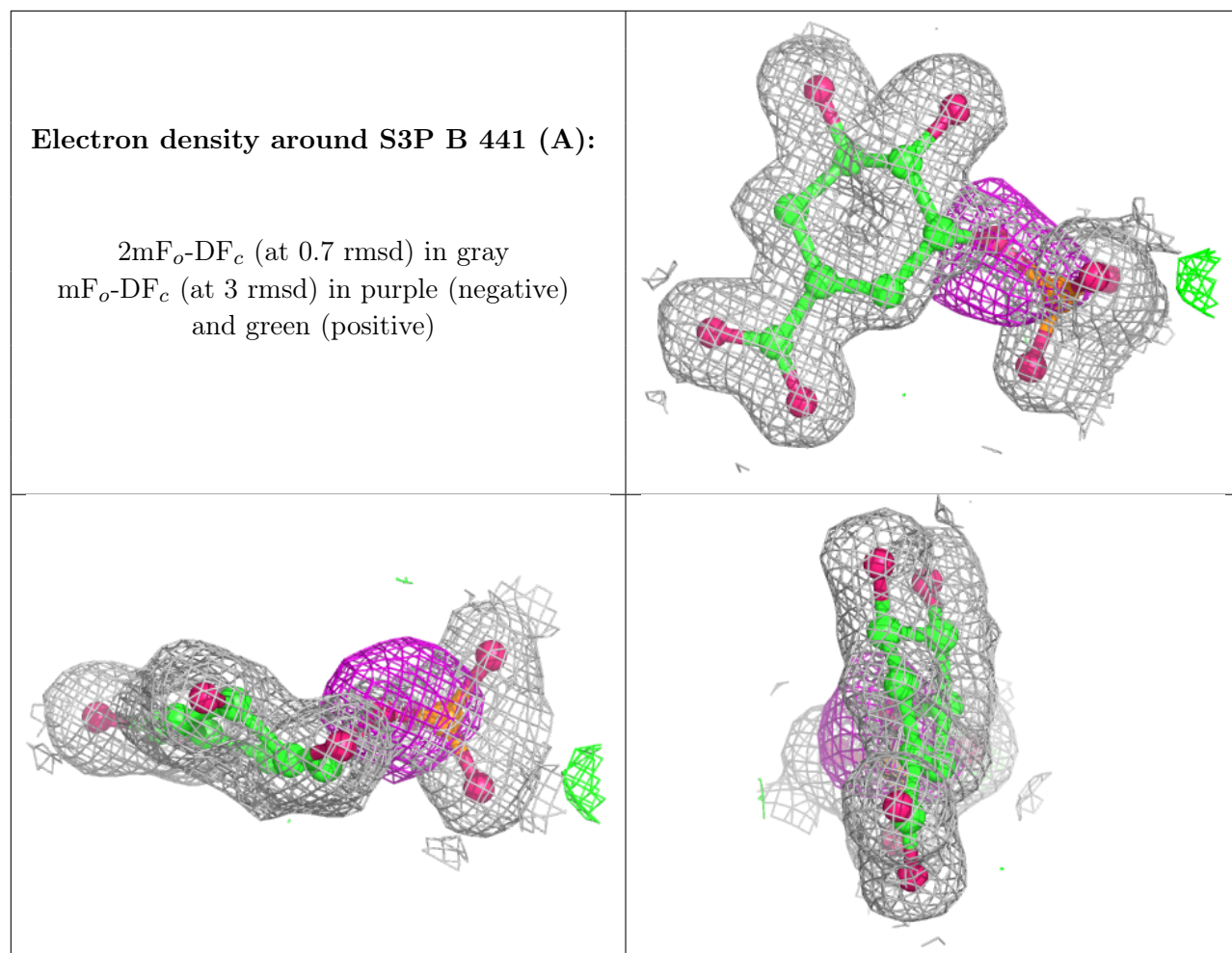
$2mF_o-DF_c$ (at 0.7 rmsd) in gray
 mF_o-DF_c (at 3 rmsd) in purple (negative)
and green (positive)



Electron density around S3P A 443 (A):

$2mF_o-DF_c$ (at 0.7 rmsd) in gray
 mF_o-DF_c (at 3 rmsd) in purple (negative)
and green (positive)





6.5 Other polymers [i](#)

There are no such residues in this entry.