



wwPDB X-ray Structure Validation Summary Report ⓘ

Feb 15, 2024 – 12:10 PM EST

PDB ID : 3Q73
Title : Cryptococcus neoformans protein farnesyltransferase, apo enzyme
Authors : Hast, M.A.; Beese, L.S.
Deposited on : 2011-01-04
Resolution : 2.30 Å(reported)

This is a wwPDB X-ray Structure Validation Summary Report for a publicly released PDB entry.

We welcome your comments at validation@mail.wwpdb.org

A user guide is available at

<https://www.wwpdb.org/validation/2017/XrayValidationReportHelp>

with specific help available everywhere you see the ⓘ symbol.

The types of validation reports are described at

<http://www.wwpdb.org/validation/2017/FAQs#types>.

The following versions of software and data (see [references ⓘ](#)) were used in the production of this report:

MolProbity : 4.02b-467
Mogul : 1.8.5 (274361), CSD as541be (2020)
Xtriage (Phenix) : 1.13
EDS : 2.36
Percentile statistics : 20191225.v01 (using entries in the PDB archive December 25th 2019)
Refmac : 5.8.0158
CCP4 : 7.0.044 (Gargrove)
Ideal geometry (proteins) : Engh & Huber (2001)
Ideal geometry (DNA, RNA) : Parkinson et al. (1996)
Validation Pipeline (wwPDB-VP) : 2.36

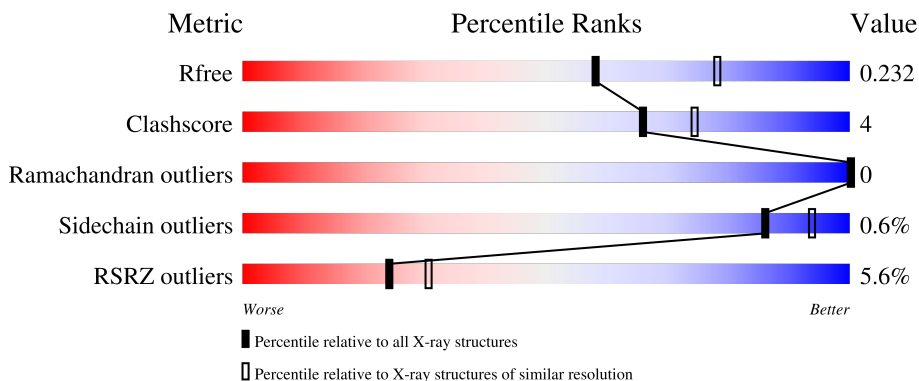
1 Overall quality at a glance

The following experimental techniques were used to determine the structure:

X-RAY DIFFRACTION

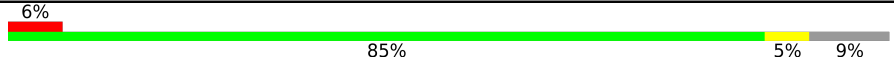
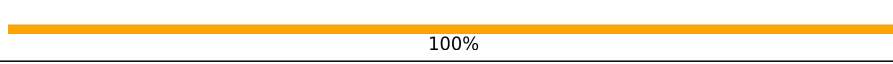
The reported resolution of this entry is 2.30 Å.

Percentile scores (ranging between 0-100) for global validation metrics of the entry are shown in the following graphic. The table shows the number of entries on which the scores are based.



Metric	Whole archive (#Entries)	Similar resolution (#Entries, resolution range(Å))
R_{free}	130704	5042 (2.30-2.30)
Clashscore	141614	5643 (2.30-2.30)
Ramachandran outliers	138981	5575 (2.30-2.30)
Sidechain outliers	138945	5575 (2.30-2.30)
RSRZ outliers	127900	4938 (2.30-2.30)

The table below summarises the geometric issues observed across the polymeric chains and their fit to the electron density. The red, orange, yellow and green segments of the lower bar indicate the fraction of residues that contain outliers for ≥ 3 , 2, 1 and 0 types of geometric quality criteria respectively. A grey segment represents the fraction of residues that are not modelled. The numeric value for each fraction is indicated below the corresponding segment, with a dot representing fractions $\leq 5\%$. The upper red bar (where present) indicates the fraction of residues that have poor fit to the electron density. The numeric value is given above the bar.

Mol	Chain	Length	Quality of chain
1	A	349	 6% 85% 5% 9%
2	B	520	 5% 84% 9% 7%
3	C	2	 100%
3	D	2	 100%
3	E	2	 100%

The following table lists non-polymeric compounds, carbohydrate monomers and non-standard residues in protein, DNA, RNA chains that are outliers for geometric or electron-density-fit criteria:

Mol	Type	Chain	Res	Chirality	Geometry	Clashes	Electron density
3	GLC	C	1	X	-	-	X
3	FRU	C	2	X	-	-	-
3	GLC	D	1	X	-	-	-
3	FRU	D	2	X	-	-	-
3	GLC	E	1	X	-	-	-
3	FRU	E	2	X	-	-	-
5	3CX	B	522	X	-	-	-
5	3CX	B	523	X	-	-	-
5	3CX	B	524	X	-	-	-

2 Entry composition [i](#)

There are 6 unique types of molecules in this entry. The entry contains 7086 atoms, of which 0 are hydrogens and 0 are deuteriums.

In the tables below, the ZeroOcc column contains the number of atoms modelled with zero occupancy, the AltConf column contains the number of residues with at least one atom in alternate conformation and the Trace column contains the number of residues modelled with at most 2 atoms.

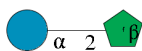
- Molecule 1 is a protein called Farnesyltransferase, alpha subunit.

Mol	Chain	Residues	Atoms					ZeroOcc	AltConf	Trace
			Total	C	N	O	S			
1	A	316	2629	1695	447	476	11	0	0	0

- Molecule 2 is a protein called Farnesyltransferase, beta subunit.

Mol	Chain	Residues	Atoms					ZeroOcc	AltConf	Trace
			Total	C	N	O	S			
2	B	485	3730	2366	649	700	15	0	1	0

- Molecule 3 is an oligosaccharide called beta-D-fructofuranose-(2-1)-alpha-D-glucopyranose.

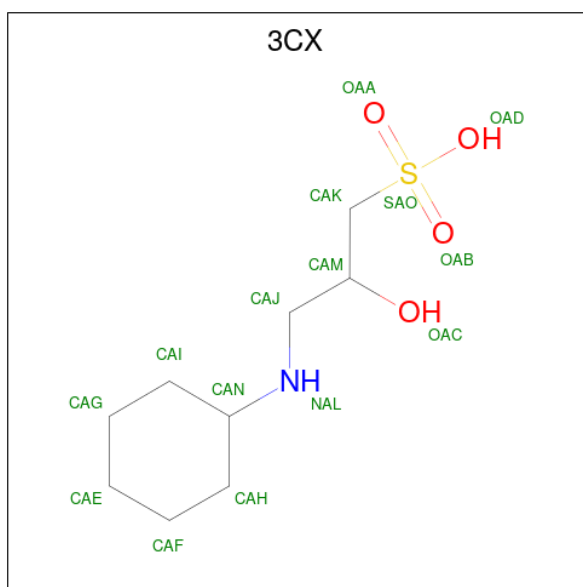


Mol	Chain	Residues	Atoms			ZeroOcc	AltConf	Trace
			Total	C	O			
3	C	2	23	12	11	0	0	0
3	D	2	23	12	11	0	0	0
3	E	2	23	12	11	0	0	0

- Molecule 4 is ZINC ION (three-letter code: ZN) (formula: Zn).

Mol	Chain	Residues	Atoms		ZeroOcc	AltConf
4	B	1	Total	Zn	0	0
			1	1		

- Molecule 5 is (2S)-3-(cyclohexylamino)-2-hydroxypropane-1-sulfonic acid (three-letter code: 3CX) (formula: C₉H₁₉NO₄S).



Mol	Chain	Residues	Atoms					ZeroOcc	AltConf
			Total	C	N	O	S		
5	B	1	15	9	1	4	1	0	0
5	B	1	15	9	1	4	1	0	0
5	B	1	15	9	1	4	1	0	0

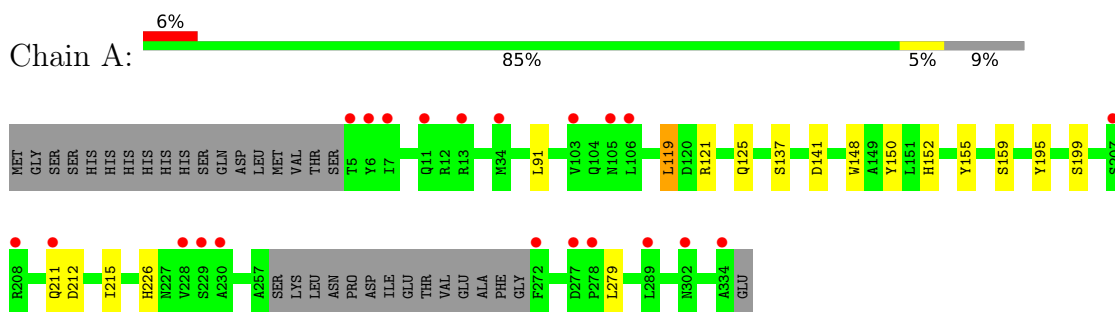
- Molecule 6 is water.

Mol	Chain	Residues	Atoms		ZeroOcc	AltConf
			Total	O		
6	A	224	224	224	0	0
6	B	388	388	388	0	0

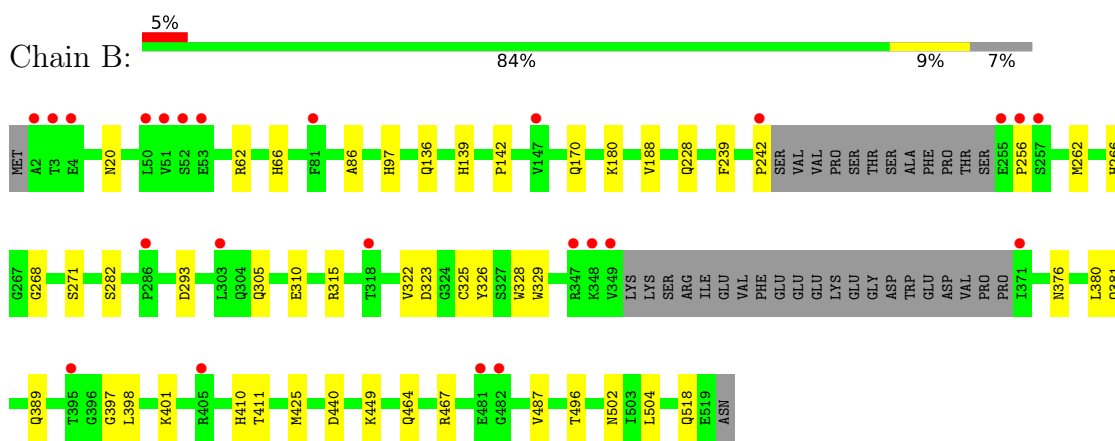
3 Residue-property plots [i](#)

These plots are drawn for all protein, RNA, DNA and oligosaccharide chains in the entry. The first graphic for a chain summarises the proportions of the various outlier classes displayed in the second graphic. The second graphic shows the sequence view annotated by issues in geometry and electron density. Residues are color-coded according to the number of geometric quality criteria for which they contain at least one outlier: green = 0, yellow = 1, orange = 2 and red = 3 or more. A red dot above a residue indicates a poor fit to the electron density ($RSRZ > 2$). Stretches of 2 or more consecutive residues without any outlier are shown as a green connector. Residues present in the sample, but not in the model, are shown in grey.

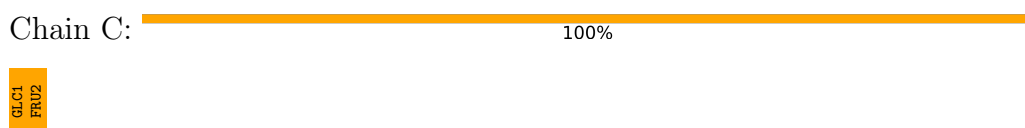
- Molecule 1: Farnesyltransferase, alpha subunit



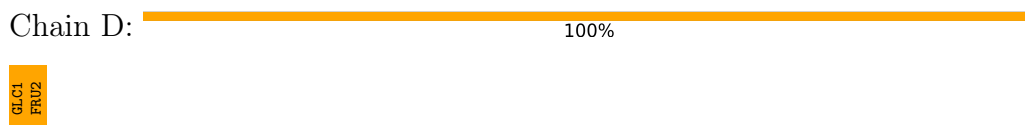
- Molecule 2: Farnesyltransferase, beta subunit



- Molecule 3: beta-D-fructofuranose-(2-1)-alpha-D-glucopyranose



- Molecule 3: beta-D-fructofuranose-(2-1)-alpha-D-glucopyranose



- Molecule 3: beta-D-fructofuranose-(2-1)-alpha-D-glucopyranose

Chain E:

100%

GLC1
FRU2

4 Data and refinement statistics

Property	Value	Source
Space group	P 43 21 2	Depositor
Cell constants a, b, c, α , β , γ	144.04Å 144.04Å 130.44Å 90.00° 90.00° 90.00°	Depositor
Resolution (Å)	33.07 – 2.30 33.07 – 2.30	Depositor EDS
% Data completeness (in resolution range)	96.9 (33.07-2.30) 96.9 (33.07-2.30)	Depositor EDS
R_{merge}	(Not available)	Depositor
R_{sym}	(Not available)	Depositor
$\langle I/\sigma(I) \rangle$ ¹	2.90 (at 2.29Å)	Xtrriage
Refinement program	REFMAC	Depositor
R, R_{free}	0.193 , 0.220 0.203 , 0.232	Depositor DCC
R_{free} test set	2992 reflections (5.01%)	wwPDB-VP
Wilson B-factor (Å ²)	41.7	Xtrriage
Anisotropy	0.058	Xtrriage
Bulk solvent k_{sol} (e/Å ³), B_{sol} (Å ²)	0.35 , 35.8	EDS
L-test for twinning ²	$\langle L \rangle = 0.49$, $\langle L^2 \rangle = 0.33$	Xtrriage
Estimated twinning fraction	No twinning to report.	Xtrriage
F_o, F_c correlation	0.95	EDS
Total number of atoms	7086	wwPDB-VP
Average B, all atoms (Å ²)	45.0	wwPDB-VP

Xtrriage's analysis on translational NCS is as follows: *The largest off-origin peak in the Patterson function is 2.88% of the height of the origin peak. No significant pseudotranslation is detected.*

¹Intensities estimated from amplitudes.

²Theoretical values of $\langle |L| \rangle$, $\langle L^2 \rangle$ for acentric reflections are 0.5, 0.333 respectively for untwinned datasets, and 0.375, 0.2 for perfectly twinned datasets.

5 Model quality [i](#)

5.1 Standard geometry [i](#)

Bond lengths and bond angles in the following residue types are not validated in this section: GLC, ZN, FRU, 3CX

The Z score for a bond length (or angle) is the number of standard deviations the observed value is removed from the expected value. A bond length (or angle) with $|Z| > 5$ is considered an outlier worth inspection. RMSZ is the root-mean-square of all Z scores of the bond lengths (or angles).

Mol	Chain	Bond lengths		Bond angles	
		RMSZ	# Z >5	RMSZ	# Z >5
1	A	0.36	0/2712	0.47	0/3695
2	B	0.38	0/3827	0.51	1/5198 (0.0%)
All	All	0.37	0/6539	0.49	1/8893 (0.0%)

There are no bond length outliers.

All (1) bond angle outliers are listed below:

Mol	Chain	Res	Type	Atoms	Z	Observed(°)	Ideal(°)
2	B	242	PRO	CA-N-CD	-8.42	99.72	111.50

There are no chirality outliers.

There are no planarity outliers.

5.2 Too-close contacts [i](#)

In the following table, the Non-H and H(model) columns list the number of non-hydrogen atoms and hydrogen atoms in the chain respectively. The H(added) column lists the number of hydrogen atoms added and optimized by MolProbity. The Clashes column lists the number of clashes within the asymmetric unit, whereas Symm-Clashes lists symmetry-related clashes.

Mol	Chain	Non-H	H(model)	H(added)	Clashes	Symm-Clashes
1	A	2629	0	2548	13	0
2	B	3730	0	3657	41	0
3	C	23	0	18	0	0
3	D	23	0	16	0	0
3	E	23	0	17	0	0
4	B	1	0	0	0	0
5	B	45	0	49	0	0
6	A	224	0	0	4	0

Continued on next page...

Continued from previous page...

Mol	Chain	Non-H	H(model)	H(added)	Clashes	Symm-Clashes
6	B	388	0	0	7	0
All	All	7086	0	6305	51	0

The all-atom clashscore is defined as the number of clashes found per 1000 atoms (including hydrogen atoms). The all-atom clashscore for this structure is 4.

The worst 5 of 51 close contacts within the same asymmetric unit are listed below, sorted by their clash magnitude.

Atom-1	Atom-2	Interatomic distance (Å)	Clash overlap (Å)
2:B:228:GLN:HE22	2:B:293:ASP:H	1.17	0.91
1:A:137:SER:O	6:A:2653:HOH:O	1.92	0.85
2:B:62:ARG:H	2:B:389:GLN:HE22	1.26	0.84
2:B:170:GLN:HE22	2:B:449:LYS:H	1.27	0.82
2:B:464:GLN:HE22	2:B:467:ARG:HH11	1.29	0.80

There are no symmetry-related clashes.

5.3 Torsion angles [i](#)

5.3.1 Protein backbone [i](#)

In the following table, the Percentiles column shows the percent Ramachandran outliers of the chain as a percentile score with respect to all X-ray entries followed by that with respect to entries of similar resolution.

The Analysed column shows the number of residues for which the backbone conformation was analysed, and the total number of residues.

Mol	Chain	Analysed	Favoured	Allowed	Outliers	Percentiles	
1	A	312/349 (89%)	306 (98%)	6 (2%)	0	100	100
2	B	480/520 (92%)	471 (98%)	9 (2%)	0	100	100
All	All	792/869 (91%)	777 (98%)	15 (2%)	0	100	100

There are no Ramachandran outliers to report.

5.3.2 Protein sidechains [i](#)

In the following table, the Percentiles column shows the percent sidechain outliers of the chain as a percentile score with respect to all X-ray entries followed by that with respect to entries of similar

resolution.

The Analysed column shows the number of residues for which the sidechain conformation was analysed, and the total number of residues.

Mol	Chain	Analysed	Rotameric	Outliers	Percentiles	
1	A	286/316 (90%)	283 (99%)	3 (1%)	76	87
2	B	404/436 (93%)	403 (100%)	1 (0%)	93	97
All	All	690/752 (92%)	686 (99%)	4 (1%)	86	94

All (4) residues with a non-rotameric sidechain are listed below:

Mol	Chain	Res	Type
1	A	119	LEU
1	A	211	GLN
1	A	279	LEU
2	B	282	SER

Sometimes sidechains can be flipped to improve hydrogen bonding and reduce clashes. 5 of 20 such sidechains are listed below:

Mol	Chain	Res	Type
2	B	381	GLN
2	B	464	GLN
2	B	518	GLN
2	B	495	ASN
2	B	136	GLN

5.3.3 RNA [i](#)

There are no RNA molecules in this entry.

5.4 Non-standard residues in protein, DNA, RNA chains [i](#)

There are no non-standard protein/DNA/RNA residues in this entry.

5.5 Carbohydrates [i](#)

6 monosaccharides are modelled in this entry.

In the following table, the Counts columns list the number of bonds (or angles) for which Mogul statistics could be retrieved, the number of bonds (or angles) that are observed in the model and the number of bonds (or angles) that are defined in the Chemical Component Dictionary. The

Link column lists molecule types, if any, to which the group is linked. The Z score for a bond length (or angle) is the number of standard deviations the observed value is removed from the expected value. A bond length (or angle) with $|Z| > 2$ is considered an outlier worth inspection. RMSZ is the root-mean-square of all Z scores of the bond lengths (or angles).

Mol	Type	Chain	Res	Link	Bond lengths			Bond angles		
					Counts	RMSZ	# Z > 2	Counts	RMSZ	# Z > 2
3	GLC	C	1	3	11,11,12	1.46	2 (18%)	15,15,17	3.73	7 (46%)
3	FRU	C	2	3	11,12,12	1.35	0	10,18,18	2.34	3 (30%)
3	GLC	D	1	3	11,11,12	1.38	1 (9%)	15,15,17	3.66	6 (40%)
3	FRU	D	2	3	11,12,12	0.96	0	10,18,18	3.78	6 (60%)
3	GLC	E	1	3	11,11,12	1.18	1 (9%)	15,15,17	3.59	7 (46%)
3	FRU	E	2	3	11,12,12	1.18	1 (9%)	10,18,18	3.39	4 (40%)

In the following table, the Chirals column lists the number of chiral outliers, the number of chiral centers analysed, the number of these observed in the model and the number defined in the Chemical Component Dictionary. Similar counts are reported in the Torsion and Rings columns. '-' means no outliers of that kind were identified.

Mol	Type	Chain	Res	Link	Chirals	Torsions	Rings
3	GLC	C	1	3	2/2/4/5	0/2/19/22	1/1/1/1
3	FRU	C	2	3	2/2/4/4	3/5/24/24	0/1/1/1
3	GLC	D	1	3	2/2/4/5	0/2/19/22	0/1/1/1
3	FRU	D	2	3	3/3/4/4	1/5/24/24	0/1/1/1
3	GLC	E	1	3	3/3/4/5	0/2/19/22	0/1/1/1
3	FRU	E	2	3	2/2/4/4	2/5/24/24	0/1/1/1

All (5) bond length outliers are listed below:

Mol	Chain	Res	Type	Atoms	Z	Observed(Å)	Ideal(Å)
3	C	1	GLC	C2-C3	-3.21	1.47	1.52
3	D	1	GLC	O2-C2	-2.66	1.37	1.43
3	C	1	GLC	O2-C2	-2.46	1.38	1.43
3	E	1	GLC	O2-C2	-2.28	1.38	1.43
3	E	2	FRU	C4-C5	-2.28	1.47	1.53

The worst 5 of 33 bond angle outliers are listed below:

Mol	Chain	Res	Type	Atoms	Z	Observed(°)	Ideal(°)
3	D	1	GLC	C1-C2-C3	8.59	120.23	109.67
3	E	1	GLC	C1-C2-C3	8.28	119.85	109.67

Continued on next page...

Continued from previous page...

Mol	Chain	Res	Type	Atoms	Z	Observed(°)	Ideal(°)
3	D	2	FRU	O4-C4-C5	8.13	134.55	111.05
3	C	1	GLC	O3-C3-C4	7.86	128.51	110.35
3	C	1	GLC	O2-C2-C1	7.74	124.99	109.15

5 of 14 chirality outliers are listed below:

Mol	Chain	Res	Type	Atom
3	C	1	GLC	C3
3	C	1	GLC	C2
3	C	2	FRU	C5
3	C	2	FRU	C4
3	D	1	GLC	C3

5 of 6 torsion outliers are listed below:

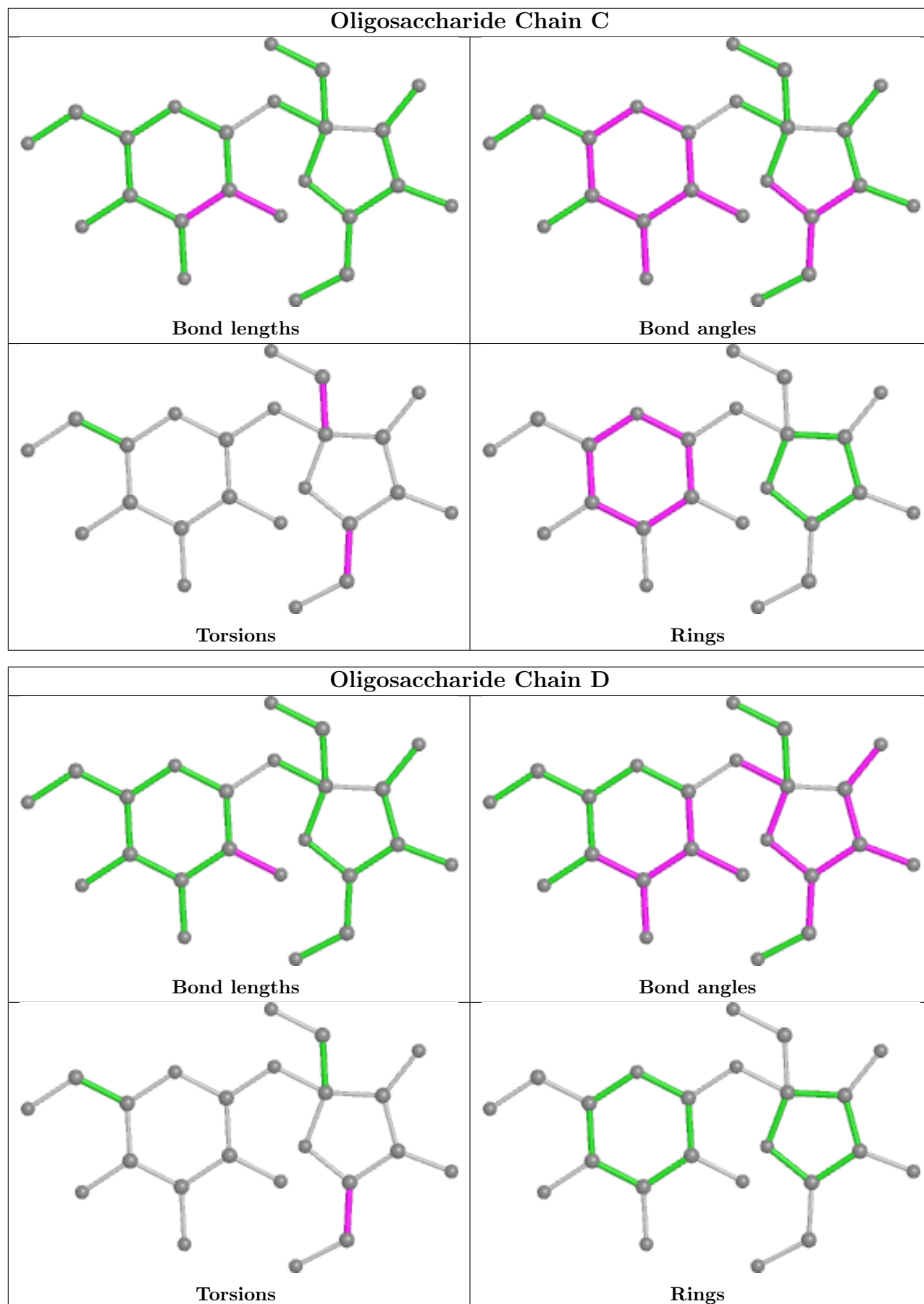
Mol	Chain	Res	Type	Atoms
3	D	2	FRU	C4-C5-C6-O6
3	E	2	FRU	O5-C5-C6-O6
3	C	2	FRU	O5-C5-C6-O6
3	E	2	FRU	C4-C5-C6-O6
3	C	2	FRU	C4-C5-C6-O6

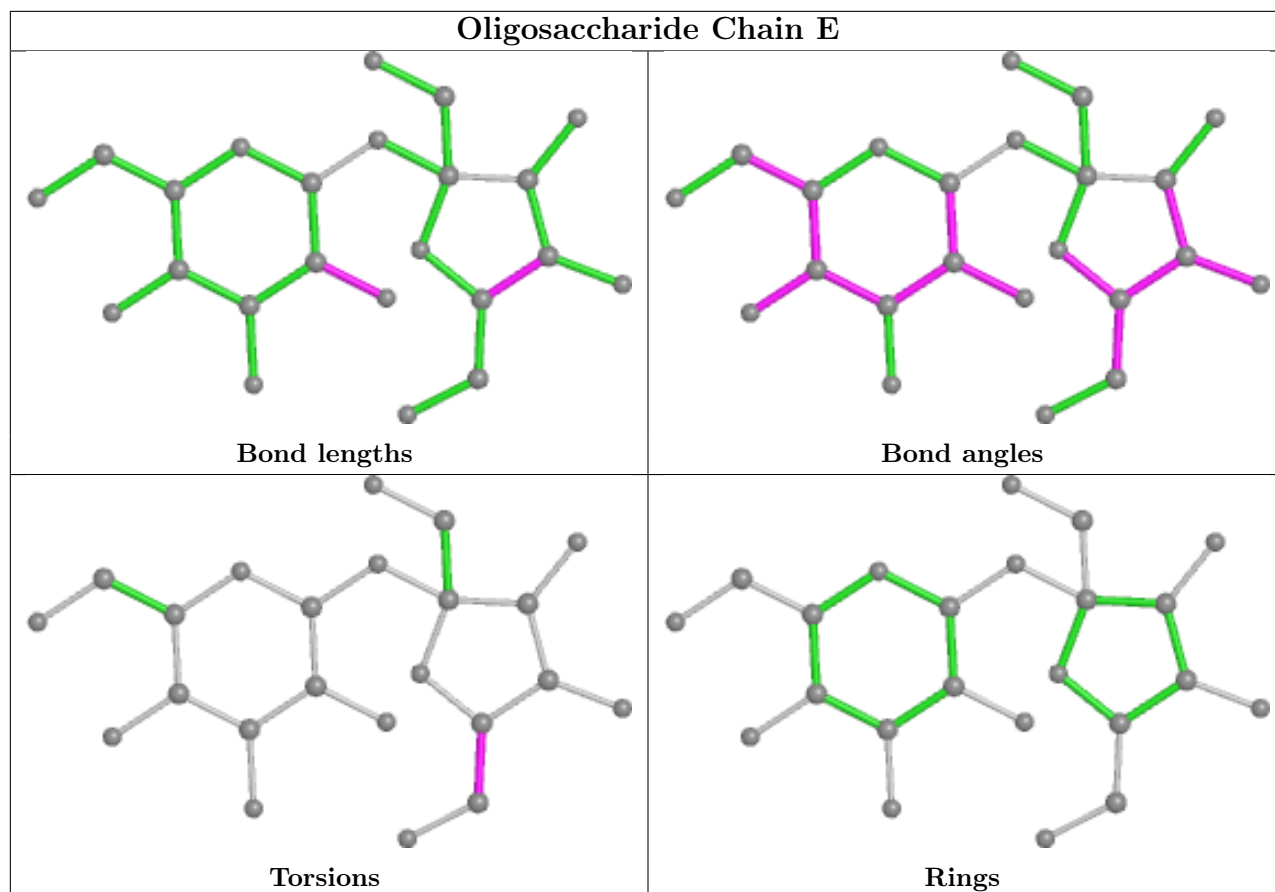
All (1) ring outliers are listed below:

Mol	Chain	Res	Type	Atoms
3	C	1	GLC	C1-C2-C3-C4-C5-O5

No monomer is involved in short contacts.

The following is a two-dimensional graphical depiction of Mogul quality analysis of bond lengths, bond angles, torsion angles, and ring geometry for oligosaccharide.





5.6 Ligand geometry [i](#)

Of 4 ligands modelled in this entry, 1 is monoatomic - leaving 3 for Mogul analysis.

In the following table, the Counts columns list the number of bonds (or angles) for which Mogul statistics could be retrieved, the number of bonds (or angles) that are observed in the model and the number of bonds (or angles) that are defined in the Chemical Component Dictionary. The Link column lists molecule types, if any, to which the group is linked. The Z score for a bond length (or angle) is the number of standard deviations the observed value is removed from the expected value. A bond length (or angle) with $|Z| > 2$ is considered an outlier worth inspection. RMSZ is the root-mean-square of all Z scores of the bond lengths (or angles).

Mol	Type	Chain	Res	Link	Bond lengths			Bond angles		
					Counts	RMSZ	$\# Z > 2$	Counts	RMSZ	$\# Z > 2$
5	3CX	B	522	-	15,15,15	1.95	1 (6%)	16,20,20	1.40	2 (12%)
5	3CX	B	523	-	15,15,15	1.98	1 (6%)	16,20,20	1.46	4 (25%)
5	3CX	B	524	-	15,15,15	1.99	1 (6%)	16,20,20	1.33	2 (12%)

In the following table, the Chirals column lists the number of chiral outliers, the number of chiral centers analysed, the number of these observed in the model and the number defined in the Chemical Component Dictionary. Similar counts are reported in the Torsion and Rings columns.

'-' means no outliers of that kind were identified.

Mol	Type	Chain	Res	Link	Chirals	Torsions	Rings
5	3CX	B	522	-	1/1/3/4	2/10/18/18	0/1/1/1
5	3CX	B	523	-	1/1/3/4	7/10/18/18	0/1/1/1
5	3CX	B	524	-	1/1/3/4	4/10/18/18	0/1/1/1

All (3) bond length outliers are listed below:

Mol	Chain	Res	Type	Atoms	Z	Observed(Å)	Ideal(Å)
5	B	523	3CX	OAC-CAM	-7.09	1.22	1.43
5	B	524	3CX	OAC-CAM	-6.95	1.22	1.43
5	B	522	3CX	OAC-CAM	-6.80	1.23	1.43

The worst 5 of 8 bond angle outliers are listed below:

Mol	Chain	Res	Type	Atoms	Z	Observed(°)	Ideal(°)
5	B	522	3CX	OAC-CAM-CAJ	3.18	120.19	109.32
5	B	524	3CX	OAC-CAM-CAJ	3.00	119.55	109.32
5	B	523	3CX	OAB-SAO-CAK	2.82	110.29	106.94
5	B	524	3CX	OAD-SAO-CAK	2.80	110.21	105.74
5	B	522	3CX	OAA-SAO-CAK	2.77	110.23	106.94

All (3) chirality outliers are listed below:

Mol	Chain	Res	Type	Atom
5	B	522	3CX	CAM
5	B	523	3CX	CAM
5	B	524	3CX	CAM

5 of 13 torsion outliers are listed below:

Mol	Chain	Res	Type	Atoms
5	B	522	3CX	NAL-CAJ-CAM-OAC
5	B	523	3CX	NAL-CAJ-CAM-CAK
5	B	523	3CX	CAM-CAK-SAO-OAA
5	B	523	3CX	CAM-CAK-SAO-OAB
5	B	523	3CX	CAM-CAK-SAO-OAD

There are no ring outliers.

No monomer is involved in short contacts.

5.7 Other polymers [i](#)

There are no such residues in this entry.

5.8 Polymer linkage issues [i](#)

There are no chain breaks in this entry.

6 Fit of model and data [i](#)

6.1 Protein, DNA and RNA chains [i](#)

In the following table, the column labelled ‘#RSRZ> 2’ contains the number (and percentage) of RSRZ outliers, followed by percent RSRZ outliers for the chain as percentile scores relative to all X-ray entries and entries of similar resolution. The OWAB column contains the minimum, median, 95th percentile and maximum values of the occupancy-weighted average B-factor per residue. The column labelled ‘Q< 0.9’ lists the number of (and percentage) of residues with an average occupancy less than 0.9.

Mol	Chain	Analysed	<RSRZ>	#RSRZ>2	OWAB(Å ²)	Q<0.9
1	A	316/349 (90%)	0.18	21 (6%) 18 23	32, 49, 75, 88	0
2	B	485/520 (93%)	0.10	24 (4%) 29 36	28, 41, 60, 86	0
All	All	801/869 (92%)	0.13	45 (5%) 24 30	28, 44, 69, 88	0

The worst 5 of 45 RSRZ outliers are listed below:

Mol	Chain	Res	Type	RSRZ
2	B	349	VAL	9.5
1	A	334	ALA	7.3
1	A	5	THR	6.5
2	B	257	SER	4.8
2	B	348	LYS	4.6

6.2 Non-standard residues in protein, DNA, RNA chains [i](#)

There are no non-standard protein/DNA/RNA residues in this entry.

6.3 Carbohydrates [i](#)

In the following table, the Atoms column lists the number of modelled atoms in the group and the number defined in the chemical component dictionary. The B-factors column lists the minimum, median, 95th percentile and maximum values of B factors of atoms in the group. The column labelled ‘Q< 0.9’ lists the number of atoms with occupancy less than 0.9.

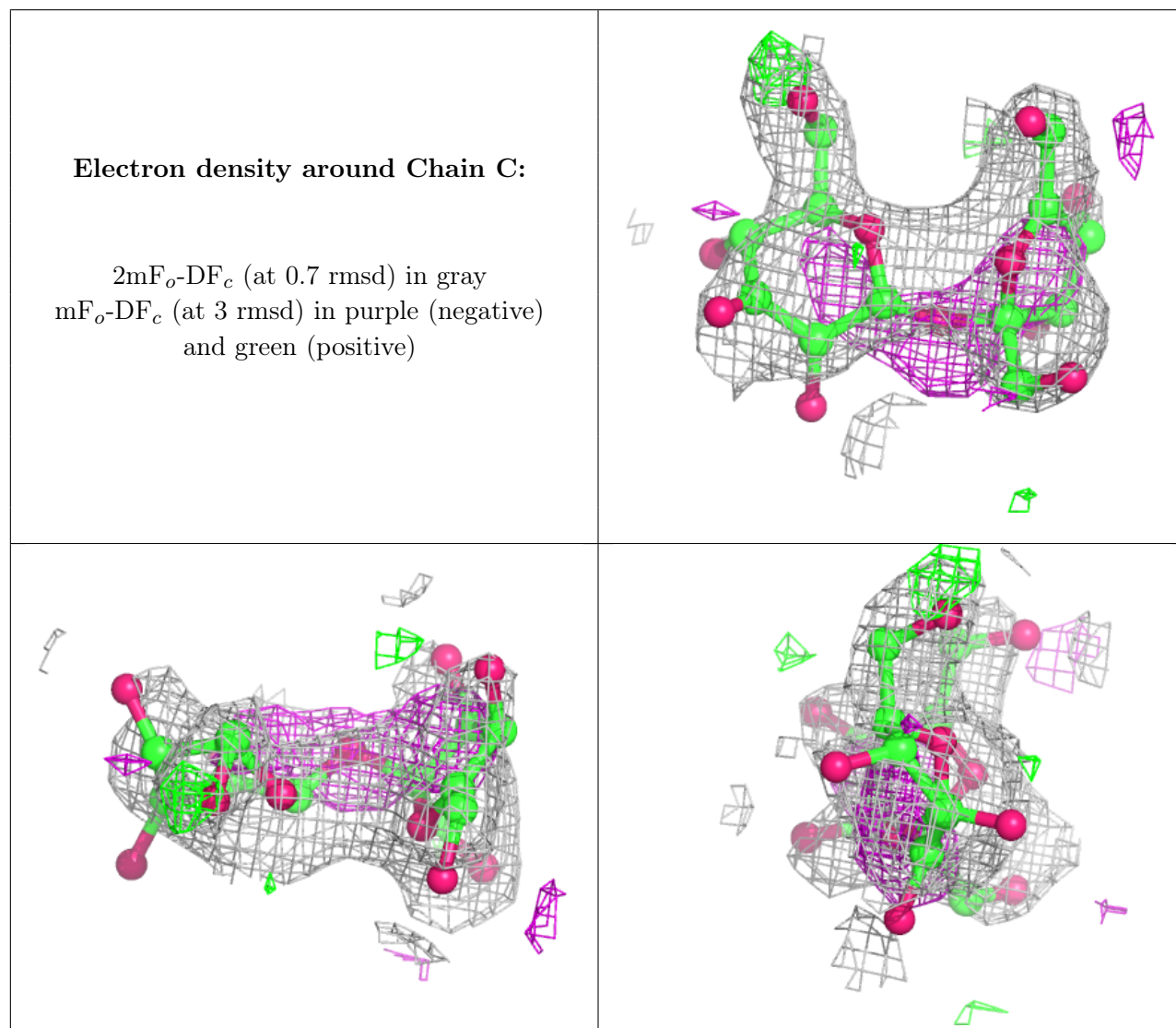
Mol	Type	Chain	Res	Atoms	RSCC	RSR	B-factors(Å ²)	Q<0.9
3	GLC	C	1	11/12	0.59	0.41	101,102,103,103	0
3	FRU	C	2	12/12	0.71	0.40	102,102,102,102	0
3	GLC	E	1	11/12	0.75	0.26	87,87,88,88	0
3	FRU	E	2	12/12	0.79	0.25	87,87,87,88	0
3	FRU	D	2	12/12	0.88	0.15	56,57,58,58	0

Continued on next page...

Continued from previous page...

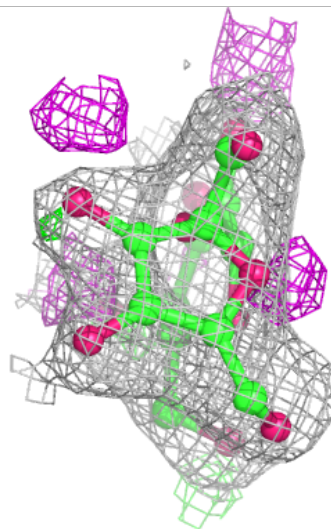
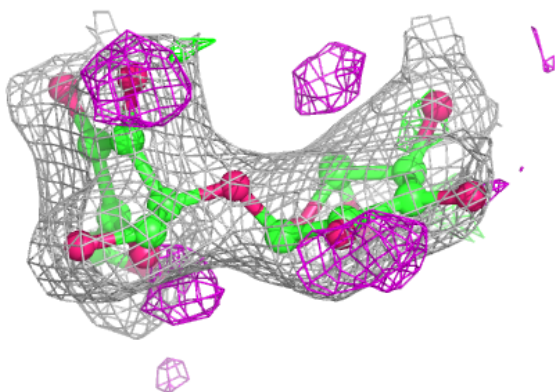
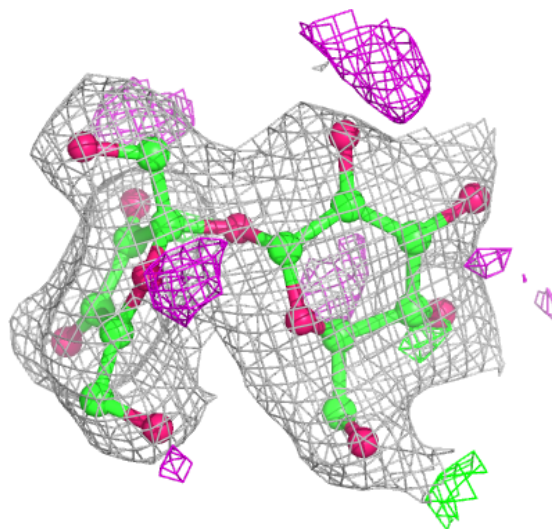
Mol	Type	Chain	Res	Atoms	RSCC	RSR	B-factors(\AA^2)	Q<0.9
3	GLC	D	1	11/12	0.90	0.13	55,57,57,58	0

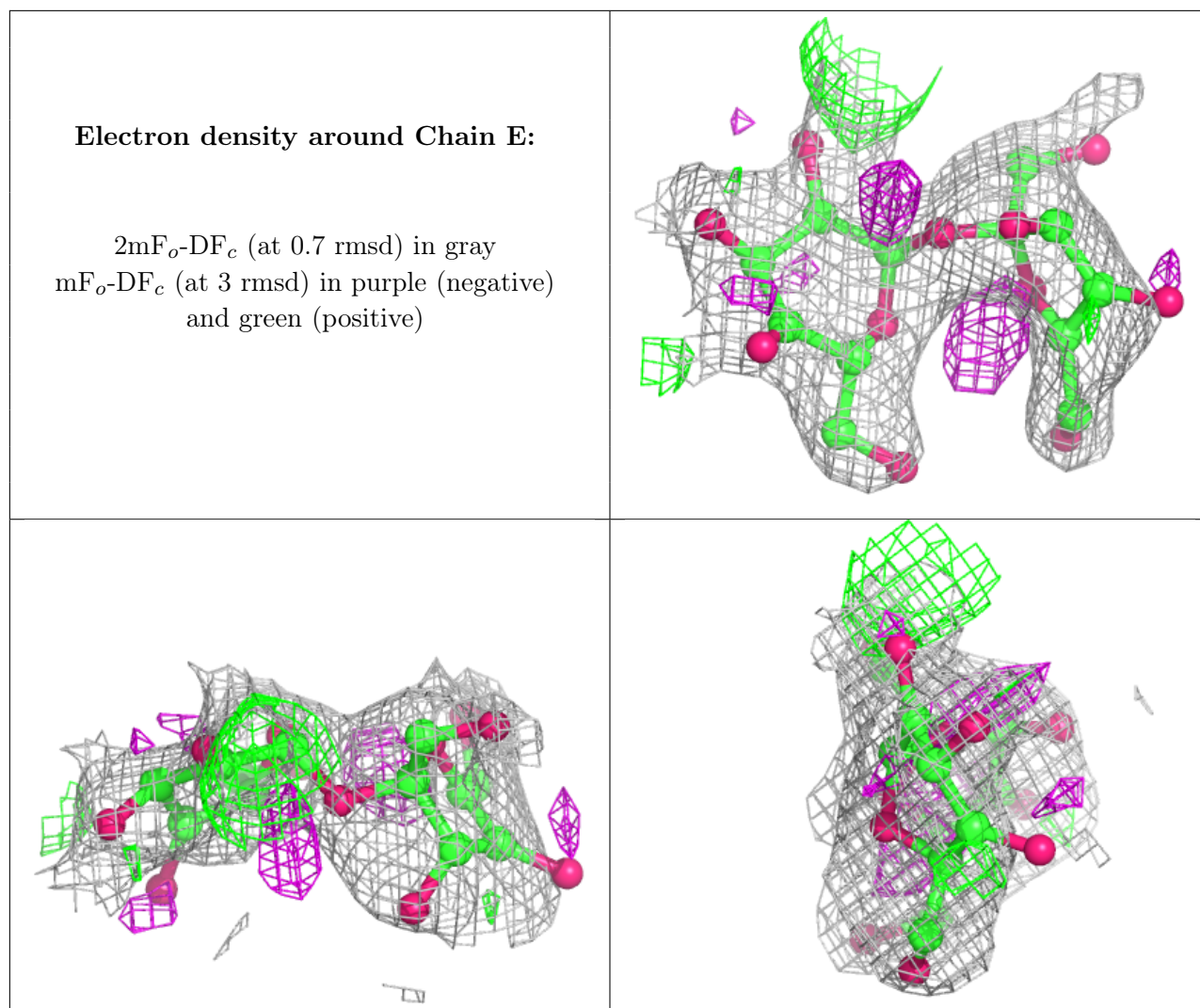
The following is a graphical depiction of the model fit to experimental electron density for oligosaccharide. Each fit is shown from different orientation to approximate a three-dimensional view.



Electron density around Chain D:

$2mF_o-DF_c$ (at 0.7 rmsd) in gray
 mF_o-DF_c (at 3 rmsd) in purple (negative)
and green (positive)





6.4 Ligands [i](#)

In the following table, the Atoms column lists the number of modelled atoms in the group and the number defined in the chemical component dictionary. The B-factors column lists the minimum, median, 95th percentile and maximum values of B factors of atoms in the group. The column labelled 'Q< 0.9' lists the number of atoms with occupancy less than 0.9.

Mol	Type	Chain	Res	Atoms	RSCC	RSR	B-factors(Å ²)	Q<0.9
5	3CX	B	524	15/15	0.76	0.24	78,80,85,86	0
5	3CX	B	523	15/15	0.96	0.14	58,61,61,61	0
5	3CX	B	522	15/15	0.97	0.15	36,37,37,38	0
4	ZN	B	521	1/1	0.99	0.09	38,38,38,38	0

6.5 Other polymers [i](#)

There are no such residues in this entry.