



# Full wwPDB X-ray Structure Validation Report ⓘ

Jun 18, 2024 – 01:33 AM EDT

PDB ID : 3OP1  
Title : Crystal Structure of Macrolide-efflux Protein SP\_1110 from Streptococcus pneumoniae  
Authors : Kim, Y.; Li, H.; Cobb, G.; Joachimiak, A.; Midwest Center for Structural Genomics (MCSG)  
Deposited on : 2010-08-31  
Resolution : 2.49 Å(reported)

This is a Full wwPDB X-ray Structure Validation Report for a publicly released PDB entry.

We welcome your comments at [validation@mail.wwpdb.org](mailto:validation@mail.wwpdb.org)

A user guide is available at

<https://www.wwpdb.org/validation/2017/XrayValidationReportHelp>

with specific help available everywhere you see the ⓘ symbol.

The types of validation reports are described at

<http://www.wwpdb.org/validation/2017/FAQs#types>.

---

The following versions of software and data (see [references ⓘ](#)) were used in the production of this report:

MolProbity : 4.02b-467  
Mogul : 2022.3.0, CSD as543be (2022)  
Xtriage (Phenix) : 1.20.1  
EDS : 2.37.1  
Percentile statistics : 20191225.v01 (using entries in the PDB archive December 25th 2019)  
Refmac : 5.8.0158  
CCP4 : 7.0.044 (Gargrove)  
Ideal geometry (proteins) : Engh & Huber (2001)  
Ideal geometry (DNA, RNA) : Parkinson et al. (1996)  
Validation Pipeline (wwPDB-VP) : 2.37.1

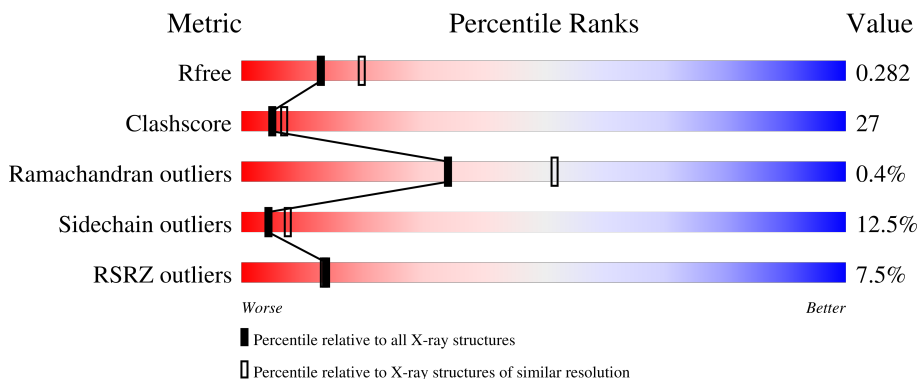
# 1 Overall quality at a glance

The following experimental techniques were used to determine the structure:

*X-RAY DIFFRACTION*

The reported resolution of this entry is 2.49 Å.

Percentile scores (ranging between 0-100) for global validation metrics of the entry are shown in the following graphic. The table shows the number of entries on which the scores are based.



Metric	Whole archive (#Entries)	Similar resolution (#Entries, resolution range(Å))
$R_{free}$	130704	5857 (2.50-2.46)
Clashscore	141614	6594 (2.50-2.46)
Ramachandran outliers	138981	6469 (2.50-2.46)
Sidechain outliers	138945	6471 (2.50-2.46)
RSRZ outliers	127900	5738 (2.50-2.46)

The table below summarises the geometric issues observed across the polymeric chains and their fit to the electron density. The red, orange, yellow and green segments of the lower bar indicate the fraction of residues that contain outliers for  $\geq 3$ , 2, 1 and 0 types of geometric quality criteria respectively. A grey segment represents the fraction of residues that are not modelled. The numeric value for each fraction is indicated below the corresponding segment, with a dot representing fractions  $\leq 5\%$ . The upper red bar (where present) indicates the fraction of residues that have poor fit to the electron density. The numeric value is given above the bar.

Mol	Chain	Length	Quality of chain
1	A	308	
1	B	308	
1	C	308	

The following table lists non-polymeric compounds, carbohydrate monomers and non-standard residues in protein, DNA, RNA chains that are outliers for geometric or electron-density-fit criteria:

Mol	Type	Chain	Res	Chirality	Geometry	Clashes	Electron density
3	GOL	A	315	-	-	X	-
3	GOL	A	317	-	-	X	-
3	GOL	C	315	-	-	-	X
4	PEG	A	319	-	-	X	-
4	PEG	B	314	-	-	X	-
4	PEG	B	317[A]	-	-	-	X
4	PEG	B	317[B]	-	-	-	X
5	ACY	A	316	-	-	X	-

## 2 Entry composition

There are 7 unique types of molecules in this entry. The entry contains 7247 atoms, of which 0 are hydrogens and 0 are deuteriums.

In the tables below, the ZeroOcc column contains the number of atoms modelled with zero occupancy, the AltConf column contains the number of residues with at least one atom in alternate conformation and the Trace column contains the number of residues modelled with at most 2 atoms.

- Molecule 1 is a protein called Macrolide-efflux protein.

Mol	Chain	Residues	Atoms					ZeroOcc	AltConf	Trace
			Total	C	N	O	Se			
1	A	297	2387	1531	399	449	8	0	1	0
1	B	304	2426	1551	411	457	7	0	0	0
1	C	260	2067	1333	346	381	7	0	0	0

There are 9 discrepancies between the modelled and reference sequences:

Chain	Residue	Modelled	Actual	Comment	Reference
A	-2	SER	-	EXPRESSION TAG	UNP Q97QT9
A	-1	ASN	-	EXPRESSION TAG	UNP Q97QT9
A	0	ALA	-	EXPRESSION TAG	UNP Q97QT9
B	-2	SER	-	EXPRESSION TAG	UNP Q97QT9
B	-1	ASN	-	EXPRESSION TAG	UNP Q97QT9
B	0	ALA	-	EXPRESSION TAG	UNP Q97QT9
C	-2	SER	-	EXPRESSION TAG	UNP Q97QT9
C	-1	ASN	-	EXPRESSION TAG	UNP Q97QT9
C	0	ALA	-	EXPRESSION TAG	UNP Q97QT9

- Molecule 2 is SULFATE ION (three-letter code: SO4) (formula: O<sub>4</sub>S).



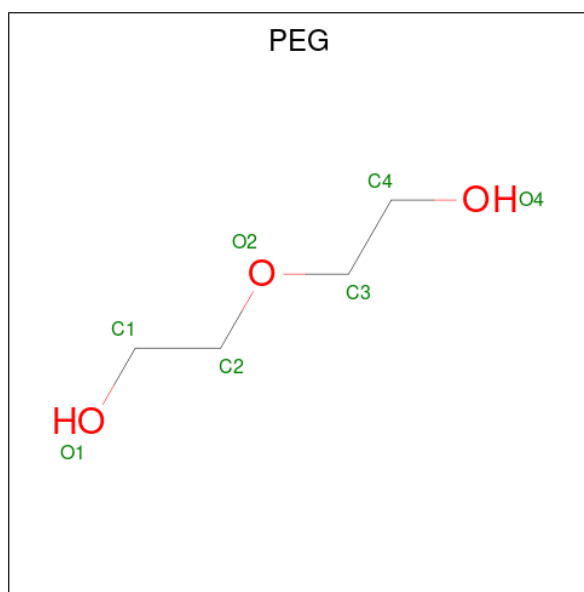
Mol	Chain	Residues	Atoms			ZeroOcc	AltConf
2	A	1	Total	O	S	0	0
			5	4	1		
2	B	1	Total	O	S	0	0
			5	4	1		
2	B	1	Total	O	S	0	0
			5	4	1		
2	C	1	Total	O	S	0	0
			5	4	1		

- Molecule 3 is GLYCEROL (three-letter code: GOL) (formula: C<sub>3</sub>H<sub>8</sub>O<sub>3</sub>).



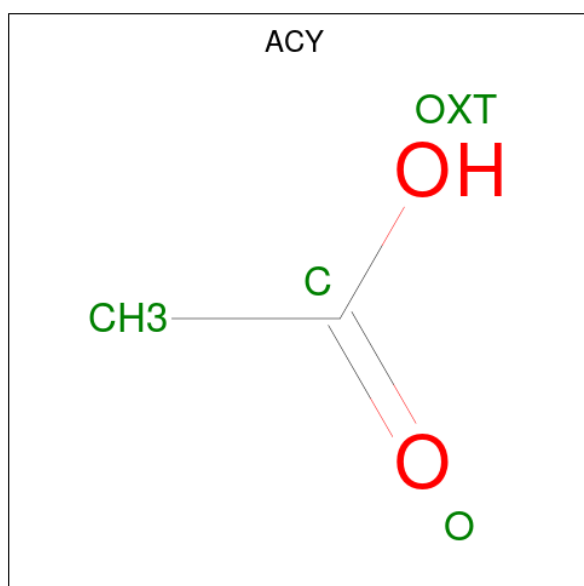
Mol	Chain	Residues	Atoms	ZeroOcc	AltConf
3	A	1	Total C O 6 3 3	0	0
3	A	1	Total C O 6 3 3	0	0
3	A	1	Total C O 6 3 3	0	0
3	A	1	Total C O 6 3 3	0	0
3	B	1	Total C O 6 3 3	0	0
3	B	1	Total C O 6 3 3	0	0
3	B	1	Total C O 6 3 3	0	0
3	C	1	Total C O 6 3 3	0	0
3	C	1	Total C O 6 3 3	0	0
3	C	1	Total C O 6 3 3	0	0
3	C	1	Total C O 6 3 3	0	0
3	C	1	Total C O 6 3 3	0	0

- Molecule 4 is DI(HYDROXYETHYL)ETHER (three-letter code: PEG) (formula: C<sub>4</sub>H<sub>10</sub>O<sub>3</sub>).



Mol	Chain	Residues	Atoms			ZeroOcc	AltConf
4	A	1	Total	C	O	0	0
			7	4	3		
4	A	1	Total	C	O	0	0
			7	4	3		
4	B	1	Total	C	O	0	0
			7	4	3		
4	B	1	Total	C	O	0	1
			14	8	6		

- Molecule 5 is ACETIC ACID (three-letter code: ACY) (formula: C<sub>2</sub>H<sub>4</sub>O<sub>2</sub>).



Mol	Chain	Residues	Atoms			ZeroOcc	AltConf
5	A	1	Total	C	O	0	0
			4	2	2		

- Molecule 6 is CHLORIDE ION (three-letter code: CL) (formula: Cl).

Mol	Chain	Residues	Atoms		ZeroOcc	AltConf
6	B	1	Total	Cl	0	0
			1	1		

- Molecule 7 is water.

Mol	Chain	Residues	Atoms		ZeroOcc	AltConf
7	A	81	Total	O	0	0
			81	81		

*Continued on next page...*

*Continued from previous page...*

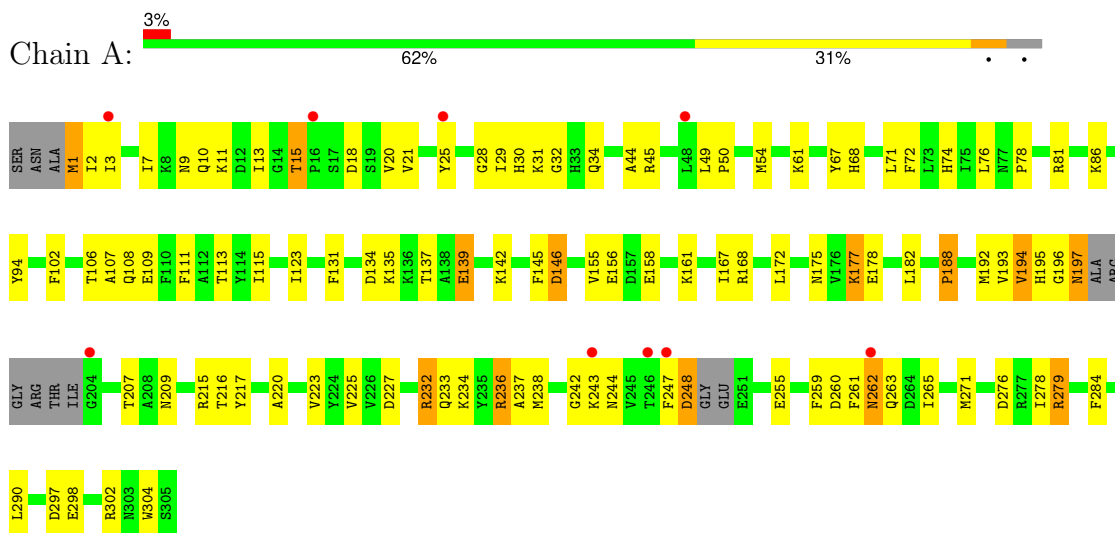
<b>Mol</b>	<b>Chain</b>	<b>Residues</b>	<b>Atoms</b>	<b>ZeroOcc</b>	<b>AltConf</b>
7	B	95	Total O 95 95	0	0
7	C	59	Total O 59 59	0	0



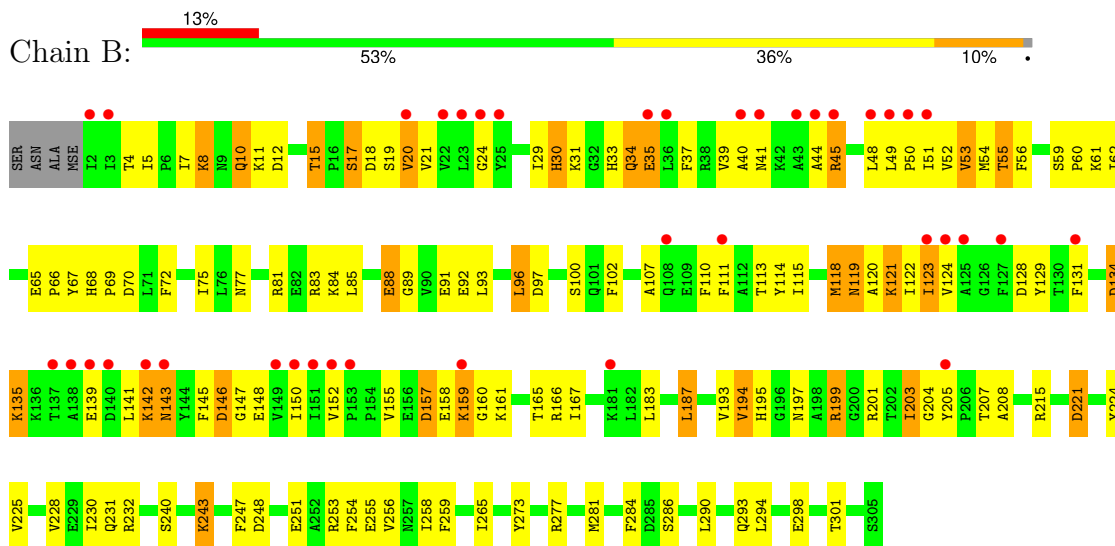
### 3 Residue-property plots [i](#)

These plots are drawn for all protein, RNA, DNA and oligosaccharide chains in the entry. The first graphic for a chain summarises the proportions of the various outlier classes displayed in the second graphic. The second graphic shows the sequence view annotated by issues in geometry and electron density. Residues are color-coded according to the number of geometric quality criteria for which they contain at least one outlier: green = 0, yellow = 1, orange = 2 and red = 3 or more. A red dot above a residue indicates a poor fit to the electron density ( $RSRZ > 2$ ). Stretches of 2 or more consecutive residues without any outlier are shown as a green connector. Residues present in the sample, but not in the model, are shown in grey.

- Molecule 1: Macrolide-efflux protein

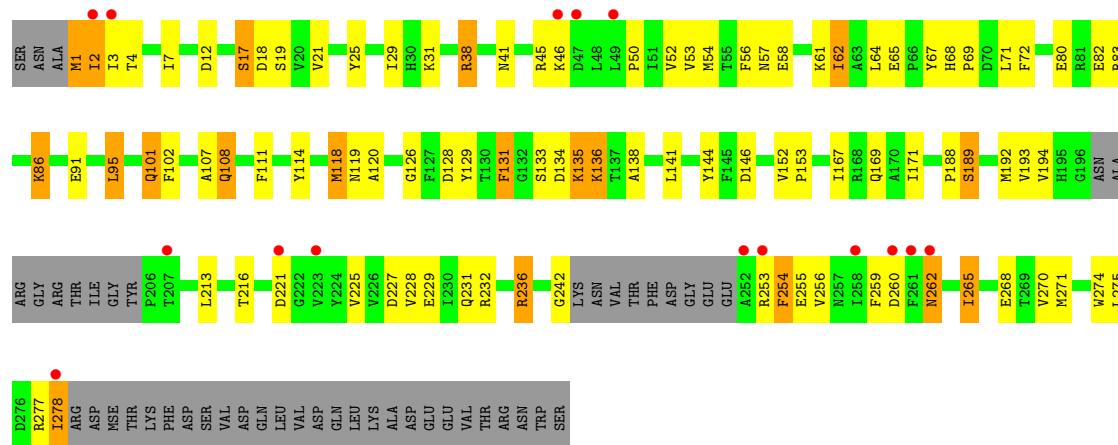


- Molecule 1: Macrolide-efflux protein



- Molecule 1: Macrolide-efflux protein





## 4 Data and refinement statistics

Property	Value	Source
Space group	C 1 2 1	Depositor
Cell constants a, b, c, $\alpha$ , $\beta$ , $\gamma$	180.15Å 73.25Å 87.52Å 90.00° 112.48° 90.00°	Depositor
Resolution (Å)	35.76 – 2.49 35.76 – 2.49	Depositor EDS
% Data completeness (in resolution range)	97.9 (35.76-2.49) 97.9 (35.76-2.49)	Depositor EDS
$R_{merge}$	(Not available)	Depositor
$R_{sym}$	0.09	Depositor
$\langle I/\sigma(I) \rangle$ <sup>1</sup>	2.66 (at 2.48Å)	Xtrriage
Refinement program	PHENIX (phenix.refine: 1.6.2_432), REFMAC 5.5	Depositor
R, $R_{free}$	0.198 , 0.265 0.219 , 0.282	Depositor DCC
$R_{free}$ test set	1817 reflections (4.99%)	wwPDB-VP
Wilson B-factor (Å <sup>2</sup> )	46.6	Xtrriage
Anisotropy	0.438	Xtrriage
Bulk solvent $k_{sol}$ (e/Å <sup>3</sup> ), $B_{sol}$ (Å <sup>2</sup> )	0.34 , 59.2	EDS
L-test for twinning <sup>2</sup>	$\langle  L  \rangle = 0.49$ , $\langle L^2 \rangle = 0.32$	Xtrriage
Estimated twinning fraction	No twinning to report.	Xtrriage
$F_o, F_c$ correlation	0.94	EDS
Total number of atoms	7247	wwPDB-VP
Average B, all atoms (Å <sup>2</sup> )	59.0	wwPDB-VP

Xtrriage's analysis on translational NCS is as follows: *The largest off-origin peak in the Patterson function is 4.92% of the height of the origin peak. No significant pseudotranslation is detected.*

<sup>1</sup>Intensities estimated from amplitudes.

<sup>2</sup>Theoretical values of  $\langle |L| \rangle$ ,  $\langle L^2 \rangle$  for acentric reflections are 0.5, 0.333 respectively for untwinned datasets, and 0.375, 0.2 for perfectly twinned datasets.

## 5 Model quality [i](#)

### 5.1 Standard geometry [i](#)

Bond lengths and bond angles in the following residue types are not validated in this section: CL, SO4, PEG, ACY, GOL

The Z score for a bond length (or angle) is the number of standard deviations the observed value is removed from the expected value. A bond length (or angle) with  $|Z| > 5$  is considered an outlier worth inspection. RMSZ is the root-mean-square of all Z scores of the bond lengths (or angles).

Mol	Chain	Bond lengths		Bond angles	
		RMSZ	# Z  >5	RMSZ	# Z  >5
1	A	0.66	0/2428	0.73	1/3271 (0.0%)
1	B	0.62	0/2468	0.69	0/3327
1	C	0.60	0/2103	0.70	0/2832
All	All	0.63	0/6999	0.71	1/9430 (0.0%)

There are no bond length outliers.

All (1) bond angle outliers are listed below:

Mol	Chain	Res	Type	Atoms	Z	Observed(°)	Ideal(°)
1	A	236	ARG	CG-CD-NE	-5.06	101.17	111.80

There are no chirality outliers.

There are no planarity outliers.

### 5.2 Too-close contacts [i](#)

In the following table, the Non-H and H(model) columns list the number of non-hydrogen atoms and hydrogen atoms in the chain respectively. The H(added) column lists the number of hydrogen atoms added and optimized by MolProbity. The Clashes column lists the number of clashes within the asymmetric unit, whereas Symm-Clashes lists symmetry-related clashes.

Mol	Chain	Non-H	H(model)	H(added)	Clashes	Symm-Clashes
1	A	2387	0	2380	110	0
1	B	2426	0	2423	177	0
1	C	2067	0	2089	100	0
2	A	5	0	0	0	0
2	B	10	0	0	0	0
2	C	5	0	0	1	0
3	A	24	0	32	15	0

*Continued on next page...*

*Continued from previous page...*

Mol	Chain	Non-H	H(model)	H(added)	Clashes	Symm-Clashes
3	B	18	0	24	3	0
3	C	30	0	40	2	0
4	A	14	0	20	6	0
4	B	21	0	30	9	0
5	A	4	0	3	2	0
6	B	1	0	0	0	0
7	A	81	0	0	4	0
7	B	95	0	0	10	0
7	C	59	0	0	8	0
All	All	7247	0	7041	379	0

The all-atom clashscore is defined as the number of clashes found per 1000 atoms (including hydrogen atoms). The all-atom clashscore for this structure is 27.

All (379) close contacts within the same asymmetric unit are listed below, sorted by their clash magnitude.

Atom-1	Atom-2	Interatomic distance (Å)	Clash overlap (Å)
1:B:31:LYS:HA	1:B:34:GLN:OE1	1.42	1.15
1:A:192:MSE:HE3	1:B:62:ILE:HG21	1.17	1.11
1:A:197:ASN:C	1:A:197:ASN:HD22	1.53	1.06
1:A:260:ASP:HA	3:A:315:GOL:H31	1.32	1.05
1:A:194:VAL:HG13	1:B:67:TYR:HB2	1.35	1.04
1:A:15:THR:HG22	1:A:94:TYR:OH	1.58	1.04
1:B:49:LEU:HD11	1:B:121:LYS:HE3	1.35	1.03
1:B:134:ASP:O	1:B:135:LYS:HB3	1.58	1.00
1:A:106:THR:HG23	1:A:108:GLN:H	1.29	0.97
1:C:21:VAL:CG2	1:C:120:ALA:HB2	1.95	0.95
1:B:4:THR:O	1:B:5:ILE:HD13	1.68	0.92
1:A:192:MSE:CE	1:B:62:ILE:HG21	2.02	0.88
1:B:34:GLN:HG3	1:B:88:GLU:OE2	1.72	0.88
1:B:118:MSE:O	1:B:119:ASN:HB2	1.73	0.88
1:C:136:LYS:HD2	1:C:144:TYR:OH	1.75	0.86
1:B:18:ASP:HB3	1:B:121:LYS:CG	2.04	0.86
1:B:10:GLN:HG2	1:B:113:THR:HB	1.58	0.85
1:B:33:HIS:O	1:B:37:PHE:CD2	2.30	0.85
1:A:215:ARG:HD3	4:A:319:PEG:H22	1.55	0.85
1:A:192:MSE:HE3	1:B:62:ILE:CG2	2.06	0.84
1:B:155:VAL:HG12	1:B:155:VAL:O	1.76	0.84
1:B:122:ILE:HG12	1:B:148:GLU:HB3	1.56	0.84
1:A:106:THR:HG23	1:A:108:GLN:N	1.91	0.83
1:A:197:ASN:C	1:A:197:ASN:ND2	2.30	0.83

*Continued on next page...*

*Continued from previous page...*

Atom-1	Atom-2	Interatomic distance (Å)	Clash overlap (Å)
1:A:238:MSE:HE2	1:A:298:GLU:HA	1.58	0.83
1:B:30:HIS:CE1	1:B:33:HIS:CD2	2.67	0.83
1:B:123:ILE:HD11	1:B:141:LEU:HD13	1.61	0.82
1:C:21:VAL:HG23	1:C:120:ALA:HB2	1.60	0.82
1:A:67:TYR:HB2	1:B:194:VAL:HG13	1.60	0.82
1:B:49:LEU:CD1	1:B:121:LYS:HG3	2.10	0.81
1:C:2:ILE:HG22	1:C:86:LYS:HG3	1.61	0.81
1:B:31:LYS:CA	1:B:34:GLN:OE1	2.26	0.81
1:B:49:LEU:HD13	1:B:121:LYS:HG3	1.62	0.81
1:B:29:ILE:N	1:B:29:ILE:HD13	1.94	0.80
1:A:194:VAL:CG1	1:B:67:TYR:HB2	2.12	0.79
1:B:123:ILE:O	1:B:123:ILE:HG13	1.83	0.79
4:B:314:PEG:H41	7:B:398:HOH:O	1.82	0.79
1:B:122:ILE:HG23	1:B:148:GLU:O	1.83	0.79
1:C:21:VAL:HG21	1:C:120:ALA:HB2	1.65	0.79
1:B:34:GLN:CG	1:B:88:GLU:OE2	2.32	0.78
1:B:61:LYS:HD2	3:B:316:GOL:H12	1.65	0.78
1:C:136:LYS:CD	1:C:144:TYR:OH	2.32	0.78
1:B:284:PHE:H	3:B:315:GOL:H11	1.46	0.77
1:A:284:PHE:CD2	1:A:290:LEU:HD13	2.20	0.76
1:B:18:ASP:HB3	1:B:121:LYS:HG2	1.65	0.76
1:A:243:LYS:O	1:A:244:ASN:HB2	1.84	0.76
1:C:118:MSE:O	1:C:119:ASN:HB2	1.84	0.76
1:C:136:LYS:CE	1:C:144:TYR:OH	2.35	0.75
1:B:29:ILE:HD13	1:B:29:ILE:H	1.50	0.75
1:A:238:MSE:HE2	1:A:298:GLU:CA	2.16	0.74
1:C:136:LYS:HD2	1:C:144:TYR:CZ	2.23	0.74
1:B:8:LYS:HE3	1:B:8:LYS:HA	1.69	0.74
1:C:62:ILE:HD13	1:C:71:LEU:HB3	1.70	0.73
1:C:193:VAL:HG11	1:C:265:ILE:HD12	1.69	0.73
1:B:120:ALA:O	1:B:145:PHE:HZ	1.73	0.72
1:A:260:ASP:CA	3:A:315:GOL:H31	2.15	0.72
3:A:315:GOL:H12	1:C:41:ASN:HD22	1.54	0.72
1:B:207:THR:HG21	1:B:255:GLU:HG2	1.70	0.71
1:B:39:VAL:HG21	1:B:152:VAL:HG22	1.73	0.71
1:A:67:TYR:HB2	1:B:194:VAL:CG1	2.20	0.71
1:C:19:SER:HA	1:C:50:PRO:HD2	1.73	0.71
1:A:111:PHE:HA	1:A:115:ILE:HG12	1.73	0.70
1:B:135:LYS:CG	1:B:135:LYS:O	2.39	0.70
1:C:1:MSE:SE	1:C:1:MSE:N	2.76	0.69
1:C:68:HIS:ND1	1:C:69:PRO:HD2	2.08	0.69

*Continued on next page...*

*Continued from previous page...*

Atom-1	Atom-2	Interatomic distance (Å)	Clash overlap (Å)
1:B:157:ASP:OD1	1:B:157:ASP:C	2.30	0.69
1:B:215:ARG:HD3	4:B:314:PEG:H21	1.74	0.69
1:C:262:ASN:CG	1:C:262:ASN:O	2.30	0.69
1:B:65:GLU:HB3	1:B:66:PRO:HD2	1.75	0.69
1:B:88:GLU:HA	1:B:88:GLU:OE1	1.93	0.69
1:B:134:ASP:O	1:B:135:LYS:CB	2.39	0.69
1:A:196:GLY:O	1:A:197:ASN:C	2.30	0.68
1:A:238:MSE:HE3	1:A:259:PHE:HZ	1.58	0.68
1:A:232:ARG:HG3	1:A:232:ARG:HH11	1.59	0.68
1:A:106:THR:HG22	1:A:109:GLU:H	1.59	0.67
1:A:260:ASP:OD2	3:A:315:GOL:H2	1.94	0.67
1:A:207:THR:CG2	1:A:255:GLU:HB3	2.25	0.67
1:B:20:VAL:HG21	1:B:44:ALA:HB2	1.75	0.67
3:A:315:GOL:C1	1:C:41:ASN:HD22	2.08	0.66
1:B:35:GLU:HB2	1:B:155:VAL:HG21	1.75	0.66
1:A:223:VAL:HG12	1:A:278:ILE:HD12	1.77	0.66
1:A:192:MSE:CE	1:B:62:ILE:HD13	2.26	0.66
1:C:31:LYS:HE2	7:C:361:HOH:O	1.95	0.66
1:C:128:ASP:OD2	7:C:370:HOH:O	2.13	0.65
1:B:24:GLY:H	4:B:317[B]:PEG:H12	1.62	0.65
1:B:18:ASP:HB3	1:B:121:LYS:CD	2.27	0.64
1:B:135:LYS:O	1:B:135:LYS:HG3	1.97	0.64
1:B:146:ASP:OD1	1:B:147:GLY:N	2.30	0.64
1:B:114:TYR:O	1:B:118:MSE:CG	2.46	0.63
1:B:159:LYS:HB3	1:B:166:ARG:CZ	2.28	0.63
1:C:216:THR:HG21	7:C:328:HOH:O	1.97	0.63
1:A:197:ASN:ND2	1:A:197:ASN:O	2.30	0.63
1:B:157:ASP:OD1	1:B:159:LYS:N	2.30	0.63
1:B:48:LEU:N	1:B:48:LEU:HD22	2.13	0.63
1:B:18:ASP:CG	1:B:121:LYS:HD3	2.18	0.63
1:A:74:HIS:CD2	3:A:317:GOL:H31	2.34	0.63
1:B:143:ASN:OD1	1:B:143:ASN:N	2.30	0.63
1:B:142:LYS:HA	7:B:374:HOH:O	1.97	0.62
1:B:134:ASP:OD2	1:B:134:ASP:N	2.30	0.62
1:C:167:ILE:O	1:C:171:ILE:HG13	2.00	0.62
1:A:32:GLY:HA2	1:A:155:VAL:HG21	1.82	0.62
1:B:107:ALA:N	1:B:134:ASP:OD2	2.29	0.62
1:A:243:LYS:HG2	1:A:247:PHE:CZ	2.35	0.61
1:B:53:VAL:HG12	1:B:93:LEU:CD1	2.30	0.61
1:B:199:ARG:HD3	7:B:403:HOH:O	2.00	0.61
1:A:167:ILE:HD11	1:A:182:LEU:CB	2.31	0.61

*Continued on next page...*

*Continued from previous page...*

Atom-1	Atom-2	Interatomic distance (Å)	Clash overlap (Å)
1:B:102:PHE:HZ	4:B:317[A]:PEG:H32	1.65	0.61
1:C:58:GLU:HG3	7:C:332:HOH:O	2.00	0.61
1:B:159:LYS:HB3	1:B:166:ARG:NH1	2.16	0.60
1:B:142:LYS:HE2	7:B:374:HOH:O	2.01	0.60
1:C:111:PHE:HE2	1:C:131:PHE:HE2	1.47	0.60
1:C:277:ARG:HG2	1:C:278:ILE:N	2.16	0.60
1:B:221:ASP:OD1	1:B:243:LYS:HG2	2.02	0.60
1:B:49:LEU:CD1	1:B:121:LYS:HE3	2.24	0.59
1:B:33:HIS:HB3	1:B:37:PHE:HE2	1.66	0.59
1:B:114:TYR:O	1:B:118:MSE:HG2	2.02	0.59
1:C:1:MSE:SE	1:C:1:MSE:H3	2.34	0.59
1:C:136:LYS:HD2	1:C:144:TYR:CE2	2.37	0.59
1:B:65:GLU:HB3	1:B:66:PRO:CD	2.33	0.59
1:B:129:TYR:CZ	1:B:131:PHE:HB3	2.37	0.59
1:C:17:SER:OG	1:C:18:ASP:N	2.34	0.59
1:A:10:GLN:NE2	1:A:113:THR:HG23	2.18	0.59
1:B:19:SER:HB2	1:B:50:PRO:O	2.02	0.59
1:B:120:ALA:O	1:B:145:PHE:CZ	2.53	0.59
1:C:136:LYS:HE2	1:C:144:TYR:OH	2.03	0.59
1:C:57:ASN:OD1	1:C:95:LEU:HB3	2.02	0.59
1:C:229:GLU:O	1:C:270:VAL:HG23	2.03	0.59
1:C:2:ILE:CG2	1:C:86:LYS:HG3	2.33	0.58
1:A:167:ILE:HD11	1:A:182:LEU:HB2	1.84	0.58
1:A:233:GLN:HB2	7:A:357:HOH:O	2.02	0.58
1:B:31:LYS:HA	1:B:34:GLN:HB2	1.85	0.58
1:B:284:PHE:CD2	1:B:290:LEU:HD13	2.39	0.58
1:C:19:SER:O	1:C:120:ALA:HA	2.03	0.57
3:A:315:GOL:H12	1:C:38:ARG:HA	1.86	0.57
1:B:111:PHE:HA	1:B:115:ILE:CG1	2.35	0.57
1:A:74:HIS:O	1:A:216:THR:HA	2.04	0.57
1:A:61:LYS:NZ	5:A:316:ACY:H1	2.20	0.57
1:B:55:THR:HG23	1:B:56:PHE:N	2.20	0.57
1:C:189:SER:HB2	1:C:274:TRP:HE1	1.70	0.57
1:B:59:SER:OG	1:B:61:LYS:HB2	2.05	0.57
4:B:314:PEG:C4	7:B:398:HOH:O	2.46	0.57
1:C:131:PHE:HD1	1:C:131:PHE:H	1.51	0.57
1:A:188:PRO:HB2	1:A:271:MSE:CE	2.35	0.56
1:A:278:ILE:HG22	1:A:279:ARG:HG2	1.87	0.56
1:C:228:VAL:HG21	1:C:256:VAL:HG11	1.87	0.56
1:B:122:ILE:HG13	7:B:332:HOH:O	2.04	0.56
1:C:62:ILE:CD1	1:C:71:LEU:HB3	2.36	0.56

*Continued on next page...*



*Continued from previous page...*

Atom-1	Atom-2	Interatomic distance (Å)	Clash overlap (Å)
1:A:242:GLY:O	1:A:247:PHE:CE2	2.59	0.56
1:B:131:PHE:CZ	1:B:141:LEU:HD23	2.41	0.56
1:A:10:GLN:HA	1:A:13:ILE:HD12	1.87	0.56
1:A:207:THR:HG21	1:A:255:GLU:HB3	1.88	0.56
1:C:259:PHE:O	1:C:260:ASP:HB2	2.05	0.55
1:B:18:ASP:CB	1:B:121:LYS:HD3	2.36	0.55
1:A:232:ARG:HG3	1:A:232:ARG:NH1	2.21	0.55
1:B:207:THR:CG2	1:B:255:GLU:HG2	2.37	0.55
1:A:7:ILE:HG13	1:A:7:ILE:O	2.07	0.54
1:B:40:ALA:HB2	1:B:124:VAL:HG21	1.89	0.54
1:C:136:LYS:CD	1:C:144:TYR:CE2	2.91	0.54
1:B:4:THR:HG22	1:B:93:LEU:HD23	1.90	0.54
1:B:259:PHE:HE1	1:B:301:THR:CG2	2.19	0.54
1:A:10:GLN:OE1	1:A:10:GLN:N	2.30	0.54
3:A:315:GOL:C1	1:C:41:ASN:ND2	2.71	0.54
3:A:315:GOL:H11	1:C:41:ASN:ND2	2.23	0.54
1:B:83:ARG:HG3	7:B:380:HOH:O	2.08	0.54
1:A:236:ARG:HG3	1:A:237:ALA:N	2.21	0.53
1:B:21:VAL:CG2	1:B:120:ALA:HB2	2.37	0.53
1:B:129:TYR:CE2	1:B:131:PHE:HB3	2.42	0.53
1:B:193:VAL:HG21	1:B:265:ILE:HD12	1.91	0.53
1:A:260:ASP:OD2	3:A:315:GOL:C2	2.55	0.53
1:C:134:ASP:O	1:C:135:LYS:CB	2.56	0.53
1:B:31:LYS:O	1:B:34:GLN:HB2	2.09	0.53
1:B:107:ALA:H	1:B:134:ASP:CG	2.11	0.53
1:C:2:ILE:HD13	1:C:82:GLU:HG3	1.90	0.53
1:C:62:ILE:HD11	1:C:71:LEU:O	2.08	0.53
1:A:106:THR:HG22	1:A:109:GLU:CD	2.28	0.53
1:B:52:VAL:CG2	1:B:118:MSE:HE2	2.39	0.53
1:C:21:VAL:HG23	1:C:120:ALA:CB	2.35	0.53
1:A:248:ASP:OD2	1:A:248:ASP:C	2.47	0.52
1:B:30:HIS:ND1	1:B:30:HIS:C	2.62	0.52
1:C:19:SER:HB2	1:C:52:VAL:HG23	1.91	0.52
1:B:114:TYR:O	1:B:118:MSE:HG3	2.09	0.52
1:C:4:THR:CG2	1:C:95:LEU:CD2	2.88	0.52
1:B:122:ILE:HA	1:B:145:PHE:HE2	1.73	0.52
1:C:228:VAL:HG13	1:C:270:VAL:HG21	1.90	0.52
1:A:29:ILE:HD11	1:A:81:ARG:HG3	1.92	0.52
1:C:114:TYR:O	1:C:118:MSE:HE2	2.10	0.52
1:C:62:ILE:HD13	1:C:71:LEU:CB	2.37	0.52
1:C:193:VAL:HG21	1:C:265:ILE:HD13	1.91	0.52

*Continued on next page...*

*Continued from previous page...*

Atom-1	Atom-2	Interatomic distance (Å)	Clash overlap (Å)
1:B:18:ASP:HB3	1:B:121:LYS:HD3	1.90	0.52
1:B:33:HIS:HB3	1:B:37:PHE:CE2	2.43	0.52
1:B:85:LEU:HD13	1:B:93:LEU:HD22	1.92	0.52
1:A:172:LEU:O	1:A:220:ALA:HB2	2.10	0.52
1:A:242:GLY:O	1:A:247:PHE:CD2	2.63	0.52
1:C:2:ILE:HG12	1:C:3:ILE:N	2.25	0.51
1:C:192:MSE:HB3	1:C:213:LEU:HD21	1.92	0.51
1:C:134:ASP:O	1:C:135:LYS:HB2	2.09	0.51
1:C:231:GLN:O	1:C:232:ARG:HB2	2.09	0.51
1:B:197:ASN:OD1	1:B:199:ARG:HG2	2.10	0.51
1:C:111:PHE:HE2	1:C:131:PHE:CE2	2.25	0.51
1:B:89:GLY:HA2	7:B:365:HOH:O	2.11	0.51
1:A:106:THR:HG21	7:A:329:HOH:O	2.10	0.51
1:B:39:VAL:HG21	1:B:152:VAL:CG2	2.40	0.51
1:B:240:SER:HB3	1:B:281:MSE:HE1	1.91	0.51
1:A:72:PHE:CB	4:A:319:PEG:H21	2.41	0.51
1:B:41:ASN:O	1:B:45:ARG:HG2	2.11	0.51
1:B:251:GLU:HG3	1:B:251:GLU:O	2.11	0.51
1:C:4:THR:CG2	1:C:95:LEU:HD21	2.40	0.51
1:C:67:TYR:HE1	1:C:72:PHE:CE2	2.29	0.51
1:B:100:SER:OG	7:B:338:HOH:O	2.18	0.50
1:A:238:MSE:HE2	1:A:298:GLU:N	2.26	0.50
1:B:159:LYS:CB	1:B:166:ARG:NH2	2.74	0.50
1:A:44:ALA:HB1	1:A:49:LEU:O	2.12	0.50
1:A:194:VAL:CG1	1:B:67:TYR:CB	2.87	0.50
1:A:197:ASN:ND2	1:A:209:ASN:HD21	2.09	0.50
1:C:129:TYR:OH	3:C:313:GOL:H2	2.11	0.50
1:C:131:PHE:N	1:C:131:PHE:CD1	2.79	0.50
1:B:21:VAL:HG21	1:B:120:ALA:HB2	1.93	0.50
1:B:110:PHE:CE2	1:B:115:ILE:HD11	2.47	0.50
1:B:40:ALA:CB	1:B:124:VAL:HG21	2.42	0.49
1:C:265:ILE:O	1:C:268:GLU:HB3	2.12	0.49
1:B:31:LYS:O	1:B:34:GLN:N	2.45	0.49
1:B:215:ARG:HD3	4:B:314:PEG:H42	1.93	0.49
1:A:18:ASP:O	1:A:50:PRO:HD2	2.11	0.49
1:A:215:ARG:HD3	4:A:319:PEG:H32	1.94	0.49
1:C:131:PHE:HD1	1:C:131:PHE:N	2.10	0.49
1:B:8:LYS:HA	1:B:8:LYS:CE	2.40	0.49
1:B:129:TYR:OH	4:B:317[B]:PEG:H21	2.12	0.49
1:C:111:PHE:CE2	1:C:131:PHE:HE2	2.29	0.49
1:A:284:PHE:CE2	1:A:290:LEU:HD13	2.47	0.49

*Continued on next page...*

*Continued from previous page...*

Atom-1	Atom-2	Interatomic distance (Å)	Clash overlap (Å)
1:B:96:LEU:HG	1:B:97:ASP:N	2.27	0.49
1:B:30:HIS:O	1:B:33:HIS:HB2	2.13	0.49
1:A:156:GLU:HG2	1:A:161:LYS:HA	1.95	0.49
1:C:136:LYS:HD3	1:C:144:TYR:HE2	1.78	0.49
1:A:193:VAL:HG21	1:A:265:ILE:HD12	1.94	0.48
1:B:52:VAL:HG21	1:B:118:MSE:HE2	1.96	0.48
1:B:131:PHE:CZ	1:B:141:LEU:CD2	2.97	0.48
2:C:311:SO4:O3	3:C:314:GOL:H31	2.14	0.48
1:A:123:ILE:HD12	1:A:145:PHE:CD2	2.48	0.48
1:B:111:PHE:HA	1:B:115:ILE:HG13	1.95	0.48
1:B:115:ILE:HA	1:B:118:MSE:HG3	1.96	0.48
1:A:167:ILE:HD11	1:A:182:LEU:HB3	1.96	0.48
1:A:197:ASN:HD21	1:A:209:ASN:HD21	1.61	0.48
1:A:107:ALA:HB1	1:A:131:PHE:CE1	2.49	0.48
1:B:159:LYS:HB3	1:B:166:ARG:NH2	2.27	0.48
1:A:177:LYS:HE3	1:A:276:ASP:OD2	2.14	0.47
1:C:107:ALA:HB2	1:C:136:LYS:HG3	1.96	0.47
1:C:129:TYR:CZ	1:C:131:PHE:HB3	2.50	0.47
1:B:15:THR:HG23	1:B:92:GLU:OE1	2.14	0.47
1:B:33:HIS:O	1:B:37:PHE:CE2	2.68	0.47
1:C:4:THR:HG23	1:C:95:LEU:HD21	1.97	0.47
1:A:25[A]:TYR:N	1:A:25[A]:TYR:CD1	2.82	0.47
1:A:30:HIS:O	1:A:34:GLN:HG3	2.15	0.47
1:C:101:GLN:HG2	1:C:102:PHE:N	2.28	0.47
1:A:236:ARG:NH1	1:A:304:TRP:O	2.48	0.47
1:C:7:ILE:HG22	1:C:12:ASP:HB3	1.97	0.47
1:A:28:GLY:HA2	1:A:76:LEU:CD1	2.44	0.46
1:B:41:ASN:OD1	1:B:45:ARG:NH1	2.45	0.46
1:A:10:GLN:CG	1:A:113:THR:HG23	2.45	0.46
1:A:68:HIS:H	1:A:71:LEU:HD12	1.80	0.46
1:B:259:PHE:HE1	1:B:301:THR:HG21	1.81	0.46
1:B:194:VAL:CG1	1:B:195:HIS:N	2.77	0.46
1:C:4:THR:HG22	1:C:95:LEU:CD2	2.46	0.46
1:B:284:PHE:HZ	1:B:293:GLN:HG2	1.81	0.46
1:A:167:ILE:CD1	1:A:182:LEU:HB2	2.45	0.46
1:B:224:TYR:CE1	1:B:277:ARG:HG3	2.51	0.46
1:B:259:PHE:CE2	1:B:298:GLU:HG3	2.51	0.46
1:C:54:MSE:HE1	1:C:56:PHE:CE1	2.50	0.46
1:B:34:GLN:HG2	1:B:88:GLU:OE2	2.11	0.46
1:C:193:VAL:HG21	1:C:265:ILE:CD1	2.45	0.46
1:A:1:MSE:HE2	1:A:1:MSE:O	2.17	0.45

*Continued on next page...*

*Continued from previous page...*

Atom-1	Atom-2	Interatomic distance (Å)	Clash overlap (Å)
1:B:139:GLU:N	1:B:139:GLU:OE2	2.49	0.45
1:C:229:GLU:HB3	1:C:271:MSE:HB2	1.97	0.45
1:A:10:GLN:HG3	1:A:113:THR:HG23	1.98	0.45
1:A:192:MSE:HE1	1:B:62:ILE:HD13	1.97	0.45
1:C:61:LYS:O	1:C:65:GLU:N	2.44	0.45
1:A:10:GLN:CD	1:A:113:THR:HG23	2.36	0.45
1:B:18:ASP:CB	1:B:121:LYS:CD	2.91	0.45
1:B:102:PHE:CZ	4:B:317[A]:PEG:H32	2.48	0.45
1:A:146:ASP:OD1	1:A:146:ASP:N	2.37	0.45
1:C:126:GLY:HA3	7:C:370:HOH:O	2.15	0.45
1:A:192:MSE:HE2	1:B:72:PHE:CZ	2.51	0.45
1:B:142:LYS:HB2	1:B:142:LYS:HE3	1.56	0.45
1:B:45:ARG:HD3	1:B:45:ARG:HA	1.33	0.45
1:B:203:ILE:O	1:B:203:ILE:HG22	2.16	0.45
1:C:80:GLU:OE1	1:C:83:ARG:NH1	2.43	0.45
1:A:139:GLU:HA	1:A:142:LYS:NZ	2.31	0.45
1:C:53:VAL:CG1	1:C:54:MSE:N	2.80	0.45
1:A:243:LYS:HE2	1:A:247:PHE:HZ	1.82	0.45
1:B:203:ILE:O	1:B:203:ILE:CG2	2.64	0.45
1:B:203:ILE:N	1:B:203:ILE:HD13	2.32	0.45
1:B:204:GLY:C	1:B:205:TYR:CD2	2.91	0.45
1:A:61:LYS:HZ2	5:A:316:ACY:H1	1.81	0.44
1:B:129:TYR:OH	4:B:317[A]:PEG:H21	2.17	0.44
1:C:29:ILE:N	1:C:29:ILE:HD13	2.32	0.44
1:C:108:GLN:HB3	7:C:353:HOH:O	2.15	0.44
1:C:138:ALA:O	1:C:141:LEU:HB2	2.18	0.44
1:B:75:ILE:HD13	1:B:167:ILE:CG2	2.48	0.44
1:B:8:LYS:HB3	1:B:8:LYS:HE2	1.69	0.44
1:B:111:PHE:CD1	1:B:115:ILE:HG13	2.52	0.44
1:C:254:PHE:HD1	1:C:255:GLU:N	2.16	0.44
1:A:302:ARG:HH22	3:A:315:GOL:H2	1.81	0.44
1:B:20:VAL:O	1:B:51:ILE:HA	2.18	0.44
1:B:29:ILE:HG21	1:B:84:LYS:HB3	1.98	0.44
1:A:107:ALA:HB1	1:A:131:PHE:HE1	1.82	0.44
4:A:319:PEG:H41	7:A:375:HOH:O	2.18	0.44
1:B:194:VAL:HG13	1:B:195:HIS:N	2.32	0.44
1:C:2:ILE:HG22	1:C:86:LYS:NZ	2.32	0.44
1:A:260:ASP:N	7:A:370:HOH:O	2.50	0.44
1:B:39:VAL:CG1	1:B:150:ILE:HG21	2.47	0.44
1:C:67:TYR:HE1	1:C:72:PHE:HE2	1.65	0.44
1:A:194:VAL:HG13	1:A:195:HIS:N	2.32	0.44

*Continued on next page...*

*Continued from previous page...*

Atom-1	Atom-2	Interatomic distance (Å)	Clash overlap (Å)
4:A:314:PEG:H22	1:B:195:HIS:ND1	2.33	0.44
1:B:231:GLN:O	1:B:232:ARG:HB2	2.16	0.44
1:A:232:ARG:CZ	1:B:8:LYS:HG3	2.48	0.44
1:C:221:ASP:OD2	1:C:242:GLY:C	2.56	0.44
1:A:15:THR:HG22	1:A:94:TYR:HH	1.75	0.43
1:C:67:TYR:CE1	1:C:72:PHE:HE2	2.36	0.43
1:A:72:PHE:HB2	4:A:319:PEG:H21	2.00	0.43
1:B:30:HIS:CE1	1:B:33:HIS:H	2.36	0.43
1:C:52:VAL:HG11	1:C:118:MSE:HG2	2.00	0.43
1:A:155:VAL:H	3:A:312:GOL:H12	1.83	0.43
1:B:129:TYR:OH	1:B:131:PHE:HB3	2.19	0.43
1:B:207:THR:CG2	1:B:208:ALA:N	2.82	0.43
1:B:187:LEU:O	1:B:273:TYR:HA	2.19	0.43
1:C:136:LYS:CD	1:C:144:TYR:CZ	2.97	0.43
1:B:7:ILE:HG22	1:B:12:ASP:HB3	2.01	0.43
1:A:78:PRO:CG	3:A:317:GOL:H32	2.48	0.43
1:B:167:ILE:HD13	1:B:183:LEU:HG	1.99	0.43
1:B:228:VAL:HG12	1:B:230:ILE:HG13	2.01	0.43
1:B:259:PHE:CZ	1:B:298:GLU:HG3	2.54	0.43
1:A:168:ARG:HD3	1:A:217:TYR:CZ	2.54	0.43
1:B:39:VAL:HG11	1:B:150:ILE:HG21	2.01	0.43
1:C:31:LYS:HE3	7:C:368:HOH:O	2.18	0.43
1:A:194:VAL:CG1	1:A:195:HIS:N	2.81	0.42
1:B:68:HIS:ND1	1:B:70:ASP:HB2	2.34	0.42
1:B:247:PHE:CE1	3:B:313:GOL:H32	2.54	0.42
1:A:31:LYS:HD2	1:A:31:LYS:HA	1.76	0.42
1:B:68:HIS:CG	1:B:69:PRO:HD2	2.55	0.42
1:A:262:ASN:O	1:A:262:ASN:ND2	2.30	0.42
1:B:51:ILE:O	1:B:91:GLU:HB2	2.18	0.42
1:B:204:GLY:C	1:B:205:TYR:HD2	2.22	0.42
1:C:62:ILE:H	1:C:62:ILE:HG12	1.54	0.42
1:A:102:PHE:CD2	1:A:102:PHE:C	2.93	0.42
1:B:18:ASP:OD1	1:B:121:LYS:HD3	2.19	0.42
1:C:2:ILE:HG22	1:C:86:LYS:HZ1	1.84	0.42
1:B:230:ILE:HD11	1:B:258:ILE:HD13	2.02	0.42
1:C:227:ASP:OD1	1:C:236:ARG:HD3	2.20	0.42
1:B:77:ASN:C	1:B:77:ASN:OD1	2.58	0.41
1:B:146:ASP:CG	1:B:147:GLY:N	2.73	0.41
1:C:225:VAL:O	1:C:275:LEU:HB2	2.20	0.41
1:B:29:ILE:HB	1:B:84:LYS:HD3	2.01	0.41
1:B:53:VAL:HG12	1:B:93:LEU:HD13	2.02	0.41

*Continued on next page...*

Continued from previous page...

Atom-1	Atom-2	Interatomic distance (Å)	Clash overlap (Å)
1:C:216:THR:CG2	7:C:328:HOH:O	2.64	0.41
1:A:9:ASN:OD1	1:A:11:LYS:HB2	2.19	0.41
1:A:78:PRO:HD3	3:A:317:GOL:H32	2.03	0.41
1:A:261:PHE:CZ	1:A:263:GLN:HB2	2.56	0.41
1:B:135:LYS:O	1:B:135:LYS:HG2	2.20	0.41
1:A:2:ILE:HG22	1:A:86:LYS:HD3	2.02	0.41
1:A:227:ASP:OD1	1:A:236:ARG:HD3	2.20	0.41
1:C:114:TYR:C	1:C:118:MSE:HE2	2.39	0.41
1:C:152:VAL:HA	1:C:153:PRO:HD3	1.94	0.41
1:A:78:PRO:HG3	3:A:317:GOL:H32	2.01	0.41
1:A:131:PHE:HE2	1:A:137:THR:O	2.03	0.41
1:C:25:TYR:CD1	1:C:25:TYR:N	2.89	0.41
1:A:238:MSE:SE	1:A:297:ASP:HB3	2.71	0.41
1:B:159:LYS:HD2	1:B:159:LYS:O	2.21	0.41
1:C:188:PRO:HB2	1:C:271:MSE:HE1	2.03	0.41
1:B:15:THR:CG2	1:B:52:VAL:HG11	2.51	0.41
1:B:201:ARG:HG3	7:B:366:HOH:O	2.20	0.41
1:B:59:SER:HA	1:B:60:PRO:HD2	1.98	0.40
1:A:142:LYS:H	1:A:142:LYS:HG3	1.59	0.40
1:C:228:VAL:HG13	1:C:270:VAL:CG2	2.50	0.40
1:A:111:PHE:CD1	1:A:115:ILE:HG13	2.56	0.40
1:A:156:GLU:HG2	1:A:161:LYS:HG2	2.02	0.40
1:B:122:ILE:HG21	1:B:150:ILE:HD12	2.04	0.40
1:B:157:ASP:O	1:B:160:GLY:N	2.54	0.40
1:C:80:GLU:HG3	1:C:271:MSE:HE1	2.02	0.40
1:C:277:ARG:CG	1:C:278:ILE:N	2.82	0.40
1:B:17:SER:OG	1:B:18:ASP:N	2.54	0.40

There are no symmetry-related clashes.

## 5.3 Torsion angles [i](#)

### 5.3.1 Protein backbone [i](#)

In the following table, the Percentiles column shows the percent Ramachandran outliers of the chain as a percentile score with respect to all X-ray entries followed by that with respect to entries of similar resolution.

The Analysed column shows the number of residues for which the backbone conformation was analysed, and the total number of residues.

Mol	Chain	Analysed	Favoured	Allowed	Outliers	Percentiles	
1	A	292/308 (95%)	283 (97%)	8 (3%)	1 (0%)	41	59
1	B	302/308 (98%)	295 (98%)	5 (2%)	2 (1%)	22	36
1	C	254/308 (82%)	244 (96%)	10 (4%)	0	100	100
All	All	848/924 (92%)	822 (97%)	23 (3%)	3 (0%)	34	52

All (3) Ramachandran outliers are listed below:

Mol	Chain	Res	Type
1	B	119	ASN
1	B	135	LYS
1	A	188	PRO

### 5.3.2 Protein sidechains [i](#)

In the following table, the Percentiles column shows the percent sidechain outliers of the chain as a percentile score with respect to all X-ray entries followed by that with respect to entries of similar resolution.

The Analysed column shows the number of residues for which the sidechain conformation was analysed, and the total number of residues.

Mol	Chain	Analysed	Rotameric	Outliers	Percentiles	
1	A	259/257 (101%)	236 (91%)	23 (9%)	9	17
1	B	262/257 (102%)	220 (84%)	42 (16%)	2	4
1	C	223/257 (87%)	195 (87%)	28 (13%)	4	7
All	All	744/771 (96%)	651 (88%)	93 (12%)	4	8

All (93) residues with a non-rotameric sidechain are listed below:

Mol	Chain	Res	Type
1	A	1	MSE
1	A	3	ILE
1	A	15	THR
1	A	20	VAL
1	A	21	VAL
1	A	45	ARG
1	A	54	MSE
1	A	134	ASP
1	A	135	LYS
1	A	139	GLU

*Continued on next page...*

*Continued from previous page...*

<b>Mol</b>	<b>Chain</b>	<b>Res</b>	<b>Type</b>
1	A	146	ASP
1	A	158	GLU
1	A	175	ASN
1	A	177	LYS
1	A	178	GLU
1	A	194	VAL
1	A	197	ASN
1	A	225	VAL
1	A	232	ARG
1	A	234	LYS
1	A	248	ASP
1	A	262	ASN
1	A	279	ARG
1	B	8	LYS
1	B	10	GLN
1	B	11	LYS
1	B	15	THR
1	B	17	SER
1	B	20	VAL
1	B	30	HIS
1	B	34	GLN
1	B	35	GLU
1	B	45	ARG
1	B	53	VAL
1	B	54	MSE
1	B	55	THR
1	B	81	ARG
1	B	88	GLU
1	B	96	LEU
1	B	118	MSE
1	B	121	LYS
1	B	123	ILE
1	B	128	ASP
1	B	134	ASP
1	B	142	LYS
1	B	143	ASN
1	B	146	ASP
1	B	157	ASP
1	B	158	GLU
1	B	159	LYS
1	B	161	LYS
1	B	165	THR

*Continued on next page...*



*Continued from previous page...*

<b>Mol</b>	<b>Chain</b>	<b>Res</b>	<b>Type</b>
1	B	187	LEU
1	B	194	VAL
1	B	199	ARG
1	B	203	ILE
1	B	221	ASP
1	B	225	VAL
1	B	243	LYS
1	B	248	ASP
1	B	253	ARG
1	B	254	PHE
1	B	256	VAL
1	B	286	SER
1	B	294	LEU
1	C	1	MSE
1	C	2	ILE
1	C	17	SER
1	C	38	ARG
1	C	45	ARG
1	C	46	LYS
1	C	62	ILE
1	C	64	LEU
1	C	86	LYS
1	C	91	GLU
1	C	95	LEU
1	C	101	GLN
1	C	108	GLN
1	C	118	MSE
1	C	131	PHE
1	C	133	SER
1	C	135	LYS
1	C	136	LYS
1	C	146	ASP
1	C	169	GLN
1	C	189	SER
1	C	194	VAL
1	C	236	ARG
1	C	253	ARG
1	C	254	PHE
1	C	262	ASN
1	C	265	ILE
1	C	278	ILE

Sometimes sidechains can be flipped to improve hydrogen bonding and reduce clashes. All (7) such

sidechains are listed below:

Mol	Chain	Res	Type
1	A	119	ASN
1	A	197	ASN
1	A	244	ASN
1	B	33	HIS
1	B	119	ASN
1	C	41	ASN
1	C	169	GLN

### 5.3.3 RNA [i](#)

There are no RNA molecules in this entry.

### 5.4 Non-standard residues in protein, DNA, RNA chains [i](#)

There are no non-standard protein/DNA/RNA residues in this entry.

### 5.5 Carbohydrates [i](#)

There are no monosaccharides in this entry.

### 5.6 Ligand geometry [i](#)

Of 23 ligands modelled in this entry, 1 is monoatomic - leaving 22 for Mogul analysis.

In the following table, the Counts columns list the number of bonds (or angles) for which Mogul statistics could be retrieved, the number of bonds (or angles) that are observed in the model and the number of bonds (or angles) that are defined in the Chemical Component Dictionary. The Link column lists molecule types, if any, to which the group is linked. The Z score for a bond length (or angle) is the number of standard deviations the observed value is removed from the expected value. A bond length (or angle) with  $|Z| > 2$  is considered an outlier worth inspection. RMSZ is the root-mean-square of all Z scores of the bond lengths (or angles).

Mol	Type	Chain	Res	Link	Bond lengths			Bond angles		
					Counts	RMSZ	$\# Z  > 2$	Counts	RMSZ	$\# Z  > 2$
3	GOL	C	313	-	5,5,5	0.42	0	5,5,5	0.70	0
4	PEG	B	317[B]	-	6,6,6	0.53	0	5,5,5	0.23	0
4	PEG	B	314	-	6,6,6	0.60	0	5,5,5	0.54	0
2	SO4	C	311	-	4,4,4	0.21	0	6,6,6	0.63	0
2	SO4	B	312	-	4,4,4	0.23	0	6,6,6	0.12	0
3	GOL	C	315	-	5,5,5	0.46	0	5,5,5	0.66	0

Mol	Type	Chain	Res	Link	Bond lengths			Bond angles		
					Counts	RMSZ	# Z  > 2	Counts	RMSZ	# Z  > 2
3	GOL	C	316	-	5,5,5	0.41	0	5,5,5	0.35	0
4	PEG	A	314	-	6,6,6	0.42	0	5,5,5	0.71	0
2	SO4	B	311	-	4,4,4	0.35	0	6,6,6	0.39	0
3	GOL	C	312	-	5,5,5	0.45	0	5,5,5	0.67	0
3	GOL	B	315	-	5,5,5	0.33	0	5,5,5	0.51	0
3	GOL	B	313	-	5,5,5	0.44	0	5,5,5	0.25	0
5	ACY	A	316	-	3,3,3	0.81	0	3,3,3	0.94	0
3	GOL	C	314	-	5,5,5	0.45	0	5,5,5	0.49	0
3	GOL	A	318	-	5,5,5	0.40	0	5,5,5	0.22	0
2	SO4	A	311	-	4,4,4	0.40	0	6,6,6	0.38	0
4	PEG	A	319	-	6,6,6	0.97	0	5,5,5	1.03	0
3	GOL	B	316	-	5,5,5	0.41	0	5,5,5	0.84	0
4	PEG	B	317[A]	-	6,6,6	0.52	0	5,5,5	0.60	0
3	GOL	A	317	-	5,5,5	0.55	0	5,5,5	0.73	0
3	GOL	A	312	-	5,5,5	0.43	0	5,5,5	0.57	0
3	GOL	A	315	-	5,5,5	0.49	0	5,5,5	0.92	0

In the following table, the Chirals column lists the number of chiral outliers, the number of chiral centers analysed, the number of these observed in the model and the number defined in the Chemical Component Dictionary. Similar counts are reported in the Torsion and Rings columns. '-' means no outliers of that kind were identified.

Mol	Type	Chain	Res	Link	Chirals	Torsions	Rings
4	PEG	A	314	-	-	3/4/4/4	-
3	GOL	C	315	-	-	2/4/4/4	-
4	PEG	A	319	-	-	4/4/4/4	-
3	GOL	A	317	-	-	2/4/4/4	-
3	GOL	B	316	-	-	3/4/4/4	-
3	GOL	C	312	-	-	0/4/4/4	-
3	GOL	A	312	-	-	4/4/4/4	-
3	GOL	C	313	-	-	2/4/4/4	-
3	GOL	A	315	-	-	2/4/4/4	-
3	GOL	B	315	-	-	2/4/4/4	-
3	GOL	C	314	-	-	3/4/4/4	-
4	PEG	B	314	-	-	3/4/4/4	-
4	PEG	B	317[B]	-	-	1/4/4/4	-
3	GOL	B	313	-	-	4/4/4/4	-
4	PEG	B	317[A]	-	-	1/4/4/4	-
3	GOL	A	318	-	-	2/4/4/4	-

*Continued on next page...*

*Continued from previous page...*

Mol	Type	Chain	Res	Link	Chirals	Torsions	Rings
3	GOL	C	316	-	-	2/4/4/4	-

There are no bond length outliers.

There are no bond angle outliers.

There are no chirality outliers.

All (40) torsion outliers are listed below:

Mol	Chain	Res	Type	Atoms
3	A	315	GOL	O1-C1-C2-C3
3	A	318	GOL	O1-C1-C2-C3
3	B	315	GOL	C1-C2-C3-O3
3	B	315	GOL	O2-C2-C3-O3
3	B	316	GOL	C1-C2-C3-O3
3	C	313	GOL	O1-C1-C2-C3
3	C	314	GOL	O1-C1-C2-O2
3	C	314	GOL	O1-C1-C2-C3
3	C	315	GOL	C1-C2-C3-O3
3	C	316	GOL	O1-C1-C2-O2
3	C	316	GOL	O1-C1-C2-C3
4	B	314	PEG	O1-C1-C2-O2
3	A	312	GOL	O1-C1-C2-C3
3	A	312	GOL	C1-C2-C3-O3
3	A	317	GOL	O1-C1-C2-C3
3	B	313	GOL	O1-C1-C2-C3
3	B	313	GOL	C1-C2-C3-O3
3	A	312	GOL	O1-C1-C2-O2
3	A	315	GOL	O1-C1-C2-O2
3	A	318	GOL	O1-C1-C2-O2
4	A	314	PEG	O1-C1-C2-O2
4	A	314	PEG	O2-C3-C4-O4
4	B	317[A]	PEG	O1-C1-C2-O2
4	A	319	PEG	O1-C1-C2-O2
4	A	319	PEG	O2-C3-C4-O4
3	B	313	GOL	O1-C1-C2-O2
3	B	316	GOL	O2-C2-C3-O3
3	C	313	GOL	O1-C1-C2-O2
3	C	315	GOL	O2-C2-C3-O3
4	B	314	PEG	O2-C3-C4-O4
3	B	316	GOL	O1-C1-C2-O2
3	C	314	GOL	O2-C2-C3-O3
3	A	317	GOL	O1-C1-C2-O2

*Continued on next page...*

*Continued from previous page...*

Mol	Chain	Res	Type	Atoms
4	B	317[B]	PEG	O2-C3-C4-O4
4	A	319	PEG	C1-C2-O2-C3
3	A	312	GOL	O2-C2-C3-O3
4	A	319	PEG	C4-C3-O2-C2
3	B	313	GOL	O2-C2-C3-O3
4	B	314	PEG	C4-C3-O2-C2
4	A	314	PEG	C4-C3-O2-C2

There are no ring outliers.

15 monomers are involved in 37 short contacts:

Mol	Chain	Res	Type	Clashes	Symm-Clashes
3	C	313	GOL	1	0
4	B	317[B]	PEG	2	0
4	B	314	PEG	4	0
2	C	311	SO4	1	0
4	A	314	PEG	1	0
3	B	315	GOL	1	0
3	B	313	GOL	1	0
5	A	316	ACY	2	0
3	C	314	GOL	1	0
4	A	319	PEG	5	0
3	B	316	GOL	1	0
4	B	317[A]	PEG	3	0
3	A	317	GOL	4	0
3	A	312	GOL	1	0
3	A	315	GOL	10	0

## 5.7 Other polymers [i](#)

There are no such residues in this entry.

## 5.8 Polymer linkage issues [i](#)

There are no chain breaks in this entry.

## 6 Fit of model and data

### 6.1 Protein, DNA and RNA chains

In the following table, the column labelled ‘#RSRZ > 2’ contains the number (and percentage) of RSRZ outliers, followed by percent RSRZ outliers for the chain as percentile scores relative to all X-ray entries and entries of similar resolution. The OWAB column contains the minimum, median, 95<sup>th</sup> percentile and maximum values of the occupancy-weighted average B-factor per residue. The column labelled ‘Q < 0.9’ lists the number of (and percentage) of residues with an average occupancy less than 0.9.

Mol	Chain	Analysed	<RSRZ>	#RSRZ>2	OWAB(Å <sup>2</sup> )	Q<0.9
1	A	289/308 (93%)	-0.06	9 (3%) 49 51	26, 45, 81, 110	0
1	B	297/308 (96%)	0.74	39 (13%) 3 2	29, 60, 111, 141	0
1	C	253/308 (82%)	0.23	15 (5%) 22 22	31, 60, 94, 129	0
All	All	839/924 (90%)	0.31	63 (7%) 14 13	26, 54, 102, 141	0

All (63) RSRZ outliers are listed below:

Mol	Chain	Res	Type	RSRZ
1	B	159	LYS	4.5
1	C	2	ILE	4.3
1	A	246	THR	4.2
1	B	44	ALA	4.1
1	B	3	ILE	4.1
1	C	252	ALA	4.1
1	A	247	PHE	4.0
1	B	49	LEU	4.0
1	B	150	ILE	3.9
1	B	2	ILE	3.8
1	B	124	VAL	3.8
1	C	260	ASP	3.8
1	C	262	ASN	3.8
1	B	51	ILE	3.7
1	B	22	VAL	3.7
1	C	278	ILE	3.6
1	A	3	ILE	3.6
1	B	50	PRO	3.5
1	B	43	ALA	3.4
1	B	151	ILE	3.4
1	B	149	VAL	3.4
1	B	40	ALA	3.4
1	B	127	PHE	3.3

*Continued on next page...*

*Continued from previous page...*

Mol	Chain	Res	Type	RSRZ
1	B	123	ILE	3.2
1	C	3	ILE	3.2
1	B	36	LEU	3.2
1	B	152	VAL	3.1
1	B	153	PRO	3.1
1	A	48	LEU	2.9
1	A	204	GLY	2.8
1	B	125	ALA	2.7
1	A	243	LYS	2.7
1	B	23	LEU	2.7
1	C	261	PHE	2.6
1	A	25[A]	TYR	2.6
1	C	207	THR	2.6
1	B	48	LEU	2.5
1	B	137	THR	2.5
1	C	49	LEU	2.5
1	B	181	LYS	2.4
1	C	46	LYS	2.4
1	C	223	VAL	2.3
1	B	108	GLN	2.3
1	B	20	VAL	2.3
1	B	142	LYS	2.3
1	C	258	ILE	2.3
1	B	45	ARG	2.3
1	B	35	GLU	2.3
1	B	25	TYR	2.3
1	B	111	PHE	2.3
1	B	140	ASP	2.2
1	C	221	ASP	2.2
1	A	262	ASN	2.1
1	B	138	ALA	2.1
1	B	139	GLU	2.1
1	B	143	ASN	2.1
1	B	24	GLY	2.1
1	C	47	ASP	2.1
1	B	131	PHE	2.0
1	C	253	ARG	2.0
1	B	41	ASN	2.0
1	B	205	TYR	2.0
1	A	16	PRO	2.0

## 6.2 Non-standard residues in protein, DNA, RNA chains [i](#)

There are no non-standard protein/DNA/RNA residues in this entry.

## 6.3 Carbohydrates [i](#)

There are no monosaccharides in this entry.

## 6.4 Ligands [i](#)

In the following table, the Atoms column lists the number of modelled atoms in the group and the number defined in the chemical component dictionary. The B-factors column lists the minimum, median, 95<sup>th</sup> percentile and maximum values of B factors of atoms in the group. The column labelled 'Q< 0.9' lists the number of atoms with occupancy less than 0.9.

Mol	Type	Chain	Res	Atoms	RSCC	RSR	B-factors(Å <sup>2</sup> )	Q<0.9
3	GOL	B	316	6/6	0.66	0.22	77,81,84,85	0
4	PEG	B	317[A]	7/7	0.66	0.46	48,64,72,73	7
4	PEG	B	317[B]	7/7	0.66	0.46	71,72,74,76	7
3	GOL	A	312	6/6	0.67	0.37	70,75,86,86	0
2	SO4	B	312	5/5	0.72	0.24	142,143,144,144	0
3	GOL	C	315	6/6	0.73	0.41	75,92,95,95	0
2	SO4	B	311	5/5	0.74	0.24	95,96,99,102	0
3	GOL	C	316	6/6	0.77	0.27	76,83,87,92	0
3	GOL	C	314	6/6	0.79	0.24	70,71,74,74	0
5	ACY	A	316	4/4	0.80	0.27	74,75,79,79	0
3	GOL	A	315	6/6	0.82	0.24	61,68,110,114	0
3	GOL	A	317	6/6	0.83	0.32	69,76,80,81	0
3	GOL	B	313	6/6	0.85	0.19	80,86,91,94	0
3	GOL	C	313	6/6	0.85	0.23	61,66,69,69	0
4	PEG	A	319	7/7	0.90	0.30	43,46,53,57	0
3	GOL	B	315	6/6	0.91	0.25	76,80,81,85	0
4	PEG	B	314	7/7	0.92	0.17	42,50,57,58	0
6	CL	B	306	1/1	0.92	0.31	85,85,85,85	0
3	GOL	A	318	6/6	0.93	0.27	76,79,87,93	0
2	SO4	C	311	5/5	0.95	0.19	72,74,80,88	0
2	SO4	A	311	5/5	0.96	0.13	60,62,70,71	0
3	GOL	C	312	6/6	0.96	0.19	42,48,49,53	0
4	PEG	A	314	7/7	0.96	0.15	42,48,55,61	0

## 6.5 Other polymers [i](#)

There are no such residues in this entry.